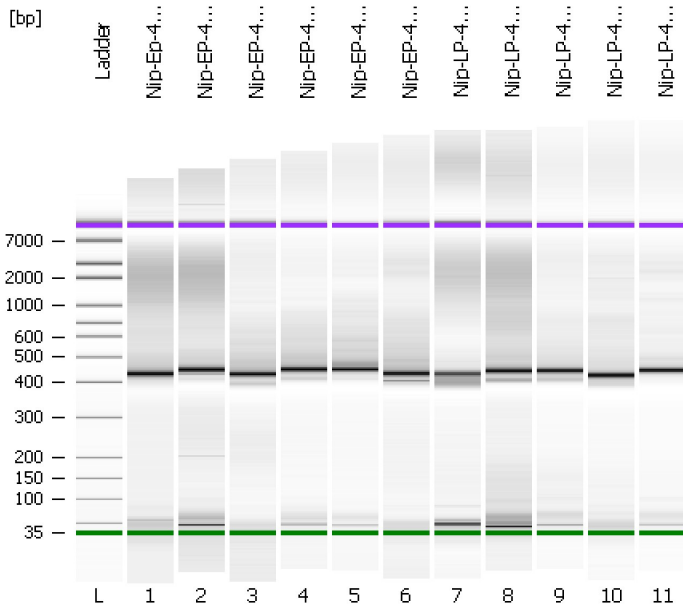


Assay Class: High Sensitivity DNA Assay
Data Path: C:\...ents and Settings\Bioanalyzer\2012-08-07\2012-08-07_004.xad

Created: 8/7/2012 1:11:31 PM
Modified: 8/7/2012 1:54:01 PM

Electrophoresis File Run Summary



Instrument Information:

Instrument Name: DE13701086 Firmware: C.01.069
Serial#: DE13701086 Type: G2938B

Assay Information:

Assay Origin Path: C:\Program Files\Agilent\2100 bioanalyzer\2100 expert\assays\dsDNA\High Sensitivity DNA.xsy
Assay Class: High Sensitivity DNA Assay
Version: 1.03
Assay Comments: Copyright © 2003-2010 Agilent Technologies

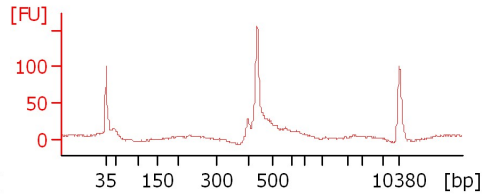
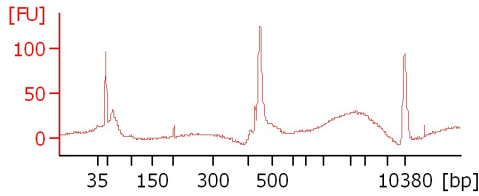
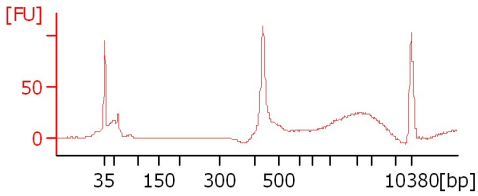
Chip Information:

Chip Lot #:
Reagent Kit Lot #:
Chip Comments:

Nip-EP-4-1mm-1

Nip-EP-4-1mm-2

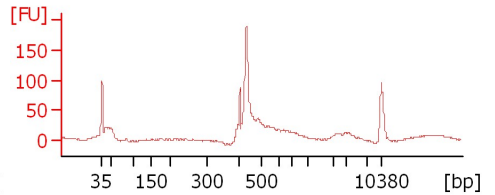
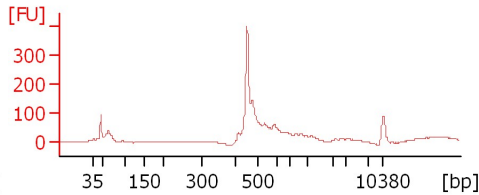
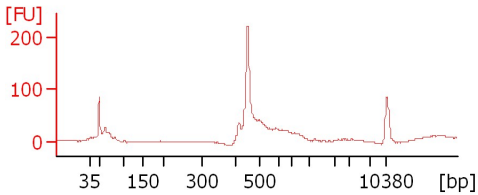
Nip-EP-4-BF-1



Nip-EP-4-BF-2

Nip-EP-4-Endo-1

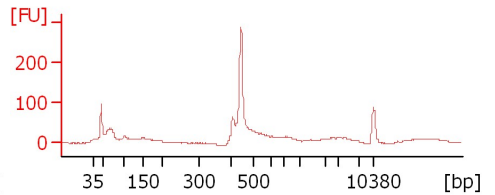
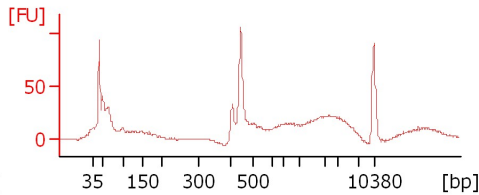
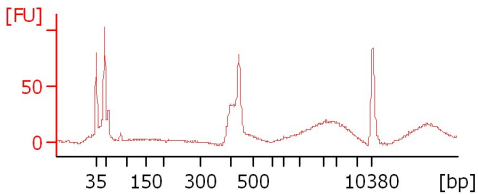
Nip-EP-4-Endo-2



Nip-LP-4-1mm-1

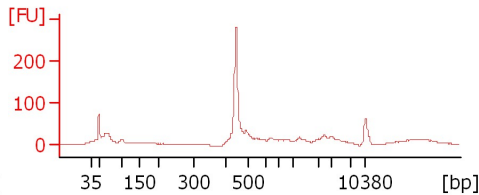
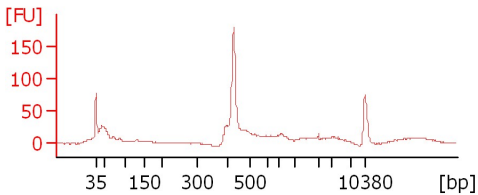
Nip-LP-4-1mm-2

Nip-LP-4-BF-1



Nip-LP-4-BF-2

Nip-LP-4-Endo-1



Assay Class: High Sensitivity DNA Assay
 Data Path: C:\...ents and Settings\Bioanalyzer\2012-08-07\2012-08-07_004.xad

Created: 8/7/2012 1:11:31 PM
 Modified: 8/7/2012 1:54:01 PM

Electrophoresis File Run Summary (Chip Summary)

Sample Name	Sample Comment	Rest. Digest	Status	Observation	Result Label	Result Color
Nip-Ep-4-1mm-1		<input type="checkbox"/>	✓			
Nip-EP-4-1mm-2		<input type="checkbox"/>	✓			
Nip-EP-4-BF-1		<input type="checkbox"/>	✓			
Nip-EP-4-BF-2		<input type="checkbox"/>	✓			
Nip-EP-4-Endo-1		<input type="checkbox"/>	✓			
Nip-EP-4-Endo-2		<input type="checkbox"/>	✓			
Nip-LP-4-1mm-1		<input type="checkbox"/>	✓			
Nip-LP-4-1mm-2		<input type="checkbox"/>	✓			
Nip-LP-4-BF-1		<input type="checkbox"/>	✓			
Nip-LP-4-BF-2		<input type="checkbox"/>	✓			
Nip-LP-4-Endo-1		<input type="checkbox"/>	✓			
Ladder		<input type="checkbox"/>	✓			

Chip Lot #

Reagent Kit Lot #

Chip Comments :

Assay Class: High Sensitivity DNA Assay
Data Path: C:\...ents and Settings\Bioanalyzer\2012-08-07\2012-08-07_004.xad

Created: 8/7/2012 1:11:31 PM
Modified: 8/7/2012 1:54:01 PM

Electrophoresis Assay Details

General Analysis Settings

Number of Available Sample and Ladder Wells (Max.) : 12
Minimum Visible Range [s] : 32
Maximum Visible Range [s] : 138
Start Analysis Time Range [s] : 33
End Analysis Time Range [s] : 137.5
Ladder Concentration [pg/ μ l] : 1950
Uses Standard Area for Ladder Fragments
Lower Marker Concentration [pg/ μ l] : 125
Upper Marker Concentration [pg/ μ l] : 75
Used Upper Marker for Quantitation
Standard Curve Fit is Point to Point
Show Data Aligned to Lower and Upper Marker

Integrator Settings

Integration Start Time [s] : 33.05
Integration End Time [s] : 137
Slope Threshold : 0.8
Height Threshold [FU] : 5
Area Threshold : 0.1
Width Threshold [s] : 0.6
Baseline Plateau [s] : 0.5

Filter Settings

Filter Width [s] : 0.5
Polynomial Order : 4

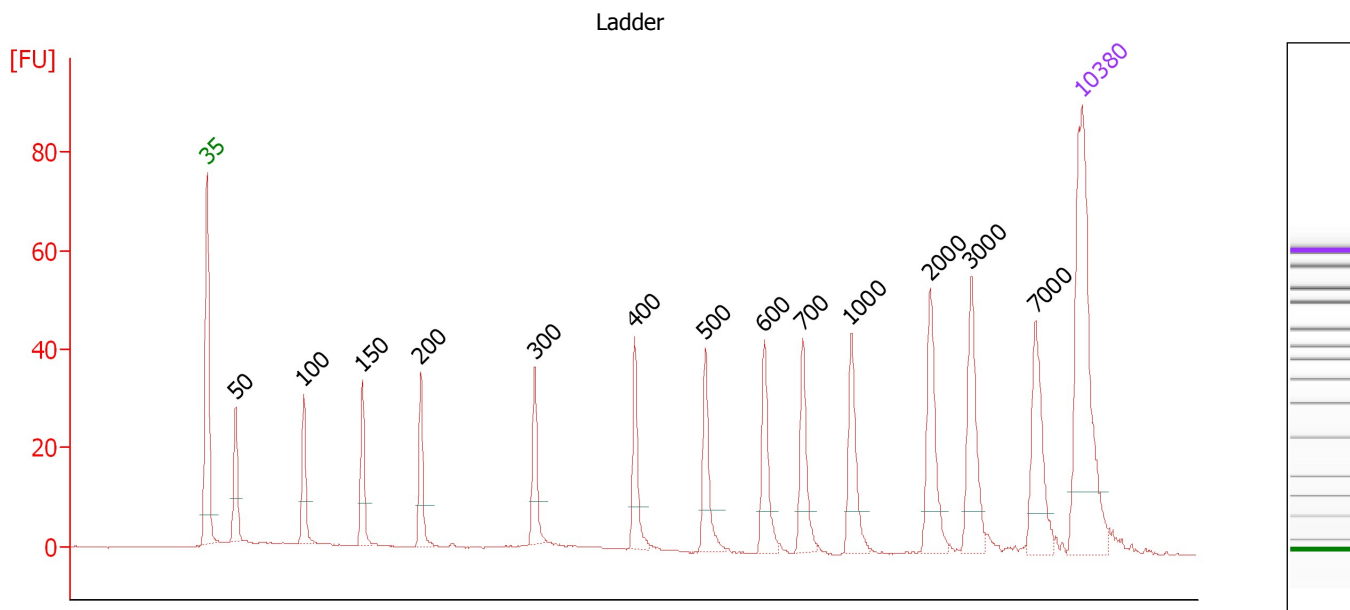
Ladder

Ladder Peak	Size	Area
1	35	160
2	50	210
3	100	208
4	150	221
5	200	242
6	300	270
7	400	305
8	500	306
9	600	336
10	700	321
11	1000	366
12	2000	413
13	3000	411
14	7000	400
15	10380	214

Assay Class: High Sensitivity DNA Assay
 Data Path: C:\...ents and Settings\Bioanalyzer\2012-08-07\2012-08-07_004.xad

Created: 8/7/2012 1:11:31 PM
 Modified: 8/7/2012 1:54:01 PM

Electropherogram Summary



Overall Results for Ladder

Noise: 0.2

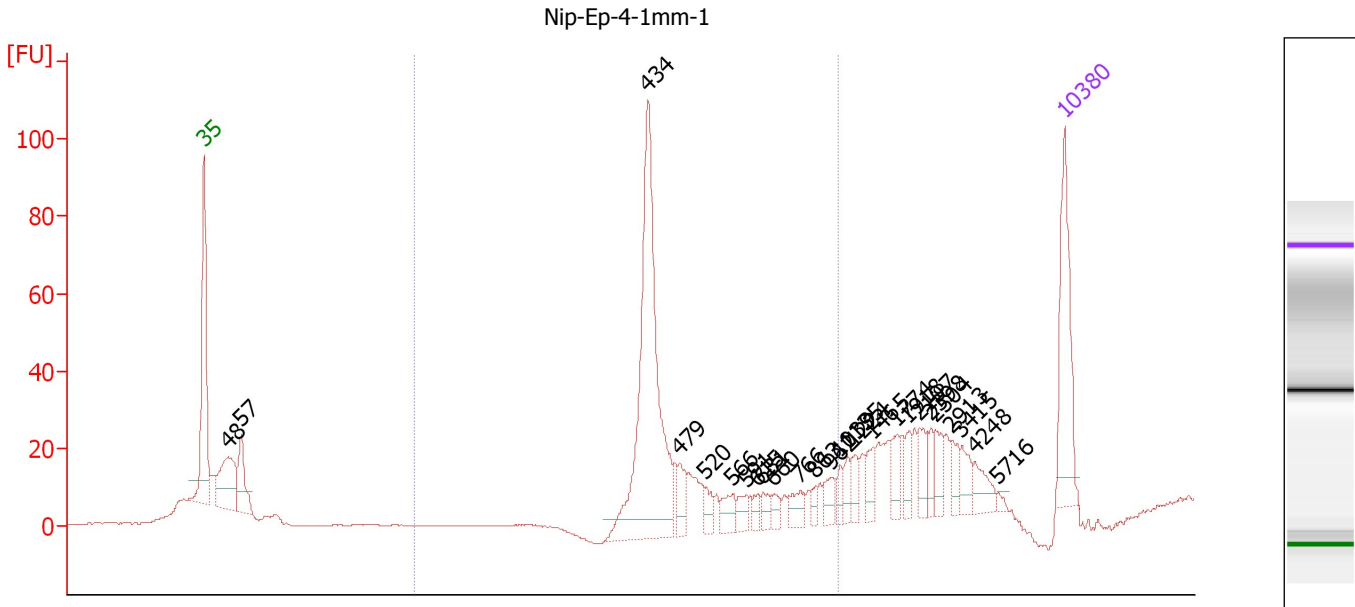
Peak table for Ladder

Peak	Size [bp]	Conc. [pg/μl]	Molarity [pmol/l]	Observations
1	35	125.00	5,411.3	Lower Marker
2	50	150.00	4,545.5	Ladder Peak
3	100	150.00	2,272.7	Ladder Peak
4	150	150.00	1,515.2	Ladder Peak
5	200	150.00	1,136.4	Ladder Peak
6	300	150.00	757.6	Ladder Peak
7	400	150.00	568.2	Ladder Peak
8	500	150.00	454.5	Ladder Peak
9	600	150.00	378.8	Ladder Peak
10	700	150.00	324.7	Ladder Peak
11	1,000	150.00	227.3	Ladder Peak
12	2,000	150.00	113.6	Ladder Peak
13	3,000	150.00	75.8	Ladder Peak
14	7,000	150.00	32.5	Ladder Peak
15	10,380	75.00	10.9	Upper Marker

Assay Class: High Sensitivity DNA Assay
Data Path: C:\...ents and Settings\Bioanalyzer\2012-08-07\2012-08-07_004.xad

Created: 8/7/2012 1:11:31 PM
Modified: 8/7/2012 1:54:01 PM

Electropherogram Summary Continued ...



Overall Results for sample 1 : Nip-Ep-4-1mm-1

Number of peaks found: 26 Corr. Area 1: 266.2
Noise: 0.2

Peak table for sample 1 : Nip-Ep-4-1mm-1

Peak	Size [bp]	Conc. [pg/μl]	Molarity [pmol/l]	Observations
1	35	125.00	5,411.3	Lower Marker
2	48	89.01	2,826.3	
3	57	54.42	1,453.8	
4	434	316.12	1,103.2	
5	479	22.05	69.7	
6	520	12.96	37.7	
7	566	17.63	47.2	
8	591	12.36	31.7	
9	615	8.24	20.3	
10	631	10.03	24.1	
11	660	9.41	21.6	
12	766	14.89	29.4	
13	863	7.73	13.6	
14	962	13.68	21.5	
15	1,039	9.19	13.4	
16	1,135	12.25	16.4	
17	1,224	12.78	15.8	
18	1,465	15.92	16.5	
19	1,774	15.55	13.3	
20	1,918	13.60	10.7	
21	2,107	17.65	12.7	
22	2,398	12.42	7.8	
23	2,504	15.61	9.4	
24	2,913	12.43	6.5	
25	3,415	15.57	6.9	
26	4,248	17.87	6.4	

Assay Class: High Sensitivity DNA Assay
Data Path: C:\...ents and Settings\Bioanalyzer\2012-08-07\2012-08-07_004.xad

Created: 8/7/2012 1:11:31 PM
Modified: 8/7/2012 1:54:01 PM

Electropherogram Summary Continued ...**... Peak table for sample 1 : Nip-Ep-4-1mm-1**

Peak	Size [bp]	Conc. [pg/ μ l]	Molarity [pmol/l]	Observations
27	5,716	2.90	0.8	
28	▶ 10,380	75.00	10.9	Upper Marker

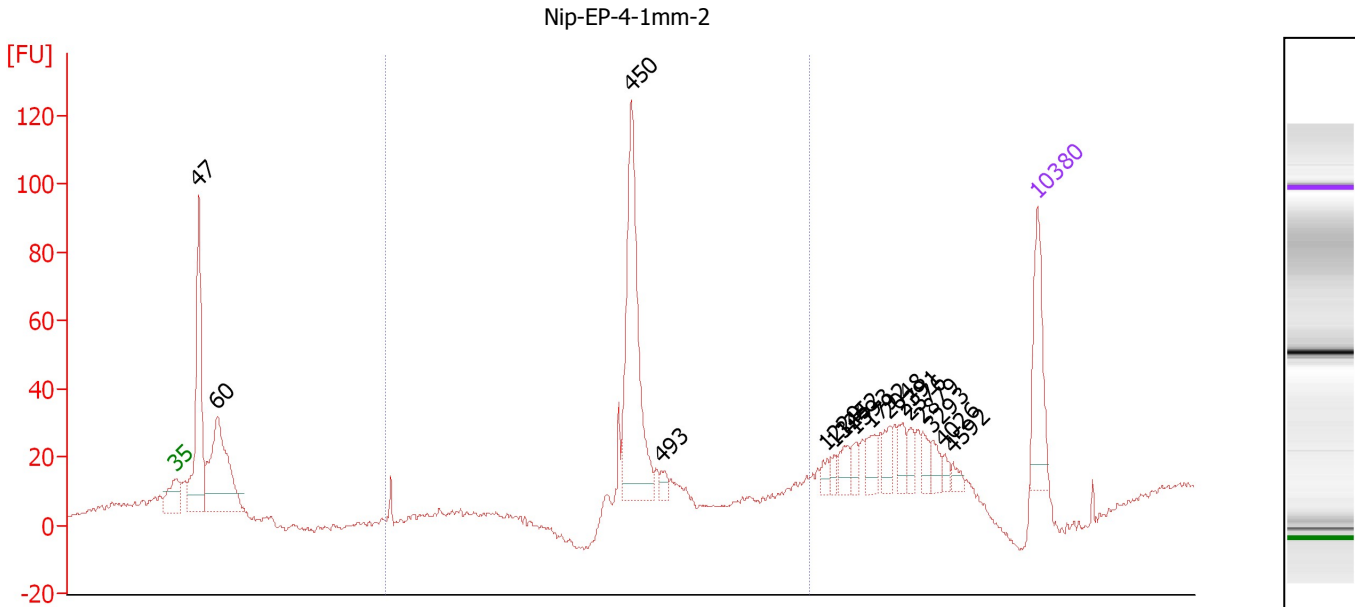
Region table for sample 1 : Nip-Ep-4-1mm-1

From [bp]	To [bp]	Average Size [bp]	Molarity [pmol/l]	Conc. [pg/ μ l]	Corr. Area	% of Total	Size distribution in CV [%]	Color
200	1,000	497	1,109.6	343.78	266.2	45	26.3	■

Assay Class: High Sensitivity DNA Assay
 Data Path: C:\...ents and Settings\Bioanalyzer\2012-08-07\2012-08-07_004.xad

Created: 8/7/2012 1:11:31 PM
 Modified: 8/7/2012 1:54:01 PM

Electropherogram Summary Continued ...



Overall Results for sample 2 : Nip-EP-4-1mm-2

Number of peaks found: 16 Corr. Area 1: 215.2
 Noise: 0.7

Peak table for sample 2 : Nip-EP-4-1mm-2

Peak	Size [bp]	Conc. [pg/μl]	Molarity [pmol/l]	Observations
1	35	125.00	5,411.3	Lower Marker
2	47	287.93	9,201.6	
3	60	258.81	6,509.5	
4	450	280.68	945.5	
5	493	12.05	37.0	
6	1,229	10.66	13.1	
7	1,325	8.96	10.2	
8	1,442	19.14	20.1	
9	1,593	12.75	12.1	
10	1,792	21.65	18.3	
11	2,048	19.05	14.1	
12	2,391	17.54	11.1	
13	2,576	15.57	9.2	
14	2,879	13.60	7.2	
15	3,293	15.71	7.2	
16	4,026	7.42	2.8	
17	4,592	8.26	2.7	
18	10,380	75.00	10.9	Upper Marker

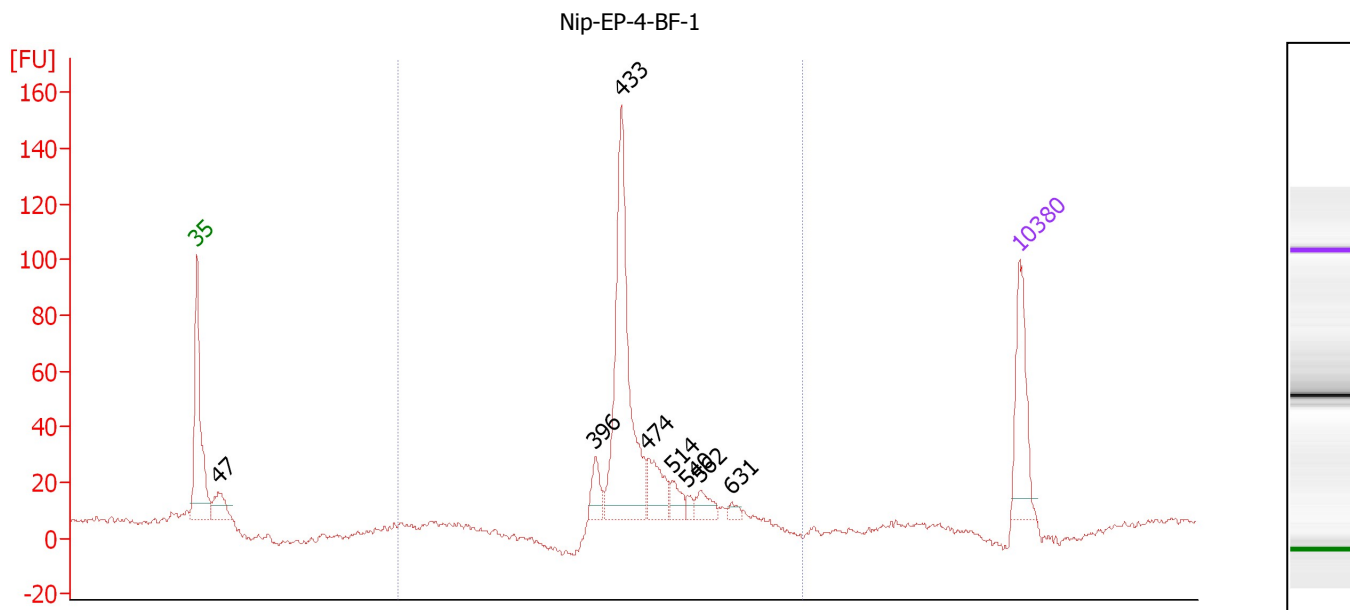
Region table for sample 2 : Nip-EP-4-1mm-2

From [bp]	To [bp]	Average Size [bp]	Molarity [pmol/l]	Conc. [pg/μl]	Corr. Area	% of Total	Size distribution in CV [%]	Color
200	1,000	473	1,124.8	338.31	215.2	31	20.7	Blue

Assay Class: High Sensitivity DNA Assay
 Data Path: C:\...ents and Settings\Bioanalyzer\2012-08-07\2012-08-07_004.xad

Created: 8/7/2012 1:11:31 PM
 Modified: 8/7/2012 1:54:01 PM

Electropherogram Summary Continued ...



Overall Results for sample 3 : Nip-EP-4-BF-1

Number of peaks found: 8 Corr. Area 1: 396.7
 Noise: 1.2

Peak table for sample 3 : Nip-EP-4-BF-1

Peak	Size [bp]	Conc. [pg/μl]	Molarity [pmol/l]	Observations
1	35	125.00	5,411.3	Lower Marker
2	47	48.40	1,566.4	
3	396	30.96	118.5	
4	433	309.26	1,081.9	
5	474	52.18	166.8	
6	514	21.89	64.5	
7	540	7.73	21.7	
8	562	21.64	58.3	
9	631	7.82	18.8	
10	10,380	75.00	10.9	Upper Marker

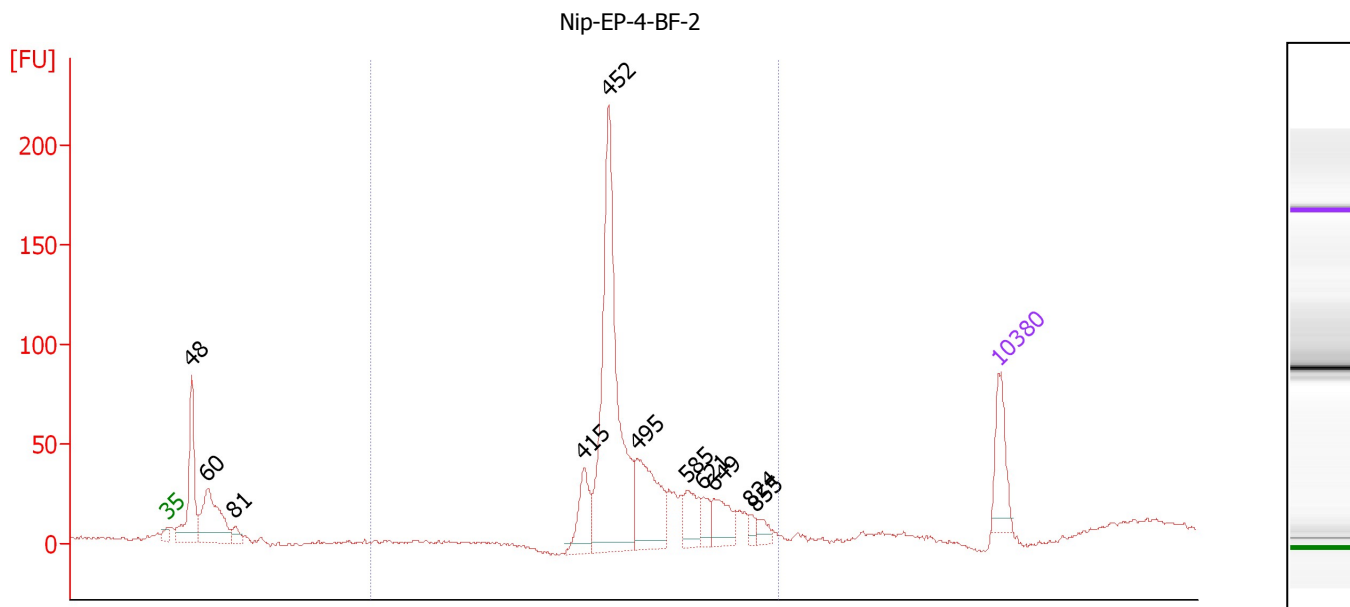
Region table for sample 3 : Nip-EP-4-BF-1

From [bp]	To [bp]	Average Size [bp]	Molarity [pmol/l]	Conc. [pg/μl]	Corr. Area	% of Total	Size distribution in CV [%]	Color
200	1,000	464	1,586.2	477.79	396.7	88	12.7	Blue

Assay Class: High Sensitivity DNA Assay
 Data Path: C:\...ents and Settings\Bioanalyzer\2012-08-07\2012-08-07_004.xad

Created: 8/7/2012 1:11:31 PM
 Modified: 8/7/2012 1:54:01 PM

Electropherogram Summary Continued ...



Overall Results for sample 4 : Nip-EP-4-BF-2

Number of peaks found: 11 Corr. Area 1: 680.7
 Noise: 0.8

Peak table for sample 4 : Nip-EP-4-BF-2

Peak	Size [bp]	Conc. [pg/μl]	Molarity [pmol/l]	Observations
1	35	125.00	5,411.3	Lower Marker
2	48	253.04	7,958.8	
3	60	240.01	6,041.7	
4	81	31.89	595.2	
5	415	96.47	352.1	
6	452	618.98	2,077.0	
7	495	189.99	581.4	
8	585	63.67	164.9	
9	621	32.41	79.1	
10	649	68.80	160.6	
11	824	13.46	24.7	
12	855	20.69	36.7	
13	10,380	75.00	10.9	Upper Marker

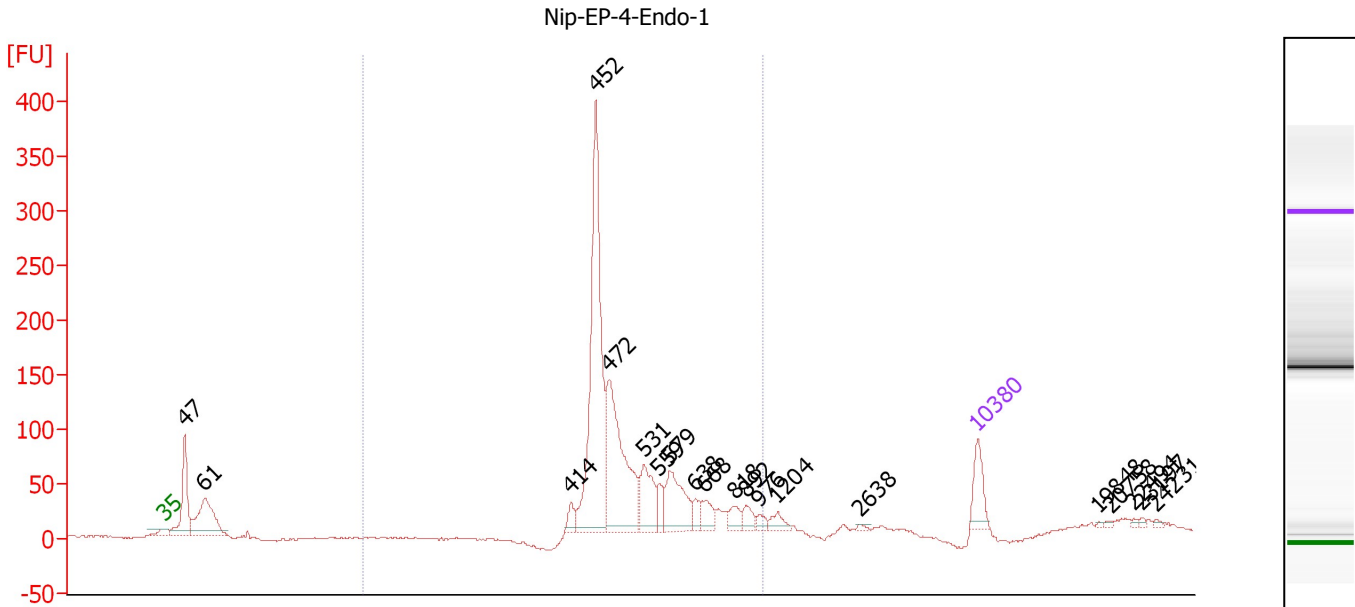
Region table for sample 4 : Nip-EP-4-BF-2

From [bp]	To [bp]	Average Size [bp]	Molarity [pmol/l]	Conc. [pg/μl]	Corr. Area	% of Total	Size distribution in CV [%]	Color
200	1,000	507	2,916.0	943.00	680.7	74	18.2	Blue

Assay Class: High Sensitivity DNA Assay
 Data Path: C:\...ents and Settings\Bioanalyzer\2012-08-07\2012-08-07_004.xad

Created: 8/7/2012 1:11:31 PM
 Modified: 8/7/2012 1:54:01 PM

Electropherogram Summary Continued ...



Overall Results for sample 5 : Nip-EP-4-Endo-1

Number of peaks found: 20 Corr. Area 1: 1,288.9
 Noise: 0.9

Peak table for sample 5 : Nip-EP-4-Endo-1

Peak	Size [bp]	Conc. [pg/μl]	Molarity [pmol/l]	Observations
1	35	125.00	5,411.3	Lower Marker
2	47	282.09	9,159.8	
3	61	300.38	7,426.3	
4	414	34.71	127.1	
5	452	800.37	2,683.2	
6	472	495.09	1,588.7	
7	531	144.59	412.6	
8	559	48.12	130.3	
9	579	171.38	448.5	
10	638	30.73	73.0	
11	668	57.19	129.7	
12	818	37.52	69.5	
13	892	34.97	59.4	
14	976	18.41	28.6	
15	1,204	29.96	37.7	
16	2,638	5.16	3.0	
17	10,380	75.00	10.9	Upper Marker
18	19,848	0.00	0.0	
19	20,758	0.00	0.0	
20	22,494	0.00	0.0	
21	23,197	0.00	0.0	
22	24,231	0.00	0.0	

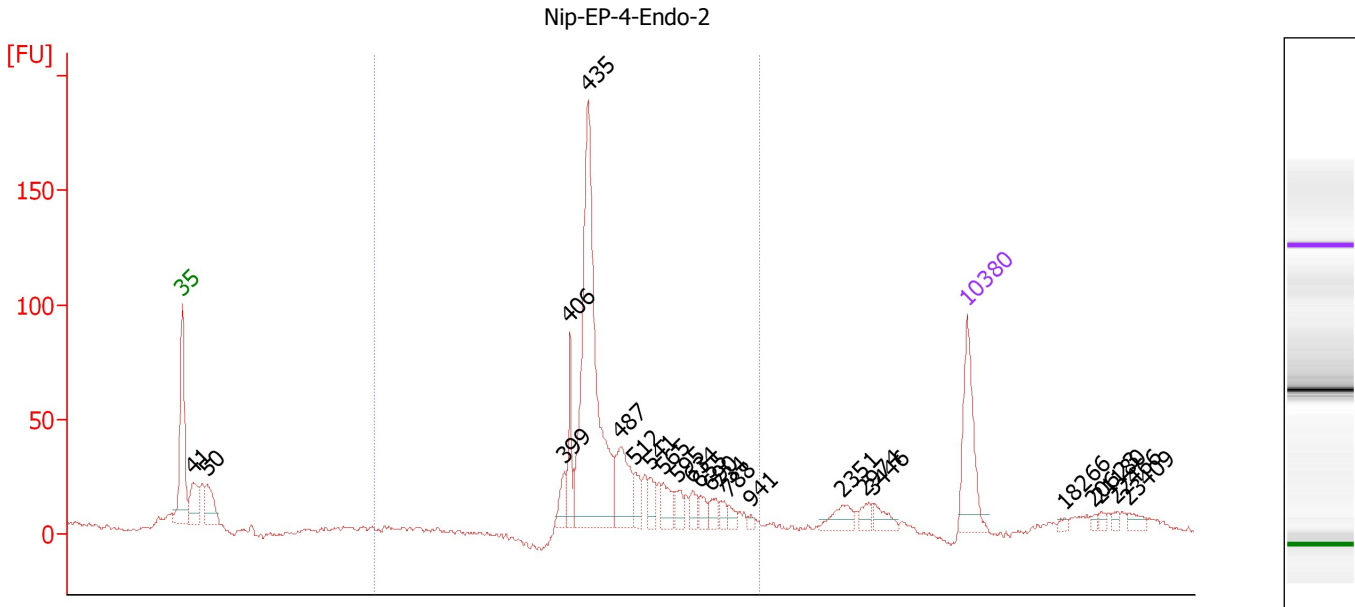
Region table for sample 5 : Nip-EP-4-Endo-1

From [bp]	To [bp]	Average Size [bp]	Molarity [pmol/l]	Conc. [pg/μl]	Corr. Area	% of Total	Size distribution in CV [%]	Color
200	1,000	525	5,776.7	1,915.82	1,288.9	78	21.4	Blue

Assay Class: High Sensitivity DNA Assay
 Data Path: C:\...ents and Settings\Bioanalyzer\2012-08-07\2012-08-07_004.xad

Created: 8/7/2012 1:11:31 PM
 Modified: 8/7/2012 1:54:01 PM

Electropherogram Summary Continued ...



Overall Results for sample 6 : Nip-EP-4-Endo-2

Number of peaks found: 24 Corr. Area 1: 628.6
 Noise: 0.6

Peak table for sample 6 : Nip-EP-4-Endo-2


Peak	Size [bp]	Conc. [pg/μl]	Molarity [pmol/l]	Observations
1	35	125.00	5,411.3	Lower Marker
2	41	68.42	2,516.3	
3	50	57.65	1,762.1	
4	399	26.78	101.8	
5	406	42.27	157.6	
6	435	416.49	1,451.1	
7	487	78.26	243.5	
8	512	25.47	75.5	
9	541	21.04	58.9	
10	565	25.21	67.6	
11	595	15.50	39.5	
12	634	14.78	35.3	
13	655	14.70	34.0	
14	690	15.58	34.2	
15	734	11.35	23.4	
16	788	9.04	17.4	
17	941	4.38	7.0	
18	2,351	20.72	13.4	
19	2,974	11.78	6.0	
20	3,446	15.63	6.9	
21	10,380	75.00	10.9	Upper Marker
22	18,266	0.00	0.0	
23	20,623	0.00	0.0	
24	21,180	0.00	0.0	
25	22,466	0.00	0.0	
26	23,409	0.00	0.0	

Assay Class: High Sensitivity DNA Assay
Data Path: C:\...ents and Settings\Bioanalyzer\2012-08-07\2012-08-07_004.xad

Created: 8/7/2012 1:11:31 PM
Modified: 8/7/2012 1:54:01 PM

Electropherogram Summary Continued ...

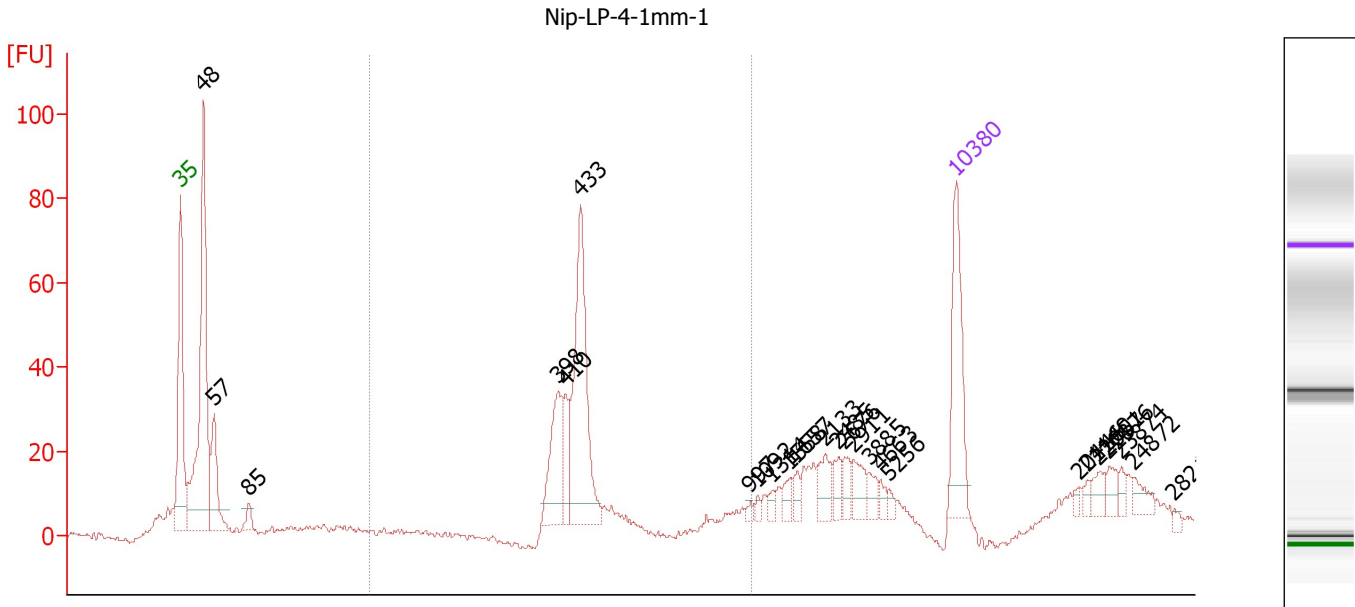
... Region table for sample 6 : Nip-EP-4-Endo-2

From [bp]	To [bp]	Average Size [bp]	Molarity [pmol/l]	Conc. [pg/ μ l]	Corr. Area	% of Total	Size distribution in CV [%]	Color
200	1,000	496	2,376.8	746.56	628.6	76	20.9	

Assay Class: High Sensitivity DNA Assay
 Data Path: C:\...ents and Settings\Bioanalyzer\2012-08-07\2012-08-07_004.xad

Created: 8/7/2012 1:11:31 PM
 Modified: 8/7/2012 1:54:01 PM

Electropherogram Summary Continued ...



Overall Results for sample 7 : Nip-LP-4-1mm-1

Number of peaks found: 25 Corr. Area 1: 220.4
 Noise: 0.8

Peak table for sample 7 : Nip-LP-4-1mm-1

Peak	Size [bp]	Conc. [pg/μl]	Molarity [pmol/l]	Observations
1	35	125.00	5,411.3	Lower Marker
2	48	355.67	11,113.0	
3	57	86.61	2,314.1	
4	85	15.22	270.1	
5	398	74.35	282.7	
6	410	36.36	134.5	
7	433	181.56	634.7	
8	997	4.15	6.3	
9	1,092	4.18	5.8	
10	1,314	5.71	6.6	
11	1,558	9.99	9.7	
12	1,657	7.90	7.2	
13	2,133	21.33	15.2	
14	2,485	11.82	7.2	
15	2,676	11.89	6.7	
16	2,911	18.30	9.5	
17	3,885	11.49	4.5	
18	4,663	6.75	2.2	
19	5,256	4.15	1.2	
20	10,380	75.00	10.9	Upper Marker
21	20,446	0.00	0.0	
22	21,140	0.00	0.0	
23	22,051	0.00	0.0	
24	22,876	0.00	0.0	
25	23,874	0.00	0.0	
26	24,872	0.00	0.0	


Assay Class: High Sensitivity DNA Assay
Data Path: C:\...ents and Settings\Bioanalyzer\2012-08-07\2012-08-07_004.xad

Created: 8/7/2012 1:11:31 PM
Modified: 8/7/2012 1:54:01 PM

Electropherogram Summary Continued ...**... Peak table for sample 7 : Nip-LP-4-1mm-1**

Peak	Size [bp]	Conc. [pg/ μ l]	Molarity [pmol/l]	Observations
27	28,212	0.00	0.0	

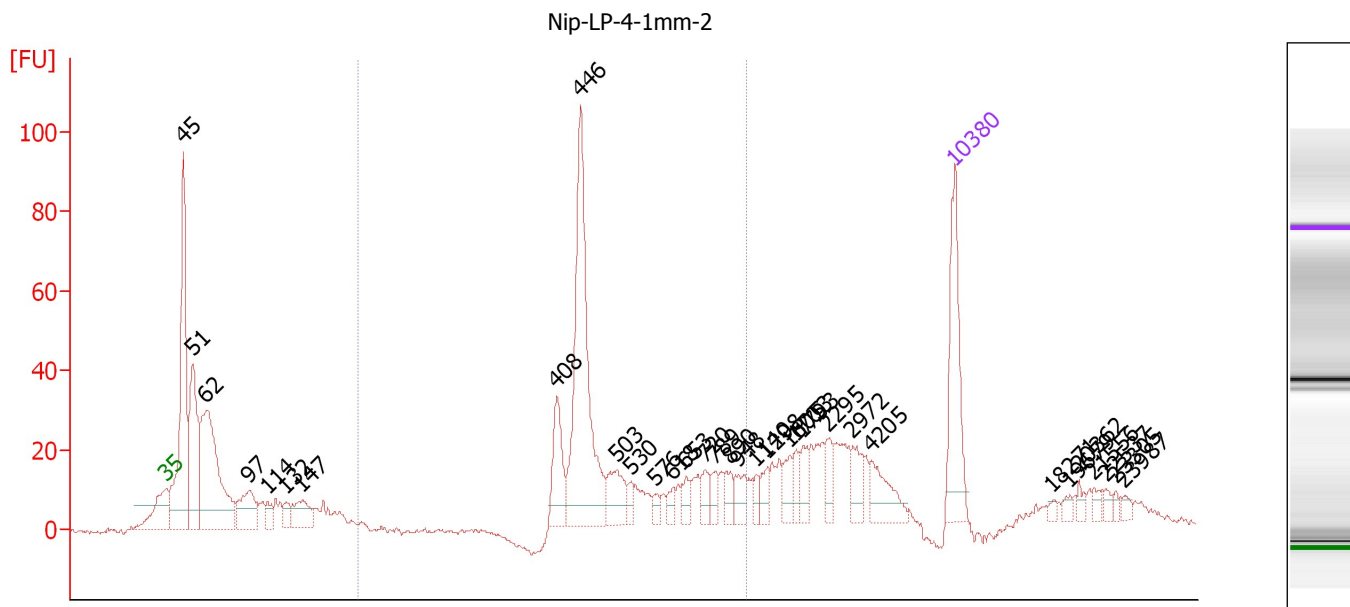
Region table for sample 7 : Nip-LP-4-1mm-1

From [bp]	To [bp]	Average Size [bp]	Molarity [pmol/l]	Conc. [pg/ μ l]	Corr. Area	% of Total	Size distribution in CV [%]	Color
200	1,000	448	1,130.2	322.12	220.4	33	23.6	

Assay Class: High Sensitivity DNA Assay
 Data Path: C:\...ents and Settings\Bioanalyzer\2012-08-07\2012-08-07_004.xad

Created: 8/7/2012 1:11:31 PM
 Modified: 8/7/2012 1:54:01 PM

Electropherogram Summary Continued ...



Overall Results for sample 8 : Nip-LP-4-1mm-2

Number of peaks found: 33 Corr. Area 1: 391.4
 Noise: 0.5

Peak table for sample 8 : Nip-LP-4-1mm-2


Peak	Size [bp]	Conc. [pg/μl]	Molarity [pmol/l]	Observations
1	35	125.00	5,411.3	Lower Marker
2	45	288.34	9,669.6	
3	51	157.71	4,682.4	
4	62	258.94	6,340.5	
5	97	64.59	1,013.3	
6	114	14.94	198.2	
7	132	15.55	178.7	
8	147	41.95	432.4	
9	408	55.86	207.2	
10	446	244.11	829.2	
11	503	39.80	119.8	
12	530	10.32	29.5	
13	576	7.35	19.3	
14	618	9.86	24.2	
15	653	12.82	29.8	
16	720	15.02	31.6	
17	789	12.54	24.1	
18	890	14.25	24.2	
19	948	16.53	26.4	
20	1,140	8.67	11.5	
21	1,298	13.00	15.2	
22	1,605	15.82	14.9	
23	1,703	11.87	10.6	
24	1,793	15.17	12.8	
25	2,295	14.88	9.8	
26	2,972	19.55	10.0	

Assay Class: High Sensitivity DNA Assay
 Data Path: C:\...ents and Settings\Bioanalyzer\2012-08-07\2012-08-07_004.xad


Created: 8/7/2012 1:11:31 PM
 Modified: 8/7/2012 1:54:01 PM

Electropherogram Summary Continued ...

... Peak table for sample 8 : Nip-LP-4-1mm-2

Peak	Size [bp]	Conc. [pg/ μ l]	Molarity [pmol/l]	Observations
27	4,205	31.52	11.4	
28	 10,380	75.00	10.9	Upper Marker
29	18,271	0.00	0.0	
30	19,679	0.00	0.0	
31	20,362	0.00	0.0	
32	21,556	0.00	0.0	
33	22,537	0.00	0.0	
34	23,305	0.00	0.0	
35	23,987	0.00	0.0	

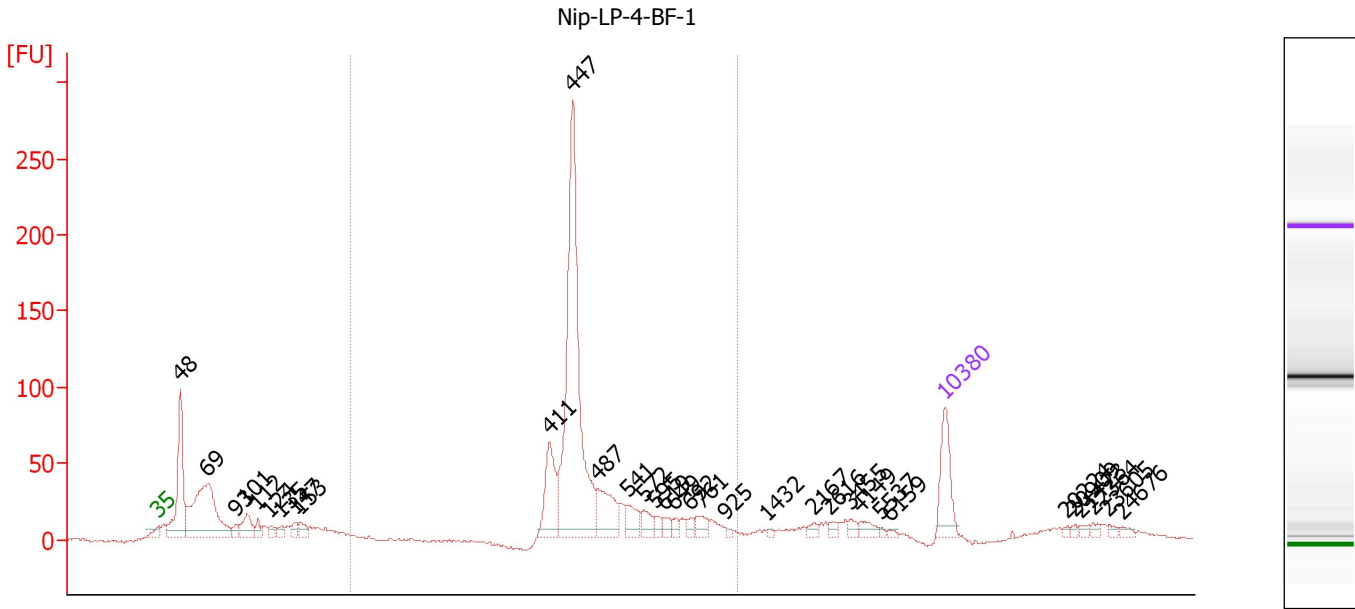
Region table for sample 8 : Nip-LP-4-1mm-2

From [bp]	To [bp]	Average Size [bp]	Molarity [pmol/l]	Conc. [pg/ μ l]	Corr. Area	% of Total	Size distribution in CV [%]	Color
200	1,000	545	1,547.3	510.42	391.4	33	28.3	

Assay Class: High Sensitivity DNA Assay
 Data Path: C:\...ents and Settings\Bioanalyzer\2012-08-07\2012-08-07_004.xad

Created: 8/7/2012 1:11:31 PM
 Modified: 8/7/2012 1:54:01 PM

Electropherogram Summary Continued ...



Overall Results for sample 9 : Nip-LP-4-BF-1

Number of peaks found: 33 Corr. Area 1: 820.9
 Noise: 1.1

Peak table for sample 9 : Nip-LP-4-BF-1

Peak	Size [bp]	Conc. [pg/μl]	Molarity [pmol/l]	Observations
1	35	125.00	5,411.3	Lower Marker
2	48	275.38	8,748.7	
3	69	396.18	8,705.6	
4	93	22.47	366.5	
5	101	66.57	1,000.1	
6	112	22.09	298.8	
7	124	18.00	219.7	
8	135	18.36	206.4	
9	147	21.72	223.2	
10	153	26.27	261.0	
11	411	120.46	444.6	
12	447	636.12	2,154.2	
13	487	94.90	295.4	
14	541	41.44	116.1	
15	572	27.83	73.7	
16	595	13.23	33.7	
17	619	16.72	40.9	
18	649	11.21	26.2	
19	692	12.47	27.3	
20	761	23.23	46.2	
21	925	4.69	7.7	
22	1,432	3.67	3.9	
23	2,167	9.37	6.6	
24	2,616	8.96	5.2	
25	3,455	9.83	4.3	
26	4,149	16.02	5.8	

Assay Class: High Sensitivity DNA Assay
 Data Path: C:\...ents and Settings\Bioanalyzer\2012-08-07\2012-08-07_004.xad


Created: 8/7/2012 1:11:31 PM
 Modified: 8/7/2012 1:54:01 PM

Electropherogram Summary Continued ...

... Peak table for sample 9 : Nip-LP-4-BF-1

Peak	Size [bp]	Conc. [pg/ μ l]	Molarity [pmol/l]	Observations
27	5,537	3.29	0.9	
28	6,159	4.25	1.0	
29	10,380	75.00	10.9	Upper Marker
30	20,224	0.00	0.0	
31	20,909	0.00	0.0	
32	21,423	0.00	0.0	
33	22,364	0.00	0.0	
34	23,605	0.00	0.0	
35	24,676	0.00	0.0	

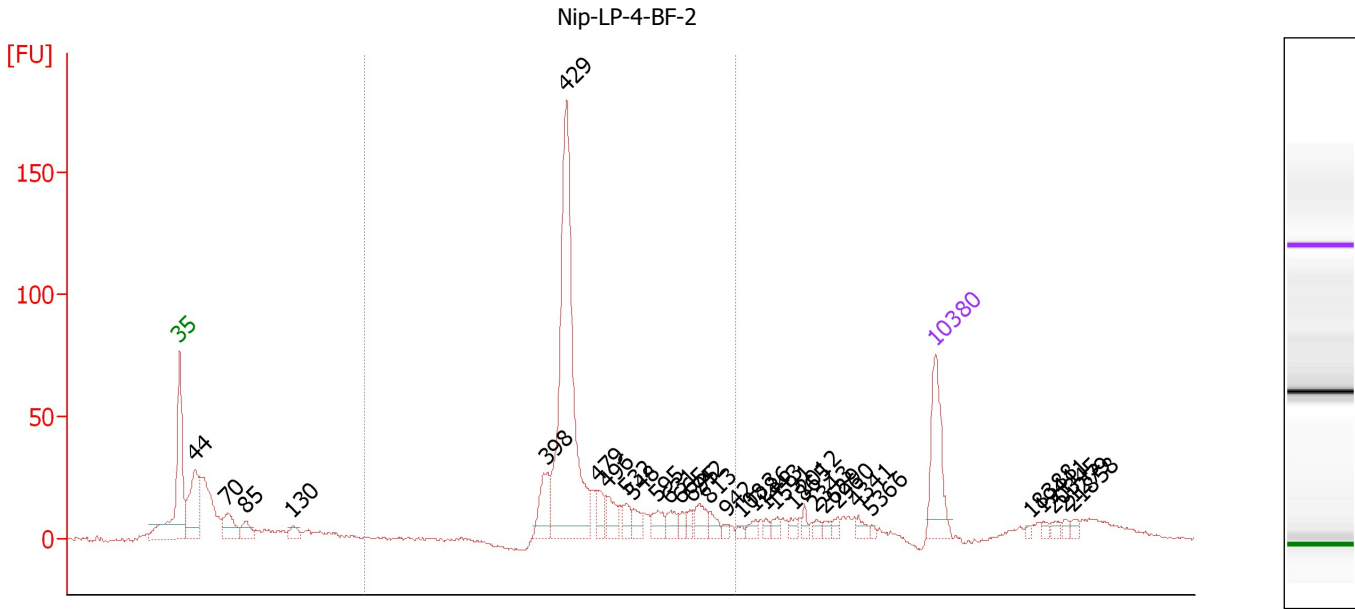
Region table for sample 9 : Nip-LP-4-BF-1

From [bp]	To [bp]	Average Size [bp]	Molarity [pmol/l]	Conc. [pg/ μ l]	Corr. Area	% of Total	Size distribution in CV [%]	Color
200	1,000	497	3,485.0	1,090.06	820.9	53	21.6	

Assay Class: High Sensitivity DNA Assay
 Data Path: C:\...ents and Settings\Bioanalyzer\2012-08-07\2012-08-07_004.xad

Created: 8/7/2012 1:11:31 PM
 Modified: 8/7/2012 1:54:01 PM

Electropherogram Summary Continued ...



Overall Results for sample 10 : Nip-LP-4-BF-2

Number of peaks found: 33 Corr. Area 1: 539.5
 Noise: 0.7

Peak table for sample 10 : Nip-LP-4-BF-2

Peak	Size [bp]	Conc. [pg/μl]	Molarity [pmol/l]	Observations
1	35	125.00	5,411.3	Lower Marker
2	44	143.38	4,900.5	
3	70	59.22	1,288.7	
4	85	31.40	556.7	
5	130	19.72	229.9	
6	398	55.20	210.1	
7	429	457.79	1,617.9	
8	479	24.50	77.5	
9	496	31.29	95.6	
10	532	20.84	59.4	
11	548	18.95	52.4	
12	595	21.09	53.7	
13	631	18.28	43.9	
14	665	10.26	23.4	
15	695	10.95	23.9	
16	742	25.85	52.8	
17	813	14.39	26.8	
18	942	5.66	9.1	
19	1,083	5.35	7.5	
20	1,286	8.82	10.4	
21	1,443	5.75	6.0	
22	1,591	8.57	8.2	
23	1,865	7.55	6.1	
24	2,012	7.00	5.3	
25	2,343	6.99	4.5	
26	2,629	5.75	3.3	

Assay Class: High Sensitivity DNA Assay
 Data Path: C:\...ents and Settings\Bioanalyzer\2012-08-07\2012-08-07_004.xad

Created: 8/7/2012 1:11:31 PM
 Modified: 8/7/2012 1:54:01 PM

Electropherogram Summary Continued ...

... Peak table for sample 10 : Nip-LP-4-BF-2

Peak	Size [bp]	Conc. [pg/μl]	Molarity [pmol/l]	Observations
27	2,960	6.79	3.5	
28	4,341	9.21	3.2	
29	5,366	3.06	0.9	
30	10,380	75.00	10.9	Upper Marker
31	18,388	0.00	0.0	
32	19,411	0.00	0.0	
33	20,345	0.00	0.0	
34	21,279	0.00	0.0	
35	21,858	0.00	0.0	

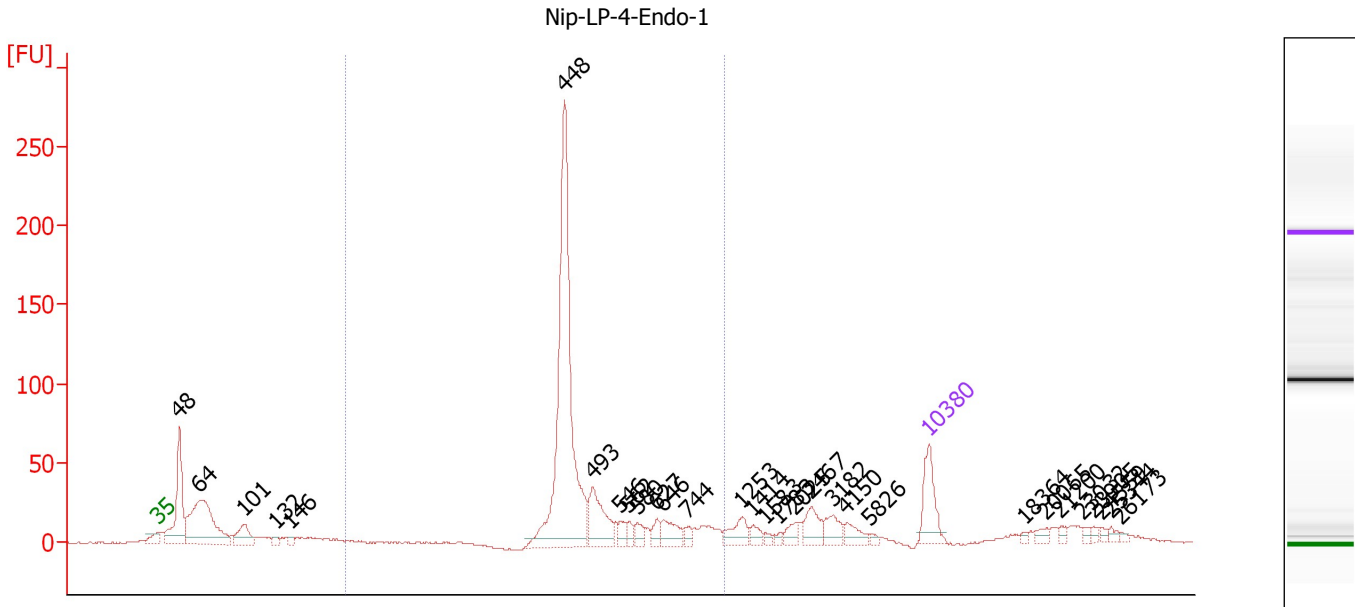
Region table for sample 10 : Nip-LP-4-BF-2

From [bp]	To [bp]	Average Size [bp]	Molarity [pmol/l]	Conc. [pg/μl]	Corr. Area	% of Total	Size distribution in CV [%]	Color
200	1,000	493	2,462.0	758.36	539.5	58	24.2	

Assay Class: High Sensitivity DNA Assay
 Data Path: C:\...ents and Settings\Bioanalyzer\2012-08-07\2012-08-07_004.xad

Created: 8/7/2012 1:11:31 PM
 Modified: 8/7/2012 1:54:01 PM

Electropherogram Summary Continued ...



Overall Results for sample 11 : Nip-LP-4-Endo-1

Number of peaks found: 30 Corr. Area 1: 656.6
 Noise: 0.5

Peak table for sample 11 : Nip-LP-4-Endo-1

Peak	Size [bp]	Conc. [pg/μl]	Molarity [pmol/l]	Observations
1	35	125.00	5,411.3	Lower Marker
2	48	273.02	8,629.4	
3	64	386.00	9,081.2	
4	101	79.48	1,187.3	
5	132	15.59	178.4	
6	146	14.82	153.5	
7	448	763.52	2,581.8	
8	493	121.28	372.5	
9	546	22.81	63.3	
10	562	18.36	49.5	
11	580	23.68	61.9	
12	627	22.32	53.9	
13	646	49.42	115.9	
14	744	15.67	31.9	
15	1,253	43.63	52.8	
16	1,414	18.61	19.9	
17	1,583	7.62	7.3	
18	1,783	7.27	6.2	
19	2,025	21.04	15.7	
20	2,467	44.39	27.3	
21	3,182	34.64	16.5	
22	4,150	26.55	9.7	
23	5,826	6.59	1.7	
24	10,380	75.00	10.9	Upper Marker
25	18,364	0.00	0.0	
26	20,065	0.00	0.0	

Assay Class: High Sensitivity DNA Assay
 Data Path: C:\...ents and Settings\Bioanalyzer\2012-08-07\2012-08-07_004.xad


Created: 8/7/2012 1:11:31 PM
 Modified: 8/7/2012 1:54:01 PM

Electropherogram Summary Continued ...

... Peak table for sample 11 : Nip-LP-4-Endo-1

Peak	Size [bp]	Conc. [pg/ μ l]	Molarity [pmol/l]	Observations
27	21,200	0.00	0.0	
28	23,032	0.00	0.0	
29	23,905	0.00	0.0	
30	24,559	0.00	0.0	
31	25,344	0.00	0.0	
32	26,173	0.00	0.0	

Region table for sample 11 : Nip-LP-4-Endo-1

From [bp]	To [bp]	Average Size [bp]	Molarity [pmol/l]	Conc. [pg/ μ l]	Corr. Area	% of Total	Size distribution in CV [%]	Color
200	1,000	504	3,295.1	1,039.90	656.6	52	22.7	

Assay Class: High Sensitivity DNA Assay
Data Path: C:\...ents and Settings\Bioanalyzer\2012-08-07\2012-08-07_004.xad

Created: 8/7/2012 1:11:31 PM
Modified: 8/7/2012 1:54:01 PM

Gel Image

