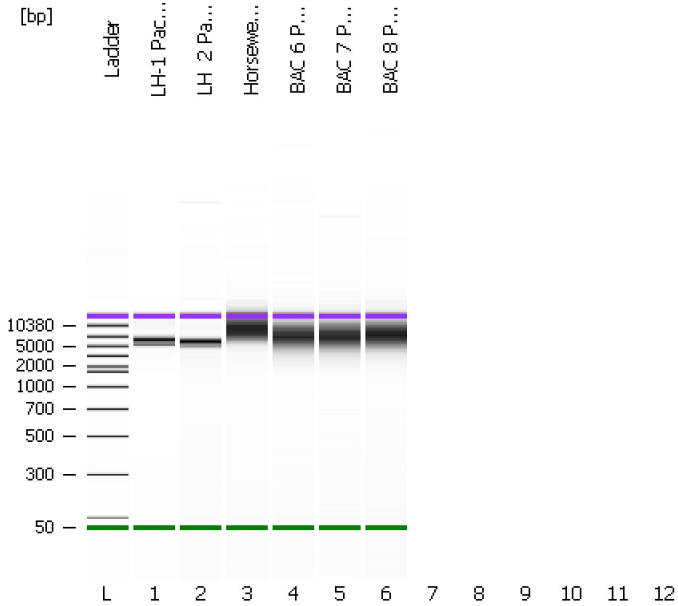


Assay Class: DNA 12000
Data Path: C:\...ents and Settings\Bioanalyzer\2012-08-07\2012-08-07_005.xad

Created: 8/7/2012 2:14:58 PM
Modified: 8/7/2012 2:37:16 PM

Electrophoresis File Run Summary



Instrument Information:

Instrument Name: DE13701086 Firmware: C.01.069
Serial#: DE13701086 Type: G2938B

Assay Information:

Assay Origin Path: C:\Program Files\Agilent\2100 bioanalyzer\2100 expert\assays\dsDNA\DNA 12000 Series II.xsy

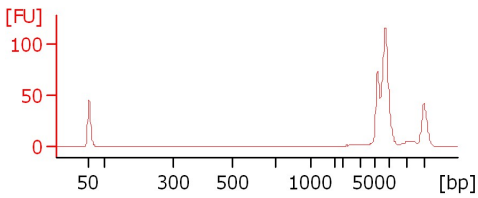
Assay Class: DNA 12000
Version: 2.4
Assay Comments: DNA Analysis 100 -12000 bp

© Copyright 2003-2009 Agilent Technologies, Inc.

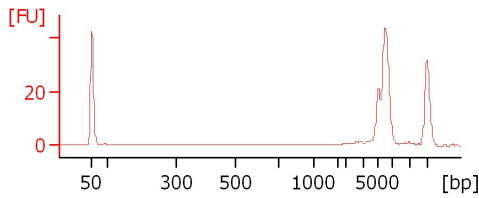
Chip Information:

Chip Lot #:
Reagent Kit Lot #:
Chip Comments:

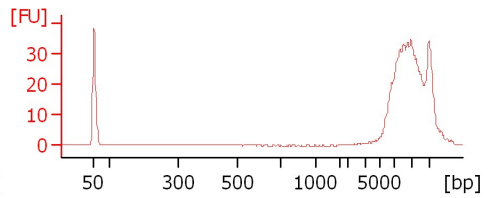
LH-1 PacBio Lib



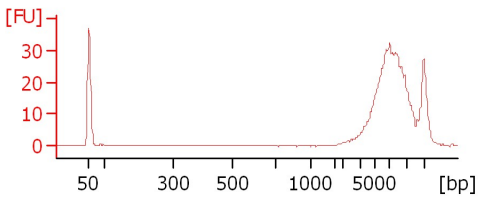
LH_2 PacBio Lib



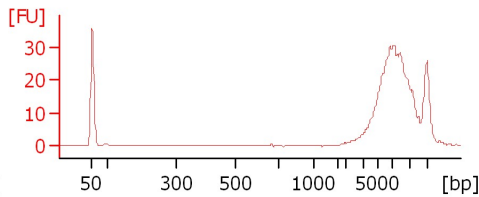
Horseweed PacBio Lib



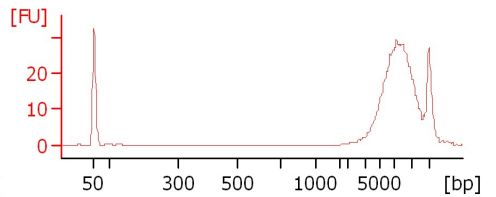
BAC 6 PacBio Lib



BAC 7 PacBio Lib



BAC 8 PacBio Lib



Assay Class: DNA 12000
 Data Path: C:\...ents and Settings\Bioanalyzer\2012-08-07\2012-08-07_005.xad

Created: 8/7/2012 2:14:58 PM
 Modified: 8/7/2012 2:37:16 PM

Electrophoresis File Run Summary (Chip Summary)

Sample Name	Sample Comment	Rest. Digest	Status	Observation	Result Label	Result Color
LH-1 PacBio Lib		<input type="checkbox"/>	✓			
LH_2 PacBio Lib		<input type="checkbox"/>	✓			
Horseweed PacBio Lib		<input type="checkbox"/>	✓			
BAC 6 PacBio Lib		<input type="checkbox"/>	✓			
BAC 7 PacBio Lib		<input type="checkbox"/>	✓			
BAC 8 PacBio Lib		<input type="checkbox"/>	✓			
		<input type="checkbox"/>				
		<input type="checkbox"/>				
		<input type="checkbox"/>				
		<input type="checkbox"/>				
		<input type="checkbox"/>				
Ladder		<input type="checkbox"/>	✓			

Chip Lot #

Reagent Kit Lot #

Chip Comments :

Assay Class: DNA 12000
Data Path: C:\...ents and Settings\Bioanalyzer\2012-08-07\2012-08-07_005.xad

Created: 8/7/2012 2:14:58 PM
Modified: 8/7/2012 2:37:16 PM

Electrophoresis Assay Details

General Analysis Settings

Number of Available Sample and Ladder Wells (Max.) : 13
Minimum Visible Range [s] : 20
Maximum Visible Range [s] : 99
Start Analysis Time Range [s] : 20
End Analysis Time Range [s] : 98.95
Ladder Concentration [ng/ μ l] : 44
Uses Standard Area for Ladder Fragments
Lower Marker Concentration [ng/ μ l] : 8.3
Upper Marker Concentration [ng/ μ l] : 4.2
Used Upper Marker for Quantitation
This is a Qualitative Assay Only
Standard Curve Fit is Point to Point
Show Data Aligned to Lower and Upper Marker

Integrator Settings

Integration Start Time [s] : 20
Integration End Time [s] : 98.95
Slope Threshold : 0.8
Height Threshold [FU] : 20
Area Threshold : 0.1
Width Threshold [s] : 0.5
Baseline Plateau [s] : 0.5

Filter Settings

Filter Width [s] : 0.5
Polynomial Order : 4

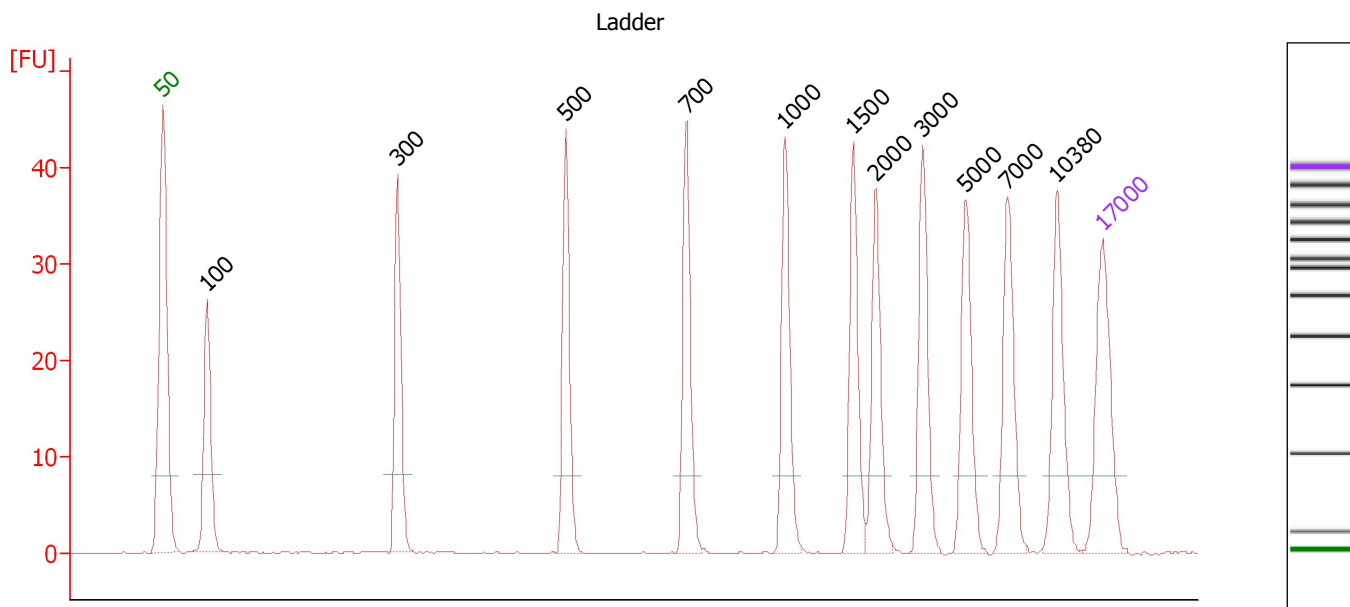
Ladder

Ladder Peak	Size	Area
1	50	120
2	100	48
3	300	61
4	500	77
5	700	81
6	1000	86
7	1500	92
8	2000	92
9	3000	96
10	5000	100
11	7000	98
12	10380	102
13	17000	110

Assay Class: DNA 12000
 Data Path: C:\...ents and Settings\Bioanalyzer\2012-08-07\2012-08-07_005.xad

Created: 8/7/2012 2:14:58 PM
 Modified: 8/7/2012 2:37:16 PM

Electropherogram Summary



Peak table for Ladder

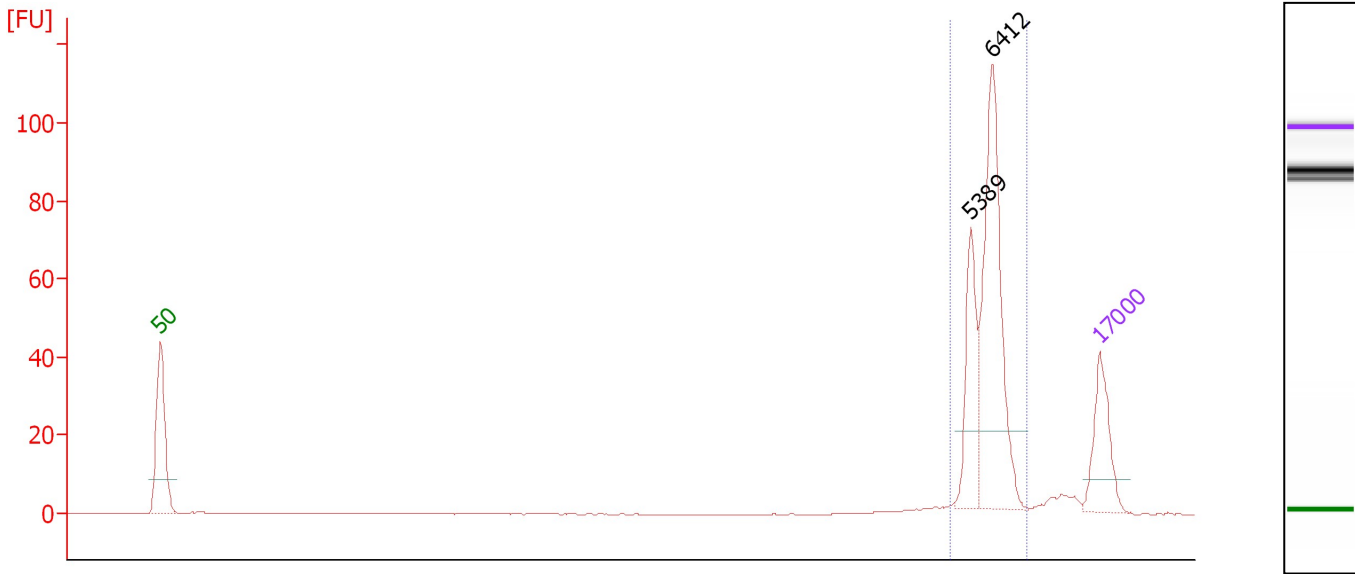
Peak	Size [bp]	Conc. [ng/μl]	Molarity [nmol/l]	Observations
1	50	8.30	251.5	Lower Marker
2	100	4.00	60.6	Ladder Peak
3	300	4.00	20.2	Ladder Peak
4	500	4.00	12.1	Ladder Peak
5	700	4.00	8.7	Ladder Peak
6	1,000	4.00	6.1	Ladder Peak
7	1,500	4.00	4.0	Ladder Peak
8	2,000	4.00	3.0	Ladder Peak
9	3,000	4.00	2.0	Ladder Peak
10	5,000	4.00	1.2	Ladder Peak
11	7,000	4.00	0.9	Ladder Peak
12	10,380	4.00	0.6	Ladder Peak
13	17,000	4.20	0.4	Upper Marker

Assay Class: DNA 12000
 Data Path: C:\...ents and Settings\Bioanalyzer\2012-08-07\2012-08-07_005.xad

Created: 8/7/2012 2:14:58 PM
 Modified: 8/7/2012 2:37:16 PM

Electropherogram Summary Continued ...

LH-1 PacBio Lib



Overall Results for sample 1 : LH-1 PacBio Lib

Number of peaks found: 2 Area 1: 144.5

Peak table for sample 1 : LH-1 PacBio Lib

Peak	Size [bp]	Conc. [ng/μl]	Molarity [nmol/l]	Observations
1	50	8.30	251.5	Lower Marker
2	5,389	5.45	1.5	
3	6,412	13.62	3.2	
4	17,000	4.20	0.4	Upper Marker

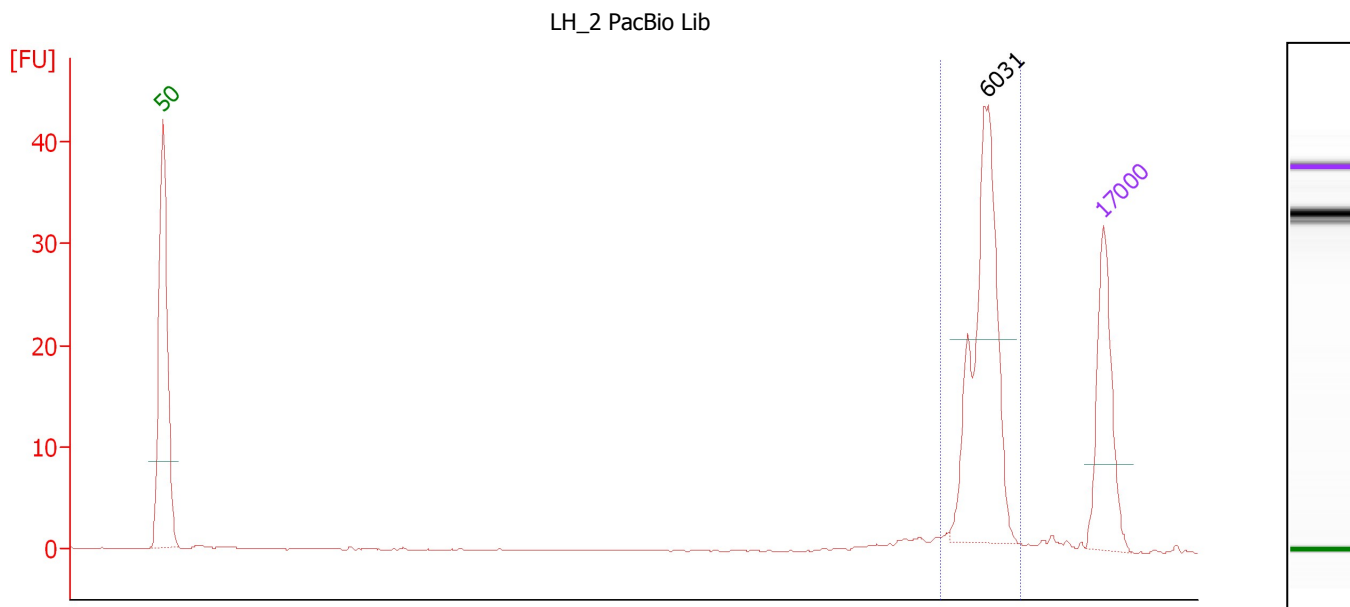
Region table for sample 1 : LH-1 PacBio Lib

From [bp]	To [bp]	Average Size [bp]	Conc. [ng/μl]	Area	% of Total	Size distribution in CV [%]	Color
4,396	8,541	6,155	19.71	144.5	90	10.6	Blue

Assay Class: DNA 12000
 Data Path: C:\...ents and Settings\Bioanalyzer\2012-08-07\2012-08-07_005.xad

Created: 8/7/2012 2:14:58 PM
 Modified: 8/7/2012 2:37:16 PM

Electropherogram Summary Continued ...



Overall Results for sample 2 : LH_2 PacBio Lib

Number of peaks found: 1 Area 1: 54.7

Peak table for sample 2 : LH_2 PacBio Lib

Peak	Size [bp]	Conc. [ng/μl]	Molarity [nmol/l]	Observations
1	50	8.30	251.5	Lower Marker
2	6,031	9.74	2.4	
3	17,000	4.20	0.4	Upper Marker

Region table for sample 2 : LH_2 PacBio Lib

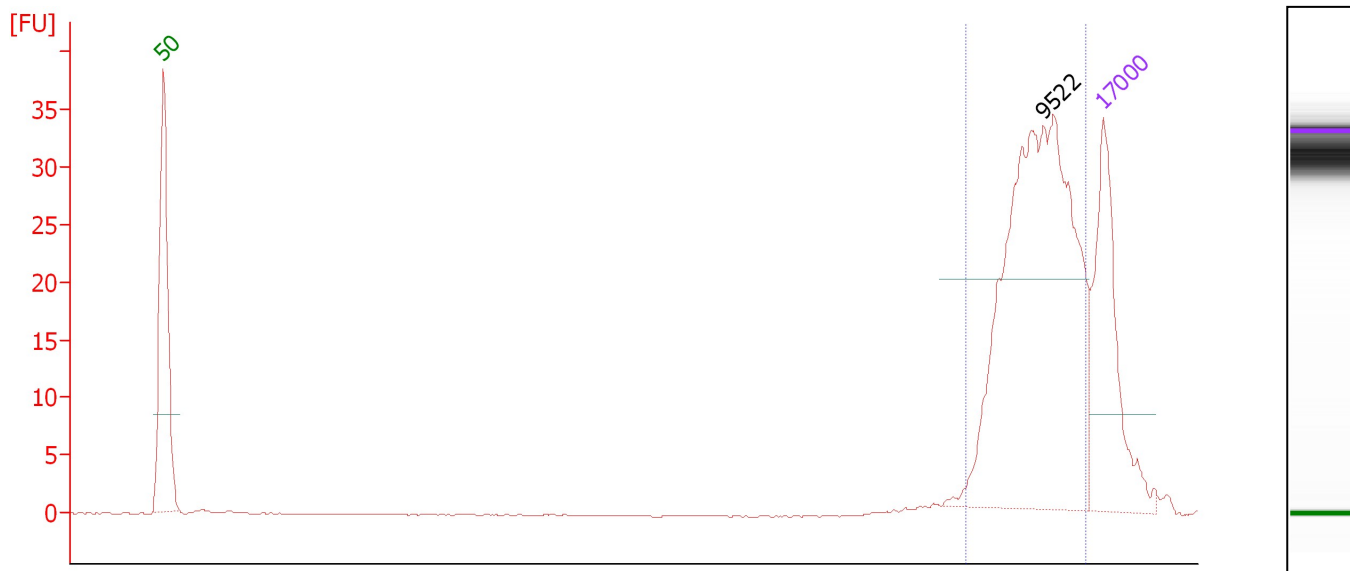
From [bp]	To [bp]	Average Size [bp]	Conc. [ng/μl]	Area	% of Total	Size distribution in CV [%]	Color
3,754	7,809	5,815	10.41	54.7	84	11.0	Blue

Assay Class: DNA 12000
 Data Path: C:\...ents and Settings\Bioanalyzer\2012-08-07\2012-08-07_005.xad

Created: 8/7/2012 2:14:58 PM
 Modified: 8/7/2012 2:37:16 PM

Electropherogram Summary Continued ...

Horseweed PacBio Lib



Overall Results for sample 3 : Horseweed PacBio Lib

Number of peaks found: 1 Area 1: 117.8

Peak table for sample 3 : Horseweed PacBio Lib

Peak	Size [bp]	Conc. [ng/μl]	Molarity [nmol/l]	Observations
1	50	8.30	251.5	Lower Marker
2	9,522	13.74	2.2	
3	17,000	4.20	0.4	Upper Marker

Region table for sample 3 : Horseweed PacBio Lib

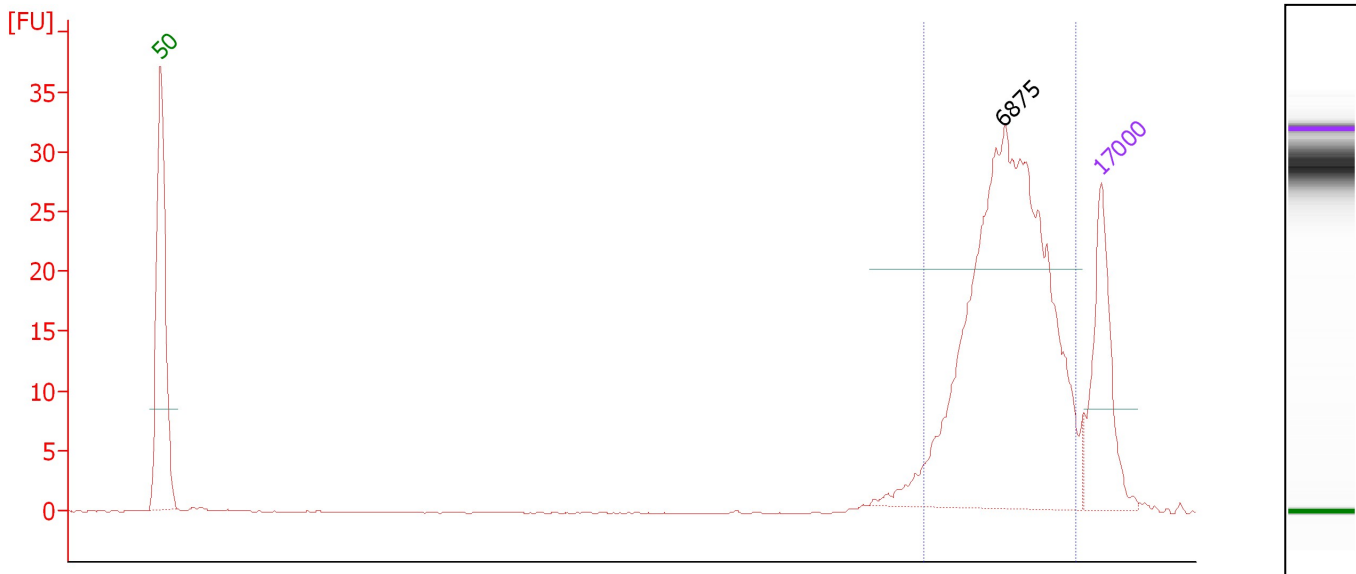
From [bp]	To [bp]	Average Size [bp]	Conc. [ng/μl]	Area	% of Total	Size distribution in CV [%]	Color
4,951	14,482	9,206	13.66	117.8	92	24.2	Blue

Assay Class: DNA 12000
Data Path: C:\...ents and Settings\Bioanalyzer\2012-08-07\2012-08-07_005.xad

Created: 8/7/2012 2:14:58 PM
Modified: 8/7/2012 2:37:16 PM

Electropherogram Summary Continued ...

BAC 6 PacBio Lib



Overall Results for sample 4 : BAC 6 PacBio Lib

Number of peaks found: 1 Area 1: 119.9

Peak table for sample 4 : BAC 6 PacBio Lib

Peak	Size [bp]	Conc. [ng/μl]	Molarity [nmol/l]	Observations
1	50	8.30	251.5	Lower Marker
2	6,875	23.75	5.2	
3	17,000	4.20	0.4	Upper Marker

Region table for sample 4 : BAC 6 PacBio Lib

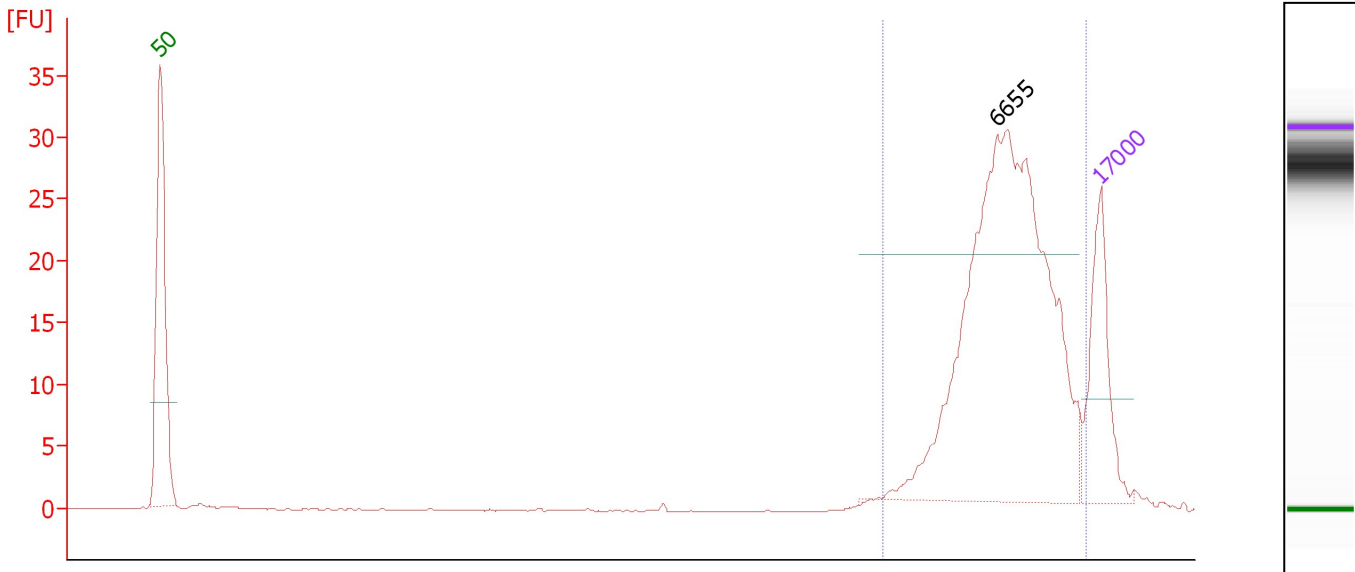
From [bp]	To [bp]	Average Size [bp]	Conc. [ng/μl]	Area	% of Total	Size distribution in CV [%]	Color
3,116	13,410	7,449	23.06	119.9	91	29.0	Blue

Assay Class: DNA 12000
Data Path: C:\...ents and Settings\Bioanalyzer\2012-08-07\2012-08-07_005.xad

Created: 8/7/2012 2:14:58 PM
Modified: 8/7/2012 2:37:16 PM

Electropherogram Summary Continued ...

BAC 7 PacBio Lib



Overall Results for sample 5 : BAC 7 PacBio Lib

Number of peaks found: 1 Area 1: 121.5

Peak table for sample 5 : BAC 7 PacBio Lib

Peak	Size [bp]	Conc. [ng/μl]	Molarity [nmol/l]	Observations
1	50	8.30	251.5	Lower Marker
2	6,655	24.30	5.5	
3	17,000	4.20	0.4	Upper Marker

Region table for sample 5 : BAC 7 PacBio Lib

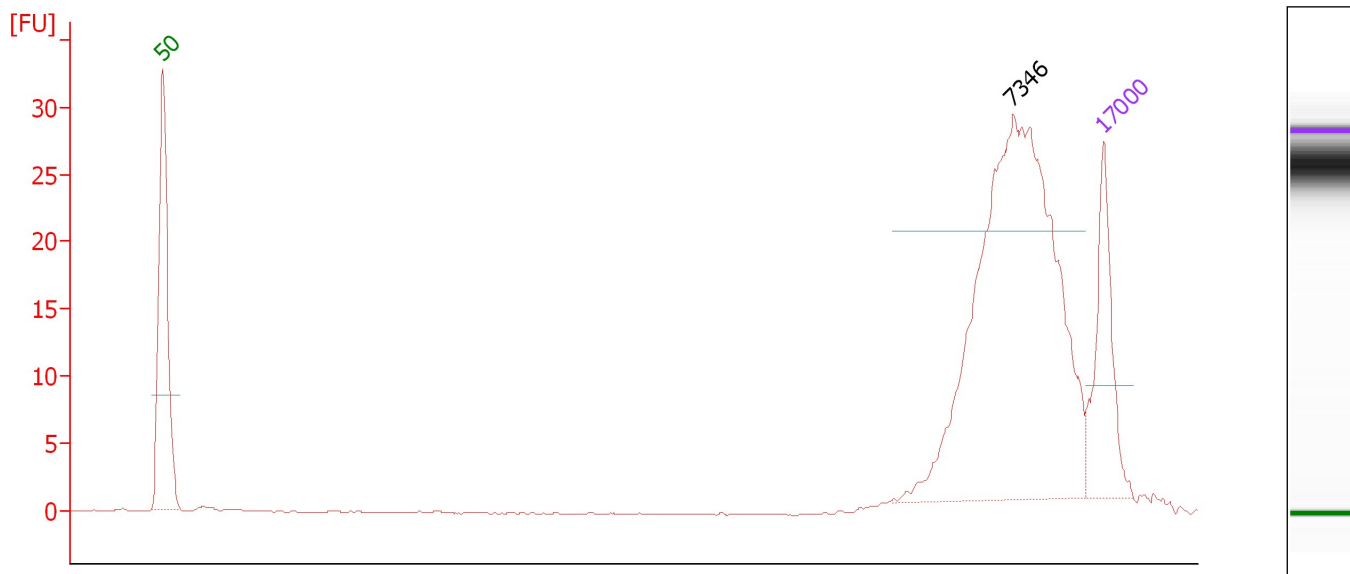
From [bp]	To [bp]	Average Size [bp]	Conc. [ng/μl]	Area	% of Total	Size distribution in CV [%]	Color
2,220	14,891	7,488	25.50	121.5	95	33.4	Blue

Assay Class: DNA 12000
 Data Path: C:\...ents and Settings\Bioanalyzer\2012-08-07\2012-08-07_005.xad

Created: 8/7/2012 2:14:58 PM
 Modified: 8/7/2012 2:37:16 PM

Electropherogram Summary Continued ...

BAC 8 PacBio Lib



Overall Results for sample 6 : BAC 8 PacBio Lib

Number of peaks found: 1

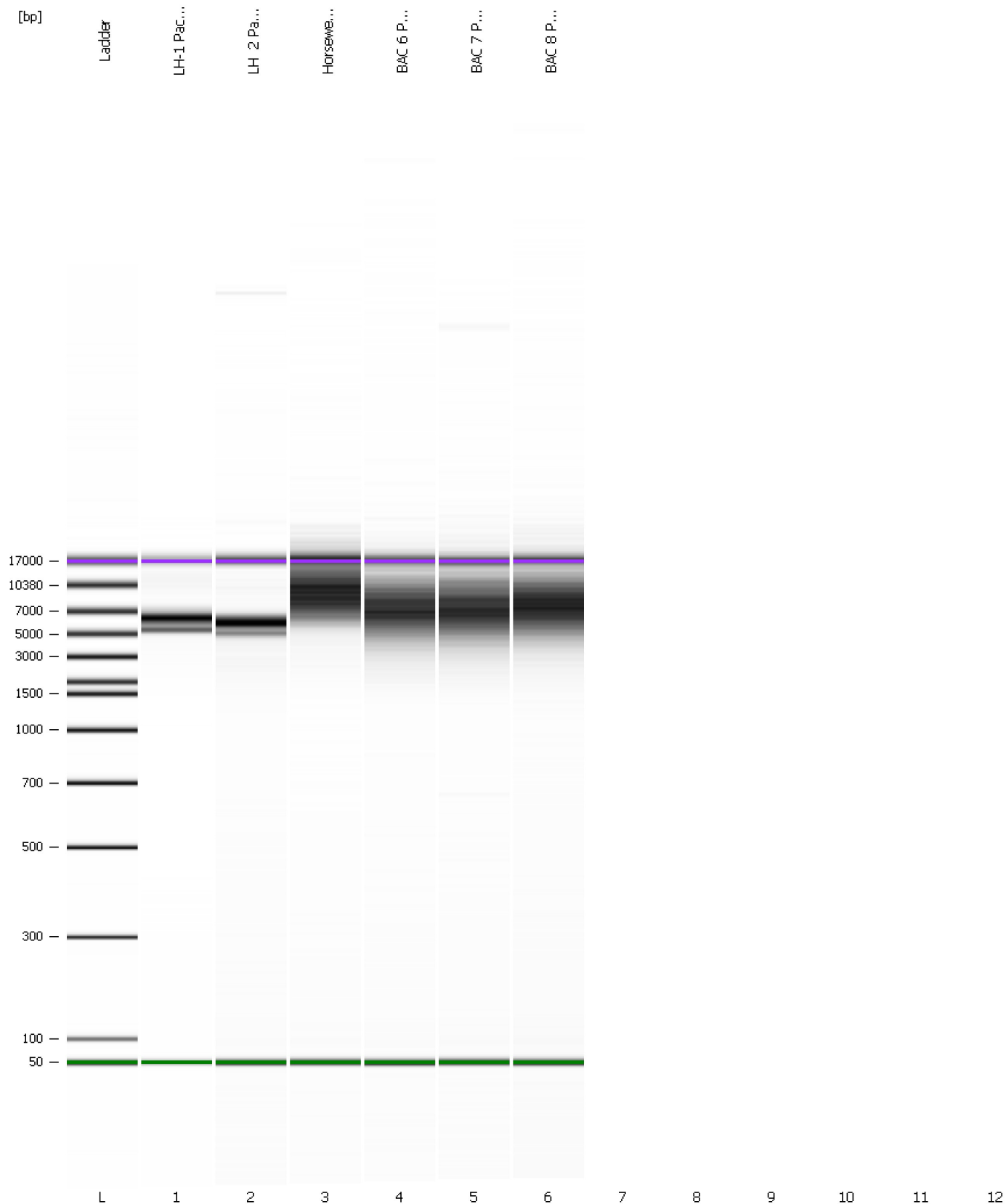
Peak table for sample 6 : BAC 8 PacBio Lib

Peak	Size [bp]	Conc. [ng/μl]	Molarity [nmol/l]	Observations
1	50	8.30	251.5	Lower Marker
2	7,346	24.87	5.1	
3	17,000	4.20	0.4	Upper Marker

Assay Class: DNA 12000
Data Path: C:\...ents and Settings\Bioanalyzer\2012-08-07\2012-08-07_005.xad

Created: 8/7/2012 2:14:58 PM
Modified: 8/7/2012 2:37:16 PM

Gel Image



Assay Class: DNA 12000
Data Path: C:\...ents and Settings\Bioanalyzer\2012-08-07\2012-08-07_005.xad

Created: 8/7/2012 2:14:58 PM
Modified: 8/7/2012 2:37:16 PM

Invalid Samples

Sample 7 has not been run, no results available.

Sample 8 has not been run, no results available.

Sample 9 has not been run, no results available.

Sample 10 has not been run, no results available.

Sample 11 has not been run, no results available.

Sample 12 has not been run, no results available.