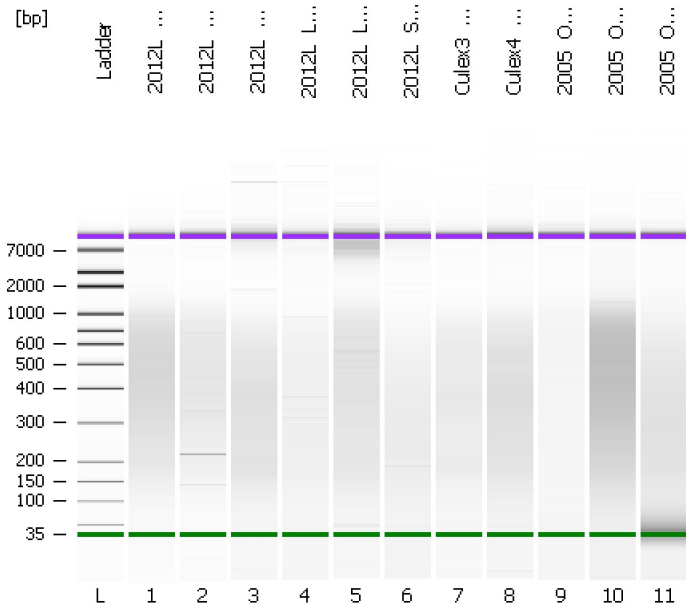


Assay Class: High Sensitivity DNA Assay
Data Path: C:\...ents and Settings\Bioanalyzer\2012-08-07\2012-08-07_007.xad

Created: 8/7/2012 3:14:12 PM
Modified: 8/7/2012 3:58:27 PM

Electrophoresis File Run Summary



Instrument Information:

Instrument Name: DE13701086 Firmware: C.01.069
Serial#: DE13701086 Type: G2938B

Assay Information:

Assay Origin Path: C:\Program Files\Agilent\2100 bioanalyzer\2100 expert\assays\dsDNA\High Sensitivity DNA.xsy
Assay Class: High Sensitivity DNA Assay
Version: 1.03
Assay Comments: Copyright © 2003-2010 Agilent Technologies

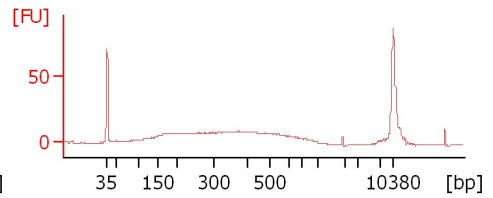
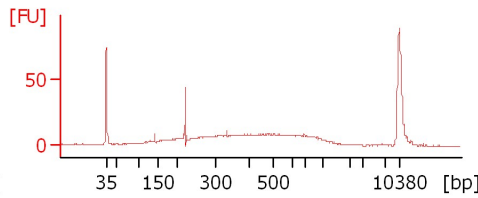
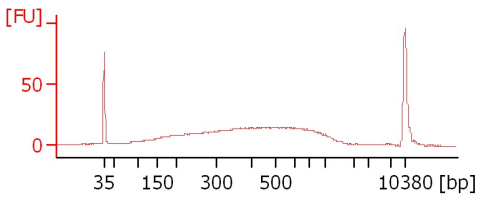
Chip Information:

Chip Lot #:
Reagent Kit Lot #:
Chip Comments:

2012L_MINE001_10x15:90

2012L_MINE002_8x15:90

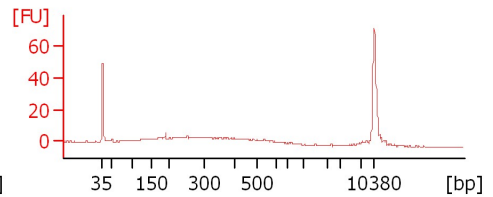
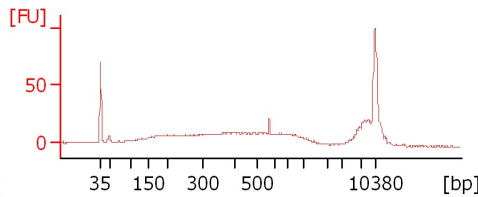
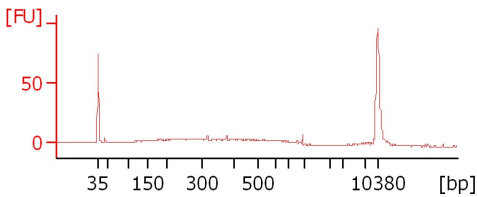
2012L_MINE109_8x15:90



2012L_LUPI004_8x15:90

2012L_LUPI087_8x15:90

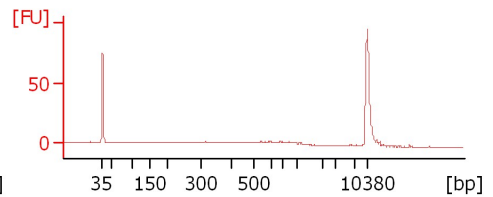
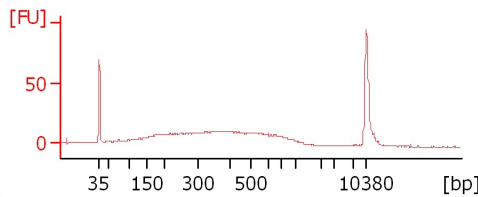
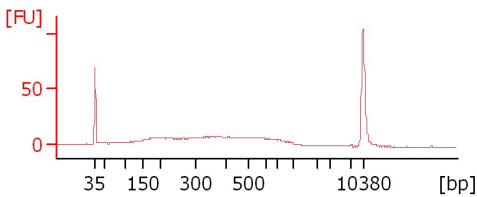
2012L_SAGA_051_8x15:90



Culex3_9x15:90_1:3dil

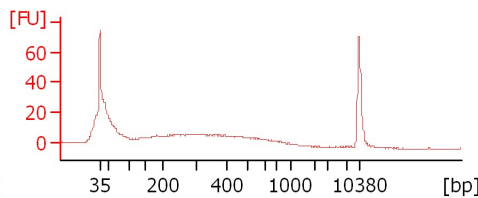
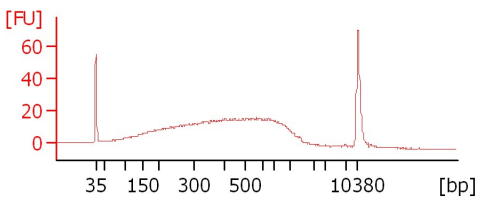
Culex4_10x15:90_1:3dil

2005_OKJ016_8x15:90



2005_OKJ018_8x15:90

2005_OKJ023_8x15:90



Assay Class: High Sensitivity DNA Assay
 Data Path: C:\...ents and Settings\Bioanalyzer\2012-08-07\2012-08-07_007.xad

Created: 8/7/2012 3:14:12 PM
 Modified: 8/7/2012 3:58:27 PM

Electrophoresis File Run Summary (Chip Summary)

Sample Name	Sample Comment	Rest. Digest	Status	Observation	Result Label	Result Color
2012L_MINE001_10x15:90		<input type="checkbox"/>	✓			
2012L_MINE002_8x15:90		<input type="checkbox"/>	✓			
2012L_MINE109_8x15:90		<input type="checkbox"/>	✓			
2012L_LUPI004_8x15:90		<input type="checkbox"/>	✓			
2012L_LUPI087_8x15:90		<input type="checkbox"/>	✓			
2012L_SAGA_051_8x15:90		<input type="checkbox"/>	✓			
Culex3_9x15:90_1:3dil		<input type="checkbox"/>	✓			
Culex4_10x15:90_1:3dil		<input type="checkbox"/>	✓			
2005_OKJ016_8x15:90		<input type="checkbox"/>	✓			
2005_OKJ018_8x15:90		<input type="checkbox"/>	✓			
2005_OKJ023_8x15:90		<input type="checkbox"/>	✓			
Ladder		<input type="checkbox"/>	✓			

Chip Lot #

Reagent Kit Lot #

Chip Comments :

Assay Class: High Sensitivity DNA Assay
Data Path: C:\...ents and Settings\Bioanalyzer\2012-08-07\2012-08-07_007.xad

Created: 8/7/2012 3:14:12 PM
Modified: 8/7/2012 3:58:27 PM

Electrophoresis Assay Details

General Analysis Settings

Number of Available Sample and Ladder Wells (Max.) : 12
Minimum Visible Range [s] : 32
Maximum Visible Range [s] : 138
Start Analysis Time Range [s] : 33
End Analysis Time Range [s] : 137.5
Ladder Concentration [pg/ μ l] : 1950
Uses Standard Area for Ladder Fragments
Lower Marker Concentration [pg/ μ l] : 125
Upper Marker Concentration [pg/ μ l] : 75
Used Upper Marker for Quantitation
Standard Curve Fit is Point to Point
Show Data Aligned to Lower and Upper Marker

Integrator Settings

Integration Start Time [s] : 33.05
Integration End Time [s] : 137
Slope Threshold : 0.8
Height Threshold [FU] : 5
Area Threshold : 0.1
Width Threshold [s] : 0.6
Baseline Plateau [s] : 0.5

Filter Settings

Filter Width [s] : 0.5
Polynomial Order : 4

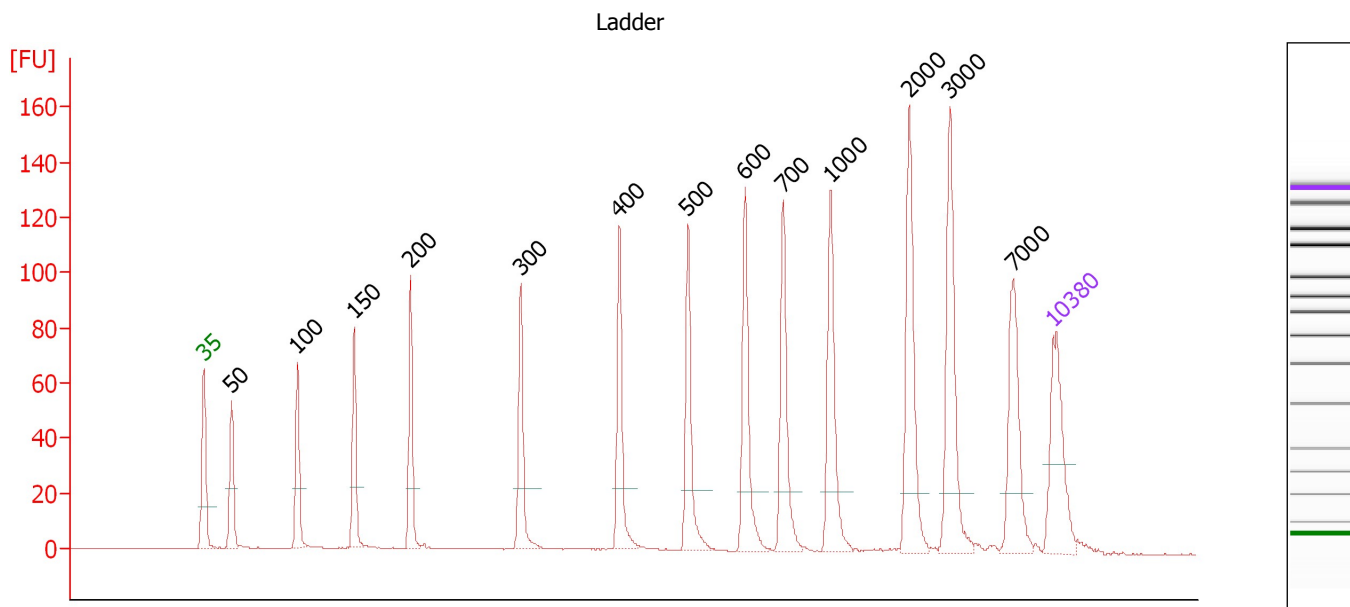
Ladder

Ladder Peak	Size	Area
1	35	160
2	50	210
3	100	208
4	150	221
5	200	242
6	300	270
7	400	305
8	500	306
9	600	336
10	700	321
11	1000	366
12	2000	413
13	3000	411
14	7000	400
15	10380	214

Assay Class: High Sensitivity DNA Assay
 Data Path: C:\...ents and Settings\Bioanalyzer\2012-08-07\2012-08-07_007.xad

Created: 8/7/2012 3:14:12 PM
 Modified: 8/7/2012 3:58:27 PM

Electropherogram Summary



Overall Results for Ladder

Noise: 0.1

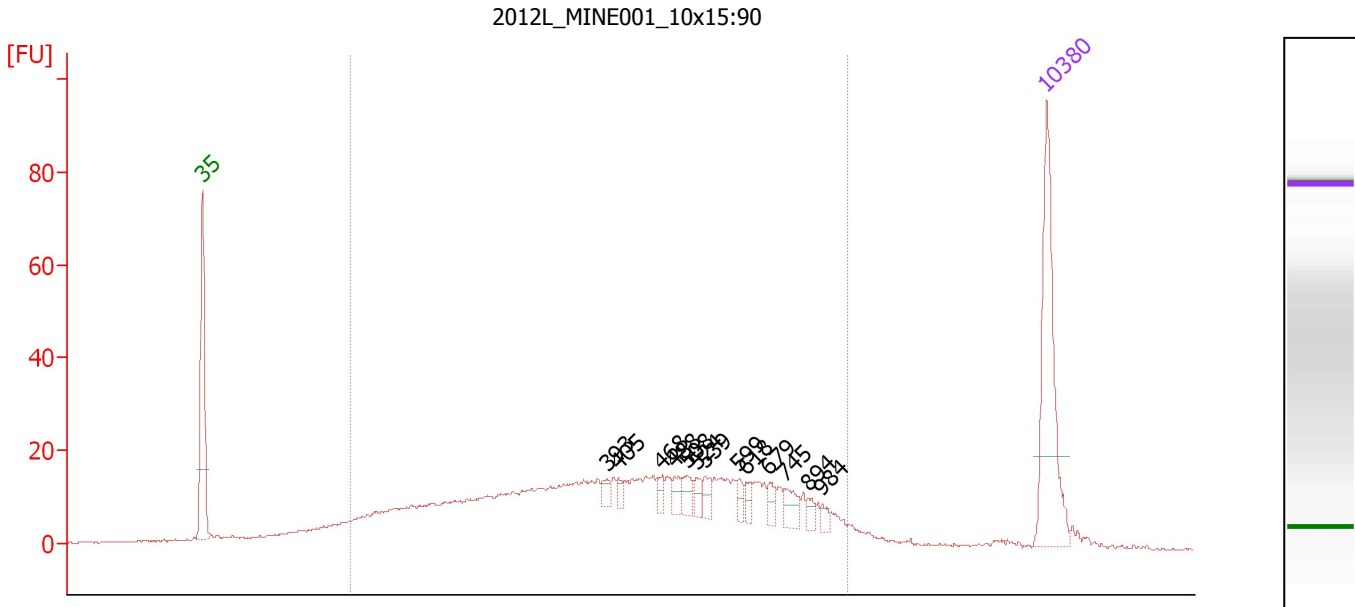
Peak table for Ladder

Peak	Size [bp]	Conc. [pg/μl]	Molarity [pmol/l]	Observations
1	35	125.00	5,411.3	Lower Marker
2	50	150.00	4,545.5	Ladder Peak
3	100	150.00	2,272.7	Ladder Peak
4	150	150.00	1,515.2	Ladder Peak
5	200	150.00	1,136.4	Ladder Peak
6	300	150.00	757.6	Ladder Peak
7	400	150.00	568.2	Ladder Peak
8	500	150.00	454.5	Ladder Peak
9	600	150.00	378.8	Ladder Peak
10	700	150.00	324.7	Ladder Peak
11	1,000	150.00	227.3	Ladder Peak
12	2,000	150.00	113.6	Ladder Peak
13	3,000	150.00	75.8	Ladder Peak
14	7,000	150.00	32.5	Ladder Peak
15	10,380	75.00	10.9	Upper Marker

Assay Class: High Sensitivity DNA Assay
 Data Path: C:\...ents and Settings\Bioanalyzer\2012-08-07\2012-08-07_007.xad

Created: 8/7/2012 3:14:12 PM
 Modified: 8/7/2012 3:58:27 PM

Electropherogram Summary Continued ...



Overall Results for sample 1 : 2012L MINE001 10x15:90

Number of peaks found: 13 Corr. Area 1: 658.1
 Noise: 0.2

Peak table for sample 1 : 2012L MINE001 10x15:90

Peak	Size [bp]	Conc. [pg/μl]	Molarity [pmol/l]	Observations
1	35	125.00	5,411.3	Lower Marker
2	393	6.45	24.9	
3	405	5.22	19.5	
4	468	6.76	21.9	
5	488	8.46	26.3	
6	508	10.59	31.6	
7	524	7.85	22.7	
8	539	9.04	25.4	
9	599	6.12	15.5	
10	618	5.99	14.7	
11	679	7.49	16.7	
12	745	12.46	25.4	
13	894	5.26	8.9	
14	984	4.02	6.2	
15	10,380	75.00	10.9	Upper Marker

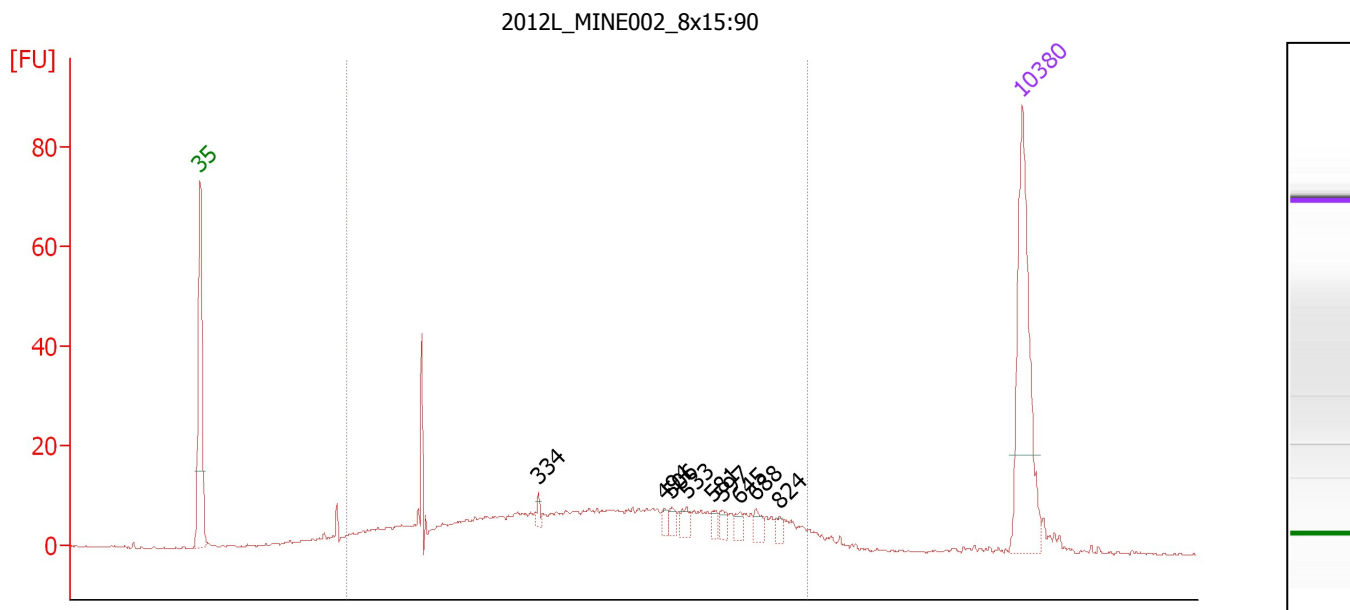
Region table for sample 1 : 2012L MINE001 10x15:90

From [bp]	To [bp]	Average Size [bp]	Molarity [pmol/l]	Conc. [pg/μl]	Corr. Area	% of Total	Size distribution in CV [%]	Color
149	1,291	459	3,569.6	784.30	658.1	86	47.3	Blue

Assay Class: High Sensitivity DNA Assay
 Data Path: C:\...ents and Settings\Bioanalyzer\2012-08-07\2012-08-07_007.xad

Created: 8/7/2012 3:14:12 PM
 Modified: 8/7/2012 3:58:27 PM

Electropherogram Summary Continued ...



Overall Results for sample 2 : 2012L_MINE002_8x15:90

Number of peaks found: 9 Corr. Area 1: 368.7
 Noise: 0.1

Peak table for sample 2 : 2012L_MINE002_8x15:90

Peak	Size [bp]	Conc. [pg/μl]	Molarity [pmol/l]	Observations
1	35	125.00	5,411.3	Lower Marker
2	334	4.40	20.0	
3	494	4.23	13.0	
4	506	5.01	15.0	
5	533	6.70	19.0	
6	581	4.02	10.5	
7	597	4.31	10.9	
8	645	5.06	11.9	
9	688	6.18	13.6	
10	824	3.85	7.1	
11	10,380	75.00	10.9	Upper Marker

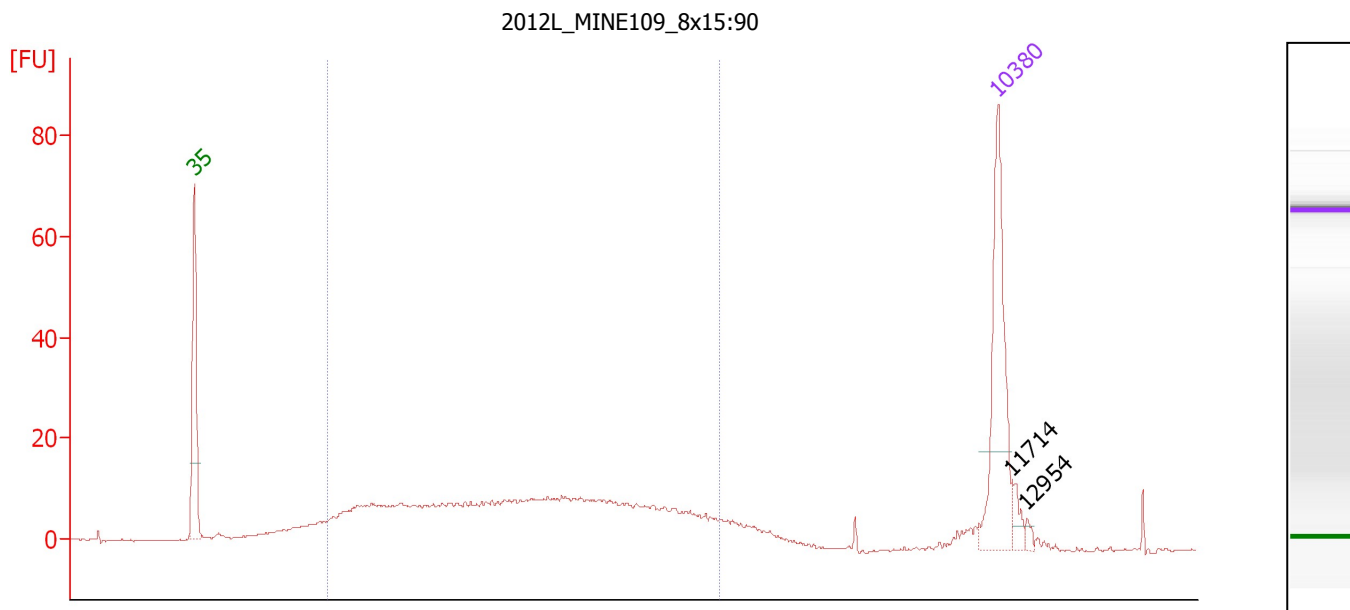
Region table for sample 2 : 2012L_MINE002_8x15:90

From [bp]	To [bp]	Average Size [bp]	Molarity [pmol/l]	Conc. [pg/μl]	Corr. Area	% of Total	Size distribution in CV [%]	Color
151	1,000	436	2,064.2	446.53	368.7	86	43.3	Blue

Assay Class: High Sensitivity DNA Assay
 Data Path: C:\...ents and Settings\Bioanalyzer\2012-08-07\2012-08-07_007.xad

Created: 8/7/2012 3:14:12 PM
 Modified: 8/7/2012 3:58:27 PM

Electropherogram Summary Continued ...



Overall Results for sample 3 : 2012L_MINE109_8x15:90

Number of peaks found: 2 Corr. Area 1: 377.5
 Noise: 0.2

Peak table for sample 3 : 2012L_MINE109_8x15:90

Peak	Size [bp]	Conc. [pg/μl]	Molarity [pmol/l]	Observations
1	35	125.00	5,411.3	Lower Marker
2	10,380	75.00	10.9	Upper Marker
3	11,714	0.00	0.0	
4	12,954	0.00	0.0	

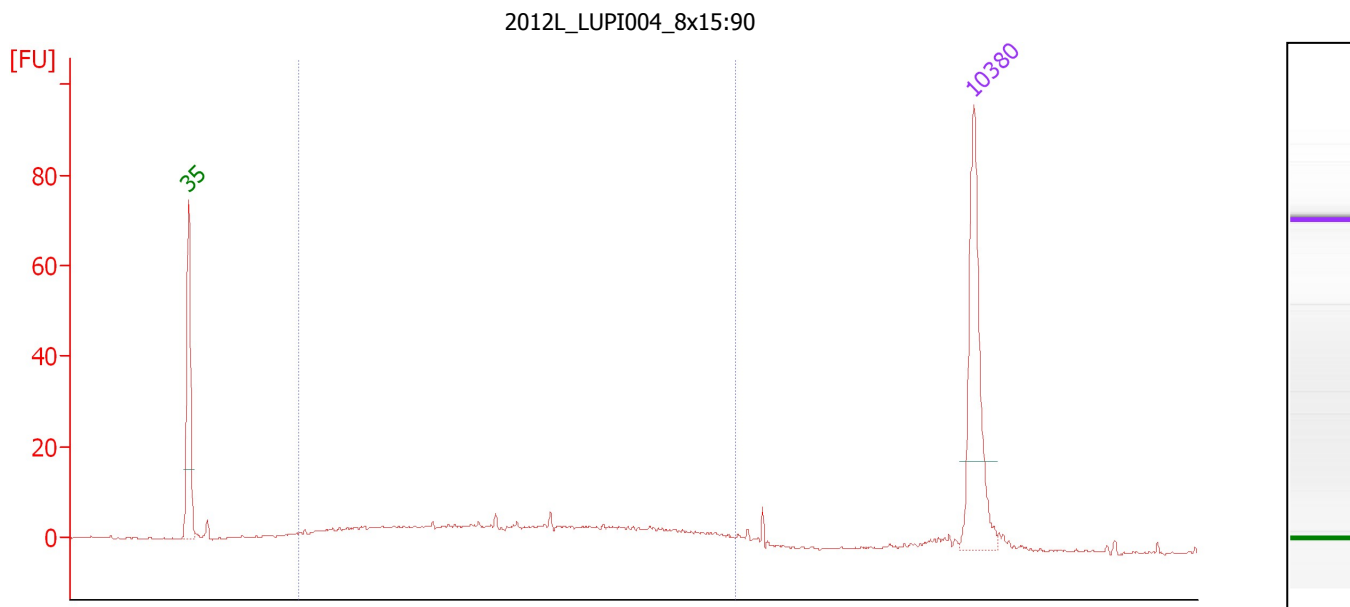
Region table for sample 3 : 2012L_MINE109_8x15:90

From [bp]	To [bp]	Average Size [bp]	Molarity [pmol/l]	Conc. [pg/μl]	Corr. Area	% of Total	Size distribution in CV [%]	Color
142	639	347	2,543.0	465.62	377.5	80	36.3	Blue

Assay Class: High Sensitivity DNA Assay
 Data Path: C:\...ents and Settings\Bioanalyzer\2012-08-07\2012-08-07_007.xad

Created: 8/7/2012 3:14:12 PM
 Modified: 8/7/2012 3:58:27 PM

Electropherogram Summary Continued ...



Overall Results for sample 4 : 2012L_LUPI004_8x15:90

Number of peaks found: 0 Corr. Area 1: 180.8
 Noise: 0.2

Peak table for sample 4 : 2012L_LUPI004_8x15:90

Peak	Size [bp]	Conc. [pg/μl]	Molarity [pmol/l]	Observations
1	35	125.00	5,411.3	Lower Marker
2	10,380	75.00	10.9	Upper Marker

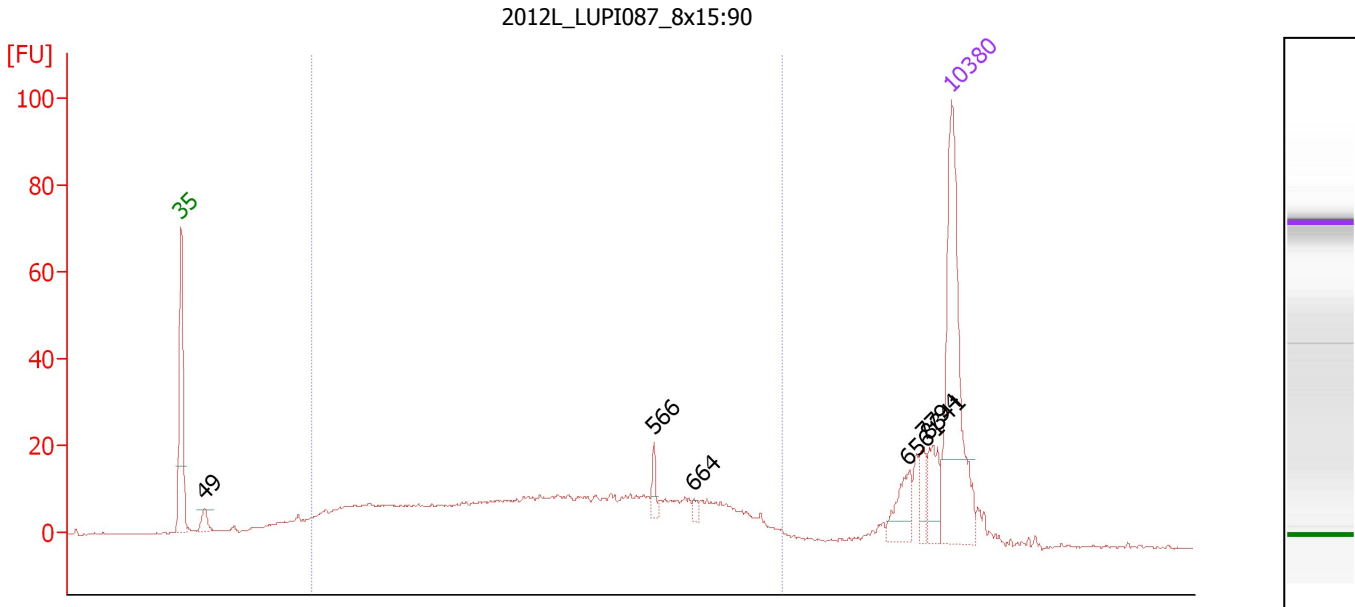
Region table for sample 4 : 2012L_LUPI004_8x15:90

From [bp]	To [bp]	Average Size [bp]	Molarity [pmol/l]	Conc. [pg/μl]	Corr. Area	% of Total	Size distribution in CV [%]	Color
122	786	368	1,204.9	218.80	180.8	85	41.0	Blue

Assay Class: High Sensitivity DNA Assay
 Data Path: C:\...ents and Settings\Bioanalyzer\2012-08-07\2012-08-07_007.xad

Created: 8/7/2012 3:14:12 PM
 Modified: 8/7/2012 3:58:27 PM

Electropherogram Summary Continued ...



Overall Results for sample 5 : 2012L_LUPI087_8x15:90

Number of peaks found: 6 Corr. Area 1: 451.1
 Noise: 0.2

Peak table for sample 5 : 2012L_LUPI087_8x15:90

Peak	Size [bp]	Conc. [pg/μl]	Molarity [pmol/l]	Observations
1	35	125.00	5,411.3	Lower Marker
2	49	9.11	281.5	
3	566	6.15	16.4	
4	664	2.71	6.2	
5	6,561	15.32	3.5	
6	7,794	8.21	1.6	
7	8,341	14.38	2.6	
8	10,380	75.00	10.9	Upper Marker

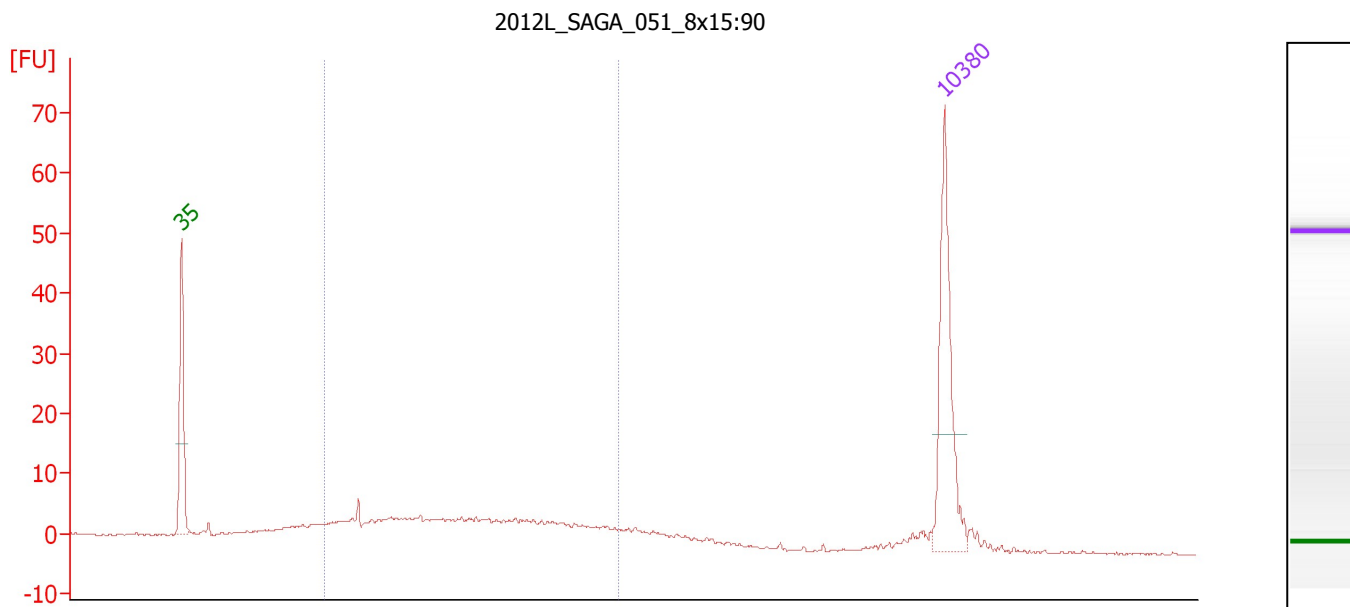
Region table for sample 5 : 2012L_LUPI087_8x15:90

From [bp]	To [bp]	Average Size [bp]	Molarity [pmol/l]	Conc. [pg/μl]	Corr. Area	% of Total	Size distribution in CV [%]	Color
144	1,451	461	1,908.9	403.97	451.1	77	51.5	Blue

Assay Class: High Sensitivity DNA Assay
 Data Path: C:\...ents and Settings\Bioanalyzer\2012-08-07\2012-08-07_007.xad

Created: 8/7/2012 3:14:12 PM
 Modified: 8/7/2012 3:58:27 PM

Electropherogram Summary Continued ...



Overall Results for sample 6 : 2012L_SAGA_051_8x15:90

Number of peaks found: 0 Corr. Area 1: 132.2
 Noise: 0.1

Peak table for sample 6 : 2012L_SAGA_051_8x15:90

Peak	Size [bp]	Conc. [pg/μl]	Molarity [pmol/l]	Observations
1	35	125.00	5,411.3	Lower Marker
2	10,380	75.00	10.9	Upper Marker

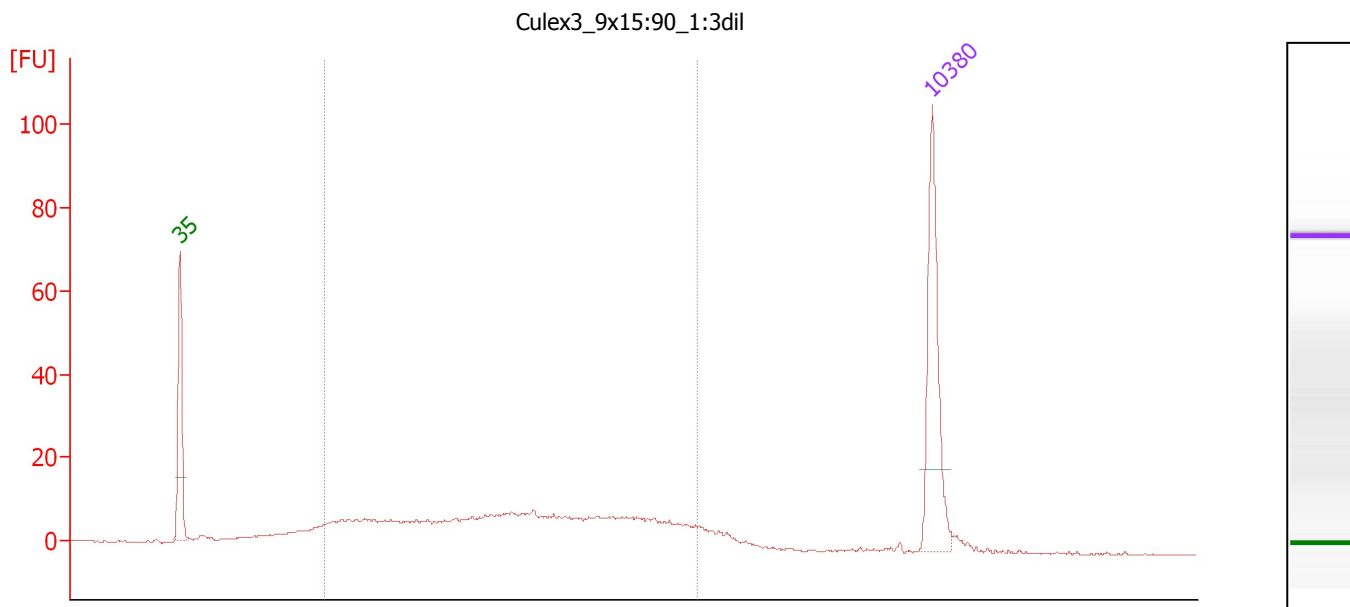
Region table for sample 6 : 2012L_SAGA_051_8x15:90

From [bp]	To [bp]	Average Size [bp]	Molarity [pmol/l]	Conc. [pg/μl]	Corr. Area	% of Total	Size distribution in CV [%]	Color
158	504	311	1,208.0	215.53	132.2	68	29.5	Blue

Assay Class: High Sensitivity DNA Assay
 Data Path: C:\...ents and Settings\Bioanalyzer\2012-08-07\2012-08-07_007.xad

Created: 8/7/2012 3:14:12 PM
 Modified: 8/7/2012 3:58:27 PM

Electropherogram Summary Continued ...



Overall Results for sample 7 : Culex3 9x15:90 1:3dil

Number of peaks found: 0 Corr. Area 1: 313.3
 Noise: 0.1

Peak table for sample 7 : Culex3 9x15:90 1:3dil

Peak	Size [bp]	Conc. [pg/μl]	Molarity [pmol/l]	Observations
1	35	125.00	5,411.3	Lower Marker
2	10,380	75.00	10.9	Upper Marker

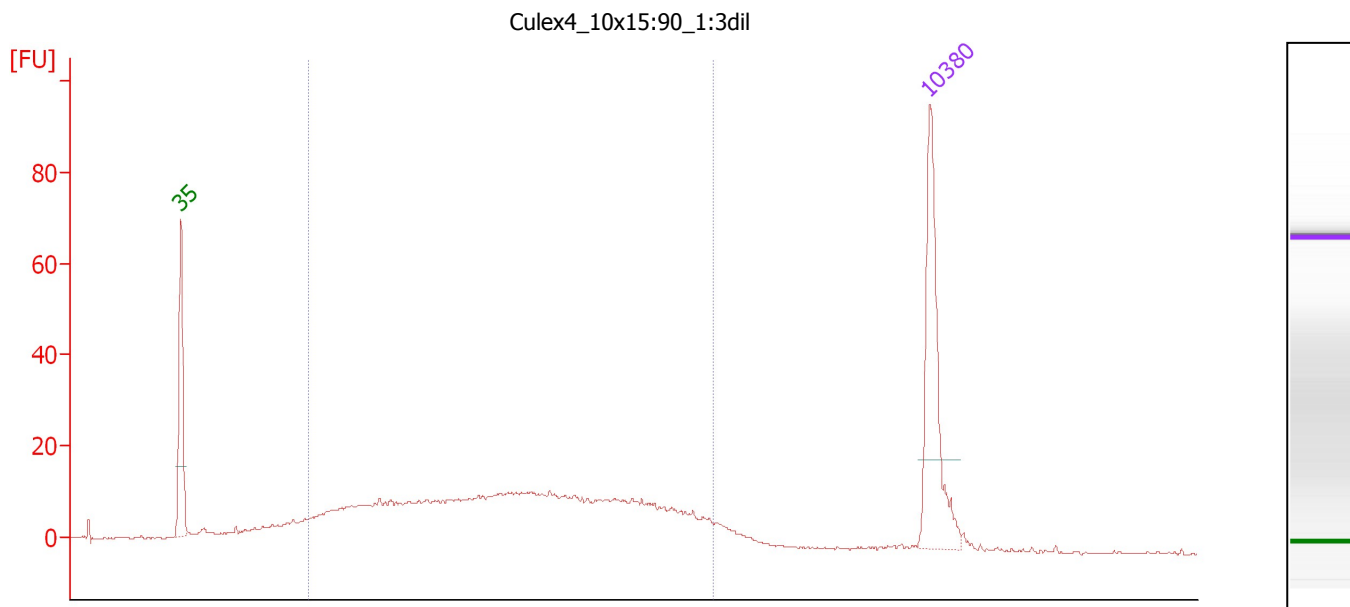
Region table for sample 7 : Culex3 9x15:90 1:3dil

From [bp]	To [bp]	Average Size [bp]	Molarity [pmol/l]	Conc. [pg/μl]	Corr. Area	% of Total	Size distribution in CV [%]	Color
161	732	387	1,722.5	350.43	313.3	80	36.8	Blue

Assay Class: High Sensitivity DNA Assay
 Data Path: C:\...ents and Settings\Bioanalyzer\2012-08-07\2012-08-07_007.xad

Created: 8/7/2012 3:14:12 PM
 Modified: 8/7/2012 3:58:27 PM

Electropherogram Summary Continued ...



Overall Results for sample 8 : Culex4 10x15:90 1:3dil

Number of peaks found: 0 Corr. Area 1: 468.2
 Noise: 0.2

Peak table for sample 8 : Culex4 10x15:90 1:3dil

Peak	Size [bp]	Conc. [pg/μl]	Molarity [pmol/l]	Observations
1	35	125.00	5,411.3	Lower Marker
2	10,380	75.00	10.9	Upper Marker

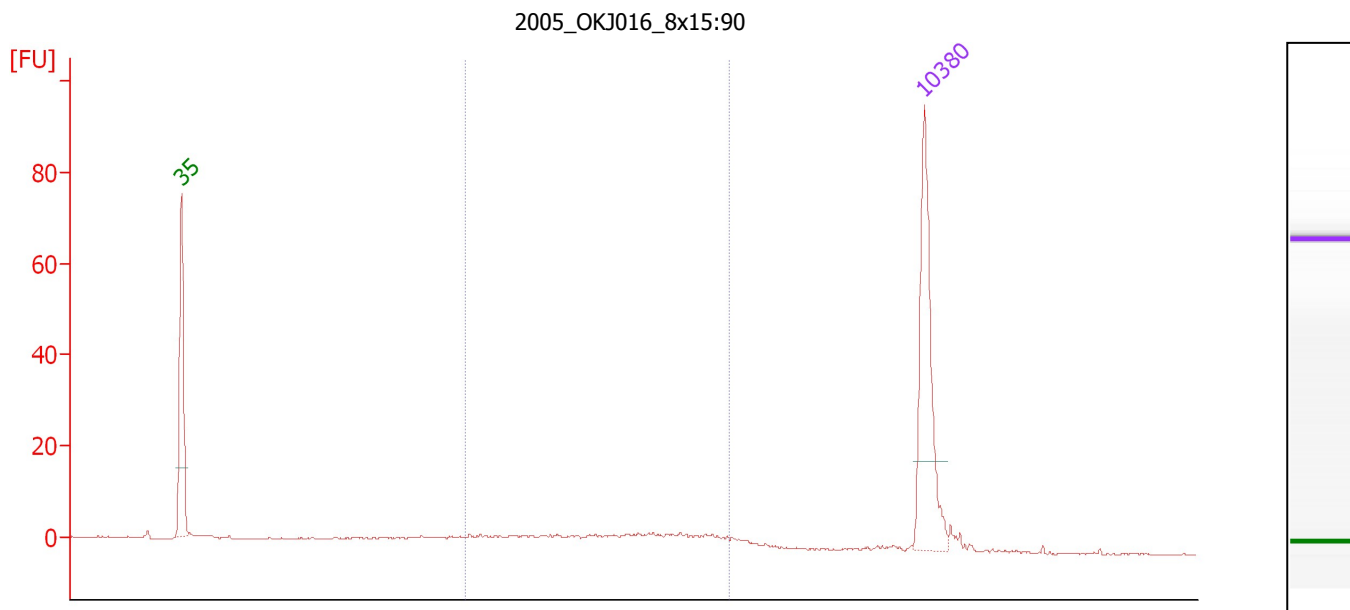
Region table for sample 8 : Culex4 10x15:90 1:3dil

From [bp]	To [bp]	Average Size [bp]	Molarity [pmol/l]	Conc. [pg/μl]	Corr. Area	% of Total	Size distribution in CV [%]	Color
144	858	390	2,466.8	488.76	468.2	85	40.4	Blue

Assay Class: High Sensitivity DNA Assay
 Data Path: C:\...ents and Settings\Bioanalyzer\2012-08-07\2012-08-07_007.xad

Created: 8/7/2012 3:14:12 PM
 Modified: 8/7/2012 3:58:27 PM

Electropherogram Summary Continued ...



Overall Results for sample 9 : 2005 OKJ016 8x15:90

Number of peaks found: 0 Corr. Area 1: 60.6
 Noise: 0.1

Peak table for sample 9 : 2005 OKJ016 8x15:90

Peak	Size [bp]	Conc. [pg/μl]	Molarity [pmol/l]	Observations
1	35	125.00	5,411.3	Lower Marker
2	10,380	75.00	10.9	Upper Marker

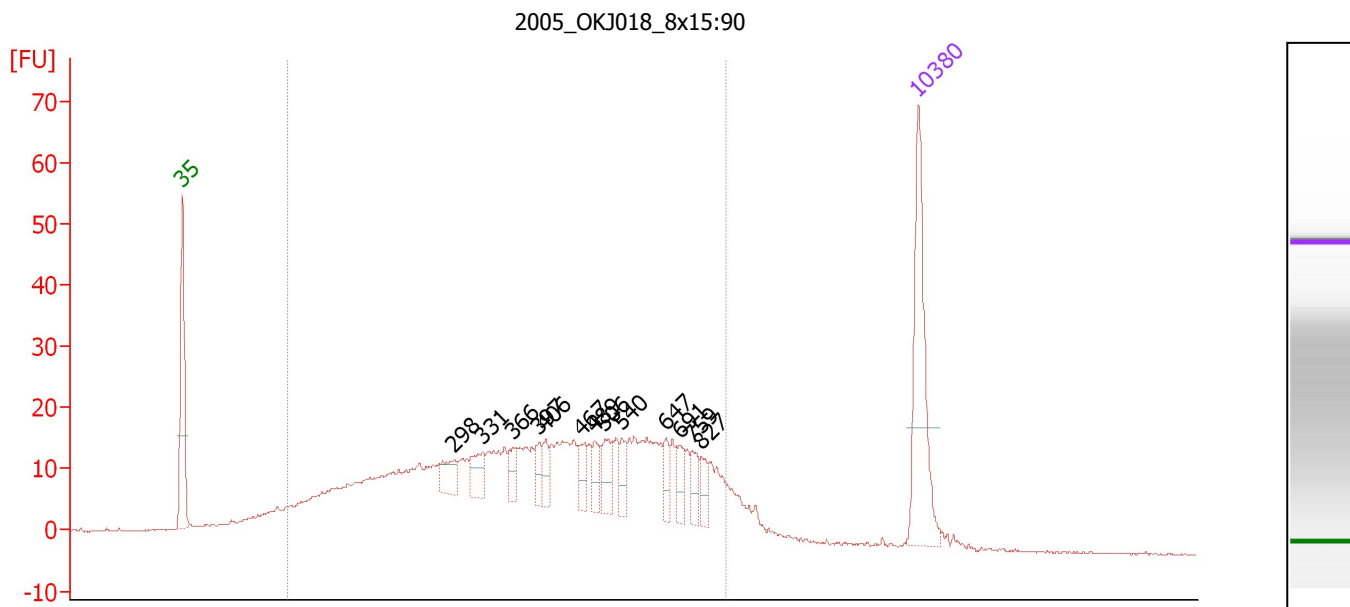
Region table for sample 9 : 2005 OKJ016 8x15:90

From [bp]	To [bp]	Average Size [bp]	Molarity [pmol/l]	Conc. [pg/μl]	Corr. Area	% of Total	Size distribution in CV [%]	Color
308	1,000	554	192.1	61.62	60.6	59	31.5	Blue

Assay Class: High Sensitivity DNA Assay
 Data Path: C:\...ents and Settings\Bioanalyzer\2012-08-07\2012-08-07_007.xad

Created: 8/7/2012 3:14:12 PM
 Modified: 8/7/2012 3:58:27 PM

Electropherogram Summary Continued ...



Overall Results for sample 10 : 2005_OKJ018_8x15:90

Number of peaks found: 13 Corr. Area 1: 704.5
 Noise: 0.1

Peak table for sample 10 : 2005_OKJ018_8x15:90

Peak	Size [bp]	Conc. [pg/μl]	Molarity [pmol/l]	Observations
1	35	125.00	5,411.3	Lower Marker
2	298	21.29	108.3	
3	331	22.40	102.6	
4	366	14.31	59.3	
5	397	12.37	47.2	
6	406	12.69	47.3	
7	467	16.71	54.3	
8	489	14.03	43.5	
9	506	19.70	59.0	
10	540	13.27	37.2	
11	647	12.92	30.2	
12	691	14.37	31.5	
13	759	14.70	29.4	
14	827	10.94	20.0	
15	10,380	75.00	10.9	Upper Marker

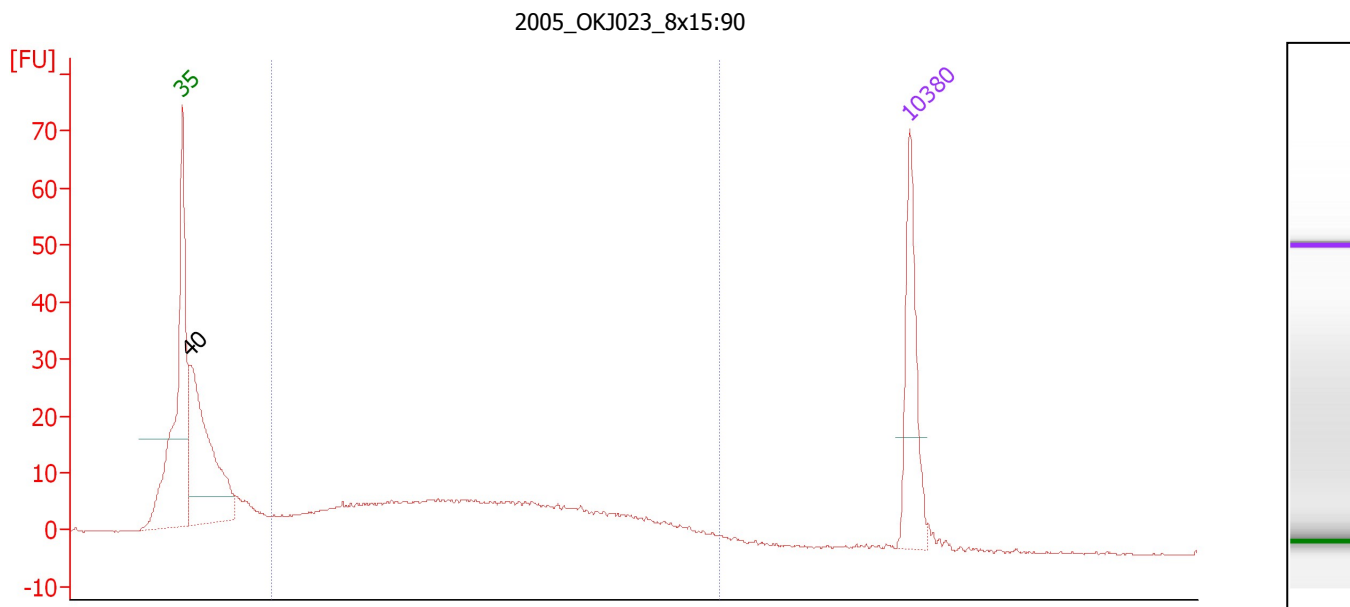
Region table for sample 10 : 2005_OKJ018_8x15:90

From [bp]	To [bp]	Average Size [bp]	Molarity [pmol/l]	Conc. [pg/μl]	Corr. Area	% of Total	Size distribution in CV [%]	Color
125	1,000	439	5,290.2	1,100.27	704.5	89	44.4	Blue

Assay Class: High Sensitivity DNA Assay
 Data Path: C:\...ents and Settings\Bioanalyzer\2012-08-07\2012-08-07_007.xad

Created: 8/7/2012 3:14:12 PM
 Modified: 8/7/2012 3:58:27 PM

Electropherogram Summary Continued ...



Overall Results for sample 11 : 2005_OKJ023_8x15:90

Number of peaks found: 1 Corr. Area 1: 316.4
 Noise: 0.1

Peak table for sample 11 : 2005_OKJ023_8x15:90

Peak	Size [bp]	Conc. [pg/μl]	Molarity [pmol/l]	Observations
1	35	125.00	5,411.3	Lower Marker
2	40	316.75	11,980.9	
3	10,380	75.00	10.9	Upper Marker

Region table for sample 11 : 2005_OKJ023_8x15:90

From [bp]	To [bp]	Average Size [bp]	Molarity [pmol/l]	Conc. [pg/μl]	Corr. Area	% of Total	Size distribution in CV [%]	Color
109	1,000	363	2,917.3	498.61	316.4	60	46.9	Blue

Assay Class: High Sensitivity DNA Assay
Data Path: C:\...ents and Settings\Bioanalyzer\2012-08-07\2012-08-07_007.xad

Created: 8/7/2012 3:14:12 PM
Modified: 8/7/2012 3:58:27 PM

Gel Image

