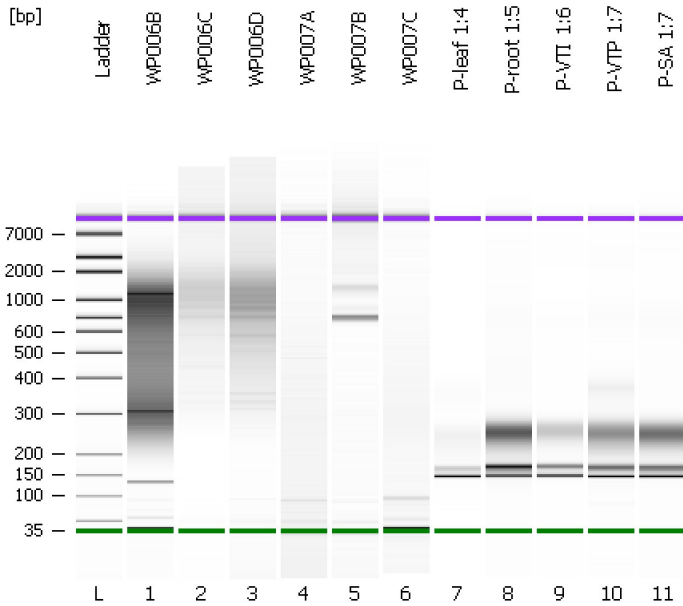


Assay Class: High Sensitivity DNA Assay
Data Path: C:\...ents and Settings\Bioanalyzer\2012-08-07\2012-08-07_008.xad

Created: 8/7/2012 4:29:36 PM
Modified: 8/7/2012 5:20:21 PM

Electrophoresis File Run Summary



Instrument Information:

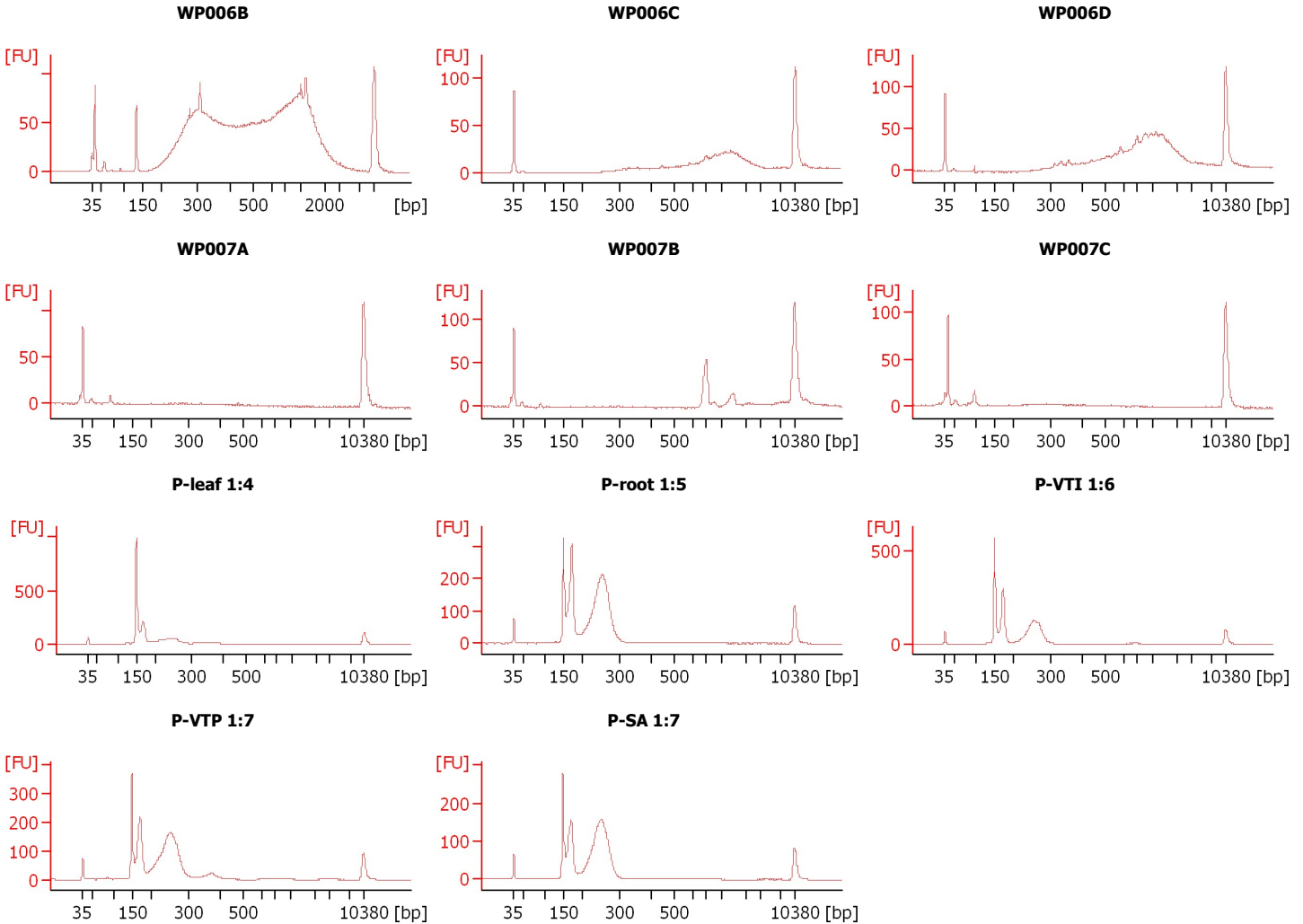
Instrument Name: DE13701086 Firmware: C.01.069
Serial#: DE13701086 Type: G2938B

Assay Information:

Assay Origin Path: C:\Program Files\Agilent\2100 bioanalyzer\2100 expert\assays\dsDNA\High Sensitivity DNA.xsy
Assay Class: High Sensitivity DNA Assay
Version: 1.03
Assay Comments: Copyright © 2003-2010 Agilent Technologies

Chip Information:

Chip Lot #:
Reagent Kit Lot #:
Chip Comments:



Assay Class: High Sensitivity DNA Assay
 Data Path: C:\...ents and Settings\Bioanalyzer\2012-08-07\2012-08-07_008.xad

Created: 8/7/2012 4:29:36 PM
 Modified: 8/7/2012 5:20:21 PM

Electrophoresis File Run Summary (Chip Summary)

Sample Name	Sample Comment	Rest. Digest	Status	Observation	Result Label	Result Color
WP006B		<input type="checkbox"/>	✓			
WP006C		<input type="checkbox"/>	✓			
WP006D		<input type="checkbox"/>	✓			
WP007A		<input type="checkbox"/>	✓			
WP007B		<input type="checkbox"/>	✓			
WP007C		<input type="checkbox"/>	✓			
P-leaf 1:4		<input type="checkbox"/>	✓			
P-root 1:5		<input type="checkbox"/>	✓			
P-VTI 1:6		<input type="checkbox"/>	✓			
P-VTP 1:7		<input type="checkbox"/>	✓			
P-SA 1:7		<input type="checkbox"/>	✓			
Ladder		<input type="checkbox"/>	✓			

Chip Lot #

Reagent Kit Lot #

Chip Comments :

Assay Class: High Sensitivity DNA Assay
Data Path: C:\...ents and Settings\Bioanalyzer\2012-08-07\2012-08-07_008.xad

Created: 8/7/2012 4:29:36 PM
Modified: 8/7/2012 5:20:21 PM

Electrophoresis Assay Details

General Analysis Settings

Number of Available Sample and Ladder Wells (Max.) : 12
Minimum Visible Range [s] : 32
Maximum Visible Range [s] : 138
Start Analysis Time Range [s] : 33
End Analysis Time Range [s] : 137.5
Ladder Concentration [pg/ μ l] : 1950
Uses Standard Area for Ladder Fragments
Lower Marker Concentration [pg/ μ l] : 125
Upper Marker Concentration [pg/ μ l] : 75
Used Upper Marker for Quantitation
Standard Curve Fit is Point to Point
Show Data Aligned to Lower and Upper Marker

Integrator Settings

Integration Start Time [s] : 33.05
Integration End Time [s] : 137
Slope Threshold : 0.8
Height Threshold [FU] : 5
Area Threshold : 0.1
Width Threshold [s] : 0.6
Baseline Plateau [s] : 0.5

Filter Settings

Filter Width [s] : 0.5
Polynomial Order : 4

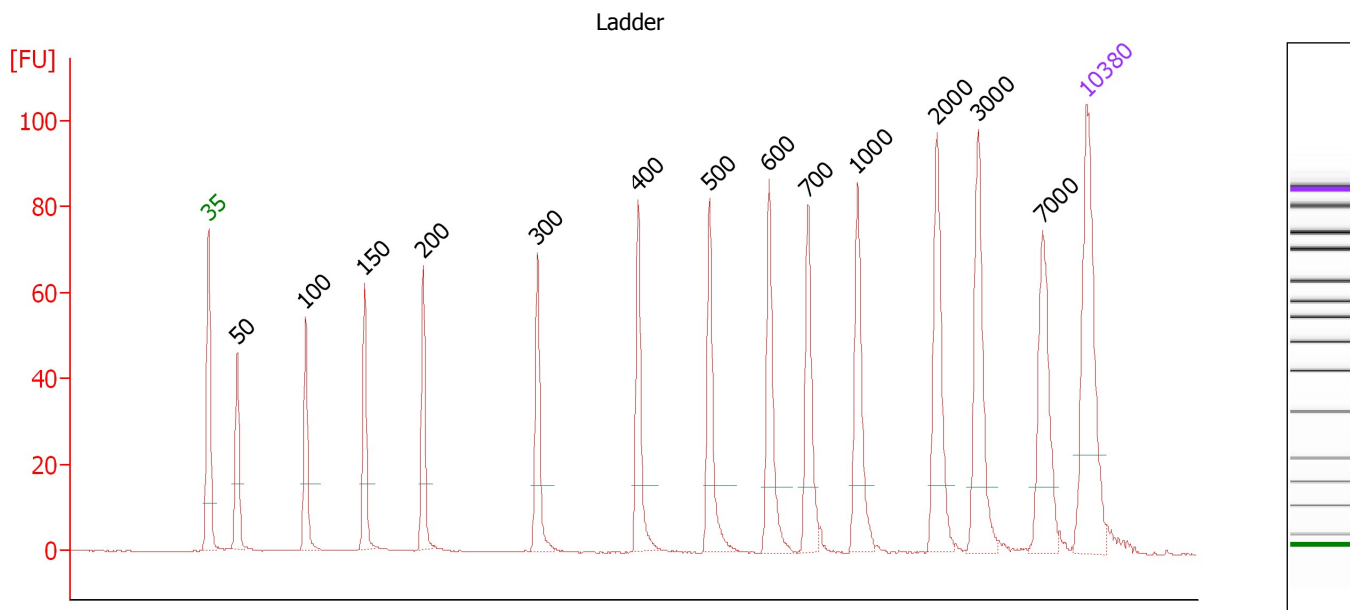
Ladder

Ladder Peak	Size	Area
1	35	160
2	50	210
3	100	208
4	150	221
5	200	242
6	300	270
7	400	305
8	500	306
9	600	336
10	700	321
11	1000	366
12	2000	413
13	3000	411
14	7000	400
15	10380	214

Assay Class: High Sensitivity DNA Assay
 Data Path: C:\...ents and Settings\Bioanalyzer\2012-08-07\2012-08-07_008.xad

Created: 8/7/2012 4:29:36 PM
 Modified: 8/7/2012 5:20:21 PM

Electropherogram Summary



Overall Results for Ladder

Noise: 0.1

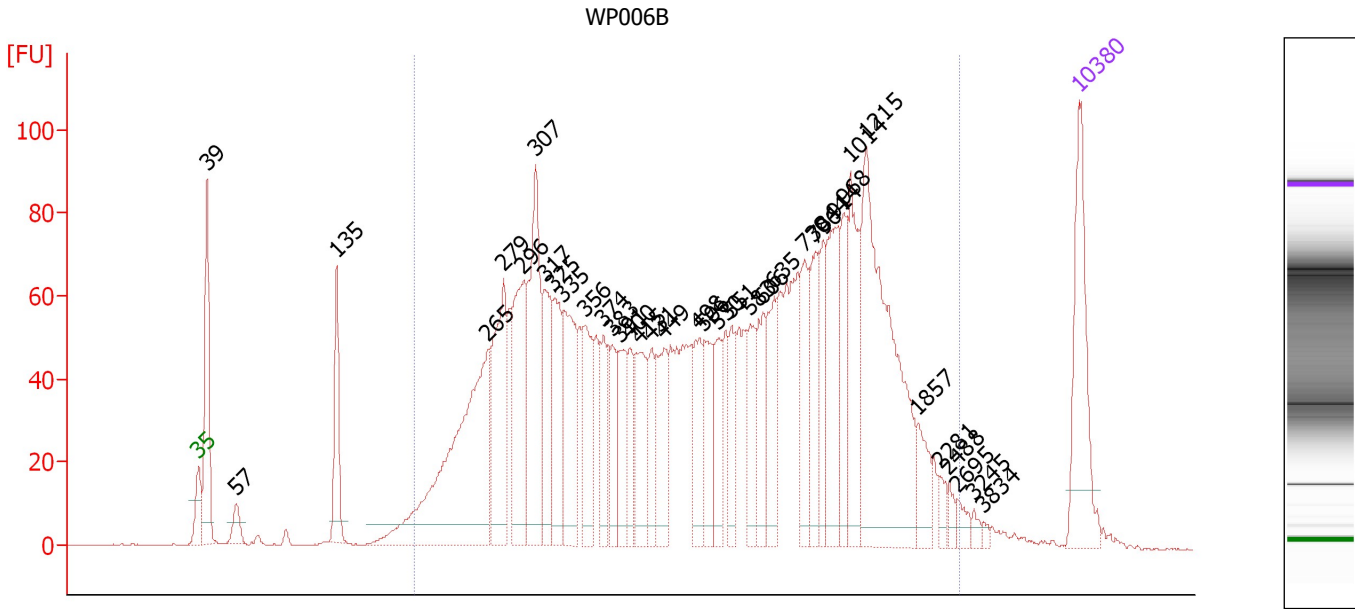
Peak table for Ladder

Peak	Size [bp]	Conc. [pg/μl]	Molarity [pmol/l]	Observations
1	35	125.00	5,411.3	Lower Marker
2	50	150.00	4,545.5	Ladder Peak
3	100	150.00	2,272.7	Ladder Peak
4	150	150.00	1,515.2	Ladder Peak
5	200	150.00	1,136.4	Ladder Peak
6	300	150.00	757.6	Ladder Peak
7	400	150.00	568.2	Ladder Peak
8	500	150.00	454.5	Ladder Peak
9	600	150.00	378.8	Ladder Peak
10	700	150.00	324.7	Ladder Peak
11	1,000	150.00	227.3	Ladder Peak
12	2,000	150.00	113.6	Ladder Peak
13	3,000	150.00	75.8	Ladder Peak
14	7,000	150.00	32.5	Ladder Peak
15	10,380	75.00	10.9	Upper Marker

Assay Class: High Sensitivity DNA Assay
 Data Path: C:\...ents and Settings\Bioanalyzer\2012-08-07\2012-08-07_008.xad

Created: 8/7/2012 4:29:36 PM
 Modified: 8/7/2012 5:20:21 PM

Electropherogram Summary Continued ...



Overall Results for sample 1 : WP006B

Number of peaks found: 38 Corr. Area 1: 2,861.5
 Noise: 0.2

Peak table for sample 1 : WP006B

Peak	Size [bp]	Conc. [pg/μl]	Molarity [pmol/l]	Observations
1	35	125.00	5,411.3	Lower Marker
2	39	136.48	5,243.8	
3	57	20.89	559.9	
4	135	73.60	827.8	
5	265	304.91	1,742.5	
6	279	131.38	714.7	
7	296	123.70	634.0	
8	307	151.71	748.4	
9	317	78.88	377.5	
10	325	74.35	346.6	
11	335	100.47	455.0	
12	356	70.65	300.5	
13	374	44.01	178.5	
14	383	39.06	154.7	
15	391	45.88	177.8	
16	400	37.07	140.4	
17	415	59.15	216.0	
18	431	38.06	133.7	
19	449	57.87	195.2	
20	498	48.61	147.8	
21	506	48.05	143.9	
22	530	41.80	119.5	
23	551	32.34	88.9	
24	583	43.37	112.6	
25	606	41.34	103.3	
26	635	51.57	123.1	

Assay Class: High Sensitivity DNA Assay
 Data Path: C:\...ents and Settings\Bioanalyzer\2012-08-07\2012-08-07_008.xad

Created: 8/7/2012 4:29:36 PM
 Modified: 8/7/2012 5:20:21 PM

Electropherogram Summary Continued ...

... Peak table for sample 1 : WP006B

Peak	Size [bp]	Conc. [pg/ μ l]	Molarity [pmol/l]	Observations
27	730	53.67	111.5	
28	796	53.14	101.1	
29	844	41.73	74.9	
30	914	75.07	124.4	
31	968	45.45	71.1	
32	1,014	72.64	108.6	
33	1,215	222.84	278.0	
34	1,857	23.00	18.8	
35	2,281	7.96	5.3	
36	2,488	5.59	3.4	
37	2,695	7.48	4.2	
38	3,245	4.23	2.0	
39	3,834	2.84	1.1	
40	▶ 10,380	75.00	10.9	Upper Marker

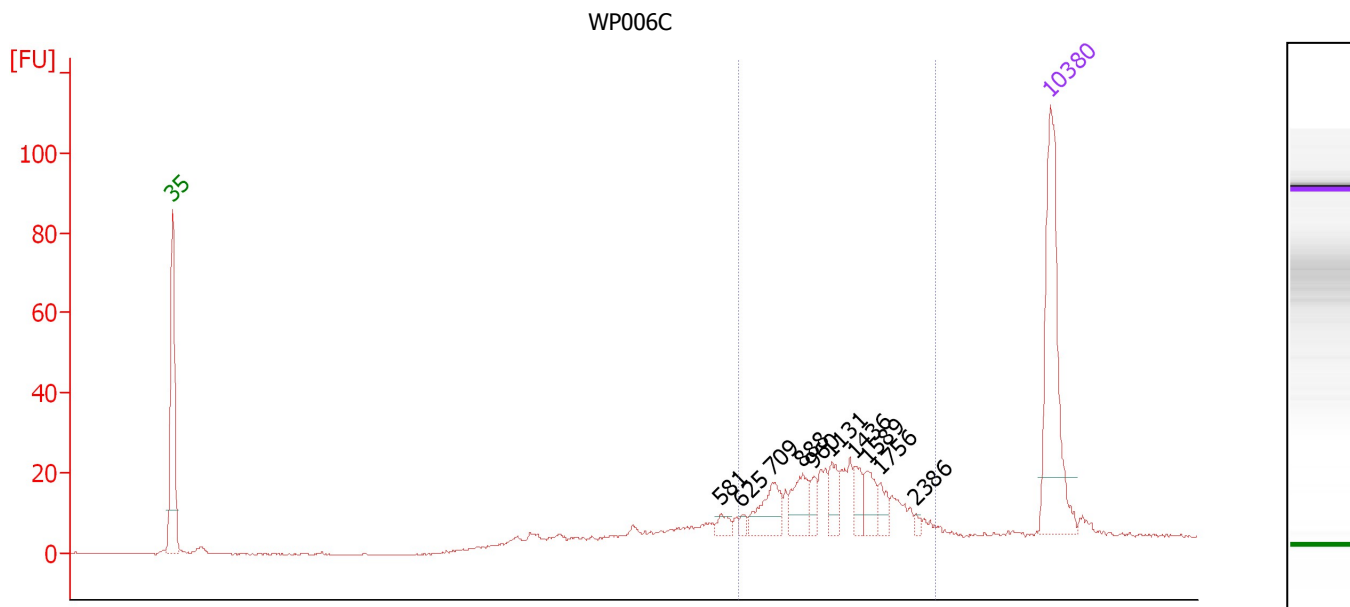
Region table for sample 1 : WP006B

From [bp]	To [bp]	Average Size [bp]	Molarity [pmol/l]	Conc. [pg/ μ l]	Corr. Area	% of Total	Size distribution in CV [%]	Color
200	2,755	672	9,692.7	2,712.46	2,861.5	92	68.0	

Assay Class: High Sensitivity DNA Assay
 Data Path: C:\...ents and Settings\Bioanalyzer\2012-08-07\2012-08-07_008.xad

Created: 8/7/2012 4:29:36 PM
 Modified: 8/7/2012 5:20:21 PM

Electropherogram Summary Continued ...



Overall Results for sample 2 : WP006C

Number of peaks found: 10 Corr. Area 1: 214.7
 Noise: 0.2

Peak table for sample 2 : WP006C

Peak	Size [bp]	Conc. [pg/μl]	Molarity [pmol/l]	Observations
1	35	125.00	5,411.3	Lower Marker
2	581	6.45	16.8	
3	625	3.35	8.1	
4	709	25.58	54.6	
5	888	20.42	34.9	
6	960	7.74	12.2	
7	1,131	12.04	16.1	
8	1,436	10.45	11.0	
9	1,589	13.02	12.4	
10	1,756	7.81	6.7	
11	2,386	1.88	1.2	
12	10,380	75.00	10.9	Upper Marker

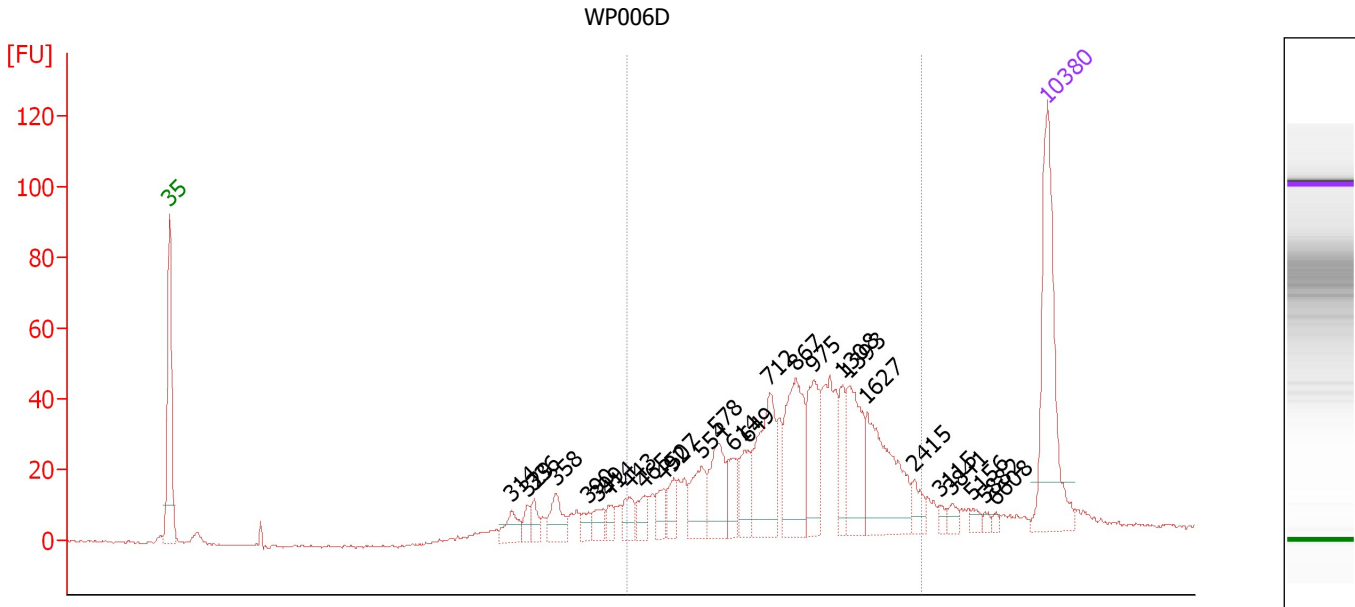
Region table for sample 2 : WP006C

From [bp]	To [bp]	Average Size [bp]	Molarity [pmol/l]	Conc. [pg/μl]	Corr. Area	% of Total	Size distribution in CV [%]	Color
616	2,879	1,270	239.9	169.72	214.7	70	40.0	Blue

Assay Class: High Sensitivity DNA Assay
 Data Path: C:\...ents and Settings\Bioanalyzer\2012-08-07\2012-08-07_008.xad

Created: 8/7/2012 4:29:36 PM
 Modified: 8/7/2012 5:20:21 PM

Electropherogram Summary Continued ...



Overall Results for sample 3 : WP006D

Number of peaks found: 27 Corr. Area 1: 653.8
 Noise: 0.4

Peak table for sample 3 : WP006D

Peak	Size [bp]	Conc. [pg/μl]	Molarity [pmol/l]	Observations
1	35	125.00	5,411.3	Lower Marker
2	314	15.66	75.7	
3	329	7.78	35.8	
4	336	10.19	46.0	
5	358	19.94	84.5	
6	390	7.22	28.0	
7	399	10.47	39.8	
8	414	7.63	27.9	
9	443	12.58	43.0	
10	465	11.13	36.3	
11	492	12.05	37.1	
12	507	12.35	36.9	
13	554	25.53	69.9	
14	578	34.29	89.8	
15	614	15.95	39.3	
16	649	21.86	51.0	
17	712	57.91	123.2	
18	867	60.85	106.3	
19	975	35.92	55.8	
20	1,308	18.41	21.3	
21	1,393	40.86	44.4	
22	1,627	58.73	54.7	
23	2,415	9.02	5.7	
24	3,115	3.04	1.5	
25	3,841	4.64	1.8	
26	5,156	3.81	1.1	

Assay Class: High Sensitivity DNA Assay
 Data Path: C:\...ents and Settings\Bioanalyzer\2012-08-07\2012-08-07_008.xad

Created: 8/7/2012 4:29:36 PM
 Modified: 8/7/2012 5:20:21 PM

Electropherogram Summary Continued ...

... Peak table for sample 3 : WP006D

Peak	Size [bp]	Conc. [pg/ μ l]	Molarity [pmol/l]	Observations
27	5,882	2.24	0.6	
28	6,608	2.17	0.5	
29	10,380	75.00	10.9	Upper Marker

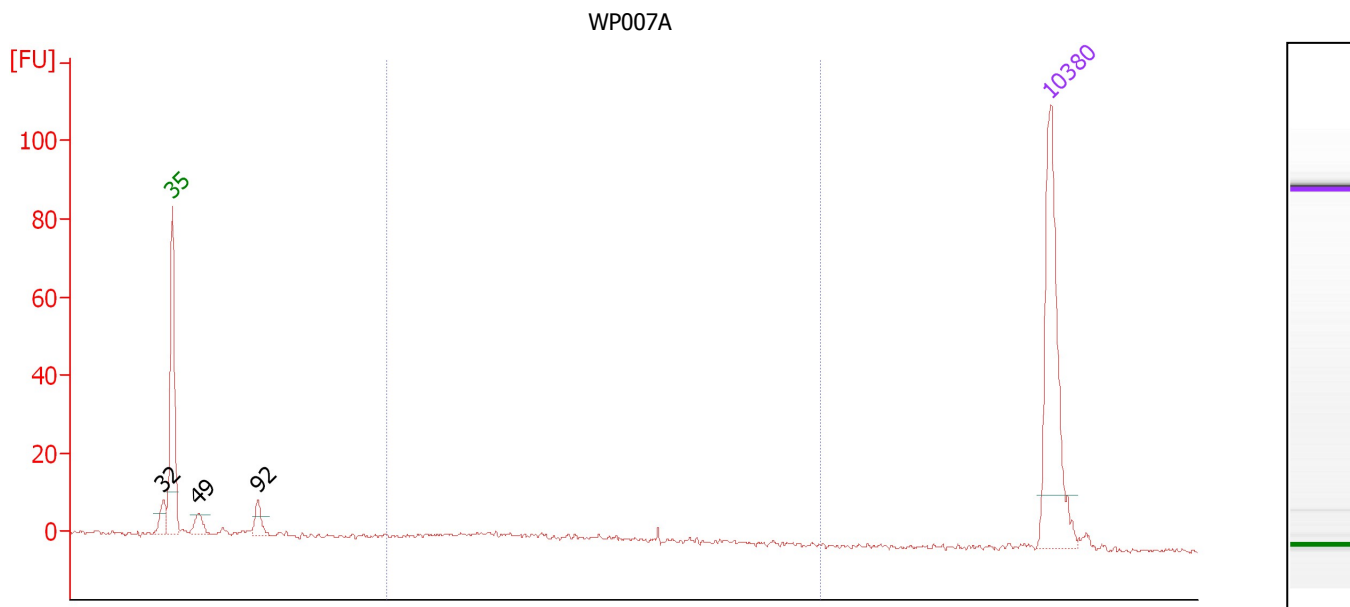
Region table for sample 3 : WP006D

From [bp]	To [bp]	Average Size [bp]	Molarity [pmol/l]	Conc. [pg/ μ l]	Corr. Area	% of Total	Size distribution in CV [%]	Color
440	2,596	1,043	874.3	469.74	653.8	82	47.1	

Assay Class: High Sensitivity DNA Assay
 Data Path: C:\...ents and Settings\Bioanalyzer\2012-08-07\2012-08-07_008.xad

Created: 8/7/2012 4:29:36 PM
 Modified: 8/7/2012 5:20:21 PM

Electropherogram Summary Continued ...



Overall Results for sample 4 : WP007A

Number of peaks found: 3 Corr. Area 1: 22.5
 Noise: 0.6

Peak table for sample 4 : WP007A

Peak	Size [bp]	Conc. [pg/μl]	Molarity [pmol/l]	Observations
1	32	0.00	0.0	
2	35	125.00	5,411.3	Lower Marker
3	49	12.83	399.0	
4	92	14.22	235.4	
5	10,380	75.00	10.9	Upper Marker

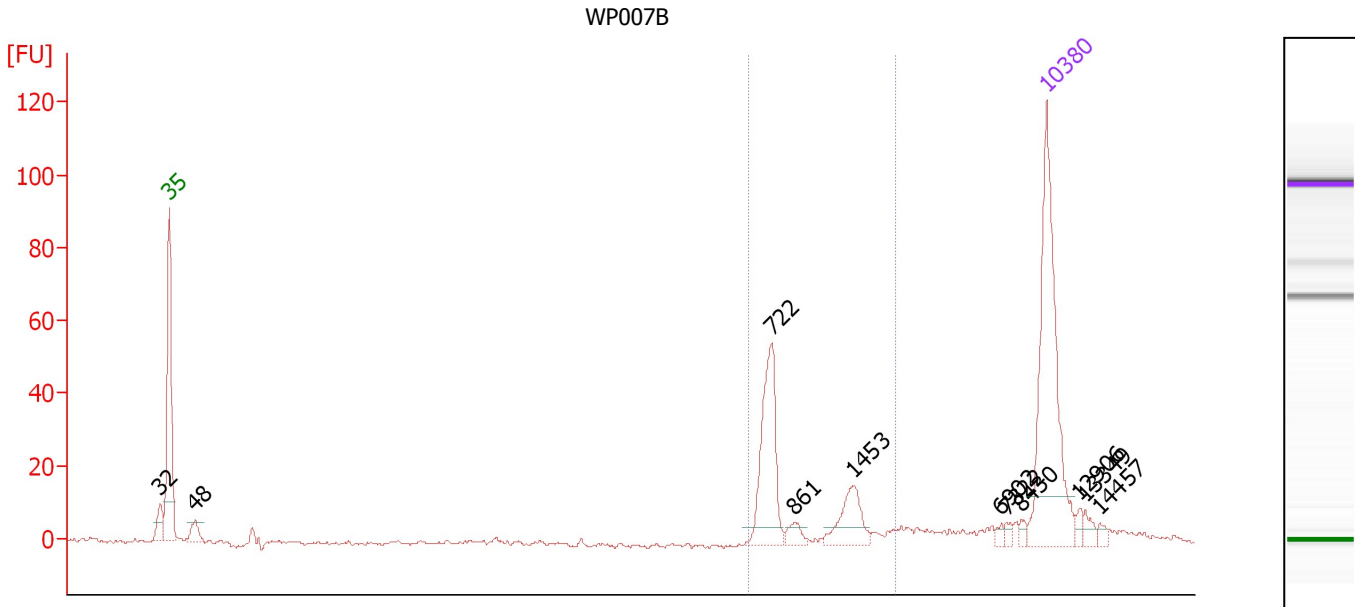
Region table for sample 4 : WP007A

From [bp]	To [bp]	Average Size [bp]	Molarity [pmol/l]	Conc. [pg/μl]	Corr. Area	% of Total	Size distribution in CV [%]	Color
200	1,000	352	103.7	21.82	22.5	36	29.4	■

Assay Class: High Sensitivity DNA Assay
 Data Path: C:\...ents and Settings\Bioanalyzer\2012-08-07\2012-08-07_008.xad

Created: 8/7/2012 4:29:36 PM
 Modified: 8/7/2012 5:20:21 PM

Electropherogram Summary Continued ...



Overall Results for sample 5 : WP007B

Number of peaks found: 11 Corr. Area 1: 130.4
 Noise: 0.5

Peak table for sample 5 : WP007B

Peak	Size [bp]	Conc. [pg/μl]	Molarity [pmol/l]	Observations
1	32	0.00	0.0	
2	35	125.00	5,411.3	Lower Marker
3	48	9.42	295.4	
4	722	52.15	109.4	
5	861	5.40	9.5	
6	1,453	18.17	18.9	
7	6,902	1.97	0.4	
8	7,322	1.97	0.4	
9	8,430	2.20	0.4	
10	10,380	75.00	10.9	Upper Marker
11	12,906	0.00	0.0	
12	13,349	0.00	0.0	
13	14,457	0.00	0.0	

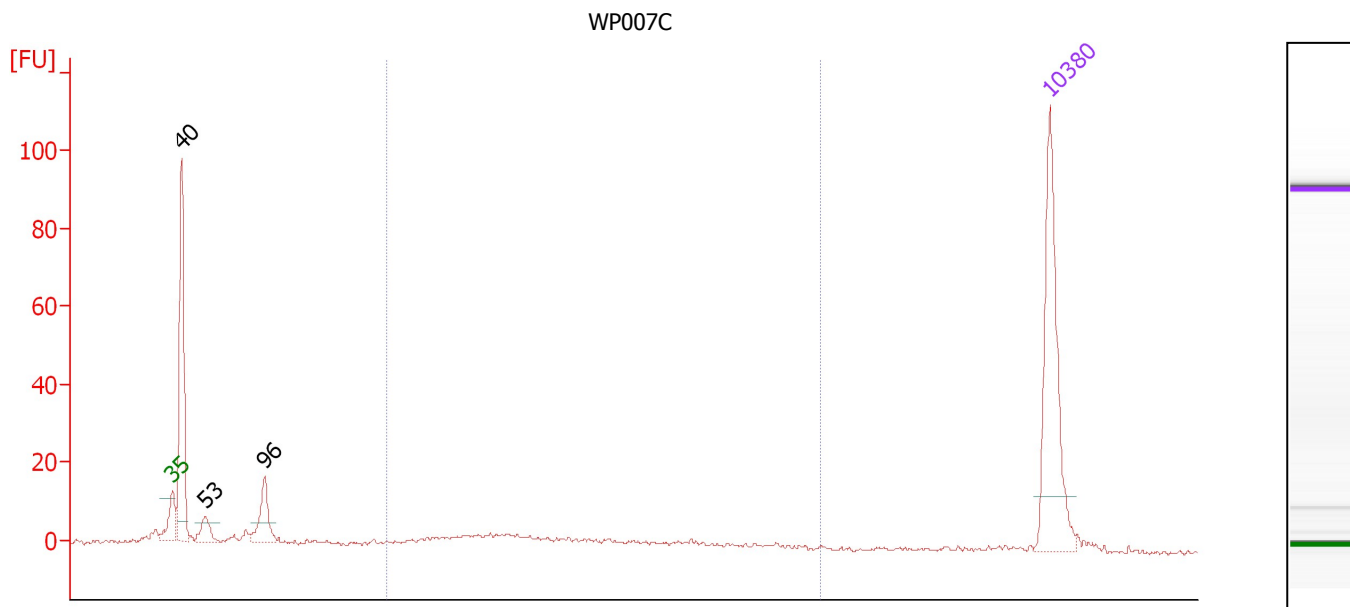
Region table for sample 5 : WP007B

From [bp]	To [bp]	Average Size [bp]	Molarity [pmol/l]	Conc. [pg/μl]	Corr. Area	% of Total	Size distribution in CV [%]	Color
648	1,986	969	142.4	79.06	130.4	53	38.3	Blue

Assay Class: High Sensitivity DNA Assay
 Data Path: C:\...ents and Settings\Bioanalyzer\2012-08-07\2012-08-07_008.xad

Created: 8/7/2012 4:29:36 PM
 Modified: 8/7/2012 5:20:21 PM

Electropherogram Summary Continued ...



Overall Results for sample 6 : WP007C

Number of peaks found: 3 Corr. Area 1: 64.5
 Noise: 0.5

Peak table for sample 6 : WP007C

Peak	Size [bp]	Conc. [pg/μl]	Molarity [pmol/l]	Observations
1	35	125.00	5,411.3	Lower Marker
2	40	141.08	5,364.8	
3	53	17.37	495.2	
4	96	35.93	565.8	
5	10,380	75.00	10.9	Upper Marker

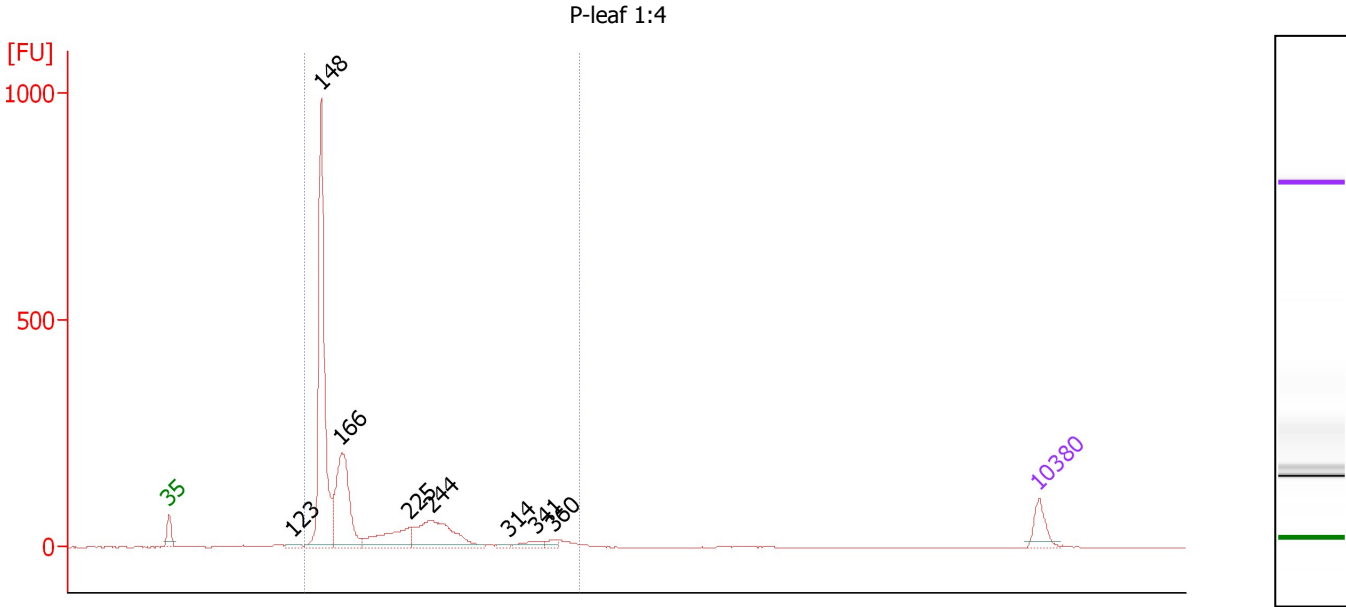
Region table for sample 6 : WP007C

From [bp]	To [bp]	Average Size [bp]	Molarity [pmol/l]	Conc. [pg/μl]	Corr. Area	% of Total	Size distribution in CV [%]	Color
200	1,000	391	280.7	61.86	64.5	27	37.3	Blue

Assay Class: High Sensitivity DNA Assay
 Data Path: C:\...ents and Settings\Bioanalyzer\2012-08-07\2012-08-07_008.xad

Created: 8/7/2012 4:29:36 PM
 Modified: 8/7/2012 5:20:21 PM

Electropherogram Summary Continued ...



Overall Results for sample 7 : P-leaf 1:4

Number of peaks found: 8 Corr. Area 1: 2,178.5
 Noise: 0.6

Peak table for sample 7 : P-leaf 1:4

Peak	Size [bp]	Conc. [pg/μl]	Molarity [pmol/l]	Observations
1	35	125.00	5,411.3	Lower Marker
2	123	20.53	252.3	
3	148	1,394.74	14,265.2	
4	166	649.00	5,927.8	
5	225	252.45	1,702.7	
6	244	397.73	2,467.1	
7	314	11.11	53.6	
8	341	43.58	193.4	
9	360	25.17	106.0	
10	10,380	75.00	10.9	Upper Marker

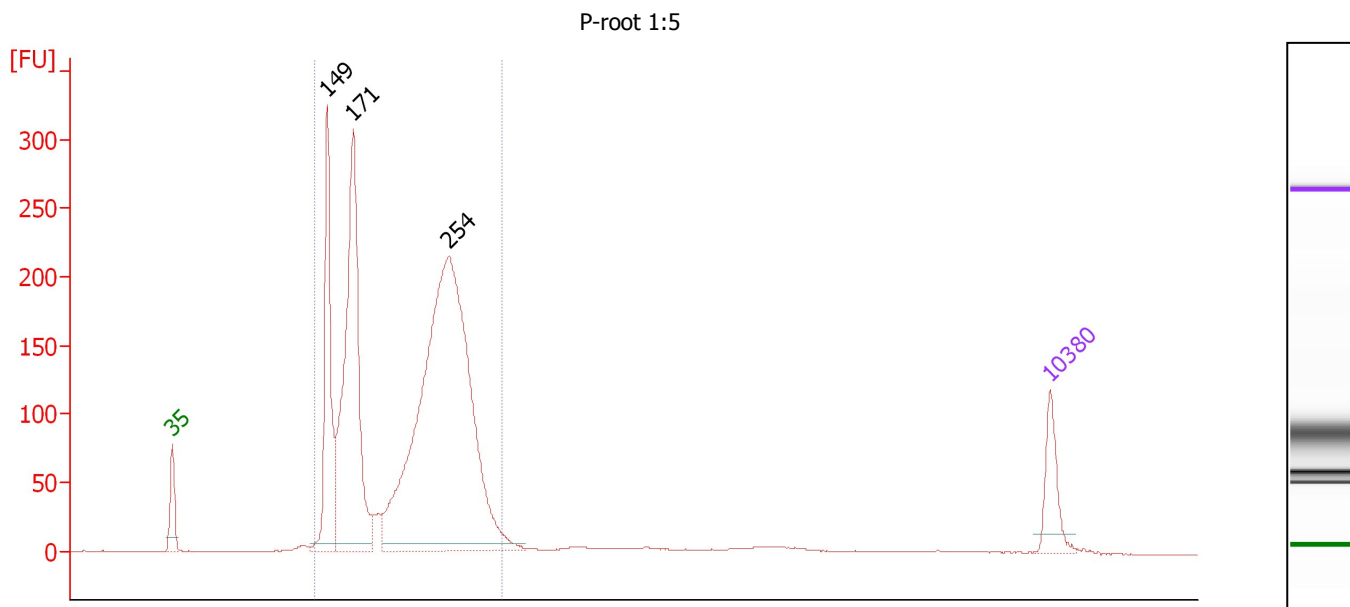
Region table for sample 7 : P-leaf 1:4

From [bp]	To [bp]	Average Size [bp]	Molarity [pmol/l]	Conc. [pg/μl]	Corr. Area	% of Total	Size distribution in CV [%]	Color
133	385	189	24,896.6	2,826.55	2,178.5	95	29.9	Blue

Assay Class: High Sensitivity DNA Assay
 Data Path: C:\...ents and Settings\Bioanalyzer\2012-08-07\2012-08-07_008.xad

Created: 8/7/2012 4:29:36 PM
 Modified: 8/7/2012 5:20:21 PM

Electropherogram Summary Continued ...



Overall Results for sample 8 : P-root 1:5

Number of peaks found: 3 Corr. Area 1: 2,712.2
 Noise: 0.3

Peak table for sample 8 : P-root 1:5

Peak	Size [bp]	Conc. [pg/μl]	Molarity [pmol/l]	Observations
1	35	125.00	5,411.3	Lower Marker
2	149	444.63	4,509.5	
3	171	883.62	7,811.0	
4	254	1,781.31	10,613.8	
5	10,380	75.00	10.9	Upper Marker

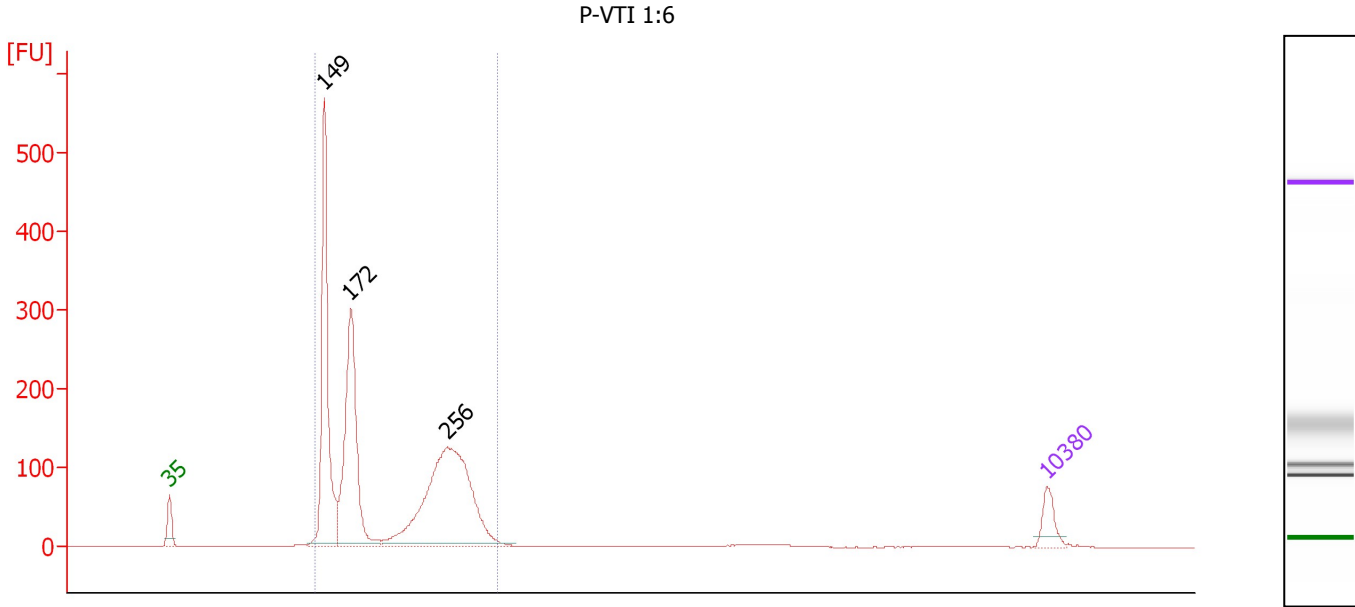
Region table for sample 8 : P-root 1:5

From [bp]	To [bp]	Average Size [bp]	Molarity [pmol/l]	Conc. [pg/μl]	Corr. Area	% of Total	Size distribution in CV [%]	Color
138	301	218	23,825.2	3,198.71	2,712.2	93	20.7	Blue

Assay Class: High Sensitivity DNA Assay
 Data Path: C:\...ents and Settings\Bioanalyzer\2012-08-07\2012-08-07_008.xad

Created: 8/7/2012 4:29:36 PM
 Modified: 8/7/2012 5:20:21 PM

Electropherogram Summary Continued ...



Overall Results for sample 9 : P-VTI 1:6

Number of peaks found: 3 Corr. Area 1: 2,059.6
 Noise: 0.2

Peak table for sample 9 : P-VTI 1:6

Peak	Size [bp]	Conc. [pg/μl]	Molarity [pmol/l]	Observations
1	35	125.00	5,411.3	Lower Marker
2	149	1,192.56	12,097.5	
3	172	1,095.78	9,649.7	
4	256	1,433.67	8,499.1	
5	10,380	75.00	10.9	Upper Marker

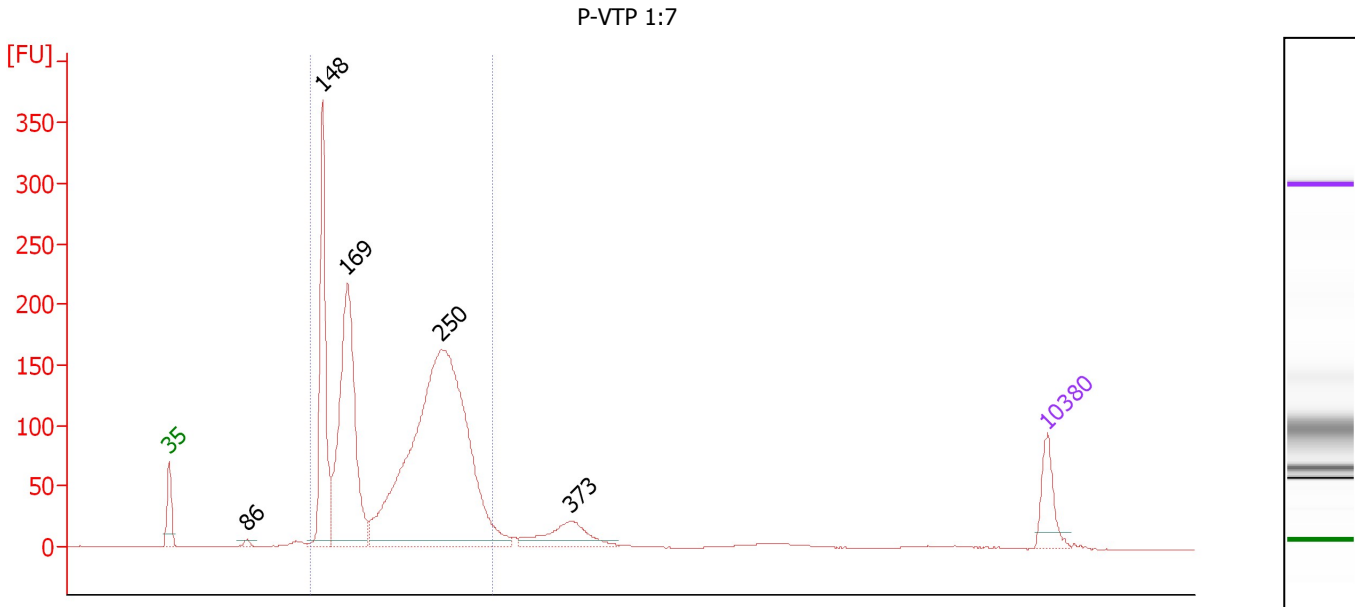
Region table for sample 9 : P-VTI 1:6

From [bp]	To [bp]	Average Size [bp]	Molarity [pmol/l]	Conc. [pg/μl]	Corr. Area	% of Total	Size distribution in CV [%]	Color
141	300	204	30,096.6	3,727.03	2,059.6	95	24.0	Blue

Assay Class: High Sensitivity DNA Assay
 Data Path: C:\...ents and Settings\Bioanalyzer\2012-08-07\2012-08-07_008.xad

Created: 8/7/2012 4:29:36 PM
 Modified: 8/7/2012 5:20:21 PM

Electropherogram Summary Continued ...



Overall Results for sample 10 : P-VTP 1:7

Number of peaks found: 5 Corr. Area 1: 2,297.7
 Noise: 0.2

Peak table for sample 10 : P-VTP 1:7

Peak	Size [bp]	Conc. [pg/μl]	Molarity [pmol/l]	Observations
1	35	125.00	5,411.3	Lower Marker
2	86	13.36	235.9	
3	148	567.61	5,816.2	
4	169	868.50	7,778.0	
5	250	1,877.38	11,369.9	
6	373	134.52	547.0	
7	10,380	75.00	10.9	Upper Marker

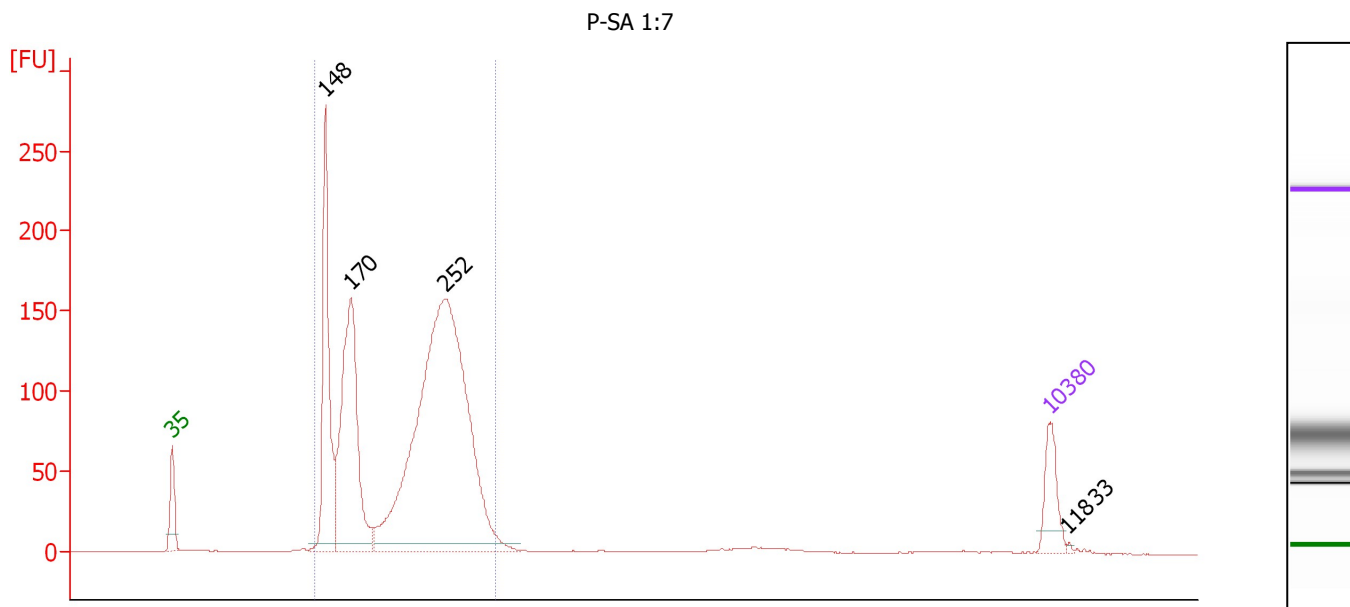
Region table for sample 10 : P-VTP 1:7

From [bp]	To [bp]	Average Size [bp]	Molarity [pmol/l]	Conc. [pg/μl]	Corr. Area	% of Total	Size distribution in CV [%]	Color
138	295	214	25,282.9	3,329.63	2,297.7	89	21.2	Blue

Assay Class: High Sensitivity DNA Assay
 Data Path: C:\...ents and Settings\Bioanalyzer\2012-08-07\2012-08-07_008.xad

Created: 8/7/2012 4:29:36 PM
 Modified: 8/7/2012 5:20:21 PM

Electropherogram Summary Continued ...



Overall Results for sample 11 : P-SA 1:7

Number of peaks found: 4 Corr. Area 1: 1,926.6
 Noise: 0.1

Peak table for sample 11 : P-SA 1:7

Peak	Size [bp]	Conc. [pg/μl]	Molarity [pmol/l]	Observations
1	35	125.00	5,411.3	Lower Marker
2	148	543.39	5,576.6	
3	170	732.74	6,545.4	
4	252	1,825.29	10,989.2	
5	10,380	75.00	10.9	Upper Marker
6	11,833	0.00	0.0	

Region table for sample 11 : P-SA 1:7

From [bp]	To [bp]	Average Size [bp]	Molarity [pmol/l]	Conc. [pg/μl]	Corr. Area	% of Total	Size distribution in CV [%]	Color
139	295	217	23,552.7	3,133.07	1,926.6	95	20.8	Blue

Assay Class: High Sensitivity DNA Assay
Data Path: C:\...ents and Settings\Bioanalyzer\2012-08-07\2012-08-07_008.xad

Created: 8/7/2012 4:29:36 PM
Modified: 8/7/2012 5:20:21 PM

Gel Image

