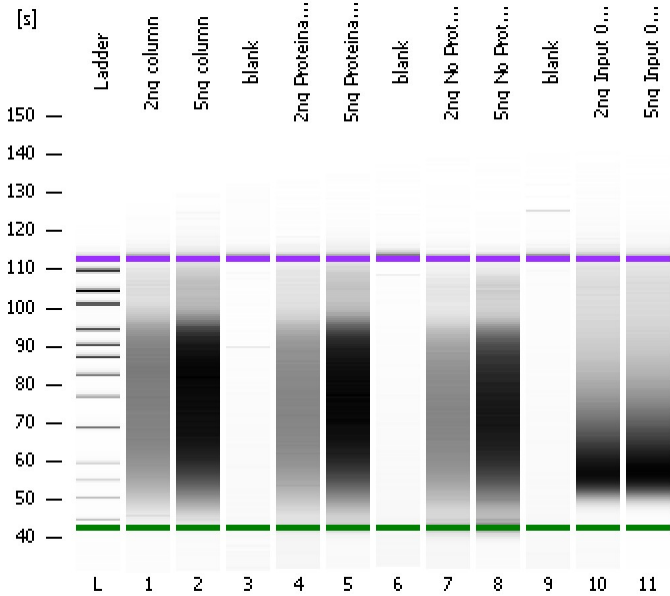


Assay Class: High Sensitivity DNA Assay
Data Path: C:\...ents and Settings\Bioanalyzer\2012-08-08\2012-08-08_002.xad

Created: 8/8/2012 10:24:33 AM
Modified: 8/8/2012 11:10:22 AM

Electrophoresis File Run Summary



Instrument Information:

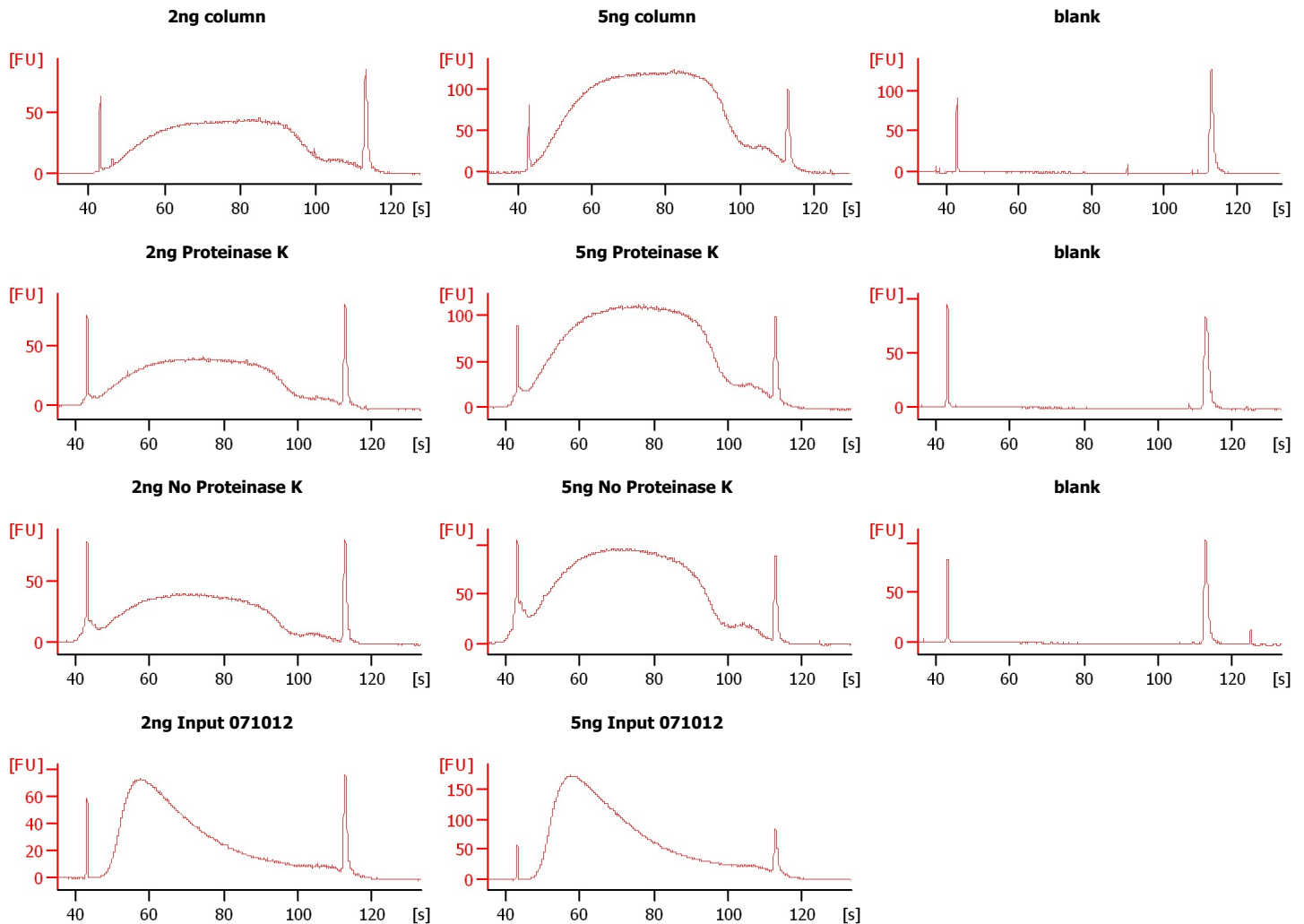
Instrument Name: DE13701086 Firmware: C.01.069
Serial#: DE13701086 Type: G2938B

Assay Information:

Assay Origin Path: C:\Program Files\Agilent\2100 bioanalyzer\2100 expert\assays\dsDNA\High Sensitivity DNA.xsy
Assay Class: High Sensitivity DNA Assay
Version: 1.03
Assay Comments: Copyright © 2003-2010 Agilent Technologies

Chip Information:

Chip Lot #:
Reagent Kit Lot #:
Chip Comments:



Assay Class: High Sensitivity DNA Assay
 Data Path: C:\...ents and Settings\Bioanalyzer\2012-08-08\2012-08-08_002.xad

Created: 8/8/2012 10:24:33 AM
 Modified: 8/8/2012 11:10:22 AM

Electrophoresis File Run Summary (Chip Summary)

Sample Name	Sample Comment	Rest. Digest	Status	Observation	Result Label	Result Color
2ng column		<input type="checkbox"/>	✓			
5ng column		<input type="checkbox"/>	✓			
blank		<input type="checkbox"/>	✓			
2ng Proteinase K		<input type="checkbox"/>	✓			
5ng Proteinase K		<input type="checkbox"/>	✓			
blank		<input type="checkbox"/>	✓			
2ng No Proteinase K		<input type="checkbox"/>	✓			
5ng No Proteinase K		<input type="checkbox"/>	✓			
blank		<input type="checkbox"/>	✓			
2ng Input 071012		<input type="checkbox"/>	✓			
5ng Input 071012		<input type="checkbox"/>	✓			
Ladder		<input type="checkbox"/>	✓			

Chip Lot #

Reagent Kit Lot #

Chip Comments :

Assay Class: High Sensitivity DNA Assay
Data Path: C:\...ents and Settings\Bioanalyzer\2012-08-08\2012-08-08_002.xad

Created: 8/8/2012 10:24:33 AM
Modified: 8/8/2012 11:10:22 AM

Electrophoresis Assay Details

General Analysis Settings

Number of Available Sample and Ladder Wells (Max.) : 12
Minimum Visible Range [s] : 32
Maximum Visible Range [s] : 138
Start Analysis Time Range [s] : 33
End Analysis Time Range [s] : 137.5
Ladder Concentration [pg/μl] : 1950
Uses Standard Area for Ladder Fragments
Lower Marker Concentration [pg/μl] : 125
Upper Marker Concentration [pg/μl] : 75
Used Upper Marker for Quantitation
Standard Curve Fit is Point to Point
Show Data Aligned to Lower and Upper Marker

Integrator Settings

Integration Start Time [s] : 33.05
Integration End Time [s] : 137
Slope Threshold : 0.8
Height Threshold [FU] : 5
Area Threshold : 0.1
Width Threshold [s] : 0.6
Baseline Plateau [s] : 0.5

Filter Settings

Filter Width [s] : 0.5
Polynomial Order : 4

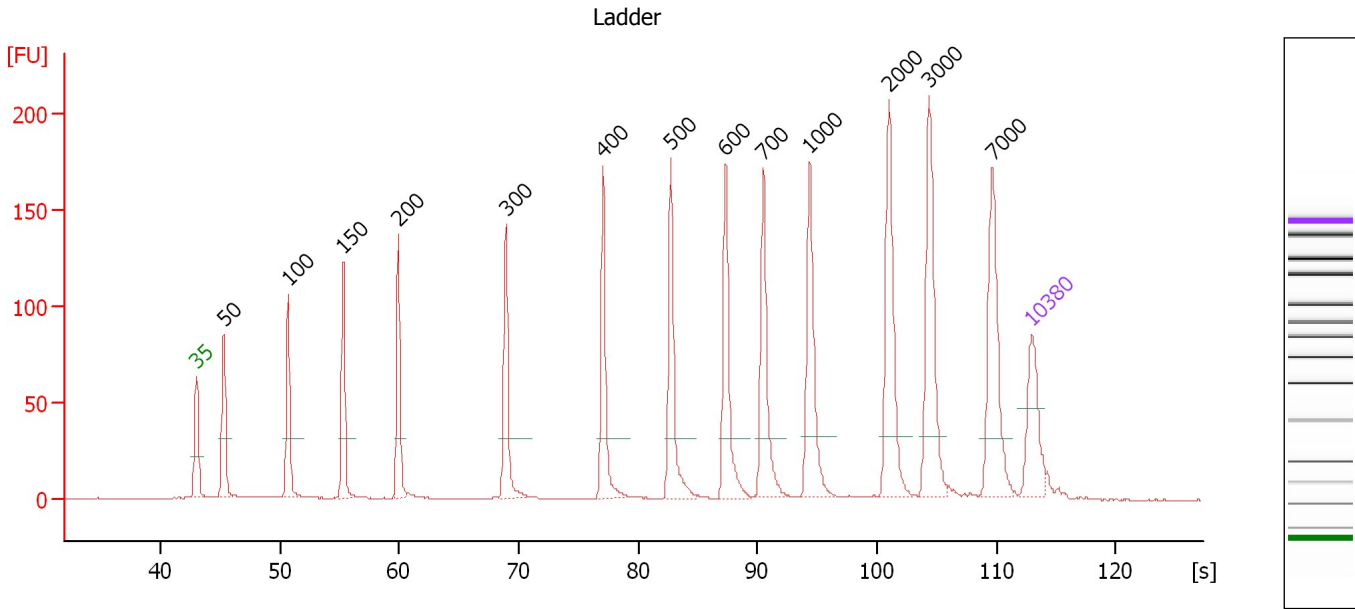
Ladder

Ladder Peak	Size	Area
1	35	160
2	50	210
3	100	208
4	150	221
5	200	242
6	300	270
7	400	305
8	500	306
9	600	336
10	700	321
11	1000	366
12	2000	413
13	3000	411
14	7000	400
15	10380	214

Assay Class: High Sensitivity DNA Assay
 Data Path: C:\...ents and Settings\Bioanalyzer\2012-08-08\2012-08-08_002.xad

Created: 8/8/2012 10:24:33 AM
 Modified: 8/8/2012 11:10:22 AM

Electropherogram Summary



Overall Results for Ladder

Noise: 0.1

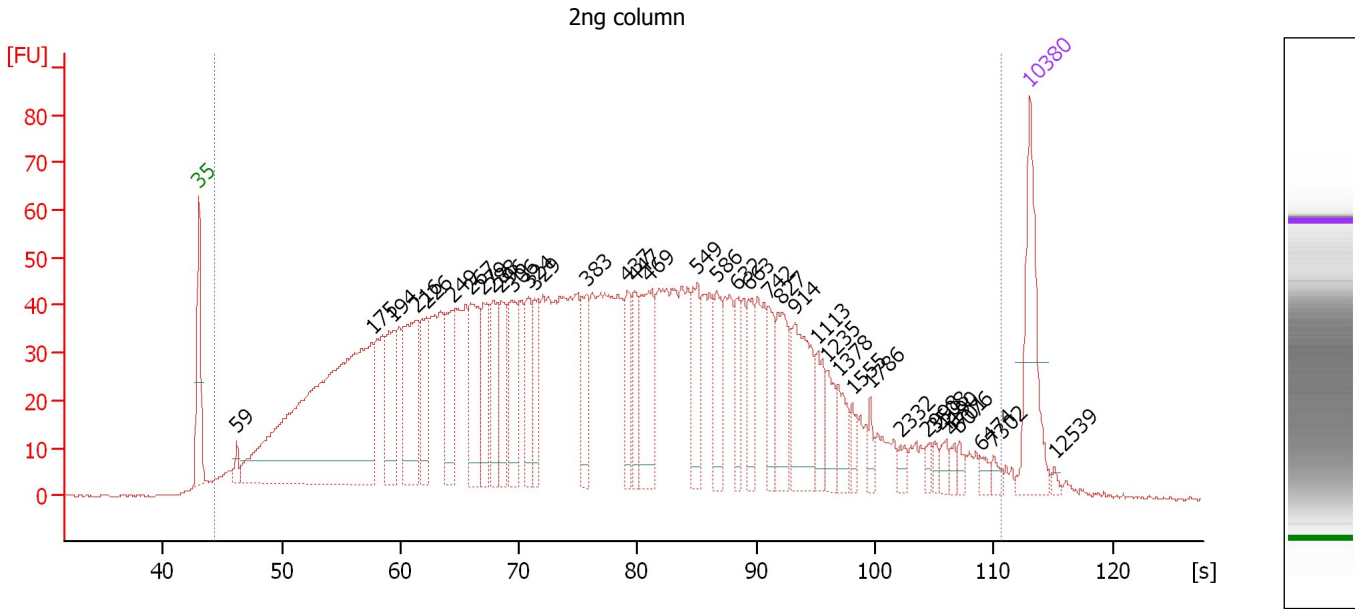
Peak table for Ladder

Peak	Size [bp]	Conc. [pg/μl]	Molarity [pmol/l]	Observations
1	35	125.00	5,411.3	Lower Marker
2	50	150.00	4,545.5	Ladder Peak
3	100	150.00	2,272.7	Ladder Peak
4	150	150.00	1,515.2	Ladder Peak
5	200	150.00	1,136.4	Ladder Peak
6	300	150.00	757.6	Ladder Peak
7	400	150.00	568.2	Ladder Peak
8	500	150.00	454.5	Ladder Peak
9	600	150.00	378.8	Ladder Peak
10	700	150.00	324.7	Ladder Peak
11	1,000	150.00	227.3	Ladder Peak
12	2,000	150.00	113.6	Ladder Peak
13	3,000	150.00	75.8	Ladder Peak
14	7,000	150.00	32.5	Ladder Peak
15	10,380	75.00	10.9	Upper Marker

Assay Class: High Sensitivity DNA Assay
 Data Path: C:\...ents and Settings\Bioanalyzer\2012-08-08\2012-08-08_002.xad

Created: 8/8/2012 10:24:33 AM
 Modified: 8/8/2012 11:10:22 AM

Electropherogram Summary Continued ...



Overall Results for sample 1 : 2ng column

Number of peaks found: 38 Corr. Area 1: 2,767.9
 Noise: 0.2

Peak table for sample 1 : 2ng column

Peak	Size [bp]	Conc. [pg/μl]	Molarity [pmol/l]	Observations
1	35	125.00	5,411.3	Lower Marker
2	59	13.39	346.8	
3	175	626.16	5,415.6	
4	194	85.30	665.5	
5	216	126.82	888.8	
6	226	72.49	486.5	
7	249	75.40	458.1	
8	267	95.41	541.5	
9	279	64.76	352.2	
10	288	60.34	317.3	
11	296	55.38	283.8	
12	306	73.51	364.3	
13	324	52.56	246.1	
14	329	48.16	221.7	
15	383	56.64	224.1	
16	437	44.32	153.7	
17	447	40.97	138.7	
18	469	93.03	300.6	
19	549	54.69	150.8	
20	586	44.73	115.7	
21	632	33.15	79.4	
22	663	40.64	92.8	
23	742	35.38	72.2	
24	827	56.29	103.2	
25	914	82.26	136.3	
26	1,113	29.13	39.7	

Assay Class: High Sensitivity DNA Assay
 Data Path: C:\...ents and Settings\Bioanalyzer\2012-08-08\2012-08-08_002.xad


Created: 8/8/2012 10:24:33 AM
 Modified: 8/8/2012 11:10:22 AM

Electropherogram Summary Continued ...

... Peak table for sample 1 : 2ng column

Peak	Size [bp]	Conc. [pg/μl]	Molarity [pmol/l]	Observations
27	1,235	23.21	28.5	
28	1,378	24.06	26.5	
29	1,555	11.52	11.2	
30	1,786	8.91	7.6	
31	2,332	7.49	4.9	
32	2,998	6.10	3.1	
33	3,508	6.17	2.7	
34	4,190	7.94	2.9	
35	4,701	5.37	1.7	
36	5,076	6.63	2.0	
37	6,474	5.91	1.4	
38	7,302	6.24	1.3	
39	10,380	75.00	10.9	Upper Marker
40	12,539	0.00	0.0	

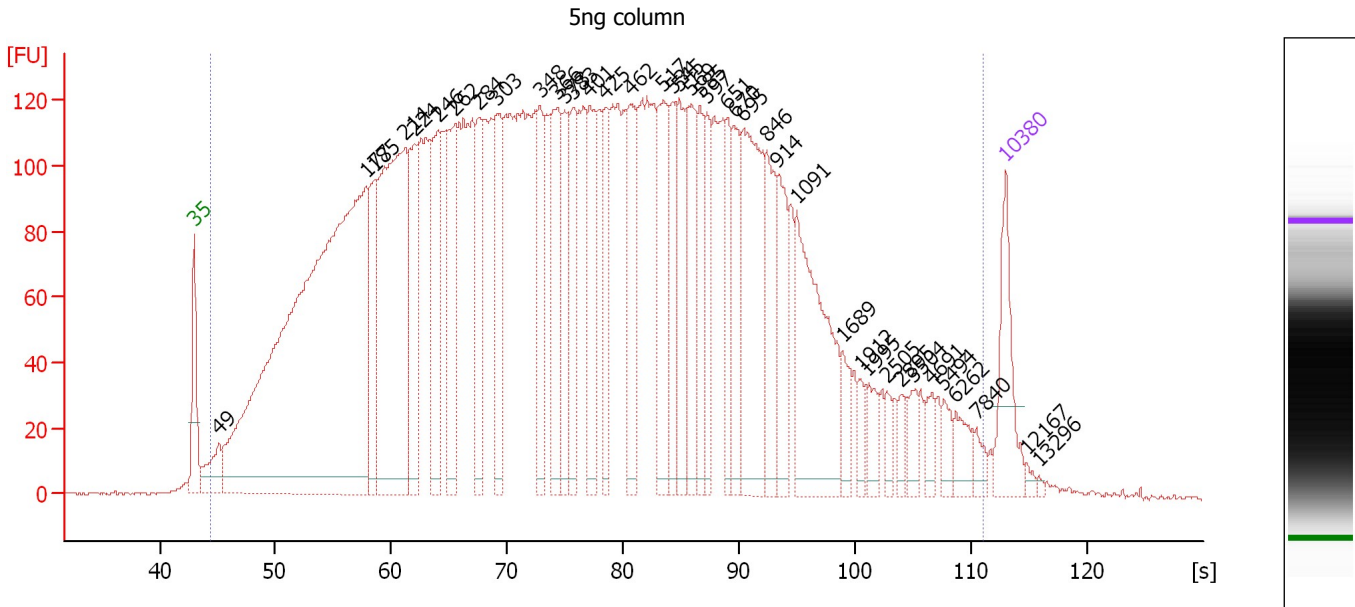
Region table for sample 1 : 2ng column

From [s]	To [s]	Average Size [bp]	Molarity [pmol/l]	Conc. [pg/μl]	Corr. Area	% of Total	Size distribution in CV [%]	Color
44.39	110.62	650	25,204.4	3,994.37	2,767.9	99	100.0	

Assay Class: High Sensitivity DNA Assay
 Data Path: C:\...ents and Settings\Bioanalyzer\2012-08-08\2012-08-08_002.xad

Created: 8/8/2012 10:24:33 AM
 Modified: 8/8/2012 11:10:22 AM

Electropherogram Summary Continued ...



Overall Results for sample 2 : 5ng column

Number of peaks found: 40 Corr. Area 1: 7,701.8
 Noise: 0.3

Peak table for sample 2 : 5ng column

Peak	Size [bp]	Conc. [pg/μl]	Molarity [pmol/l]	Observations
1	35	125.00	5,411.3	Lower Marker
2	49	68.61	2,137.7	
3	177	1,684.85	14,386.7	
4	185	163.47	1,339.2	
5	214	570.02	4,038.9	
6	224	173.32	1,174.4	
7	246	168.80	1,040.7	
8	262	194.64	1,126.8	
9	284	132.04	704.8	
10	303	145.68	729.3	
11	348	107.48	467.7	
12	366	174.24	720.6	
13	373	100.91	409.7	
14	383	122.02	482.2	
15	401	117.97	446.1	
16	425	94.14	335.4	
17	462	134.24	440.2	
18	517	148.31	434.9	
19	534	85.67	243.1	
20	545	115.89	322.2	
21	569	123.54	328.9	
22	585	77.76	201.3	
23	597	75.25	190.8	
24	651	74.39	173.0	
25	670	84.40	190.8	
26	695	240.01	523.2	

Assay Class: High Sensitivity DNA Assay
 Data Path: C:\...ents and Settings\Bioanalyzer\2012-08-08\2012-08-08_002.xad


Created: 8/8/2012 10:24:33 AM
 Modified: 8/8/2012 11:10:22 AM

Electropherogram Summary Continued ...

... Peak table for sample 2 : 5ng column

Peak	Size [bp]	Conc. [pg/µl]	Molarity [pmol/l]	Observations
27	846	97.97	175.5	
28	914	96.23	159.5	
29	1,091	222.52	309.1	
30	1,689	30.47	27.3	
31	1,912	18.61	14.8	
32	1,995	27.54	20.9	
33	2,505	14.88	9.0	
34	2,895	13.50	7.1	
35	3,504	21.47	9.3	
36	4,691	20.31	6.6	
37	5,494	19.98	5.5	
38	6,262	28.64	6.9	
39	7,840	14.41	2.8	
40	10,380	75.00	10.9	Upper Marker
41	12,167	0.00	0.0	
42	13,296	0.00	0.0	

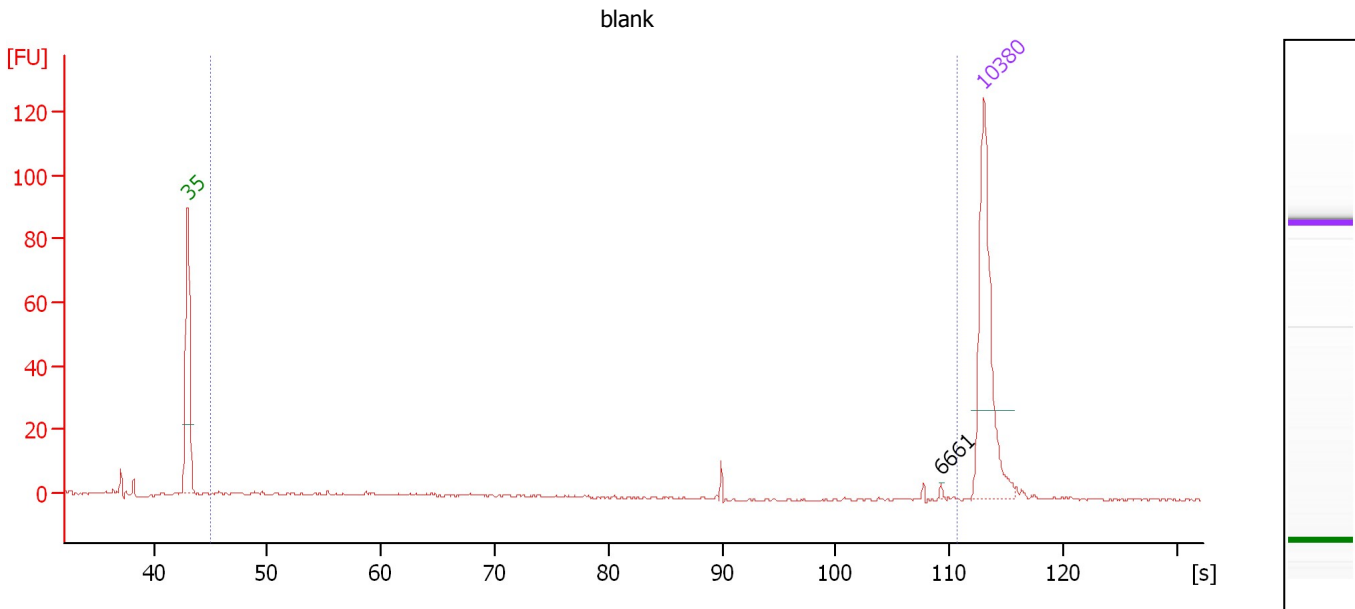
Region table for sample 2 : 5ng column

From [s]	To [s]	Average Size [bp]	Molarity [pmol/l]	Conc. [pg/µl]	Corr. Area	% of Total	Size distribution in CV [%]	Color
44.44	111.01	653	54,714.5	8,590.18	7,701.8	99	100.0	

Assay Class: High Sensitivity DNA Assay
 Data Path: C:\...ents and Settings\Bioanalyzer\2012-08-08\2012-08-08_002.xad

Created: 8/8/2012 10:24:33 AM
 Modified: 8/8/2012 11:10:22 AM

Electropherogram Summary Continued ...



Overall Results for sample 3 : blank

Number of peaks found: 1 Corr. Area 1: 30.3
 Noise: 0.4

Peak table for sample 3 : blank

Peak	Size [bp]	Conc. [pg/μl]	Molarity [pmol/l]	Observations
1	35	125.00	5,411.3	Lower Marker
2	6,661	0.81	0.2	
3	10,380	75.00	10.9	Upper Marker

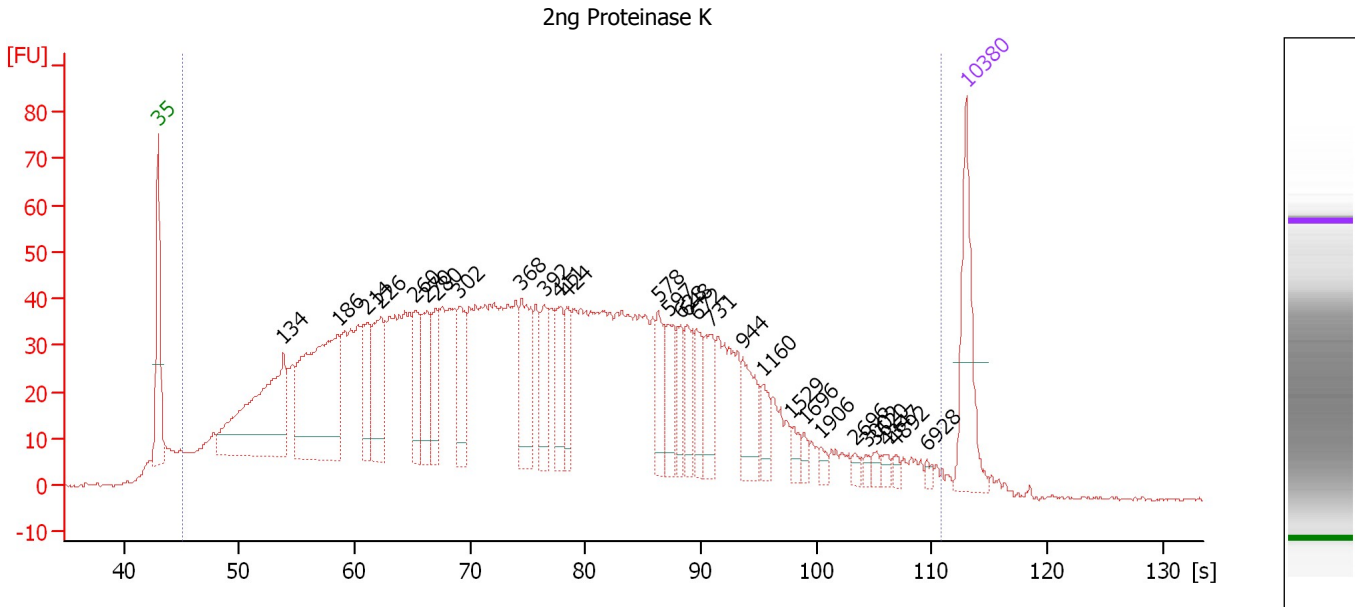
Region table for sample 3 : blank

From [s]	To [s]	Average Size [bp]	Molarity [pmol/l]	Conc. [pg/μl]	Corr. Area	% of Total	Size distribution in CV [%]	Color
44.95	110.59	1,097	324.9	29.76	30.3	57	100.0	Blue

Assay Class: High Sensitivity DNA Assay
 Data Path: C:\...ents and Settings\Bioanalyzer\2012-08-08\2012-08-08_002.xad

Created: 8/8/2012 10:24:33 AM
 Modified: 8/8/2012 11:10:22 AM

Electropherogram Summary Continued ...



Overall Results for sample 4 : 2ng Proteinase K

Number of peaks found: 29 Corr. Area 1: 2,500.8
 Noise: 0.3

Peak table for sample 4 : 2ng Proteinase K

Peak	Size [bp]	Conc. [pg/μl]	Molarity [pmol/l]	Observations
1	35	125.00	5,411.3	Lower Marker
2	134	274.35	3,091.6	
3	186	290.98	2,375.2	
4	214	65.58	465.2	
5	226	102.28	685.9	
6	260	60.38	352.2	
7	270	66.49	372.5	
8	280	58.61	317.7	
9	302	67.90	340.3	
10	368	77.24	318.0	
11	392	50.26	194.1	
12	411	49.19	181.3	
13	424	39.49	141.2	
14	578	41.61	109.0	
15	597	41.53	105.3	
16	628	29.69	71.7	
17	648	32.01	74.9	
18	672	35.61	80.3	
19	731	45.04	93.4	
20	944	44.92	72.1	
21	1,160	20.31	26.5	
22	1,529	10.81	10.7	
23	1,696	6.78	6.1	
24	1,906	6.59	5.2	
25	2,696	5.07	2.8	
26	3,028	4.40	2.2	

Assay Class: High Sensitivity DNA Assay
 Data Path: C:\...ents and Settings\Bioanalyzer\2012-08-08\2012-08-08_002.xad


Created: 8/8/2012 10:24:33 AM
 Modified: 8/8/2012 11:10:22 AM

Electropherogram Summary Continued ...

... Peak table for sample 4 : 2ng Proteinase K

Peak	Size [bp]	Conc. [pg/μl]	Molarity [pmol/l]	Observations
27	3,620	5.32	2.2	
28	4,347	6.14	2.1	
29	4,892	4.71	1.5	
30	6,928	4.16	0.9	
31	10,380	75.00	10.9	Upper Marker

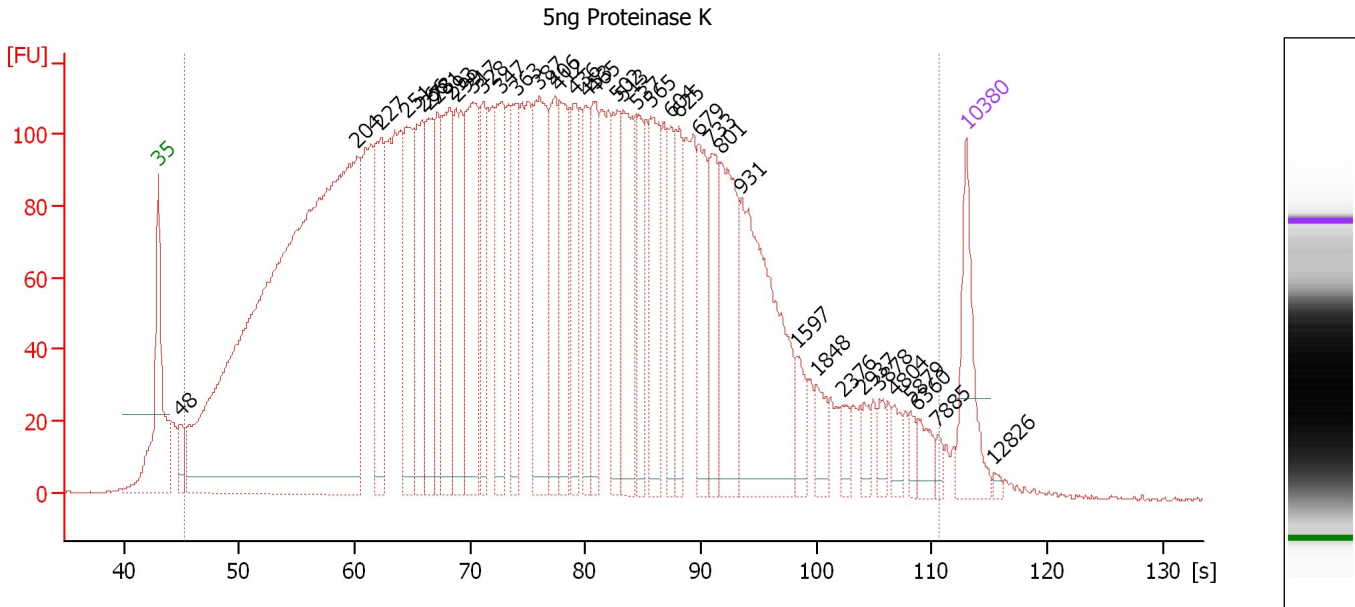
Region table for sample 4 : 2ng Proteinase K

From [s]	To [s]	Average Size [bp]	Molarity [pmol/l]	Conc. [pg/μl]	Corr. Area	% of Total	Size distribution in CV [%]	Color
45.15	110.78	610	25,268.8	3,875.29	2,500.8	98	100.0	

Assay Class: High Sensitivity DNA Assay
 Data Path: C:\...ents and Settings\Bioanalyzer\2012-08-08\2012-08-08_002.xad

Created: 8/8/2012 10:24:33 AM
 Modified: 8/8/2012 11:10:22 AM

Electropherogram Summary Continued ...



Overall Results for sample 5 : 5ng Proteinase K

Number of peaks found: 39 Corr. Area 1: 6,894.6
 Noise: 0.4

Peak table for sample 5 : 5ng Proteinase K

Peak	Size [bp]	Conc. [pg/μl]	Molarity [pmol/l]	Observations
1	35	125.00	5,411.3	Lower Marker
2	48	39.13	1,239.0	
3	204	1,863.79	13,858.5	
4	227	181.05	1,210.0	
5	251	176.69	1,065.3	
6	266	172.04	979.8	
7	273	135.69	754.1	
8	281	116.21	627.1	
9	293	183.79	949.2	
10	299	164.14	832.2	
11	317	226.54	1,081.3	
12	328	106.78	493.7	
13	347	141.57	618.1	
14	363	106.18	442.8	
15	387	202.04	791.3	
16	406	125.60	468.4	
17	412	131.27	482.4	
18	436	101.38	352.5	
19	453	86.41	289.0	
20	465	105.59	343.9	
21	502	107.56	324.6	
22	513	148.37	438.4	
23	537	100.30	282.8	
24	565	123.72	331.6	
25	604	68.06	170.8	
26	625	72.76	176.3	

Assay Class: High Sensitivity DNA Assay
 Data Path: C:\...ents and Settings\Bioanalyzer\2012-08-08\2012-08-08_002.xad


Created: 8/8/2012 10:24:33 AM
 Modified: 8/8/2012 11:10:22 AM

Electropherogram Summary Continued ...

... Peak table for sample 5 : 5ng Proteinase K

Peak	Size [bp]	Conc. [pg/µl]	Molarity [pmol/l]	Observations
27	679	94.28	210.3	
28	733	86.29	178.4	
29	801	147.38	278.7	
30	931	273.45	445.1	
31	1,597	29.74	28.2	
32	1,848	26.93	22.1	
33	2,376	16.23	10.3	
34	2,937	15.12	7.8	
35	3,878	14.62	5.7	
36	4,804	16.05	5.1	
37	5,879	12.49	3.2	
38	6,360	20.51	4.9	
39	7,885	8.12	1.6	
40	10,380	75.00	10.9	Upper Marker
41	12,826	0.00	0.0	

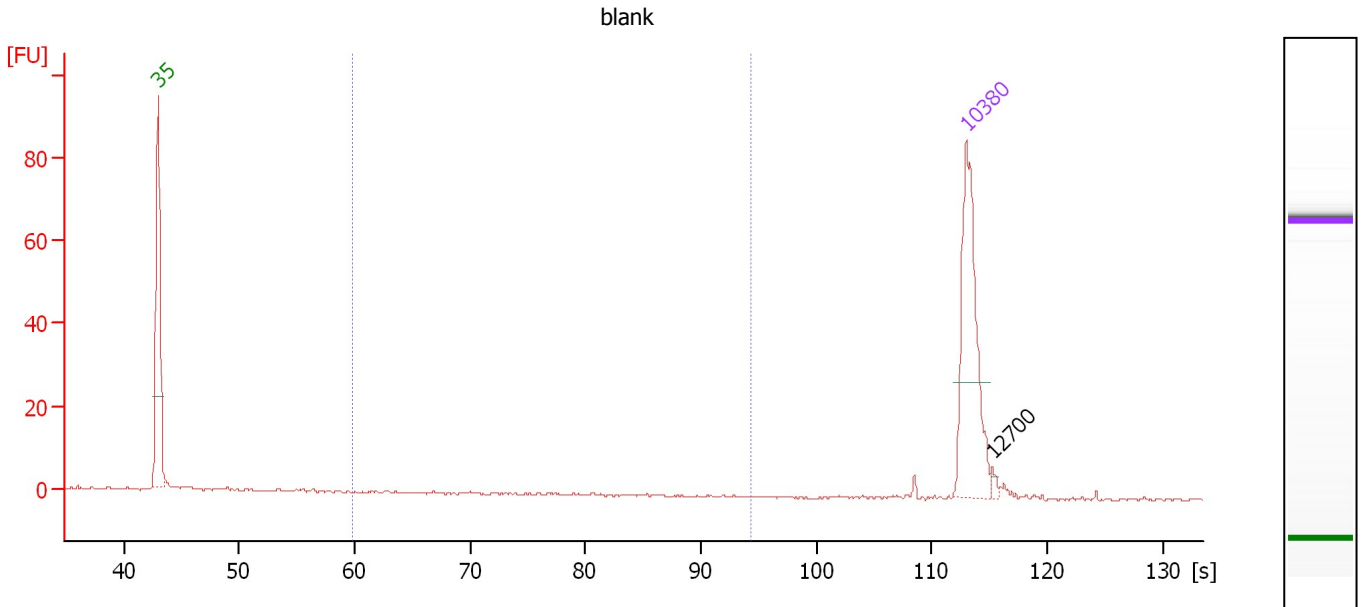
Region table for sample 5 : 5ng Proteinase K

From [s]	To [s]	Average Size [bp]	Molarity [pmol/l]	Conc. [pg/µl]	Corr. Area	% of Total	Size distribution in CV [%]	Color
45.21	110.58	625	48,250.6	7,542.92	6,894.6	99	100.0	

Assay Class: High Sensitivity DNA Assay
 Data Path: C:\...ents and Settings\Bioanalyzer\2012-08-08\2012-08-08_002.xad

Created: 8/8/2012 10:24:33 AM
 Modified: 8/8/2012 11:10:22 AM

Electropherogram Summary Continued ...



Overall Results for sample 6 : blank

Number of peaks found: 1 Corr. Area 1: 0.0
 Noise: 0.2

Peak table for sample 6 : blank

Peak	Size [bp]	Conc. [pg/μl]	Molarity [pmol/l]	Observations
1	35	125.00	5,411.3	Lower Marker
2	10,380	75.00	10.9	Upper Marker
3	12,700	0.00	0.0	

Region table for sample 6 : blank

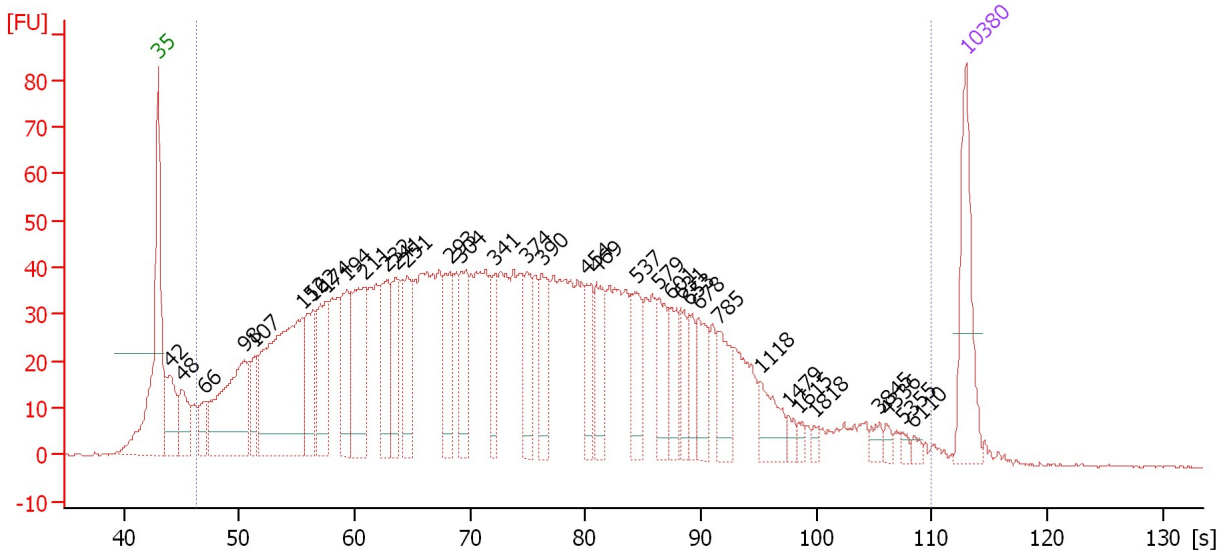
From [s]	To [s]	Average Size [bp]	Molarity [pmol/l]	Conc. [pg/μl]	Corr. Area	% of Total	Size distribution in CV [%]	Color
59.92	94.38	353	0.2	0.05	0.0	0	20.5	Blue

Assay Class: High Sensitivity DNA Assay
 Data Path: C:\...ents and Settings\Bioanalyzer\2012-08-08\2012-08-08_002.xad

Created: 8/8/2012 10:24:33 AM
 Modified: 8/8/2012 11:10:22 AM

Electropherogram Summary Continued ...

2ng No Proteinase K



Overall Results for sample 7 : 2ng No Proteinase K

Number of peaks found: 35 Corr. Area 1: 2,401.7
 Noise: 0.3

Peak table for sample 7 : 2ng No Proteinase K

Peak	Size [bp]	Conc. [pg/μl]	Molarity [pmol/l]	Observations
1	35	125.00	5,411.3	Lower Marker
2	42	81.79	2,982.4	
3	48	61.63	1,928.0	
4	66	31.82	726.8	
5	98	202.75	3,137.9	
6	107	50.32	710.1	
7	152	341.45	3,401.2	
8	162	86.95	814.0	
9	174	98.01	852.1	
10	194	88.96	695.8	
11	211	125.29	900.4	
12	232	85.58	558.9	
13	241	66.13	415.9	
14	251	69.39	418.1	
15	293	73.23	379.1	
16	304	71.87	357.9	
17	341	49.80	221.6	
18	374	49.89	202.2	
19	390	64.31	249.6	
20	454	42.64	142.2	
21	469	56.43	182.2	
22	537	52.70	148.6	
23	579	47.04	123.1	
24	601	41.68	105.1	
25	631	28.08	67.4	
26	653	27.35	63.5	

Assay Class: High Sensitivity DNA Assay
 Data Path: C:\...ents and Settings\Bioanalyzer\2012-08-08\2012-08-08_002.xad


Created: 8/8/2012 10:24:33 AM
 Modified: 8/8/2012 11:10:22 AM

Electropherogram Summary Continued ...

... Peak table for sample 7 : 2ng No Proteinase K

Peak	Size [bp]	Conc. [pg/µl]	Molarity [pmol/l]	Observations
27	678	46.33	103.5	
28	785	44.08	85.1	
29	1,118	34.23	46.4	
30	1,479	8.05	8.2	
31	1,615	6.23	5.8	
32	1,818	4.79	4.0	
33	3,845	8.52	3.4	
34	4,336	5.71	2.0	
35	5,355	4.79	1.4	
36	6,110	4.53	1.1	
37	▶ 10,380	75.00	10.9	Upper Marker

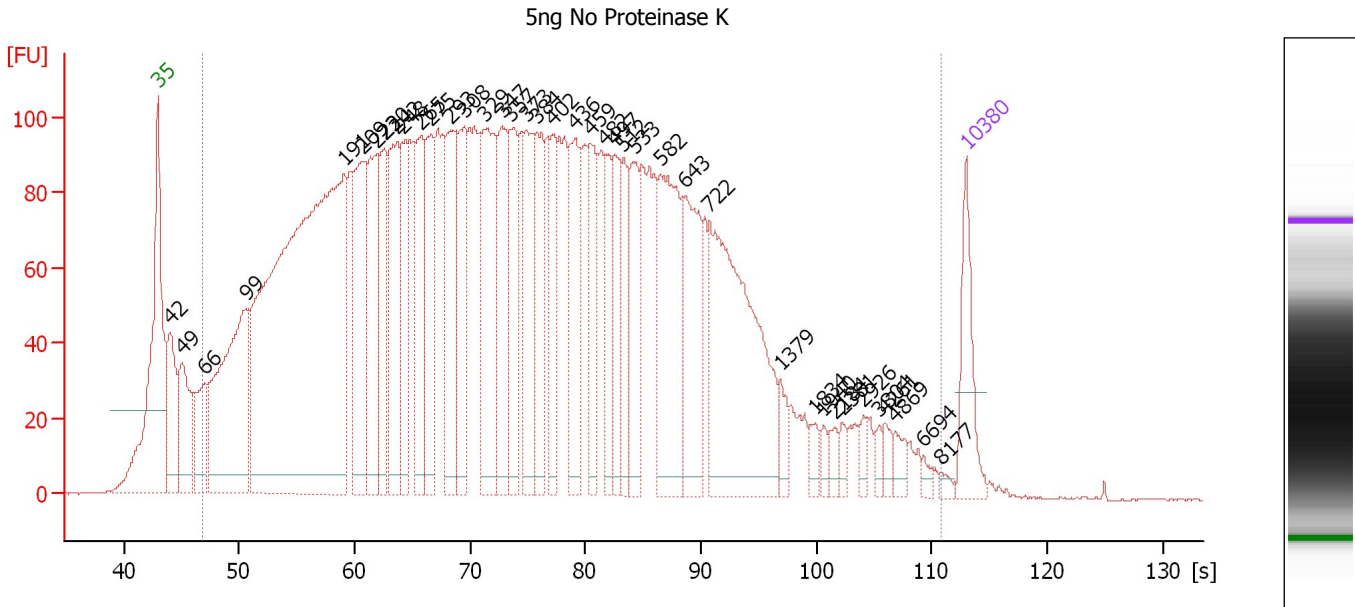
Region table for sample 7 : 2ng No Proteinase K

From [s]	To [s]	Average Size [bp]	Molarity [pmol/l]	Conc. [pg/µl]	Corr. Area	% of Total	Size distribution in CV [%]	Color
46.32	110.01	530	23,580.7	3,525.61	2,401.7	96	100.0	

Assay Class: High Sensitivity DNA Assay
 Data Path: C:\...ents and Settings\Bioanalyzer\2012-08-08\2012-08-08_002.xad

Created: 8/8/2012 10:24:33 AM
 Modified: 8/8/2012 11:10:22 AM

Electropherogram Summary Continued ...



Overall Results for sample 8 : 5ng No Proteinase K

Number of peaks found: 40 Corr. Area 1: 5,859.3
 Noise: 0.2

Peak table for sample 8 : 5ng No Proteinase K

Peak	Size [bp]	Conc. [pg/μl]	Molarity [pmol/l]	Observations
1	35	125.00	5,411.3	Lower Marker
2	42	160.87	5,859.4	
3	49	147.16	4,594.6	
4	66	120.26	2,754.7	
5	99	487.02	7,463.7	
6	191	1,580.79	12,526.9	
7	209	274.02	1,987.6	
8	222	214.08	1,458.9	
9	230	157.70	1,040.5	
10	242	221.69	1,388.1	
11	248	154.87	947.8	
12	265	192.42	1,100.3	
13	275	167.94	925.1	
14	293	214.43	1,108.8	
15	308	158.56	780.6	
16	329	252.67	1,161.9	
17	347	171.19	746.5	
18	357	140.94	598.6	
19	373	152.27	618.8	
20	384	147.34	581.3	
21	402	102.08	384.8	
22	436	150.20	522.2	
23	459	116.73	385.4	
24	482	91.08	286.2	
25	497	103.36	315.0	
26	512	86.31	255.4	

Assay Class: High Sensitivity DNA Assay
 Data Path: C:\...ents and Settings\Bioanalyzer\2012-08-08\2012-08-08_002.xad

Created: 8/8/2012 10:24:33 AM
 Modified: 8/8/2012 11:10:22 AM

Electropherogram Summary Continued ...

... Peak table for sample 8 : 5ng No Proteinase K

Peak	Size [bp]	Conc. [pg/μl]	Molarity [pmol/l]	Observations
27	533	121.57	345.7	
28	582	235.93	613.8	
29	643	178.41	420.6	
30	722	423.06	887.5	
31	1,379	27.55	30.3	
32	1,834	17.15	14.2	
33	1,940	10.99	8.6	
34	2,184	14.02	9.7	
35	2,381	12.91	8.2	
36	2,926	13.97	7.2	
37	3,804	10.78	4.3	
38	4,261	14.73	5.2	
39	4,869	17.09	5.3	
40	6,694	7.32	1.7	
41	8,177	6.17	1.1	
42	10,380	75.00	10.9	Upper Marker

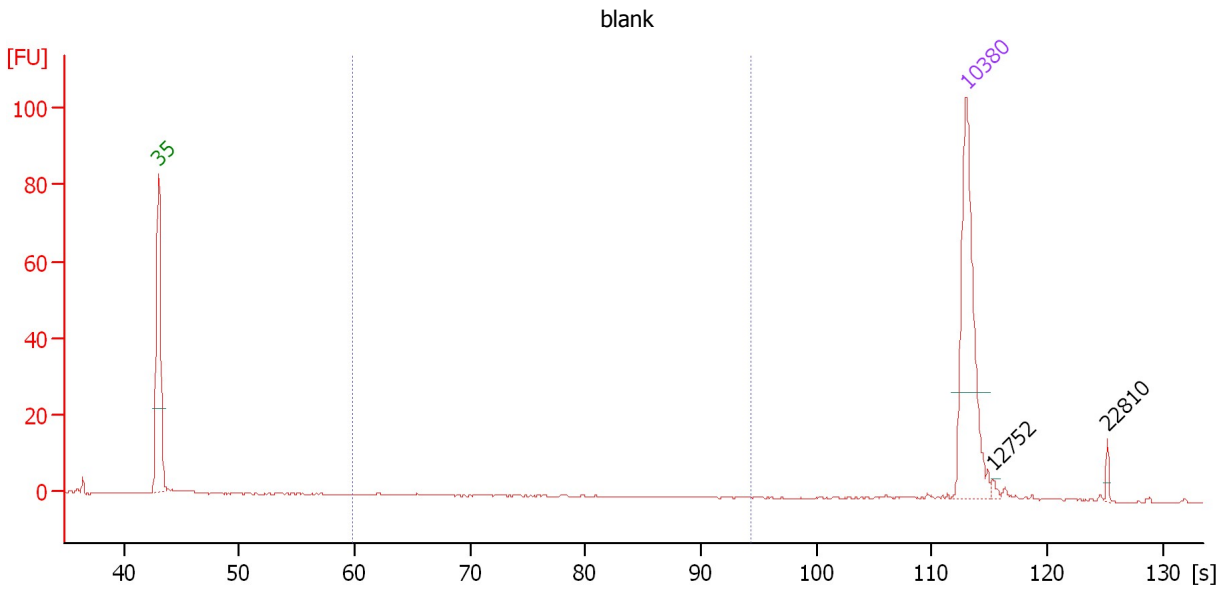
Region table for sample 8 : 5ng No Proteinase K

From [s]	To [s]	Average Size [bp]	Molarity [pmol/l]	Conc. [pg/μl]	Corr. Area	% of Total	Size distribution in CV [%]	Color
46.81	110.77	552	54,101.7	8,277.29	5,859.3	96	100.0	

Assay Class: High Sensitivity DNA Assay
 Data Path: C:\...ents and Settings\Bioanalyzer\2012-08-08\2012-08-08_002.xad

Created: 8/8/2012 10:24:33 AM
 Modified: 8/8/2012 11:10:22 AM

Electropherogram Summary Continued ...



Overall Results for sample 9 : blank

Number of peaks found: 2 Corr. Area 1: 0.1
 Noise: 0.2

Peak table for sample 9 : blank

Peak	Size [bp]	Conc. [pg/μl]	Molarity [pmol/l]	Observations
1	35	125.00	5,411.3	Lower Marker
2	10,380	75.00	10.9	Upper Marker
3	12,752	0.00	0.0	
4	22,810	0.00	0.0	

Region table for sample 9 : blank

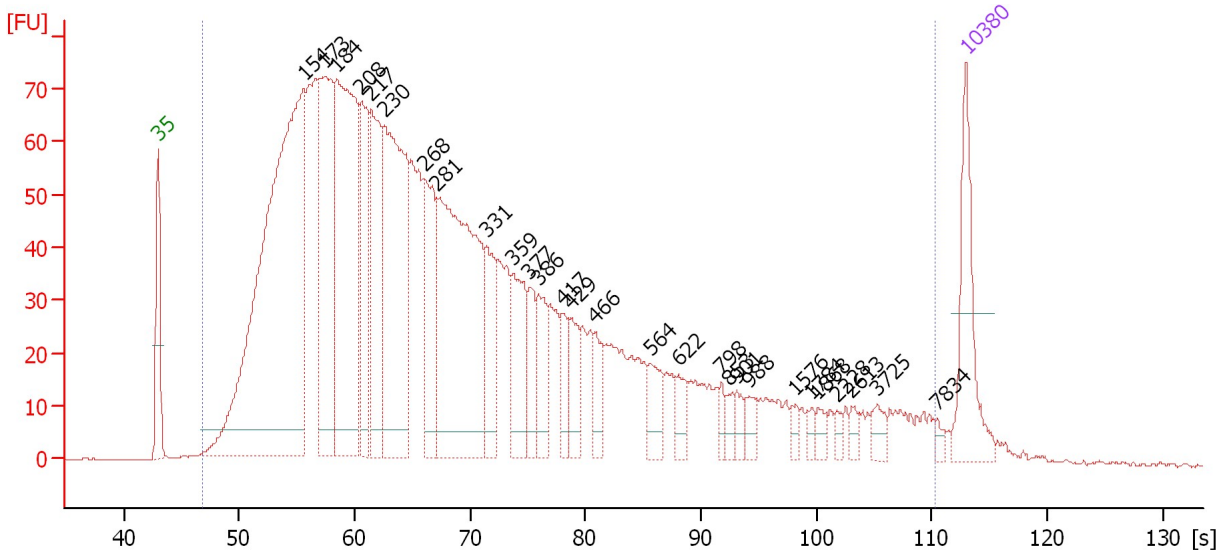
From [s]	To [s]	Average Size [bp]	Molarity [pmol/l]	Conc. [pg/μl]	Corr. Area % of Total	Size distribution in CV [%]	Color
59.92	94.38	224	0.6	0.09	0.1	1	Blue

Assay Class: High Sensitivity DNA Assay
 Data Path: C:\...ents and Settings\Bioanalyzer\2012-08-08\2012-08-08_002.xad

Created: 8/8/2012 10:24:33 AM
 Modified: 8/8/2012 11:10:22 AM

Electropherogram Summary Continued ...

2ng Input 071012



Overall Results for sample 10 : 2ng Input 071012

Number of peaks found: 28 Corr. Area 1: 2,815.2
 Noise: 0.2

Peak table for sample 10 : 2ng Input 071012

Peak	Size [bp]	Conc. [pg/μl]	Molarity [pmol/l]	Observations
1	35	125.00	5,411.3	Lower Marker
2	154	903.41	8,896.6	
3	173	280.76	2,456.3	
4	184	424.05	3,498.1	
5	208	143.61	1,047.9	
6	217	177.92	1,243.8	
7	230	342.14	2,255.7	
8	268	130.55	736.7	
9	281	402.70	2,171.4	
10	331	77.53	354.7	
11	359	84.67	356.9	
12	377	42.68	171.5	
13	386	50.49	198.3	
14	417	32.00	116.4	
15	429	38.64	136.4	
16	466	31.36	101.9	
17	564	32.33	86.8	
18	622	21.01	51.1	
19	798	11.21	21.3	
20	853	10.93	19.4	
21	901	13.49	22.7	
22	988	14.47	22.2	
23	1,576	8.46	8.1	
24	1,784	7.60	6.5	
25	1,868	8.67	7.0	
26	2,228	5.70	3.9	

Assay Class: High Sensitivity DNA Assay
 Data Path: C:\...ents and Settings\Bioanalyzer\2012-08-08\2012-08-08_002.xad


Created: 8/8/2012 10:24:33 AM
 Modified: 8/8/2012 11:10:22 AM

Electropherogram Summary Continued ...

... Peak table for sample 10 : 2ng Input 071012

Peak	Size [bp]	Conc. [pg/μl]	Molarity [pmol/l]	Observations
27	2,613	7.25	4.2	
28	3,725	12.12	4.9	
29	7,834	5.06	1.0	
30	10,380	75.00	10.9	Upper Marker

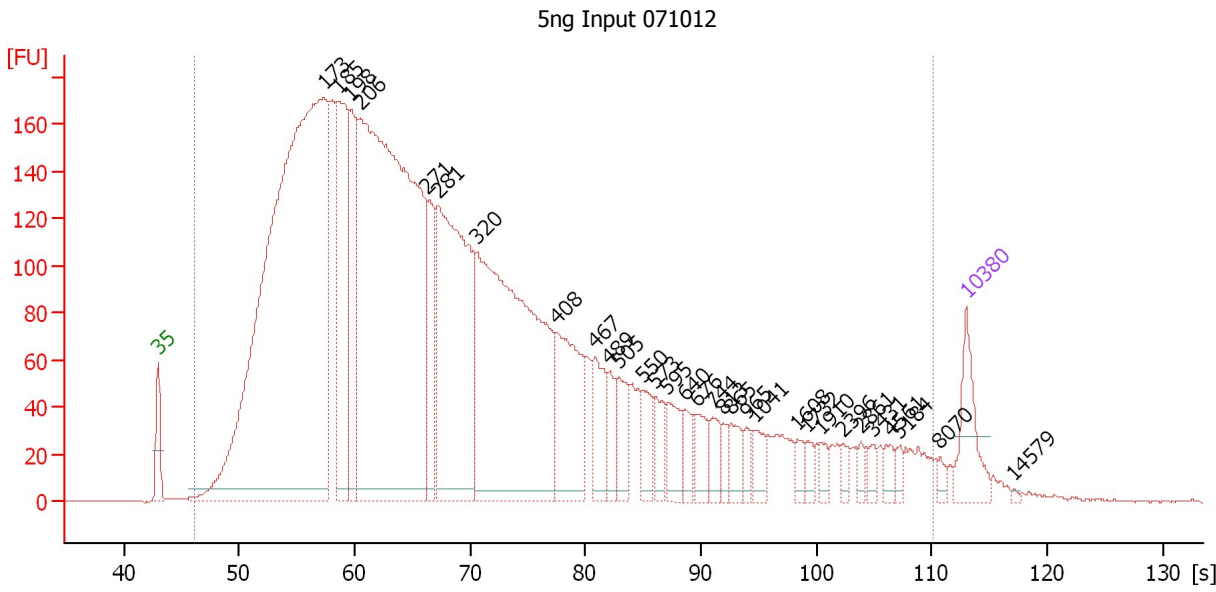
Region table for sample 10 : 2ng Input 071012

From [s]	To [s]	Average Size [bp]	Molarity [pmol/l]	Conc. [pg/μl]	Corr. Area	% of Total	Size distribution in CV [%]	Color
46.87	110.35	517	31,114.8	4,308.79	2,815.2	99	100.0	

Assay Class: High Sensitivity DNA Assay
 Data Path: C:\...ents and Settings\Bioanalyzer\2012-08-08\2012-08-08_002.xad

Created: 8/8/2012 10:24:33 AM
 Modified: 8/8/2012 11:10:22 AM

Electropherogram Summary Continued ...



Overall Results for sample 11 : 5ng Input 071012

Number of peaks found: 31 Corr. Area 1: 6,786.7
 Noise: 0.3

Peak table for sample 11 : 5ng Input 071012

Peak	Size [bp]	Conc. [pg/μl]	Molarity [pmol/l]	Observations
1	35	125.00	5,411.3	Lower Marker
2	173	2,460.70	21,606.0	
3	185	441.02	3,604.3	
4	198	244.24	1,872.2	
5	206	1,915.98	14,077.7	
6	271	156.16	872.6	
7	281	694.11	3,736.2	
8	320	996.26	4,714.5	
9	408	223.78	830.1	
10	467	97.07	315.0	
11	489	49.67	154.0	
12	505	72.86	218.5	
13	550	55.83	153.7	
14	573	47.85	126.6	
15	595	62.08	158.0	
16	640	41.02	97.1	
17	676	45.31	101.6	
18	744	36.49	74.3	
19	813	22.92	42.7	
20	865	37.83	66.3	
21	965	21.03	33.0	
22	1,041	30.78	44.8	
23	1,608	18.60	17.5	
24	1,732	17.76	15.5	
25	1,910	16.74	13.3	
26	2,396	13.16	8.3	

Assay Class: High Sensitivity DNA Assay
 Data Path: C:\...ents and Settings\Bioanalyzer\2012-08-08\2012-08-08_002.xad


Created: 8/8/2012 10:24:33 AM
 Modified: 8/8/2012 11:10:22 AM

Electropherogram Summary Continued ...

... Peak table for sample 11 : 5ng Input 071012

Peak	Size [bp]	Conc. [pg/µl]	Molarity [pmol/l]	Observations
27	2,861	12.94	6.9	
28	3,431	16.35	7.2	
29	4,561	17.12	5.7	
30	5,184	11.39	3.3	
31	8,070	9.27	1.7	
32	10,380	75.00	10.9	Upper Marker
33	14,579	0.00	0.0	

Region table for sample 11 : 5ng Input 071012

From [s]	To [s]	Average Size [bp]	Molarity [pmol/l]	Conc. [pg/µl]	Corr. Area	% of Total	Size distribution in CV [%]	Color
46.12	110.07	509	60,780.6	8,472.30	6,786.7	99	100.0	

Assay Class: High Sensitivity DNA Assay
Data Path: C:\...ents and Settings\Bioanalyzer\2012-08-08\2012-08-08_002.xad

Created: 8/8/2012 10:24:33 AM
Modified: 8/8/2012 11:10:22 AM

Gel Image

