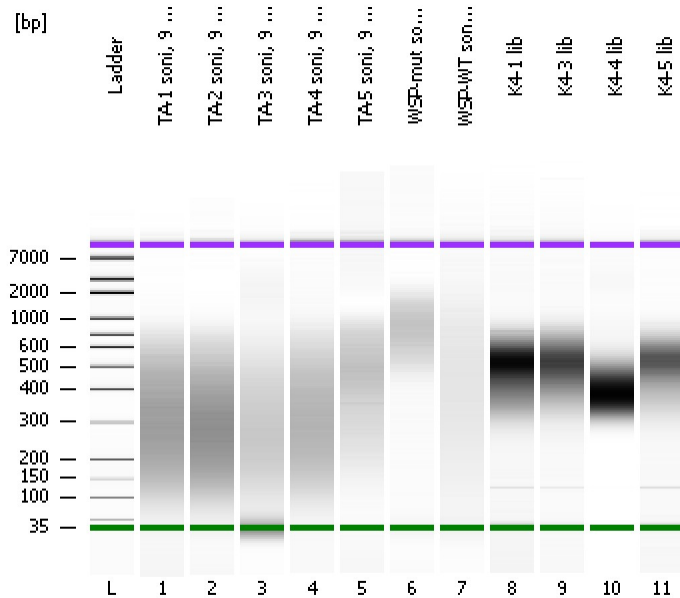


Assay Class: High Sensitivity DNA Assay
Data Path: C:\...ents and Settings\Bioanalyzer\2012-08-09\2012-08-09_001.xad

Created: 8/9/2012 8:56:41 AM
Modified: 8/9/2012 10:24:34 AM

Electrophoresis File Run Summary



Instrument Information:

Instrument Name: DE13701086 Firmware: C.01.069
Serial#: DE13701086 Type: G2938B

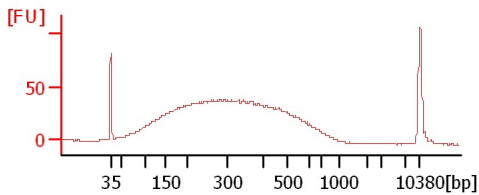
Assay Information:

Assay Origin Path: C:\Program Files\Agilent\2100 bioanalyzer\2100 expert\assays\dsDNA\High Sensitivity DNA.xsy
Assay Class: High Sensitivity DNA Assay
Version: 1.03
Assay Comments: Copyright © 2003-2010 Agilent Technologies

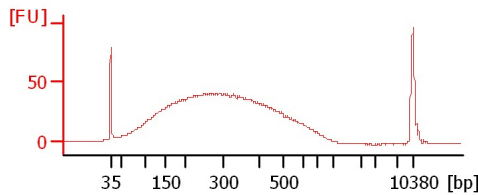
Chip Information:

Chip Lot #:
Reagent Kit Lot #:
Chip Comments:

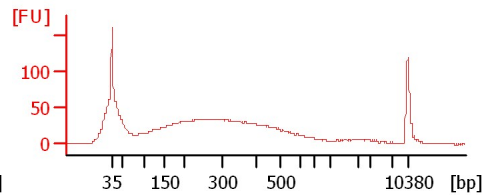
TA-1 soni, 9 cyc



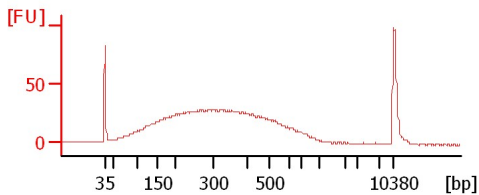
TA-2 soni, 9 cyc



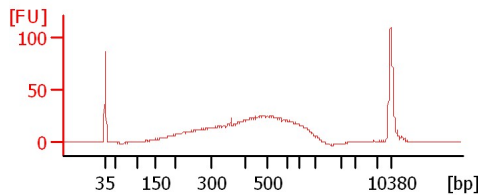
TA-3 soni, 9 cyc



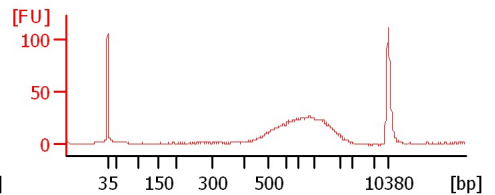
TA-4 soni, 9 cyc



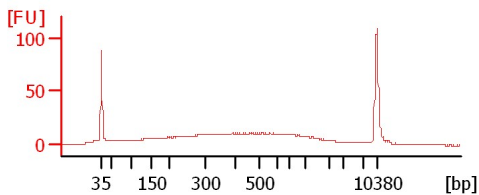
TA-5 soni, 9 cyc



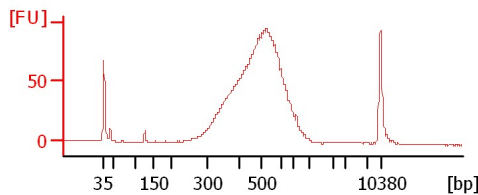
WSP-mut soni, 9 cyc



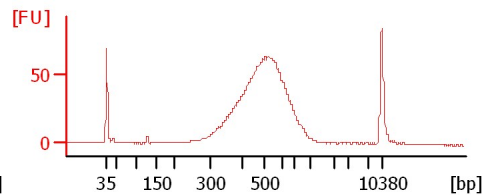
WSP-WT soni, 9 cyc



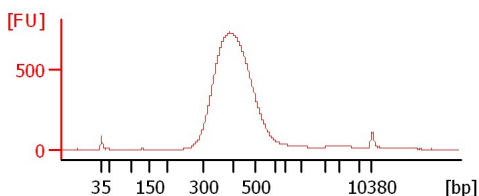
K4-1 lib



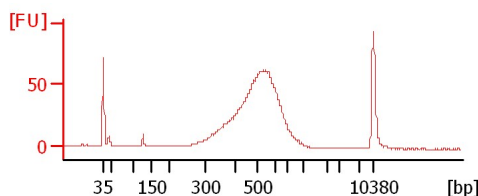
K4-3 lib



K4-4 lib



K4-5 lib



Assay Class: High Sensitivity DNA Assay
 Data Path: C:\...ents and Settings\Bioanalyzer\2012-08-09\2012-08-09_001.xad

Created: 8/9/2012 8:56:41 AM
 Modified: 8/9/2012 10:24:34 AM

Electrophoresis File Run Summary (Chip Summary)

Sample Name	Sample Comment	Rest. Digest	Status	Observation	Result Label	Result Color
TA-1 soni, 9 cyc		<input type="checkbox"/>	✓			
TA-2 soni, 9 cyc		<input type="checkbox"/>	✓			
TA-3 soni, 9 cyc		<input type="checkbox"/>	✓			
TA-4 soni, 9 cyc		<input type="checkbox"/>	✓			
TA-5 soni, 9 cyc		<input type="checkbox"/>	✓			
WSP-mut soni, 9 cyc		<input type="checkbox"/>	✓			
WSP-WT soni, 9 cyc		<input type="checkbox"/>	✓			
K4-1 lib		<input type="checkbox"/>	✓			
K4-3 lib		<input type="checkbox"/>	✓			
K4-4 lib		<input type="checkbox"/>	✓			
K4-5 lib		<input type="checkbox"/>	✓			
Ladder		<input type="checkbox"/>	✓			

Chip Lot #

Reagent Kit Lot #

Chip Comments :

Assay Class: High Sensitivity DNA Assay
Data Path: C:\...ents and Settings\Bioanalyzer\2012-08-09\2012-08-09_001.xad

Created: 8/9/2012 8:56:41 AM
Modified: 8/9/2012 10:24:34 AM

Electrophoresis Assay Details

General Analysis Settings

Number of Available Sample and Ladder Wells (Max.) : 12
Minimum Visible Range [s] : 32
Maximum Visible Range [s] : 138
Start Analysis Time Range [s] : 33
End Analysis Time Range [s] : 137.5
Ladder Concentration [pg/μl] : 1950
Uses Standard Area for Ladder Fragments
Lower Marker Concentration [pg/μl] : 125
Upper Marker Concentration [pg/μl] : 75
Used Upper Marker for Quantitation
Standard Curve Fit is Point to Point
Show Data Aligned to Lower and Upper Marker

Integrator Settings

Integration Start Time [s] : 33.05
Integration End Time [s] : 137
Slope Threshold : 0.8
Height Threshold [FU] : 5
Area Threshold : 0.1
Width Threshold [s] : 0.6
Baseline Plateau [s] : 0.5

Filter Settings

Filter Width [s] : 0.5
Polynomial Order : 4

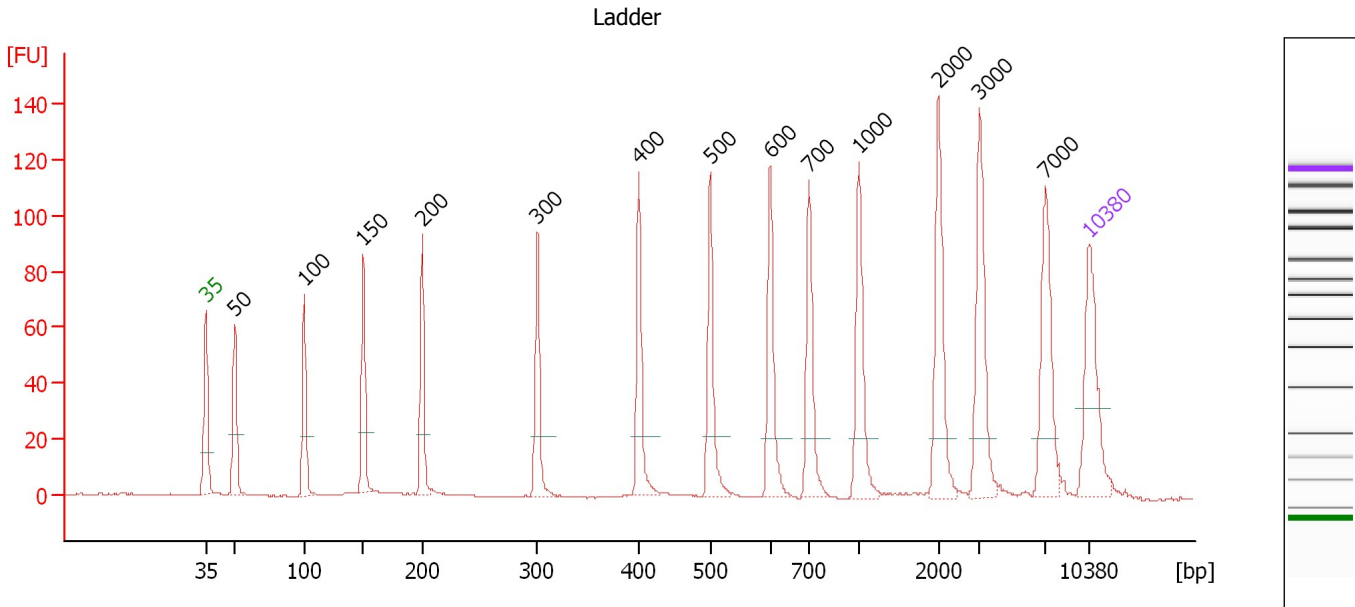
Ladder

Ladder Peak	Size	Area
1	35	160
2	50	210
3	100	208
4	150	221
5	200	242
6	300	270
7	400	305
8	500	306
9	600	336
10	700	321
11	1000	366
12	2000	413
13	3000	411
14	7000	400
15	10380	214

Assay Class: High Sensitivity DNA Assay
 Data Path: C:\...ents and Settings\Bioanalyzer\2012-08-09\2012-08-09_001.xad

Created: 8/9/2012 8:56:41 AM
 Modified: 8/9/2012 10:24:34 AM

Electropherogram Summary



Overall Results for Ladder

Noise: 0.2

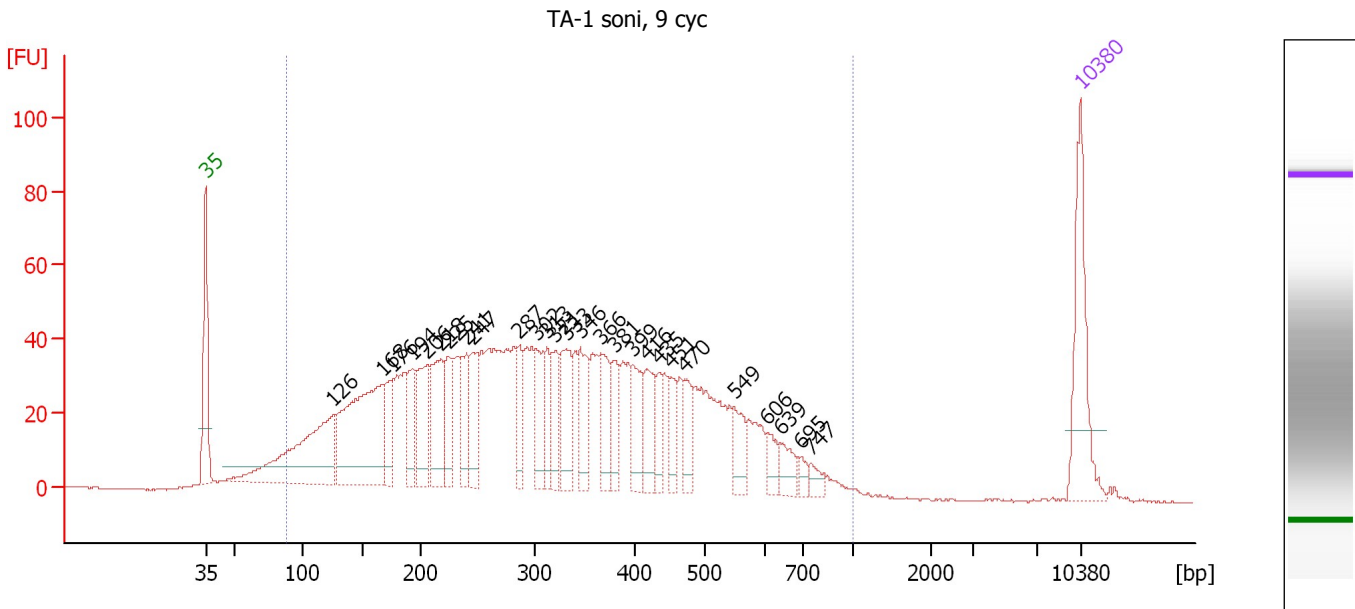
Peak table for Ladder

Peak	Size [bp]	Conc. [pg/μl]	Molarity [pmol/l]	Observations
1	35	125.00	5,411.3	Lower Marker
2	50	150.00	4,545.5	Ladder Peak
3	100	150.00	2,272.7	Ladder Peak
4	150	150.00	1,515.2	Ladder Peak
5	200	150.00	1,136.4	Ladder Peak
6	300	150.00	757.6	Ladder Peak
7	400	150.00	568.2	Ladder Peak
8	500	150.00	454.5	Ladder Peak
9	600	150.00	378.8	Ladder Peak
10	700	150.00	324.7	Ladder Peak
11	1,000	150.00	227.3	Ladder Peak
12	2,000	150.00	113.6	Ladder Peak
13	3,000	150.00	75.8	Ladder Peak
14	7,000	150.00	32.5	Ladder Peak
15	10,380	75.00	10.9	Upper Marker

Assay Class: High Sensitivity DNA Assay
 Data Path: C:\...ents and Settings\Bioanalyzer\2012-08-09\2012-08-09_001.xad

Created: 8/9/2012 8:56:41 AM
 Modified: 8/9/2012 10:24:34 AM

Electropherogram Summary Continued ...



Overall Results for sample 1 : TA-1 soni, 9 cyc

Number of peaks found: 27 Corr. Area 1: 1,942.1
 Noise: 0.1

Peak table for sample 1 : TA-1 soni, 9 cyc

Peak	Size [bp]	Conc. [pg/μl]	Molarity [pmol/l]	Observations
1	35	125.00	5,411.3	Lower Marker
2	126	218.81	2,637.6	
3	168	241.82	2,185.5	
4	176	44.03	379.3	
5	194	49.08	383.8	
6	206	74.63	548.2	
7	218	79.01	548.1	
8	225	50.01	336.1	
9	241	52.20	328.4	
10	247	59.07	362.5	
11	287	40.45	213.9	
12	302	50.13	251.7	
13	313	37.32	180.7	
14	321	41.89	197.5	
15	333	65.51	298.0	
16	346	57.12	249.9	
17	366	46.36	191.7	
18	381	36.34	144.6	
19	399	45.60	173.2	
20	416	46.02	167.4	
21	435	25.29	88.2	
22	451	27.74	93.2	
23	470	31.78	102.5	
24	549	29.13	80.4	
25	606	17.66	44.2	
26	639	20.57	48.8	

Assay Class: High Sensitivity DNA Assay
 Data Path: C:\...ents and Settings\Bioanalyzer\2012-08-09\2012-08-09_001.xad


Created: 8/9/2012 8:56:41 AM
 Modified: 8/9/2012 10:24:34 AM

Electropherogram Summary Continued ...

... Peak table for sample 1 : TA-1 soni, 9 cyc

Peak	Size [bp]	Conc. [pg/μl]	Molarity [pmol/l]	Observations
27	695	8.22	17.9	
28	747	11.26	22.8	
29	10,380	75.00	10.9	Upper Marker

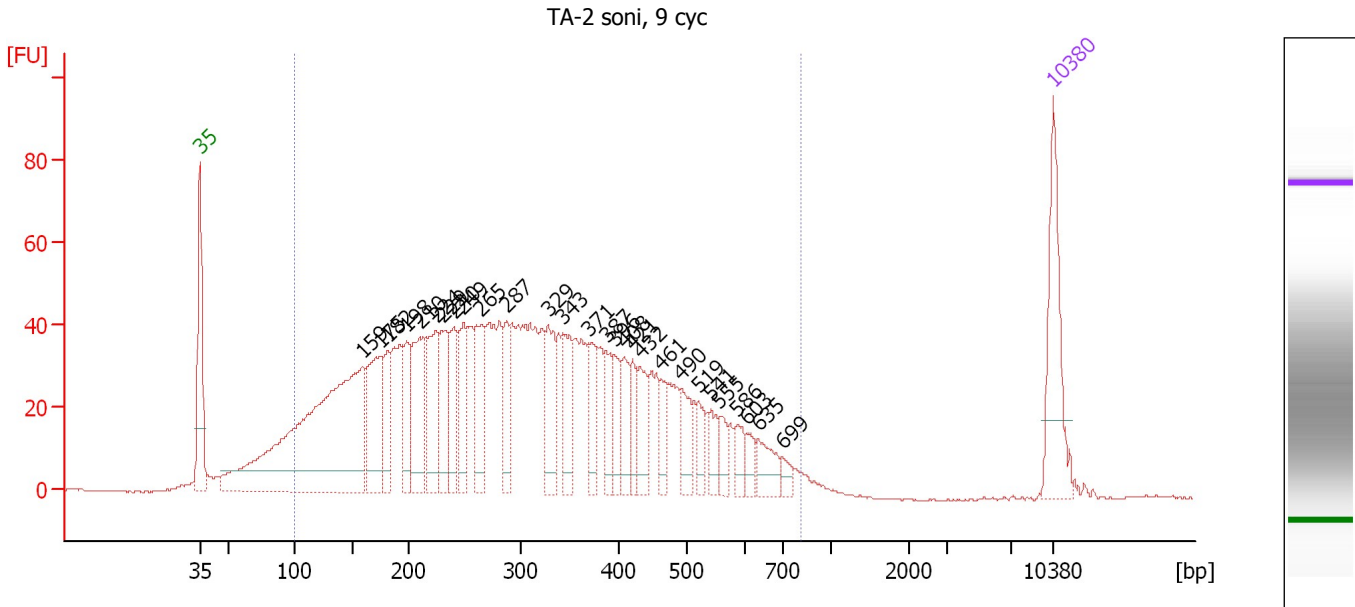
Region table for sample 1 : TA-1 soni, 9 cyc

From [bp]	To [bp]	Average Size [bp]	Molarity [pmol/l]	Conc. [pg/μl]	Corr. Area	% of Total	Size distribution in CV [%]	Color
88	1,000	333	15,336.7	2,386.23	1,942.1	96	45.4	

Assay Class: High Sensitivity DNA Assay
 Data Path: C:\...ents and Settings\Bioanalyzer\2012-08-09\2012-08-09_001.xad

Created: 8/9/2012 8:56:41 AM
 Modified: 8/9/2012 10:24:34 AM

Electropherogram Summary Continued ...



Overall Results for sample 2 : TA-2 soni, 9 cyc

Number of peaks found: 28 Corr. Area 1: 1,895.1
 Noise: 0.1

Peak table for sample 2 : TA-2 soni, 9 cyc

Peak	Size [bp]	Conc. [pg/μl]	Molarity [pmol/l]	Observations
1	35	125.00	5,411.3	Lower Marker
2	159	545.37	5,186.8	
3	175	115.64	1,002.2	
4	182	59.61	496.6	
5	198	52.39	401.2	
6	210	99.82	720.9	
7	224	87.70	592.8	
8	229	68.16	450.1	
9	240	62.92	396.5	
10	249	70.53	429.9	
11	265	75.95	434.4	
12	287	47.30	249.4	
13	329	63.05	290.7	
14	343	62.06	274.3	
15	371	39.49	161.5	
16	387	38.17	149.3	
17	396	34.09	130.4	
18	408	35.01	129.9	
19	421	27.27	98.2	
20	432	39.74	139.5	
21	461	26.85	88.2	
22	490	33.62	103.9	
23	519	22.24	65.0	
24	541	24.37	68.3	
25	555	18.10	49.4	
26	586	19.73	51.0	


Assay Class: High Sensitivity DNA Assay
Data Path: C:\...ents and Settings\Bioanalyzer\2012-08-09\2012-08-09_001.xad

Created: 8/9/2012 8:56:41 AM
Modified: 8/9/2012 10:24:34 AM

Electropherogram Summary Continued ...**... Peak table for sample 2 : TA-2 soni, 9 cyc**

Peak	Size [bp]	Conc. [pg/ μ l]	Molarity [pmol/l]	Observations
27	603	14.22	35.7	
28	635	29.06	69.4	
29	699	11.28	24.4	
30	10,380	75.00	10.9	Upper Marker

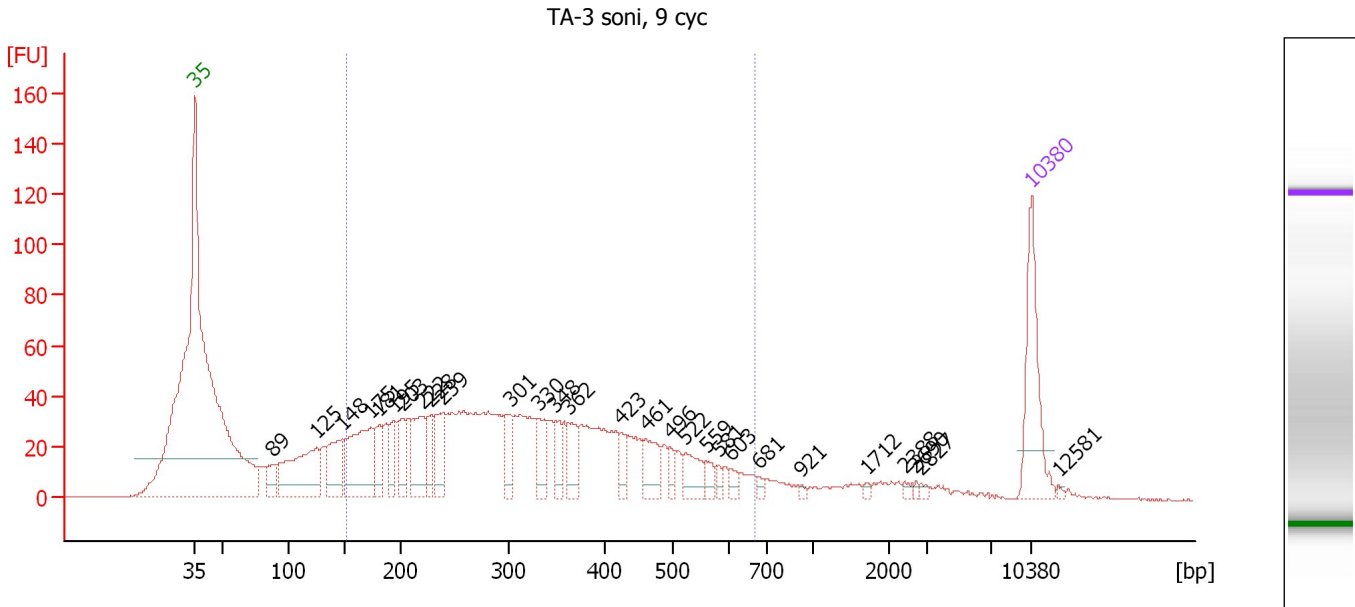
Region table for sample 2 : TA-2 soni, 9 cyc

From [bp]	To [bp]	Average Size [bp]	Molarity [pmol/l]	Conc. [pg/ μ l]	Corr. Area	% of Total	Size distribution in CV [%]	Color
99	808	319	16,106.0	2,508.15	1,895.1	93	43.0	

Assay Class: High Sensitivity DNA Assay
 Data Path: C:\...ents and Settings\Bioanalyzer\2012-08-09\2012-08-09_001.xad

Created: 8/9/2012 8:56:41 AM
 Modified: 8/9/2012 10:24:34 AM

Electropherogram Summary Continued ...



Overall Results for sample 3 : TA-3 soni, 9 cyc

Number of peaks found: 28 Corr. Area 1: 1,354.8
 Noise: 0.2

Peak table for sample 3 : TA-3 soni, 9 cyc

Peak	Size [bp]	Conc. [pg/μl]	Molarity [pmol/l]	Observations
1	35	125.00	5,411.3	Lower Marker
2	89	28.28	482.2	
3	125	141.55	1,709.6	
4	148	69.89	714.2	
5	175	132.70	1,151.5	
6	181	39.13	327.0	
7	195	34.04	264.2	
8	203	39.83	296.7	
9	222	72.11	493.2	
10	228	33.73	223.8	
11	239	49.09	311.7	
12	301	39.31	197.7	
13	330	34.77	159.6	
14	348	25.10	109.1	
15	362	35.40	148.0	
16	423	21.18	75.9	
17	461	37.92	124.7	
18	496	13.32	40.7	
19	522	30.66	89.1	
20	559	12.48	33.8	
21	581	7.20	18.8	
22	603	8.34	21.0	
23	681	5.29	11.8	
24	921	2.35	3.9	
25	1,712	3.07	2.7	
26	2,388	3.33	2.1	

Assay Class: High Sensitivity DNA Assay
 Data Path: C:\...ents and Settings\Bioanalyzer\2012-08-09\2012-08-09_001.xad


Created: 8/9/2012 8:56:41 AM
 Modified: 8/9/2012 10:24:34 AM

Electropherogram Summary Continued ...

... Peak table for sample 3 : TA-3 soni, 9 cyc

Peak	Size [bp]	Conc. [pg/μl]	Molarity [pmol/l]	Observations
27	2,690	2.29	1.3	
28	2,827	2.89	1.5	
29	10,380	75.00	10.9	Upper Marker
30	12,581	0.00	0.0	

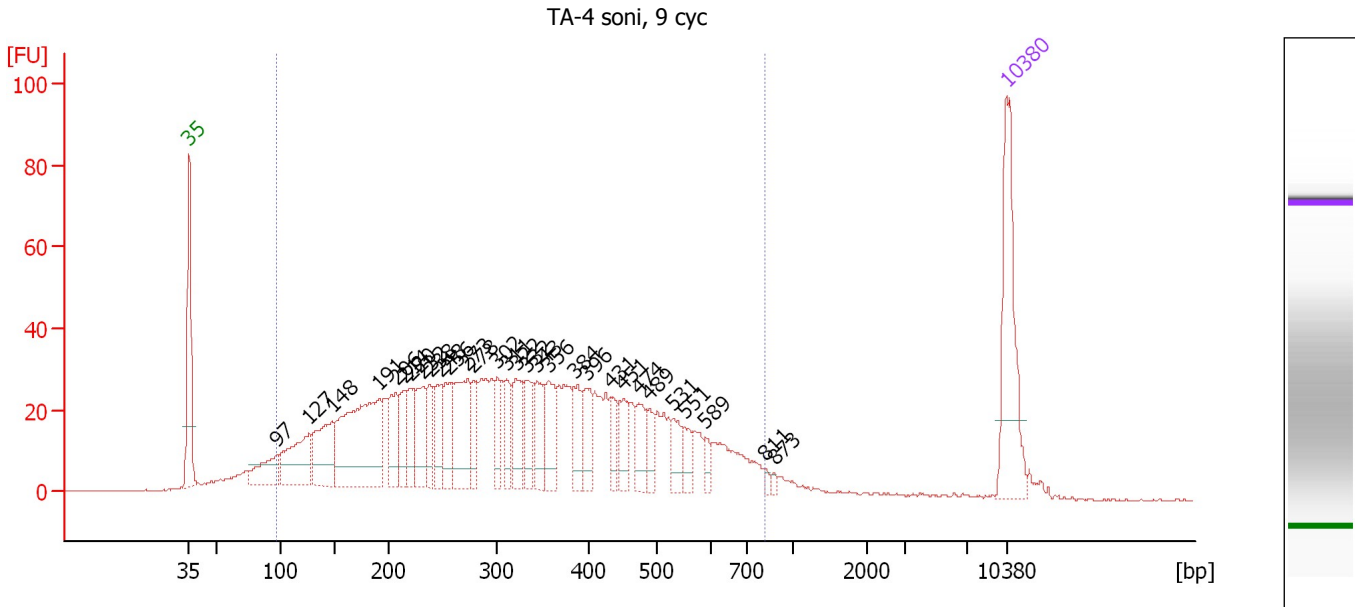
Region table for sample 3 : TA-3 soni, 9 cyc

From [bp]	To [bp]	Average Size [bp]	Molarity [pmol/l]	Conc. [pg/μl]	Corr. Area	% of Total	Size distribution in CV [%]	Color
153	670	330	7,485.5	1,341.51	1,354.8	78	36.2	

Assay Class: High Sensitivity DNA Assay
 Data Path: C:\...ents and Settings\Bioanalyzer\2012-08-09\2012-08-09_001.xad

Created: 8/9/2012 8:56:41 AM
 Modified: 8/9/2012 10:24:34 AM

Electropherogram Summary Continued ...



Overall Results for sample 4 : TA-4 soni, 9 cyc

Number of peaks found: 30 Corr. Area 1: 1,341.8
 Noise: 0.2

Peak table for sample 4 : TA-4 soni, 9 cyc

Peak	Size [bp]	Conc. [pg/μl]	Molarity [pmol/l]	Observations
1	35	125.00	5,411.3	Lower Marker
2	97	42.74	665.3	
3	127	75.10	899.3	
4	148	70.87	725.8	
5	191	173.74	1,381.1	
6	206	44.62	327.5	
7	214	31.76	224.4	
8	220	30.03	206.9	
9	232	45.28	295.8	
10	238	29.46	187.6	
11	248	33.57	205.2	
12	256	37.95	224.2	
13	273	74.06	410.4	
14	278	28.13	153.1	
15	302	27.07	136.0	
16	311	28.19	137.2	
17	322	41.37	194.7	
18	332	34.51	157.4	
19	343	34.95	154.4	
20	356	38.98	166.1	
21	384	32.12	126.7	
22	396	26.15	100.1	
23	431	19.09	67.1	
24	451	25.00	84.1	
25	474	25.65	82.0	
26	489	16.03	49.7	

Assay Class: High Sensitivity DNA Assay
Data Path: C:\...ents and Settings\Bioanalyzer\2012-08-09\2012-08-09_001.xad


Created: 8/9/2012 8:56:41 AM
Modified: 8/9/2012 10:24:34 AM

Electropherogram Summary Continued ...

... Peak table for sample 4 : TA-4 soni, 9 cyc

Peak	Size [bp]	Conc. [pg/μl]	Molarity [pmol/l]	Observations
27	531	18.72	53.4	
28	551	14.71	40.4	
29	589	8.40	21.6	
30	811	3.32	6.2	
31	873	2.81	4.9	
32	10,380	75.00	10.9	Upper Marker

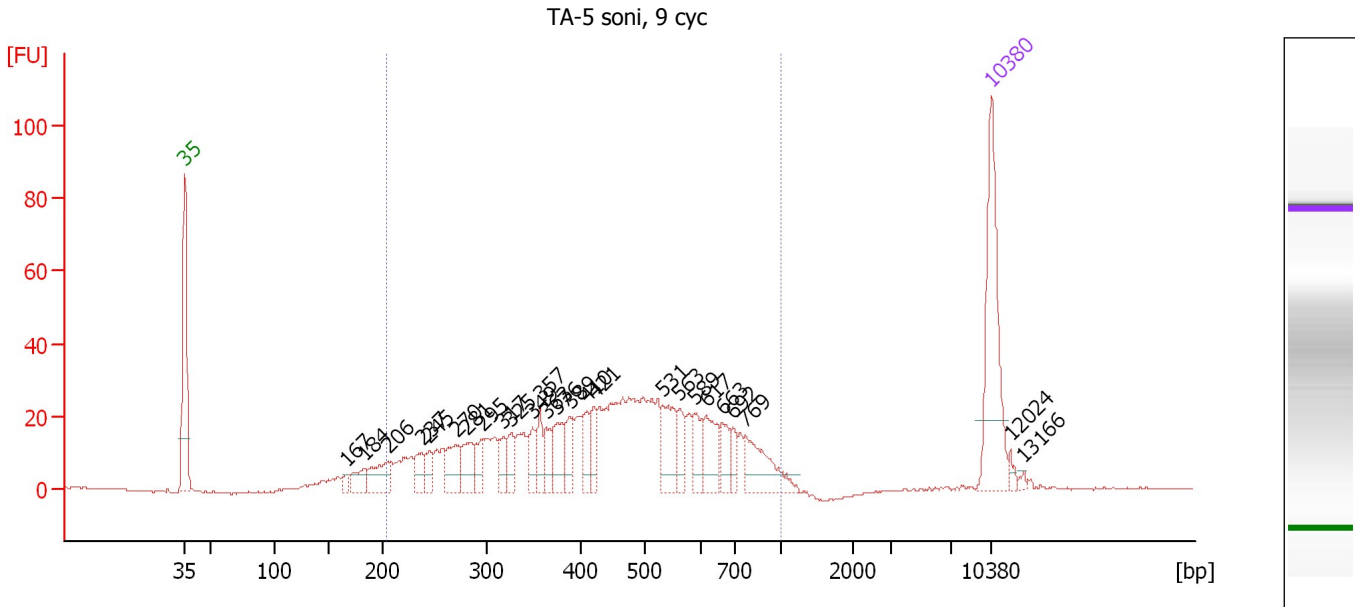
Region table for sample 4 : TA-4 soni, 9 cyc

From [bp]	To [bp]	Average Size [bp]	Molarity [pmol/l]	Conc. [pg/μl]	Corr. Area	% of Total	Size distribution in CV [%]	Color
97	817	336	9,572.7	1,543.68	1,341.8	92	43.3	

Assay Class: High Sensitivity DNA Assay
 Data Path: C:\...ents and Settings\Bioanalyzer\2012-08-09\2012-08-09_001.xad

Created: 8/9/2012 8:56:41 AM
 Modified: 8/9/2012 10:24:34 AM

Electropherogram Summary Continued ...



Overall Results for sample 5 : TA-5 soni, 9 cyc

Number of peaks found: 26 Corr. Area 1: 731.6
 Noise: 0.2

Peak table for sample 5 : TA-5 soni, 9 cyc

Peak	Size [bp]	Conc. [pg/μl]	Molarity [pmol/l]	Observations
1	35	125.00	5,411.3	Lower Marker
2	167	6.55	59.6	
3	184	18.65	153.9	
4	206	31.78	233.6	
5	237	20.15	128.5	
6	245	13.22	81.9	
7	270	28.48	159.6	
8	281	26.26	141.8	
9	295	15.98	82.1	
10	317	16.16	77.2	
11	325	17.78	82.9	
12	349	17.99	78.2	
13	357	17.58	74.6	
14	363	15.74	65.7	
15	376	25.73	103.7	
16	389	19.61	76.4	
17	410	16.80	62.1	
18	421	17.47	62.8	
19	531	35.59	101.6	
20	563	16.62	44.7	
21	589	21.07	54.2	
22	617	27.75	68.1	
23	663	16.58	37.9	
24	692	10.54	23.1	
25	769	38.75	76.4	
26	10,380	75.00	10.9	Upper Marker


Assay Class: High Sensitivity DNA Assay
Data Path: C:\...ents and Settings\Bioanalyzer\2012-08-09\2012-08-09_001.xad

Created: 8/9/2012 8:56:41 AM
Modified: 8/9/2012 10:24:34 AM

Electropherogram Summary Continued ...**... Peak table for sample 5 : TA-5 soni, 9 cyc**

Peak	Size [bp]	Conc. [pg/ μ l]	Molarity [pmol/l]	Observations
27	12,024	0.00	0.0	
28	13,166	0.00	0.0	

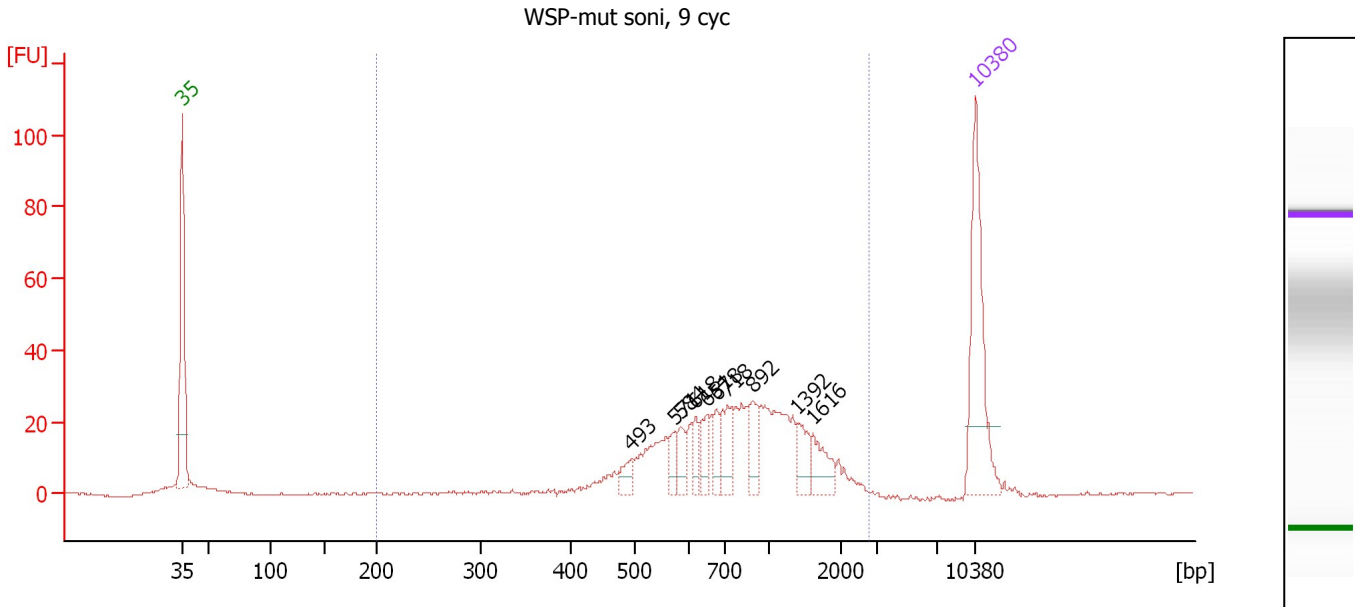
Region table for sample 5 : TA-5 soni, 9 cyc

From [bp]	To [bp]	Average Size [bp]	Molarity [pmol/l]	Conc. [pg/ μ l]	Corr. Area	% of Total	Size distribution in CV [%]	Color
204	1,000	464	2,818.8	721.75	731.6	92	34.7	

Assay Class: High Sensitivity DNA Assay
 Data Path: C:\...ents and Settings\Bioanalyzer\2012-08-09\2012-08-09_001.xad

Created: 8/9/2012 8:56:41 AM
 Modified: 8/9/2012 10:24:34 AM

Electropherogram Summary Continued ...



Overall Results for sample 6 : WSP-mut soni, 9 cyc

Number of peaks found: 10 Corr. Area 1: 422.4
 Noise: 0.2

Peak table for sample 6 : WSP-mut soni, 9 cyc

Peak	Size [bp]	Conc. [pg/μl]	Molarity [pmol/l]	Observations
1	35	125.00	5,411.3	Lower Marker
2	493	12.61	38.8	
3	571	12.34	32.7	
4	584	13.74	35.7	
5	618	12.45	30.5	
6	651	17.80	41.4	
7	678	14.01	31.3	
8	718	25.32	53.4	
9	892	19.11	32.5	
10	1,392	17.58	19.1	
11	1,616	21.14	19.8	
12	10,380	75.00	10.9	Upper Marker

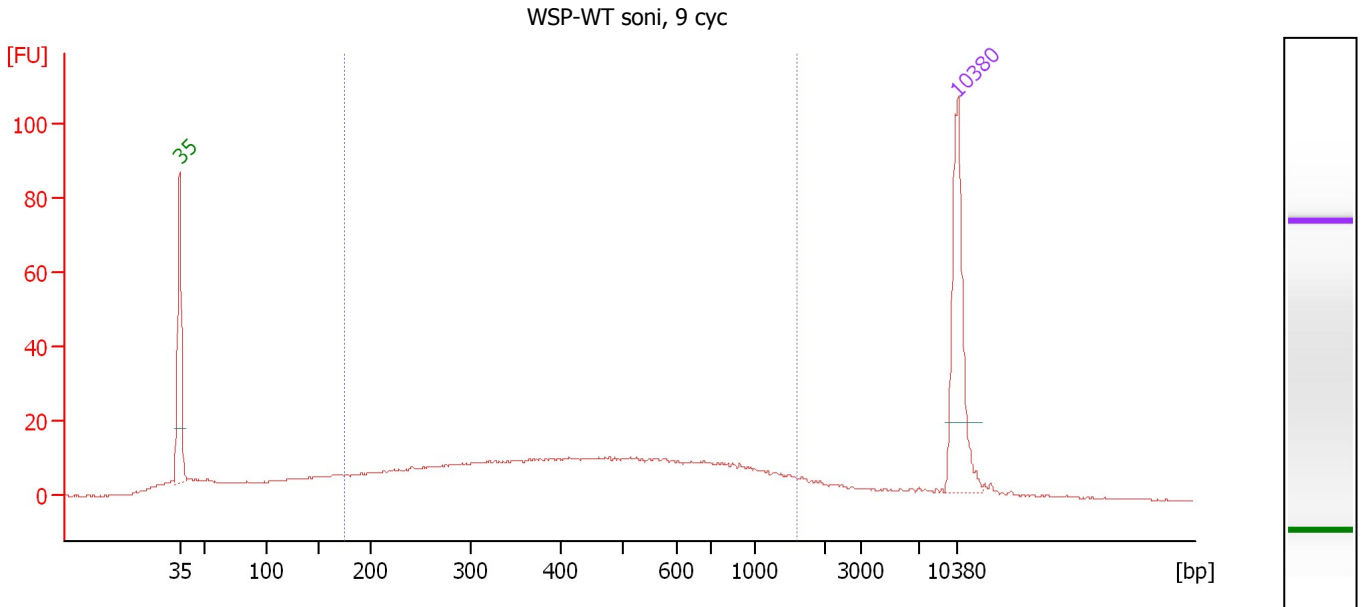
Region table for sample 6 : WSP-mut soni, 9 cyc

From [bp]	To [bp]	Average Size [bp]	Molarity [pmol/l]	Conc. [pg/μl]	Corr. Area	% of Total	Size distribution in CV [%]	Color
200	2,792	924	715.7	347.53	422.4	95	47.4	Blue

Assay Class: High Sensitivity DNA Assay
 Data Path: C:\...ents and Settings\Bioanalyzer\2012-08-09\2012-08-09_001.xad

Created: 8/9/2012 8:56:41 AM
 Modified: 8/9/2012 10:24:34 AM

Electropherogram Summary Continued ...



Overall Results for sample 7 : WSP-WT soni, 9 cyc

Number of peaks found: 0 Corr. Area 1: 484.3
 Noise: 0.2

Peak table for sample 7 : WSP-WT soni, 9 cyc

Peak	Size [bp]	Conc. [pg/μl]	Molarity [pmol/l]	Observations
1	35	125.00	5,411.3	Lower Marker
2	10,380	75.00	10.9	Upper Marker

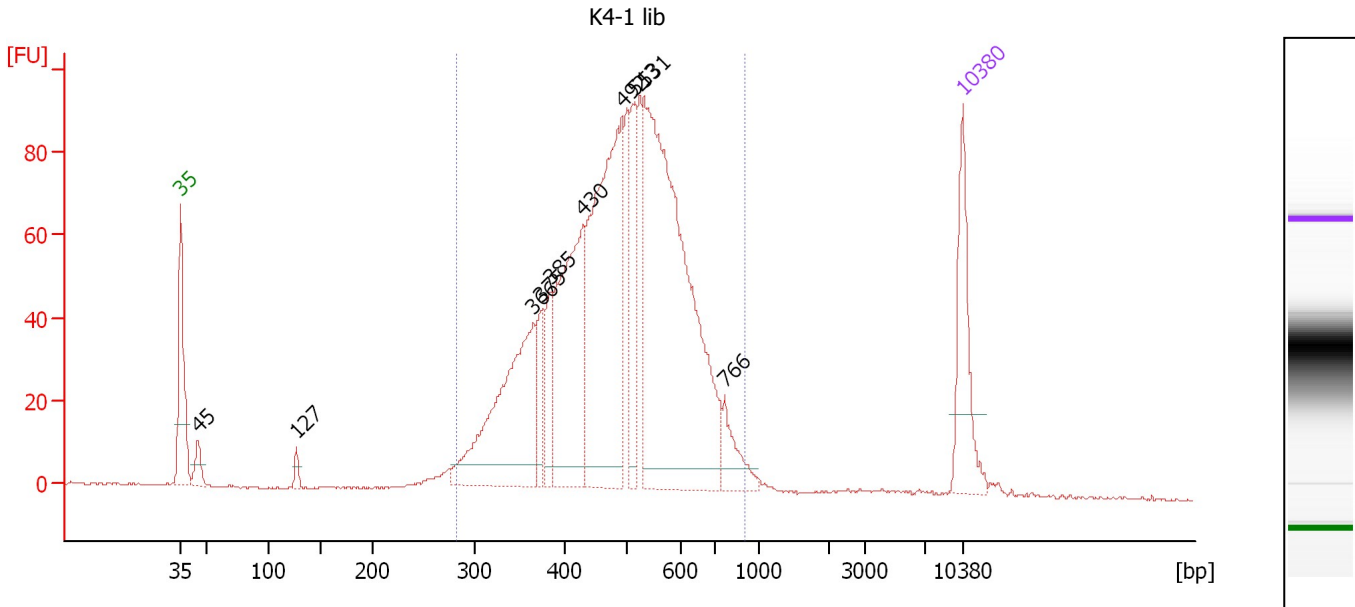
Region table for sample 7 : WSP-WT soni, 9 cyc

From [bp]	To [bp]	Average Size [bp]	Molarity [pmol/l]	Conc. [pg/μl]	Corr. Area	% of Total	Size distribution in CV [%]	Color
176	1,611	507	2,134.7	503.28	484.3	70	56.5	Blue

Assay Class: High Sensitivity DNA Assay
 Data Path: C:\...ents and Settings\Bioanalyzer\2012-08-09\2012-08-09_001.xad

Created: 8/9/2012 8:56:41 AM
 Modified: 8/9/2012 10:24:34 AM

Electropherogram Summary Continued ...



Overall Results for sample 8 : K4-1 lib

Number of peaks found: 10 Corr. Area 1: 1,584.7
 Noise: 0.3

Peak table for sample 8 : K4-1 lib

Peak	Size [bp]	Conc. [pg/μl]	Molarity [pmol/l]	Observations
1	35	125.00	5,411.3	Lower Marker
2	45	28.02	942.8	
3	127	12.17	144.7	
4	366	251.66	1,041.1	
5	375	44.98	181.9	
6	385	55.14	216.9	
7	430	237.41	835.7	
8	492	375.65	1,157.1	
9	513	86.20	254.4	
10	531	571.86	1,630.8	
11	766	39.01	77.2	
12	10,380	75.00	10.9	Upper Marker

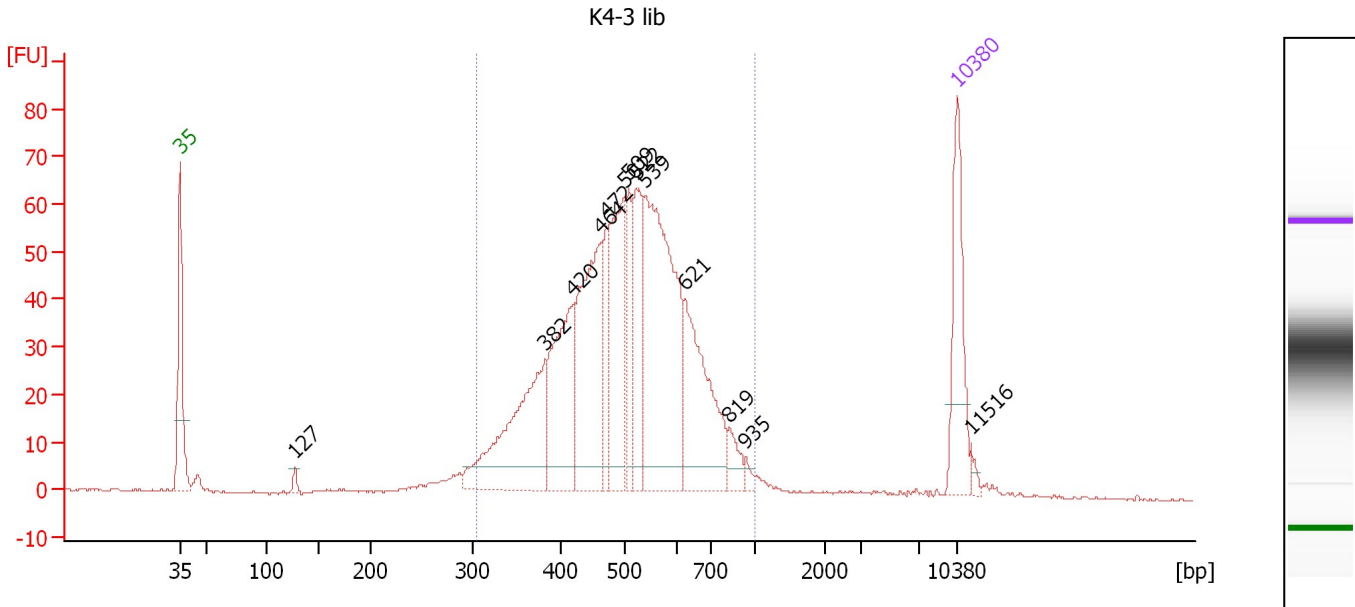
Region table for sample 8 : K4-1 lib

From [bp]	To [bp]	Average Size [bp]	Molarity [pmol/l]	Conc. [pg/μl]	Corr. Area	% of Total	Size distribution in CV [%]	Color
282	905	494	5,950.6	1,815.91	1,584.7	96	21.7	Blue

Assay Class: High Sensitivity DNA Assay
 Data Path: C:\...ents and Settings\Bioanalyzer\2012-08-09\2012-08-09_001.xad

Created: 8/9/2012 8:56:41 AM
 Modified: 8/9/2012 10:24:34 AM

Electropherogram Summary Continued ...



Overall Results for sample 9 : K4-3 lib

Number of peaks found: 13 Corr. Area 1: 1,064.2
 Noise: 0.2

Peak table for sample 9 : K4-3 lib

Peak	Size [bp]	Conc. [pg/μl]	Molarity [pmol/l]	Observations
1	35	125.00	5,411.3	Lower Marker
2	127	8.22	98.1	
3	382	191.90	760.9	
4	420	141.18	509.9	
5	464	193.40	632.2	
6	472	56.63	181.8	
7	501	142.42	430.8	
8	509	62.59	186.3	
9	522	90.63	263.1	
10	539	292.31	821.6	
11	621	143.98	351.3	
12	819	20.78	38.5	
13	935	5.41	8.8	
14	10,380	75.00	10.9	Upper Marker
15	11,516	0.00	0.0	

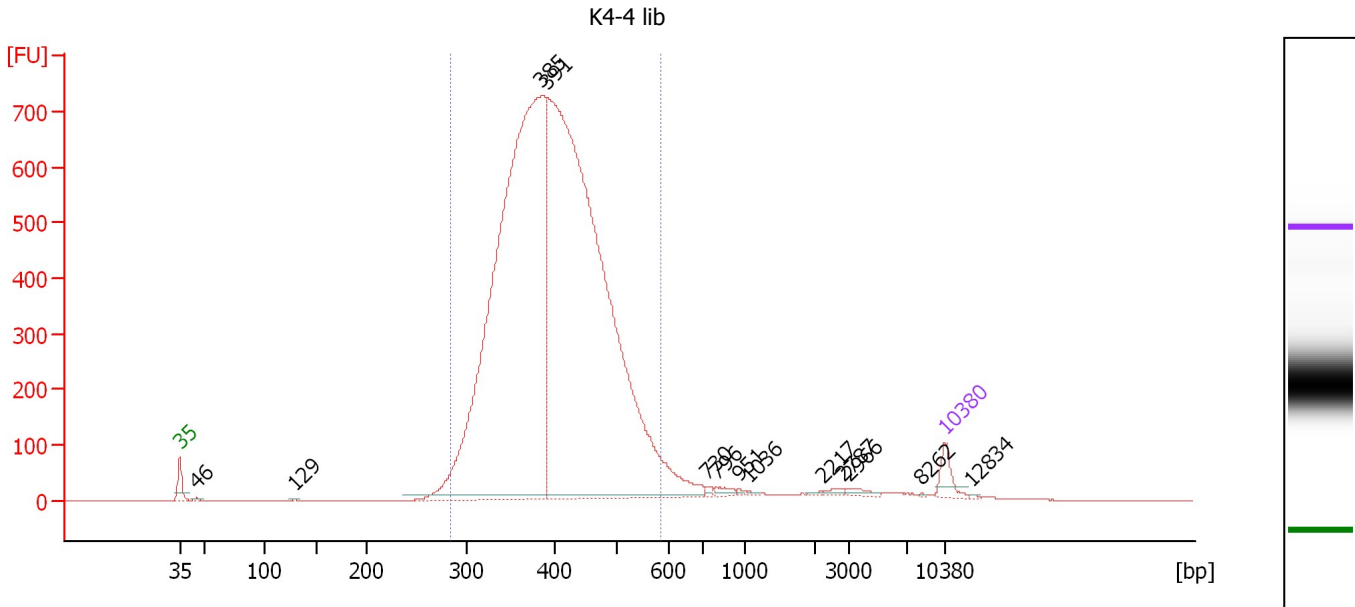
Region table for sample 9 : K4-3 lib

From [bp]	To [bp]	Average Size [bp]	Molarity [pmol/l]	Conc. [pg/μl]	Corr. Area	% of Total	Size distribution in CV [%]	Color
305	1,000	513	4,396.5	1,394.31	1,064.2	92	22.7	Blue

Assay Class: High Sensitivity DNA Assay
 Data Path: C:\...ents and Settings\Bioanalyzer\2012-08-09\2012-08-09_001.xad

Created: 8/9/2012 8:56:41 AM
 Modified: 8/9/2012 10:24:34 AM

Electropherogram Summary Continued ...



Overall Results for sample 10 : K4-4 lib

Number of peaks found: 13 Corr. Area 1: 10,743.5
 Noise: 0.2

Peak table for sample 10 : K4-4 lib

Peak	Size [bp]	Conc. [pg/μl]	Molarity [pmol/l]	Observations
1	35	125.00	5,411.3	Lower Marker
2	46	11.63	386.7	
3	129	5.77	67.9	
4	385	5,247.24	20,666.0	
5	391	5,978.23	23,143.3	
6	730	12.54	26.0	
7	796	26.15	49.7	
8	951	6.57	10.5	
9	1,036	6.79	9.9	
10	2,217	5.34	3.7	
11	2,787	15.54	8.5	
12	2,966	24.08	12.3	
13	8,262	2.48	0.5	
14	10,380	75.00	10.9	Upper Marker
15	12,834	0.00	0.0	

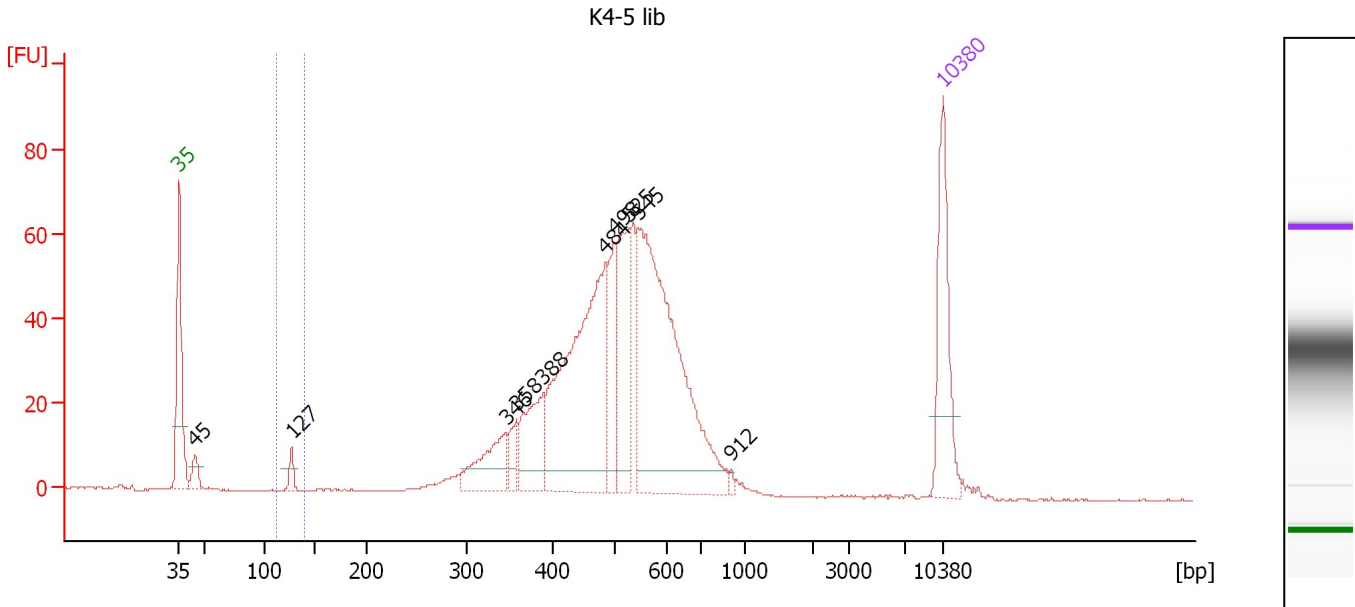
Region table for sample 10 : K4-4 lib

From [bp]	To [bp]	Average Size [bp]	Molarity [pmol/l]	Conc. [pg/μl]	Corr. Area	% of Total	Size distribution in CV [%]	Color
283	586	406	42,981.3	11,184.74	10,743.5	94	15.4	Blue

Assay Class: High Sensitivity DNA Assay
 Data Path: C:\...ents and Settings\Bioanalyzer\2012-08-09\2012-08-09_001.xad

Created: 8/9/2012 8:56:41 AM
 Modified: 8/9/2012 10:24:34 AM

Electropherogram Summary Continued ...



Overall Results for sample 11 : K4-5 lib

Number of peaks found: 10 Corr. Area 1: 8.0
 Noise: 0.2

Peak table for sample 11 : K4-5 lib

Peak	Size [bp]	Conc. [pg/μl]	Molarity [pmol/l]	Observations
1	35	125.00	5,411.3	Lower Marker
2	45	19.50	662.2	
3	127	13.62	162.6	
4	346	60.30	263.8	
5	358	21.30	90.2	
6	388	71.84	280.3	
7	484	290.35	908.4	
8	498	60.39	183.7	
9	525	101.49	292.7	
10	545	348.19	968.5	
11	912	3.14	5.2	
12	10,380	75.00	10.9	Upper Marker

Region table for sample 11 : K4-5 lib

From [bp]	To [bp]	Average Size [bp]	Molarity [pmol/l]	Conc. [pg/μl]	Corr. Area	% of Total	Size distribution in CV [%]	Color
113	139	127	150.9	12.63	8.0	1	1.4	Blue

Assay Class: High Sensitivity DNA Assay
Data Path: C:\...ents and Settings\Bioanalyzer\2012-08-09\2012-08-09_001.xad

Created: 8/9/2012 8:56:41 AM
Modified: 8/9/2012 10:24:34 AM

Gel Image

