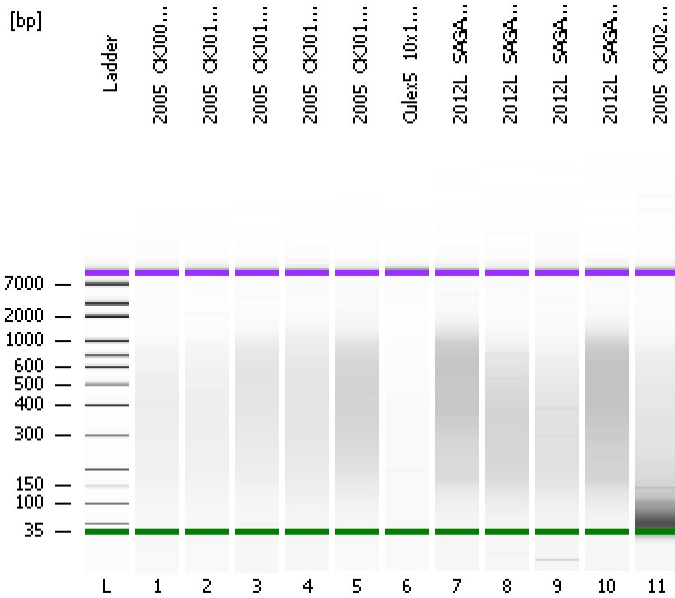


Assay Class: High Sensitivity DNA Assay
Data Path: C:\...ents and Settings\Bioanalyzer\2012-08-09\2012-08-09_003.xad

Created: 8/9/2012 11:53:12 AM
Modified: 8/9/2012 12:34:35 PM

Electrophoresis File Run Summary



Instrument Information:

Instrument Name: DE13701086 Firmware: C.01.069
Serial#: DE13701086 Type: G2938B

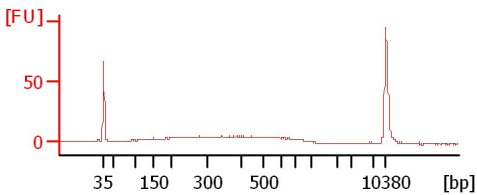
Assay Information:

Assay Origin Path: C:\Program Files\Agilent\2100 bioanalyzer\2100 expert\assays\dsDNA\High Sensitivity DNA.xsy
Assay Class: High Sensitivity DNA Assay
Version: 1.03
Assay Comments: Copyright © 2003-2010 Agilent Technologies

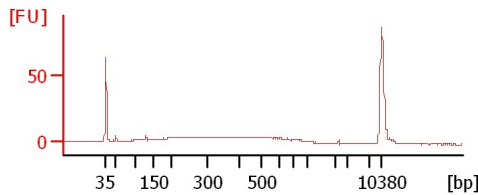
Chip Information:

Chip Lot #:
Reagent Kit Lot #:
Chip Comments:

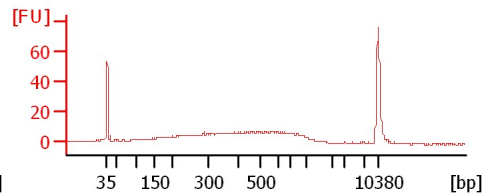
2005_OKJ003_8x15:90



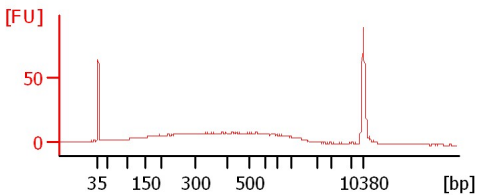
2005_OKJ013_8x15:90



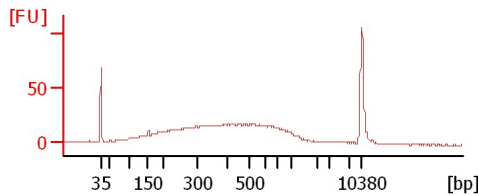
2005_OKJ014_8x15:90



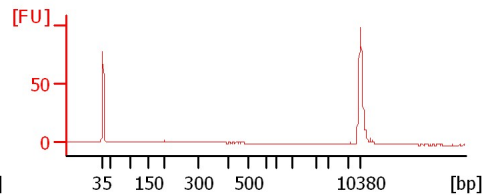
2005_OKJ019_8x15:90



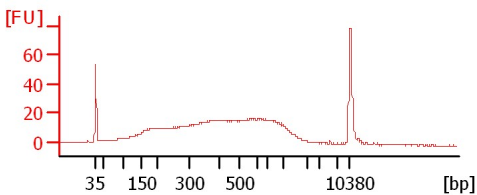
2005_OKJ017_8x15:90



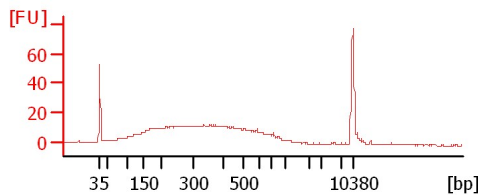
Culex5_10x15:90



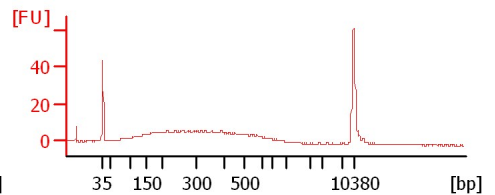
2012L_SAGA105_8x15:90



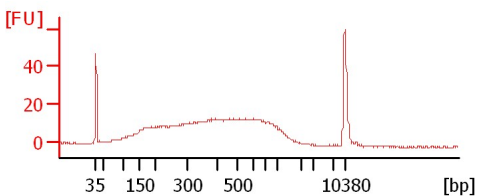
2012L_SAGA106_8x15:90



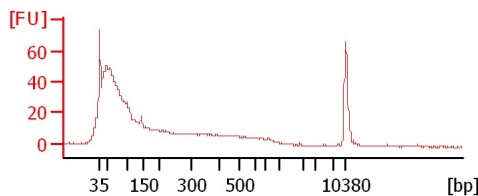
2012L_SAGA130_8x15:90



2012L_SAGA131_8x15:90



2005_OKJ025_8x15:90



Assay Class: High Sensitivity DNA Assay
Data Path: C:\...ents and Settings\Bioanalyzer\2012-08-09\2012-08-09_003.xad

Created: 8/9/2012 11:53:12 AM
Modified: 8/9/2012 12:34:35 PM

Electrophoresis File Run Summary (Chip Summary)

Sample Name	Sample Comment	Rest. Digest	Status	Observation	Result Label	Result Color
2005_OKJ003_8x15:90		<input type="checkbox"/>	✓			
2005_OKJ013_8x15:90		<input type="checkbox"/>	✓			
2005_OKJ014_8x15:90		<input type="checkbox"/>	✓			
2005_OKJ019_8x15:90		<input type="checkbox"/>	✓			
2005_OKJ017_8x15:90		<input type="checkbox"/>	✓			
Culex5_10x15:90		<input type="checkbox"/>	✓			
2012L_SAGA105_8x15:90		<input type="checkbox"/>	✓			
2012L_SAGA106_8x15:90		<input type="checkbox"/>	✓			
2012L_SAGA130_8x15:90		<input type="checkbox"/>	✓			
2012L_SAGA131_8x15:90		<input type="checkbox"/>	✓			
2005_OKJ025_8x15:90		<input type="checkbox"/>	✓			
Ladder		<input type="checkbox"/>	✓			

Chip Lot #

Reagent Kit Lot #

Chip Comments :

Assay Class: High Sensitivity DNA Assay
Data Path: C:\...ents and Settings\Bioanalyzer\2012-08-09\2012-08-09_003.xad

Created: 8/9/2012 11:53:12 AM
Modified: 8/9/2012 12:34:35 PM

Electrophoresis Assay Details

General Analysis Settings

Number of Available Sample and Ladder Wells (Max.) : 12
Minimum Visible Range [s] : 32
Maximum Visible Range [s] : 138
Start Analysis Time Range [s] : 33
End Analysis Time Range [s] : 137.5
Ladder Concentration [pg/μl] : 1950
Uses Standard Area for Ladder Fragments
Lower Marker Concentration [pg/μl] : 125
Upper Marker Concentration [pg/μl] : 75
Used Upper Marker for Quantitation
Standard Curve Fit is Point to Point
Show Data Aligned to Lower and Upper Marker

Integrator Settings

Integration Start Time [s] : 33.05
Integration End Time [s] : 137
Slope Threshold : 0.8
Height Threshold [FU] : 5
Area Threshold : 0.1
Width Threshold [s] : 0.6
Baseline Plateau [s] : 0.5

Filter Settings

Filter Width [s] : 0.5
Polynomial Order : 4

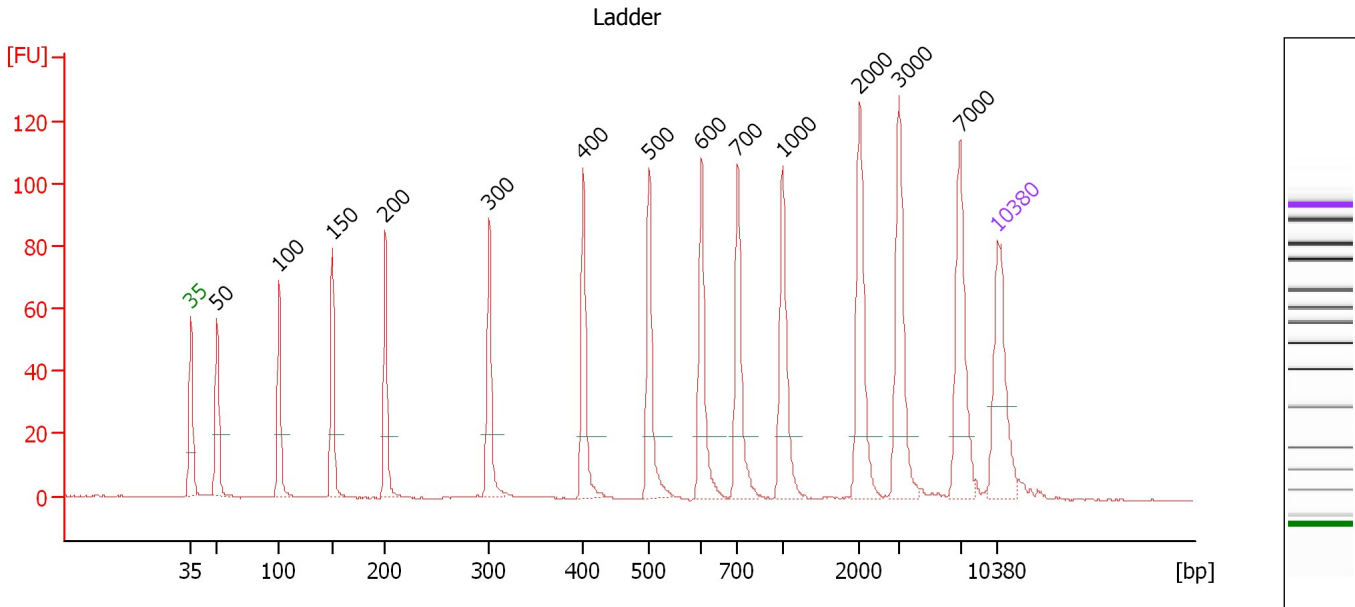
Ladder

Ladder Peak	Size	Area
1	35	160
2	50	210
3	100	208
4	150	221
5	200	242
6	300	270
7	400	305
8	500	306
9	600	336
10	700	321
11	1000	366
12	2000	413
13	3000	411
14	7000	400
15	10380	214

Assay Class: High Sensitivity DNA Assay
 Data Path: C:\...ents and Settings\Bioanalyzer\2012-08-09\2012-08-09_003.xad

Created: 8/9/2012 11:53:12 AM
 Modified: 8/9/2012 12:34:35 PM

Electropherogram Summary



Overall Results for Ladder

Noise: 0.1

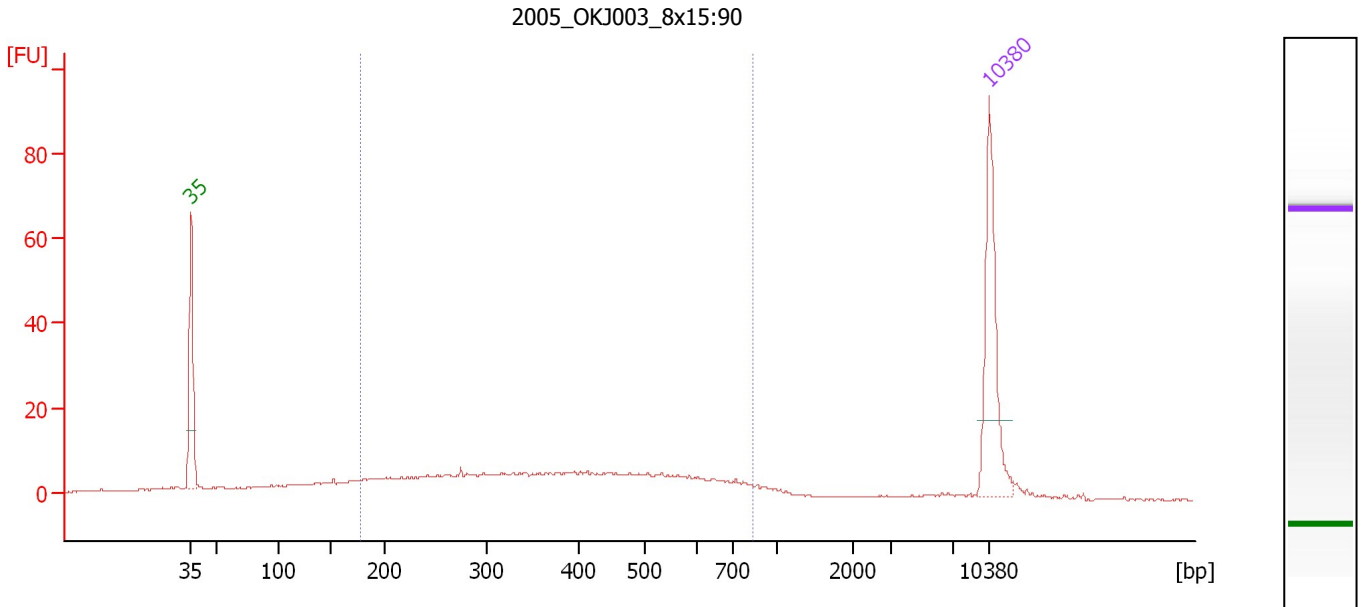
Peak table for Ladder

Peak	Size [bp]	Conc. [pg/μl]	Molarity [pmol/l]	Observations
1	35	125.00	5,411.3	Lower Marker
2	50	150.00	4,545.5	Ladder Peak
3	100	150.00	2,272.7	Ladder Peak
4	150	150.00	1,515.2	Ladder Peak
5	200	150.00	1,136.4	Ladder Peak
6	300	150.00	757.6	Ladder Peak
7	400	150.00	568.2	Ladder Peak
8	500	150.00	454.5	Ladder Peak
9	600	150.00	378.8	Ladder Peak
10	700	150.00	324.7	Ladder Peak
11	1,000	150.00	227.3	Ladder Peak
12	2,000	150.00	113.6	Ladder Peak
13	3,000	150.00	75.8	Ladder Peak
14	7,000	150.00	32.5	Ladder Peak
15	10,380	75.00	10.9	Upper Marker

Assay Class: High Sensitivity DNA Assay
 Data Path: C:\...ents and Settings\Bioanalyzer\2012-08-09\2012-08-09_003.xad

Created: 8/9/2012 11:53:12 AM
 Modified: 8/9/2012 12:34:35 PM

Electropherogram Summary Continued ...



Overall Results for sample 1 : 2005 OKJ003 8x15:90

Number of peaks found: 0 Corr. Area 1: 216.2
 Noise: 0.2

Peak table for sample 1 : 2005 OKJ003 8x15:90

Peak	Size [bp]	Conc. [pg/μl]	Molarity [pmol/l]	Observations
1	35	125.00	5,411.3	Lower Marker
2	10,380	75.00	10.9	Upper Marker

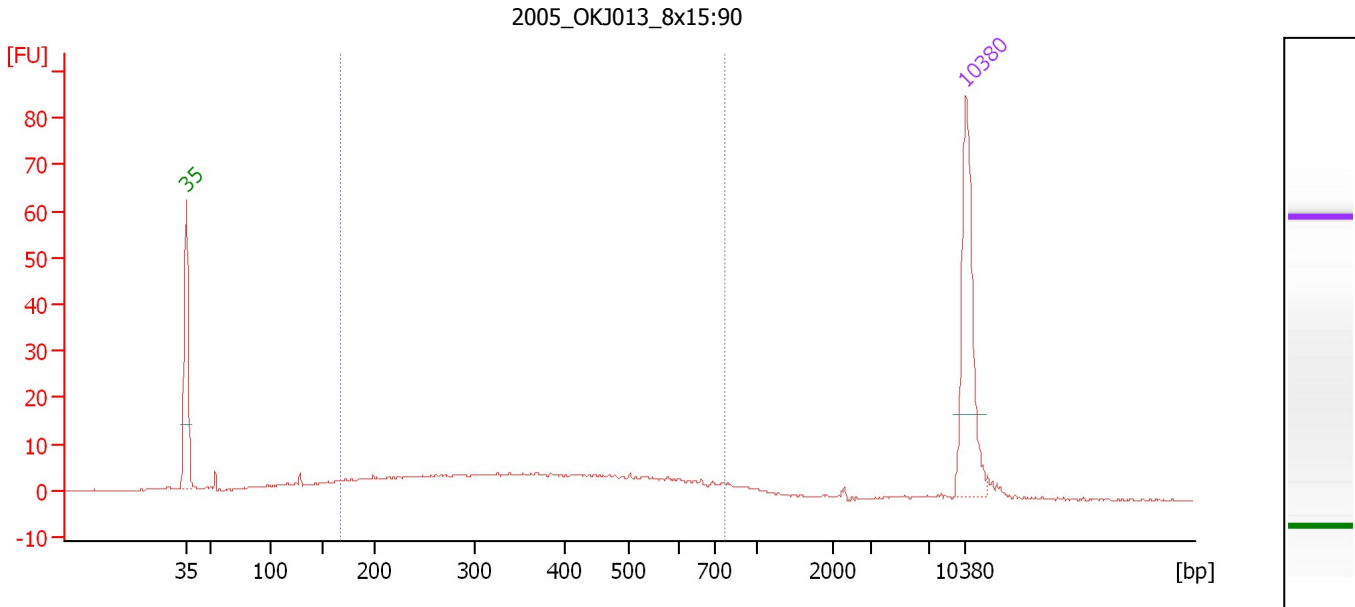
Region table for sample 1 : 2005 OKJ003 8x15:90

From [bp]	To [bp]	Average Size [bp]	Molarity [pmol/l]	Conc. [pg/μl]	Corr. Area	% of Total	Size distribution in CV [%]	Color
178	842	405	1,298.1	281.87	216.2	72	36.9	Blue

Assay Class: High Sensitivity DNA Assay
 Data Path: C:\...ents and Settings\Bioanalyzer\2012-08-09\2012-08-09_003.xad

Created: 8/9/2012 11:53:12 AM
 Modified: 8/9/2012 12:34:35 PM

Electropherogram Summary Continued ...



Overall Results for sample 2 : 2005 OKJ013 8x15:90

Number of peaks found: 0 Corr. Area 1: 182.5
 Noise: 0.1

Peak table for sample 2 : 2005 OKJ013 8x15:90

Peak	Size [bp]	Conc. [pg/μl]	Molarity [pmol/l]	Observations
1	35	125.00	5,411.3	Lower Marker
2	10,380	75.00	10.9	Upper Marker

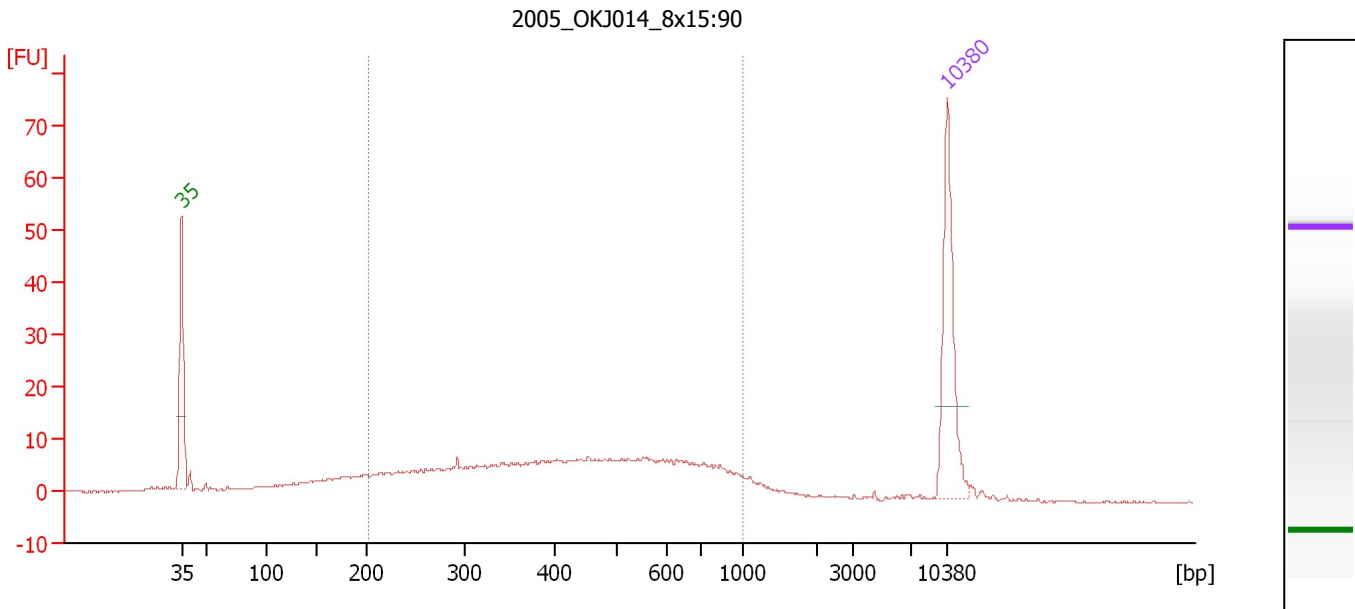
Region table for sample 2 : 2005 OKJ013 8x15:90

From [bp]	To [bp]	Average Size [bp]	Molarity [pmol/l]	Conc. [pg/μl]	Corr. Area	% of Total	Size distribution in CV [%]	Color
166	778	387	1,161.0	239.50	182.5	74	36.8	Blue

Assay Class: High Sensitivity DNA Assay
 Data Path: C:\...ents and Settings\Bioanalyzer\2012-08-09\2012-08-09_003.xad

Created: 8/9/2012 11:53:12 AM
 Modified: 8/9/2012 12:34:35 PM

Electropherogram Summary Continued ...



Overall Results for sample 3 : 2005 OKJ014 8x15:90

Number of peaks found: 0 Corr. Area 1: 267.8
 Noise: 0.1

Peak table for sample 3 : 2005 OKJ014 8x15:90

Peak	Size [bp]	Conc. [pg/μl]	Molarity [pmol/l]	Observations
1	35	125.00	5,411.3	Lower Marker
2	10,380	75.00	10.9	Upper Marker

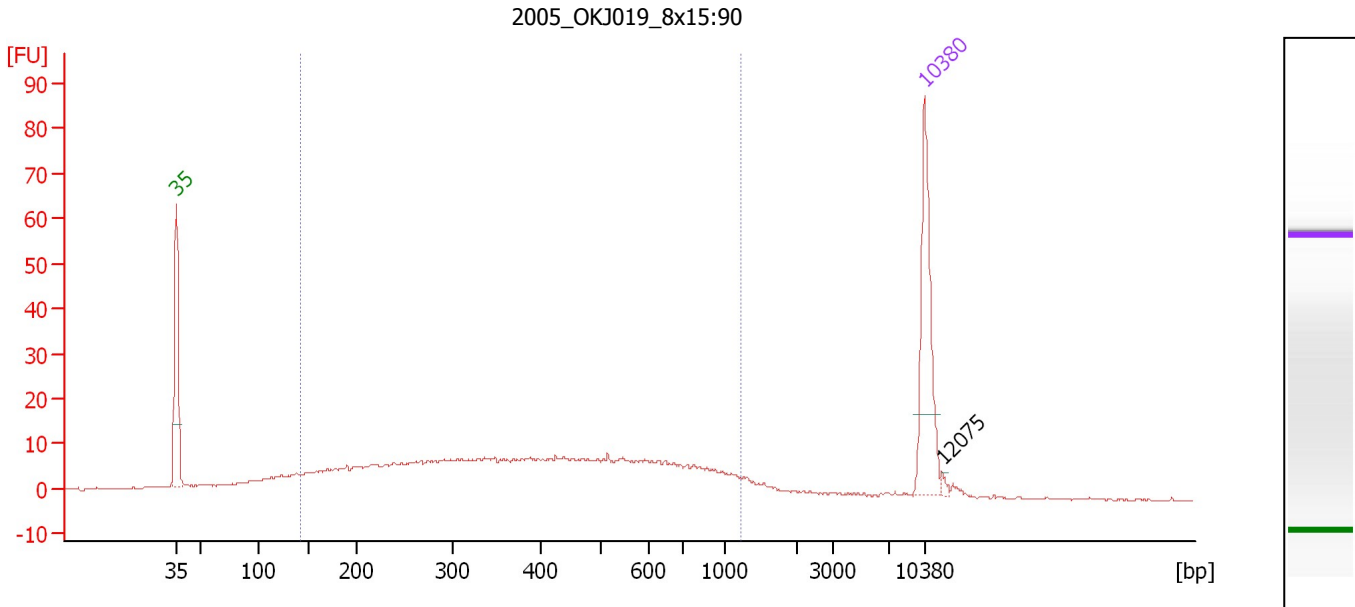
Region table for sample 3 : 2005 OKJ014 8x15:90

From [bp]	To [bp]	Average Size [bp]	Molarity [pmol/l]	Conc. [pg/μl]	Corr. Area	% of Total	Size distribution in CV [%]	Color
203	1,000	465	1,617.6	401.65	267.8	75	38.9	Blue

Assay Class: High Sensitivity DNA Assay
 Data Path: C:\...ents and Settings\Bioanalyzer\2012-08-09\2012-08-09_003.xad

Created: 8/9/2012 11:53:12 AM
 Modified: 8/9/2012 12:34:35 PM

Electropherogram Summary Continued ...



Overall Results for sample 4 : 2005 OKJ019 8x15:90

Number of peaks found: 1 Corr. Area 1: 376.1
 Noise: 0.2

Peak table for sample 4 : 2005 OKJ019 8x15:90

Peak	Size [bp]	Conc. [pg/μl]	Molarity [pmol/l]	Observations
1	35	125.00	5,411.3	Lower Marker
2	10,380	75.00	10.9	Upper Marker
3	12,075	0.00	0.0	

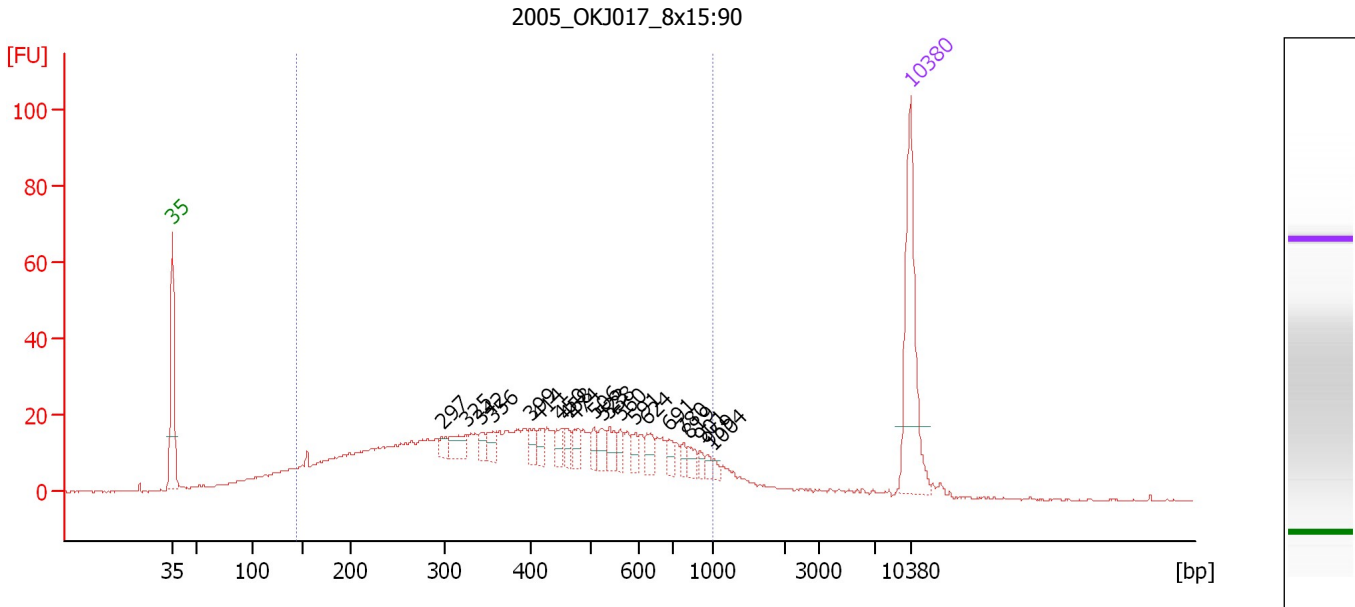
Region table for sample 4 : 2005 OKJ019 8x15:90

From [bp]	To [bp]	Average Size [bp]	Molarity [pmol/l]	Conc. [pg/μl]	Corr. Area	% of Total	Size distribution in CV [%]	Color
142	1,230	440	2,606.7	538.47	376.1	82	49.6	Blue

Assay Class: High Sensitivity DNA Assay
 Data Path: C:\...ents and Settings\Bioanalyzer\2012-08-09\2012-08-09_003.xad

Created: 8/9/2012 11:53:12 AM
 Modified: 8/9/2012 12:34:35 PM

Electropherogram Summary Continued ...



Overall Results for sample 5 : 2005 OKJ017 8x15:90

Number of peaks found: 21 Corr. Area 1: 762.7
 Noise: 0.1

Peak table for sample 5 : 2005 OKJ017 8x15:90

Peak	Size [bp]	Conc. [pg/μl]	Molarity [pmol/l]	Observations
1	35	125.00	5,411.3	Lower Marker
2	297	7.44	37.9	
3	325	17.95	83.8	
4	342	8.67	38.4	
5	356	10.10	43.0	
6	399	10.42	39.6	
7	414	8.65	31.7	
8	450	9.94	33.4	
9	458	9.49	31.4	
10	474	10.15	32.4	
11	506	8.75	26.2	
12	523	10.82	31.3	
13	538	12.48	35.2	
14	560	8.24	22.3	
15	591	7.60	19.5	
16	624	11.04	26.8	
17	691	7.91	17.3	
18	780	5.93	11.5	
19	819	7.32	13.5	
20	901	4.39	7.4	
21	959	3.66	5.8	
22	1,004	3.21	4.8	
23	10,380	75.00	10.9	Upper Marker

Assay Class: High Sensitivity DNA Assay
Data Path: C:\...ents and Settings\Bioanalyzer\2012-08-09\2012-08-09_003.xad

Created: 8/9/2012 11:53:12 AM
Modified: 8/9/2012 12:34:35 PM

Electropherogram Summary Continued ...

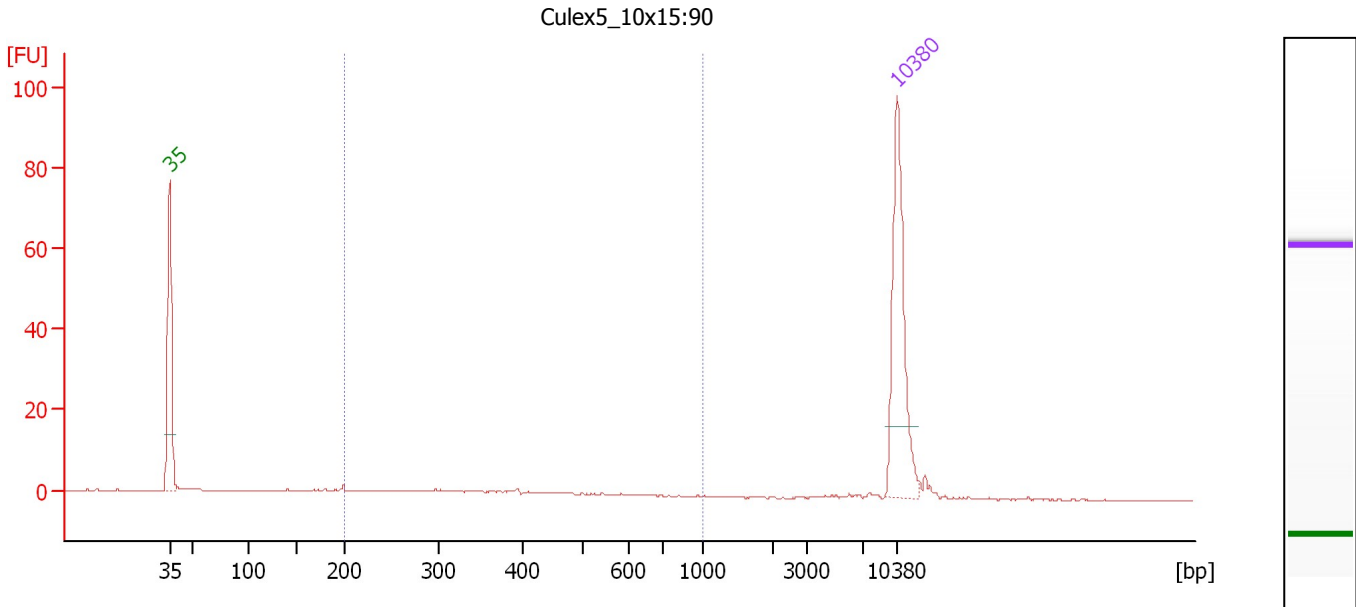
... Region table for sample 5 : 2005_OKJ017_8x15:90

From [bp]	To [bp]	Average Size [bp]	Molarity [pmol/l]	Conc. [pg/μl]	Corr. Area	% of Total	Size distribution in CV [%]	Color
145	1,000	428	4,164.2	878.73	762.7	84	43.5	■

Assay Class: High Sensitivity DNA Assay
 Data Path: C:\...ents and Settings\Bioanalyzer\2012-08-09\2012-08-09_003.xad

Created: 8/9/2012 11:53:12 AM
 Modified: 8/9/2012 12:34:35 PM

Electropherogram Summary Continued ...



Overall Results for sample 6 : Culex5 10x15:90

Number of peaks found: 0 Corr. Area 1: 19.0
 Noise: 0.1

Peak table for sample 6 : Culex5 10x15:90

Peak	Size [bp]	Conc. [pg/µl]	Molarity [pmol/l]	Observations
1	35	125.00	5,411.3	Lower Marker
2	10,380	75.00	10.9	Upper Marker

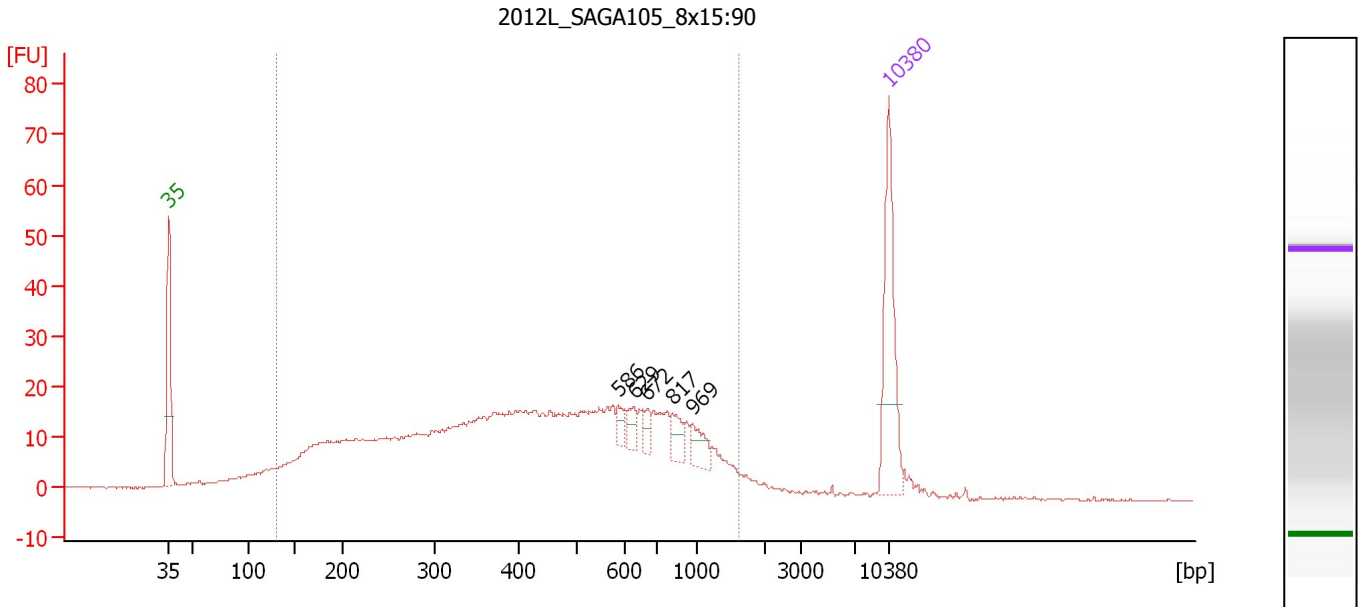
Region table for sample 6 : Culex5 10x15:90

From [bp]	To [bp]	Average Size [bp]	Molarity [pmol/l]	Conc. [pg/µl]	Corr. Area	% of Total	Size distribution in CV [%]	Color
200	1,000	354	95.7	19.89	19.0	48	30.5	Blue

Assay Class: High Sensitivity DNA Assay
 Data Path: C:\...ents and Settings\Bioanalyzer\2012-08-09\2012-08-09_003.xad

Created: 8/9/2012 11:53:12 AM
 Modified: 8/9/2012 12:34:35 PM

Electropherogram Summary Continued ...



Overall Results for sample 7 : 2012L_SAGA105_8x15:90

Number of peaks found: 5 Corr. Area 1: 745.7
 Noise: 0.1

Peak table for sample 7 : 2012L_SAGA105_8x15:90

Peak	Size [bp]	Conc. [pg/μl]	Molarity [pmol/l]	Observations
1	35	125.00	5,411.3	Lower Marker
2	586	8.91	23.0	
3	629	11.21	27.0	
4	672	9.92	22.4	
5	817	15.95	29.6	
6	969	17.73	27.7	
7	10,380	75.00	10.9	Upper Marker

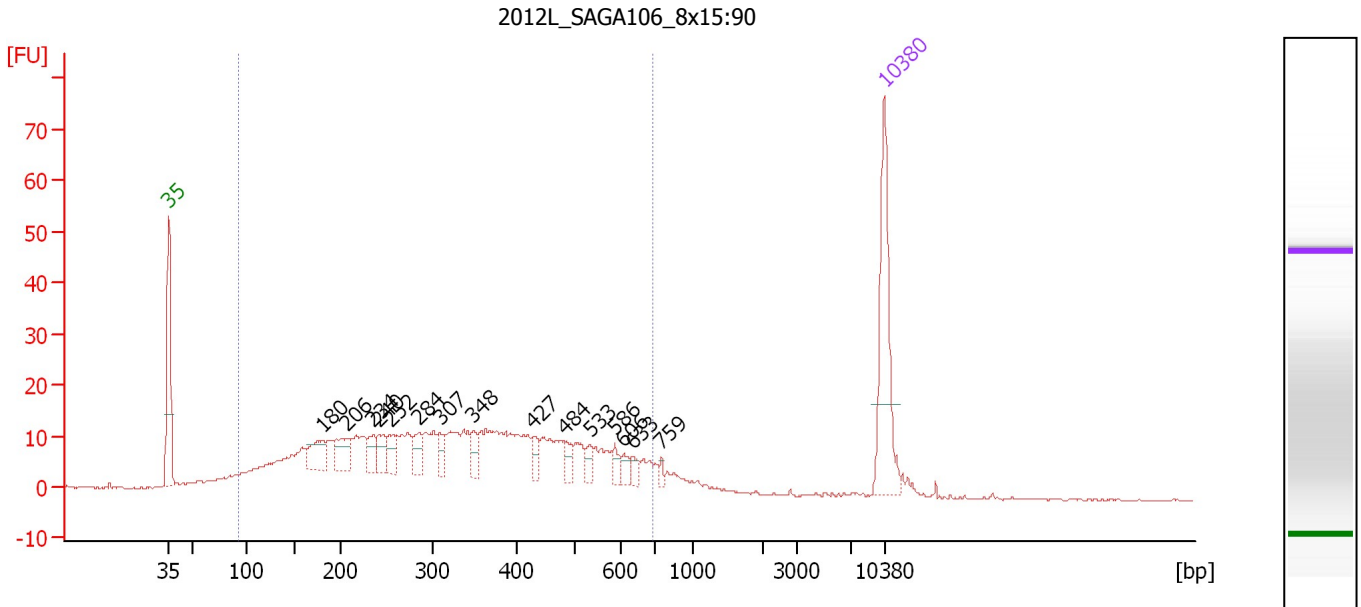
Region table for sample 7 : 2012L_SAGA105_8x15:90

From [bp]	To [bp]	Average Size [bp]	Molarity [pmol/l]	Conc. [pg/μl]	Corr. Area	% of Total	Size distribution in CV [%]	Color
129	1,606	494	5,274.5	1,135.21	745.7	92	56.1	Blue

Assay Class: High Sensitivity DNA Assay
 Data Path: C:\...ents and Settings\Bioanalyzer\2012-08-09\2012-08-09_003.xad

Created: 8/9/2012 11:53:12 AM
 Modified: 8/9/2012 12:34:35 PM

Electropherogram Summary Continued ...



Overall Results for sample 8 : 2012L_SAGA106_8x15:90

Number of peaks found: 15 Corr. Area 1: 546.5
 Noise: 0.1

Peak table for sample 8 : 2012L_SAGA106_8x15:90

Peak	Size [bp]	Conc. [pg/μl]	Molarity [pmol/l]	Observations
1	35	125.00	5,411.3	Lower Marker
2	180	33.54	282.7	
3	206	32.36	238.0	
4	234	17.07	110.3	
5	240	20.64	130.2	
6	252	18.23	109.4	
7	284	17.00	90.8	
8	307	13.51	66.6	
9	348	14.25	62.1	
10	427	10.93	38.8	
11	484	10.94	34.2	
12	533	9.65	27.4	
13	586	9.63	24.9	
14	606	7.44	18.6	
15	633	6.47	15.5	
16	759	4.18	8.3	
17	10,380	75.00	10.9	Upper Marker

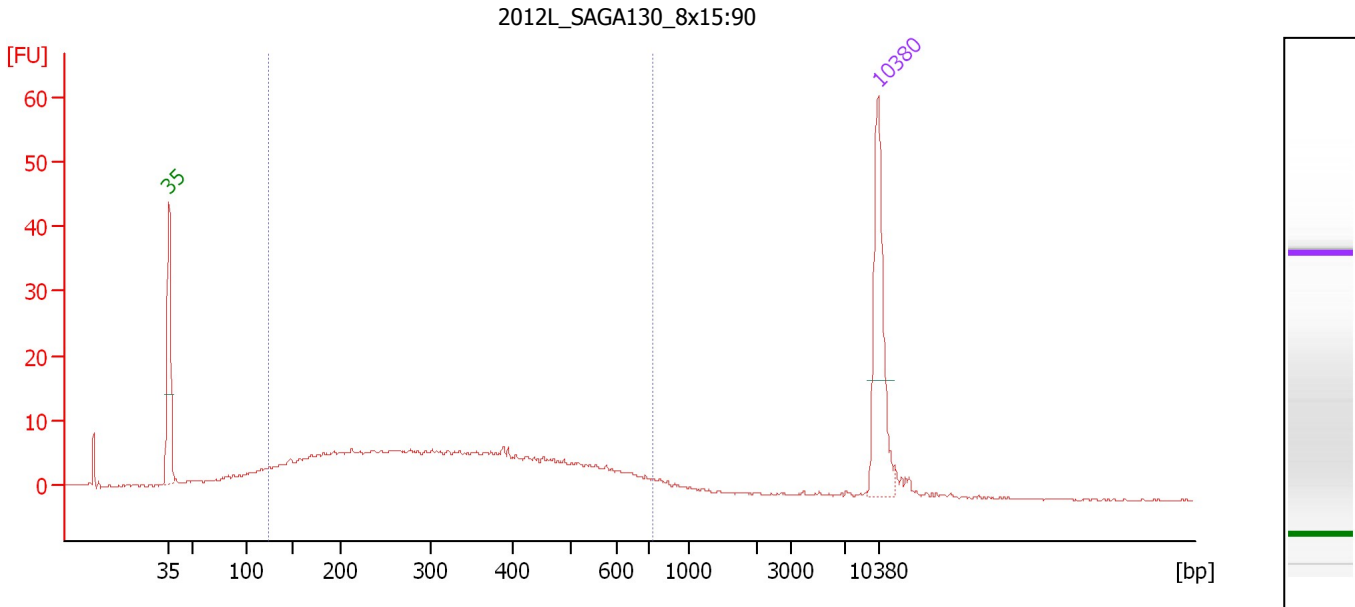
Region table for sample 8 : 2012L_SAGA106_8x15:90

From [bp]	To [bp]	Average Size [bp]	Molarity [pmol/l]	Conc. [pg/μl]	Corr. Area	% of Total	Size distribution in CV [%]	Color
91	699	342	5,765.7	944.88	546.5	90	42.0	Blue

Assay Class: High Sensitivity DNA Assay
 Data Path: C:\...ents and Settings\Bioanalyzer\2012-08-09\2012-08-09_003.xad

Created: 8/9/2012 11:53:12 AM
 Modified: 8/9/2012 12:34:35 PM

Electropherogram Summary Continued ...



Overall Results for sample 9 : 2012L_SAGA130_8x15:90

Number of peaks found: 0 Corr. Area 1: 262.0
 Noise: 0.2

Peak table for sample 9 : 2012L_SAGA130_8x15:90

Peak	Size [bp]	Conc. [pg/μl]	Molarity [pmol/l]	Observations
1	35	125.00	5,411.3	Lower Marker
2	10,380	75.00	10.9	Upper Marker

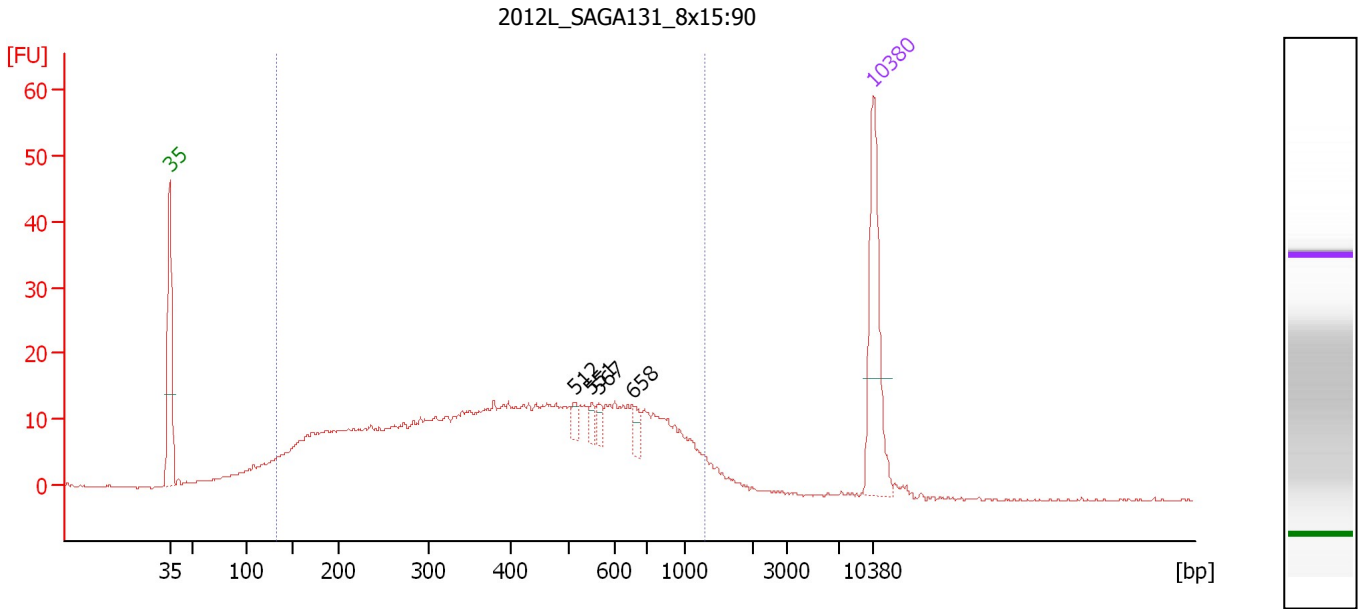
Region table for sample 9 : 2012L_SAGA130_8x15:90

From [bp]	To [bp]	Average Size [bp]	Molarity [pmol/l]	Conc. [pg/μl]	Corr. Area	% of Total	Size distribution in CV [%]	Color
123	718	339	3,092.7	529.89	262.0	85	40.5	Blue

Assay Class: High Sensitivity DNA Assay
 Data Path: C:\...ents and Settings\Bioanalyzer\2012-08-09\2012-08-09_003.xad

Created: 8/9/2012 11:53:12 AM
 Modified: 8/9/2012 12:34:35 PM

Electropherogram Summary Continued ...



Overall Results for sample 10 : 2012L_SAGA131_8x15:90

Number of peaks found: 4 Corr. Area 1: 607.2
 Noise: 0.1

Peak table for sample 10 : 2012L_SAGA131_8x15:90

Peak	Size [bp]	Conc. [pg/μl]	Molarity [pmol/l]	Observations
1	35	125.00	5,411.3	Lower Marker
2	512	7.14	21.1	
3	551	7.52	20.7	
4	567	7.76	20.7	
5	658	10.72	24.7	
6	10,380	75.00	10.9	Upper Marker

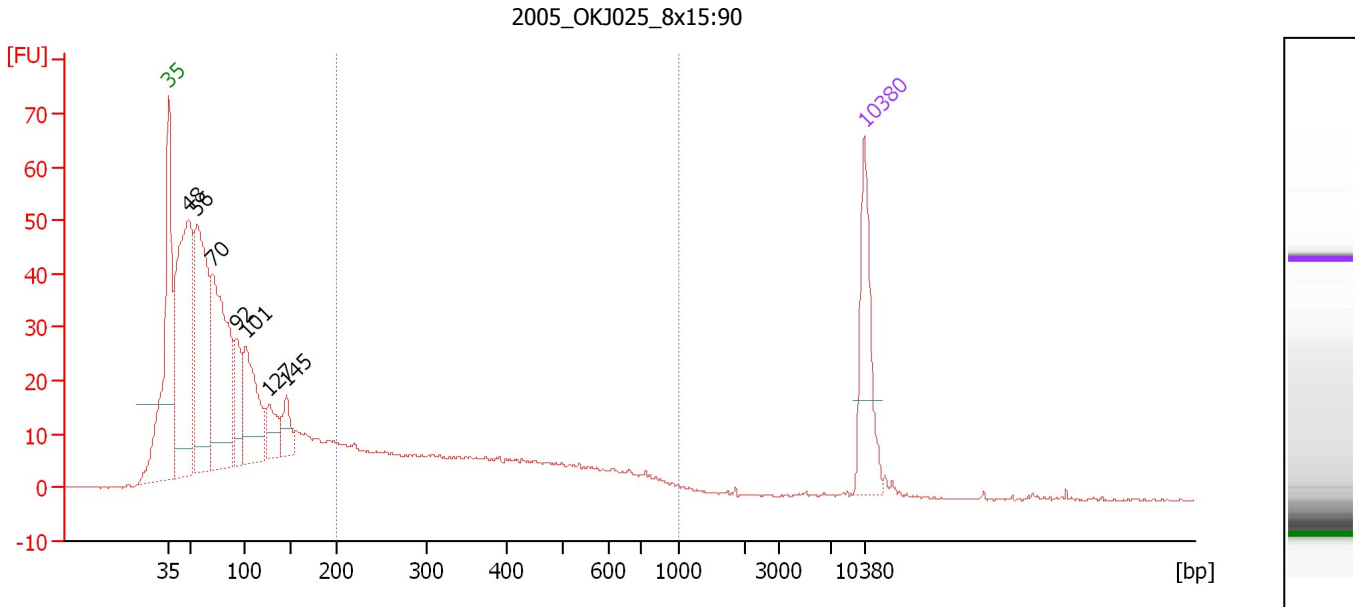
Region table for sample 10 : 2012L_SAGA131_8x15:90

From [bp]	To [bp]	Average Size [bp]	Molarity [pmol/l]	Conc. [pg/μl]	Corr. Area	% of Total	Size distribution in CV [%]	Color
131	1,308	451	5,398.6	1,105.38	607.2	91	50.9	Blue

Assay Class: High Sensitivity DNA Assay
 Data Path: C:\...ents and Settings\Bioanalyzer\2012-08-09\2012-08-09_003.xad

Created: 8/9/2012 11:53:12 AM
 Modified: 8/9/2012 12:34:35 PM

Electropherogram Summary Continued ...



Overall Results for sample 11 : 2005_OKJ025_8x15:90

Number of peaks found: 7 Corr. Area 1: 264.3
 Noise: 0.3

Peak table for sample 11 : 2005_OKJ025_8x15:90

Peak	Size [bp]	Conc. [pg/μl]	Molarity [pmol/l]	Observations
1	35	125.00	5,411.3	Lower Marker
2	48	409.50	12,888.4	
3	56	320.04	8,685.0	
4	70	309.52	6,679.4	
5	92	81.88	1,348.1	
6	101	146.47	2,194.9	
7	127	46.69	558.6	
8	145	35.80	373.6	
9	10,380	75.00	10.9	Upper Marker

Region table for sample 11 : 2005_OKJ025_8x15:90

From [bp]	To [bp]	Average Size [bp]	Molarity [pmol/l]	Conc. [pg/μl]	Corr. Area	% of Total	Size distribution in CV [%]	Color
200	1,000	399	1,978.9	425.74	264.3	24	40.9	Blue

Assay Class: High Sensitivity DNA Assay
Data Path: C:\...ents and Settings\Bioanalyzer\2012-08-09\2012-08-09_003.xad

Created: 8/9/2012 11:53:12 AM
Modified: 8/9/2012 12:34:35 PM

Gel Image

