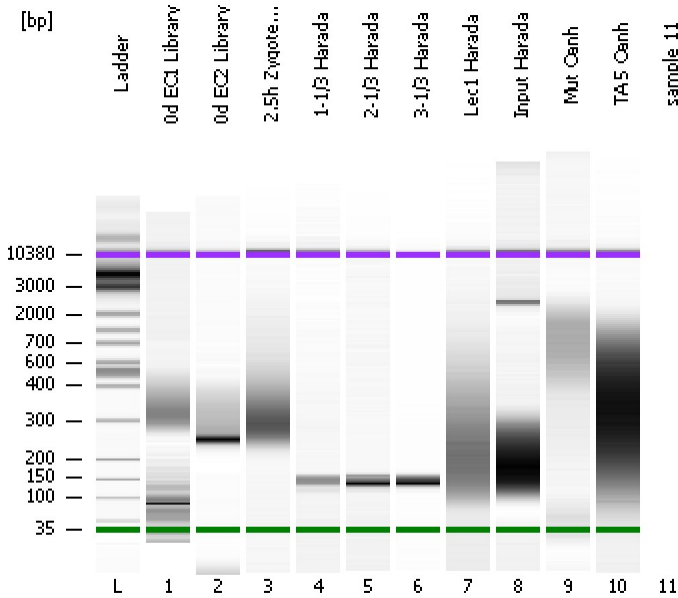


Assay Class: High Sensitivity DNA Assay
 Data Path: C:\...ents and Settings\Bioanalyzer\2012-08-09\2012-08-09_004.xad

Created: 8/9/2012 3:17:50 PM
 Modified: 8/9/2012 3:58:35 PM

Electrophoresis File Run Summary



Instrument Information:

Instrument Name: DE13701086 Firmware: C.01.069
 Serial#: DE13701086 Type: G2938B

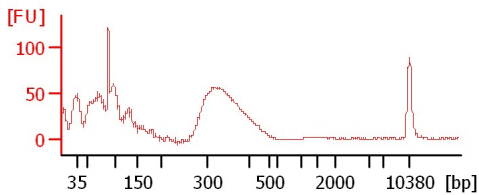
Assay Information:

Assay Origin Path: C:\Program Files\Agilent\2100 bioanalyzer\2100 expert\assays\dsDNA\High Sensitivity DNA.xsy
 Assay Class: High Sensitivity DNA Assay
 Version: 1.03
 Assay Comments: Copyright © 2003-2010 Agilent Technologies

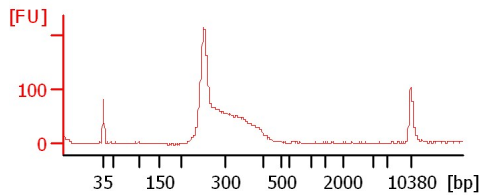
Chip Information:

Chip Lot #: Reagent Kit Lot #:
 Chip Comments:

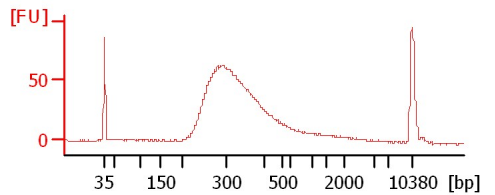
0d EC1 Library



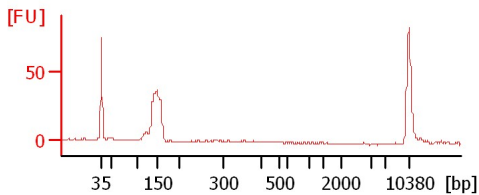
0d EC2 Library



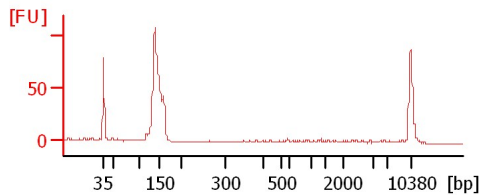
2.5h Zygote Library



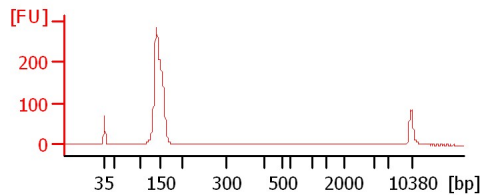
1-1/3 Harada



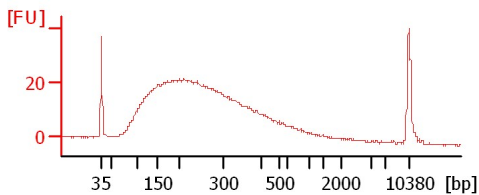
2-1/3 Harada



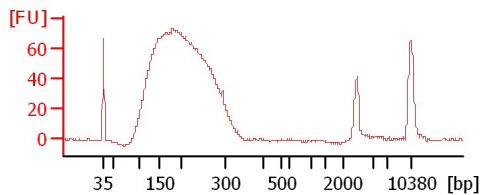
3-1/3 Harada



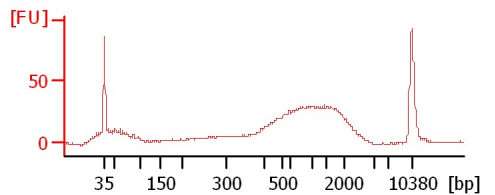
Lec1 Harada



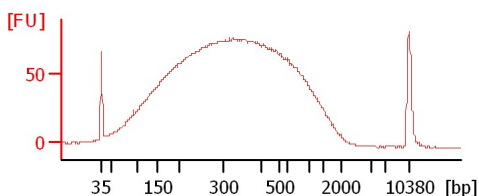
Input Harada



Mut Oanh



TA 5 Oanh



Assay Class: High Sensitivity DNA Assay
 Data Path: C:\...ents and Settings\Bioanalyzer\2012-08-09\2012-08-09_004.xad

Created: 8/9/2012 3:17:50 PM
 Modified: 8/9/2012 3:58:35 PM

Electrophoresis File Run Summary (Chip Summary)

Sample Name	Sample Comment	Rest. Digest	Status	Observation	Result Label	Result Color
0d EC1 Library		<input type="checkbox"/>	✓			
0d EC2 Library		<input type="checkbox"/>	✓			
2.5h Zygote Library		<input type="checkbox"/>	✓			
1-1/3 Harada		<input type="checkbox"/>	✓			
2-1/3 Harada		<input type="checkbox"/>	✓			
3-1/3 Harada		<input type="checkbox"/>	✓			
Lec1 Harada		<input type="checkbox"/>	✓			
Input Harada		<input type="checkbox"/>	✓			
Mut Oanh		<input type="checkbox"/>	✓			
TA 5 Oanh		<input type="checkbox"/>	✓			
sample 11		<input type="checkbox"/>				
Ladder		<input type="checkbox"/>	✓			

Chip Lot #

Reagent Kit Lot #

Chip Comments :

Assay Class: High Sensitivity DNA Assay
Data Path: C:\...ents and Settings\Bioanalyzer\2012-08-09\2012-08-09_004.xad

Created: 8/9/2012 3:17:50 PM
Modified: 8/9/2012 3:58:35 PM

Electrophoresis Assay Details

General Analysis Settings

Number of Available Sample and Ladder Wells (Max.) : 12
Minimum Visible Range [s] : 32
Maximum Visible Range [s] : 138
Start Analysis Time Range [s] : 33
End Analysis Time Range [s] : 137.5
Ladder Concentration [pg/μl] : 1950
Uses Standard Area for Ladder Fragments
Lower Marker Concentration [pg/μl] : 125
Upper Marker Concentration [pg/μl] : 75
Used Upper Marker for Quantitation
Standard Curve Fit is Point to Point
Show Data Aligned to Lower and Upper Marker

Integrator Settings

Integration Start Time [s] : 33.05
Integration End Time [s] : 137
Slope Threshold : 0.8
Height Threshold [FU] : 5
Area Threshold : 0.1
Width Threshold [s] : 0.6
Baseline Plateau [s] : 0.5

Filter Settings

Filter Width [s] : 0.5
Polynomial Order : 4

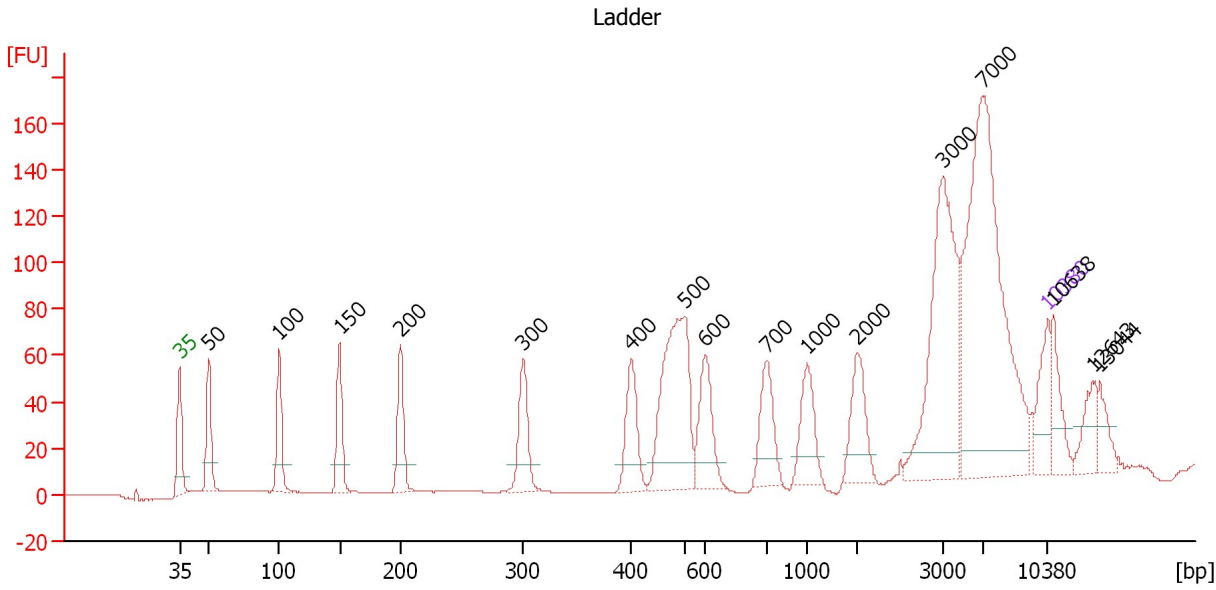
Ladder

Ladder Peak	Size	Area
1	35	160
2	50	210
3	100	208
4	150	221
5	200	242
6	300	270
7	400	305
8	500	306
9	600	336
10	700	321
11	1000	366
12	2000	413
13	3000	411
14	7000	400
15	10380	214

Assay Class: High Sensitivity DNA Assay
 Data Path: C:\...ents and Settings\Bioanalyzer\2012-08-09\2012-08-09_004.xad

Created: 8/9/2012 3:17:50 PM
 Modified: 8/9/2012 3:58:35 PM

Electropherogram Summary



Overall Results for Ladder

Noise: 0.1

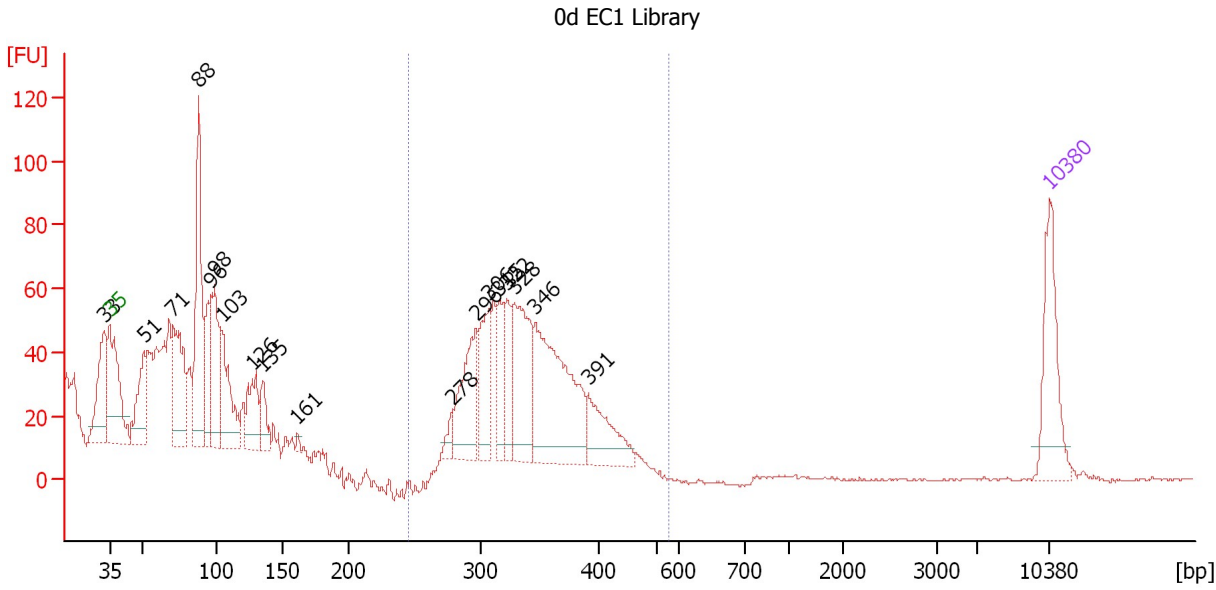
Peak table for Ladder

Peak	Size [bp]	Conc. [pg/μl]	Molarity [pmol/l]	Observations
1	35	125.00	5,411.3	Lower Marker
2	50	150.00	4,545.5	Ladder Peak
3	100	150.00	2,272.7	Ladder Peak
4	150	150.00	1,515.2	Ladder Peak
5	200	150.00	1,136.4	Ladder Peak
6	300	150.00	757.6	Ladder Peak
7	400	150.00	568.2	Ladder Peak
8	500	150.00	454.5	Ladder Peak
9	600	150.00	378.8	Ladder Peak
10	700	150.00	324.7	Ladder Peak
11	1,000	150.00	227.3	Ladder Peak
12	2,000	150.00	113.6	Ladder Peak
13	3,000	150.00	75.8	Ladder Peak
14	7,000	150.00	32.5	Ladder Peak
15	10,380	75.00	10.9	Upper Marker
16	10,638	0.00	0.0	
17	12,643	0.00	0.0	
18	13,044	0.00	0.0	

Assay Class: High Sensitivity DNA Assay
 Data Path: C:\...ents and Settings\Bioanalyzer\2012-08-09\2012-08-09_004.xad

Created: 8/9/2012 3:17:50 PM
 Modified: 8/9/2012 3:58:35 PM

Electropherogram Summary Continued ...



Overall Results for sample 1 : 0d EC1 Library

Number of peaks found: 18 Corr. Area 1: 405.5
 Noise: 0.4

Peak table for sample 1 : 0d EC1 Library

Peak	Size [bp]	Conc. [pg/μl]	Molarity [pmol/l]	Observations
1	33	0.00	0.0	
2	35	125.00	5,411.3	Lower Marker
3	51	104.36	3,076.9	
4	71	168.05	3,596.0	
5	88	233.32	4,028.5	
6	96	96.47	1,530.3	
7	98	120.76	1,860.5	
8	103	115.70	1,696.0	
9	126	75.46	904.3	
10	135	43.38	488.6	
11	161	4.85	45.7	
12	278	16.59	90.5	
13	296	109.55	560.7	
14	306	80.12	396.1	
15	315	51.24	246.4	
16	322	50.42	237.3	
17	328	144.70	667.9	
18	346	236.73	1,036.6	
19	391	73.55	284.6	
20	10,380	75.00	10.9	Upper Marker

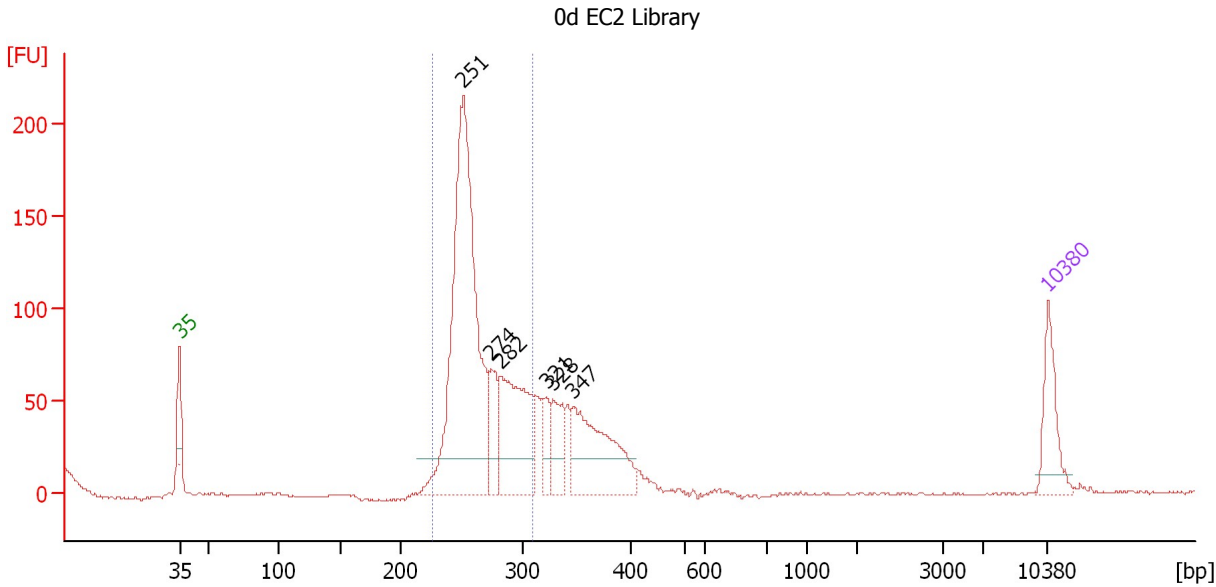
Region table for sample 1 : 0d EC1 Library

From [bp]	To [bp]	Average Size [bp]	Molarity [pmol/l]	Conc. [pg/μl]	Corr. Area	% of Total	Size distribution in CV [%]	Color
245	556	333	2,107.2	460.46	405.5	54	8.5	Blue

Assay Class: High Sensitivity DNA Assay
 Data Path: C:\...ents and Settings\Bioanalyzer\2012-08-09\2012-08-09_004.xad

Created: 8/9/2012 3:17:50 PM
 Modified: 8/9/2012 3:58:35 PM

Electropherogram Summary Continued ...



Setpoint Deviations for sample 2 : 0d EC2 Library

Height Threshold [FU] : 20

Overall Results for sample 2 : 0d EC2 Library

Number of peaks found: 6 Corr. Area 1: 834.8
 Noise: 0.5

Peak table for sample 2 : 0d EC2 Library

Peak	Size [bp]	Conc. [pg/μl]	Molarity [pmol/l]	Observations
1	35	125.00	5,411.3	Lower Marker
2	251	898.57	5,421.5	
3	274	92.16	509.5	
4	282	301.14	1,618.9	
5	321	48.73	229.7	
6	328	88.52	409.4	
7	347	258.31	1,128.6	
8	10,380	75.00	10.9	Upper Marker

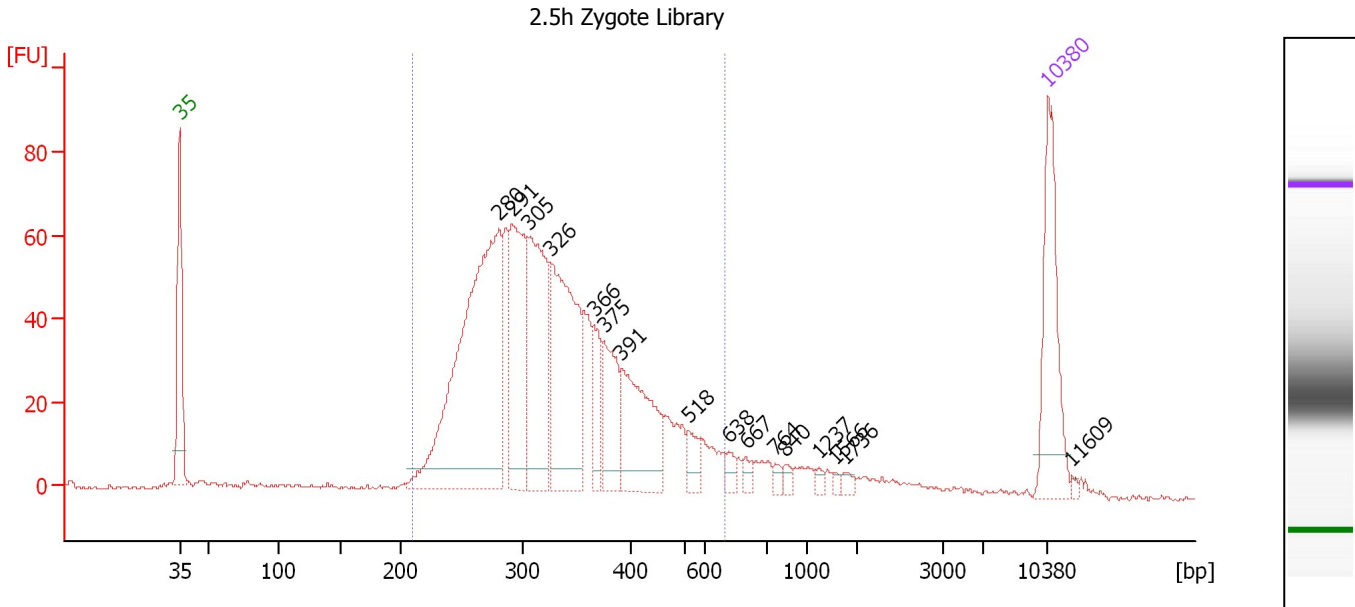
Region table for sample 2 : 0d EC2 Library

From [bp]	To [bp]	Average Size [bp]	Molarity [pmol/l]	Conc. [pg/μl]	Corr. Area	% of Total	Size distribution in CV [%]	Color
226	309	263	5,765.4	1,000.33	834.8	75	7.1	Blue

Assay Class: High Sensitivity DNA Assay
 Data Path: C:\...ents and Settings\Bioanalyzer\2012-08-09\2012-08-09_004.xad

Created: 8/9/2012 3:17:50 PM
 Modified: 8/9/2012 3:58:35 PM

Electropherogram Summary Continued ...



Overall Results for sample 3 : 2.5h Zygote Library

Number of peaks found: 16 Corr. Area 1: 1,235.1
 Noise: 0.4

Peak table for sample 3 : 2.5h Zygote Library

Peak	Size [bp]	Conc. [pg/μl]	Molarity [pmol/l]	Observations
1	35	125.00	5,411.3	Lower Marker
2	280	396.42	2,141.8	
3	291	144.49	751.9	
4	305	159.84	793.3	
5	326	190.38	885.3	
6	366	40.70	168.6	
7	375	64.84	262.1	
8	391	103.37	400.4	
9	518	17.68	51.7	
10	638	8.14	19.3	
11	667	7.01	15.9	
12	764	5.13	10.2	
13	840	5.07	9.2	
14	1,237	3.74	4.6	
15	1,566	2.69	2.6	
16	1,736	4.60	4.0	
17	10,380	75.00	10.9	Upper Marker
18	11,609	0.00	0.0	

Region table for sample 3 : 2.5h Zygote Library

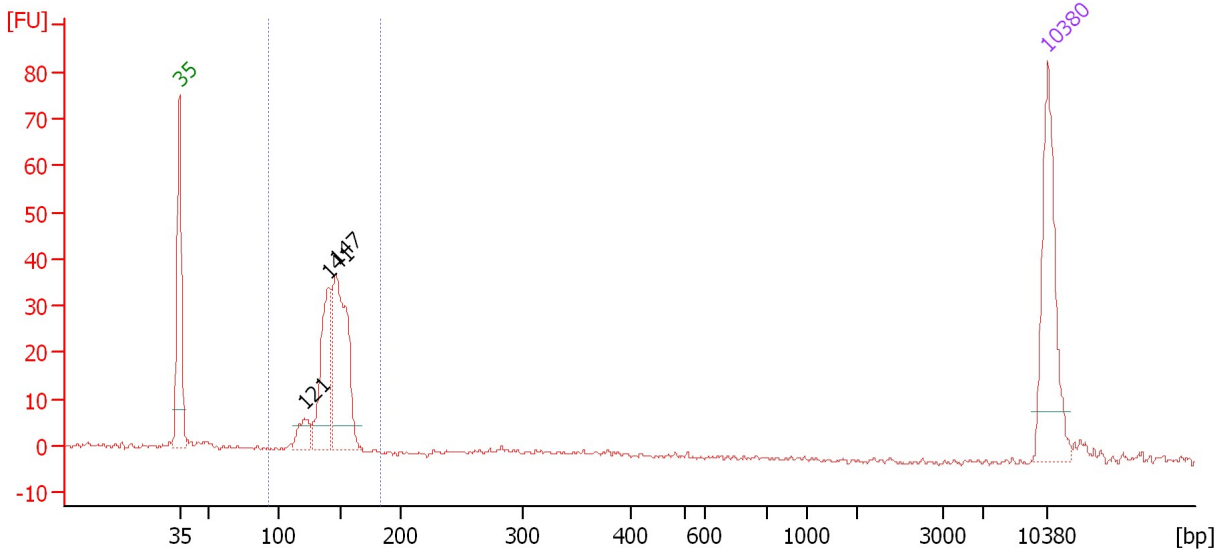
From [bp]	To [bp]	Average Size [bp]	Molarity [pmol/l]	Conc. [pg/μl]	Corr. Area	% of Total	Size distribution in CV [%]	Color
210	631	335	6,289.3	1,304.12	1,235.1	89	23.5	Blue

Assay Class: High Sensitivity DNA Assay
 Data Path: C:\...ents and Settings\Bioanalyzer\2012-08-09\2012-08-09_004.xad

Created: 8/9/2012 3:17:50 PM
 Modified: 8/9/2012 3:58:35 PM

Electropherogram Summary Continued ...

1-1/3 Harada



Overall Results for sample 4 : 1-1/3 Harada

Number of peaks found: 3 Corr. Area 1: 181.9
 Noise: 0.5

Peak table for sample 4 : 1-1/3 Harada

Peak	Size [bp]	Conc. [pg/μl]	Molarity [pmol/l]	Observations
1	35	125.00	5,411.3	Lower Marker
2	121	22.70	283.4	
3	141	99.34	1,069.8	
4	147	155.14	1,600.8	
5	10,380	75.00	10.9	Upper Marker

Region table for sample 4 : 1-1/3 Harada

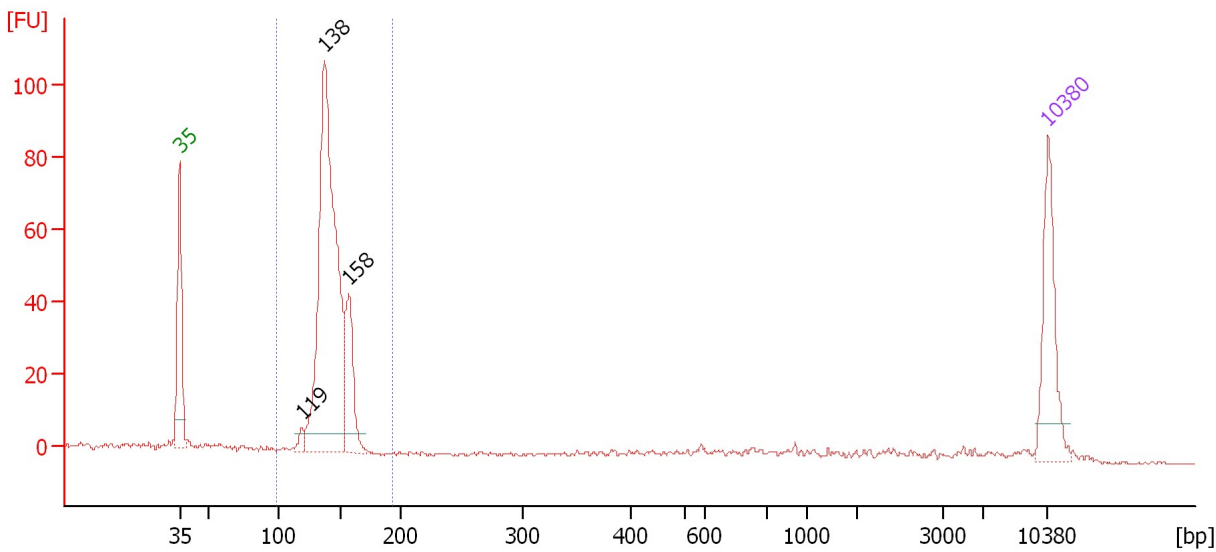
From [bp]	To [bp]	Average Size [bp]	Molarity [pmol/l]	Conc. [pg/μl]	Corr. Area	% of Total	Size distribution in CV [%]	Color
92	184	144	3,018.3	285.21	181.9	86	7.6	Blue

Assay Class: High Sensitivity DNA Assay
 Data Path: C:\...ents and Settings\Bioanalyzer\2012-08-09\2012-08-09_004.xad

Created: 8/9/2012 3:17:50 PM
 Modified: 8/9/2012 3:58:35 PM

Electropherogram Summary Continued ...

2-1/3 Harada



Overall Results for sample 5 : 2-1/3 Harada

Number of peaks found: 3 Corr. Area 1: 379.6
 Noise: 0.3

Peak table for sample 5 : 2-1/3 Harada

Peak	Size [bp]	Conc. [pg/μl]	Molarity [pmol/l]	Observations
1	35	125.00	5,411.3	Lower Marker
2	119	11.36	144.9	
3	138	541.36	5,959.4	
4	158	97.41	937.0	
5	10,380	75.00	10.9	Upper Marker

Region table for sample 5 : 2-1/3 Harada

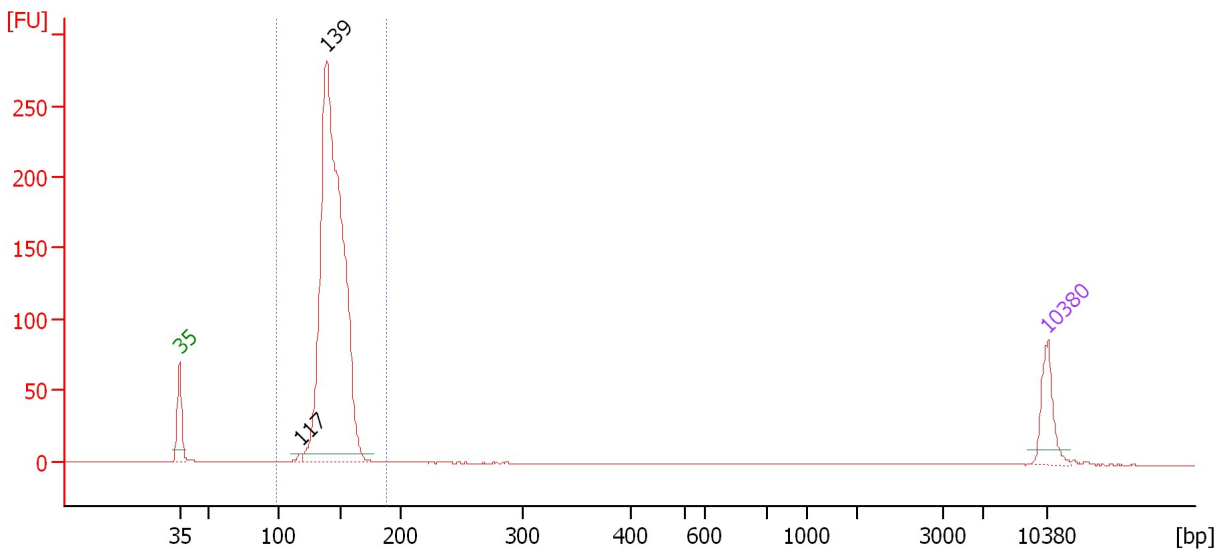
From [bp]	To [bp]	Average Size [bp]	Molarity [pmol/l]	Conc. [pg/μl]	Corr. Area	% of Total	Size distribution in CV [%]	Color
98	193	143	6,687.7	628.44	379.6	87	6.6	Blue

Assay Class: High Sensitivity DNA Assay
 Data Path: C:\...ents and Settings\Bioanalyzer\2012-08-09\2012-08-09_004.xad

Created: 8/9/2012 3:17:50 PM
 Modified: 8/9/2012 3:58:35 PM

Electropherogram Summary Continued ...

3-1/3 Harada



Overall Results for sample 6 : 3-1/3 Harada

Number of peaks found: 2 Corr. Area 1: 1,074.7
 Noise: 0.1

Peak table for sample 6 : 3-1/3 Harada

Peak	Size [bp]	Conc. [pg/μl]	Molarity [pmol/l]	Observations
1	35	125.00	5,411.3	Lower Marker
2	117	10.78	139.1	
3	139	1,858.17	20,249.1	
4	10,380	75.00	10.9	Upper Marker

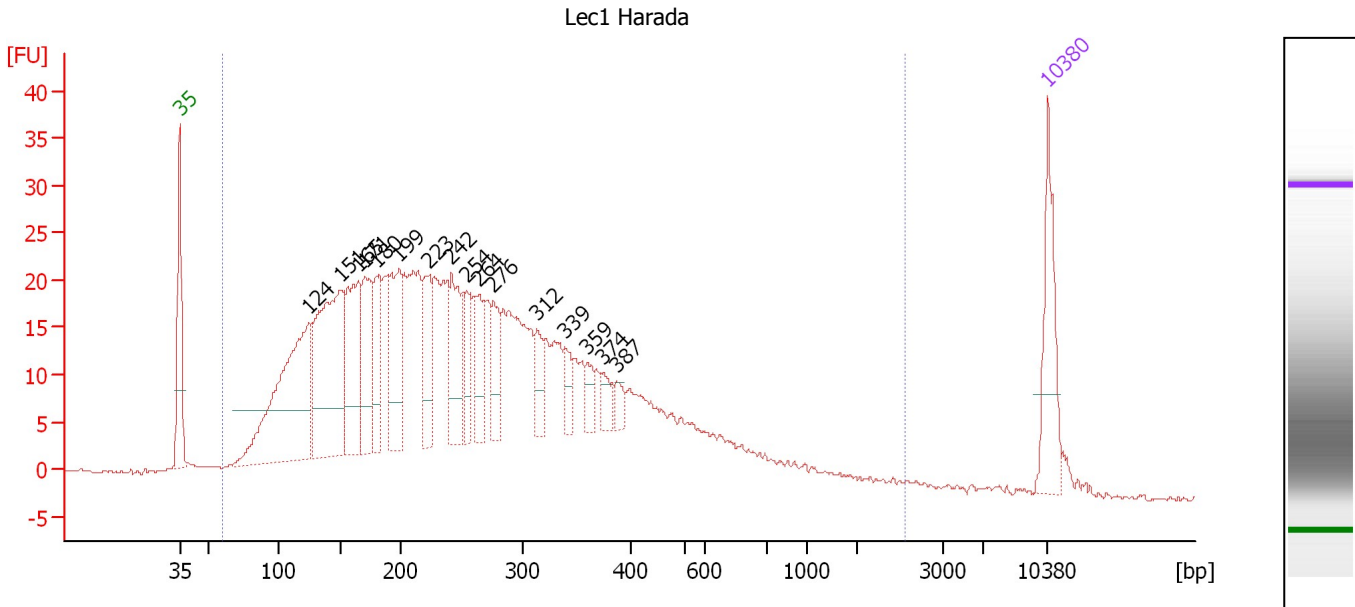
Region table for sample 6 : 3-1/3 Harada

From [bp]	To [bp]	Average Size [bp]	Molarity [pmol/l]	Conc. [pg/μl]	Corr. Area	% of Total	Size distribution in CV [%]	Color
98	189	144	19,530.8	1,853.45	1,074.7	97	6.3	Blue

Assay Class: High Sensitivity DNA Assay
 Data Path: C:\...ents and Settings\Bioanalyzer\2012-08-09\2012-08-09_004.xad

Created: 8/9/2012 3:17:50 PM
 Modified: 8/9/2012 3:58:35 PM

Electropherogram Summary Continued ...



Overall Results for sample 7 : Lec1 Harada

Number of peaks found: 16 Corr. Area 1: 921.7
 Noise: 0.2

Peak table for sample 7 : Lec1 Harada

Peak	Size [bp]	Conc. [pg/μl]	Molarity [pmol/l]	Observations
1	35	125.00	5,411.3	Lower Marker
2	124	361.16	4,399.7	
3	151	319.64	3,202.0	
4	165	163.89	1,503.2	
5	171	115.02	1,021.1	
6	180	80.85	681.9	
7	199	135.54	1,034.4	
8	223	85.06	578.4	
9	242	107.83	676.1	
10	254	56.13	334.8	
11	264	61.14	350.9	
12	276	54.83	301.2	
13	312	38.08	184.7	
14	339	26.76	119.7	
15	359	20.70	87.4	
16	374	20.40	82.7	
17	387	16.65	65.2	
18	10,380	75.00	10.9	Upper Marker

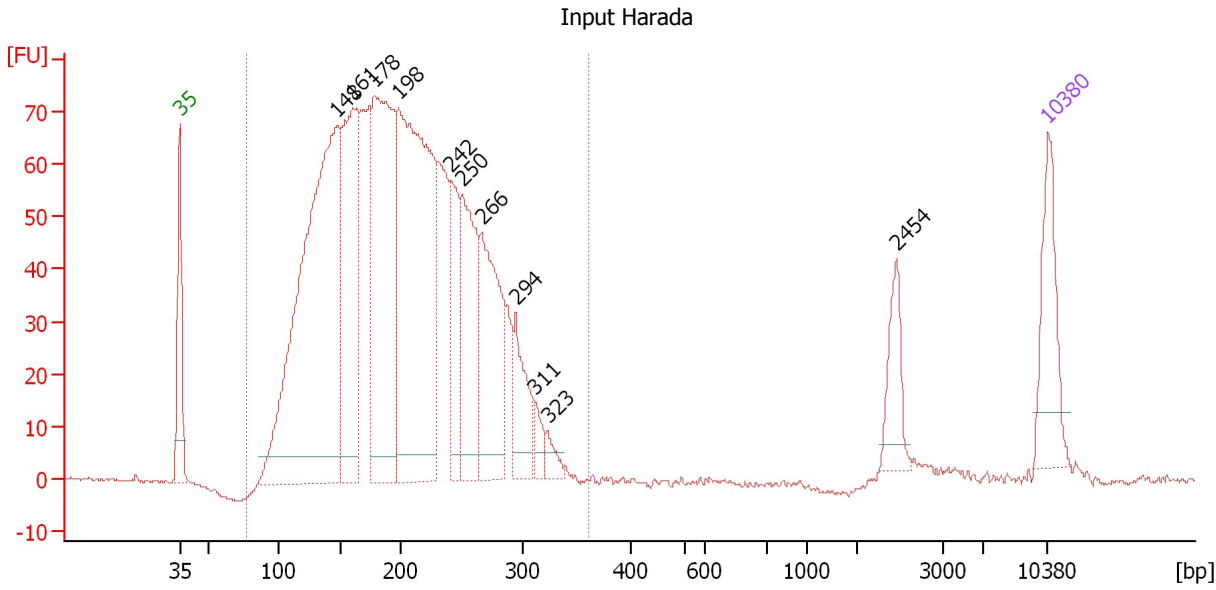
Region table for sample 7 : Lec1 Harada

From [bp]	To [bp]	Average Size [bp]	Molarity [pmol/l]	Conc. [pg/μl]	Corr. Area	% of Total	Size distribution in CV [%]	Color
60	2,557	299	26,165.5	3,396.69	921.7	98	82.0	Blue

Assay Class: High Sensitivity DNA Assay
 Data Path: C:\...ents and Settings\Bioanalyzer\2012-08-09\2012-08-09_004.xad

Created: 8/9/2012 3:17:50 PM
 Modified: 8/9/2012 3:58:35 PM

Electropherogram Summary Continued ...



Overall Results for sample 8 : Input Harada

Number of peaks found: 11 Corr. Area 1: 1,858.3
 Noise: 0.2

Peak table for sample 8 : Input Harada

Peak	Size [bp]	Conc. [pg/µl]	Molarity [pmol/l]	Observations
1	35	125.00	5,411.3	Lower Marker
2	148	875.81	8,985.6	
3	161	343.70	3,232.4	
4	178	477.89	4,067.3	
5	198	628.20	4,797.1	
6	242	114.02	715.4	
7	250	189.85	1,151.0	
8	266	201.81	1,148.4	
9	294	84.69	435.7	
10	311	23.26	113.3	
11	323	17.73	83.2	
12	2,454	47.45	29.3	
13	10,380	75.00	10.9	Upper Marker

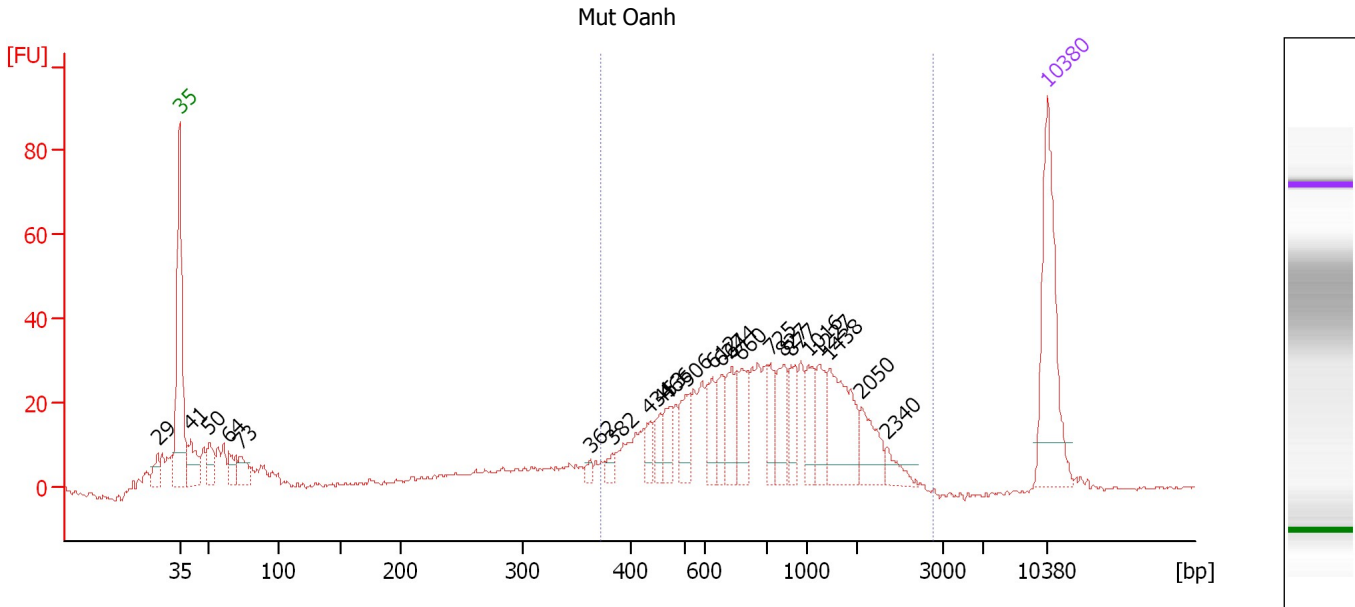
Region table for sample 8 : Input Harada

From [bp]	To [bp]	Average Size [bp]	Molarity [pmol/l]	Conc. [pg/µl]	Corr. Area	% of Total	Size distribution in CV [%]	Color
76	360	199	27,955.9	3,303.52	1,858.3	98	26.9	Blue

Assay Class: High Sensitivity DNA Assay
 Data Path: C:\...ents and Settings\Bioanalyzer\2012-08-09\2012-08-09_004.xad

Created: 8/9/2012 3:17:50 PM
 Modified: 8/9/2012 3:58:35 PM

Electropherogram Summary Continued ...



Overall Results for sample 9 : Mut Oanh

Number of peaks found: 23 Corr. Area 1: 553.7
 Noise: 0.4

Peak table for sample 9 : Mut Oanh

Peak	Size [bp]	Conc. [pg/μl]	Molarity [pmol/l]	Observations
1	29	0.00	0.0	
2	35	125.00	5,411.3	Lower Marker
3	41	32.96	1,227.1	
4	50	20.08	605.1	
5	64	15.74	371.8	
6	73	18.98	393.3	
7	362	4.79	20.1	
8	382	6.77	26.9	
9	434	12.12	42.4	
10	453	14.46	48.3	
11	466	18.48	60.1	
12	506	21.79	65.2	
13	612	21.94	54.3	
14	627	18.65	45.0	
15	644	25.46	59.9	
16	660	28.87	66.3	
17	725	19.93	41.6	
18	827	27.32	50.1	
19	877	21.09	36.4	
20	1,016	22.39	33.4	
21	1,227	21.49	26.5	
22	1,438	54.42	57.3	
23	2,050	23.03	17.0	
24	2,340	9.01	5.8	
25	10,380	75.00	10.9	Upper Marker

Assay Class: High Sensitivity DNA Assay
Data Path: C:\...ents and Settings\Bioanalyzer\2012-08-09\2012-08-09_004.xad

Created: 8/9/2012 3:17:50 PM
Modified: 8/9/2012 3:58:35 PM

Electropherogram Summary Continued ...

... Region table for sample 9 :

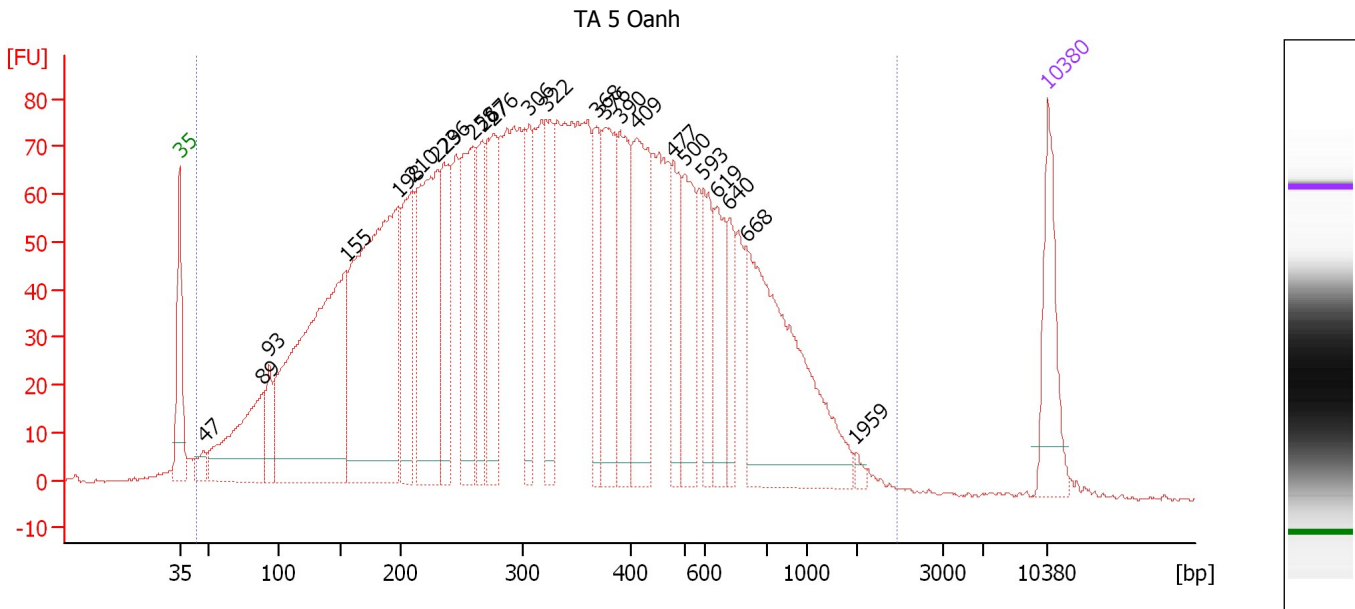
Mut Oanh

From [bp]	To [bp]	Average Size [bp]	Molarity [pmol/l]	Conc. [pg/μl]	Corr. Area	% of Total	Size distribution in CV [%]	Co lor
372	2,878	945	1,144.1	521.38	553.7	69	57.8	

Assay Class: High Sensitivity DNA Assay
 Data Path: C:\...ents and Settings\Bioanalyzer\2012-08-09\2012-08-09_004.xad

Created: 8/9/2012 3:17:50 PM
 Modified: 8/9/2012 3:58:35 PM

Electropherogram Summary Continued ...



Overall Results for sample 10 : TA 5 Oanh

Number of peaks found: 24 Corr. Area 1: 3,822.7
 Noise: 0.3

Peak table for sample 10 : TA 5 Oanh

Peak	Size [bp]	Conc. [pg/μl]	Molarity [pmol/l]	Observations
1	35	125.00	5,411.3	Lower Marker
2	47	21.52	687.9	
3	89	196.42	3,361.6	
4	93	51.00	830.7	
5	155	593.18	5,804.9	
6	198	560.43	4,297.8	
7	210	143.28	1,034.3	
8	229	289.62	1,913.1	
9	236	141.25	908.7	
10	258	185.52	1,089.1	
11	267	100.80	572.4	
12	276	146.75	805.5	
13	306	110.38	546.7	
14	322	93.87	442.3	
15	368	82.54	340.0	
16	376	155.01	624.7	
17	390	135.26	525.7	
18	409	174.00	645.1	
19	477	85.01	270.3	
20	500	109.57	332.1	
21	593	64.93	165.8	
22	619	75.90	185.7	
23	640	51.17	121.2	
24	668	320.67	727.1	
25	1,959	5.30	4.1	
26	10,380	75.00	10.9	Upper Marker

Assay Class: High Sensitivity DNA Assay
Data Path: C:\...ents and Settings\Bioanalyzer\2012-08-09\2012-08-09_004.xad

Created: 8/9/2012 3:17:50 PM
Modified: 8/9/2012 3:58:35 PM

Electropherogram Summary Continued ...

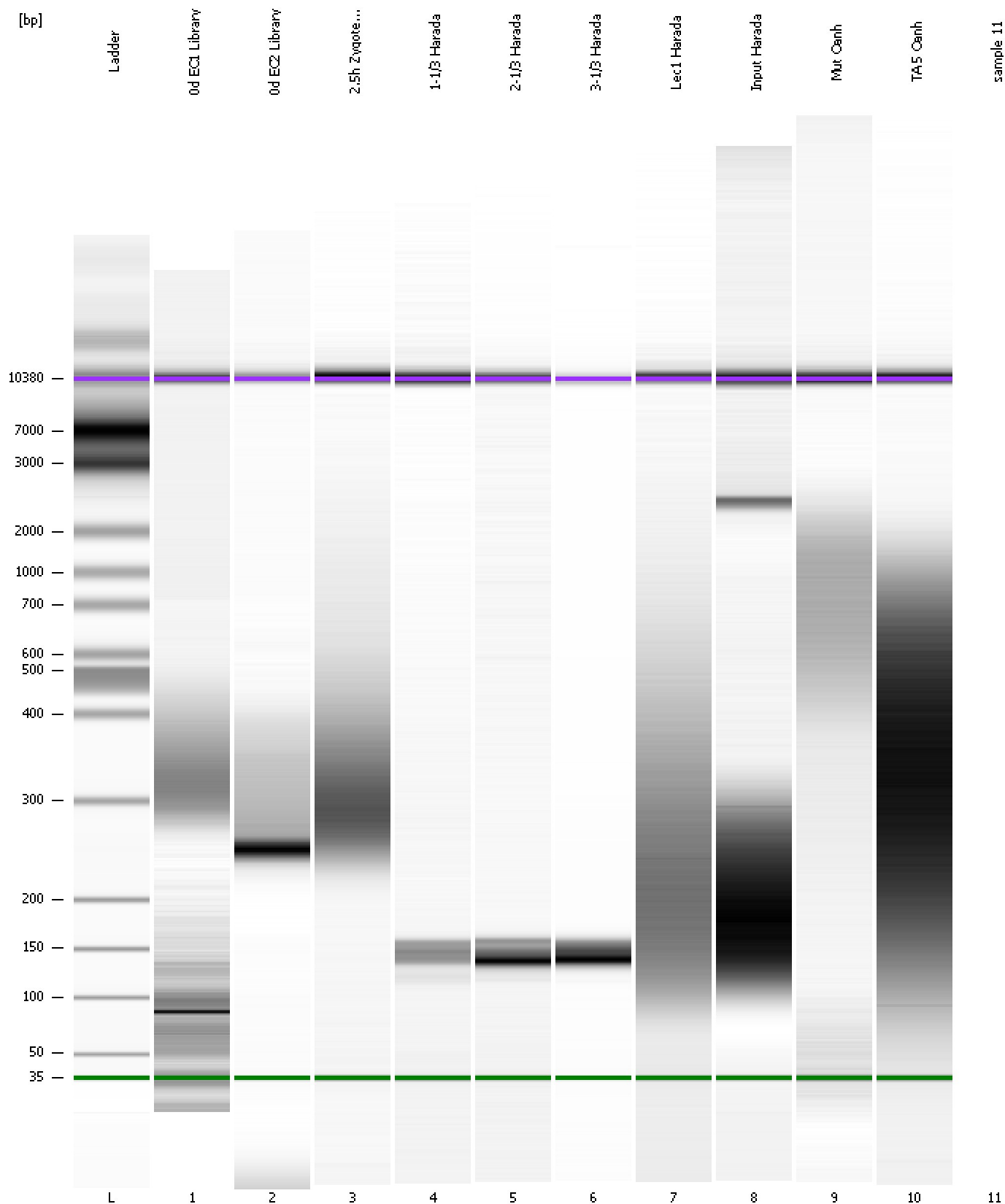
... Region table for sample 10 : TA 5 Oanh

From [bp]	To [bp]	Average Size [bp]	Molarity [pmol/l]	Conc. [pg/μl]	Corr. Area	% of Total	Size distribution in CV [%]	Color
44	2,449	388	35,779.7	5,376.06	3,822.7	99	69.5	■

Assay Class: High Sensitivity DNA Assay
Data Path: C:\...ents and Settings\Bioanalyzer\2012-08-09\2012-08-09_004.xad

Created: 8/9/2012 3:17:50 PM
Modified: 8/9/2012 3:58:35 PM

Gel Image



Assay Class: High Sensitivity DNA Assay
Data Path: C:\...ents and Settings\Bioanalyzer\2012-08-09\2012-08-09_004.xad

Created: 8/9/2012 3:17:50 PM
Modified: 8/9/2012 3:58:35 PM

Invalid Samples

Sample 11 has not been run, no results available.