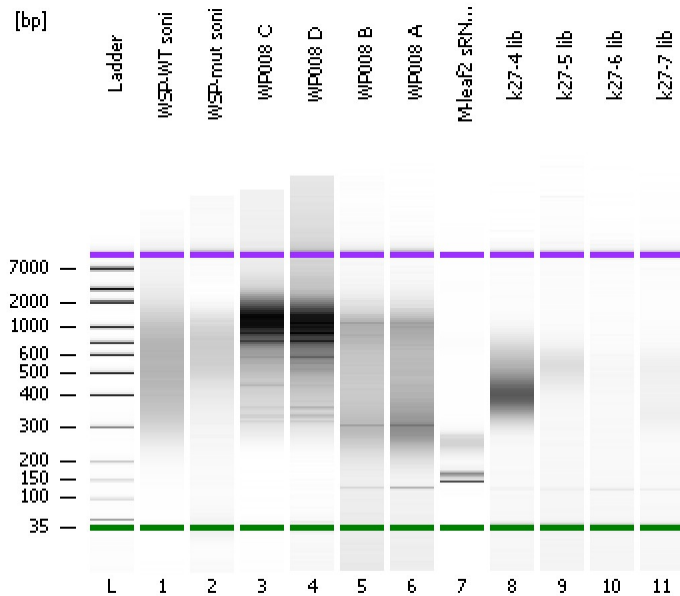


Assay Class: High Sensitivity DNA Assay
Data Path: C:\...ents and Settings\Bioanalyzer\2012-08-09\2012-08-09_005.xad

Created: 8/9/2012 4:37:39 PM
Modified: 8/9/2012 5:24:00 PM

Electrophoresis File Run Summary



Instrument Information:

Instrument Name: DE13701086 Firmware: C.01.069
Serial#: DE13701086 Type: G2938B

Assay Information:

Assay Origin Path: C:\Program Files\Agilent\2100 bioanalyzer\2100 expert\assays\dsDNA\High Sensitivity DNA.xsy
Assay Class: High Sensitivity DNA Assay
Version: 1.03
Assay Comments: Copyright © 2003-2010 Agilent Technologies

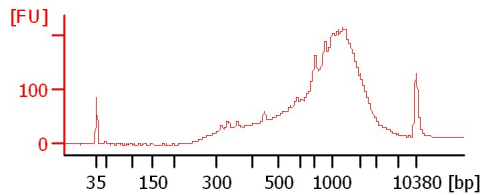
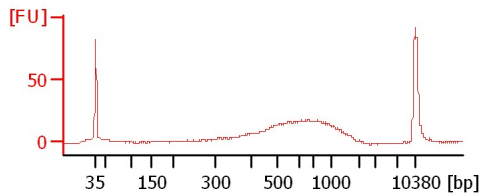
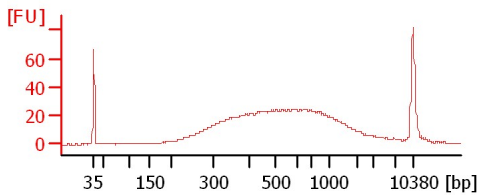
Chip Information:

Chip Lot #:
Reagent Kit Lot #:
Chip Comments:

WSP-WT soni

WSP-mut soni

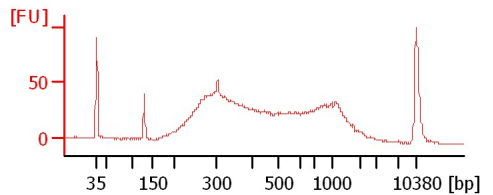
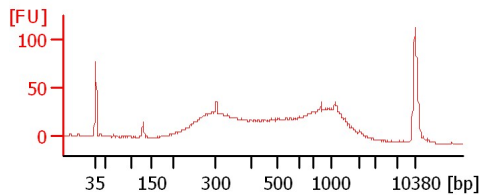
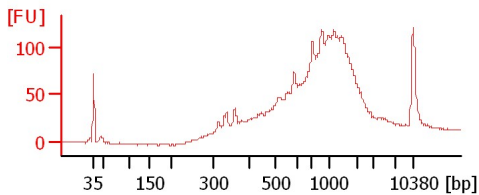
WP008 C



WP008 D

WP008 B

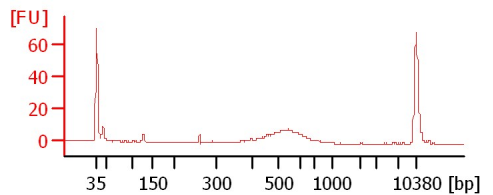
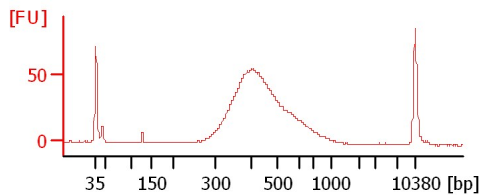
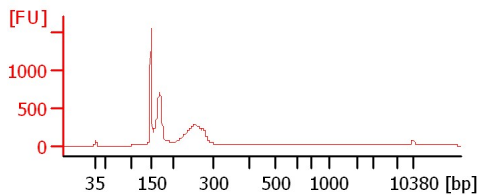
WP008 A



M-leaf2 sRNA lib

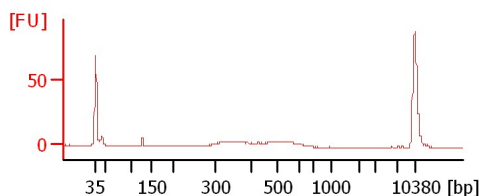
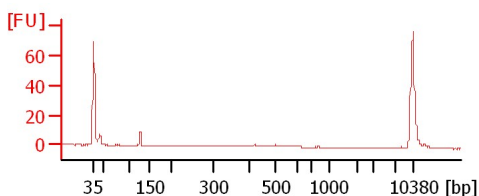
k27-4 lib

k27-5 lib



k27-6 lib

k27-7 lib



Assay Class: High Sensitivity DNA Assay
Data Path: C:\...ents and Settings\Bioanalyzer\2012-08-09\2012-08-09_005.xad

Created: 8/9/2012 4:37:39 PM
Modified: 8/9/2012 5:24:00 PM

Electrophoresis File Run Summary (Chip Summary)

Sample Name	Sample Comment	Rest. Digest	Status	Observation	Result Label	Result Color
WSP-WT soni		<input type="checkbox"/>	✓			
WSP-mut soni		<input type="checkbox"/>	✓			
WP008 C		<input type="checkbox"/>	✓			
WP008 D		<input type="checkbox"/>	✓			
WP008 B		<input type="checkbox"/>	✓			
WP008 A		<input type="checkbox"/>	✓			
M-leaf2 sRNA lib		<input type="checkbox"/>	✓			
k27-4 lib		<input type="checkbox"/>	✓			
k27-5 lib		<input type="checkbox"/>	✓			
k27-6 lib		<input type="checkbox"/>	✓			
k27-7 lib		<input type="checkbox"/>	✓			
Ladder		<input type="checkbox"/>	✓			

Chip Lot #

Reagent Kit Lot #

Chip Comments :

Assay Class: High Sensitivity DNA Assay
 Data Path: C:\...ents and Settings\Bioanalyzer\2012-08-09\2012-08-09_005.xad

Created: 8/9/2012 4:37:39 PM
 Modified: 8/9/2012 5:24:00 PM

Electrophoresis Assay Details

General Analysis Settings

Number of Available Sample and Ladder Wells (Max.) : 12
 Minimum Visible Range [s] : 32
 Maximum Visible Range [s] : 138
 Start Analysis Time Range [s] : 33
 End Analysis Time Range [s] : 137.5
 Ladder Concentration [pg/μl] : 1950
 Uses Standard Area for Ladder Fragments
 Lower Marker Concentration [pg/μl] : 125
 Upper Marker Concentration [pg/μl] : 75
 Used Upper Marker for Quantitation
 Standard Curve Fit is Point to Point
 Show Data Aligned to Lower and Upper Marker

Integrator Settings

Integration Start Time [s] : 33.05
 Integration End Time [s] : 137
 Slope Threshold : 0.8
 Height Threshold [FU] : 5
 Area Threshold : 0.1
 Width Threshold [s] : 0.6
 Baseline Plateau [s] : 0.5

Filter Settings

Filter Width [s] : 0.5
 Polynomial Order : 4

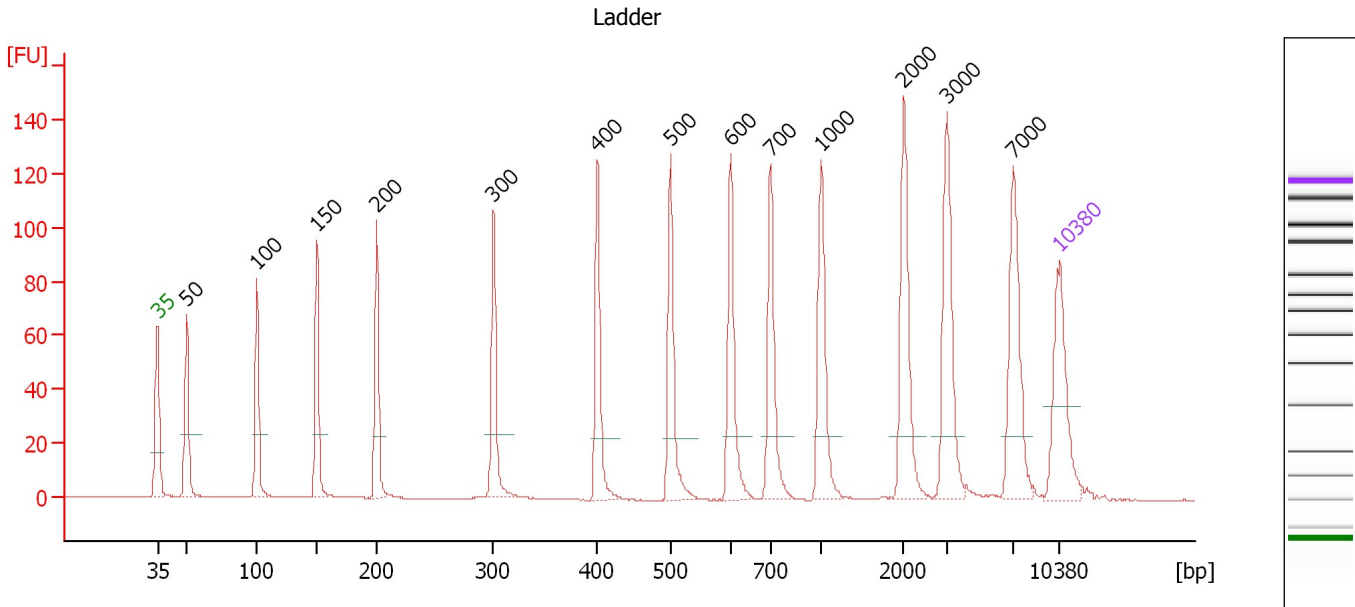
Ladder

Ladder Peak	Size	Area
1	35	160
2	50	210
3	100	208
4	150	221
5	200	242
6	300	270
7	400	305
8	500	306
9	600	336
10	700	321
11	1000	366
12	2000	413
13	3000	411
14	7000	400
15	10380	214

Assay Class: High Sensitivity DNA Assay
 Data Path: C:\...ents and Settings\Bioanalyzer\2012-08-09\2012-08-09_005.xad

Created: 8/9/2012 4:37:39 PM
 Modified: 8/9/2012 5:24:00 PM

Electropherogram Summary



Overall Results for Ladder

Noise: 0.1

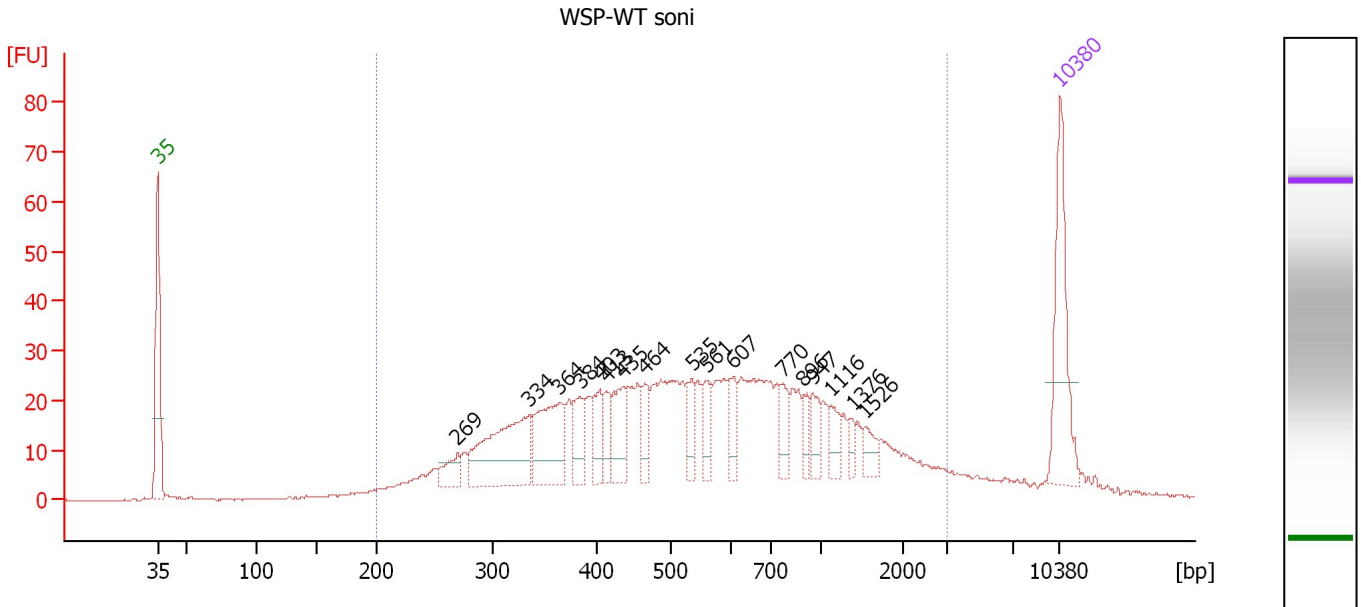
Peak table for Ladder

Peak	Size [bp]	Conc. [pg/μl]	Molarity [pmol/l]	Observations
1	35	125.00	5,411.3	Lower Marker
2	50	150.00	4,545.5	Ladder Peak
3	100	150.00	2,272.7	Ladder Peak
4	150	150.00	1,515.2	Ladder Peak
5	200	150.00	1,136.4	Ladder Peak
6	300	150.00	757.6	Ladder Peak
7	400	150.00	568.2	Ladder Peak
8	500	150.00	454.5	Ladder Peak
9	600	150.00	378.8	Ladder Peak
10	700	150.00	324.7	Ladder Peak
11	1,000	150.00	227.3	Ladder Peak
12	2,000	150.00	113.6	Ladder Peak
13	3,000	150.00	75.8	Ladder Peak
14	7,000	150.00	32.5	Ladder Peak
15	10,380	75.00	10.9	Upper Marker

Assay Class: High Sensitivity DNA Assay
 Data Path: C:\...ents and Settings\Bioanalyzer\2012-08-09\2012-08-09_005.xad

Created: 8/9/2012 4:37:39 PM
 Modified: 8/9/2012 5:24:00 PM

Electropherogram Summary Continued ...



Overall Results for sample 1 : WSP-WT soni

Number of peaks found: 17 Corr. Area 1: 898.6
 Noise: 0.1

Peak table for sample 1 : WSP-WT soni

Peak	Size [bp]	Conc. [pg/μl]	Molarity [pmol/l]	Observations
1	35	125.00	5,411.3	Lower Marker
2	269	25.82	145.4	
3	334	127.32	577.0	
4	364	84.35	351.4	
5	384	32.07	126.6	
6	403	29.26	109.9	
7	413	21.19	77.8	
8	435	40.90	142.5	
9	464	23.31	76.1	
10	535	23.64	66.9	
11	561	25.57	69.1	
12	607	24.70	61.6	
13	770	23.05	45.4	
14	896	13.94	23.6	
15	947	18.33	29.3	
16	1,116	18.78	25.5	
17	1,376	8.51	9.4	
18	1,526	12.71	12.6	
19	10,380	75.00	10.9	Upper Marker

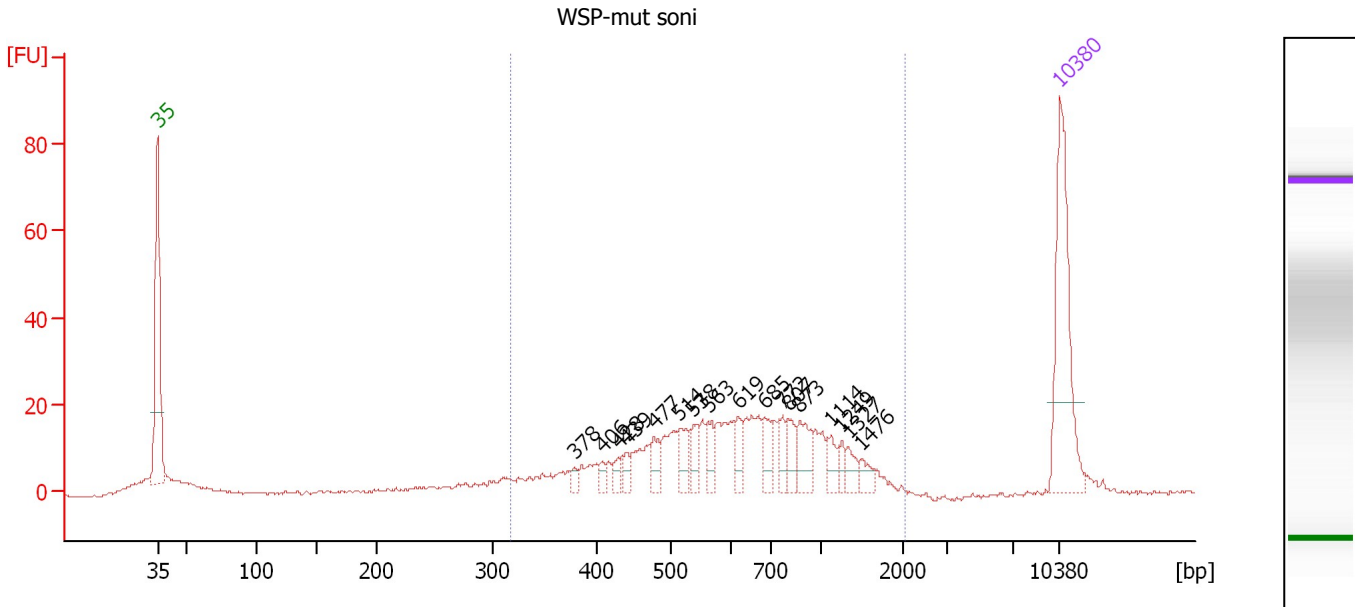
Region table for sample 1 : WSP-WT soni

From [bp]	To [bp]	Average Size [bp]	Molarity [pmol/l]	Conc. [pg/μl]	Corr. Area	% of Total	Size distribution in CV [%]	Color
200	3,058	692	4,342.6	1,319.73	898.6	94	71.3	Blue

Assay Class: High Sensitivity DNA Assay
 Data Path: C:\...ents and Settings\Bioanalyzer\2012-08-09\2012-08-09_005.xad

Created: 8/9/2012 4:37:39 PM
 Modified: 8/9/2012 5:24:00 PM

Electropherogram Summary Continued ...



Overall Results for sample 2 : WSP-mut soni

Number of peaks found: 17 Corr. Area 1: 359.7
 Noise: 0.3

Peak table for sample 2 : WSP-mut soni

Peak	Size [bp]	Conc. [pg/μl]	Molarity [pmol/l]	Observations
1	35	125.00	5,411.3	Lower Marker
2	378	4.89	19.6	
3	406	5.92	22.1	
4	428	7.33	25.9	
5	439	7.47	25.8	
6	477	13.70	43.5	
7	514	17.76	52.3	
8	538	12.59	35.4	
9	563	13.48	36.3	
10	619	12.70	31.1	
11	685	18.18	40.2	
12	772	11.38	22.3	
13	807	14.95	28.1	
14	873	19.47	33.8	
15	1,114	9.90	13.5	
16	1,249	6.01	7.3	
17	1,327	8.52	9.7	
18	1,476	6.92	7.1	
19	10,380	75.00	10.9	Upper Marker

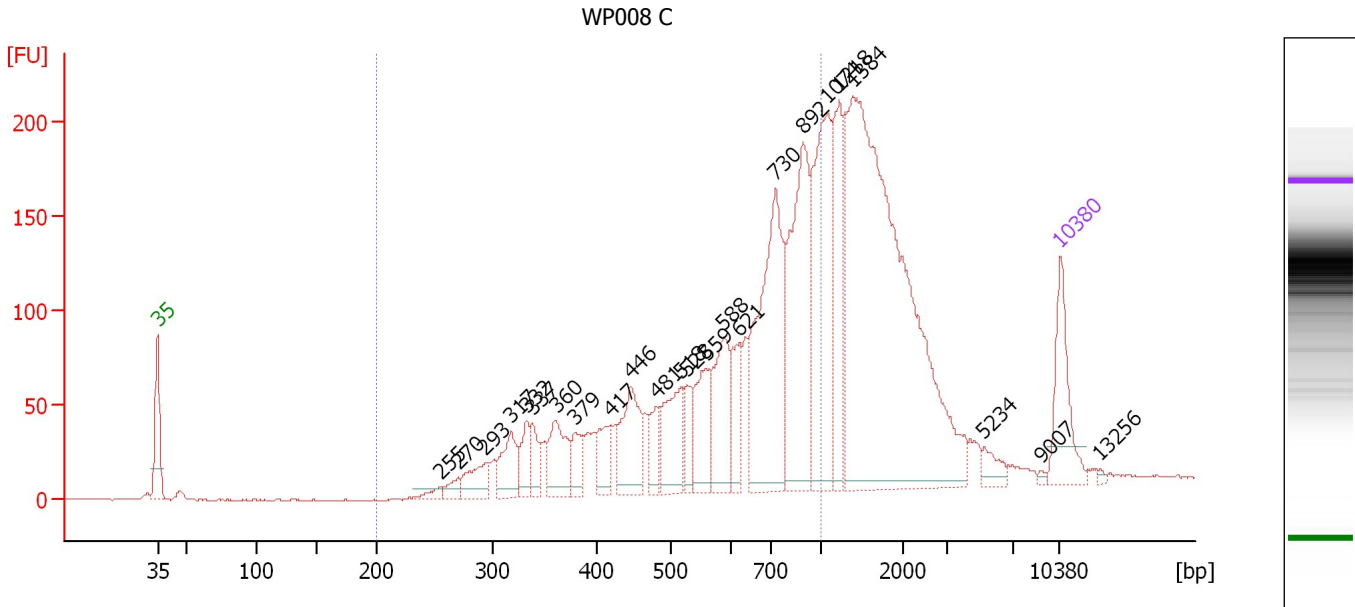
Region table for sample 2 : WSP-mut soni

From [bp]	To [bp]	Average Size [bp]	Molarity [pmol/l]	Conc. [pg/μl]	Corr. Area	% of Total	Size distribution in CV [%]	Color
317	2,011	703	975.7	373.38	359.7	88	43.8	Blue

Assay Class: High Sensitivity DNA Assay
 Data Path: C:\...ents and Settings\Bioanalyzer\2012-08-09\2012-08-09_005.xad

Created: 8/9/2012 4:37:39 PM
 Modified: 8/9/2012 5:24:00 PM

Electropherogram Summary Continued ...



Overall Results for sample 3 : WP008 C

Number of peaks found: 24 Corr. Area 1: 1,997.2
 Noise: 0.5

Peak table for sample 3 : WP008 C

Peak	Size [bp]	Conc. [pg/μl]	Molarity [pmol/l]	Observations
1	35	125.00	5,411.3	Lower Marker
2	255	13.32	79.0	
3	270	17.92	100.5	
4	293	46.67	241.2	
5	317	61.08	292.0	
6	332	41.11	187.7	
7	337	32.71	147.0	
8	360	75.96	319.7	
9	379	36.31	145.2	
10	417	45.20	164.1	
11	446	97.01	329.7	
12	481	38.67	121.9	
13	518	92.17	269.5	
14	528	41.14	118.0	
15	559	75.88	205.8	
16	588	104.86	270.1	
17	621	57.07	139.2	
18	730	298.29	619.0	
19	892	246.58	418.9	
20	1,074	231.89	327.1	
21	1,218	126.77	157.7	
22	1,384	773.79	847.2	
23	5,234	18.78	5.4	
24	9,007	2.65	0.4	
25	10,380	75.00	10.9	Upper Marker
26	13,256	0.00	0.0	

Assay Class: High Sensitivity DNA Assay
Data Path: C:\...ents and Settings\Bioanalyzer\2012-08-09\2012-08-09_005.xad

Created: 8/9/2012 4:37:39 PM
Modified: 8/9/2012 5:24:00 PM

Electropherogram Summary Continued ...

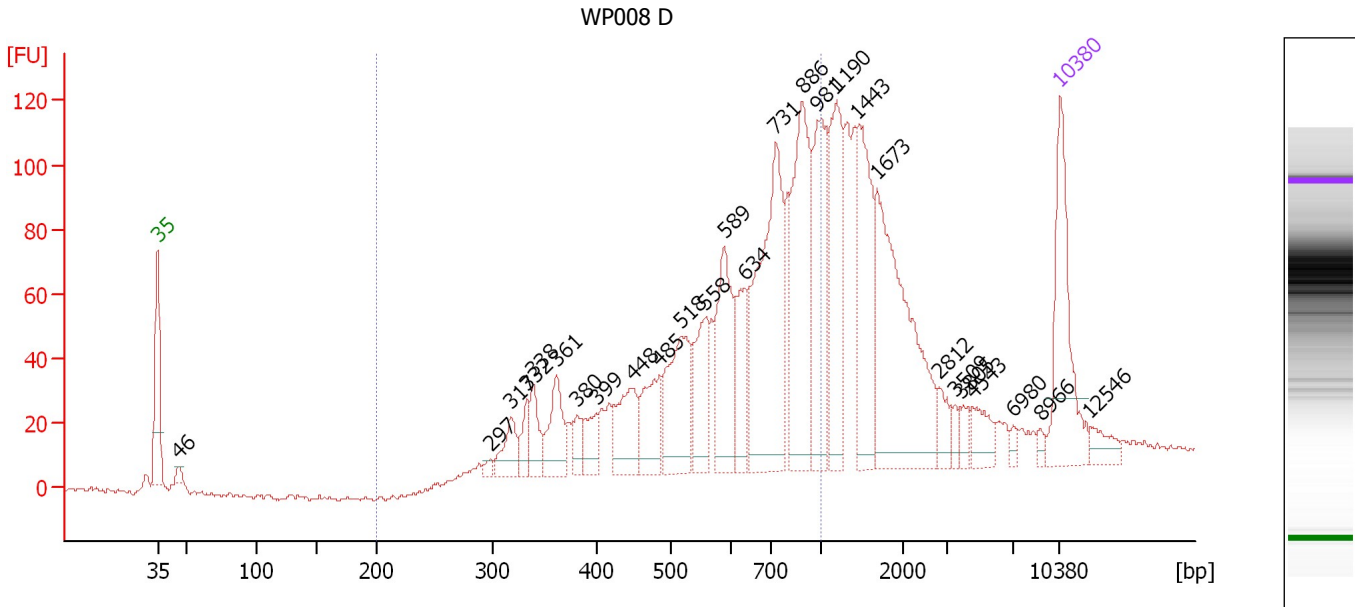
... Region table for sample 3 : WP008 C

From [bp]	To [bp]	Average Size [bp]	Molarity [pmol/l]	Conc. [pg/μl]	Corr. Area	% of Total	Size distribution in CV [%]	Color
200	1,000	636	4,470.9	1,580.95	1,997.2	56	31.9	■

Assay Class: High Sensitivity DNA Assay
 Data Path: C:\...ents and Settings\Bioanalyzer\2012-08-09\2012-08-09_005.xad

Created: 8/9/2012 4:37:39 PM
 Modified: 8/9/2012 5:24:00 PM

Electropherogram Summary Continued ...



Overall Results for sample 4 : WP008 D

Number of peaks found: 27 Corr. Area 1: 1,300.8
 Noise: 0.9

Peak table for sample 4 : WP008 D

Peak	Size [bp]	Conc. [pg/μl]	Molarity [pmol/l]	Observations
1	35	125.00	5,411.3	Lower Marker
2	46	7.21	236.9	
3	297	4.45	22.7	
4	317	28.11	134.3	
5	332	18.31	83.6	
6	338	27.01	120.9	
7	361	42.91	180.2	
8	380	14.12	56.2	
9	399	22.13	84.1	
10	448	50.80	172.0	
11	485	47.20	147.4	
12	518	83.48	244.3	
13	558	52.24	141.8	
14	589	78.06	200.8	
15	634	47.90	114.4	
16	731	183.33	380.2	
17	886	134.77	230.4	
18	981	92.51	142.9	
19	1,190	91.20	116.1	
20	1,443	93.01	97.7	
21	1,673	160.71	145.6	
22	2,812	14.18	7.6	
23	3,509	6.78	2.9	
24	3,805	8.77	3.5	
25	4,543	17.80	5.9	
26	6,980	4.58	1.0	


Assay Class: High Sensitivity DNA Assay
Data Path: C:\...ents and Settings\Bioanalyzer\2012-08-09\2012-08-09_005.xad

Created: 8/9/2012 4:37:39 PM
Modified: 8/9/2012 5:24:00 PM

Electropherogram Summary Continued ...**... Peak table for sample 4 : WP008 D**

Peak	Size [bp]	Conc. [pg/ μ l]	Molarity [pmol/l]	Observations
27	8,966	4.05	0.7	
28	10,380	75.00	10.9	Upper Marker
29	12,546	0.00	0.0	

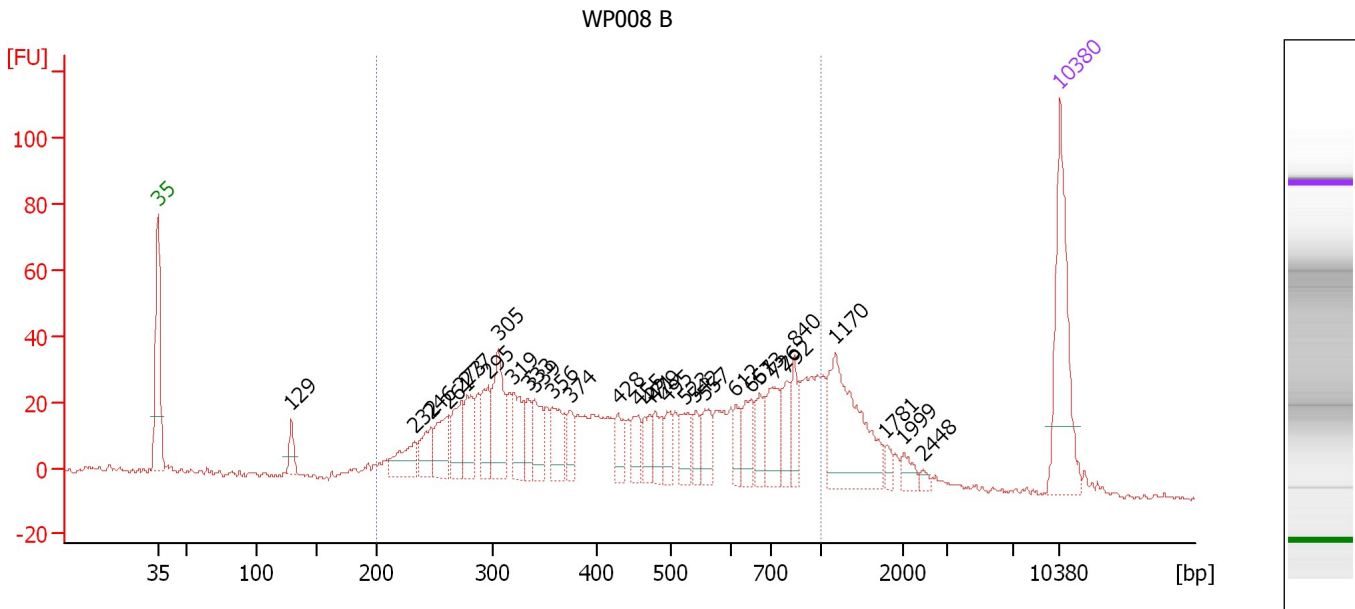
Region table for sample 4 : WP008 D

From [bp]	To [bp]	Average Size [bp]	Molarity [pmol/l]	Conc. [pg/ μ l]	Corr. Area	% of Total	Size distribution in CV [%]	Color
200	1,000	635	2,743.4	994.47	1,300.8	58	30.2	

Assay Class: High Sensitivity DNA Assay
 Data Path: C:\...ents and Settings\Bioanalyzer\2012-08-09\2012-08-09_005.xad

Created: 8/9/2012 4:37:39 PM
 Modified: 8/9/2012 5:24:00 PM

Electropherogram Summary Continued ...



Overall Results for sample 5 : WP008 B

Number of peaks found: 31 Corr. Area 1: 975.9
 Noise: 0.9

Peak table for sample 5 : WP008 B

Peak	Size [bp]	Conc. [pg/μl]	Molarity [pmol/l]	Observations
1	35	125.00	5,411.3	Lower Marker
2	129	17.64	207.7	
3	232	33.05	215.4	
4	246	27.26	168.0	
5	261	35.83	207.8	
6	273	36.61	203.5	
7	277	33.17	181.2	
8	295	33.19	170.5	
9	305	54.72	271.7	
10	319	34.49	163.9	
11	333	22.04	100.2	
12	339	30.27	135.2	
13	356	29.94	127.4	
14	374	17.17	69.5	
15	428	18.66	66.1	
16	455	19.46	64.8	
17	471	18.24	58.6	
18	479	19.90	62.9	
19	495	16.65	50.9	
20	523	21.88	63.4	
21	542	15.89	44.4	
22	557	20.44	55.6	
23	612	14.82	36.7	
24	651	23.28	54.2	
25	673	18.36	41.3	
26	726	35.06	73.2	

Assay Class: High Sensitivity DNA Assay
 Data Path: C:\...ents and Settings\Bioanalyzer\2012-08-09\2012-08-09_005.xad

Created: 8/9/2012 4:37:39 PM
 Modified: 8/9/2012 5:24:00 PM

Electropherogram Summary Continued ...

... Peak table for sample 5 : WP008 B

Peak	Size [bp]	Conc. [pg/μl]	Molarity [pmol/l]	Observations
27	792	21.56	41.2	
28	840	19.99	36.0	
29	1,170	93.89	121.6	
30	1,781	6.11	5.2	
31	1,999	8.73	6.6	
32	2,448	3.36	2.1	
33	▶ 10,380	75.00	10.9	Upper Marker

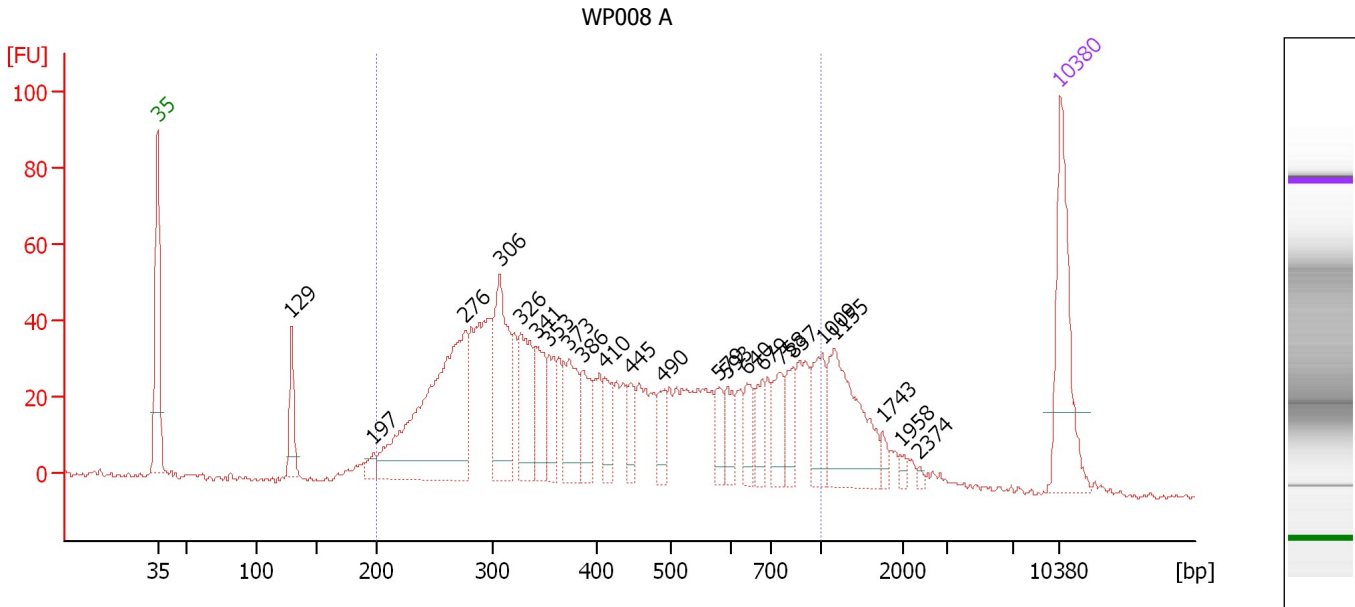
Region table for sample 5 : WP008 B

From [bp]	To [bp]	Average Size [bp]	Molarity [pmol/l]	Conc. [pg/μl]	Corr. Area	% of Total	Size distribution in CV [%]	Color
200	1,000	491	3,698.3	946.07	975.9	82	41.8	■

Assay Class: High Sensitivity DNA Assay
 Data Path: C:\...ents and Settings\Bioanalyzer\2012-08-09\2012-08-09_005.xad

Created: 8/9/2012 4:37:39 PM
 Modified: 8/9/2012 5:24:00 PM

Electropherogram Summary Continued ...



Overall Results for sample 6 : WP008 A

Number of peaks found: 23 Corr. Area 1: 1,309.0
 Noise: 0.7


Peak table for sample 6 : WP008 A

Peak	Size [bp]	Conc. [pg/μl]	Molarity [pmol/l]	Observations
1	35	125.00	5,411.3	Lower Marker
2	129	43.17	508.4	
3	197	10.95	84.1	
4	276	263.51	1,448.5	
5	306	110.02	544.6	
6	326	69.70	323.8	
7	341	49.70	221.0	
8	353	32.29	138.6	
9	373	55.68	226.2	
10	386	35.13	137.7	
11	410	25.35	93.7	
12	445	20.56	69.9	
13	490	20.18	62.4	
14	579	19.74	51.6	
15	593	22.73	58.1	
16	640	22.48	53.2	
17	679	23.28	52.0	
18	758	30.07	60.1	
19	837	21.63	39.2	
20	1,009	35.81	53.8	
21	1,155	88.05	115.5	
22	1,743	7.12	6.2	
23	1,958	4.00	3.1	
24	2,374	2.31	1.5	
25	10,380	75.00	10.9	Upper Marker

Assay Class: High Sensitivity DNA Assay
Data Path: C:\...ents and Settings\Bioanalyzer\2012-08-09\2012-08-09_005.xad

Created: 8/9/2012 4:37:39 PM
Modified: 8/9/2012 5:24:00 PM

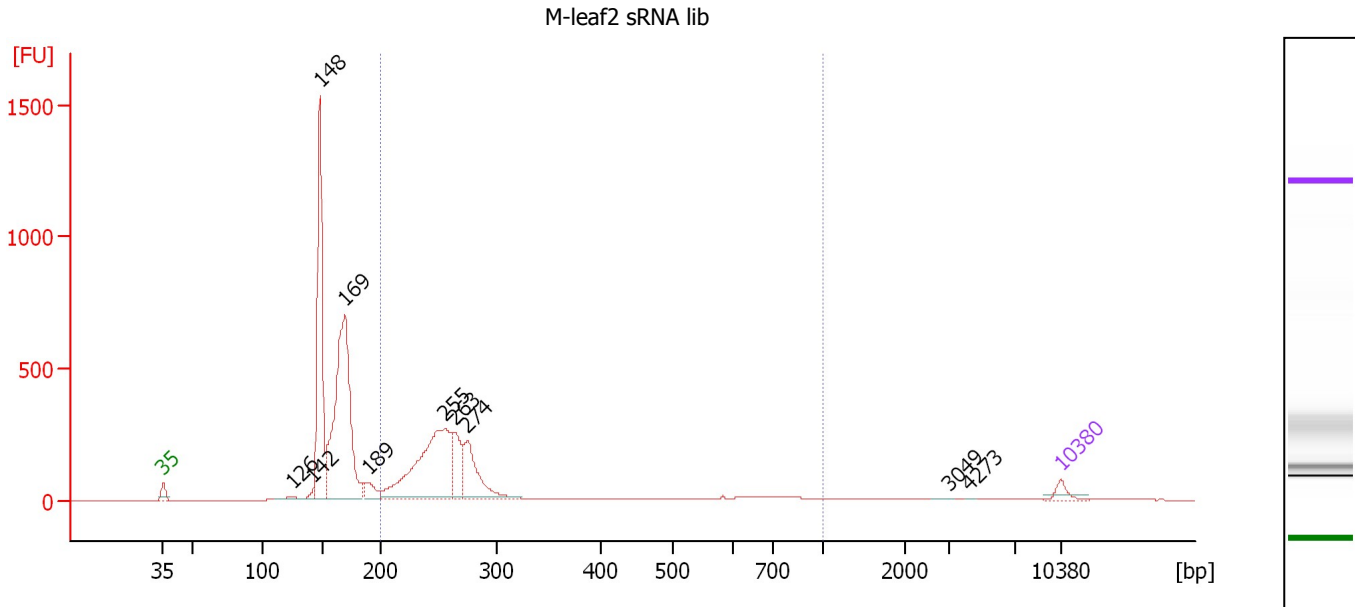
Electropherogram Summary Continued ...**... Region table for sample 6 : WP008 A**

From [bp]	To [bp]	Average Size [bp]	Molarity [pmol/l]	Conc. [pg/μl]	Corr. Area	% of Total	Size distribution in CV [%]	Co lor
200	1,000	454	5,636.6	1,353.32	1,309.0	85	42.9	

Assay Class: High Sensitivity DNA Assay
 Data Path: C:\...ents and Settings\Bioanalyzer\2012-08-09\2012-08-09_005.xad

Created: 8/9/2012 4:37:39 PM
 Modified: 8/9/2012 5:24:00 PM

Electropherogram Summary Continued ...



Overall Results for sample 7 : M-leaf2 sRNA lib

Number of peaks found: 10 Corr. Area 1: 2,451.2
 Noise: 0.5

Peak table for sample 7 : M-leaf2 sRNA lib

Peak	Size [bp]	Conc. [pg/μl]	Molarity [pmol/l]	Observations
1	35	125.00	5,411.3	Lower Marker
2	126	45.53	546.6	
3	142	51.09	545.1	
4	148	2,382.96	24,340.3	
5	169	3,391.59	30,393.8	
6	189	192.54	1,541.2	
7	255	2,194.76	13,042.6	
8	263	512.26	2,949.6	
9	274	728.91	4,030.2	
10	3,049	11.01	5.5	
11	4,273	5.93	2.1	
12	10,380	75.00	10.9	Upper Marker

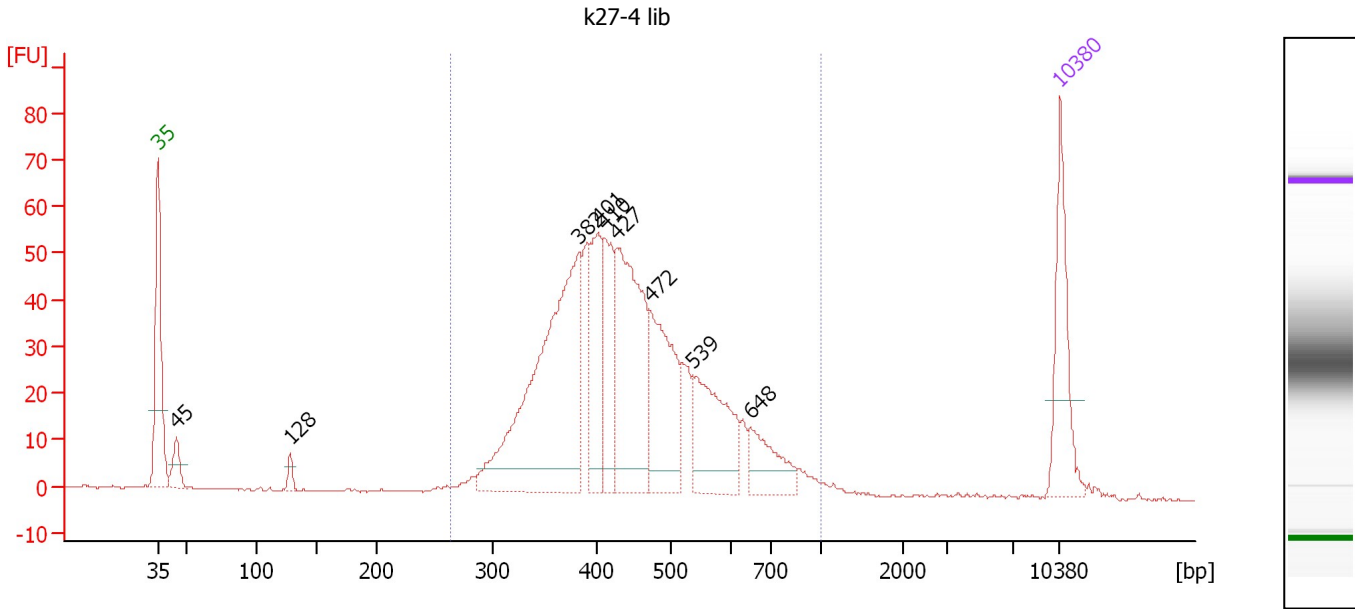
Region table for sample 7 : M-leaf2 sRNA lib

From [bp]	To [bp]	Average Size [bp]	Molarity [pmol/l]	Conc. [pg/μl]	Corr. Area	% of Total	Size distribution in CV [%]	Color
200	1,000	299	23,709.3	4,156.91	2,451.2	42	44.0	Blue

Assay Class: High Sensitivity DNA Assay
 Data Path: C:\...ents and Settings\Bioanalyzer\2012-08-09\2012-08-09_005.xad

Created: 8/9/2012 4:37:39 PM
 Modified: 8/9/2012 5:24:00 PM

Electropherogram Summary Continued ...



Overall Results for sample 8 : k27-4 lib

Number of peaks found: 9 Corr. Area 1: 893.1
 Noise: 0.2

Peak table for sample 8 : k27-4 lib

Peak	Size [bp]	Conc. [pg/μl]	Molarity [pmol/l]	Observations
1	35	125.00	5,411.3	Lower Marker
2	45	32.81	1,107.4	
3	128	11.37	134.9	
4	382	384.41	1,524.2	
5	401	94.17	356.0	
6	410	81.89	303.0	
7	427	222.22	788.5	
8	472	144.97	465.0	
9	539	120.28	338.4	
10	648	53.44	124.9	
11	10,380	75.00	10.9	Upper Marker

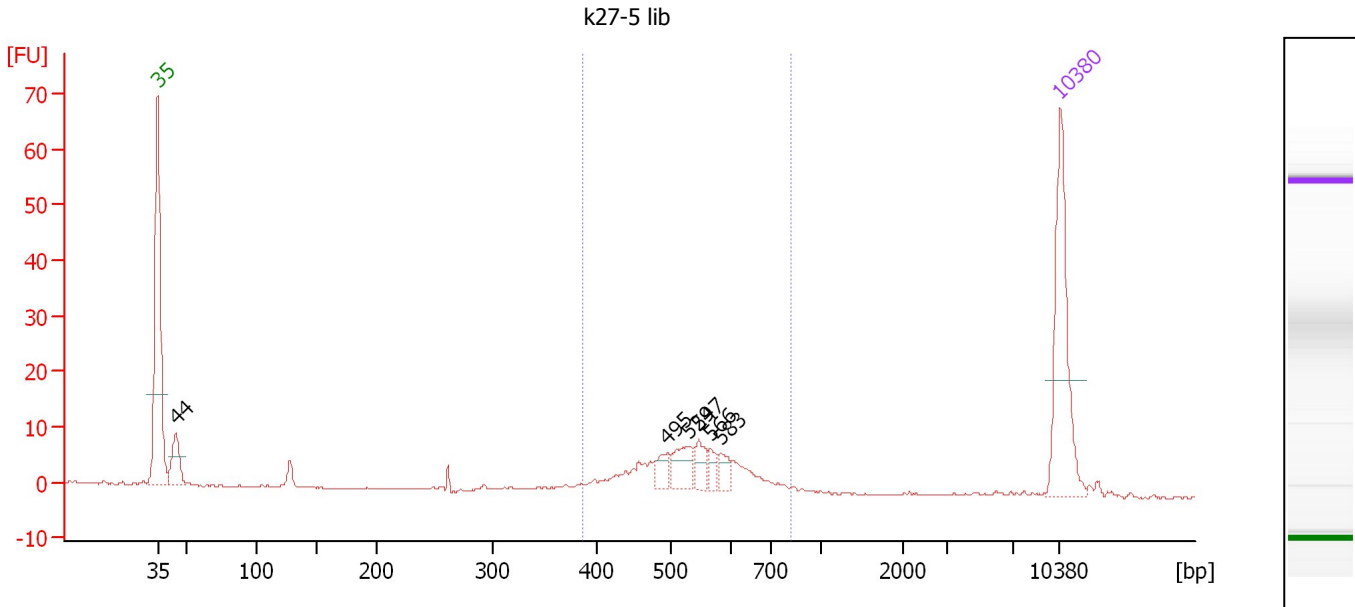
Region table for sample 8 : k27-4 lib

From [bp]	To [bp]	Average Size [bp]	Molarity [pmol/l]	Conc. [pg/μl]	Corr. Area	% of Total	Size distribution in CV [%]	Color
263	1,000	453	4,480.5	1,255.44	893.1	97	24.3	Blue

Assay Class: High Sensitivity DNA Assay
 Data Path: C:\...ents and Settings\Bioanalyzer\2012-08-09\2012-08-09_005.xad

Created: 8/9/2012 4:37:39 PM
 Modified: 8/9/2012 5:24:00 PM

Electropherogram Summary Continued ...



Overall Results for sample 9 : k27-5 lib

Number of peaks found: 6 Corr. Area 1: 83.8
 Noise: 0.1

Peak table for sample 9 : k27-5 lib

Peak	Size [bp]	Conc. [pg/μl]	Molarity [pmol/l]	Observations
1	35	125.00	5,411.3	Lower Marker
2	44	32.43	1,108.2	
3	495	12.97	39.7	
4	529	23.34	66.9	
5	547	13.54	37.5	
6	566	8.56	22.9	
7	583	9.38	24.4	
8	10,380	75.00	10.9	Upper Marker

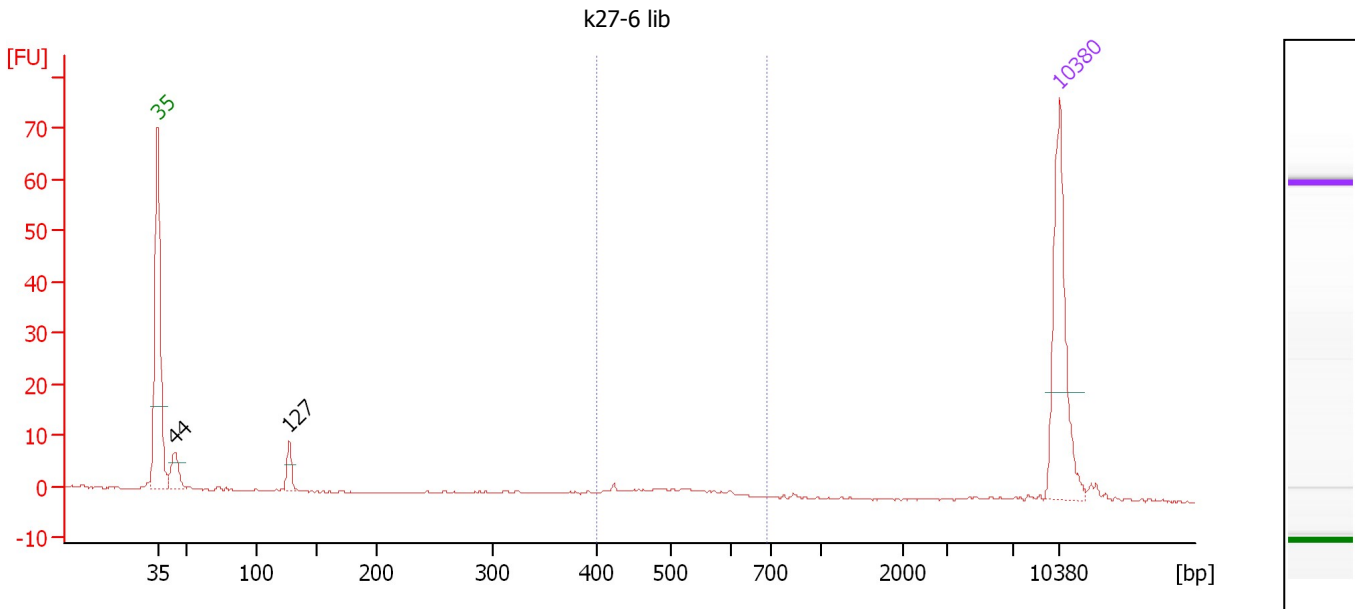
Region table for sample 9 : k27-5 lib

From [bp]	To [bp]	Average Size [bp]	Molarity [pmol/l]	Conc. [pg/μl]	Corr. Area	% of Total	Size distribution in CV [%]	Color
387	822	538	370.8	128.36	83.8	73	14.2	Blue

Assay Class: High Sensitivity DNA Assay
 Data Path: C:\...ents and Settings\Bioanalyzer\2012-08-09\2012-08-09_005.xad

Created: 8/9/2012 4:37:39 PM
 Modified: 8/9/2012 5:24:00 PM

Electropherogram Summary Continued ...



Overall Results for sample 10 : k27-6 lib

Number of peaks found: 2 Corr. Area 1: 9.6
 Noise: 0.1

Peak table for sample 10 : k27-6 lib

Peak	Size [bp]	Conc. [pg/μl]	Molarity [pmol/l]	Observations
1	35	125.00	5,411.3	Lower Marker
2	44	23.83	825.6	
3	127	15.29	182.6	
4	10,380	75.00	10.9	Upper Marker

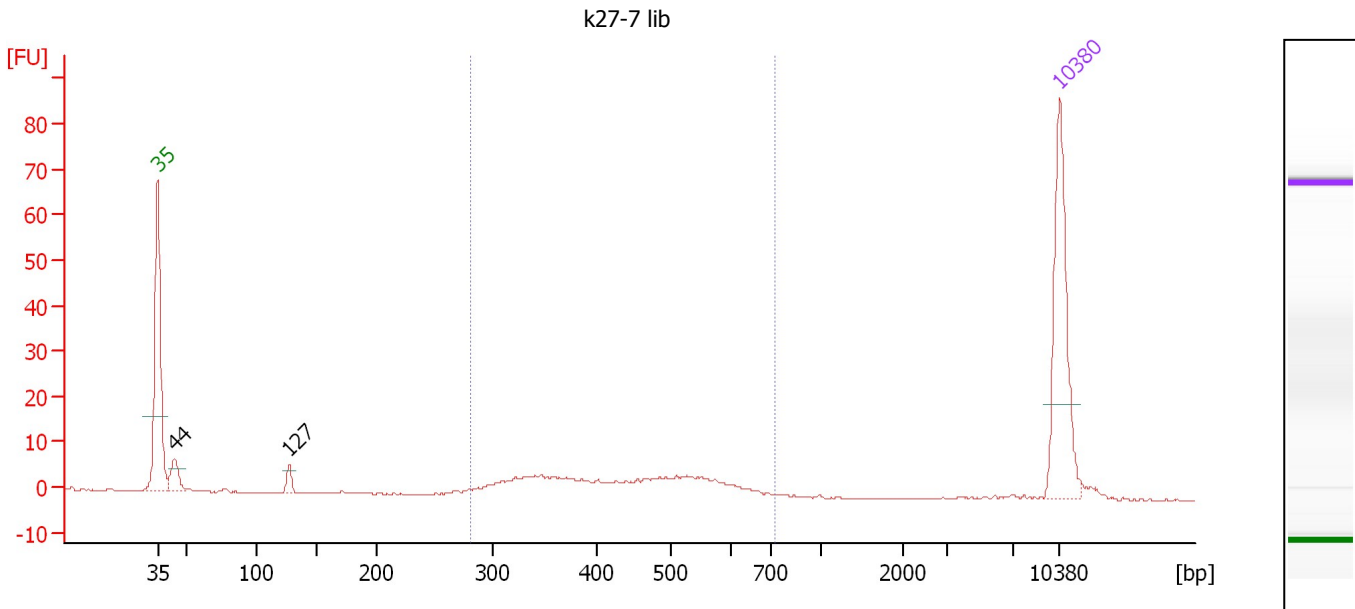
Region table for sample 10 : k27-6 lib

From [bp]	To [bp]	Average Size [bp]	Molarity [pmol/l]	Conc. [pg/μl]	Corr. Area	% of Total	Size distribution in CV [%]	Color
400	693	498	40.7	13.19	9.6	26	11.1	Blue

Assay Class: High Sensitivity DNA Assay
 Data Path: C:\...ents and Settings\Bioanalyzer\2012-08-09\2012-08-09_005.xad

Created: 8/9/2012 4:37:39 PM
 Modified: 8/9/2012 5:24:00 PM

Electropherogram Summary Continued ...



Overall Results for sample 11 : k27-7 lib

Number of peaks found: 2 Corr. Area 1: 63.7
 Noise: 0.1

Peak table for sample 11 : k27-7 lib

Peak	Size [bp]	Conc. [pg/μl]	Molarity [pmol/l]	Observations
1	35	125.00	5,411.3	Lower Marker
2	44	19.76	683.3	
3	127	8.33	99.5	
4	10,380	75.00	10.9	Upper Marker

Region table for sample 11 : k27-7 lib

From [bp]	To [bp]	Average Size [bp]	Molarity [pmol/l]	Conc. [pg/μl]	Corr. Area	% of Total	Size distribution in CV [%]	Color
280	721	444	276.2	75.93	63.7	81	21.3	Blue

Assay Class: High Sensitivity DNA Assay
Data Path: C:\...ents and Settings\Bioanalyzer\2012-08-09\2012-08-09_005.xad

Created: 8/9/2012 4:37:39 PM
Modified: 8/9/2012 5:24:00 PM

Gel Image

