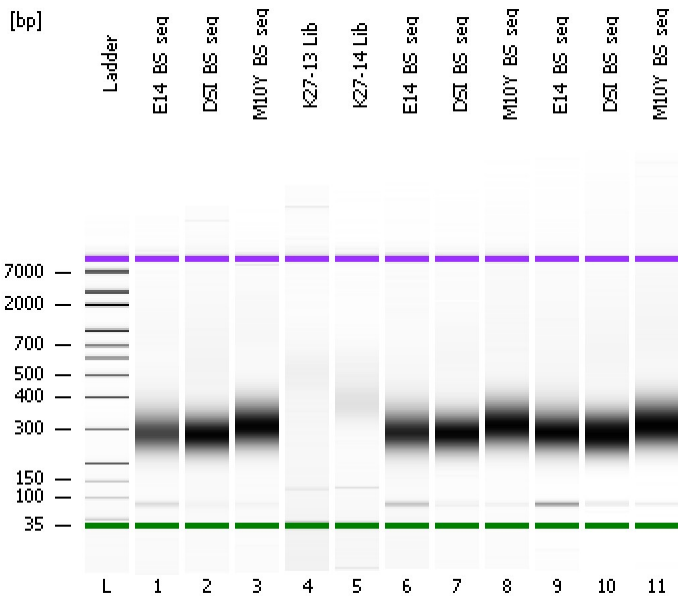


Assay Class: High Sensitivity DNA Assay
Data Path: C:\...ents and Settings\Bioanalyzer\2012-08-10\2012-08-10_001.xad

Created: 8/10/2012 9:59:53 AM
Modified: 8/10/2012 10:44:18 AM

Electrophoresis File Run Summary



Instrument Information:

Instrument Name: DE13701086 Firmware: C.01.069
Serial#: DE13701086 Type: G2938B

Assay Information:

Assay Origin Path: C:\Program Files\Agilent\2100 bioanalyzer\2100 expert\assays\dsDNA\High Sensitivity DNA.xsy
Assay Class: High Sensitivity DNA Assay
Version: 1.03
Assay Comments: Copyright © 2003-2010 Agilent Technologies

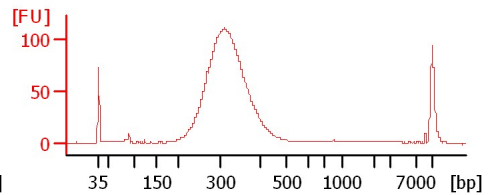
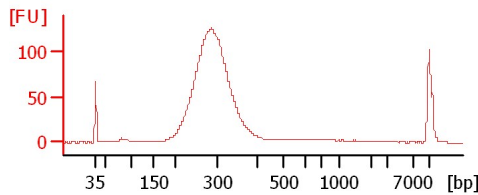
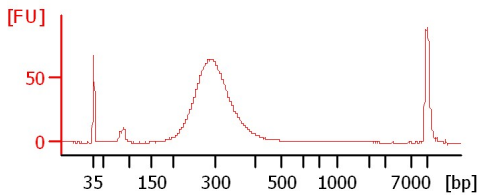
Chip Information:

Chip Lot #:
Reagent Kit Lot #:
Chip Comments:

E14_BS_seq

DSI_BS_seq

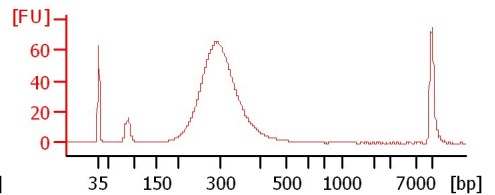
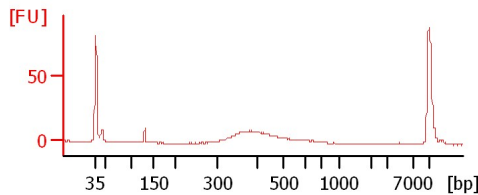
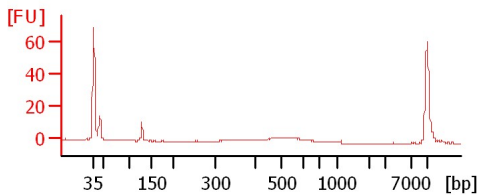
M10Y_BS_seq



K27-13 Lib

K27-14 Lib

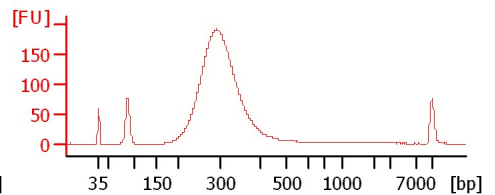
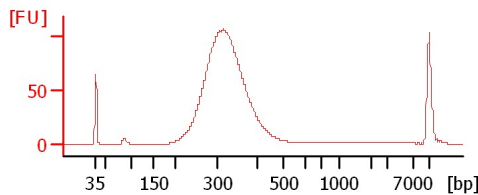
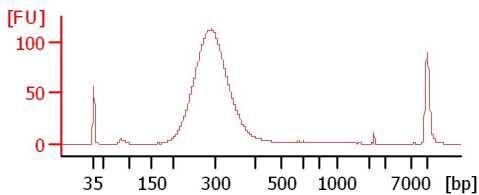
E14_BS_seq



DSI_BS_seq

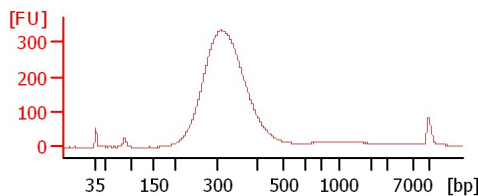
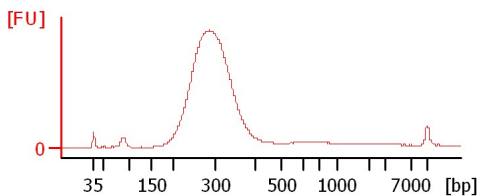
M10Y_BS_seq

E14_BS_seq



DSI_BS_seq

M10Y_BS_seq



Assay Class: High Sensitivity DNA Assay
Data Path: C:\...ents and Settings\Bioanalyzer\2012-08-10\2012-08-10_001.xad

Created: 8/10/2012 9:59:53 AM
Modified: 8/10/2012 10:44:18 AM

Electrophoresis File Run Summary (Chip Summary)

Sample Name	Sample Comment	Rest. Digest	Status	Observation	Result Label	Result Color
E14_BS_seq		<input type="checkbox"/>	✓			
DSI_BS_seq		<input type="checkbox"/>	✓			
M10Y_BS_seq		<input type="checkbox"/>	✓			
K27-13 Lib		<input type="checkbox"/>	✓			
K27-14 Lib		<input type="checkbox"/>	✓			
E14_BS_seq		<input type="checkbox"/>	✓			
DSI_BS_seq		<input type="checkbox"/>	✓			
M10Y_BS_seq		<input type="checkbox"/>	✓			
E14_BS_seq		<input type="checkbox"/>	✓			
DSI_BS_seq		<input type="checkbox"/>	✓			
M10Y_BS_seq		<input type="checkbox"/>	✓			
Ladder		<input type="checkbox"/>	✓			

Chip Lot #

Reagent Kit Lot #

Chip Comments :

Assay Class: High Sensitivity DNA Assay
Data Path: C:\...ents and Settings\Bioanalyzer\2012-08-10\2012-08-10_001.xad

Created: 8/10/2012 9:59:53 AM
Modified: 8/10/2012 10:44:18 AM

Electrophoresis Assay Details

General Analysis Settings

Number of Available Sample and Ladder Wells (Max.) : 12
Minimum Visible Range [s] : 32
Maximum Visible Range [s] : 138
Start Analysis Time Range [s] : 33
End Analysis Time Range [s] : 137.5
Ladder Concentration [pg/μl] : 1950
Uses Standard Area for Ladder Fragments
Lower Marker Concentration [pg/μl] : 125
Upper Marker Concentration [pg/μl] : 75
Used Upper Marker for Quantitation
Standard Curve Fit is Point to Point
Show Data Aligned to Lower and Upper Marker

Integrator Settings

Integration Start Time [s] : 33.05
Integration End Time [s] : 137
Slope Threshold : 0.8
Height Threshold [FU] : 5
Area Threshold : 0.1
Width Threshold [s] : 0.6
Baseline Plateau [s] : 0.5

Filter Settings

Filter Width [s] : 0.5
Polynomial Order : 4

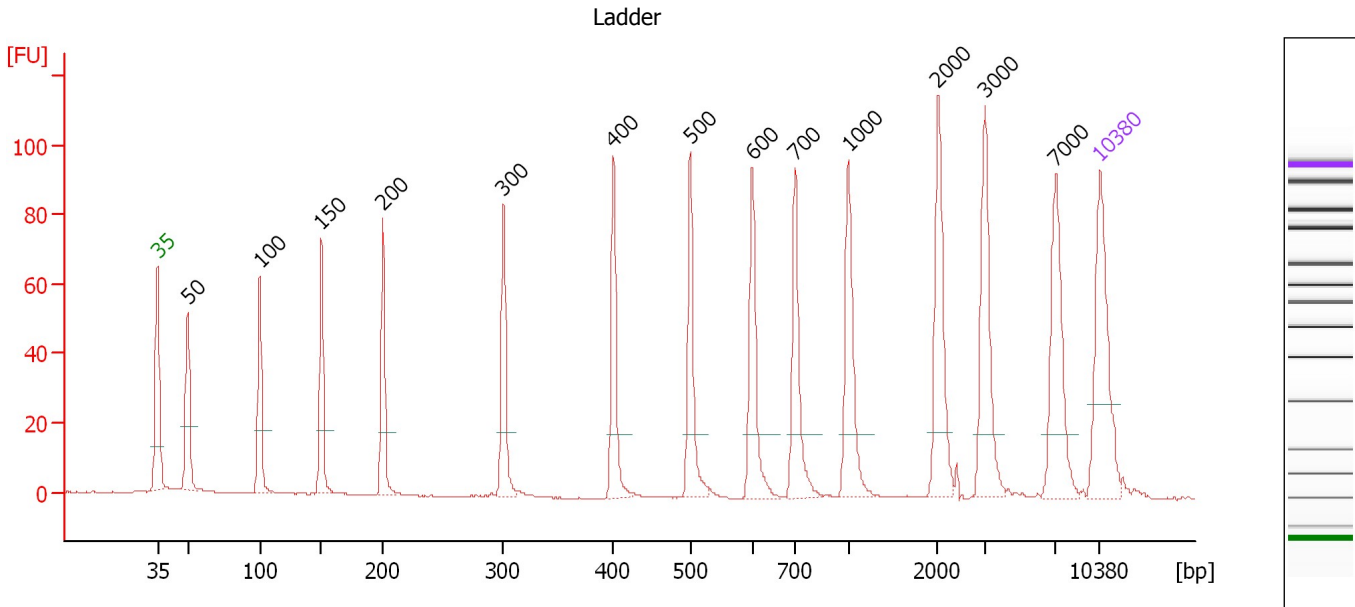
Ladder

Ladder Peak	Size	Area
1	35	160
2	50	210
3	100	208
4	150	221
5	200	242
6	300	270
7	400	305
8	500	306
9	600	336
10	700	321
11	1000	366
12	2000	413
13	3000	411
14	7000	400
15	10380	214

Assay Class: High Sensitivity DNA Assay
 Data Path: C:\...ents and Settings\Bioanalyzer\2012-08-10\2012-08-10_001.xad

Created: 8/10/2012 9:59:53 AM
 Modified: 8/10/2012 10:44:18 AM

Electropherogram Summary



Overall Results for Ladder

Noise: 0.1

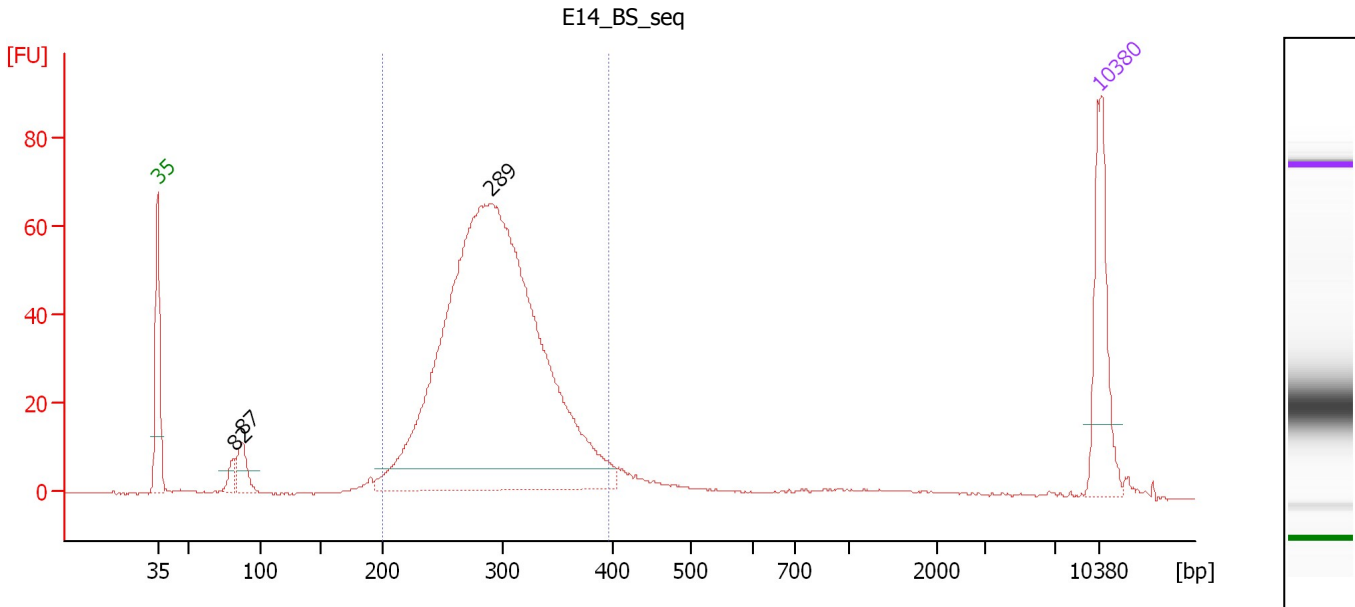
Peak table for Ladder

Peak	Size [bp]	Conc. [pg/μl]	Molarity [pmol/l]	Observations
1	35	125.00	5,411.3	Lower Marker
2	50	150.00	4,545.5	Ladder Peak
3	100	150.00	2,272.7	Ladder Peak
4	150	150.00	1,515.2	Ladder Peak
5	200	150.00	1,136.4	Ladder Peak
6	300	150.00	757.6	Ladder Peak
7	400	150.00	568.2	Ladder Peak
8	500	150.00	454.5	Ladder Peak
9	600	150.00	378.8	Ladder Peak
10	700	150.00	324.7	Ladder Peak
11	1,000	150.00	227.3	Ladder Peak
12	2,000	150.00	113.6	Ladder Peak
13	3,000	150.00	75.8	Ladder Peak
14	7,000	150.00	32.5	Ladder Peak
15	10,380	75.00	10.9	Upper Marker

Assay Class: High Sensitivity DNA Assay
 Data Path: C:\...ents and Settings\Bioanalyzer\2012-08-10\2012-08-10_001.xad

Created: 8/10/2012 9:59:53 AM
 Modified: 8/10/2012 10:44:18 AM

Electropherogram Summary Continued ...



Overall Results for sample 1 : E14_BS_seq

Number of peaks found: 3 Corr. Area 1: 851.3
 Noise: 0.2

Peak table for sample 1 : E14_BS_seq

Peak	Size [bp]	Conc. [pg/μl]	Molarity [pmol/l]	Observations
1	35	125.00	5,411.3	Lower Marker
2	82	14.82	274.7	
3	87	34.78	602.5	
4	289	1,129.16	5,927.9	
5	10,380	75.00	10.9	Upper Marker

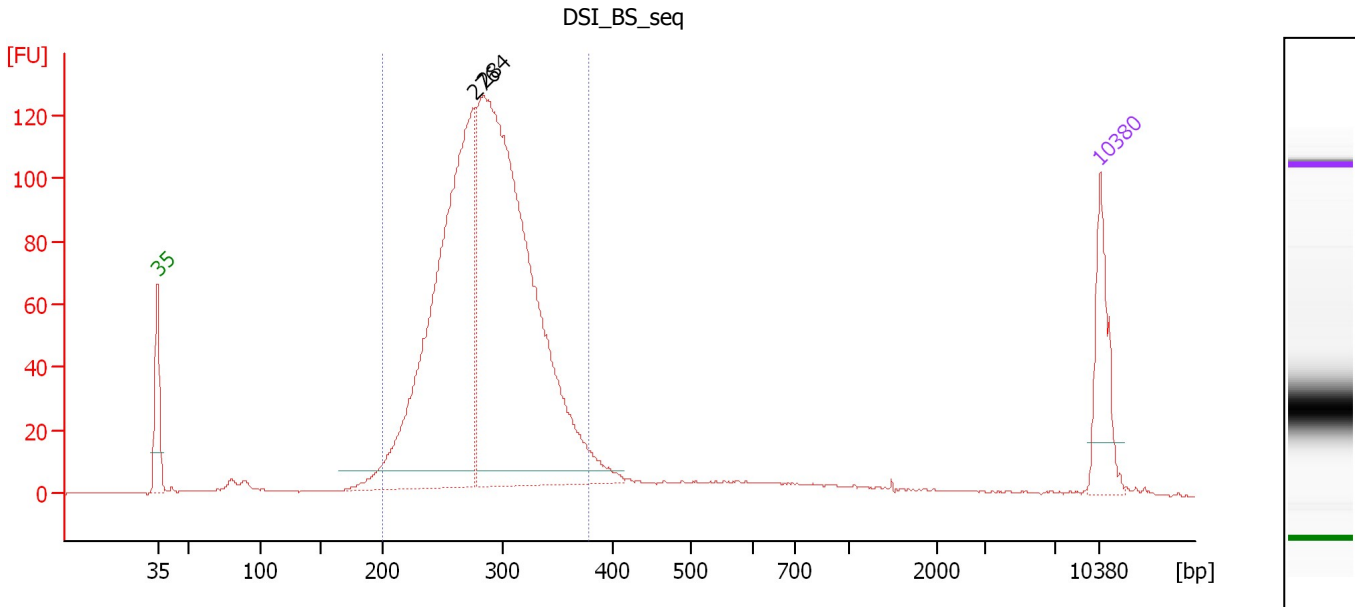
Region table for sample 1 : E14_BS_seq

From [bp]	To [bp]	Average Size [bp]	Molarity [pmol/l]	Conc. [pg/μl]	Corr. Area	% of Total	Size distribution in CV [%]	Color
200	395	293	5,949.5	1,130.23	851.3	91	13.4	Blue

Assay Class: High Sensitivity DNA Assay
 Data Path: C:\...ents and Settings\Bioanalyzer\2012-08-10\2012-08-10_001.xad

Created: 8/10/2012 9:59:53 AM
 Modified: 8/10/2012 10:44:18 AM

Electropherogram Summary Continued ...



Overall Results for sample 2 : DSI_BS_seq

Number of peaks found: 2 Corr. Area 1: 1,572.7
 Noise: 0.2

Peak table for sample 2 : DSI_BS_seq

Peak	Size [bp]	Conc. [pg/μl]	Molarity [pmol/l]	Observations
1	35	125.00	5,411.3	Lower Marker
2	276	801.13	4,402.5	
3	284	1,116.36	5,959.8	
4	10,380	75.00	10.9	Upper Marker

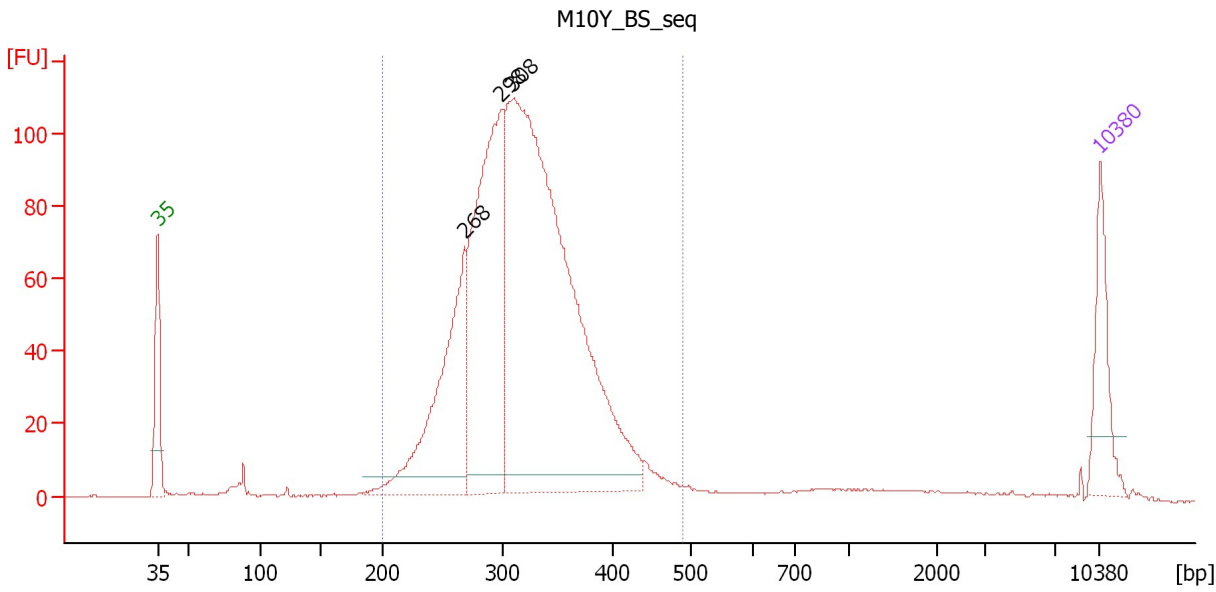
Region table for sample 2 : DSI_BS_seq

From [bp]	To [bp]	Average Size [bp]	Molarity [pmol/l]	Conc. [pg/μl]	Corr. Area	% of Total	Size distribution in CV [%]	Color
200	377	286	10,476.3	1,947.16	1,572.7	89	12.7	Blue

Assay Class: High Sensitivity DNA Assay
 Data Path: C:\...ents and Settings\Bioanalyzer\2012-08-10\2012-08-10_001.xad

Created: 8/10/2012 9:59:53 AM
 Modified: 8/10/2012 10:44:18 AM

Electropherogram Summary Continued ...



Overall Results for sample 3 : M10Y_BS_seq

Number of peaks found: 3 Corr. Area 1: 1,544.8
 Noise: 0.1

Peak table for sample 3 : M10Y_BS_seq

Peak	Size [bp]	Conc. [pg/μl]	Molarity [pmol/l]	Observations
1	35	125.00	5,411.3	Lower Marker
2	268	348.41	1,972.4	
3	298	519.49	2,638.9	
4	308	1,230.02	6,044.0	
5	10,380	75.00	10.9	Upper Marker

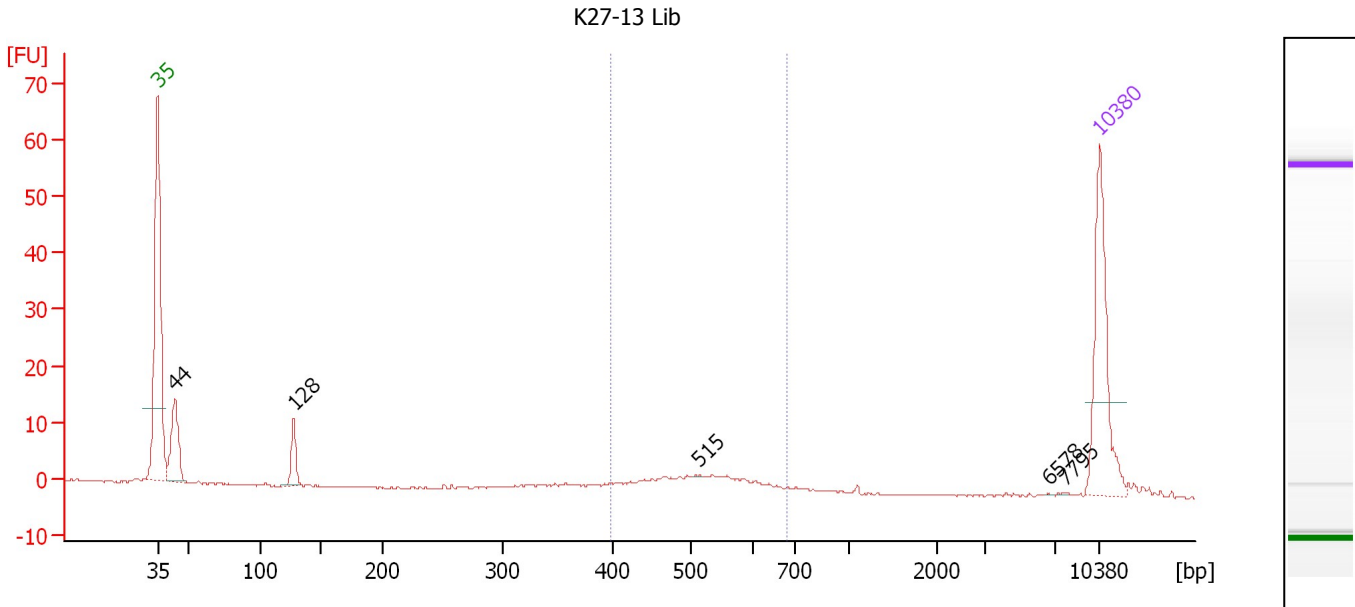
Region table for sample 3 : M10Y_BS_seq

From [bp]	To [bp]	Average Size [bp]	Molarity [pmol/l]	Conc. [pg/μl]	Corr. Area	% of Total	Size distribution in CV [%]	Color
200	491	318	10,435.4	2,126.82	1,544.8	93	15.1	Blue

Assay Class: High Sensitivity DNA Assay
 Data Path: C:\...ents and Settings\Bioanalyzer\2012-08-10\2012-08-10_001.xad

Created: 8/10/2012 9:59:53 AM
 Modified: 8/10/2012 10:44:18 AM

Electropherogram Summary Continued ...



Setpoint Deviations for sample 4 : K27-13 Lib

Height Threshold [FU] : 0.1

Overall Results for sample 4 : K27-13 Lib

Number of peaks found: 5 Corr. Area 1: 20.7
 Noise: 0.2

Peak table for sample 4 : K27-13 Lib

Peak	Size [bp]	Conc. [pg/μl]	Molarity [pmol/l]	Observations
1	35	125.00	5,411.3	Lower Marker
2	44	62.59	2,175.4	
3	128	23.35	277.2	
4	515	0.36	1.1	
5	6,578	0.18	0.0	
6	7,795	0.42	0.1	
7	10,380	75.00	10.9	Upper Marker

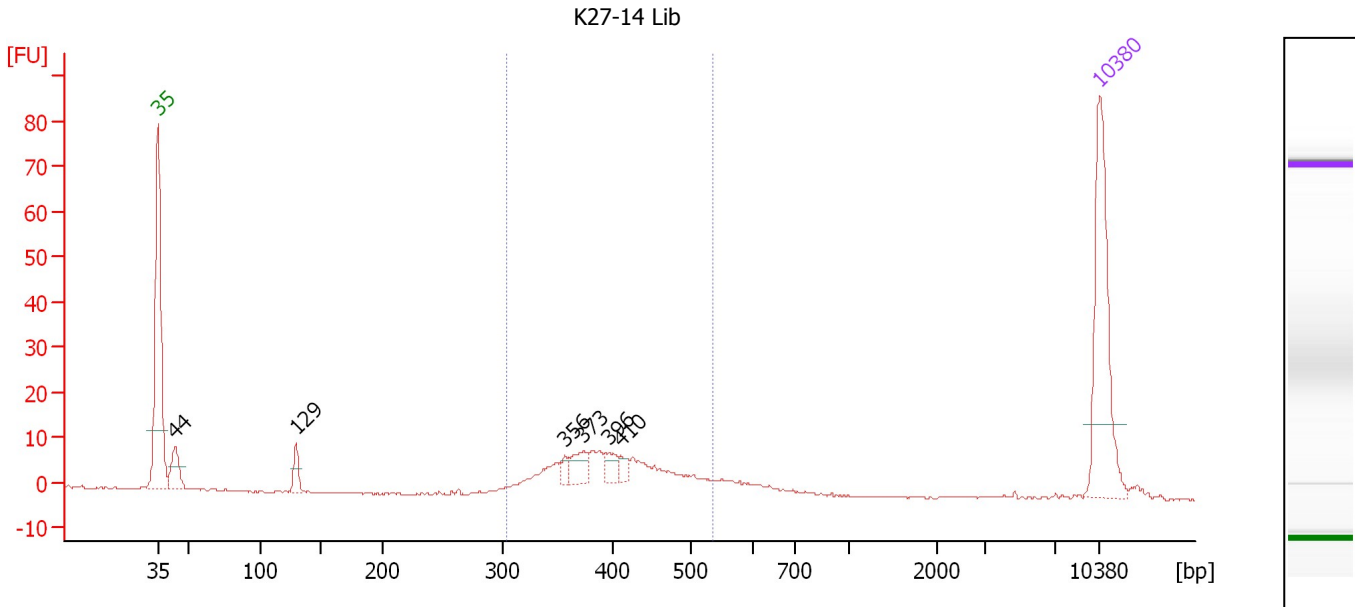
Region table for sample 4 : K27-13 Lib

From [bp]	To [bp]	Average Size [bp]	Molarity [pmol/l]	Conc. [pg/μl]	Corr. Area	% of Total	Size distribution in CV [%]	Color
397	678	515	112.2	37.52	20.7	36	11.6	Blue

Assay Class: High Sensitivity DNA Assay
 Data Path: C:\...ents and Settings\Bioanalyzer\2012-08-10\2012-08-10_001.xad

Created: 8/10/2012 9:59:53 AM
 Modified: 8/10/2012 10:44:18 AM

Electropherogram Summary Continued ...



Overall Results for sample 5 : K27-14 Lib

Number of peaks found: 6 Corr. Area 1: 120.2
 Noise: 0.1

Peak table for sample 5 : K27-14 Lib

Peak	Size [bp]	Conc. [pg/μl]	Molarity [pmol/l]	Observations
1	35	125.00	5,411.3	Lower Marker
2	44	25.50	882.1	
3	129	13.99	164.0	
4	356	6.08	25.9	
5	373	15.27	62.0	
6	396	9.57	36.7	
7	410	6.44	23.8	
8	10,380	75.00	10.9	Upper Marker

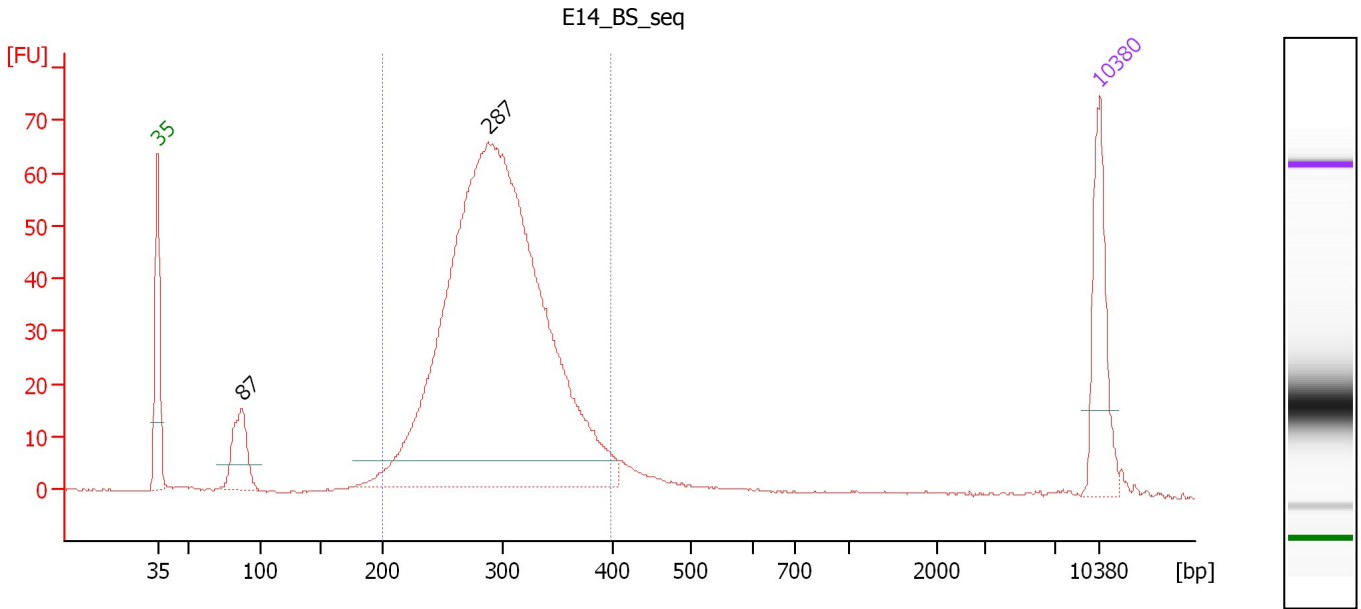
Region table for sample 5 : K27-14 Lib

From [bp]	To [bp]	Average Size [bp]	Molarity [pmol/l]	Conc. [pg/μl]	Corr. Area	% of Total	Size distribution in CV [%]	Color
302	535	404	557.3	145.54	120.2	68	13.4	Blue

Assay Class: High Sensitivity DNA Assay
 Data Path: C:\...ents and Settings\Bioanalyzer\2012-08-10\2012-08-10_001.xad

Created: 8/10/2012 9:59:53 AM
 Modified: 8/10/2012 10:44:18 AM

Electropherogram Summary Continued ...



Overall Results for sample 6 : E14 BS seq

Number of peaks found: 2 Corr. Area 1: 831.7
 Noise: 0.1

Peak table for sample 6 : E14 BS seq

Peak	Size [bp]	Conc. [pg/μl]	Molarity [pmol/l]	Observations
1	35	125.00	5,411.3	Lower Marker
2	87	83.82	1,455.3	
3	287	1,310.49	6,915.3	
4	10,380	75.00	10.9	Upper Marker

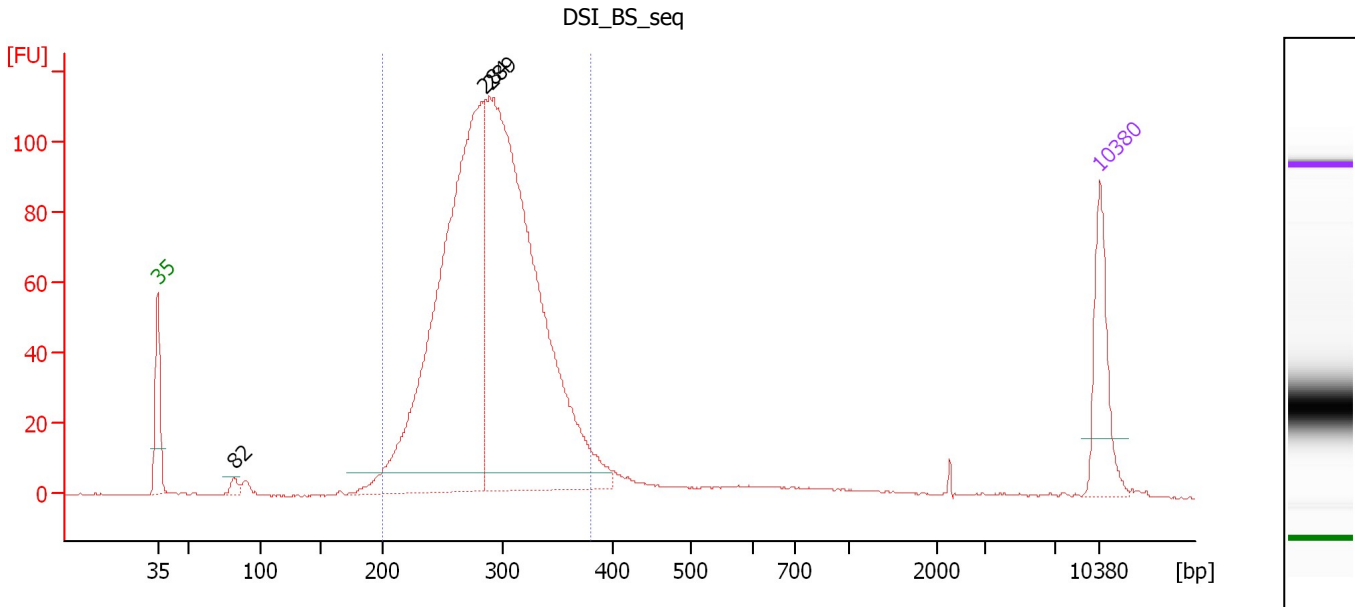
Region table for sample 6 : E14 BS seq

From [bp]	To [bp]	Average Size [bp]	Molarity [pmol/l]	Conc. [pg/μl]	Corr. Area	% of Total	Size distribution in CV [%]	Color
200	398	296	6,883.4	1,318.60	831.7	88	13.5	Blue

Assay Class: High Sensitivity DNA Assay
 Data Path: C:\...ents and Settings\Bioanalyzer\2012-08-10\2012-08-10_001.xad

Created: 8/10/2012 9:59:53 AM
 Modified: 8/10/2012 10:44:18 AM

Electropherogram Summary Continued ...



Overall Results for sample 7 : DSI_BS_seq

Number of peaks found: 3 Corr. Area 1: 1,371.3
 Noise: 0.2

Peak table for sample 7 : DSI_BS_seq

Peak	Size [bp]	Conc. [pg/μl]	Molarity [pmol/l]	Observations
1	35	125.00	5,411.3	Lower Marker
2	82	11.15	205.9	
3	284	881.34	4,702.5	
4	289	980.47	5,140.1	
5	10,380	75.00	10.9	Upper Marker

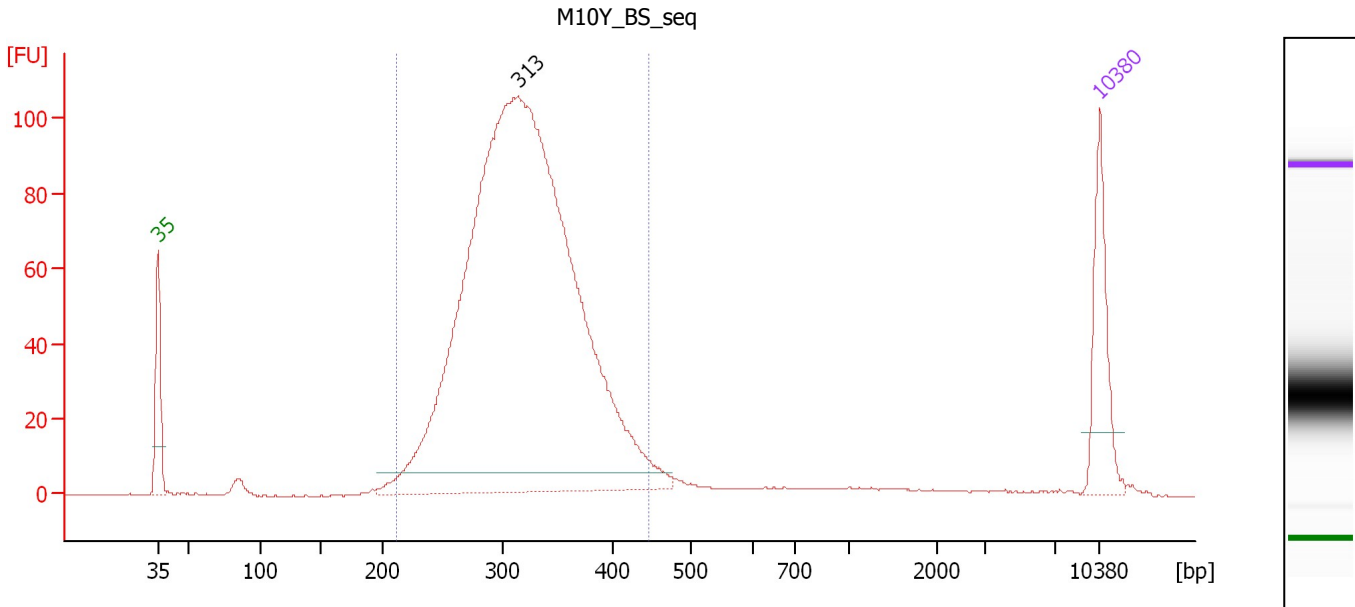
Region table for sample 7 : DSI_BS_seq

From [bp]	To [bp]	Average Size [bp]	Molarity [pmol/l]	Conc. [pg/μl]	Corr. Area	% of Total	Size distribution in CV [%]	Color
200	379	289	9,890.7	1,856.35	1,371.3	91	12.6	Blue

Assay Class: High Sensitivity DNA Assay
 Data Path: C:\...ents and Settings\Bioanalyzer\2012-08-10\2012-08-10_001.xad

Created: 8/10/2012 9:59:53 AM
 Modified: 8/10/2012 10:44:18 AM

Electropherogram Summary Continued ...



Overall Results for sample 8 : M10Y_BS_seq

Number of peaks found: 1 Corr. Area 1: 1,428.9
 Noise: 0.2

Peak table for sample 8 : M10Y_BS_seq

Peak	Size [bp]	Conc. [pg/μl]	Molarity [pmol/l]	Observations
1	35	125.00	5,411.3	Lower Marker
2	313	1,711.26	8,272.4	
3	10,380	75.00	10.9	Upper Marker

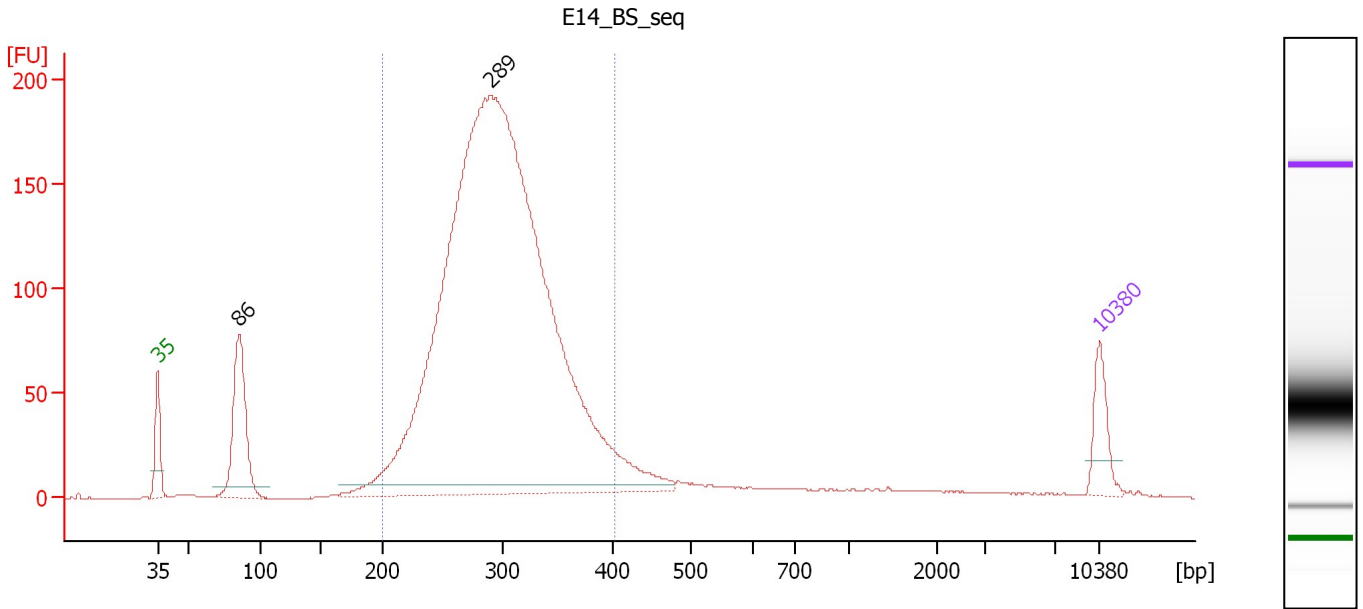
Region table for sample 8 : M10Y_BS_seq

From [bp]	To [bp]	Average Size [bp]	Molarity [pmol/l]	Conc. [pg/μl]	Corr. Area	% of Total	Size distribution in CV [%]	Color
212	445	319	8,352.0	1,714.71	1,428.9	93	14.0	Blue

Assay Class: High Sensitivity DNA Assay
 Data Path: C:\...ents and Settings\Bioanalyzer\2012-08-10\2012-08-10_001.xad

Created: 8/10/2012 9:59:53 AM
 Modified: 8/10/2012 10:44:18 AM

Electropherogram Summary Continued ...



Overall Results for sample 9 : E14 BS seq

Number of peaks found: 2 Corr. Area 1: 2,430.8
 Noise: 0.2

Peak table for sample 9 : E14 BS seq

Peak	Size [bp]	Conc. [pg/μl]	Molarity [pmol/l]	Observations
1	35	125.00	5,411.3	Lower Marker
2	86	364.62	6,441.9	
3	289	4,164.70	21,800.5	
4	10,380	75.00	10.9	Upper Marker

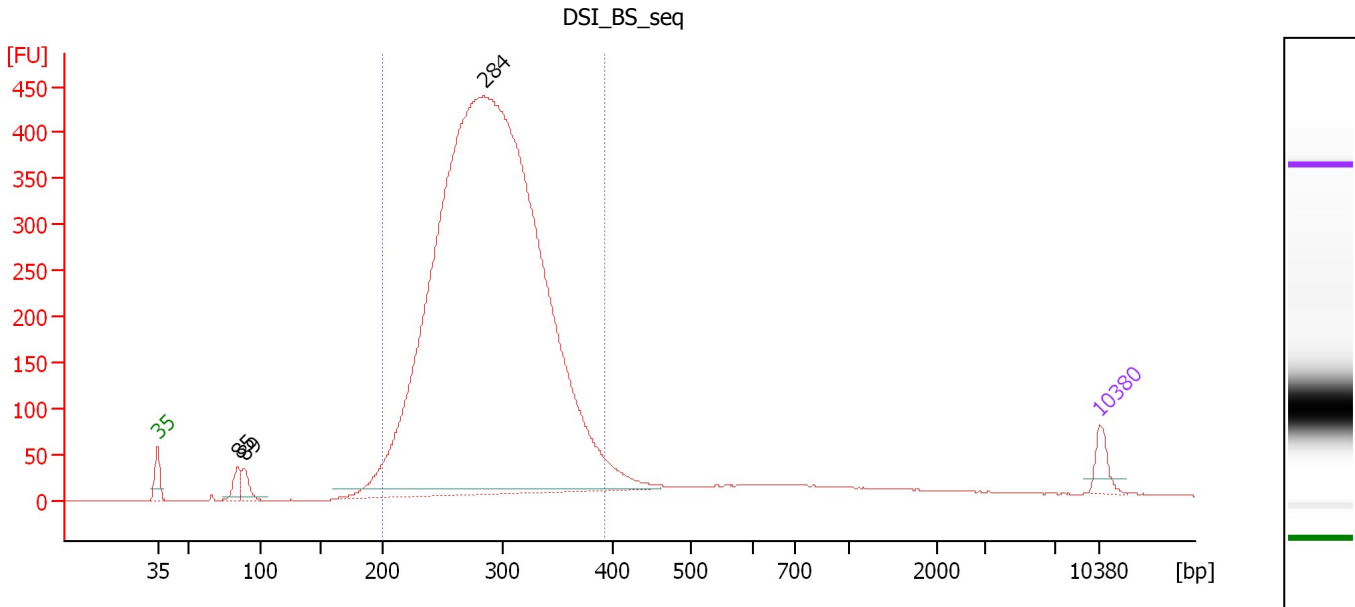
Region table for sample 9 : E14 BS seq

From [bp]	To [bp]	Average Size [bp]	Molarity [pmol/l]	Conc. [pg/μl]	Corr. Area	% of Total	Size distribution in CV [%]	Color
200	401	296	20,900.3	4,006.97	2,430.8	86	13.7	Blue

Assay Class: High Sensitivity DNA Assay
 Data Path: C:\...ents and Settings\Bioanalyzer\2012-08-10\2012-08-10_001.xad

Created: 8/10/2012 9:59:53 AM
 Modified: 8/10/2012 10:44:18 AM

Electropherogram Summary Continued ...



Overall Results for sample 10 : DSI_BS_seq

Number of peaks found: 3 Corr. Area 1: 6,044.8
 Noise: 0.3

Peak table for sample 10 : DSI_BS_seq

Peak	Size [bp]	Conc. [pg/μl]	Molarity [pmol/l]	Observations
1	35	125.00	5,411.3	Lower Marker
2	85	100.71	1,804.9	
3	89	107.98	1,830.8	
4	284	10,585.47	56,536.0	
5	10,380	75.00	10.9	Upper Marker

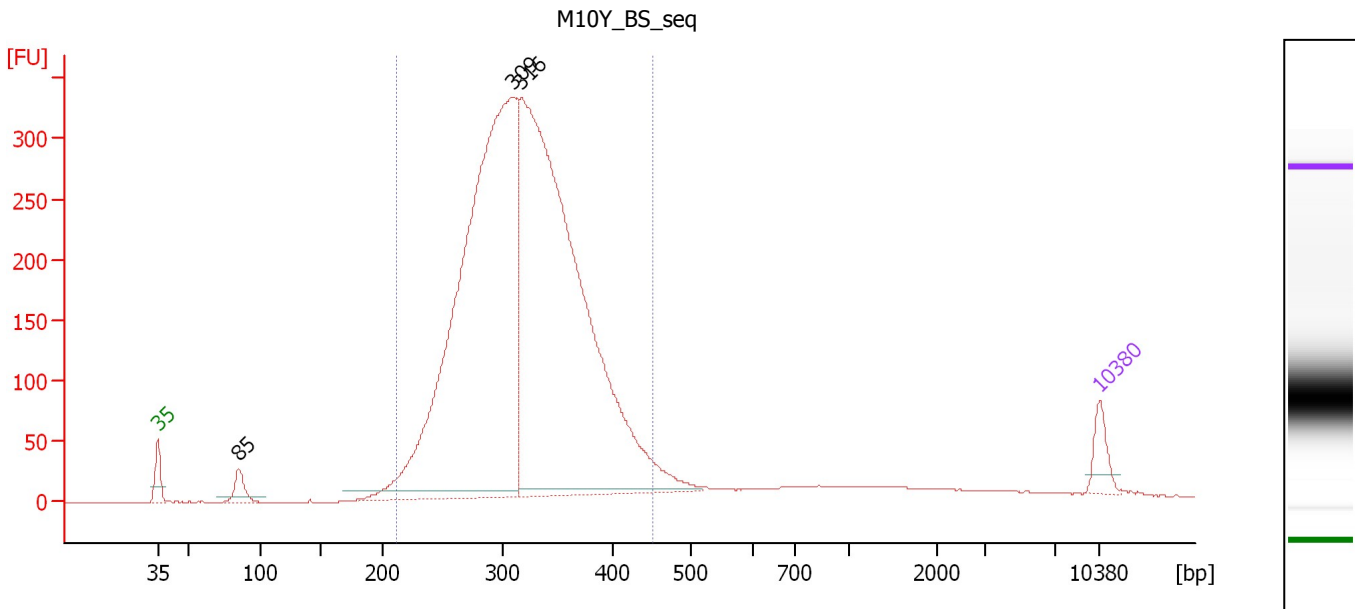
Region table for sample 10 : DSI_BS_seq

From [bp]	To [bp]	Average Size [bp]	Molarity [pmol/l]	Conc. [pg/μl]	Corr. Area	% of Total	Size distribution in CV [%]	Color
200	392	290	56,069.9	10,510.52	6,044.8	89	13.8	Blue

Assay Class: High Sensitivity DNA Assay
 Data Path: C:\...ents and Settings\Bioanalyzer\2012-08-10\2012-08-10_001.xad

Created: 8/10/2012 9:59:53 AM
 Modified: 8/10/2012 10:44:18 AM

Electropherogram Summary Continued ...



Overall Results for sample 11 : M10Y_BS_seq

Number of peaks found: 3 Corr. Area 1: 4,716.2
 Noise: 0.3

Peak table for sample 11 : M10Y_BS_seq

Peak	Size [bp]	Conc. [pg/μl]	Molarity [pmol/l]	Observations
1	35	125.00	5,411.3	Lower Marker
2	85	101.48	1,801.4	
3	309	3,638.37	17,858.7	
4	316	3,711.06	17,775.8	
5	10,380	75.00	10.9	Upper Marker

Region table for sample 11 : M10Y_BS_seq

From [bp]	To [bp]	Average Size [bp]	Molarity [pmol/l]	Conc. [pg/μl]	Corr. Area	% of Total	Size distribution in CV [%]	Color
211	452	319	35,857.4	7,348.22	4,716.2	91	14.6	Blue

Assay Class: High Sensitivity DNA Assay
Data Path: C:\...ents and Settings\Bioanalyzer\2012-08-10\2012-08-10_001.xad

Created: 8/10/2012 9:59:53 AM
Modified: 8/10/2012 10:44:18 AM

Gel Image

