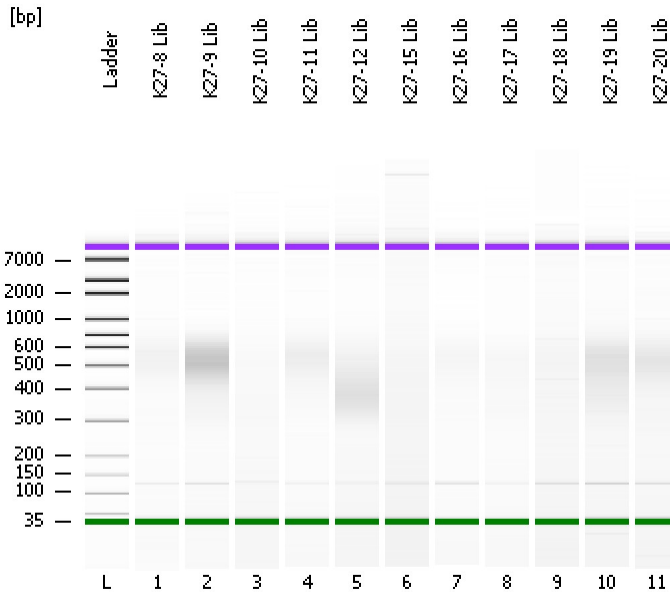


Assay Class: High Sensitivity DNA Assay
Data Path: C:\...ents and Settings\Bioanalyzer\2012-08-10\2012-08-10_002.xad

Created: 8/10/2012 11:01:59 AM
Modified: 8/10/2012 11:54:57 AM

Electrophoresis File Run Summary



Instrument Information:

Instrument Name: DE13701086 Firmware: C.01.069
Serial#: DE13701086 Type: G2938B

Assay Information:

Assay Origin Path: C:\Program Files\Agilent\2100 bioanalyzer\2100 expert\assays\dsDNA\High Sensitivity DNA.xsy
Assay Class: High Sensitivity DNA Assay
Version: 1.03
Assay Comments: Copyright © 2003-2010 Agilent Technologies

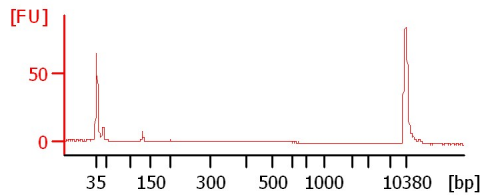
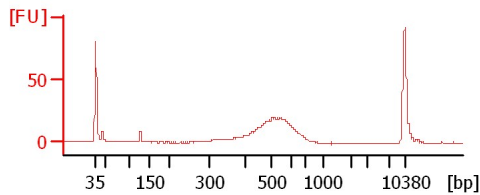
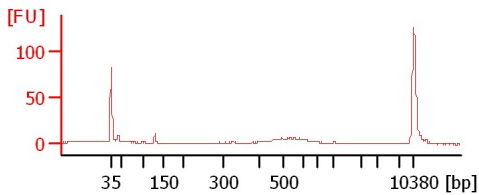
Chip Information:

Chip Lot #: Reagent Kit Lot #: Chip Comments:

K27-8 Lib

K27-9 Lib

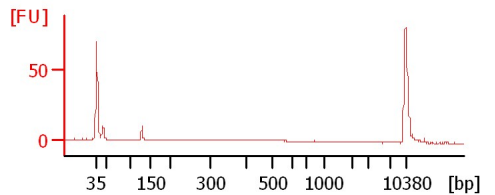
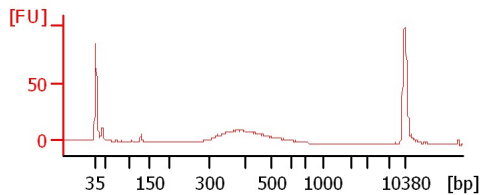
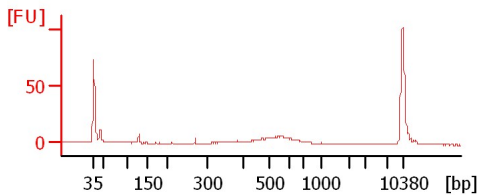
K27-10 Lib



K27-11 Lib

K27-12 Lib

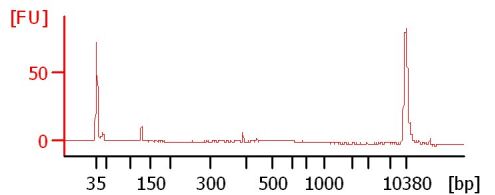
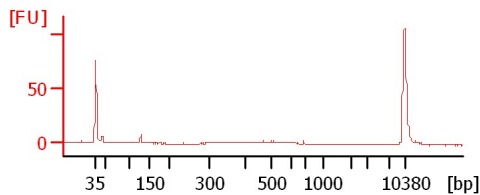
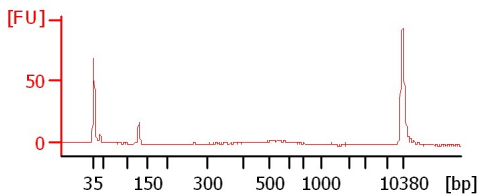
K27-15 Lib



K27-16 Lib

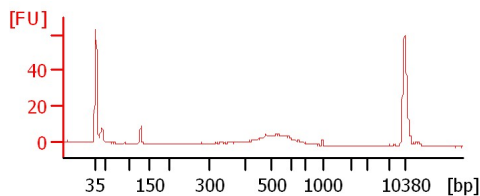
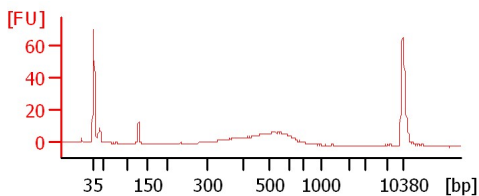
K27-17 Lib

K27-18 Lib



K27-19 Lib

K27-20 Lib



Assay Class: High Sensitivity DNA Assay
 Data Path: C:\...ents and Settings\Bioanalyzer\2012-08-10\2012-08-10_002.xad

Created: 8/10/2012 11:01:59 AM
 Modified: 8/10/2012 11:54:57 AM

Electrophoresis File Run Summary (Chip Summary)

Sample Name	Sample Comment	Rest. Digest	Status	Observation	Result Label	Result Color
K27-8 Lib		<input type="checkbox"/>	✓			
K27-9 Lib		<input type="checkbox"/>	✓			
K27-10 Lib		<input type="checkbox"/>	✓			
K27-11 Lib		<input type="checkbox"/>	✓			
K27-12 Lib		<input type="checkbox"/>	✓			
K27-15 Lib		<input type="checkbox"/>	✓			
K27-16 Lib		<input type="checkbox"/>	✓			
K27-17 Lib		<input type="checkbox"/>	✓			
K27-18 Lib		<input type="checkbox"/>	✓			
K27-19 Lib		<input type="checkbox"/>	✓			
K27-20 Lib		<input type="checkbox"/>	✓			
Ladder		<input type="checkbox"/>	✓			

Chip Lot #

Reagent Kit Lot #

Chip Comments :

Assay Class: High Sensitivity DNA Assay
Data Path: C:\...ents and Settings\Bioanalyzer\2012-08-10\2012-08-10_002.xad

Created: 8/10/2012 11:01:59 AM
Modified: 8/10/2012 11:54:57 AM

Electrophoresis Assay Details

General Analysis Settings

Number of Available Sample and Ladder Wells (Max.) : 12
Minimum Visible Range [s] : 32
Maximum Visible Range [s] : 138
Start Analysis Time Range [s] : 33
End Analysis Time Range [s] : 137.5
Ladder Concentration [pg/μl] : 1950
Uses Standard Area for Ladder Fragments
Lower Marker Concentration [pg/μl] : 125
Upper Marker Concentration [pg/μl] : 75
Used Upper Marker for Quantitation
Standard Curve Fit is Point to Point
Show Data Aligned to Lower and Upper Marker

Integrator Settings

Integration Start Time [s] : 33.05
Integration End Time [s] : 137
Slope Threshold : 0.8
Height Threshold [FU] : 5
Area Threshold : 0.1
Width Threshold [s] : 0.6
Baseline Plateau [s] : 0.5

Filter Settings

Filter Width [s] : 0.5
Polynomial Order : 4

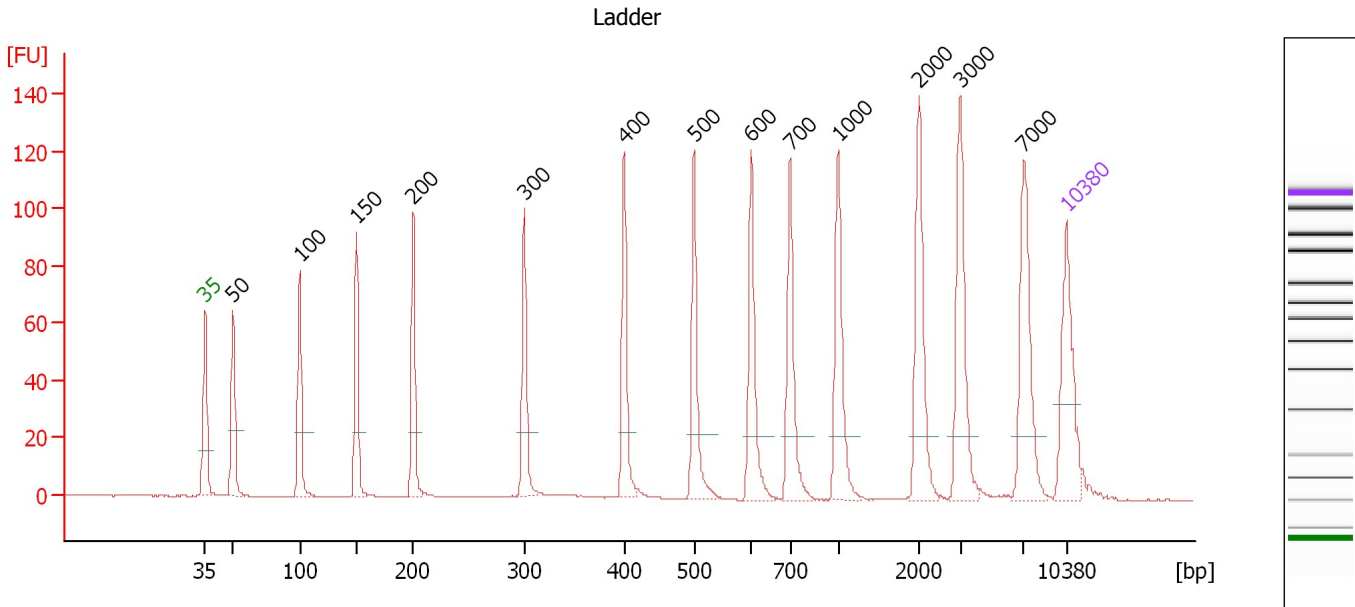
Ladder

Ladder Peak	Size	Area
1	35	160
2	50	210
3	100	208
4	150	221
5	200	242
6	300	270
7	400	305
8	500	306
9	600	336
10	700	321
11	1000	366
12	2000	413
13	3000	411
14	7000	400
15	10380	214

Assay Class: High Sensitivity DNA Assay
 Data Path: C:\...ents and Settings\Bioanalyzer\2012-08-10\2012-08-10_002.xad

Created: 8/10/2012 11:01:59 AM
 Modified: 8/10/2012 11:54:57 AM

Electropherogram Summary



Overall Results for Ladder

Noise: 0.1

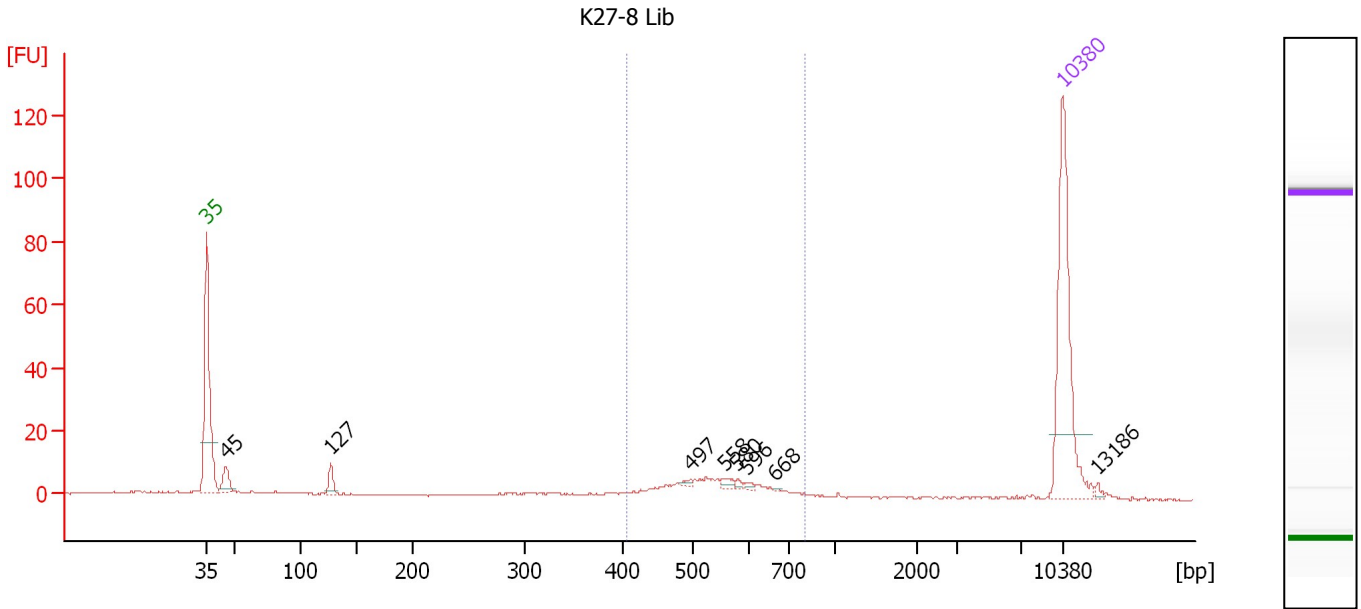
Peak table for Ladder

Peak	Size [bp]	Conc. [pg/μl]	Molarity [pmol/l]	Observations
1	35	125.00	5,411.3	Lower Marker
2	50	150.00	4,545.5	Ladder Peak
3	100	150.00	2,272.7	Ladder Peak
4	150	150.00	1,515.2	Ladder Peak
5	200	150.00	1,136.4	Ladder Peak
6	300	150.00	757.6	Ladder Peak
7	400	150.00	568.2	Ladder Peak
8	500	150.00	454.5	Ladder Peak
9	600	150.00	378.8	Ladder Peak
10	700	150.00	324.7	Ladder Peak
11	1,000	150.00	227.3	Ladder Peak
12	2,000	150.00	113.6	Ladder Peak
13	3,000	150.00	75.8	Ladder Peak
14	7,000	150.00	32.5	Ladder Peak
15	10,380	75.00	10.9	Upper Marker

Assay Class: High Sensitivity DNA Assay
 Data Path: C:\...ents and Settings\Bioanalyzer\2012-08-10\2012-08-10_002.xad

Created: 8/10/2012 11:01:59 AM
 Modified: 8/10/2012 11:54:57 AM

Electropherogram Summary Continued ...



Setpoint Deviations for sample 1 : K27-8 Lib

Height Threshold [FU] : 1

Overall Results for sample 1 : K27-8 Lib

Number of peaks found: 8 Corr. Area 1: 67.4
 Noise: 0.1

Peak table for sample 1 : K27-8 Lib

Peak	Size [bp]	Conc. [pg/μl]	Molarity [pmol/l]	Observations
1	35	125.00	5,411.3	Lower Marker
2	45	14.47	482.6	
3	127	9.45	112.8	
4	497	1.66	5.1	
5	558	3.28	8.9	
6	580	1.42	3.7	
7	596	1.49	3.8	
8	668	0.47	1.1	
9	10,380	75.00	10.9	Upper Marker
10	13,186	0.00	0.0	

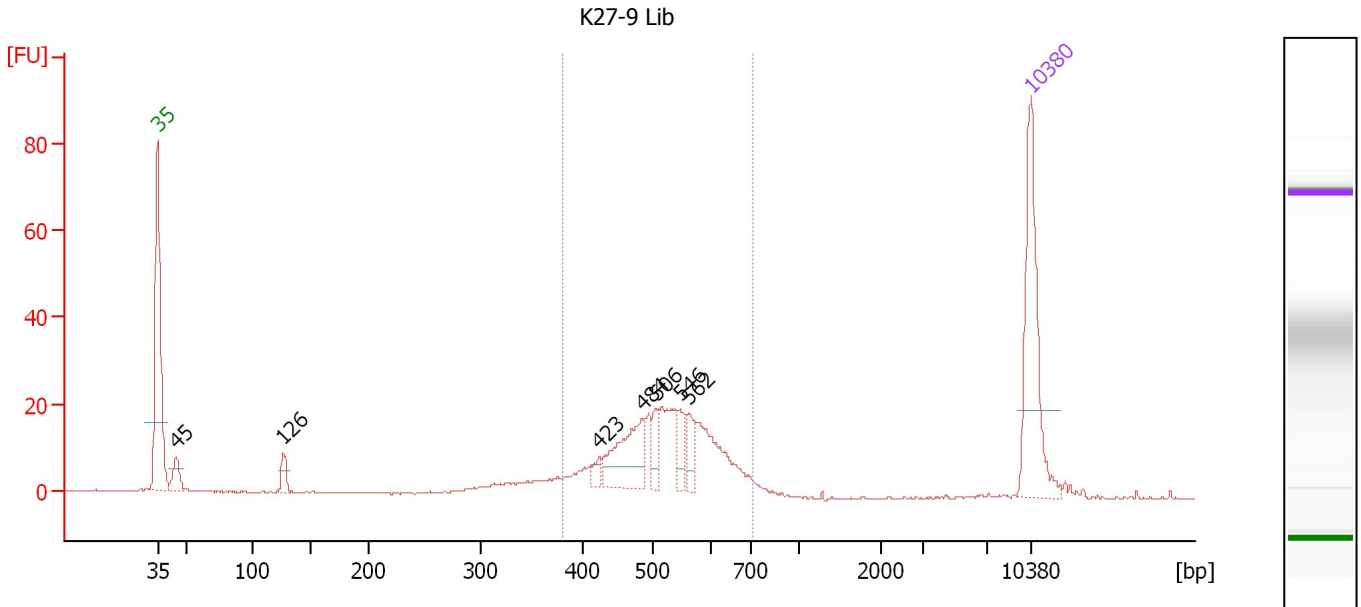
Region table for sample 1 : K27-8 Lib

From [bp]	To [bp]	Average Size [bp]	Molarity [pmol/l]	Conc. [pg/μl]	Corr. Area	% of Total	Size distribution in CV [%]	Color
404	806	547	154.0	54.19	67.4	48	14.4	Blue

Assay Class: High Sensitivity DNA Assay
 Data Path: C:\...ents and Settings\Bioanalyzer\2012-08-10\2012-08-10_002.xad

Created: 8/10/2012 11:01:59 AM
 Modified: 8/10/2012 11:54:57 AM

Electropherogram Summary Continued ...



Overall Results for sample 2 : K27-9 Lib

Number of peaks found: 7 Corr. Area 1: 230.6
 Noise: 0.2

Peak table for sample 2 : K27-9 Lib

Peak	Size [bp]	Conc. [pg/μl]	Molarity [pmol/l]	Observations
1	35	125.00	5,411.3	Lower Marker
2	45	20.13	680.5	
3	126	13.80	166.3	
4	423	6.89	24.7	
5	484	56.59	177.1	
6	506	16.13	48.4	
7	546	14.20	39.4	
8	562	13.10	35.3	
9	10,380	75.00	10.9	Upper Marker

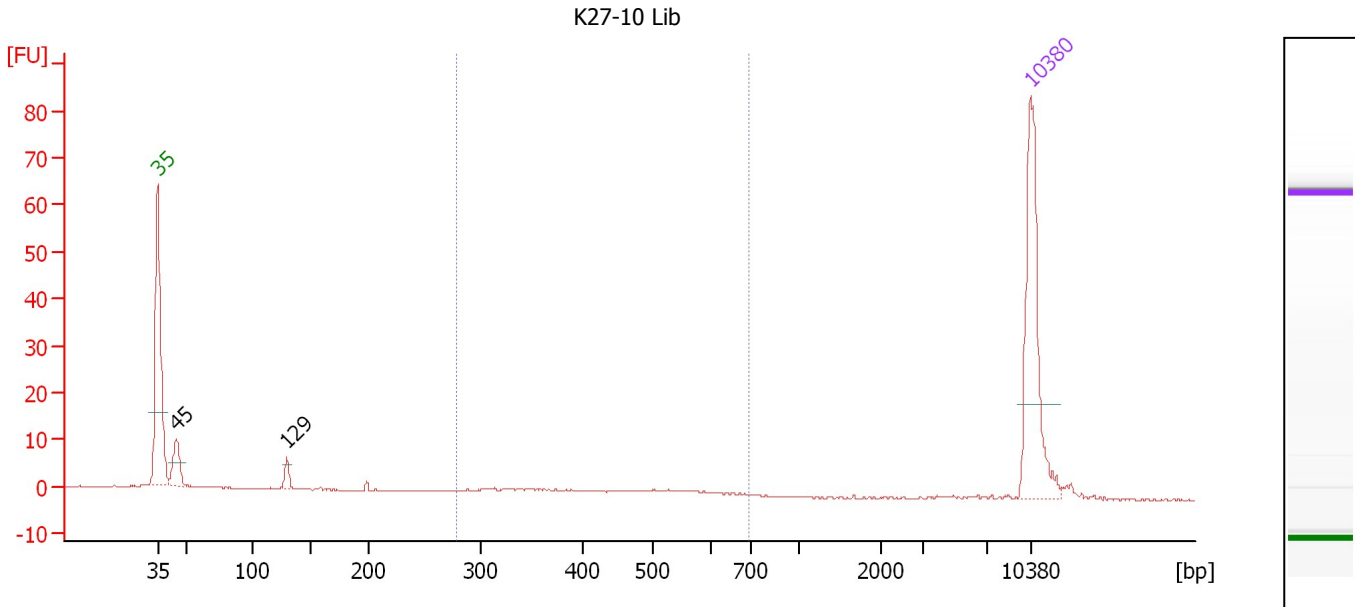
Region table for sample 2 : K27-9 Lib

From [bp]	To [bp]	Average Size [bp]	Molarity [pmol/l]	Conc. [pg/μl]	Corr. Area	% of Total	Size distribution in CV [%]	Color
381	712	523	762.9	256.87	230.6	77	13.7	Blue

Assay Class: High Sensitivity DNA Assay
 Data Path: C:\...ents and Settings\Bioanalyzer\2012-08-10\2012-08-10_002.xad

Created: 8/10/2012 11:01:59 AM
 Modified: 8/10/2012 11:54:57 AM

Electropherogram Summary Continued ...



Overall Results for sample 3 : K27-10 Lib

Number of peaks found: 2 Corr. Area 1: 20.1
 Noise: 0.1

Peak table for sample 3 : K27-10 Lib

Peak	Size [bp]	Conc. [pg/μl]	Molarity [pmol/l]	Observations
1	35	125.00	5,411.3	Lower Marker
2	45	26.68	897.7	
3	129	8.40	98.7	
4	10,380	75.00	10.9	Upper Marker

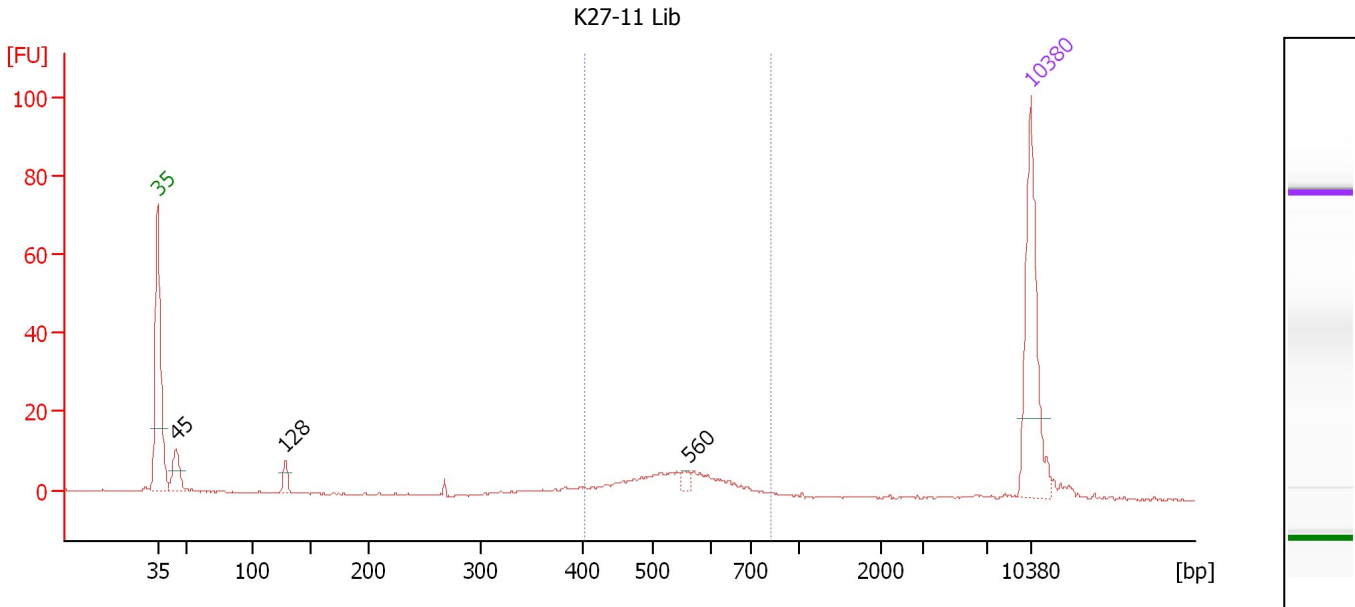
Region table for sample 3 : K27-10 Lib

From [bp]	To [bp]	Average Size [bp]	Molarity [pmol/l]	Conc. [pg/μl]	Corr. Area	% of Total	Size distribution in CV [%]	Color
278	694	443	91.4	24.62	20.1	29	23.6	Blue

Assay Class: High Sensitivity DNA Assay
 Data Path: C:\...ents and Settings\Bioanalyzer\2012-08-10\2012-08-10_002.xad

Created: 8/10/2012 11:01:59 AM
 Modified: 8/10/2012 11:54:57 AM

Electropherogram Summary Continued ...



Overall Results for sample 4 : K27-11 Lib

Number of peaks found: 3 Corr. Area 1: 66.3
 Noise: 0.1

Peak table for sample 4 : K27-11 Lib

Peak	Size [bp]	Conc. [pg/μl]	Molarity [pmol/l]	Observations
1	35	125.00	5,411.3	Lower Marker
2	45	28.19	950.1	
3	128	10.34	122.7	
4	560	4.97	13.4	
5	10,380	75.00	10.9	Upper Marker

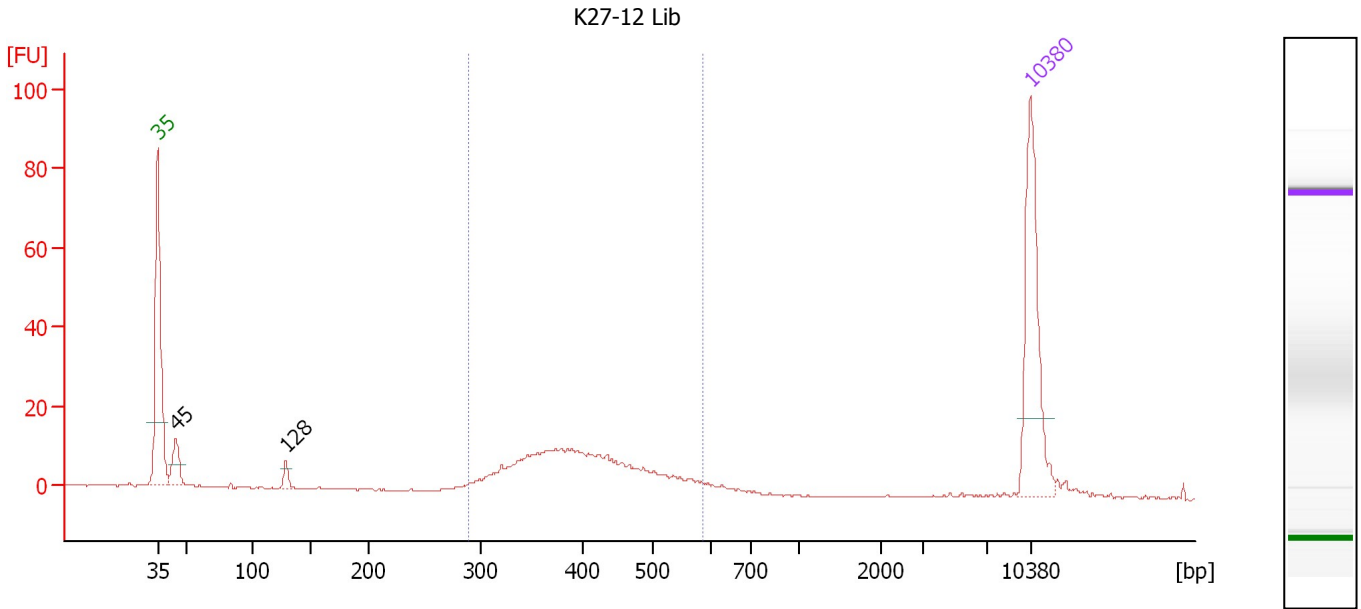
Region table for sample 4 : K27-11 Lib

From [bp]	To [bp]	Average Size [bp]	Molarity [pmol/l]	Conc. [pg/μl]	Corr. Area	% of Total	Size distribution in CV [%]	Color
402	826	546	206.5	72.46	66.3	59	14.6	Blue

Assay Class: High Sensitivity DNA Assay
 Data Path: C:\...ents and Settings\Bioanalyzer\2012-08-10\2012-08-10_002.xad

Created: 8/10/2012 11:01:59 AM
 Modified: 8/10/2012 11:54:57 AM

Electropherogram Summary Continued ...



Overall Results for sample 5 : K27-12 Lib

Number of peaks found: 2 Corr. Area 1: 158.4
 Noise: 0.1

Peak table for sample 5 : K27-12 Lib

Peak	Size [bp]	Conc. [pg/μl]	Molarity [pmol/l]	Observations
1	35	125.00	5,411.3	Lower Marker
2	45	25.99	878.5	
3	128	7.96	94.1	
4	10,380	75.00	10.9	Upper Marker

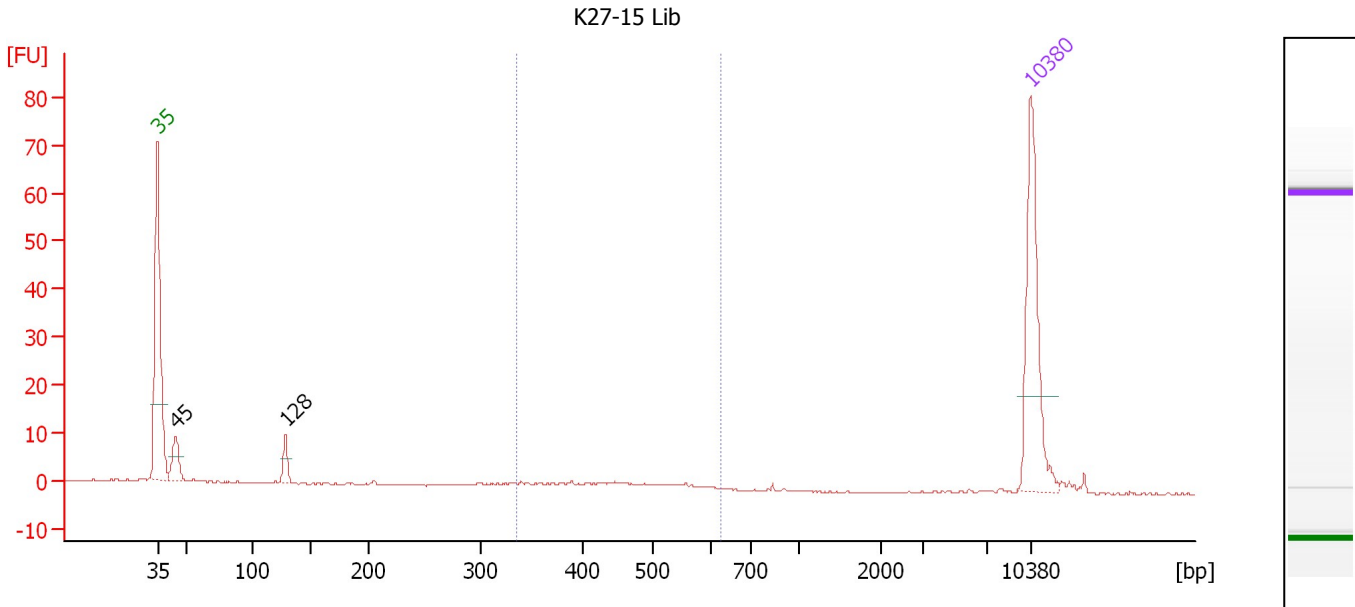
Region table for sample 5 : K27-12 Lib

From [bp]	To [bp]	Average Size [bp]	Molarity [pmol/l]	Conc. [pg/μl]	Corr. Area	% of Total	Size distribution in CV [%]	Color
289	586	408	620.8	161.49	158.4	81	16.6	Blue

Assay Class: High Sensitivity DNA Assay
 Data Path: C:\...ents and Settings\Bioanalyzer\2012-08-10\2012-08-10_002.xad

Created: 8/10/2012 11:01:59 AM
 Modified: 8/10/2012 11:54:57 AM

Electropherogram Summary Continued ...



Overall Results for sample 6 : K27-15 Lib

Number of peaks found: 2 Corr. Area 1: 12.6
 Noise: 0.1

Peak table for sample 6 : K27-15 Lib

Peak	Size [bp]	Conc. [pg/μl]	Molarity [pmol/l]	Observations
1	35	125.00	5,411.3	Lower Marker
2	45	27.19	922.2	
3	128	15.26	180.6	
4	10,380	75.00	10.9	Upper Marker

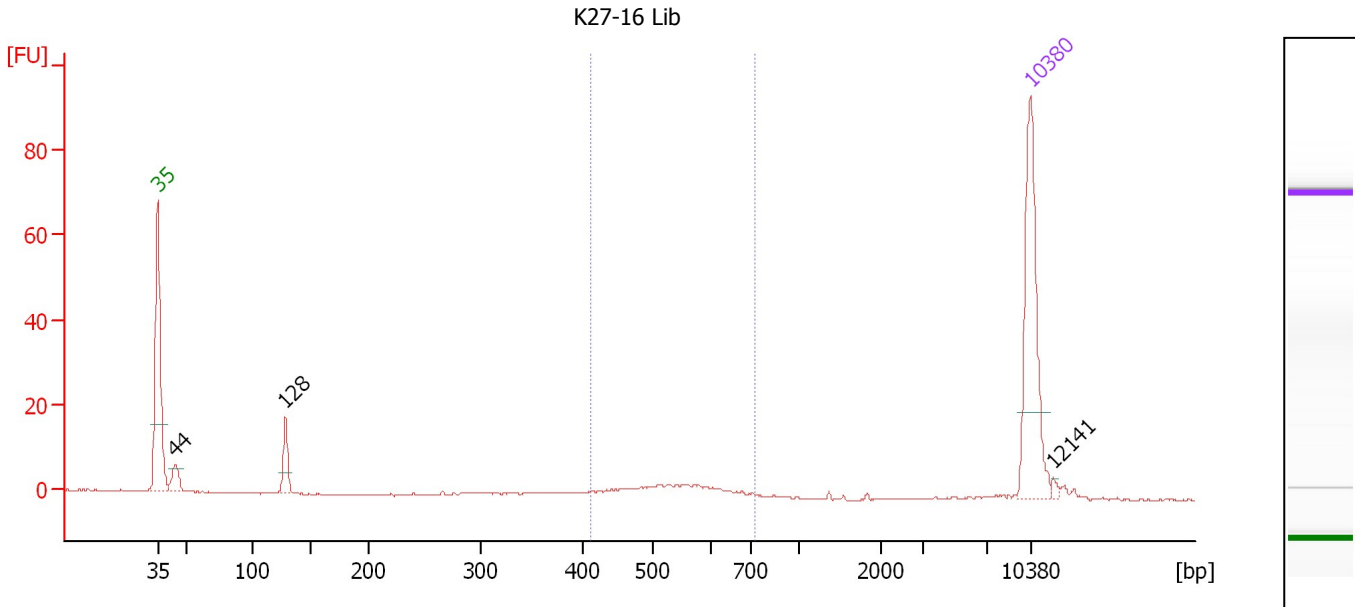
Region table for sample 6 : K27-15 Lib

From [bp]	To [bp]	Average Size [bp]	Molarity [pmol/l]	Conc. [pg/μl]	Corr. Area	% of Total	Size distribution in CV [%]	Color
336	624	446	60.5	17.24	12.6	24	15.6	Blue

Assay Class: High Sensitivity DNA Assay
 Data Path: C:\...ents and Settings\Bioanalyzer\2012-08-10\2012-08-10_002.xad

Created: 8/10/2012 11:01:59 AM
 Modified: 8/10/2012 11:54:57 AM

Electropherogram Summary Continued ...



Overall Results for sample 7 : K27-16 Lib

Number of peaks found: 3 Corr. Area 1: 23.7
 Noise: 0.1

Peak table for sample 7 : K27-16 Lib

Peak	Size [bp]	Conc. [pg/μl]	Molarity [pmol/l]	Observations
1	35	125.00	5,411.3	Lower Marker
2	44	15.82	539.6	
3	128	23.24	275.5	
4	10,380	75.00	10.9	Upper Marker
5	12,141	0.00	0.0	

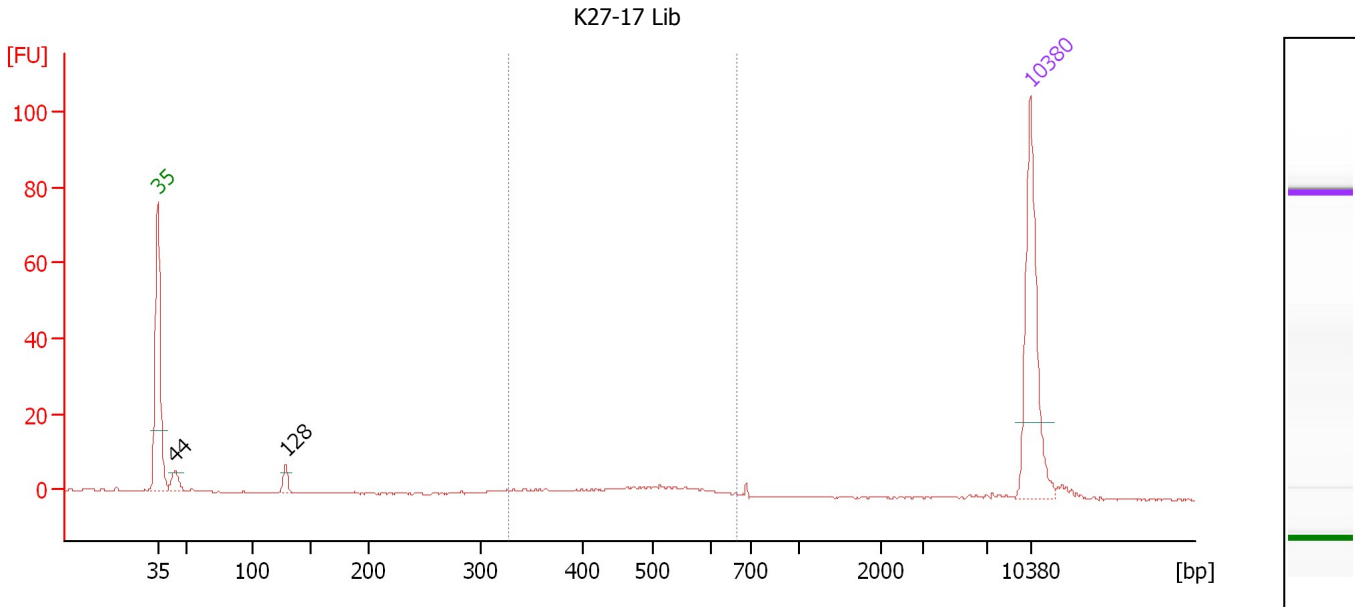
Region table for sample 7 : K27-16 Lib

From [bp]	To [bp]	Average Size [bp]	Molarity [pmol/l]	Conc. [pg/μl]	Corr. Area	% of Total	Size distribution in CV [%]	Color
413	720	538	75.8	26.39	23.7	42	12.4	Blue

Assay Class: High Sensitivity DNA Assay
 Data Path: C:\...ents and Settings\Bioanalyzer\2012-08-10\2012-08-10_002.xad

Created: 8/10/2012 11:01:59 AM
 Modified: 8/10/2012 11:54:57 AM

Electropherogram Summary Continued ...



Overall Results for sample 8 : K27-17 Lib

Number of peaks found: 2 Corr. Area 1: 32.3
 Noise: 0.1

Peak table for sample 8 : K27-17 Lib

Peak	Size [bp]	Conc. [pg/μl]	Molarity [pmol/l]	Observations
1	35	125.00	5,411.3	Lower Marker
2	44	13.89	473.2	
3	128	9.19	108.7	
4	10,380	75.00	10.9	Upper Marker

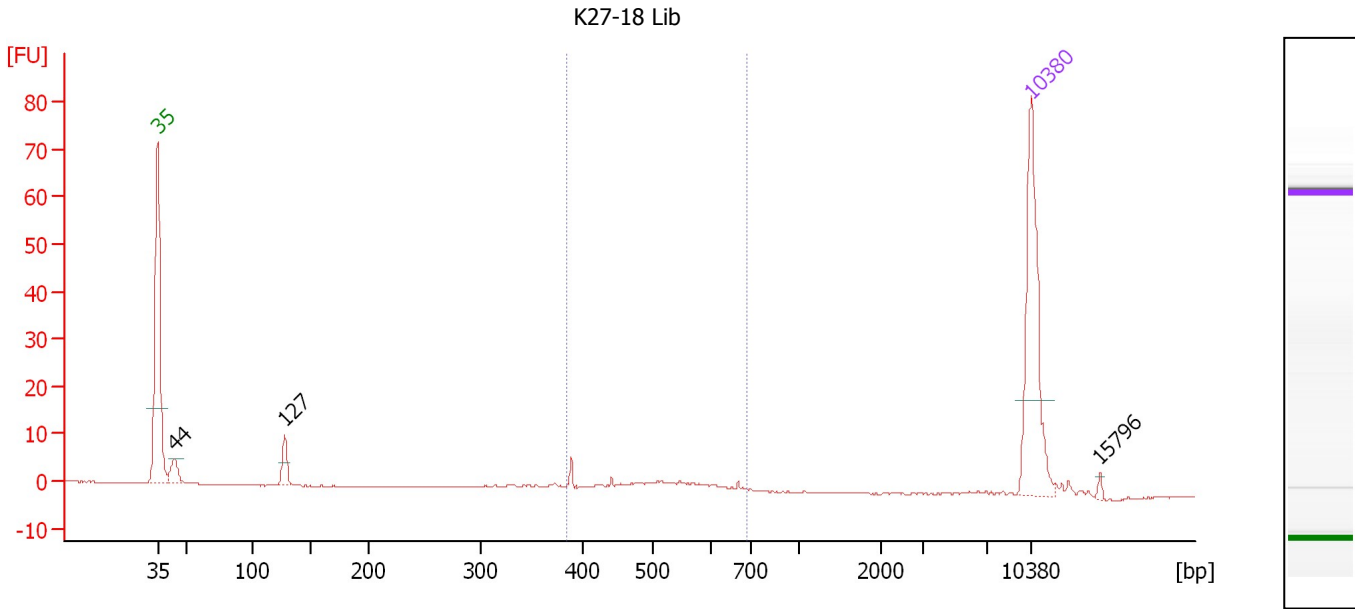
Region table for sample 8 : K27-17 Lib

From [bp]	To [bp]	Average Size [bp]	Molarity [pmol/l]	Conc. [pg/μl]	Corr. Area	% of Total	Size distribution in CV [%]	Color
327	666	474	117.7	35.15	32.3	53	17.7	Blue

Assay Class: High Sensitivity DNA Assay
 Data Path: C:\...ents and Settings\Bioanalyzer\2012-08-10\2012-08-10_002.xad

Created: 8/10/2012 11:01:59 AM
 Modified: 8/10/2012 11:54:57 AM

Electropherogram Summary Continued ...



Overall Results for sample 9 : K27-18 Lib

Number of peaks found: 3 Corr. Area 1: 18.4
 Noise: 0.1

Peak table for sample 9 : K27-18 Lib

Peak	Size [bp]	Conc. [pg/μl]	Molarity [pmol/l]	Observations
1	35	125.00	5,411.3	Lower Marker
2	44	15.44	532.6	
3	127	15.83	188.9	
4	10,380	75.00	10.9	Upper Marker
5	15,796	0.00	0.0	

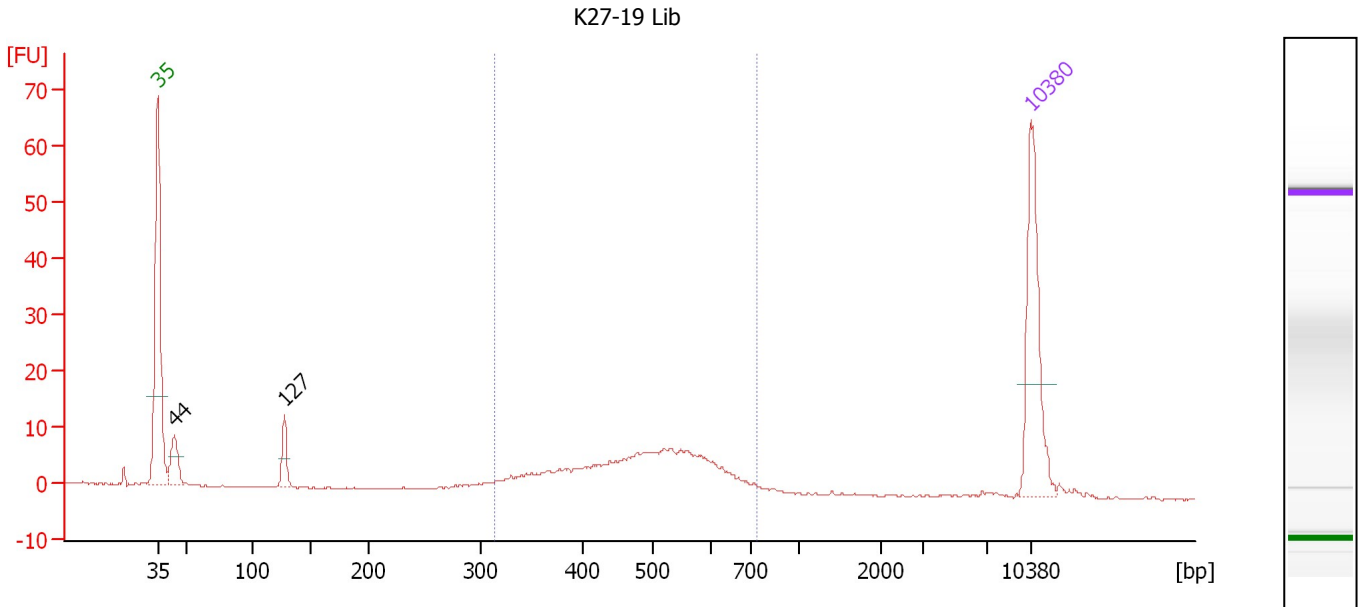
Region table for sample 9 : K27-18 Lib

From [bp]	To [bp]	Average Size [bp]	Molarity [pmol/l]	Conc. [pg/μl]	Corr. Area	% of Total	Size distribution in CV [%]	Color
385	688	509	73.5	23.90	18.4	40	15.2	Blue

Assay Class: High Sensitivity DNA Assay
 Data Path: C:\...ents and Settings\Bioanalyzer\2012-08-10\2012-08-10_002.xad

Created: 8/10/2012 11:01:59 AM
 Modified: 8/10/2012 11:54:57 AM

Electropherogram Summary Continued ...



Overall Results for sample 10 : K27-19 Lib

Number of peaks found: 2 Corr. Area 1: 115.0
 Noise: 0.1

Peak table for sample 10 : K27-19 Lib

Peak	Size [bp]	Conc. [pg/μl]	Molarity [pmol/l]	Observations
1	35	125.00	5,411.3	Lower Marker
2	44	32.34	1,113.7	
3	127	22.74	271.5	
4	10,380	75.00	10.9	Upper Marker

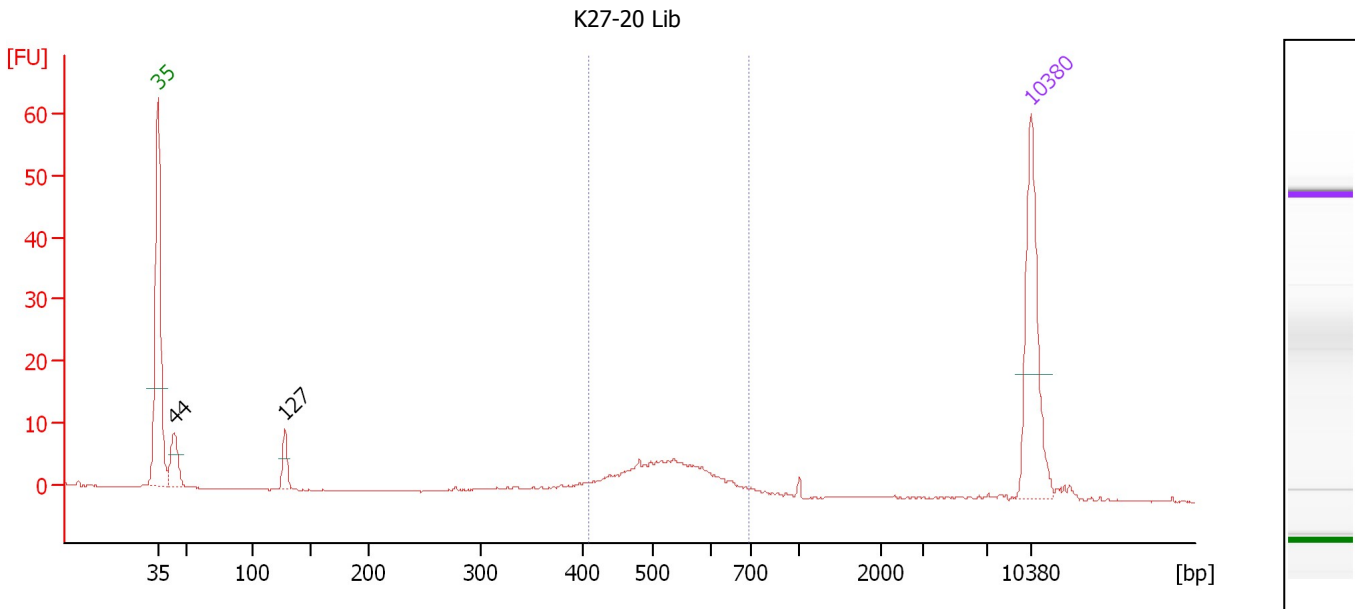
Region table for sample 10 : K27-19 Lib

From [bp]	To [bp]	Average Size [bp]	Molarity [pmol/l]	Conc. [pg/μl]	Corr. Area	% of Total	Size distribution in CV [%]	Color
314	743	490	600.4	184.21	115.0	76	19.0	Blue

Assay Class: High Sensitivity DNA Assay
 Data Path: C:\...ents and Settings\Bioanalyzer\2012-08-10\2012-08-10_002.xad

Created: 8/10/2012 11:01:59 AM
 Modified: 8/10/2012 11:54:57 AM

Electropherogram Summary Continued ...



Overall Results for sample 11 : K27-20 Lib

Number of peaks found: 2 Corr. Area 1: 53.2
 Noise: 0.1

Peak table for sample 11 : K27-20 Lib

Peak	Size [bp]	Conc. [pg/μl]	Molarity [pmol/l]	Observations
1	35	125.00	5,411.3	Lower Marker
2	44	35.00	1,203.6	
3	127	18.18	216.9	
4	10,380	75.00	10.9	Upper Marker

Region table for sample 11 : K27-20 Lib

From [bp]	To [bp]	Average Size [bp]	Molarity [pmol/l]	Conc. [pg/μl]	Corr. Area	% of Total	Size distribution in CV [%]	Color
409	695	527	265.1	90.63	53.2	59	12.2	Blue

Assay Class: High Sensitivity DNA Assay
Data Path: C:\...ents and Settings\Bioanalyzer\2012-08-10\2012-08-10_002.xad

Created: 8/10/2012 11:01:59 AM
Modified: 8/10/2012 11:54:57 AM

Gel Image

