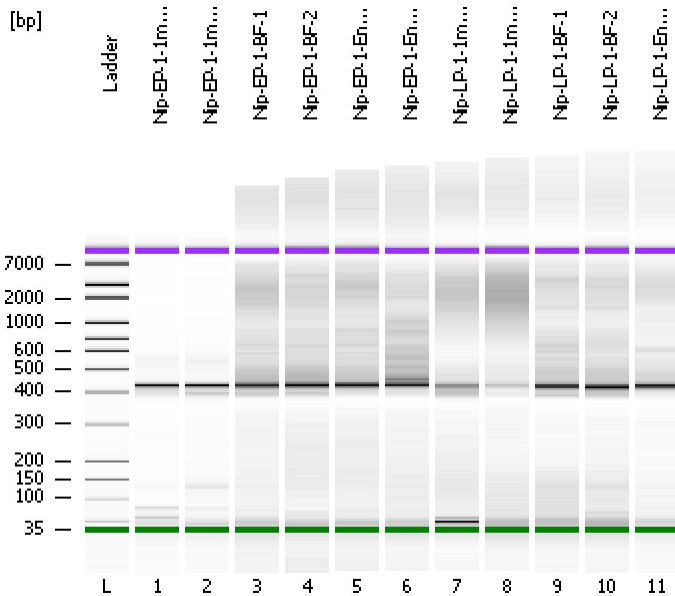


Assay Class: High Sensitivity DNA Assay
Data Path: C:\...ents and Settings\Bioanalyzer\2012-08-10\2012-08-10_003.xad

Created: 8/10/2012 1:02:28 PM
Modified: 8/10/2012 1:45:17 PM

Electrophoresis File Run Summary



Instrument Information:

Instrument Name: DE13701086 Firmware: C.01.069
Serial#: DE13701086 Type: G2938B

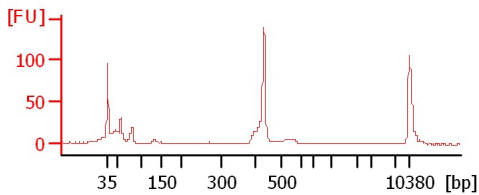
Assay Information:

Assay Origin Path: C:\Program Files\Agilent\2100 bioanalyzer\2100 expert\assays\dsDNA\High Sensitivity DNA.xsy
Assay Class: High Sensitivity DNA Assay
Version: 1.03
Assay Comments: Copyright © 2003-2010 Agilent Technologies

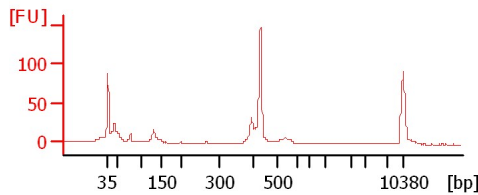
Chip Information:

Chip Lot #: Reagent Kit Lot #: Chip Comments:

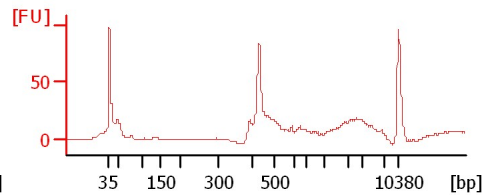
Nip-EP-1-1mm-1



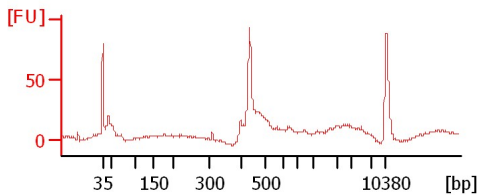
Nip-EP-1-1mm-2



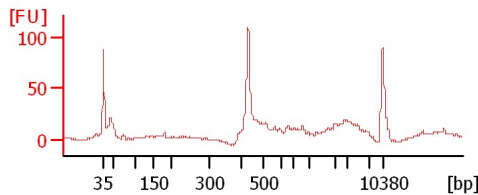
Nip-EP-1-BF-1



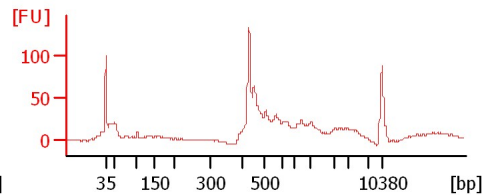
Nip-EP-1-BF-2



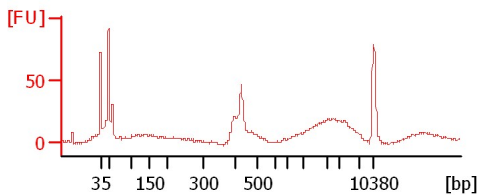
Nip-EP-1-Endo-1



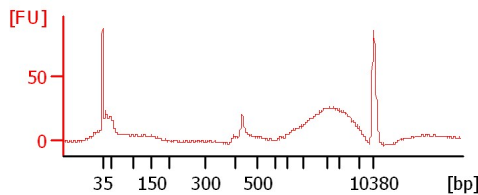
Nip-EP-1-Endo-2



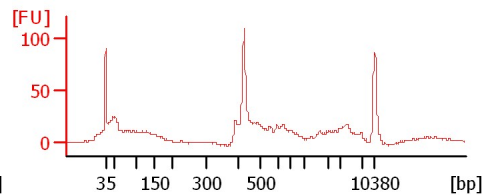
Nip-LP-1-1mm-1



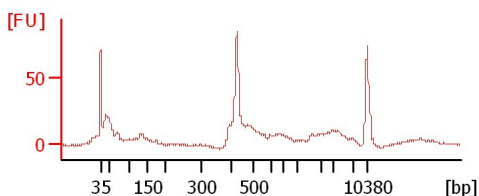
Nip-LP-1-1mm-2



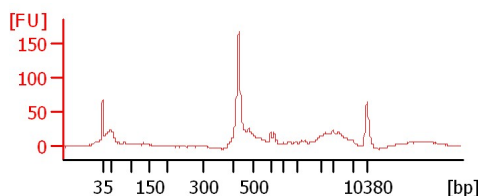
Nip-LP-1-BF-1



Nip-LP-1-BF-2



Nip-LP-1-Endo-1



Assay Class: High Sensitivity DNA Assay
 Data Path: C:\...ents and Settings\Bioanalyzer\2012-08-10\2012-08-10_003.xad

Created: 8/10/2012 1:02:28 PM
 Modified: 8/10/2012 1:45:17 PM

Electrophoresis File Run Summary (Chip Summary)

Sample Name	Sample Comment	Rest. Digest	Status	Observation	Result Label	Result Color
Nip-EP-1-1mm-1		<input type="checkbox"/>	✓			
Nip-EP-1-1mm-2		<input type="checkbox"/>	✓			
Nip-EP-1-BF-1		<input type="checkbox"/>	✓			
Nip-EP-1-BF-2		<input type="checkbox"/>	✓			
Nip-EP-1-Endo-1		<input type="checkbox"/>	✓			
Nip-EP-1-Endo-2		<input type="checkbox"/>	✓			
Nip-LP-1-1mm-1		<input type="checkbox"/>	✓			
Nip-LP-1-1mm-2		<input type="checkbox"/>	✓			
Nip-LP-1-BF-1		<input type="checkbox"/>	✓			
Nip-LP-1-BF-2		<input type="checkbox"/>	✓			
Nip-LP-1-Endo-1		<input type="checkbox"/>	✓			
Ladder		<input type="checkbox"/>	✓			

Chip Lot #

Reagent Kit Lot #

Chip Comments :

Assay Class: High Sensitivity DNA Assay
Data Path: C:\...ents and Settings\Bioanalyzer\2012-08-10\2012-08-10_003.xad

Created: 8/10/2012 1:02:28 PM
Modified: 8/10/2012 1:45:17 PM

Electrophoresis Assay Details

General Analysis Settings

Number of Available Sample and Ladder Wells (Max.) : 12
Minimum Visible Range [s] : 32
Maximum Visible Range [s] : 138
Start Analysis Time Range [s] : 33
End Analysis Time Range [s] : 137.5
Ladder Concentration [pg/μl] : 1950
Uses Standard Area for Ladder Fragments
Lower Marker Concentration [pg/μl] : 125
Upper Marker Concentration [pg/μl] : 75
Used Upper Marker for Quantitation
Standard Curve Fit is Point to Point
Show Data Aligned to Lower and Upper Marker

Integrator Settings

Integration Start Time [s] : 33.05
Integration End Time [s] : 137
Slope Threshold : 0.8
Height Threshold [FU] : 5
Area Threshold : 0.1
Width Threshold [s] : 0.6
Baseline Plateau [s] : 0.5

Filter Settings

Filter Width [s] : 0.5
Polynomial Order : 4

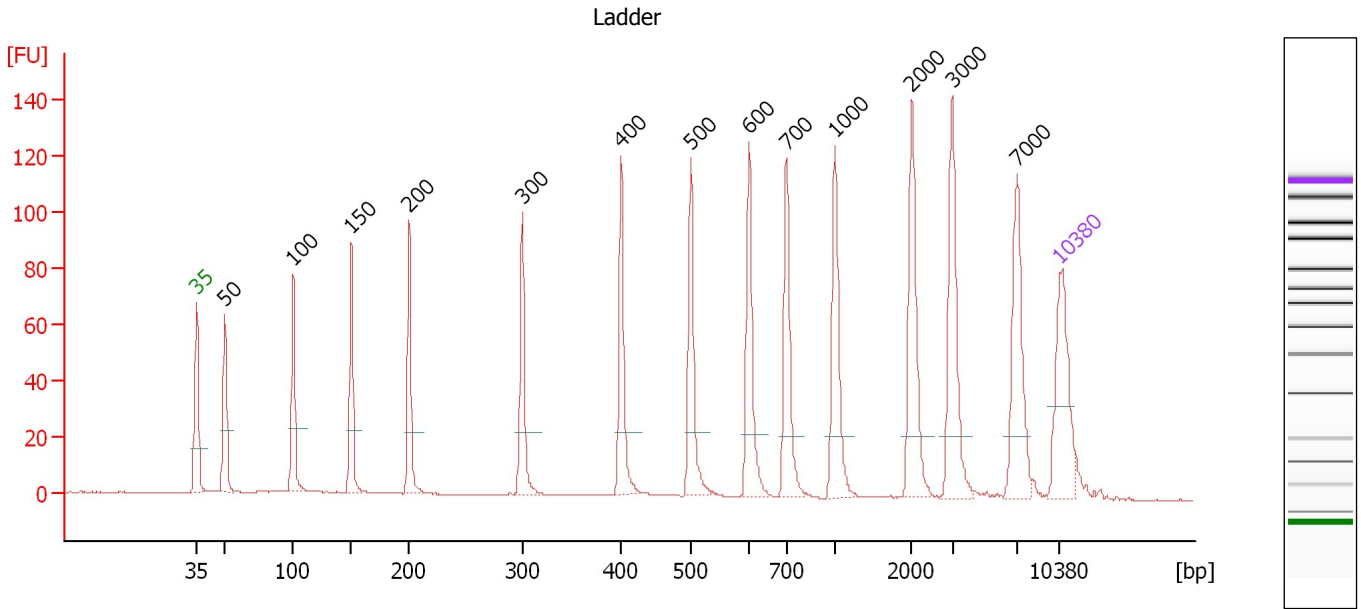
Ladder

Ladder Peak	Size	Area
1	35	160
2	50	210
3	100	208
4	150	221
5	200	242
6	300	270
7	400	305
8	500	306
9	600	336
10	700	321
11	1000	366
12	2000	413
13	3000	411
14	7000	400
15	10380	214

Assay Class: High Sensitivity DNA Assay
 Data Path: C:\...ents and Settings\Bioanalyzer\2012-08-10\2012-08-10_003.xad

Created: 8/10/2012 1:02:28 PM
 Modified: 8/10/2012 1:45:17 PM

Electropherogram Summary



Overall Results for Ladder

Noise: 0.1

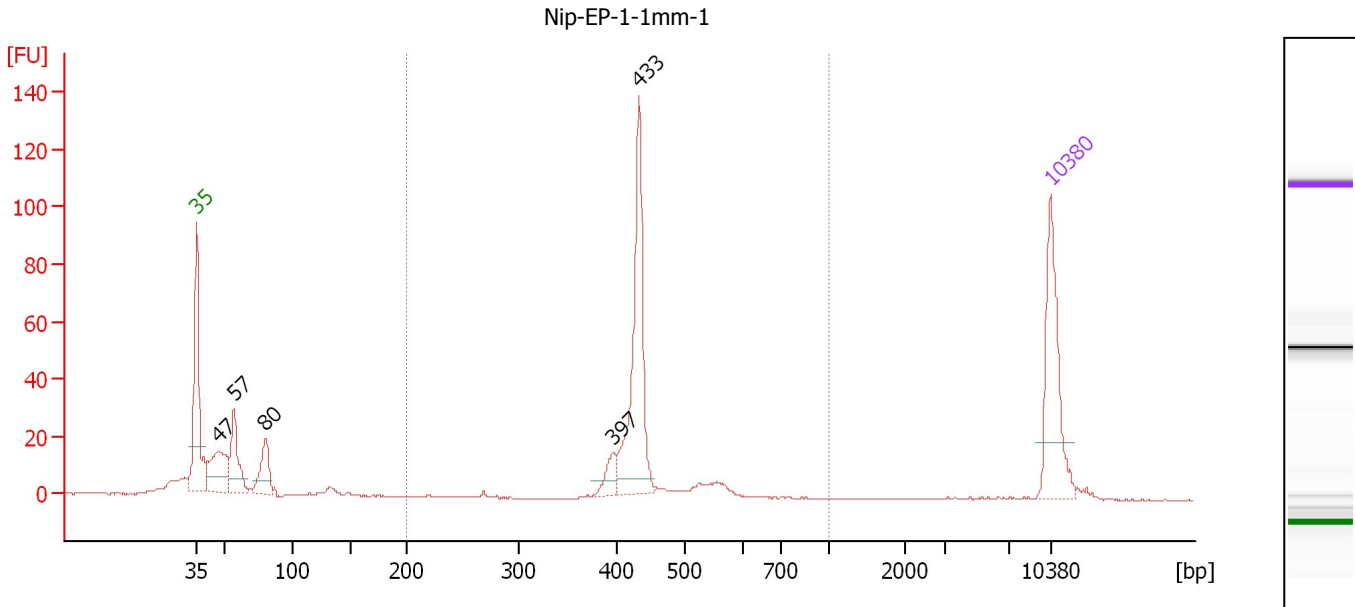
Peak table for Ladder

Peak	Size [bp]	Conc. [pg/μl]	Molarity [pmol/l]	Observations
1	35	125.00	5,411.3	Lower Marker
2	50	150.00	4,545.5	Ladder Peak
3	100	150.00	2,272.7	Ladder Peak
4	150	150.00	1,515.2	Ladder Peak
5	200	150.00	1,136.4	Ladder Peak
6	300	150.00	757.6	Ladder Peak
7	400	150.00	568.2	Ladder Peak
8	500	150.00	454.5	Ladder Peak
9	600	150.00	378.8	Ladder Peak
10	700	150.00	324.7	Ladder Peak
11	1,000	150.00	227.3	Ladder Peak
12	2,000	150.00	113.6	Ladder Peak
13	3,000	150.00	75.8	Ladder Peak
14	7,000	150.00	32.5	Ladder Peak
15	10,380	75.00	10.9	Upper Marker

Assay Class: High Sensitivity DNA Assay
 Data Path: C:\...ents and Settings\Bioanalyzer\2012-08-10\2012-08-10_003.xad

Created: 8/10/2012 1:02:28 PM
 Modified: 8/10/2012 1:45:17 PM

Electropherogram Summary Continued ...



Overall Results for sample 1 : Nip-EP-1-1mm-1

Number of peaks found: 5 Corr. Area 1: 228.7
 Noise: 0.1

Peak table for sample 1 : Nip-EP-1-1mm-1

Peak	Size [bp]	Conc. [pg/μl]	Molarity [pmol/l]	Observations
1	35	125.00	5,411.3	Lower Marker
2	47	75.61	2,451.8	
3	57	63.80	1,698.0	
4	80	49.19	929.0	
5	397	19.01	72.6	
6	433	161.10	564.1	
7	10,380	75.00	10.9	Upper Marker

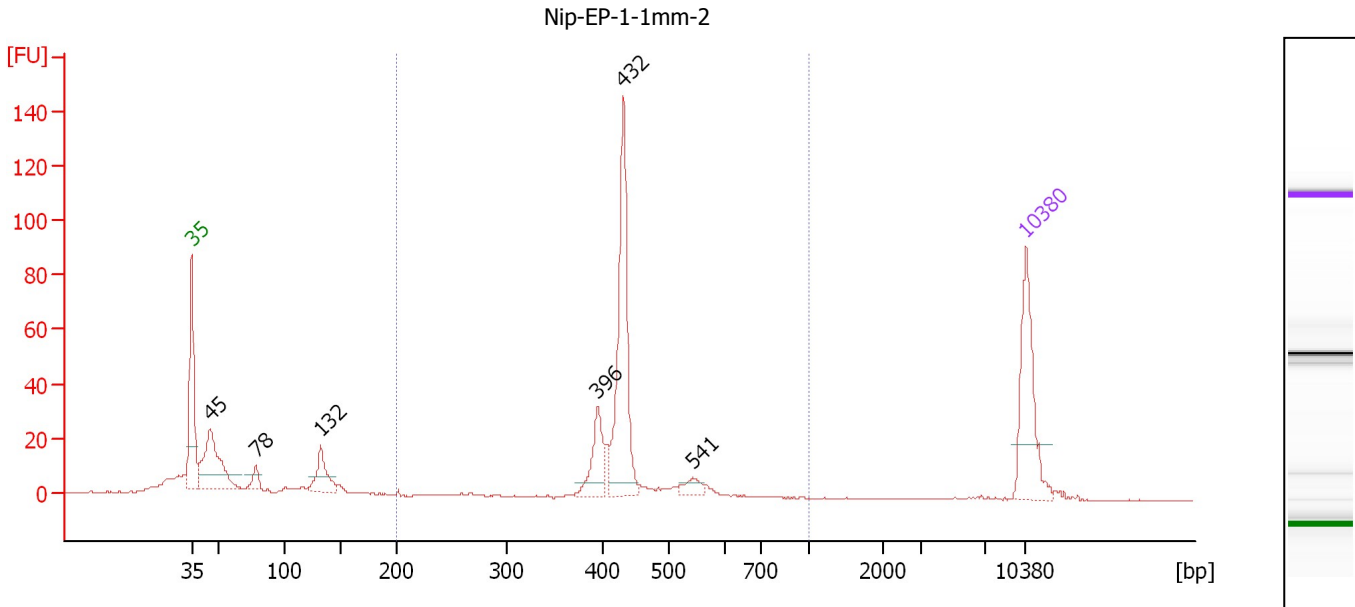
Region table for sample 1 : Nip-EP-1-1mm-1

From [bp]	To [bp]	Average Size [bp]	Molarity [pmol/l]	Conc. [pg/μl]	Corr. Area	% of Total	Size distribution in CV [%]	Color
200	1,000	439	756.0	216.66	228.7	54	10.3	Blue

Assay Class: High Sensitivity DNA Assay
 Data Path: C:\...ents and Settings\Bioanalyzer\2012-08-10\2012-08-10_003.xad

Created: 8/10/2012 1:02:28 PM
 Modified: 8/10/2012 1:45:17 PM

Electropherogram Summary Continued ...



Overall Results for sample 2 : Nip-EP-1-1mm-2

Number of peaks found: 6 Corr. Area 1: 266.9
 Noise: 0.2

Peak table for sample 2 : Nip-EP-1-1mm-2

Peak	Size [bp]	Conc. [pg/μl]	Molarity [pmol/l]	Observations
1	35	125.00	5,411.3	Lower Marker
2	45	130.31	4,391.2	
3	78	17.22	335.3	
4	132	45.70	525.0	
5	396	47.72	182.8	
6	432	176.06	616.9	
7	541	13.38	37.5	
8	10,380	75.00	10.9	Upper Marker

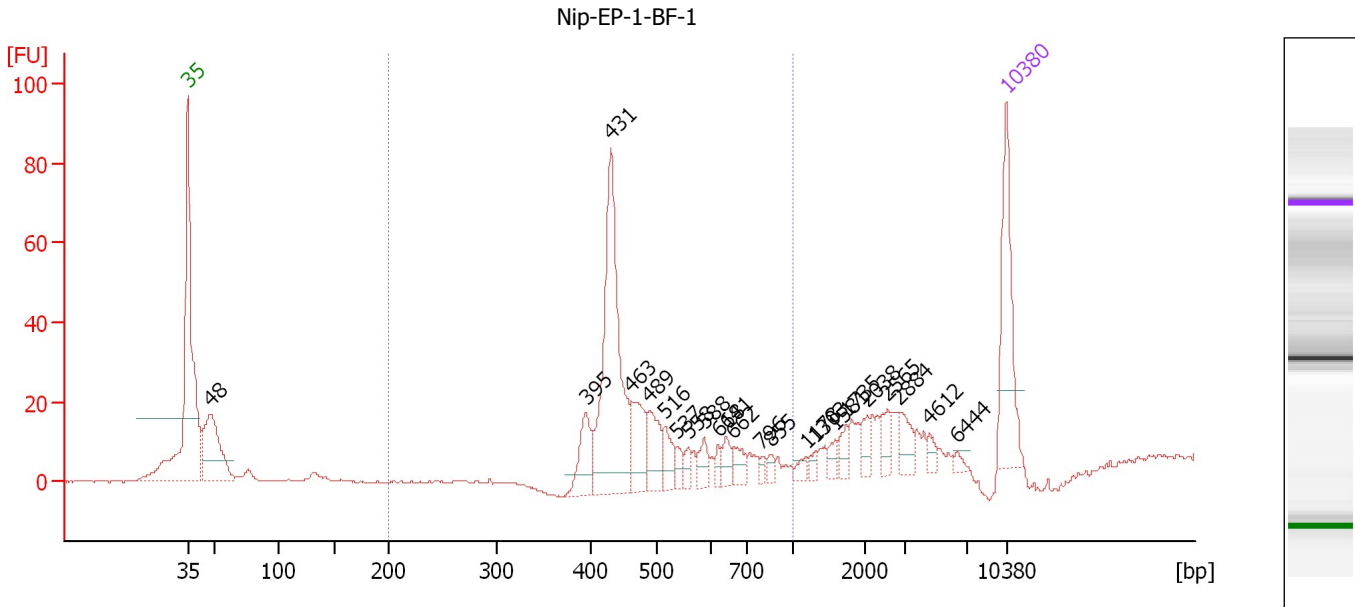
Region table for sample 2 : Nip-EP-1-1mm-2

From [bp]	To [bp]	Average Size [bp]	Molarity [pmol/l]	Conc. [pg/μl]	Corr. Area	% of Total	Size distribution in CV [%]	Color
200	1,000	437	992.4	280.12	266.9	54	12.8	Blue

Assay Class: High Sensitivity DNA Assay
 Data Path: C:\...ents and Settings\Bioanalyzer\2012-08-10\2012-08-10_003.xad

Created: 8/10/2012 1:02:28 PM
 Modified: 8/10/2012 1:45:17 PM

Electropherogram Summary Continued ...



Overall Results for sample 3 : Nip-EP-1-BF-1

Number of peaks found: 23 Corr. Area 1: 265.5
 Noise: 0.2

Peak table for sample 3 : Nip-EP-1-BF-1

Peak	Size [bp]	Conc. [pg/μl]	Molarity [pmol/l]	Observations
1	35	125.00	5,411.3	Lower Marker
2	48	121.83	3,835.5	
3	395	42.58	163.2	
4	431	225.30	791.6	
5	463	48.09	157.5	
6	489	39.68	122.9	
7	516	23.59	69.3	
8	537	9.99	28.2	
9	558	9.70	26.4	
10	588	15.59	40.2	
11	618	7.64	18.7	
12	641	14.00	33.1	
13	662	14.25	32.6	
14	796	5.26	10.0	
15	855	6.38	11.3	
16	1,178	6.94	8.9	
17	1,303	4.74	5.5	
18	1,581	7.92	7.6	
19	1,735	11.24	9.8	
20	2,038	11.88	8.8	
21	2,565	14.76	8.7	
22	2,884	17.21	9.0	
23	4,612	6.90	2.3	
24	6,444	4.19	1.0	
25	10,380	75.00	10.9	Upper Marker

Assay Class: High Sensitivity DNA Assay
Data Path: C:\...ents and Settings\Bioanalyzer\2012-08-10\2012-08-10_003.xad

Created: 8/10/2012 1:02:28 PM
Modified: 8/10/2012 1:45:17 PM

Electropherogram Summary Continued ...

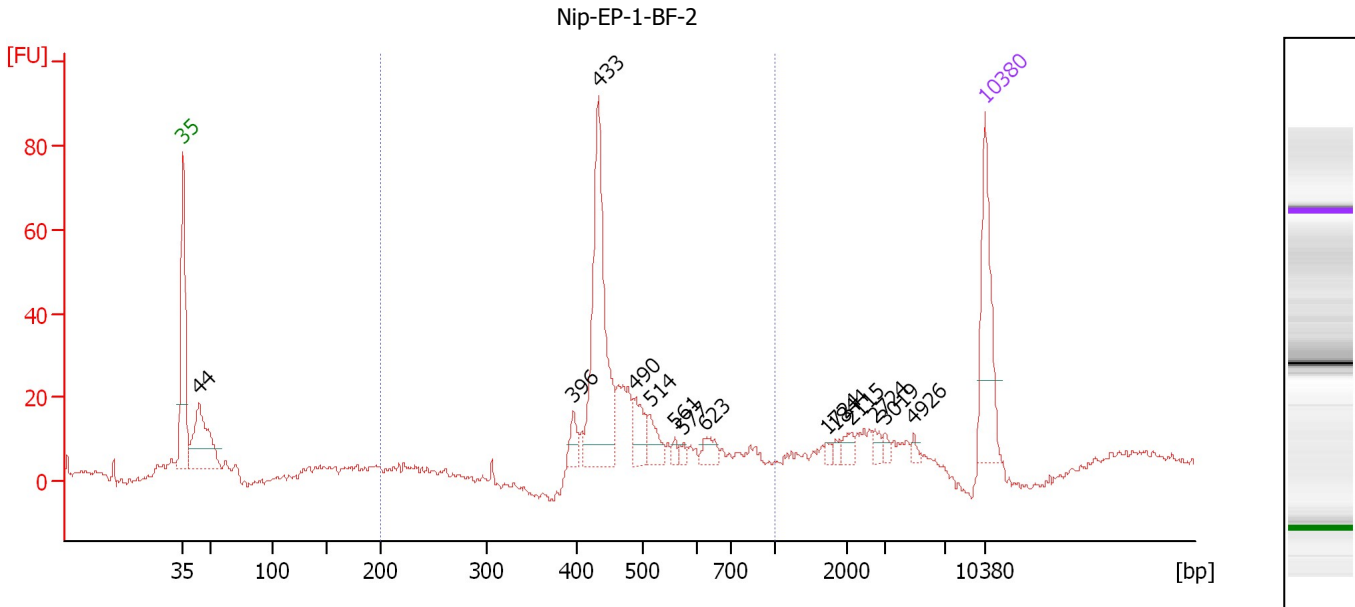
... Region table for sample 3 : Nip-EP-1-BF-1

From [bp]	To [bp]	Average Size [bp]	Molarity [pmol/l]	Conc. [pg/μl]	Corr. Area	% of Total	Size distribution in CV [%]	Color
200	1,000	478	1,121.2	342.83	265.5	61	18.1	■

Assay Class: High Sensitivity DNA Assay
 Data Path: C:\...ents and Settings\Bioanalyzer\2012-08-10\2012-08-10_003.xad

Created: 8/10/2012 1:02:28 PM
 Modified: 8/10/2012 1:45:17 PM

Electropherogram Summary Continued ...



Overall Results for sample 4 : Nip-EP-1-BF-2

Number of peaks found: 14 Corr. Area 1: 280.0
 Noise: 0.9

Peak table for sample 4 : Nip-EP-1-BF-2

Peak	Size [bp]	Conc. [pg/μl]	Molarity [pmol/l]	Observations
1	35	125.00	5,411.3	Lower Marker
2	44	127.32	4,369.7	
3	396	18.69	71.5	
4	433	209.74	734.1	
5	490	30.84	95.4	
6	514	22.91	67.5	
7	561	5.48	14.8	
8	577	5.79	15.2	
9	623	15.10	36.7	
10	1,724	4.41	3.9	
11	1,844	3.84	3.2	
12	2,115	9.54	6.8	
13	2,724	6.81	3.8	
14	3,019	4.85	2.4	
15	4,926	4.51	1.4	
16	10,380	75.00	10.9	Upper Marker

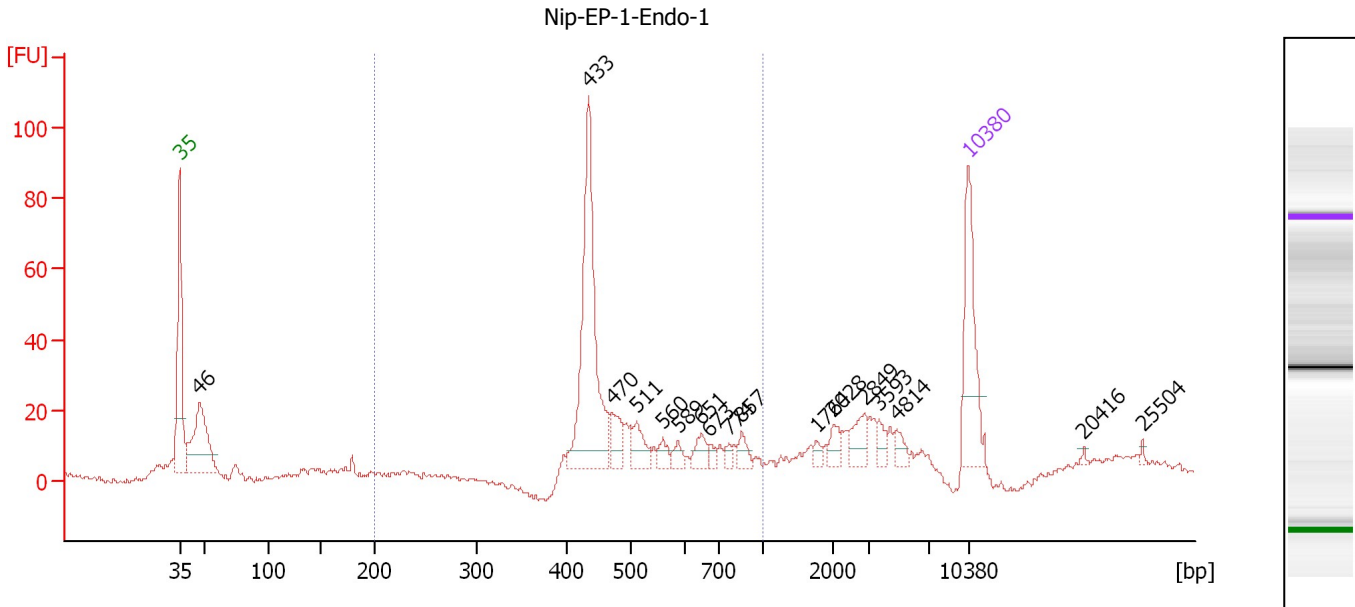
Region table for sample 4 : Nip-EP-1-BF-2

From [bp]	To [bp]	Average Size [bp]	Molarity [pmol/l]	Conc. [pg/μl]	Corr. Area	% of Total	Size distribution in CV [%]	Color
200	1,000	484	1,353.7	413.81	280.0	64	20.3	Blue

Assay Class: High Sensitivity DNA Assay
 Data Path: C:\...ents and Settings\Bioanalyzer\2012-08-10\2012-08-10_003.xad

Created: 8/10/2012 1:02:28 PM
 Modified: 8/10/2012 1:45:17 PM

Electropherogram Summary Continued ...



Overall Results for sample 5 : Nip-EP-1-Endo-1

Number of peaks found: 17 Corr. Area 1: 343.7
 Noise: 0.8

Peak table for sample 5 : Nip-EP-1-Endo-1

Peak	Size [bp]	Conc. [pg/μl]	Molarity [pmol/l]	Observations
1	35	125.00	5,411.3	Lower Marker
2	46	135.08	4,404.8	
3	433	227.10	794.2	
4	470	28.23	91.0	
5	511	28.14	83.4	
6	560	11.59	31.3	
7	589	9.96	25.7	
8	651	16.08	37.4	
9	673	5.80	13.1	
10	774	5.81	11.4	
11	857	12.19	21.5	
12	1,764	5.43	4.7	
13	2,028	12.49	9.3	
14	2,849	21.49	11.4	
15	3,593	9.36	3.9	
16	4,814	9.97	3.1	
17	10,380	75.00	10.9	Upper Marker
18	20,416	0.00	0.0	
19	25,504	0.00	0.0	

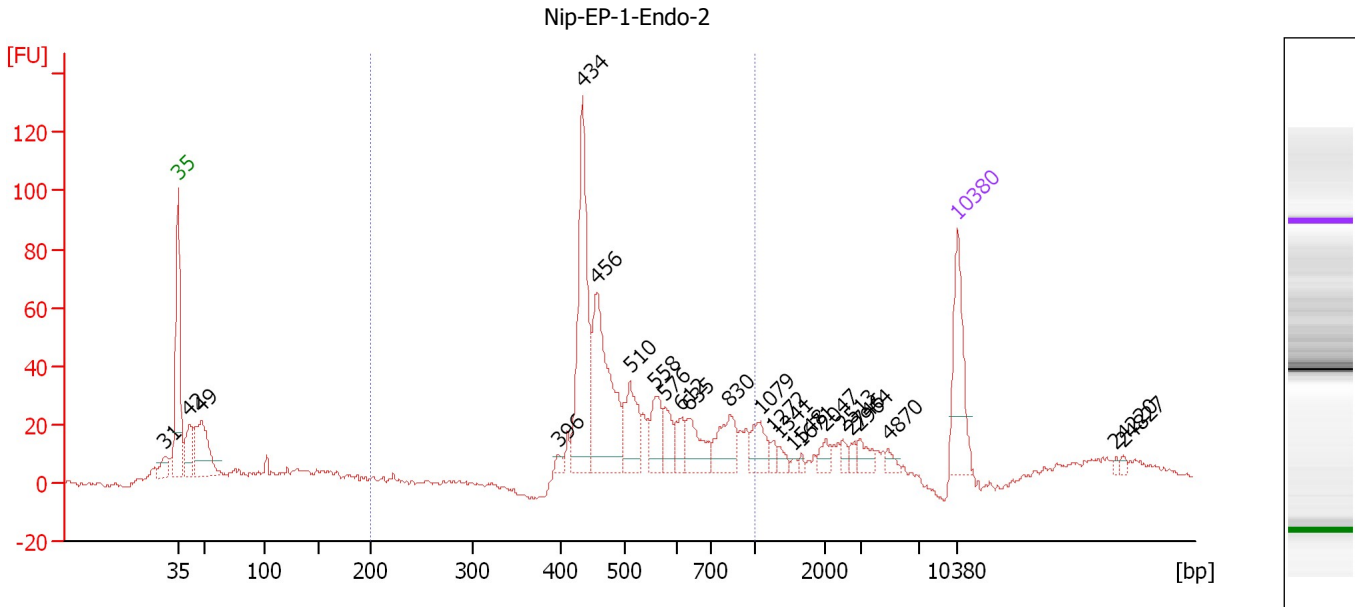
Region table for sample 5 : Nip-EP-1-Endo-1

From [bp]	To [bp]	Average Size [bp]	Molarity [pmol/l]	Conc. [pg/μl]	Corr. Area	% of Total	Size distribution in CV [%]	Color
200	1,000	515	1,391.0	437.27	343.7	54	26.1	Blue

Assay Class: High Sensitivity DNA Assay
 Data Path: C:\...ents and Settings\Bioanalyzer\2012-08-10\2012-08-10_003.xad

Created: 8/10/2012 1:02:28 PM
 Modified: 8/10/2012 1:45:17 PM

Electropherogram Summary Continued ...



Overall Results for sample 6 : Nip-EP-1-Endo-2

Number of peaks found: 24 Corr. Area 1: 606.3
 Noise: 0.9

Peak table for sample 6 : Nip-EP-1-Endo-2

Peak	Size [bp]	Conc. [pg/μl]	Molarity [pmol/l]	Observations
1	31	0.00	0.0	
2	35	125.00	5,411.3	Lower Marker
3	42	69.34	2,526.8	
4	49	119.35	3,707.0	
5	396	8.31	31.8	
6	434	221.44	773.9	
7	456	192.16	638.0	
8	510	72.54	215.3	
9	558	46.83	127.1	
10	576	29.54	77.6	
11	612	26.38	65.3	
12	635	45.55	108.8	
13	830	50.98	93.1	
14	1,079	31.69	44.5	
15	1,272	8.91	10.6	
16	1,341	8.56	9.7	
17	1,548	3.93	3.8	
18	1,671	3.49	3.2	
19	2,047	11.62	8.6	
20	2,513	7.78	4.7	
21	2,746	6.91	3.8	
22	2,964	15.37	7.9	
23	4,870	7.56	2.4	
24	10,380	75.00	10.9	Upper Marker
25	24,220	0.00	0.0	
26	24,827	0.00	0.0	

Assay Class: High Sensitivity DNA Assay
Data Path: C:\...ents and Settings\Bioanalyzer\2012-08-10\2012-08-10_003.xad

Created: 8/10/2012 1:02:28 PM
Modified: 8/10/2012 1:45:17 PM

Electropherogram Summary Continued ...

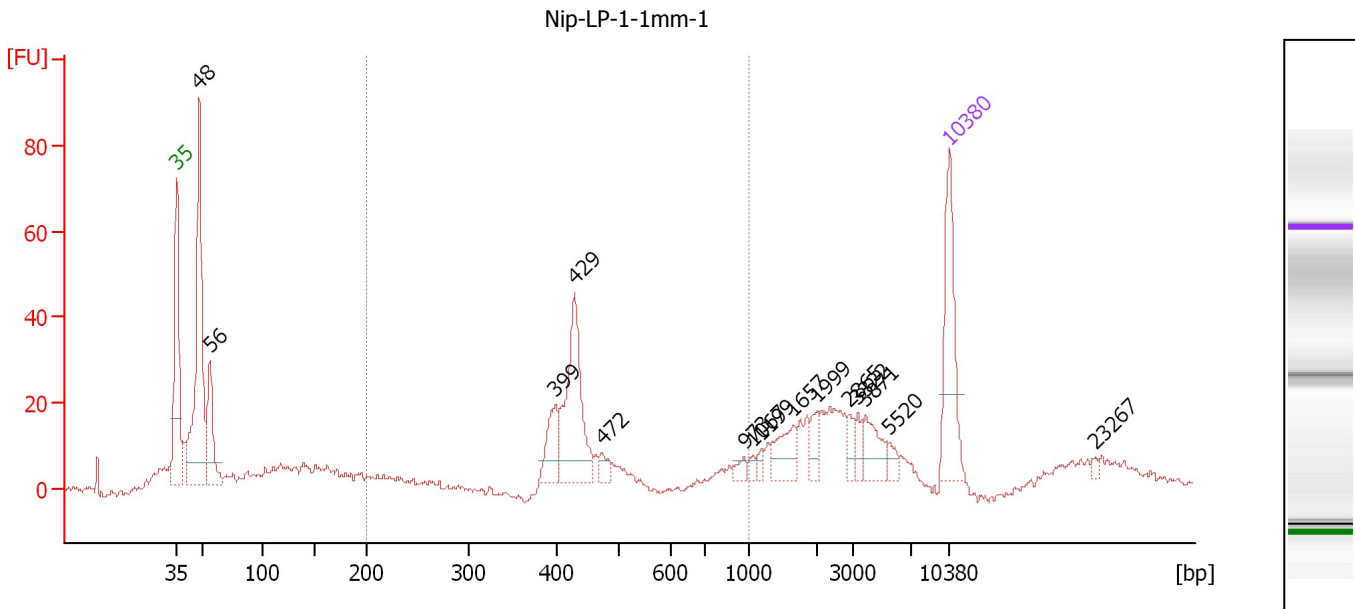
... Region table for sample 6 : Nip-EP-1-Endo-2

From [bp]	To [bp]	Average Size [bp]	Molarity [pmol/l]	Conc. [pg/μl]	Corr. Area	% of Total	Size distribution in CV [%]	Color
200	1,000	544	2,436.9	814.81	606.3	61	26.1	■

Assay Class: High Sensitivity DNA Assay
 Data Path: C:\...ents and Settings\Bioanalyzer\2012-08-10\2012-08-10_003.xad

Created: 8/10/2012 1:02:28 PM
 Modified: 8/10/2012 1:45:17 PM

Electropherogram Summary Continued ...



Overall Results for sample 7 : Nip-LP-1-1mm-1

Number of peaks found: 15 Corr. Area 1: 182.5
 Noise: 0.8

Peak table for sample 7 : Nip-LP-1-1mm-1

Peak	Size [bp]	Conc. [pg/µl]	Molarity [pmol/l]	Observations
1	35	125.00	5,411.3	Lower Marker
2	48	295.28	9,266.5	
3	56	86.90	2,336.2	
4	399	41.24	156.8	
5	429	129.37	457.3	
6	472	12.40	39.8	
7	973	7.95	12.4	
8	1,067	5.61	8.0	
9	1,199	5.76	7.3	
10	1,657	30.12	27.5	
11	1,999	15.05	11.4	
12	2,865	10.19	5.4	
13	3,322	9.86	4.5	
14	3,871	27.92	10.9	
15	5,520	8.69	2.4	
16	10,380	75.00	10.9	Upper Marker
17	23,267	0.00	0.0	

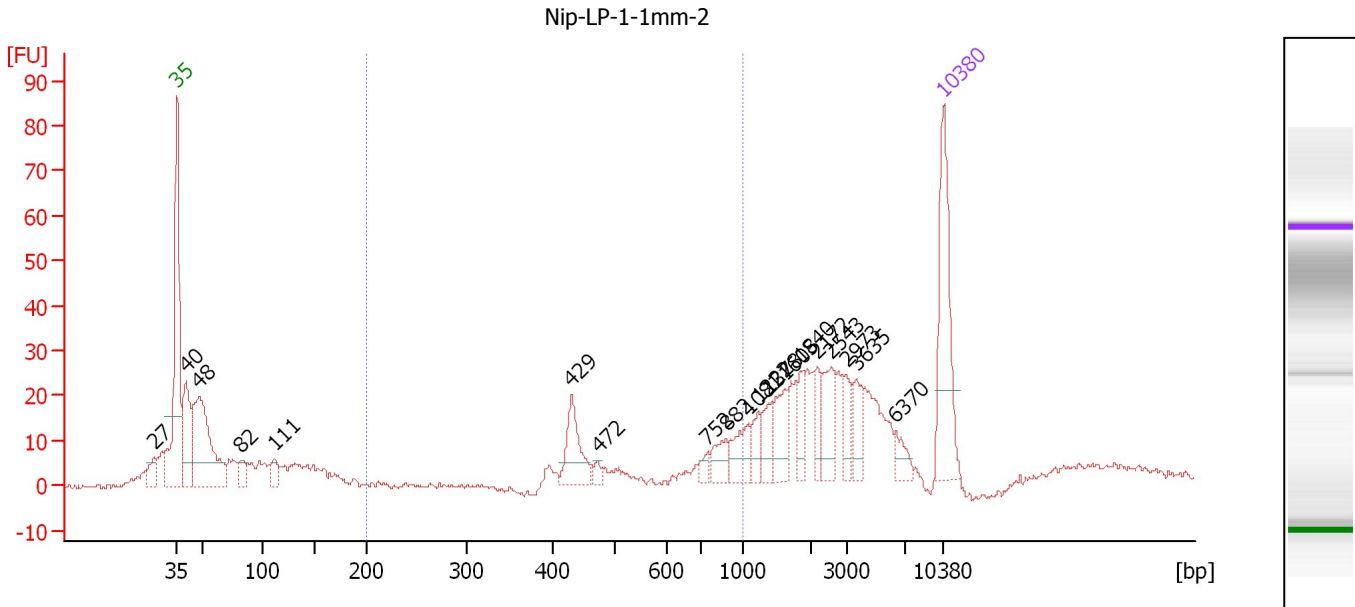
Region table for sample 7 : Nip-LP-1-1mm-1

From [bp]	To [bp]	Average Size [bp]	Molarity [pmol/l]	Conc. [pg/µl]	Corr. Area	% of Total	Size distribution in CV [%]	Color
200	1,000	466	1,026.3	274.46	182.5	26	34.4	Blue

Assay Class: High Sensitivity DNA Assay
 Data Path: C:\...ents and Settings\Bioanalyzer\2012-08-10\2012-08-10_003.xad

Created: 8/10/2012 1:02:28 PM
 Modified: 8/10/2012 1:45:17 PM

Electropherogram Summary Continued ...



Overall Results for sample 8 : Nip-LP-1-1mm-2

Number of peaks found: 19 Corr. Area 1: 83.1
 Noise: 0.6

Peak table for sample 8 : Nip-LP-1-1mm-2

Peak	Size [bp]	Conc. [pg/μl]	Molarity [pmol/l]	Observations
1	27	0.00	0.0	
2	35	125.00	5,411.3	Lower Marker
3	40	81.96	3,072.0	
4	48	159.32	4,987.4	
5	82	17.78	329.6	
6	111	14.00	190.9	
7	429	43.60	153.9	
8	472	5.74	18.4	
9	752	7.14	14.4	
10	882	16.76	28.8	
11	1,081	24.46	34.3	
12	1,222	14.62	18.1	
13	1,378	17.25	19.0	
14	1,605	27.77	26.2	
15	1,840	16.00	13.2	
16	2,172	14.85	10.4	
17	2,543	30.30	18.1	
18	2,973	16.44	8.4	
19	3,635	18.44	7.7	
20	6,370	11.47	2.7	
21	10,380	75.00	10.9	Upper Marker

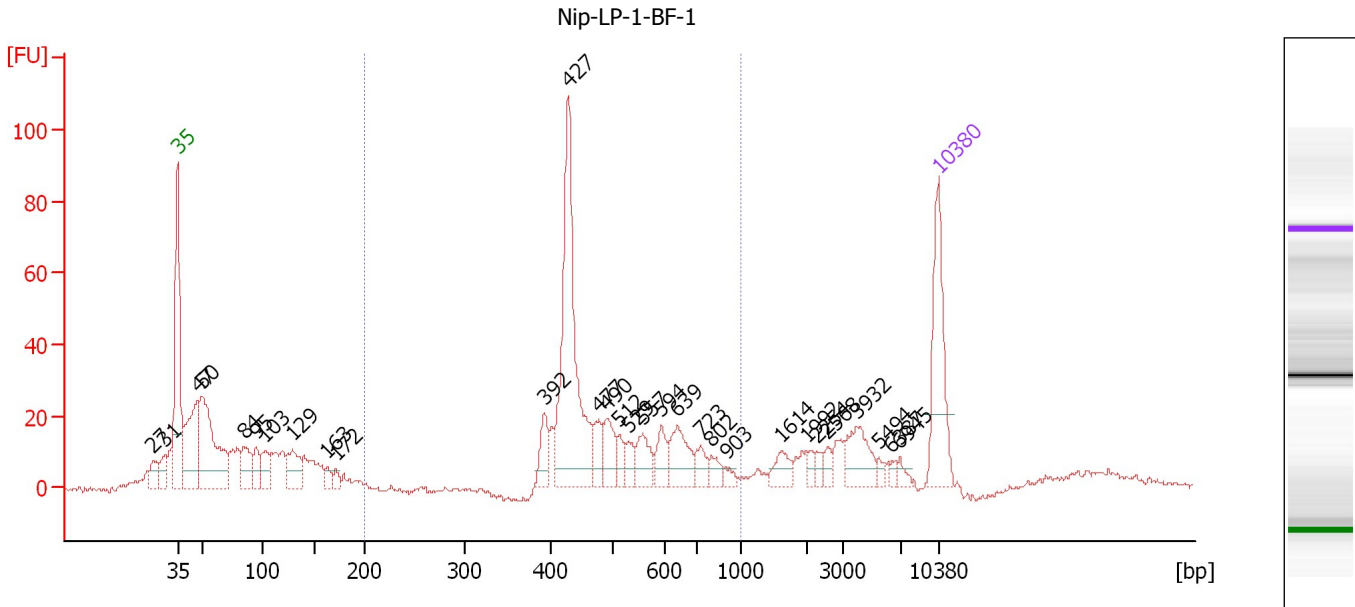
Region table for sample 8 : Nip-LP-1-1mm-2

From [bp]	To [bp]	Average Size [bp]	Molarity [pmol/l]	Conc. [pg/μl]	Corr. Area	% of Total	Size distribution in CV [%]	Color
200	1,000	638	278.0	100.94	83.1	14	33.4	Blue

Assay Class: High Sensitivity DNA Assay
 Data Path: C:\...ents and Settings\Bioanalyzer\2012-08-10\2012-08-10_003.xad

Created: 8/10/2012 1:02:28 PM
 Modified: 8/10/2012 1:45:17 PM

Electropherogram Summary Continued ...



Overall Results for sample 9 : Nip-LP-1-BF-1

Number of peaks found: 30 Corr. Area 1: 409.0
 Noise: 0.8

Peak table for sample 9 : Nip-LP-1-BF-1

Peak	Size [bp]	Conc. [pg/μl]	Molarity [pmol/l]	Observations
1	27	0.00	0.0	
2	31	0.00	0.0	
3	35	125.00	5,411.3	Lower Marker
4	47	120.40	3,864.8	
5	50	184.33	5,611.6	
6	84	44.38	798.2	
7	95	25.19	402.2	
8	103	34.66	510.6	
9	129	46.01	541.0	
10	163	10.95	102.0	
11	172	9.14	80.7	
12	392	29.14	112.7	
13	427	238.55	846.1	
14	477	26.09	82.9	
15	490	33.78	104.4	
16	512	14.02	41.5	
17	529	15.61	44.7	
18	557	28.95	78.7	
19	594	23.01	58.7	
20	639	42.50	100.8	
21	723	16.44	34.5	
22	802	12.32	23.3	
23	903	6.49	10.9	
24	1,614	16.51	15.5	
25	1,992	6.72	5.1	
26	2,254	6.05	4.1	

Assay Class: High Sensitivity DNA Assay
 Data Path: C:\...ents and Settings\Bioanalyzer\2012-08-10\2012-08-10_003.xad

Created: 8/10/2012 1:02:28 PM
 Modified: 8/10/2012 1:45:17 PM

Electropherogram Summary Continued ...

... Peak table for sample 9 : Nip-LP-1-BF-1

Peak	Size [bp]	Conc. [pg/μl]	Molarity [pmol/l]	Observations
27	2,568	7.36	4.3	
28	3,932	34.65	13.4	
29	5,494	4.90	1.4	
30	6,387	4.17	1.0	
31	6,945	5.56	1.2	
32	10,380	75.00	10.9	Upper Marker

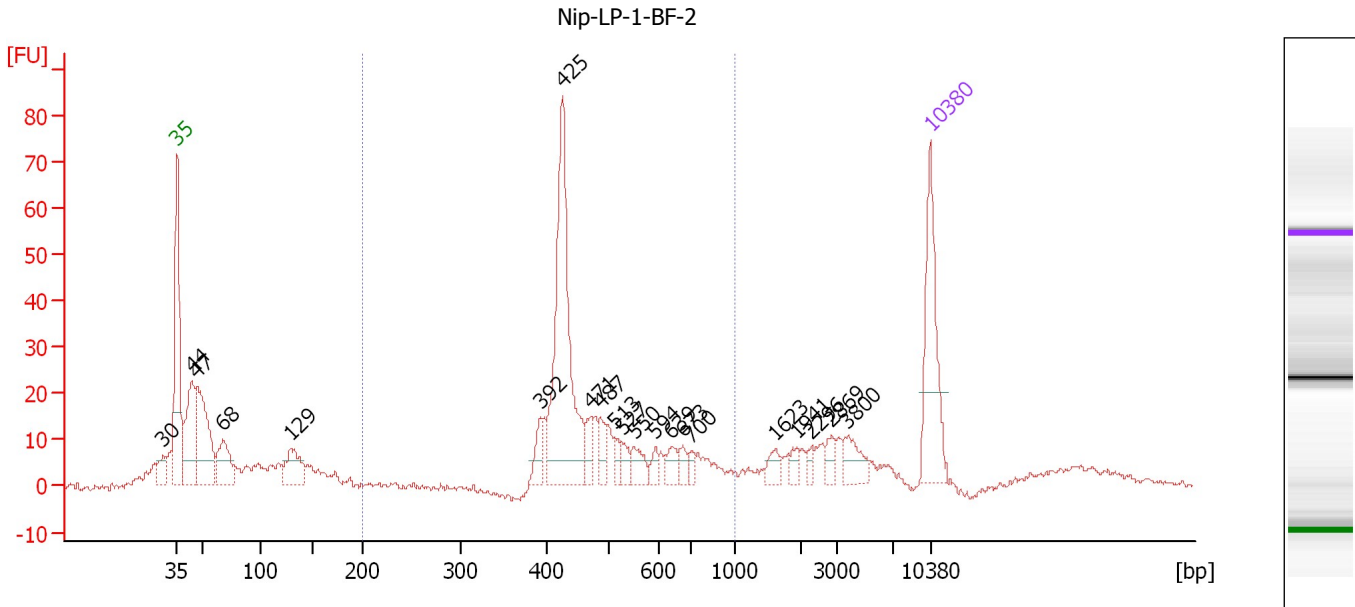
Region table for sample 9 : Nip-LP-1-BF-1

From [bp]	To [bp]	Average Size [bp]	Molarity [pmol/l]	Conc. [pg/μl]	Corr. Area	% of Total	Size distribution in CV [%]	Color
200	1,000	510	1,576.2	500.39	409.0	43	23.6	

Assay Class: High Sensitivity DNA Assay
 Data Path: C:\...ents and Settings\Bioanalyzer\2012-08-10\2012-08-10_003.xad

Created: 8/10/2012 1:02:28 PM
 Modified: 8/10/2012 1:45:17 PM

Electropherogram Summary Continued ...



Overall Results for sample 10 : Nip-LP-1-BF-2

Number of peaks found: 21 Corr. Area 1: 308.2
 Noise: 0.6

Peak table for sample 10 : Nip-LP-1-BF-2


Peak	Size [bp]	Conc. [pg/μl]	Molarity [pmol/l]	Observations
1	30	0.00	0.0	
2	35	125.00	5,411.3	Lower Marker
3	44	108.80	3,712.6	
4	47	134.40	4,303.2	
5	68	55.05	1,230.4	
6	129	47.27	555.5	
7	392	19.19	74.1	
8	425	228.38	814.7	
9	471	20.02	64.4	
10	487	16.75	52.1	
11	513	10.60	31.3	
12	527	11.38	32.7	
13	550	17.48	48.1	
14	594	8.94	22.8	
15	639	14.17	33.6	
16	673	10.10	22.7	
17	700	6.70	14.5	
18	1,623	10.71	10.0	
19	1,941	7.45	5.8	
20	2,296	5.50	3.6	
21	2,869	9.99	5.3	
22	3,800	20.19	8.1	
23	10,380	75.00	10.9	Upper Marker

Assay Class: High Sensitivity DNA Assay
Data Path: C:\...ents and Settings\Bioanalyzer\2012-08-10\2012-08-10_003.xad

Created: 8/10/2012 1:02:28 PM
Modified: 8/10/2012 1:45:17 PM

Electropherogram Summary Continued ...

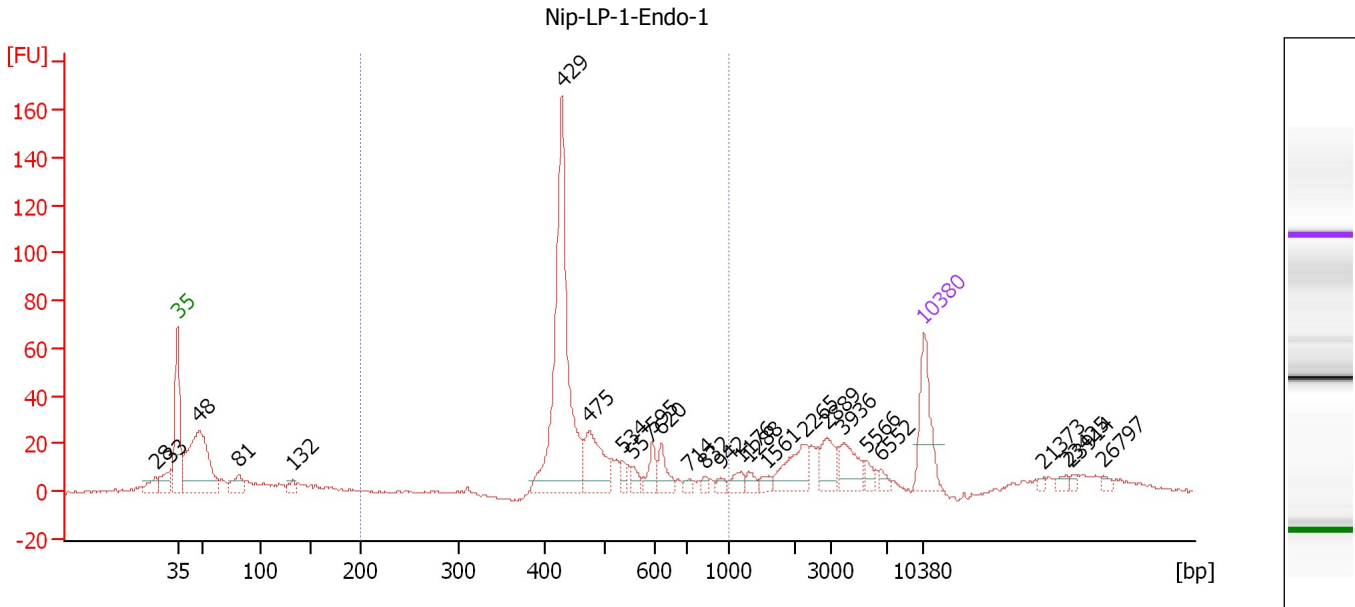
... Region table for sample 10 : Nip-LP-1-BF-2

From [bp]	To [bp]	Average Size [bp]	Molarity [pmol/l]	Conc. [pg/ μ l]	Corr. Area	% of Total	Size distribution in CV [%]	Color
200	1,000	497	1,417.4	438.97	308.2	45	24.2	

Assay Class: High Sensitivity DNA Assay
 Data Path: C:\...ents and Settings\Bioanalyzer\2012-08-10\2012-08-10_003.xad

Created: 8/10/2012 1:02:28 PM
 Modified: 8/10/2012 1:45:17 PM

Electropherogram Summary Continued ...



Overall Results for sample 11 : Nip-LP-1-Endo-1

Number of peaks found: 26 Corr. Area 1: 462.1
 Noise: 0.5

Peak table for sample 11 : Nip-LP-1-Endo-1

Peak	Size [bp]	Conc. [pg/μl]	Molarity [pmol/l]	Observations
1	28	0.00	0.0	
2	33	0.00	0.0	
3	35	125.00	5,411.3	Lower Marker
4	48	297.62	9,440.9	
5	81	36.67	683.8	
6	132	15.63	180.0	
7	429	446.90	1,578.9	
8	475	95.42	304.5	
9	534	15.37	43.6	
10	557	13.65	37.2	
11	595	28.71	73.1	
12	620	30.89	75.5	
13	714	7.64	16.2	
14	832	6.97	12.7	
15	942	7.98	12.8	
16	1,176	15.33	19.8	
17	1,288	11.18	13.1	
18	1,561	9.71	9.4	
19	2,265	54.68	36.6	
20	2,889	36.52	19.2	
21	3,936	42.15	16.2	
22	5,566	12.34	3.4	
23	6,552	9.08	2.1	
24	10,380	75.00	10.9	Upper Marker
25	21,373	0.00	0.0	
26	23,425	0.00	0.0	


Assay Class: High Sensitivity DNA Assay
Data Path: C:\...ents and Settings\Bioanalyzer\2012-08-10\2012-08-10_003.xad

Created: 8/10/2012 1:02:28 PM
Modified: 8/10/2012 1:45:17 PM

Electropherogram Summary Continued ...**... Peak table for sample 11 : Nip-LP-1-Endo-1**

Peak	Size [bp]	Conc. [pg/ μ l]	Molarity [pmol/l]	Observations
27	23,914	0.00	0.0	
28	26,797	0.00	0.0	

Region table for sample 11 : Nip-LP-1-Endo-1

From [bp]	To [bp]	Average Size [bp]	Molarity [pmol/l]	Conc. [pg/ μ l]	Corr. Area	% of Total	Size distribution in CV [%]	Color
200	1,000	488	2,304.6	706.81	462.1	47	22.7	

Assay Class: High Sensitivity DNA Assay
Data Path: C:\...ents and Settings\Bioanalyzer\2012-08-10\2012-08-10_003.xad

Created: 8/10/2012 1:02:28 PM
Modified: 8/10/2012 1:45:17 PM

Gel Image

