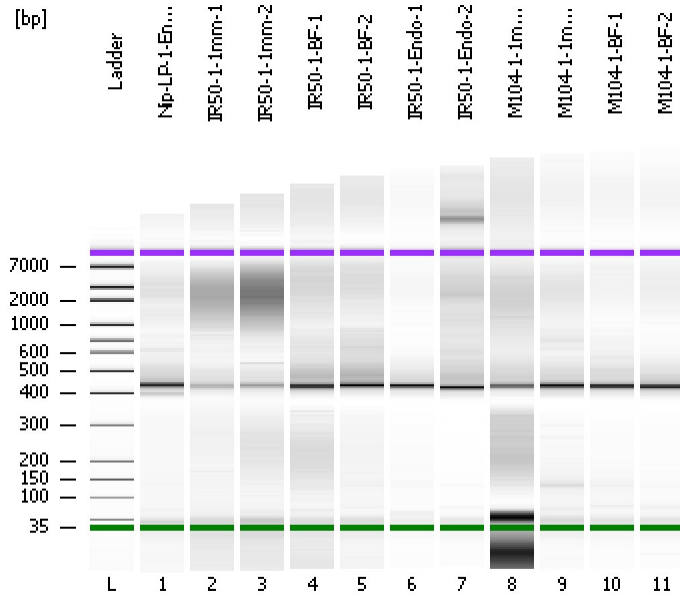


Assay Class: High Sensitivity DNA Assay
Data Path: C:\...ents and Settings\Bioanalyzer\2012-08-10\2012-08-10_004.xad

Created: 8/10/2012 1:48:17 PM
Modified: 8/10/2012 2:31:58 PM

Electrophoresis File Run Summary



Instrument Information:

Instrument Name: DE13701086 Firmware: C.01.069
Serial#: DE13701086 Type: G2938B

Assay Information:

Assay Origin Path: C:\Program Files\Agilent\2100 bioanalyzer\2100 expert\assays\dsDNA\High Sensitivity DNA.xsy
Assay Class: High Sensitivity DNA Assay
Version: 1.03
Assay Comments: Copyright © 2003-2010 Agilent Technologies

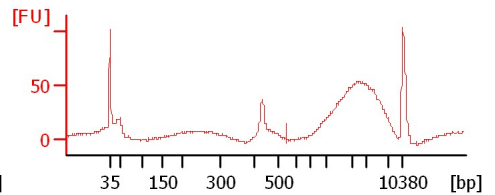
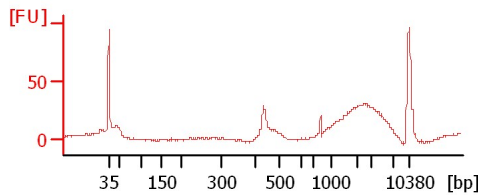
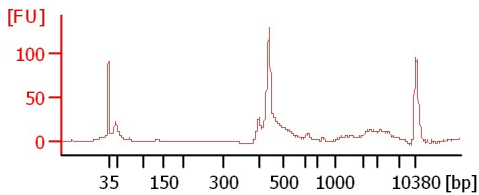
Chip Information:

Chip Lot #:
Reagent Kit Lot #:
Chip Comments:

Nip-LP-1-Endo-2

IR50-1-1mm-1

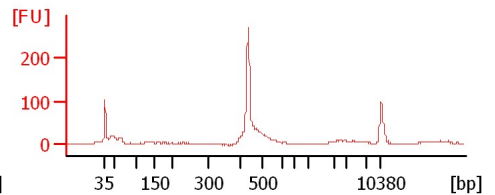
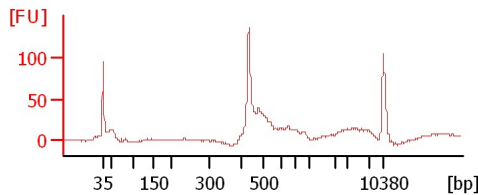
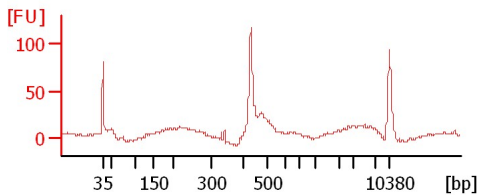
IR50-1-1mm-2



IR50-1-BF-1

IR50-1-BF-2

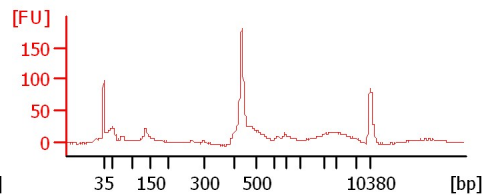
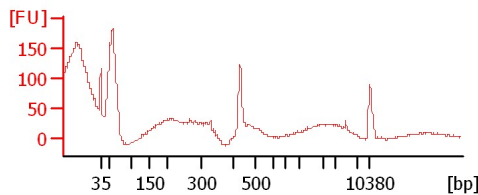
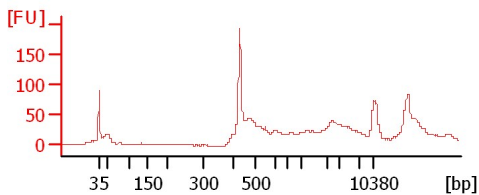
IR50-1-Endo-1



IR50-1-Endo-2

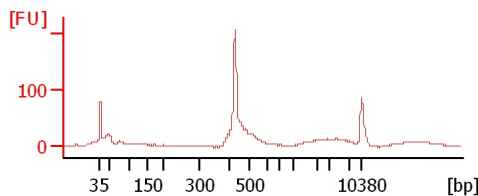
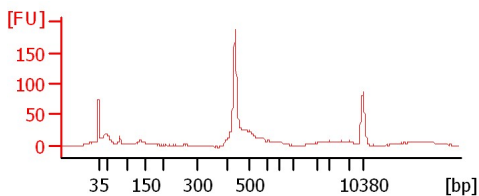
M104-1-1mm-1

M104-1-1mm-2



M104-1-BF-1

M104-1-BF-2



Assay Class: High Sensitivity DNA Assay
 Data Path: C:\...ents and Settings\Bioanalyzer\2012-08-10\2012-08-10_004.xad

Created: 8/10/2012 1:48:17 PM
 Modified: 8/10/2012 2:31:58 PM

Electrophoresis File Run Summary (Chip Summary)

Sample Name	Sample Comment	Rest. Digest	Status	Observation	Result Label	Result Color
Nip-LP-1-Endo-2		<input type="checkbox"/>	✓			
IR50-1-1mm-1		<input type="checkbox"/>	✓			
IR50-1-1mm-2		<input type="checkbox"/>	✓			
IR50-1-BF-1		<input type="checkbox"/>	✓			
IR50-1-BF-2		<input type="checkbox"/>	✓			
IR50-1-Endo-1		<input type="checkbox"/>	✓			
IR50-1-Endo-2		<input type="checkbox"/>	✓			
M104-1-1mm-1		<input type="checkbox"/>	✓			
M104-1-1mm-2		<input type="checkbox"/>	✓			
M104-1-BF-1		<input type="checkbox"/>	✓			
M104-1-BF-2		<input type="checkbox"/>	✓			
Ladder		<input type="checkbox"/>	✓			

Chip Lot #

Reagent Kit Lot #

Chip Comments :

Assay Class: High Sensitivity DNA Assay
Data Path: C:\...ents and Settings\Bioanalyzer\2012-08-10\2012-08-10_004.xad

Created: 8/10/2012 1:48:17 PM
Modified: 8/10/2012 2:31:58 PM

Electrophoresis Assay Details

General Analysis Settings

Number of Available Sample and Ladder Wells (Max.) : 12
Minimum Visible Range [s] : 32
Maximum Visible Range [s] : 138
Start Analysis Time Range [s] : 33
End Analysis Time Range [s] : 137.5
Ladder Concentration [pg/μl] : 1950
Uses Standard Area for Ladder Fragments
Lower Marker Concentration [pg/μl] : 125
Upper Marker Concentration [pg/μl] : 75
Used Upper Marker for Quantitation
Standard Curve Fit is Point to Point
Show Data Aligned to Lower and Upper Marker

Integrator Settings

Integration Start Time [s] : 33.05
Integration End Time [s] : 137
Slope Threshold : 0.8
Height Threshold [FU] : 5
Area Threshold : 0.1
Width Threshold [s] : 0.6
Baseline Plateau [s] : 0.5

Filter Settings

Filter Width [s] : 0.5
Polynomial Order : 4

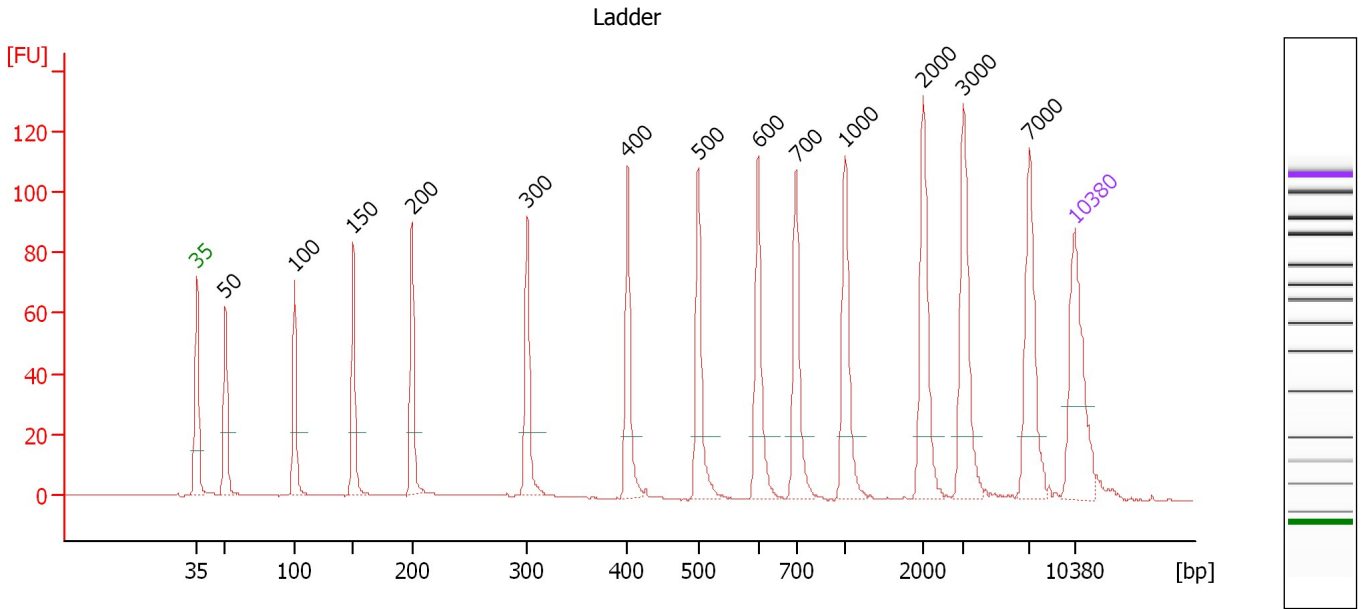
Ladder

Ladder Peak	Size	Area
1	35	160
2	50	210
3	100	208
4	150	221
5	200	242
6	300	270
7	400	305
8	500	306
9	600	336
10	700	321
11	1000	366
12	2000	413
13	3000	411
14	7000	400
15	10380	214

Assay Class: High Sensitivity DNA Assay
 Data Path: C:\...ents and Settings\Bioanalyzer\2012-08-10\2012-08-10_004.xad

Created: 8/10/2012 1:48:17 PM
 Modified: 8/10/2012 2:31:58 PM

Electropherogram Summary



Overall Results for Ladder

Noise: 0.1

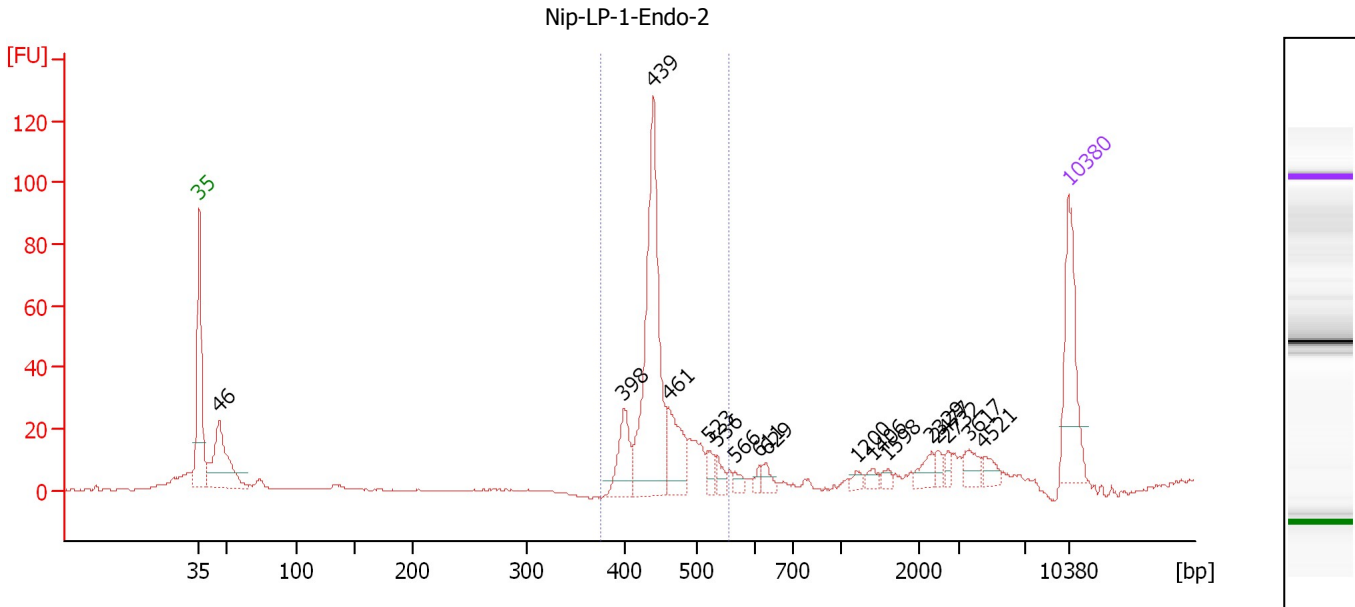
Peak table for Ladder

Peak	Size [bp]	Conc. [pg/μl]	Molarity [pmol/l]	Observations
1	35	125.00	5,411.3	Lower Marker
2	50	150.00	4,545.5	Ladder Peak
3	100	150.00	2,272.7	Ladder Peak
4	150	150.00	1,515.2	Ladder Peak
5	200	150.00	1,136.4	Ladder Peak
6	300	150.00	757.6	Ladder Peak
7	400	150.00	568.2	Ladder Peak
8	500	150.00	454.5	Ladder Peak
9	600	150.00	378.8	Ladder Peak
10	700	150.00	324.7	Ladder Peak
11	1,000	150.00	227.3	Ladder Peak
12	2,000	150.00	113.6	Ladder Peak
13	3,000	150.00	75.8	Ladder Peak
14	7,000	150.00	32.5	Ladder Peak
15	10,380	75.00	10.9	Upper Marker

Assay Class: High Sensitivity DNA Assay
 Data Path: C:\...ents and Settings\Bioanalyzer\2012-08-10\2012-08-10_004.xad

Created: 8/10/2012 1:48:17 PM
 Modified: 8/10/2012 2:31:58 PM

Electropherogram Summary Continued ...



Overall Results for sample 1 : Nip-LP-1-Endo-2

Number of peaks found: 17 Corr. Area 1: 318.4
 Noise: 0.1

Peak table for sample 1 : Nip-LP-1-Endo-2

Peak	Size [bp]	Conc. [pg/μl]	Molarity [pmol/l]	Observations
1	35	125.00	5,411.3	Lower Marker
2	46	134.44	4,470.2	
3	398	52.19	198.7	
4	439	250.10	863.3	
5	461	63.49	208.7	
6	523	12.93	37.4	
7	536	11.90	33.7	
8	566	7.65	20.5	
9	611	6.28	15.6	
10	629	10.58	25.5	
11	1,200	6.00	7.6	
12	1,406	6.67	7.2	
13	1,598	5.79	5.5	
14	2,329	12.91	8.4	
15	2,477	7.51	4.6	
16	2,732	6.06	3.4	
17	3,617	14.56	6.1	
18	4,521	10.30	3.5	
19	10,380	75.00	10.9	Upper Marker

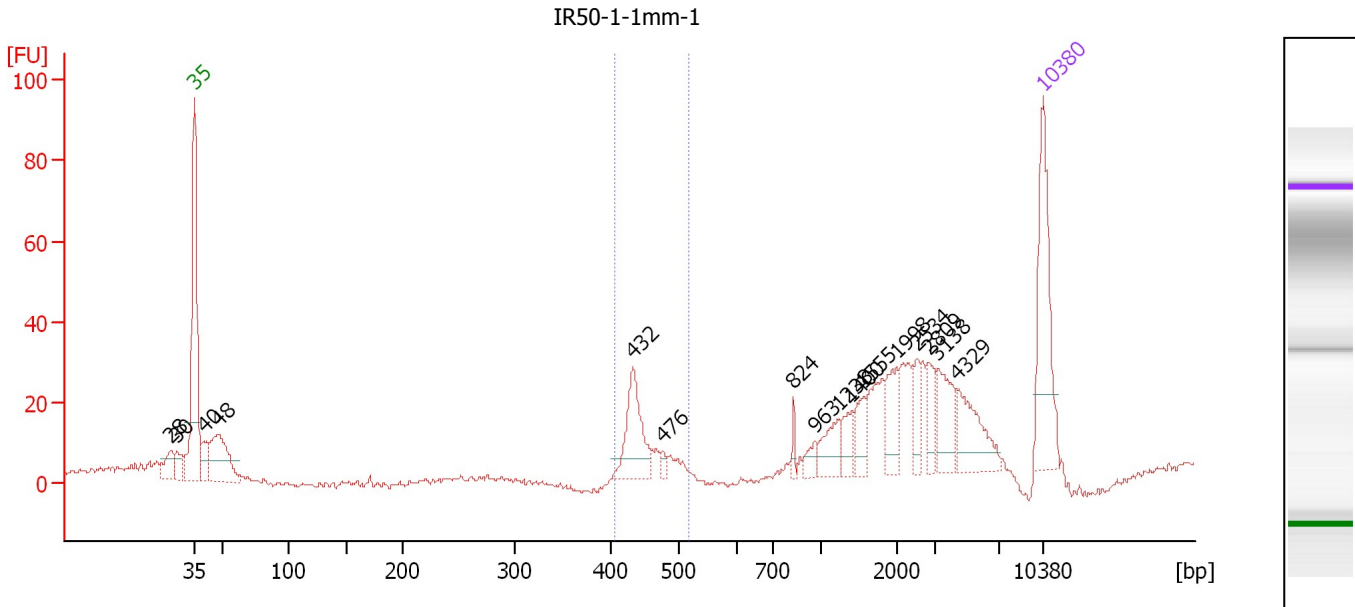
Region table for sample 1 : Nip-LP-1-Endo-2

From [bp]	To [bp]	Average Size [bp]	Molarity [pmol/l]	Conc. [pg/μl]	Corr. Area	% of Total	Size distribution in CV [%]	Color
376	557	449	1,298.3	383.16	318.4	59	7.6	Blue

Assay Class: High Sensitivity DNA Assay
 Data Path: C:\...ents and Settings\Bioanalyzer\2012-08-10\2012-08-10_004.xad

Created: 8/10/2012 1:48:17 PM
 Modified: 8/10/2012 2:31:58 PM

Electropherogram Summary Continued ...



Overall Results for sample 2 : IR50-1-1mm-1

Number of peaks found: 16 Corr. Area 1: 50.9
 Noise: 0.7

Peak table for sample 2 : IR50-1-1mm-1

Peak	Size [bp]	Conc. [pg/μl]	Molarity [pmol/l]	Observations
1	28	0.00	0.0	
2	30	0.00	0.0	
3	35	125.00	5,411.3	Lower Marker
4	40	25.64	964.6	
5	48	82.88	2,591.1	
6	432	63.46	222.4	
7	476	5.75	18.3	
8	824	6.44	11.8	
9	963	9.91	15.6	
10	1,238	23.51	28.8	
11	1,400	15.33	16.6	
12	1,555	18.73	18.3	
13	1,998	27.83	21.1	
14	2,534	15.51	9.3	
15	2,809	18.18	9.8	
16	3,138	31.49	15.2	
17	4,329	41.70	14.6	
18	10,380	75.00	10.9	Upper Marker

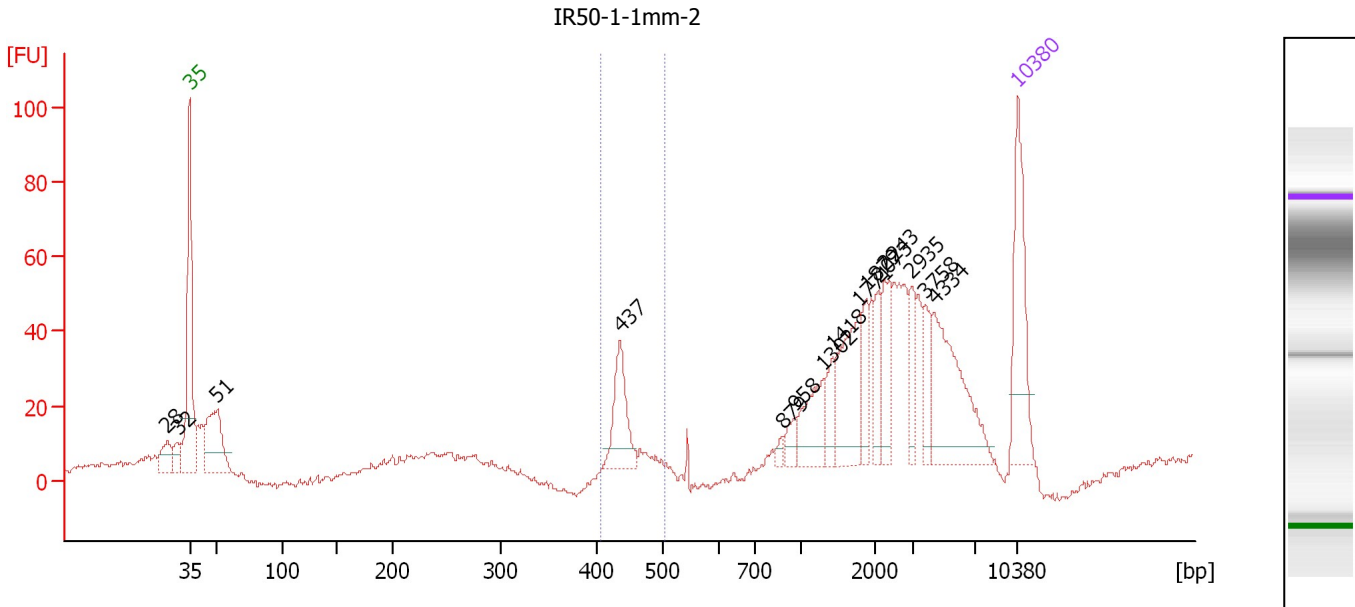
Region table for sample 2 : IR50-1-1mm-1

From [bp]	To [bp]	Average Size [bp]	Molarity [pmol/l]	Conc. [pg/μl]	Corr. Area	% of Total	Size distribution in CV [%]	Color
407	517	444	210.2	61.54	50.9	12	4.5	Blue

Assay Class: High Sensitivity DNA Assay
 Data Path: C:\...ents and Settings\Bioanalyzer\2012-08-10\2012-08-10_004.xad

Created: 8/10/2012 1:48:17 PM
 Modified: 8/10/2012 2:31:58 PM

Electropherogram Summary Continued ...



Overall Results for sample 3 : IR50-1-1mm-2

Number of peaks found: 15 Corr. Area 1: 53.5
 Noise: 0.8

Peak table for sample 3 : IR50-1-1mm-2

Peak	Size [bp]	Conc. [pg/μl]	Molarity [pmol/l]	Observations
1	28	0.00	0.0	
2	32	0.00	0.0	
3	35	125.00	5,411.3	Lower Marker
4	51	100.14	2,986.7	
5	437	64.37	223.3	
6	879	5.17	8.9	
7	958	12.32	19.5	
8	1,302	43.77	50.9	
9	1,418	21.35	22.8	
10	1,771	71.22	60.9	
11	1,879	26.36	21.3	
12	2,073	25.69	18.8	
13	2,243	38.60	26.1	
14	2,935	25.63	13.2	
15	3,758	29.09	11.7	
16	4,334	100.34	35.1	
17	10,380	75.00	10.9	Upper Marker

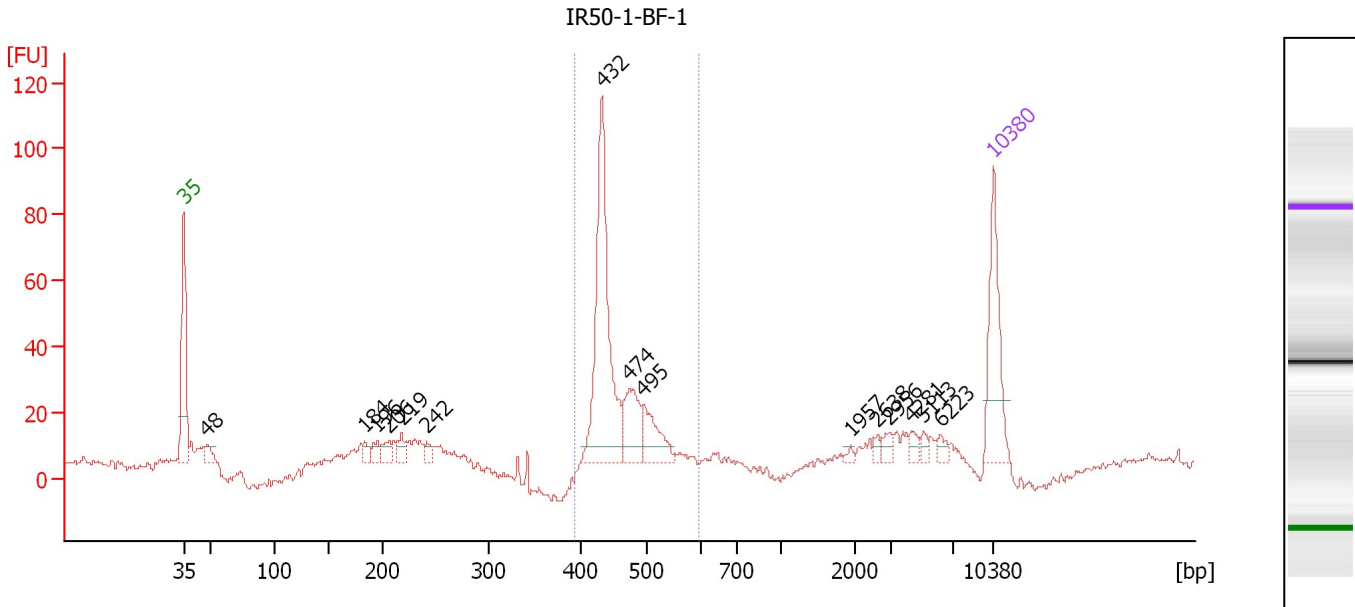
Region table for sample 3 : IR50-1-1mm-2

From [bp]	To [bp]	Average Size [bp]	Molarity [pmol/l]	Conc. [pg/μl]	Corr. Area	% of Total	Size distribution in CV [%]	Color
408	505	440	216.0	62.72	53.5	7	3.1	Blue

Assay Class: High Sensitivity DNA Assay
 Data Path: C:\...ents and Settings\Bioanalyzer\2012-08-10\2012-08-10_004.xad

Created: 8/10/2012 1:48:17 PM
 Modified: 8/10/2012 2:31:58 PM

Electropherogram Summary Continued ...



Overall Results for sample 4 : IR50-1-BF-1

Number of peaks found: 15 Corr. Area 1: 267.9
 Noise: 1.0

Peak table for sample 4 : IR50-1-BF-1

Peak	Size [bp]	Conc. [pg/μl]	Molarity [pmol/l]	Observations
1	35	125.00	5,411.3	Lower Marker
2	48	19.08	596.1	
3	184	11.01	90.8	
4	196	13.97	108.2	
5	206	17.61	129.5	
6	219	14.78	102.4	
7	242	9.22	57.7	
8	432	240.32	842.8	
9	474	58.44	186.7	
10	495	47.19	144.5	
11	1,957	3.23	2.5	
12	2,638	5.32	3.1	
13	2,956	8.32	4.3	
14	4,281	7.78	2.8	
15	5,113	6.04	1.8	
16	6,223	7.48	1.8	
17	10,380	75.00	10.9	Upper Marker

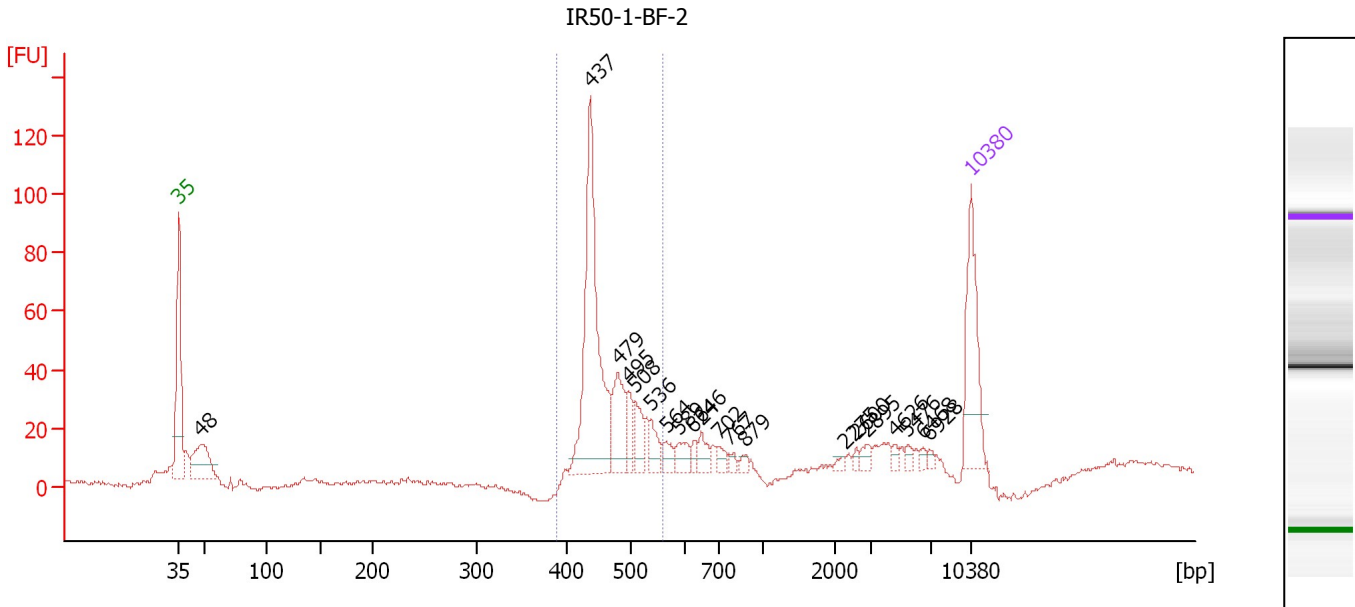
Region table for sample 4 : IR50-1-BF-1

From [bp]	To [bp]	Average Size [bp]	Molarity [pmol/l]	Conc. [pg/μl]	Corr. Area	% of Total	Size distribution in CV [%]	Color
393	594	456	1,195.3	358.34	267.9	55	8.0	Blue

Assay Class: High Sensitivity DNA Assay
 Data Path: C:\...ents and Settings\Bioanalyzer\2012-08-10\2012-08-10_004.xad

Created: 8/10/2012 1:48:17 PM
 Modified: 8/10/2012 2:31:58 PM

Electropherogram Summary Continued ...



Overall Results for sample 5 : IR50-1-BF-2

Number of peaks found: 20 Corr. Area 1: 353.9
 Noise: 0.7

Peak table for sample 5 : IR50-1-BF-2

Peak	Size [bp]	Conc. [pg/μl]	Molarity [pmol/l]	Observations
1	35	125.00	5,411.3	Lower Marker
2	48	79.88	2,529.6	
3	437	249.98	867.5	
4	479	59.30	187.6	
5	495	23.84	73.0	
6	508	26.29	78.4	
7	536	21.55	60.9	
8	564	12.77	34.3	
9	589	16.86	43.4	
10	624	7.79	18.9	
11	646	14.68	34.4	
12	702	9.66	20.9	
13	767	5.37	10.6	
14	879	5.39	9.3	
15	2,275	3.65	2.4	
16	2,600	3.54	2.1	
17	2,895	7.16	3.7	
18	4,626	4.28	1.4	
19	5,476	4.93	1.4	
20	6,468	3.59	0.8	
21	6,928	3.57	0.8	
22	10,380	75.00	10.9	Upper Marker

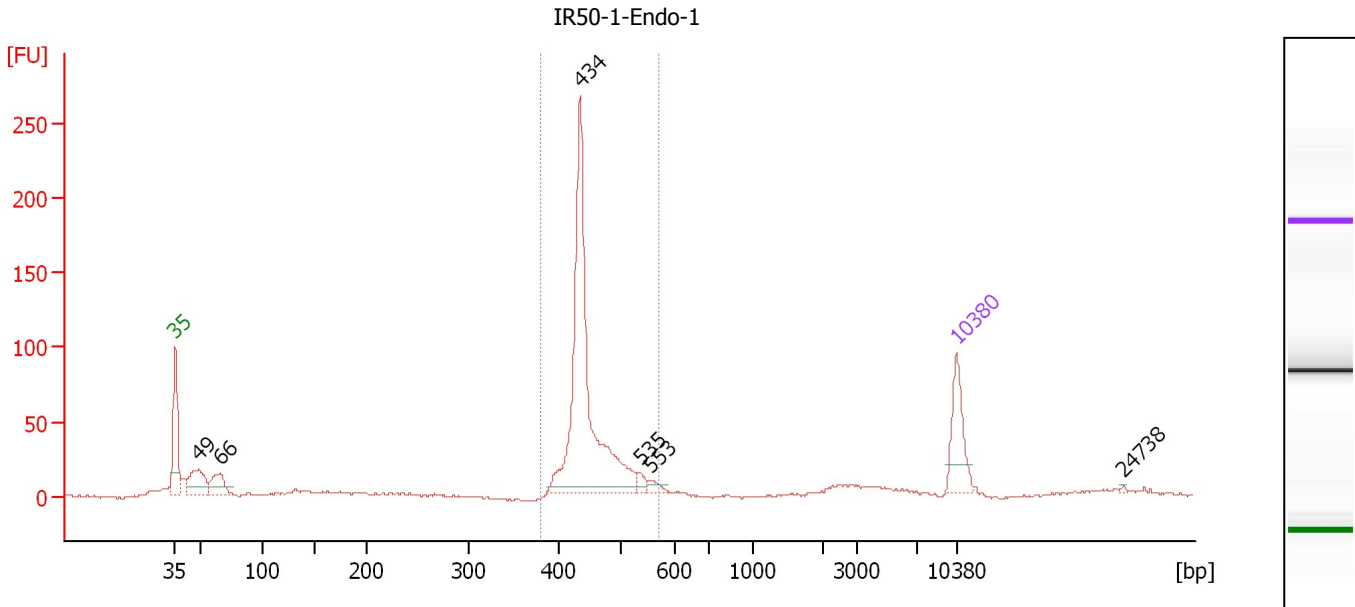
Region table for sample 5 : IR50-1-BF-2

From [bp]	To [bp]	Average Size [bp]	Molarity [pmol/l]	Conc. [pg/μl]	Corr. Area	% of Total	Size distribution in CV [%]	Color
389	557	464	1,340.4	408.39	353.9	57	7.8	Blue

Assay Class: High Sensitivity DNA Assay
 Data Path: C:\...ents and Settings\Bioanalyzer\2012-08-10\2012-08-10_004.xad

Created: 8/10/2012 1:48:17 PM
 Modified: 8/10/2012 2:31:58 PM

Electropherogram Summary Continued ...



Overall Results for sample 6 : IR50-1-Endo-1

Number of peaks found: 6 Corr. Area 1: 565.9
 Noise: 0.8

Peak table for sample 6 : IR50-1-Endo-1

Peak	Size [bp]	Conc. [pg/μl]	Molarity [pmol/l]	Observations
1	35	125.00	5,411.3	Lower Marker
2	49	101.86	3,150.7	
3	66	70.56	1,622.4	
4	434	584.94	2,042.0	
5	535	13.28	37.6	
6	553	14.12	38.7	
7	10,380	75.00	10.9	Upper Marker
8	24,738	0.00	0.0	

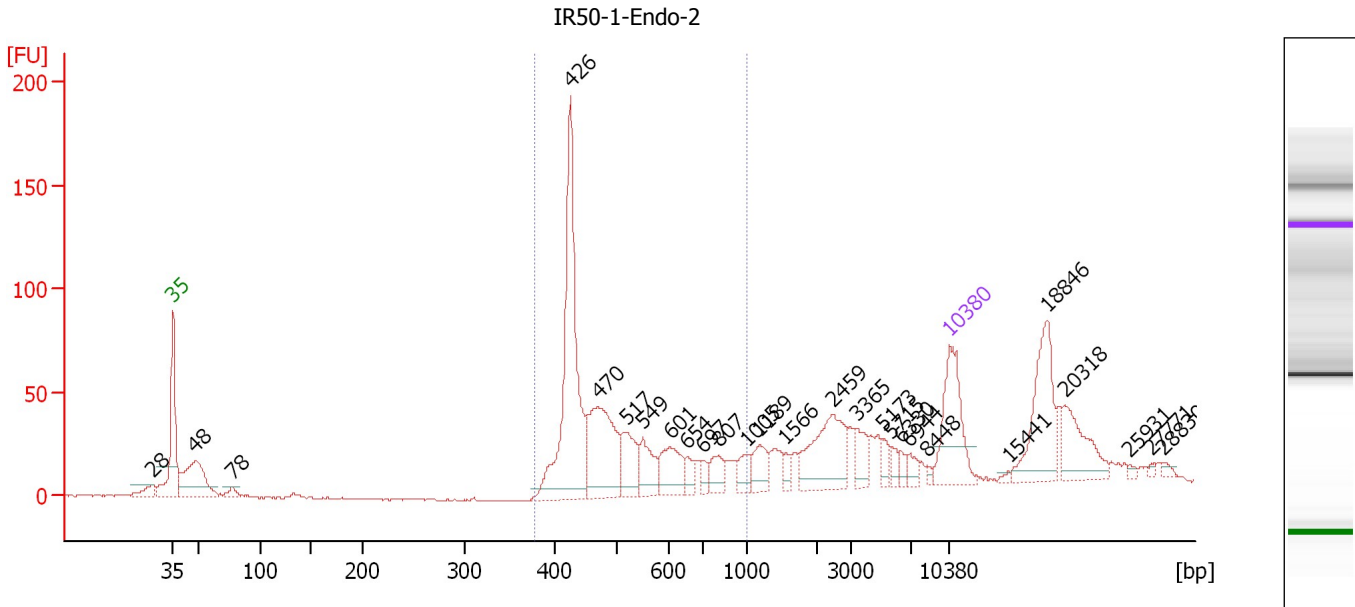
Region table for sample 6 : IR50-1-Endo-1

From [bp]	To [bp]	Average Size [bp]	Molarity [pmol/l]	Conc. [pg/μl]	Corr. Area	% of Total	Size distribution in CV [%]	Color
381	568	450	2,142.1	632.87	565.9	63	7.8	Blue

Assay Class: High Sensitivity DNA Assay
 Data Path: C:\...ents and Settings\Bioanalyzer\2012-08-10\2012-08-10_004.xad

Created: 8/10/2012 1:48:17 PM
 Modified: 8/10/2012 2:31:58 PM

Electropherogram Summary Continued ...



Overall Results for sample 7 : IR50-1-Endo-2

Number of peaks found: 27 Corr. Area 1: 641.8
 Noise: 0.3

Peak table for sample 7 : IR50-1-Endo-2

Peak	Size [bp]	Conc. [pg/μl]	Molarity [pmol/l]	Observations
1	28	0.00	0.0	
2	35	125.00	5,411.3	Lower Marker
3	48	120.07	3,781.4	
4	78	11.72	228.2	
5	426	282.70	1,005.3	
6	470	143.01	460.8	
7	517	49.90	146.2	
8	549	39.73	109.6	
9	601	48.56	122.3	
10	654	16.04	37.2	
11	697	9.61	20.9	
12	807	23.10	43.4	
13	1,005	17.90	27.0	
14	1,189	25.82	32.9	
15	1,566	8.24	8.0	
16	2,459	81.64	50.3	
17	3,365	21.59	9.7	
18	5,173	10.39	3.0	
19	5,715	9.29	2.5	
20	6,330	6.55	1.6	
21	6,944	9.53	2.1	
22	8,448	3.47	0.6	
23	10,380	75.00	10.9	Upper Marker
24	15,441	0.00	0.0	
25	18,846	0.00	0.0	
26	20,318	0.00	0.0	

Assay Class: High Sensitivity DNA Assay
Data Path: C:\...ents and Settings\Bioanalyzer\2012-08-10\2012-08-10_004.xad

Created: 8/10/2012 1:48:17 PM
Modified: 8/10/2012 2:31:58 PM

Electropherogram Summary Continued ...**... Peak table for sample 7 : IR50-1-Endo-2**

Peak	Size [bp]	Conc. [pg/ μ l]	Molarity [pmol/l]	Observations
27	25,931	0.00	0.0	
28	27,771	0.00	0.0	
29	28,830	0.00	0.0	

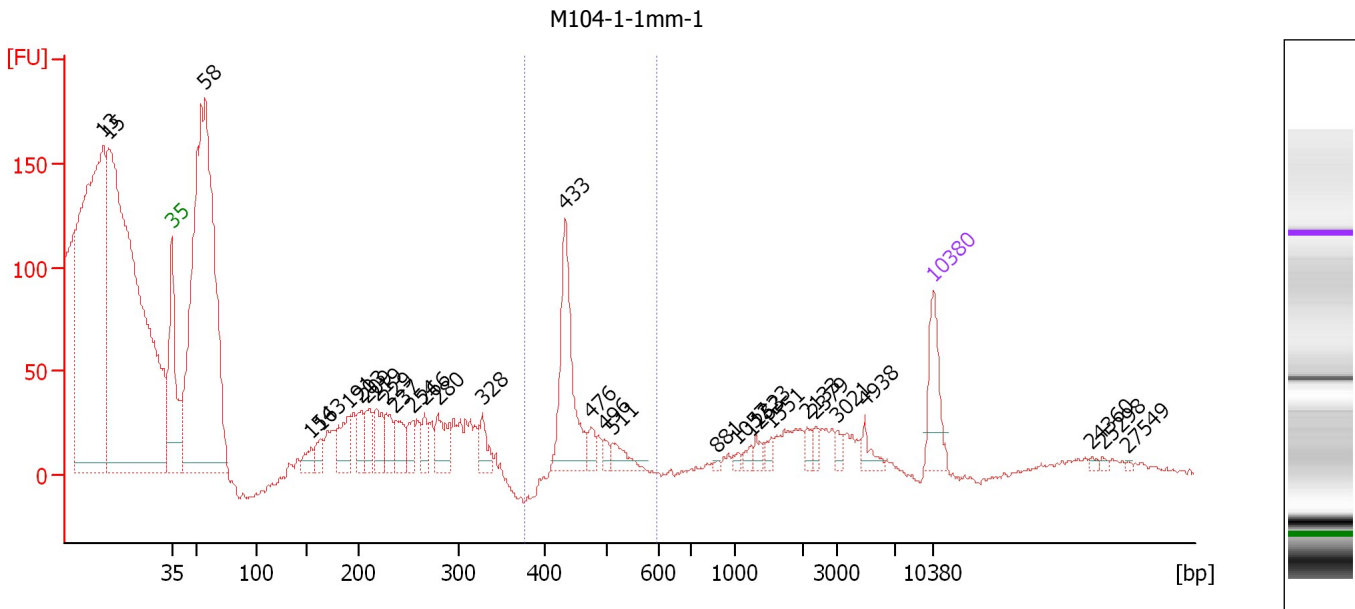
Region table for sample 7 : IR50-1-Endo-2

From [bp]	To [bp]	Average Size [bp]	Molarity [pmol/l]	Conc. [pg/ μ l]	Corr. Area	% of Total	Size distribution in CV [%]	Color
378	1,000	521	1,771.9	572.75	641.8	47	25.6	

Assay Class: High Sensitivity DNA Assay
 Data Path: C:\...ents and Settings\Bioanalyzer\2012-08-10\2012-08-10_004.xad

Created: 8/10/2012 1:48:17 PM
 Modified: 8/10/2012 2:31:58 PM

Electropherogram Summary Continued ...



Overall Results for sample 8 : M104-1-1mm-1

Number of peaks found: 31 Corr. Area 1: 42.0
 Noise: 1.1

Peak table for sample 8 : M104-1-1mm-1

Peak	Size [bp]	Conc. [pg/μl]	Molarity [pmol/l]	Observations
1	13	0.00	0.0	
2	15	0.00	0.0	
3	35	125.00	5,411.3	Lower Marker
4	58	1,703.76	44,872.7	
5	154	34.80	342.3	
6	163	36.51	338.5	
7	191	87.92	698.7	
8	203	51.84	387.4	
9	209	56.04	406.0	
10	219	70.57	488.8	
11	229	57.36	379.7	
12	237	64.05	408.8	
13	254	39.54	235.9	
14	266	38.09	216.8	
15	280	76.11	412.5	
16	328	41.41	191.3	
17	433	241.19	843.4	
18	476	26.26	83.6	
19	496	14.95	45.7	
20	511	37.14	110.1	
21	881	3.60	6.2	
22	1,057	7.52	10.8	
23	1,253	10.81	13.1	
24	1,323	13.39	15.3	
25	1,551	13.05	12.8	
26	2,133	13.47	9.6	

Assay Class: High Sensitivity DNA Assay
 Data Path: C:\...ents and Settings\Bioanalyzer\2012-08-10\2012-08-10_004.xad

Created: 8/10/2012 1:48:17 PM
 Modified: 8/10/2012 2:31:58 PM

Electropherogram Summary Continued ...

... Peak table for sample 8 : M104-1-1mm-1

Peak	Size [bp]	Conc. [pg/μl]	Molarity [pmol/l]	Observations
27	2,379	11.90	7.6	
28	3,021	12.82	6.4	
29	4,938	19.78	6.1	
30	10,380	75.00	10.9	Upper Marker
31	24,360	0.00	0.0	
32	25,298	0.00	0.0	
33	27,549	0.00	0.0	

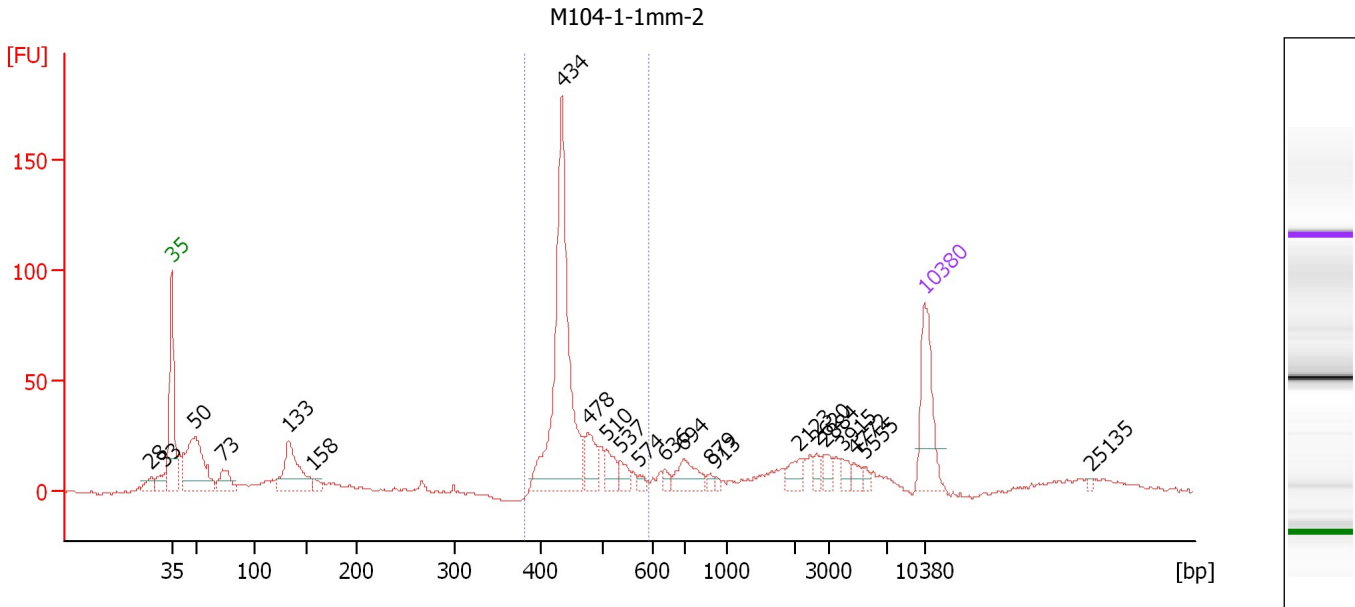
Region table for sample 8 : M104-1-1mm-1

From [bp]	To [bp]	Average Size [bp]	Molarity [pmol/l]	Conc. [pg/μl]	Corr. Area	% of Total	Size distribution in CV [%]	Color
376	598	433	180.2	51.52	42.0	7	0.8	

Assay Class: High Sensitivity DNA Assay
 Data Path: C:\...ents and Settings\Bioanalyzer\2012-08-10\2012-08-10_004.xad

Created: 8/10/2012 1:48:17 PM
 Modified: 8/10/2012 2:31:58 PM

Electropherogram Summary Continued ...



Overall Results for sample 9 : M104-1-1mm-2

Number of peaks found: 22 Corr. Area 1: 431.0
 Noise: 0.7

Peak table for sample 9 : M104-1-1mm-2

Peak	Size [bp]	Conc. [pg/μl]	Molarity [pmol/l]	Observations
1	28	0.00	0.0	
2	33	0.00	0.0	
3	35	125.00	5,411.3	Lower Marker
4	50	184.60	5,649.5	
5	73	41.87	873.5	
6	133	111.49	1,272.1	
7	158	10.80	103.8	
8	434	362.97	1,265.9	
9	478	40.64	128.8	
10	510	27.83	82.8	
11	537	16.92	47.8	
12	574	6.07	16.0	
13	636	8.69	20.7	
14	694	37.95	82.9	
15	879	4.78	8.2	
16	913	3.68	6.1	
17	2,123	16.95	12.1	
18	2,620	8.96	5.2	
19	2,884	11.96	6.3	
20	3,915	11.05	4.3	
21	4,772	9.39	3.0	
22	5,555	5.29	1.4	
23	10,380	75.00	10.9	Upper Marker
24	25,135	0.00	0.0	

Assay Class: High Sensitivity DNA Assay
Data Path: C:\...ents and Settings\Bioanalyzer\2012-08-10\2012-08-10_004.xad

Created: 8/10/2012 1:48:17 PM
Modified: 8/10/2012 2:31:58 PM

Electropherogram Summary Continued ...

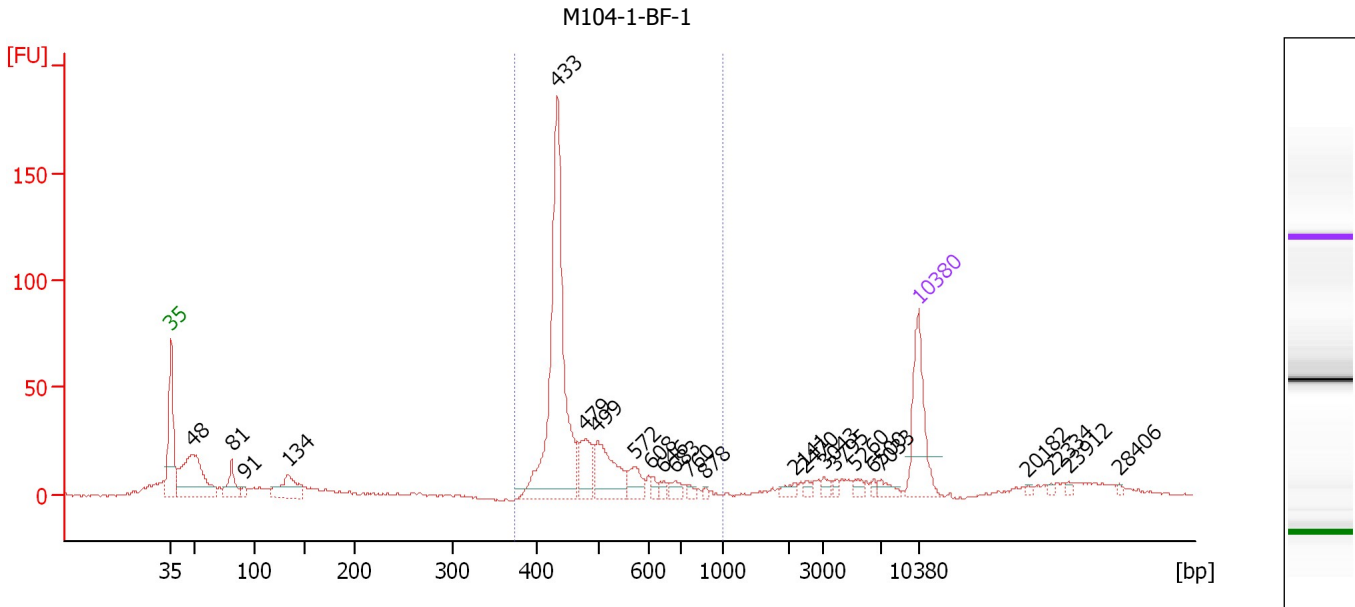
... Region table for sample 9 : M104-1-1mm-2

From [bp]	To [bp]	Average Size [bp]	Molarity [pmol/l]	Conc. [pg/μl]	Corr. Area	% of Total	Size distribution in CV [%]	Color
380	591	454	1,622.4	482.60	431.0	44	8.8	■

Assay Class: High Sensitivity DNA Assay
 Data Path: C:\...ents and Settings\Bioanalyzer\2012-08-10\2012-08-10_004.xad

Created: 8/10/2012 1:48:17 PM
 Modified: 8/10/2012 2:31:58 PM

Electropherogram Summary Continued ...



Overall Results for sample 10 : M104-1-BF-1

Number of peaks found: 24 Corr. Area 1: 493.0
 Noise: 0.6

Peak table for sample 10 : M104-1-BF-1

Peak	Size [bp]	Conc. [pg/μl]	Molarity [pmol/l]	Observations
1	35	125.00	5,411.3	Lower Marker
2	48	185.00	5,804.2	
3	81	43.55	813.7	
4	91	11.12	184.2	
5	134	62.22	705.1	
6	433	381.99	1,335.8	
7	479	49.02	155.0	
8	499	79.26	240.4	
9	572	28.01	74.2	
10	608	7.04	17.5	
11	646	8.21	19.2	
12	683	12.36	27.4	
13	760	5.33	10.6	
14	878	3.18	5.5	
15	2,141	7.84	5.5	
16	2,470	4.84	3.0	
17	3,043	6.71	3.3	
18	3,795	4.19	1.7	
19	5,260	6.89	2.0	
20	6,500	3.73	0.9	
21	7,033	9.85	2.1	
22	10,380	75.00	10.9	Upper Marker
23	20,182	0.00	0.0	
24	22,334	0.00	0.0	
25	23,912	0.00	0.0	
26	28,406	0.00	0.0	

Assay Class: High Sensitivity DNA Assay
Data Path: C:\...ents and Settings\Bioanalyzer\2012-08-10\2012-08-10_004.xad

Created: 8/10/2012 1:48:17 PM
Modified: 8/10/2012 2:31:58 PM

Electropherogram Summary Continued ...

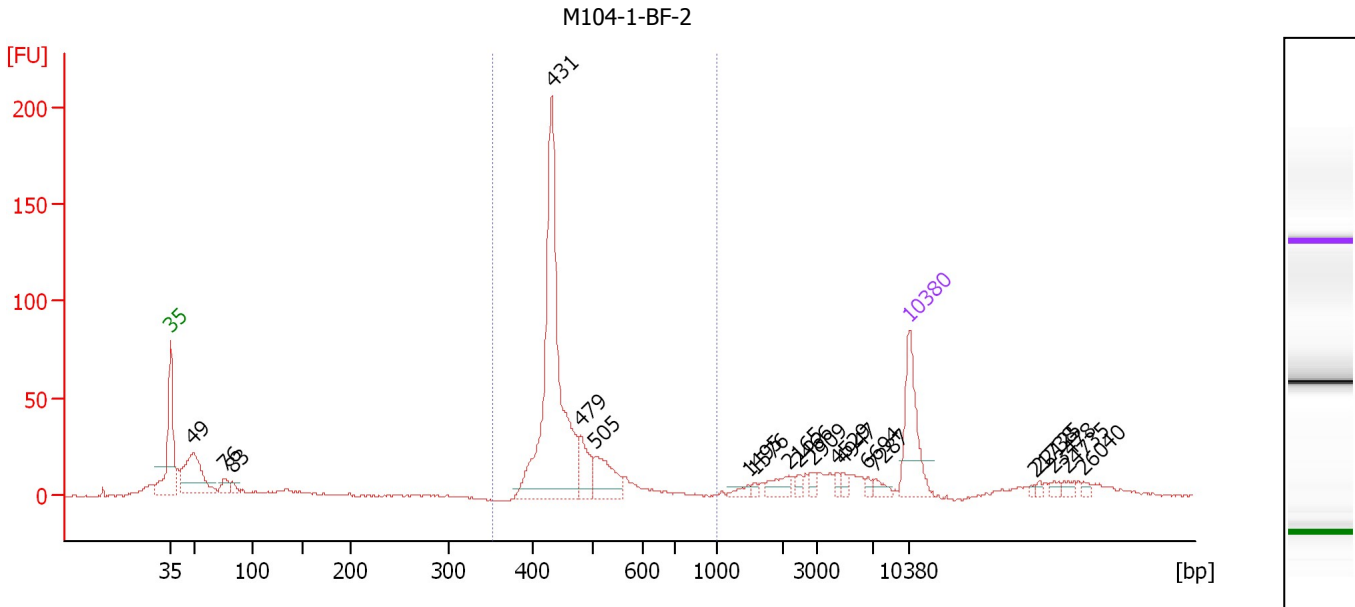
... Region table for sample 10 : M104-1-BF-1

From [bp]	To [bp]	Average Size [bp]	Molarity [pmol/l]	Conc. [pg/μl]	Corr. Area	% of Total	Size distribution in CV [%]	Color
374	1,000	477	1,818.9	557.57	493.0	58	17.1	■

Assay Class: High Sensitivity DNA Assay
 Data Path: C:\...ents and Settings\Bioanalyzer\2012-08-10\2012-08-10_004.xad

Created: 8/10/2012 1:48:17 PM
 Modified: 8/10/2012 2:31:58 PM

Electropherogram Summary Continued ...



Overall Results for sample 11 : M104-1-BF-2

Number of peaks found: 20 Corr. Area 1: 515.4
 Noise: 0.3

Peak table for sample 11 : M104-1-BF-2

Peak	Size [bp]	Conc. [pg/μl]	Molarity [pmol/l]	Observations
1	35	125.00	5,411.3	Lower Marker
2	49	145.89	4,501.2	
3	76	18.96	379.4	
4	83	10.86	199.2	
5	431	444.62	1,562.0	
6	479	48.25	152.5	
7	505	63.56	190.6	
8	1,495	8.26	8.4	
9	1,576	4.24	4.1	
10	2,165	18.51	13.0	
11	2,466	6.29	3.9	
12	2,909	8.38	4.4	
13	4,529	6.28	2.1	
14	4,947	7.50	2.3	
15	6,694	4.79	1.1	
16	7,287	10.20	2.1	
17	10,380	75.00	10.9	Upper Marker
18	21,738	0.00	0.0	
19	22,125	0.00	0.0	
20	23,478	0.00	0.0	
21	24,735	0.00	0.0	
22	26,040	0.00	0.0	

Region table for sample 11 : M104-1-BF-2

From [bp]	To [bp]	Average Size [bp]	Molarity [pmol/l]	Conc. [pg/μl]	Corr. Area	% of Total	Size distribution in CV [%]	Color
352	1,000	457	1,875.6	558.32	515.4	59	11.5	Blue

Assay Class: High Sensitivity DNA Assay
Data Path: C:\...ents and Settings\Bioanalyzer\2012-08-10\2012-08-10_004.xad

Created: 8/10/2012 1:48:17 PM
Modified: 8/10/2012 2:31:58 PM

Gel Image

