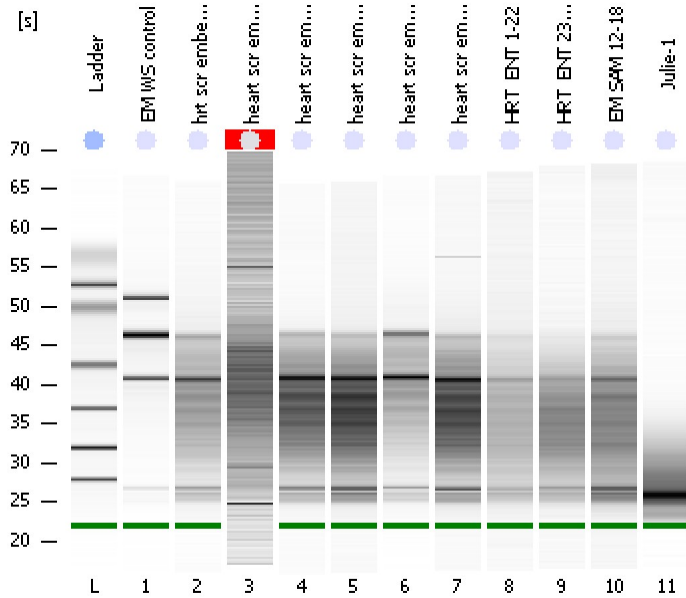


Assay Class: Eukaryote Total RNA Pico
Data Path: C:\...ents and Settings\Bioanalyzer\2012-08-10\2012-08-10_005.xad

Created: 8/10/2012 3:27:29 PM
Modified: 8/10/2012 3:50:24 PM

Electrophoresis File Run Summary



Instrument Information:

Instrument Name: DE13701086 Firmware: C.01.069
Serial#: DE13701086 Type: G2938B

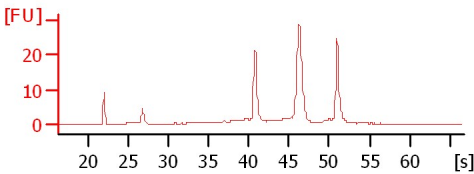
Assay Information:

Assay Origin Path: C:\Program Files\Agilent\2100 bioanalyzer\2100 expert\assays\RNA\Eukaryote Total RNA Pico Series II.xsy
Assay Class: Eukaryote Total RNA Pico
Version: 2.6
Assay Comments: Total RNA Analysis pg sensitivity (Eukaryote)
© Copyright 2003 - 2009 Agilent Technologies, Inc.

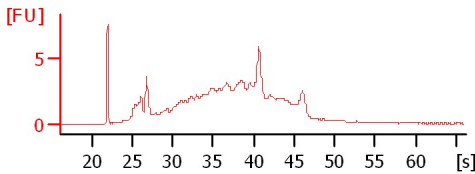
Chip Information:

Chip Lot #:
Reagent Kit Lot #:
Chip Comments:

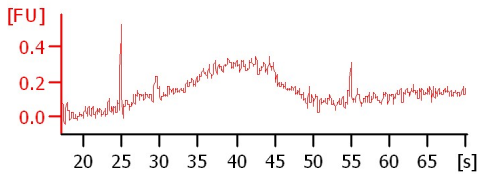
EM WS control
RIN: 9.20



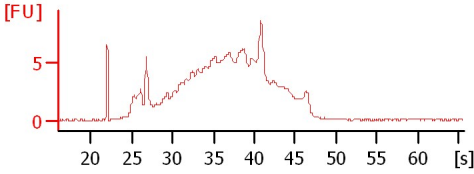
hrt scr embed 7/16
RIN: 4.10



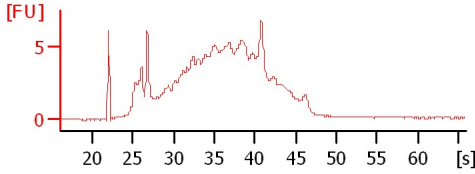
heart scr embed 7/13
RIN N/A



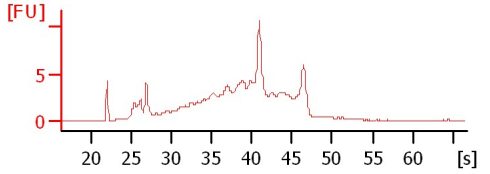
heart scr embed 7/31
RIN: 3.40



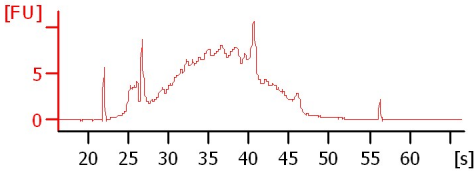
heart scr embed 7/30
RIN: 3.20



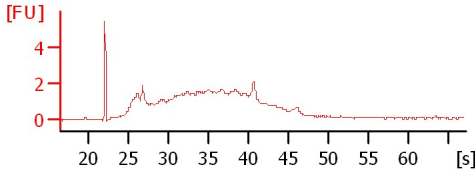
heart scr embed 8/7
RIN: 5.60



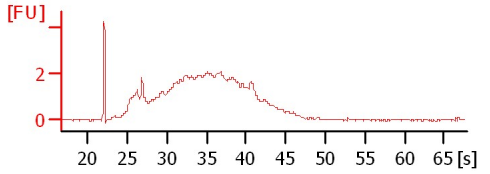
heart scr embed 8/1
RIN: 3.10



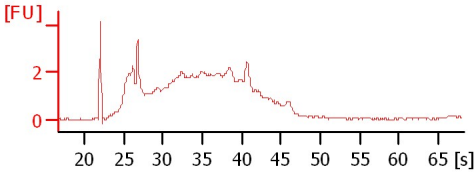
HRT_ENT 1-22
RIN: 3.40



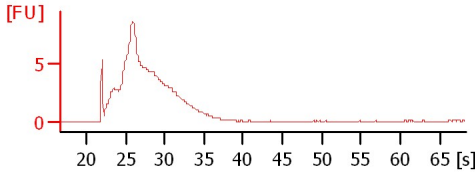
HRT_ENT 23-41
RIN: 2.60



EM SAM 12-18
RIN: 2.90



Julie-1
RIN: 2.20



Assay Class: Eukaryote Total RNA Pico
 Data Path: C:\...ents and Settings\Bioanalyzer\2012-08-10\2012-08-10_005.xad

Created: 8/10/2012 3:27:29 PM
 Modified: 8/10/2012 3:50:24 PM

Electrophoresis File Run Summary (Chip Summary)

Sample Name	Sample Comment	Status	Result Label	Result Color
EM WS control		✓	RIN: 9.20	
hrt scr embed 7/16		✓	RIN: 4.10	
heart scr embed 7/13		✓	RIN N/A	
heart scr embed 7/31		✓	RIN: 3.40	
heart scr embed 7/30		✓	RIN: 3.20	
heart scr embed 8/7		✓	RIN: 5.60	
heart scr embed 8/1		✓	RIN: 3.10	
HRT_ENT 1-22		✓	RIN: 3.40	
HRT_ENT 23-41		✓	RIN: 2.60	
EM SAM 12-18		✓	RIN: 2.90	
Julie-1		✓	RIN: 2.20	
Ladder		✓	All Other Samples	

Chip Lot #

Reagent Kit Lot #

Chip Comments :

Assay Class: Eukaryote Total RNA Pico
Data Path: C:\...ents and Settings\Bioanalyzer\2012-08-10\2012-08-10_005.xad

Created: 8/10/2012 3:27:29 PM
Modified: 8/10/2012 3:50:24 PM

Electrophoresis Assay Details

General Analysis Settings

Number of Available Sample and Ladder Wells (Max.) : 12
Minimum Visible Range [s] : 17
Maximum Visible Range [s] : 70
Start Analysis Time Range [s] : 18
End Analysis Time Range [s] : 69
Ladder Concentration [pg/ μ l] : 1000
Lower Marker Concentration [pg/ μ l] : 0
Upper Marker Concentration [pg/ μ l] : 0
Used Lower Marker for Quantitation
Standard Curve Fit is Logarithmic
Show Data Aligned to Lower Marker

Integrator Settings

Integration Start Time [s] : 18
Integration End Time [s] : 69
Slope Threshold : 0.6
Height Threshold [FU] : 0.5
Area Threshold : 0.2
Width Threshold [s] : 0.3
Baseline Plateau [s] : 6

Filter Settings

Filter Width [s] : 0.5
Polynomial Order : 4

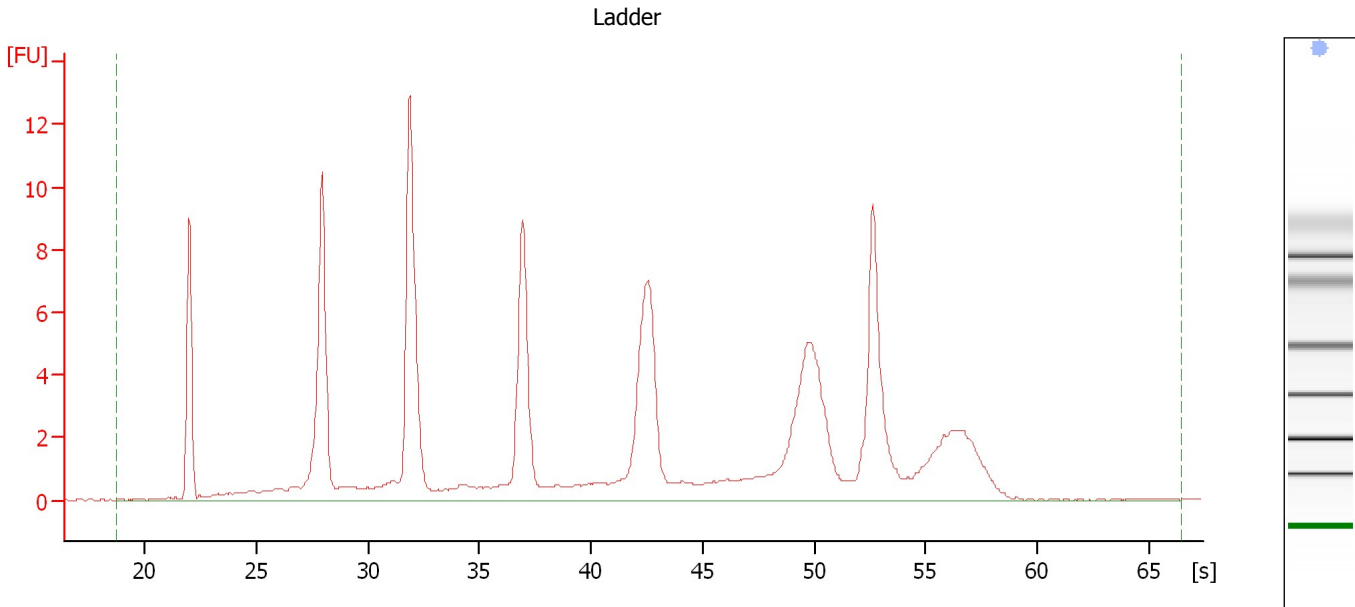
Ladder

Ladder Peak	Size
1	25
2	200
3	500
4	1000
5	2000
6	4000

Assay Class: Eukaryote Total RNA Pico
Data Path: C:\...ents and Settings\Bioanalyzer\2012-08-10\2012-08-10_005.xad

Created: 8/10/2012 3:27:29 PM
Modified: 8/10/2012 3:50:24 PM

Electropherogram Summary



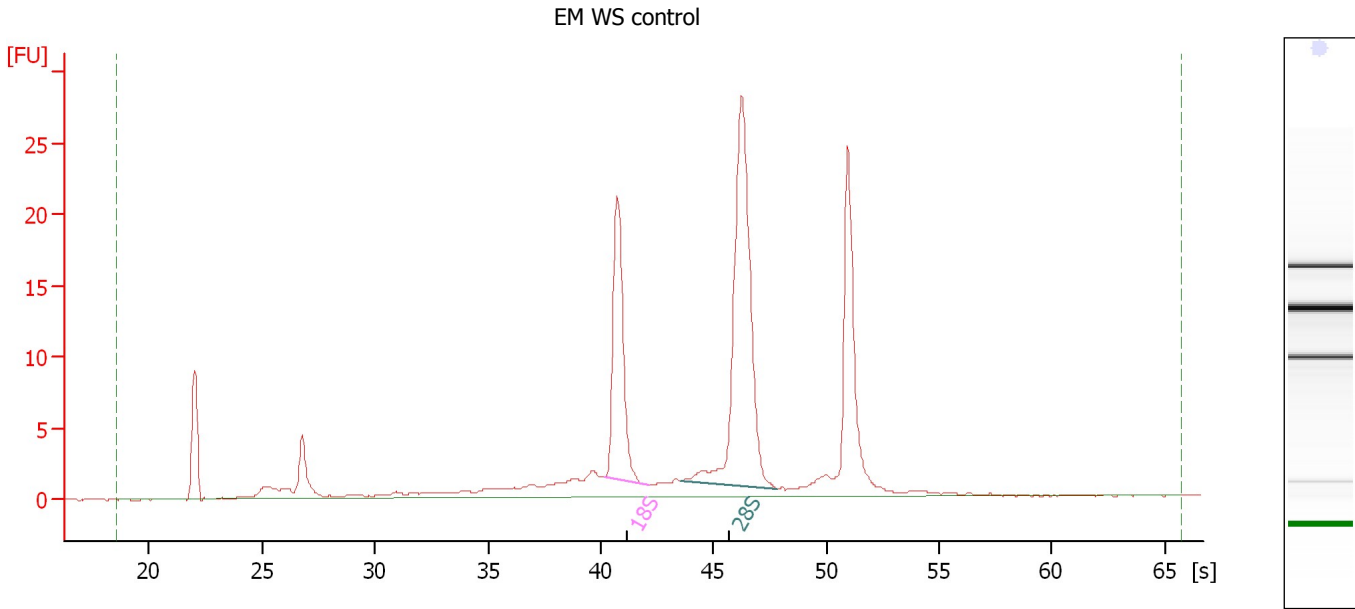
Overall Results for Ladder

RNA Area:	130.4	Result Flagging Color:	
RNA Concentration:	1,000 pg/ μ l	Result Flagging Label:	All Other Samples

Assay Class: Eukaryote Total RNA Pico
Data Path: C:\...ents and Settings\Bioanalyzer\2012-08-10\2012-08-10_005.xad

Created: 8/10/2012 3:27:29 PM
Modified: 8/10/2012 3:50:24 PM

Electropherogram Summary Continued ...



Overall Results for sample 1 : EM WS control

RNA Area: 156.1 RNA Integrity Number (RIN): 9.2 (B.02.08)
RNA Concentration: 1,196 pg/μl Result Flagging Color:
rRNA Ratio [28s / 18s]: 2.0 Result Flagging Label: RIN: 9.20

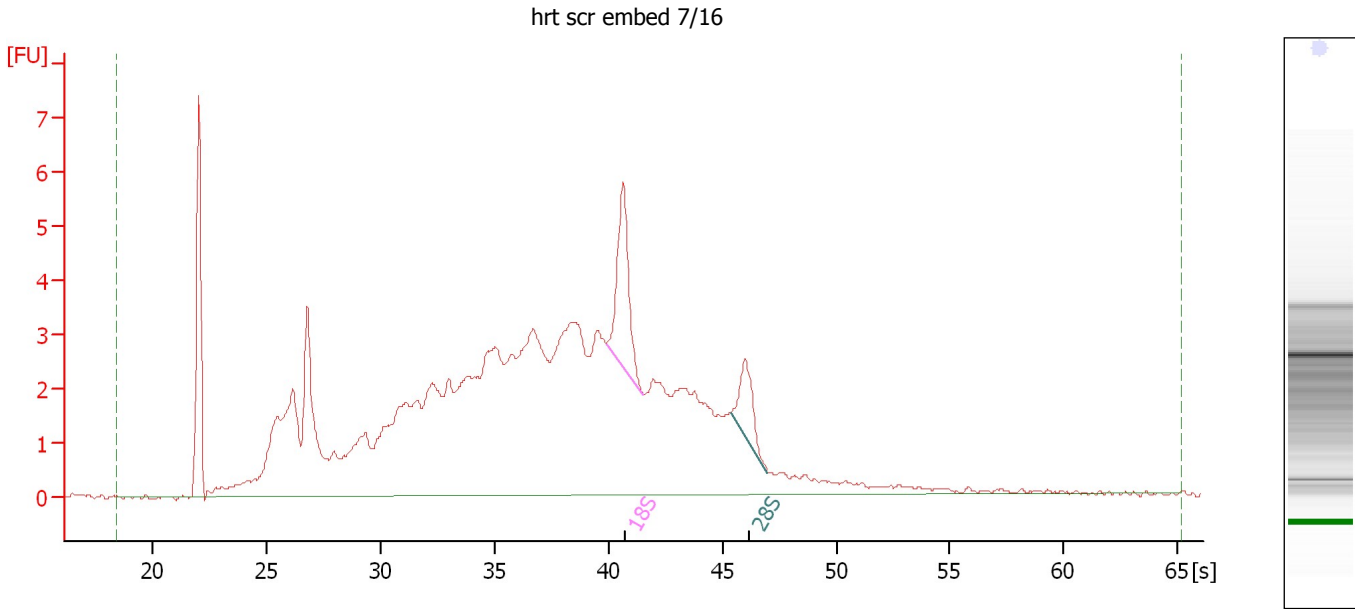
Fragment table for sample 1 : EM WS control

Name	Start Time [s]	End Time [s]	Area	% of total Area
18S	40.14	42.14	25.0	16.0
28S	43.52	47.81	50.0	32.0

Assay Class: Eukaryote Total RNA Pico
Data Path: C:\...ents and Settings\Bioanalyzer\2012-08-10\2012-08-10_005.xad

Created: 8/10/2012 3:27:29 PM
Modified: 8/10/2012 3:50:24 PM

Electropherogram Summary Continued ...



Overall Results for sample 2 : hrt scr embed 7/16

RNA Area: 128.1 RNA Integrity Number (RIN): 4.1 (B.02.08)
RNA Concentration: 982 pg/μl Result Flagging Color:
rRNA Ratio [28s / 18s]: 0.4 Result Flagging Label: RIN: 4.10

Fragment table for sample 2 : hrt scr embed 7/16

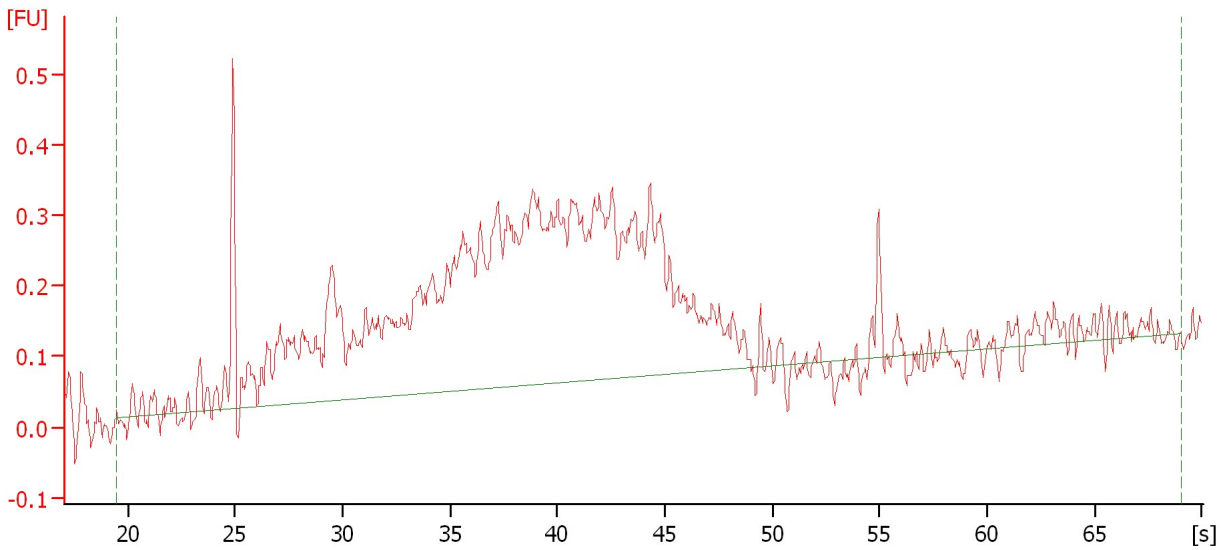
Name	Start Time [s]	End Time [s]	Area	% of total Area
18S	39.89	41.55	4.8	3.7
28S	45.37	46.97	2.1	1.6

Assay Class: Eukaryote Total RNA Pico
Data Path: C:\...ents and Settings\Bioanalyzer\2012-08-10\2012-08-10_005.xad

Created: 8/10/2012 3:27:29 PM
Modified: 8/10/2012 3:50:24 PM

Electropherogram Summary Continued ...

heart scr embed 7/13



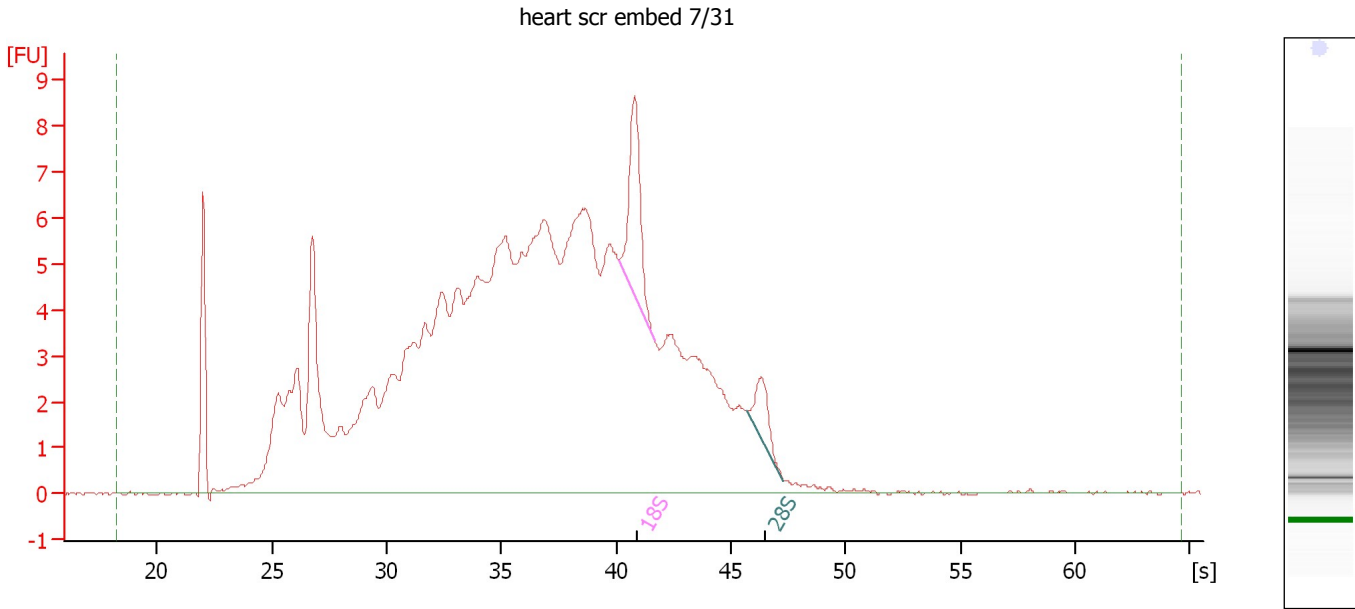
Overall Results for sample 3 : heart scr embed 7/13

RNA Concentration:	80 pg/ μ l	Result Flagging Color:	<input type="checkbox"/>
rRNA Ratio [28s / 18s]:	0.0	Result Flagging Label:	RIN N/A

Assay Class: Eukaryote Total RNA Pico
Data Path: C:\...ents and Settings\Bioanalyzer\2012-08-10\2012-08-10_005.xad

Created: 8/10/2012 3:27:29 PM
Modified: 8/10/2012 3:50:24 PM

Electropherogram Summary Continued ...



Overall Results for sample 4 : heart scr embed 7/31

RNA Area: 225.2 RNA Integrity Number (RIN): 3.4 (B.02.08)
RNA Concentration: 1,726 pg/μl Result Flagging Color:
rRNA Ratio [28s / 18s]: 0.3 Result Flagging Label: RIN: 3.40

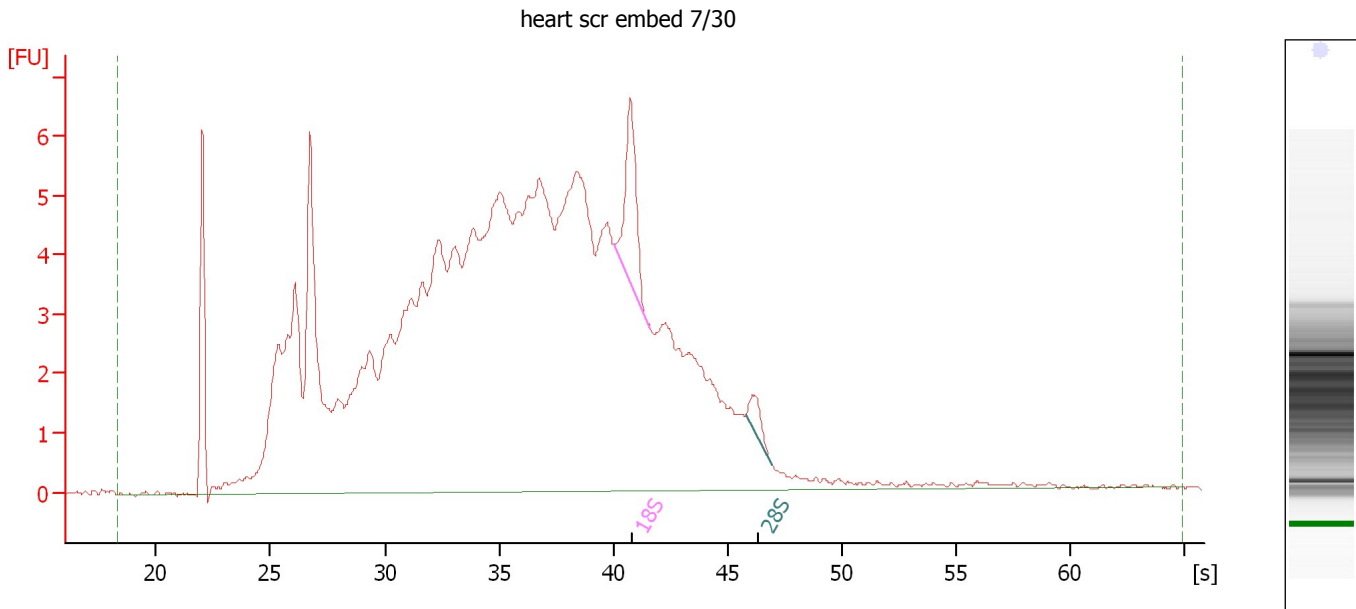
Fragment table for sample 4 : heart scr embed 7/31

Name	Start Time [s]	End Time [s]	Area	% of total Area
18S	40.11	41.66	5.9	2.6
28S	45.69	47.28	1.9	0.9

Assay Class: Eukaryote Total RNA Pico
 Data Path: C:\...ents and Settings\Bioanalyzer\2012-08-10\2012-08-10_005.xad

Created: 8/10/2012 3:27:29 PM
 Modified: 8/10/2012 3:50:24 PM

Electropherogram Summary Continued ...



Overall Results for sample 5 : heart scr embed 7/30

RNA Area:	208.5	RNA Integrity Number (RIN):	3.2 (B.02.08)
RNA Concentration:	1,598 pg/μl	Result Flagging Color:	
rRNA Ratio [28s / 18s]:	0.2	Result Flagging Label:	RIN: 3.20

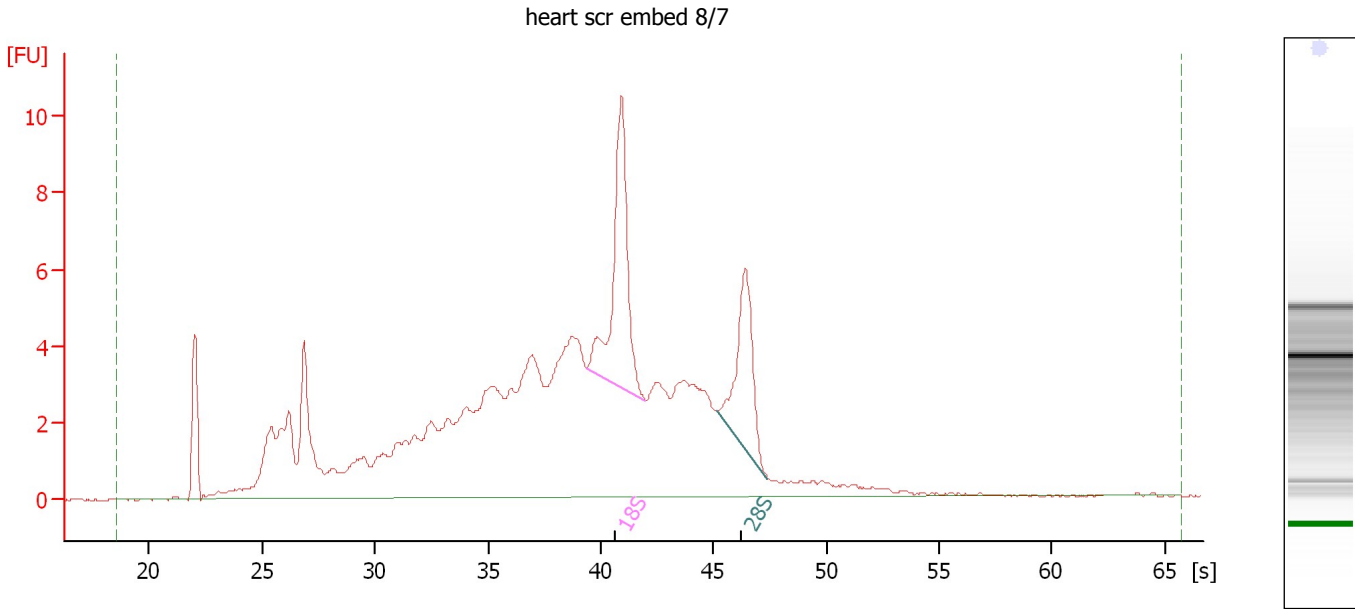
Fragment table for sample 5 : heart scr embed 7/30

Name	Start Time [s]	End Time [s]	Area	% of total Area
18S	40.00	41.60	4.1	2.0
28S	45.83	46.96	0.7	0.4

Assay Class: Eukaryote Total RNA Pico
 Data Path: C:\...ents and Settings\Bioanalyzer\2012-08-10\2012-08-10_005.xad

Created: 8/10/2012 3:27:29 PM
 Modified: 8/10/2012 3:50:24 PM

Electropherogram Summary Continued ...



Overall Results for sample 6 : heart scr embed 8/7

RNA Area:	164.2	RNA Integrity Number (RIN):	5.6 (B.02.08)
RNA Concentration:	1,259 pg/μl	Result Flagging Color:	
rRNA Ratio [28s / 18s]:	0.6	Result Flagging Label:	RIN: 5.60

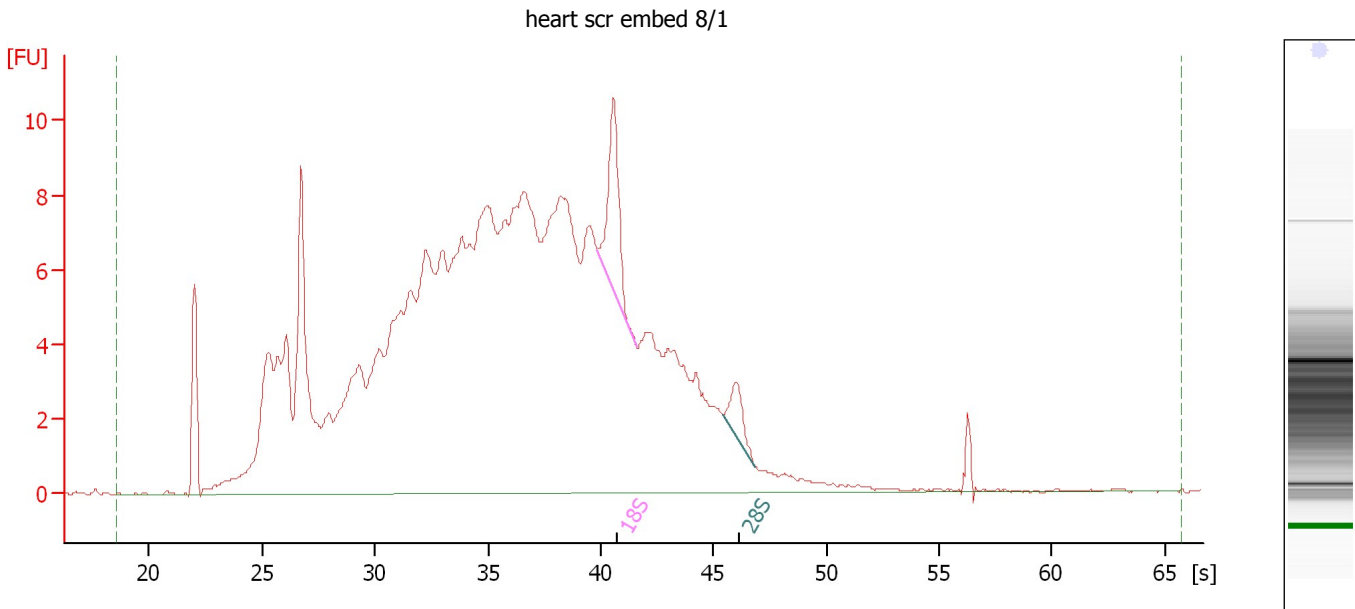
Fragment table for sample 6 : heart scr embed 8/7

Name	Start Time [s]	End Time [s]	Area	% of total Area
18S	39.38	42.00	13.0	7.9
28S	45.19	47.38	8.0	4.9

Assay Class: Eukaryote Total RNA Pico
 Data Path: C:\...ents and Settings\Bioanalyzer\2012-08-10\2012-08-10_005.xad

Created: 8/10/2012 3:27:29 PM
 Modified: 8/10/2012 3:50:24 PM

Electropherogram Summary Continued ...



Overall Results for sample 7 : heart scr embed 8/1

RNA Area:	315.7	RNA Integrity Number (RIN):	3.1 (B.02.08)
RNA Concentration:	2,420 pg/μl	Result Flagging Color:	
rRNA Ratio [28s / 18s]:	0.3	Result Flagging Label:	RIN: 3.10

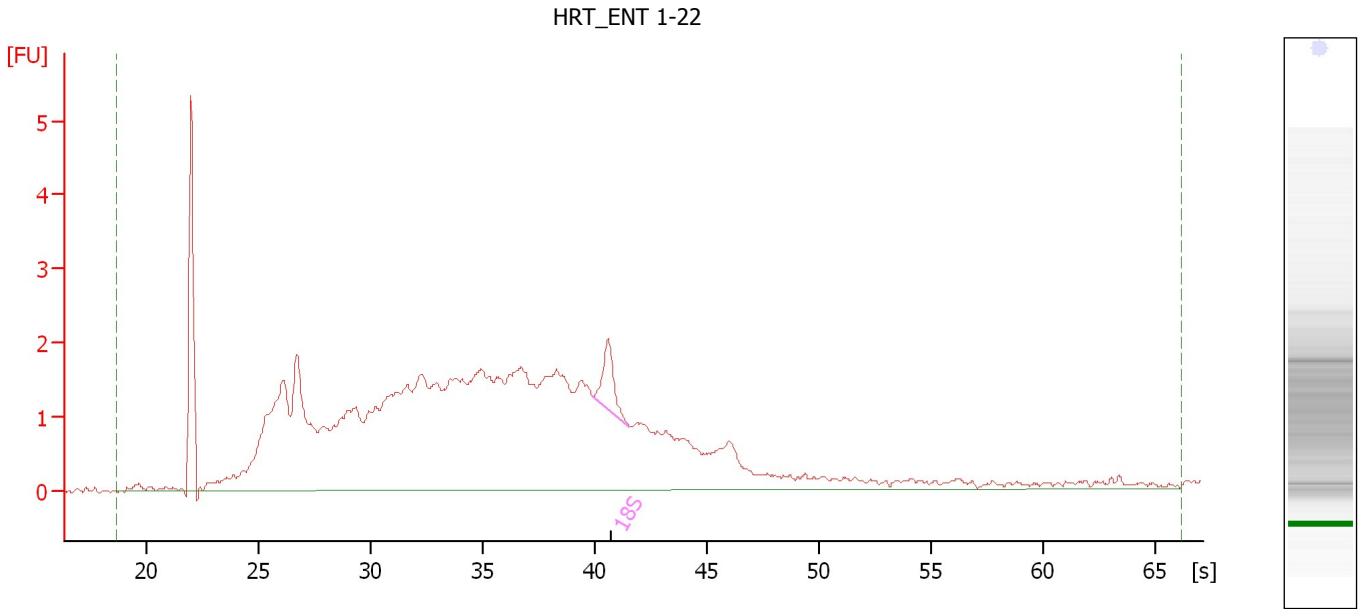
Fragment table for sample 7 : heart scr embed 8/1

Name	Start Time [s]	End Time [s]	Area	% of total Area
18S	39.86	41.57	6.8	2.2
28S	45.43	46.86	2.0	0.6

Assay Class: Eukaryote Total RNA Pico
Data Path: C:\...ents and Settings\Bioanalyzer\2012-08-10\2012-08-10_005.xad

Created: 8/10/2012 3:27:29 PM
Modified: 8/10/2012 3:50:24 PM

Electropherogram Summary Continued ...



Overall Results for sample 8 : HRT_ENT 1-22

RNA Area:	79.6	RNA Integrity Number (RIN):	3.4 (B.02.08)
RNA Concentration:	611 pg/μl	Result Flagging Color:	
rRNA Ratio [28s / 18s]:	0.0	Result Flagging Label:	RIN: 3.40

Fragment table for sample 8 : HRT_ENT 1-22

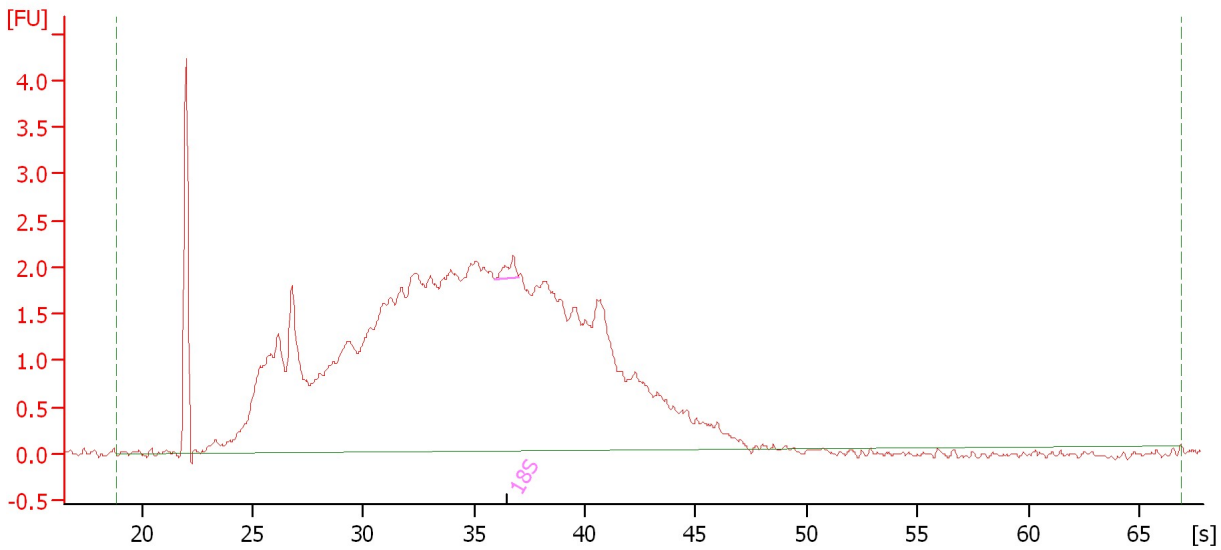
Name	Start Time [s]	End Time [s]	Area	% of total Area
18S	39.88	41.56	1.4	1.7

Assay Class: Eukaryote Total RNA Pico
Data Path: C:\...ents and Settings\Bioanalyzer\2012-08-10\2012-08-10_005.xad

Created: 8/10/2012 3:27:29 PM
Modified: 8/10/2012 3:50:24 PM

Electropherogram Summary Continued ...

HRT_ENT 23-41



Overall Results for sample 9 : HRT_ENT 23-41

RNA Area: 80.6 RNA Integrity Number (RIN): 2.6 (B.02.08)
RNA Concentration: 618 µg/µl Result Flagging Color:
rRNA Ratio [28s / 18s]: 0.0 Result Flagging Label: RIN: 2.60

Fragment table for sample 9 : HRT_ENT 23-41

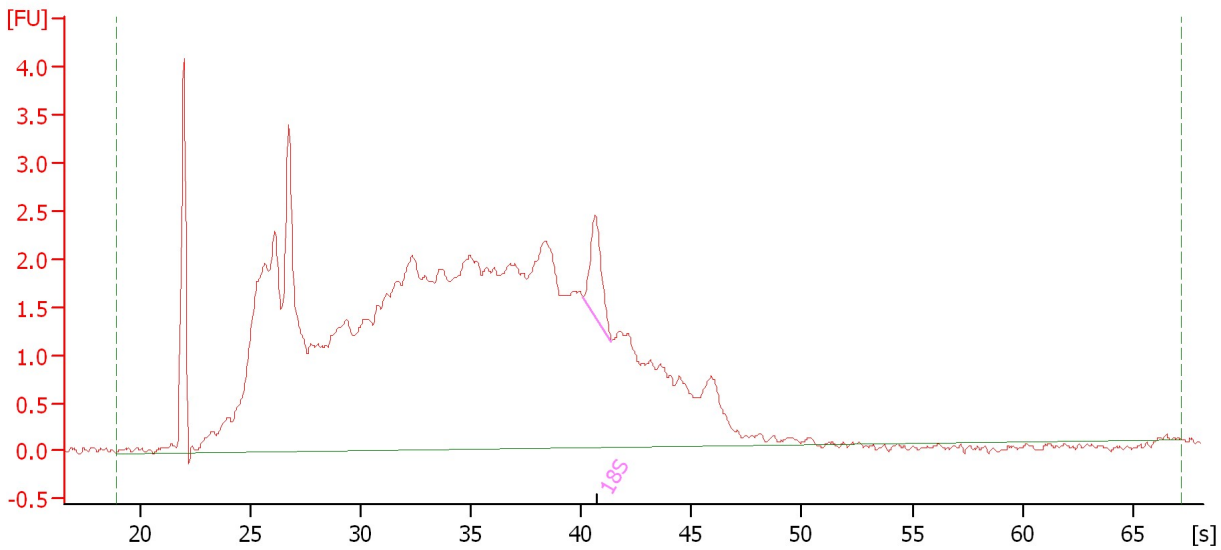
Name	Start Time [s]	End Time [s]	Area	% of total Area
18S	35.96	36.97	0.3	0.4

Assay Class: Eukaryote Total RNA Pico
Data Path: C:\...ents and Settings\Bioanalyzer\2012-08-10\2012-08-10_005.xad

Created: 8/10/2012 3:27:29 PM
Modified: 8/10/2012 3:50:24 PM

Electropherogram Summary Continued ...

EM SAM 12-18



Overall Results for sample 10 : EM SAM 12-18

RNA Area: 99.6 RNA Integrity Number (RIN): 2.9 (B.02.08)
RNA Concentration: 764 µg/µl Result Flagging Color:
rRNA Ratio [28s / 18s]: 0.0 Result Flagging Label: RIN: 2.90

Fragment table for sample 10 : EM SAM 12-18

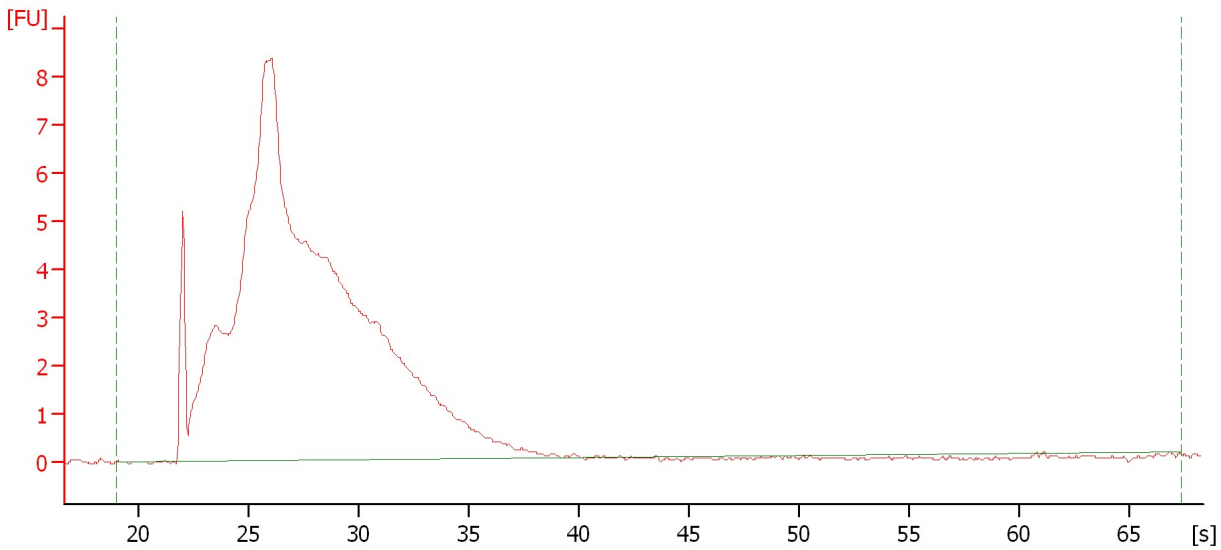
Name	Start Time [s]	End Time [s]	Area	% of total Area
18S	40.06	41.37	1.5	1.5

Assay Class: Eukaryote Total RNA Pico
Data Path: C:\...ents and Settings\Bioanalyzer\2012-08-10\2012-08-10_005.xad

Created: 8/10/2012 3:27:29 PM
Modified: 8/10/2012 3:50:24 PM

Electropherogram Summary Continued ...

Julie-1



Overall Results for sample 11 : Julie-1

RNA Area:	154.4	RNA Integrity Number (RIN):	2.2 (B.02.08)
RNA Concentration:	1,183 pg/μl	Result Flagging Color:	
rRNA Ratio [28s / 18s]:	0.0	Result Flagging Label:	RIN: 2.20

Assay Class: Eukaryote Total RNA Pico
Data Path: C:\...ents and Settings\Bioanalyzer\2012-08-10\2012-08-10_005.xad

Created: 8/10/2012 3:27:29 PM
Modified: 8/10/2012 3:50:24 PM

Gel Image

