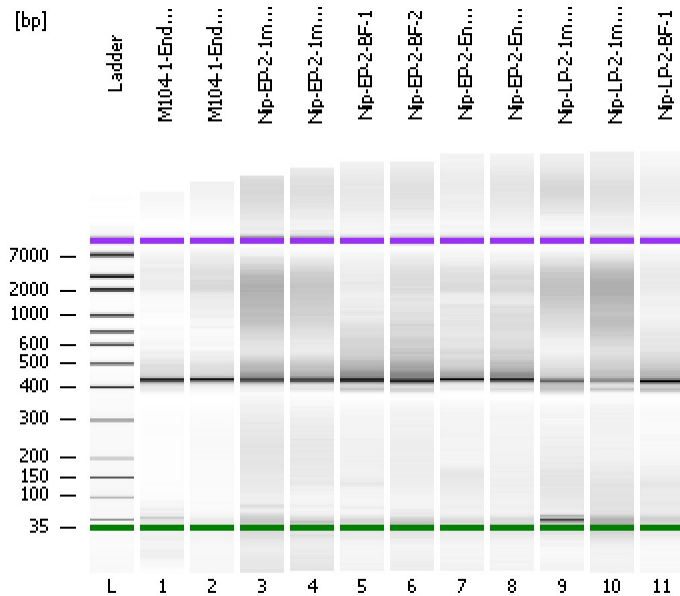


Assay Class: High Sensitivity DNA Assay
Data Path: C:\...ents and Settings\Bioanalyzer\2012-08-13\2012-08-13_001.xad

Created: 8/13/2012 9:11:18 AM
Modified: 8/13/2012 9:53:40 AM

Electrophoresis File Run Summary



Instrument Information:

Instrument Name: DE13701086 Firmware: C.01.069
Serial#: DE13701086 Type: G2938B

Assay Information:

Assay Origin Path: C:\Program Files\Agilent\2100 bioanalyzer\2100 expert\assays\dsDNA\High Sensitivity DNA.xsy
Assay Class: High Sensitivity DNA Assay
Version: 1.03
Assay Comments: Copyright © 2003-2010 Agilent Technologies

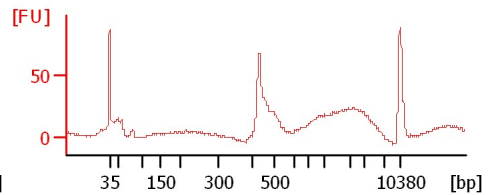
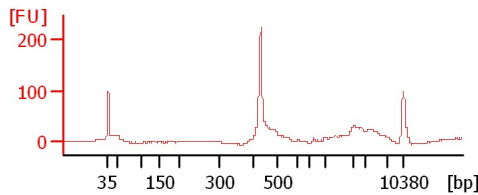
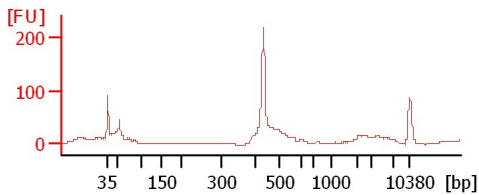
Chip Information:

Chip Lot #:
Reagent Kit Lot #:
Chip Comments:

M104-1-Endo-1

M104-1-Endo-2

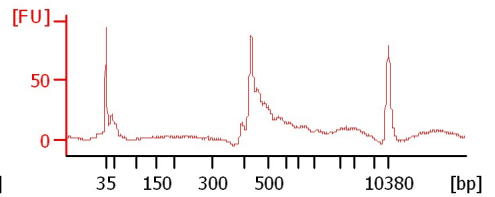
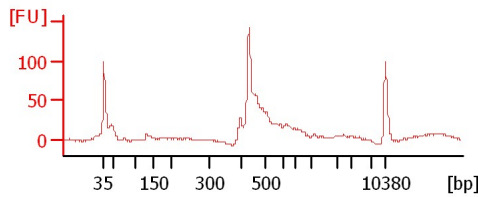
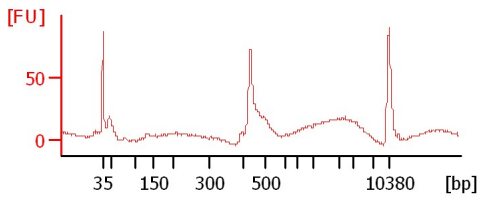
Nip-EP-2-1mm-1



Nip-EP-2-1mm-2

Nip-EP-2-BF-1

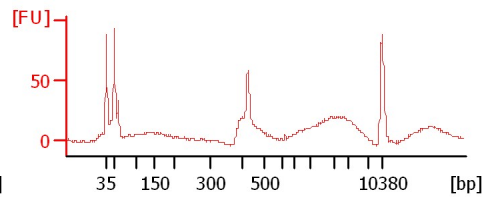
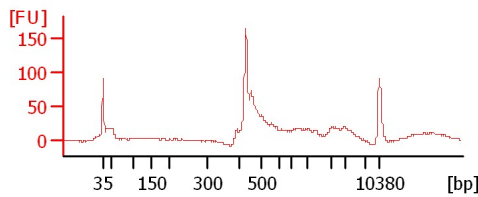
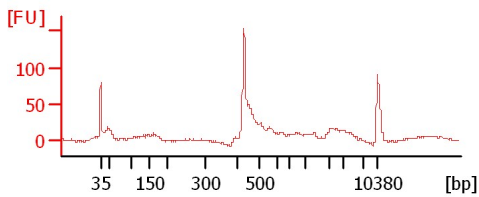
Nip-EP-2-BF-2



Nip-EP-2-Endo-1

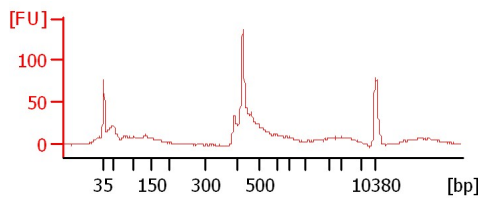
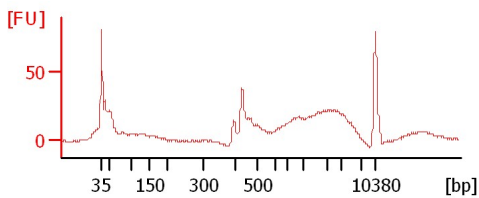
Nip-EP-2-Endo-2

Nip-LP-2-1mm-1



Nip-LP-2-1mm-2

Nip-LP-2-BF-1



Assay Class: High Sensitivity DNA Assay
Data Path: C:\...ents and Settings\Bioanalyzer\2012-08-13\2012-08-13_001.xad

Created: 8/13/2012 9:11:18 AM
Modified: 8/13/2012 9:53:40 AM

Electrophoresis File Run Summary (Chip Summary)

Sample Name	Sample Comment	Rest. Digest	Status	Observation	Result Label	Result Color
M104-1-Endo-1		<input type="checkbox"/>	✓			
M104-1-Endo-2		<input type="checkbox"/>	✓			
Nip-EP-2-1mm-1		<input type="checkbox"/>	✓			
Nip-EP-2-1mm-2		<input type="checkbox"/>	✓			
Nip-EP-2-BF-1		<input type="checkbox"/>	✓			
Nip-EP-2-BF-2		<input type="checkbox"/>	✓			
Nip-EP-2-Endo-1		<input type="checkbox"/>	✓			
Nip-EP-2-Endo-2		<input type="checkbox"/>	✓			
Nip-LP-2-1mm-1		<input type="checkbox"/>	✓			
Nip-LP-2-1mm-2		<input type="checkbox"/>	✓			
Nip-LP-2-BF-1		<input type="checkbox"/>	✓			
Ladder		<input type="checkbox"/>	✓			

Chip Lot #

Reagent Kit Lot #

Chip Comments :

Assay Class: High Sensitivity DNA Assay
Data Path: C:\...ents and Settings\Bioanalyzer\2012-08-13\2012-08-13_001.xad

Created: 8/13/2012 9:11:18 AM
Modified: 8/13/2012 9:53:40 AM

Electrophoresis Assay Details

General Analysis Settings

Number of Available Sample and Ladder Wells (Max.) : 12
Minimum Visible Range [s] : 32
Maximum Visible Range [s] : 138
Start Analysis Time Range [s] : 33
End Analysis Time Range [s] : 137.5
Ladder Concentration [pg/μl] : 1950
Uses Standard Area for Ladder Fragments
Lower Marker Concentration [pg/μl] : 125
Upper Marker Concentration [pg/μl] : 75
Used Upper Marker for Quantitation
Standard Curve Fit is Point to Point
Show Data Aligned to Lower and Upper Marker

Integrator Settings

Integration Start Time [s] : 33.05
Integration End Time [s] : 137
Slope Threshold : 0.8
Height Threshold [FU] : 5
Area Threshold : 0.1
Width Threshold [s] : 0.6
Baseline Plateau [s] : 0.5

Filter Settings

Filter Width [s] : 0.5
Polynomial Order : 4

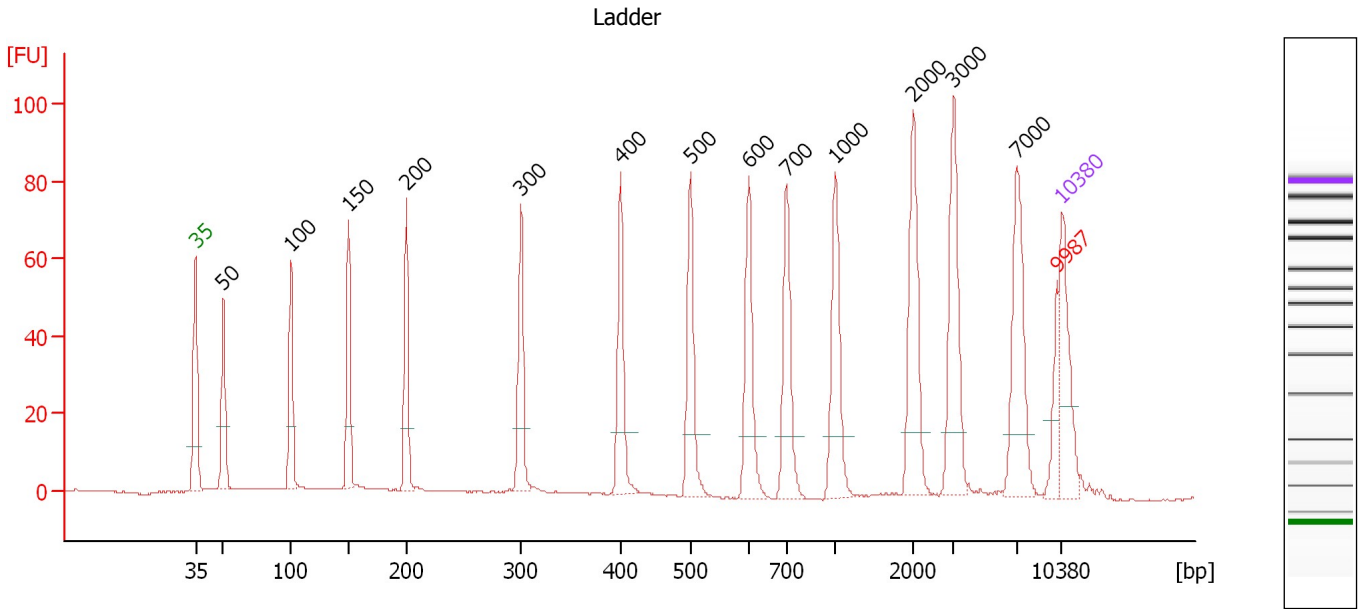
Ladder

Ladder Peak	Size	Area
1	35	160
2	50	210
3	100	208
4	150	221
5	200	242
6	300	270
7	400	305
8	500	306
9	600	336
10	700	321
11	1000	366
12	2000	413
13	3000	411
14	7000	400
15	10380	214

Assay Class: High Sensitivity DNA Assay
 Data Path: C:\...ents and Settings\Bioanalyzer\2012-08-13\2012-08-13_001.xad

Created: 8/13/2012 9:11:18 AM
 Modified: 8/13/2012 9:53:40 AM

Electropherogram Summary



Overall Results for Ladder

Noise: 0.2

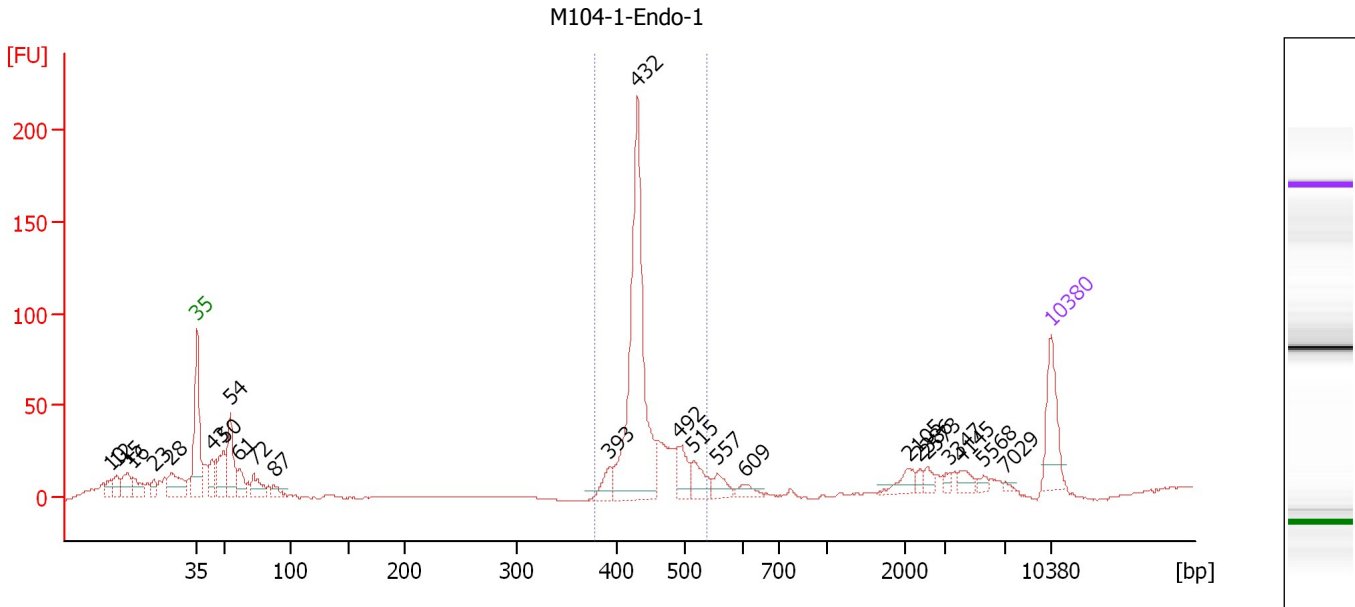
Peak table for Ladder

Peak	Size [bp]	Conc. [pg/μl]	Molarity [pmol/l]	Observations
1	35	125.00	5,411.3	Lower Marker
2	50	150.00	4,545.5	Ladder Peak
3	100	150.00	2,272.7	Ladder Peak
4	150	150.00	1,515.2	Ladder Peak
5	200	150.00	1,136.4	Ladder Peak
6	300	150.00	757.6	Ladder Peak
7	400	150.00	568.2	Ladder Peak
8	500	150.00	454.5	Ladder Peak
9	600	150.00	378.8	Ladder Peak
10	700	150.00	324.7	Ladder Peak
11	1,000	150.00	227.3	Ladder Peak
12	2,000	150.00	113.6	Ladder Peak
13	3,000	150.00	75.8	Ladder Peak
14	7,000	150.00	32.5	Ladder Peak
15	9,987	0.00	0.0	excluded peak
16	10,380	75.00	10.9	Upper Marker

Assay Class: High Sensitivity DNA Assay
 Data Path: C:\...ents and Settings\Bioanalyzer\2012-08-13\2012-08-13_001.xad

Created: 8/13/2012 9:11:18 AM
 Modified: 8/13/2012 9:53:40 AM

Electropherogram Summary Continued ...



Overall Results for sample 1 : M104-1-Endo-1

Number of peaks found: 25 Corr. Area 1: 456.7
 Noise: 0.2

Peak table for sample 1 : M104-1-Endo-1

Peak	Size [bp]	Conc. [pg/μl]	Molarity [pmol/l]	Observations
1	10	0.00	0.0	
2	12	0.00	0.0	
3	15	0.00	0.0	
4	16	0.00	0.0	
5	23	0.00	0.0	
6	28	0.00	0.0	
7	35	125.00	5,411.3	Lower Marker
8	43	56.79	1,991.9	
9	50	92.43	2,821.3	
10	54	127.28	3,551.2	
11	61	46.58	1,155.1	
12	72	53.57	1,129.1	
13	87	23.03	400.8	
14	393	33.56	129.2	
15	432	500.93	1,758.6	
16	492	51.99	160.1	
17	515	46.09	135.5	
18	557	28.73	78.2	
19	609	17.56	43.7	
20	2,105	23.45	16.9	
21	2,386	7.57	4.8	
22	2,573	13.14	7.7	
23	3,347	7.90	3.6	
24	4,145	14.81	5.4	
25	5,568	7.09	1.9	
26	7,029	3.41	0.7	

Assay Class: High Sensitivity DNA Assay
Data Path: C:\...ents and Settings\Bioanalyzer\2012-08-13\2012-08-13_001.xad

Created: 8/13/2012 9:11:18 AM
Modified: 8/13/2012 9:53:40 AM

Electropherogram Summary Continued ...**... Peak table for sample 1 : M104-1-Endo-1**

Peak	Size [bp]	Conc. [pg/ μ l]	Molarity [pmol/l]	Observations
27	10,380	75.00	10.9	Upper Marker

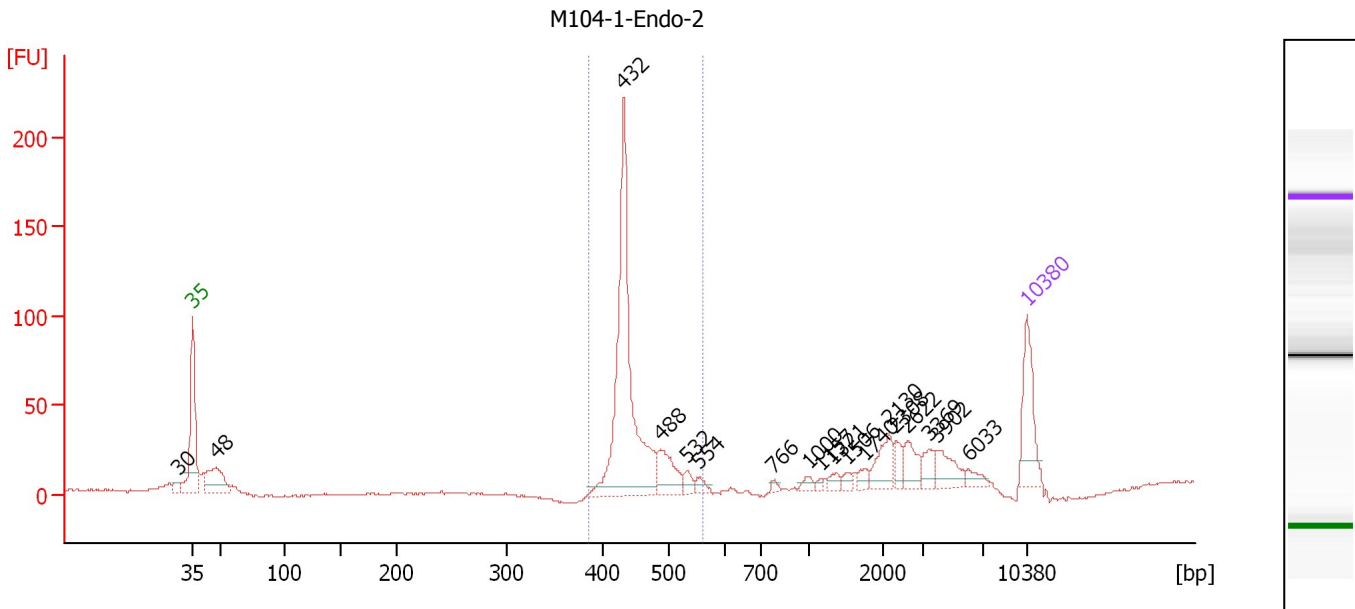
Region table for sample 1 : M104-1-Endo-1

From [bp]	To [bp]	Average Size [bp]	Molarity [pmol/l]	Conc. [pg/ μ l]	Corr. Area	% of Total	Size distribution in CV [%]	Color
378	540	444	2,217.0	646.93	456.7	47	7.0	

Assay Class: High Sensitivity DNA Assay
 Data Path: C:\...ents and Settings\Bioanalyzer\2012-08-13\2012-08-13_001.xad

Created: 8/13/2012 9:11:18 AM
 Modified: 8/13/2012 9:53:40 AM

Electropherogram Summary Continued ...



Overall Results for sample 2 : M104-1-Endo-2

Number of peaks found: 18 Corr. Area 1: 369.4
 Noise: 0.5

Peak table for sample 2 : M104-1-Endo-2

Peak	Size [bp]	Conc. [pg/μl]	Molarity [pmol/l]	Observations
1	30	0.00	0.0	
2	35	125.00	5,411.3	Lower Marker
3	48	104.67	3,311.6	
4	432	446.50	1,564.3	
5	488	66.65	207.0	
6	532	15.47	44.1	
7	554	12.74	34.9	
8	766	5.52	10.9	
9	1,000	9.37	14.2	
10	1,157	4.68	6.1	
11	1,321	11.02	12.6	
12	1,506	8.52	8.6	
13	1,740	11.81	10.3	
14	2,130	41.83	29.8	
15	2,308	18.32	12.0	
16	2,622	31.78	18.4	
17	3,369	20.38	9.2	
18	3,902	36.78	14.3	
19	6,033	12.53	3.1	
20	10,380	75.00	10.9	Upper Marker

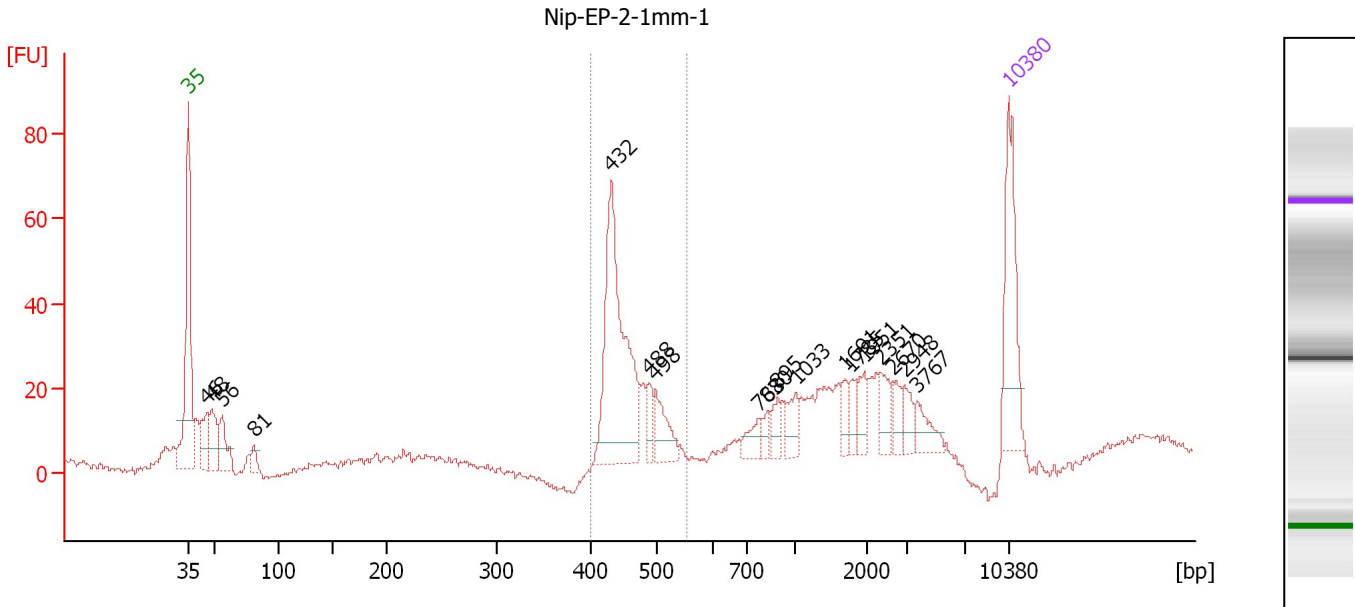
Region table for sample 2 : M104-1-Endo-2

From [bp]	To [bp]	Average Size [bp]	Molarity [pmol/l]	Conc. [pg/μl]	Corr. Area	% of Total	Size distribution in CV [%]	Color
386	561	447	1,567.6	460.71	369.4	59	6.5	Blue

Assay Class: High Sensitivity DNA Assay
 Data Path: C:\...ents and Settings\Bioanalyzer\2012-08-13\2012-08-13_001.xad

Created: 8/13/2012 9:11:18 AM
 Modified: 8/13/2012 9:53:40 AM

Electropherogram Summary Continued ...



Overall Results for sample 3 : Nip-EP-2-1mm-1

Number of peaks found: 18 Corr. Area 1: 199.1
 Noise: 0.7

Peak table for sample 3 : Nip-EP-2-1mm-1

Peak	Size [bp]	Conc. [pg/μl]	Molarity [pmol/l]	Observations
1	35	125.00	5,411.3	Lower Marker
2	46	46.50	1,532.9	
3	48	47.02	1,471.8	
4	56	43.39	1,171.1	
5	81	15.04	282.5	
6	432	218.59	767.4	
7	488	19.55	60.7	
8	498	36.41	110.7	
9	768	16.68	32.9	
10	830	8.36	15.3	
11	895	15.27	25.9	
12	1,033	19.98	29.3	
13	1,691	12.95	11.6	
14	1,785	11.22	9.5	
15	1,951	16.57	12.9	
16	2,351	18.68	12.0	
17	2,670	12.80	7.3	
18	2,948	14.41	7.4	
19	3,767	18.64	7.5	
20	10,380	75.00	10.9	Upper Marker

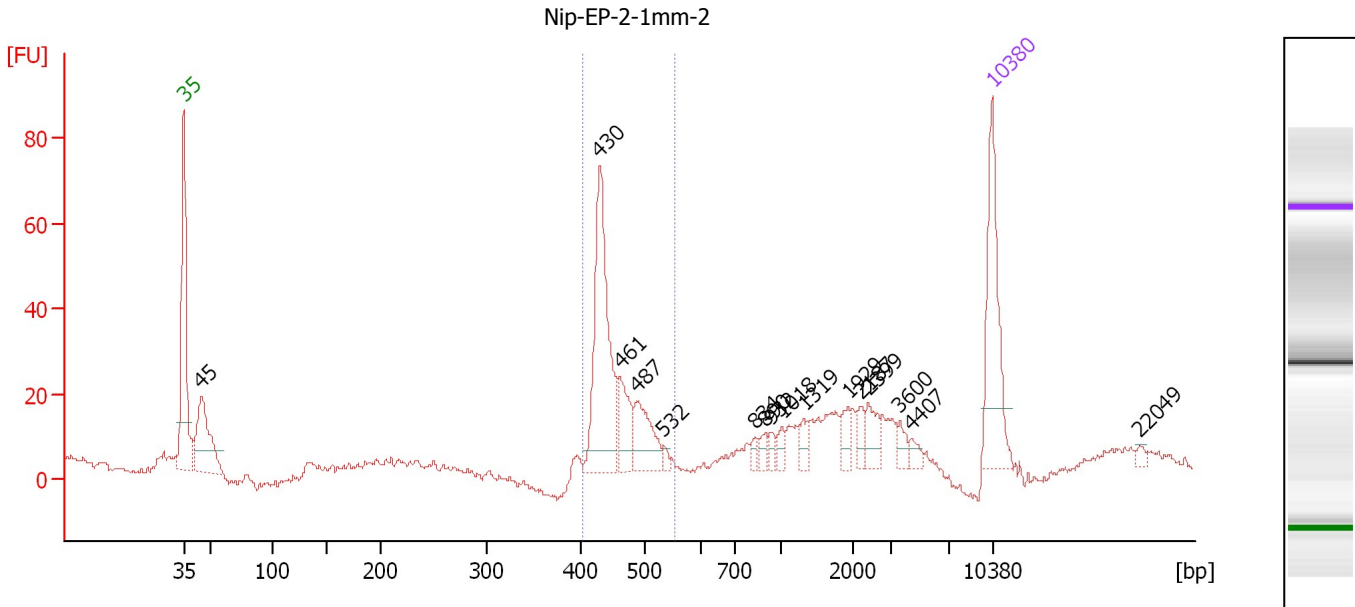
Region table for sample 3 : Nip-EP-2-1mm-1

From [bp]	To [bp]	Average Size [bp]	Molarity [pmol/l]	Conc. [pg/μl]	Corr. Area	% of Total	Size distribution in CV [%]	Color
400	556	455	907.2	271.93	199.1	37	6.6	Blue

Assay Class: High Sensitivity DNA Assay
 Data Path: C:\...ents and Settings\Bioanalyzer\2012-08-13\2012-08-13_001.xad

Created: 8/13/2012 9:11:18 AM
 Modified: 8/13/2012 9:53:40 AM

Electropherogram Summary Continued ...



Overall Results for sample 4 : Nip-EP-2-1mm-2

Number of peaks found: 16 Corr. Area 1: 182.9
 Noise: 0.5

Peak table for sample 4 : Nip-EP-2-1mm-2

Peak	Size [bp]	Conc. [pg/μl]	Molarity [pmol/l]	Observations
1	35	125.00	5,411.3	Lower Marker
2	45	100.97	3,384.3	
3	430	161.84	570.5	
4	461	38.94	128.0	
5	487	46.19	143.7	
6	532	4.84	13.8	
7	834	5.24	9.5	
8	890	7.20	12.3	
9	932	6.40	10.4	
10	1,018	8.18	12.2	
11	1,319	9.33	10.7	
12	1,929	10.88	8.6	
13	2,187	9.26	6.4	
14	2,399	16.52	10.4	
15	3,600	8.44	3.6	
16	4,407	6.87	2.4	
17	10,380	75.00	10.9	Upper Marker
18	22,049	0.00	0.0	

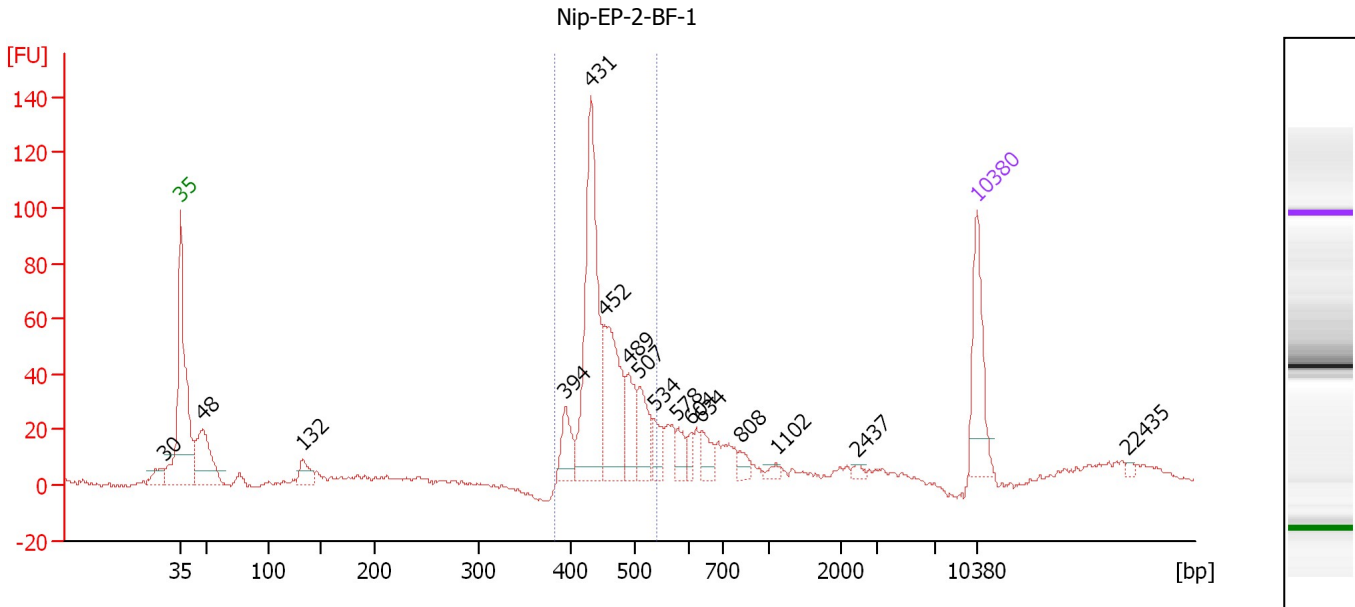
Region table for sample 4 : Nip-EP-2-1mm-2

From [bp]	To [bp]	Average Size [bp]	Molarity [pmol/l]	Conc. [pg/μl]	Corr. Area	% of Total	Size distribution in CV [%]	Color
405	553	453	764.1	227.71	182.9	46	6.5	Blue

Assay Class: High Sensitivity DNA Assay
 Data Path: C:\...ents and Settings\Bioanalyzer\2012-08-13\2012-08-13_001.xad

Created: 8/13/2012 9:11:18 AM
 Modified: 8/13/2012 9:53:40 AM

Electropherogram Summary Continued ...



Overall Results for sample 5 : Nip-EP-2-BF-1

Number of peaks found: 16 Corr. Area 1: 490.5
 Noise: 0.7

Peak table for sample 5 : Nip-EP-2-BF-1

Peak	Size [bp]	Conc. [pg/μl]	Molarity [pmol/l]	Observations
1	30	0.00	0.0	
2	35	125.00	5,411.3	Lower Marker
3	48	128.84	4,078.5	
4	132	30.00	343.3	
5	394	45.25	174.1	
6	431	268.67	944.7	
7	452	144.50	484.7	
8	489	53.23	164.9	
9	507	54.27	162.3	
10	534	24.25	68.8	
11	578	21.47	56.3	
12	604	13.92	34.9	
13	634	24.63	58.9	
14	808	12.94	24.3	
15	1,102	6.50	8.9	
16	2,437	5.11	3.2	
17	10,380	75.00	10.9	Upper Marker
18	22,435	0.00	0.0	

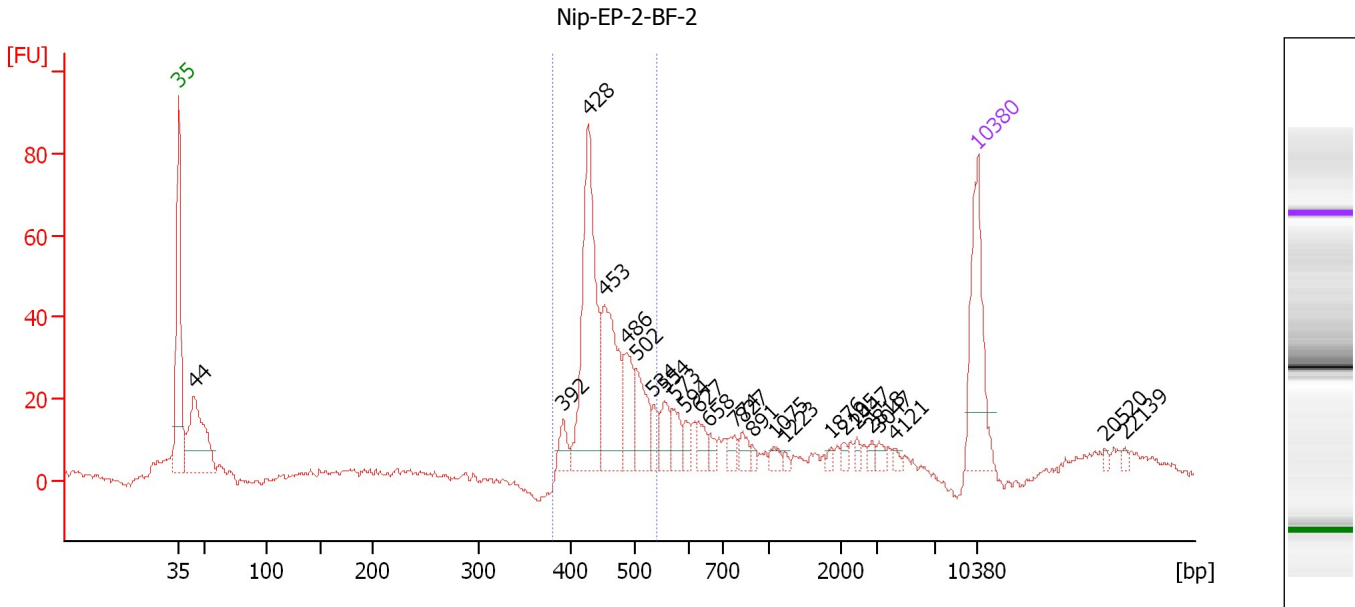
Region table for sample 5 : Nip-EP-2-BF-1

From [bp]	To [bp]	Average Size [bp]	Molarity [pmol/l]	Conc. [pg/μl]	Corr. Area	% of Total	Size distribution in CV [%]	Color
382	538	454	1,953.2	581.63	490.5	58	7.8	Blue

Assay Class: High Sensitivity DNA Assay
 Data Path: C:\...ents and Settings\Bioanalyzer\2012-08-13\2012-08-13_001.xad

Created: 8/13/2012 9:11:18 AM
 Modified: 8/13/2012 9:53:40 AM

Electropherogram Summary Continued ...



Overall Results for sample 6 : Nip-EP-2-BF-2

Number of peaks found: 25 Corr. Area 1: 332.6
 Noise: 0.9

Peak table for sample 6 : Nip-EP-2-BF-2

Peak	Size [bp]	Conc. [pg/μl]	Molarity [pmol/l]	Observations
1	35	125.00	5,411.3	Lower Marker
2	44	135.47	4,657.7	
3	392	17.94	69.3	
4	428	187.23	662.9	
5	453	107.96	361.3	
6	486	45.37	141.5	
7	502	48.73	147.1	
8	534	14.92	42.3	
9	554	23.46	64.2	
10	573	19.35	51.2	
11	594	10.71	27.3	
12	627	15.39	37.2	
13	658	7.55	17.4	
14	774	9.56	18.7	
15	827	10.77	19.7	
16	891	4.08	6.9	
17	1,075	7.02	9.9	
18	1,223	3.02	3.7	
19	1,876	3.40	2.7	
20	2,105	4.33	3.1	
21	2,447	4.46	2.8	
22	2,818	4.10	2.2	
23	3,047	5.52	2.7	
24	4,121	3.57	1.3	
25	10,380	75.00	10.9	Upper Marker
26	20,520	0.00	0.0	

Assay Class: High Sensitivity DNA Assay
Data Path: C:\...ents and Settings\Bioanalyzer\2012-08-13\2012-08-13_001.xad

Created: 8/13/2012 9:11:18 AM
Modified: 8/13/2012 9:53:40 AM

Electropherogram Summary Continued ...**... Peak table for sample 6 : Nip-EP-2-BF-2**

Peak	Size [bp]	Conc. [pg/ μ l]	Molarity [pmol/l]	Observations
27	22,139	0.00	0.0	

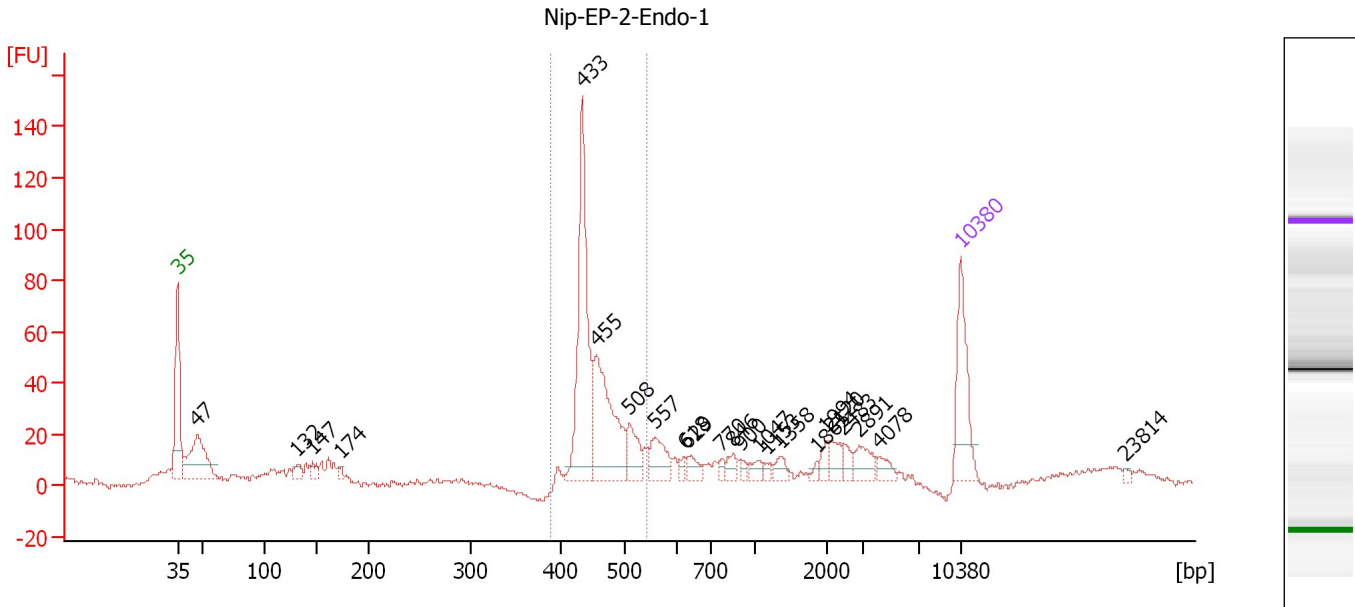
Region table for sample 6 : Nip-EP-2-BF-2

From [bp]	To [bp]	Average Size [bp]	Molarity [pmol/l]	Conc. [pg/ μ l]	Corr. Area	% of Total	Size distribution in CV [%]	Color
381	539	456	1,400.4	418.96	332.6	53	7.8	

Assay Class: High Sensitivity DNA Assay
 Data Path: C:\...ents and Settings\Bioanalyzer\2012-08-13\2012-08-13_001.xad

Created: 8/13/2012 9:11:18 AM
 Modified: 8/13/2012 9:53:40 AM

Electropherogram Summary Continued ...



Overall Results for sample 7 : Nip-EP-2-Endo-1

Number of peaks found: 23 Corr. Area 1: 348.5
 Noise: 1.0

Peak table for sample 7 : Nip-EP-2-Endo-1

Peak	Size [bp]	Conc. [pg/μl]	Molarity [pmol/l]	Observations
1	35	125.00	5,411.3	Lower Marker
2	47	133.26	4,313.8	
3	132	15.56	178.1	
4	147	15.65	161.7	
5	174	7.05	61.5	
6	433	237.17	829.2	
7	455	164.44	547.2	
8	508	42.88	127.9	
9	557	42.48	115.5	
10	618	7.41	18.2	
11	629	15.69	37.8	
12	770	6.76	13.3	
13	846	12.01	21.5	
14	900	5.95	10.0	
15	1,047	10.75	15.6	
16	1,153	4.84	6.4	
17	1,358	11.76	13.1	
18	1,865	4.51	3.7	
19	1,994	10.74	8.2	
20	2,120	18.42	13.2	
21	2,483	11.14	6.8	
22	2,891	24.26	12.7	
23	4,078	12.07	4.5	
24	10,380	75.00	10.9	Upper Marker
25	23,814	0.00	0.0	

Assay Class: High Sensitivity DNA Assay
Data Path: C:\...ents and Settings\Bioanalyzer\2012-08-13\2012-08-13_001.xad

Created: 8/13/2012 9:11:18 AM
Modified: 8/13/2012 9:53:40 AM

Electropherogram Summary Continued ...

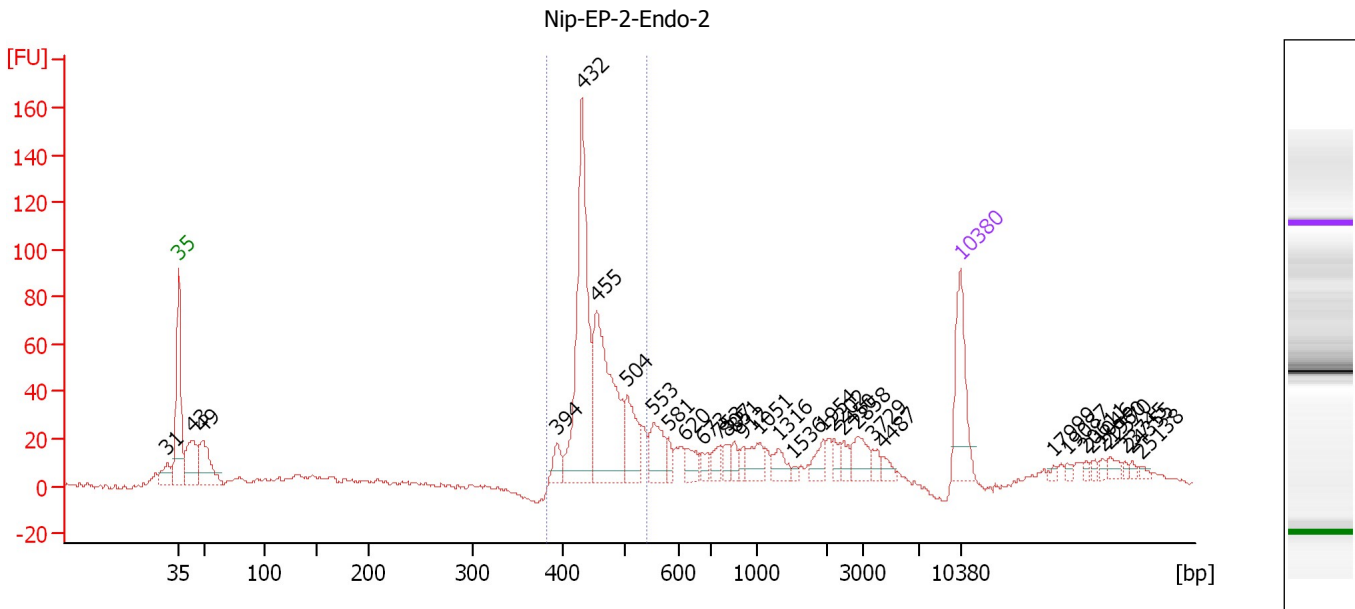
... Region table for sample 7 : Nip-EP-2-Endo-1

From [bp]	To [bp]	Average Size [bp]	Molarity [pmol/l]	Conc. [pg/μl]	Corr. Area	% of Total	Size distribution in CV [%]	Color
388	541	457	1,538.1	462.00	348.5	44	6.8	■

Assay Class: High Sensitivity DNA Assay
 Data Path: C:\...ents and Settings\Bioanalyzer\2012-08-13\2012-08-13_001.xad

Created: 8/13/2012 9:11:18 AM
 Modified: 8/13/2012 9:53:40 AM

Electropherogram Summary Continued ...



Overall Results for sample 8 : Nip-EP-2-Endo-2

Number of peaks found: 33 Corr. Area 1: 511.0
 Noise: 0.7

Peak table for sample 8 : Nip-EP-2-Endo-2

Peak	Size [bp]	Conc. [pg/μl]	Molarity [pmol/l]	Observations
1	31	0.00	0.0	
2	35	125.00	5,411.3	Lower Marker
3	43	91.55	3,202.8	
4	49	97.13	2,980.5	
5	394	24.04	92.4	
6	432	292.87	1,027.9	
7	455	233.84	779.5	
8	504	69.63	209.2	
9	553	50.08	137.3	
10	581	14.02	36.6	
11	620	23.51	57.4	
12	673	12.23	27.6	
13	753	16.51	33.2	
14	807	12.21	22.9	
15	851	13.54	24.1	
16	912	10.46	17.4	
17	1,051	26.92	38.8	
18	1,316	19.90	22.9	
19	1,536	3.89	3.8	
20	1,954	18.02	14.0	
21	2,202	11.91	8.2	
22	2,450	11.72	7.2	
23	2,858	28.11	14.9	
24	3,729	10.62	4.3	
25	4,487	9.39	3.2	
26	10,380	75.00	10.9	Upper Marker


Assay Class: High Sensitivity DNA Assay
Data Path: C:\...ents and Settings\Bioanalyzer\2012-08-13\2012-08-13_001.xad

Created: 8/13/2012 9:11:18 AM
Modified: 8/13/2012 9:53:40 AM

Electropherogram Summary Continued ...**... Peak table for sample 8 : Nip-EP-2-Endo-2**

Peak	Size [bp]	Conc. [pg/μl]	Molarity [pmol/l]	Observations
27	17,999	0.00	0.0	
28	19,087	0.00	0.0	
29	20,611	0.00	0.0	
30	21,046	0.00	0.0	
31	21,960	0.00	0.0	
32	22,570	0.00	0.0	
33	23,745	0.00	0.0	
34	24,355	0.00	0.0	
35	25,138	0.00	0.0	

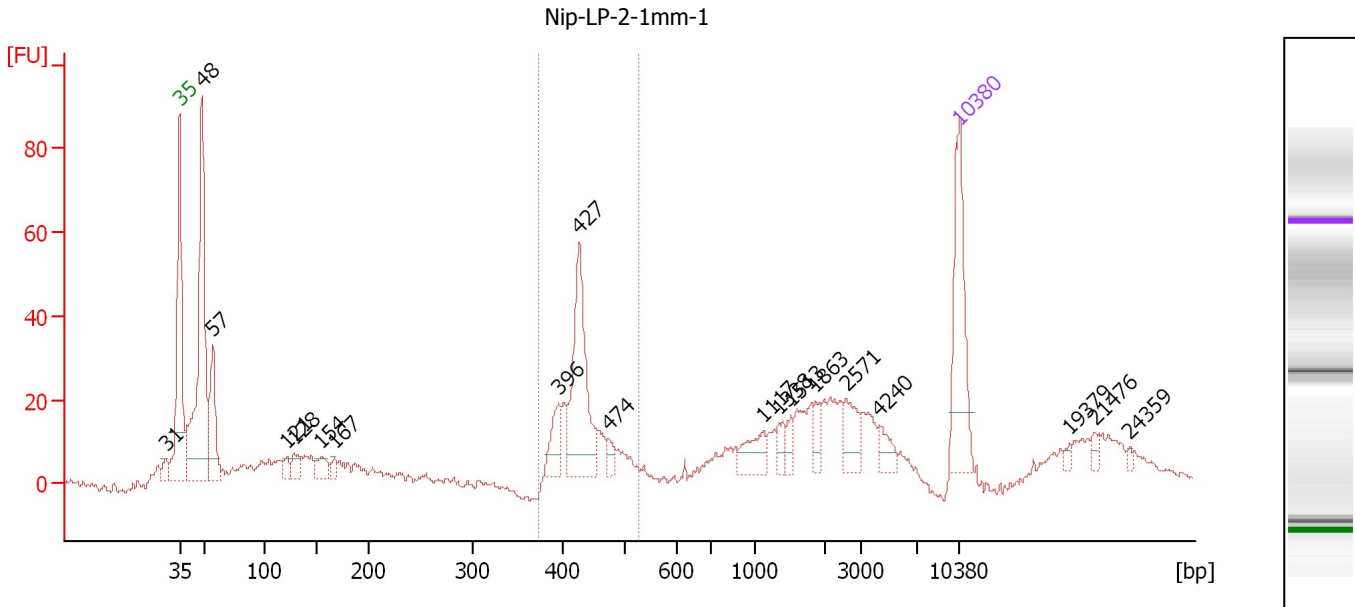
Region table for sample 8 : Nip-EP-2-Endo-2

From [bp]	To [bp]	Average Size [bp]	Molarity [pmol/l]	Conc. [pg/μl]	Corr. Area	% of Total	Size distribution in CV [%]	Color
383	540	456	2,146.7	643.21	511.0	44	7.5	

Assay Class: High Sensitivity DNA Assay
 Data Path: C:\...ents and Settings\Bioanalyzer\2012-08-13\2012-08-13_001.xad

Created: 8/13/2012 9:11:18 AM
 Modified: 8/13/2012 9:53:40 AM

Electropherogram Summary Continued ...



Overall Results for sample 9 : Nip-LP-2-1mm-1

Number of peaks found: 19 Corr. Area 1: 171.8
 Noise: 0.7

Peak table for sample 9 : Nip-LP-2-1mm-1

Peak	Size [bp]	Conc. [pg/μl]	Molarity [pmol/l]	Observations
1	31	0.00	0.0	
2	35	125.00	5,411.3	Lower Marker
3	48	294.86	9,217.9	
4	57	83.97	2,245.5	
5	121	12.32	154.8	
6	128	17.91	212.4	
7	154	18.12	178.3	
8	167	8.42	76.4	
9	396	31.12	118.9	
10	427	124.96	443.3	
11	474	10.48	33.5	
12	1,117	24.22	32.9	
13	1,338	11.13	12.6	
14	1,513	9.17	9.2	
15	1,863	12.12	9.9	
16	2,571	23.51	13.9	
17	4,240	13.52	4.8	
18	10,380	75.00	10.9	Upper Marker
19	19,379	0.00	0.0	
20	21,476	0.00	0.0	
21	24,359	0.00	0.0	

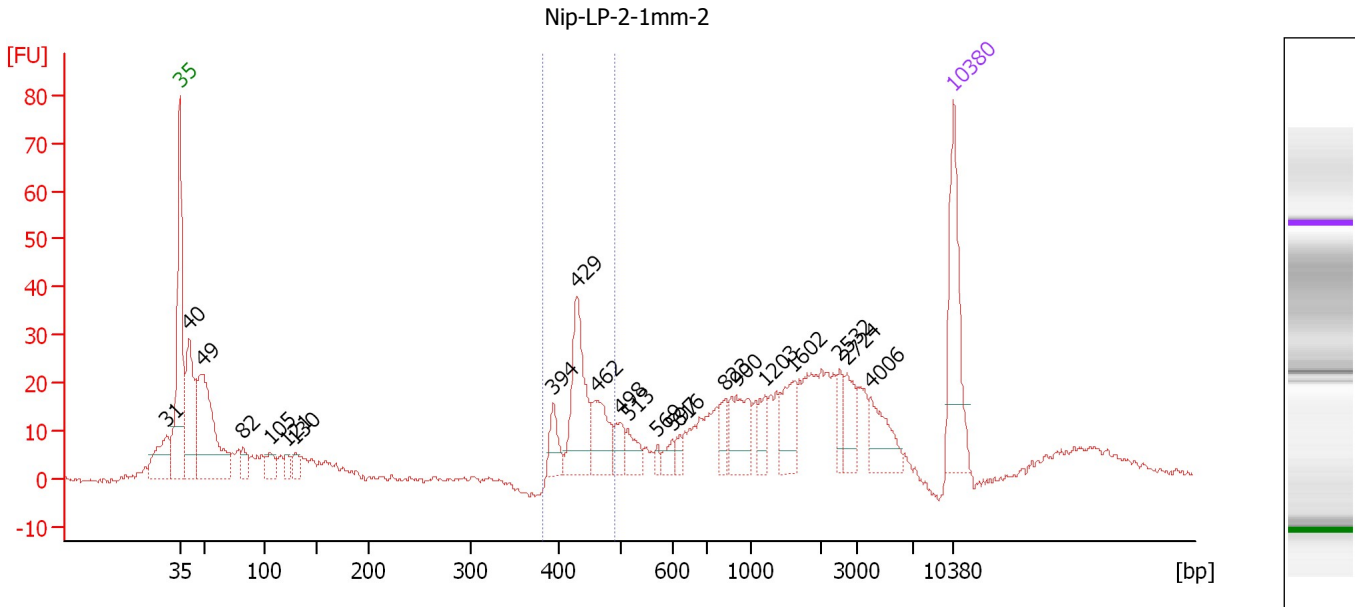
Region table for sample 9 : Nip-LP-2-1mm-1

From [bp]	To [bp]	Average Size [bp]	Molarity [pmol/l]	Conc. [pg/μl]	Corr. Area	% of Total	Size distribution in CV [%]	Color
375	526	433	787.9	224.38	171.8	21	7.1	Blue

Assay Class: High Sensitivity DNA Assay
 Data Path: C:\...ents and Settings\Bioanalyzer\2012-08-13\2012-08-13_001.xad

Created: 8/13/2012 9:11:18 AM
 Modified: 8/13/2012 9:53:40 AM

Electropherogram Summary Continued ...



Overall Results for sample 10 : Nip-LP-2-1mm-2

Number of peaks found: 22 Corr. Area 1: 119.0
 Noise: 0.6

Peak table for sample 10 : Nip-LP-2-1mm-2

Peak	Size [bp]	Conc. [pg/μl]	Molarity [pmol/l]	Observations
1	31	0.00	0.0	
2	35	125.00	5,411.3	Lower Marker
3	40	128.23	4,798.3	
4	49	194.90	6,080.2	
5	82	20.17	372.7	
6	105	20.96	303.2	
7	121	12.07	150.7	
8	130	14.21	166.1	
9	394	26.07	100.4	
10	429	93.93	332.1	
11	462	51.57	169.2	
12	498	19.99	60.9	
13	513	21.16	62.5	
14	569	5.35	14.3	
15	597	10.59	26.9	
16	616	8.18	20.1	
17	823	17.01	31.3	
18	900	44.91	75.6	
19	1,203	19.93	25.1	
20	1,602	34.20	32.3	
21	2,532	15.22	9.1	
22	2,724	23.99	13.3	
23	4,006	33.54	12.7	
24	10,380	75.00	10.9	Upper Marker

Assay Class: High Sensitivity DNA Assay
Data Path: C:\...ents and Settings\Bioanalyzer\2012-08-13\2012-08-13_001.xad

Created: 8/13/2012 9:11:18 AM
Modified: 8/13/2012 9:53:40 AM

Electropherogram Summary Continued ...

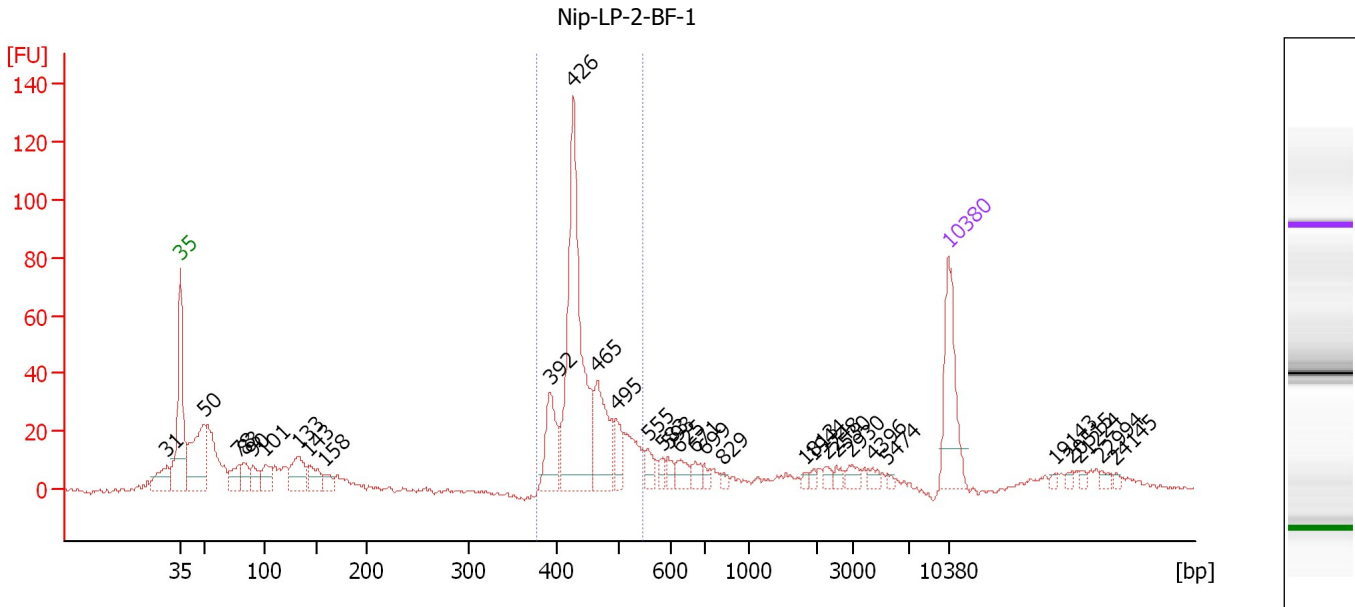
... Region table for sample 10 : Nip-LP-2-1mm-2

From [bp]	To [bp]	Average Size [bp]	Molarity [pmol/l]	Conc. [pg/μl]	Corr. Area	% of Total	Size distribution in CV [%]	Color
382	490	438	606.8	174.97	119.0	15	5.9	■

Assay Class: High Sensitivity DNA Assay
 Data Path: C:\...ents and Settings\Bioanalyzer\2012-08-13\2012-08-13_001.xad

Created: 8/13/2012 9:11:18 AM
 Modified: 8/13/2012 9:53:40 AM

Electropherogram Summary Continued ...



Overall Results for sample 11 : Nip-LP-2-BF-1

Number of peaks found: 32 Corr. Area 1: 419.7
 Noise: 1.0

Peak table for sample 11 : Nip-LP-2-BF-1

Peak	Size [bp]	Conc. [pg/μl]	Molarity [pmol/l]	Observations
1	31	0.00	0.0	
2	35	125.00	5,411.3	Lower Marker
3	50	139.42	4,257.5	
4	78	32.29	624.9	
5	83	26.97	494.0	
6	90	26.56	448.1	
7	101	31.09	468.4	
8	133	54.24	618.5	
9	143	31.92	338.7	
10	158	14.81	141.6	
11	392	64.48	249.0	
12	426	302.88	1,077.2	
13	465	89.07	290.4	
14	495	30.53	93.5	
15	555	15.64	42.7	
16	583	9.15	23.8	
17	593	11.27	28.8	
18	625	18.17	44.1	
19	671	12.26	27.7	
20	699	7.10	15.4	
21	829	5.14	9.4	
22	1,813	3.60	3.0	
23	1,944	4.19	3.3	
24	2,248	6.58	4.4	
25	2,530	6.30	3.8	
26	2,930	10.07	5.2	

Assay Class: High Sensitivity DNA Assay
 Data Path: C:\...ents and Settings\Bioanalyzer\2012-08-13\2012-08-13_001.xad

Created: 8/13/2012 9:11:18 AM
 Modified: 8/13/2012 9:53:40 AM

Electropherogram Summary Continued ...

... Peak table for sample 11 : Nip-LP-2-BF-1

Peak	Size [bp]	Conc. [pg/μl]	Molarity [pmol/l]	Observations
27	4,396	6.93	2.4	
28	5,474	3.64	1.0	
29	10,380	75.00	10.9	Upper Marker
30	19,143	0.00	0.0	
31	20,515	0.00	0.0	
32	21,224	0.00	0.0	
33	22,994	0.00	0.0	
34	24,145	0.00	0.0	

Region table for sample 11 : Nip-LP-2-BF-1

From [bp]	To [bp]	Average Size [bp]	Molarity [pmol/l]	Conc. [pg/μl]	Corr. Area	% of Total	Size distribution in CV [%]	Color
378	546	446	1,831.3	534.85	419.7	43	8.6	

Assay Class: High Sensitivity DNA Assay
Data Path: C:\...ents and Settings\Bioanalyzer\2012-08-13\2012-08-13_001.xad

Created: 8/13/2012 9:11:18 AM
Modified: 8/13/2012 9:53:40 AM

Gel Image

