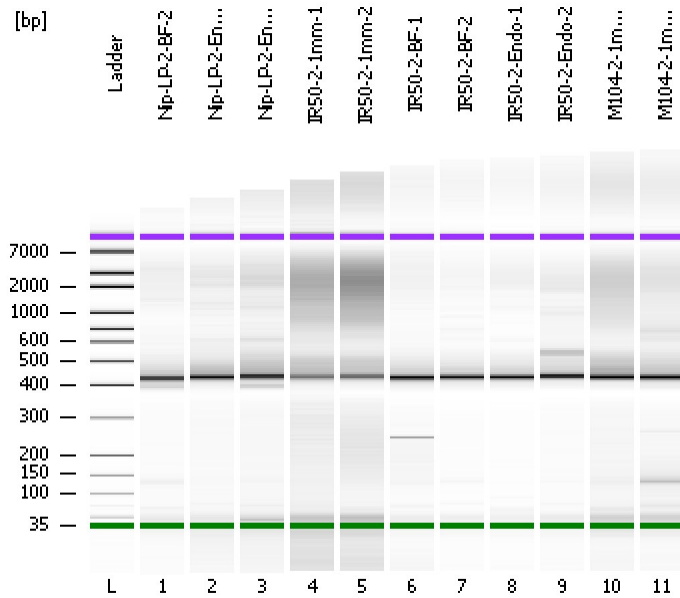


Assay Class: High Sensitivity DNA Assay  
Data Path: C:\...ents and Settings\Bioanalyzer\2012-08-13\2012-08-13\_002.xad

Created: 8/13/2012 9:55:31 AM  
Modified: 8/13/2012 10:37:35 AM

### Electrophoresis File Run Summary



#### Instrument Information:

Instrument Name: DE13701086      Firmware: C.01.069  
Serial#: DE13701086      Type: G2938B

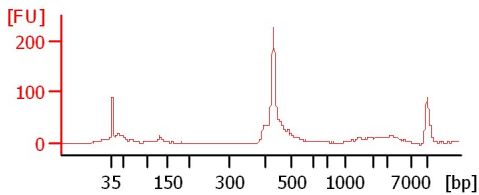
#### Assay Information:

Assay Origin Path: C:\Program Files\Agilent\2100 bioanalyzer\2100 expert\assays\dsDNA\High Sensitivity DNA.xsy  
Assay Class: High Sensitivity DNA Assay  
Version: 1.03  
Assay Comments: Copyright © 2003-2010 Agilent Technologies

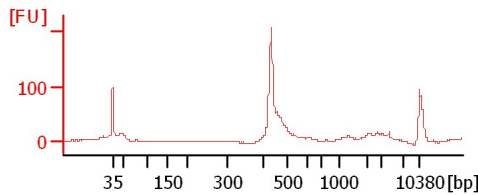
#### Chip Information:

Chip Lot #:      Reagent Kit Lot #:      Chip Comments:

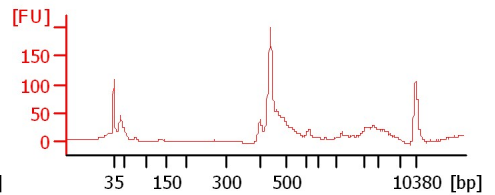
Nip-LP-2-BF-2



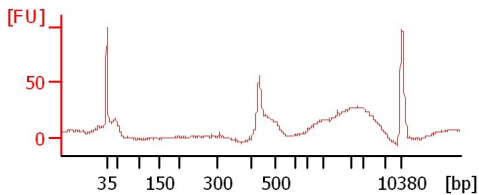
Nip-LP-2-Endo-1



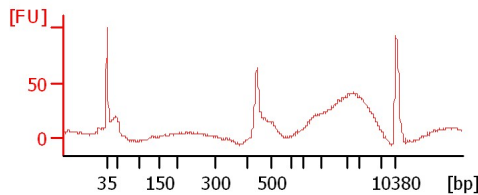
Nip-LP-2-Endo-2



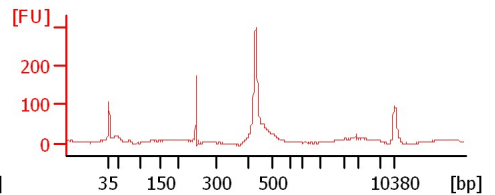
IR50-2-1mm-1



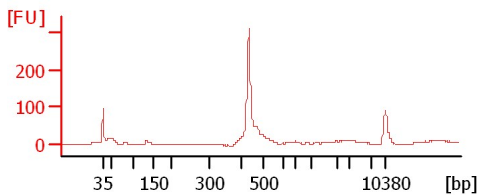
IR50-2-1mm-2



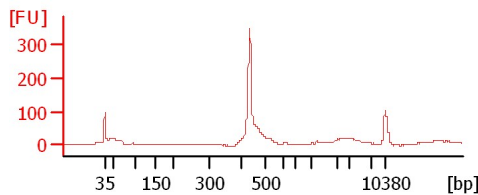
IR50-2-BF-1



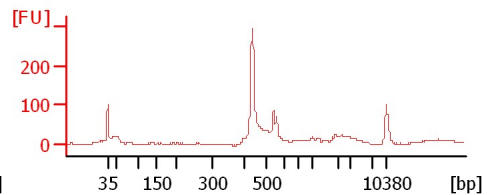
IR50-2-BF-2



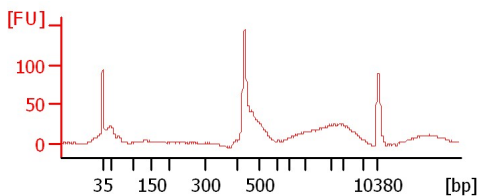
IR50-2-Endo-1



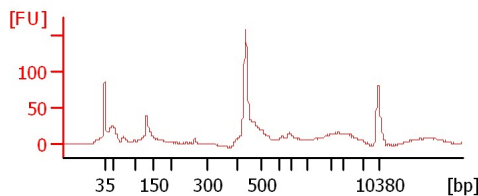
IR50-2-Endo-2



M104-2-1mm-1



M104-2-1mm-2



Assay Class: High Sensitivity DNA Assay  
 Data Path: C:\...ents and Settings\Bioanalyzer\2012-08-13\2012-08-13\_002.xad

Created: 8/13/2012 9:55:31 AM  
 Modified: 8/13/2012 10:37:35 AM

**Electrophoresis File Run Summary (Chip Summary)**

Sample Name	Sample Comment	Rest. Digest	Status	Observation	Result Label	Result Color
Nip-LP-2-BF-2		<input type="checkbox"/>	✓			
Nip-LP-2-Endo-1		<input type="checkbox"/>	✓			
Nip-LP-2-Endo-2		<input type="checkbox"/>	✓			
IR50-2-1mm-1		<input type="checkbox"/>	✓			
IR50-2-1mm-2		<input type="checkbox"/>	✓			
IR50-2-BF-1		<input type="checkbox"/>	✓			
IR50-2-BF-2		<input type="checkbox"/>	✓			
IR50-2-Endo-1		<input type="checkbox"/>	✓			
IR50-2-Endo-2		<input type="checkbox"/>	✓			
M104-2-1mm-1		<input type="checkbox"/>	✓			
M104-2-1mm-2		<input type="checkbox"/>	✓			
Ladder		<input type="checkbox"/>	✓			

**Chip Lot #**

**Reagent Kit Lot #**

**Chip Comments :**

Assay Class: High Sensitivity DNA Assay  
Data Path: C:\...ents and Settings\Bioanalyzer\2012-08-13\2012-08-13\_002.xad

Created: 8/13/2012 9:55:31 AM  
Modified: 8/13/2012 10:37:35 AM

**Electrophoresis Assay Details**

**General Analysis Settings**

Number of Available Sample and Ladder Wells (Max.) : 12  
Minimum Visible Range [s] : 32  
Maximum Visible Range [s] : 138  
Start Analysis Time Range [s] : 33  
End Analysis Time Range [s] : 137.5  
Ladder Concentration [pg/ $\mu$ l] : 1950  
Uses Standard Area for Ladder Fragments  
Lower Marker Concentration [pg/ $\mu$ l] : 125  
Upper Marker Concentration [pg/ $\mu$ l] : 75  
Used Upper Marker for Quantitation  
Standard Curve Fit is Point to Point  
Show Data Aligned to Lower and Upper Marker

**Integrator Settings**

Integration Start Time [s] : 33.05  
Integration End Time [s] : 137  
Slope Threshold : 0.8  
Height Threshold [FU] : 5  
Area Threshold : 0.1  
Width Threshold [s] : 0.6  
Baseline Plateau [s] : 0.5

**Filter Settings**

Filter Width [s] : 0.5  
Polynomial Order : 4

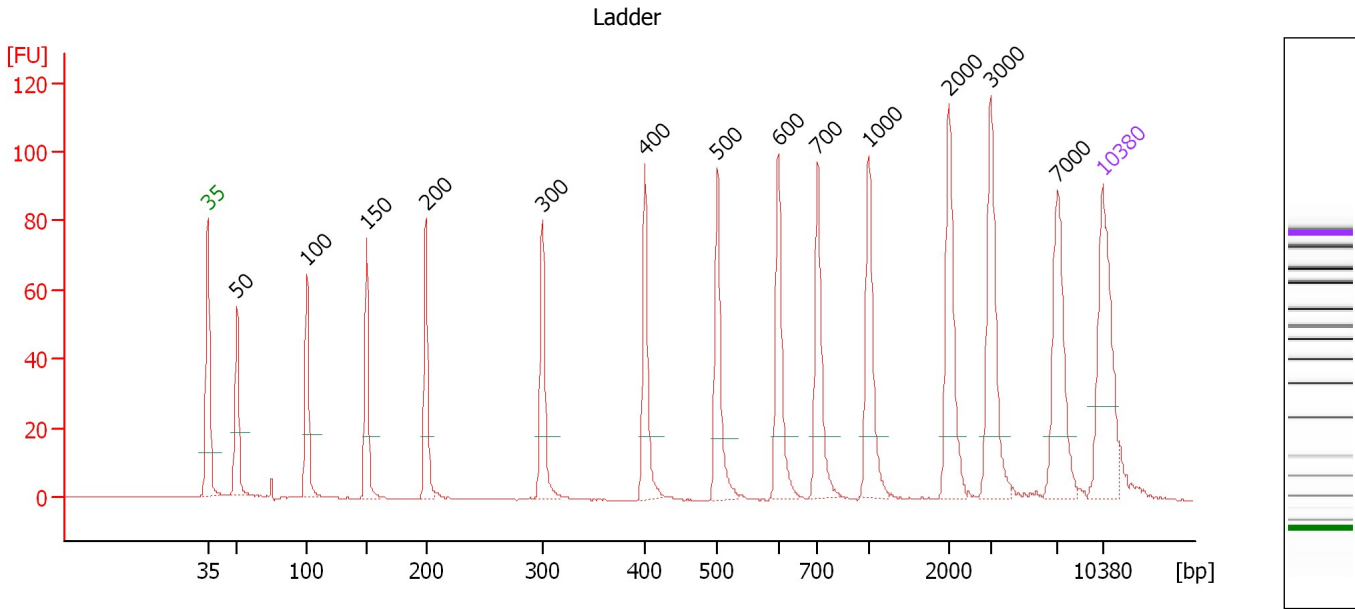
**Ladder**

Ladder Peak	Size	Area
1	35	160
2	50	210
3	100	208
4	150	221
5	200	242
6	300	270
7	400	305
8	500	306
9	600	336
10	700	321
11	1000	366
12	2000	413
13	3000	411
14	7000	400
15	10380	214

Assay Class: High Sensitivity DNA Assay  
 Data Path: C:\...ents and Settings\Bioanalyzer\2012-08-13\2012-08-13\_002.xad

Created: 8/13/2012 9:55:31 AM  
 Modified: 8/13/2012 10:37:35 AM

**Electropherogram Summary**



**Overall Results for Ladder**

Noise: 0.2

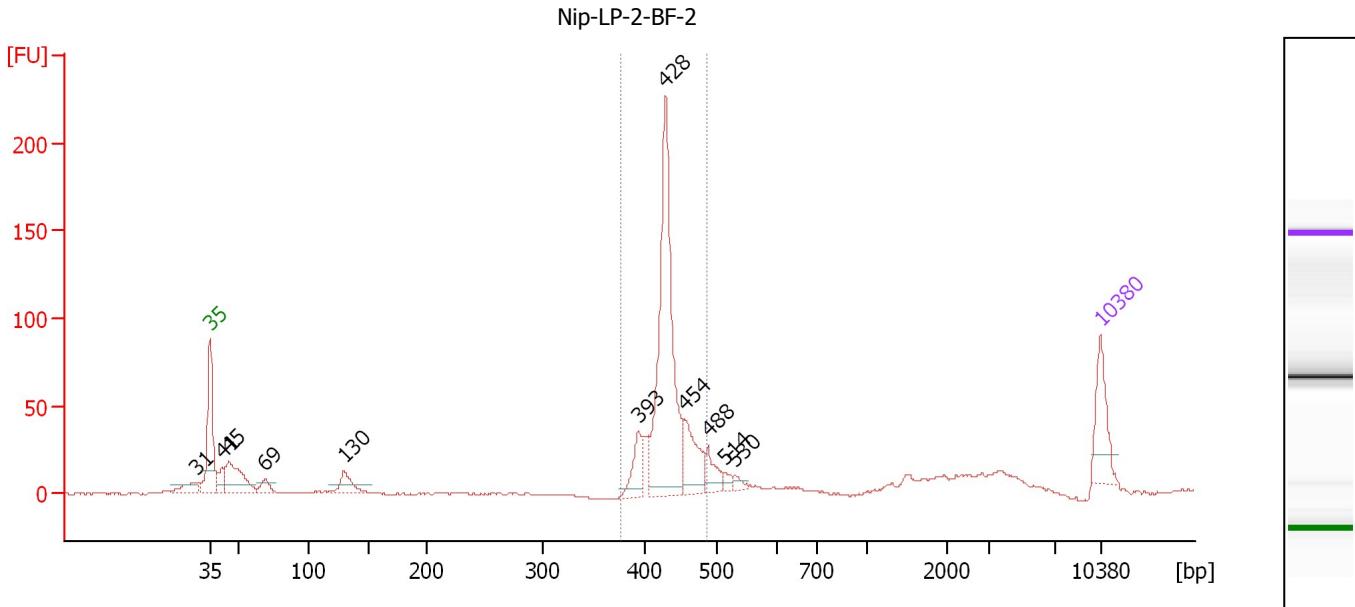
**Peak table for Ladder**

Peak	Size [bp]	Conc. [pg/μl]	Molarity [pmol/l]	Observations
1	35	125.00	5,411.3	Lower Marker
2	50	150.00	4,545.5	Ladder Peak
3	100	150.00	2,272.7	Ladder Peak
4	150	150.00	1,515.2	Ladder Peak
5	200	150.00	1,136.4	Ladder Peak
6	300	150.00	757.6	Ladder Peak
7	400	150.00	568.2	Ladder Peak
8	500	150.00	454.5	Ladder Peak
9	600	150.00	378.8	Ladder Peak
10	700	150.00	324.7	Ladder Peak
11	1,000	150.00	227.3	Ladder Peak
12	2,000	150.00	113.6	Ladder Peak
13	3,000	150.00	75.8	Ladder Peak
14	7,000	150.00	32.5	Ladder Peak
15	10,380	75.00	10.9	Upper Marker

Assay Class: High Sensitivity DNA Assay  
 Data Path: C:\...ents and Settings\Bioanalyzer\2012-08-13\2012-08-13\_002.xad

Created: 8/13/2012 9:55:31 AM  
 Modified: 8/13/2012 10:37:35 AM

**Electropherogram Summary Continued ...**



**Overall Results for sample 1 : Nip-LP-2-BF-2**

Number of peaks found: 11                      Corr. Area 1: 476.1  
 Noise: 0.2

**Peak table for sample 1 : Nip-LP-2-BF-2**

Peak	Size [bp]	Conc. [pg/μl]	Molarity [pmol/l]	Observations
1	31	0.00	0.0	
2	35	125.00	5,411.3	Lower Marker
3	41	41.01	1,504.2	
4	45	139.23	4,701.4	
5	69	28.26	624.7	
6	130	54.07	632.0	
7	393	65.12	250.8	
8	428	498.54	1,763.3	
9	454	99.17	330.8	
10	488	41.18	128.0	
11	514	11.36	33.5	
12	530	12.05	34.5	
13	10,380	75.00	10.9	Upper Marker

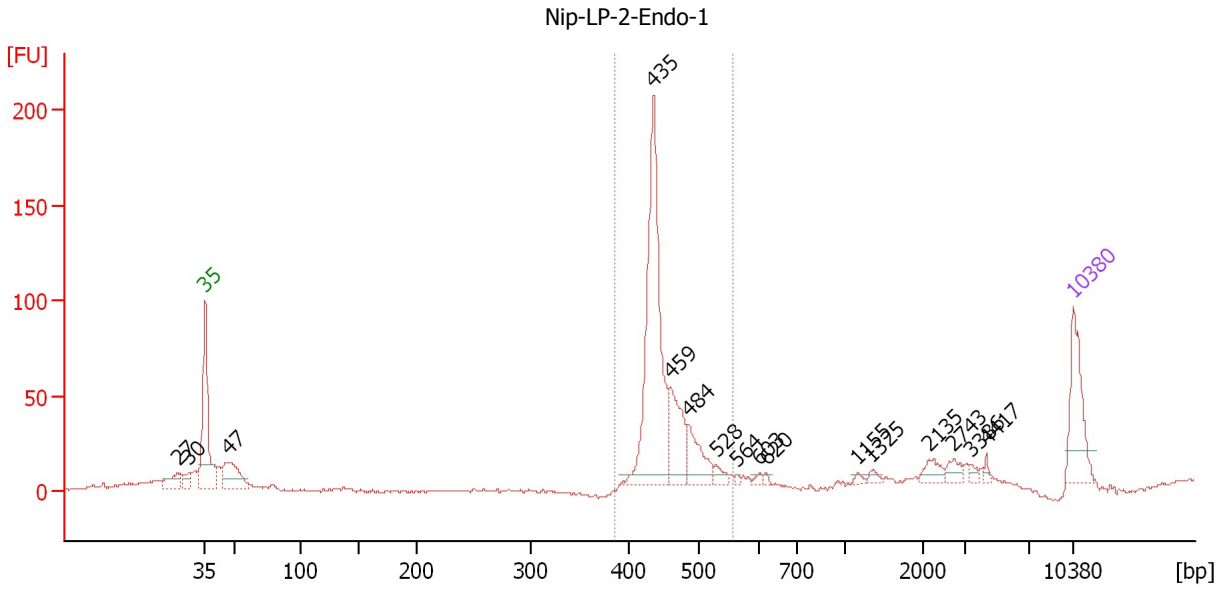
**Region table for sample 1 : Nip-LP-2-BF-2**

From [bp]	To [bp]	Average Size [bp]	Molarity [pmol/l]	Conc. [pg/μl]	Corr. Area	% of Total	Size distribution in CV [%]	Color
377	486	431	2,364.9	671.94	476.1	60	4.9	Blue

Assay Class: High Sensitivity DNA Assay  
 Data Path: C:\...ents and Settings\Bioanalyzer\2012-08-13\2012-08-13\_002.xad

Created: 8/13/2012 9:55:31 AM  
 Modified: 8/13/2012 10:37:35 AM

**Electropherogram Summary Continued ...**



**Overall Results for sample 2 : Nip-LP-2-Endo-1**

Number of peaks found: 16                      Corr. Area 1: 470.4  
 Noise: 0.5

**Peak table for sample 2 : Nip-LP-2-Endo-1**

Peak	Size [bp]	Conc. [pg/μl]	Molarity [pmol/l]	Observations
1	27	0.00	0.0	
2	30	0.00	0.0	
3	35	125.00	5,411.3	Lower Marker
4	47	90.61	2,897.9	
5	435	389.63	1,357.7	
6	459	98.48	325.0	
7	484	66.89	209.4	
8	528	13.45	38.6	
9	564	3.58	9.6	
10	603	5.25	13.2	
11	620	3.71	9.1	
12	1,155	4.75	6.2	
13	1,325	6.50	7.4	
14	2,135	17.62	12.5	
15	2,743	13.39	7.4	
16	3,386	5.72	2.6	
17	4,417	4.79	1.6	
18	10,380	75.00	10.9	Upper Marker

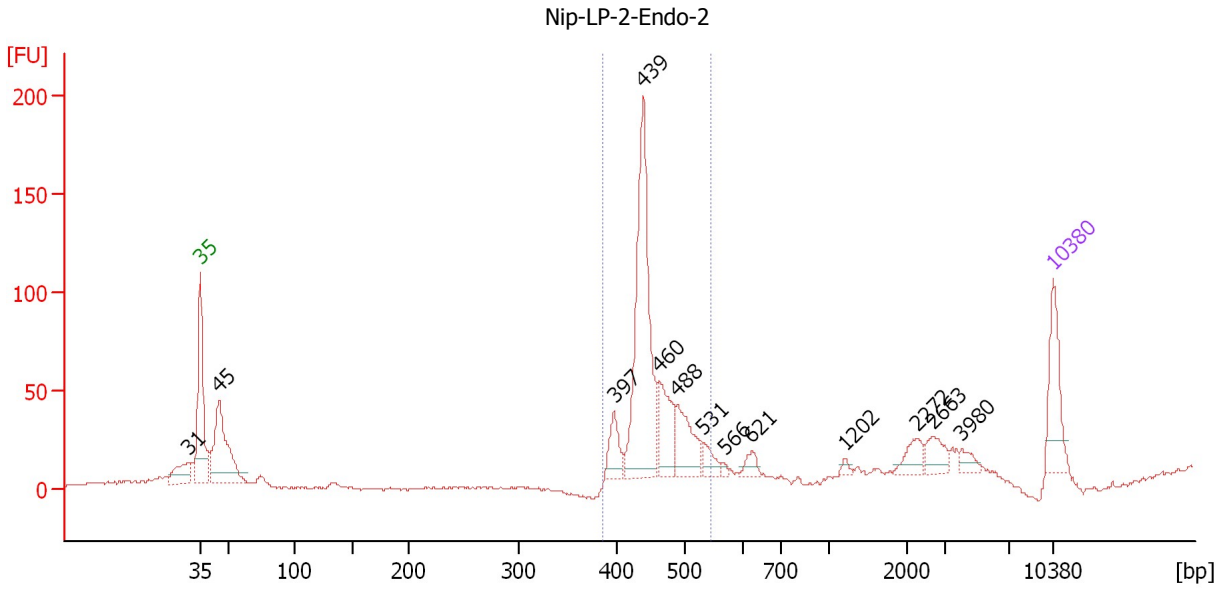
**Region table for sample 2 : Nip-LP-2-Endo-1**

From [bp]	To [bp]	Average Size [bp]	Molarity [pmol/l]	Conc. [pg/μl]	Corr. Area	% of Total	Size distribution in CV [%]	Color
386	558	451	1,909.5	566.57	470.4	66	6.4	Blue

Assay Class: High Sensitivity DNA Assay  
 Data Path: C:\...ents and Settings\Bioanalyzer\2012-08-13\2012-08-13\_002.xad

Created: 8/13/2012 9:55:31 AM  
 Modified: 8/13/2012 10:37:35 AM

**Electropherogram Summary Continued ...**



**Overall Results for sample 3 : Nip-LP-2-Endo-2**

Number of peaks found: 13                      Corr. Area 1: 514.1  
 Noise: 0.7

**Peak table for sample 3 : Nip-LP-2-Endo-2**

Peak	Size [bp]	Conc. [pg/µl]	Molarity [pmol/l]	Observations
1	31	0.00	0.0	
2	35	125.00	5,411.3	Lower Marker
3	45	243.10	8,180.9	
4	397	51.57	196.7	
5	439	386.08	1,333.5	
6	460	96.20	316.7	
7	488	92.02	285.7	
8	531	25.59	73.0	
9	566	6.35	17.0	
10	621	18.22	44.4	
11	1,202	6.34	8.0	
12	2,272	27.61	18.4	
13	2,663	30.33	17.3	
14	3,980	14.36	5.5	
15	10,380	75.00	10.9	Upper Marker

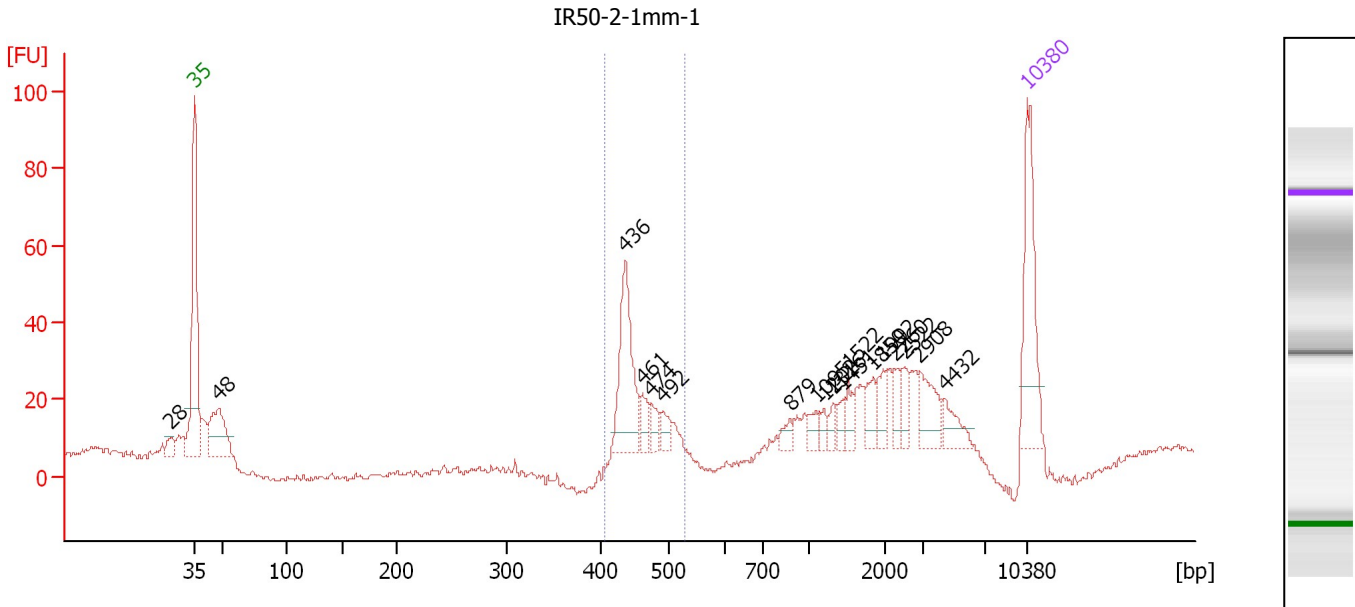
**Region table for sample 3 : Nip-LP-2-Endo-2**

From [bp]	To [bp]	Average Size [bp]	Molarity [pmol/l]	Conc. [pg/µl]	Corr. Area	% of Total	Size distribution in CV [%]	Color
385	542	452	2,149.0	638.34	514.1	61	7.2	Blue

Assay Class: High Sensitivity DNA Assay  
 Data Path: C:\...ents and Settings\Bioanalyzer\2012-08-13\2012-08-13\_002.xad

Created: 8/13/2012 9:55:31 AM  
 Modified: 8/13/2012 10:37:35 AM

**Electropherogram Summary Continued ...**



**Overall Results for sample 4 : IR50-2-1mm-1**

Number of peaks found: 18      Corr. Area 1: 125.9  
 Noise: 0.9

**Peak table for sample 4 : IR50-2-1mm-1**

Peak	Size [bp]	Conc. [pg/μl]	Molarity [pmol/l]	Observations
1	28	0.00	0.0	
2	35	125.00	5,411.3	Lower Marker
3	48	79.86	2,495.5	
4	436	101.66	353.5	
5	461	17.57	57.7	
6	474	13.57	43.4	
7	492	15.06	46.4	
8	879	9.36	16.1	
9	1,095	10.75	14.9	
10	1,202	7.40	9.3	
11	1,316	8.05	9.3	
12	1,451	8.97	9.4	
13	1,522	13.11	13.1	
14	1,850	17.15	14.0	
15	1,992	16.25	12.4	
16	2,260	11.63	7.8	
17	2,522	13.36	8.0	
18	2,908	29.92	15.6	
19	4,432	17.94	6.1	
20	10,380	75.00	10.9	Upper Marker

**Region table for sample 4 : IR50-2-1mm-1**

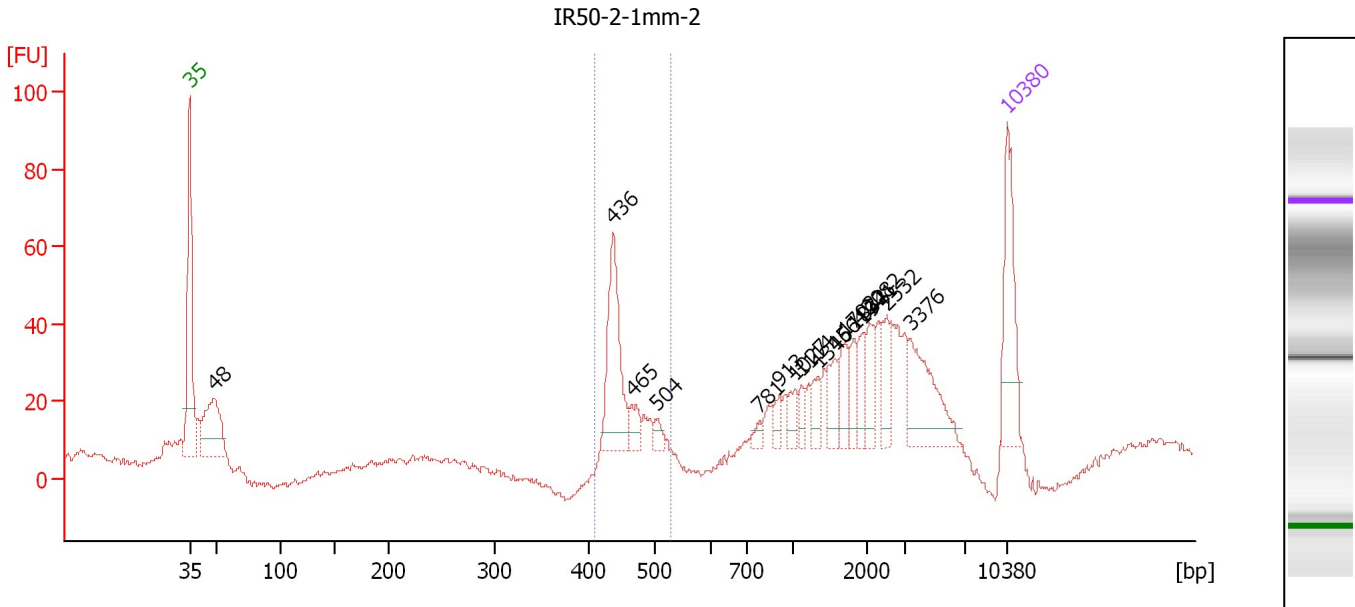
From [bp]	To [bp]	Average Size [bp]	Molarity [pmol/l]	Conc. [pg/μl]	Corr. Area	% of Total	Size distribution in CV [%]	Color
406	529	455	539.7	161.85	125.9	28	5.7	Blue



Assay Class: High Sensitivity DNA Assay  
 Data Path: C:\...ents and Settings\Bioanalyzer\2012-08-13\2012-08-13\_002.xad

Created: 8/13/2012 9:55:31 AM  
 Modified: 8/13/2012 10:37:35 AM

**Electropherogram Summary Continued ...**



**Overall Results for sample 5 : IR50-2-1mm-2**

Number of peaks found: 16      Corr. Area 1: 126.9  
 Noise: 0.8

**Peak table for sample 5 : IR50-2-1mm-2**

Peak	Size [bp]	Conc. [pg/μl]	Molarity [pmol/l]	Observations
1	35	125.00	5,411.3	Lower Marker
2	48	119.53	3,738.6	
3	436	126.07	437.6	
4	465	20.88	68.0	
5	504	12.01	36.1	
6	781	8.59	16.7	
7	913	10.96	18.2	
8	1,027	16.42	24.2	
9	1,114	11.88	16.2	
10	1,346	17.98	20.2	
11	1,564	26.27	25.5	
12	1,702	25.53	22.7	
13	1,832	22.20	18.4	
14	1,941	20.40	15.9	
15	2,082	27.84	20.3	
16	2,532	27.14	16.2	
17	3,376	74.85	33.6	
18	10,380	75.00	10.9	Upper Marker

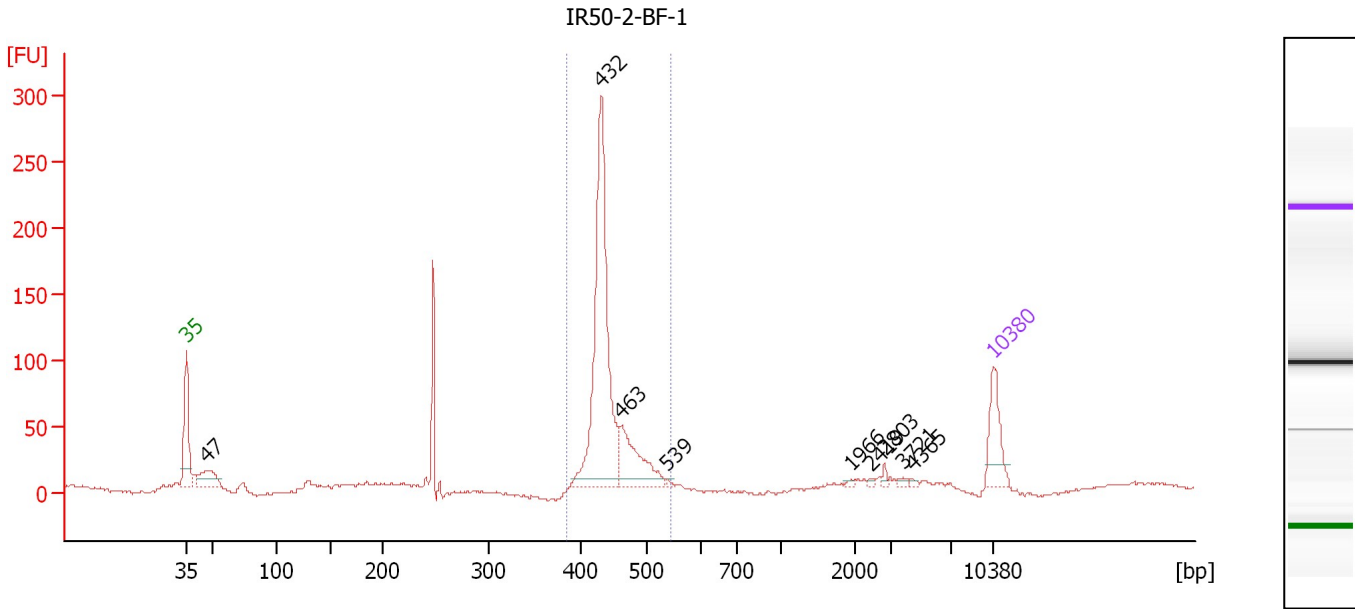
**Region table for sample 5 : IR50-2-1mm-2**

From [bp]	To [bp]	Average Size [bp]	Molarity [pmol/l]	Conc. [pg/μl]	Corr. Area	% of Total	Size distribution in CV [%]	Color
407	530	453	609.6	181.98	126.9	21	5.5	Blue

Assay Class: High Sensitivity DNA Assay  
 Data Path: C:\...ents and Settings\Bioanalyzer\2012-08-13\2012-08-13\_002.xad

Created: 8/13/2012 9:55:31 AM  
 Modified: 8/13/2012 10:37:35 AM

**Electropherogram Summary Continued ...**



**Overall Results for sample 6 : IR50-2-BF-1**

Number of peaks found: 9      Corr. Area 1: 602.8  
 Noise: 1.1

**Peak table for sample 6 : IR50-2-BF-1**

Peak	Size [bp]	Conc. [pg/μl]	Molarity [pmol/l]	Observations
1	35	125.00	5,411.3	Lower Marker
2	47	84.34	2,730.4	
3	432	592.22	2,077.6	
4	463	147.19	481.8	
5	539	4.13	11.6	
6	1,966	3.36	2.6	
7	2,419	3.34	2.1	
8	2,803	5.56	3.0	
9	3,721	5.35	2.2	
10	4,365	3.75	1.3	
11	10,380	75.00	10.9	Upper Marker

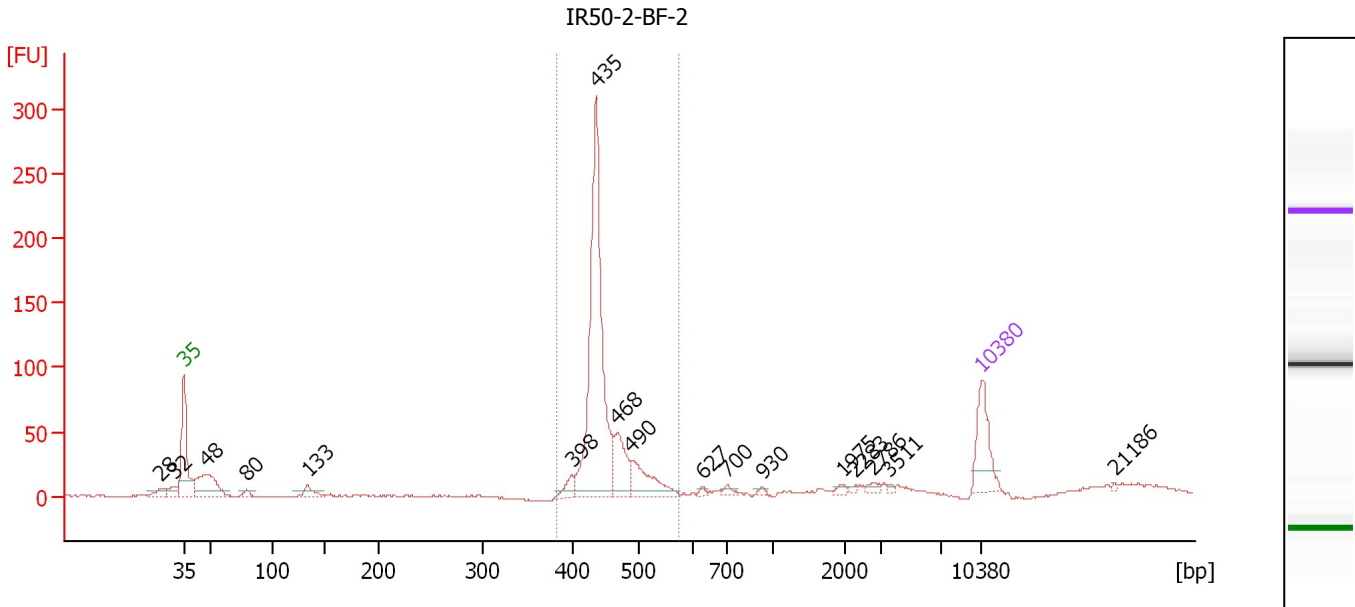
**Region table for sample 6 : IR50-2-BF-1**

From [bp]	To [bp]	Average Size [bp]	Molarity [pmol/l]	Conc. [pg/μl]	Corr. Area	% of Total	Size distribution in CV [%]	Color
385	547	443	2,533.0	739.01	602.8	75	5.9	Blue

Assay Class: High Sensitivity DNA Assay  
 Data Path: C:\...ents and Settings\Bioanalyzer\2012-08-13\2012-08-13\_002.xad

Created: 8/13/2012 9:55:31 AM  
 Modified: 8/13/2012 10:37:35 AM

**Electropherogram Summary Continued ...**



**Overall Results for sample 7 : IR50-2-BF-2**

Number of peaks found: 17                      Corr. Area 1: 615.2  
 Noise: 0.6

**Peak table for sample 7 : IR50-2-BF-2**

Peak	Size [bp]	Conc. [pg/μl]	Molarity [pmol/l]	Observations
1	28	0.00	0.0	
2	32	0.00	0.0	
3	35	125.00	5,411.3	Lower Marker
4	48	134.42	4,202.9	
5	80	14.34	273.3	
6	133	32.02	364.4	
7	398	22.30	84.8	
8	435	534.03	1,858.5	
9	468	85.38	276.7	
10	490	83.84	259.4	
11	627	5.63	13.6	
12	700	8.91	19.3	
13	930	4.31	7.0	
14	1,975	5.77	4.4	
15	2,283	3.26	2.2	
16	2,786	8.99	4.9	
17	3,511	3.22	1.4	
18	10,380	75.00	10.9	Upper Marker
19	21,186	0.00	0.0	

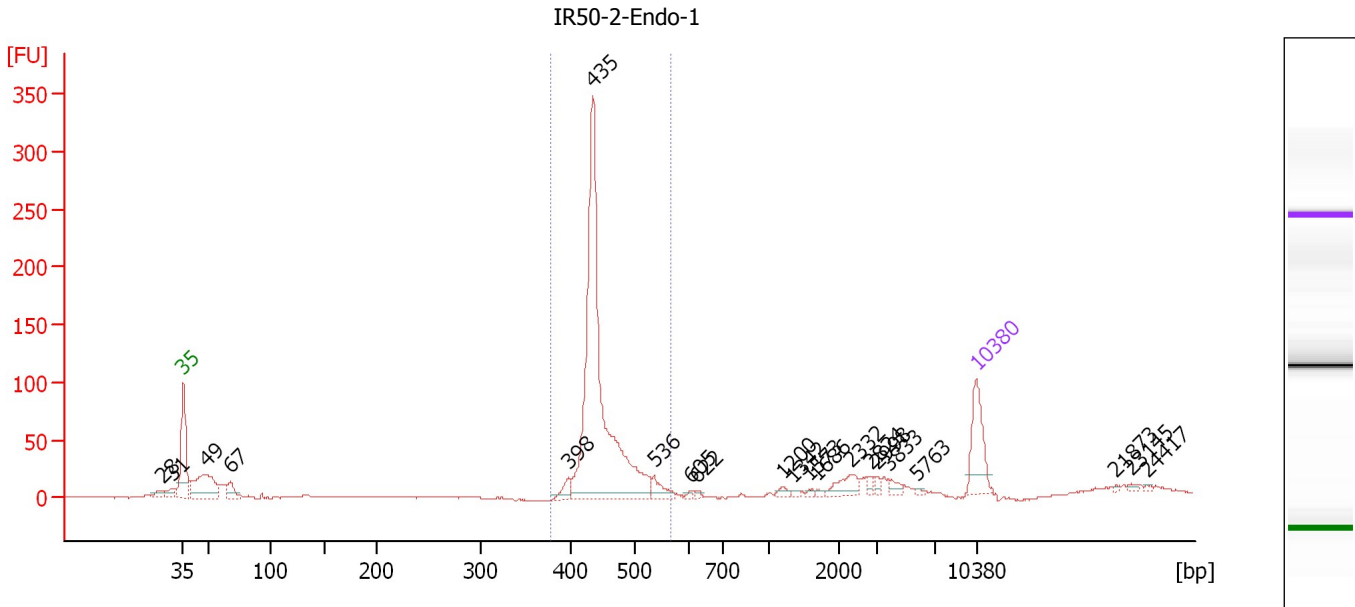
**Region table for sample 7 : IR50-2-BF-2**

From [bp]	To [bp]	Average Size [bp]	Molarity [pmol/l]	Conc. [pg/μl]	Corr. Area	% of Total	Size distribution in CV [%]	Color
382	576	447	2,319.7	682.18	615.2	76	6.6	Blue

Assay Class: High Sensitivity DNA Assay  
 Data Path: C:\...ents and Settings\Bioanalyzer\2012-08-13\2012-08-13\_002.xad

Created: 8/13/2012 9:55:31 AM  
 Modified: 8/13/2012 10:37:35 AM

**Electropherogram Summary Continued ...**



**Overall Results for sample 8 : IR50-2-Endo-1**

Number of peaks found: 21                      Corr. Area 1: 681.8  
 Noise: 0.6

**Peak table for sample 8 : IR50-2-Endo-1**


Peak	Size [bp]	Conc. [pg/μl]	Molarity [pmol/l]	Observations
1	28	0.00	0.0	
2	31	0.00	0.0	
3	35	125.00	5,411.3	Lower Marker
4	49	156.95	4,898.1	
5	67	36.08	811.4	
6	398	24.15	91.9	
7	435	741.89	2,586.0	
8	536	27.54	77.9	
9	605	4.61	11.5	
10	622	4.95	12.0	
11	1,200	7.91	10.0	
12	1,342	3.70	4.2	
13	1,573	3.28	3.2	
14	1,686	3.11	2.8	
15	2,332	30.05	19.5	
16	2,824	7.71	4.1	
17	2,998	7.41	3.7	
18	3,833	11.30	4.5	
19	5,763	3.22	0.8	
20	10,380	75.00	10.9	Upper Marker
21	21,873	0.00	0.0	
22	23,145	0.00	0.0	
23	24,417	0.00	0.0	

Assay Class: High Sensitivity DNA Assay  
Data Path: C:\...ents and Settings\Bioanalyzer\2012-08-13\2012-08-13\_002.xad

Created: 8/13/2012 9:55:31 AM  
Modified: 8/13/2012 10:37:35 AM

**Electropherogram Summary Continued ...**

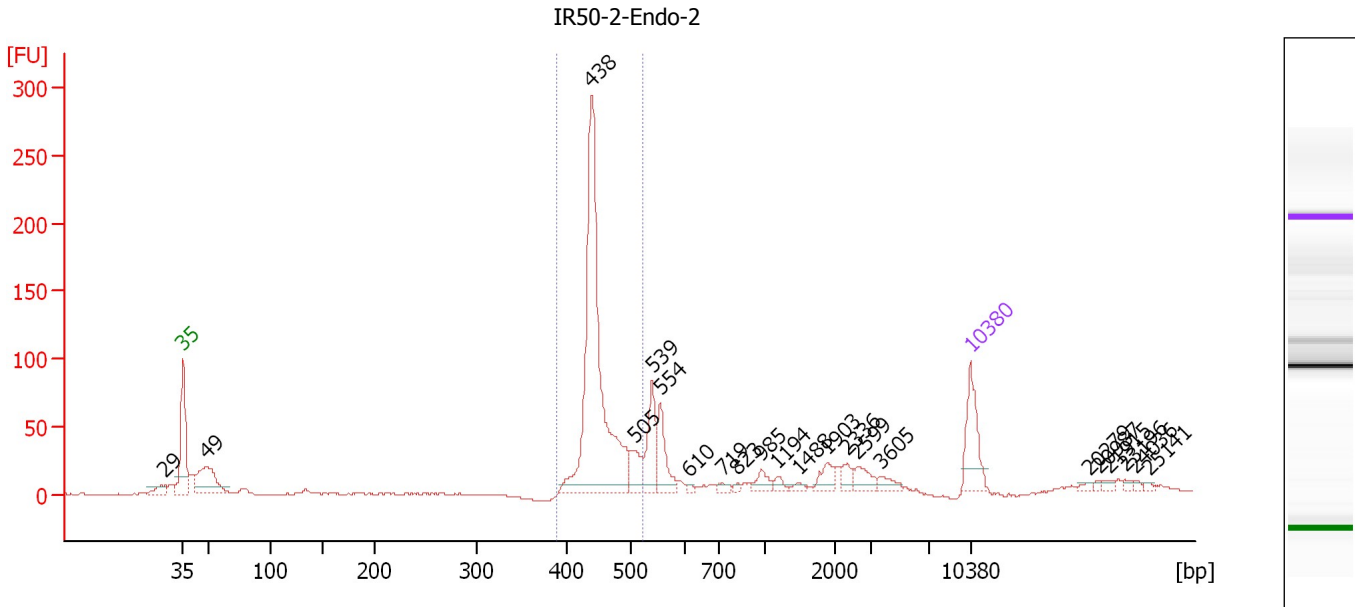
... Region table for sample 8 : IR50-2-Endo-1

From [bp]	To [bp]	Average Size [bp]	Molarity [pmol/l]	Conc. [pg/ $\mu$ l]	Corr. Area	% of Total	Size distribution in CV [%]	Color
379	568	448	2,463.9	725.44	681.8	71	6.7	

Assay Class: High Sensitivity DNA Assay  
 Data Path: C:\...ents and Settings\Bioanalyzer\2012-08-13\2012-08-13\_002.xad

Created: 8/13/2012 9:55:31 AM  
 Modified: 8/13/2012 10:37:35 AM

**Electropherogram Summary Continued ...**



**Overall Results for sample 9 : IR50-2-Endo-2**

Number of peaks found: 22                      Corr. Area 1: 601.9  
 Noise: 0.6

**Peak table for sample 9 : IR50-2-Endo-2**

Peak	Size [bp]	Conc. [pg/μl]	Molarity [pmol/l]	Observations
1	29	0.00	0.0	
2	35	125.00	5,411.3	Lower Marker
3	49	147.58	4,596.2	
4	438	652.50	2,258.4	
5	505	47.39	142.3	
6	539	90.48	254.6	
7	554	73.99	202.2	
8	610	4.18	10.4	
9	719	9.28	19.6	
10	823	4.94	9.1	
11	985	20.57	31.6	
12	1,194	11.64	14.8	
13	1,488	7.76	7.9	
14	1,903	26.37	21.0	
15	2,336	18.23	11.8	
16	2,599	26.10	15.2	
17	3,605	16.22	6.8	
18	10,380	75.00	10.9	Upper Marker
19	20,279	0.00	0.0	
20	20,987	0.00	0.0	
21	21,915	0.00	0.0	
22	23,196	0.00	0.0	
23	24,036	0.00	0.0	
24	25,141	0.00	0.0	

Assay Class: High Sensitivity DNA Assay  
Data Path: C:\...ents and Settings\Bioanalyzer\2012-08-13\2012-08-13\_002.xad

Created: 8/13/2012 9:55:31 AM  
Modified: 8/13/2012 10:37:35 AM

**Electropherogram Summary Continued ...**

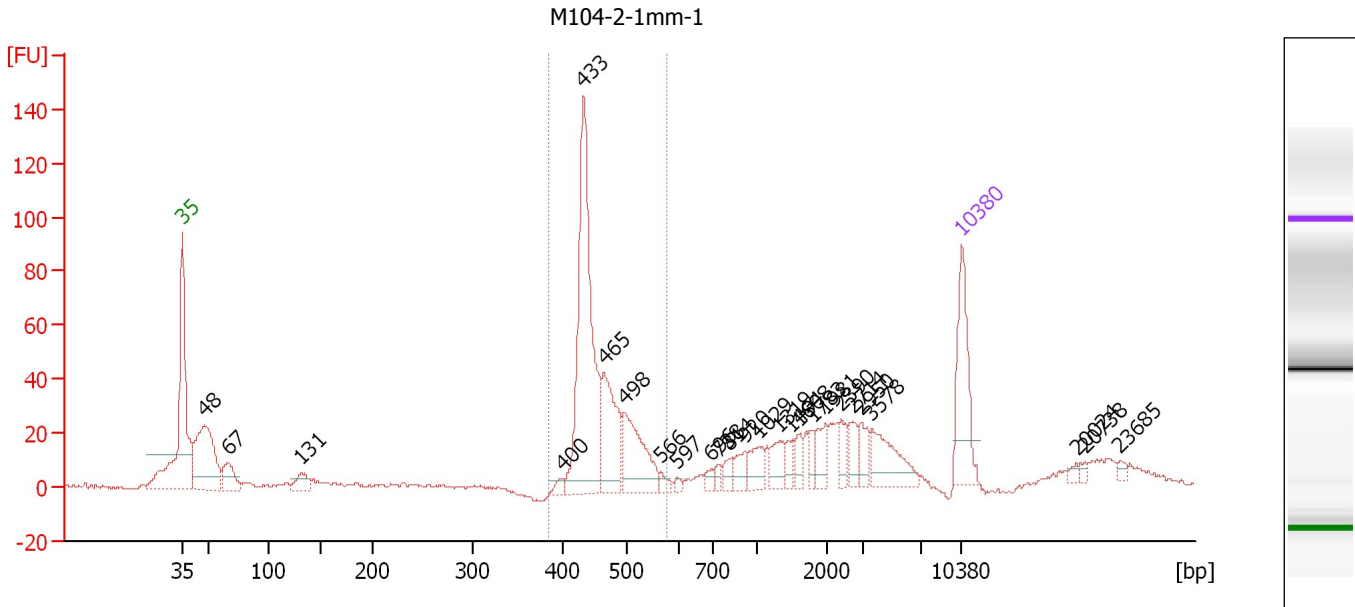
... Region table for sample 9 : IR50-2-Endo-2

From [bp]	To [bp]	Average Size [bp]	Molarity [pmol/l]	Conc. [pg/μl]	Corr. Area	% of Total	Size distribution in CV [%]	Color
388	521	449	2,374.4	702.85	601.9	51	5.5	■

Assay Class: High Sensitivity DNA Assay  
 Data Path: C:\...ents and Settings\Bioanalyzer\2012-08-13\2012-08-13\_002.xad

Created: 8/13/2012 9:55:31 AM  
 Modified: 8/13/2012 10:37:35 AM

**Electropherogram Summary Continued ...**



**Overall Results for sample 10 : M104-2-1mm-1**

Number of peaks found: 26                      Corr. Area 1: 398.1  
 Noise: 0.6

**Peak table for sample 10 : M104-2-1mm-1**

Peak	Size [bp]	Conc. [pg/μl]	Molarity [pmol/l]	Observations
1	35	125.00	5,411.3	Lower Marker
2	48	183.51	5,773.0	
3	67	46.37	1,052.8	
4	131	27.34	315.3	
5	400	8.68	32.9	
6	433	310.72	1,086.4	
7	465	102.01	332.0	
8	498	95.30	290.2	
9	566	7.60	20.4	
10	597	4.37	11.1	
11	696	8.64	18.8	
12	738	7.87	16.2	
13	814	12.23	22.7	
14	920	18.72	30.8	
15	1,029	24.83	36.5	
16	1,319	23.87	27.4	
17	1,494	11.72	11.9	
18	1,608	15.31	14.4	
19	1,783	12.33	10.5	
20	1,981	22.12	16.9	
21	2,390	18.30	11.6	
22	2,714	19.01	10.6	
23	2,950	18.74	9.6	
24	3,578	50.87	21.5	
25	10,380	75.00	10.9	Upper Marker
26	20,024	0.00	0.0	




Assay Class: High Sensitivity DNA Assay  
Data Path: C:\...ents and Settings\Bioanalyzer\2012-08-13\2012-08-13\_002.xad

Created: 8/13/2012 9:55:31 AM  
Modified: 8/13/2012 10:37:35 AM

**Electropherogram Summary Continued ...****... Peak table for sample 10 : M104-2-1mm-1**

Peak	Size [bp]	Conc. [pg/μl]	Molarity [pmol/l]	Observations
27	20,738	0.00	0.0	
28	23,685	0.00	0.0	

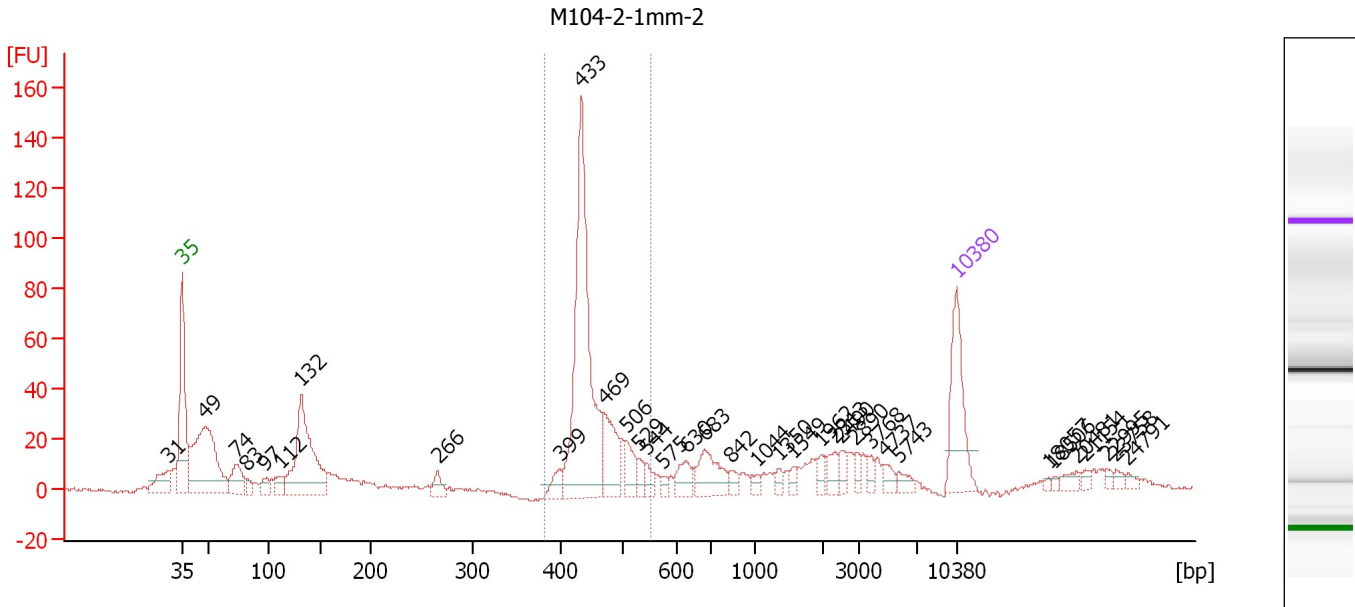
**Region table for sample 10 : M104-2-1mm-1**

From [bp]	To [bp]	Average Size [bp]	Molarity [pmol/l]	Conc. [pg/μl]	Corr. Area	% of Total	Size distribution in CV [%]	Color
385	579	460	1,573.9	475.61	398.1	44	7.8	

Assay Class: High Sensitivity DNA Assay  
 Data Path: C:\...ents and Settings\Bioanalyzer\2012-08-13\2012-08-13\_002.xad

Created: 8/13/2012 9:55:31 AM  
 Modified: 8/13/2012 10:37:35 AM

**Electropherogram Summary Continued ...**



**Overall Results for sample 11 : M104-2-1mm-2**

Number of peaks found: 35                      Corr. Area 1: 378.7  
 Noise: 0.6

**Peak table for sample 11 : M104-2-1mm-2**

Peak	Size [bp]	Conc. [pg/μl]	Molarity [pmol/l]	Observations
1	31	0.00	0.0	
2	35	125.00	5,411.3	Lower Marker
3	49	257.37	8,031.9	
4	74	51.02	1,044.8	
5	83	12.79	234.0	
6	97	17.70	275.5	
7	112	21.84	294.5	
8	132	217.59	2,497.5	
9	266	19.69	112.2	
10	399	18.54	70.4	
11	433	348.86	1,219.4	
12	469	64.35	207.8	
13	506	28.26	84.7	
14	529	14.83	42.5	
15	544	13.99	38.9	
16	575	6.89	18.2	
17	630	25.25	60.8	
18	683	50.62	112.3	
19	842	10.60	19.1	
20	1,044	7.67	11.1	
21	1,350	7.76	8.7	
22	1,549	6.31	6.2	
23	1,962	8.43	6.5	
24	2,313	14.79	9.7	
25	2,490	11.92	7.2	
26	2,890	8.59	4.5	

Assay Class: High Sensitivity DNA Assay  
 Data Path: C:\...ents and Settings\Bioanalyzer\2012-08-13\2012-08-13\_002.xad


Created: 8/13/2012 9:55:31 AM  
 Modified: 8/13/2012 10:37:35 AM

**Electropherogram Summary Continued ...**

**... Peak table for sample 11 : M104-2-1mm-2**

Peak	Size [bp]	Conc. [pg/μl]	Molarity [pmol/l]	Observations
27	3,768	7.69	3.1	
28	4,737	10.95	3.5	
29	5,743	9.57	2.5	
30	10,380	75.00	10.9	Upper Marker
31	18,057	0.00	0.0	
32	18,506	0.00	0.0	
33	20,481	0.00	0.0	
34	21,154	0.00	0.0	
35	22,995	0.00	0.0	
36	23,758	0.00	0.0	
37	24,791	0.00	0.0	

**Region table for sample 11 : M104-2-1mm-2**

From [bp]	To [bp]	Average Size [bp]	Molarity [pmol/l]	Conc. [pg/μl]	Corr. Area	% of Total	Size distribution in CV [%]	Color
383	553	452	1,505.7	447.46	378.7	38	7.3	

Assay Class: High Sensitivity DNA Assay  
Data Path: C:\...ents and Settings\Bioanalyzer\2012-08-13\2012-08-13\_002.xad

Created: 8/13/2012 9:55:31 AM  
Modified: 8/13/2012 10:37:35 AM

**Gel Image**

