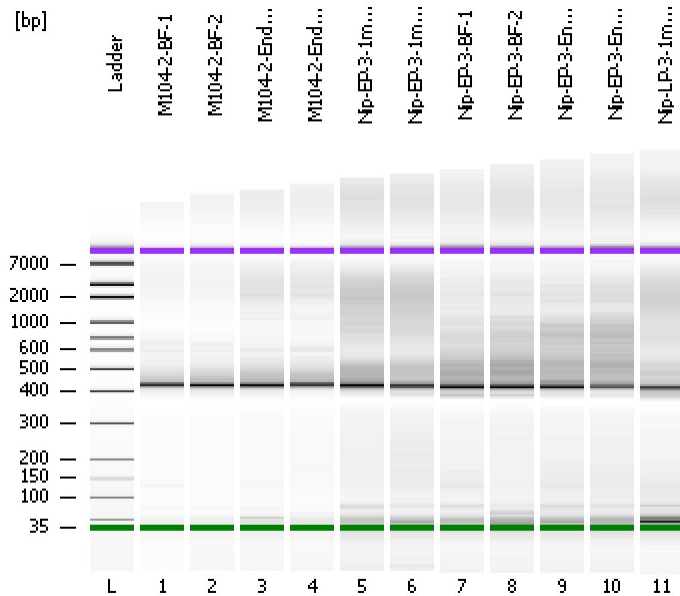


Assay Class: High Sensitivity DNA Assay  
Data Path: C:\...ents and Settings\Bioanalyzer\2012-08-13\2012-08-13\_003.xad

Created: 8/13/2012 10:39:38 AM  
Modified: 8/13/2012 11:23:45 AM

Electrophoresis File Run Summary



Instrument Information:

Instrument Name: DE13701086      Firmware: C.01.069  
Serial#: DE13701086      Type: G2938B

Assay Information:

Assay Origin Path: C:\Program Files\Agilent\2100 bioanalyzer\2100 expert\assays\dsDNA\High Sensitivity DNA.xsy  
Assay Class: High Sensitivity DNA Assay  
Version: 1.03  
Assay Comments: Copyright © 2003-2010 Agilent Technologies

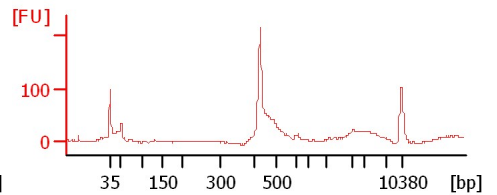
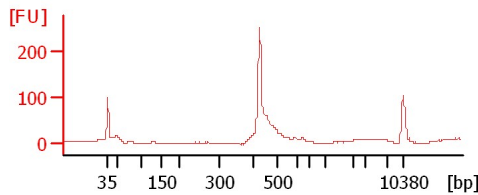
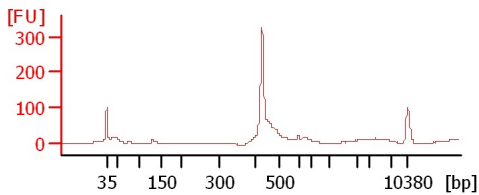
Chip Information:

Chip Lot #:  
Reagent Kit Lot #:  
Chip Comments:

M104-2-BF-1

M104-2-BF-2

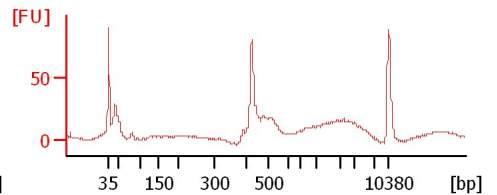
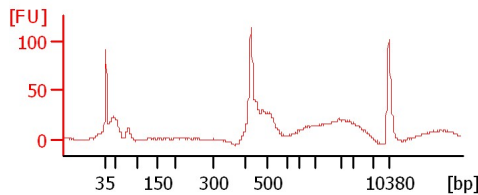
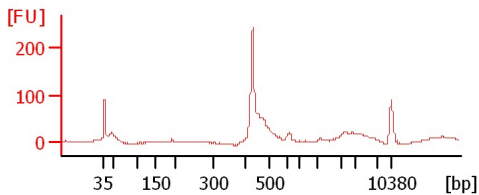
M104-2-Endo-1



M104-2-Endo-2

Nip-EP-3-1mm-1

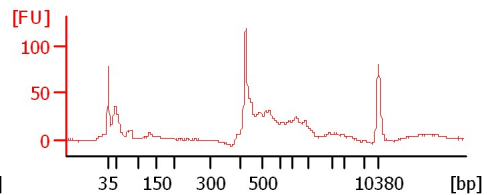
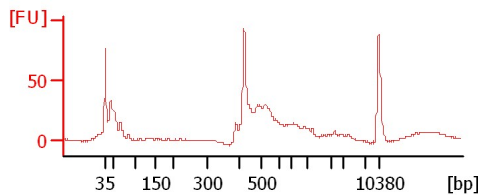
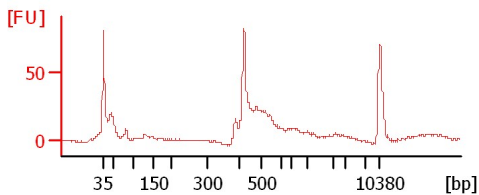
Nip-EP-3-1mm-2



Nip-EP-3-BF-1

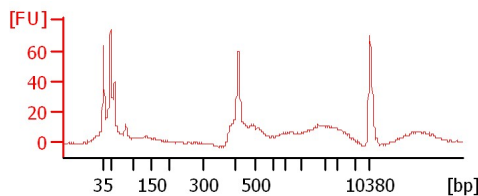
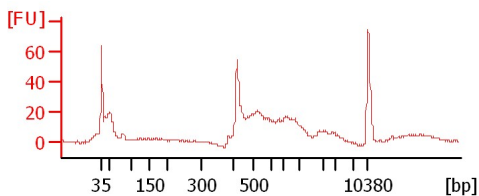
Nip-EP-3-BF-2

Nip-EP-3-Endo-1



Nip-EP-3-Endo-2

Nip-LP-3-1mm-1



Assay Class: High Sensitivity DNA Assay  
 Data Path: C:\...ents and Settings\Bioanalyzer\2012-08-13\2012-08-13\_003.xad

Created: 8/13/2012 10:39:38 AM  
 Modified: 8/13/2012 11:23:45 AM

**Electrophoresis File Run Summary (Chip Summary)**

Sample Name	Sample Comment	Rest. Digest	Status	Observation	Result Label	Result Color
M104-2-BF-1		<input type="checkbox"/>	✓			
M104-2-BF-2		<input type="checkbox"/>	✓			
M104-2-Endo-1		<input type="checkbox"/>	✓			
M104-2-Endo-2		<input type="checkbox"/>	✓			
Nip-EP-3-1mm-1		<input type="checkbox"/>	✓			
Nip-EP-3-1mm-2		<input type="checkbox"/>	✓			
Nip-EP-3-BF-1		<input type="checkbox"/>	✓			
Nip-EP-3-BF-2		<input type="checkbox"/>	✓			
Nip-EP-3-Endo-1		<input type="checkbox"/>	✓			
Nip-EP-3-Endo-2		<input type="checkbox"/>	✓			
Nip-LP-3-1mm-1		<input type="checkbox"/>	✓			
Ladder		<input type="checkbox"/>	✓			

**Chip Lot #**

**Reagent Kit Lot #**

**Chip Comments :**

Assay Class: High Sensitivity DNA Assay  
 Data Path: C:\...ents and Settings\Bioanalyzer\2012-08-13\2012-08-13\_003.xad

Created: 8/13/2012 10:39:38 AM  
 Modified: 8/13/2012 11:23:45 AM

**Electrophoresis Assay Details**

**General Analysis Settings**

Number of Available Sample and Ladder Wells (Max.) : 12  
 Minimum Visible Range [s] : 32  
 Maximum Visible Range [s] : 138  
 Start Analysis Time Range [s] : 33  
 End Analysis Time Range [s] : 137.5  
 Ladder Concentration [pg/μl] : 1950  
 Uses Standard Area for Ladder Fragments  
 Lower Marker Concentration [pg/μl] : 125  
 Upper Marker Concentration [pg/μl] : 75  
 Used Upper Marker for Quantitation  
 Standard Curve Fit is Point to Point  
 Show Data Aligned to Lower and Upper Marker

**Integrator Settings**

Integration Start Time [s] : 33.05  
 Integration End Time [s] : 137  
 Slope Threshold : 0.8  
 Height Threshold [FU] : 5  
 Area Threshold : 0.1  
 Width Threshold [s] : 0.6  
 Baseline Plateau [s] : 0.5

**Filter Settings**

Filter Width [s] : 0.5  
 Polynomial Order : 4

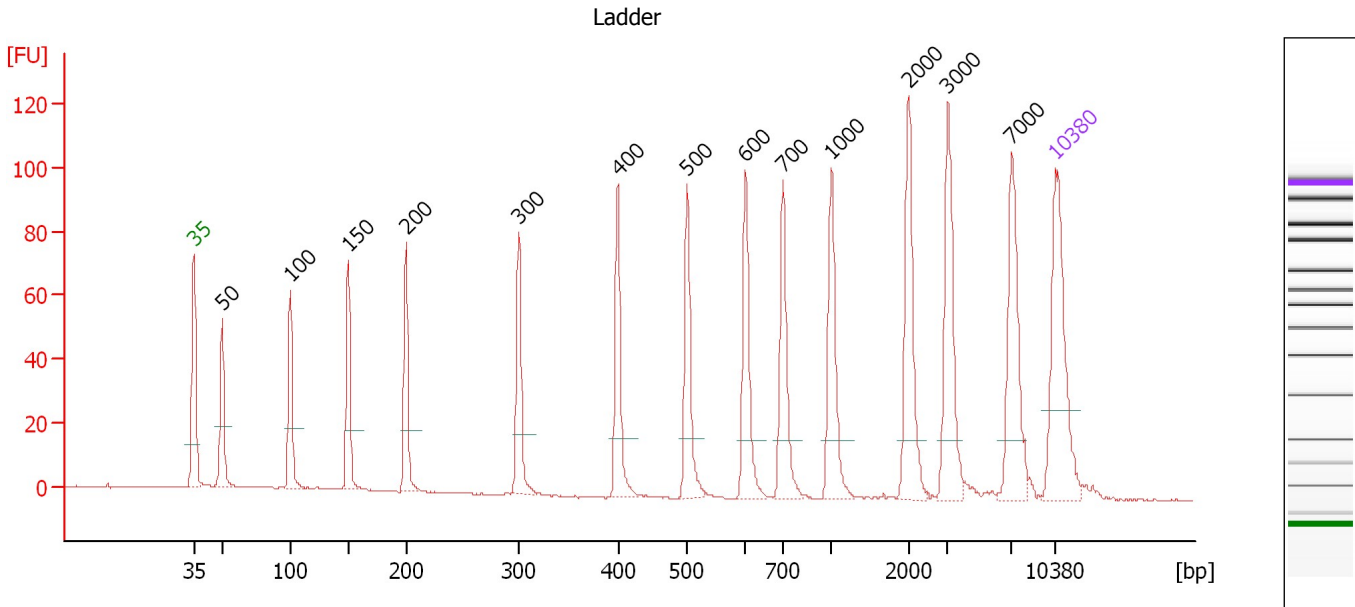
**Ladder**

Ladder Peak	Size	Area
1	35	160
2	50	210
3	100	208
4	150	221
5	200	242
6	300	270
7	400	305
8	500	306
9	600	336
10	700	321
11	1000	366
12	2000	413
13	3000	411
14	7000	400
15	10380	214

Assay Class: High Sensitivity DNA Assay  
 Data Path: C:\...ents and Settings\Bioanalyzer\2012-08-13\2012-08-13\_003.xad

Created: 8/13/2012 10:39:38 AM  
 Modified: 8/13/2012 11:23:45 AM

**Electropherogram Summary**



**Overall Results for Ladder**

Noise: 0.2

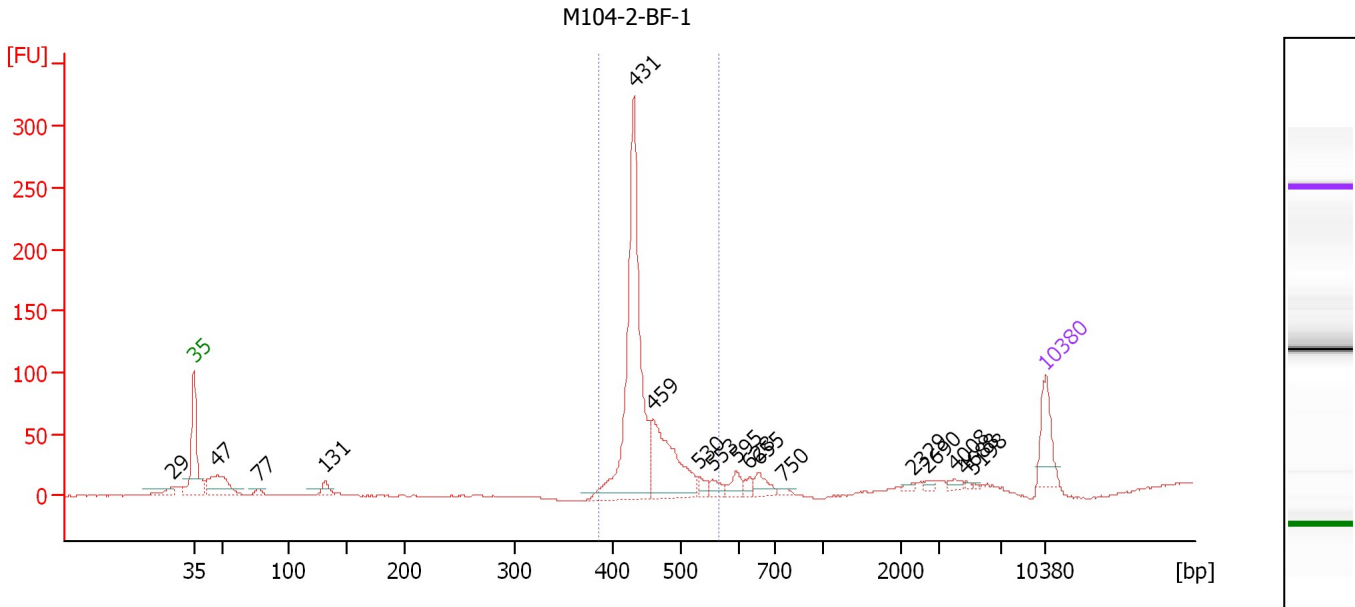
**Peak table for Ladder**

Peak	Size [bp]	Conc. [pg/μl]	Molarity [pmol/l]	Observations
1	35	125.00	5,411.3	Lower Marker
2	50	150.00	4,545.5	Ladder Peak
3	100	150.00	2,272.7	Ladder Peak
4	150	150.00	1,515.2	Ladder Peak
5	200	150.00	1,136.4	Ladder Peak
6	300	150.00	757.6	Ladder Peak
7	400	150.00	568.2	Ladder Peak
8	500	150.00	454.5	Ladder Peak
9	600	150.00	378.8	Ladder Peak
10	700	150.00	324.7	Ladder Peak
11	1,000	150.00	227.3	Ladder Peak
12	2,000	150.00	113.6	Ladder Peak
13	3,000	150.00	75.8	Ladder Peak
14	7,000	150.00	32.5	Ladder Peak
15	10,380	75.00	10.9	Upper Marker

Assay Class: High Sensitivity DNA Assay  
 Data Path: C:\...ents and Settings\Bioanalyzer\2012-08-13\2012-08-13\_003.xad

Created: 8/13/2012 10:39:38 AM  
 Modified: 8/13/2012 11:23:45 AM

**Electropherogram Summary Continued ...**



**Overall Results for sample 1 : M104-2-BF-1**

Number of peaks found: 17                      Corr. Area 1: 634.1  
 Noise: 0.2

**Peak table for sample 1 : M104-2-BF-1**

Peak	Size [bp]	Conc. [pg/μl]	Molarity [pmol/l]	Observations
1	29	0.00	0.0	
2	35	125.00	5,411.3	Lower Marker
3	47	151.15	4,840.2	
4	77	16.16	317.4	
5	131	31.65	365.6	
6	431	678.42	2,387.0	
7	459	254.48	840.7	
8	530	20.13	57.5	
9	553	23.50	64.4	
10	595	30.67	78.1	
11	628	15.84	38.2	
12	655	34.18	79.1	
13	750	8.22	16.6	
14	2,329	5.97	3.9	
15	2,690	6.51	3.7	
16	4,008	10.33	3.9	
17	4,688	3.79	1.2	
18	5,198	2.36	0.7	
19	10,380	75.00	10.9	Upper Marker

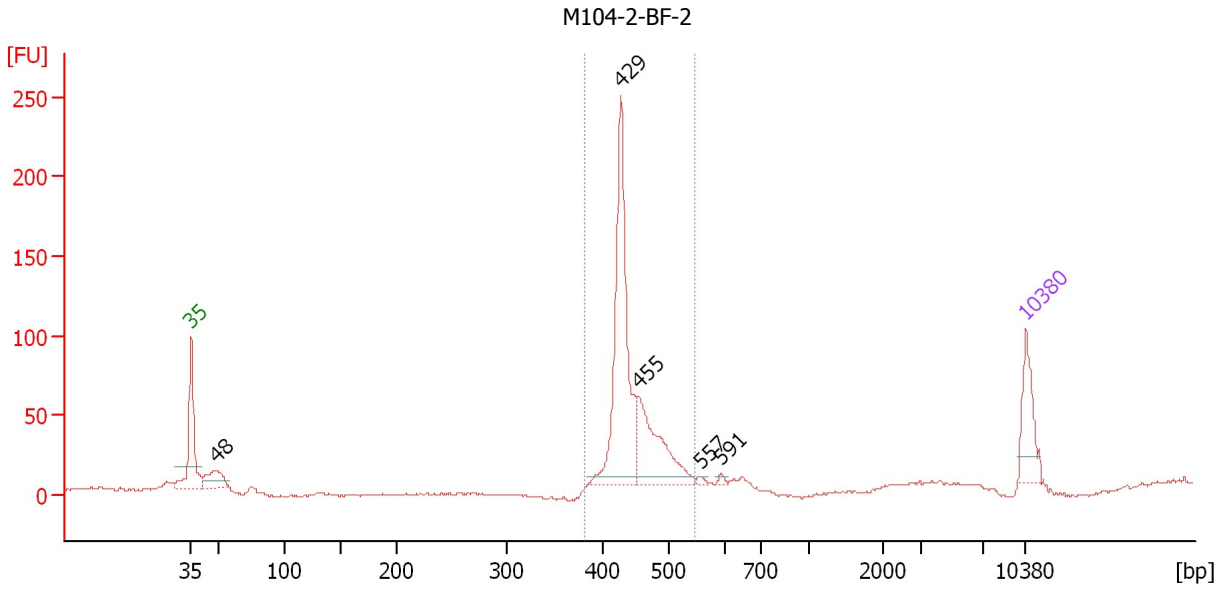
**Region table for sample 1 : M104-2-BF-1**

From [bp]	To [bp]	Average Size [bp]	Molarity [pmol/l]	Conc. [pg/μl]	Corr. Area	% of Total	Size distribution in CV [%]	Color
386	563	445	2,818.8	826.39	634.1	78	6.6	Blue

Assay Class: High Sensitivity DNA Assay  
 Data Path: C:\...ents and Settings\Bioanalyzer\2012-08-13\2012-08-13\_003.xad

Created: 8/13/2012 10:39:38 AM  
 Modified: 8/13/2012 11:23:45 AM

**Electropherogram Summary Continued ...**



**Overall Results for sample 2 : M104-2-BF-2**

Number of peaks found: 5                      Corr. Area 1: 521.8  
 Noise: 0.5

**Peak table for sample 2 : M104-2-BF-2**

Peak	Size [bp]	Conc. [pg/μl]	Molarity [pmol/l]	Observations
1	35	125.00	5,411.3	Lower Marker
2	48	76.75	2,400.4	
3	429	444.69	1,571.8	
4	455	196.72	655.3	
5	557	5.82	15.9	
6	591	5.63	14.4	
7	10,380	75.00	10.9	Upper Marker

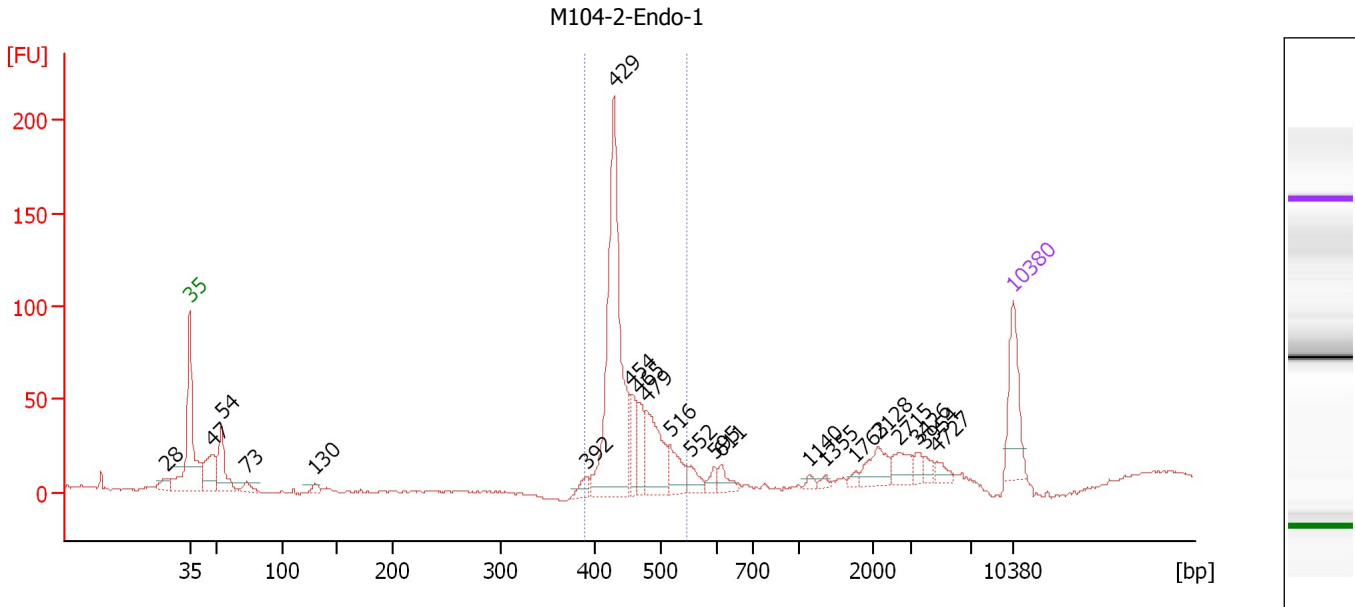
**Region table for sample 2 : M104-2-BF-2**

From [bp]	To [bp]	Average Size [bp]	Molarity [pmol/l]	Conc. [pg/μl]	Corr. Area	% of Total	Size distribution in CV [%]	Color
382	546	445	2,177.0	637.96	521.8	87	6.5	Blue

Assay Class: High Sensitivity DNA Assay  
 Data Path: C:\...ents and Settings\Bioanalyzer\2012-08-13\2012-08-13\_003.xad

Created: 8/13/2012 10:39:38 AM  
 Modified: 8/13/2012 11:23:45 AM

**Electropherogram Summary Continued ...**



**Overall Results for sample 3 : M104-2-Endo-1**

Number of peaks found: 22                      Corr. Area 1: 481.0  
 Noise: 0.7

**Peak table for sample 3 : M104-2-Endo-1**

Peak	Size [bp]	Conc. [pg/μl]	Molarity [pmol/l]	Observations
1	28	0.00	0.0	
2	35	125.00	5,411.3	Lower Marker
3	47	95.79	3,078.9	
4	54	97.57	2,747.2	
5	73	18.40	381.9	
6	130	14.07	164.3	
7	392	19.21	74.3	
8	429	438.79	1,550.1	
9	454	54.32	181.3	
10	465	45.72	148.9	
11	479	111.43	352.6	
12	516	50.47	148.2	
13	552	22.92	62.9	
14	595	13.66	34.8	
15	611	20.32	50.4	
16	1,140	6.69	8.9	
17	1,355	5.67	6.3	
18	1,763	6.54	5.6	
19	2,128	37.61	26.8	
20	2,715	28.39	15.8	
21	3,426	12.53	5.5	
22	3,954	10.31	4.0	
23	4,727	11.77	3.8	
24	10,380	75.00	10.9	Upper Marker

Assay Class: High Sensitivity DNA Assay  
Data Path: C:\...ents and Settings\Bioanalyzer\2012-08-13\2012-08-13\_003.xad

Created: 8/13/2012 10:39:38 AM  
Modified: 8/13/2012 11:23:45 AM

**Electropherogram Summary Continued ...**

... Region table for sample 3 : M104-2-Endo-1

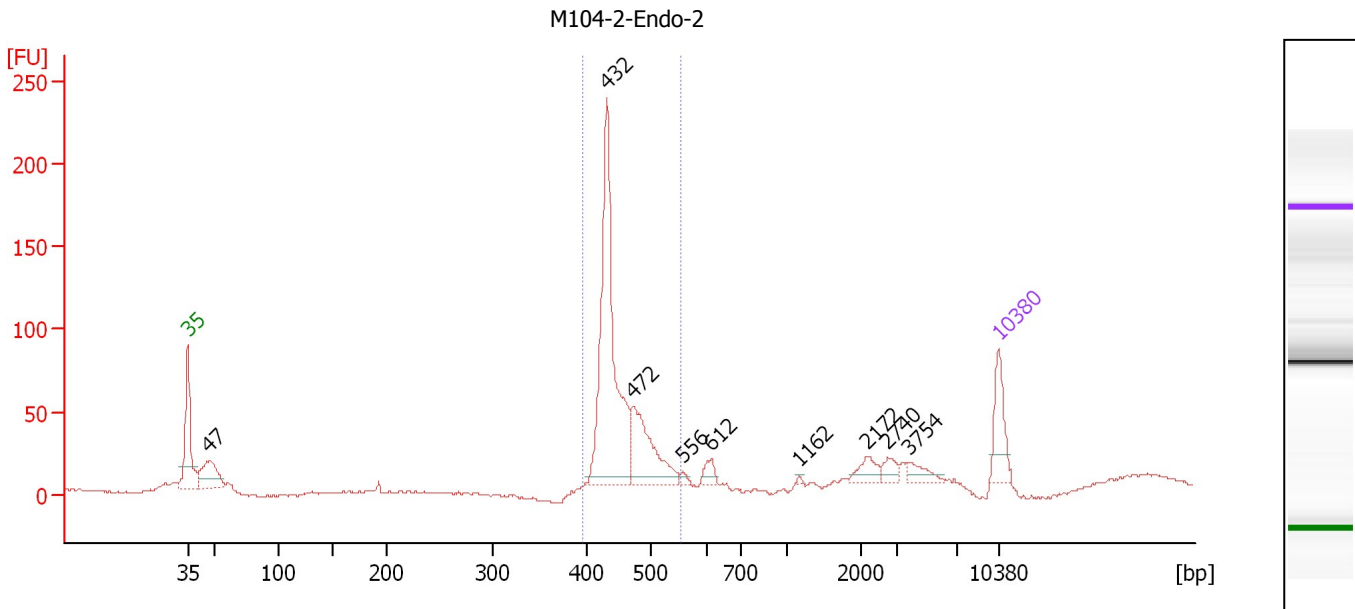
From [bp]	To [bp]	Average Size [bp]	Molarity [pmol/l]	Conc. [pg/μl]	Corr. Area	% of Total	Size distribution in CV [%]	Color
389	546	449	2,039.9	602.64	481.0	69	7.0	■



Assay Class: High Sensitivity DNA Assay  
 Data Path: C:\...ents and Settings\Bioanalyzer\2012-08-13\2012-08-13\_003.xad

Created: 8/13/2012 10:39:38 AM  
 Modified: 8/13/2012 11:23:45 AM

**Electropherogram Summary Continued ...**



**Overall Results for sample 4 : M104-2-Endo-2**

Number of peaks found: 9                      Corr. Area 1: 528.5  
 Noise: 0.8

**Peak table for sample 4 : M104-2-Endo-2**

Peak	Size [bp]	Conc. [pg/μl]	Molarity [pmol/l]	Observations
1	35	125.00	5,411.3	Lower Marker
2	47	143.34	4,588.7	
3	432	598.47	2,100.7	
4	472	202.12	649.2	
5	556	9.13	24.9	
6	612	25.09	62.1	
7	1,162	2.72	3.5	
8	2,172	33.63	23.5	
9	2,740	24.17	13.4	
10	3,754	28.64	11.6	
11	10,380	75.00	10.9	Upper Marker

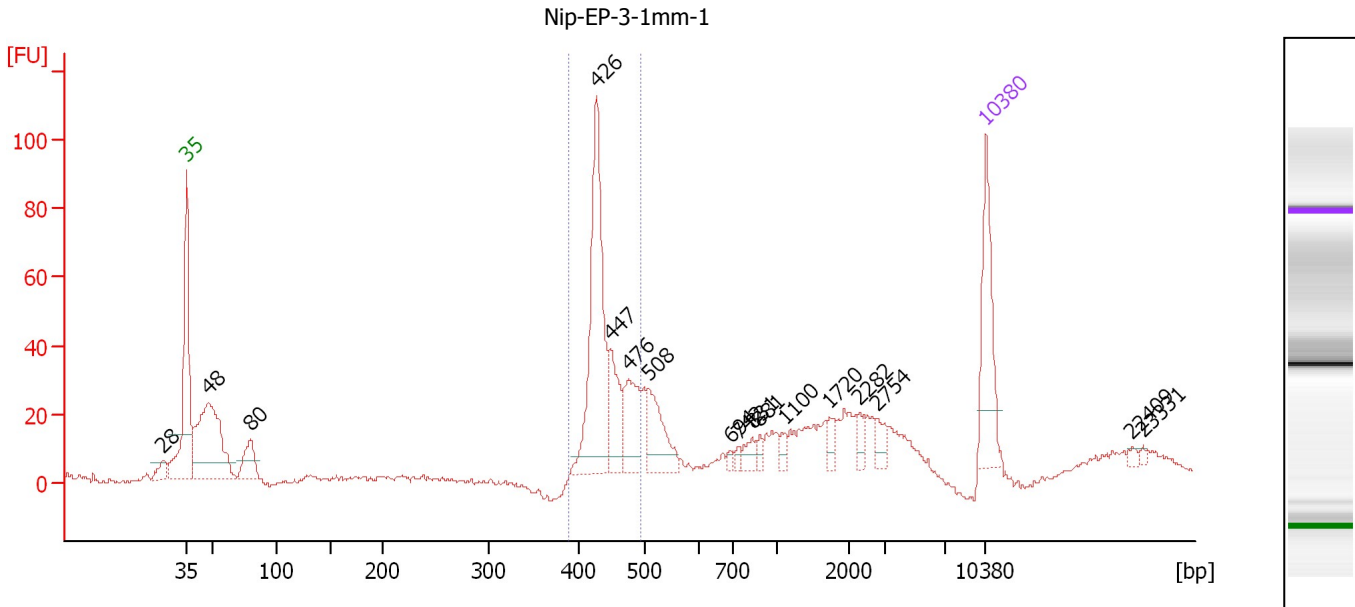
**Region table for sample 4 : M104-2-Endo-2**

From [bp]	To [bp]	Average Size [bp]	Molarity [pmol/l]	Conc. [pg/μl]	Corr. Area	% of Total	Size distribution in CV [%]	Color
395	553	451	2,750.4	816.55	528.5	69	6.9	Blue

Assay Class: High Sensitivity DNA Assay  
 Data Path: C:\...ents and Settings\Bioanalyzer\2012-08-13\2012-08-13\_003.xad

Created: 8/13/2012 10:39:38 AM  
 Modified: 8/13/2012 11:23:45 AM

**Electropherogram Summary Continued ...**



**Overall Results for sample 5 : Nip-EP-3-1mm-1**

Number of peaks found: 17                      Corr. Area 1: 273.2  
 Noise: 0.8

**Peak table for sample 5 : Nip-EP-3-1mm-1**

Peak	Size [bp]	Conc. [pg/µl]	Molarity [pmol/l]	Observations
1	28	0.00	0.0	
2	35	125.00	5,411.3	Lower Marker
3	48	231.96	7,397.5	
4	80	46.69	886.2	
5	426	223.04	793.0	
6	447	58.95	199.9	
7	476	62.49	199.0	
8	508	61.90	184.7	
9	694	4.93	10.8	
10	742	5.29	10.8	
11	831	12.85	23.4	
12	881	7.01	12.1	
13	1,100	8.89	12.2	
14	1,720	11.00	9.7	
15	2,282	9.03	6.0	
16	2,754	12.77	7.0	
17	10,380	75.00	10.9	Upper Marker
18	22,409	0.00	0.0	
19	23,331	0.00	0.0	

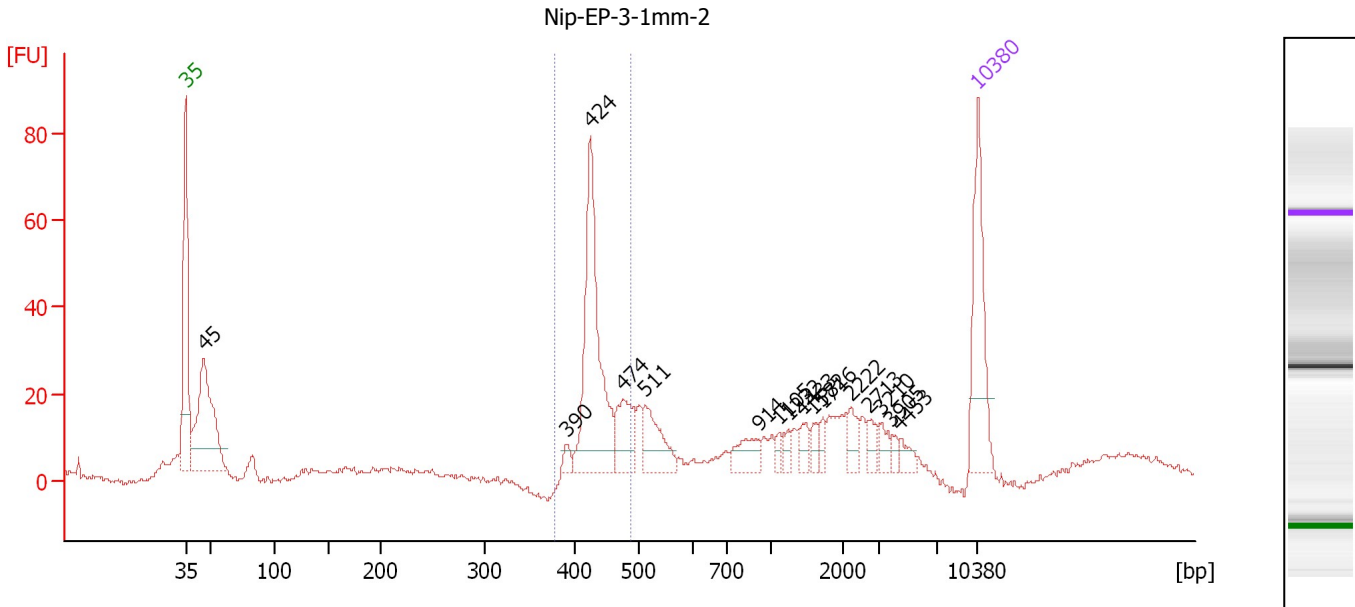
**Region table for sample 5 : Nip-EP-3-1mm-1**

From [bp]	To [bp]	Average Size [bp]	Molarity [pmol/l]	Conc. [pg/µl]	Corr. Area	% of Total	Size distribution in CV [%]	Color
388	494	441	1,174.4	341.65	273.2	36	5.3	Blue

Assay Class: High Sensitivity DNA Assay  
 Data Path: C:\...ents and Settings\Bioanalyzer\2012-08-13\2012-08-13\_003.xad

Created: 8/13/2012 10:39:38 AM  
 Modified: 8/13/2012 11:23:45 AM

**Electropherogram Summary Continued ...**



**Overall Results for sample 6 : Nip-EP-3-1mm-2**

Number of peaks found: 16                      Corr. Area 1: 174.2  
 Noise: 0.7

**Peak table for sample 6 : Nip-EP-3-1mm-2**

Peak	Size [bp]	Conc. [pg/μl]	Molarity [pmol/l]	Observations
1	35	125.00	5,411.3	Lower Marker
2	45	190.31	6,342.1	
3	390	8.18	31.8	
4	424	187.07	668.1	
5	474	47.30	151.3	
6	511	46.31	137.2	
7	914	22.57	37.4	
8	1,105	6.20	8.5	
9	1,232	7.82	9.6	
10	1,433	11.08	11.7	
11	1,582	8.27	7.9	
12	1,716	7.61	6.7	
13	2,222	15.64	10.7	
14	2,713	8.48	4.7	
15	3,210	10.32	4.9	
16	3,905	5.20	2.0	
17	4,453	8.30	2.8	
18	10,380	75.00	10.9	Upper Marker

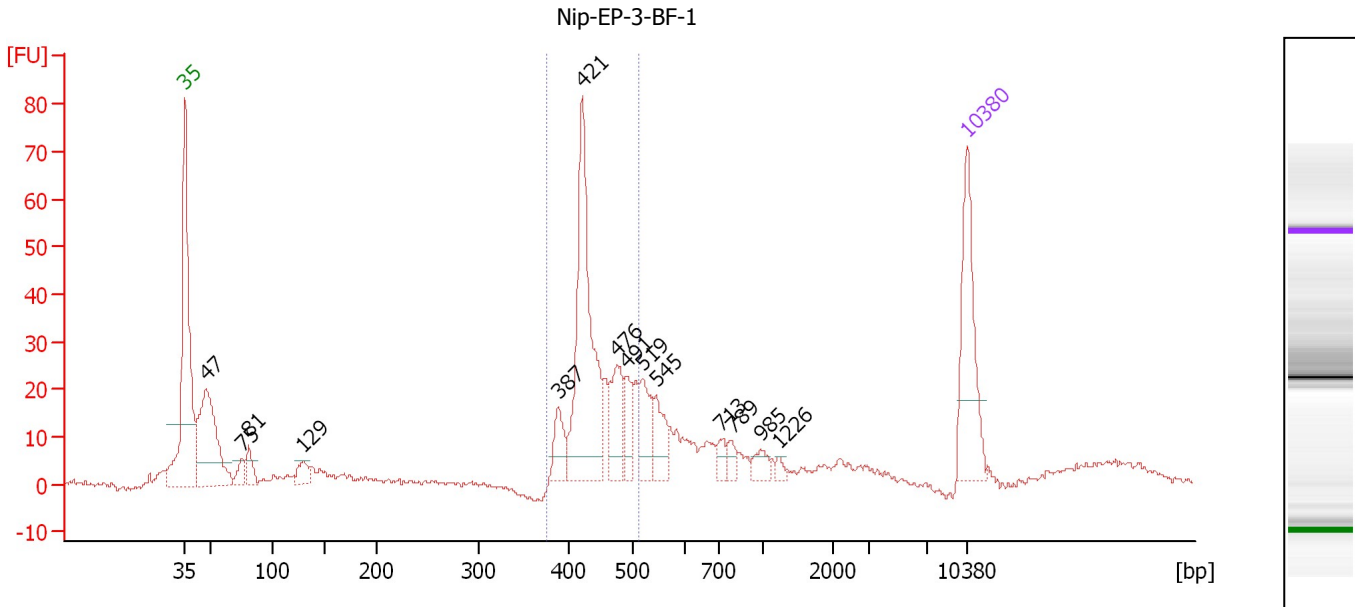
**Region table for sample 6 : Nip-EP-3-1mm-2**

From [bp]	To [bp]	Average Size [bp]	Molarity [pmol/l]	Conc. [pg/μl]	Corr. Area	% of Total	Size distribution in CV [%]	Color
378	489	435	808.1	232.09	174.2	32	5.2	Blue

Assay Class: High Sensitivity DNA Assay  
 Data Path: C:\...ents and Settings\Bioanalyzer\2012-08-13\2012-08-13\_003.xad

Created: 8/13/2012 10:39:38 AM  
 Modified: 8/13/2012 11:23:45 AM

**Electropherogram Summary Continued ...**



**Overall Results for sample 7 : Nip-EP-3-BF-1**

Number of peaks found: 14                      Corr. Area 1: 253.9  
 Noise: 0.5

**Peak table for sample 7 : Nip-EP-3-BF-1**

Peak	Size [bp]	Conc. [pg/μl]	Molarity [pmol/l]	Observations
1	35	125.00	5,411.3	Lower Marker
2	47	171.64	5,477.4	
3	75	17.30	347.8	
4	81	20.82	389.6	
5	129	17.81	209.7	
6	387	29.92	117.0	
7	421	199.86	719.3	
8	476	50.40	160.4	
9	491	25.45	78.5	
10	519	38.53	112.5	
11	545	29.36	81.6	
12	713	10.62	22.6	
13	789	9.87	19.0	
14	985	11.80	18.2	
15	1,226	4.53	5.6	
16	10,380	75.00	10.9	Upper Marker

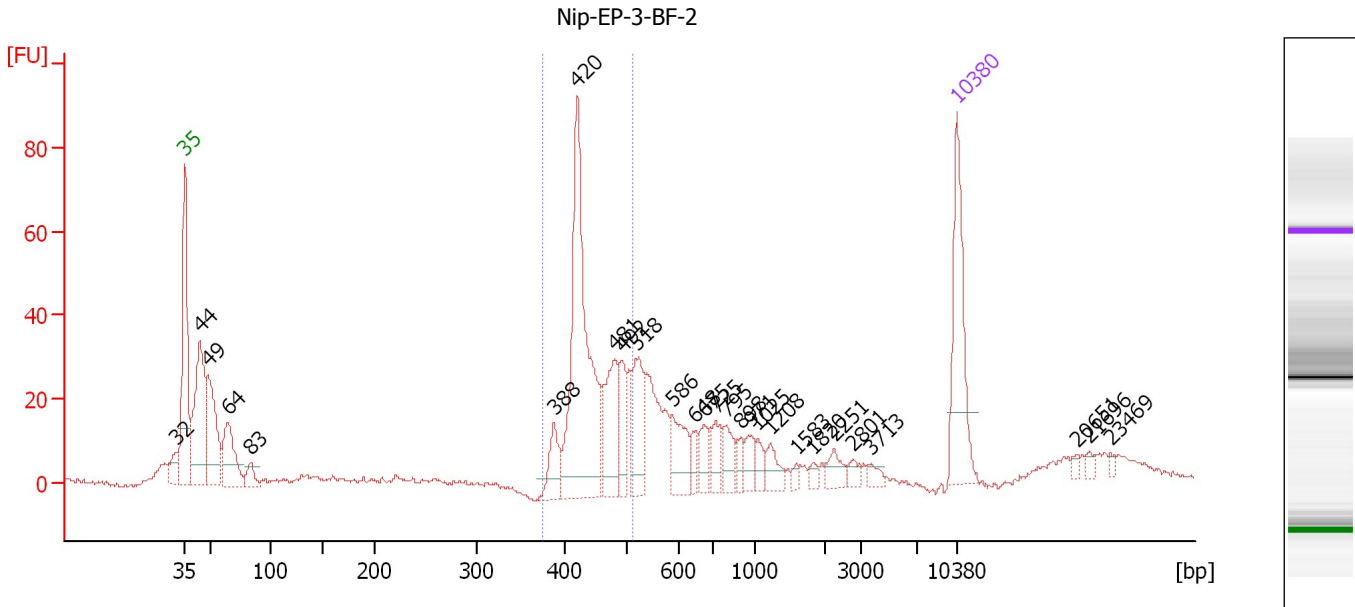
**Region table for sample 7 : Nip-EP-3-BF-1**

From [bp]	To [bp]	Average Size [bp]	Molarity [pmol/l]	Conc. [pg/μl]	Corr. Area	% of Total	Size distribution in CV [%]	Color
376	514	442	1,175.5	341.85	253.9	47	7.6	Blue

Assay Class: High Sensitivity DNA Assay  
 Data Path: C:\...ents and Settings\Bioanalyzer\2012-08-13\2012-08-13\_003.xad

Created: 8/13/2012 10:39:38 AM  
 Modified: 8/13/2012 11:23:45 AM

**Electropherogram Summary Continued ...**



**Overall Results for sample 8 : Nip-EP-3-BF-2**

Number of peaks found: 27                      Corr. Area 1: 279.7  
 Noise: 0.6

**Peak table for sample 8 : Nip-EP-3-BF-2**

Peak	Size [bp]	Conc. [pg/μl]	Molarity [pmol/l]	Observations
1	32	0.00	0.0	
2	35	125.00	5,411.3	Lower Marker
3	44	160.93	5,561.3	
4	49	104.46	3,257.8	
5	64	74.48	1,758.6	
6	83	17.61	321.8	
7	388	31.94	124.8	
8	420	244.40	881.1	
9	481	70.06	220.6	
10	492	35.42	109.0	
11	518	52.63	153.8	
12	586	39.90	103.1	
13	648	13.30	31.1	
14	675	18.31	41.1	
15	725	22.74	47.5	
16	795	20.59	39.3	
17	898	9.44	15.9	
18	971	15.03	23.4	
19	1,025	11.16	16.5	
20	1,208	16.32	20.5	
21	1,583	3.86	3.7	
22	1,820	5.66	4.7	
23	2,251	12.45	8.4	
24	2,801	6.48	3.5	
25	3,713	6.06	2.5	
26	10,380	75.00	10.9	Upper Marker

Assay Class: High Sensitivity DNA Assay  
Data Path: C:\...ents and Settings\Bioanalyzer\2012-08-13\2012-08-13\_003.xad

Created: 8/13/2012 10:39:38 AM  
Modified: 8/13/2012 11:23:45 AM

**Electropherogram Summary Continued ...****... Peak table for sample 8 : Nip-EP-3-BF-2**

Peak	Size [bp]	Conc. [pg/μl]	Molarity [pmol/l]	Observations
27	20,651	0.00	0.0	
28	21,696	0.00	0.0	
29	23,469	0.00	0.0	

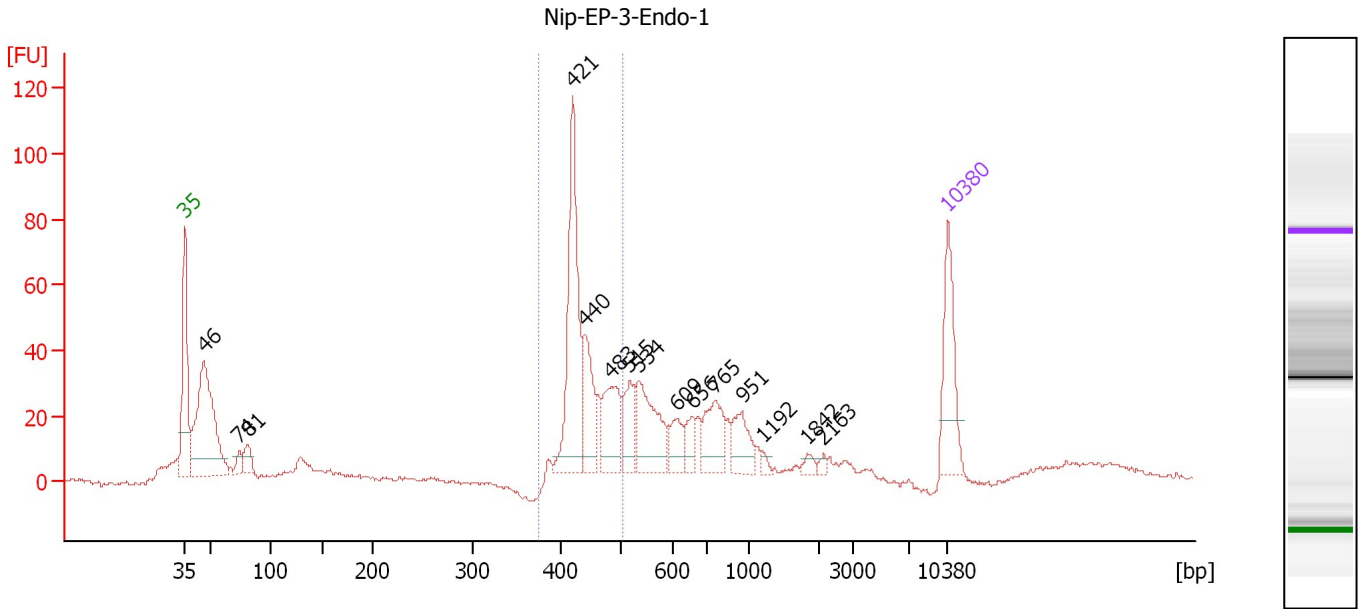
**Region table for sample 8 : Nip-EP-3-BF-2**

From [bp]	To [bp]	Average Size [bp]	Molarity [pmol/l]	Conc. [pg/μl]	Corr. Area	% of Total	Size distribution in CV [%]	Color
376	513	445	1,217.7	356.49	279.7	37	7.6	■

Assay Class: High Sensitivity DNA Assay  
 Data Path: C:\...ents and Settings\Bioanalyzer\2012-08-13\2012-08-13\_003.xad

Created: 8/13/2012 10:39:38 AM  
 Modified: 8/13/2012 11:23:45 AM

**Electropherogram Summary Continued ...**



**Overall Results for sample 9 : Nip-EP-3-Endo-1**

Number of peaks found: 15                      Corr. Area 1: 299.9  
 Noise: 0.7

**Peak table for sample 9 : Nip-EP-3-Endo-1**

Peak	Size [bp]	Conc. [pg/μl]	Molarity [pmol/l]	Observations
1	35	125.00	5,411.3	Lower Marker
2	46	293.19	9,618.2	
3	74	17.30	352.7	
4	81	27.97	521.0	
5	421	211.02	759.7	
6	440	76.42	263.2	
7	483	78.74	247.2	
8	515	45.27	133.1	
9	534	95.64	271.5	
10	609	32.50	80.9	
11	656	24.13	55.7	
12	765	59.95	118.8	
13	951	40.76	64.9	
14	1,192	4.83	6.1	
15	1,842	7.25	6.0	
16	2,163	4.31	3.0	
17	10,380	75.00	10.9	Upper Marker

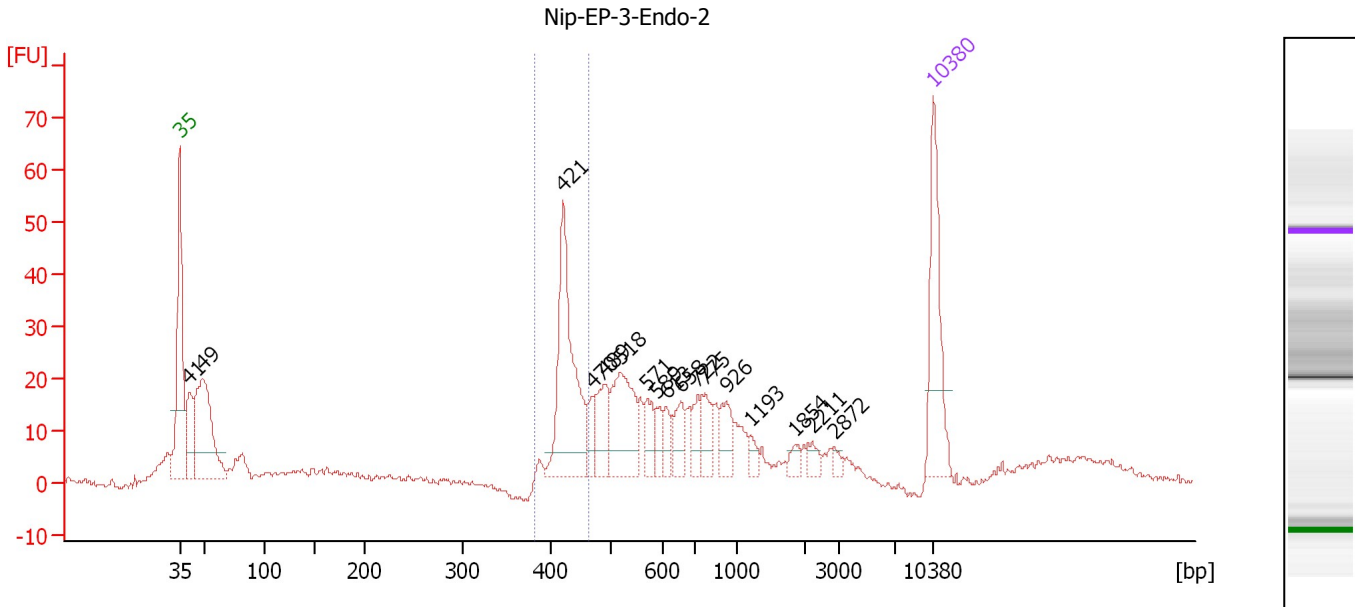
**Region table for sample 9 : Nip-EP-3-Endo-1**

From [bp]	To [bp]	Average Size [bp]	Molarity [pmol/l]	Conc. [pg/μl]	Corr. Area	% of Total	Size distribution in CV [%]	Color
376	501	441	1,429.0	415.11	299.9	32	6.3	Blue

Assay Class: High Sensitivity DNA Assay  
 Data Path: C:\...ents and Settings\Bioanalyzer\2012-08-13\2012-08-13\_003.xad

Created: 8/13/2012 10:39:38 AM  
 Modified: 8/13/2012 11:23:45 AM

**Electropherogram Summary Continued ...**



**Overall Results for sample 10 : Nip-EP-3-Endo-2**

Number of peaks found: 17                      Corr. Area 1: 111.1  
 Noise: 0.7

**Peak table for sample 10 : Nip-EP-3-Endo-2**

Peak	Size [bp]	Conc. [pg/μl]	Molarity [pmol/l]	Observations
1	35	125.00	5,411.3	Lower Marker
2	41	63.84	2,367.8	
3	49	175.35	5,424.4	
4	421	165.89	597.0	
5	470	18.99	61.3	
6	489	43.84	135.8	
7	518	87.75	256.5	
8	571	23.20	61.6	
9	589	16.54	42.5	
10	613	15.61	38.6	
11	658	26.10	60.1	
12	722	20.09	42.2	
13	775	25.32	49.5	
14	926	25.31	41.4	
15	1,193	9.21	11.7	
16	1,854	8.76	7.2	
17	2,211	9.17	6.3	
18	2,872	5.46	2.9	
19	10,380	75.00	10.9	Upper Marker

**Region table for sample 10 : Nip-EP-3-Endo-2**

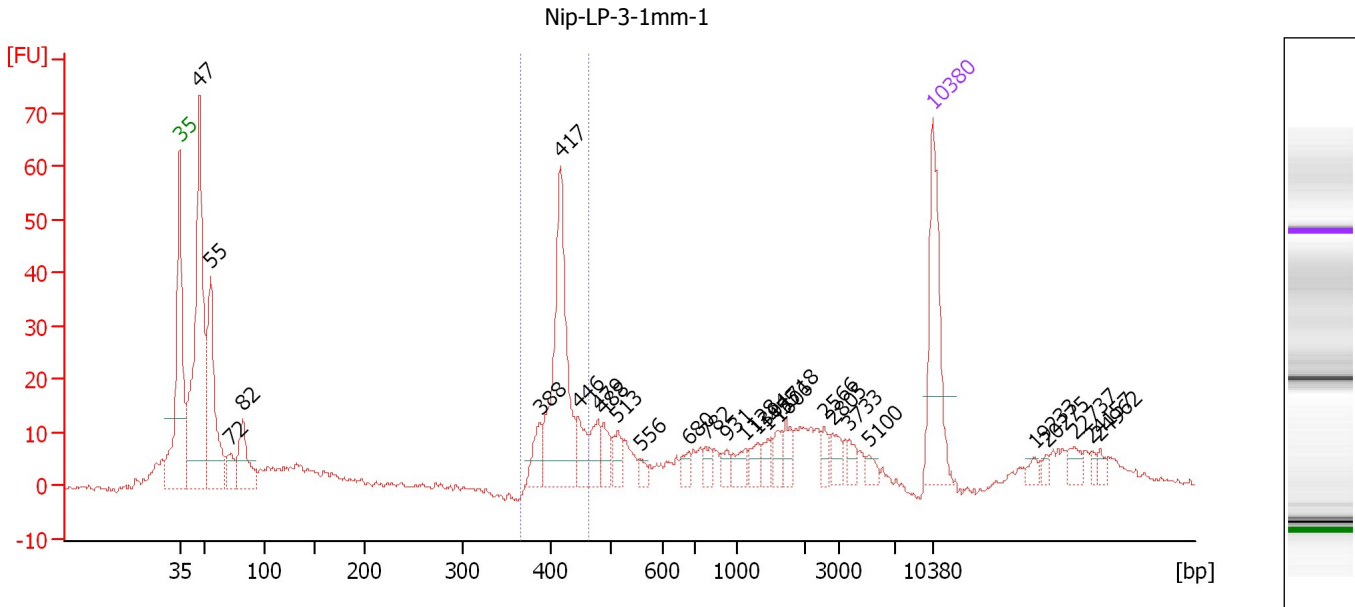
From [bp]	To [bp]	Average Size [bp]	Molarity [pmol/l]	Conc. [pg/μl]	Corr. Area	% of Total	Size distribution in CV [%]	Color
382	462	428	625.6	176.66	111.1	18	3.8	Blue



Assay Class: High Sensitivity DNA Assay  
 Data Path: C:\...ents and Settings\Bioanalyzer\2012-08-13\2012-08-13\_003.xad

Created: 8/13/2012 10:39:38 AM  
 Modified: 8/13/2012 11:23:45 AM

**Electropherogram Summary Continued ...**



**Overall Results for sample 11 : Nip-LP-3-1mm-1**

Number of peaks found: 28                      Corr. Area 1: 136.2  
 Noise: 0.5

**Peak table for sample 11 : Nip-LP-3-1mm-1**

Peak	Size [bp]	Conc. [pg/μl]	Molarity [pmol/l]	Observations
1	35	125.00	5,411.3	Lower Marker
2	47	345.61	11,178.2	
3	55	165.07	4,532.2	
4	72	25.92	545.5	
5	82	64.11	1,184.9	
6	388	23.14	90.3	
7	417	168.16	610.8	
8	446	26.95	91.6	
9	479	23.97	75.8	
10	488	18.47	57.4	
11	513	16.08	47.5	
12	556	6.74	18.4	
13	680	9.86	22.0	
14	782	9.95	19.3	
15	931	8.72	14.2	
16	1,128	12.30	16.5	
17	1,304	11.79	13.7	
18	1,455	8.57	8.9	
19	1,606	10.57	10.0	
20	1,718	13.36	11.8	
21	2,566	9.42	5.6	
22	2,805	11.60	6.3	
23	3,733	8.41	3.4	
24	5,100	6.74	2.0	
25	10,380	75.00	10.9	Upper Marker
26	19,233	0.00	0.0	

Assay Class: High Sensitivity DNA Assay  
Data Path: C:\...ents and Settings\Bioanalyzer\2012-08-13\2012-08-13\_003.xad

Created: 8/13/2012 10:39:38 AM  
Modified: 8/13/2012 11:23:45 AM

**Electropherogram Summary Continued ...****... Peak table for sample 11 : Nip-LP-3-1mm-1**

Peak	Size [bp]	Conc. [pg/ $\mu$ l]	Molarity [pmol/l]	Observations
27	20,275	0.00	0.0	
28	22,737	0.00	0.0	
29	24,157	0.00	0.0	
30	24,962	0.00	0.0	

**Region table for sample 11 : Nip-LP-3-1mm-1**

From [bp]	To [bp]	Average Size [bp]	Molarity [pmol/l]	Conc. [pg/ $\mu$ l]	Corr. Area	% of Total	Size distribution in CV [%]	Color
367	464	417	787.6	216.35	136.2	19	4.7	

Assay Class: High Sensitivity DNA Assay  
Data Path: C:\...ents and Settings\Bioanalyzer\2012-08-13\2012-08-13\_003.xad

Created: 8/13/2012 10:39:38 AM  
Modified: 8/13/2012 11:23:45 AM

**Gel Image**

