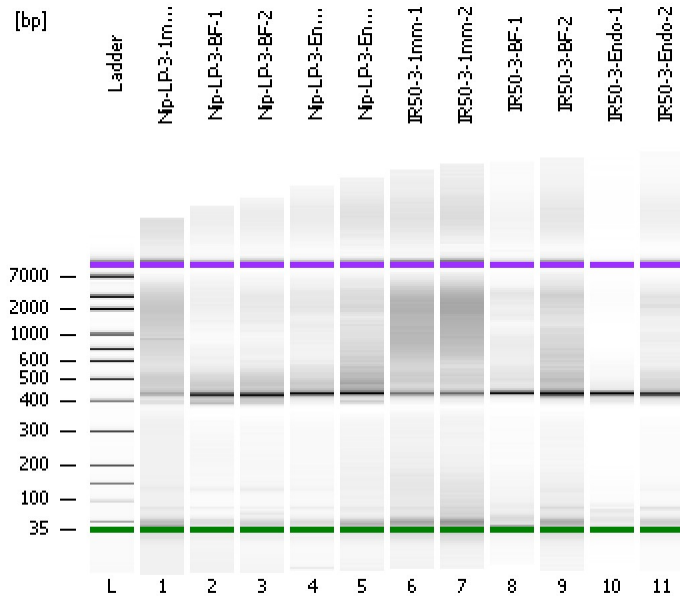


Assay Class: High Sensitivity DNA Assay  
Data Path: C:\...ents and Settings\Bioanalyzer\2012-08-13\2012-08-13\_004.xad

Created: 8/13/2012 11:25:26 AM  
Modified: 8/13/2012 12:07:22 PM

**Electrophoresis File Run Summary**



Instrument Information:

Instrument Name: DE13701086      Firmware: C.01.069  
Serial#: DE13701086      Type: G2938B

Assay Information:

Assay Origin Path: C:\Program Files\Agilent\2100 bioanalyzer\2100 expert\assays\dsDNA\High Sensitivity DNA.xsy  
Assay Class: High Sensitivity DNA Assay  
Version: 1.03  
Assay Comments: Copyright © 2003-2010 Agilent Technologies

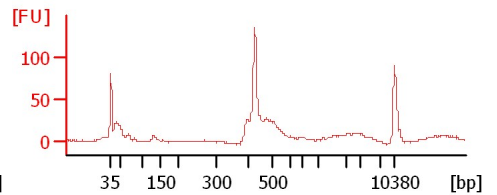
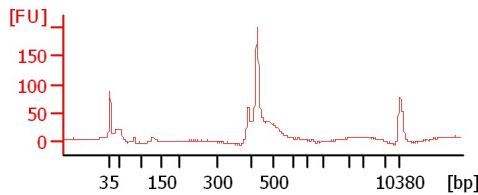
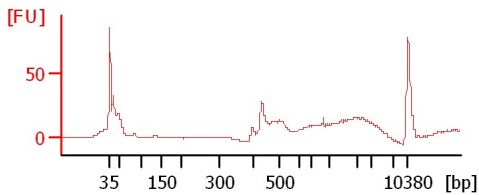
Chip Information:

Chip Lot #:  
Reagent Kit Lot #:  
Chip Comments:

**Nip-LP-3-1mm-2**

**Nip-LP-3-BF-1**

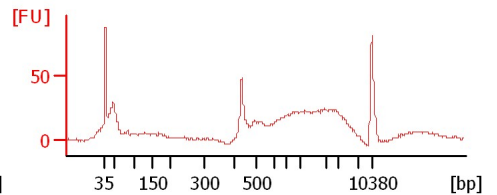
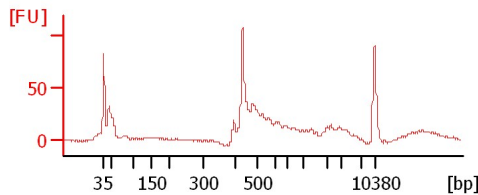
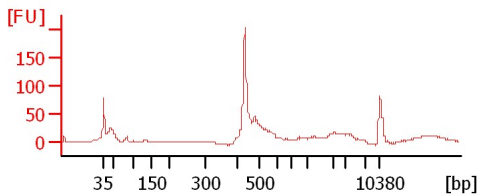
**Nip-LP-3-BF-2**



**Nip-LP-3-Endo-1**

**Nip-LP-3-Endo-2**

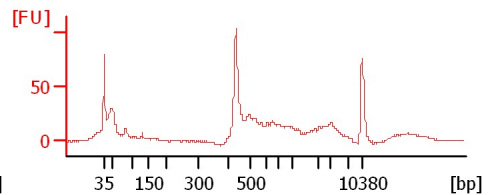
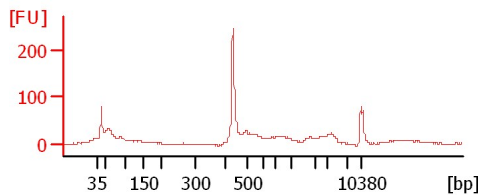
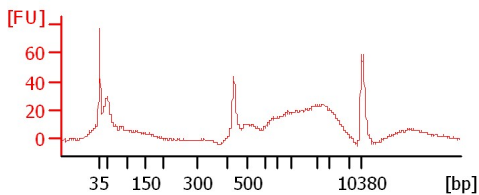
**IR50-3-1mm-1**



**IR50-3-1mm-2**

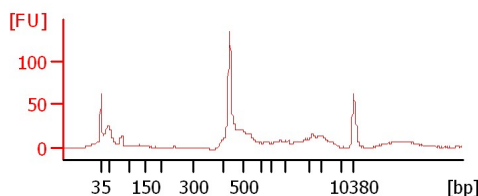
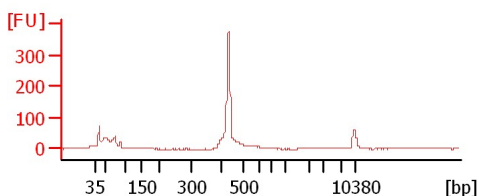
**IR50-3-BF-1**

**IR50-3-BF-2**



**IR50-3-Endo-1**

**IR50-3-Endo-2**



Assay Class: High Sensitivity DNA Assay  
 Data Path: C:\...ents and Settings\Bioanalyzer\2012-08-13\2012-08-13\_004.xad

Created: 8/13/2012 11:25:26 AM  
 Modified: 8/13/2012 12:07:22 PM

**Electrophoresis File Run Summary (Chip Summary)**

Sample Name	Sample Comment	Rest. Digest	Status	Observation	Result Label	Result Color
Nip-LP-3-1mm-2		<input type="checkbox"/>	✓			
Nip-LP-3-BF-1		<input type="checkbox"/>	✓			
Nip-LP-3-BF-2		<input type="checkbox"/>	✓			
Nip-LP-3-Endo-1		<input type="checkbox"/>	✓			
Nip-LP-3-Endo-2		<input type="checkbox"/>	✓			
IR50-3-1mm-1		<input type="checkbox"/>	✓			
IR50-3-1mm-2		<input type="checkbox"/>	✓			
IR50-3-BF-1		<input type="checkbox"/>	✓			
IR50-3-BF-2		<input type="checkbox"/>	✓			
IR50-3-Endo-1		<input type="checkbox"/>	✓			
IR50-3-Endo-2		<input type="checkbox"/>	✓			
Ladder		<input type="checkbox"/>	✓			

**Chip Lot #**

**Reagent Kit Lot #**

**Chip Comments :**

Assay Class: High Sensitivity DNA Assay  
Data Path: C:\...ents and Settings\Bioanalyzer\2012-08-13\2012-08-13\_004.xad

Created: 8/13/2012 11:25:26 AM  
Modified: 8/13/2012 12:07:22 PM

**Electrophoresis Assay Details**

**General Analysis Settings**

Number of Available Sample and Ladder Wells (Max.) : 12  
Minimum Visible Range [s] : 32  
Maximum Visible Range [s] : 138  
Start Analysis Time Range [s] : 33  
End Analysis Time Range [s] : 137.5  
Ladder Concentration [pg/μl] : 1950  
Uses Standard Area for Ladder Fragments  
Lower Marker Concentration [pg/μl] : 125  
Upper Marker Concentration [pg/μl] : 75  
Used Upper Marker for Quantitation  
Standard Curve Fit is Point to Point  
Show Data Aligned to Lower and Upper Marker

**Integrator Settings**

Integration Start Time [s] : 33.05  
Integration End Time [s] : 137  
Slope Threshold : 0.8  
Height Threshold [FU] : 5  
Area Threshold : 0.1  
Width Threshold [s] : 0.6  
Baseline Plateau [s] : 0.5

**Filter Settings**

Filter Width [s] : 0.5  
Polynomial Order : 4

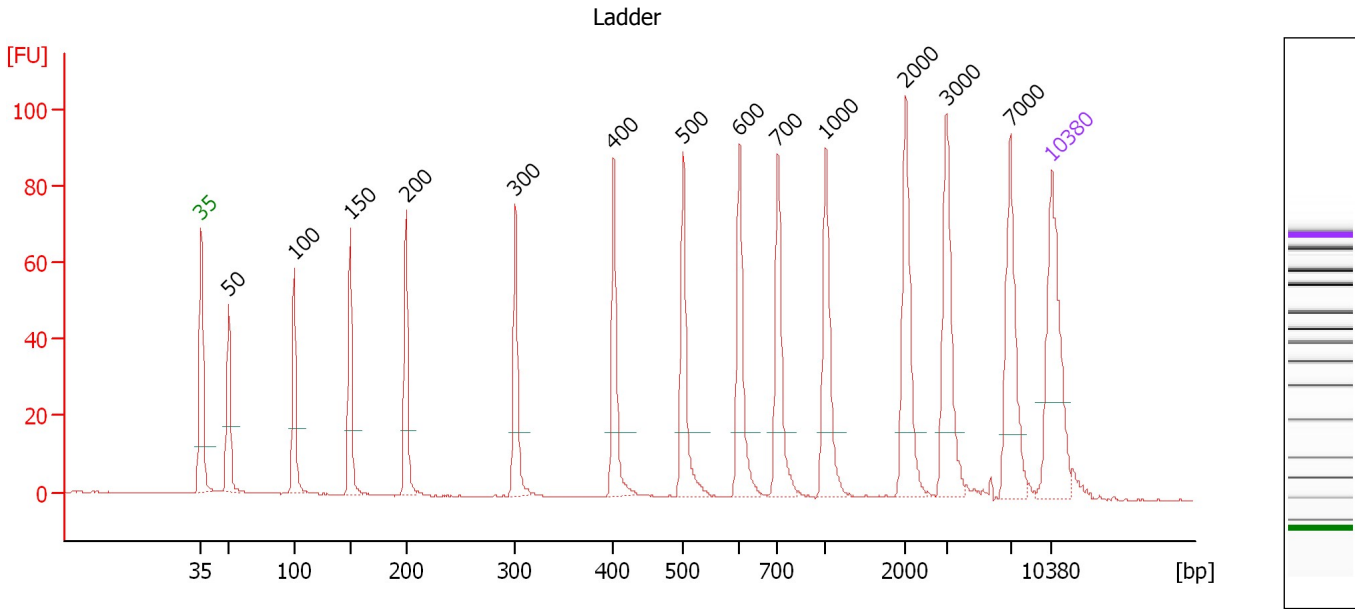
**Ladder**

Ladder Peak	Size	Area
1	35	160
2	50	210
3	100	208
4	150	221
5	200	242
6	300	270
7	400	305
8	500	306
9	600	336
10	700	321
11	1000	366
12	2000	413
13	3000	411
14	7000	400
15	10380	214

Assay Class: High Sensitivity DNA Assay  
 Data Path: C:\...ents and Settings\Bioanalyzer\2012-08-13\2012-08-13\_004.xad

Created: 8/13/2012 11:25:26 AM  
 Modified: 8/13/2012 12:07:22 PM

**Electropherogram Summary**



**Overall Results for Ladder**

Noise: 0.1

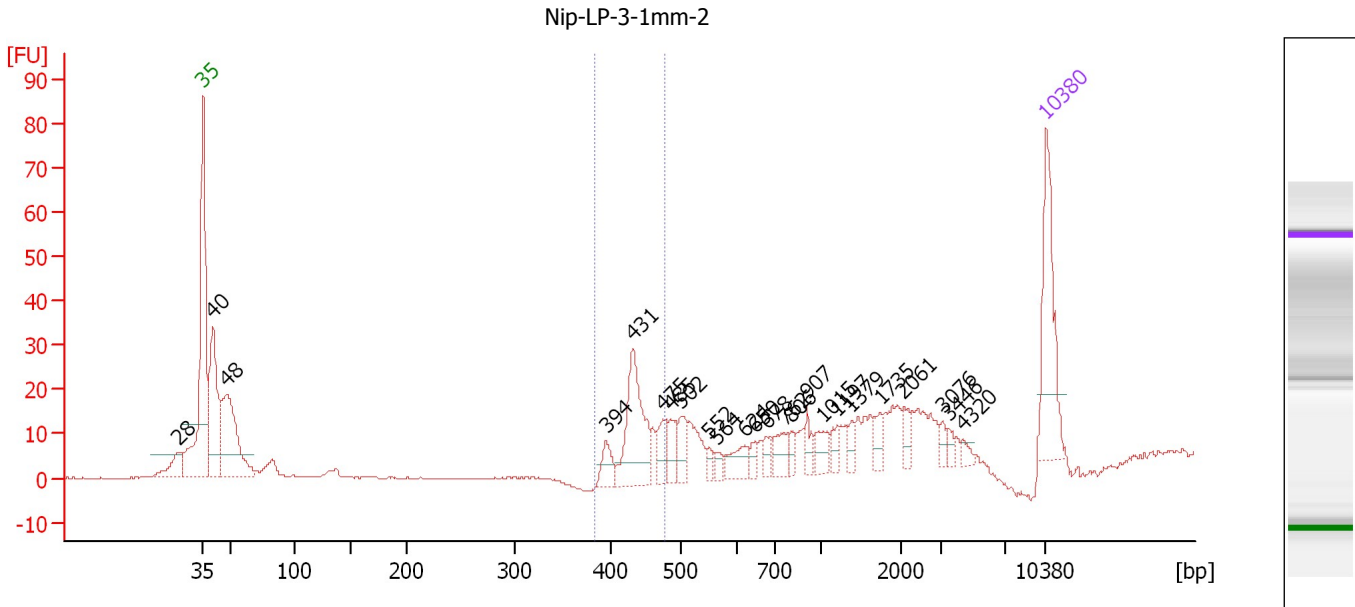
**Peak table for Ladder**

Peak	Size [bp]	Conc. [pg/μl]	Molarity [pmol/l]	Observations
1	35	125.00	5,411.3	Lower Marker
2	50	150.00	4,545.5	Ladder Peak
3	100	150.00	2,272.7	Ladder Peak
4	150	150.00	1,515.2	Ladder Peak
5	200	150.00	1,136.4	Ladder Peak
6	300	150.00	757.6	Ladder Peak
7	400	150.00	568.2	Ladder Peak
8	500	150.00	454.5	Ladder Peak
9	600	150.00	378.8	Ladder Peak
10	700	150.00	324.7	Ladder Peak
11	1,000	150.00	227.3	Ladder Peak
12	2,000	150.00	113.6	Ladder Peak
13	3,000	150.00	75.8	Ladder Peak
14	7,000	150.00	32.5	Ladder Peak
15	10,380	75.00	10.9	Upper Marker

Assay Class: High Sensitivity DNA Assay  
 Data Path: C:\...ents and Settings\Bioanalyzer\2012-08-13\2012-08-13\_004.xad

Created: 8/13/2012 11:25:26 AM  
 Modified: 8/13/2012 12:07:22 PM

**Electropherogram Summary Continued ...**



**Overall Results for sample 1 : Nip-LP-3-1mm-2**

Number of peaks found: 24                      Corr. Area 1: 65.9  
 Noise: 0.1

**Peak table for sample 1 : Nip-LP-3-1mm-2**

Peak	Size [bp]	Conc. [pg/μl]	Molarity [pmol/l]	Observations
1	28	0.00	0.0	
2	35	125.00	5,411.3	Lower Marker
3	40	145.88	5,479.0	
4	48	143.16	4,486.1	
5	394	21.29	81.8	
6	431	94.99	334.0	
7	475	23.05	73.5	
8	485	22.42	70.0	
9	502	22.61	68.3	
10	552	7.70	21.1	
11	564	7.45	20.0	
12	624	20.52	49.8	
13	650	7.95	18.5	
14	678	10.40	23.2	
15	762	17.91	35.6	
16	806	9.35	17.6	
17	907	12.44	20.8	
18	1,015	16.70	24.9	
19	1,197	10.59	13.4	
20	1,379	8.88	9.8	
21	1,735	11.28	9.9	
22	2,061	10.27	7.6	
23	3,076	6.06	3.0	
24	3,446	6.01	2.6	
25	4,320	5.49	1.9	
26	10,380	75.00	10.9	Upper Marker

Assay Class: High Sensitivity DNA Assay  
Data Path: C:\...ents and Settings\Bioanalyzer\2012-08-13\2012-08-13\_004.xad

Created: 8/13/2012 11:25:26 AM  
Modified: 8/13/2012 12:07:22 PM

**Electropherogram Summary Continued ...**

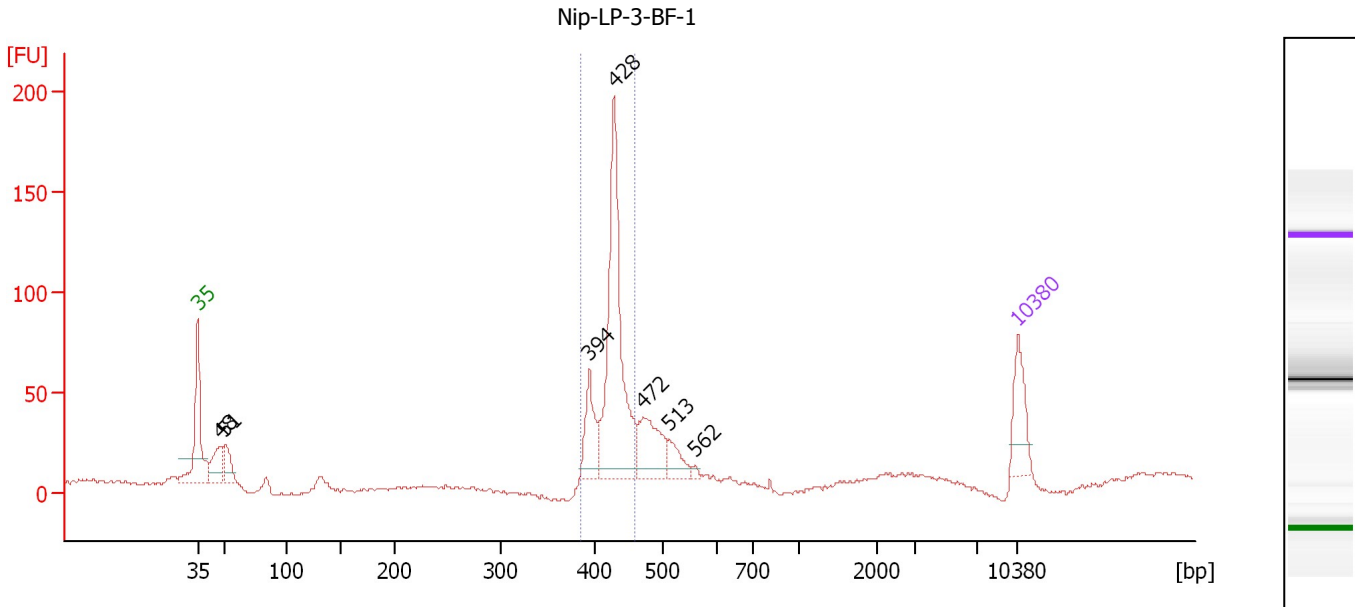
... Region table for sample 1 : Nip-LP-3-1mm-2

From [bp]	To [bp]	Average Size [bp]	Molarity [pmol/l]	Conc. [pg/μl]	Corr. Area	% of Total	Size distribution in CV [%]	Color
384	479	439	344.1	99.66	65.9	15	4.7	■

Assay Class: High Sensitivity DNA Assay  
 Data Path: C:\...ents and Settings\Bioanalyzer\2012-08-13\2012-08-13\_004.xad

Created: 8/13/2012 11:25:26 AM  
 Modified: 8/13/2012 12:07:22 PM

**Electropherogram Summary Continued ...**



**Overall Results for sample 2 : Nip-LP-3-BF-1**

Number of peaks found: 7                      Corr. Area 1: 366.5  
 Noise: 0.9

**Peak table for sample 2 : Nip-LP-3-BF-1**

Peak	Size [bp]	Conc. [pg/μl]	Molarity [pmol/l]	Observations
1	35	125.00	5,411.3	Lower Marker
2	48	90.86	2,861.1	
3	51	62.34	1,845.2	
4	394	105.36	405.0	
5	428	479.28	1,695.0	
6	472	130.75	419.5	
7	513	47.69	140.9	
8	562	6.87	18.5	
9	10,380	75.00	10.9	Upper Marker

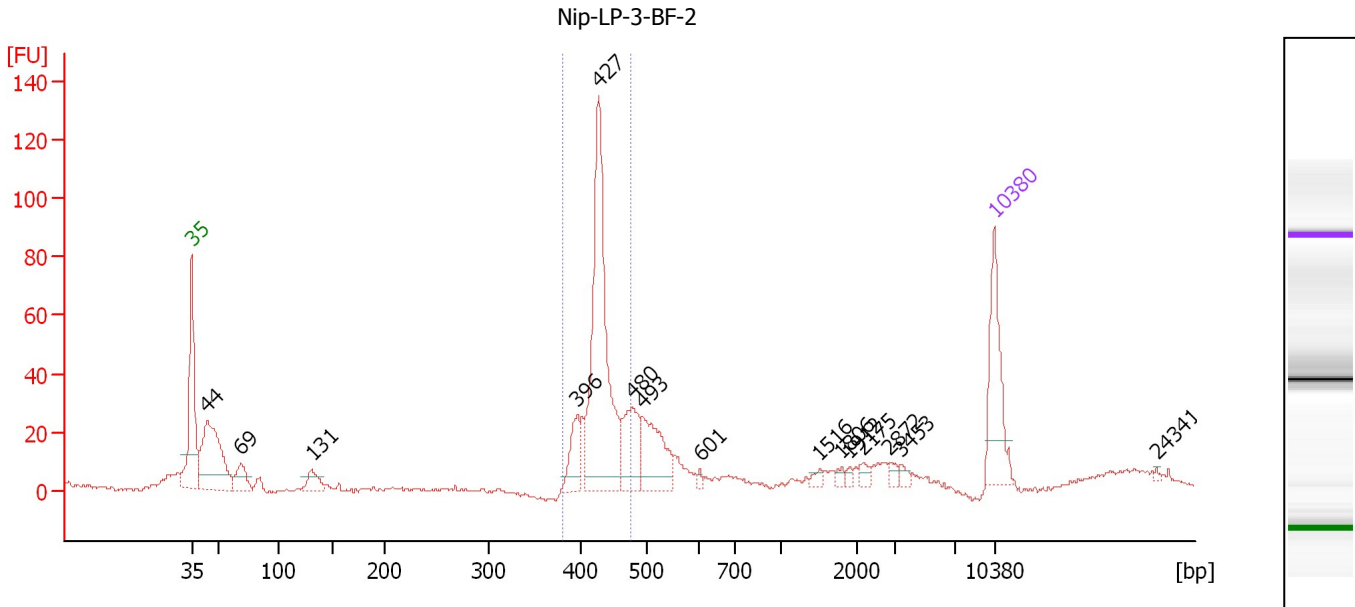
**Region table for sample 2 : Nip-LP-3-BF-1**

From [bp]	To [bp]	Average Size [bp]	Molarity [pmol/l]	Conc. [pg/μl]	Corr. Area	% of Total	Size distribution in CV [%]	Color
384	459	424	2,030.9	567.48	366.5	64	4.0	Blue

Assay Class: High Sensitivity DNA Assay  
 Data Path: C:\...ents and Settings\Bioanalyzer\2012-08-13\2012-08-13\_004.xad

Created: 8/13/2012 11:25:26 AM  
 Modified: 8/13/2012 12:07:22 PM

**Electropherogram Summary Continued ...**



**Overall Results for sample 3 : Nip-LP-3-BF-2**

Number of peaks found: 15                      Corr. Area 1: 299.6  
 Noise: 0.8

**Peak table for sample 3 : Nip-LP-3-BF-2**

Peak	Size [bp]	Conc. [pg/μl]	Molarity [pmol/l]	Observations
1	35	125.00	5,411.3	Lower Marker
2	44	204.14	7,023.2	
3	69	40.48	890.0	
4	131	31.38	363.8	
5	396	44.83	171.4	
6	427	306.72	1,087.3	
7	480	75.23	237.7	
8	493	87.60	269.0	
9	601	4.39	11.1	
10	1,516	6.52	6.5	
11	1,806	4.88	4.1	
12	1,912	4.02	3.2	
13	2,175	7.63	5.3	
14	2,872	6.26	3.3	
15	3,453	5.66	2.5	
16	10,380	75.00	10.9	Upper Marker
17	24,341	0.00	0.0	

**Region table for sample 3 : Nip-LP-3-BF-2**

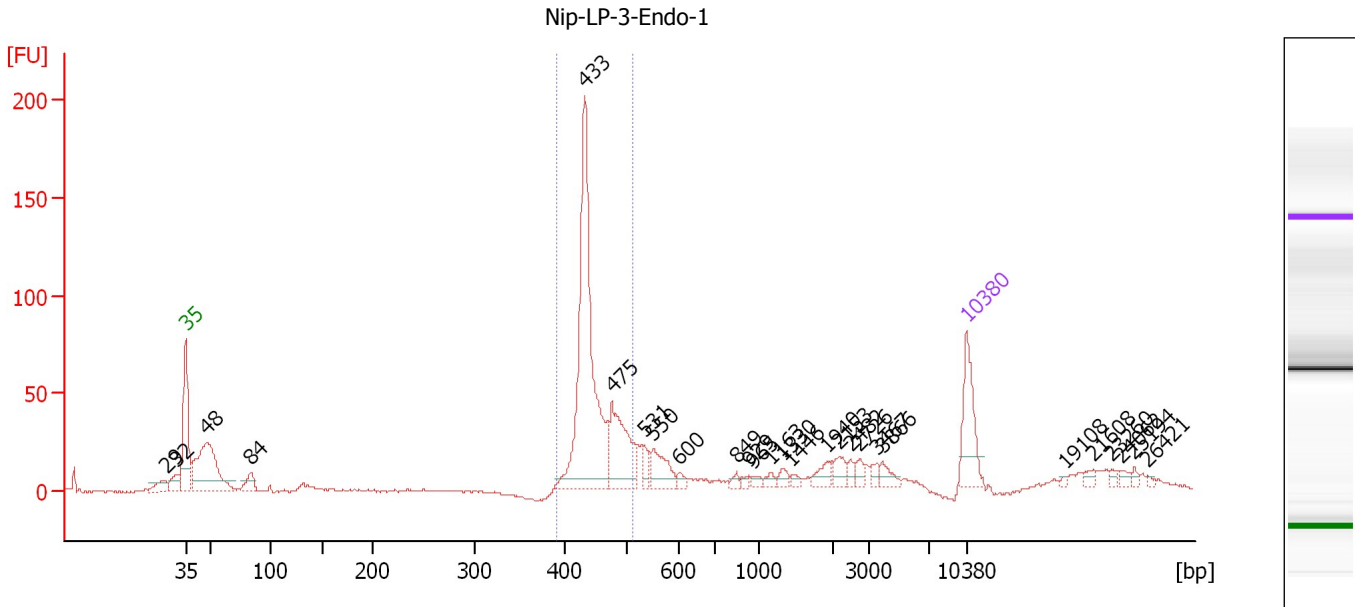
From [bp]	To [bp]	Average Size [bp]	Molarity [pmol/l]	Conc. [pg/μl]	Corr. Area	% of Total	Size distribution in CV [%]	Color
381	476	429	1,353.9	383.10	299.6	45	4.7	Blue



Assay Class: High Sensitivity DNA Assay  
 Data Path: C:\...ents and Settings\Bioanalyzer\2012-08-13\2012-08-13\_004.xad

Created: 8/13/2012 11:25:26 AM  
 Modified: 8/13/2012 12:07:22 PM

**Electropherogram Summary Continued ...**



**Overall Results for sample 4 : Nip-LP-3-Endo-1**

Number of peaks found: 27                      Corr. Area 1: 372.3  
 Noise: 0.6

**Peak table for sample 4 : Nip-LP-3-Endo-1**

Peak	Size [bp]	Conc. [pg/μl]	Molarity [pmol/l]	Observations
1	29	0.00	0.0	
2	32	0.00	0.0	
3	35	125.00	5,411.3	Lower Marker
4	48	251.09	7,904.5	
5	84	31.17	564.2	
6	433	481.42	1,685.9	
7	475	142.60	454.5	
8	531	22.94	65.4	
9	550	53.53	147.5	
10	600	10.37	26.2	
11	849	6.93	12.4	
12	929	6.03	9.8	
13	965	7.35	11.5	
14	1,163	8.75	11.4	
15	1,330	10.81	12.3	
16	1,446	6.75	7.1	
17	1,940	19.28	15.1	
18	2,153	17.28	12.2	
19	2,482	9.11	5.6	
20	2,726	11.63	6.5	
21	3,467	10.22	4.5	
22	3,866	15.84	6.2	
23	10,380	75.00	10.9	Upper Marker
24	19,108	0.00	0.0	
25	21,608	0.00	0.0	
26	23,260	0.00	0.0	


Assay Class: High Sensitivity DNA Assay  
Data Path: C:\...ents and Settings\Bioanalyzer\2012-08-13\2012-08-13\_004.xad

Created: 8/13/2012 11:25:26 AM  
Modified: 8/13/2012 12:07:22 PM

**Electropherogram Summary Continued ...****... Peak table for sample 4 : Nip-LP-3-Endo-1**

Peak	Size [bp]	Conc. [pg/μl]	Molarity [pmol/l]	Observations
27	24,062	0.00	0.0	
28	25,194	0.00	0.0	
29	26,421	0.00	0.0	

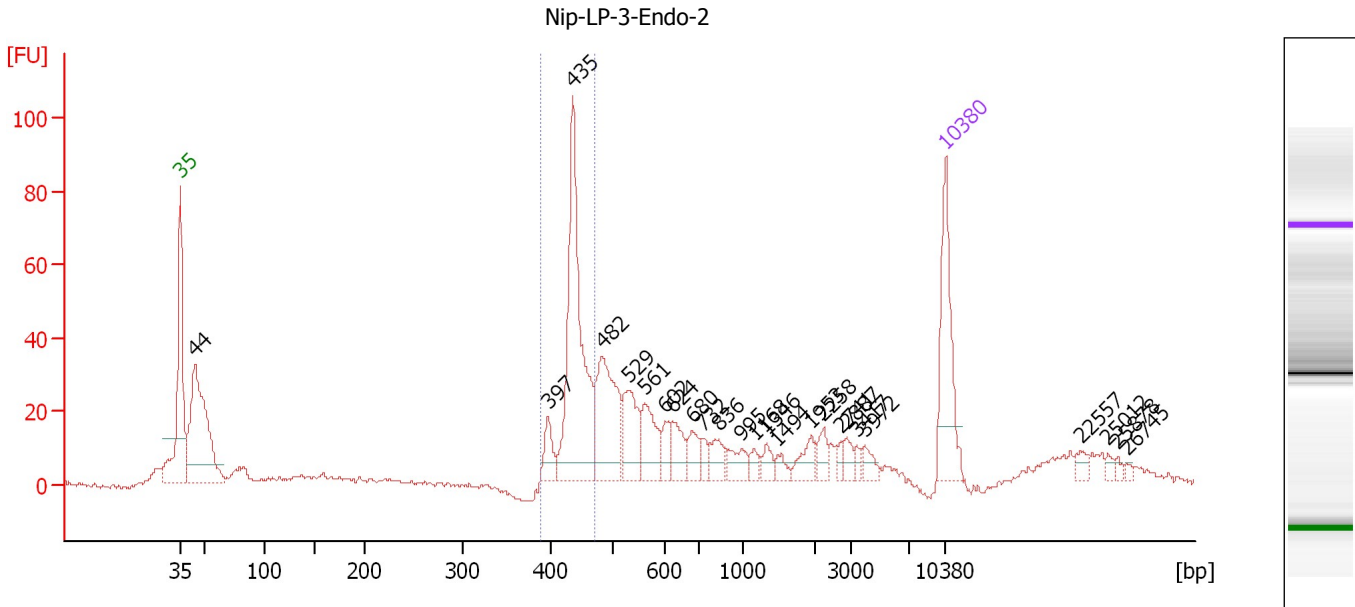
**Region table for sample 4 : Nip-LP-3-Endo-1**

From [bp]	To [bp]	Average Size [bp]	Molarity [pmol/l]	Conc. [pg/μl]	Corr. Area	% of Total	Size distribution in CV [%]	Color
392	510	447	1,799.2	530.22	372.3	62	5.3	

Assay Class: High Sensitivity DNA Assay  
 Data Path: C:\...ents and Settings\Bioanalyzer\2012-08-13\2012-08-13\_004.xad

Created: 8/13/2012 11:25:26 AM  
 Modified: 8/13/2012 12:07:22 PM

**Electropherogram Summary Continued ...**



**Overall Results for sample 5 : Nip-LP-3-Endo-2**

Number of peaks found: 25                      Corr. Area 1: 203.6  
 Noise: 0.7

**Peak table for sample 5 : Nip-LP-3-Endo-2**

Peak	Size [bp]	Conc. [pg/μl]	Molarity [pmol/l]	Observations
1	35	125.00	5,411.3	Lower Marker
2	44	235.53	8,083.5	
3	397	25.43	97.0	
4	435	226.74	789.6	
5	482	112.01	352.0	
6	529	55.81	159.8	
7	561	45.49	122.9	
8	602	17.93	45.1	
9	624	24.68	59.9	
10	680	20.84	46.5	
11	732	9.20	19.0	
12	836	19.22	34.8	
13	995	17.67	26.9	
14	1,168	8.60	11.1	
15	1,346	10.24	11.5	
16	1,494	8.07	8.2	
17	1,953	16.58	12.9	
18	2,258	12.10	8.1	
19	2,741	5.94	3.3	
20	2,887	9.41	4.9	
21	3,417	5.23	2.3	
22	3,972	9.83	3.7	
23	10,380	75.00	10.9	Upper Marker
24	22,557	0.00	0.0	
25	25,012	0.00	0.0	
26	25,878	0.00	0.0	


Assay Class: High Sensitivity DNA Assay  
Data Path: C:\...ents and Settings\Bioanalyzer\2012-08-13\2012-08-13\_004.xad

Created: 8/13/2012 11:25:26 AM  
Modified: 8/13/2012 12:07:22 PM

**Electropherogram Summary Continued ...****... Peak table for sample 5 : Nip-LP-3-Endo-2**

Peak	Size [bp]	Conc. [pg/ $\mu$ l]	Molarity [pmol/l]	Observations
27	26,745	0.00	0.0	

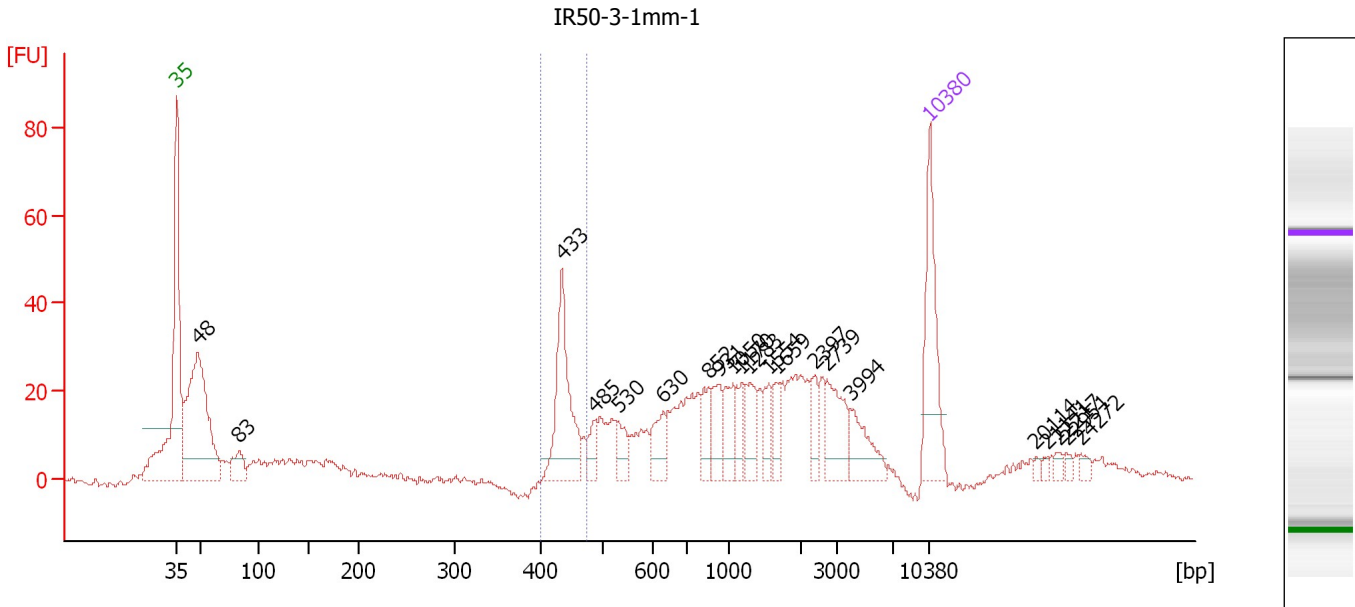
**Region table for sample 5 : Nip-LP-3-Endo-2**

From [bp]	To [bp]	Average Size [bp]	Molarity [pmol/l]	Conc. [pg/ $\mu$ l]	Corr. Area	% of Total	Size distribution in CV [%]	Color
389	468	435	885.1	254.06	203.6	24	4.0	

Assay Class: High Sensitivity DNA Assay  
 Data Path: C:\...ents and Settings\Bioanalyzer\2012-08-13\2012-08-13\_004.xad

Created: 8/13/2012 11:25:26 AM  
 Modified: 8/13/2012 12:07:22 PM

**Electropherogram Summary Continued ...**



**Overall Results for sample 6 : IR50-3-1mm-1**

Number of peaks found: 21                      Corr. Area 1: 86.4  
 Noise: 0.7

**Peak table for sample 6 : IR50-3-1mm-1**

Peak	Size [bp]	Conc. [pg/μl]	Molarity [pmol/l]	Observations
1	35	125.00	5,411.3	Lower Marker
2	48	286.14	8,979.8	
3	83	31.84	581.5	
4	433	114.26	399.6	
5	485	20.01	62.5	
6	530	21.82	62.4	
7	630	30.47	73.3	
8	852	24.43	43.5	
9	931	29.59	48.2	
10	1,050	28.04	40.5	
11	1,170	19.01	24.6	
12	1,283	28.49	33.6	
13	1,554	18.53	18.1	
14	1,659	15.33	14.0	
15	2,397	18.32	11.6	
16	2,739	40.85	22.6	
17	3,994	33.33	12.6	
18	10,380	75.00	10.9	Upper Marker
19	20,114	0.00	0.0	
20	21,141	0.00	0.0	
21	22,217	0.00	0.0	
22	22,951	0.00	0.0	
23	24,272	0.00	0.0	

Assay Class: High Sensitivity DNA Assay  
Data Path: C:\...ents and Settings\Bioanalyzer\2012-08-13\2012-08-13\_004.xad

Created: 8/13/2012 11:25:26 AM  
Modified: 8/13/2012 12:07:22 PM

**Electropherogram Summary Continued ...**

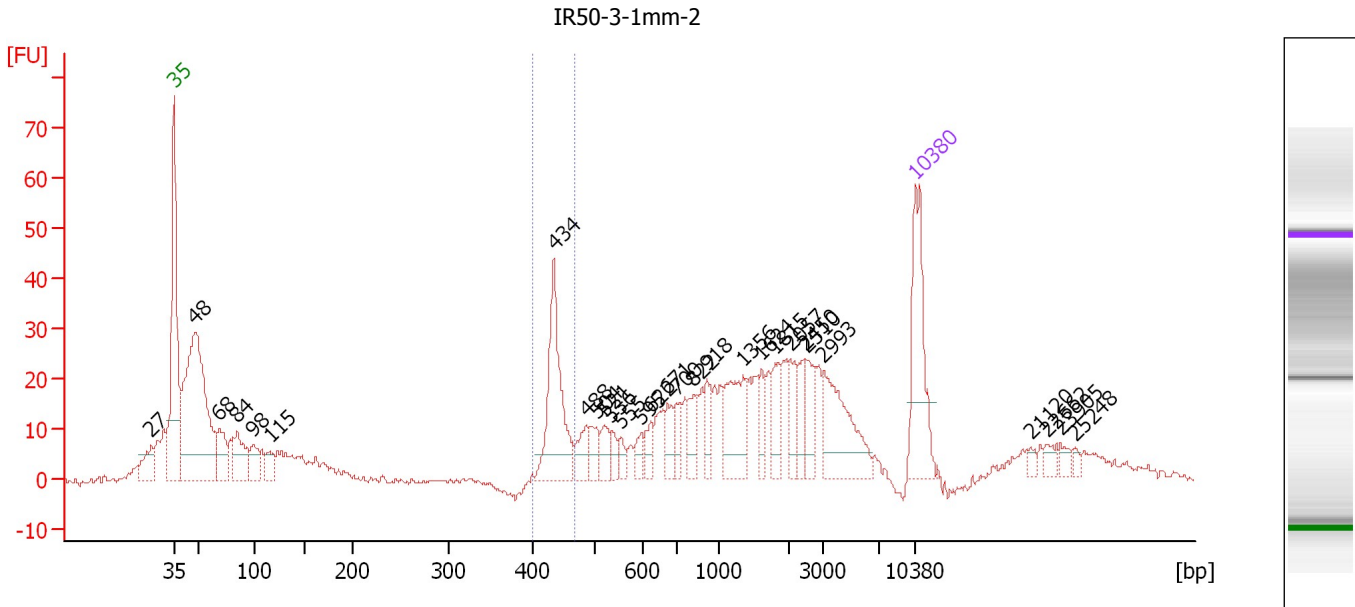
... Region table for sample 6 : IR50-3-1mm-1

From [bp]	To [bp]	Average Size [bp]	Molarity [pmol/l]	Conc. [pg/μl]	Corr. Area	% of Total	Size distribution in CV [%]	Color
400	473	438	410.1	118.64	86.4	10	3.2	■

Assay Class: High Sensitivity DNA Assay  
 Data Path: C:\...ents and Settings\Bioanalyzer\2012-08-13\2012-08-13\_004.xad

Created: 8/13/2012 11:25:26 AM  
 Modified: 8/13/2012 12:07:22 PM

**Electropherogram Summary Continued ...**



**Overall Results for sample 7 : IR50-3-1mm-2**

Number of peaks found: 29                      Corr. Area 1: 75.8  
 Noise: 0.5

**Peak table for sample 7 : IR50-3-1mm-2**

Peak	Size [bp]	Conc. [pg/μl]	Molarity [pmol/l]	Observations
1	27	0.00	0.0	
2	35	125.00	5,411.3	Lower Marker
3	48	355.03	11,168.9	
4	68	47.50	1,051.5	
5	84	53.20	956.0	
6	98	28.92	445.7	
7	115	19.34	255.0	
8	434	116.50	406.9	
9	488	25.51	79.3	
10	504	18.55	55.7	
11	521	18.11	52.7	
12	536	10.52	29.8	
13	555	9.88	27.0	
14	595	11.66	29.7	
15	622	15.53	37.8	
16	671	21.61	48.8	
17	700	17.57	38.0	
18	822	24.38	44.9	
19	918	17.85	29.5	
20	1,356	55.43	61.9	
21	1,624	16.89	15.8	
22	1,815	23.05	19.2	
23	2,057	22.93	16.9	
24	2,450	20.06	12.4	
25	2,510	25.03	15.1	
26	2,993	69.28	35.1	

Assay Class: High Sensitivity DNA Assay  
 Data Path: C:\...ents and Settings\Bioanalyzer\2012-08-13\2012-08-13\_004.xad


Created: 8/13/2012 11:25:26 AM  
 Modified: 8/13/2012 12:07:22 PM

### Electropherogram Summary Continued ...

#### ... Peak table for sample 7 : IR50-3-1mm-2

Peak	Size [bp]	Conc. [pg/μl]	Molarity [pmol/l]	Observations
27	10,380	75.00	10.9	Upper Marker
28	21,120	0.00	0.0	
29	22,662	0.00	0.0	
30	23,905	0.00	0.0	
31	25,248	0.00	0.0	

#### Region table for sample 7 : IR50-3-1mm-2

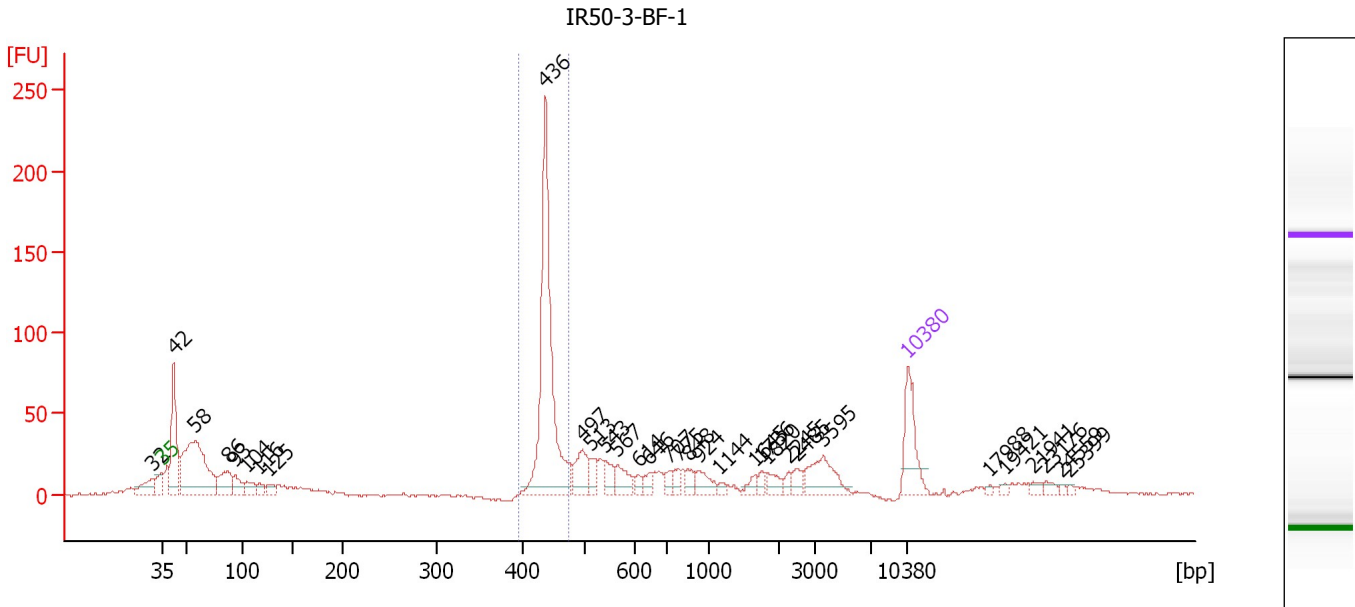
From [bp]	To [bp]	Average Size [bp]	Molarity [pmol/l]	Conc. [pg/μl]	Corr. Area	% of Total	Size distribution in CV [%]	Color
398	468	437	413.2	119.09	75.8	8	2.9	



Assay Class: High Sensitivity DNA Assay  
 Data Path: C:\...ents and Settings\Bioanalyzer\2012-08-13\2012-08-13\_004.xad

Created: 8/13/2012 11:25:26 AM  
 Modified: 8/13/2012 12:07:22 PM

**Electropherogram Summary Continued ...**



**Overall Results for sample 8 : IR50-3-BF-1**

Number of peaks found: 32                      Corr. Area 1: 337.2  
 Noise: 0.7

**Peak table for sample 8 : IR50-3-BF-1**

Peak	Size [bp]	Conc. [pg/μl]	Molarity [pmol/l]	Observations
1	32	0.00	0.0	
2	35	125.00	5,411.3	Lower Marker
3	42	217.06	7,760.9	
4	58	362.16	9,460.4	
5	86	77.89	1,367.9	
6	93	39.66	647.8	
7	104	27.93	406.8	
8	116	19.51	254.9	
9	125	18.41	222.8	
10	436	458.43	1,593.3	
11	497	57.74	175.9	
12	513	26.32	77.7	
13	543	26.00	72.5	
14	567	35.31	94.4	
15	614	12.58	31.0	
16	646	15.25	35.8	
17	707	12.81	27.5	
18	775	17.24	33.7	
19	848	18.23	32.6	
20	924	26.65	43.7	
21	1,144	7.06	9.4	
22	1,645	11.51	10.6	
23	1,736	8.94	7.8	
24	1,820	19.32	16.1	
25	2,245	8.27	5.6	
26	2,485	15.85	9.7	

Assay Class: High Sensitivity DNA Assay  
 Data Path: C:\...ents and Settings\Bioanalyzer\2012-08-13\2012-08-13\_004.xad


Created: 8/13/2012 11:25:26 AM  
 Modified: 8/13/2012 12:07:22 PM

### Electropherogram Summary Continued ...

#### ... Peak table for sample 8 : IR50-3-BF-1

Peak	Size [bp]	Conc. [pg/μl]	Molarity [pmol/l]	Observations
27	3,595	61.00	25.7	
28	10,380	75.00	10.9	Upper Marker
29	17,988	0.00	0.0	
30	19,421	0.00	0.0	
31	21,941	0.00	0.0	
32	23,176	0.00	0.0	
33	24,559	0.00	0.0	
34	25,399	0.00	0.0	

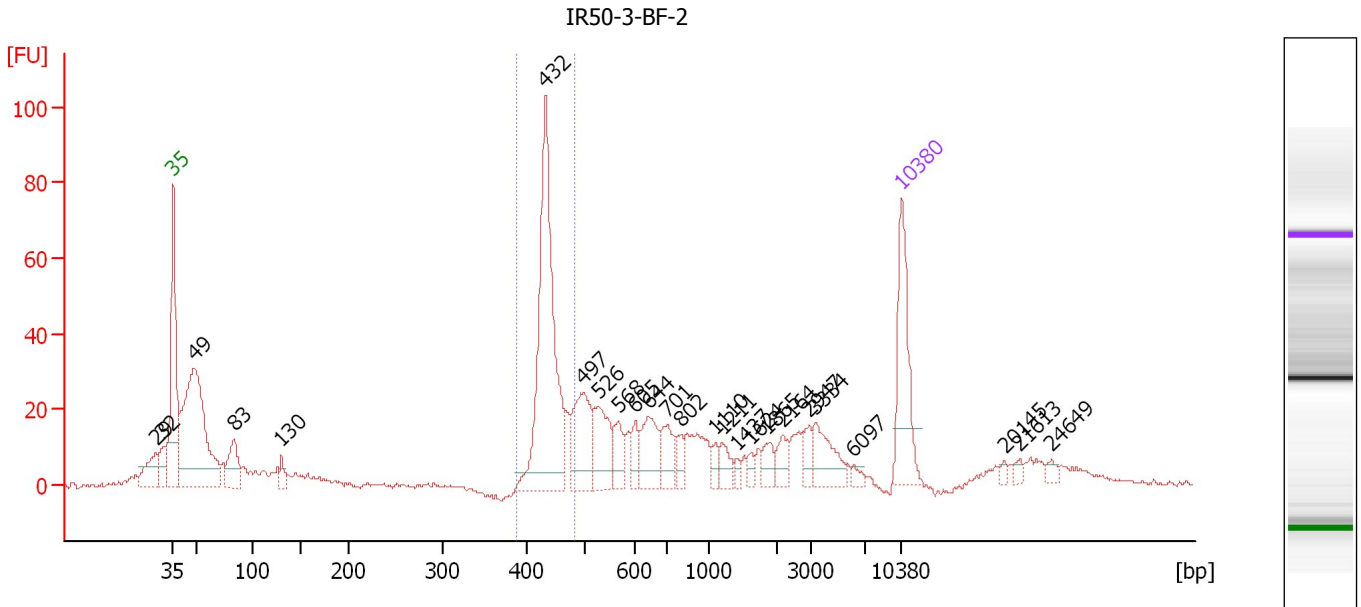
#### Region table for sample 8 : IR50-3-BF-1

From [bp]	To [bp]	Average Size [bp]	Molarity [pmol/l]	Conc. [pg/μl]	Corr. Area	% of Total	Size distribution in CV [%]	Color
394	474	439	1,552.3	449.79	337.2	26	2.7	

Assay Class: High Sensitivity DNA Assay  
 Data Path: C:\...ents and Settings\Bioanalyzer\2012-08-13\2012-08-13\_004.xad

Created: 8/13/2012 11:25:26 AM  
 Modified: 8/13/2012 12:07:22 PM

**Electropherogram Summary Continued ...**



**Overall Results for sample 9 : IR50-3-BF-2**

Number of peaks found: 25                      Corr. Area 1: 215.2  
 Noise: 0.6

**Peak table for sample 9 : IR50-3-BF-2**

Peak	Size [bp]	Conc. [pg/μl]	Molarity [pmol/l]	Observations
1	29	0.00	0.0	
2	32	0.00	0.0	
3	35	125.00	5,411.3	Lower Marker
4	49	337.90	10,431.1	
5	83	56.39	1,024.7	
6	130	14.64	170.6	
7	432	287.73	1,008.4	
8	497	80.79	246.3	
9	526	58.90	169.6	
10	568	27.70	73.9	
11	605	18.10	45.3	
12	644	48.00	113.0	
13	701	29.07	62.9	
14	802	14.45	27.3	
15	1,110	9.71	13.3	
16	1,211	15.08	18.9	
17	1,437	5.47	5.8	
18	1,624	6.76	6.3	
19	1,865	13.79	11.2	
20	2,164	15.58	10.9	
21	2,947	13.81	7.1	
22	3,334	35.90	16.3	
23	6,097	5.35	1.3	
24	10,380	75.00	10.9	Upper Marker
25	20,145	0.00	0.0	
26	21,613	0.00	0.0	


Assay Class: High Sensitivity DNA Assay  
Data Path: C:\...ents and Settings\Bioanalyzer\2012-08-13\2012-08-13\_004.xad

Created: 8/13/2012 11:25:26 AM  
Modified: 8/13/2012 12:07:22 PM

**Electropherogram Summary Continued ...****... Peak table for sample 9 : IR50-3-BF-2**

Peak	Size [bp]	Conc. [pg/ $\mu$ l]	Molarity [pmol/l]	Observations
27	24,649	0.00	0.0	

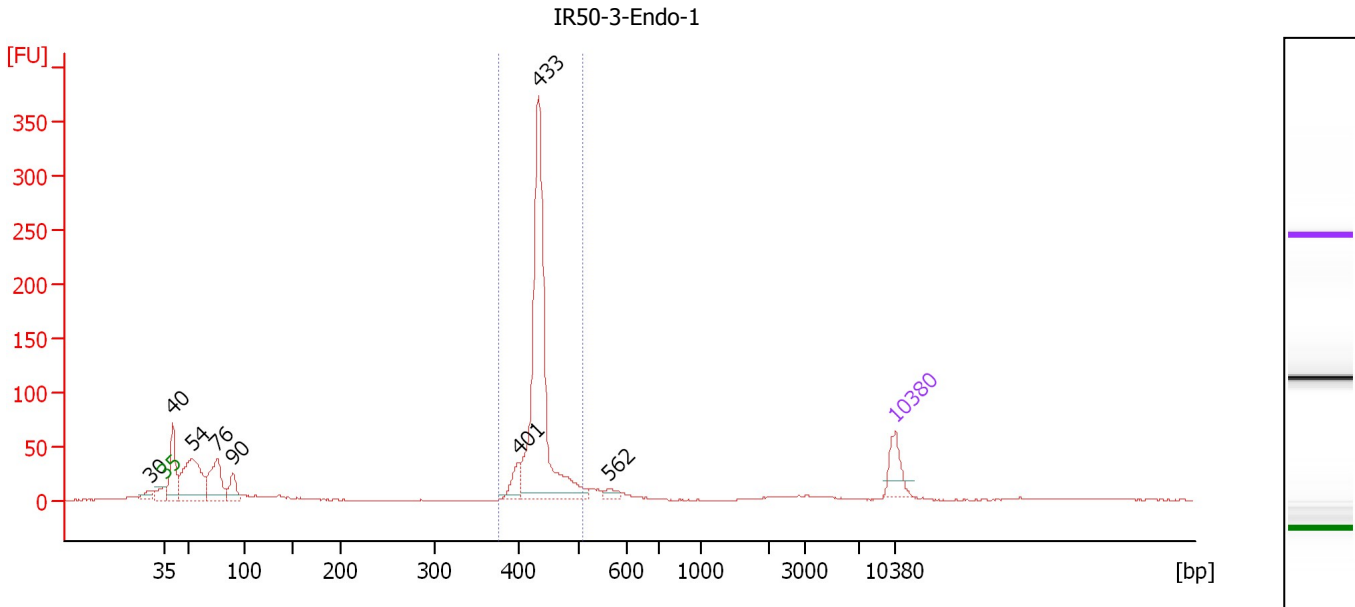
**Region table for sample 9 : IR50-3-BF-2**

From [bp]	To [bp]	Average Size [bp]	Molarity [pmol/l]	Conc. [pg/ $\mu$ l]	Corr. Area	% of Total	Size distribution in CV [%]	Color
388	481	438	1,016.8	294.23	215.2	24	3.8	

Assay Class: High Sensitivity DNA Assay  
 Data Path: C:\...ents and Settings\Bioanalyzer\2012-08-13\2012-08-13\_004.xad

Created: 8/13/2012 11:25:26 AM  
 Modified: 8/13/2012 12:07:22 PM

**Electropherogram Summary Continued ...**



**Overall Results for sample 10 : IR50-3-Endo-1**

Number of peaks found: 8                      Corr. Area 1: 675.5  
 Noise: 0.4

**Peak table for sample 10 : IR50-3-Endo-1**

Peak	Size [bp]	Conc. [pg/μl]	Molarity [pmol/l]	Observations
1	30	0.00	0.0	
2	35	125.00	5,411.3	Lower Marker
3	40	233.57	8,817.4	
4	54	394.94	11,106.5	
5	76	236.84	4,714.2	
6	90	87.12	1,469.2	
7	401	60.09	227.1	
8	433	988.05	3,456.0	
9	562	23.58	63.6	
10	10,380	75.00	10.9	Upper Marker

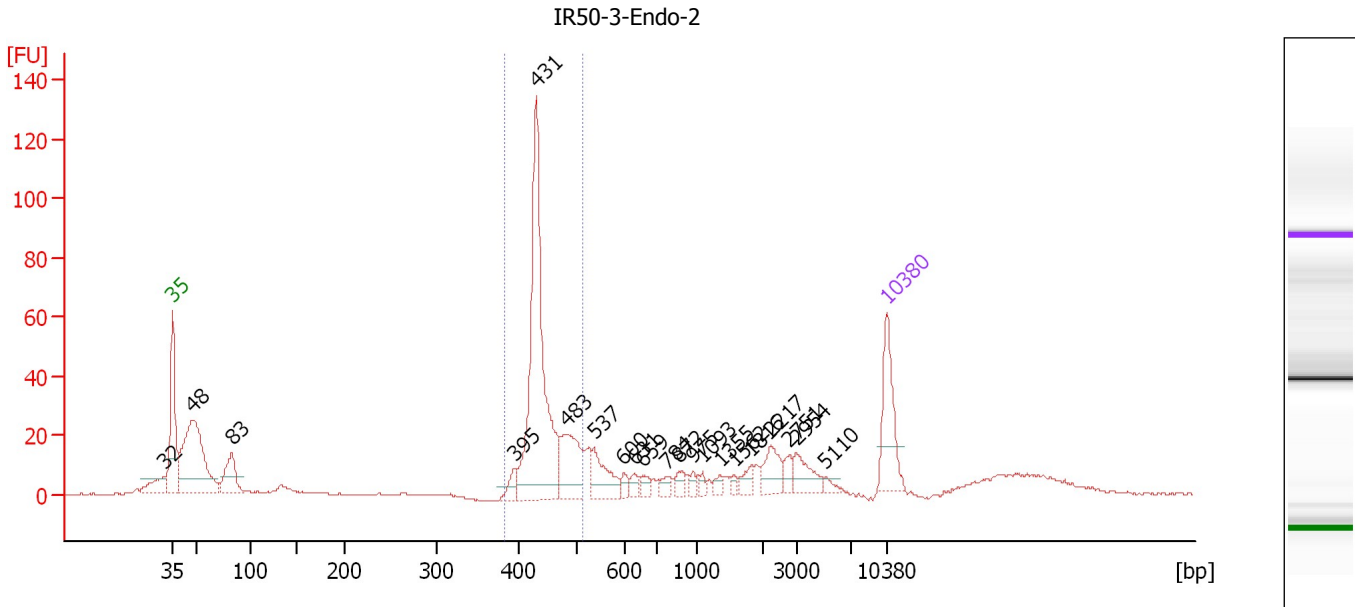
**Region table for sample 10 : IR50-3-Endo-1**

From [bp]	To [bp]	Average Size [bp]	Molarity [pmol/l]	Conc. [pg/μl]	Corr. Area	% of Total	Size distribution in CV [%]	Color
376	508	435	3,655.0	1,047.76	675.5	53	4.7	Blue

Assay Class: High Sensitivity DNA Assay  
 Data Path: C:\...ents and Settings\Bioanalyzer\2012-08-13\2012-08-13\_004.xad

Created: 8/13/2012 11:25:26 AM  
 Modified: 8/13/2012 12:07:22 PM

**Electropherogram Summary Continued ...**



**Overall Results for sample 11 : IR50-3-Endo-2**

Number of peaks found: 21                      Corr. Area 1: 286.5  
 Noise: 0.2

**Peak table for sample 11 : IR50-3-Endo-2**


Peak	Size [bp]	Conc. [pg/μl]	Molarity [pmol/l]	Observations
1	32	0.00	0.0	
2	35	125.00	5,411.3	Lower Marker
3	48	320.46	10,121.4	
4	83	75.95	1,385.6	
5	395	22.14	85.0	
6	431	416.28	1,464.2	
7	483	100.75	316.0	
8	537	58.30	164.6	
9	600	11.13	28.1	
10	631	13.08	31.4	
11	659	12.27	28.2	
12	784	14.69	28.4	
13	872	14.51	25.2	
14	975	7.87	12.2	
15	1,093	6.55	9.1	
16	1,355	8.84	9.9	
17	1,562	6.24	6.1	
18	1,816	13.72	11.4	
19	2,217	35.58	24.3	
20	2,751	13.43	7.4	
21	2,954	33.55	17.2	
22	5,110	6.98	2.1	
23	10,380	75.00	10.9	Upper Marker

Assay Class: High Sensitivity DNA Assay  
Data Path: C:\...ents and Settings\Bioanalyzer\2012-08-13\2012-08-13\_004.xad

Created: 8/13/2012 11:25:26 AM  
Modified: 8/13/2012 12:07:22 PM

**Electropherogram Summary Continued ...**

... Region table for sample 11 : IR50-3-Endo-2

From [bp]	To [bp]	Average Size [bp]	Molarity [pmol/l]	Conc. [pg/ $\mu$ l]	Corr. Area	% of Total	Size distribution in CV [%]	Color
383	513	443	1,713.1	500.13	286.5	38	6.0	

Assay Class: High Sensitivity DNA Assay  
Data Path: C:\...ents and Settings\Bioanalyzer\2012-08-13\2012-08-13\_004.xad

Created: 8/13/2012 11:25:26 AM  
Modified: 8/13/2012 12:07:22 PM

**Gel Image**

