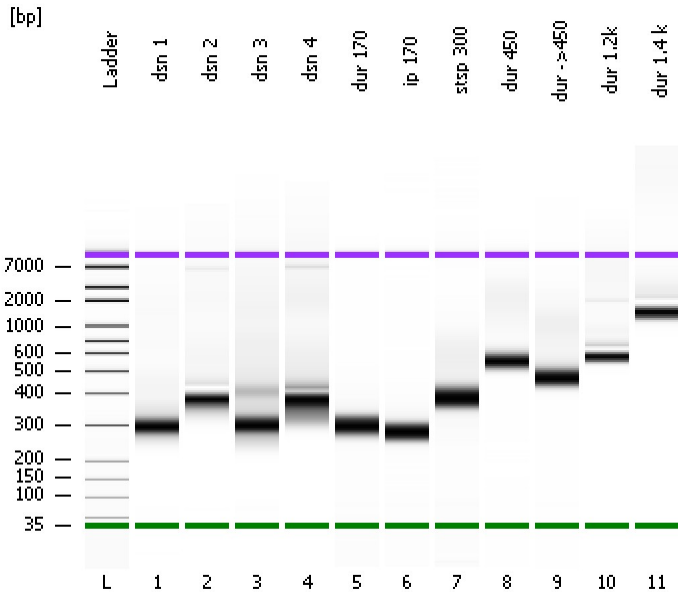


Assay Class: High Sensitivity DNA Assay
Data Path: C:\...ents and Settings\Bioanalyzer\2012-08-13\2012-08-13_006.xad

Created: 8/13/2012 3:19:00 PM
Modified: 8/13/2012 4:02:34 PM

Electrophoresis File Run Summary



Instrument Information:

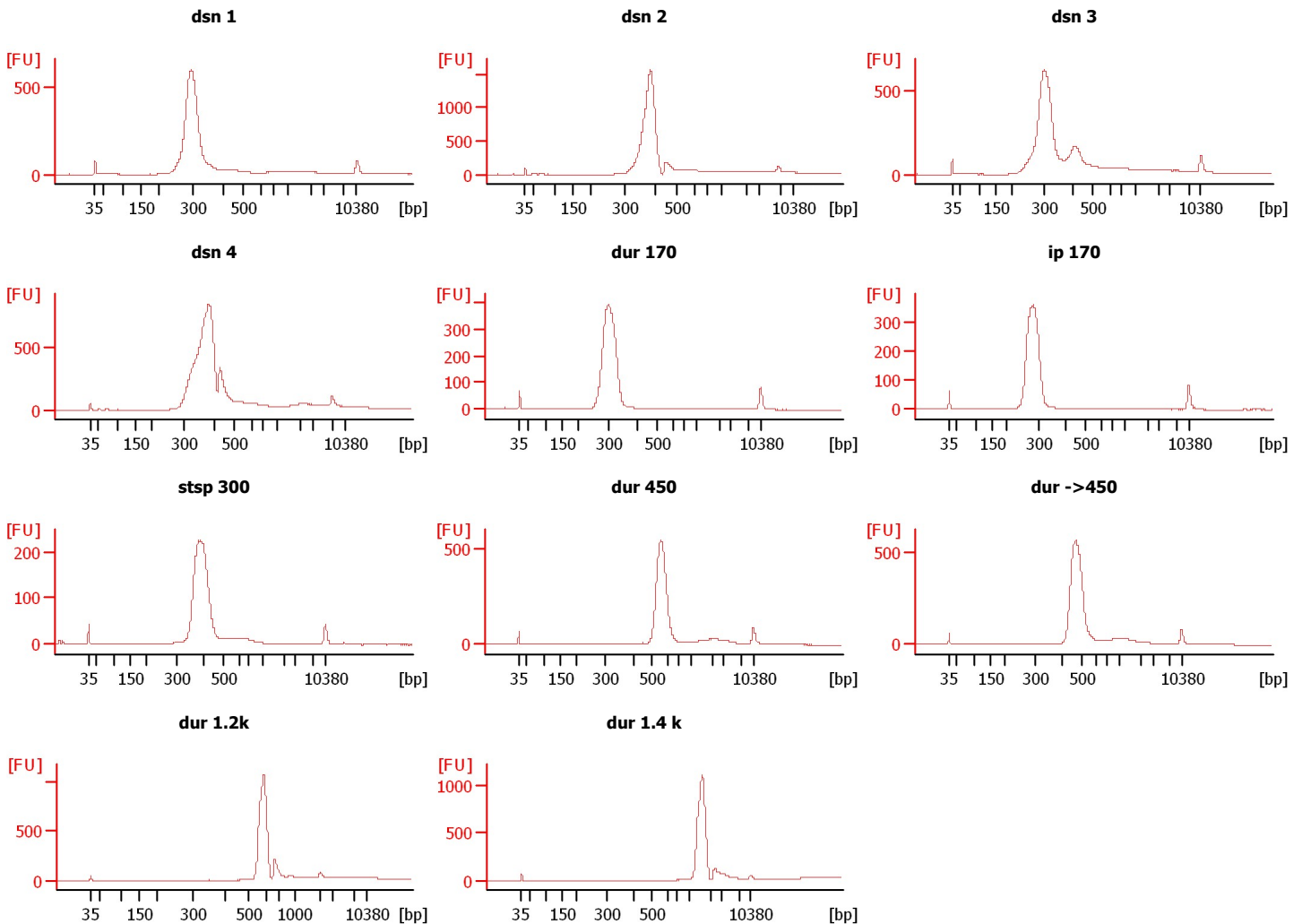
Instrument Name: DE13701086 Firmware: C.01.069
Serial#: DE13701086 Type: G2938B

Assay Information:

Assay Origin Path: C:\Program Files\Agilent\2100 bioanalyzer\2100 expert\assays\dsDNA\High Sensitivity DNA.xsy
Assay Class: High Sensitivity DNA Assay
Version: 1.03
Assay Comments: Copyright © 2003-2010 Agilent Technologies

Chip Information:

Chip Lot #: Reagent Kit Lot #: Chip Comments:



Assay Class: High Sensitivity DNA Assay
 Data Path: C:\...ents and Settings\Bioanalyzer\2012-08-13\2012-08-13_006.xad

Created: 8/13/2012 3:19:00 PM
 Modified: 8/13/2012 4:02:34 PM

Electrophoresis File Run Summary (Chip Summary)

Sample Name	Sample Comment	Rest. Digest	Status	Observation	Result Label	Result Color
dsn 1		<input type="checkbox"/>	✓			
dsn 2		<input type="checkbox"/>	✓			
dsn 3		<input type="checkbox"/>	✓			
dsn 4		<input type="checkbox"/>	✓			
dur 170		<input type="checkbox"/>	✓			
ip 170		<input type="checkbox"/>	✓			
stsp 300		<input type="checkbox"/>	✓			
dur 450		<input type="checkbox"/>	✓			
dur ->450		<input type="checkbox"/>	✓			
dur 1.2k		<input type="checkbox"/>	✓			
dur 1.4 k		<input type="checkbox"/>	✓			
Ladder		<input type="checkbox"/>	✓			

Chip Lot #

Reagent Kit Lot #

Chip Comments :

Assay Class: High Sensitivity DNA Assay
Data Path: C:\...ents and Settings\Bioanalyzer\2012-08-13\2012-08-13_006.xad

Created: 8/13/2012 3:19:00 PM
Modified: 8/13/2012 4:02:34 PM

Electrophoresis Assay Details

General Analysis Settings

Number of Available Sample and Ladder Wells (Max.) : 12
Minimum Visible Range [s] : 32
Maximum Visible Range [s] : 138
Start Analysis Time Range [s] : 33
End Analysis Time Range [s] : 137.5
Ladder Concentration [pg/μl] : 1950
Uses Standard Area for Ladder Fragments
Lower Marker Concentration [pg/μl] : 125
Upper Marker Concentration [pg/μl] : 75
Used Upper Marker for Quantitation
Standard Curve Fit is Point to Point
Show Data Aligned to Lower and Upper Marker

Integrator Settings

Integration Start Time [s] : 33.05
Integration End Time [s] : 137
Slope Threshold : 0.8
Height Threshold [FU] : 5
Area Threshold : 0.1
Width Threshold [s] : 0.6
Baseline Plateau [s] : 0.5

Filter Settings

Filter Width [s] : 0.5
Polynomial Order : 4

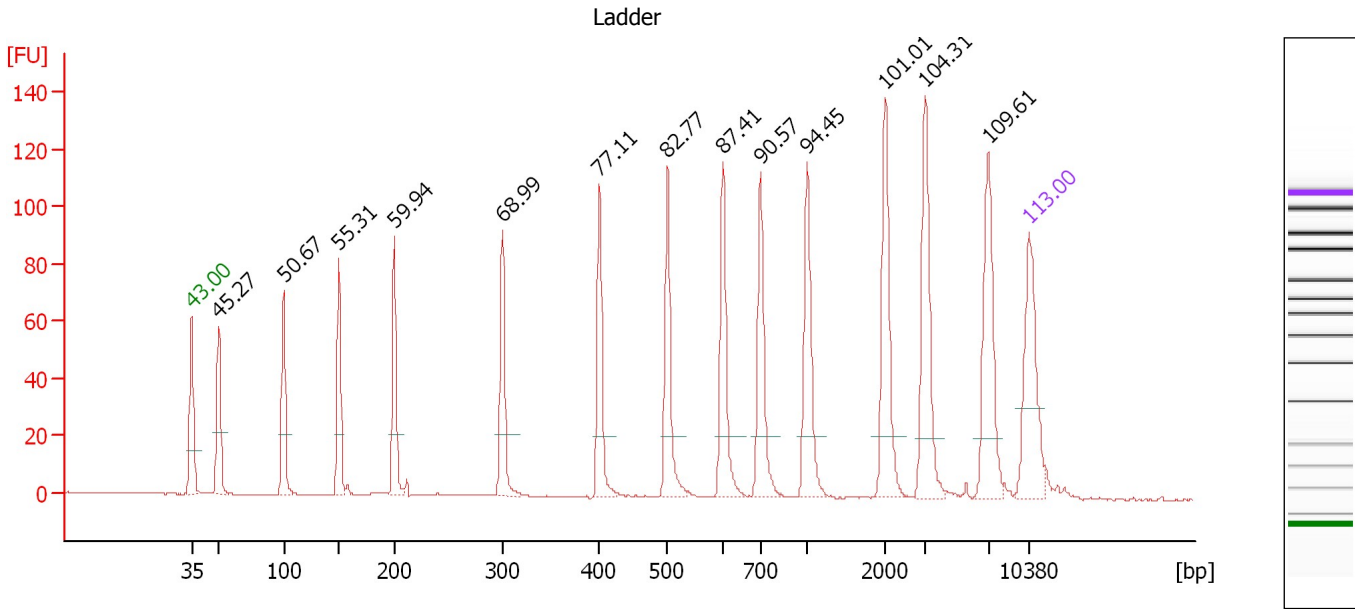
Ladder

Ladder Peak	Size	Area
1	35	160
2	50	210
3	100	208
4	150	221
5	200	242
6	300	270
7	400	305
8	500	306
9	600	336
10	700	321
11	1000	366
12	2000	413
13	3000	411
14	7000	400
15	10380	214

Assay Class: High Sensitivity DNA Assay
 Data Path: C:\...ents and Settings\Bioanalyzer\2012-08-13\2012-08-13_006.xad

Created: 8/13/2012 3:19:00 PM
 Modified: 8/13/2012 4:02:34 PM

Electropherogram Summary



Overall Results for Ladder

Noise: 0.2

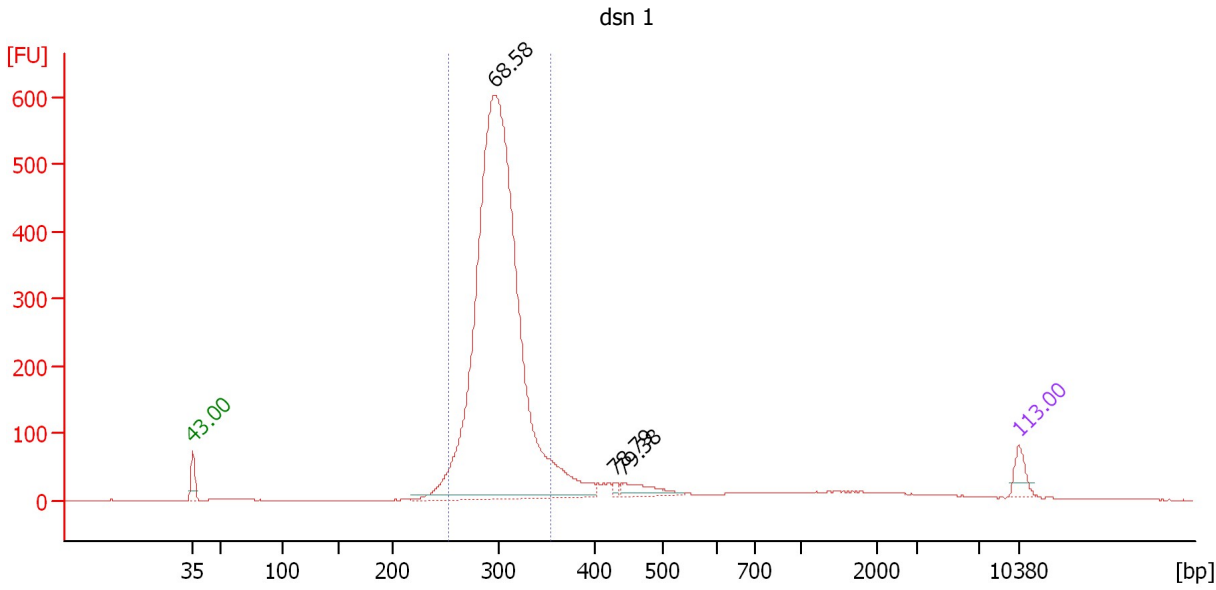
Peak table for Ladder

Peak	Size [bp]	Conc. [pg/µl]	Molarity [pmol/l]	Observations
1	35	125.00	5,411.3	Lower Marker
2	50	150.00	4,545.5	Ladder Peak
3	100	150.00	2,272.7	Ladder Peak
4	150	150.00	1,515.2	Ladder Peak
5	200	150.00	1,136.4	Ladder Peak
6	300	150.00	757.6	Ladder Peak
7	400	150.00	568.2	Ladder Peak
8	500	150.00	454.5	Ladder Peak
9	600	150.00	378.8	Ladder Peak
10	700	150.00	324.7	Ladder Peak
11	1,000	150.00	227.3	Ladder Peak
12	2,000	150.00	113.6	Ladder Peak
13	3,000	150.00	75.8	Ladder Peak
14	7,000	150.00	32.5	Ladder Peak
15	10,380	75.00	10.9	Upper Marker

Assay Class: High Sensitivity DNA Assay
 Data Path: C:\...ents and Settings\Bioanalyzer\2012-08-13\2012-08-13_006.xad

Created: 8/13/2012 3:19:00 PM
 Modified: 8/13/2012 4:02:34 PM

Electropherogram Summary Continued ...



Overall Results for sample 1 : dsn 1

Number of peaks found: 3 Corr. Area 1: 3,680.5
 Noise: 0.2

Peak table for sample 1 : dsn 1

Peak	Size [bp]	Conc. [pg/μl]	Molarity [pmol/l]	Observations
1	35	125.00	5,411.3	Lower Marker
2	295	6,541.60	33,552.2	
3	430	22.88	80.7	
4	440	117.21	403.5	
5	10,380	75.00	10.9	Upper Marker

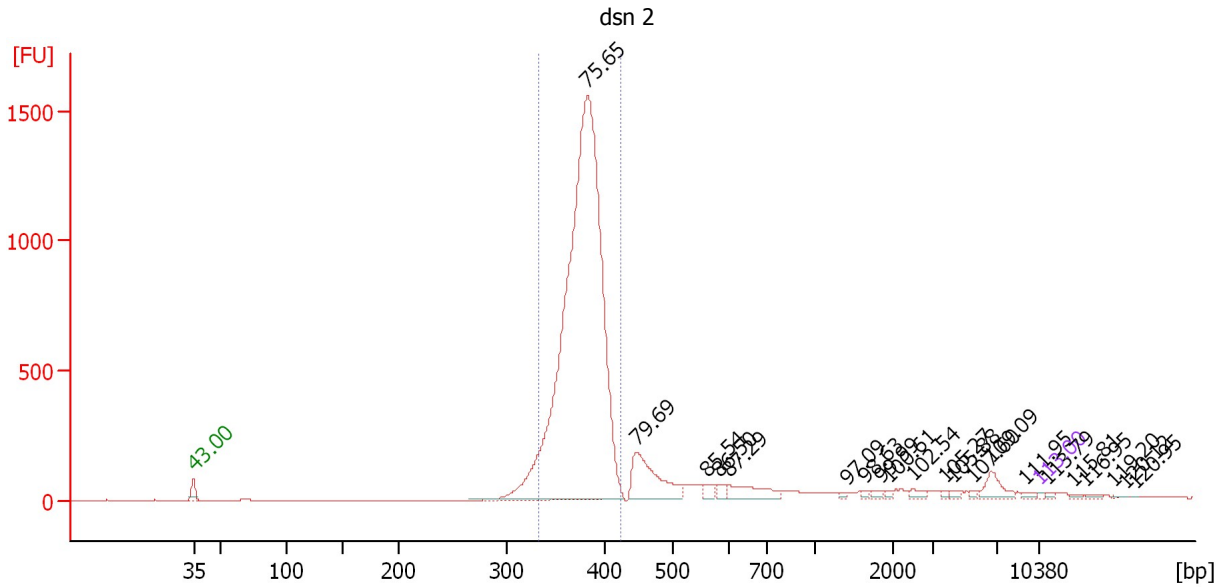
Region table for sample 1 : dsn 1

From [bp]	To [bp]	Average Size [bp]	Molarity [pmol/l]	Conc. [pg/μl]	Corr. Area	% of Total	Size distribution in CV [%]	Color
253	353	299	31,285.3	6,144.19	3,680.5	82	6.5	■

Assay Class: High Sensitivity DNA Assay
 Data Path: C:\...ents and Settings\Bioanalyzer\2012-08-13\2012-08-13_006.xad

Created: 8/13/2012 3:19:00 PM
 Modified: 8/13/2012 4:02:34 PM

Electropherogram Summary Continued ...



Overall Results for sample 2 : dsn 2

Number of peaks found: 21 Corr. Area 1: 7,390.6
 Noise: 0.2

Peak table for sample 2 : dsn 2

Peak	Size [bp]	Conc. [pg/μl]	Molarity [pmol/l]	Observations
1	35	125.00	5,411.3	Lower Marker
2	382	81,238.52	322,206.4	
3	446	6,256.89	21,273.8	
4	560	636.45	1,723.1	
5	580	499.66	1,304.2	
6	598	2,254.55	5,716.7	
7	1,403	156.18	168.7	
8	1,638	163.90	151.6	
9	1,845	278.27	228.5	
10	1,939	187.49	146.5	
11	2,465	385.08	236.7	
12	3,724	128.37	52.2	
13	4,188	226.77	82.0	
14	5,480	121.16	33.5	
15	6,606	1,220.95	280.0	
16	9,328	213.05	34.6	
17	10,380	75.00	10.9	Upper Marker
18	11,169	0.00	0.0	
19	13,185	0.00	0.0	
20	14,325	0.00	0.0	
21	16,560	0.00	0.0	
22	17,481	0.00	0.0	
23	18,314	0.00	0.0	

Assay Class: High Sensitivity DNA Assay
Data Path: C:\...ents and Settings\Bioanalyzer\2012-08-13\2012-08-13_006.xad

Created: 8/13/2012 3:19:00 PM
Modified: 8/13/2012 4:02:34 PM

Electropherogram Summary Continued ...

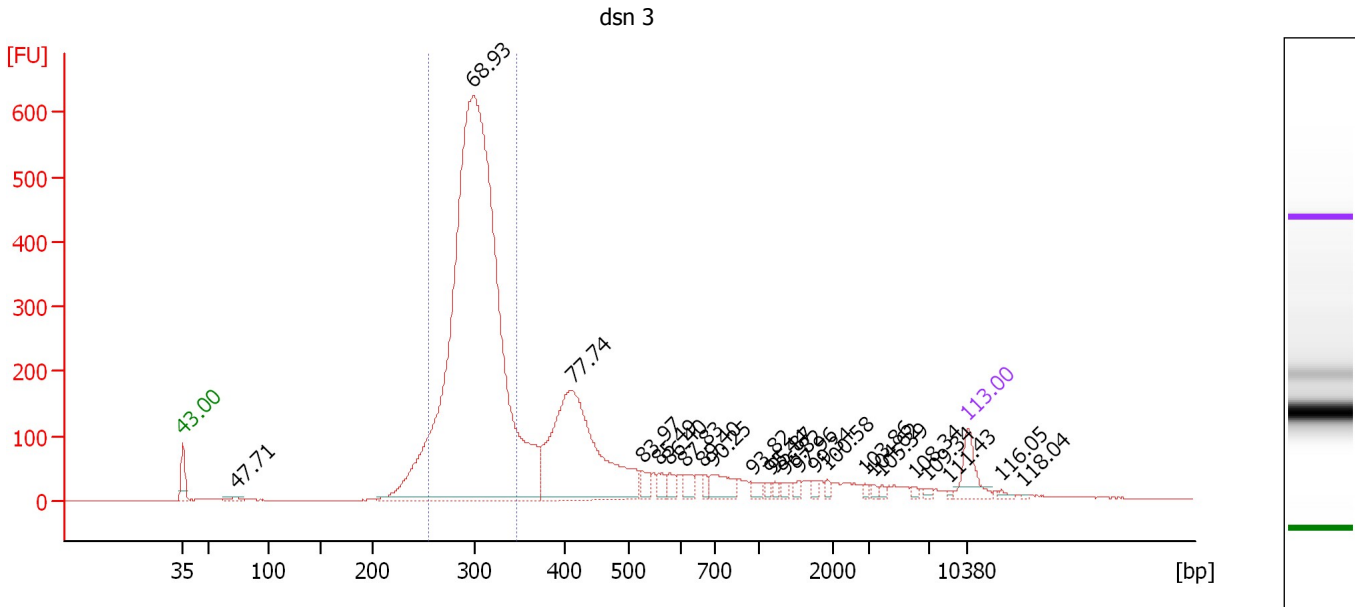
... Region table for sample 2 : dsn 2

From [bp]	To [bp]	Average Size [bp]	Molarity [pmol/l]	Conc. [pg/μl]	Corr. Area	% of Total	Size distribution in CV [%]	Color
332	424	377	317,562.7	78,880.00	7,390.6	77	4.7	■

Assay Class: High Sensitivity DNA Assay
 Data Path: C:\...ents and Settings\Bioanalyzer\2012-08-13\2012-08-13_006.xad

Created: 8/13/2012 3:19:00 PM
 Modified: 8/13/2012 4:02:34 PM

Electropherogram Summary Continued ...



Overall Results for sample 3 : dsn 3

Number of peaks found: 24 Corr. Area 1: 4,113.2
 Noise: 0.4

Peak table for sample 3 : dsn 3

Peak	Size [bp]	Conc. [pg/μl]	Molarity [pmol/l]	Observations
1	35	125.00	5,411.3	Lower Marker
2	73	17.73	370.1	
3	299	4,158.11	21,046.2	
4	411	885.78	3,264.4	
5	526	39.86	114.8	
6	559	28.90	78.4	
7	578	28.98	75.9	
8	613	36.35	89.8	
9	663	19.52	44.6	
10	690	72.62	159.5	
11	951	21.71	34.6	
12	1,151	11.57	15.2	
13	1,216	11.81	14.7	
14	1,361	13.88	15.5	
15	1,536	11.71	11.6	
16	1,746	10.90	9.5	
17	1,935	10.26	8.0	
18	2,866	8.22	4.3	
19	3,241	8.02	3.8	
20	3,815	7.52	3.0	
21	6,039	7.12	1.8	
22	6,792	6.78	1.5	
23	8,814	4.26	0.7	
24	10,380	75.00	10.9	Upper Marker
25	13,418	0.00	0.0	
26	15,411	0.00	0.0	

Assay Class: High Sensitivity DNA Assay
Data Path: C:\...ents and Settings\Bioanalyzer\2012-08-13\2012-08-13_006.xad

Created: 8/13/2012 3:19:00 PM
Modified: 8/13/2012 4:02:34 PM

Electropherogram Summary Continued ...

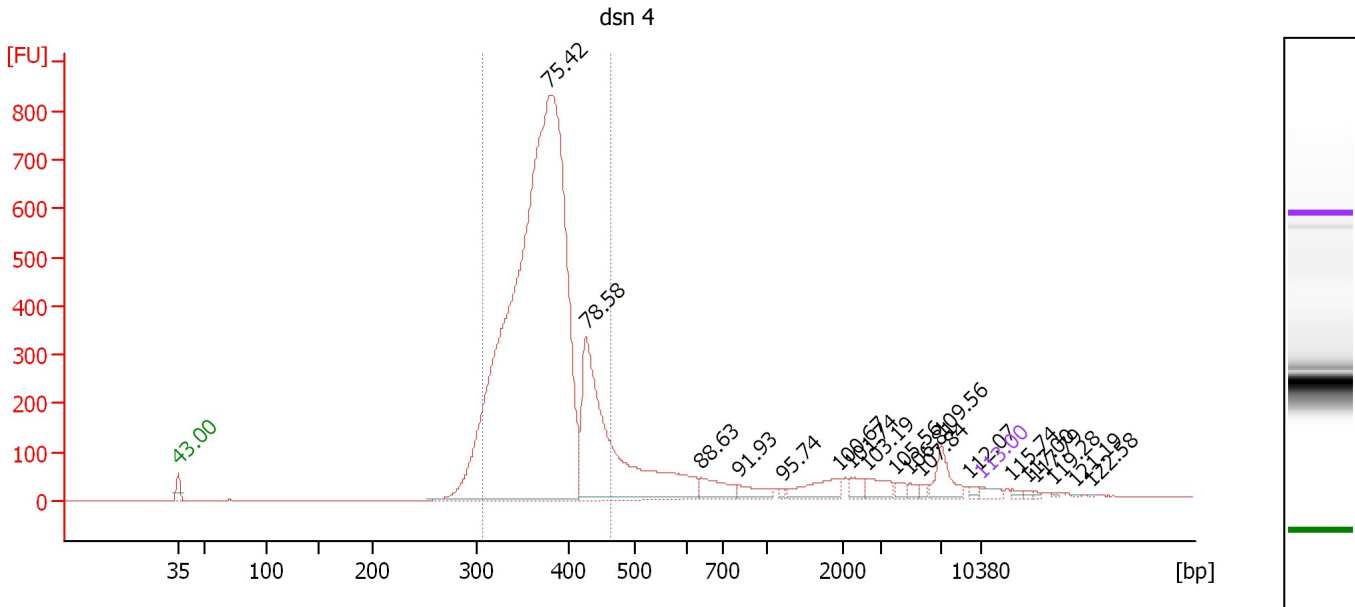
... Region table for sample 3 : dsn 3

From [bp]	To [bp]	Average Size [bp]	Molarity [pmol/l]	Conc. [pg/μl]	Corr. Area	% of Total	Size distribution in CV [%]	Color
255	346	301	18,583.5	3,674.39	4,113.2	61	6.6	■

Assay Class: High Sensitivity DNA Assay
 Data Path: C:\...ents and Settings\Bioanalyzer\2012-08-13\2012-08-13_006.xad

Created: 8/13/2012 3:19:00 PM
 Modified: 8/13/2012 4:02:34 PM

Electropherogram Summary Continued ...



Overall Results for sample 4 : dsn 4

Number of peaks found: 19 Corr. Area 1: 6,798.2
 Noise: 0.3

Peak table for sample 4 : dsn 4

Peak	Size [bp]	Conc. [pg/μl]	Molarity [pmol/l]	Observations
1	35	125.00	5,411.3	Lower Marker
2	379	18,000.86	71,929.4	
3	426	4,031.37	14,337.8	
4	639	367.13	871.1	
5	805	203.42	382.9	
6	1,197	31.43	39.8	
7	1,949	320.77	249.3	
8	2,224	132.91	90.6	
9	2,661	187.84	107.0	
10	3,944	72.72	27.9	
11	4,891	56.47	17.5	
12	5,662	45.57	12.2	
13	6,960	317.27	69.1	
14	9,452	36.32	5.8	
15	10,380	75.00	10.9	Upper Marker
16	13,117	0.00	0.0	
17	14,370	0.00	0.0	
18	15,159	0.00	0.0	
19	16,643	0.00	0.0	
20	18,545	0.00	0.0	
21	19,937	0.00	0.0	

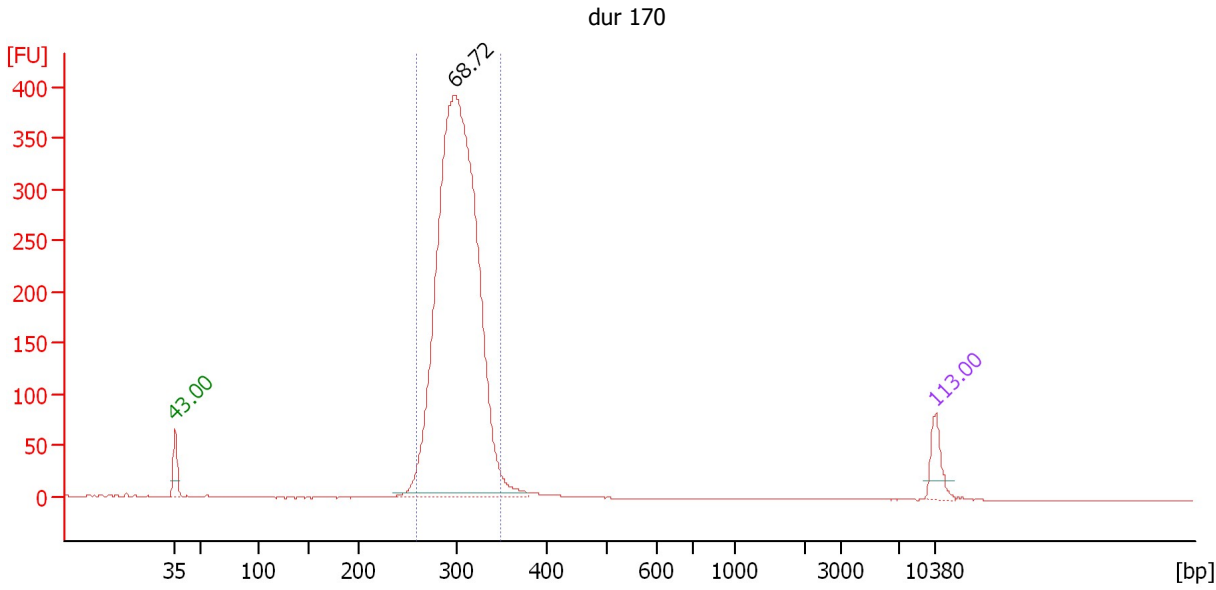
Region table for sample 4 : dsn 4

From [bp]	To [bp]	Average Size [bp]	Molarity [pmol/l]	Conc. [pg/μl]	Corr. Area	% of Total	Size distribution in CV [%]	Color
306	464	373	81,423.5	19,920.62	6,798.2	79	9.1	Blue

Assay Class: High Sensitivity DNA Assay
 Data Path: C:\...ents and Settings\Bioanalyzer\2012-08-13\2012-08-13_006.xad

Created: 8/13/2012 3:19:00 PM
 Modified: 8/13/2012 4:02:34 PM

Electropherogram Summary Continued ...



Overall Results for sample 5 : dur 170

Number of peaks found: 1 Corr. Area 1: 2,549.0
 Noise: 0.2

Peak table for sample 5 : dur 170

Peak	Size [bp]	Conc. [pg/μl]	Molarity [pmol/l]	Observations
1	35	125.00	5,411.3	Lower Marker
2	297	3,757.75	19,170.1	
3	10,380	75.00	10.9	Upper Marker

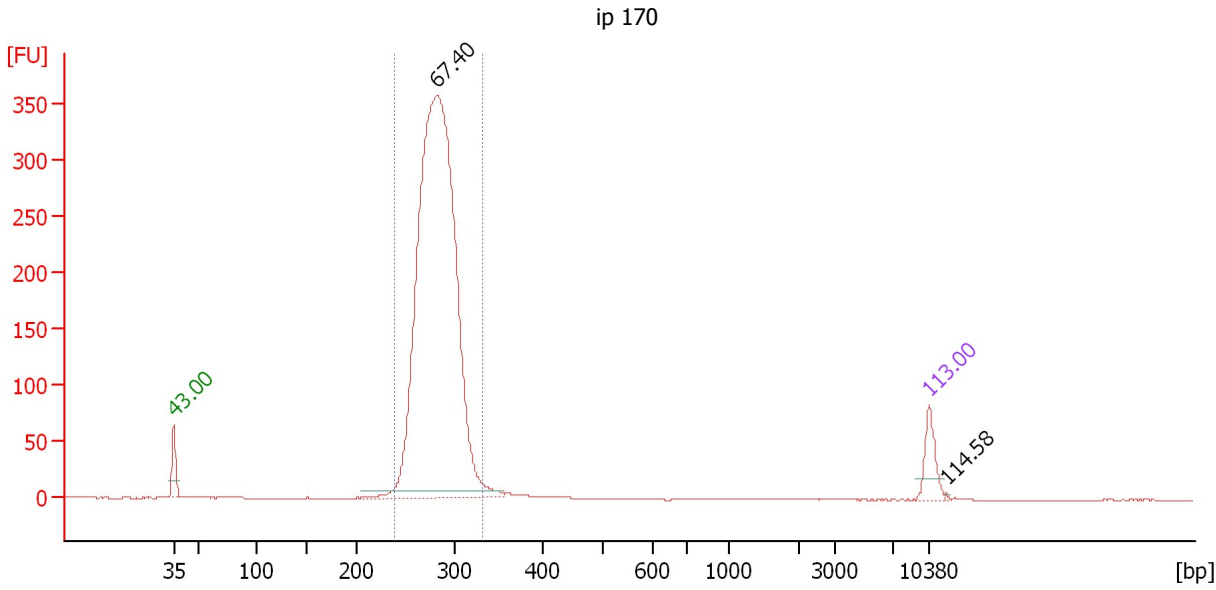
Region table for sample 5 : dur 170

From [bp]	To [bp]	Average Size [bp]	Molarity [pmol/l]	Conc. [pg/μl]	Corr. Area	% of Total	Size distribution in CV [%]	Color
259	348	301	18,386.2	3,635.08	2,549.0	95	6.1	Blue

Assay Class: High Sensitivity DNA Assay
 Data Path: C:\...ents and Settings\Bioanalyzer\2012-08-13\2012-08-13_006.xad

Created: 8/13/2012 3:19:00 PM
 Modified: 8/13/2012 4:02:34 PM

Electropherogram Summary Continued ...



Overall Results for sample 6 : ip 170

Number of peaks found: 2 Corr. Area 1: 2,241.2
 Noise: 0.2

Peak table for sample 6 : ip 170

Peak	Size [bp]	Conc. [pg/μl]	Molarity [pmol/l]	Observations
1	35	125.00	5,411.3	Lower Marker
2	282	3,351.83	17,981.3	
3	10,380	75.00	10.9	Upper Marker
4	11,957	0.00	0.0	

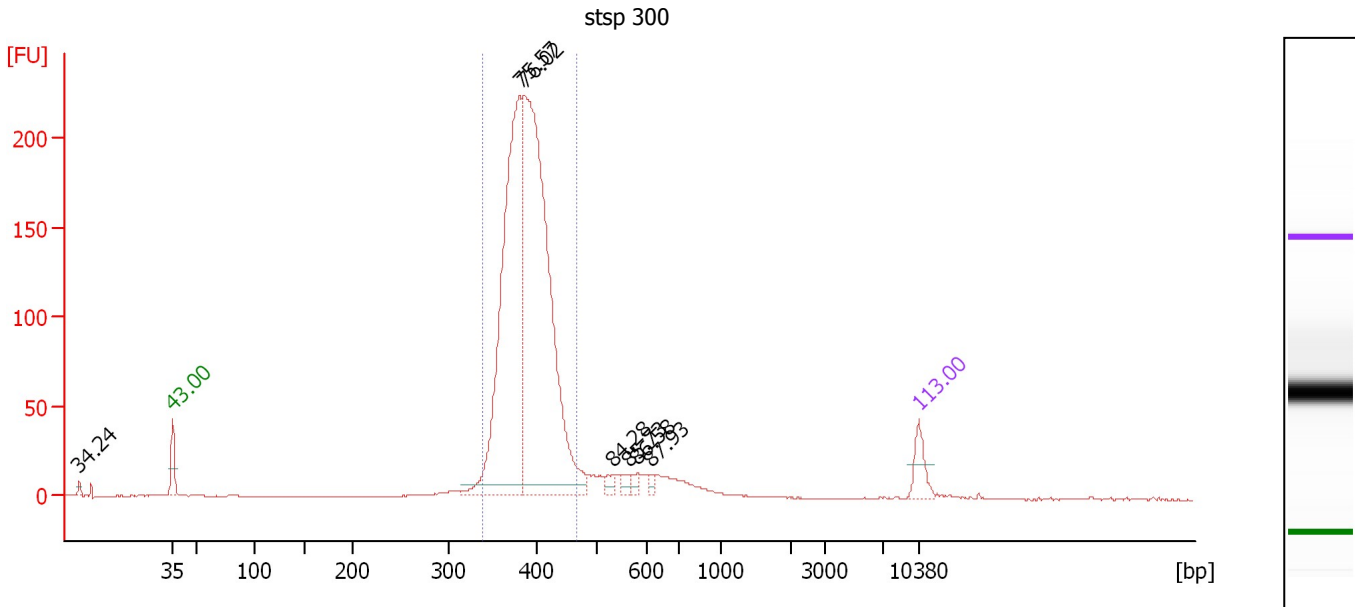
Region table for sample 6 : ip 170

From [bp]	To [bp]	Average Size [bp]	Molarity [pmol/l]	Conc. [pg/μl]	Corr. Area	% of Total	Size distribution in CV [%]	Color
239	331	283	17,884.6	3,327.27	2,241.2	97	5.9	Blue

Assay Class: High Sensitivity DNA Assay
 Data Path: C:\...ents and Settings\Bioanalyzer\2012-08-13\2012-08-13_006.xad

Created: 8/13/2012 3:19:00 PM
 Modified: 8/13/2012 4:02:34 PM

Electropherogram Summary Continued ...



Overall Results for sample 7 : stsp 300

Number of peaks found: 7 Corr. Area 1: 1,466.5
 Noise: 0.2

Peak table for sample 7 : stsp 300

Peak	Size [bp]	Conc. [pg/μl]	Molarity [pmol/l]	Observations
1	4	0.00	0.0	
2	35	125.00	5,411.3	Lower Marker
3	381	1,687.37	6,708.8	
4	387	2,239.75	8,777.2	
5	533	29.58	84.2	
6	564	30.87	83.0	
7	582	24.67	64.2	
8	617	20.54	50.5	
9	10,380	75.00	10.9	Upper Marker

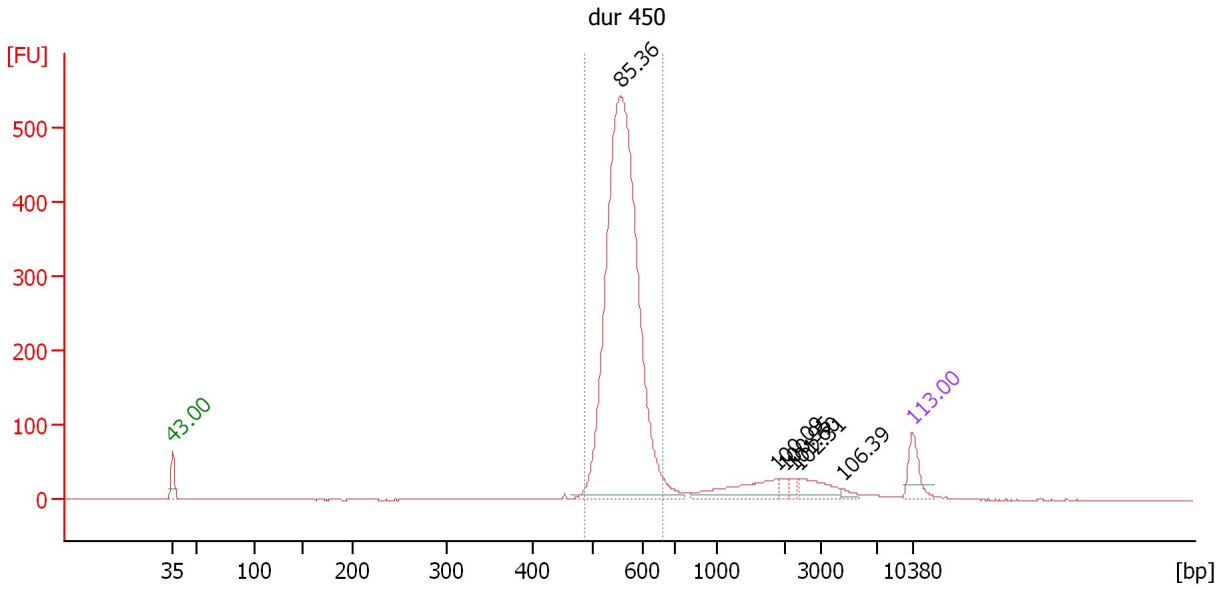
Region table for sample 7 : stsp 300

From [bp]	To [bp]	Average Size [bp]	Molarity [pmol/l]	Conc. [pg/μl]	Corr. Area	% of Total	Size distribution in CV [%]	Color
337	466	391	15,033.9	3,866.43	1,466.5	88	6.3	Blue

Assay Class: High Sensitivity DNA Assay
 Data Path: C:\...ents and Settings\Bioanalyzer\2012-08-13\2012-08-13_006.xad

Created: 8/13/2012 3:19:00 PM
 Modified: 8/13/2012 4:02:34 PM

Electropherogram Summary Continued ...



Overall Results for sample 8 : dur 450

Number of peaks found: 6 Corr. Area 1: 2,243.2
 Noise: 0.1

Peak table for sample 8 : dur 450

Peak	Size [bp]	Conc. [pg/μl]	Molarity [pmol/l]	Observations
1	35	125.00	5,411.3	Lower Marker
2	556	2,388.19	6,509.1	
3	1,860	121.39	98.9	
4	1,991	23.19	17.6	
5	2,181	17.40	12.1	
6	2,395	72.34	45.8	
7	4,574	13.94	4.6	
8	10,380	75.00	10.9	Upper Marker

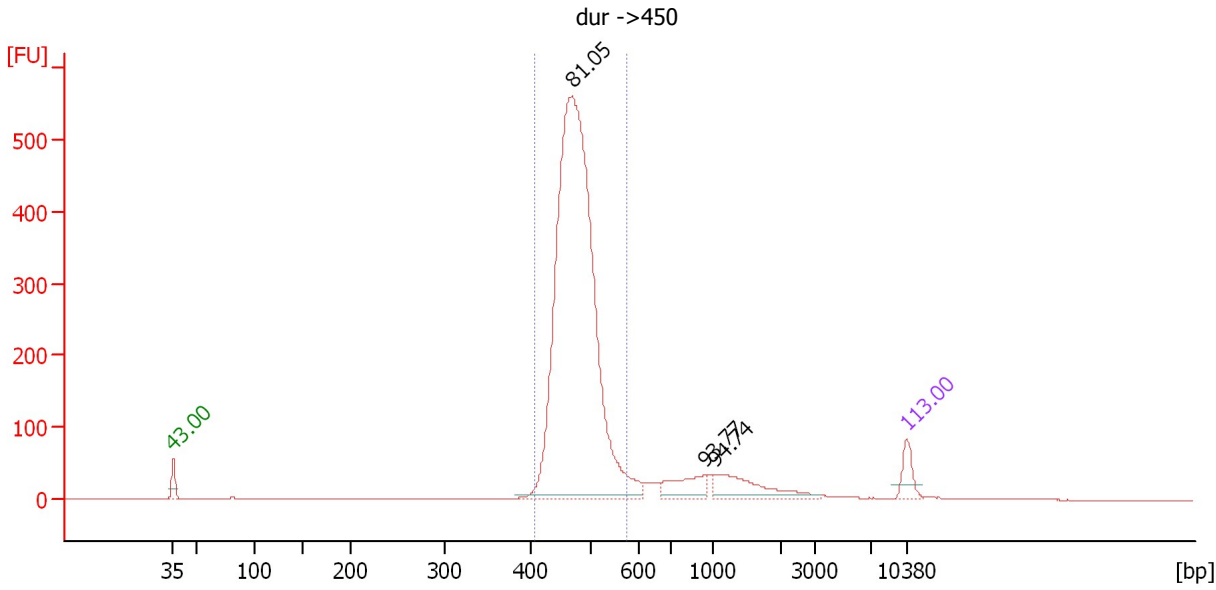
Region table for sample 8 : dur 450

From [bp]	To [bp]	Average Size [bp]	Molarity [pmol/l]	Conc. [pg/μl]	Corr. Area	% of Total	Size distribution in CV [%]	Color
487	663	561	6,348.3	2,345.79	2,243.2	83	5.5	Blue

Assay Class: High Sensitivity DNA Assay
 Data Path: C:\...ents and Settings\Bioanalyzer\2012-08-13\2012-08-13_006.xad

Created: 8/13/2012 3:19:00 PM
 Modified: 8/13/2012 4:02:34 PM

Electropherogram Summary Continued ...



Overall Results for sample 9 : dur ->450

Number of peaks found: 3 Corr. Area 1: 2,865.2
 Noise: 0.1

Peak table for sample 9 : dur ->450

Peak	Size [bp]	Conc. [pg/μl]	Molarity [pmol/l]	Observations
1	35	125.00	5,411.3	Lower Marker
2	470	3,807.02	12,281.9	
3	947	143.11	228.9	
4	1,043	211.51	307.1	
5	10,380	75.00	10.9	Upper Marker

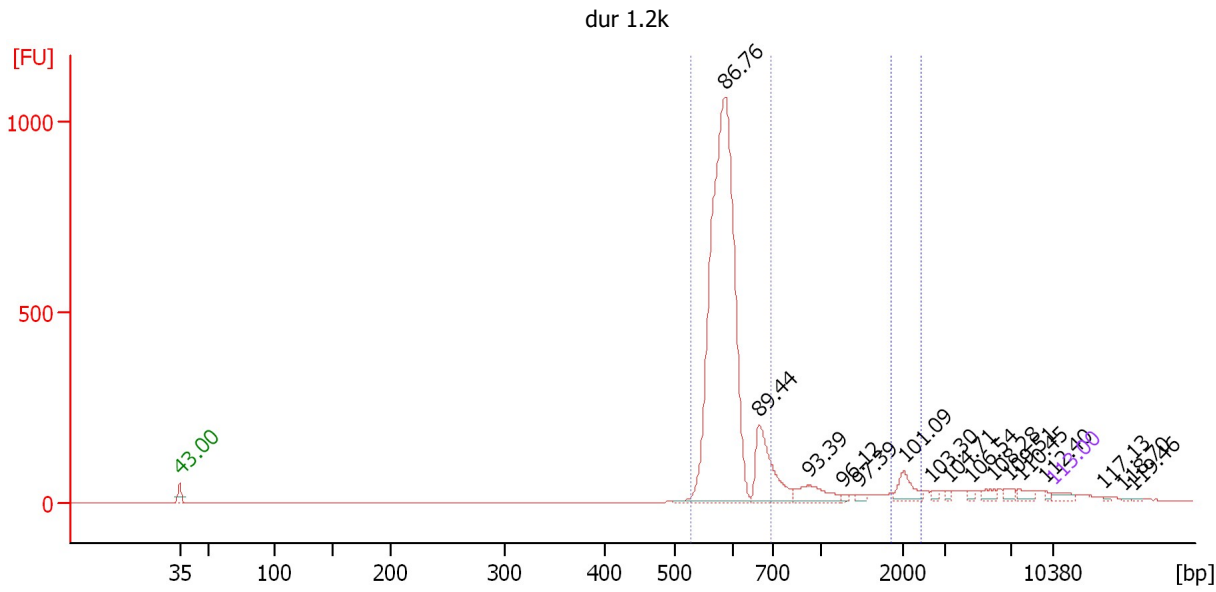
Region table for sample 9 : dur ->450

From [bp]	To [bp]	Average Size [bp]	Molarity [pmol/l]	Conc. [pg/μl]	Corr. Area	% of Total	Size distribution in CV [%]	Color
407	575	477	11,865.1	3,727.14	2,865.2	83	6.3	Blue

Assay Class: High Sensitivity DNA Assay
 Data Path: C:\...ents and Settings\Bioanalyzer\2012-08-13\2012-08-13_006.xad

Created: 8/13/2012 3:19:00 PM
 Modified: 8/13/2012 4:02:34 PM

Electropherogram Summary Continued ...



Overall Results for sample 10 : dur 1.2k

Number of peaks found: 16 Corr. Area 1: 3,191.6
 Noise: 0.1 Corr. Area 2: 114.2

Peak table for sample 10 : dur 1.2k

Peak	Size [bp]	Conc. [pg/μl]	Molarity [pmol/l]	Observations
1	35	125.00	5,411.3	Lower Marker
2	586	8,016.85	20,726.6	
3	664	1,069.66	2,440.1	
4	918	351.88	580.6	
5	1,254	34.66	41.9	
6	1,449	44.39	46.4	
7	2,026	260.78	195.0	
8	2,696	38.90	21.9	
9	3,303	33.80	15.5	
10	4,681	38.47	12.5	
11	5,996	82.99	21.0	
12	6,926	69.55	15.2	
13	7,835	85.86	16.6	
14	9,786	27.86	4.3	
15	10,380	75.00	10.9	Upper Marker
16	14,495	0.00	0.0	
17	16,064	0.00	0.0	
18	16,828	0.00	0.0	

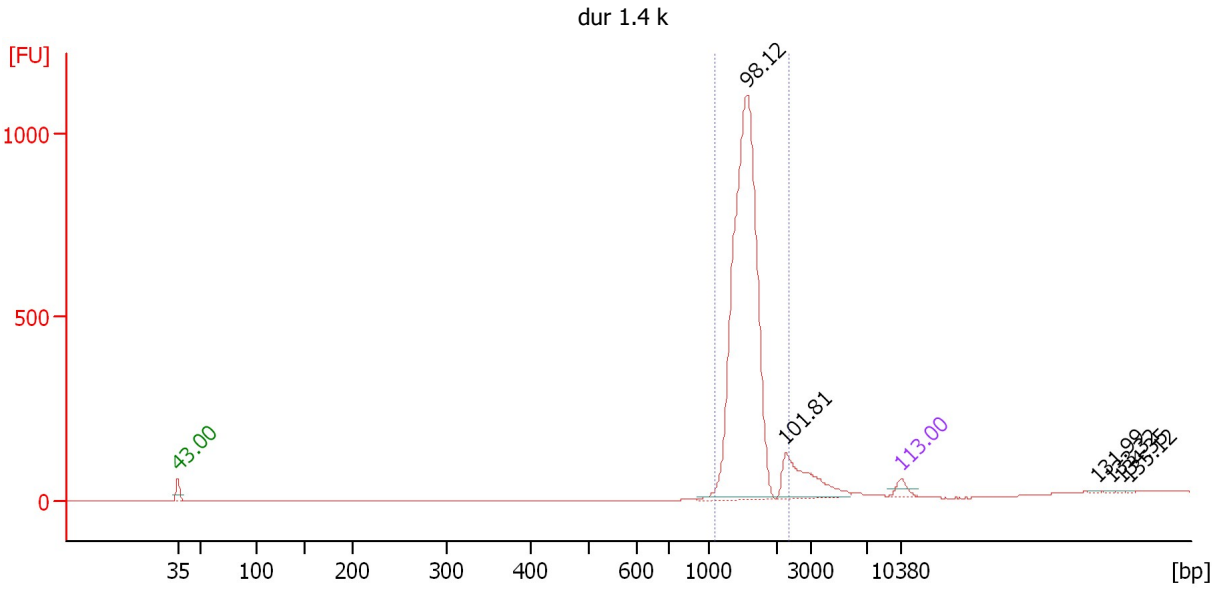
Region table for sample 10 : dur 1.2k

From [bp]	To [bp]	Average Size [bp]	Molarity [pmol/l]	Conc. [pg/μl]	Corr. Area	% of Total	Size distribution in CV [%]	Color
526	695	588	22,631.5	8,769.04	3,191.6	80	5.3	Blue
1,845	2,430	2,075	184.1	251.28	114.2	3	7.0	Dark Blue

Assay Class: High Sensitivity DNA Assay
 Data Path: C:\...ents and Settings\Bioanalyzer\2012-08-13\2012-08-13_006.xad

Created: 8/13/2012 3:19:00 PM
 Modified: 8/13/2012 4:02:34 PM

Electropherogram Summary Continued ...



Overall Results for sample 11 : dur 1.4 k

Number of peaks found: 6 Corr. Area 1: 3,002.8
 Noise: 0.2

Peak table for sample 11 : dur 1.4 k

Peak	Size [bp]	Conc. [pg/μl]	Molarity [pmol/l]	Observations
1	35	125.00	5,411.3	Lower Marker
2	1,559	4,859.06	4,721.8	
3	2,244	577.93	390.2	
4	10,380	75.00	10.9	Upper Marker
5	29,320	0.00	0.0	
6	30,651	0.00	0.0	
7	31,675	0.00	0.0	
8	32,443	0.00	0.0	

Region table for sample 11 : dur 1.4 k

From [bp]	To [bp]	Average Size [bp]	Molarity [pmol/l]	Conc. [pg/μl]	Corr. Area	% of Total	Size distribution in CV [%]	Color
1,078	2,344	1,536	4,832.5	4,876.31	3,002.8	92	12.1	Blue

Assay Class: High Sensitivity DNA Assay
Data Path: C:\...ents and Settings\Bioanalyzer\2012-08-13\2012-08-13_006.xad

Created: 8/13/2012 3:19:00 PM
Modified: 8/13/2012 4:02:34 PM

Gel Image

