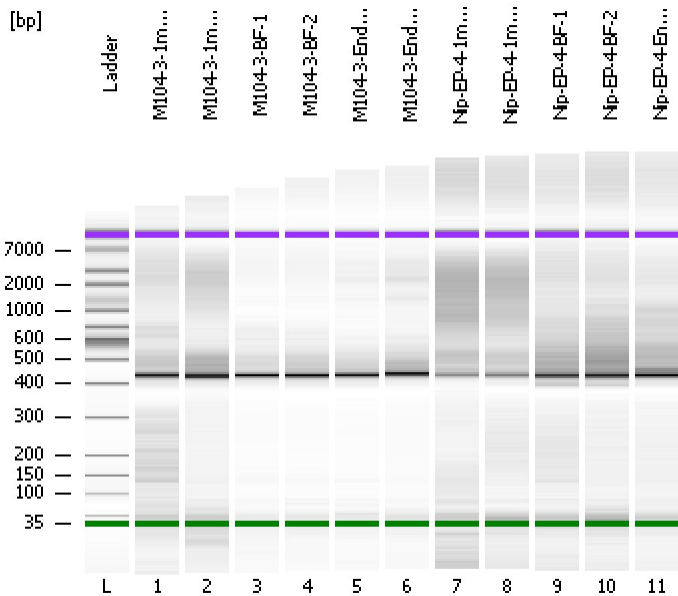


Assay Class: High Sensitivity DNA Assay
Data Path: C:\...ents and Settings\Bioanalyzer\2012-08-14\2012-08-14_001.xad

Created: 8/14/2012 9:09:24 AM
Modified: 8/14/2012 9:51:33 AM

Electrophoresis File Run Summary



Instrument Information:

Instrument Name: DE13701086 Firmware: C.01.069
Serial#: DE13701086 Type: G2938B

Assay Information:

Assay Origin Path: C:\Program Files\Agilent\2100 bioanalyzer\2100 expert\assays\dsDNA\High Sensitivity DNA.xsy
Assay Class: High Sensitivity DNA Assay
Version: 1.03
Assay Comments: Copyright © 2003-2010 Agilent Technologies

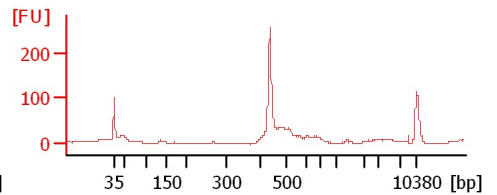
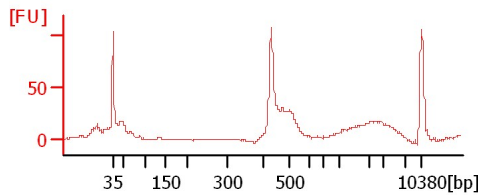
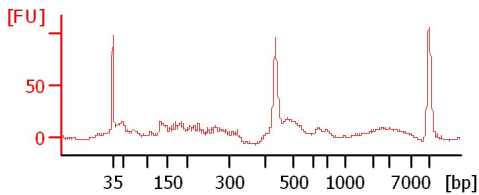
Chip Information:

Chip Lot #:
Reagent Kit Lot #:
Chip Comments:

M104-3-1mm-2

M104-3-1mm-1

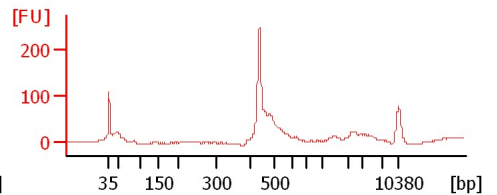
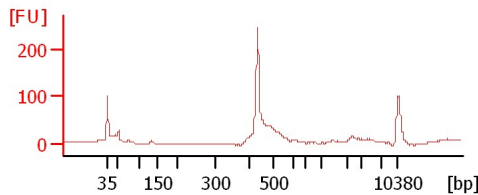
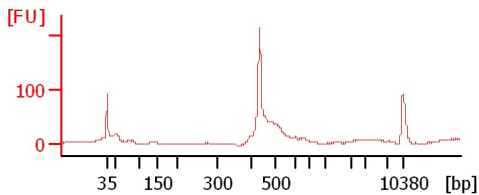
M104-3-BF-1



M104-3-BF-2

M104-3-Endo-1

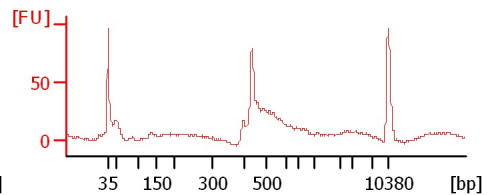
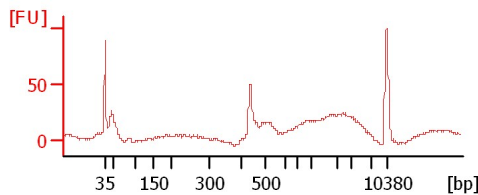
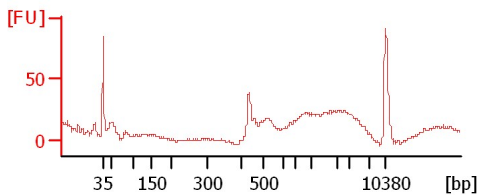
M104-3-Endo-2



Nip-EP-4-1mm-1

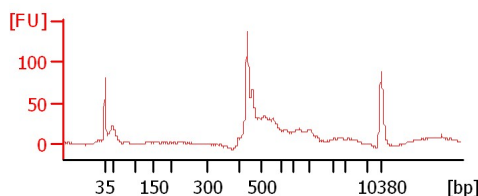
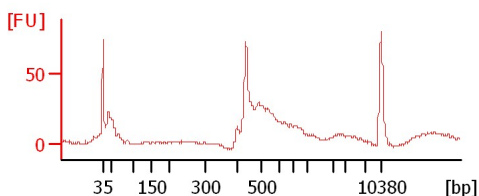
Nip-EP-4-1mm-2

Nip-EP-4-BF-1



Nip-EP-4-BF-2

Nip-EP-4-Endo-1



Assay Class: High Sensitivity DNA Assay
 Data Path: C:\...ents and Settings\Bioanalyzer\2012-08-14\2012-08-14_001.xad

Created: 8/14/2012 9:09:24 AM
 Modified: 8/14/2012 9:51:33 AM

Electrophoresis File Run Summary (Chip Summary)

Sample Name	Sample Comment	Rest. Digest	Status	Observation	Result Label	Result Color
M104-3-1mm-2		<input type="checkbox"/>	✓			
M104-3-1mm-1		<input type="checkbox"/>	✓			
M104-3-BF-1		<input type="checkbox"/>	✓			
M104-3-BF-2		<input type="checkbox"/>	✓			
M104-3-Endo-1		<input type="checkbox"/>	✓			
M104-3-Endo-2		<input type="checkbox"/>	✓			
Nip-EP-4-1mm-1		<input type="checkbox"/>	✓			
Nip-EP-4-1mm-2		<input type="checkbox"/>	✓			
Nip-EP-4-BF-1		<input type="checkbox"/>	✓			
Nip-EP-4-BF-2		<input type="checkbox"/>	✓			
Nip-EP-4-Endo-1		<input type="checkbox"/>	✓			
Ladder		<input type="checkbox"/>	✓			

Chip Lot #

Reagent Kit Lot #

Chip Comments :

Assay Class: High Sensitivity DNA Assay
Data Path: C:\...ents and Settings\Bioanalyzer\2012-08-14\2012-08-14_001.xad

Created: 8/14/2012 9:09:24 AM
Modified: 8/14/2012 9:51:33 AM

Electrophoresis Assay Details

General Analysis Settings

Number of Available Sample and Ladder Wells (Max.) : 12
Minimum Visible Range [s] : 32
Maximum Visible Range [s] : 138
Start Analysis Time Range [s] : 33
End Analysis Time Range [s] : 137.5
Ladder Concentration [pg/μl] : 1950
Uses Standard Area for Ladder Fragments
Lower Marker Concentration [pg/μl] : 125
Upper Marker Concentration [pg/μl] : 75
Used Upper Marker for Quantitation
Standard Curve Fit is Point to Point
Show Data Aligned to Lower and Upper Marker

Integrator Settings

Integration Start Time [s] : 33.05
Integration End Time [s] : 137
Slope Threshold : 0.8
Height Threshold [FU] : 5
Area Threshold : 0.1
Width Threshold [s] : 0.6
Baseline Plateau [s] : 0.5

Filter Settings

Filter Width [s] : 0.5
Polynomial Order : 4

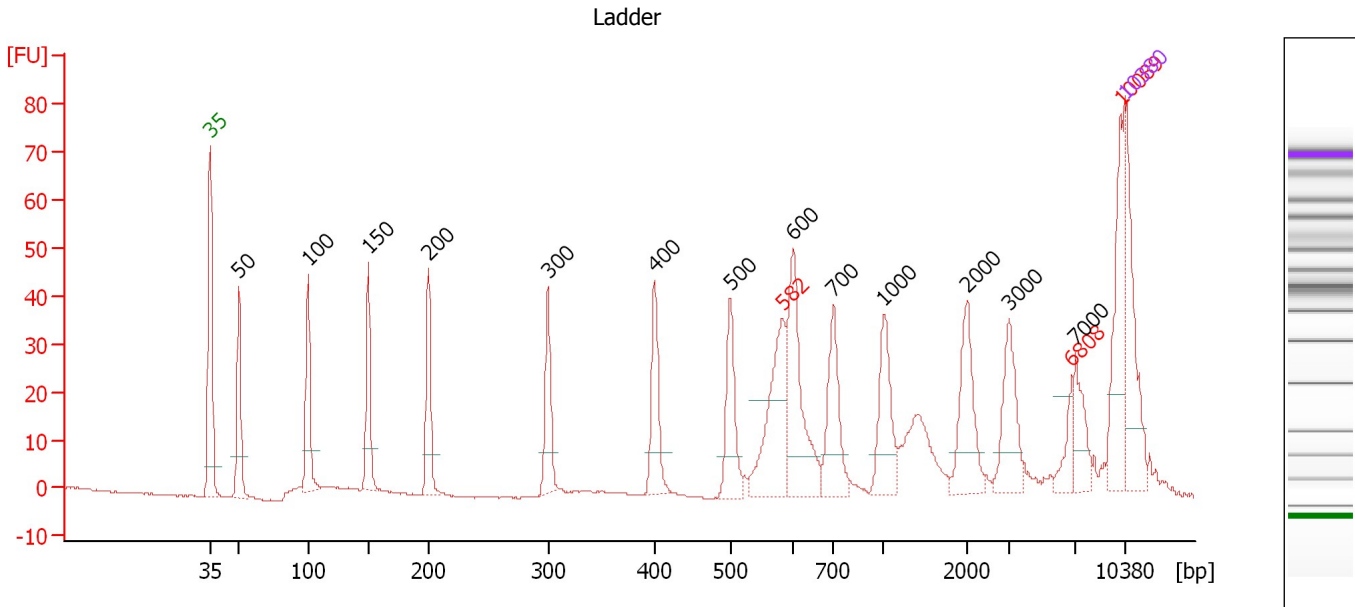
Ladder

Ladder Peak	Size	Area
1	35	160
2	50	210
3	100	208
4	150	221
5	200	242
6	300	270
7	400	305
8	500	306
9	600	336
10	700	321
11	1000	366
12	2000	413
13	3000	411
14	7000	400
15	10380	214

Assay Class: High Sensitivity DNA Assay
 Data Path: C:\...ents and Settings\Bioanalyzer\2012-08-14\2012-08-14_001.xad

Created: 8/14/2012 9:09:24 AM
 Modified: 8/14/2012 9:51:33 AM

Electropherogram Summary



Overall Results for Ladder

Noise: 0.1

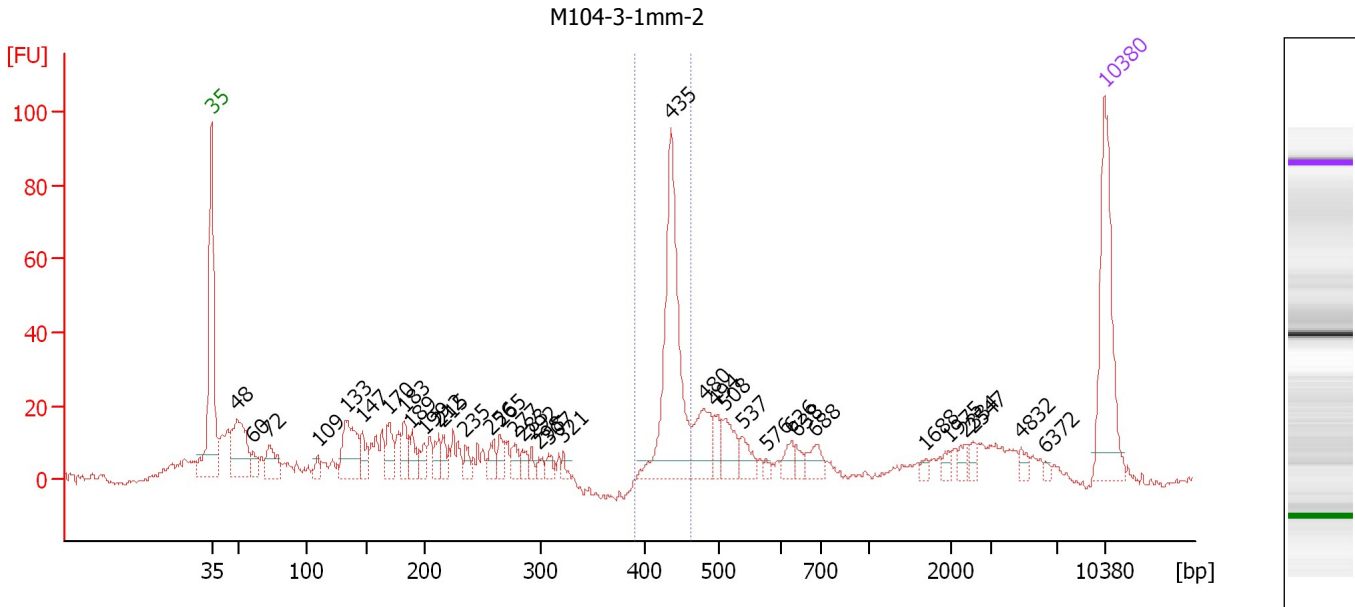
Peak table for Ladder

Peak	Size [bp]	Conc. [pg/μl]	Molarity [pmol/l]	Observations
1	35	125.00	5,411.3	Lower Marker
2	50	150.00	4,545.5	Ladder Peak
3	100	150.00	2,272.7	Ladder Peak
4	150	150.00	1,515.2	Ladder Peak
5	200	150.00	1,136.4	Ladder Peak
6	300	150.00	757.6	Ladder Peak
7	400	150.00	568.2	Ladder Peak
8	500	150.00	454.5	Ladder Peak
9	582	0.00	0.0	excluded peak
10	600	150.00	378.8	Ladder Peak
11	700	150.00	324.7	Ladder Peak
12	1,000	150.00	227.3	Ladder Peak
13	2,000	150.00	113.6	Ladder Peak
14	3,000	150.00	75.8	Ladder Peak
15	6,808	0.00	0.0	excluded peak
16	7,000	150.00	32.5	Ladder Peak
17	10,089	0.00	0.0	excluded peak
18	10,380	75.00	10.9	Upper Marker

Assay Class: High Sensitivity DNA Assay
 Data Path: C:\...ents and Settings\Bioanalyzer\2012-08-14\2012-08-14_001.xad

Created: 8/14/2012 9:09:24 AM
 Modified: 8/14/2012 9:51:33 AM

Electropherogram Summary Continued ...



Overall Results for sample 1 : M104-3-1mm-2

Number of peaks found: 36 Corr. Area 1: 157.5
 Noise: 0.8

Peak table for sample 1 : M104-3-1mm-2


Peak	Size [bp]	Conc. [pg/μl]	Molarity [pmol/l]	Observations
1	35	125.00	5,411.3	Lower Marker
2	48	76.60	2,401.4	
3	60	14.39	361.4	
4	72	30.68	647.8	
5	109	8.23	114.2	
6	133	60.42	687.3	
7	147	21.00	216.1	
8	170	22.37	199.5	
9	183	21.86	181.4	
10	189	17.81	142.8	
11	199	10.84	82.4	
12	212	14.32	102.5	
13	215	12.73	89.6	
14	235	10.26	66.1	
15	256	12.02	71.0	
16	265	12.74	72.9	
17	277	10.86	59.5	
18	283	9.68	51.7	
19	292	5.89	30.5	
20	298	6.56	33.3	
21	307	7.54	37.2	
22	321	5.00	23.6	
23	435	166.44	579.8	
24	480	38.14	120.5	
25	494	15.25	46.8	
26	508	25.06	74.7	

Assay Class: High Sensitivity DNA Assay
 Data Path: C:\...ents and Settings\Bioanalyzer\2012-08-14\2012-08-14_001.xad

Created: 8/14/2012 9:09:24 AM
 Modified: 8/14/2012 9:51:33 AM

Electropherogram Summary Continued ...

... Peak table for sample 1 : M104-3-1mm-2

Peak	Size [bp]	Conc. [pg/μl]	Molarity [pmol/l]	Observations
27	537	15.53	43.8	
28	576	3.18	8.4	
29	626	10.25	24.8	
30	638	6.60	15.7	
31	688	14.67	32.3	
32	1,688	3.34	3.0	
33	1,975	4.18	3.2	
34	2,334	5.21	3.4	
35	2,547	4.96	2.9	
36	4,832	5.04	1.6	
37	6,372	1.91	0.5	
38	 10,380	75.00	10.9	Upper Marker

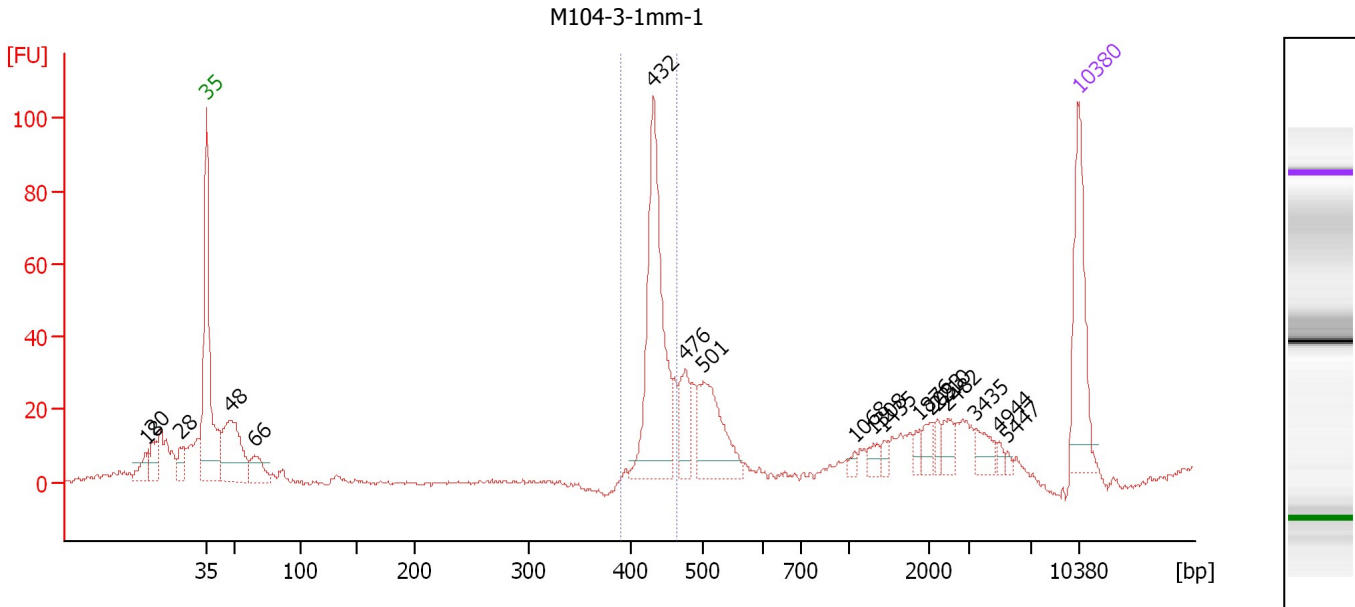
Region table for sample 1 : M104-3-1mm-2

From [bp]	To [bp]	Average Size [bp]	Molarity [pmol/l]	Conc. [pg/μl]	Corr. Area	% of Total	Size distribution in CV [%]	Color
389	463	436	572.6	164.59	157.5	19	2.7	

Assay Class: High Sensitivity DNA Assay
 Data Path: C:\...ents and Settings\Bioanalyzer\2012-08-14\2012-08-14_001.xad

Created: 8/14/2012 9:09:24 AM
 Modified: 8/14/2012 9:51:33 AM

Electropherogram Summary Continued ...



Overall Results for sample 2 : M104-3-1mm-1

Number of peaks found: 18 Corr. Area 1: 196.4
 Noise: 0.6

Peak table for sample 2 : M104-3-1mm-1

Peak	Size [bp]	Conc. [pg/μl]	Molarity [pmol/l]	Observations
1	18	0.00	0.0	
2	20	0.00	0.0	
3	28	0.00	0.0	
4	35	125.00	5,411.3	Lower Marker
5	48	117.07	3,668.7	
6	66	32.68	751.3	
7	432	216.19	758.2	
8	476	40.29	128.4	
9	501	90.51	273.8	
10	1,068	4.57	6.5	
11	1,308	8.69	10.1	
12	1,435	5.42	5.7	
13	1,876	7.77	6.3	
14	2,033	11.36	8.5	
15	2,210	7.08	4.9	
16	2,482	12.95	7.9	
17	3,435	15.51	6.8	
18	4,944	3.85	1.2	
19	5,447	2.32	0.6	
20	10,380	75.00	10.9	Upper Marker

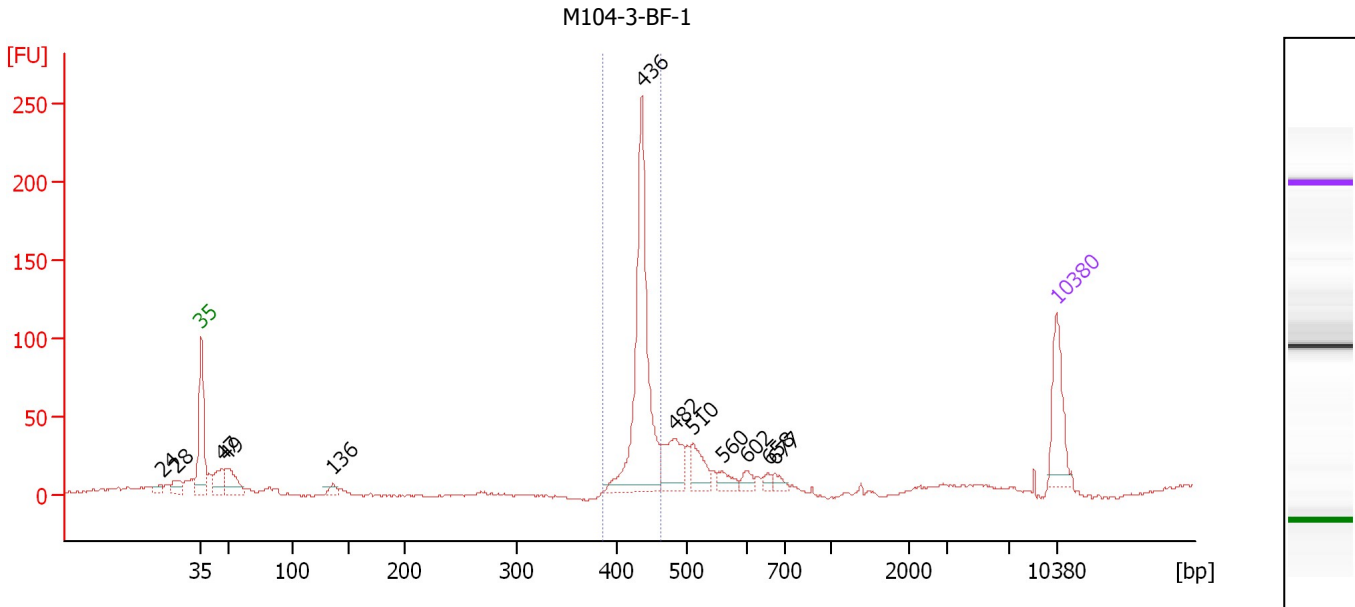
Region table for sample 2 : M104-3-1mm-1

From [bp]	To [bp]	Average Size [bp]	Molarity [pmol/l]	Conc. [pg/μl]	Corr. Area	% of Total	Size distribution in CV [%]	Color
390	464	436	774.4	222.74	196.4	28	2.8	Blue

Assay Class: High Sensitivity DNA Assay
 Data Path: C:\...ents and Settings\Bioanalyzer\2012-08-14\2012-08-14_001.xad

Created: 8/14/2012 9:09:24 AM
 Modified: 8/14/2012 9:51:33 AM

Electropherogram Summary Continued ...



Overall Results for sample 3 : M104-3-BF-1

Number of peaks found: 12 Corr. Area 1: 352.4
 Noise: 0.9

Peak table for sample 3 : M104-3-BF-1

Peak	Size [bp]	Conc. [pg/μl]	Molarity [pmol/l]	Observations
1	24	0.00	0.0	
2	28	0.00	0.0	
3	35	125.00	5,411.3	Lower Marker
4	47	51.24	1,658.7	
5	49	65.53	2,016.8	
6	136	15.19	169.3	
7	436	390.03	1,356.3	
8	482	83.70	263.3	
9	510	51.13	152.0	
10	560	20.83	56.4	
11	602	15.22	38.3	
12	658	9.35	21.5	
13	677	12.53	28.1	
14	10,380	75.00	10.9	Upper Marker

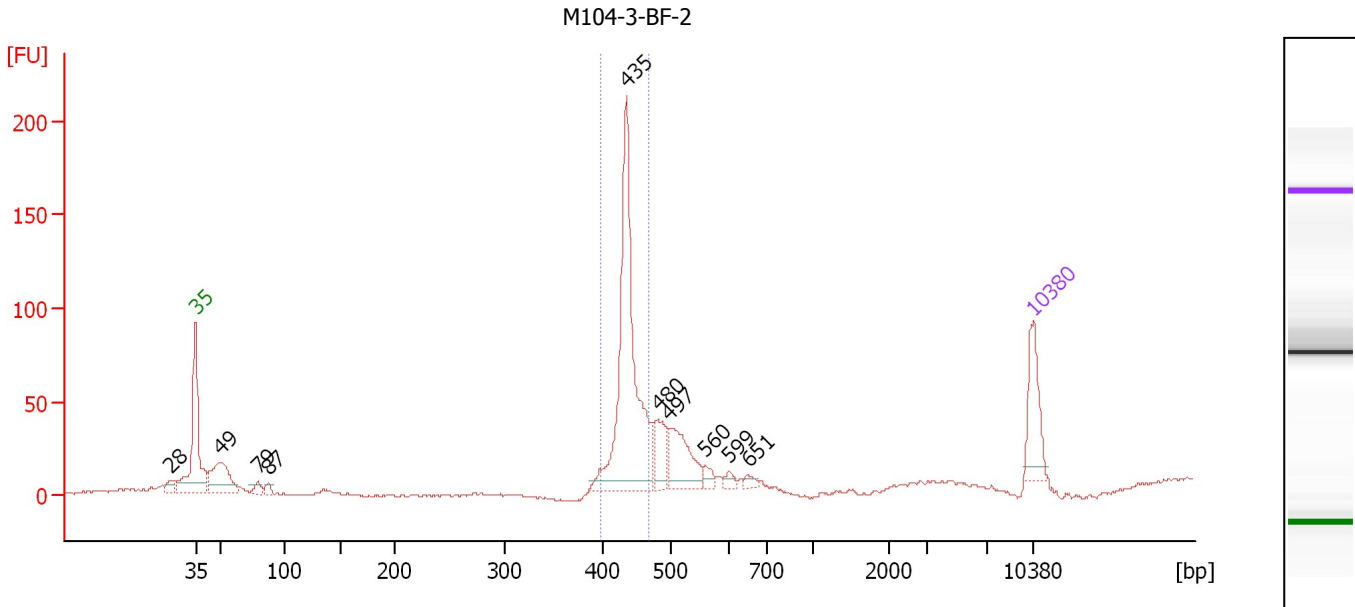
Region table for sample 3 : M104-3-BF-1

From [bp]	To [bp]	Average Size [bp]	Molarity [pmol/l]	Conc. [pg/μl]	Corr. Area	% of Total	Size distribution in CV [%]	Color
387	464	435	1,318.2	378.64	352.4	47	2.7	Blue

Assay Class: High Sensitivity DNA Assay
 Data Path: C:\...ents and Settings\Bioanalyzer\2012-08-14\2012-08-14_001.xad

Created: 8/14/2012 9:09:24 AM
 Modified: 8/14/2012 9:51:33 AM

Electropherogram Summary Continued ...



Overall Results for sample 4 : M104-3-BF-2

Number of peaks found: 10 Corr. Area 1: 340.0
 Noise: 0.7

Peak table for sample 4 : M104-3-BF-2

Peak	Size [bp]	Conc. [pg/μl]	Molarity [pmol/l]	Observations
1	28	0.00	0.0	
2	35	125.00	5,411.3	Lower Marker
3	49	138.95	4,277.4	
4	79	19.29	371.0	
5	87	13.08	227.3	
6	435	499.57	1,740.3	
7	480	66.74	210.5	
8	497	109.50	333.6	
9	560	16.77	45.4	
10	599	11.87	30.0	
11	651	9.72	22.6	
12	10,380	75.00	10.9	Upper Marker

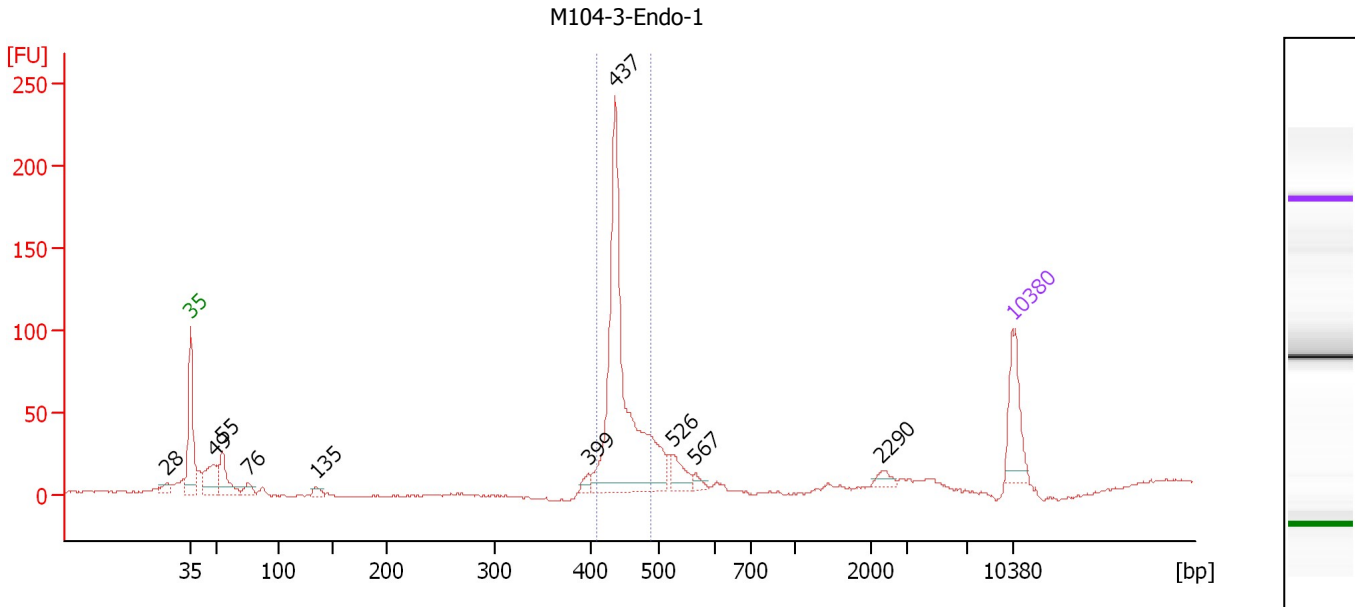
Region table for sample 4 : M104-3-BF-2

From [bp]	To [bp]	Average Size [bp]	Molarity [pmol/l]	Conc. [pg/μl]	Corr. Area	% of Total	Size distribution in CV [%]	Color
398	469	437	1,547.2	446.56	340.0	52	3.0	Blue

Assay Class: High Sensitivity DNA Assay
 Data Path: C:\...ents and Settings\Bioanalyzer\2012-08-14\2012-08-14_001.xad

Created: 8/14/2012 9:09:24 AM
 Modified: 8/14/2012 9:51:33 AM

Electropherogram Summary Continued ...



Overall Results for sample 5 : M104-3-Endo-1

Number of peaks found: 10 Corr. Area 1: 399.4
 Noise: 0.5

Peak table for sample 5 : M104-3-Endo-1

Peak	Size [bp]	Conc. [pg/μl]	Molarity [pmol/l]	Observations
1	28	0.00	0.0	
2	35	125.00	5,411.3	Lower Marker
3	49	87.63	2,735.2	
4	55	83.18	2,279.1	
5	76	23.18	463.1	
6	135	14.35	161.3	
7	399	12.44	47.3	
8	437	554.25	1,920.6	
9	526	40.97	117.9	
10	567	11.11	29.7	
11	2,290	11.56	7.6	
12	10,380	75.00	10.9	Upper Marker

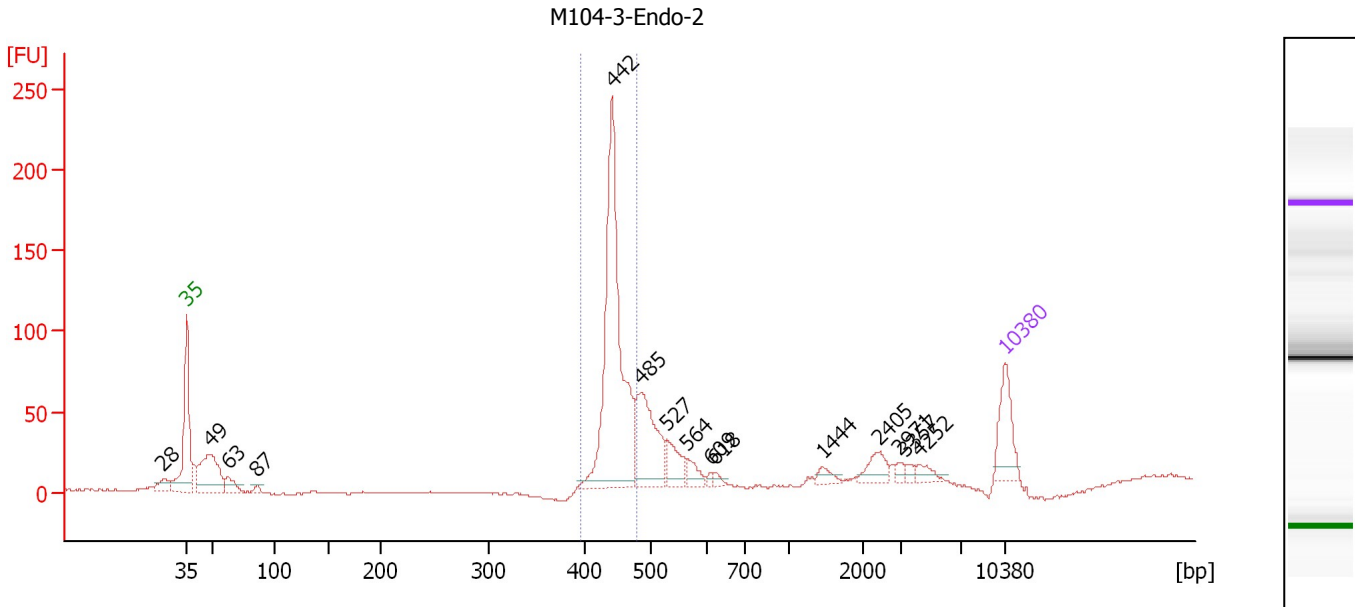
Region table for sample 5 : M104-3-Endo-1

From [bp]	To [bp]	Average Size [bp]	Molarity [pmol/l]	Conc. [pg/μl]	Corr. Area	% of Total	Size distribution in CV [%]	Color
409	490	444	1,583.6	464.53	399.4	62	3.9	Blue

Assay Class: High Sensitivity DNA Assay
 Data Path: C:\...ents and Settings\Bioanalyzer\2012-08-14\2012-08-14_001.xad

Created: 8/14/2012 9:09:24 AM
 Modified: 8/14/2012 9:51:33 AM

Electropherogram Summary Continued ...



Overall Results for sample 6 : M104-3-Endo-2

Number of peaks found: 15 Corr. Area 1: 453.6
 Noise: 0.6

Peak table for sample 6 : M104-3-Endo-2

Peak	Size [bp]	Conc. [pg/μl]	Molarity [pmol/l]	Observations
1	28	0.00	0.0	
2	35	125.00	5,411.3	Lower Marker
3	49	201.80	6,249.7	
4	63	44.56	1,076.5	
5	87	13.31	232.3	
6	442	603.63	2,067.1	
7	485	198.45	620.0	
8	527	61.75	177.4	
9	564	28.03	75.2	
10	609	6.35	15.8	
11	618	9.10	22.3	
12	1,444	16.76	17.6	
13	2,405	35.70	22.5	
14	2,971	9.25	4.7	
15	3,357	7.88	3.6	
16	4,252	17.23	6.1	
17	10,380	75.00	10.9	Upper Marker

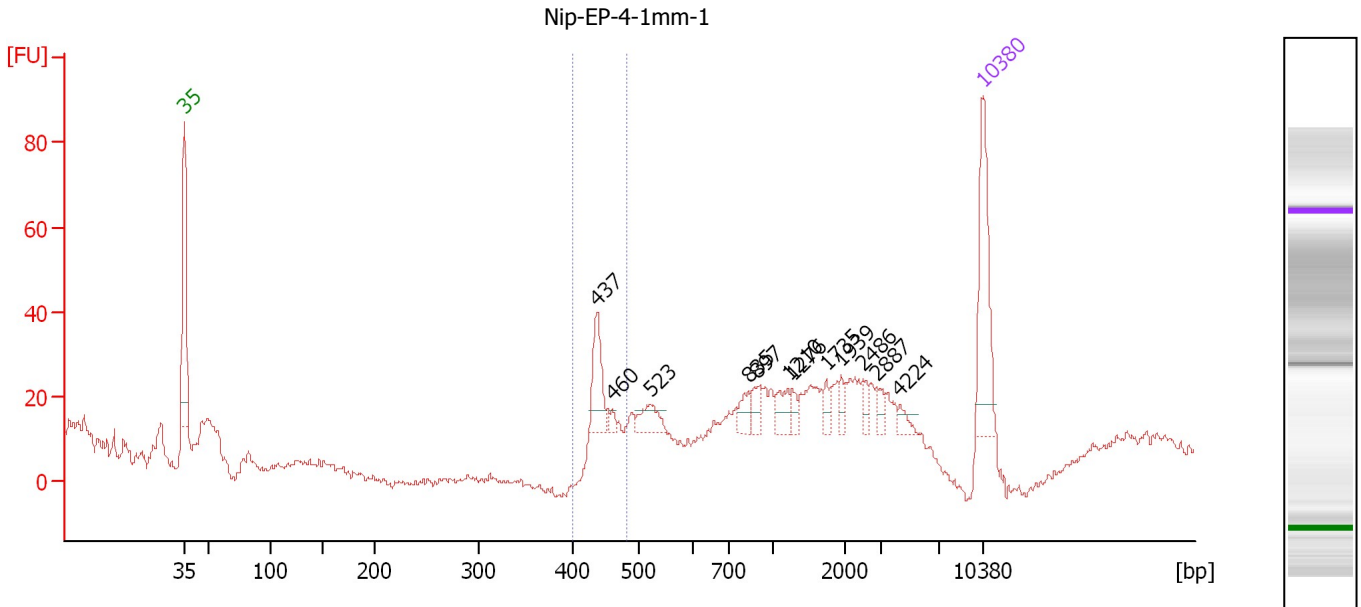
Region table for sample 6 : M104-3-Endo-2

From [bp]	To [bp]	Average Size [bp]	Molarity [pmol/l]	Conc. [pg/μl]	Corr. Area	% of Total	Size distribution in CV [%]	Color
397	479	446	2,052.3	604.06	453.6	51	3.2	Blue

Assay Class: High Sensitivity DNA Assay
 Data Path: C:\...ents and Settings\Bioanalyzer\2012-08-14\2012-08-14_001.xad

Created: 8/14/2012 9:09:24 AM
 Modified: 8/14/2012 9:51:33 AM

Electropherogram Summary Continued ...



Overall Results for sample 7 : Nip-EP-4-1mm-1

Number of peaks found: 12 Corr. Area 1: 44.1
 Noise: 0.9

Peak table for sample 7 : Nip-EP-4-1mm-1

Peak	Size [bp]	Conc. [pg/µl]	Molarity [pmol/l]	Observations
1	35	125.00	5,411.3	Lower Marker
2	437	48.54	168.1	
3	460	5.73	18.9	
4	523	22.78	66.0	
5	835	15.08	27.4	
6	897	14.84	25.1	
7	1,210	18.12	22.7	
8	1,276	8.79	10.4	
9	1,735	8.33	7.3	
10	1,939	8.85	6.9	
11	2,486	9.17	5.6	
12	2,887	8.75	4.6	
13	4,224	8.00	2.9	
14	10,380	75.00	10.9	Upper Marker

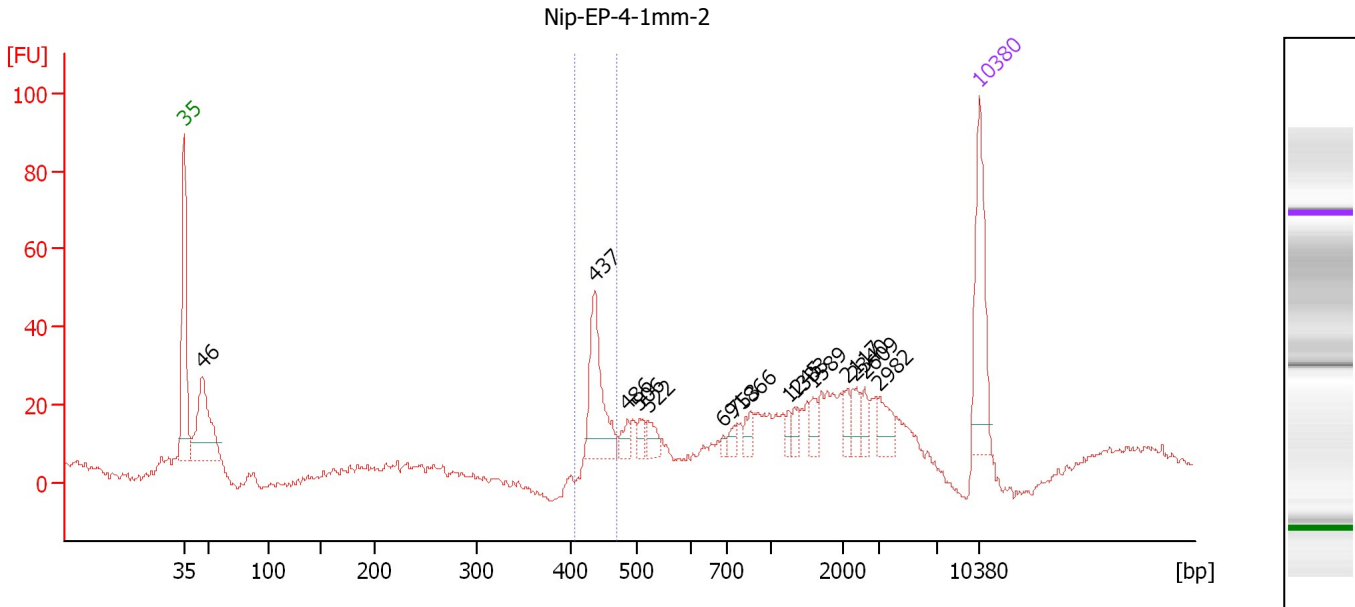
Region table for sample 7 : Nip-EP-4-1mm-1

From [bp]	To [bp]	Average Size [bp]	Molarity [pmol/l]	Conc. [pg/µl]	Corr. Area	% of Total	Size distribution in CV [%]	Color
401	482	444	228.2	66.83	44.1	15	2.7	Blue

Assay Class: High Sensitivity DNA Assay
 Data Path: C:\...ents and Settings\Bioanalyzer\2012-08-14\2012-08-14_001.xad

Created: 8/14/2012 9:09:24 AM
 Modified: 8/14/2012 9:51:33 AM

Electropherogram Summary Continued ...



Overall Results for sample 8 : Nip-EP-4-1mm-2

Number of peaks found: 15 Corr. Area 1: 74.5
 Noise: 0.9

Peak table for sample 8 : Nip-EP-4-1mm-2

Peak	Size [bp]	Conc. [pg/μl]	Molarity [pmol/l]	Observations
1	35	125.00	5,411.3	Lower Marker
2	46	139.77	4,566.2	
3	437	94.65	328.1	
4	486	13.68	42.6	
5	506	12.53	37.5	
6	522	16.15	46.9	
7	691	4.35	9.5	
8	753	8.41	16.9	
9	866	12.74	22.3	
10	1,245	8.04	9.8	
11	1,333	8.42	9.6	
12	1,589	11.95	11.4	
13	2,117	11.01	7.9	
14	2,340	16.55	10.7	
15	2,609	10.38	6.0	
16	2,982	19.74	10.0	
17	10,380	75.00	10.9	Upper Marker

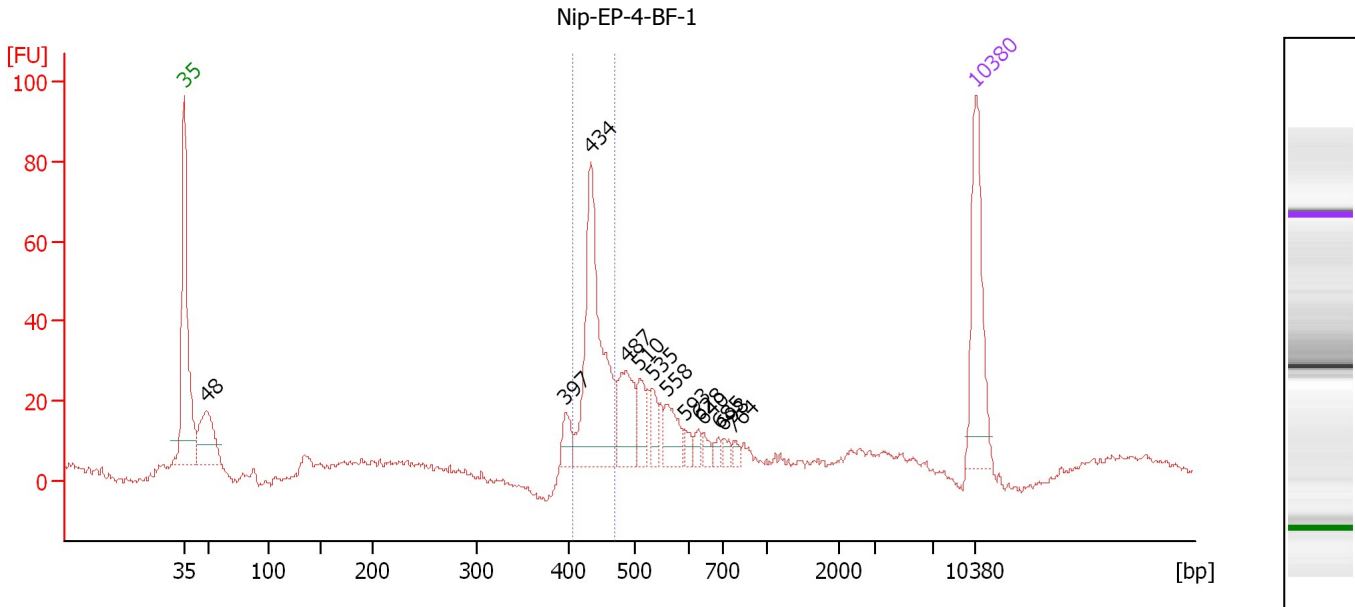
Region table for sample 8 : Nip-EP-4-1mm-2

From [bp]	To [bp]	Average Size [bp]	Molarity [pmol/l]	Conc. [pg/μl]	Corr. Area	% of Total	Size distribution in CV [%]	Color
406	471	442	345.1	100.63	74.5	15	2.5	Blue

Assay Class: High Sensitivity DNA Assay
 Data Path: C:\...ents and Settings\Bioanalyzer\2012-08-14\2012-08-14_001.xad

Created: 8/14/2012 9:09:24 AM
 Modified: 8/14/2012 9:51:33 AM

Electropherogram Summary Continued ...



Overall Results for sample 9 : Nip-EP-4-BF-1

Number of peaks found: 13 Corr. Area 1: 163.9
 Noise: 0.8

Peak table for sample 9 : Nip-EP-4-BF-1

Peak	Size [bp]	Conc. [pg/μl]	Molarity [pmol/l]	Observations
1	35	125.00	5,411.3	Lower Marker
2	48	78.26	2,449.3	
3	397	18.09	69.1	
4	434	183.98	641.8	
5	487	51.97	161.6	
6	510	24.16	71.8	
7	535	18.36	52.0	
8	558	27.99	76.0	
9	593	8.41	21.5	
10	628	7.75	18.7	
11	640	7.67	18.2	
12	685	6.64	14.7	
13	698	6.45	14.0	
14	764	4.97	9.9	
15	10,380	75.00	10.9	Upper Marker

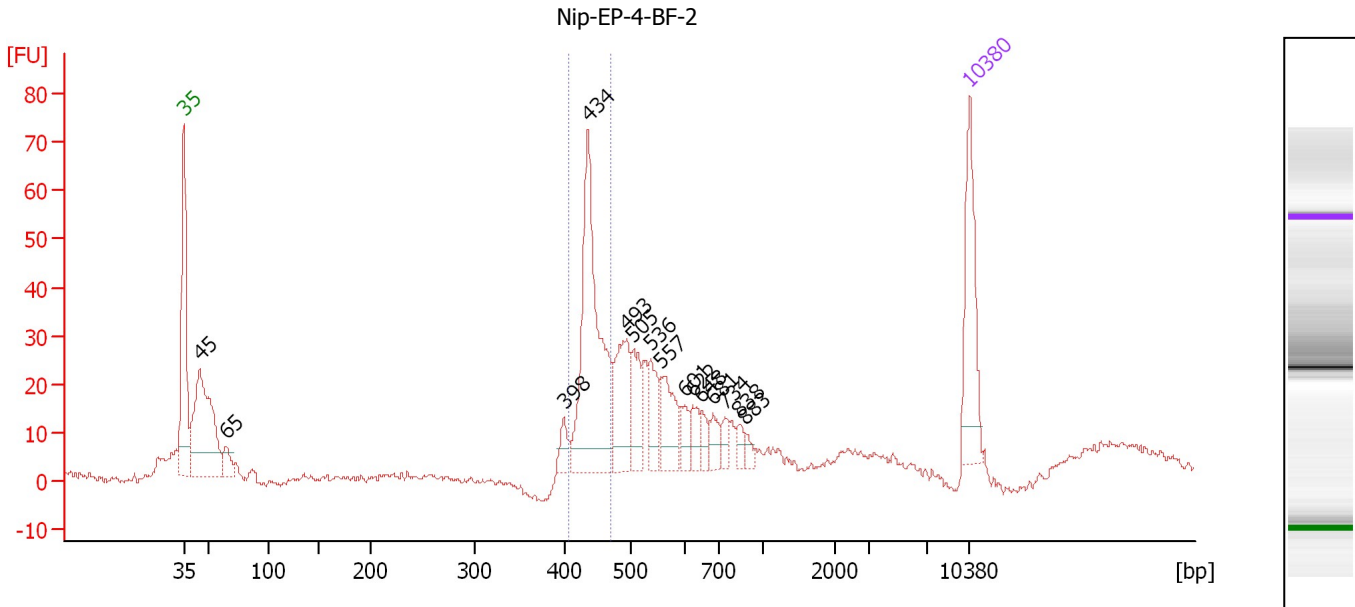
Region table for sample 9 : Nip-EP-4-BF-1

From [bp]	To [bp]	Average Size [bp]	Molarity [pmol/l]	Conc. [pg/μl]	Corr. Area	% of Total	Size distribution in CV [%]	Color
406	471	440	634.6	184.15	163.9	32	3.3	Blue

Assay Class: High Sensitivity DNA Assay
 Data Path: C:\...ents and Settings\Bioanalyzer\2012-08-14\2012-08-14_001.xad

Created: 8/14/2012 9:09:24 AM
 Modified: 8/14/2012 9:51:33 AM

Electropherogram Summary Continued ...



Overall Results for sample 10 : Nip-EP-4-BF-2

Number of peaks found: 15 Corr. Area 1: 147.8
 Noise: 0.8

Peak table for sample 10 : Nip-EP-4-BF-2

Peak	Size [bp]	Conc. [pg/μl]	Molarity [pmol/l]	Observations
1	35	125.00	5,411.3	Lower Marker
2	45	225.74	7,621.3	
3	65	25.53	595.4	
4	398	18.42	70.1	
5	434	242.06	844.2	
6	493	77.58	238.2	
7	505	43.52	130.6	
8	536	36.73	103.7	
9	557	50.67	137.8	
10	601	17.34	43.7	
11	622	18.95	46.1	
12	648	15.82	37.0	
13	681	17.15	38.2	
14	734	11.21	23.1	
15	838	10.66	19.3	
16	883	7.39	12.7	
17	10,380	75.00	10.9	Upper Marker

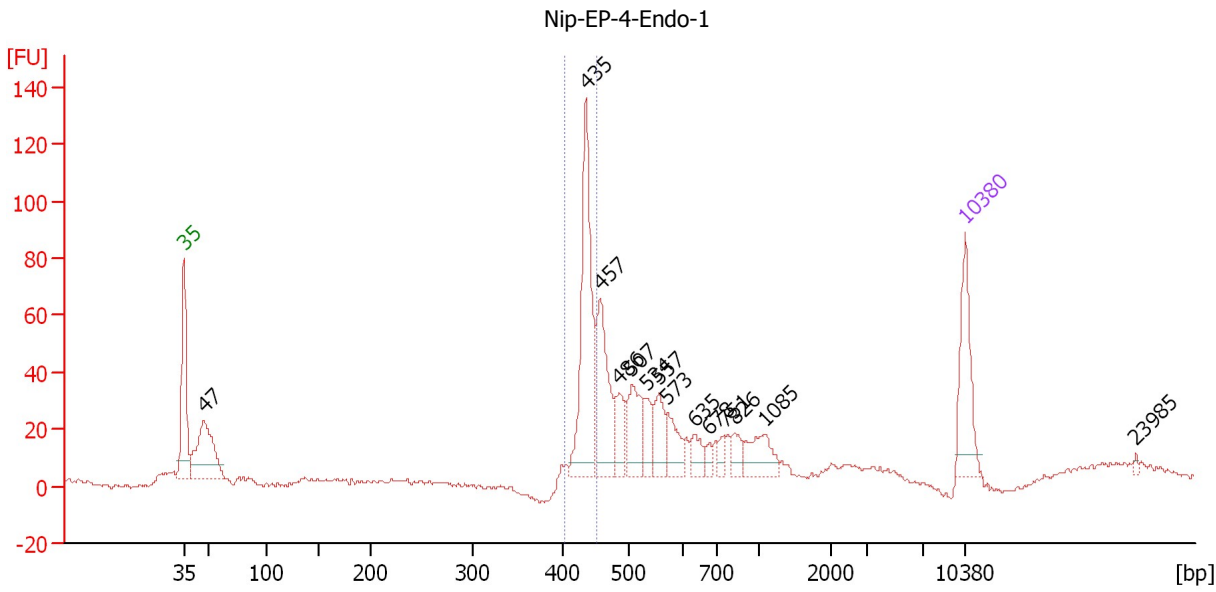
Region table for sample 10 : Nip-EP-4-BF-2

From [bp]	To [bp]	Average Size [bp]	Molarity [pmol/l]	Conc. [pg/μl]	Corr. Area	% of Total	Size distribution in CV [%]	Color
405	470	440	800.6	232.53	147.8	26	3.3	Blue

Assay Class: High Sensitivity DNA Assay
 Data Path: C:\...ents and Settings\Bioanalyzer\2012-08-14\2012-08-14_001.xad

Created: 8/14/2012 9:09:24 AM
 Modified: 8/14/2012 9:51:33 AM

Electropherogram Summary Continued ...



Overall Results for sample 11 : Nip-EP-4-Endo-1

Number of peaks found: 14 Corr. Area 1: 181.6
 Noise: 0.7

Peak table for sample 11 : Nip-EP-4-Endo-1

Peak	Size [bp]	Conc. [pg/μl]	Molarity [pmol/l]	Observations
1	35	125.00	5,411.3	Lower Marker
2	47	163.10	5,229.9	
3	435	237.45	827.9	
4	457	130.18	431.8	
5	486	43.34	135.2	
6	507	73.92	221.1	
7	534	34.79	98.6	
8	557	46.08	125.3	
9	573	41.49	109.7	
10	635	24.39	58.2	
11	678	10.87	24.3	
12	751	12.91	26.0	
13	826	19.52	35.8	
14	1,085	46.71	65.2	
15	10,380	75.00	10.9	Upper Marker
16	23,985	0.00	0.0	

Region table for sample 11 : Nip-EP-4-Endo-1

From [bp]	To [bp]	Average Size [bp]	Molarity [pmol/l]	Conc. [pg/μl]	Corr. Area	% of Total	Size distribution in CV [%]	Color
402	451	435	860.2	246.92	181.6	24	2.0	Blue

Assay Class: High Sensitivity DNA Assay
Data Path: C:\...ents and Settings\Bioanalyzer\2012-08-14\2012-08-14_001.xad

Created: 8/14/2012 9:09:24 AM
Modified: 8/14/2012 9:51:33 AM

Gel Image

