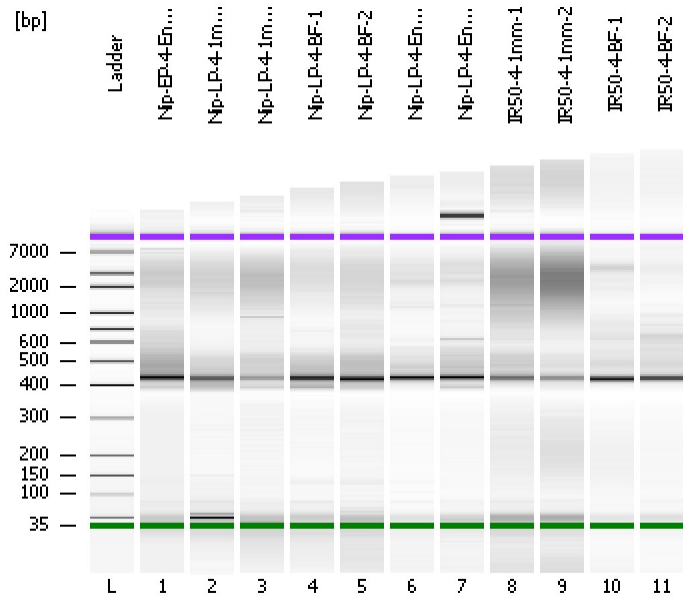


Assay Class: High Sensitivity DNA Assay  
Data Path: C:\...ents and Settings\Bioanalyzer\2012-08-14\2012-08-14\_002.xad

Created: 8/14/2012 9:53:23 AM  
Modified: 8/14/2012 10:40:33 AM

### Electrophoresis File Run Summary



#### Instrument Information:

Instrument Name: DE13701086      Firmware: C.01.069  
Serial#: DE13701086      Type: G2938B

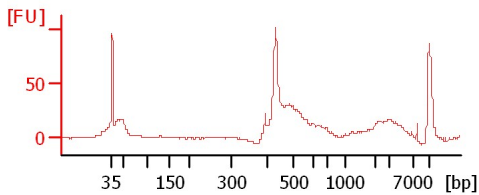
#### Assay Information:

Assay Origin Path: C:\Program Files\Agilent\2100 bioanalyzer\2100 expert\assays\dsDNA\High Sensitivity DNA.xsy  
Assay Class: High Sensitivity DNA Assay  
Version: 1.03  
Assay Comments: Copyright © 2003-2010 Agilent Technologies

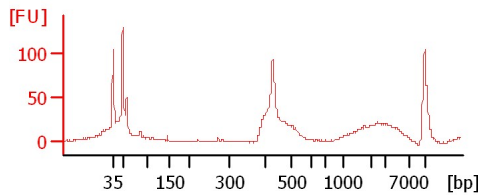
#### Chip Information:

Chip Lot #:   
Reagent Kit Lot #:   
Chip Comments:

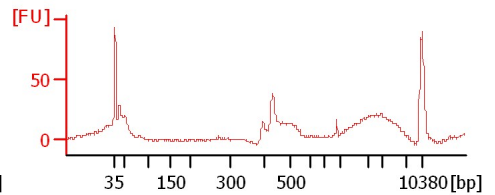
Nip-EP-4-Endo-2



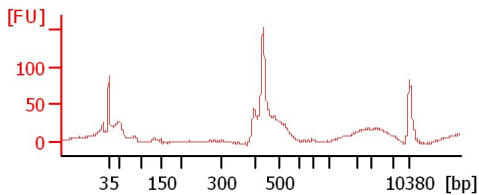
Nip-LP-4-1mm-1



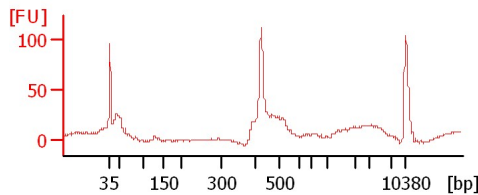
Nip-LP-4-1mm-2



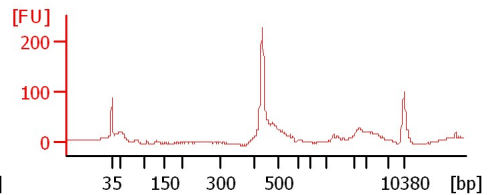
Nip-LP-4-BF-1



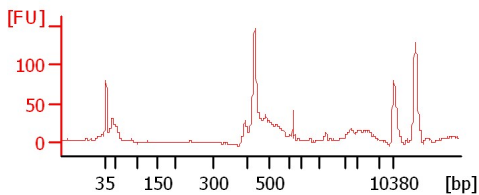
Nip-LP-4-BF-2



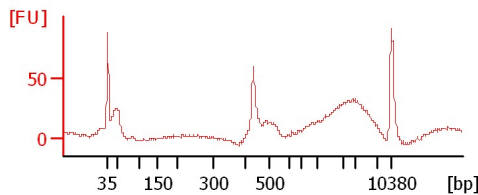
Nip-LP-4-Endo-1



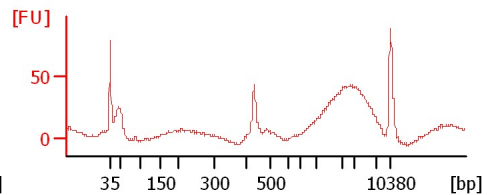
Nip-LP-4-Endo-2



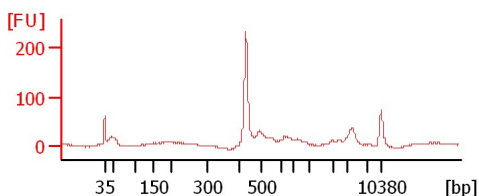
IR50-4-1mm-1



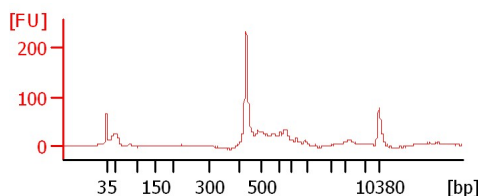
IR50-4-1mm-2



IR50-4-BF-1



IR50-4-BF-2



Assay Class: High Sensitivity DNA Assay  
 Data Path: C:\...ents and Settings\Bioanalyzer\2012-08-14\2012-08-14\_002.xad

Created: 8/14/2012 9:53:23 AM  
 Modified: 8/14/2012 10:40:33 AM

**Electrophoresis File Run Summary (Chip Summary)**

Sample Name	Sample Comment	Rest. Digest	Status	Observation	Result Label	Result Color
Nip-EP-4-Endo-2		<input type="checkbox"/>	✓			
Nip-LP-4-1mm-1		<input type="checkbox"/>	✓			
Nip-LP-4-1mm-2		<input type="checkbox"/>	✓			
Nip-LP-4-BF-1		<input type="checkbox"/>	✓			
Nip-LP-4-BF-2		<input type="checkbox"/>	✓			
Nip-LP-4-Endo-1		<input type="checkbox"/>	✓			
Nip-LP-4-Endo-2		<input type="checkbox"/>	✓			
IR50-4-1mm-1		<input type="checkbox"/>	✓			
IR50-4-1mm-2		<input type="checkbox"/>	✓			
IR50-4-BF-1		<input type="checkbox"/>	✓			
IR50-4-BF-2		<input type="checkbox"/>	✓			
Ladder		<input type="checkbox"/>	✓			

**Chip Lot #**

**Reagent Kit Lot #**

**Chip Comments :**

Assay Class: High Sensitivity DNA Assay  
Data Path: C:\...ents and Settings\Bioanalyzer\2012-08-14\2012-08-14\_002.xad

Created: 8/14/2012 9:53:23 AM  
Modified: 8/14/2012 10:40:33 AM

**Electrophoresis Assay Details**

**General Analysis Settings**

Number of Available Sample and Ladder Wells (Max.) : 12  
Minimum Visible Range [s] : 32  
Maximum Visible Range [s] : 138  
Start Analysis Time Range [s] : 33  
End Analysis Time Range [s] : 137.5  
Ladder Concentration [pg/μl] : 1950  
Uses Standard Area for Ladder Fragments  
Lower Marker Concentration [pg/μl] : 125  
Upper Marker Concentration [pg/μl] : 75  
Used Upper Marker for Quantitation  
Standard Curve Fit is Point to Point  
Show Data Aligned to Lower and Upper Marker

**Integrator Settings**

Integration Start Time [s] : 33.05  
Integration End Time [s] : 137  
Slope Threshold : 0.8  
Height Threshold [FU] : 5  
Area Threshold : 0.1  
Width Threshold [s] : 0.6  
Baseline Plateau [s] : 0.5

**Filter Settings**

Filter Width [s] : 0.5  
Polynomial Order : 4

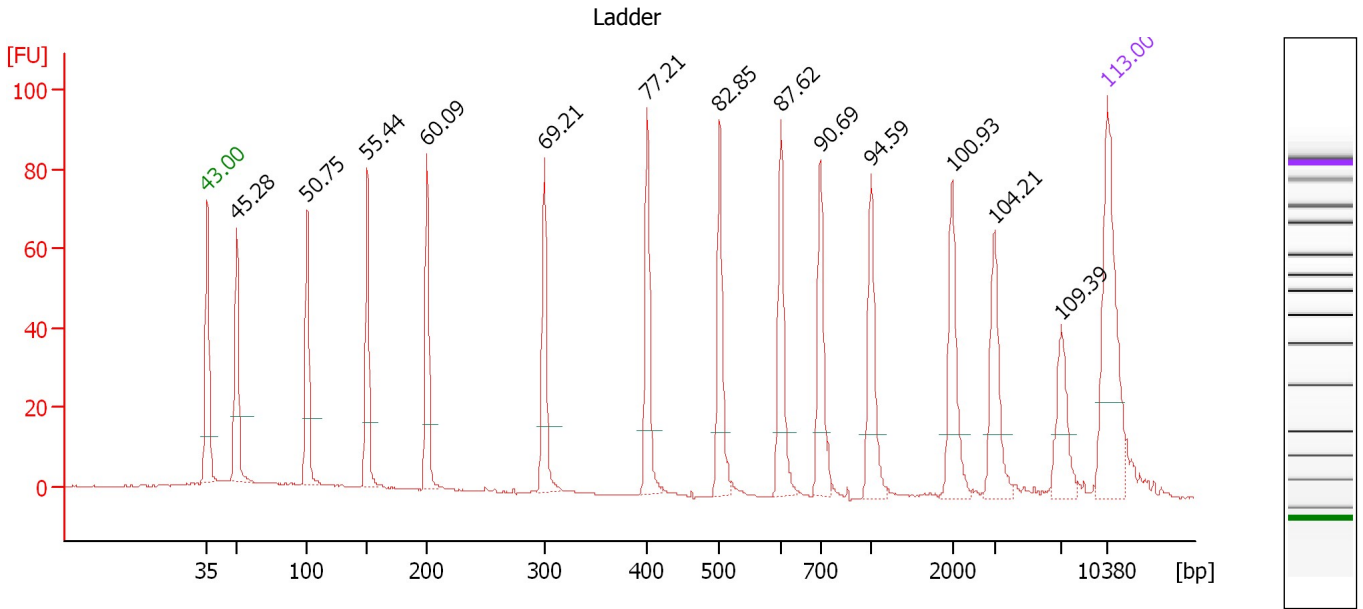
**Ladder**

Ladder Peak	Size	Area
1	35	160
2	50	210
3	100	208
4	150	221
5	200	242
6	300	270
7	400	305
8	500	306
9	600	336
10	700	321
11	1000	366
12	2000	413
13	3000	411
14	7000	400
15	10380	214

Assay Class: High Sensitivity DNA Assay  
 Data Path: C:\...ents and Settings\Bioanalyzer\2012-08-14\2012-08-14\_002.xad

Created: 8/14/2012 9:53:23 AM  
 Modified: 8/14/2012 10:40:33 AM

**Electropherogram Summary**



**Overall Results for Ladder**

Noise: 0.2

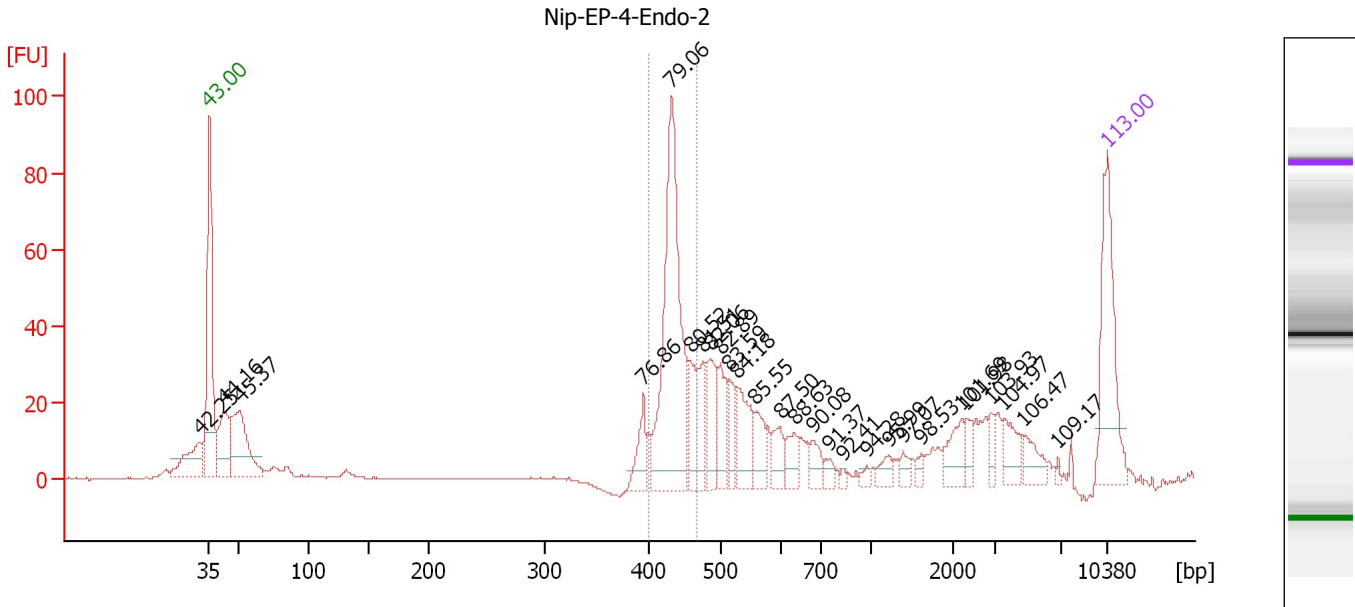
**Peak table for Ladder**

Peak	Size [bp]	Conc. [pg/μl]	Molarity [pmol/l]	Observations
1	35	125.00	5,411.3	Lower Marker
2	50	150.00	4,545.5	Ladder Peak
3	100	150.00	2,272.7	Ladder Peak
4	150	150.00	1,515.2	Ladder Peak
5	200	150.00	1,136.4	Ladder Peak
6	300	150.00	757.6	Ladder Peak
7	400	150.00	568.2	Ladder Peak
8	500	150.00	454.5	Ladder Peak
9	600	150.00	378.8	Ladder Peak
10	700	150.00	324.7	Ladder Peak
11	1,000	150.00	227.3	Ladder Peak
12	2,000	150.00	113.6	Ladder Peak
13	3,000	150.00	75.8	Ladder Peak
14	7,000	150.00	32.5	Ladder Peak
15	10,380	75.00	10.9	Upper Marker

Assay Class: High Sensitivity DNA Assay  
 Data Path: C:\...ents and Settings\Bioanalyzer\2012-08-14\2012-08-14\_002.xad

Created: 8/14/2012 9:53:23 AM  
 Modified: 8/14/2012 10:40:33 AM

**Electropherogram Summary Continued ...**



**Overall Results for sample 1 : Nip-EP-4-Endo-2**

Number of peaks found: 27                      Corr. Area 1: 212.5  
 Noise: 0.2


**Peak table for sample 1 : Nip-EP-4-Endo-2**

Peak	Size [bp]	Conc. [pg/μl]	Molarity [pmol/l]	Observations
1	32	0.00	0.0	
2	35	125.00	5,411.3	Lower Marker
3	43	70.58	2,506.8	
4	51	104.25	3,108.0	
5	396	29.02	111.2	
6	433	229.91	804.9	
7	459	33.49	110.6	
8	476	32.92	104.7	
9	486	41.78	130.3	
10	501	34.30	103.8	
11	516	21.93	64.5	
12	528	44.86	128.8	
13	557	24.63	67.1	
14	598	20.14	51.1	
15	633	18.91	45.3	
16	680	16.28	36.3	
17	753	8.08	16.3	
18	833	2.89	5.3	
19	977	4.29	6.6	
20	1,221	9.77	12.1	
21	1,391	6.69	7.3	
22	1,621	4.79	4.5	
23	2,230	21.61	14.7	
24	2,319	10.24	6.7	
25	2,916	8.79	4.6	
26	3,590	20.32	8.6	

Assay Class: High Sensitivity DNA Assay  
Data Path: C:\...ents and Settings\Bioanalyzer\2012-08-14\2012-08-14\_002.xad

Created: 8/14/2012 9:53:23 AM  
Modified: 8/14/2012 10:40:33 AM

**Electropherogram Summary Continued ...****... Peak table for sample 1 : Nip-EP-4-Endo-2**

Peak	Size [bp]	Conc. [pg/ $\mu$ l]	Molarity [pmol/l]	Observations
27	4,745	16.05	5.1	
28	6,831	2.10	0.5	
29	 10,380	75.00	10.9	Upper Marker

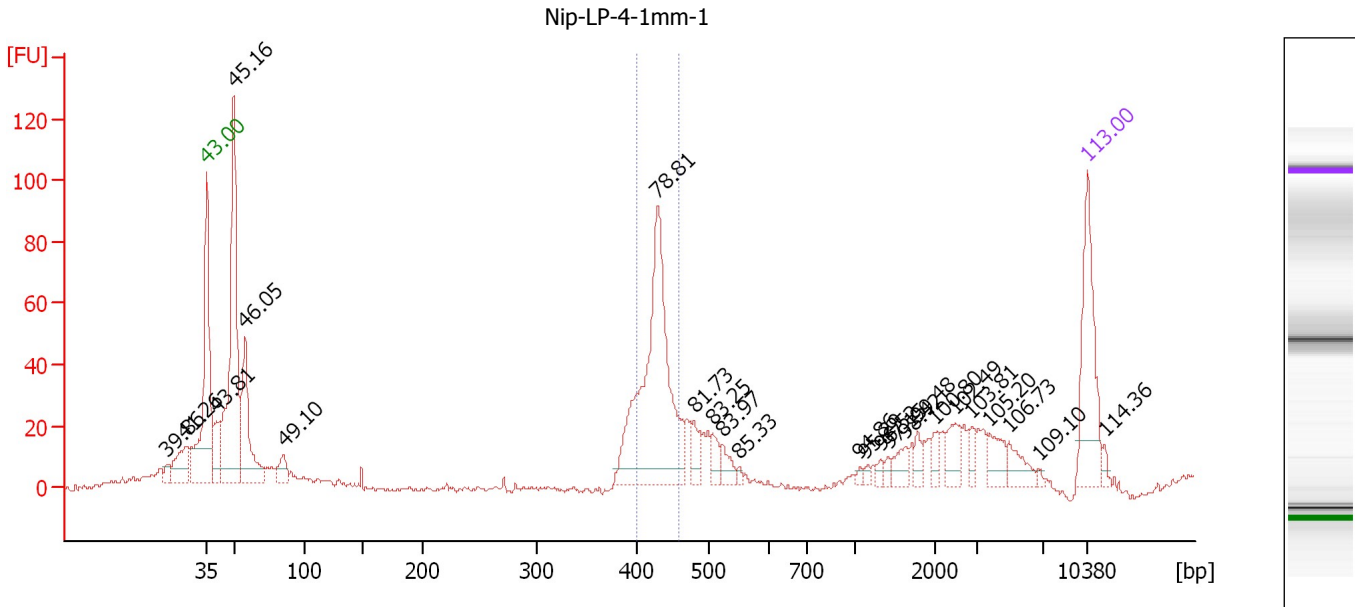
**Region table for sample 1 : Nip-EP-4-Endo-2**

From [bp]	To [bp]	Average Size [bp]	Molarity [pmol/l]	Conc. [pg/ $\mu$ l]	Corr. Area	% of Total	Size distribution in CV [%]	Color
400	467	436	858.6	247.00	212.5	28	3.3	

Assay Class: High Sensitivity DNA Assay  
 Data Path: C:\...ents and Settings\Bioanalyzer\2012-08-14\2012-08-14\_002.xad

Created: 8/14/2012 9:53:23 AM  
 Modified: 8/14/2012 10:40:33 AM

**Electropherogram Summary Continued ...**



**Overall Results for sample 2 : Nip-LP-4-1mm-1**

Number of peaks found: 24                      Corr. Area 1: 210.2  
 Noise: 0.8

**Peak table for sample 2 : Nip-LP-4-1mm-1**

Peak	Size [bp]	Conc. [pg/μl]	Molarity [pmol/l]	Observations
1	24	0.00	0.0	
2	29	0.00	0.0	
3	35	125.00	5,411.3	Lower Marker
4	40	45.77	1,721.2	
5	49	316.99	9,759.5	
6	57	129.08	3,429.2	
7	85	25.57	456.4	
8	428	286.47	1,013.6	
9	480	22.32	70.4	
10	508	14.83	44.2	
11	524	15.95	46.2	
12	552	3.39	9.3	
13	1,044	2.80	4.1	
14	1,110	3.77	5.2	
15	1,304	4.35	5.1	
16	1,404	4.80	5.2	
17	1,605	13.06	12.3	
18	1,772	10.57	9.0	
19	1,979	10.21	7.8	
20	2,476	18.77	11.5	
21	2,877	9.00	4.7	
22	3,768	18.33	7.4	
23	4,945	17.10	5.2	
24	6,776	2.02	0.5	
25	10,380	75.00	10.9	Upper Marker
26	11,650	0.00	0.0	

Assay Class: High Sensitivity DNA Assay  
Data Path: C:\...ents and Settings\Bioanalyzer\2012-08-14\2012-08-14\_002.xad

Created: 8/14/2012 9:53:23 AM  
Modified: 8/14/2012 10:40:33 AM

**Electropherogram Summary Continued ...**

... Region table for sample 2 : Nip-LP-4-1mm-1

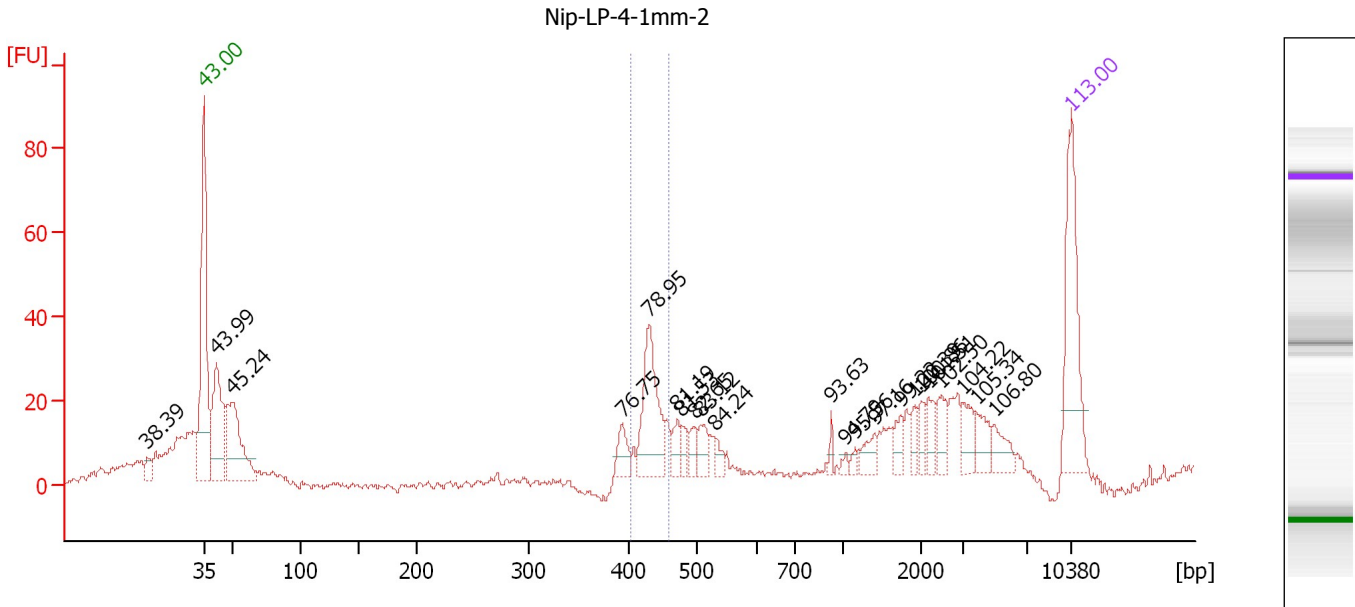
From [bp]	To [bp]	Average Size [bp]	Molarity [pmol/l]	Conc. [pg/μl]	Corr. Area	% of Total	Size distribution in CV [%]	Color
399	460	428	806.4	227.71	210.2	21	3.4	■



Assay Class: High Sensitivity DNA Assay  
 Data Path: C:\...ents and Settings\Bioanalyzer\2012-08-14\2012-08-14\_002.xad

Created: 8/14/2012 9:53:23 AM  
 Modified: 8/14/2012 10:40:33 AM

**Electropherogram Summary Continued ...**



**Overall Results for sample 3 : Nip-LP-4-1mm-2**

Number of peaks found: 22                      Corr. Area 1: 70.9  
 Noise: 1.0

**Peak table for sample 3 : Nip-LP-4-1mm-2**

Peak	Size [bp]	Conc. [pg/μl]	Molarity [pmol/l]	Observations
1	19	0.00	0.0	
2	35	125.00	5,411.3	Lower Marker
3	42	123.21	4,497.0	
4	50	113.41	3,455.8	
5	394	19.44	74.7	
6	431	79.90	281.0	
7	470	14.40	46.4	
8	477	10.52	33.5	
9	496	10.97	33.5	
10	506	17.13	51.3	
11	529	8.88	25.4	
12	926	4.45	7.3	
13	1,032	3.46	5.1	
14	1,154	3.33	4.4	
15	1,405	12.49	13.5	
16	1,731	10.48	9.2	
17	1,914	9.12	7.2	
18	1,989	9.74	7.4	
19	2,175	12.91	9.0	
20	2,477	15.87	9.7	
21	3,007	15.35	7.7	
22	3,871	15.11	5.9	
23	5,000	14.66	4.4	
24	10,380	75.00	10.9	Upper Marker

Assay Class: High Sensitivity DNA Assay  
Data Path: C:\...ents and Settings\Bioanalyzer\2012-08-14\2012-08-14\_002.xad

Created: 8/14/2012 9:53:23 AM  
Modified: 8/14/2012 10:40:33 AM

**Electropherogram Summary Continued ...**

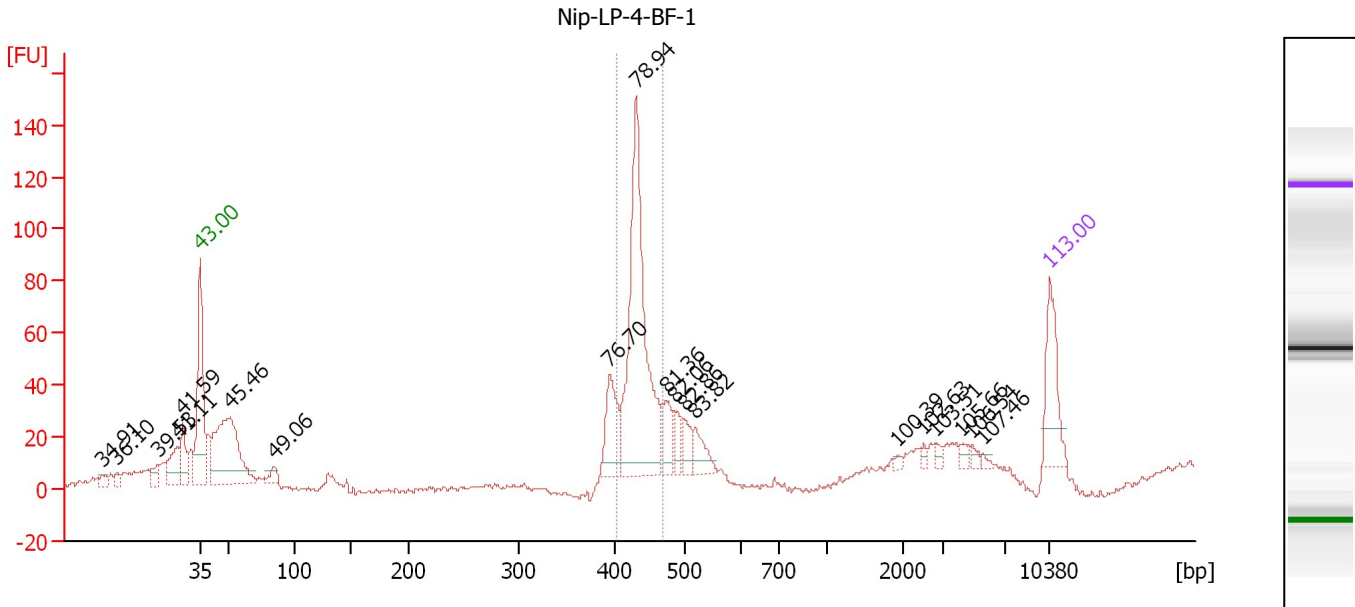
... Region table for sample 3 : Nip-LP-4-1mm-2

From [bp]	To [bp]	Average Size [bp]	Molarity [pmol/l]	Conc. [pg/μl]	Corr. Area	% of Total	Size distribution in CV [%]	Color
406	460	434	311.0	89.06	70.9	12	2.8	■

Assay Class: High Sensitivity DNA Assay  
 Data Path: C:\...ents and Settings\Bioanalyzer\2012-08-14\2012-08-14\_002.xad

Created: 8/14/2012 9:53:23 AM  
 Modified: 8/14/2012 10:40:33 AM

**Electropherogram Summary Continued ...**



**Overall Results for sample 4 : Nip-LP-4-BF-1**

Number of peaks found: 19                      Corr. Area 1: 286.1  
 Noise: 0.9

**Peak table for sample 4 : Nip-LP-4-BF-1**

Peak	Size [bp]	Conc. [pg/μl]	Molarity [pmol/l]	Observations
1	7	0.00	0.0	
2	11	0.00	0.0	
3	23	0.00	0.0	
4	28	0.00	0.0	
5	30	0.00	0.0	
6	35	125.00	5,411.3	Lower Marker
7	52	326.25	9,571.5	
8	85	22.84	409.3	
9	394	92.38	355.6	
10	431	442.07	1,555.1	
11	474	48.43	154.9	
12	486	29.24	91.2	
13	500	36.01	109.1	
14	520	39.71	115.6	
15	1,914	4.46	3.5	
16	2,518	5.85	3.5	
17	2,786	8.54	4.6	
18	4,121	9.19	3.4	
19	4,799	7.23	2.3	
20	5,512	3.82	1.0	
21	10,380	75.00	10.9	Upper Marker

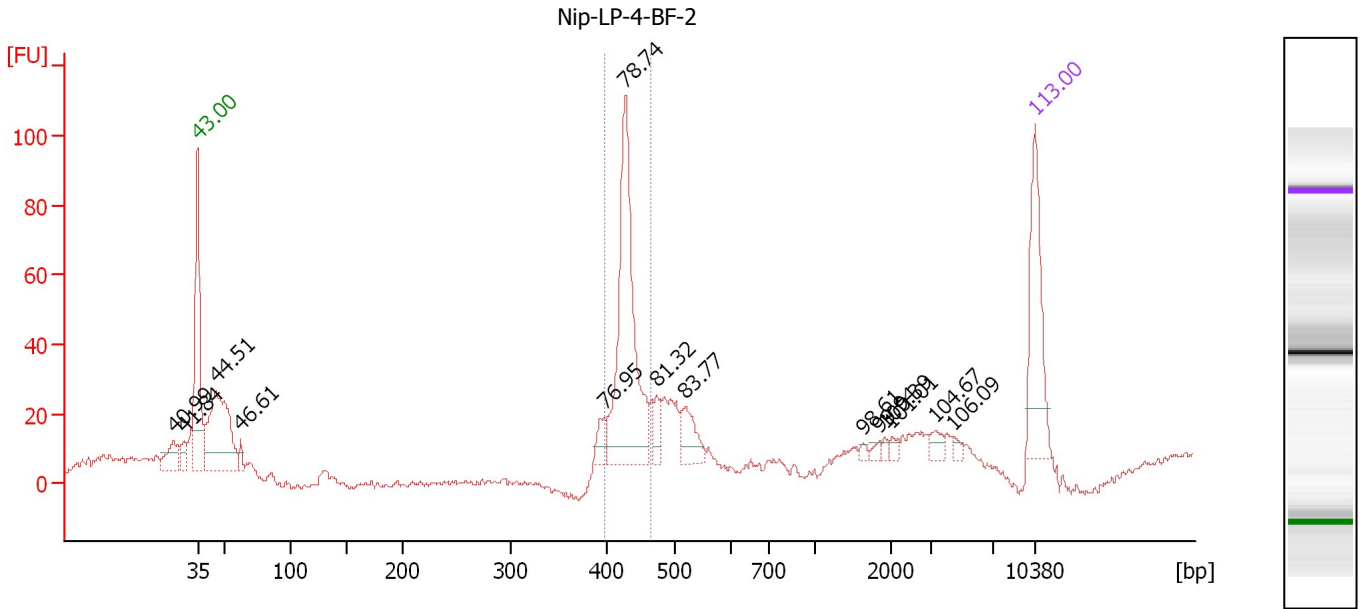
**Region table for sample 4 : Nip-LP-4-BF-1**

From [bp]	To [bp]	Average Size [bp]	Molarity [pmol/l]	Conc. [pg/μl]	Corr. Area	% of Total	Size distribution in CV [%]	Color
402	469	433	1,591.1	455.07	286.1	35	3.4	Blue

Assay Class: High Sensitivity DNA Assay  
 Data Path: C:\...ents and Settings\Bioanalyzer\2012-08-14\2012-08-14\_002.xad

Created: 8/14/2012 9:53:23 AM  
 Modified: 8/14/2012 10:40:33 AM

**Electropherogram Summary Continued ...**



**Overall Results for sample 5 : Nip-LP-4-BF-2**

Number of peaks found: 14      Corr. Area 1: 196.7  
 Noise: 0.9

**Peak table for sample 5 : Nip-LP-4-BF-2**

Peak	Size [bp]	Conc. [pg/μl]	Molarity [pmol/l]	Observations
1	28	0.00	0.0	
2	31	0.00	0.0	
3	35	125.00	5,411.3	Lower Marker
4	45	193.93	6,534.8	
5	62	10.67	260.3	
6	397	17.83	68.1	
7	427	233.08	827.1	
8	473	16.14	51.7	
9	519	33.63	98.1	
10	1,634	3.54	3.3	
11	1,844	4.27	3.5	
12	1,915	3.12	2.5	
13	2,025	4.95	3.7	
14	3,354	8.02	3.6	
15	4,455	4.50	1.5	
16	10,380	75.00	10.9	Upper Marker

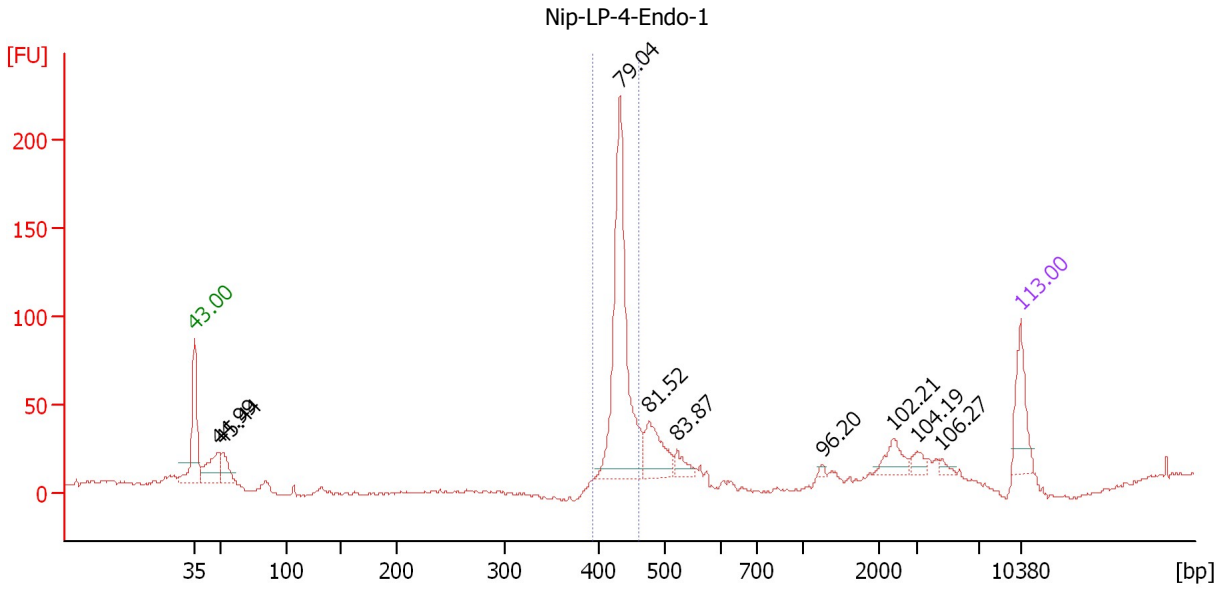
**Region table for sample 5 : Nip-LP-4-BF-2**

From [bp]	To [bp]	Average Size [bp]	Molarity [pmol/l]	Conc. [pg/μl]	Corr. Area	% of Total	Size distribution in CV [%]	Color
398	464	430	813.2	230.58	196.7	38	3.1	Blue

Assay Class: High Sensitivity DNA Assay  
 Data Path: C:\...ents and Settings\Bioanalyzer\2012-08-14\2012-08-14\_002.xad

Created: 8/14/2012 9:53:23 AM  
 Modified: 8/14/2012 10:40:33 AM

**Electropherogram Summary Continued ...**



**Overall Results for sample 6 : Nip-LP-4-Endo-1**

Number of peaks found: 9                      Corr. Area 1: 332.9  
 Noise: 1.0

**Peak table for sample 6 : Nip-LP-4-Endo-1**

Peak	Size [bp]	Conc. [pg/µl]	Molarity [pmol/l]	Observations
1	35	125.00	5,411.3	Lower Marker
2	48	108.18	3,409.9	
3	51	61.83	1,821.0	
4	432	503.42	1,764.1	
5	476	105.13	334.3	
6	521	29.36	85.3	
7	1,254	4.40	5.3	
8	2,389	37.42	23.7	
9	2,995	16.32	8.3	
10	4,591	8.00	2.6	
11	10,380	75.00	10.9	Upper Marker

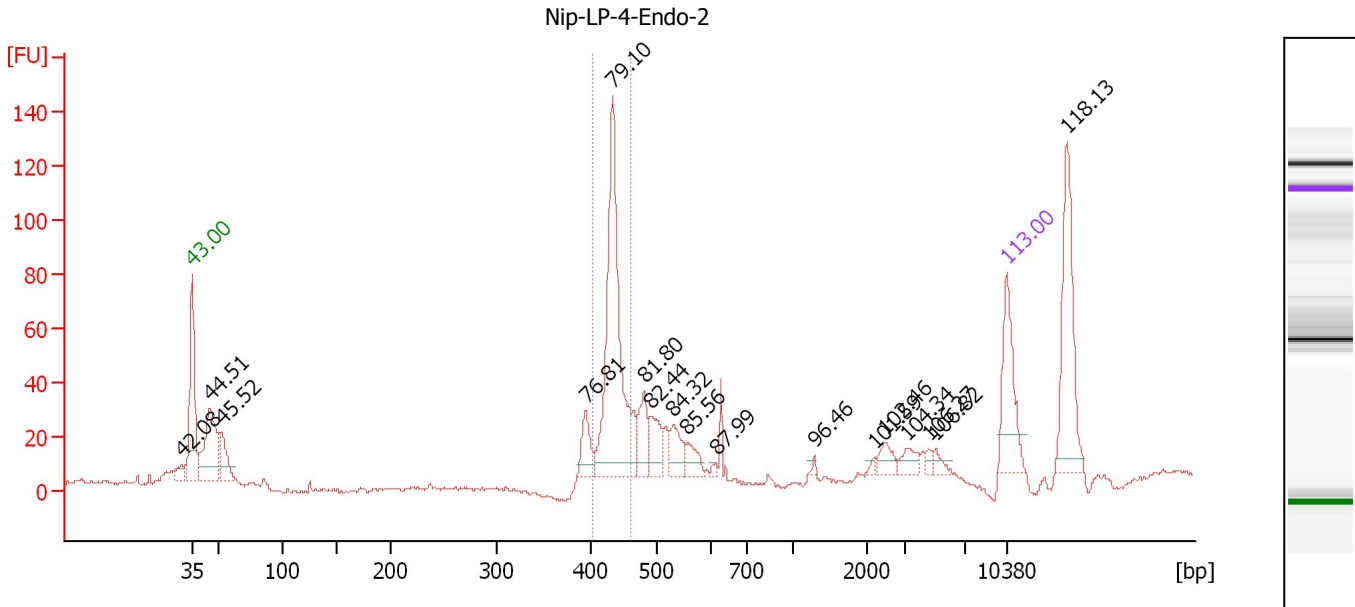
**Region table for sample 6 : Nip-LP-4-Endo-1**

From [bp]	To [bp]	Average Size [bp]	Molarity [pmol/l]	Conc. [pg/µl]	Corr. Area	% of Total	Size distribution in CV [%]	Color
394	460	433	1,696.3	484.84	332.9	51	2.5	Blue

Assay Class: High Sensitivity DNA Assay  
 Data Path: C:\...ents and Settings\Bioanalyzer\2012-08-14\2012-08-14\_002.xad

Created: 8/14/2012 9:53:23 AM  
 Modified: 8/14/2012 10:40:33 AM

**Electropherogram Summary Continued ...**



**Overall Results for sample 7 : Nip-LP-4-Endo-2**

Number of peaks found: 17                      Corr. Area 1: 219.4  
 Noise: 0.8

**Peak table for sample 7 : Nip-LP-4-Endo-2**

Peak	Size [bp]	Conc. [pg/μl]	Molarity [pmol/l]	Observations
1	32	0.00	0.0	
2	35	125.00	5,411.3	Lower Marker
3	45	172.80	5,825.5	
4	52	64.60	1,875.7	
5	395	41.97	161.0	
6	433	349.92	1,223.1	
7	481	49.46	155.7	
8	493	47.68	146.6	
9	531	36.57	104.4	
10	557	24.59	66.9	
11	612	4.25	10.5	
12	1,295	3.20	3.7	
13	2,202	3.84	2.6	
14	2,467	17.16	10.5	
15	3,103	16.84	8.2	
16	4,587	6.13	2.0	
17	5,012	8.58	2.6	
18	10,380	75.00	10.9	Upper Marker
19	15,187	0.00	0.0	

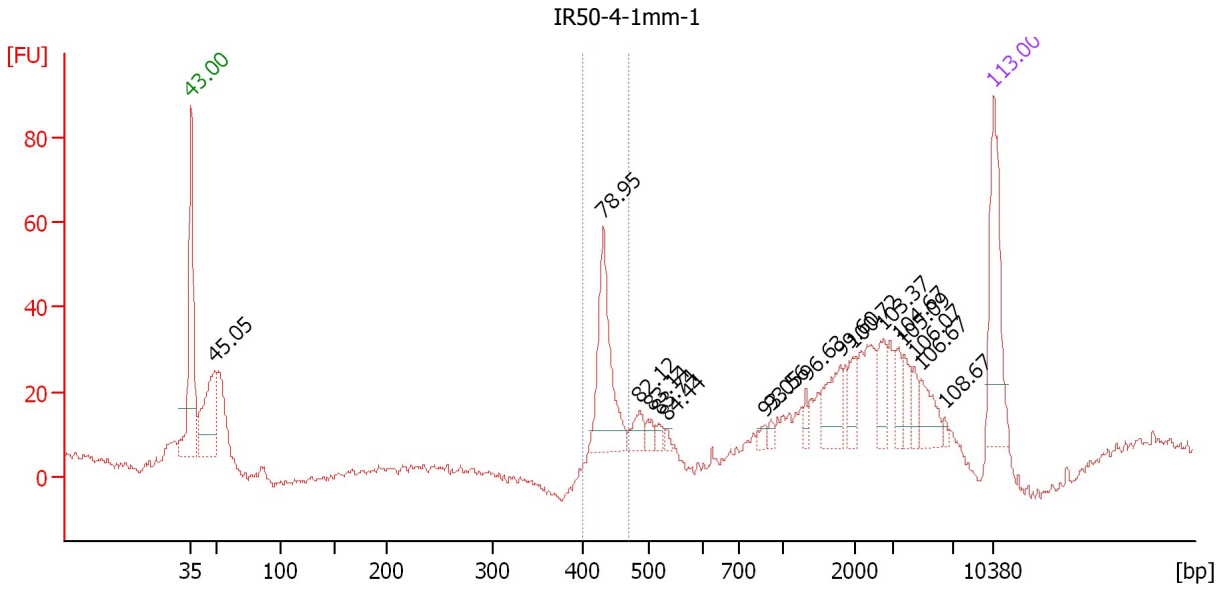
**Region table for sample 7 : Nip-LP-4-Endo-2**

From [bp]	To [bp]	Average Size [bp]	Molarity [pmol/l]	Conc. [pg/μl]	Corr. Area	% of Total	Size distribution in CV [%]	Color
405	462	435	1,139.5	327.15	219.4	31	2.6	Blue

Assay Class: High Sensitivity DNA Assay  
 Data Path: C:\...ents and Settings\Bioanalyzer\2012-08-14\2012-08-14\_002.xad

Created: 8/14/2012 9:53:23 AM  
 Modified: 8/14/2012 10:40:33 AM

**Electropherogram Summary Continued ...**



**Overall Results for sample 8 : IR50-4-1mm-1**

Number of peaks found: 17                      Corr. Area 1: 80.8  
 Noise: 1.0

**Peak table for sample 8 : IR50-4-1mm-1**

Peak	Size [bp]	Conc. [pg/µl]	Molarity [pmol/l]	Observations
1	35	125.00	5,411.3	Lower Marker
2	48	124.51	3,893.0	
3	431	116.33	409.1	
4	487	19.02	59.2	
5	506	10.06	30.1	
6	519	6.96	20.3	
7	533	4.06	11.5	
8	881	6.39	11.0	
9	921	4.87	8.0	
10	1,322	8.09	9.3	
11	1,791	34.38	29.1	
12	1,967	18.98	14.6	
13	2,745	21.91	12.1	
14	3,360	15.85	7.1	
15	3,683	16.03	6.6	
16	4,436	11.39	3.9	
17	4,903	23.01	7.1	
18	6,446	3.67	0.9	
19	10,380	75.00	10.9	Upper Marker

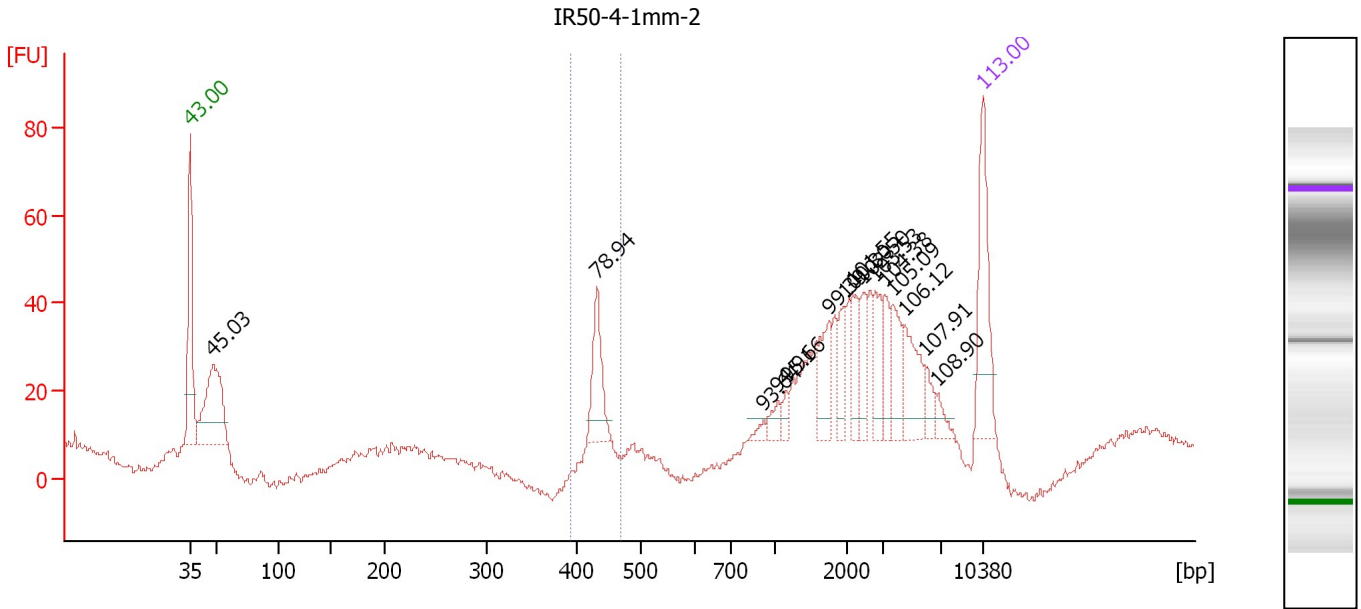
**Region table for sample 8 : IR50-4-1mm-1**

From [bp]	To [bp]	Average Size [bp]	Molarity [pmol/l]	Conc. [pg/µl]	Corr. Area	% of Total	Size distribution in CV [%]	Color
399	470	435	388.2	111.40	80.8	18	2.6	Blue

Assay Class: High Sensitivity DNA Assay  
 Data Path: C:\...ents and Settings\Bioanalyzer\2012-08-14\2012-08-14\_002.xad

Created: 8/14/2012 9:53:23 AM  
 Modified: 8/14/2012 10:40:33 AM

**Electropherogram Summary Continued ...**



**Overall Results for sample 9 : IR50-4-1mm-2**

Number of peaks found: 15                      Corr. Area 1: 40.3  
 Noise: 0.9

**Peak table for sample 9 : IR50-4-1mm-2**

Peak	Size [bp]	Conc. [pg/µl]	Molarity [pmol/l]	Observations
1	35	125.00	5,411.3	Lower Marker
2	48	167.62	5,255.9	
3	431	65.87	231.7	
4	927	6.15	10.1	
5	1,051	12.81	18.5	
6	1,170	8.49	11.0	
7	1,756	37.22	32.1	
8	1,979	24.79	19.0	
9	2,189	25.26	17.5	
10	2,477	25.48	15.6	
11	2,793	30.44	16.5	
12	3,132	24.22	11.7	
13	3,677	33.95	14.0	
14	4,477	45.98	15.6	
15	5,858	14.76	3.8	
16	6,622	10.58	2.4	
17	10,380	75.00	10.9	Upper Marker

**Region table for sample 9 : IR50-4-1mm-2**

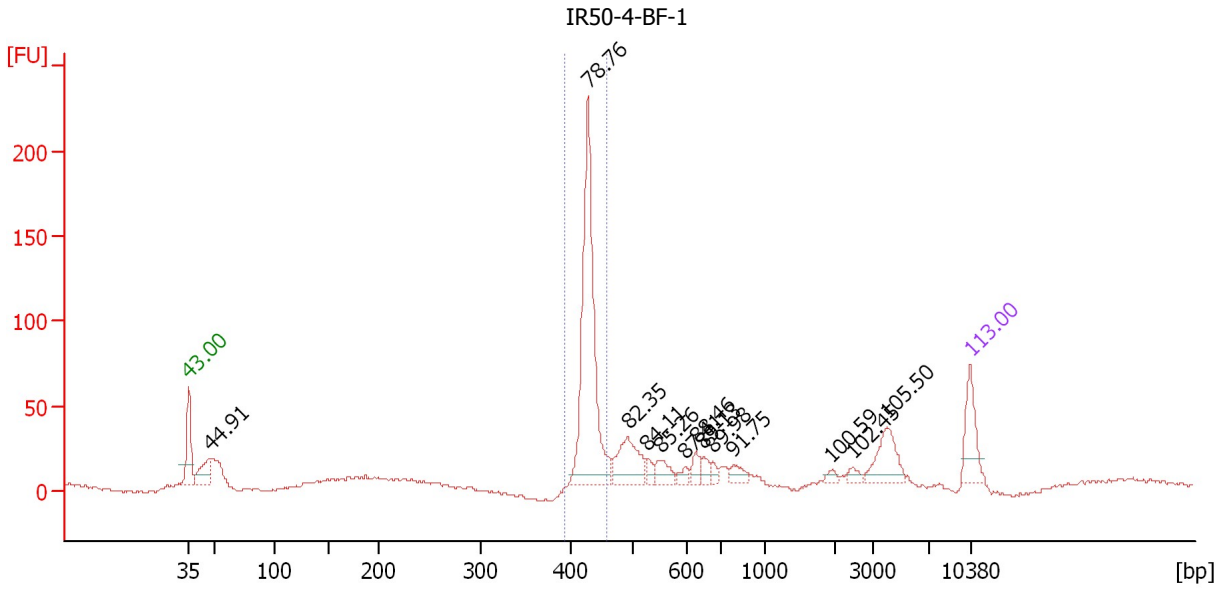
From [bp]	To [bp]	Average Size [bp]	Molarity [pmol/l]	Conc. [pg/µl]	Corr. Area	% of Total	Size distribution in CV [%]	Color
393	467	432	223.7	63.70	40.3	8	1.6	Blue



Assay Class: High Sensitivity DNA Assay  
 Data Path: C:\...ents and Settings\Bioanalyzer\2012-08-14\2012-08-14\_002.xad

Created: 8/14/2012 9:53:23 AM  
 Modified: 8/14/2012 10:40:33 AM

**Electropherogram Summary Continued ...**



**Overall Results for sample 10 : IR50-4-BF-1**

Number of peaks found: 13      Corr. Area 1: 332.1  
 Noise: 0.9

**Peak table for sample 10 : IR50-4-BF-1**

Peak	Size [bp]	Conc. [pg/μl]	Molarity [pmol/l]	Observations
1	35	125.00	5,411.3	Lower Marker
2	48	86.27	2,748.3	
3	428	565.12	2,002.8	
4	491	125.67	387.8	
5	526	18.48	53.2	
6	550	38.24	105.3	
7	596	16.69	42.5	
8	627	26.64	64.3	
9	649	21.98	51.3	
10	677	14.40	32.2	
11	782	26.18	50.7	
12	1,945	10.59	8.2	
13	2,462	13.50	8.3	
14	3,999	81.34	30.8	
15	10,380	75.00	10.9	Upper Marker

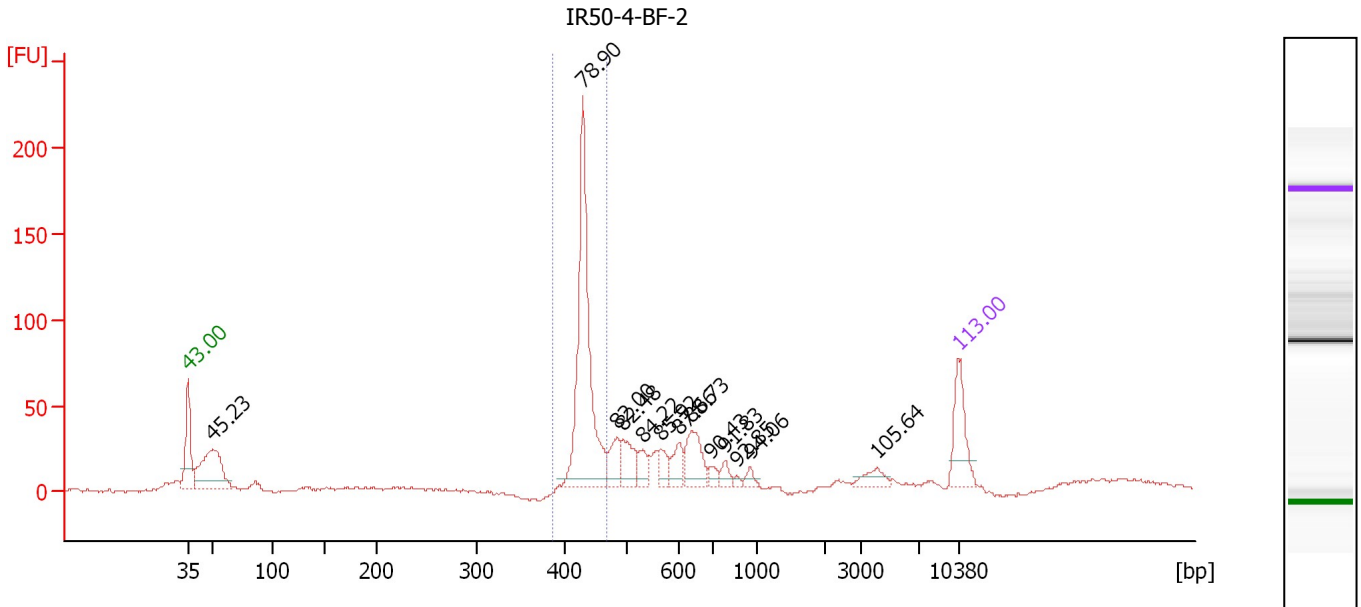
**Region table for sample 10 : IR50-4-BF-1**

From [bp]	To [bp]	Average Size [bp]	Molarity [pmol/l]	Conc. [pg/μl]	Corr. Area	% of Total	Size distribution in CV [%]	Color
394	456	428	1,964.6	555.53	332.1	39	2.3	Blue

Assay Class: High Sensitivity DNA Assay  
 Data Path: C:\...ents and Settings\Bioanalyzer\2012-08-14\2012-08-14\_002.xad

Created: 8/14/2012 9:53:23 AM  
 Modified: 8/14/2012 10:40:33 AM

**Electropherogram Summary Continued ...**



**Overall Results for sample 11 : IR50-4-BF-2**

Number of peaks found: 13      Corr. Area 1: 323.1  
 Noise: 0.9

**Peak table for sample 11 : IR50-4-BF-2**

Peak	Size [bp]	Conc. [pg/μl]	Molarity [pmol/l]	Observations
1	35	125.00	5,411.3	Lower Marker
2	50	236.76	7,224.3	
3	430	455.67	1,606.1	
4	485	51.09	159.7	
5	493	63.33	194.5	
6	529	32.24	92.4	
7	564	33.01	88.6	
8	601	39.68	100.0	
9	636	79.33	188.9	
10	691	16.09	35.3	
11	788	18.85	36.3	
12	866	5.74	10.0	
13	959	12.08	19.1	
14	4,102	22.57	8.3	
15	10,380	75.00	10.9	Upper Marker

**Region table for sample 11 : IR50-4-BF-2**

From [bp]	To [bp]	Average Size [bp]	Molarity [pmol/l]	Conc. [pg/μl]	Corr. Area	% of Total	Size distribution in CV [%]	Color
387	467	432	1,586.5	452.81	323.1	38	2.8	Blue

Assay Class: High Sensitivity DNA Assay  
Data Path: C:\...ents and Settings\Bioanalyzer\2012-08-14\2012-08-14\_002.xad

Created: 8/14/2012 9:53:23 AM  
Modified: 8/14/2012 10:40:33 AM

**Gel Image**

