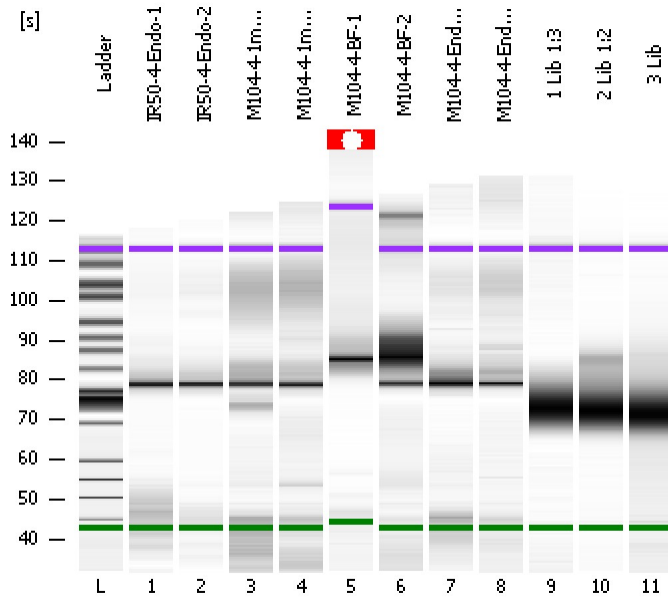


Assay Class: High Sensitivity DNA Assay  
Data Path: C:\...ents and Settings\Bioanalyzer\2012-08-14\2012-08-14\_003.xad

Created: 8/14/2012 10:42:51 AM  
Modified: 8/14/2012 11:33:19 AM

Electrophoresis File Run Summary



Instrument Information:

Instrument Name: DE13701086      Firmware: C.01.069  
Serial#: DE13701086      Type: G2938B

Assay Information:

Assay Origin Path: C:\Program Files\Agilent\2100 bioanalyzer\2100 expert\assays\dsDNA\High Sensitivity DNA.xsy  
Assay Class: High Sensitivity DNA Assay  
Version: 1.03  
Assay Comments: Copyright © 2003-2010 Agilent Technologies

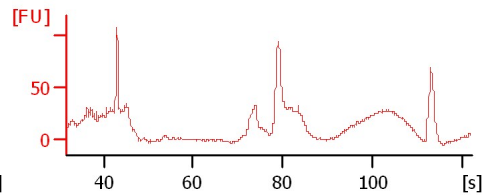
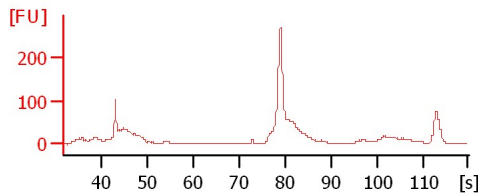
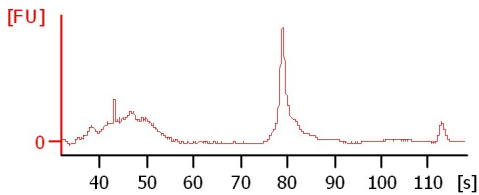
Chip Information:

Chip Lot #:  
Reagent Kit Lot #:  
Chip Comments:

IR50-4-Endo-1

IR50-4-Endo-2

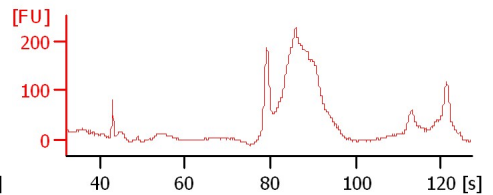
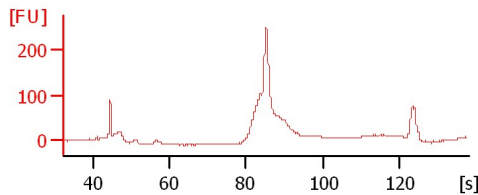
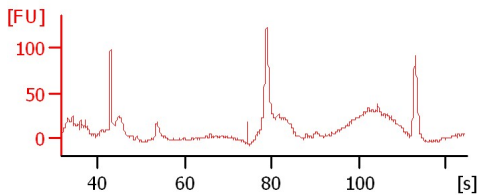
M104-4-1mm-1



M104-4-1mm-2

M104-4-BF-1

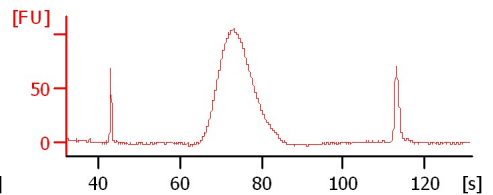
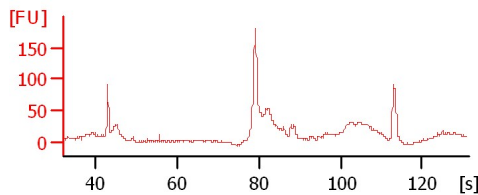
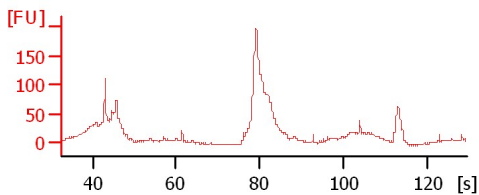
M104-4-BF-2



M104-4-Endo-1

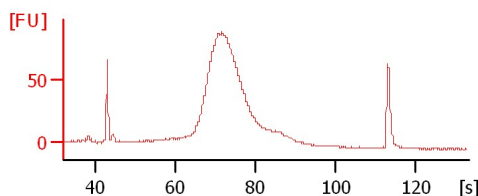
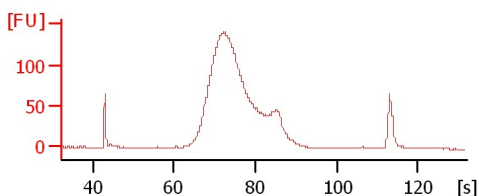
M104-4-Endo-2

1 Lib 1:3



2 Lib 1:2

3 Lib



Assay Class: High Sensitivity DNA Assay  
 Data Path: C:\...ents and Settings\Bioanalyzer\2012-08-14\2012-08-14\_003.xad

Created: 8/14/2012 10:42:51 AM  
 Modified: 8/14/2012 11:33:19 AM

**Electrophoresis File Run Summary (Chip Summary)**

Sample Name	Sample Comment	Rest. Digest	Status	Observation	Result Label	Result Color
IR50-4-Endo-1		<input type="checkbox"/>	✓			
IR50-4-Endo-2		<input type="checkbox"/>	✓			
M104-4-1mm-1		<input type="checkbox"/>	✓			
M104-4-1mm-2		<input type="checkbox"/>	✓			
M104-4-BF-1		<input type="checkbox"/>	✓			
M104-4-BF-2		<input type="checkbox"/>	✓			
M104-4-Endo-1		<input type="checkbox"/>	✓			
M104-4-Endo-2		<input type="checkbox"/>	✓			
1 Lib 1:3		<input type="checkbox"/>	✓			
2 Lib 1:2		<input type="checkbox"/>	✓			
3 Lib		<input type="checkbox"/>	✓			
Ladder		<input type="checkbox"/>	✓			

**Chip Lot #**

**Reagent Kit Lot #**

**Chip Comments :**

Assay Class: High Sensitivity DNA Assay  
Data Path: C:\...ents and Settings\Bioanalyzer\2012-08-14\2012-08-14\_003.xad

Created: 8/14/2012 10:42:51 AM  
Modified: 8/14/2012 11:33:19 AM

**Electrophoresis Assay Details**

**General Analysis Settings**

Number of Available Sample and Ladder Wells (Max.) : 12  
Minimum Visible Range [s] : 32  
Maximum Visible Range [s] : 138  
Start Analysis Time Range [s] : 33  
End Analysis Time Range [s] : 137.5  
Ladder Concentration [pg/μl] : 1950  
Uses Standard Area for Ladder Fragments  
Lower Marker Concentration [pg/μl] : 125  
Upper Marker Concentration [pg/μl] : 75  
Used Upper Marker for Quantitation  
Standard Curve Fit is Point to Point  
Show Data Aligned to Lower and Upper Marker

**Integrator Settings**

Integration Start Time [s] : 33.05  
Integration End Time [s] : 137  
Slope Threshold : 0.8  
Height Threshold [FU] : 5  
Area Threshold : 0.1  
Width Threshold [s] : 0.6  
Baseline Plateau [s] : 0.5

**Filter Settings**

Filter Width [s] : 0.5  
Polynomial Order : 4

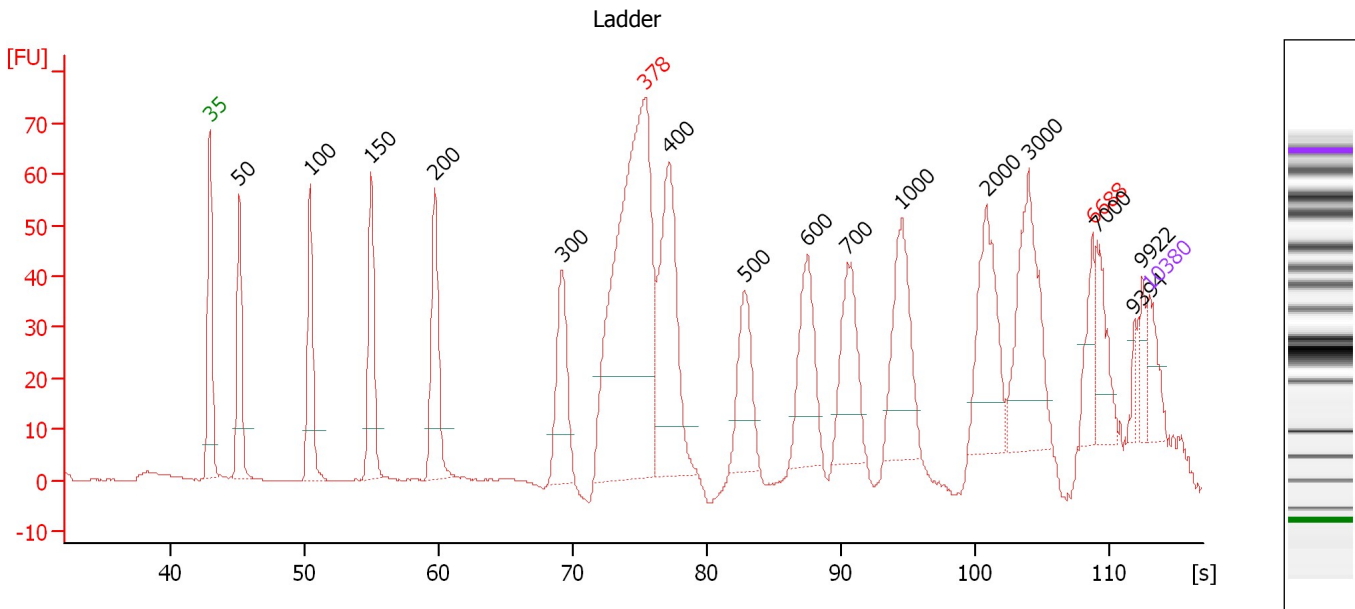
**Ladder**

Ladder Peak	Size	Area
1	35	160
2	50	210
3	100	208
4	150	221
5	200	242
6	300	270
7	400	305
8	500	306
9	600	336
10	700	321
11	1000	366
12	2000	413
13	3000	411
14	7000	400
15	10380	214

Assay Class: High Sensitivity DNA Assay  
 Data Path: C:\...ents and Settings\Bioanalyzer\2012-08-14\2012-08-14\_003.xad

Created: 8/14/2012 10:42:51 AM  
 Modified: 8/14/2012 11:33:19 AM

**Electropherogram Summary**



**Overall Results for Ladder**

Noise: 0.2

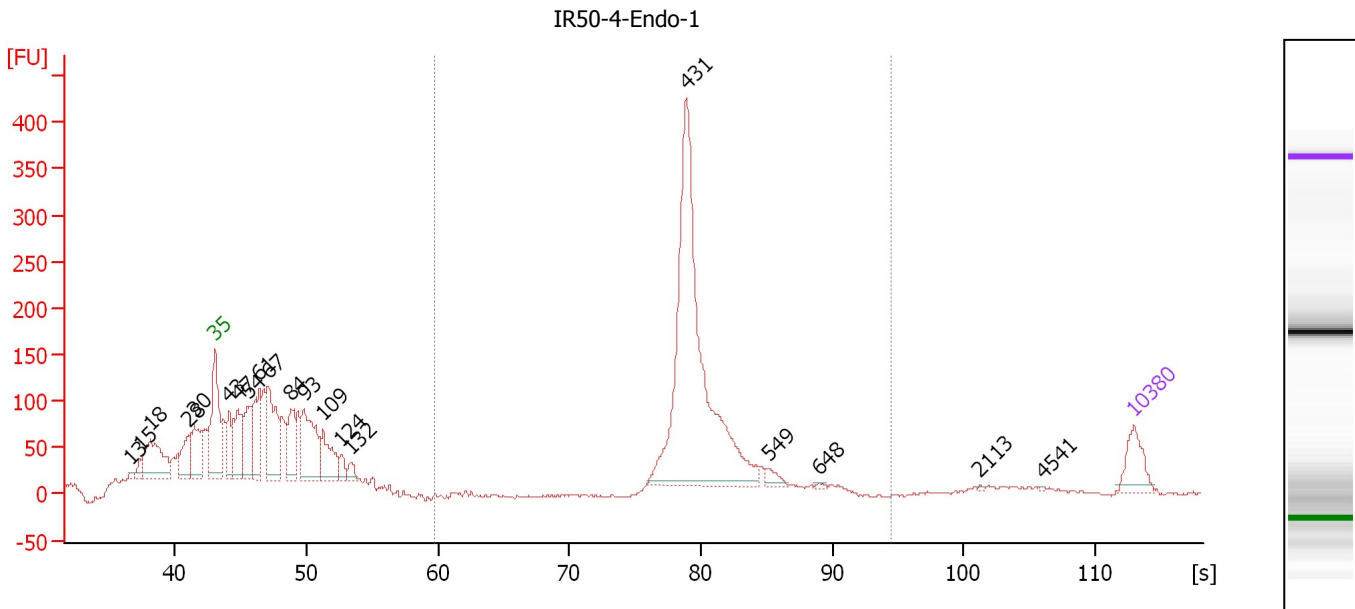
**Peak table for Ladder**

Peak	Size [bp]	Conc. [pg/μl]	Molarity [pmol/l]	Observations
1	35	125.00	5,411.3	Lower Marker
2	50	150.00	4,545.5	Ladder Peak
3	100	150.00	2,272.7	Ladder Peak
4	150	150.00	1,515.2	Ladder Peak
5	200	150.00	1,136.4	Ladder Peak
6	300	150.00	757.6	Ladder Peak
7	378	0.00	0.0	excluded peak
8	400	150.00	568.2	Ladder Peak
9	500	150.00	454.5	Ladder Peak
10	600	150.00	378.8	Ladder Peak
11	700	150.00	324.7	Ladder Peak
12	1,000	150.00	227.3	Ladder Peak
13	2,000	150.00	113.6	Ladder Peak
14	3,000	150.00	75.8	Ladder Peak
15	6,688	0.00	0.0	excluded peak
16	7,000	150.00	32.5	Ladder Peak
17	9,394	0.00	0.0	
18	9,922	0.00	0.0	
19	10,380	75.00	10.9	Upper Marker

Assay Class: High Sensitivity DNA Assay  
 Data Path: C:\...ents and Settings\Bioanalyzer\2012-08-14\2012-08-14\_003.xad

Created: 8/14/2012 10:42:51 AM  
 Modified: 8/14/2012 11:33:19 AM

**Electropherogram Summary Continued ...**



**Overall Results for sample 1 : IR50-4-Endo-1**

Number of peaks found: 20      Corr. Area 1: 1,303.8  
 Noise: 0.8

**Peak table for sample 1 : IR50-4-Endo-1**

Peak	Size [bp]	Conc. [pg/μl]	Molarity [pmol/l]	Observations
1	13	0.00	0.0	
2	15	0.00	0.0	
3	18	0.00	0.0	
4	28	0.00	0.0	
5	30	0.00	0.0	
6	35	125.00	5,411.3	Lower Marker
7	43	146.79	5,230.3	
8	47	218.80	7,014.8	
9	54	194.31	5,458.8	
10	61	248.99	6,155.8	
11	67	346.57	7,781.9	
12	84	191.53	3,466.0	
13	93	320.62	5,201.0	
14	109	183.96	2,567.2	
15	124	42.21	516.0	
16	132	37.83	435.5	
17	431	1,302.78	4,582.9	
18	549	30.05	82.9	
19	648	5.50	12.8	
20	2,113	2.39	1.7	
21	4,541	2.01	0.7	
22	10,380	75.00	10.9	Upper Marker

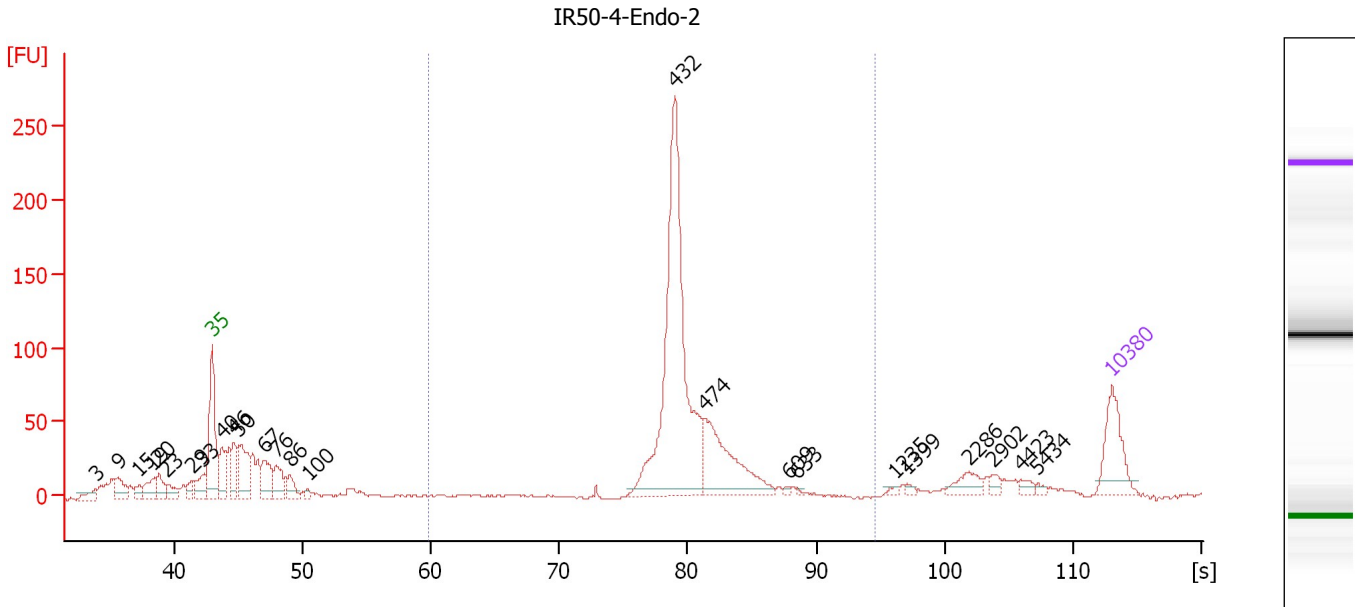
**Region table for sample 1 : IR50-4-Endo-1**

From [bp]	To [bp]	Average Size [bp]	Molarity [pmol/l]	Conc. [pg/μl]	Corr. Area	% of Total	Size distribution in CV [%]	Color
200	1,000	453	4,795.3	1,418.69	1,303.8	35	10.4	Blue

Assay Class: High Sensitivity DNA Assay  
 Data Path: C:\...ents and Settings\Bioanalyzer\2012-08-14\2012-08-14\_003.xad

Created: 8/14/2012 10:42:51 AM  
 Modified: 8/14/2012 11:33:19 AM

**Electropherogram Summary Continued ...**



**Overall Results for sample 2 : IR50-4-Endo-2**

Number of peaks found: 25                      Corr. Area 1: 830.9  
 Noise: 0.6


**Peak table for sample 2 : IR50-4-Endo-2**

Peak	Size [bp]	Conc. [pg/μl]	Molarity [pmol/l]	Observations
1	3	0.00	0.0	
2	9	0.00	0.0	
3	15	0.00	0.0	
4	19	0.00	0.0	
5	20	0.00	0.0	
6	23	0.00	0.0	
7	29	0.00	0.0	
8	33	0.00	0.0	
9	35	125.00	5,411.3	Lower Marker
10	40	82.29	3,107.7	
11	46	78.60	2,567.4	
12	50	125.95	3,854.2	
13	67	84.28	1,902.8	
14	76	64.23	1,277.1	
15	86	41.92	734.4	
16	100	9.31	141.7	
17	432	657.06	2,305.5	
18	474	201.01	643.1	
19	609	4.43	11.0	
20	633	2.47	5.9	
21	1,235	4.61	5.7	
22	1,399	5.38	5.8	
23	2,286	26.54	17.6	
24	2,902	9.64	5.0	
25	4,423	9.40	3.2	
26	5,434	4.45	1.2	


Assay Class: High Sensitivity DNA Assay  
Data Path: C:\...ents and Settings\Bioanalyzer\2012-08-14\2012-08-14\_003.xad

Created: 8/14/2012 10:42:51 AM  
Modified: 8/14/2012 11:33:19 AM

**Electropherogram Summary Continued ...****... Peak table for sample 2 : IR50-4-Endo-2**

Peak	Size [bp]	Conc. [pg/ $\mu$ l]	Molarity [pmol/l]	Observations
27	 10,380	75.00	10.9	Upper Marker

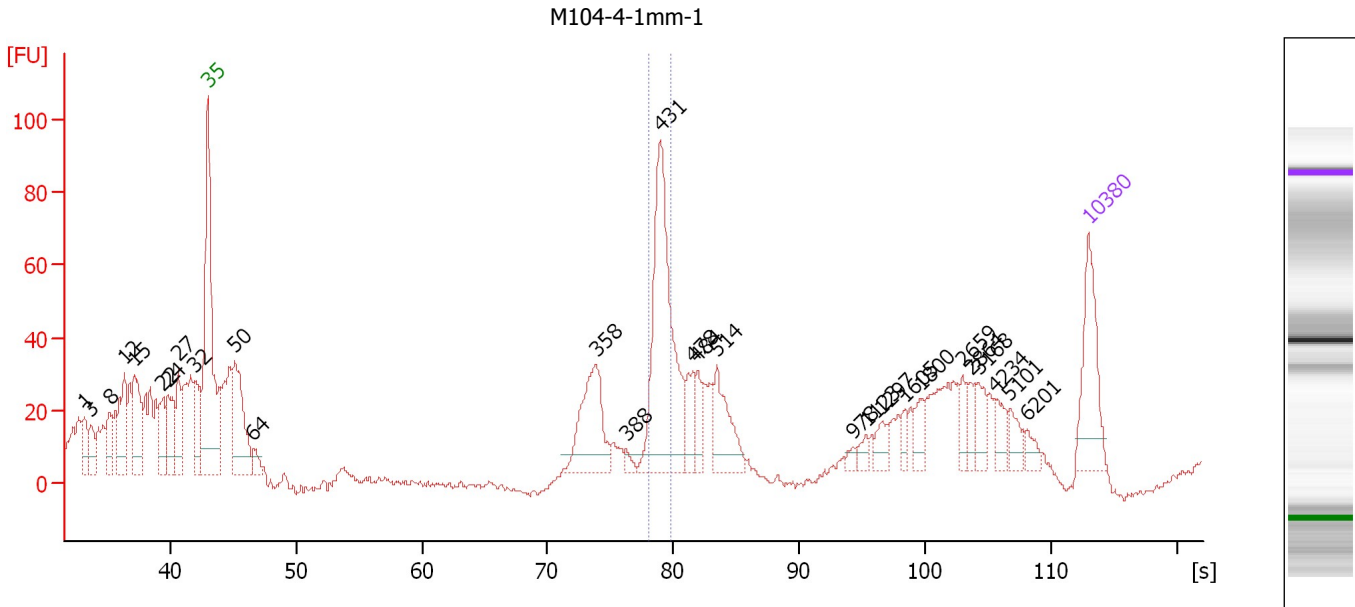
**Region table for sample 2 : IR50-4-Endo-2**

From [bp]	To [bp]	Average Size [bp]	Molarity [pmol/l]	Conc. [pg/ $\mu$ l]	Corr. Area	% of Total	Size distribution in CV [%]	Color
200	1,000	451	3,151.6	914.95	830.9	50	12.2	

Assay Class: High Sensitivity DNA Assay  
 Data Path: C:\...ents and Settings\Bioanalyzer\2012-08-14\2012-08-14\_003.xad

Created: 8/14/2012 10:42:51 AM  
 Modified: 8/14/2012 11:33:19 AM

**Electropherogram Summary Continued ...**



**Overall Results for sample 3 : M104-4-1mm-1**

Number of peaks found: 28                      Corr. Area 1: 133.1  
 Noise: 0.8

**Peak table for sample 3 : M104-4-1mm-1**

Peak	Size [bp]	Conc. [pg/μl]	Molarity [pmol/l]	Observations
1	1	0.00	0.0	
2	3	0.00	0.0	
3	8	0.00	0.0	
4	12	0.00	0.0	
5	15	0.00	0.0	
6	22	0.00	0.0	
7	24	0.00	0.0	
8	27	0.00	0.0	
9	32	0.00	0.0	
10	35	125.00	5,411.3	Lower Marker
11	50	162.07	4,956.6	
12	64	20.98	500.5	
13	358	127.98	541.9	
14	388	8.56	33.4	
15	431	299.64	1,054.1	
16	478	38.49	122.0	
17	484	27.36	85.6	
18	514	71.42	210.7	
19	978	7.15	11.1	
20	1,123	10.80	14.6	
21	1,297	18.64	21.8	
22	1,605	10.85	10.2	
23	1,800	18.59	15.6	
24	2,659	16.18	9.2	
25	2,864	15.68	8.3	
26	3,168	22.33	10.7	



Assay Class: High Sensitivity DNA Assay  
 Data Path: C:\...ents and Settings\Bioanalyzer\2012-08-14\2012-08-14\_003.xad


Created: 8/14/2012 10:42:51 AM  
 Modified: 8/14/2012 11:33:19 AM

### Electropherogram Summary Continued ...

#### ... Peak table for sample 3 : M104-4-1mm-1

Peak	Size [bp]	Conc. [pg/μl]	Molarity [pmol/l]	Observations
27	4,234	19.98	7.1	
28	5,101	17.13	5.1	
29	6,201	11.62	2.8	
30	10,380	75.00	10.9	Upper Marker

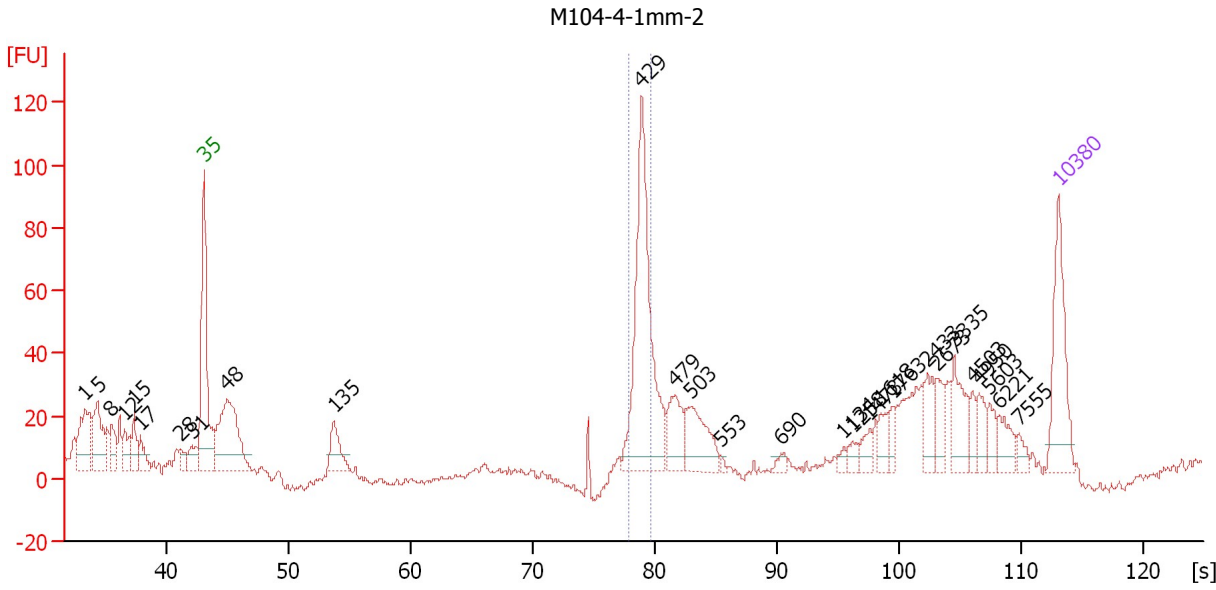
#### Region table for sample 3 : M104-4-1mm-1

From [bp]	To [bp]	Average Size [bp]	Molarity [pmol/l]	Conc. [pg/μl]	Corr. Area	% of Total	Size distribution in CV [%]	Color
414	446	431	677.4	192.80	133.1	17	1.7	

Assay Class: High Sensitivity DNA Assay  
 Data Path: C:\...ents and Settings\Bioanalyzer\2012-08-14\2012-08-14\_003.xad

Created: 8/14/2012 10:42:51 AM  
 Modified: 8/14/2012 11:33:19 AM

**Electropherogram Summary Continued ...**



**Overall Results for sample 4 : M104-4-1mm-2**

Number of peaks found: 28                      Corr. Area 1: 149.6  
 Noise: 1.3

**Peak table for sample 4 : M104-4-1mm-2**


Peak	Size [bp]	Conc. [pg/μl]	Molarity [pmol/l]	Observations
1	1	0.00	0.0	
2	5	0.00	0.0	
3	8	0.00	0.0	
4	12	0.00	0.0	
5	15	0.00	0.0	
6	17	0.00	0.0	
7	28	0.00	0.0	
8	31	0.00	0.0	
9	35	125.00	5,411.3	Lower Marker
10	48	184.97	5,851.9	
11	135	49.06	550.7	
12	429	275.14	971.2	
13	479	51.43	162.8	
14	503	69.16	208.5	
15	553	2.97	8.1	
16	690	7.30	16.0	
17	1,134	5.09	6.8	
18	1,258	9.43	11.4	
19	1,473	13.39	13.8	
20	1,618	15.54	14.6	
21	1,763	11.58	10.0	
22	2,433	25.65	16.0	
23	2,673	21.58	12.2	
24	3,335	38.94	17.7	
25	4,503	12.82	4.3	
26	4,950	18.69	5.7	

Assay Class: High Sensitivity DNA Assay  
 Data Path: C:\...ents and Settings\Bioanalyzer\2012-08-14\2012-08-14\_003.xad


Created: 8/14/2012 10:42:51 AM  
 Modified: 8/14/2012 11:33:19 AM

### Electropherogram Summary Continued ...

#### ... Peak table for sample 4 : M104-4-1mm-2

Peak	Size [bp]	Conc. [pg/μl]	Molarity [pmol/l]	Observations
27	5,603	15.19	4.1	
28	6,221	21.19	5.2	
29	7,555	8.89	1.8	
30	 10,380	75.00	10.9	Upper Marker

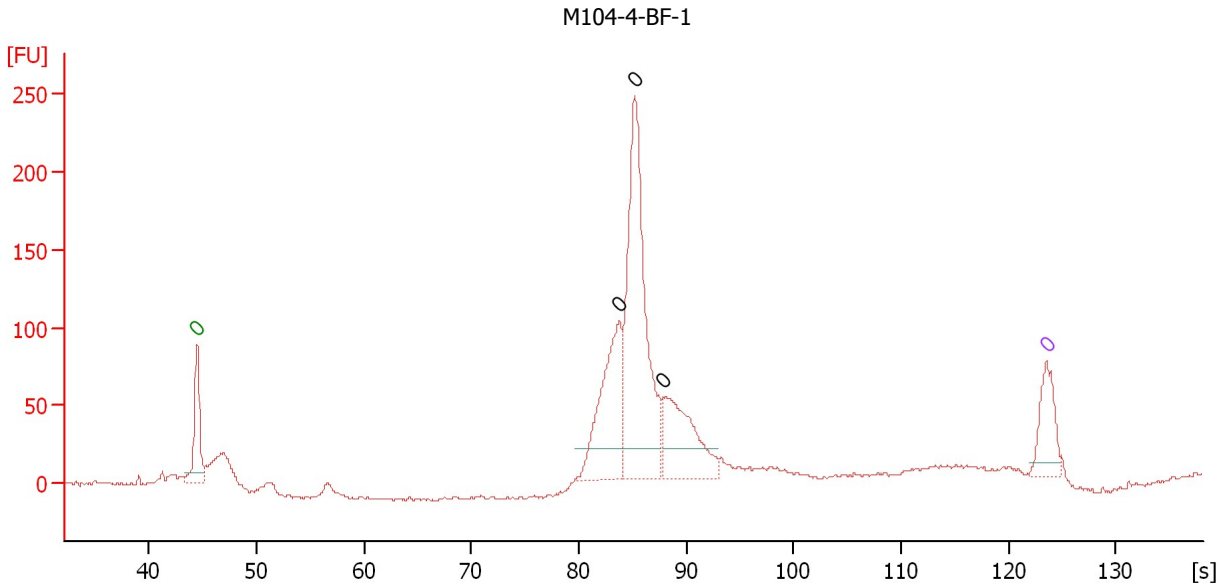
#### Region table for sample 4 : M104-4-1mm-2

From [bp]	To [bp]	Average Size [bp]	Molarity [pmol/l]	Conc. [pg/μl]	Corr. Area	% of Total	Size distribution in CV [%]	Color
412	443	429	666.2	188.76	149.6	25	1.7	

Assay Class: High Sensitivity DNA Assay  
 Data Path: C:\...ents and Settings\Bioanalyzer\2012-08-14\2012-08-14\_003.xad

Created: 8/14/2012 10:42:51 AM  
 Modified: 8/14/2012 11:33:19 AM

**Electropherogram Summary Continued ...**



**Setpoint Deviations for sample 5 : M104-4-BF-1**

End Analysis Time Range [s] : 106.05      Height Threshold [FU] : 20

**Overall Results for sample 5 : M104-4-BF-1**

Number of peaks found: 3      Noise: 0.9

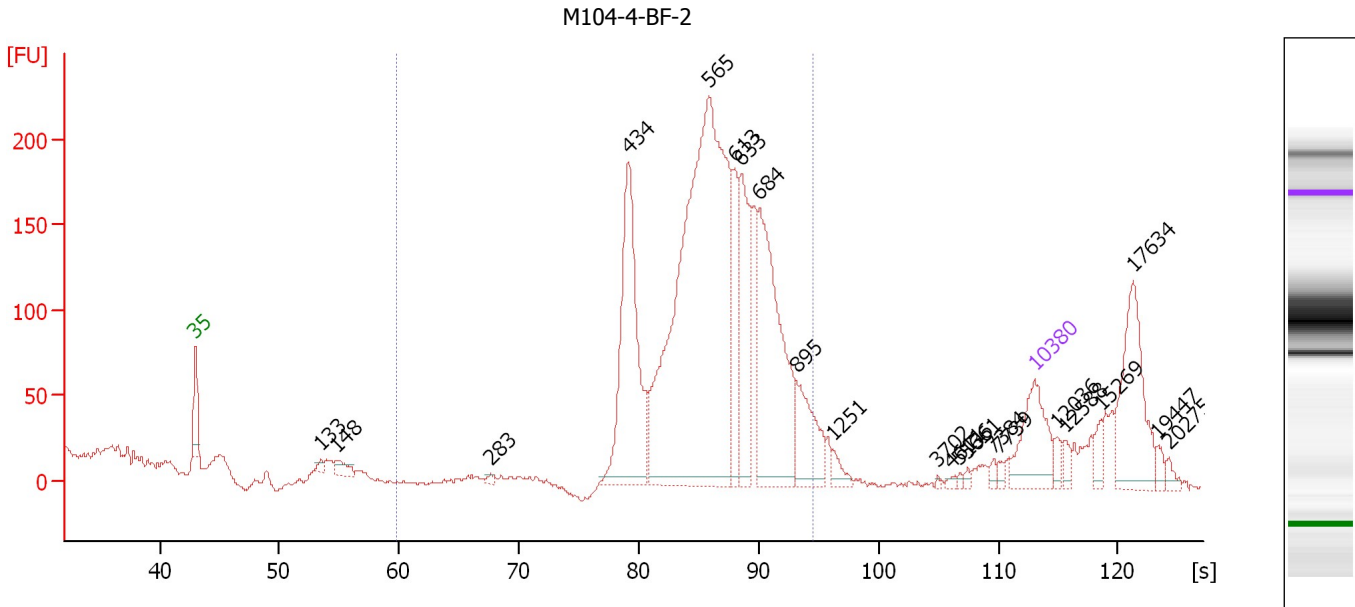
**Peak table for sample 5 : M104-4-BF-1**

Peak	Size [bp]	Conc. [pg/μl]	Molarity [pmol/l]	Observations
1	0	125.00	0.0	Lower Marker
2	0	595.00	0.0	
3	0	1,266.40	0.0	
4	0	468.34	0.0	
5	0	75.00	0.0	Upper Marker

Assay Class: High Sensitivity DNA Assay  
 Data Path: C:\...ents and Settings\Bioanalyzer\2012-08-14\2012-08-14\_003.xad

Created: 8/14/2012 10:42:51 AM  
 Modified: 8/14/2012 11:33:19 AM

**Electropherogram Summary Continued ...**



**Overall Results for sample 6 : M104-4-BF-2**

Number of peaks found: 22      Corr. Area 1: 2,430.8  
 Noise: 1.1

**Peak table for sample 6 : M104-4-BF-2**

Peak	Size [bp]	Conc. [pg/μl]	Molarity [pmol/l]	Observations
1	35	125.00	5,411.3	Lower Marker
2	133	7.94	90.3	
3	148	22.03	225.5	
4	283	5.08	27.2	
5	434	309.00	1,078.9	
6	565	921.95	2,472.9	
7	613	89.95	222.2	
8	633	143.98	344.7	
9	684	297.47	659.3	
10	895	88.84	150.4	
11	1,251	14.42	17.5	
12	3,702	1.50	0.6	
13	4,611	3.27	1.1	
14	5,136	2.60	0.8	
15	5,661	3.32	0.9	
16	7,384	5.96	1.2	
17	7,739	4.99	1.0	
18	10,380	75.00	10.9	Upper Marker
19	12,036	0.00	0.0	
20	12,588	0.00	0.0	
21	15,269	0.00	0.0	
22	17,634	0.00	0.0	
23	19,447	0.00	0.0	
24	20,275	0.00	0.0	

Assay Class: High Sensitivity DNA Assay  
Data Path: C:\...ents and Settings\Bioanalyzer\2012-08-14\2012-08-14\_003.xad

Created: 8/14/2012 10:42:51 AM  
Modified: 8/14/2012 11:33:19 AM

**Electropherogram Summary Continued ...**

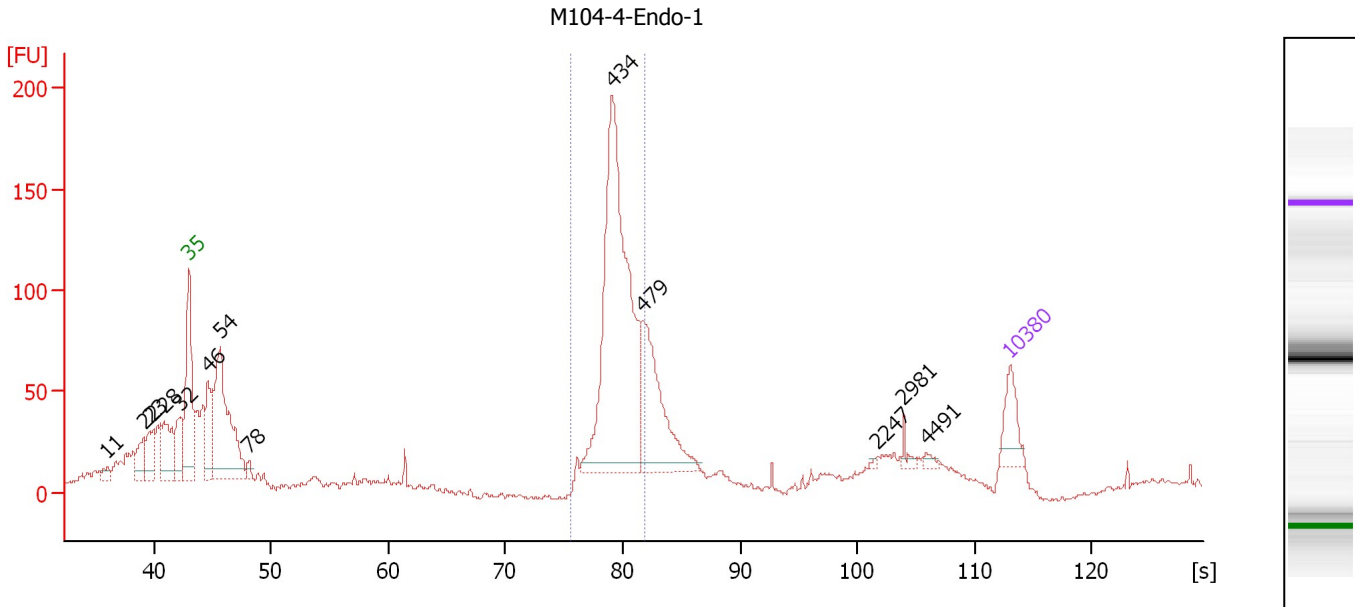
... Region table for sample 6 : M104-4-BF-2

From [bp]	To [bp]	Average Size [bp]	Molarity [pmol/l]	Conc. [pg/μl]	Corr. Area	% of Total	Size distribution in CV [%]	Color
200	1,000	596	4,785.1	1,794.89	2,430.8	83	20.1	■

Assay Class: High Sensitivity DNA Assay  
 Data Path: C:\...ents and Settings\Bioanalyzer\2012-08-14\2012-08-14\_003.xad

Created: 8/14/2012 10:42:51 AM  
 Modified: 8/14/2012 11:33:19 AM

**Electropherogram Summary Continued ...**



**Overall Results for sample 7 : M104-4-Endo-1**

Number of peaks found: 13      Corr. Area 1: 640.1  
 Noise: 1.5

**Peak table for sample 7 : M104-4-Endo-1**

Peak	Size [bp]	Conc. [pg/μl]	Molarity [pmol/l]	Observations
1	11	0.00	0.0	
2	22	0.00	0.0	
3	23	0.00	0.0	
4	28	0.00	0.0	
5	32	0.00	0.0	
6	35	125.00	5,411.3	Lower Marker
7	46	188.44	6,216.8	
8	54	605.56	16,892.8	
9	78	21.91	427.1	
10	434	1,086.84	3,798.2	
11	479	371.96	1,175.7	
12	2,247	4.78	3.2	
13	2,981	16.17	8.2	
14	4,491	10.19	3.4	
15	10,380	75.00	10.9	Upper Marker

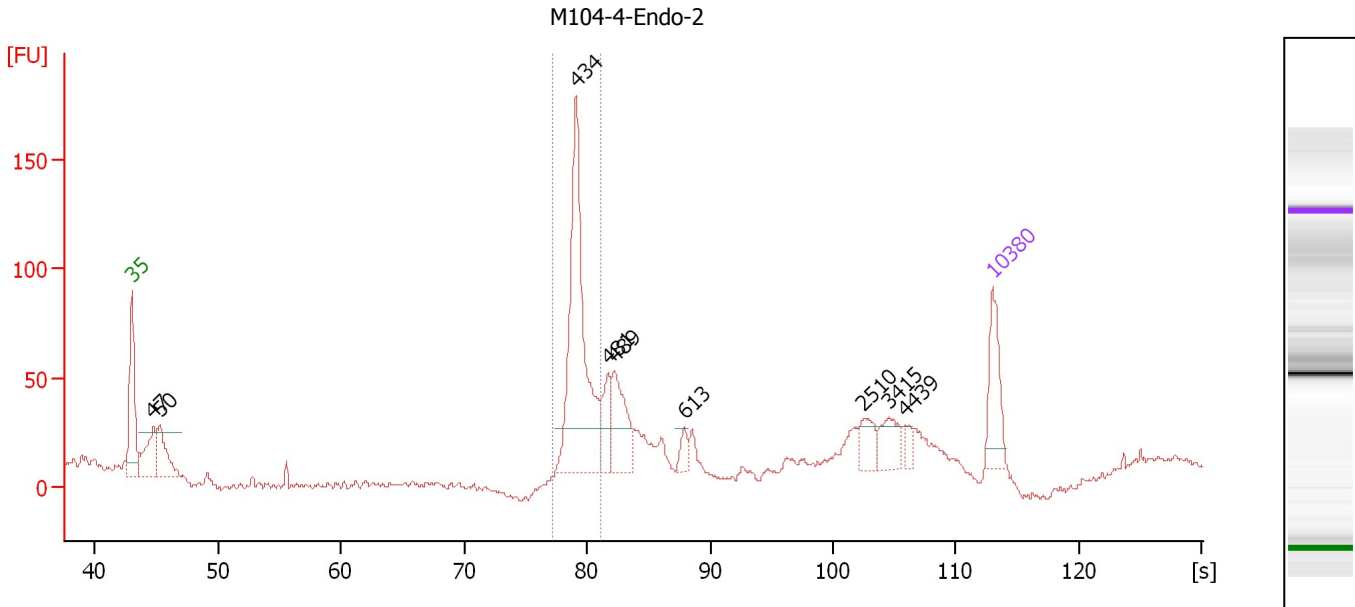
**Region table for sample 7 : M104-4-Endo-1**

From [bp]	To [bp]	Average Size [bp]	Molarity [pmol/l]	Conc. [pg/μl]	Corr. Area	% of Total	Size distribution in CV [%]	Color
379	484	442	4,197.5	1,223.98	640.1	36	4.8	Blue

Assay Class: High Sensitivity DNA Assay  
 Data Path: C:\...ents and Settings\Bioanalyzer\2012-08-14\2012-08-14\_003.xad

Created: 8/14/2012 10:42:51 AM  
 Modified: 8/14/2012 11:33:19 AM

**Electropherogram Summary Continued ...**



**Setpoint Deviations for sample 8 : M104-4-Endo-2**

Height Threshold [FU] : 20

**Overall Results for sample 8 : M104-4-Endo-2**

Number of peaks found: 9                      Corr. Area 1: 286.9  
 Noise: 1.4

**Peak table for sample 8 : M104-4-Endo-2**

Peak	Size [bp]	Conc. [pg/µl]	Molarity [pmol/l]	Observations
1	35	125.00	5,411.3	Lower Marker
2	47	117.48	3,802.4	
3	50	101.87	3,059.2	
4	434	420.73	1,468.8	
5	481	68.60	216.2	
6	489	111.61	345.7	
7	613	20.92	51.7	
8	2,510	37.07	22.4	
9	3,415	43.43	19.3	
10	4,439	13.84	4.7	
11	10,380	75.00	10.9	Upper Marker

**Region table for sample 8 : M104-4-Endo-2**

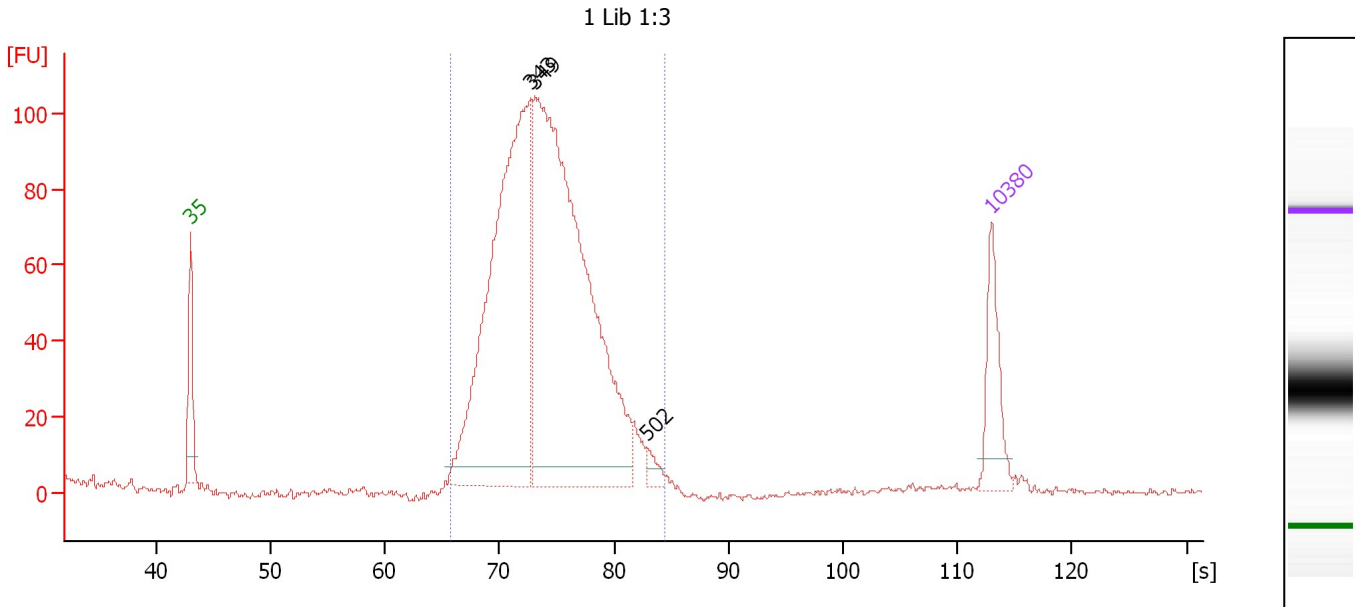
From [bp]	To [bp]	Average Size [bp]	Molarity [pmol/l]	Conc. [pg/µl]	Corr. Area	% of Total	Size distribution in CV [%]	Color
399	470	438	1,455.9	420.61	286.9	33	2.9	Blue



Assay Class: High Sensitivity DNA Assay  
 Data Path: C:\...ents and Settings\Bioanalyzer\2012-08-14\2012-08-14\_003.xad

Created: 8/14/2012 10:42:51 AM  
 Modified: 8/14/2012 11:33:19 AM

**Electropherogram Summary Continued ...**



**Overall Results for sample 9 : 1 Lib 1:3**

Number of peaks found: 3                      Corr. Area 1: 1,354.9  
 Noise: 0.7

**Peak table for sample 9 : 1 Lib 1:3**

Peak	Size [bp]	Conc. [pg/μl]	Molarity [pmol/l]	Observations
1	35	125.00	5,411.3	Lower Marker
2	343	816.66	3,605.0	
3	349	1,067.89	4,642.3	
4	502	17.75	53.6	
5	10,380	75.00	10.9	Upper Marker

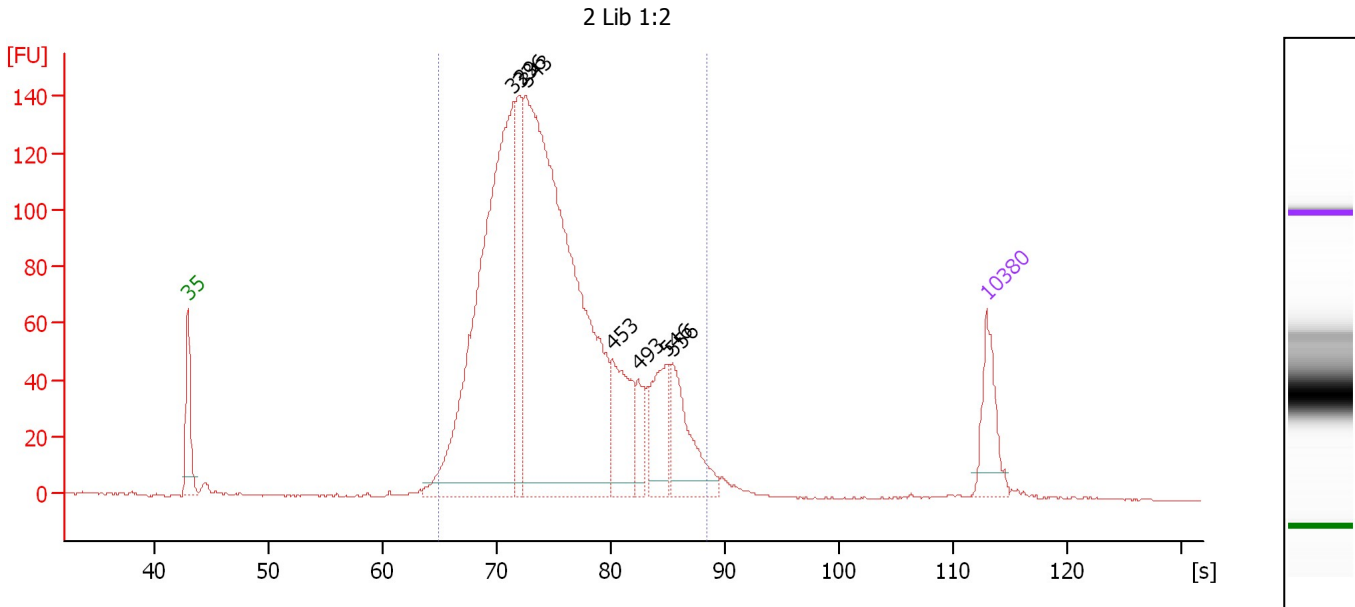
**Region table for sample 9 : 1 Lib 1:3**

From [bp]	To [bp]	Average Size [bp]	Molarity [pmol/l]	Conc. [pg/μl]	Corr. Area	% of Total	Size distribution in CV [%]	Color
262	534	361	8,305.7	1,934.92	1,354.9	99	14.0	Blue

Assay Class: High Sensitivity DNA Assay  
 Data Path: C:\...ents and Settings\Bioanalyzer\2012-08-14\2012-08-14\_003.xad

Created: 8/14/2012 10:42:51 AM  
 Modified: 8/14/2012 11:33:19 AM

**Electropherogram Summary Continued ...**



**Overall Results for sample 10 : 2 Lib 1:2**

Number of peaks found: 7      Corr. Area 1: 2,220.5  
 Noise: 0.3

**Peak table for sample 10 : 2 Lib 1:2**

Peak	Size [bp]	Conc. [pg/μl]	Molarity [pmol/l]	Observations
1	35	125.00	5,411.3	Lower Marker
2	329	1,041.71	4,804.3	
3	336	192.67	869.8	
4	343	1,441.02	6,370.8	
5	453	166.18	555.8	
6	493	55.73	171.2	
7	546	123.10	341.7	
8	556	147.65	402.5	
9	10,380	75.00	10.9	Upper Marker

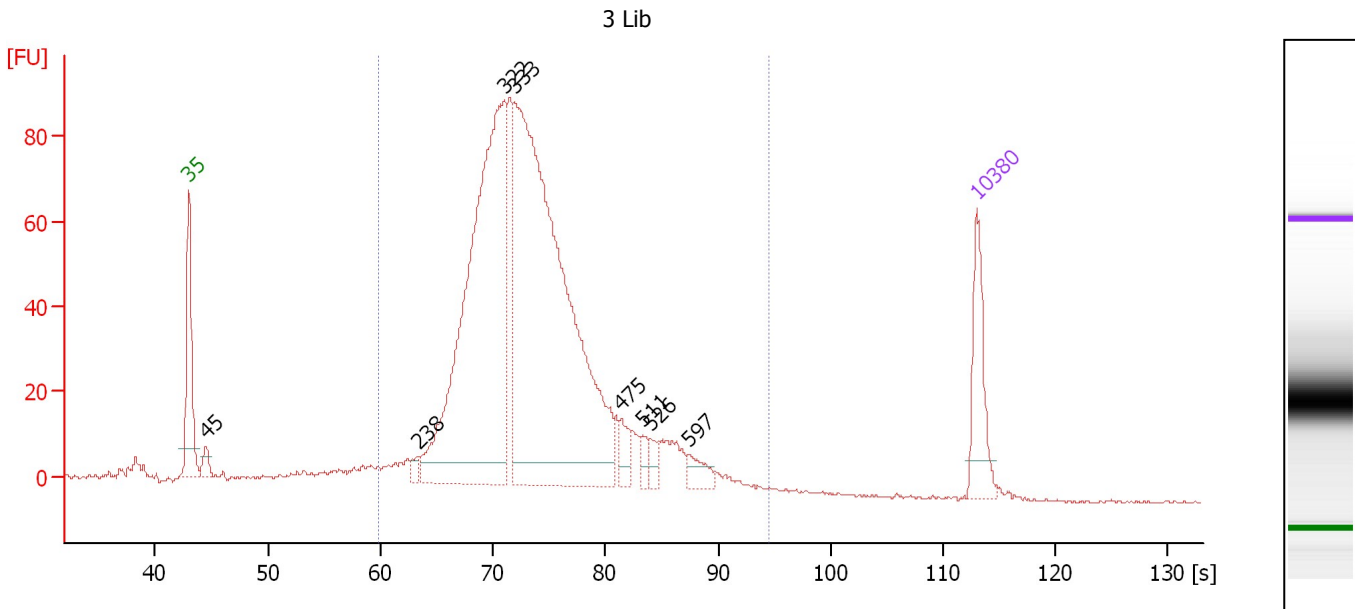
**Region table for sample 10 : 2 Lib 1:2**

From [bp]	To [bp]	Average Size [bp]	Molarity [pmol/l]	Conc. [pg/μl]	Corr. Area	% of Total	Size distribution in CV [%]	Color
256	632	382	13,245.8	3,157.57	2,220.5	97	21.3	Blue

Assay Class: High Sensitivity DNA Assay  
 Data Path: C:\...ents and Settings\Bioanalyzer\2012-08-14\2012-08-14\_003.xad

Created: 8/14/2012 10:42:51 AM  
 Modified: 8/14/2012 11:33:19 AM

**Electropherogram Summary Continued ...**



**Overall Results for sample 11 : 3 Lib**

Number of peaks found: 8  
 Noise: 0.3  
 Corr. Area 1: 1,382.1

**Peak table for sample 11 : 3 Lib**

Peak	Size [bp]	Conc. [pg/μl]	Molarity [pmol/l]	Observations
1	35	125.00	5,411.3	Lower Marker
2	45	26.08	870.4	
3	238	13.53	86.1	
4	322	879.73	4,139.1	
5	333	1,132.73	5,156.8	
6	475	31.67	101.1	
7	511	16.44	48.8	
8	526	15.99	46.1	
9	597	24.72	62.7	
10	10,380	75.00	10.9	Upper Marker

**Region table for sample 11 : 3 Lib**

From [bp]	To [bp]	Average Size [bp]	Molarity [pmol/l]	Conc. [pg/μl]	Corr. Area	% of Total	Size distribution in CV [%]	Color
200	1,000	362	10,536.1	2,365.34	1,382.1	95	24.3	Blue

Assay Class: High Sensitivity DNA Assay  
Data Path: C:\...ents and Settings\Bioanalyzer\2012-08-14\2012-08-14\_003.xad

Created: 8/14/2012 10:42:51 AM  
Modified: 8/14/2012 11:33:19 AM

**Gel Image**

