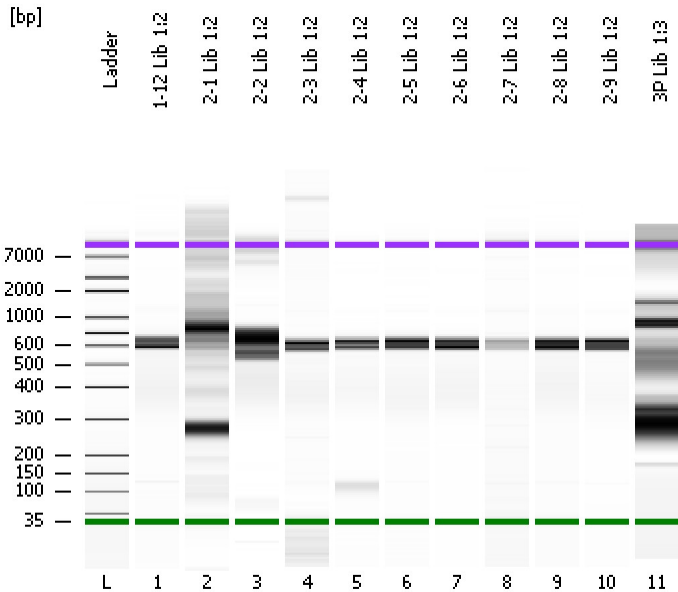


Assay Class: High Sensitivity DNA Assay
Data Path: C:\...ents and Settings\Bioanalyzer\2012-08-15\2012-08-15_002.xad

Created: 8/15/2012 2:13:11 PM
Modified: 8/15/2012 5:05:59 PM

Electrophoresis File Run Summary



Instrument Information:

Instrument Name: DE13701086 Firmware: C.01.069
Serial#: DE13701086 Type: G2938B

Assay Information:

Assay Origin Path: C:\Program Files\Agilent\2100 bioanalyzer\2100 expert\assays\dsDNA\High Sensitivity DNA.xsy
Assay Class: High Sensitivity DNA Assay
Version: 1.03
Assay Comments: Copyright © 2003-2010 Agilent Technologies

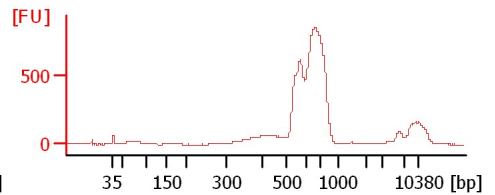
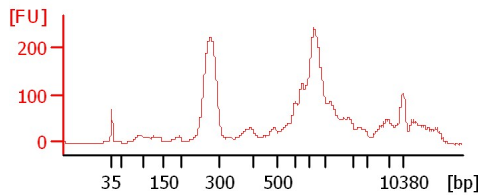
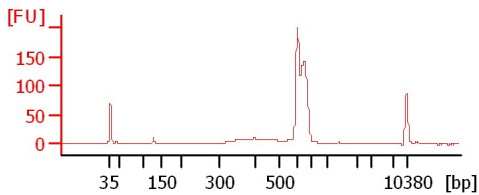
Chip Information:

Chip Lot #:
Reagent Kit Lot #:
Chip Comments:

1-12 Lib 1:2

2-1 Lib 1:2

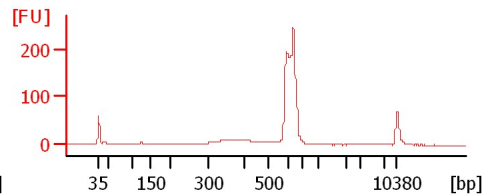
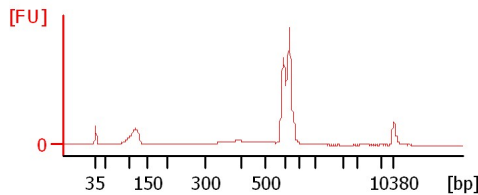
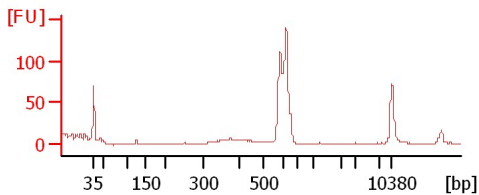
2-2 Lib 1:2



2-3 Lib 1:2

2-4 Lib 1:2

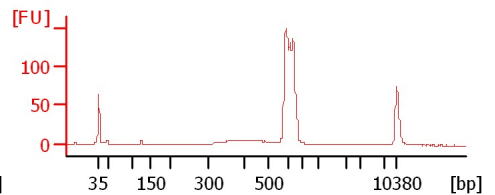
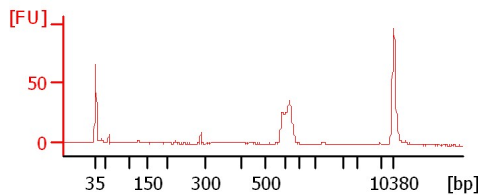
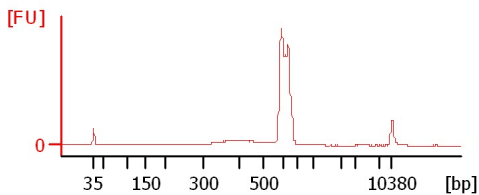
2-5 Lib 1:2



2-6 Lib 1:2

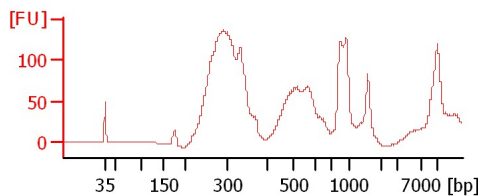
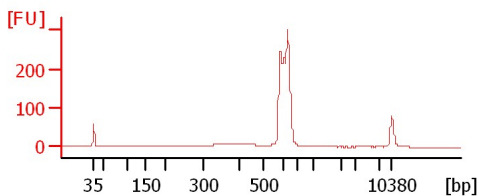
2-7 Lib 1:2

2-8 Lib 1:2



2-9 Lib 1:2

3P Lib 1:3



Assay Class: High Sensitivity DNA Assay
Data Path: C:\...ents and Settings\Bioanalyzer\2012-08-15\2012-08-15_002.xad

Created: 8/15/2012 2:13:11 PM
Modified: 8/15/2012 5:05:59 PM

Electrophoresis File Run Summary (Chip Summary)

Sample Name	Sample Comment	Rest. Digest	Status	Observation	Result Label	Result Color
1-12 Lib 1:2		<input type="checkbox"/>	✓			
2-1 Lib 1:2		<input type="checkbox"/>	✓			
2-2 Lib 1:2		<input type="checkbox"/>	✓			
2-3 Lib 1:2		<input type="checkbox"/>	✓			
2-4 Lib 1:2		<input type="checkbox"/>	✓			
2-5 Lib 1:2		<input type="checkbox"/>	✓			
2-6 Lib 1:2		<input type="checkbox"/>	✓			
2-7 Lib 1:2		<input type="checkbox"/>	✓			
2-8 Lib 1:2		<input type="checkbox"/>	✓			
2-9 Lib 1:2		<input type="checkbox"/>	✓			
3P Lib 1:3		<input type="checkbox"/>	✓			
Ladder		<input type="checkbox"/>	✓			

Chip Lot #

Reagent Kit Lot #

Chip Comments :

Assay Class: High Sensitivity DNA Assay
Data Path: C:\...ents and Settings\Bioanalyzer\2012-08-15\2012-08-15_002.xad

Created: 8/15/2012 2:13:11 PM
Modified: 8/15/2012 5:05:59 PM

Electrophoresis Assay Details

General Analysis Settings

Number of Available Sample and Ladder Wells (Max.) : 12
Minimum Visible Range [s] : 32
Maximum Visible Range [s] : 138
Start Analysis Time Range [s] : 33
End Analysis Time Range [s] : 137.5
Ladder Concentration [pg/μl] : 1950
Uses Standard Area for Ladder Fragments
Lower Marker Concentration [pg/μl] : 125
Upper Marker Concentration [pg/μl] : 75
Used Upper Marker for Quantitation
Standard Curve Fit is Point to Point
Show Data Aligned to Lower and Upper Marker

Integrator Settings

Integration Start Time [s] : 33.05
Integration End Time [s] : 137
Slope Threshold : 0.8
Height Threshold [FU] : 5
Area Threshold : 0.1
Width Threshold [s] : 0.6
Baseline Plateau [s] : 0.5

Filter Settings

Filter Width [s] : 0.5
Polynomial Order : 4

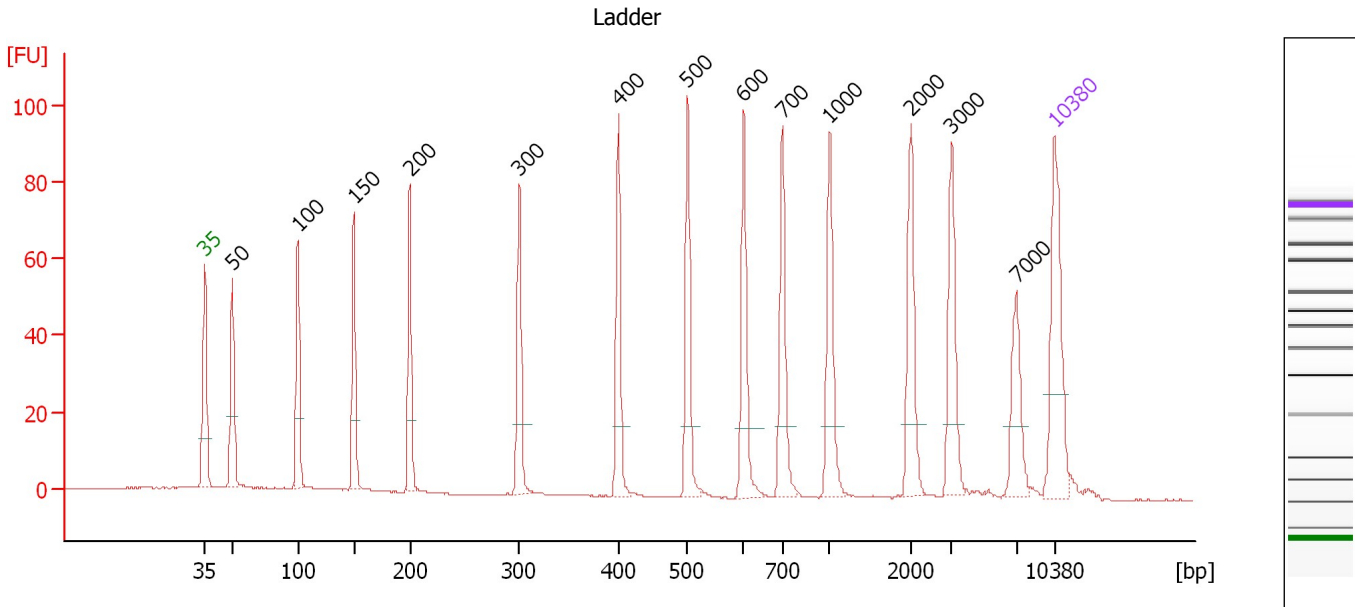
Ladder

Ladder Peak	Size	Area
1	35	160
2	50	210
3	100	208
4	150	221
5	200	242
6	300	270
7	400	305
8	500	306
9	600	336
10	700	321
11	1000	366
12	2000	413
13	3000	411
14	7000	400
15	10380	214

Assay Class: High Sensitivity DNA Assay
 Data Path: C:\...ents and Settings\Bioanalyzer\2012-08-15\2012-08-15_002.xad

Created: 8/15/2012 2:13:11 PM
 Modified: 8/15/2012 5:05:59 PM

Electropherogram Summary



Overall Results for Ladder

Noise: 0.1

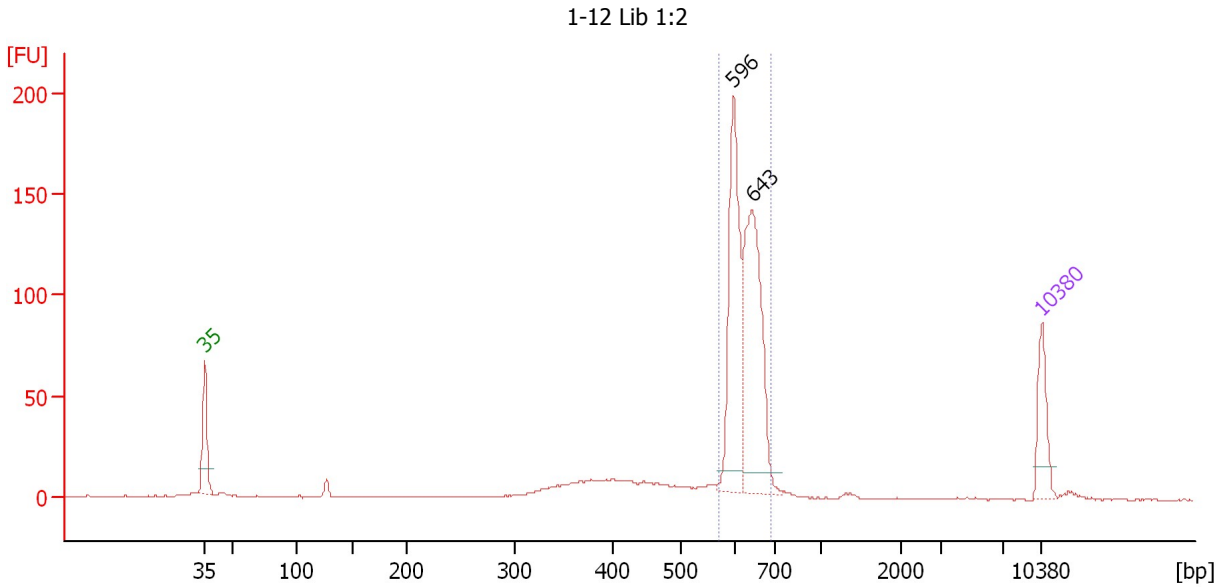
Peak table for Ladder

Peak	Size [bp]	Conc. [pg/μl]	Molarity [pmol/l]	Observations
1	35	125.00	5,411.3	Lower Marker
2	50	150.00	4,545.5	Ladder Peak
3	100	150.00	2,272.7	Ladder Peak
4	150	150.00	1,515.2	Ladder Peak
5	200	150.00	1,136.4	Ladder Peak
6	300	150.00	757.6	Ladder Peak
7	400	150.00	568.2	Ladder Peak
8	500	150.00	454.5	Ladder Peak
9	600	150.00	378.8	Ladder Peak
10	700	150.00	324.7	Ladder Peak
11	1,000	150.00	227.3	Ladder Peak
12	2,000	150.00	113.6	Ladder Peak
13	3,000	150.00	75.8	Ladder Peak
14	7,000	150.00	32.5	Ladder Peak
15	10,380	75.00	10.9	Upper Marker

Assay Class: High Sensitivity DNA Assay
 Data Path: C:\...ents and Settings\Bioanalyzer\2012-08-15\2012-08-15_002.xad

Created: 8/15/2012 2:13:11 PM
 Modified: 8/15/2012 5:05:59 PM

Electropherogram Summary Continued ...



Setpoint Deviations for sample 1 : 1-12 Lib 1:2

Height Threshold [FU] : 10

Overall Results for sample 1 : 1-12 Lib 1:2

Number of peaks found: 2 Corr. Area 1: 536.3
 Noise: 0.1

Peak table for sample 1 : 1-12 Lib 1:2

Peak	Size [bp]	Conc. [pg/µl]	Molarity [pmol/l]	Observations
1	35	125.00	5,411.3	Lower Marker
2	596	350.42	890.3	
3	643	413.51	973.8	
4	10,380	75.00	10.9	Upper Marker

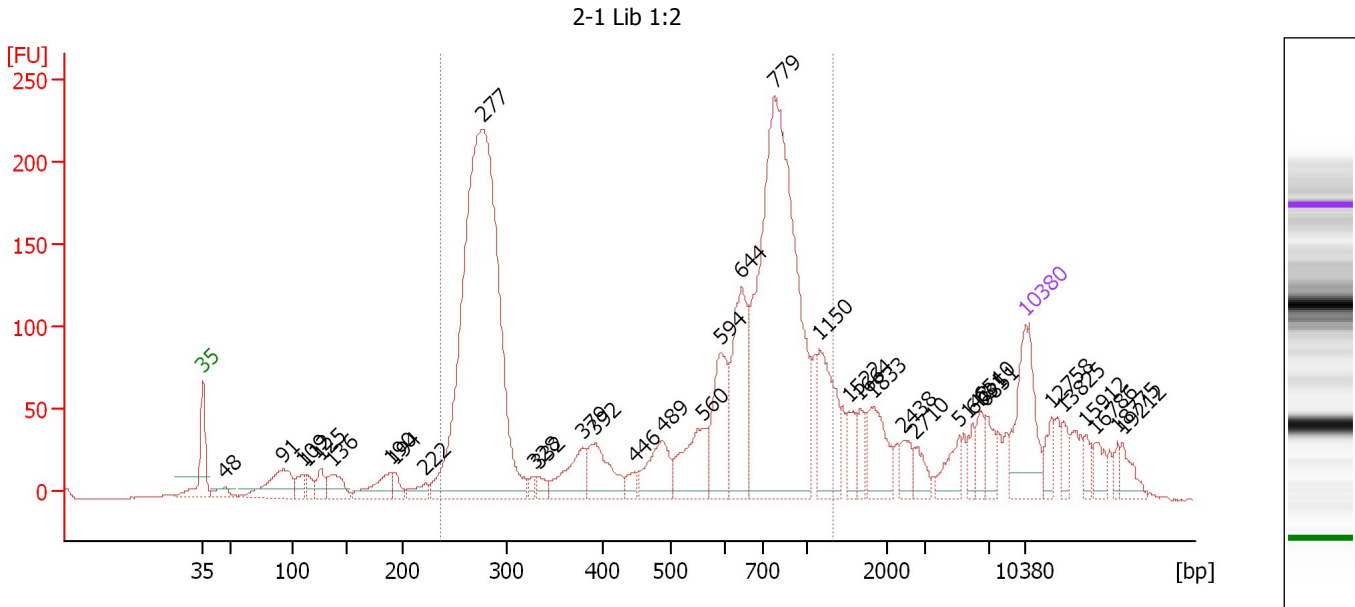
Region table for sample 1 : 1-12 Lib 1:2

From [bp]	To [bp]	Average Size [bp]	Molarity [pmol/l]	Conc. [pg/µl]	Corr. Area	% of Total	Size distribution in CV [%]	Color
568	692	625	1,898.0	781.27	536.3	70	4.6	Blue

Assay Class: High Sensitivity DNA Assay
 Data Path: C:\...ents and Settings\Bioanalyzer\2012-08-15\2012-08-15_002.xad

Created: 8/15/2012 2:13:11 PM
 Modified: 8/15/2012 5:05:59 PM

Electropherogram Summary Continued ...



Overall Results for sample 2 : 2-1 Lib 1:2

Number of peaks found: 36 Corr. Area 1: 3,230.8
 Noise: 0.1

Peak table for sample 2 : 2-1 Lib 1:2


Peak	Size [bp]	Conc. [pg/μl]	Molarity [pmol/l]	Observations
1	35	125.00	5,411.3	Lower Marker
2	48	19.27	614.4	
3	91	80.50	1,339.6	
4	109	19.19	267.4	
5	112	16.69	225.4	
6	125	23.04	278.3	
7	136	35.44	394.0	
8	190	38.45	305.9	
9	194	13.29	103.9	
10	222	15.87	108.1	
11	277	881.25	4,812.8	
12	328	7.67	35.4	
13	332	12.46	56.8	
14	379	52.26	208.9	
15	392	63.07	243.9	
16	446	10.55	35.8	
17	489	57.53	178.1	
18	560	70.83	191.8	
19	594	84.55	215.6	
20	644	122.55	288.4	
21	779	541.77	1,054.0	
22	1,150	83.66	110.2	
23	1,522	22.36	22.3	
24	1,664	17.44	15.9	
25	1,833	49.72	41.1	
26	2,438	18.06	11.2	

Assay Class: High Sensitivity DNA Assay
 Data Path: C:\...ents and Settings\Bioanalyzer\2012-08-15\2012-08-15_002.xad


Created: 8/15/2012 2:13:11 PM
 Modified: 8/15/2012 5:05:59 PM

Electropherogram Summary Continued ...

... Peak table for sample 2 : 2-1 Lib 1:2

Peak	Size [bp]	Conc. [pg/µl]	Molarity [pmol/l]	Observations
27	2,710	16.45	9.2	
28	5,143	24.27	7.2	
29	6,031	12.16	3.1	
30	6,510	17.83	4.2	
31	6,851	18.55	4.1	
32	 10,380	75.00	10.9	Upper Marker
33	12,758	0.00	0.0	
34	13,825	0.00	0.0	
35	15,912	0.00	0.0	
36	16,786	0.00	0.0	
37	18,775	0.00	0.0	
38	19,212	0.00	0.0	

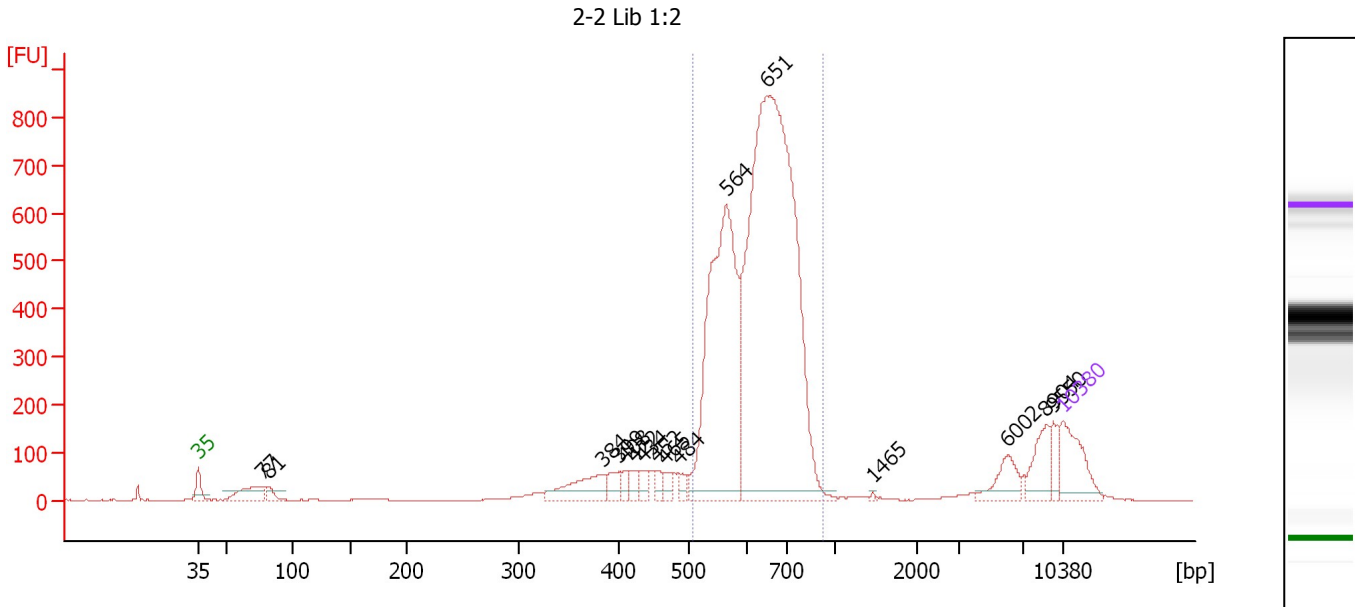
Region table for sample 2 : 2-1 Lib 1:2

From [bp]	To [bp]	Average Size [bp]	Molarity [pmol/l]	Conc. [pg/µl]	Corr. Area	% of Total	Size distribution in CV [%]	Color
238	1,316	587	7,443.5	1,986.12	3,230.8	73	47.4	

Assay Class: High Sensitivity DNA Assay
 Data Path: C:\...ents and Settings\Bioanalyzer\2012-08-15\2012-08-15_002.xad

Created: 8/15/2012 2:13:11 PM
 Modified: 8/15/2012 5:05:59 PM

Electropherogram Summary Continued ...



Setpoint Deviations for sample 3 : 2-2 Lib 1:2

Height Threshold [FU] : 20

Overall Results for sample 3 : 2-2 Lib 1:2

Number of peaks found: 16 Corr. Area 1: 6,419.8
 Noise: 0.3

Peak table for sample 3 : 2-2 Lib 1:2

Peak	Size [bp]	Conc. [pg/µl]	Molarity [pmol/l]	Observations
1	35	125.00	5,411.3	Lower Marker
2	77	72.54	1,431.2	
3	81	19.98	374.6	
4	384	89.43	352.5	
5	399	31.41	119.2	
6	408	19.80	73.6	
7	422	22.26	79.9	
8	434	21.96	76.8	
9	452	16.03	53.7	
10	465	18.45	60.1	
11	484	18.46	57.8	
12	564	644.07	1,731.1	
13	651	1,400.59	3,257.3	
14	1,465	1.71	1.8	
15	6,002	46.33	11.7	
16	8,904	53.64	9.1	
17	9,550	28.01	4.4	
18	10,380	75.00	10.9	Upper Marker

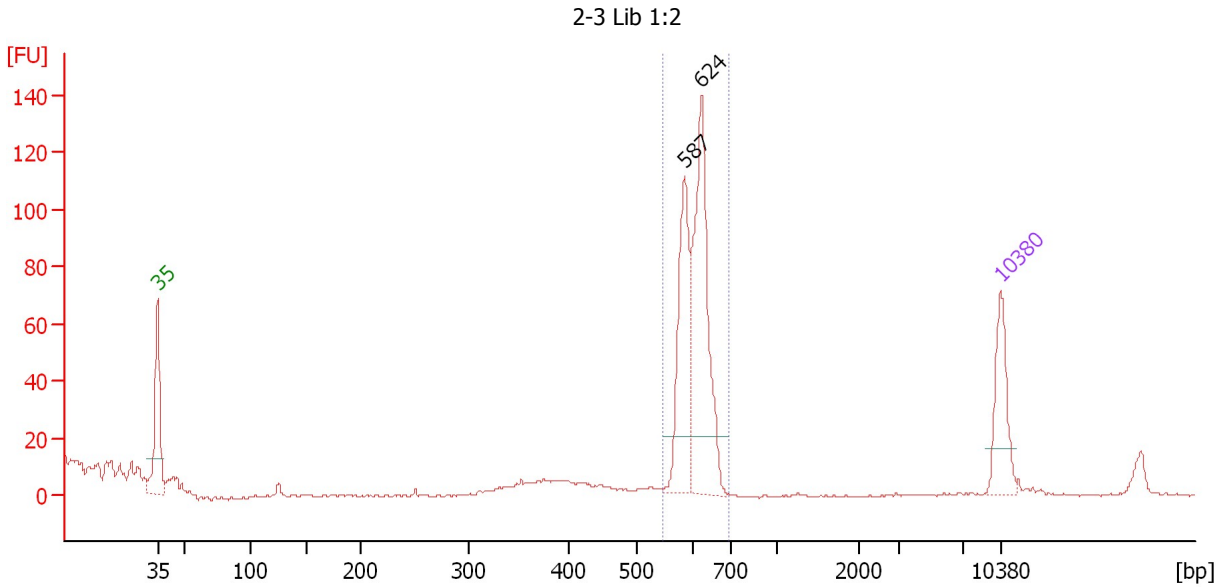
Region table for sample 3 : 2-2 Lib 1:2

From [bp]	To [bp]	Average Size [bp]	Molarity [pmol/l]	Conc. [pg/µl]	Corr. Area	% of Total	Size distribution in CV [%]	Color
505	931	641	4,888.6	2,034.37	6,419.8	79	12.3	Blue

Assay Class: High Sensitivity DNA Assay
 Data Path: C:\...ents and Settings\Bioanalyzer\2012-08-15\2012-08-15_002.xad

Created: 8/15/2012 2:13:11 PM
 Modified: 8/15/2012 5:05:59 PM

Electropherogram Summary Continued ...



Setpoint Deviations for sample 4 : 2-3 Lib 1:2

Height Threshold [FU] : 20

Overall Results for sample 4 : 2-3 Lib 1:2

Number of peaks found: 2 Corr. Area 1: 337.2
 Noise: 0.2

Peak table for sample 4 : 2-3 Lib 1:2

Peak	Size [bp]	Conc. [pg/µl]	Molarity [pmol/l]	Observations
1	35	125.00	5,411.3	Lower Marker
2	587	193.37	499.3	
3	624	291.06	707.0	
4	10,380	75.00	10.9	Upper Marker

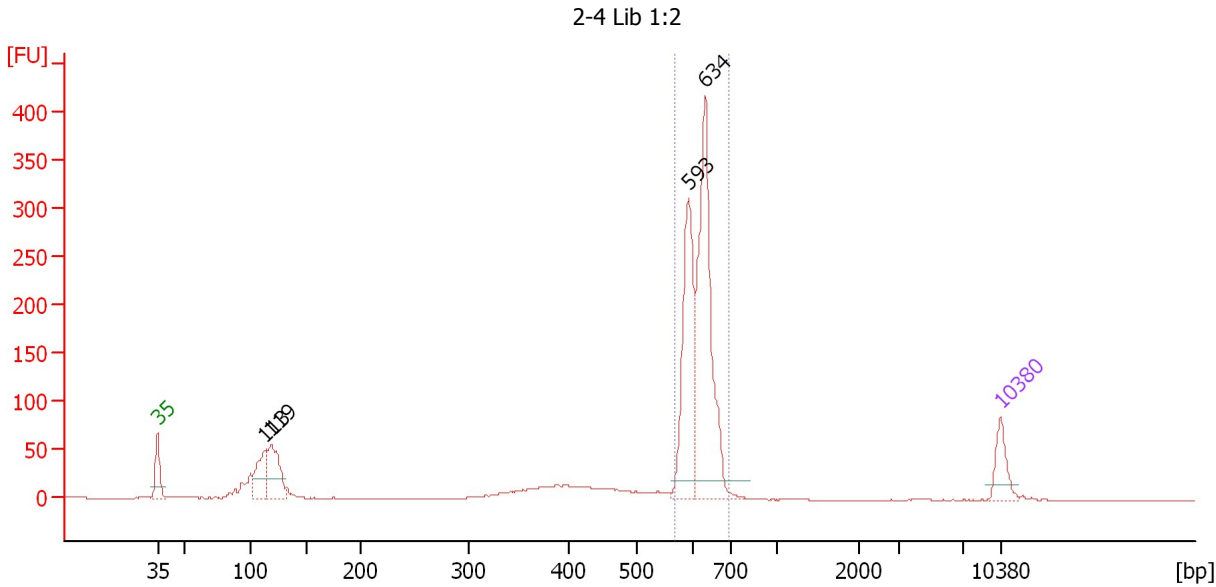
Region table for sample 4 : 2-3 Lib 1:2

From [bp]	To [bp]	Average Size [bp]	Molarity [pmol/l]	Conc. [pg/µl]	Corr. Area	% of Total	Size distribution in CV [%]	Color
547	694	609	1,154.2	463.26	337.2	79	4.0	Blue

Assay Class: High Sensitivity DNA Assay
 Data Path: C:\...ents and Settings\Bioanalyzer\2012-08-15\2012-08-15_002.xad

Created: 8/15/2012 2:13:11 PM
 Modified: 8/15/2012 5:05:59 PM

Electropherogram Summary Continued ...



Setpoint Deviations for sample 5 : 2-4 Lib 1:2

Height Threshold [FU] : 20

Overall Results for sample 5 : 2-4 Lib 1:2

Number of peaks found: 4 Corr. Area 1: 951.0
 Noise: 0.2

Peak table for sample 5 : 2-4 Lib 1:2

Peak	Size [bp]	Conc. [pg/μl]	Molarity [pmol/l]	Observations
1	35	125.00	5,411.3	Lower Marker
2	113	174.51	2,341.7	
3	119	228.47	2,905.1	
4	593	472.37	1,206.2	
5	634	703.91	1,682.6	
6	10,380	75.00	10.9	Upper Marker

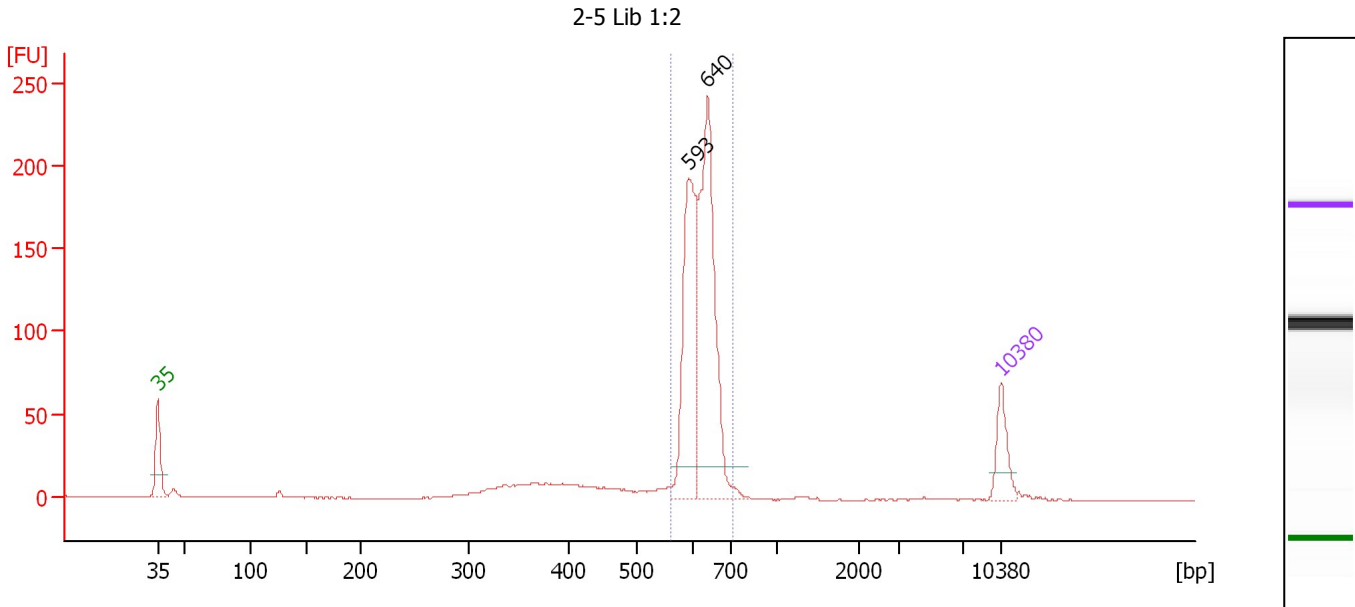
Region table for sample 5 : 2-4 Lib 1:2

From [bp]	To [bp]	Average Size [bp]	Molarity [pmol/l]	Conc. [pg/μl]	Corr. Area	% of Total	Size distribution in CV [%]	Color
569	694	618	2,855.4	1,163.65	951.0	66	4.2	Blue

Assay Class: High Sensitivity DNA Assay
 Data Path: C:\...ents and Settings\Bioanalyzer\2012-08-15\2012-08-15_002.xad

Created: 8/15/2012 2:13:11 PM
 Modified: 8/15/2012 5:05:59 PM

Electropherogram Summary Continued ...



Setpoint Deviations for sample 6 : 2-5 Lib 1:2

Height Threshold [FU] : 20

Overall Results for sample 6 : 2-5 Lib 1:2

Number of peaks found: 2 Corr. Area 1: 688.4
 Noise: 0.1

Peak table for sample 6 : 2-5 Lib 1:2

Peak	Size [bp]	Conc. [pg/µl]	Molarity [pmol/l]	Observations
1	35	125.00	5,411.3	Lower Marker
2	593	439.45	1,122.3	
3	640	632.48	1,497.1	
4	10,380	75.00	10.9	Upper Marker

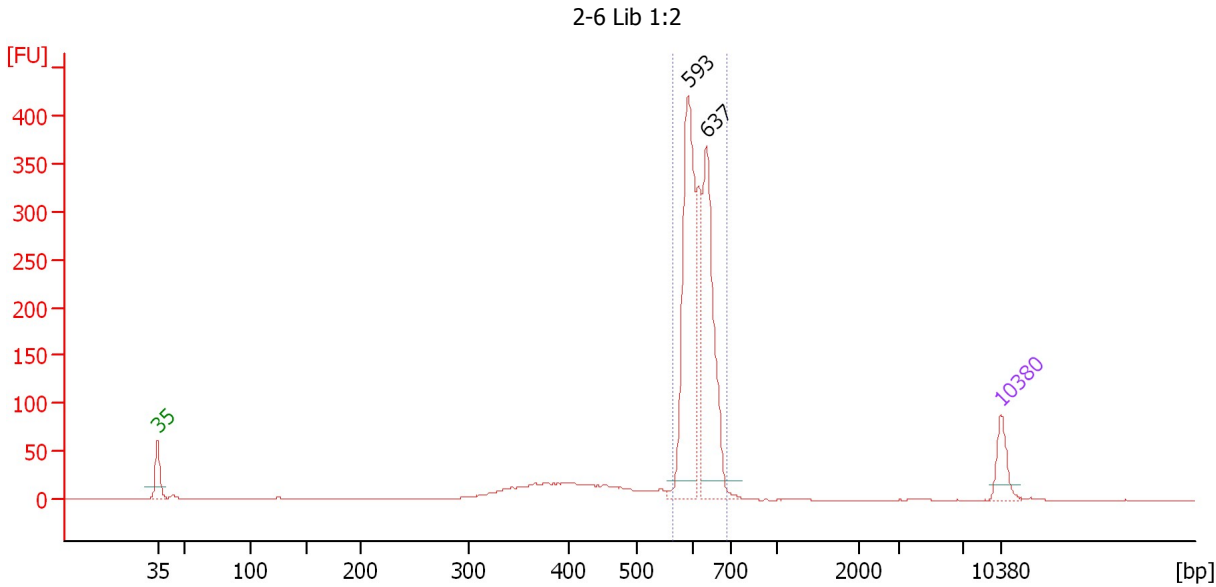
Region table for sample 6 : 2-5 Lib 1:2

From [bp]	To [bp]	Average Size [bp]	Molarity [pmol/l]	Conc. [pg/µl]	Corr. Area	% of Total	Size distribution in CV [%]	Color
562	707	622	2,583.3	1,059.42	688.4	78	4.5	Blue

Assay Class: High Sensitivity DNA Assay
 Data Path: C:\...ents and Settings\Bioanalyzer\2012-08-15\2012-08-15_002.xad

Created: 8/15/2012 2:13:11 PM
 Modified: 8/15/2012 5:05:59 PM

Electropherogram Summary Continued ...



Setpoint Deviations for sample 7 : 2-6 Lib 1:2

Height Threshold [FU] : 20

Overall Results for sample 7 : 2-6 Lib 1:2

Number of peaks found: 2 Corr. Area 1: 1,185.4
 Noise: 0.1

Peak table for sample 7 : 2-6 Lib 1:2

Peak	Size [bp]	Conc. [pg/μl]	Molarity [pmol/l]	Observations
1	35	125.00	5,411.3	Lower Marker
2	593	714.81	1,827.7	
3	637	589.39	1,402.6	
4	10,380	75.00	10.9	Upper Marker

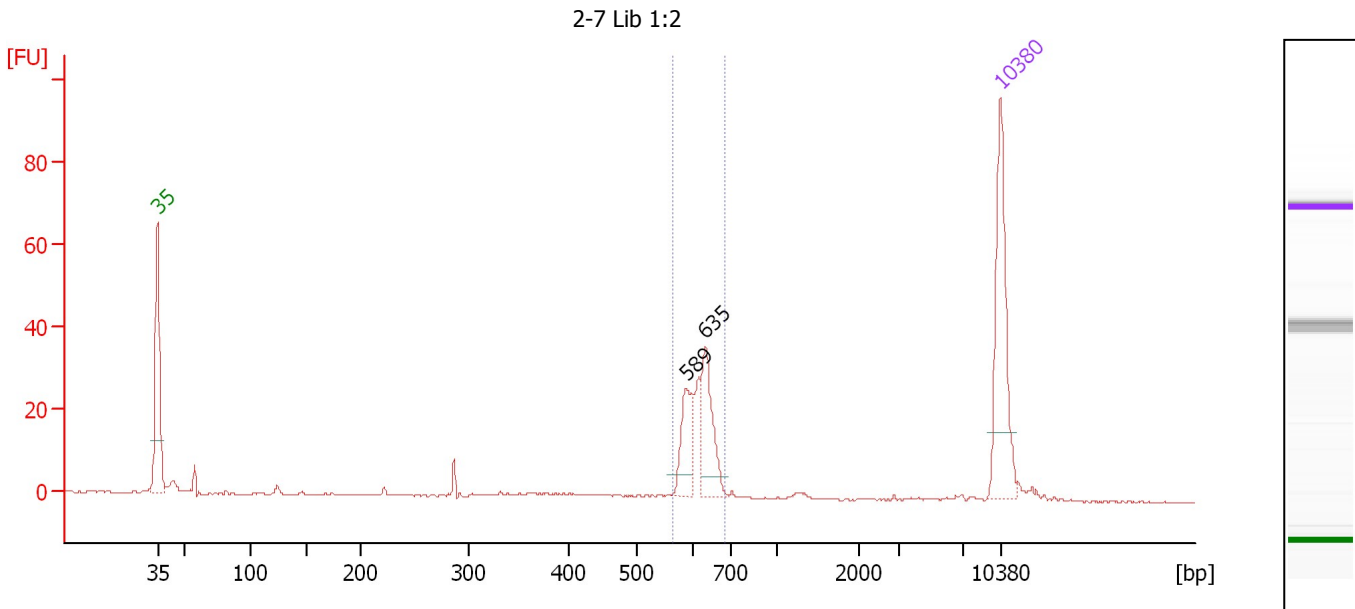
Region table for sample 7 : 2-6 Lib 1:2

From [bp]	To [bp]	Average Size [bp]	Molarity [pmol/l]	Conc. [pg/μl]	Corr. Area	% of Total	Size distribution in CV [%]	Color
566	688	617	3,688.8	1,499.07	1,185.4	79	4.3	Blue

Assay Class: High Sensitivity DNA Assay
 Data Path: C:\...ents and Settings\Bioanalyzer\2012-08-15\2012-08-15_002.xad

Created: 8/15/2012 2:13:11 PM
 Modified: 8/15/2012 5:05:59 PM

Electropherogram Summary Continued ...



Overall Results for sample 8 : 2-7 Lib 1:2

Number of peaks found: 2 Corr. Area 1: 96.7
 Noise: 0.1

Peak table for sample 8 : 2-7 Lib 1:2

Peak	Size [bp]	Conc. [pg/μl]	Molarity [pmol/l]	Observations
1	35	125.00	5,411.3	Lower Marker
2	589	37.65	96.8	
3	635	51.90	123.9	
4	10,380	75.00	10.9	Upper Marker

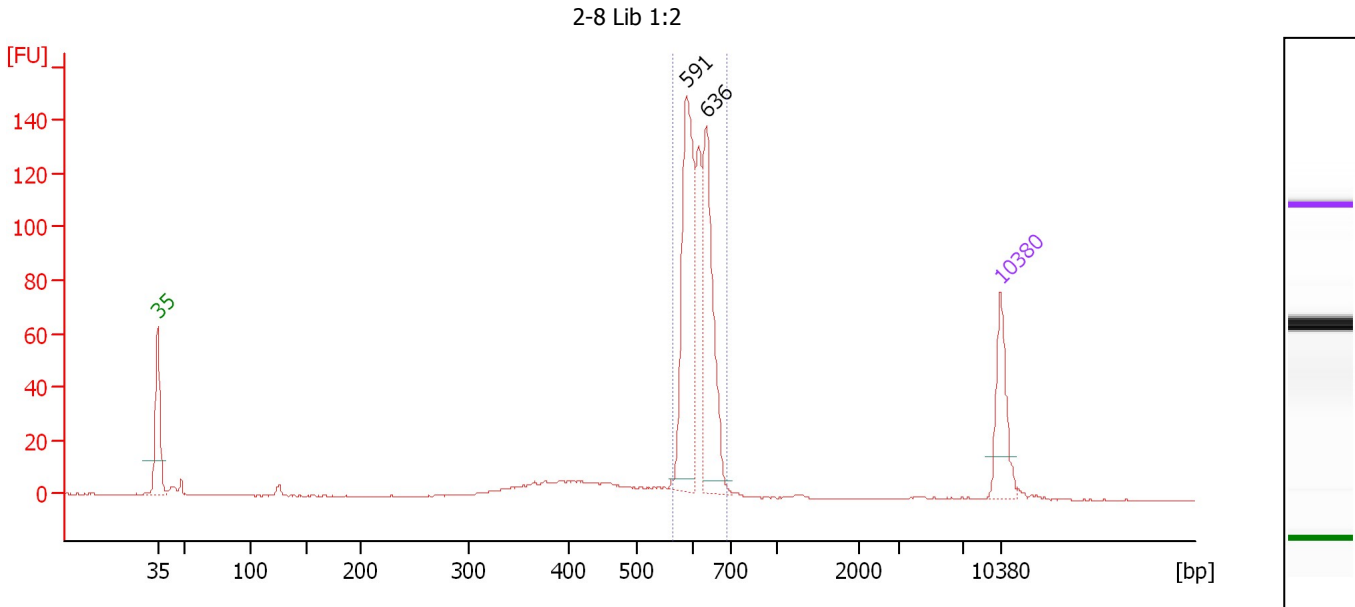
Region table for sample 8 : 2-7 Lib 1:2

From [bp]	To [bp]	Average Size [bp]	Molarity [pmol/l]	Conc. [pg/μl]	Corr. Area	% of Total	Size distribution in CV [%]	Color
565	687	618	272.9	111.18	96.7	73	4.2	Blue

Assay Class: High Sensitivity DNA Assay
 Data Path: C:\...ents and Settings\Bioanalyzer\2012-08-15\2012-08-15_002.xad

Created: 8/15/2012 2:13:11 PM
 Modified: 8/15/2012 5:05:59 PM

Electropherogram Summary Continued ...



Overall Results for sample 9 : 2-8 Lib 1:2

Number of peaks found: 2 Corr. Area 1: 444.1
 Noise: 0.1

Peak table for sample 9 : 2-8 Lib 1:2

Peak	Size [bp]	Conc. [pg/μl]	Molarity [pmol/l]	Observations
1	35	125.00	5,411.3	Lower Marker
2	591	285.84	733.2	
3	636	221.35	527.2	
4	10,380	75.00	10.9	Upper Marker

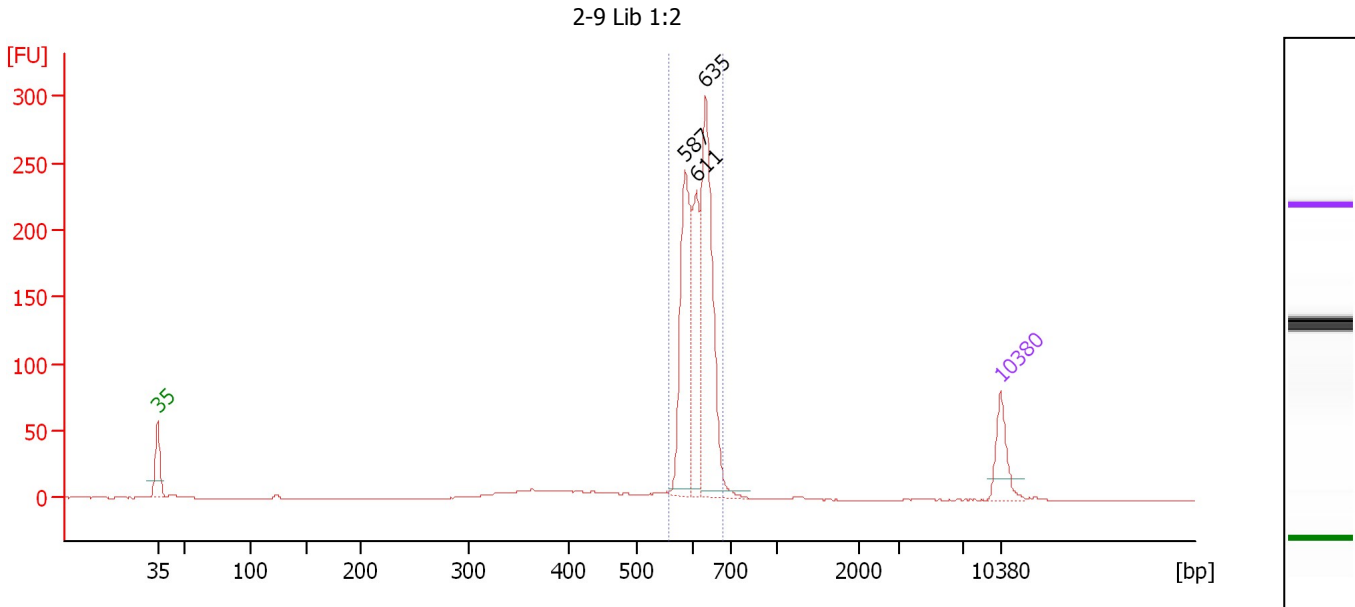
Region table for sample 9 : 2-8 Lib 1:2

From [bp]	To [bp]	Average Size [bp]	Molarity [pmol/l]	Conc. [pg/μl]	Corr. Area	% of Total	Size distribution in CV [%]	Color
566	689	616	1,577.7	639.98	444.1	80	4.3	Blue

Assay Class: High Sensitivity DNA Assay
 Data Path: C:\...ents and Settings\Bioanalyzer\2012-08-15\2012-08-15_002.xad

Created: 8/15/2012 2:13:11 PM
 Modified: 8/15/2012 5:05:59 PM

Electropherogram Summary Continued ...



Overall Results for sample 10 : 2-9 Lib 1:2

Number of peaks found: 3 Corr. Area 1: 828.3
 Noise: 0.1

Peak table for sample 10 : 2-9 Lib 1:2

Peak	Size [bp]	Conc. [pg/μl]	Molarity [pmol/l]	Observations
1	35	125.00	5,411.3	Lower Marker
2	587	383.47	989.3	
3	611	236.07	585.0	
4	635	503.14	1,200.8	
5	10,380	75.00	10.9	Upper Marker

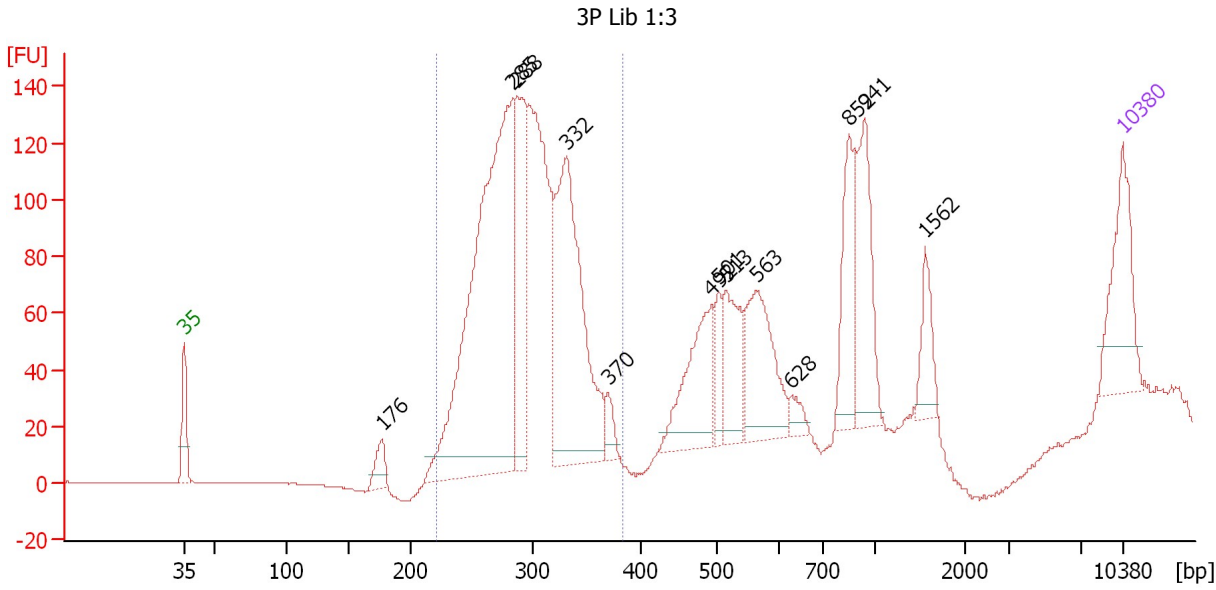
Region table for sample 10 : 2-9 Lib 1:2

From [bp]	To [bp]	Average Size [bp]	Molarity [pmol/l]	Conc. [pg/μl]	Corr. Area	% of Total	Size distribution in CV [%]	Color
557	679	616	2,772.2	1,124.46	828.3	85	4.3	Blue

Assay Class: High Sensitivity DNA Assay
 Data Path: C:\...ents and Settings\Bioanalyzer\2012-08-15\2012-08-15_002.xad

Created: 8/15/2012 2:13:11 PM
 Modified: 8/15/2012 5:05:59 PM

Electropherogram Summary Continued ...



Overall Results for sample 11 : 3P Lib 1:3

Number of peaks found: 13 Corr. Area 1: 1,612.1
 Noise: 0.1

Peak table for sample 11 : 3P Lib 1:3

Peak	Size [bp]	Conc. [pg/μl]	Molarity [pmol/l]	Observations
1	35	125.00	5,411.3	Lower Marker
2	176	30.35	260.9	
3	285	669.42	3,561.5	
4	288	190.25	999.8	
5	332	346.89	1,583.5	
6	370	19.67	80.6	
7	492	121.07	372.8	
8	501	32.93	99.5	
9	513	80.54	237.6	
10	563	120.22	323.7	
11	628	14.09	34.0	
12	852	91.54	162.9	
13	941	106.81	171.9	
14	1,562	36.00	34.9	
15	10,380	75.00	10.9	Upper Marker

Region table for sample 11 : 3P Lib 1:3

From [bp]	To [bp]	Average Size [bp]	Molarity [pmol/l]	Conc. [pg/μl]	Corr. Area	% of Total	Size distribution in CV [%]	Color
222	382	296	7,493.6	1,443.22	1,612.1	66	10.8	Blue

Assay Class: High Sensitivity DNA Assay
Data Path: C:\...ents and Settings\Bioanalyzer\2012-08-15\2012-08-15_002.xad

Created: 8/15/2012 2:13:11 PM
Modified: 8/15/2012 5:05:59 PM

Gel Image

