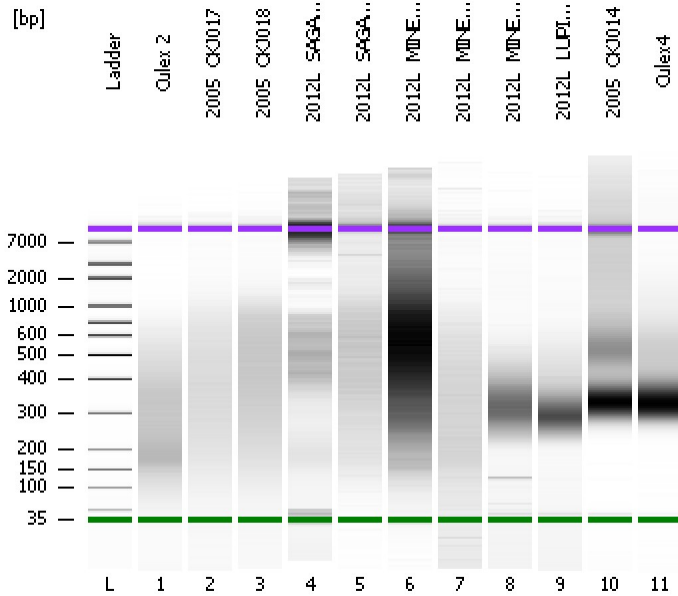


Assay Class: High Sensitivity DNA Assay
Data Path: C:\...ents and Settings\Bioanalyzer\2012-08-15\2012-08-15_003.xad

Created: 8/15/2012 3:25:31 PM
Modified: 8/15/2012 4:25:10 PM

Electrophoresis File Run Summary



Instrument Information:

Instrument Name: DE13701086 Firmware: C.01.069
Serial#: DE13701086 Type: G2938B

Assay Information:

Assay Origin Path: C:\Program Files\Agilent\2100 bioanalyzer\2100 expert\assays\dsDNA\High Sensitivity DNA.xsy
Assay Class: High Sensitivity DNA Assay
Version: 1.03
Assay Comments: Copyright © 2003-2010 Agilent Technologies

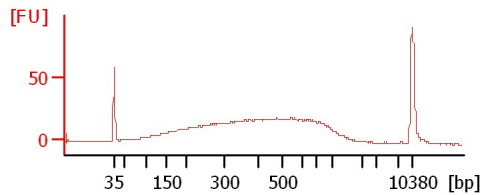
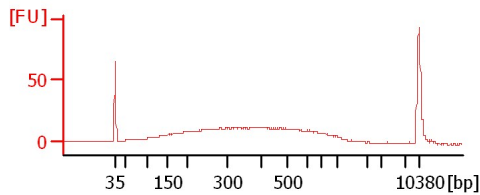
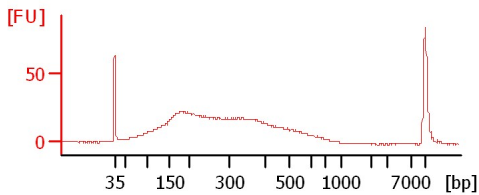
Chip Information:

Chip Lot #:
Reagent Kit Lot #:
Chip Comments:

Culex 2

2005_OKJ017

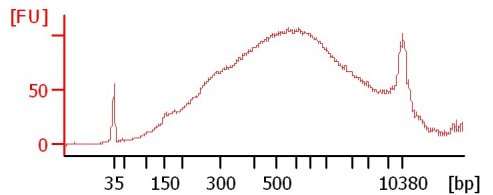
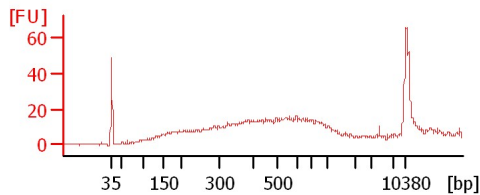
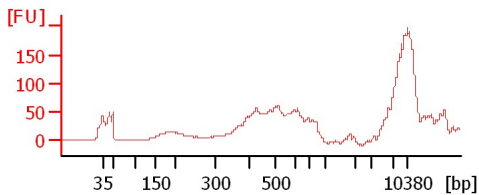
2005_OKJ018



2012L_SAGA105

2012L_SAGA131

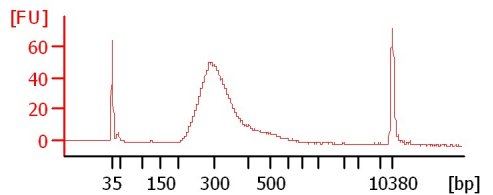
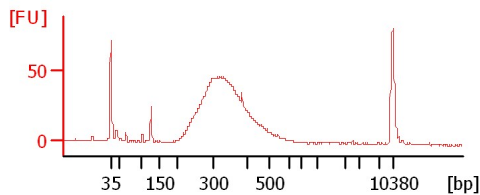
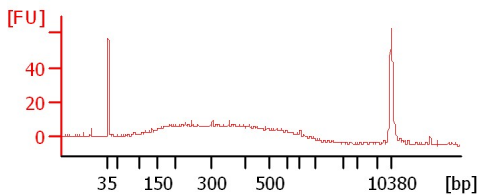
2012L_MINE001



2012L_MINE109

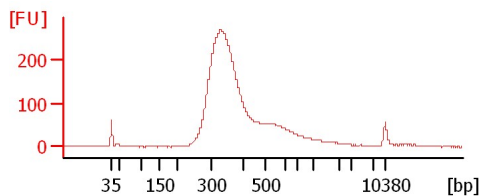
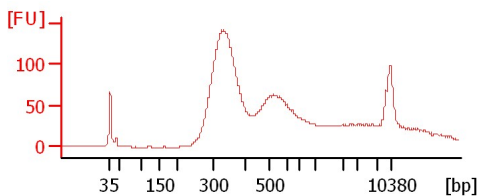
2012L_MINE003

2012L_LUPI_087



2005_OKJ014

Culex4



Assay Class: High Sensitivity DNA Assay
Data Path: C:\...ents and Settings\Bioanalyzer\2012-08-15\2012-08-15_003.xad

Created: 8/15/2012 3:25:31 PM
Modified: 8/15/2012 4:25:10 PM

Electrophoresis File Run Summary (Chip Summary)

Sample Name	Sample Comment	Rest. Digest	Status	Observation	Result Label	Result Color
Culex 2		<input type="checkbox"/>	✓			
2005_OKJ017		<input type="checkbox"/>	✓			
2005_OKJ018		<input type="checkbox"/>	✓			
2012L_SAGA105		<input type="checkbox"/>	✓			
2012L_SAGA131		<input type="checkbox"/>	✓			
2012L_MINE001		<input type="checkbox"/>	✓			
2012L_MINE109		<input type="checkbox"/>	✓			
2012L_MINE003		<input type="checkbox"/>	✓			
2012L_LUPI_087		<input type="checkbox"/>	✓			
2005_OKJ014		<input type="checkbox"/>	✓			
Culex4		<input type="checkbox"/>	✓			
Ladder		<input type="checkbox"/>	✓			

Chip Lot #

Reagent Kit Lot #

Chip Comments :

Assay Class: High Sensitivity DNA Assay
Data Path: C:\...ents and Settings\Bioanalyzer\2012-08-15\2012-08-15_003.xad

Created: 8/15/2012 3:25:31 PM
Modified: 8/15/2012 4:25:10 PM

Electrophoresis Assay Details

General Analysis Settings

Number of Available Sample and Ladder Wells (Max.) : 12
Minimum Visible Range [s] : 32
Maximum Visible Range [s] : 138
Start Analysis Time Range [s] : 33
End Analysis Time Range [s] : 137.5
Ladder Concentration [pg/μl] : 1950
Uses Standard Area for Ladder Fragments
Lower Marker Concentration [pg/μl] : 125
Upper Marker Concentration [pg/μl] : 75
Used Upper Marker for Quantitation
Standard Curve Fit is Point to Point
Show Data Aligned to Lower and Upper Marker

Integrator Settings

Integration Start Time [s] : 33.05
Integration End Time [s] : 137
Slope Threshold : 0.8
Height Threshold [FU] : 5
Area Threshold : 0.1
Width Threshold [s] : 0.6
Baseline Plateau [s] : 0.5

Filter Settings

Filter Width [s] : 0.5
Polynomial Order : 4

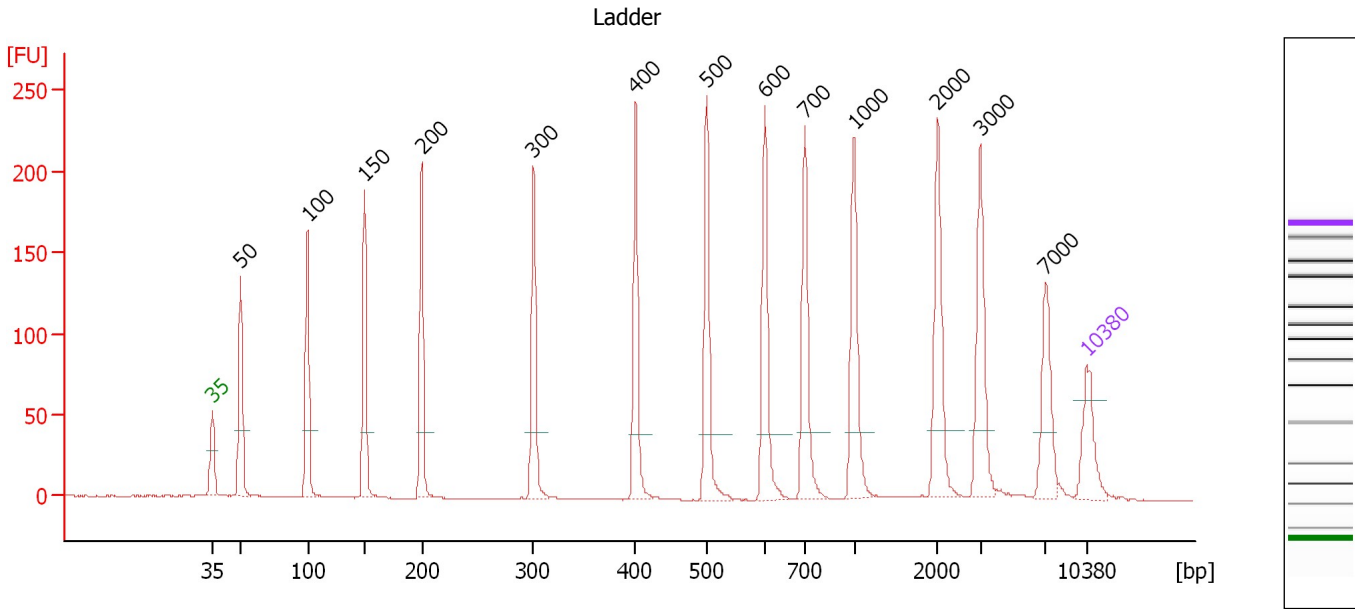
Ladder

Ladder Peak	Size	Area
1	35	160
2	50	210
3	100	208
4	150	221
5	200	242
6	300	270
7	400	305
8	500	306
9	600	336
10	700	321
11	1000	366
12	2000	413
13	3000	411
14	7000	400
15	10380	214

Assay Class: High Sensitivity DNA Assay
 Data Path: C:\...ents and Settings\Bioanalyzer\2012-08-15\2012-08-15_003.xad

Created: 8/15/2012 3:25:31 PM
 Modified: 8/15/2012 4:25:10 PM

Electropherogram Summary



Overall Results for Ladder

Noise: 0.2

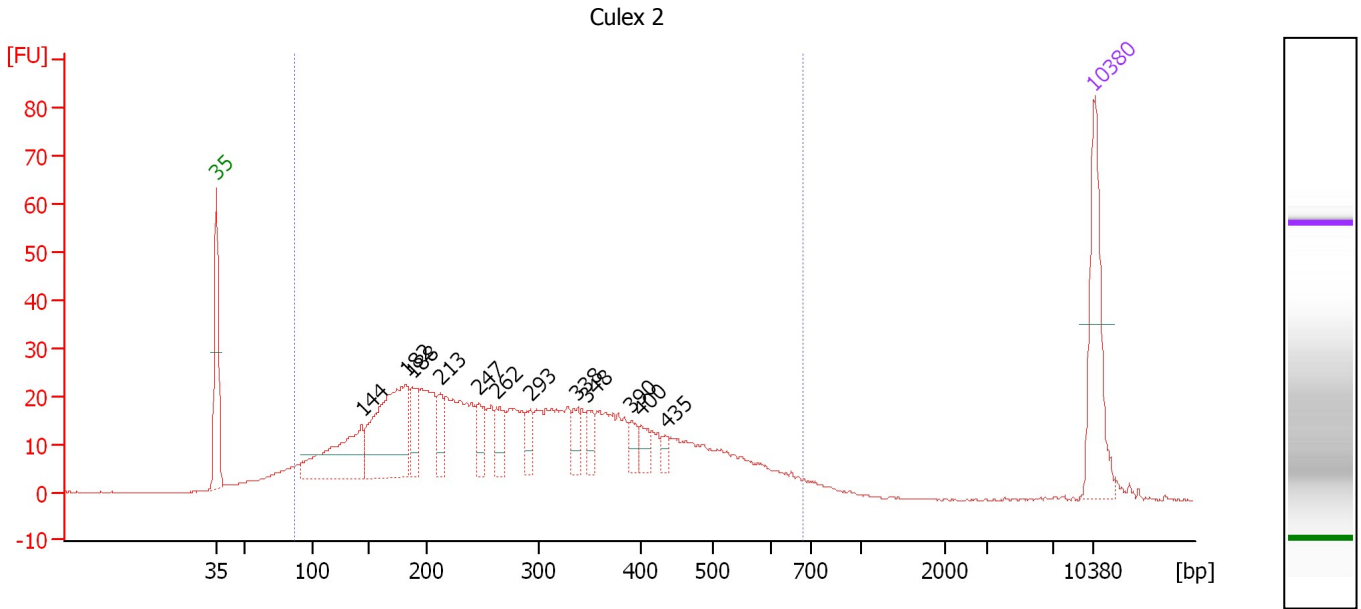
Peak table for Ladder

Peak	Size [bp]	Conc. [pg/μl]	Molarity [pmol/l]	Observations
1	35	125.00	5,411.3	Lower Marker
2	50	150.00	4,545.5	Ladder Peak
3	100	150.00	2,272.7	Ladder Peak
4	150	150.00	1,515.2	Ladder Peak
5	200	150.00	1,136.4	Ladder Peak
6	300	150.00	757.6	Ladder Peak
7	400	150.00	568.2	Ladder Peak
8	500	150.00	454.5	Ladder Peak
9	600	150.00	378.8	Ladder Peak
10	700	150.00	324.7	Ladder Peak
11	1,000	150.00	227.3	Ladder Peak
12	2,000	150.00	113.6	Ladder Peak
13	3,000	150.00	75.8	Ladder Peak
14	7,000	150.00	32.5	Ladder Peak
15	10,380	75.00	10.9	Upper Marker

Assay Class: High Sensitivity DNA Assay
 Data Path: C:\...ents and Settings\Bioanalyzer\2012-08-15\2012-08-15_003.xad

Created: 8/15/2012 3:25:31 PM
 Modified: 8/15/2012 4:25:10 PM

Electropherogram Summary Continued ...



Overall Results for sample 1 : Culex 2

Number of peaks found: 12 Corr. Area 1: 921.4
 Noise: 0.2

Peak table for sample 1 : Culex 2

Peak	Size [bp]	Conc. [pg/μl]	Molarity [pmol/l]	Observations
1	35	125.00	5,411.3	Lower Marker
2	144	126.17	1,328.9	
3	182	178.53	1,486.2	
4	188	34.35	277.4	
5	213	27.10	192.8	
6	247	29.58	181.8	
7	262	28.40	164.0	
8	293	20.04	103.8	
9	338	20.39	91.5	
10	348	18.23	79.4	
11	390	15.54	60.3	
12	400	15.07	57.0	
13	435	7.98	27.8	
14	10,380	75.00	10.9	Upper Marker

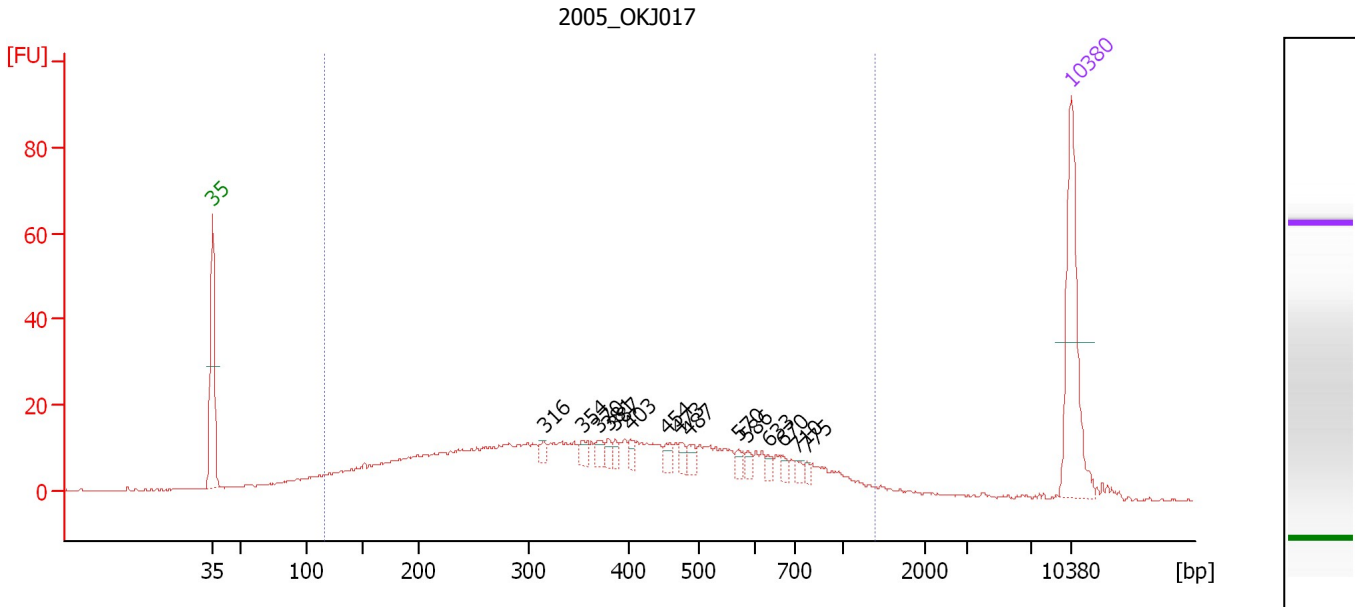
Region table for sample 1 : Culex 2

From [bp]	To [bp]	Average Size [bp]	Molarity [pmol/l]	Conc. [pg/μl]	Corr. Area	% of Total	Size distribution in CV [%]	Color
87	678	298	9,970.2	1,445.08	921.4	94	43.0	Blue

Assay Class: High Sensitivity DNA Assay
 Data Path: C:\...ents and Settings\Bioanalyzer\2012-08-15\2012-08-15_003.xad

Created: 8/15/2012 3:25:31 PM
 Modified: 8/15/2012 4:25:10 PM

Electropherogram Summary Continued ...



Overall Results for sample 2 : 2005_OKJ017

Number of peaks found: 15 Corr. Area 1: 608.2
 Noise: 0.1

Peak table for sample 2 : 2005_OKJ017

Peak	Size [bp]	Conc. [pg/μl]	Molarity [pmol/l]	Observations
1	35	125.00	5,411.3	Lower Marker
2	316	5.89	28.3	
3	354	8.26	35.3	
4	370	8.17	33.4	
5	381	6.14	24.4	
6	387	6.07	23.8	
7	403	6.24	23.5	
8	454	8.06	26.9	
9	473	6.11	19.6	
10	487	8.04	25.0	
11	570	5.59	14.9	
12	586	4.61	11.9	
13	633	4.27	10.2	
14	670	5.76	13.0	
15	710	4.80	10.3	
16	775	3.34	6.5	
17	10,380	75.00	10.9	Upper Marker

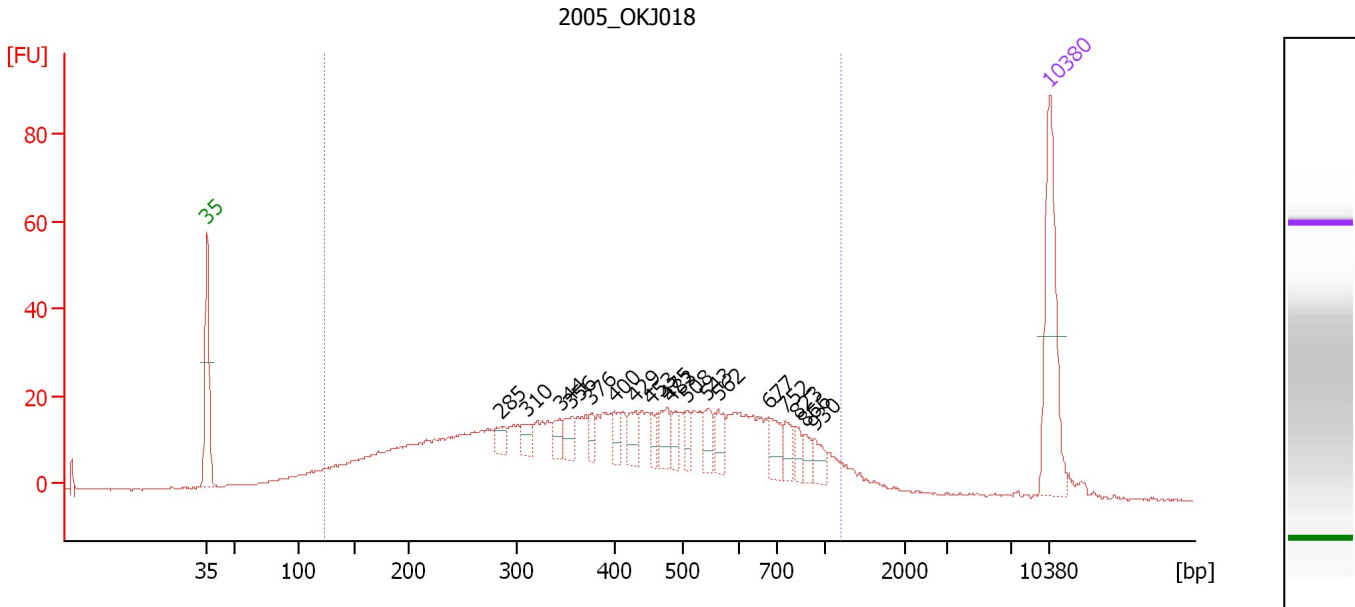
Region table for sample 2 : 2005_OKJ017

From [bp]	To [bp]	Average Size [bp]	Molarity [pmol/l]	Conc. [pg/μl]	Corr. Area	% of Total	Size distribution in CV [%]	Color
117	1,386	415	4,239.9	807.56	608.2	90	50.9	Blue

Assay Class: High Sensitivity DNA Assay
 Data Path: C:\...ents and Settings\Bioanalyzer\2012-08-15\2012-08-15_003.xad

Created: 8/15/2012 3:25:31 PM
 Modified: 8/15/2012 4:25:10 PM

Electropherogram Summary Continued ...



Overall Results for sample 3 : 2005_OKJ018

Number of peaks found: 18 Corr. Area 1: 926.6
 Noise: 0.2

Peak table for sample 3 : 2005_OKJ018

Peak	Size [bp]	Conc. [pg/μl]	Molarity [pmol/l]	Observations
1	35	125.00	5,411.3	Lower Marker
2	285	13.42	71.3	
3	310	14.71	71.8	
4	344	13.64	60.1	
5	356	16.83	71.6	
6	376	10.72	43.2	
7	400	12.86	48.7	
8	429	17.98	63.6	
9	453	11.10	37.1	
10	475	20.57	65.6	
11	483	12.49	39.2	
12	508	11.67	34.8	
13	543	15.89	44.4	
14	562	17.73	47.8	
15	677	20.70	46.3	
16	752	13.01	26.2	
17	823	10.20	18.8	
18	866	9.25	16.2	
19	930	11.61	18.9	
20	10,380	75.00	10.9	Upper Marker

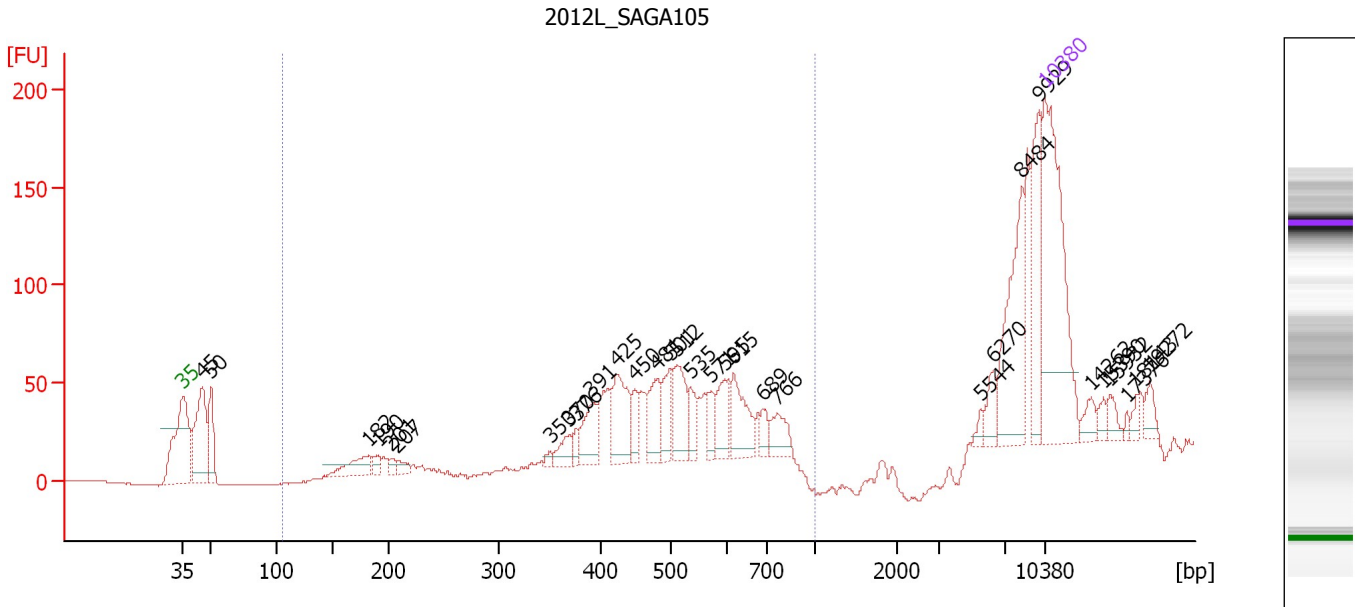
Region table for sample 3 : 2005_OKJ018

From [bp]	To [bp]	Average Size [bp]	Molarity [pmol/l]	Conc. [pg/μl]	Corr. Area	% of Total	Size distribution in CV [%]	Color
123	1,206	443	5,895.3	1,205.40	926.6	86	47.8	Blue

Assay Class: High Sensitivity DNA Assay
 Data Path: C:\...ents and Settings\Bioanalyzer\2012-08-15\2012-08-15_003.xad

Created: 8/15/2012 3:25:31 PM
 Modified: 8/15/2012 4:25:10 PM

Electropherogram Summary Continued ...



Overall Results for sample 4 : 2012L_SAGA105

Number of peaks found: 31 Corr. Area 1: 868.7
 Noise: 0.2

Peak table for sample 4 : 2012L_SAGA105

Peak	Size [bp]	Conc. [pg/μl]	Molarity [pmol/l]	Observations
1	35	125.00	5,411.3	Lower Marker
2	45	63.66	2,127.5	
3	50	26.34	799.2	
4	182	19.37	160.9	
5	190	5.72	45.5	
6	201	3.97	29.9	
7	207	4.88	35.7	
8	350	2.59	11.2	
9	370	10.03	41.1	
10	376	5.03	20.2	
11	391	19.87	77.0	
12	425	30.19	107.7	
13	450	10.05	33.9	
14	481	20.63	65.0	
15	501	15.87	48.0	
16	512	24.02	71.1	
17	535	10.58	30.0	
18	571	9.85	26.1	
19	595	16.88	43.0	
20	615	22.67	55.8	
21	689	6.56	14.4	
22	766	12.01	23.7	
23	5,544	2.98	0.8	
24	6,270	8.47	2.0	
25	8,484	44.17	7.9	
26	9,929	33.07	5.0	

Assay Class: High Sensitivity DNA Assay
 Data Path: C:\...ents and Settings\Bioanalyzer\2012-08-15\2012-08-15_003.xad

Created: 8/15/2012 3:25:31 PM
 Modified: 8/15/2012 4:25:10 PM

Electropherogram Summary Continued ...

... Peak table for sample 4 : 2012L SAGA105

Peak	Size [bp]	Conc. [pg/μl]	Molarity [pmol/l]	Observations
27	10,380	75.00	10.9	Upper Marker
28	14,262	0.00	0.0	
29	15,390	0.00	0.0	
30	15,932	0.00	0.0	
31	17,376	0.00	0.0	
32	18,143	0.00	0.0	
33	19,272	0.00	0.0	

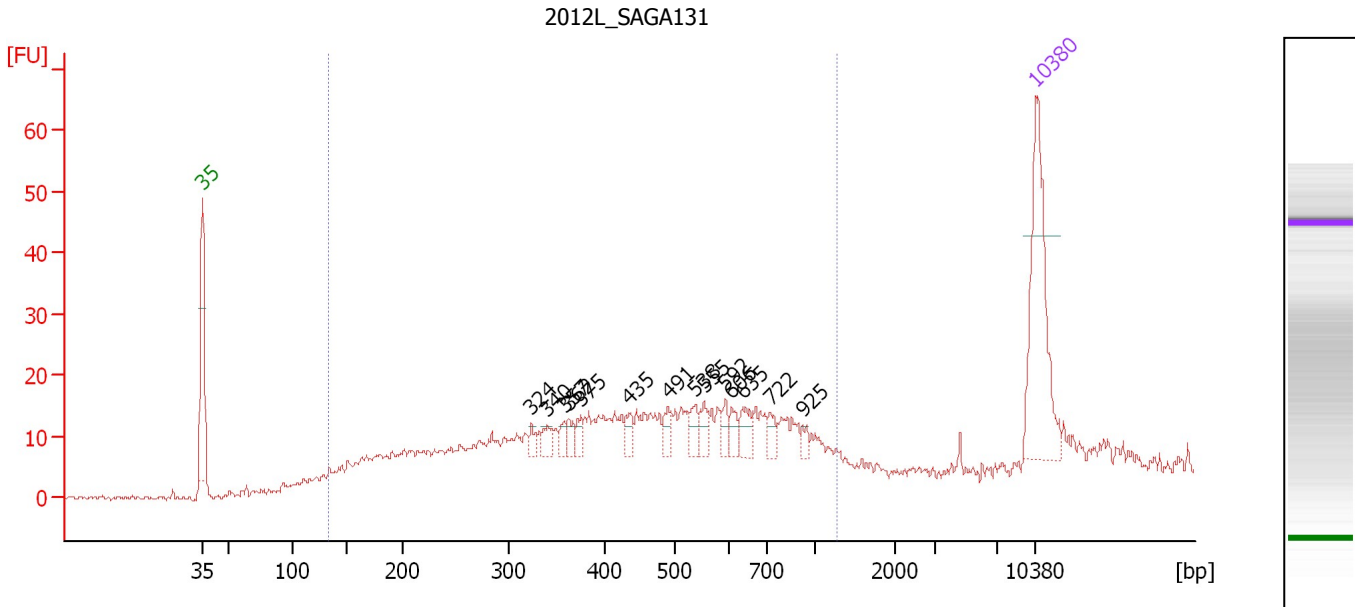
Region table for sample 4 : 2012L SAGA105

From [bp]	To [bp]	Average Size [bp]	Molarity [pmol/l]	Conc. [pg/μl]	Corr. Area	% of Total	Size distribution in CV [%]	Color
105	1,000	502	1,048.3	292.89	868.7	54	25.9	

Assay Class: High Sensitivity DNA Assay
 Data Path: C:\...ents and Settings\Bioanalyzer\2012-08-15\2012-08-15_003.xad

Created: 8/15/2012 3:25:31 PM
 Modified: 8/15/2012 4:25:10 PM

Electropherogram Summary Continued ...



Overall Results for sample 5 : 2012L_SAGA131

Number of peaks found: 14 Corr. Area 1: 375.7
 Noise: 0.6

Peak table for sample 5 : 2012L_SAGA131

Peak	Size [bp]	Conc. [pg/μl]	Molarity [pmol/l]	Observations
1	35	125.00	5,411.3	Lower Marker
2	324	5.79	27.1	
3	340	8.64	38.5	
4	357	7.11	30.2	
5	362	7.69	32.2	
6	375	8.28	33.5	
7	435	8.34	29.0	
8	491	10.19	31.4	
9	538	11.04	31.1	
10	555	10.43	28.5	
11	592	7.65	19.6	
12	606	8.81	22.0	
13	635	12.59	30.0	
14	722	8.15	17.1	
15	925	4.23	6.9	
16	10,380	75.00	10.9	Upper Marker

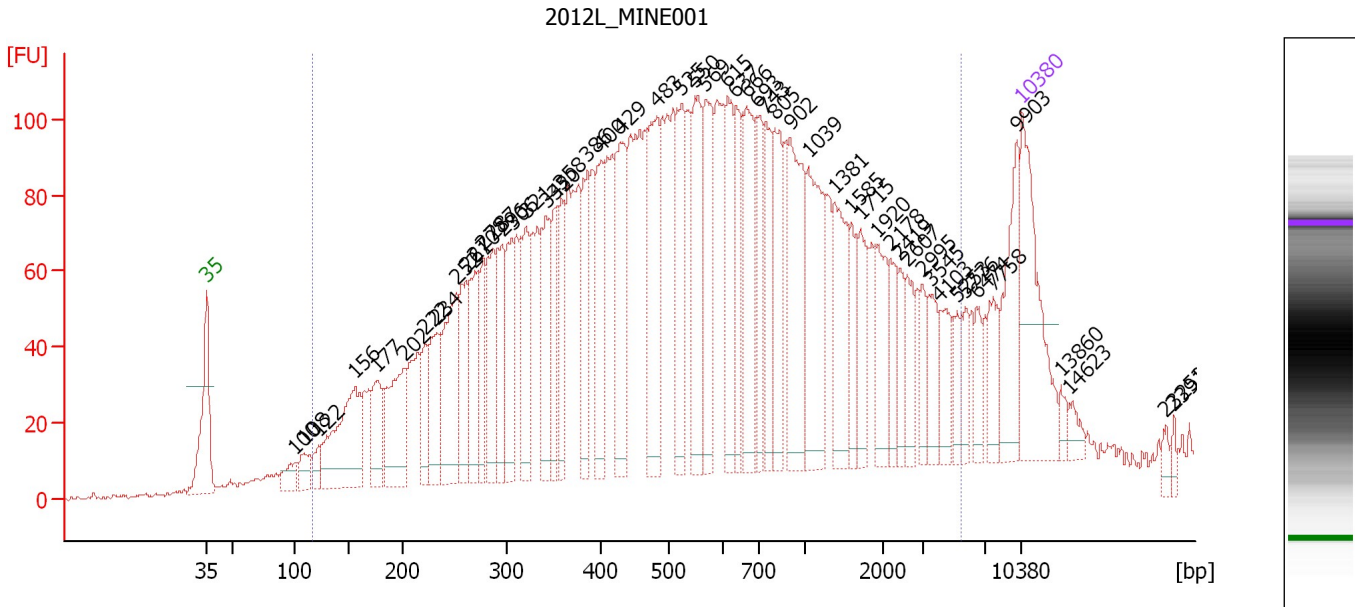
Region table for sample 5 : 2012L_SAGA131

From [bp]	To [bp]	Average Size [bp]	Molarity [pmol/l]	Conc. [pg/μl]	Corr. Area	% of Total	Size distribution in CV [%]	Color
133	1,287	455	2,562.9	555.94	375.7	98	44.9	Blue

Assay Class: High Sensitivity DNA Assay
 Data Path: C:\...ents and Settings\Bioanalyzer\2012-08-15\2012-08-15_003.xad

Created: 8/15/2012 3:25:31 PM
 Modified: 8/15/2012 4:25:10 PM

Electropherogram Summary Continued ...



Overall Results for sample 6 : 2012L_MINE001

Number of peaks found: 53 Corr. Area 1: 4,413.5
 Noise: 0.5

Peak table for sample 6 : 2012L_MINE001

Peak	Size [bp]	Conc. [pg/μl]	Molarity [pmol/l]	Observations
1	35	125.00	5,411.3	Lower Marker
2	100	19.00	289.2	
3	108	20.84	291.1	
4	122	13.50	168.4	
5	156	116.93	1,135.2	
6	177	46.21	395.3	
7	202	80.88	606.1	
8	222	33.10	225.8	
9	234	54.09	350.4	
10	252	94.94	570.3	
11	261	51.94	301.0	
12	270	56.65	318.4	
13	278	42.03	228.9	
14	287	59.74	314.9	
15	296	56.45	288.8	
16	306	53.19	263.5	
17	321	62.94	297.1	
18	342	65.82	291.8	
19	350	43.69	189.1	
20	358	44.23	187.2	
21	386	55.18	216.9	
22	400	62.86	238.4	
23	429	86.36	305.0	
24	483	88.61	277.7	
25	525	69.12	199.5	
26	550	71.09	195.7	

Assay Class: High Sensitivity DNA Assay
 Data Path: C:\...ents and Settings\Bioanalyzer\2012-08-15\2012-08-15_003.xad

Created: 8/15/2012 3:25:31 PM
 Modified: 8/15/2012 4:25:10 PM

Electropherogram Summary Continued ...

... Peak table for sample 6 : 2012L MINE001

Peak	Size [bp]	Conc. [pg/µl]	Molarity [pmol/l]	Observations
27	569	72.23	192.3	
28	615	59.11	145.6	
29	637	45.26	107.7	
30	666	70.72	160.9	
31	693	44.47	97.2	
32	743	48.19	98.2	
33	805	59.55	112.0	
34	902	84.97	142.7	
35	1,039	79.27	115.6	
36	1,381	55.24	60.6	
37	1,585	27.17	26.0	
38	1,715	28.58	25.2	
39	1,920	32.40	25.6	
40	2,178	21.32	14.8	
41	2,419	15.51	9.7	
42	2,607	21.32	12.4	
43	2,995	13.79	7.0	
44	3,545	21.86	9.3	
45	4,103	21.12	7.8	
46	5,253	11.51	3.3	
47	5,776	13.51	3.5	
48	6,474	14.20	3.3	
49	7,758	21.75	4.2	
50	9,903	48.02	7.3	
51	10,380	75.00	10.9	Upper Marker
52	13,860	0.00	0.0	
53	14,623	0.00	0.0	
54	23,252	0.00	0.0	
55	23,919	0.00	0.0	

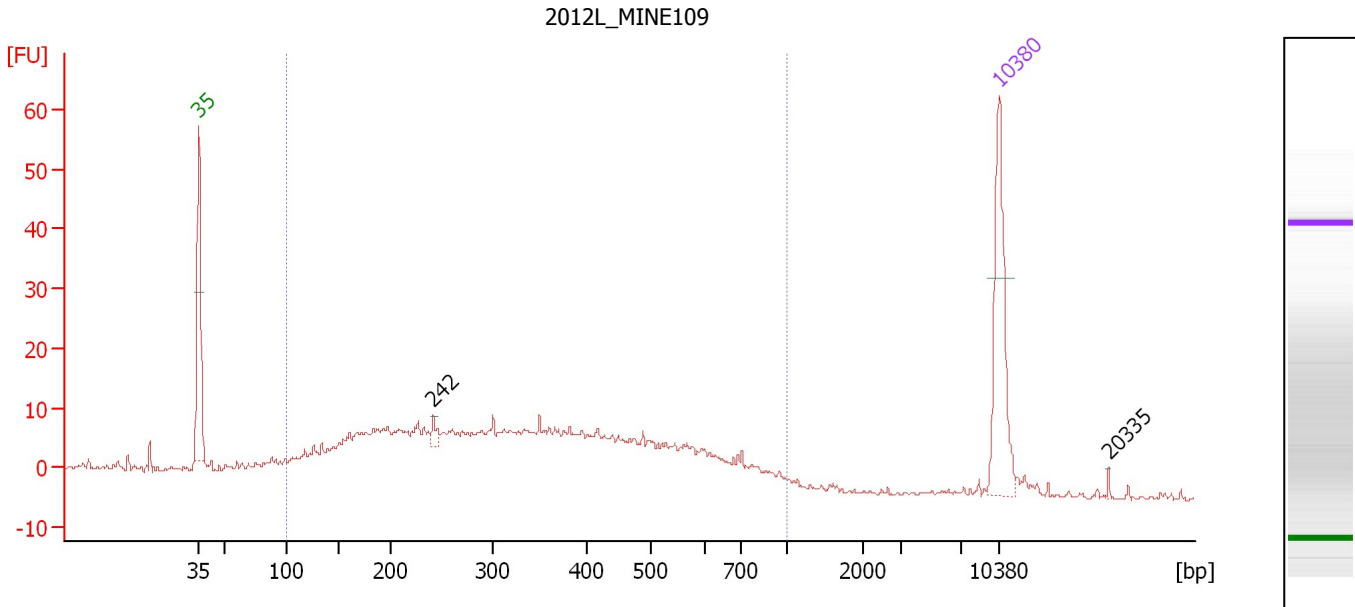
Region table for sample 6 : 2012L MINE001

From [bp]	To [bp]	Average Size [bp]	Molarity [pmol/l]	Conc. [pg/µl]	Corr. Area	% of Total	Size distribution in CV [%]	Color
116	5,497	834	12,152.9	3,081.28	4,413.5	93	100.0	■

Assay Class: High Sensitivity DNA Assay
 Data Path: C:\...ents and Settings\Bioanalyzer\2012-08-15\2012-08-15_003.xad

Created: 8/15/2012 3:25:31 PM
 Modified: 8/15/2012 4:25:10 PM

Electropherogram Summary Continued ...



Overall Results for sample 7 : 2012L_MINE109

Number of peaks found: 2 Corr. Area 1: 425.4
 Noise: 0.5

Peak table for sample 7 : 2012L_MINE109

Peak	Size [bp]	Conc. [pg/μl]	Molarity [pmol/l]	Observations
1	35	125.00	5,411.3	Lower Marker
2	242	7.48	46.8	
3	10,380	75.00	10.9	Upper Marker
4	20,335	0.00	0.0	

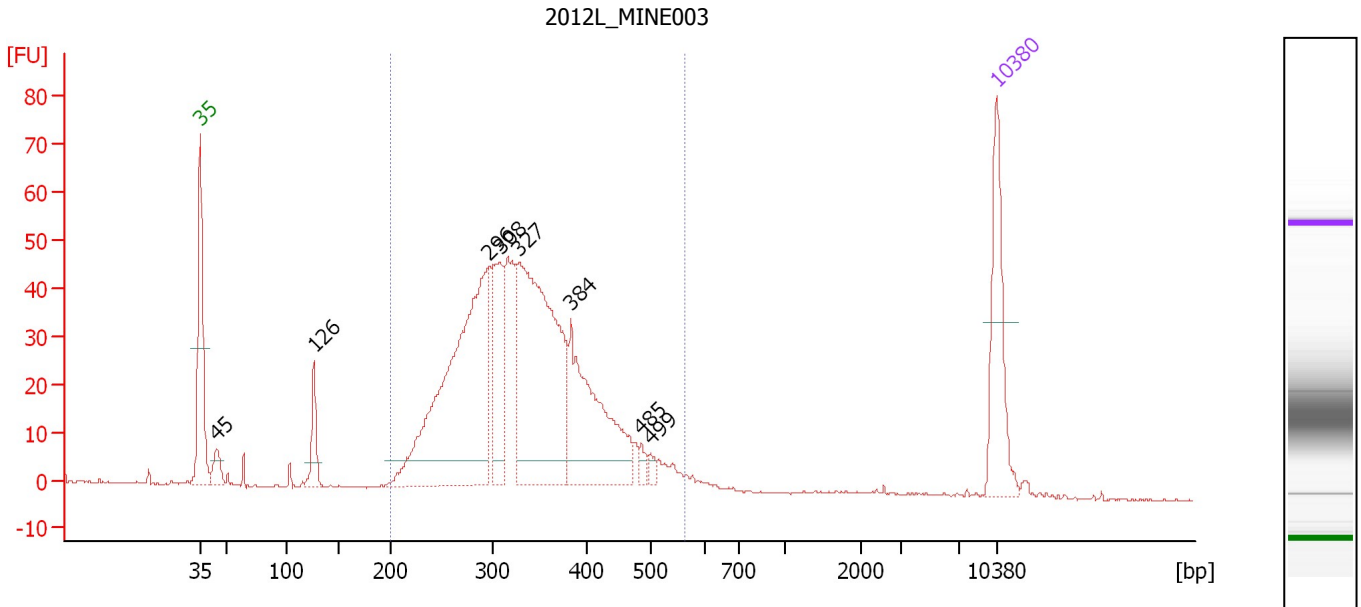
Region table for sample 7 : 2012L_MINE109

From [bp]	To [bp]	Average Size [bp]	Molarity [pmol/l]	Conc. [pg/μl]	Corr. Area	% of Total	Size distribution in CV [%]	Color
101	1,000	365	4,931.1	840.30	425.4	89	47.1	Blue

Assay Class: High Sensitivity DNA Assay
 Data Path: C:\...ents and Settings\Bioanalyzer\2012-08-15\2012-08-15_003.xad

Created: 8/15/2012 3:25:31 PM
 Modified: 8/15/2012 4:25:10 PM

Electropherogram Summary Continued ...



Overall Results for sample 8 : 2012L_MINE003

Number of peaks found: 8 Corr. Area 1: 886.4
 Noise: 0.2

Peak table for sample 8 : 2012L_MINE003

Peak	Size [bp]	Conc. [pg/μl]	Molarity [pmol/l]	Observations
1	35	125.00	5,411.3	Lower Marker
2	45	24.86	844.1	
3	126	41.78	502.3	
4	296	405.60	2,076.5	
5	308	100.90	496.0	
6	327	358.14	1,658.7	
7	384	182.63	720.6	
8	485	9.37	29.3	
9	499	6.65	20.2	
10	10,380	75.00	10.9	Upper Marker

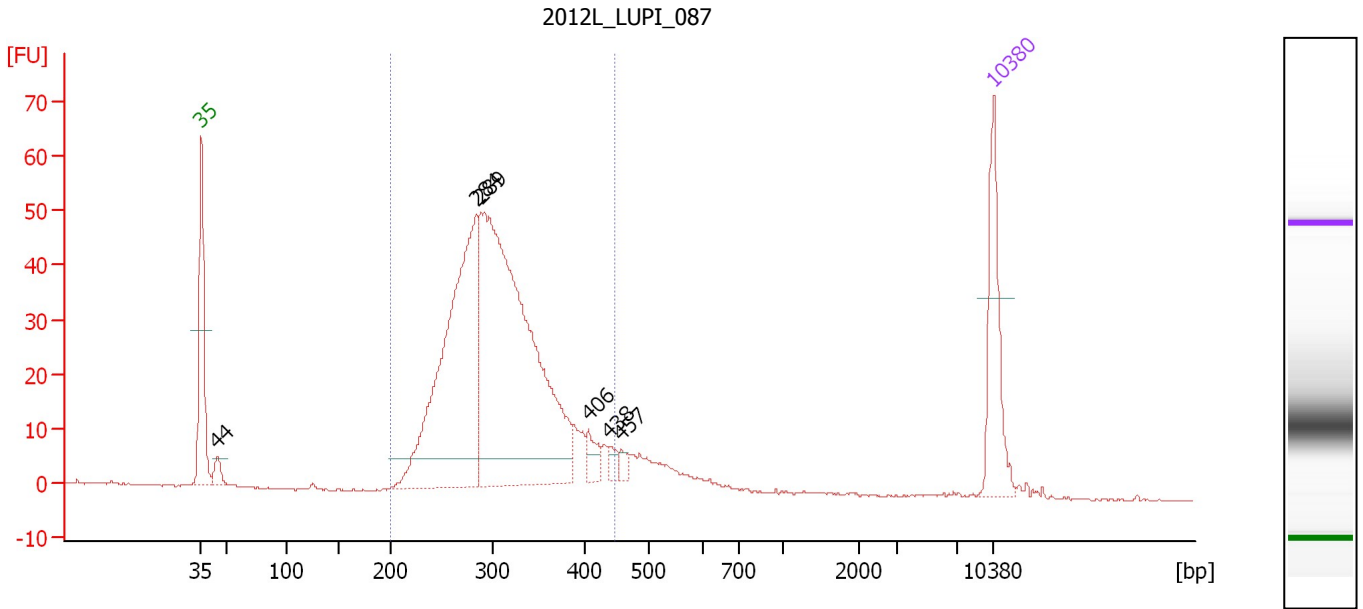
Region table for sample 8 : 2012L_MINE003

From [bp]	To [bp]	Average Size [bp]	Molarity [pmol/l]	Conc. [pg/μl]	Corr. Area	% of Total	Size distribution in CV [%]	Color
200	564	337	5,993.3	1,264.09	886.4	92	20.2	Blue

Assay Class: High Sensitivity DNA Assay
 Data Path: C:\...ents and Settings\Bioanalyzer\2012-08-15\2012-08-15_003.xad

Created: 8/15/2012 3:25:31 PM
 Modified: 8/15/2012 4:25:10 PM

Electropherogram Summary Continued ...



Overall Results for sample 9 : 2012L_LUPI_087

Number of peaks found: 6 Corr. Area 1: 687.5
 Noise: 0.2

Peak table for sample 9 : 2012L_LUPI_087

Peak	Size [bp]	Conc. [pg/μl]	Molarity [pmol/l]	Observations
1	35	125.00	5,411.3	Lower Marker
2	44	19.05	650.6	
3	284	436.86	2,327.8	
4	289	659.13	3,454.8	
5	406	20.87	77.9	
6	438	9.85	34.1	
7	457	8.63	28.6	
8	10,380	75.00	10.9	Upper Marker

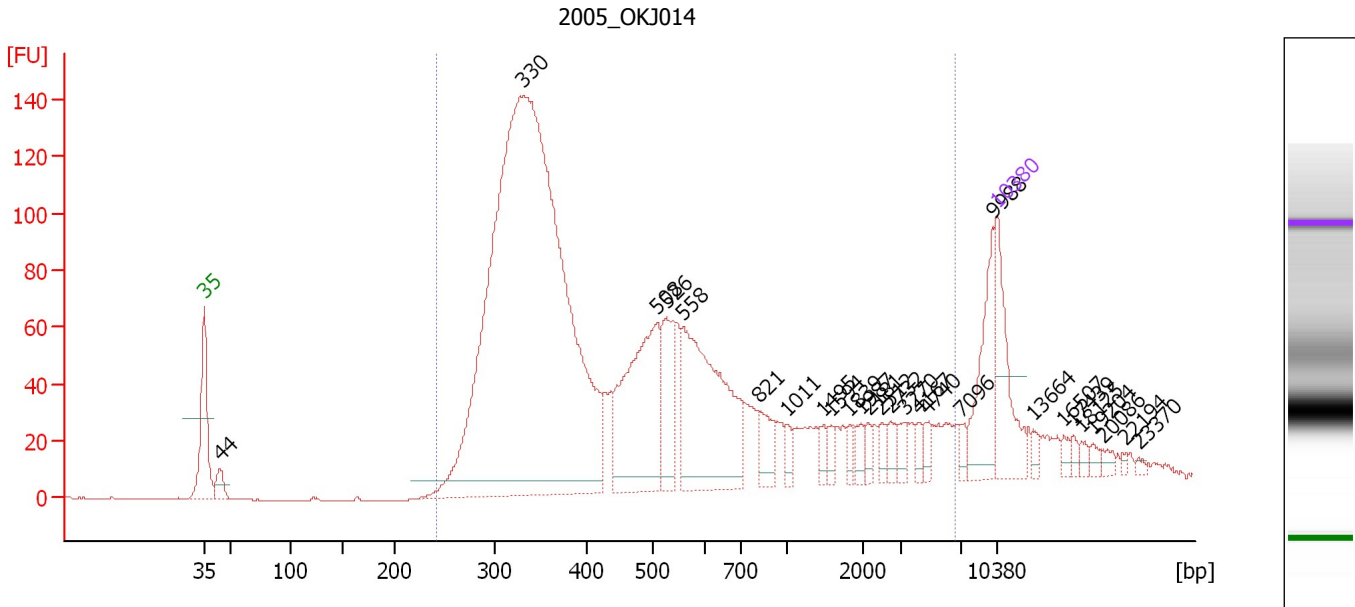
Region table for sample 9 : 2012L_LUPI_087

From [bp]	To [bp]	Average Size [bp]	Molarity [pmol/l]	Conc. [pg/μl]	Corr. Area	% of Total	Size distribution in CV [%]	Color
200	447	309	5,967.6	1,181.07	687.5	90	15.5	Blue

Assay Class: High Sensitivity DNA Assay
 Data Path: C:\...ents and Settings\Bioanalyzer\2012-08-15\2012-08-15_003.xad

Created: 8/15/2012 3:25:31 PM
 Modified: 8/15/2012 4:25:10 PM

Electropherogram Summary Continued ...



Overall Results for sample 10 : 2005_OKJ014

Number of peaks found: 27 Corr. Area 1: 2,528.8
 Noise: 0.2

Peak table for sample 10 : 2005_OKJ014

Peak	Size [bp]	Conc. [pg/μl]	Molarity [pmol/l]	Observations
1	35	125.00	5,411.3	Lower Marker
2	44	28.23	964.3	
3	330	1,645.64	7,544.6	
4	508	237.51	708.3	
5	526	81.68	235.2	
6	558	262.59	713.5	
7	821	35.93	66.3	
8	1,011	15.04	22.5	
9	1,495	12.48	12.6	
10	1,594	10.03	9.5	
11	1,839	9.57	7.9	
12	1,987	13.60	10.4	
13	2,181	9.96	6.9	
14	2,512	10.66	6.4	
15	2,732	14.18	7.9	
16	3,270	13.26	6.1	
17	4,167	8.90	3.2	
18	4,740	12.35	3.9	
19	7,096	8.96	1.9	
20	9,988	77.53	11.8	
21	10,380	75.00	10.9	Upper Marker
22	13,664	0.00	0.0	
23	16,507	0.00	0.0	
24	17,439	0.00	0.0	
25	18,125	0.00	0.0	
26	19,204	0.00	0.0	


Assay Class: High Sensitivity DNA Assay
Data Path: C:\...ents and Settings\Bioanalyzer\2012-08-15\2012-08-15_003.xad

Created: 8/15/2012 3:25:31 PM
Modified: 8/15/2012 4:25:10 PM

Electropherogram Summary Continued ...**... Peak table for sample 10 : 2005_OKJ014**

Peak	Size [bp]	Conc. [pg/μl]	Molarity [pmol/l]	Observations
27	20,086	0.00	0.0	
28	22,194	0.00	0.0	
29	23,370	0.00	0.0	

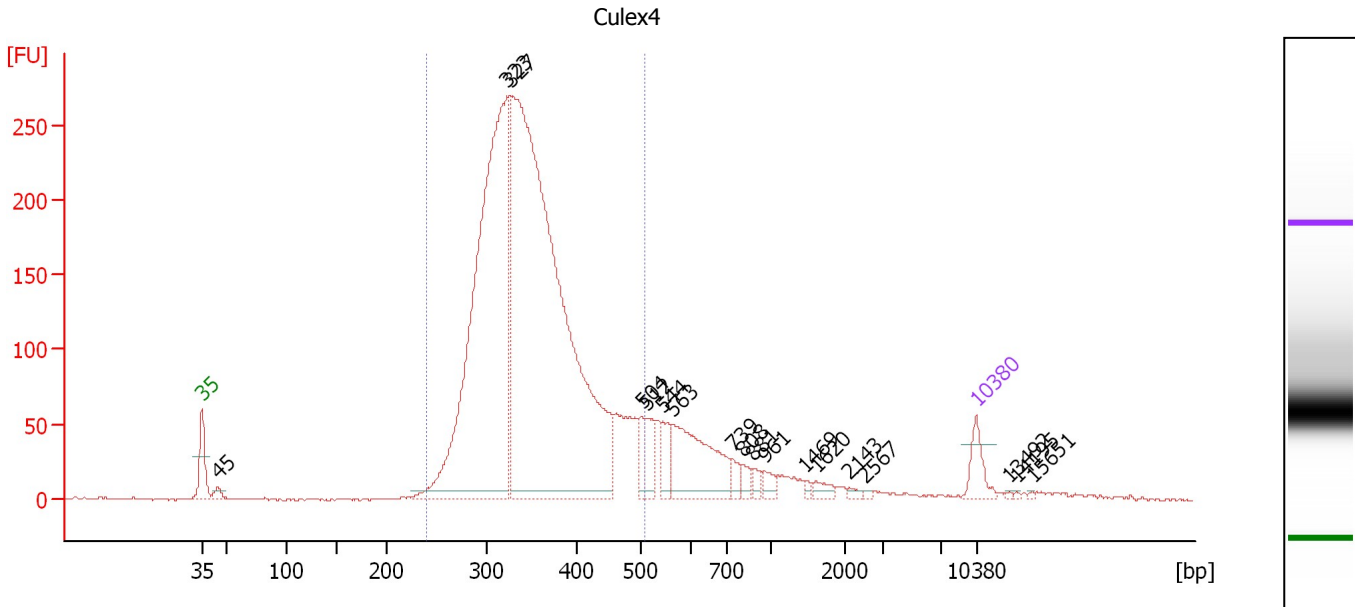
Region table for sample 10 : 2005_OKJ014

From [bp]	To [bp]	Average Size [bp]	Molarity [pmol/l]	Conc. [pg/μl]	Corr. Area	% of Total	Size distribution in CV [%]	Color
243	6,649	787	9,342.7	2,538.66	2,528.8	91	100.0	

Assay Class: High Sensitivity DNA Assay
 Data Path: C:\...ents and Settings\Bioanalyzer\2012-08-15\2012-08-15_003.xad

Created: 8/15/2012 3:25:31 PM
 Modified: 8/15/2012 4:25:10 PM

Electropherogram Summary Continued ...



Overall Results for sample 11 : Culex4

Number of peaks found: 18 Corr. Area 1: 3,419.8
 Noise: 0.7

Peak table for sample 11 : Culex4

Peak	Size [bp]	Conc. [pg/μl]	Molarity [pmol/l]	Observations
1	35	125.00	5,411.3	Lower Marker
2	45	35.48	1,205.7	
3	323	2,589.36	12,151.5	
4	327	3,838.51	17,785.7	
5	504	72.93	219.3	
6	512	97.74	289.1	
7	544	83.90	233.6	
8	563	404.23	1,088.0	
9	739	43.87	90.0	
10	808	35.58	66.7	
11	881	28.62	49.2	
12	961	35.89	56.6	
13	1,469	10.74	11.1	
14	1,620	28.61	26.8	
15	2,143	12.70	9.0	
16	2,567	5.91	3.5	
17	10,380	75.00	10.9	Upper Marker
18	13,492	0.00	0.0	
19	14,195	0.00	0.0	
20	15,651	0.00	0.0	

Region table for sample 11 : Culex4

From [bp]	To [bp]	Average Size [bp]	Molarity [pmol/l]	Conc. [pg/μl]	Corr. Area	% of Total	Size distribution in CV [%]	Color
241	508	350	29,209.5	6,562.08	3,419.8	84	15.3	Blue

Assay Class: High Sensitivity DNA Assay
Data Path: C:\...ents and Settings\Bioanalyzer\2012-08-15\2012-08-15_003.xad

Created: 8/15/2012 3:25:31 PM
Modified: 8/15/2012 4:25:10 PM

Gel Image

