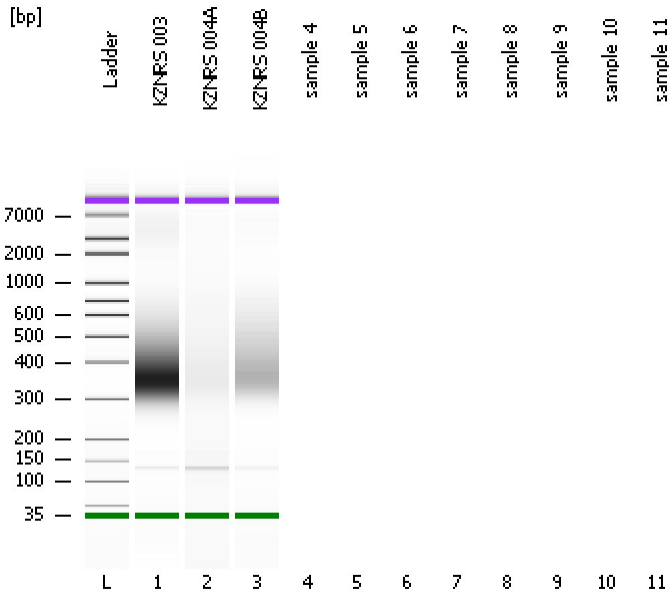


Assay Class: High Sensitivity DNA Assay
Data Path: C:\...ents and Settings\Bioanalyzer\2012-08-15\2012-08-15_001.xad

Created: 8/15/2012 1:13:50 PM
Modified: 8/15/2012 1:37:30 PM

Electrophoresis File Run Summary



Instrument Information:

Instrument Name: DE13701086 Firmware: C.01.069
Serial#: DE13701086 Type: G2938B

Assay Information:

Assay Origin Path: C:\Program Files\Agilent\2100 bioanalyzer\2100 expert\assays\dsDNA\High Sensitivity DNA.xsy
Assay Class: High Sensitivity DNA Assay
Version: 1.03
Assay Comments: Copyright © 2003-2010 Agilent Technologies

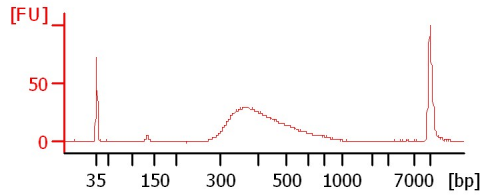
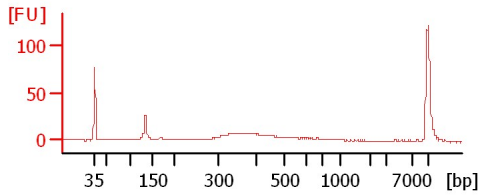
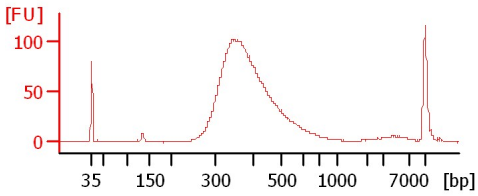
Chip Information:

Chip Lot #:
Reagent Kit Lot #:
Chip Comments:

KZNRS 003

KZNRS 004A

KZNRS 004B



Assay Class: High Sensitivity DNA Assay
 Data Path: C:\...ents and Settings\Bioanalyzer\2012-08-15\2012-08-15_001.xad

Created: 8/15/2012 1:13:50 PM
 Modified: 8/15/2012 1:37:30 PM

Electrophoresis File Run Summary (Chip Summary)

Sample Name	Sample Comment	Rest. Digest	Status	Observation	Result Label	Result Color
KZNRS 003		<input type="checkbox"/>	✓			
KZNRS 004A		<input type="checkbox"/>	✓			
KZNRS 004B		<input type="checkbox"/>	✓			
sample 4		<input type="checkbox"/>				
sample 5		<input type="checkbox"/>				
sample 6		<input type="checkbox"/>				
sample 7		<input type="checkbox"/>				
sample 8		<input type="checkbox"/>				
sample 9		<input type="checkbox"/>				
sample 10		<input type="checkbox"/>				
sample 11		<input type="checkbox"/>				
Ladder		<input type="checkbox"/>	✓			

Chip Lot #

Reagent Kit Lot #

Chip Comments :

Assay Class: High Sensitivity DNA Assay
Data Path: C:\...ents and Settings\Bioanalyzer\2012-08-15\2012-08-15_001.xad

Created: 8/15/2012 1:13:50 PM
Modified: 8/15/2012 1:37:30 PM

Electrophoresis Assay Details

General Analysis Settings

Number of Available Sample and Ladder Wells (Max.) : 12
Minimum Visible Range [s] : 32
Maximum Visible Range [s] : 138
Start Analysis Time Range [s] : 33
End Analysis Time Range [s] : 137.5
Ladder Concentration [pg/μl] : 1950
Uses Standard Area for Ladder Fragments
Lower Marker Concentration [pg/μl] : 125
Upper Marker Concentration [pg/μl] : 75
Used Upper Marker for Quantitation
Standard Curve Fit is Point to Point
Show Data Aligned to Lower and Upper Marker

Integrator Settings

Integration Start Time [s] : 33.05
Integration End Time [s] : 137
Slope Threshold : 0.8
Height Threshold [FU] : 5
Area Threshold : 0.1
Width Threshold [s] : 0.6
Baseline Plateau [s] : 0.5

Filter Settings

Filter Width [s] : 0.5
Polynomial Order : 4

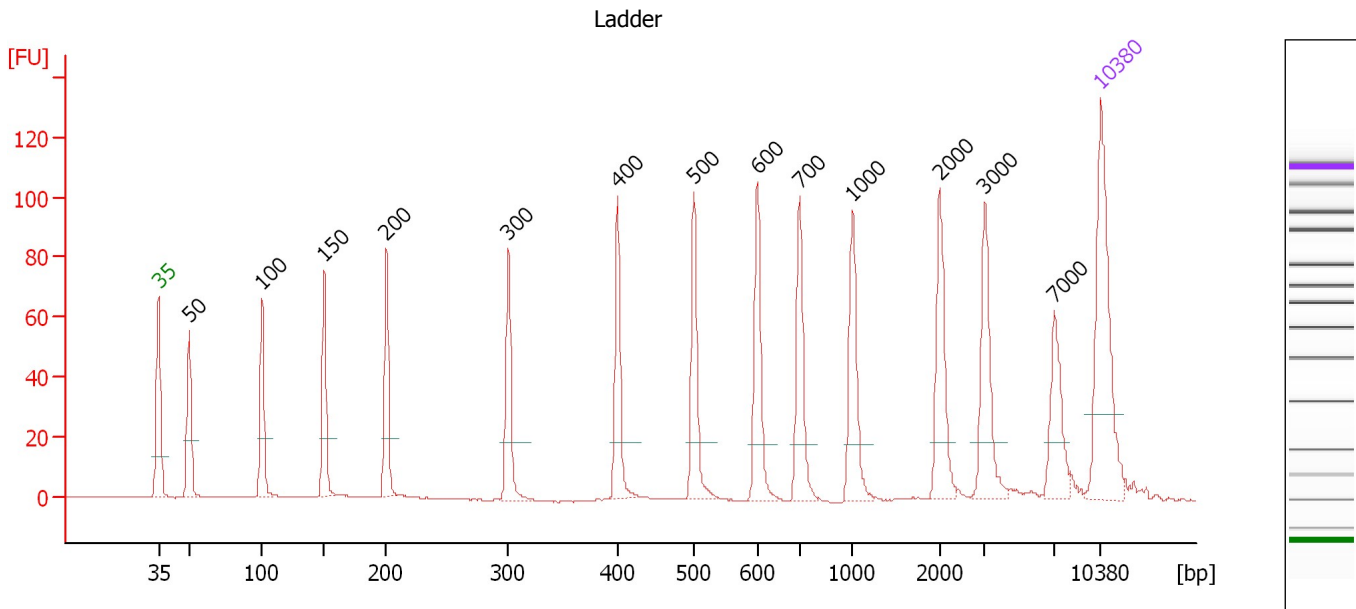
Ladder

Ladder Peak	Size	Area
1	35	160
2	50	210
3	100	208
4	150	221
5	200	242
6	300	270
7	400	305
8	500	306
9	600	336
10	700	321
11	1000	366
12	2000	413
13	3000	411
14	7000	400
15	10380	214

Assay Class: High Sensitivity DNA Assay
 Data Path: C:\...ents and Settings\Bioanalyzer\2012-08-15\2012-08-15_001.xad

Created: 8/15/2012 1:13:50 PM
 Modified: 8/15/2012 1:37:30 PM

Electropherogram Summary



Overall Results for Ladder

Noise: 0.1

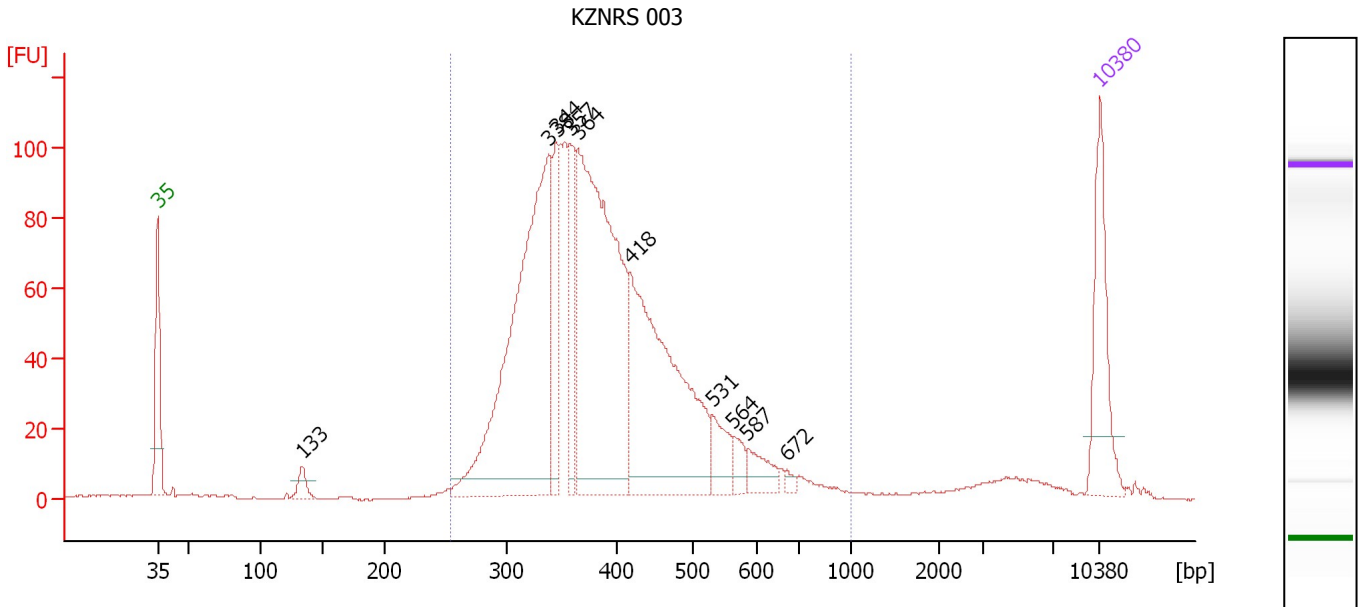
Peak table for Ladder

Peak	Size [bp]	Conc. [pg/μl]	Molarity [pmol/l]	Observations
1	35	125.00	5,411.3	Lower Marker
2	50	150.00	4,545.5	Ladder Peak
3	100	150.00	2,272.7	Ladder Peak
4	150	150.00	1,515.2	Ladder Peak
5	200	150.00	1,136.4	Ladder Peak
6	300	150.00	757.6	Ladder Peak
7	400	150.00	568.2	Ladder Peak
8	500	150.00	454.5	Ladder Peak
9	600	150.00	378.8	Ladder Peak
10	700	150.00	324.7	Ladder Peak
11	1,000	150.00	227.3	Ladder Peak
12	2,000	150.00	113.6	Ladder Peak
13	3,000	150.00	75.8	Ladder Peak
14	7,000	150.00	32.5	Ladder Peak
15	10,380	75.00	10.9	Upper Marker

Assay Class: High Sensitivity DNA Assay
 Data Path: C:\...ents and Settings\Bioanalyzer\2012-08-15\2012-08-15_001.xad

Created: 8/15/2012 1:13:50 PM
 Modified: 8/15/2012 1:37:30 PM

Electropherogram Summary Continued ...



Overall Results for sample 1 : KZNR5 003

Number of peaks found: 10 Corr. Area 1: 1,658.0
 Noise: 0.2

Peak table for sample 1 : KZNR5 003

Peak	Size [bp]	Conc. [pg/μl]	Molarity [pmol/l]	Observations
1	35	125.00	5,411.3	Lower Marker
2	133	17.98	205.1	
3	338	481.56	2,160.8	
4	344	90.54	398.2	
5	357	81.94	347.7	
6	364	465.19	1,934.0	
7	418	331.22	1,200.1	
8	531	36.97	105.6	
9	564	17.93	48.2	
10	587	25.10	64.8	
11	672	4.88	11.0	
12	10,380	75.00	10.9	Upper Marker

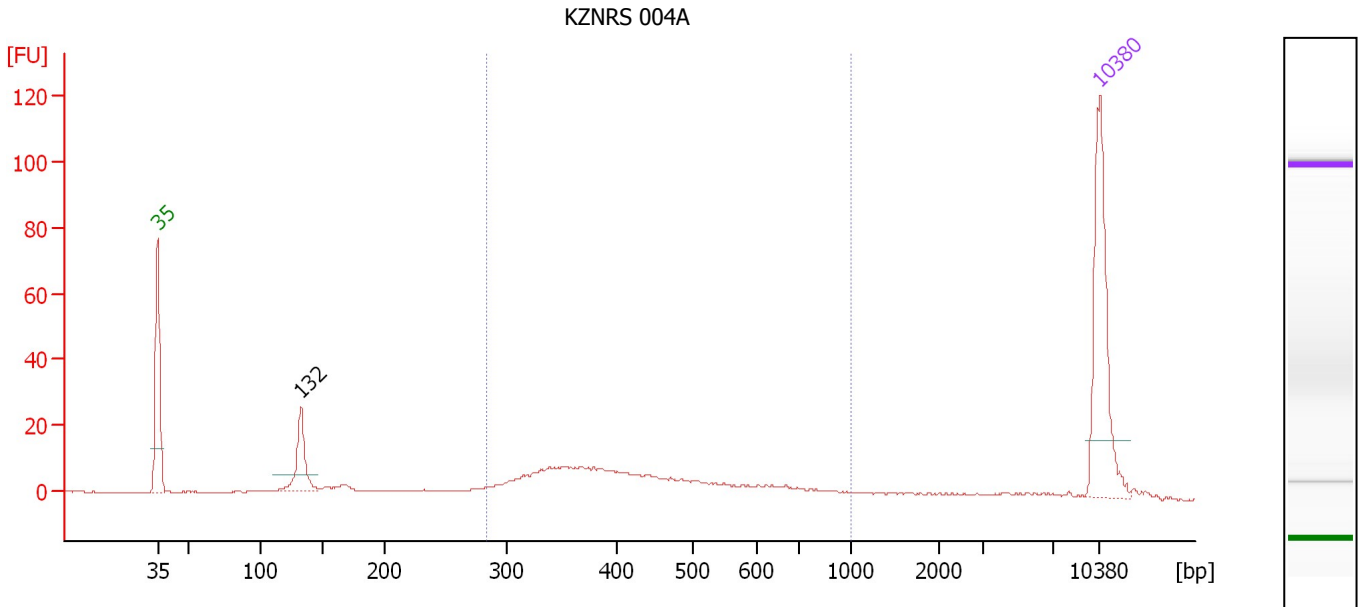
Region table for sample 1 : KZNR5 003

From [bp]	To [bp]	Average Size [bp]	Molarity [pmol/l]	Conc. [pg/μl]	Corr. Area	% of Total	Size distribution in CV [%]	Color
254	1,000	399	6,843.8	1,700.53	1,658.0	93	23.6	Blue

Assay Class: High Sensitivity DNA Assay
 Data Path: C:\...ents and Settings\Bioanalyzer\2012-08-15\2012-08-15_001.xad

Created: 8/15/2012 1:13:50 PM
 Modified: 8/15/2012 1:37:30 PM

Electropherogram Summary Continued ...



Overall Results for sample 2 : KZNRS 004A

Number of peaks found: 1 Corr. Area 1: 175.9
 Noise: 0.2

Peak table for sample 2 : KZNRS 004A

Peak	Size [bp]	Conc. [pg/μl]	Molarity [pmol/l]	Observations
1	35	125.00	5,411.3	Lower Marker
2	132	44.53	510.7	
3	10,380	75.00	10.9	Upper Marker

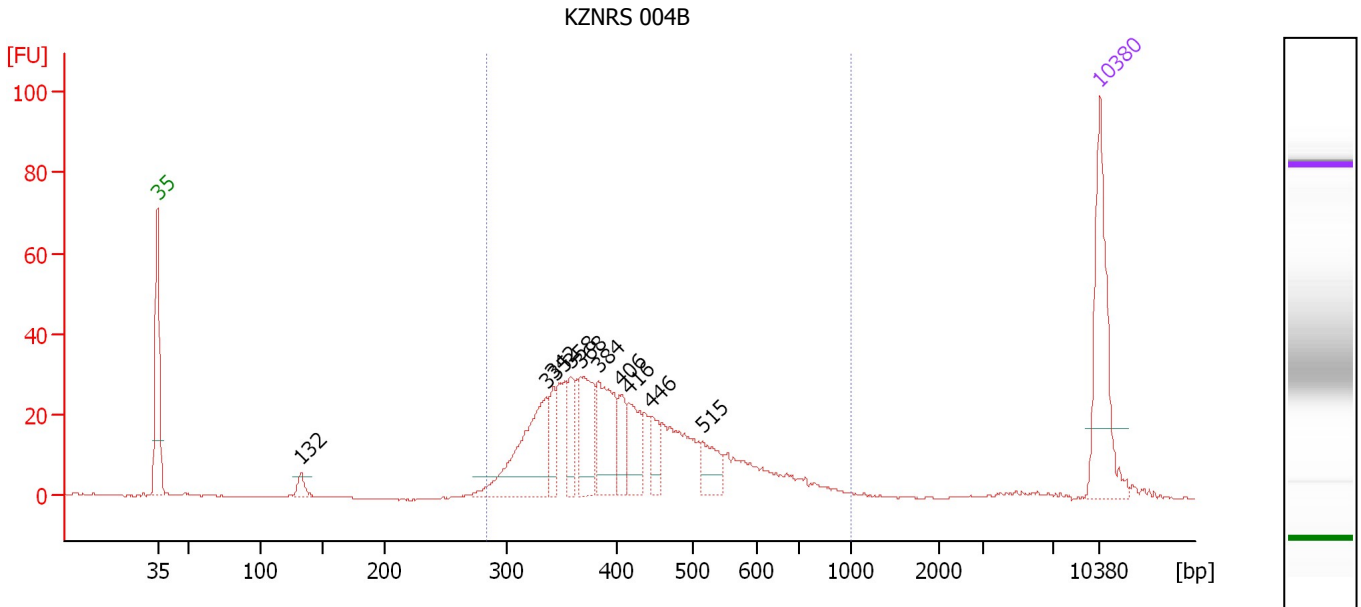
Region table for sample 2 : KZNRS 004A

From [bp]	To [bp]	Average Size [bp]	Molarity [pmol/l]	Conc. [pg/μl]	Corr. Area	% of Total	Size distribution in CV [%]	Color
283	1,000	450	591.6	158.96	175.9	64	30.8	Blue

Assay Class: High Sensitivity DNA Assay
 Data Path: C:\...ents and Settings\Bioanalyzer\2012-08-15\2012-08-15_001.xad

Created: 8/15/2012 1:13:50 PM
 Modified: 8/15/2012 1:37:30 PM

Electropherogram Summary Continued ...



Overall Results for sample 3 : KZNRS 004B

Number of peaks found: 10 Corr. Area 1: 535.1
 Noise: 0.2

Peak table for sample 3 : KZNRS 004B

Peak	Size [bp]	Conc. [pg/μl]	Molarity [pmol/l]	Observations
1	35	125.00	5,411.3	Lower Marker
2	132	11.10	127.3	
3	335	108.62	491.2	
4	342	26.08	115.5	
5	358	30.16	127.7	
6	368	62.55	257.7	
7	384	66.21	261.5	
8	406	25.95	96.8	
9	416	37.51	136.5	
10	446	19.37	65.8	
11	515	26.81	78.9	
12	10,380	75.00	10.9	Upper Marker

Region table for sample 3 : KZNRS 004B

From [bp]	To [bp]	Average Size [bp]	Molarity [pmol/l]	Conc. [pg/μl]	Corr. Area	% of Total	Size distribution in CV [%]	Color
282	1,000	432	2,311.2	614.38	535.1	93	25.9	Blue

Assay Class: High Sensitivity DNA Assay
Data Path: C:\...ents and Settings\Bioanalyzer\2012-08-15\2012-08-15_001.xad

Created: 8/15/2012 1:13:50 PM
Modified: 8/15/2012 1:37:30 PM

Gel Image

