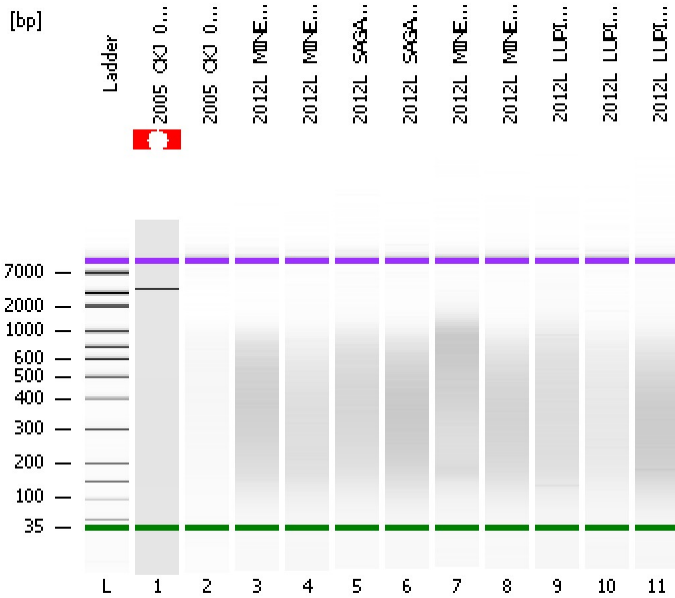


Assay Class: High Sensitivity DNA Assay  
Data Path: C:\...ents and Settings\Bioanalyzer\2012-08-16\2012-08-16\_001.xad

Created: 8/16/2012 10:26:42 AM  
Modified: 8/16/2012 12:04:23 PM

**Electrophoresis File Run Summary**



Instrument Information:

Instrument Name: DE13701086      Firmware: C.01.069  
Serial#: DE13701086      Type: G2938B

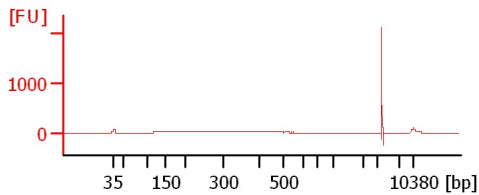
Assay Information:

Assay Origin Path: C:\Program Files\Agilent\2100 bioanalyzer\2100 expert\assays\dsDNA\High Sensitivity DNA.xsy  
Assay Class: High Sensitivity DNA Assay  
Version: 1.03  
Assay Comments: Copyright © 2003-2010 Agilent Technologies

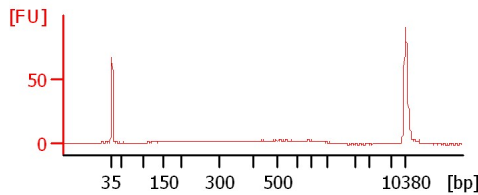
Chip Information:

Chip Lot #:   
Reagent Kit Lot #:   
Chip Comments:

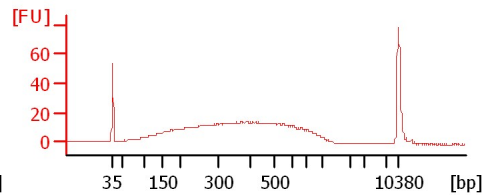
2005\_OKJ\_035\_8x15s90s



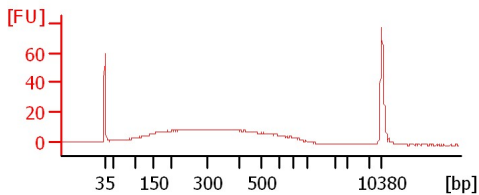
2005\_OKJ\_036\_8x15s90s



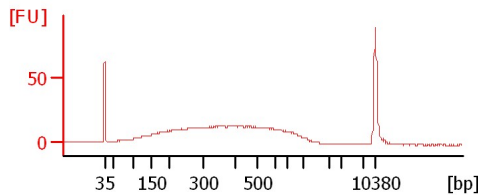
2012L\_MINE\_099\_8x15s90s



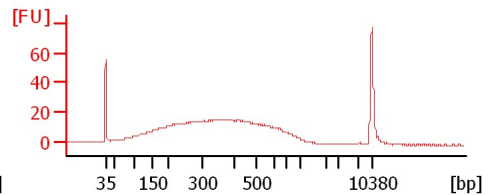
2012L\_MINE\_111\_8x15s90s



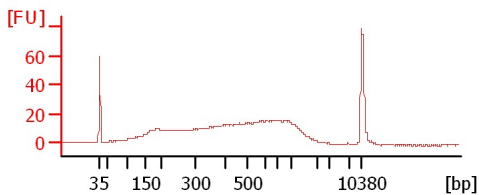
2012L\_SAGA\_135\_8x15s90s



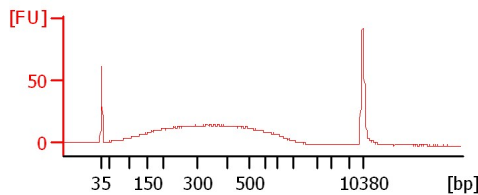
2012L\_SAGA\_142\_8x15s90s



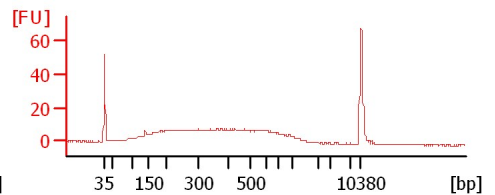
2012L\_MINE\_098\_8x15s90



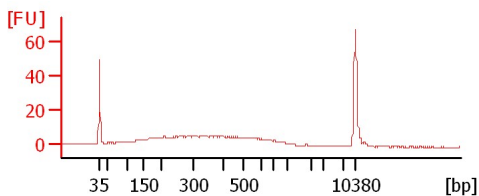
2012L\_MINE\_100\_8x15s90



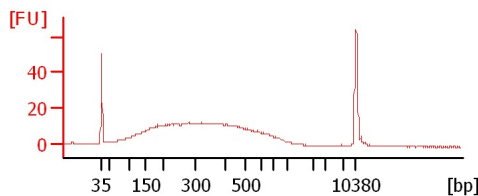
2012L\_LUPI\_001\_8x15s90



2012L\_LUPI\_056\_8x15s90



2012L\_LUPI\_007\_8x15s90



Assay Class: High Sensitivity DNA Assay  
 Data Path: C:\...ents and Settings\Bioanalyzer\2012-08-16\2012-08-16\_001.xad

Created: 8/16/2012 10:26:42 AM  
 Modified: 8/16/2012 12:04:23 PM

**Electrophoresis File Run Summary (Chip Summary)**

Sample Name	Sample Comment	Rest. Digest	Status	Observation	Result Label	Result Color
2005_OKJ_035_8x15s90s		<input type="checkbox"/>				
2005_OKJ_036_8x15s90s		<input type="checkbox"/>				
2012L_MINE_099_8x15s90s		<input type="checkbox"/>				
2012L_MINE_111_8x15s90s		<input type="checkbox"/>				
2012L_SAGA_135_8x15s90s		<input type="checkbox"/>				
2012L_SAGA_142_8x15s90s		<input type="checkbox"/>				
2012L_MINE_098_8x15s90		<input type="checkbox"/>				
2012L_MINE_100_8x15s90		<input type="checkbox"/>				
2012L_LUPI_001_8x15s90		<input type="checkbox"/>				
2012L_LUPI_056_8x15s90		<input type="checkbox"/>				
2012L_LUPI_007_8x15s90		<input type="checkbox"/>				
Ladder		<input type="checkbox"/>				

**Chip Lot #**

**Reagent Kit Lot #**

**Chip Comments :**

Assay Class: High Sensitivity DNA Assay  
Data Path: C:\...ents and Settings\Bioanalyzer\2012-08-16\2012-08-16\_001.xad

Created: 8/16/2012 10:26:42 AM  
Modified: 8/16/2012 12:04:23 PM

**Electrophoresis Assay Details**

**General Analysis Settings**

Number of Available Sample and Ladder Wells (Max.) : 12  
Minimum Visible Range [s] : 32  
Maximum Visible Range [s] : 138  
Start Analysis Time Range [s] : 33  
End Analysis Time Range [s] : 137.5  
Ladder Concentration [pg/μl] : 1950  
Uses Standard Area for Ladder Fragments  
Lower Marker Concentration [pg/μl] : 125  
Upper Marker Concentration [pg/μl] : 75  
Used Upper Marker for Quantitation  
Standard Curve Fit is Point to Point  
Show Data Aligned to Lower and Upper Marker

**Integrator Settings**

Integration Start Time [s] : 33.05  
Integration End Time [s] : 137  
Slope Threshold : 0.8  
Height Threshold [FU] : 5  
Area Threshold : 0.1  
Width Threshold [s] : 0.6  
Baseline Plateau [s] : 0.5

**Filter Settings**

Filter Width [s] : 0.5  
Polynomial Order : 4

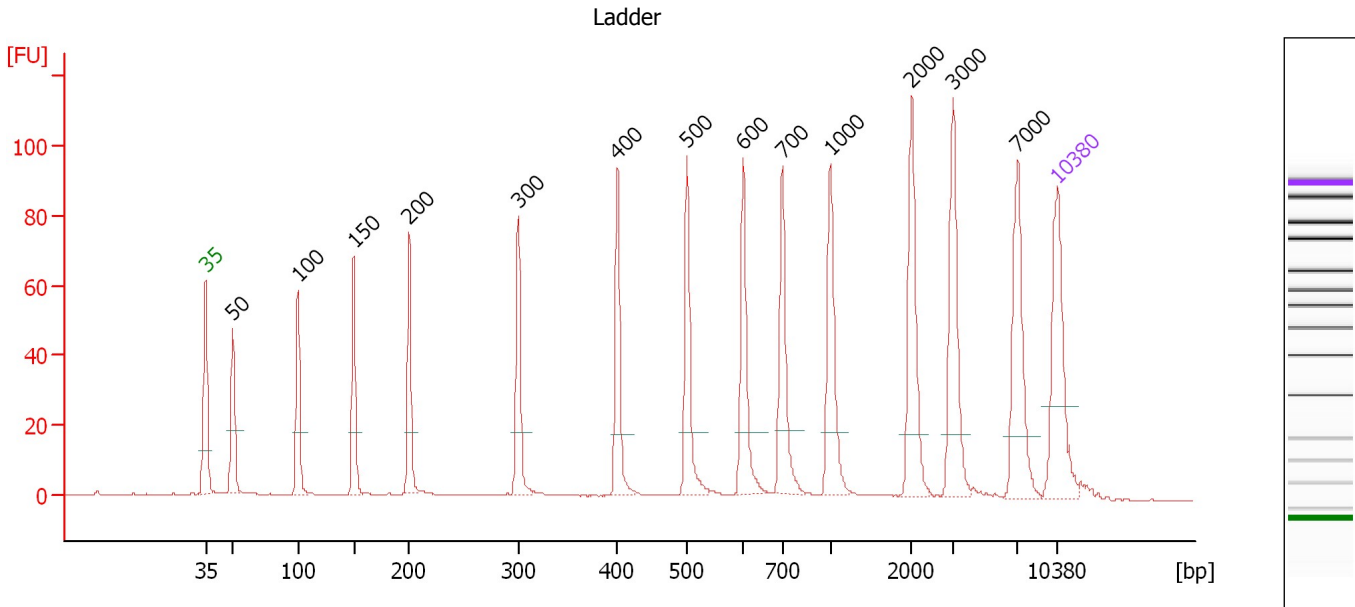
**Ladder**

Ladder Peak	Size	Area
1	35	160
2	50	210
3	100	208
4	150	221
5	200	242
6	300	270
7	400	305
8	500	306
9	600	336
10	700	321
11	1000	366
12	2000	413
13	3000	411
14	7000	400
15	10380	214

Assay Class: High Sensitivity DNA Assay  
 Data Path: C:\...ents and Settings\Bioanalyzer\2012-08-16\2012-08-16\_001.xad

Created: 8/16/2012 10:26:42 AM  
 Modified: 8/16/2012 12:04:23 PM

**Electropherogram Summary**



**Overall Results for Ladder**

Noise: 0.1

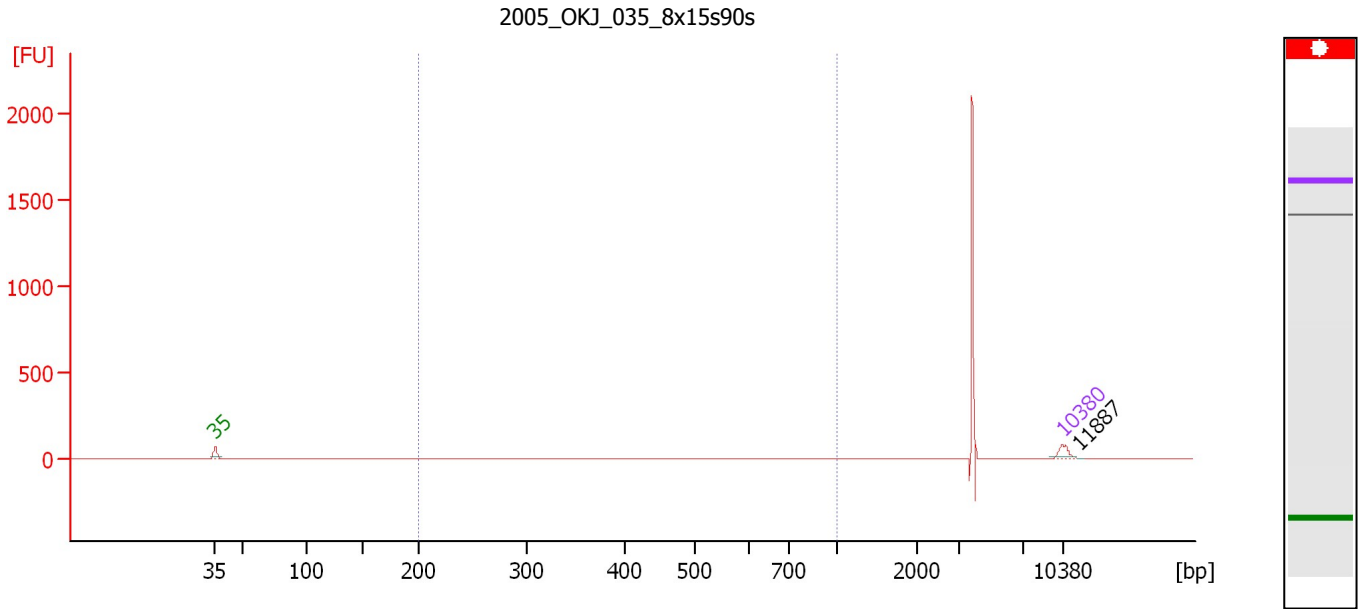
**Peak table for Ladder**

Peak	Size [bp]	Conc. [pg/μl]	Molarity [pmol/l]	Observations
1	35	125.00	5,411.3	Lower Marker
2	50	150.00	4,545.5	Ladder Peak
3	100	150.00	2,272.7	Ladder Peak
4	150	150.00	1,515.2	Ladder Peak
5	200	150.00	1,136.4	Ladder Peak
6	300	150.00	757.6	Ladder Peak
7	400	150.00	568.2	Ladder Peak
8	500	150.00	454.5	Ladder Peak
9	600	150.00	378.8	Ladder Peak
10	700	150.00	324.7	Ladder Peak
11	1,000	150.00	227.3	Ladder Peak
12	2,000	150.00	113.6	Ladder Peak
13	3,000	150.00	75.8	Ladder Peak
14	7,000	150.00	32.5	Ladder Peak
15	10,380	75.00	10.9	Upper Marker

Assay Class: High Sensitivity DNA Assay  
 Data Path: C:\...ents and Settings\Bioanalyzer\2012-08-16\2012-08-16\_001.xad

Created: 8/16/2012 10:26:42 AM  
 Modified: 8/16/2012 12:04:23 PM

**Electropherogram Summary Continued ...**



**Overall Results for sample 1 : 2005 OKJ 035 8x15s90s**

Number of peaks found: 1                      Corr. Area 1: 152.0  
 Noise: 0.1

**Peak table for sample 1 : 2005 OKJ 035 8x15s90s**

Peak	Size [bp]	Conc. [pg/μl]	Molarity [pmol/l]	Observations
1	35	125.00	5,411.3	Lower Marker
2	10,380	75.00	10.9	Upper Marker
3	11,887	0.00	0.0	

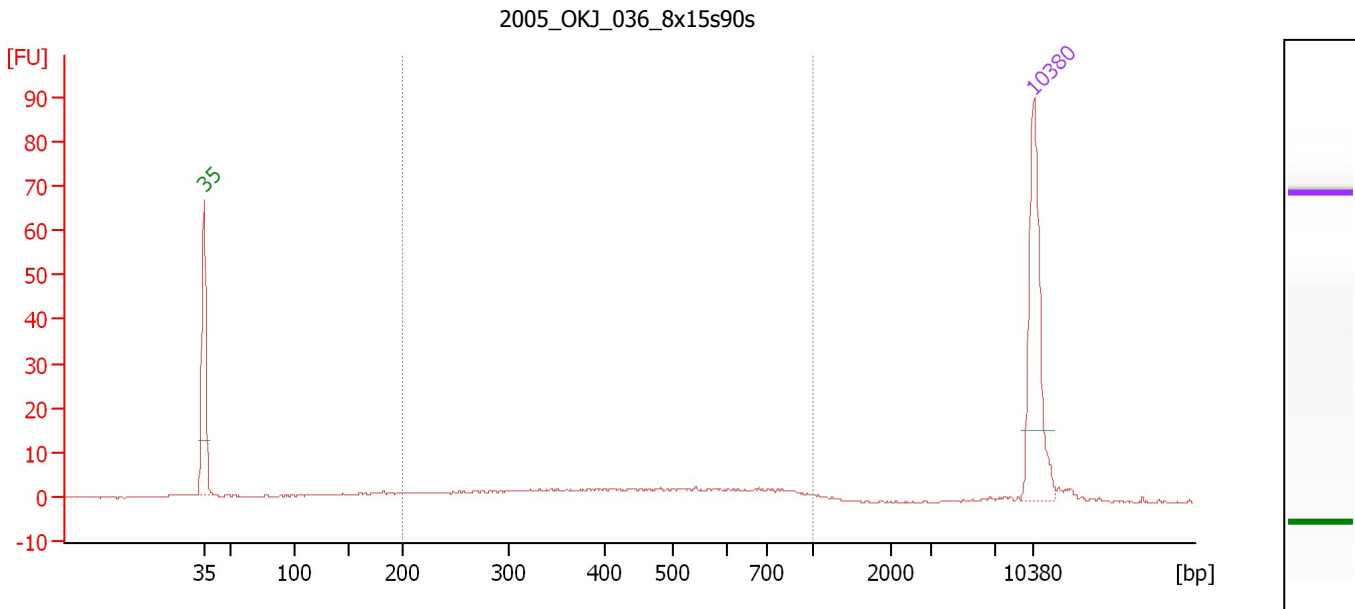
**Region table for sample 1 : 2005 OKJ 035 8x15s90s**

From [bp]	To [bp]	Average Size [bp]	Molarity [pmol/l]	Conc. [pg/μl]	Corr. Area	% of Total	Size distribution in CV [%]	Color
200	1,000	376	1,122.4	238.29	152.0	26	35.2	Blue

Assay Class: High Sensitivity DNA Assay  
 Data Path: C:\...ents and Settings\Bioanalyzer\2012-08-16\2012-08-16\_001.xad

Created: 8/16/2012 10:26:42 AM  
 Modified: 8/16/2012 12:04:23 PM

**Electropherogram Summary Continued ...**



**Overall Results for sample 2 : 2005 OKJ 036 8x15s90s**

Number of peaks found: 0                      Corr. Area 1: 92.6  
 Noise: 0.1

**Peak table for sample 2 : 2005 OKJ 036 8x15s90s**

Peak	Size [bp]	Conc. [pg/μl]	Molarity [pmol/l]	Observations
1	35	125.00	5,411.3	Lower Marker
2	10,380	75.00	10.9	Upper Marker

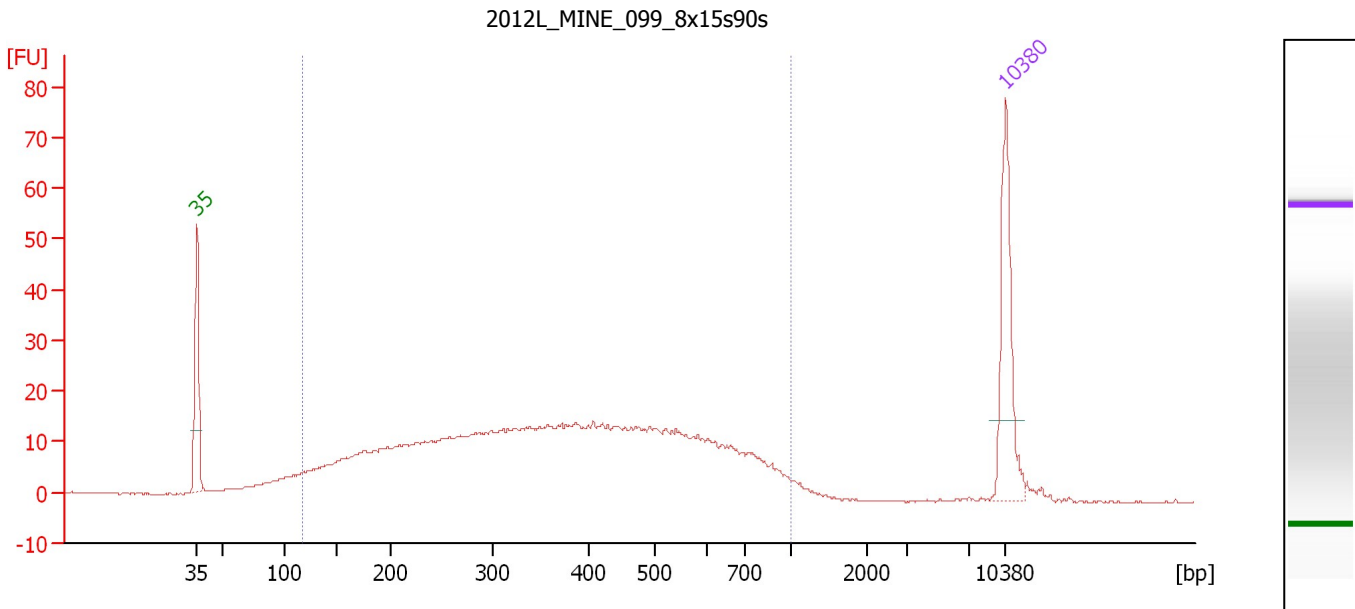
**Region table for sample 2 : 2005 OKJ 036 8x15s90s**

From [bp]	To [bp]	Average Size [bp]	Molarity [pmol/l]	Conc. [pg/μl]	Corr. Area	% of Total	Size distribution in CV [%]	Color
200	1,000	467	467.0	115.94	92.6	69	38.9	Blue

Assay Class: High Sensitivity DNA Assay  
 Data Path: C:\...ents and Settings\Bioanalyzer\2012-08-16\2012-08-16\_001.xad

Created: 8/16/2012 10:26:42 AM  
 Modified: 8/16/2012 12:04:23 PM

**Electropherogram Summary Continued ...**



**Overall Results for sample 3 : 2012L MINE 099 8x15s90s**

Number of peaks found: 0                      Corr. Area 1: 652.4  
 Noise: 0.2

**Peak table for sample 3 : 2012L MINE 099 8x15s90s**

Peak	Size [bp]	Conc. [pg/μl]	Molarity [pmol/l]	Observations
1	35	125.00	5,411.3	Lower Marker
2	10,380	75.00	10.9	Upper Marker

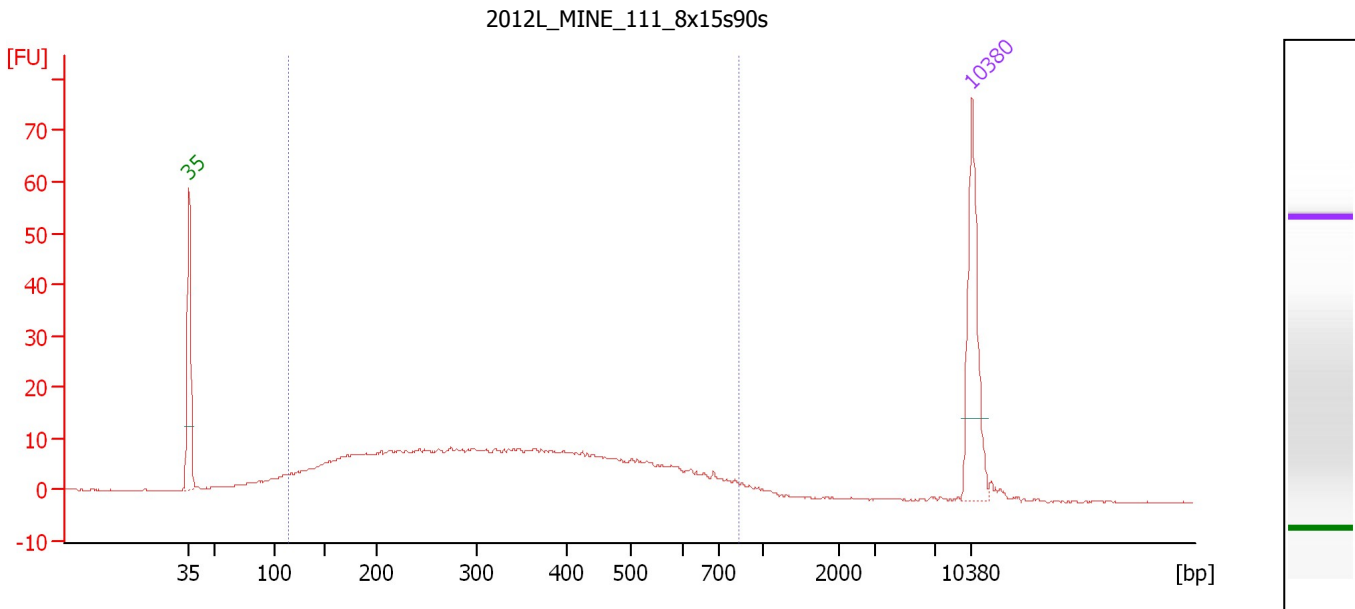
**Region table for sample 3 : 2012L MINE 099 8x15s90s**

From [bp]	To [bp]	Average Size [bp]	Molarity [pmol/l]	Conc. [pg/μl]	Corr. Area	% of Total	Size distribution in CV [%]	Color
118	1,000	398	5,535.8	1,054.89	652.4	93	44.3	Blue

Assay Class: High Sensitivity DNA Assay  
 Data Path: C:\...ents and Settings\Bioanalyzer\2012-08-16\2012-08-16\_001.xad

Created: 8/16/2012 10:26:42 AM  
 Modified: 8/16/2012 12:04:23 PM

**Electropherogram Summary Continued ...**



**Overall Results for sample 4 : 2012L MINE 111 8x15s90s**

Number of peaks found: 0                      Corr. Area 1: 414.5  
 Noise: 0.1

**Peak table for sample 4 : 2012L MINE 111 8x15s90s**

Peak	Size [bp]	Conc. [pg/μl]	Molarity [pmol/l]	Observations
1	35	125.00	5,411.3	Lower Marker
2	10,380	75.00	10.9	Upper Marker

**Region table for sample 4 : 2012L MINE 111 8x15s90s**

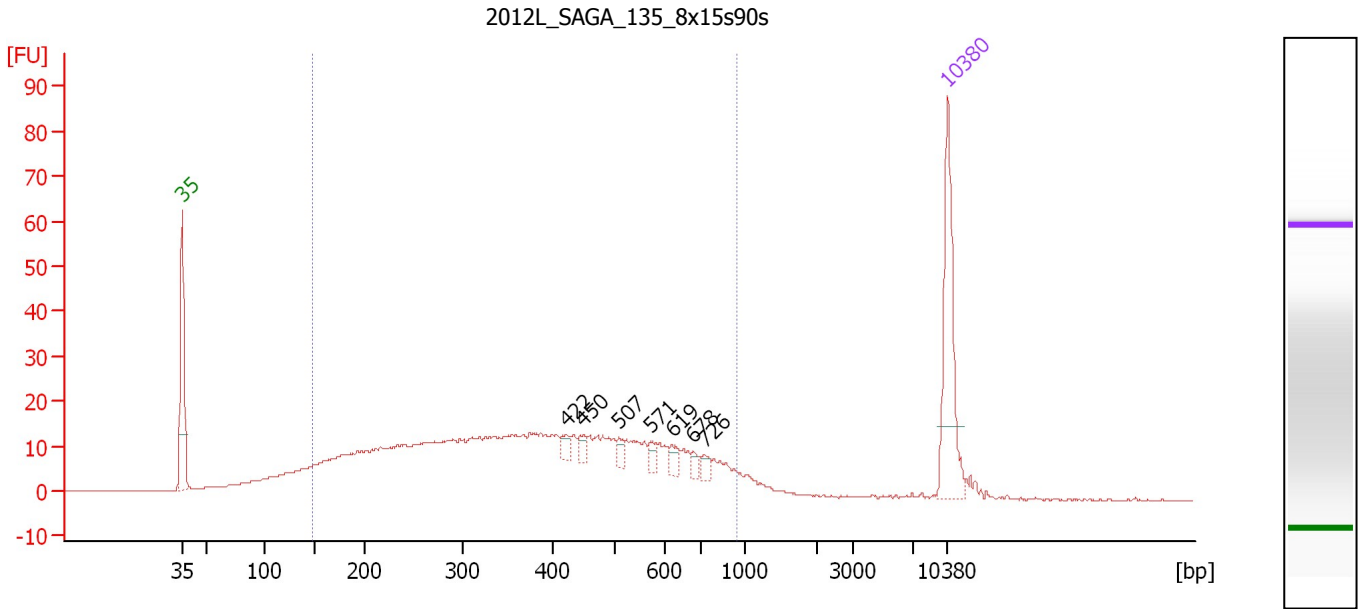
From [bp]	To [bp]	Average Size [bp]	Molarity [pmol/l]	Conc. [pg/μl]	Corr. Area	% of Total	Size distribution in CV [%]	Color
115	834	352	4,165.2	719.06	414.5	91	42.6	Blue



Assay Class: High Sensitivity DNA Assay  
 Data Path: C:\...ents and Settings\Bioanalyzer\2012-08-16\2012-08-16\_001.xad

Created: 8/16/2012 10:26:42 AM  
 Modified: 8/16/2012 12:04:23 PM

**Electropherogram Summary Continued ...**



**Overall Results for sample 5 : 2012L SAGA 135 8x15s90s**

Number of peaks found: 7                      Corr. Area 1: 592.4  
 Noise: 0.1

**Peak table for sample 5 : 2012L SAGA 135 8x15s90s**

Peak	Size [bp]	Conc. [pg/μl]	Molarity [pmol/l]	Observations
1	35	125.00	5,411.3	Lower Marker
2	422	8.88	31.9	
3	450	9.05	30.5	
4	507	7.79	23.3	
5	571	7.38	19.6	
6	619	9.08	22.2	
7	678	5.60	12.5	
8	726	6.82	14.2	
9	10,380	75.00	10.9	Upper Marker

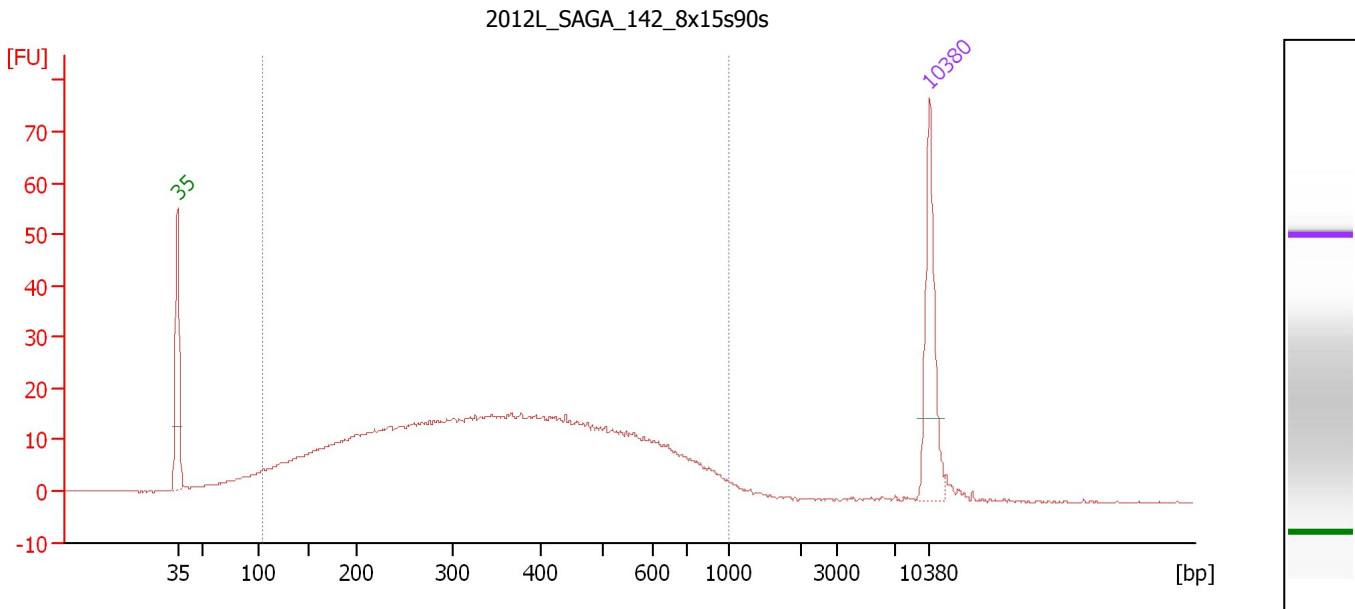
**Region table for sample 5 : 2012L SAGA 135 8x15s90s**

From [bp]	To [bp]	Average Size [bp]	Molarity [pmol/l]	Conc. [pg/μl]	Corr. Area	% of Total	Size distribution in CV [%]	Color
146	946	404	4,346.8	882.38	592.4	87	42.1	Blue

Assay Class: High Sensitivity DNA Assay  
 Data Path: C:\...ents and Settings\Bioanalyzer\2012-08-16\2012-08-16\_001.xad

Created: 8/16/2012 10:26:42 AM  
 Modified: 8/16/2012 12:04:23 PM

**Electropherogram Summary Continued ...**



**Overall Results for sample 6 : 2012L\_SAGA\_142\_8x15s90s**

Number of peaks found: 0                      Corr. Area 1: 713.4  
 Noise: 0.2

**Peak table for sample 6 : 2012L\_SAGA\_142\_8x15s90s**

Peak	Size [bp]	Conc. [pg/μl]	Molarity [pmol/l]	Observations
1	35	125.00	5,411.3	Lower Marker
2	10,380	75.00	10.9	Upper Marker

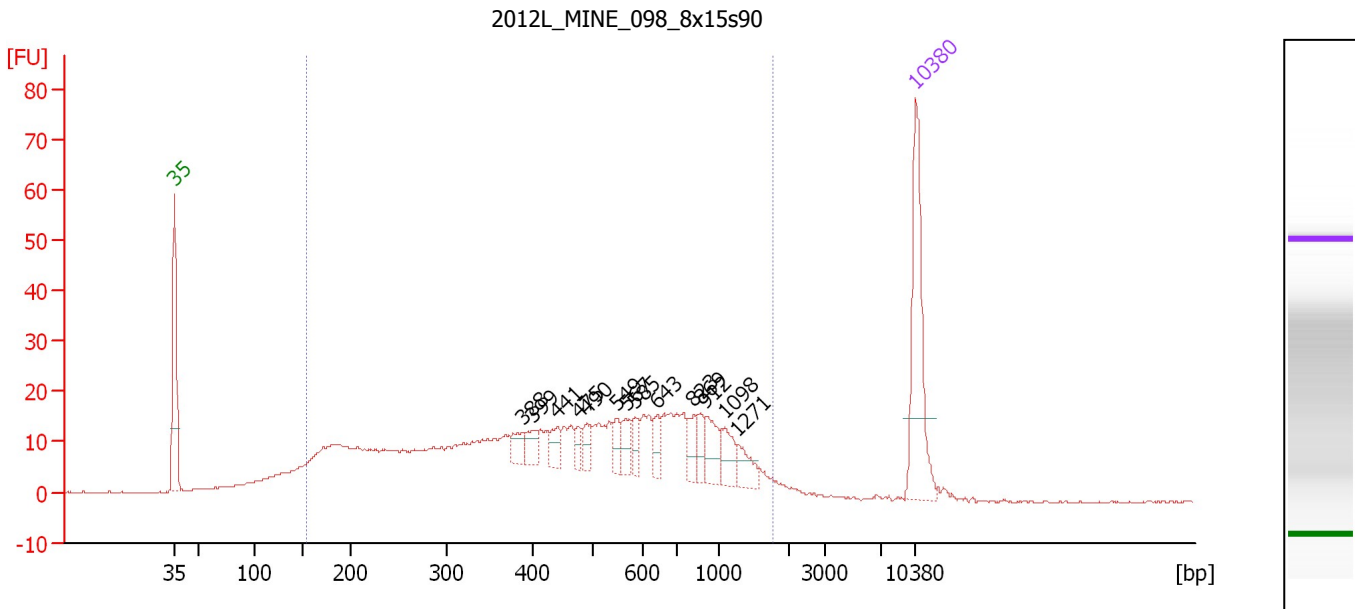
**Region table for sample 6 : 2012L\_SAGA\_142\_8x15s90s**

From [bp]	To [bp]	Average Size [bp]	Molarity [pmol/l]	Conc. [pg/μl]	Corr. Area	% of Total	Size distribution in CV [%]	Color
103	1,000	378	6,947.1	1,242.09	713.4	94	45.1	Blue

Assay Class: High Sensitivity DNA Assay  
 Data Path: C:\...ents and Settings\Bioanalyzer\2012-08-16\2012-08-16\_001.xad

Created: 8/16/2012 10:26:42 AM  
 Modified: 8/16/2012 12:04:23 PM

**Electropherogram Summary Continued ...**



**Overall Results for sample 7 : 2012L MINE 098 8x15s90**

Number of peaks found: 14      Corr. Area 1: 665.4  
 Noise: 0.2

**Peak table for sample 7 : 2012L MINE 098 8x15s90**

Peak	Size [bp]	Conc. [pg/μl]	Molarity [pmol/l]	Observations
1	35	125.00	5,411.3	Lower Marker
2	388	14.24	55.6	
3	399	13.95	52.9	
4	441	14.36	49.3	
5	475	9.35	29.8	
6	490	12.93	40.0	
7	549	13.14	36.2	
8	567	15.89	42.5	
9	585	11.05	28.6	
10	643	12.37	29.2	
11	823	15.02	27.6	
12	869	12.53	21.8	
13	912	22.12	36.8	
14	1,098	18.13	25.0	
15	1,271	15.55	18.5	
16	10,380	75.00	10.9	Upper Marker

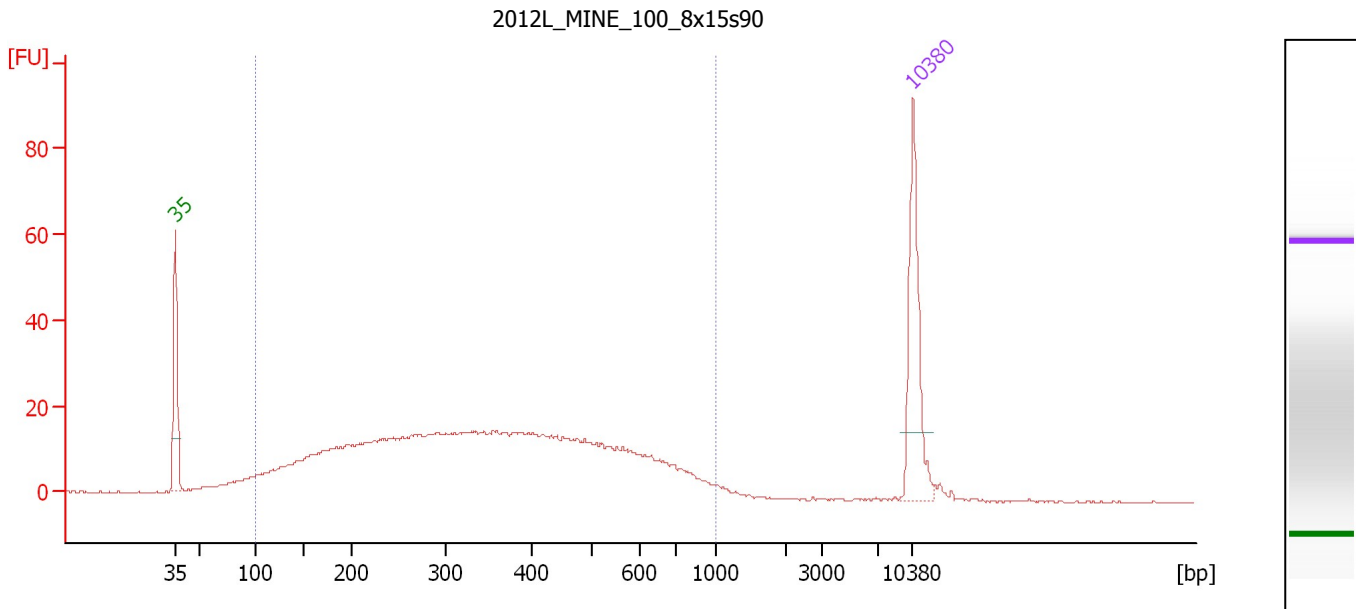
**Region table for sample 7 : 2012L MINE 098 8x15s90**

From [bp]	To [bp]	Average Size [bp]	Molarity [pmol/l]	Conc. [pg/μl]	Corr. Area	% of Total	Size distribution in CV [%]	Color
153	1,767	539	4,186.7	961.07	665.4	91	58.5	Blue

Assay Class: High Sensitivity DNA Assay  
 Data Path: C:\...ents and Settings\Bioanalyzer\2012-08-16\2012-08-16\_001.xad

Created: 8/16/2012 10:26:42 AM  
 Modified: 8/16/2012 12:04:23 PM

**Electropherogram Summary Continued ...**



**Overall Results for sample 8 : 2012L MINE 100 8x15s90**

Number of peaks found: 0                      Corr. Area 1: 696.6  
 Noise: 0.1

**Peak table for sample 8 : 2012L MINE 100 8x15s90**

Peak	Size [bp]	Conc. [pg/μl]	Molarity [pmol/l]	Observations
1	35	125.00	5,411.3	Lower Marker
2	10,380	75.00	10.9	Upper Marker

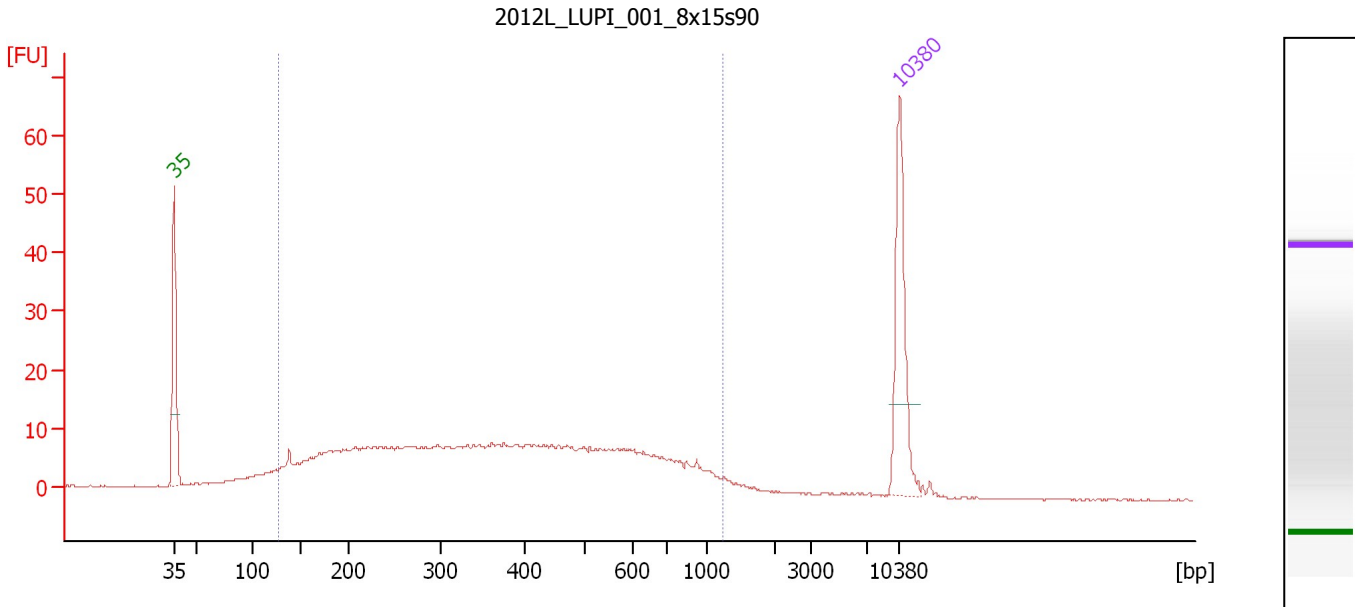
**Region table for sample 8 : 2012L MINE 100 8x15s90**

From [bp]	To [bp]	Average Size [bp]	Molarity [pmol/l]	Conc. [pg/μl]	Corr. Area	% of Total	Size distribution in CV [%]	Color
100	1,000	371	5,440.9	948.66	696.6	94	45.7	Blue

Assay Class: High Sensitivity DNA Assay  
 Data Path: C:\...ents and Settings\Bioanalyzer\2012-08-16\2012-08-16\_001.xad

Created: 8/16/2012 10:26:42 AM  
 Modified: 8/16/2012 12:04:23 PM

**Electropherogram Summary Continued ...**



**Overall Results for sample 9 : 2012L LUPI 001 8x15s90**

Number of peaks found: 0                      Corr. Area 1: 393.0  
 Noise: 0.1

**Peak table for sample 9 : 2012L LUPI 001 8x15s90**

Peak	Size [bp]	Conc. [pg/μl]	Molarity [pmol/l]	Observations
1	35	125.00	5,411.3	Lower Marker
2	10,380	75.00	10.9	Upper Marker

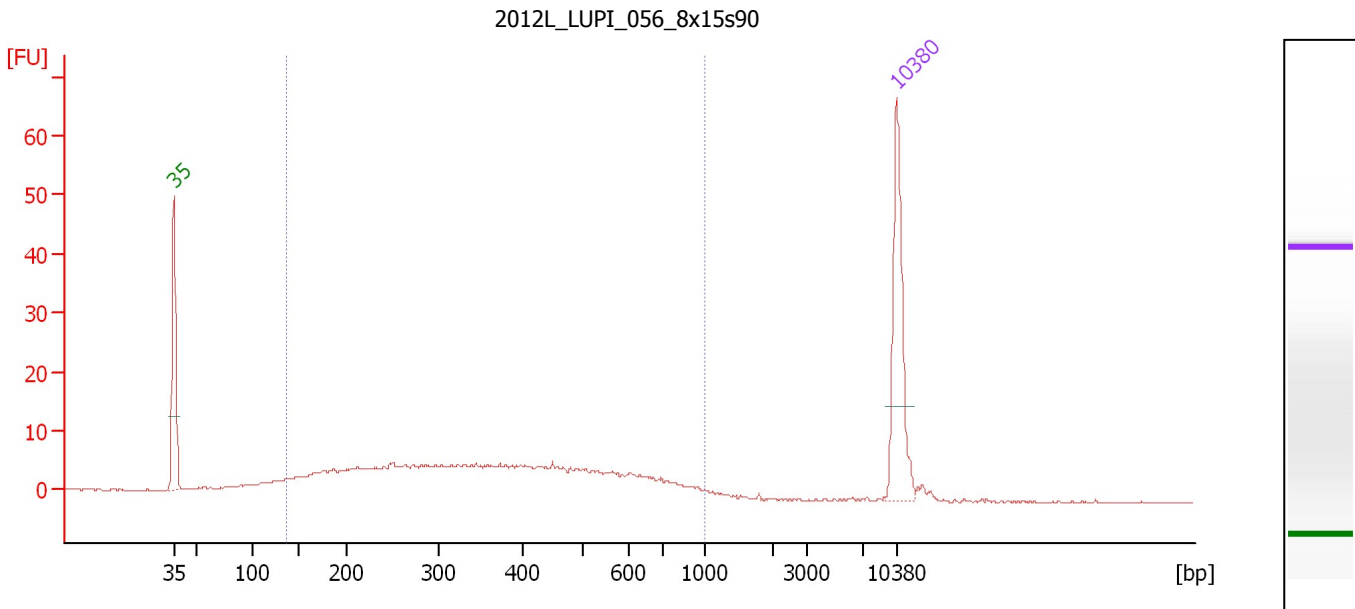
**Region table for sample 9 : 2012L LUPI 001 8x15s90**

From [bp]	To [bp]	Average Size [bp]	Molarity [pmol/l]	Conc. [pg/μl]	Corr. Area	% of Total	Size distribution in CV [%]	Color
127	1,228	412	3,848.0	732.02	393.0	91	50.2	Blue

Assay Class: High Sensitivity DNA Assay  
 Data Path: C:\...ents and Settings\Bioanalyzer\2012-08-16\2012-08-16\_001.xad

Created: 8/16/2012 10:26:42 AM  
 Modified: 8/16/2012 12:04:23 PM

**Electropherogram Summary Continued ...**



**Overall Results for sample 10 : 2012L\_LUPI\_056\_8x15s90**

Number of peaks found: 0                      Corr. Area 1: 219.0  
 Noise: 0.1

**Peak table for sample 10 : 2012L\_LUPI\_056\_8x15s90**

Peak	Size [bp]	Conc. [pg/μl]	Molarity [pmol/l]	Observations
1	35	125.00	5,411.3	Lower Marker
2	10,380	75.00	10.9	Upper Marker

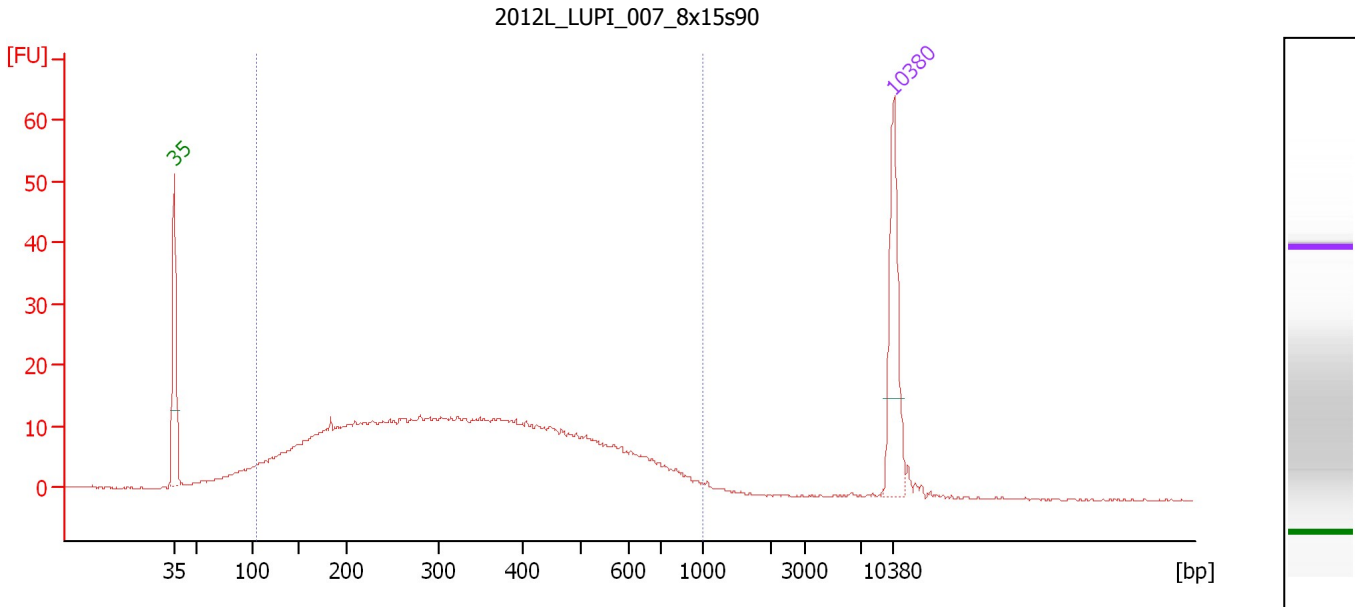
**Region table for sample 10 : 2012L\_LUPI\_056\_8x15s90**

From [bp]	To [bp]	Average Size [bp]	Molarity [pmol/l]	Conc. [pg/μl]	Corr. Area	% of Total	Size distribution in CV [%]	Color
137	1,000	386	2,138.5	410.48	219.0	90	43.8	Blue

Assay Class: High Sensitivity DNA Assay  
 Data Path: C:\...ents and Settings\Bioanalyzer\2012-08-16\2012-08-16\_001.xad

Created: 8/16/2012 10:26:42 AM  
 Modified: 8/16/2012 12:04:23 PM

**Electropherogram Summary Continued ...**



**Overall Results for sample 11 : 2012L\_LUPI\_007\_8x15s90**

Number of peaks found: 0                      Corr. Area 1: 553.7  
 Noise: 0.1

**Peak table for sample 11 : 2012L\_LUPI\_007\_8x15s90**

Peak	Size [bp]	Conc. [pg/μl]	Molarity [pmol/l]	Observations
1	35	125.00	5,411.3	Lower Marker
2	10,380	75.00	10.9	Upper Marker

**Region table for sample 11 : 2012L\_LUPI\_007\_8x15s90**

From [bp]	To [bp]	Average Size [bp]	Molarity [pmol/l]	Conc. [pg/μl]	Corr. Area	% of Total	Size distribution in CV [%]	Color
105	1,000	355	6,909.6	1,173.88	553.7	94	45.8	Blue

Assay Class: High Sensitivity DNA Assay  
Data Path: C:\...ents and Settings\Bioanalyzer\2012-08-16\2012-08-16\_001.xad

Created: 8/16/2012 10:26:42 AM  
Modified: 8/16/2012 12:04:23 PM

**Gel Image**

