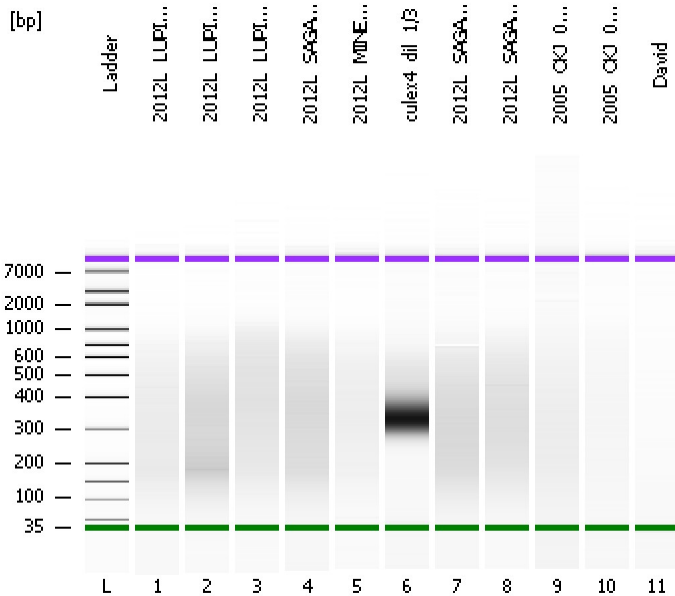


Assay Class: High Sensitivity DNA Assay
Data Path: C:\...ents and Settings\Bioanalyzer\2012-08-16\2012-08-16_002.xad

Created: 8/16/2012 11:26:16 AM
Modified: 8/16/2012 12:07:32 PM

Electrophoresis File Run Summary



Instrument Information:

Instrument Name: DE13701086 Firmware: C.01.069
Serial#: DE13701086 Type: G2938B

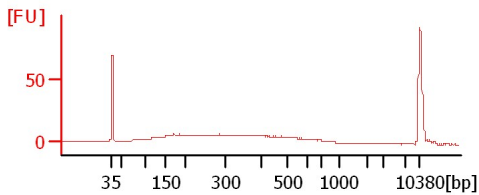
Assay Information:

Assay Origin Path: C:\Program Files\Agilent\2100 bioanalyzer\2100 expert\assays\dsDNA\High Sensitivity DNA.xsy
Assay Class: High Sensitivity DNA Assay
Version: 1.03
Assay Comments: Copyright © 2003-2010 Agilent Technologies

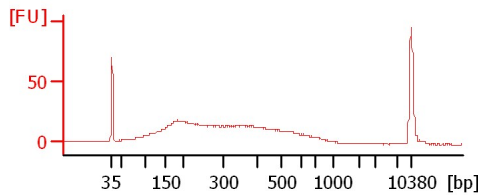
Chip Information:

Chip Lot #:
Reagent Kit Lot #:
Chip Comments:

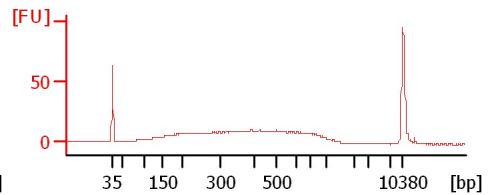
2012L_LUPI_024_7x15s90s



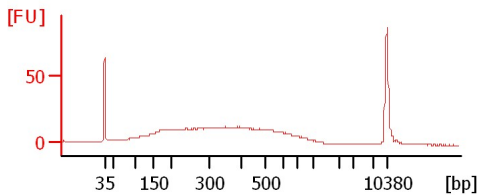
2012L_LUPI_081_7x15s90s



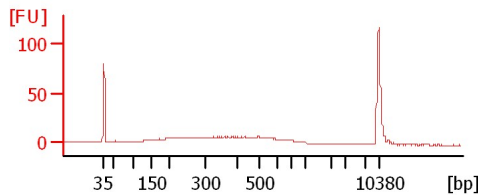
2012L_LUPI_082_7x15s90s



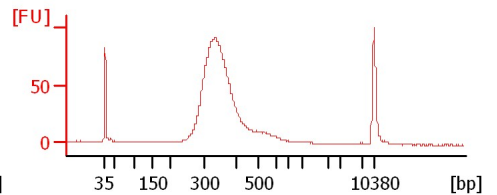
2012L_SAGA_131_1x>15s90s



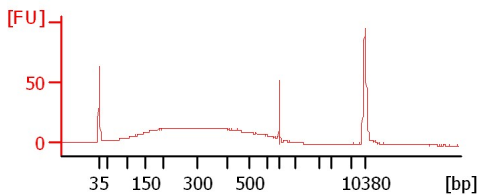
2012L_MINE001_dil1/2_1x>15s90s



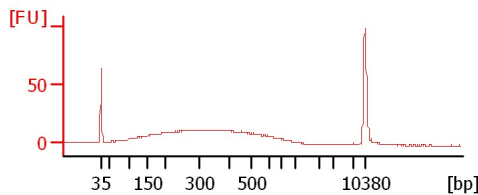
culex4_dil_1/3



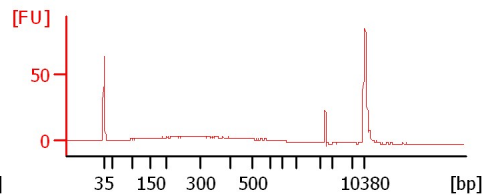
2012L_SAGA_136_7x15s90s



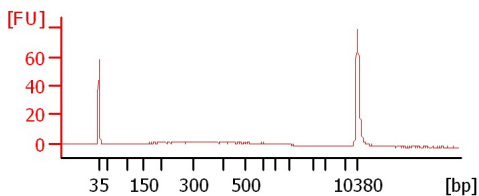
2012L_SAGA_141_7x15s90s



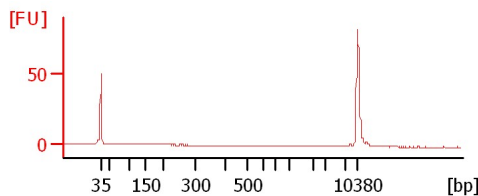
2005_OKJ_039_7x15s90s



2005_OKJ_040_7x15s90s



David



Assay Class: High Sensitivity DNA Assay
Data Path: C:\...ents and Settings\Bioanalyzer\2012-08-16\2012-08-16_002.xad

Created: 8/16/2012 11:26:16 AM
Modified: 8/16/2012 12:07:32 PM

Electrophoresis File Run Summary (Chip Summary)

Sample Name	Sample Comment	Rest. Digest	Status	Observation	Result Label	Result Color
2012L_LUPI_024_7x15s90s		<input type="checkbox"/>	✓			
2012L_LUPI_081_7x15s90s		<input type="checkbox"/>	✓			
2012L_LUPI_082_7x15s90s		<input type="checkbox"/>	✓			
2012L_SAGA_131_1x>15s90s		<input type="checkbox"/>	✓			
2012L_MINE001_dil1/2_1x>15s90		<input type="checkbox"/>	✓			
culex4_dil_1/3		<input type="checkbox"/>	✓			
2012L_SAGA_136_7x15s90s		<input type="checkbox"/>	✓			
2012L_SAGA_141_7x15s90s		<input type="checkbox"/>	✓			
2005_OKJ_039_7x15s90s		<input type="checkbox"/>	✓			
2005_OKJ_040_7x15s90s		<input type="checkbox"/>	✓			
David		<input type="checkbox"/>	✓			
Ladder		<input type="checkbox"/>	✓			

Chip Lot #

Reagent Kit Lot #

Chip Comments :

Assay Class: High Sensitivity DNA Assay
Data Path: C:\...ents and Settings\Bioanalyzer\2012-08-16\2012-08-16_002.xad

Created: 8/16/2012 11:26:16 AM
Modified: 8/16/2012 12:07:32 PM

Electrophoresis Assay Details

General Analysis Settings

Number of Available Sample and Ladder Wells (Max.) : 12
Minimum Visible Range [s] : 32
Maximum Visible Range [s] : 138
Start Analysis Time Range [s] : 33
End Analysis Time Range [s] : 137.5
Ladder Concentration [pg/μl] : 1950
Uses Standard Area for Ladder Fragments
Lower Marker Concentration [pg/μl] : 125
Upper Marker Concentration [pg/μl] : 75
Used Upper Marker for Quantitation
Standard Curve Fit is Point to Point
Show Data Aligned to Lower and Upper Marker

Integrator Settings

Integration Start Time [s] : 33.05
Integration End Time [s] : 137
Slope Threshold : 0.8
Height Threshold [FU] : 5
Area Threshold : 0.1
Width Threshold [s] : 0.6
Baseline Plateau [s] : 0.5

Filter Settings

Filter Width [s] : 0.5
Polynomial Order : 4

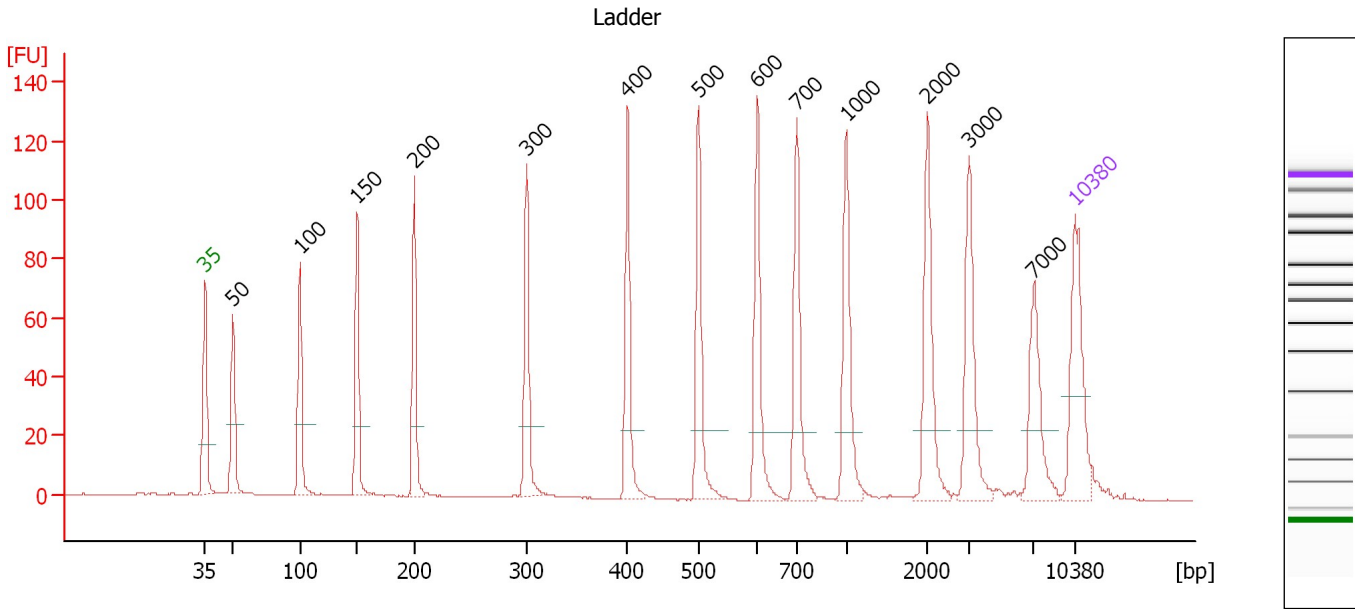
Ladder

Ladder Peak	Size	Area
1	35	160
2	50	210
3	100	208
4	150	221
5	200	242
6	300	270
7	400	305
8	500	306
9	600	336
10	700	321
11	1000	366
12	2000	413
13	3000	411
14	7000	400
15	10380	214

Assay Class: High Sensitivity DNA Assay
 Data Path: C:\...ents and Settings\Bioanalyzer\2012-08-16\2012-08-16_002.xad

Created: 8/16/2012 11:26:16 AM
 Modified: 8/16/2012 12:07:32 PM

Electropherogram Summary



Overall Results for Ladder

Noise: 0.1

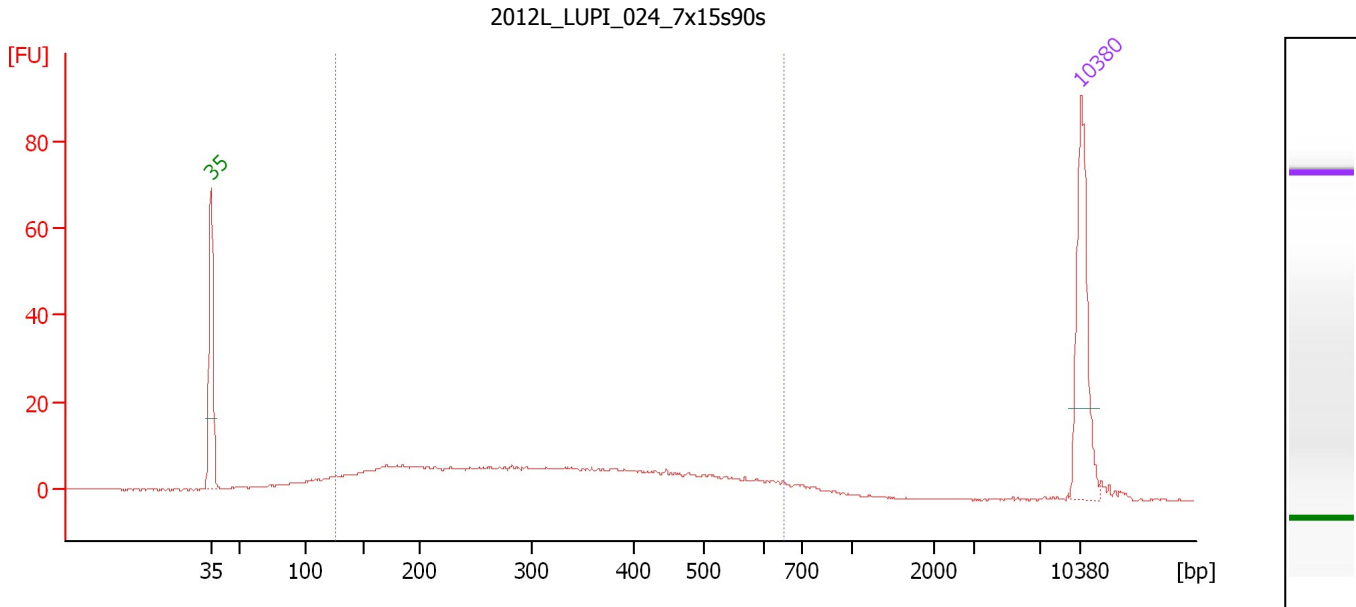
Peak table for Ladder

Peak	Size [bp]	Conc. [pg/μl]	Molarity [pmol/l]	Observations
1	35	125.00	5,411.3	Lower Marker
2	50	150.00	4,545.5	Ladder Peak
3	100	150.00	2,272.7	Ladder Peak
4	150	150.00	1,515.2	Ladder Peak
5	200	150.00	1,136.4	Ladder Peak
6	300	150.00	757.6	Ladder Peak
7	400	150.00	568.2	Ladder Peak
8	500	150.00	454.5	Ladder Peak
9	600	150.00	378.8	Ladder Peak
10	700	150.00	324.7	Ladder Peak
11	1,000	150.00	227.3	Ladder Peak
12	2,000	150.00	113.6	Ladder Peak
13	3,000	150.00	75.8	Ladder Peak
14	7,000	150.00	32.5	Ladder Peak
15	10,380	75.00	10.9	Upper Marker

Assay Class: High Sensitivity DNA Assay
 Data Path: C:\...ents and Settings\Bioanalyzer\2012-08-16\2012-08-16_002.xad

Created: 8/16/2012 11:26:16 AM
 Modified: 8/16/2012 12:07:32 PM

Electropherogram Summary Continued ...



Overall Results for sample 1 : 2012L LUPI 024 7x15s90s

Number of peaks found: 0 Corr. Area 1: 289.1
 Noise: 0.2

Peak table for sample 1 : 2012L LUPI 024 7x15s90s

Peak	Size [bp]	Conc. [pg/μl]	Molarity [pmol/l]	Observations
1	35	125.00	5,411.3	Lower Marker
2	10,380	75.00	10.9	Upper Marker

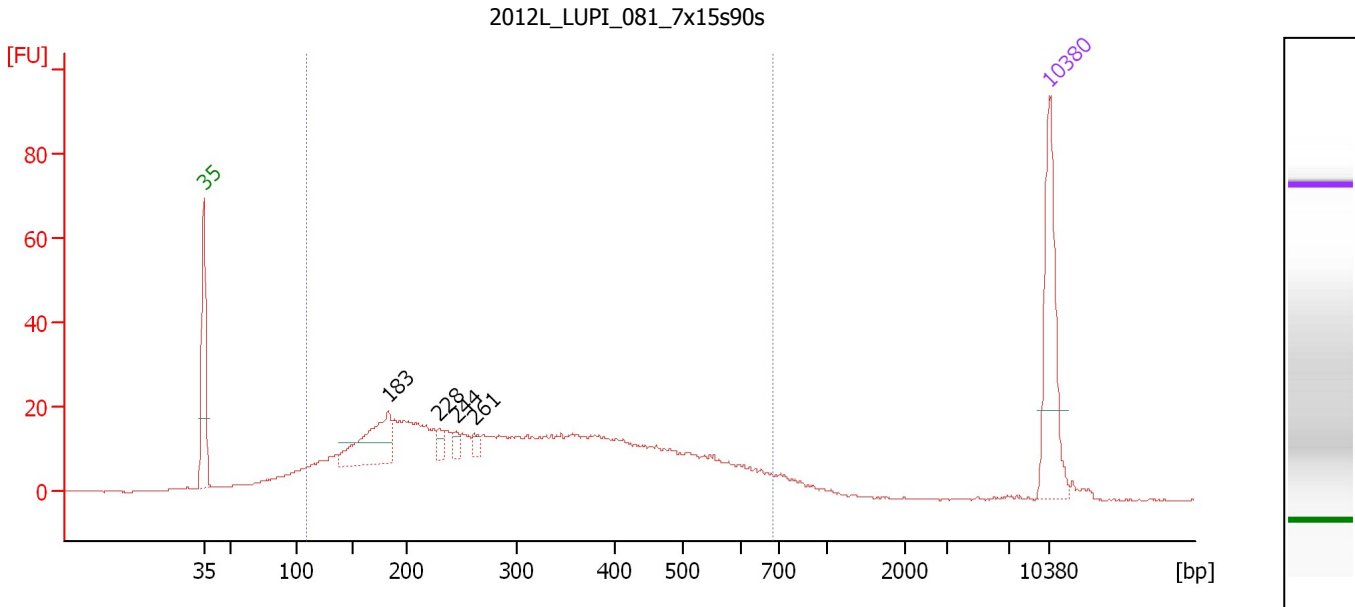
Region table for sample 1 : 2012L LUPI 024 7x15s90s

From [bp]	To [bp]	Average Size [bp]	Molarity [pmol/l]	Conc. [pg/μl]	Corr. Area	% of Total	Size distribution in CV [%]	Color
125	653	331	2,481.1	417.12	289.1	85	39.6	Blue

Assay Class: High Sensitivity DNA Assay
 Data Path: C:\...ents and Settings\Bioanalyzer\2012-08-16\2012-08-16_002.xad

Created: 8/16/2012 11:26:16 AM
 Modified: 8/16/2012 12:07:32 PM

Electropherogram Summary Continued ...



Overall Results for sample 2 : 2012L LUPI 081 7x15s90s

Number of peaks found: 4 Corr. Area 1: 734.4
 Noise: 0.2

Peak table for sample 2 : 2012L LUPI 081 7x15s90s

Peak	Size [bp]	Conc. [pg/μl]	Molarity [pmol/l]	Observations
1	35	125.00	5,411.3	Lower Marker
2	183	87.85	728.5	
3	228	10.43	69.2	
4	244	8.71	54.0	
5	261	8.05	46.6	
6	10,380	75.00	10.9	Upper Marker

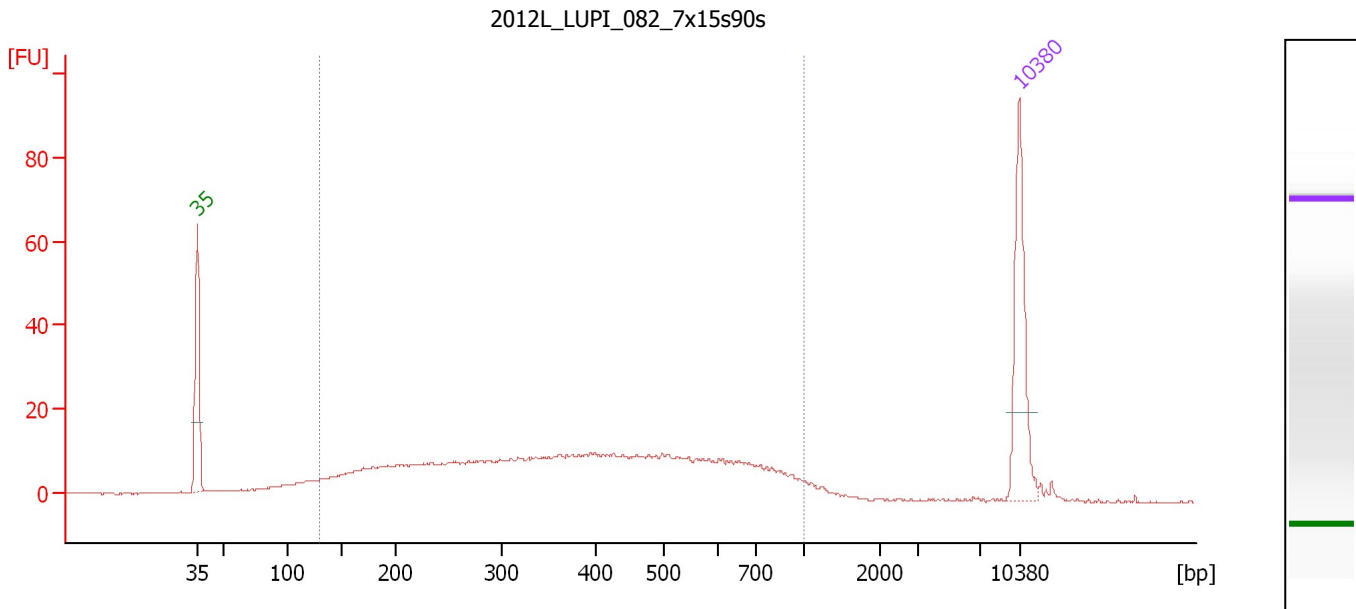
Region table for sample 2 : 2012L LUPI 081 7x15s90s

From [bp]	To [bp]	Average Size [bp]	Molarity [pmol/l]	Conc. [pg/μl]	Corr. Area	% of Total	Size distribution in CV [%]	Color
110	684	322	6,155.0	983.10	734.4	90	42.0	Blue

Assay Class: High Sensitivity DNA Assay
 Data Path: C:\...ents and Settings\Bioanalyzer\2012-08-16\2012-08-16_002.xad

Created: 8/16/2012 11:26:16 AM
 Modified: 8/16/2012 12:07:32 PM

Electropherogram Summary Continued ...



Overall Results for sample 3 : 2012L LUPI 082 7x15s90s

Number of peaks found: 0 Corr. Area 1: 471.0
 Noise: 0.2

Peak table for sample 3 : 2012L LUPI 082 7x15s90s

Peak	Size [bp]	Conc. [pg/μl]	Molarity [pmol/l]	Observations
1	35	125.00	5,411.3	Lower Marker
2	10,380	75.00	10.9	Upper Marker

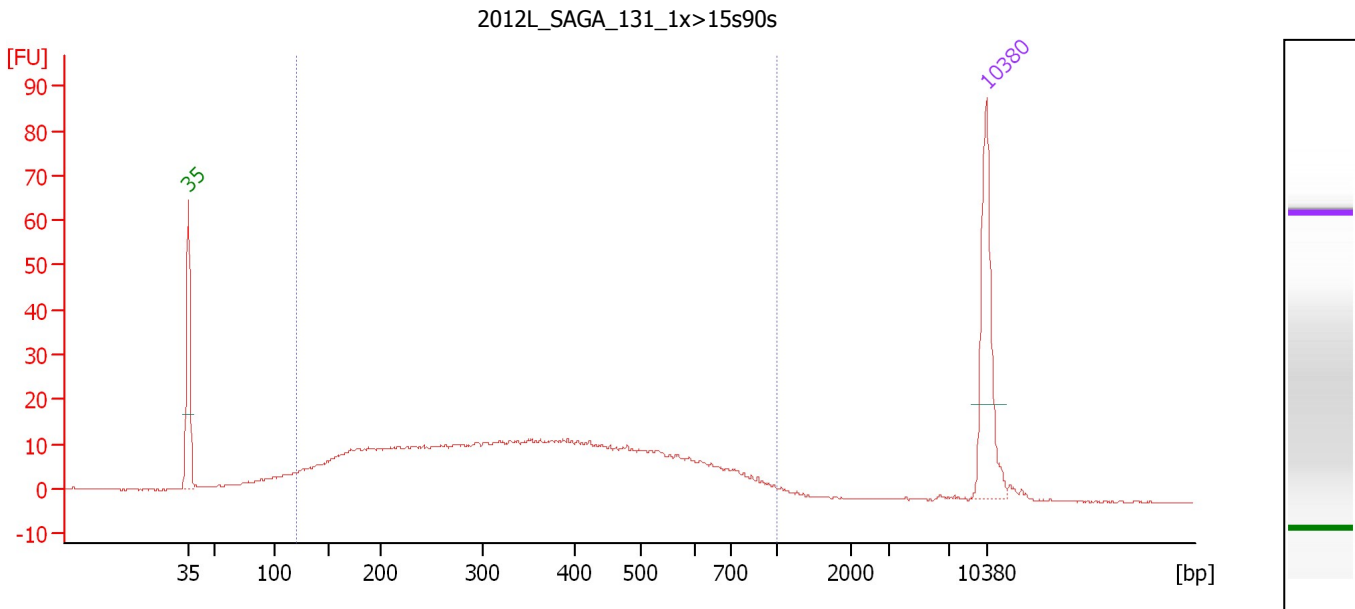
Region table for sample 3 : 2012L LUPI 082 7x15s90s

From [bp]	To [bp]	Average Size [bp]	Molarity [pmol/l]	Conc. [pg/μl]	Corr. Area	% of Total	Size distribution in CV [%]	Color
130	1,000	413	3,347.7	660.02	471.0	90	44.9	Blue

Assay Class: High Sensitivity DNA Assay
 Data Path: C:\...ents and Settings\Bioanalyzer\2012-08-16\2012-08-16_002.xad

Created: 8/16/2012 11:26:16 AM
 Modified: 8/16/2012 12:07:32 PM

Electropherogram Summary Continued ...



Overall Results for sample 4 : 2012L_SAGA_131_1x>15s90s

Number of peaks found: 0 Corr. Area 1: 554.3
 Noise: 0.1

Peak table for sample 4 : 2012L_SAGA_131_1x>15s90s

Peak	Size [bp]	Conc. [pg/μl]	Molarity [pmol/l]	Observations
1	35	125.00	5,411.3	Lower Marker
2	10,380	75.00	10.9	Upper Marker

Region table for sample 4 : 2012L_SAGA_131_1x>15s90s

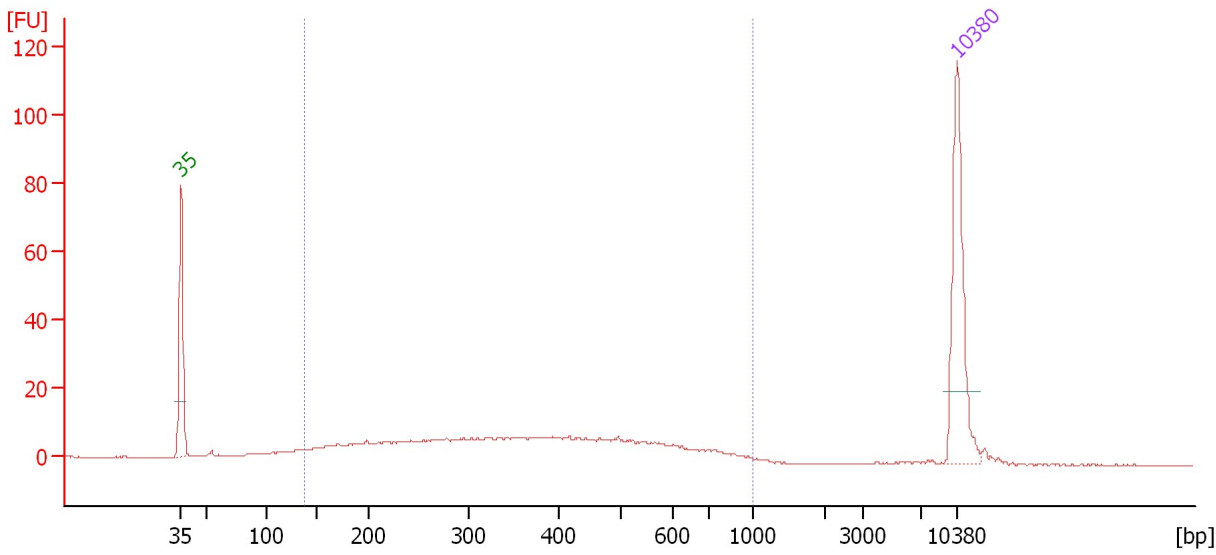
From [bp]	To [bp]	Average Size [bp]	Molarity [pmol/l]	Conc. [pg/μl]	Corr. Area	% of Total	Size distribution in CV [%]	Color
120	1,000	375	4,423.8	802.31	554.3	93	44.8	Blue

Assay Class: High Sensitivity DNA Assay
 Data Path: C:\...ents and Settings\Bioanalyzer\2012-08-16\2012-08-16_002.xad

Created: 8/16/2012 11:26:16 AM
 Modified: 8/16/2012 12:07:32 PM

Electropherogram Summary Continued ...

2012L_MINE001_dil1/2_1x>15s90s



Overall Results for sample 5 : 2012L_MINE001_dil1/2_1x>15s90s

Number of peaks found: 0 Corr. Area 1: 290.9
 Noise: 0.1

Peak table for sample 5 : 2012L_MINE001_dil1/2_1x>15s90s

Peak	Size [bp]	Conc. [pg/μl]	Molarity [pmol/l]	Observations
1	35	125.00	5,411.3	Lower Marker
2	10,380	75.00	10.9	Upper Marker

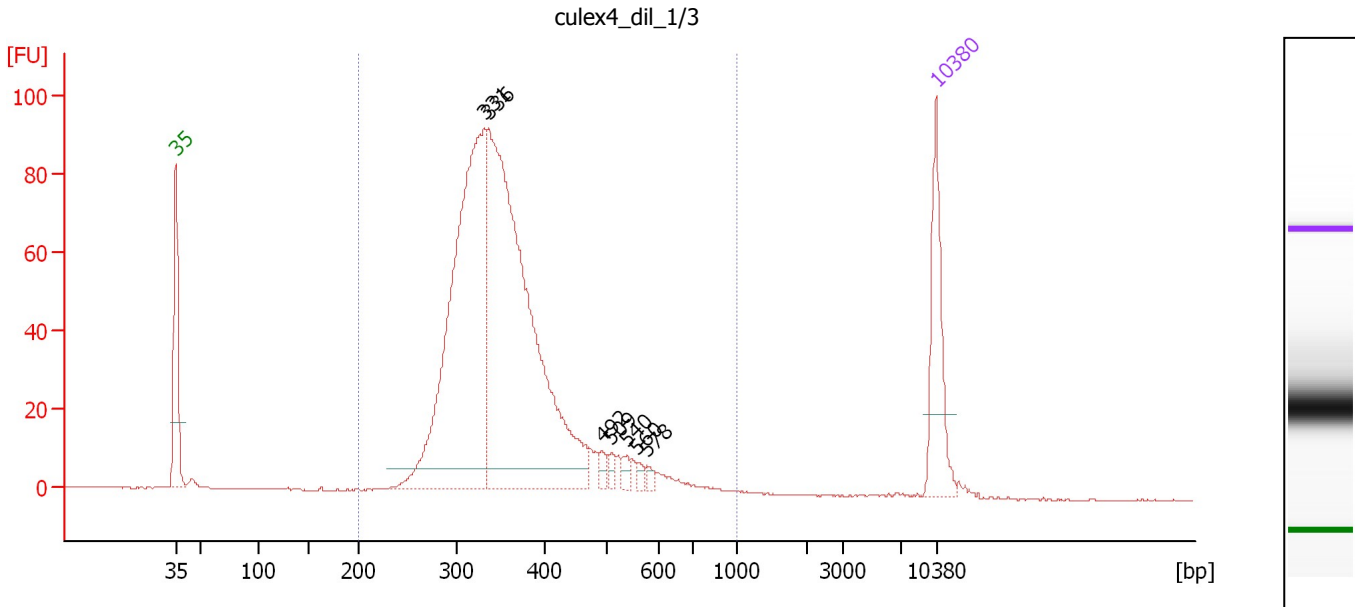
Region table for sample 5 : 2012L_MINE001_dil1/2_1x>15s90s

From [bp]	To [bp]	Average Size [bp]	Molarity [pmol/l]	Conc. [pg/μl]	Corr. Area	% of Total	Size distribution in CV [%]	Color
138	1,000	388	1,486.6	290.18	290.9	89	42.0	Blue

Assay Class: High Sensitivity DNA Assay
 Data Path: C:\...ents and Settings\Bioanalyzer\2012-08-16\2012-08-16_002.xad

Created: 8/16/2012 11:26:16 AM
 Modified: 8/16/2012 12:07:32 PM

Electropherogram Summary Continued ...



Overall Results for sample 6 : culex4 dil 1/3

Number of peaks found: 7 Corr. Area 1: 1,165.8
 Noise: 0.1

Peak table for sample 6 : culex4 dil 1/3

Peak	Size [bp]	Conc. [pg/μl]	Molarity [pmol/l]	Observations
1	35	125.00	5,411.3	Lower Marker
2	331	557.92	2,555.9	
3	336	704.18	3,179.4	
4	492	9.36	28.8	
5	509	8.32	24.8	
6	540	8.74	24.5	
7	560	5.55	15.0	
8	578	5.52	14.5	
9	10,380	75.00	10.9	Upper Marker

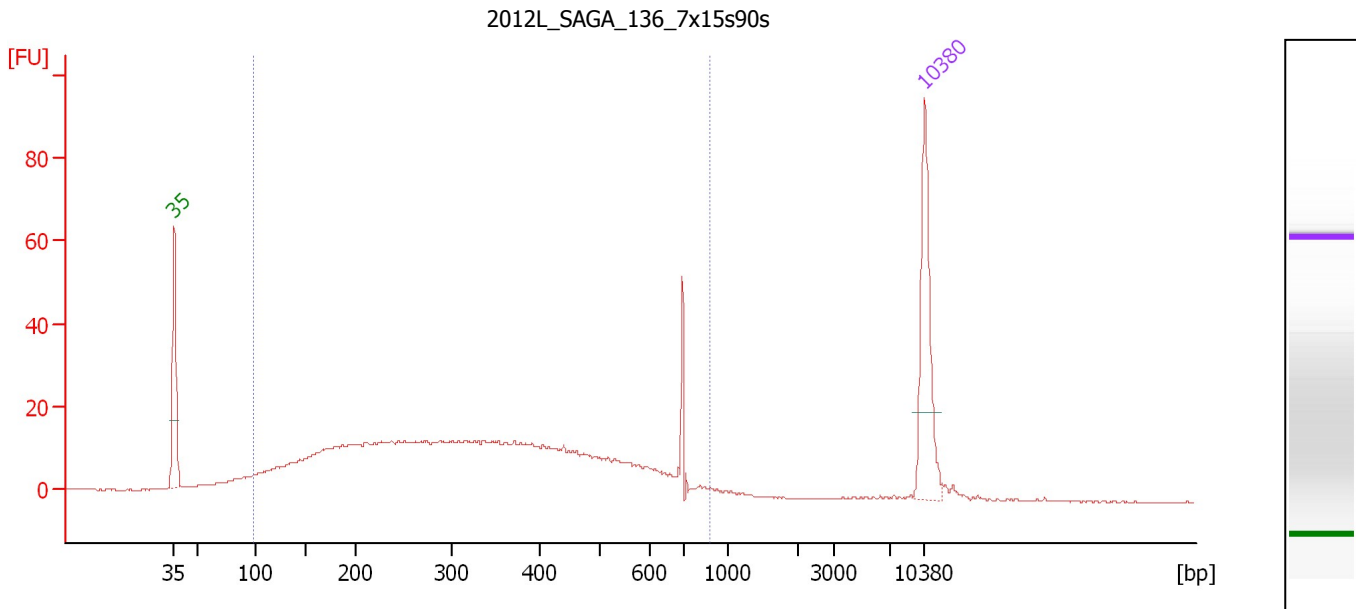
Region table for sample 6 : culex4 dil 1/3

From [bp]	To [bp]	Average Size [bp]	Molarity [pmol/l]	Conc. [pg/μl]	Corr. Area	% of Total	Size distribution in CV [%]	Color
200	1,000	364	5,957.9	1,364.13	1,165.8	98	22.5	Blue

Assay Class: High Sensitivity DNA Assay
 Data Path: C:\...ents and Settings\Bioanalyzer\2012-08-16\2012-08-16_002.xad

Created: 8/16/2012 11:26:16 AM
 Modified: 8/16/2012 12:07:32 PM

Electropherogram Summary Continued ...



Overall Results for sample 7 : 2012L_SAGA_136_7x15s90s

Number of peaks found: 0 Corr. Area 1: 613.7
 Noise: 0.2

Peak table for sample 7 : 2012L_SAGA_136_7x15s90s

Peak	Size [bp]	Conc. [pg/μl]	Molarity [pmol/l]	Observations
1	35	125.00	5,411.3	Lower Marker
2	10,380	75.00	10.9	Upper Marker

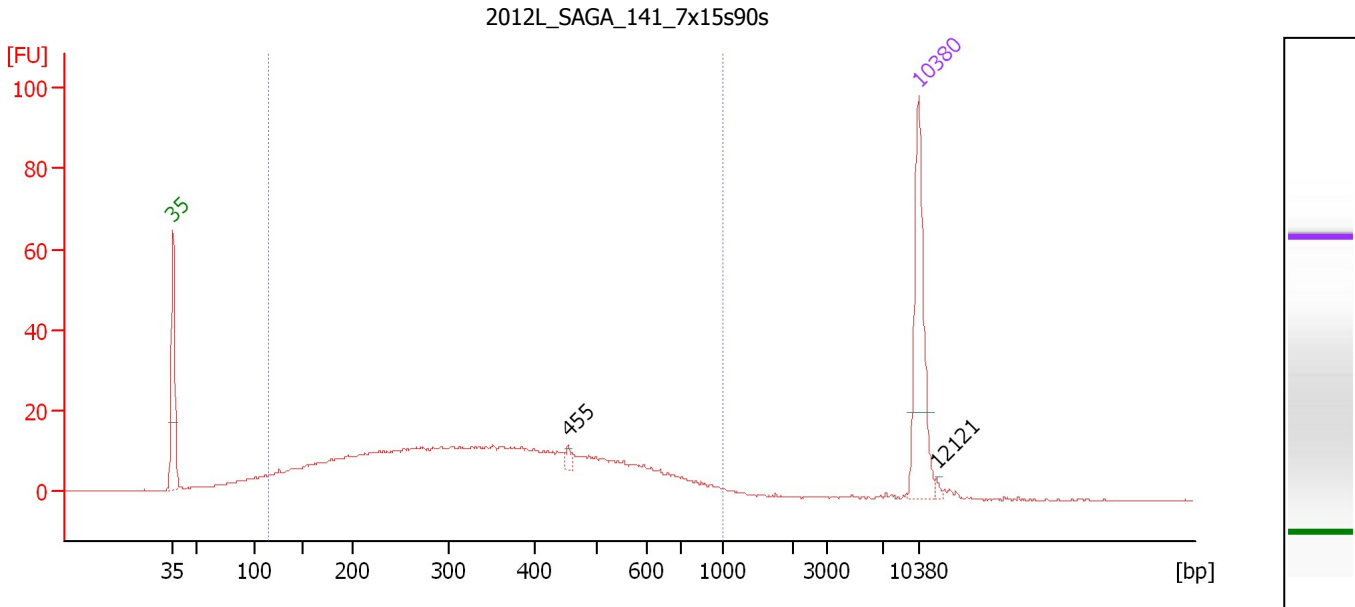
Region table for sample 7 : 2012L_SAGA_136_7x15s90s

From [bp]	To [bp]	Average Size [bp]	Molarity [pmol/l]	Conc. [pg/μl]	Corr. Area	% of Total	Size distribution in CV [%]	Color
98	882	346	5,392.9	885.99	613.7	93	44.8	Blue

Assay Class: High Sensitivity DNA Assay
 Data Path: C:\...ents and Settings\Bioanalyzer\2012-08-16\2012-08-16_002.xad

Created: 8/16/2012 11:26:16 AM
 Modified: 8/16/2012 12:07:32 PM

Electropherogram Summary Continued ...



Overall Results for sample 8 : 2012L_SAGA_141_7x15s90s

Number of peaks found: 2 Corr. Area 1: 537.7
 Noise: 0.1

Peak table for sample 8 : 2012L_SAGA_141_7x15s90s

Peak	Size [bp]	Conc. [pg/μl]	Molarity [pmol/l]	Observations
1	35	125.00	5,411.3	Lower Marker
2	455	4.64	15.5	
3	10,380	75.00	10.9	Upper Marker
4	12,121	0.00	0.0	

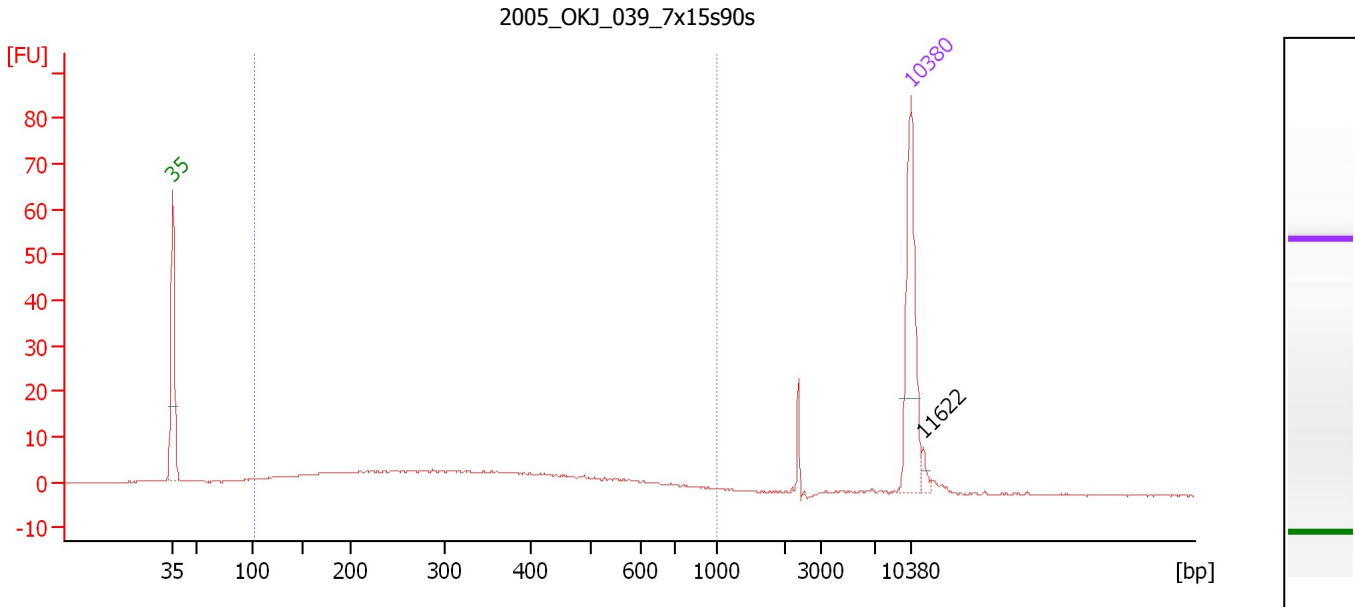
Region table for sample 8 : 2012L_SAGA_141_7x15s90s

From [bp]	To [bp]	Average Size [bp]	Molarity [pmol/l]	Conc. [pg/μl]	Corr. Area	% of Total	Size distribution in CV [%]	Color
115	1,000	365	4,021.1	712.69	537.7	91	44.6	Blue

Assay Class: High Sensitivity DNA Assay
 Data Path: C:\...ents and Settings\Bioanalyzer\2012-08-16\2012-08-16_002.xad

Created: 8/16/2012 11:26:16 AM
 Modified: 8/16/2012 12:07:32 PM

Electropherogram Summary Continued ...



Overall Results for sample 9 : 2005 OKJ 039 7x15s90s

Number of peaks found: 1 Corr. Area 1: 154.2
 Noise: 0.1

Peak table for sample 9 : 2005 OKJ 039 7x15s90s

Peak	Size [bp]	Conc. [pg/μl]	Molarity [pmol/l]	Observations
1	35	125.00	5,411.3	Lower Marker
2	10,380	75.00	10.9	Upper Marker
3	11,622	0.00	0.0	

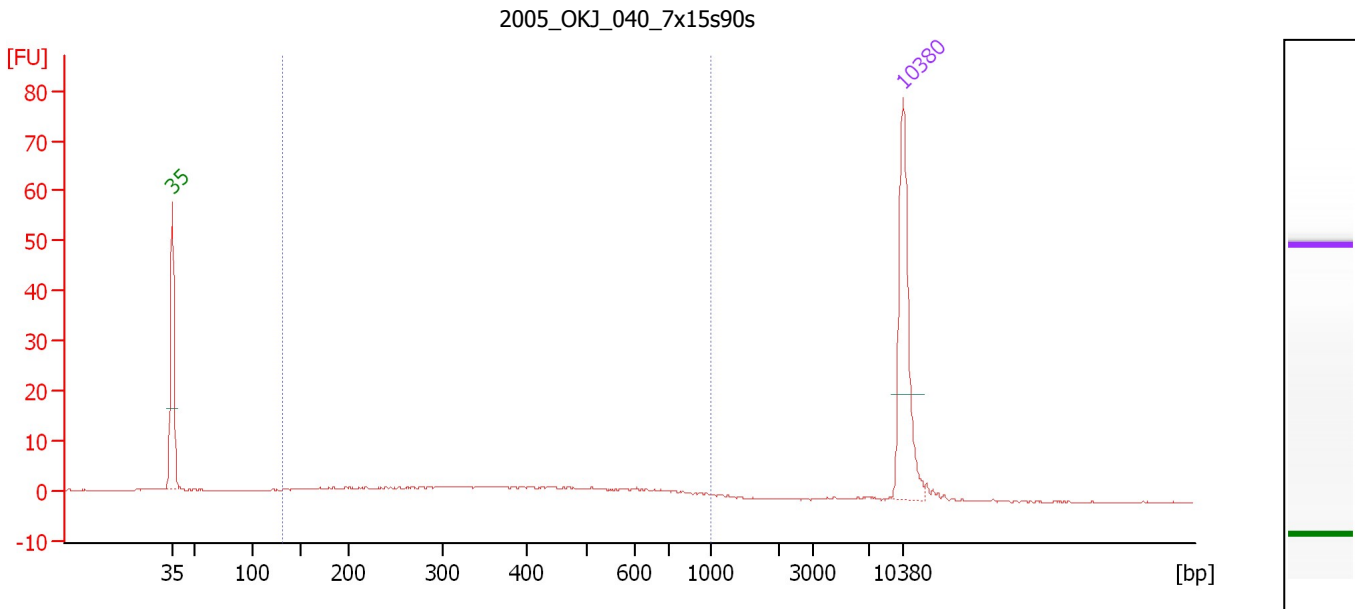
Region table for sample 9 : 2005 OKJ 039 7x15s90s

From [bp]	To [bp]	Average Size [bp]	Molarity [pmol/l]	Conc. [pg/μl]	Corr. Area	% of Total	Size distribution in CV [%]	Color
102	1,000	342	1,524.5	251.88	154.2	84	44.7	Blue

Assay Class: High Sensitivity DNA Assay
 Data Path: C:\...ents and Settings\Bioanalyzer\2012-08-16\2012-08-16_002.xad

Created: 8/16/2012 11:26:16 AM
 Modified: 8/16/2012 12:07:32 PM

Electropherogram Summary Continued ...



Overall Results for sample 10 : 2005 OKJ 040 7x15s90s

Number of peaks found: 0 Corr. Area 1: 74.4
 Noise: 0.1

Peak table for sample 10 : 2005 OKJ 040 7x15s90s

Peak	Size [bp]	Conc. [pg/μl]	Molarity [pmol/l]	Observations
1	35	125.00	5,411.3	Lower Marker
2	10,380	75.00	10.9	Upper Marker

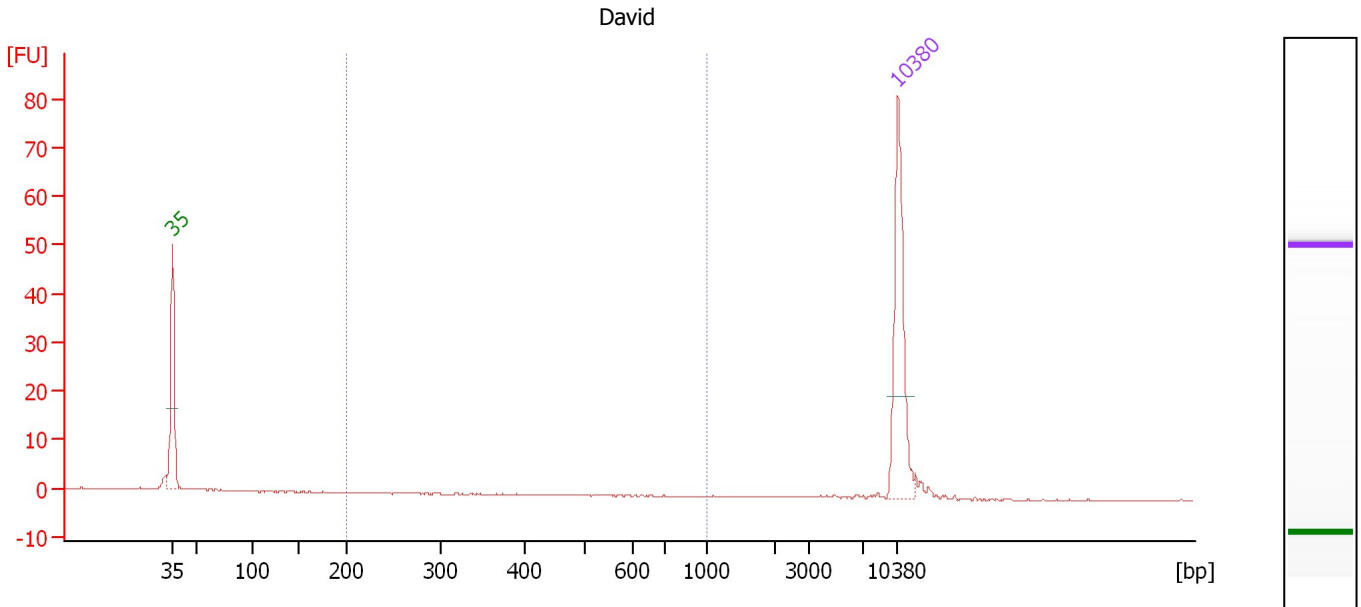
Region table for sample 10 : 2005 OKJ 040 7x15s90s

From [bp]	To [bp]	Average Size [bp]	Molarity [pmol/l]	Conc. [pg/μl]	Corr. Area	% of Total	Size distribution in CV [%]	Color
132	1,000	410	564.6	112.02	74.4	80	44.7	Blue

Assay Class: High Sensitivity DNA Assay
 Data Path: C:\...ents and Settings\Bioanalyzer\2012-08-16\2012-08-16_002.xad

Created: 8/16/2012 11:26:16 AM
 Modified: 8/16/2012 12:07:32 PM

Electropherogram Summary Continued ...



Overall Results for sample 11 : David

Number of peaks found: 0 Corr. Area 1: 0.0
 Noise: 0.1

Peak table for sample 11 : David

Peak	Size [bp]	Conc. [pg/μl]	Molarity [pmol/l]	Observations
1	35	125.00	5,411.3	Lower Marker
2	10,380	75.00	10.9	Upper Marker

Region table for sample 11 : David

From [bp]	To [bp]	Average Size [bp]	Molarity [pmol/l]	Conc. [pg/μl]	Corr. Area	% of Total	Size distribution in CV [%]	Color
200	1,000	0	0.0	0.00	0.0	0	0.0	Blue

Assay Class: High Sensitivity DNA Assay
Data Path: C:\...ents and Settings\Bioanalyzer\2012-08-16\2012-08-16_002.xad

Created: 8/16/2012 11:26:16 AM
Modified: 8/16/2012 12:07:32 PM

Gel Image

