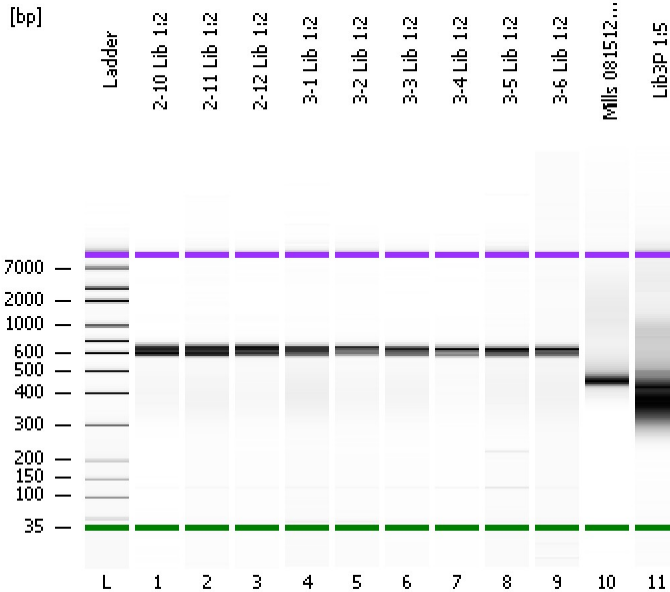


Assay Class: High Sensitivity DNA Assay  
Data Path: C:\...ents and Settings\Bioanalyzer\2012-08-16\2012-08-16\_003.xad

Created: 8/16/2012 12:29:14 PM  
Modified: 8/16/2012 1:11:36 PM

### Electrophoresis File Run Summary



#### Instrument Information:

Instrument Name: DE13701086      Firmware: C.01.069  
Serial#: DE13701086      Type: G2938B

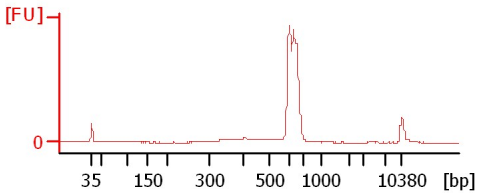
#### Assay Information:

Assay Origin Path: C:\Program Files\Agilent\2100 bioanalyzer\2100 expert\assays\dsDNA\High Sensitivity DNA.xsy  
Assay Class: High Sensitivity DNA Assay  
Version: 1.03  
Assay Comments: Copyright © 2003-2010 Agilent Technologies

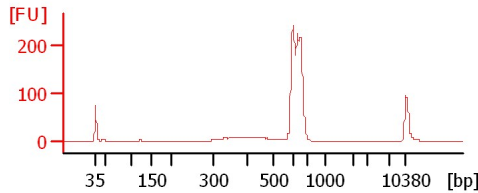
#### Chip Information:

Chip Lot #:      Reagent Kit Lot #:      Chip Comments:

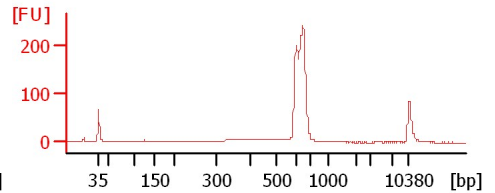
2-10 Lib 1:2



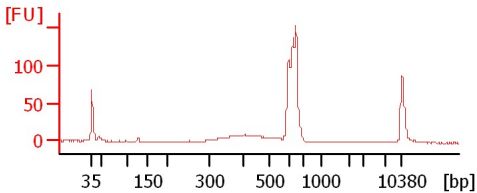
2-11 Lib 1:2



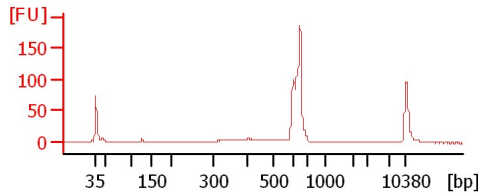
2-12 Lib 1:2



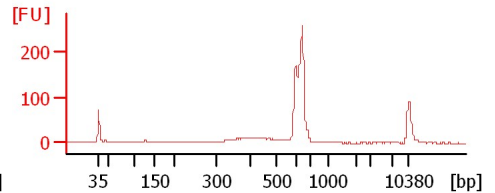
3-1 Lib 1:2



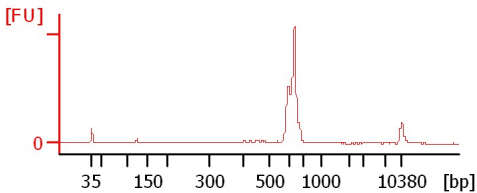
3-2 Lib 1:2



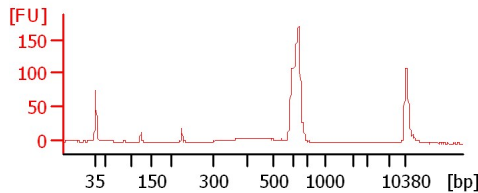
3-3 Lib 1:2



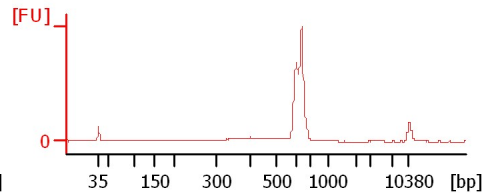
3-4 Lib 1:2



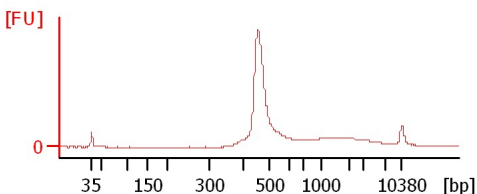
3-5 Lib 1:2



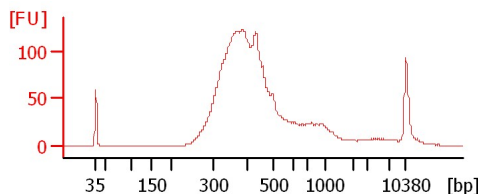
3-6 Lib 1:2



Mills 081512 1:10



Lib3P 1:5



Assay Class: High Sensitivity DNA Assay  
 Data Path: C:\...ents and Settings\Bioanalyzer\2012-08-16\2012-08-16\_003.xad

Created: 8/16/2012 12:29:14 PM  
 Modified: 8/16/2012 1:11:36 PM

**Electrophoresis File Run Summary (Chip Summary)**

Sample Name	Sample Comment	Rest. Digest	Status	Observation	Result Label	Result Color
2-10 Lib 1:2		<input type="checkbox"/>	✓			
2-11 Lib 1:2		<input type="checkbox"/>	✓			
2-12 Lib 1:2		<input type="checkbox"/>	✓			
3-1 Lib 1:2		<input type="checkbox"/>	✓			
3-2 Lib 1:2		<input type="checkbox"/>	✓			
3-3 Lib 1:2		<input type="checkbox"/>	✓			
3-4 Lib 1:2		<input type="checkbox"/>	✓			
3-5 Lib 1:2		<input type="checkbox"/>	✓			
3-6 Lib 1:2		<input type="checkbox"/>	✓			
Mills 081512 1:10		<input type="checkbox"/>	✓			
Lib3P 1:5		<input type="checkbox"/>	✓			
Ladder		<input type="checkbox"/>	✓			

**Chip Lot #**

**Reagent Kit Lot #**

**Chip Comments :**

Assay Class: High Sensitivity DNA Assay  
Data Path: C:\...ents and Settings\Bioanalyzer\2012-08-16\2012-08-16\_003.xad

Created: 8/16/2012 12:29:14 PM  
Modified: 8/16/2012 1:11:36 PM

**Electrophoresis Assay Details**

**General Analysis Settings**

Number of Available Sample and Ladder Wells (Max.) : 12  
Minimum Visible Range [s] : 32  
Maximum Visible Range [s] : 138  
Start Analysis Time Range [s] : 33  
End Analysis Time Range [s] : 137.5  
Ladder Concentration [pg/μl] : 1950  
Uses Standard Area for Ladder Fragments  
Lower Marker Concentration [pg/μl] : 125  
Upper Marker Concentration [pg/μl] : 75  
Used Upper Marker for Quantitation  
Standard Curve Fit is Point to Point  
Show Data Aligned to Lower and Upper Marker

**Integrator Settings**

Integration Start Time [s] : 33.05  
Integration End Time [s] : 137  
Slope Threshold : 0.8  
Height Threshold [FU] : 5  
Area Threshold : 0.1  
Width Threshold [s] : 0.6  
Baseline Plateau [s] : 0.5

**Filter Settings**

Filter Width [s] : 0.5  
Polynomial Order : 4

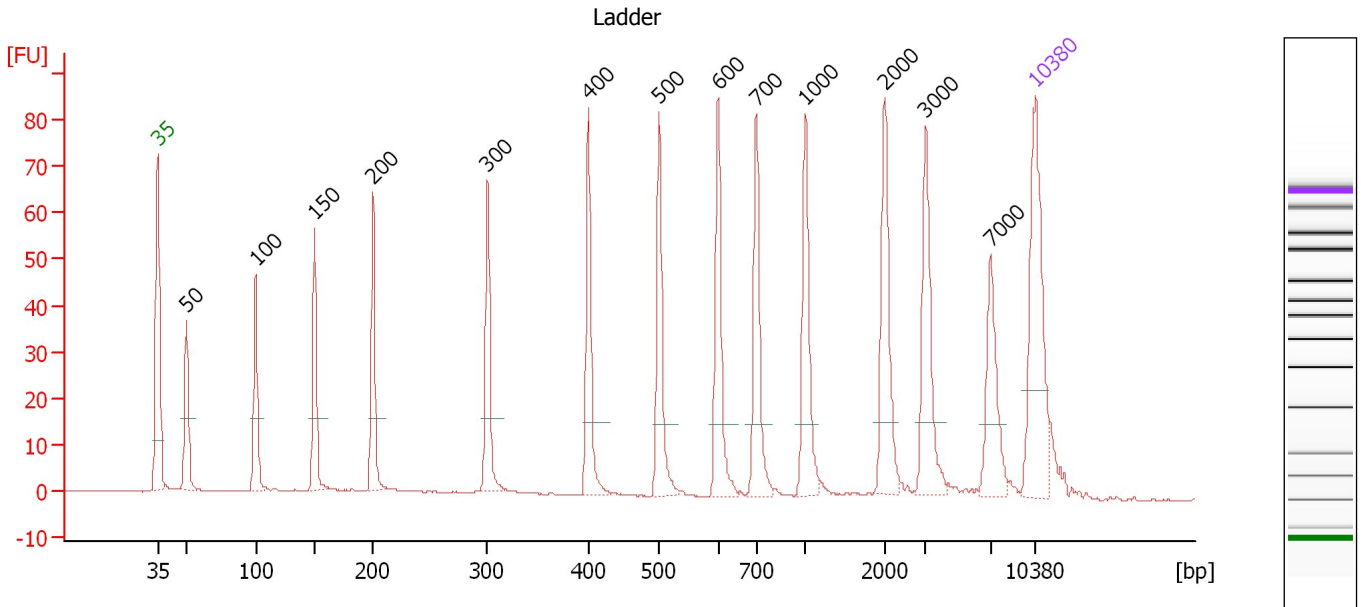
**Ladder**

Ladder Peak	Size	Area
1	35	160
2	50	210
3	100	208
4	150	221
5	200	242
6	300	270
7	400	305
8	500	306
9	600	336
10	700	321
11	1000	366
12	2000	413
13	3000	411
14	7000	400
15	10380	214

Assay Class: High Sensitivity DNA Assay  
 Data Path: C:\...ents and Settings\Bioanalyzer\2012-08-16\2012-08-16\_003.xad

Created: 8/16/2012 12:29:14 PM  
 Modified: 8/16/2012 1:11:36 PM

**Electropherogram Summary**



**Overall Results for Ladder**

Noise: 0.1

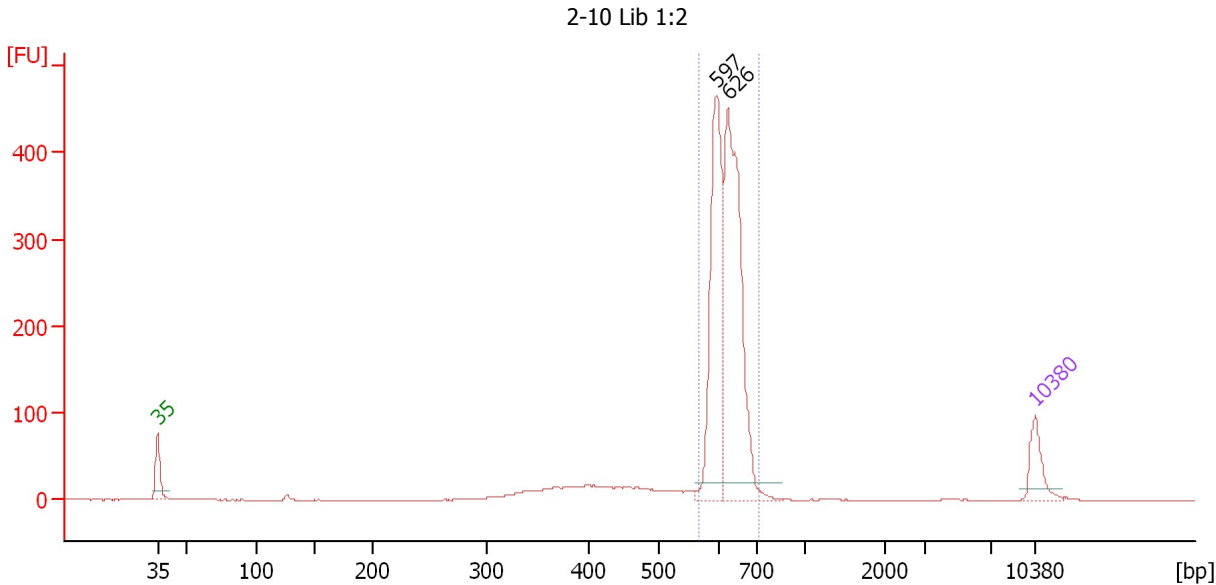
**Peak table for Ladder**

Peak	Size [bp]	Conc. [pg/μl]	Molarity [pmol/l]	Observations
1	35	125.00	5,411.3	Lower Marker
2	50	150.00	4,545.5	Ladder Peak
3	100	150.00	2,272.7	Ladder Peak
4	150	150.00	1,515.2	Ladder Peak
5	200	150.00	1,136.4	Ladder Peak
6	300	150.00	757.6	Ladder Peak
7	400	150.00	568.2	Ladder Peak
8	500	150.00	454.5	Ladder Peak
9	600	150.00	378.8	Ladder Peak
10	700	150.00	324.7	Ladder Peak
11	1,000	150.00	227.3	Ladder Peak
12	2,000	150.00	113.6	Ladder Peak
13	3,000	150.00	75.8	Ladder Peak
14	7,000	150.00	32.5	Ladder Peak
15	10,380	75.00	10.9	Upper Marker

Assay Class: High Sensitivity DNA Assay  
 Data Path: C:\...ents and Settings\Bioanalyzer\2012-08-16\2012-08-16\_003.xad

Created: 8/16/2012 12:29:14 PM  
 Modified: 8/16/2012 1:11:36 PM

**Electropherogram Summary Continued ...**



**Setpoint Deviations for sample 1 : 2-10 Lib 1:2**

Height Threshold [FU] : 20

**Overall Results for sample 1 : 2-10 Lib 1:2**

Number of peaks found: 2                      Corr. Area 1: 1,415.4  
 Noise: 0.1

**Peak table for sample 1 : 2-10 Lib 1:2**

Peak	Size [bp]	Conc. [pg/μl]	Molarity [pmol/l]	Observations
1	35	125.00	5,411.3	Lower Marker
2	597	609.95	1,548.4	
3	626	819.53	1,984.2	
4	10,380	75.00	10.9	Upper Marker

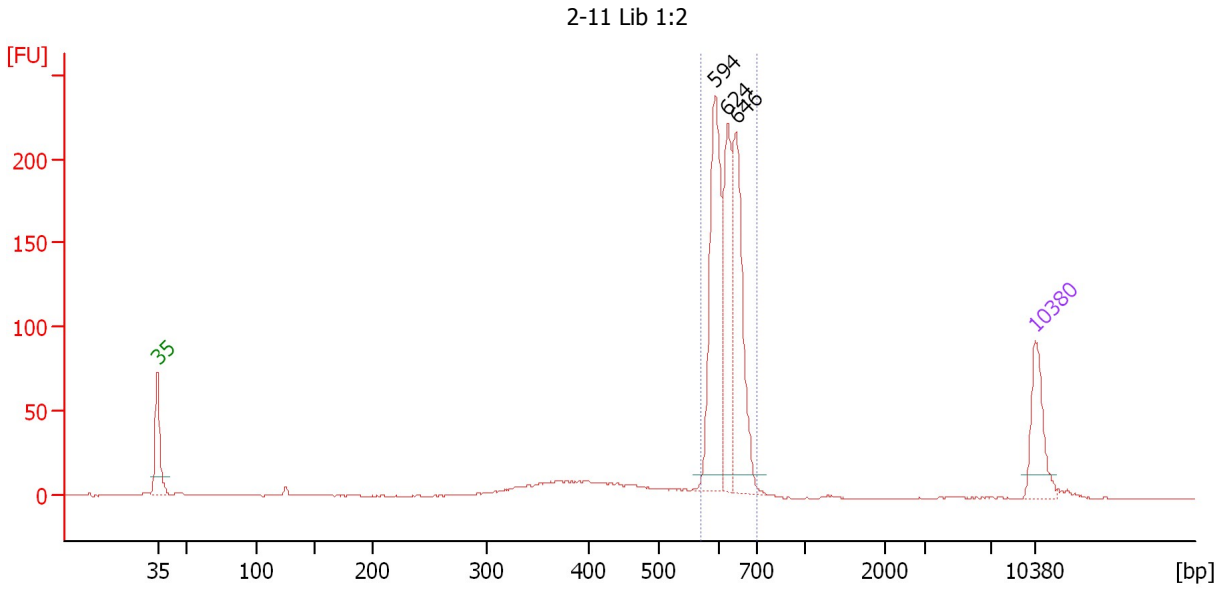
**Region table for sample 1 : 2-10 Lib 1:2**

From [bp]	To [bp]	Average Size [bp]	Molarity [pmol/l]	Conc. [pg/μl]	Corr. Area	% of Total	Size distribution in CV [%]	Color
568	710	623	3,466.3	1,423.50	1,415.4	81	4.5	Blue

Assay Class: High Sensitivity DNA Assay  
 Data Path: C:\...ents and Settings\Bioanalyzer\2012-08-16\2012-08-16\_003.xad

Created: 8/16/2012 12:29:14 PM  
 Modified: 8/16/2012 1:11:36 PM

**Electropherogram Summary Continued ...**



**Setpoint Deviations for sample 2 : 2-11 Lib 1:2**

Height Threshold [FU] : 10

**Overall Results for sample 2 : 2-11 Lib 1:2**

Number of peaks found: 3                      Corr. Area 1: 731.7  
 Noise: 0.1

**Peak table for sample 2 : 2-11 Lib 1:2**

Peak	Size [bp]	Conc. [pg/μl]	Molarity [pmol/l]	Observations
1	35	125.00	5,411.3	Lower Marker
2	594	297.83	759.6	
3	624	176.55	428.8	
4	646	251.74	590.2	
5	10,380	75.00	10.9	Upper Marker

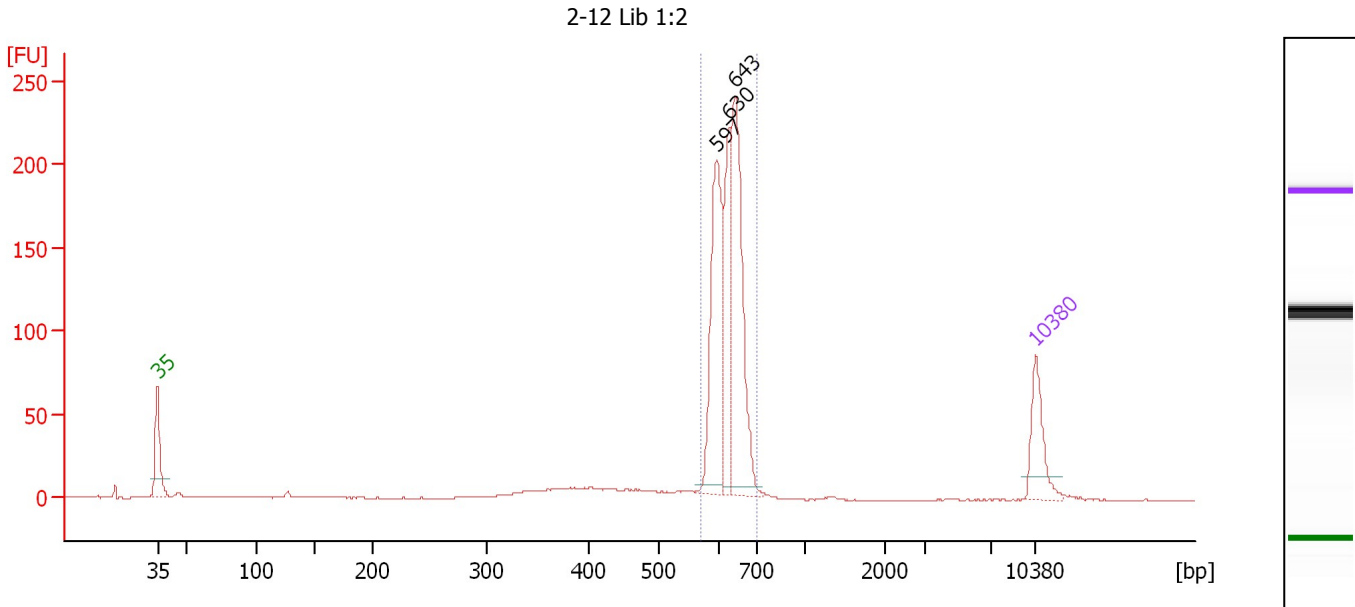
**Region table for sample 2 : 2-11 Lib 1:2**

From [bp]	To [bp]	Average Size [bp]	Molarity [pmol/l]	Conc. [pg/μl]	Corr. Area	% of Total	Size distribution in CV [%]	Color
569	700	623	1,812.5	743.63	731.7	77	4.5	Blue

Assay Class: High Sensitivity DNA Assay  
 Data Path: C:\...ents and Settings\Bioanalyzer\2012-08-16\2012-08-16\_003.xad

Created: 8/16/2012 12:29:14 PM  
 Modified: 8/16/2012 1:11:36 PM

**Electropherogram Summary Continued ...**



**Overall Results for sample 3 : 2-12 Lib 1:2**

Number of peaks found: 3                      Corr. Area 1: 695.0  
 Noise: 0.2

**Peak table for sample 3 : 2-12 Lib 1:2**

Peak	Size [bp]	Conc. [pg/μl]	Molarity [pmol/l]	Observations
1	35	125.00	5,411.3	Lower Marker
2	597	284.70	722.1	
3	630	166.26	400.1	
4	643	348.00	819.6	
5	10,380	75.00	10.9	Upper Marker

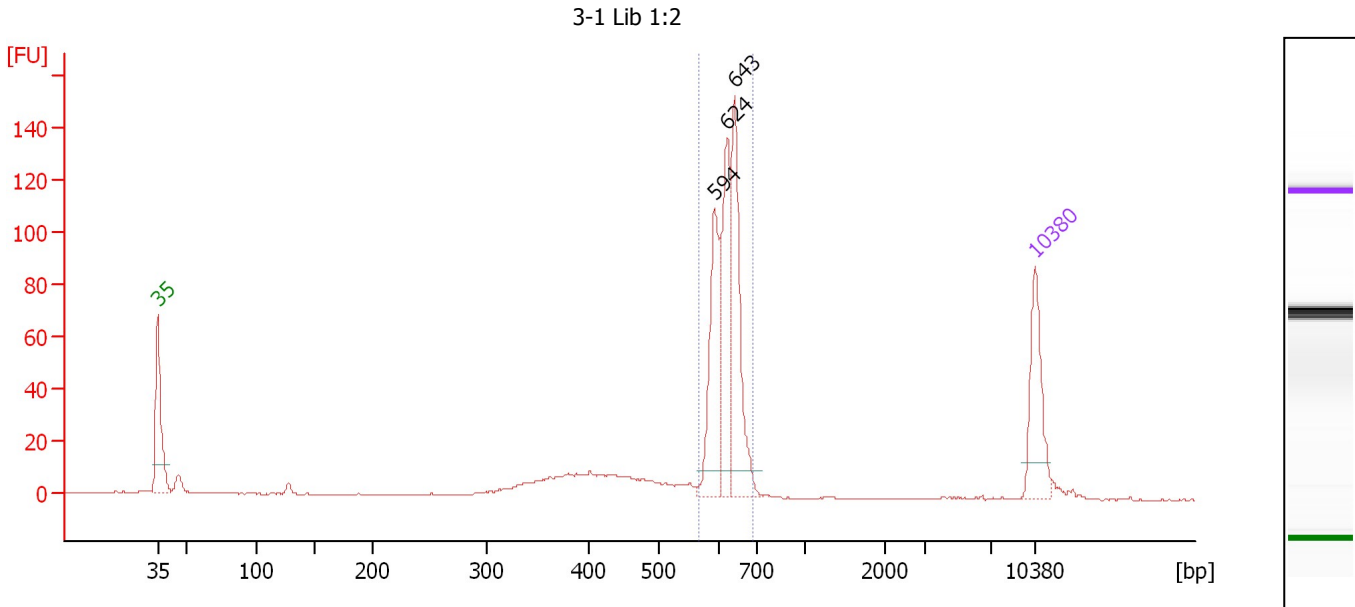
**Region table for sample 3 : 2-12 Lib 1:2**

From [bp]	To [bp]	Average Size [bp]	Molarity [pmol/l]	Conc. [pg/μl]	Corr. Area	% of Total	Size distribution in CV [%]	Color
571	701	626	1,970.0	813.26	695.0	83	4.4	Blue

Assay Class: High Sensitivity DNA Assay  
 Data Path: C:\...ents and Settings\Bioanalyzer\2012-08-16\2012-08-16\_003.xad

Created: 8/16/2012 12:29:14 PM  
 Modified: 8/16/2012 1:11:36 PM

**Electropherogram Summary Continued ...**



**Setpoint Deviations for sample 4 : 3-1 Lib 1:2**

Height Threshold [FU] : 10

**Overall Results for sample 4 : 3-1 Lib 1:2**

Number of peaks found: 3                      Corr. Area 1: 377.3  
 Noise: 0.2

**Peak table for sample 4 : 3-1 Lib 1:2**

Peak	Size [bp]	Conc. [pg/μl]	Molarity [pmol/l]	Observations
1	35	125.00	5,411.3	Lower Marker
2	594	138.51	353.0	
3	624	133.87	325.0	
4	643	174.39	411.0	
5	10,380	75.00	10.9	Upper Marker

**Region table for sample 4 : 3-1 Lib 1:2**

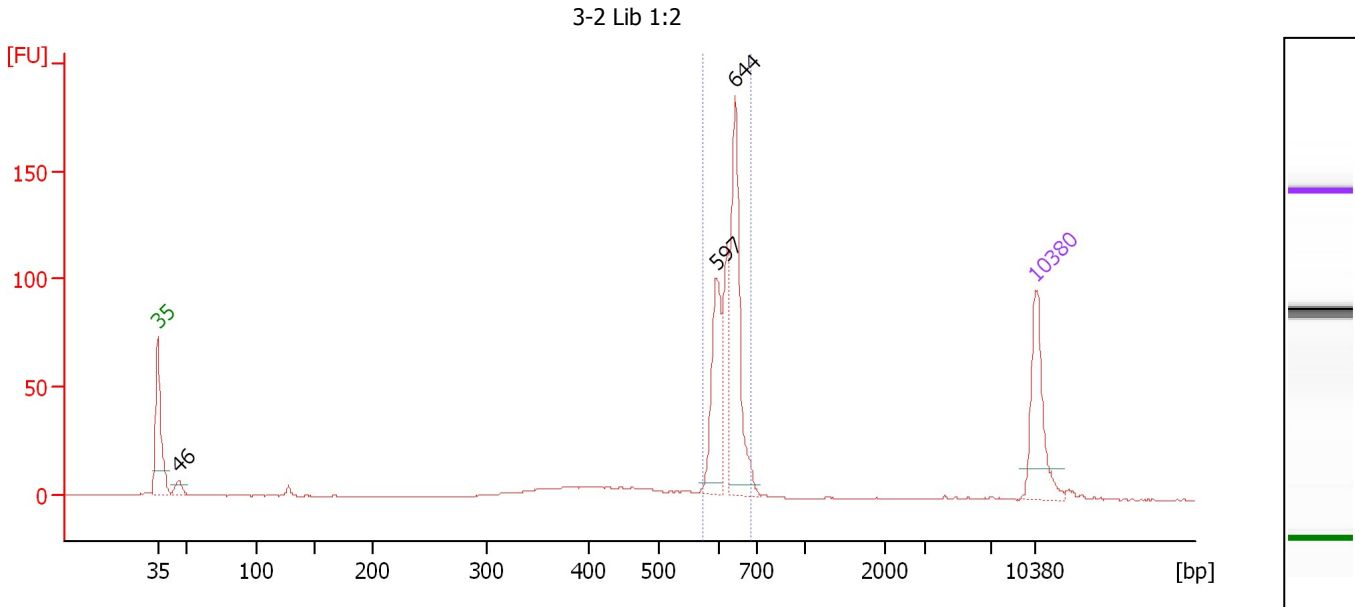
From [bp]	To [bp]	Average Size [bp]	Molarity [pmol/l]	Conc. [pg/μl]	Corr. Area	% of Total	Size distribution in CV [%]	Color
567	691	623	1,075.3	441.23	377.3	73	4.1	Blue



Assay Class: High Sensitivity DNA Assay  
 Data Path: C:\...ents and Settings\Bioanalyzer\2012-08-16\2012-08-16\_003.xad

Created: 8/16/2012 12:29:14 PM  
 Modified: 8/16/2012 1:11:36 PM

**Electropherogram Summary Continued ...**



**Overall Results for sample 5 : 3-2 Lib 1:2**

Number of peaks found: 3      Corr. Area 1: 353.2  
 Noise: 0.1

**Peak table for sample 5 : 3-2 Lib 1:2**

Peak	Size [bp]	Conc. [pg/μl]	Molarity [pmol/l]	Observations
1	35	125.00	5,411.3	Lower Marker
2	46	16.77	551.7	
3	597	106.97	271.6	
4	644	174.74	411.0	
5	10,380	75.00	10.9	Upper Marker

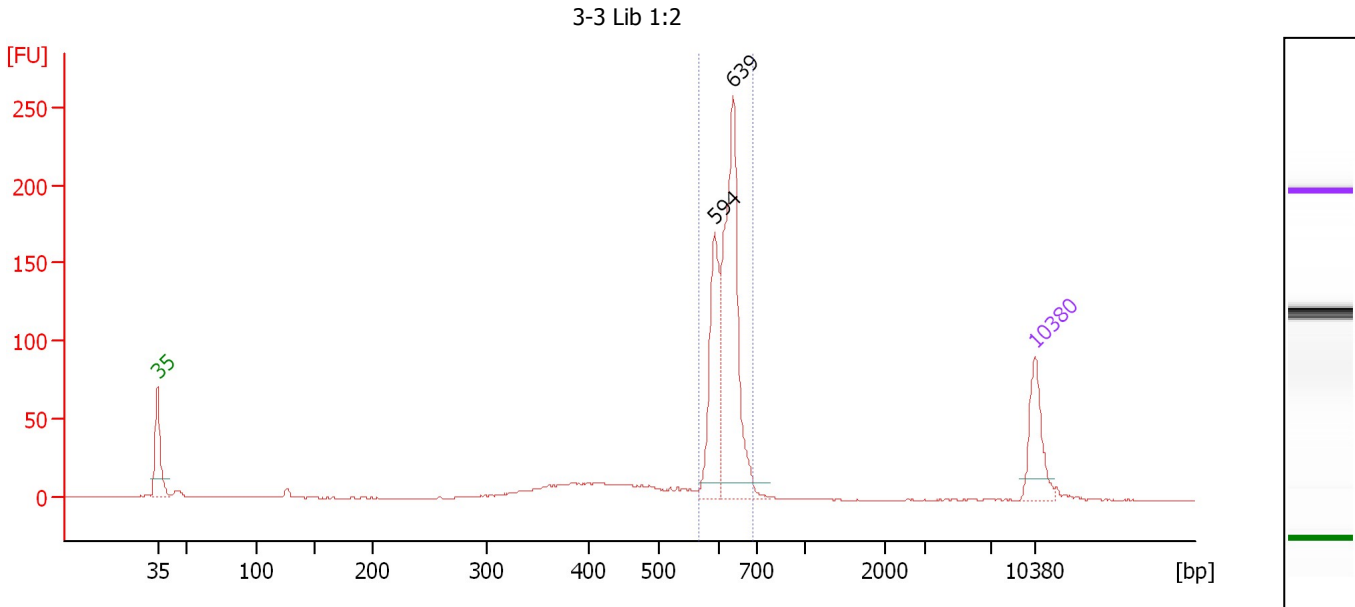
**Region table for sample 5 : 3-2 Lib 1:2**

From [bp]	To [bp]	Average Size [bp]	Molarity [pmol/l]	Conc. [pg/μl]	Corr. Area	% of Total	Size distribution in CV [%]	Color
573	686	626	856.1	353.34	353.2	75	3.9	Blue

Assay Class: High Sensitivity DNA Assay  
 Data Path: C:\...ents and Settings\Bioanalyzer\2012-08-16\2012-08-16\_003.xad

Created: 8/16/2012 12:29:14 PM  
 Modified: 8/16/2012 1:11:36 PM

**Electropherogram Summary Continued ...**



**Setpoint Deviations for sample 6 : 3-3 Lib 1:2**

Height Threshold [FU] : 10

**Overall Results for sample 6 : 3-3 Lib 1:2**

Number of peaks found: 2                      Corr. Area 1: 558.4  
 Noise: 0.1

**Peak table for sample 6 : 3-3 Lib 1:2**

Peak	Size [bp]	Conc. [pg/μl]	Molarity [pmol/l]	Observations
1	35	125.00	5,411.3	Lower Marker
2	594	180.16	459.7	
3	639	388.29	921.3	
4	10,380	75.00	10.9	Upper Marker

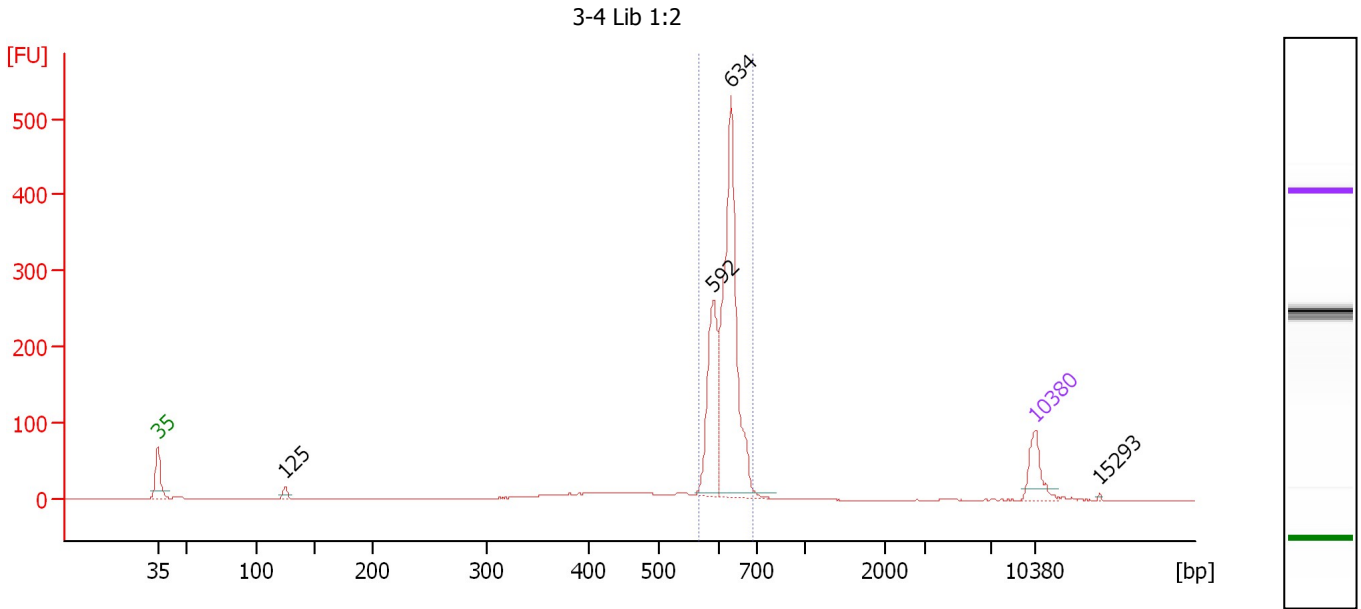
**Region table for sample 6 : 3-3 Lib 1:2**

From [bp]	To [bp]	Average Size [bp]	Molarity [pmol/l]	Conc. [pg/μl]	Corr. Area	% of Total	Size distribution in CV [%]	Color
567	689	621	1,373.5	562.27	558.4	75	4.0	Blue

Assay Class: High Sensitivity DNA Assay  
 Data Path: C:\...ents and Settings\Bioanalyzer\2012-08-16\2012-08-16\_003.xad

Created: 8/16/2012 12:29:14 PM  
 Modified: 8/16/2012 1:11:36 PM

**Electropherogram Summary Continued ...**



**Overall Results for sample 7 : 3-4 Lib 1:2**

Number of peaks found: 4      Corr. Area 1: 1,002.5  
 Noise: 0.2

**Peak table for sample 7 : 3-4 Lib 1:2**

Peak	Size [bp]	Conc. [pg/μl]	Molarity [pmol/l]	Observations
1	35	125.00	5,411.3	Lower Marker
2	125	21.88	265.7	
3	592	309.62	793.1	
4	634	756.72	1,808.5	
5	10,380	75.00	10.9	Upper Marker
6	15,293	0.00	0.0	

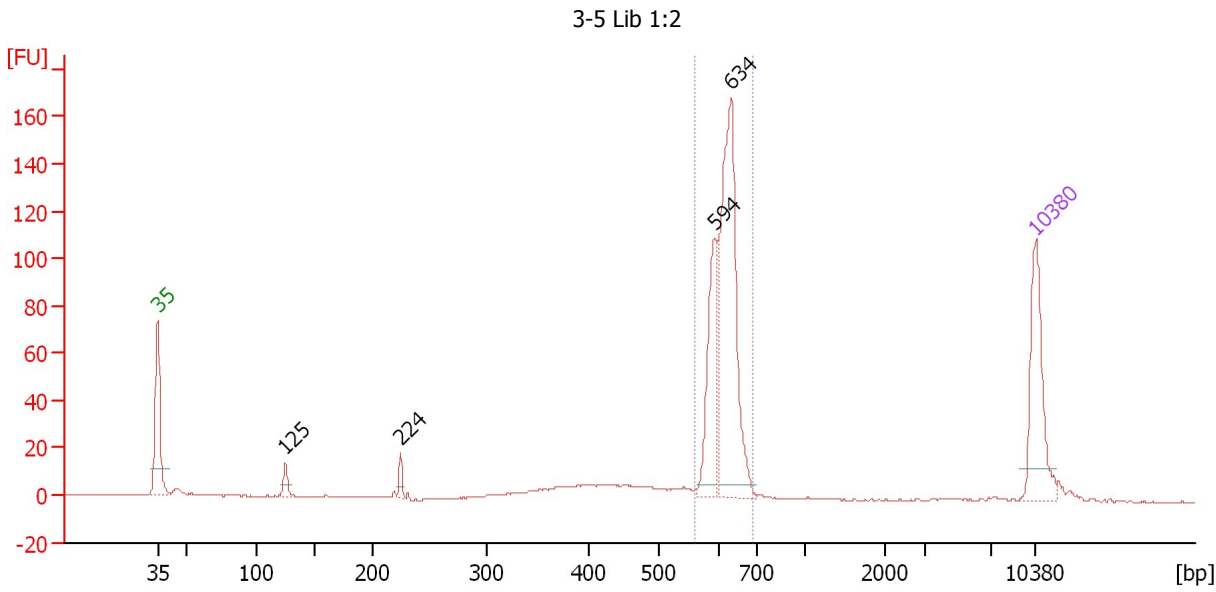
**Region table for sample 7 : 3-4 Lib 1:2**

From [bp]	To [bp]	Average Size [bp]	Molarity [pmol/l]	Conc. [pg/μl]	Corr. Area	% of Total	Size distribution in CV [%]	Color
566	689	620	2,646.5	1,081.65	1,002.5	83	4.1	Blue

Assay Class: High Sensitivity DNA Assay  
 Data Path: C:\...ents and Settings\Bioanalyzer\2012-08-16\2012-08-16\_003.xad

Created: 8/16/2012 12:29:14 PM  
 Modified: 8/16/2012 1:11:36 PM

**Electropherogram Summary Continued ...**



**Overall Results for sample 8 : 3-5 Lib 1:2**

Number of peaks found: 4                      Corr. Area 1: 393.2  
 Noise: 0.2

**Peak table for sample 8 : 3-5 Lib 1:2**

Peak	Size [bp]	Conc. [pg/μl]	Molarity [pmol/l]	Observations
1	35	125.00	5,411.3	Lower Marker
2	125	14.33	173.6	
3	224	10.33	69.8	
4	594	98.87	252.4	
5	634	239.82	572.9	
6	10,380	75.00	10.9	Upper Marker

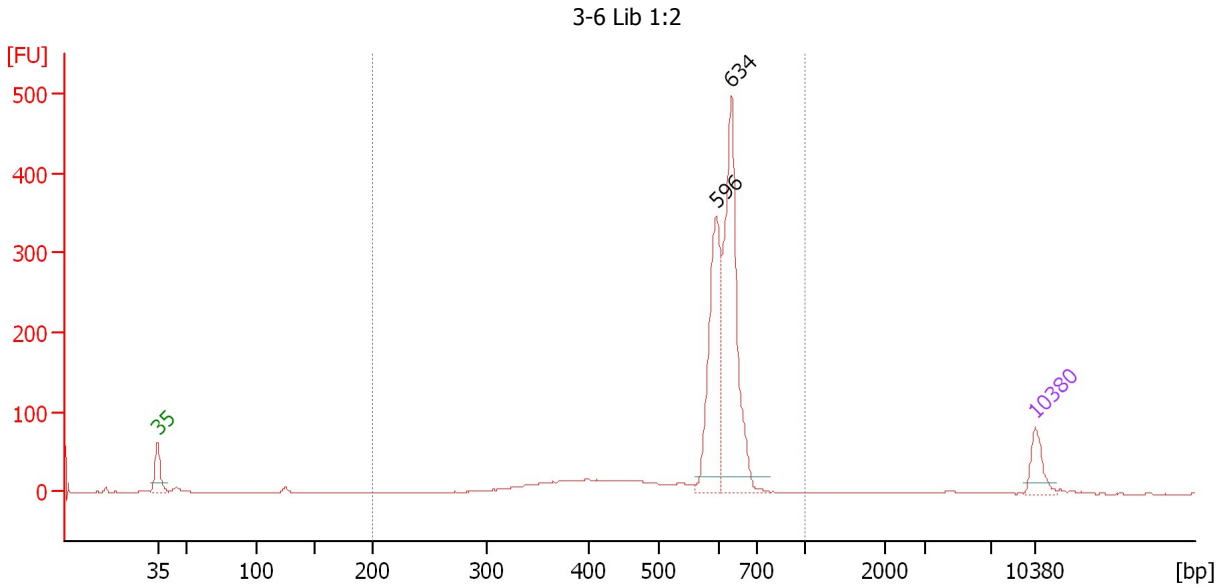
**Region table for sample 8 : 3-5 Lib 1:2**

From [bp]	To [bp]	Average Size [bp]	Molarity [pmol/l]	Conc. [pg/μl]	Corr. Area	% of Total	Size distribution in CV [%]	Color
561	689	617	854.7	347.65	393.2	72	4.0	Blue

Assay Class: High Sensitivity DNA Assay  
 Data Path: C:\...ents and Settings\Bioanalyzer\2012-08-16\2012-08-16\_003.xad

Created: 8/16/2012 12:29:14 PM  
 Modified: 8/16/2012 1:11:36 PM

**Electropherogram Summary Continued ...**



**Setpoint Deviations for sample 9 : 3-6 Lib 1:2**

Height Threshold [FU] : 20

**Overall Results for sample 9 : 3-6 Lib 1:2**

Number of peaks found: 2                      Corr. Area 1: 1,374.3  
 Noise: 0.2

**Peak table for sample 9 : 3-6 Lib 1:2**

Peak	Size [bp]	Conc. [pg/µl]	Molarity [pmol/l]	Observations
1	35	125.00	5,411.3	Lower Marker
2	596	539.01	1,369.2	
3	634	794.95	1,899.5	
4	10,380	75.00	10.9	Upper Marker

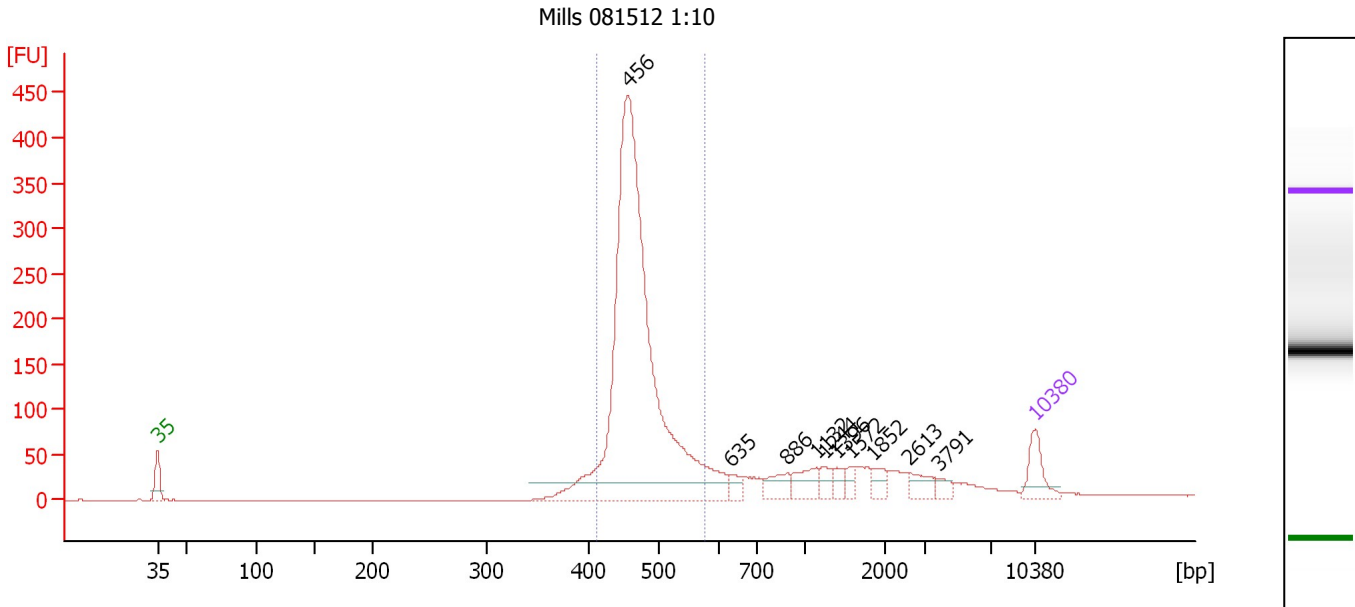
**Region table for sample 9 : 3-6 Lib 1:2**

From [bp]	To [bp]	Average Size [bp]	Molarity [pmol/l]	Conc. [pg/µl]	Corr. Area	% of Total	Size distribution in CV [%]	Color
200	1,000	585	4,666.2	1,715.13	1,374.3	92	14.6	Blue

Assay Class: High Sensitivity DNA Assay  
 Data Path: C:\...ents and Settings\Bioanalyzer\2012-08-16\2012-08-16\_003.xad

Created: 8/16/2012 12:29:14 PM  
 Modified: 8/16/2012 1:11:36 PM

**Electropherogram Summary Continued ...**



**Setpoint Deviations for sample 10 : Mills 081512 1:10**

Height Threshold [FU] : 20

**Overall Results for sample 10 : Mills 081512 1:10**

Number of peaks found: 10                      Corr. Area 1: 1,683.5  
 Noise: 0.2

**Peak table for sample 10 : Mills 081512 1:10**

Peak	Size [bp]	Conc. [pg/μl]	Molarity [pmol/l]	Observations
1	35	125.00	5,411.3	Lower Marker
2	456	2,231.35	7,416.1	
3	635	33.19	79.2	
4	886	65.69	112.3	
5	1,132	70.46	94.3	
6	1,244	39.10	47.6	
7	1,396	28.78	31.2	
8	1,572	23.64	22.8	
9	1,852	39.37	32.2	
10	2,613	47.19	27.4	
11	3,791	25.63	10.2	
12	10,380	75.00	10.9	Upper Marker

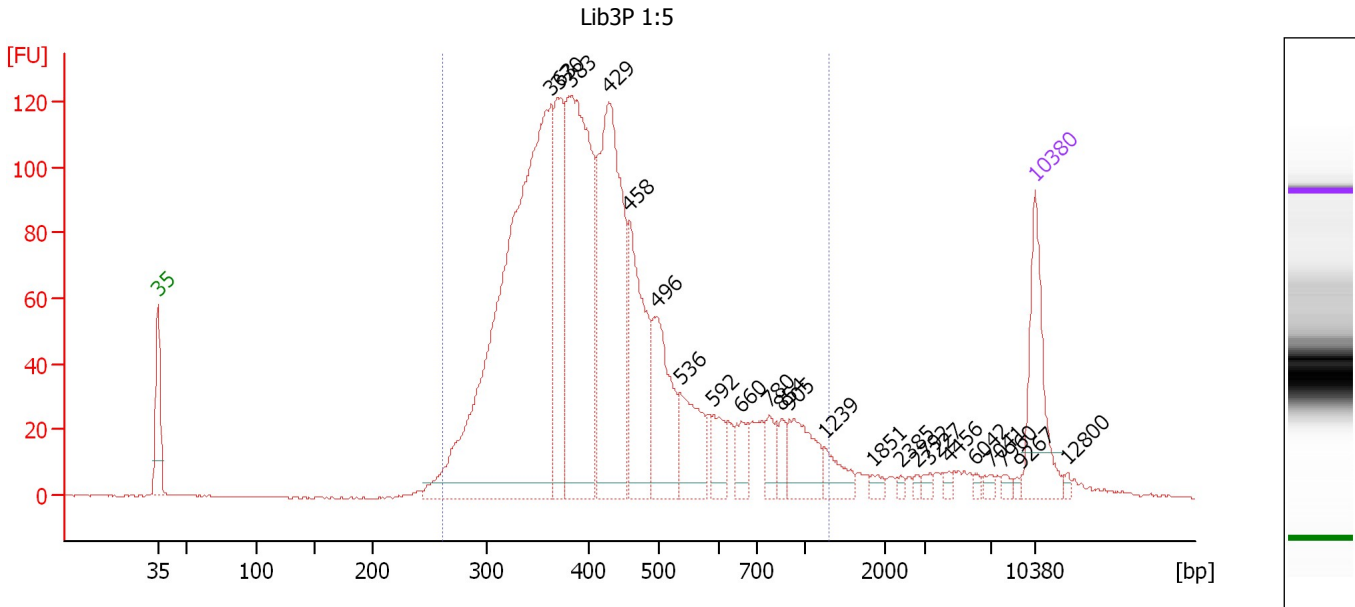
**Region table for sample 10 : Mills 081512 1:10**

From [bp]	To [bp]	Average Size [bp]	Molarity [pmol/l]	Conc. [pg/μl]	Corr. Area	% of Total	Size distribution in CV [%]	Color
412	577	471	6,404.2	1,984.24	1,683.5	67	6.8	Blue

Assay Class: High Sensitivity DNA Assay  
 Data Path: C:\...ents and Settings\Bioanalyzer\2012-08-16\2012-08-16\_003.xad

Created: 8/16/2012 12:29:14 PM  
 Modified: 8/16/2012 1:11:36 PM

**Electropherogram Summary Continued ...**



**Overall Results for sample 11 : Lib3P 1:5**

Number of peaks found: 23      Corr. Area 1: 2,209.0  
 Noise: 0.3

**Peak table for sample 11 : Lib3P 1:5**

Peak	Size [bp]	Conc. [pg/μl]	Molarity [pmol/l]	Observations
1	35	125.00	5,411.3	Lower Marker
2	363	809.36	3,378.5	
3	370	159.50	653.3	
4	383	387.04	1,532.6	
5	429	338.85	1,197.8	
6	458	157.02	519.9	
7	496	115.53	353.2	
8	536	75.56	213.6	
9	592	31.10	79.6	
10	660	27.54	63.2	
11	780	23.98	46.6	
12	854	15.39	27.3	
13	905	58.07	97.2	
14	1,239	23.88	29.2	
15	1,851	6.66	5.5	
16	2,385	3.22	2.0	
17	2,792	3.38	1.8	
18	3,227	4.91	2.3	
19	4,456	5.06	1.7	
20	6,042	3.48	0.9	
21	7,041	4.89	1.1	
22	7,960	4.26	0.8	
23	9,267	2.83	0.5	
24	10,380	75.00	10.9	Upper Marker
25	12,800	0.00	0.0	

Assay Class: High Sensitivity DNA Assay  
Data Path: C:\...ents and Settings\Bioanalyzer\2012-08-16\2012-08-16\_003.xad

Created: 8/16/2012 12:29:14 PM  
Modified: 8/16/2012 1:11:36 PM

**Electropherogram Summary Continued ...**

... Region table for sample 11 : Lib3P 1:5

From [bp]	To [bp]	Average Size [bp]	Molarity [pmol/l]	Conc. [pg/μl]	Corr. Area	% of Total	Size distribution in CV [%]	Color
260	1,291	446	8,836.1	2,330.39	2,209.0	93	36.2	■



Assay Class: High Sensitivity DNA Assay  
Data Path: C:\...ents and Settings\Bioanalyzer\2012-08-16\2012-08-16\_003.xad

Created: 8/16/2012 12:29:14 PM  
Modified: 8/16/2012 1:11:36 PM

**Gel Image**

