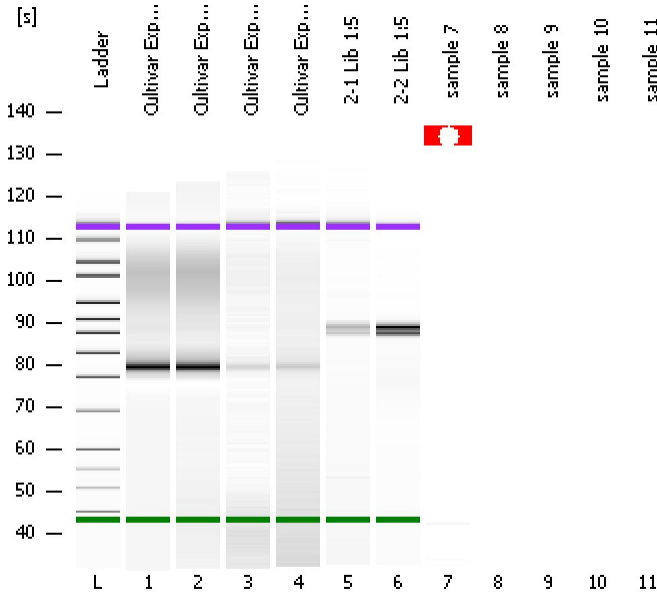


Assay Class: High Sensitivity DNA Assay  
Data Path: C:\...ents and Settings\Bioanalyzer\2012-08-16\2012-08-16\_004.xad

Created: 8/16/2012 1:16:37 PM  
Modified: 8/16/2012 1:44:57 PM

**Electrophoresis File Run Summary**



Instrument Information:

Instrument Name: DE13701086      Firmware: C.01.069  
Serial#: DE13701086      Type: G2938B

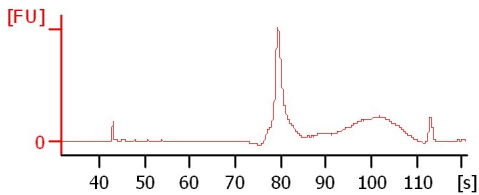
Assay Information:

Assay Origin Path: C:\Program Files\Agilent\2100 bioanalyzer\2100 expert\assays\dsDNA\High Sensitivity DNA.xsy  
Assay Class: High Sensitivity DNA Assay  
Version: 1.03  
Assay Comments: Copyright © 2003-2010 Agilent Technologies

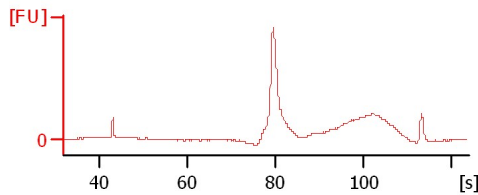
Chip Information:

Chip Lot #:   
Reagent Kit Lot #:   
Chip Comments:

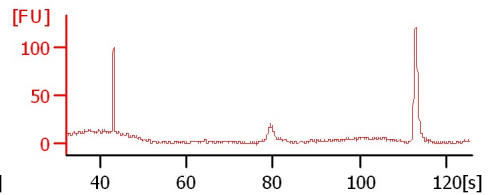
**Cultivar Exp3 - Pooled 1x-1**



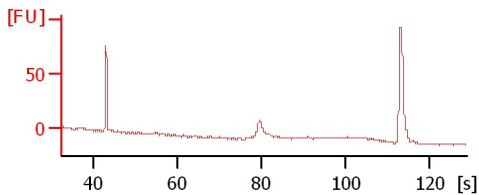
**Cultivar Exp3 - Pooled 1x-2**



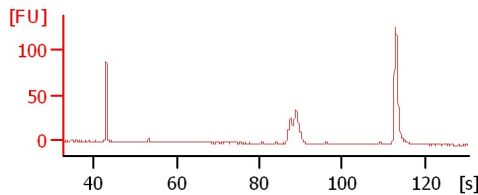
**Cultivar Exp3 - Pooled 1:20-1**



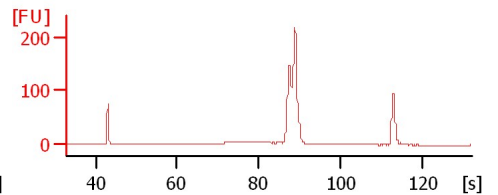
**Cultivar Exp3 - Pooled 1:20-2**



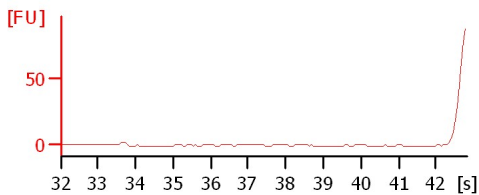
**2-1 Lib 1:5**



**2-2 Lib 1:5**



**sample 7**



Assay Class: High Sensitivity DNA Assay  
 Data Path: C:\...ents and Settings\Bioanalyzer\2012-08-16\2012-08-16\_004.xad

Created: 8/16/2012 1:16:37 PM  
 Modified: 8/16/2012 1:44:57 PM

**Electrophoresis File Run Summary (Chip Summary)**

Sample Name	Sample Comment	Rest. Digest	Status	Observation	Result Label	Result Color
Cultivar Exp3 - Pooled 1x-1		<input type="checkbox"/>	✓			
Cultivar Exp3 - Pooled 1x-2		<input type="checkbox"/>	✓			
Cultivar Exp3 - Pooled 1:20-1		<input type="checkbox"/>	✓			
Cultivar Exp3 - Pooled 1:20-2		<input type="checkbox"/>	✓			
2-1 Lib 1:5		<input type="checkbox"/>	✓			
2-2 Lib 1:5		<input type="checkbox"/>	✓			
sample 7		<input type="checkbox"/>	✗			
sample 8		<input type="checkbox"/>	✗			
sample 9		<input type="checkbox"/>	✗			
sample 10		<input type="checkbox"/>	✗			
sample 11		<input type="checkbox"/>	✗			
Ladder		<input type="checkbox"/>	✓			

**Chip Lot #**

**Reagent Kit Lot #**

**Chip Comments :**

Assay Class: High Sensitivity DNA Assay  
Data Path: C:\...ents and Settings\Bioanalyzer\2012-08-16\2012-08-16\_004.xad

Created: 8/16/2012 1:16:37 PM  
Modified: 8/16/2012 1:44:57 PM

**Electrophoresis Assay Details**

**General Analysis Settings**

Number of Available Sample and Ladder Wells (Max.) : 12  
Minimum Visible Range [s] : 32  
Maximum Visible Range [s] : 138  
Start Analysis Time Range [s] : 33  
End Analysis Time Range [s] : 137.5  
Ladder Concentration [pg/μl] : 1950  
Uses Standard Area for Ladder Fragments  
Lower Marker Concentration [pg/μl] : 125  
Upper Marker Concentration [pg/μl] : 75  
Used Upper Marker for Quantitation  
Standard Curve Fit is Point to Point  
Show Data Aligned to Lower and Upper Marker

**Integrator Settings**

Integration Start Time [s] : 33.05  
Integration End Time [s] : 137  
Slope Threshold : 0.8  
Height Threshold [FU] : 5  
Area Threshold : 0.1  
Width Threshold [s] : 0.6  
Baseline Plateau [s] : 0.5

**Filter Settings**

Filter Width [s] : 0.5  
Polynomial Order : 4

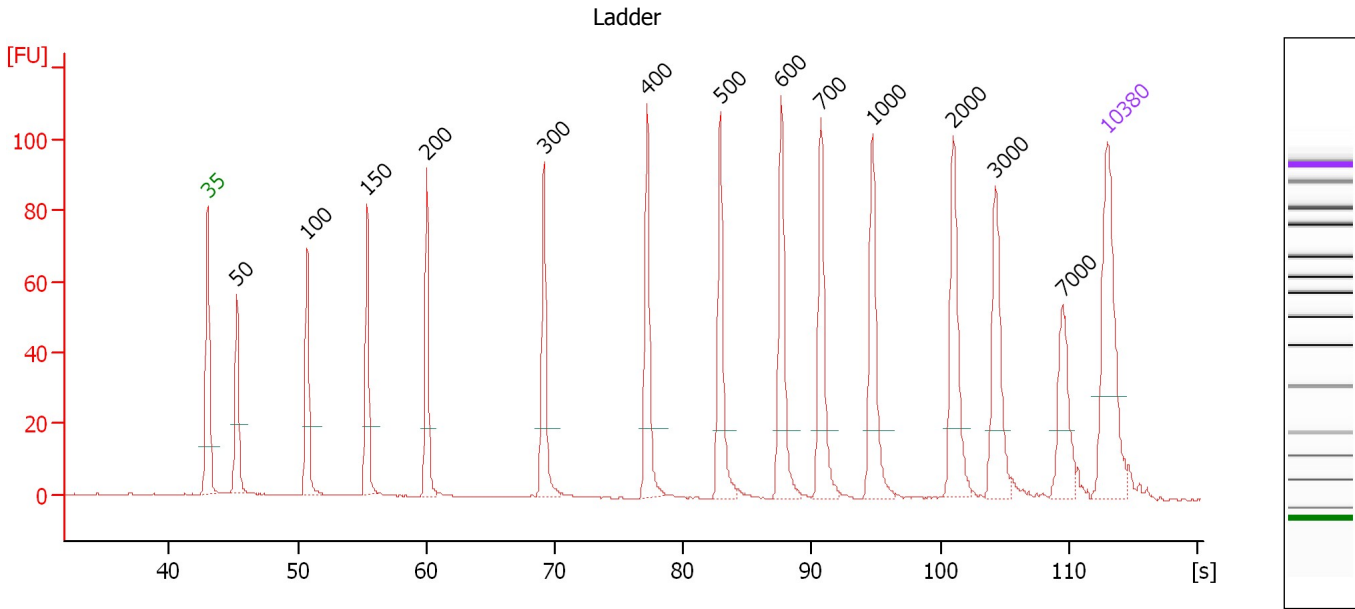
**Ladder**

Ladder Peak	Size	Area
1	35	160
2	50	210
3	100	208
4	150	221
5	200	242
6	300	270
7	400	305
8	500	306
9	600	336
10	700	321
11	1000	366
12	2000	413
13	3000	411
14	7000	400
15	10380	214

Assay Class: High Sensitivity DNA Assay  
 Data Path: C:\...ents and Settings\Bioanalyzer\2012-08-16\2012-08-16\_004.xad

Created: 8/16/2012 1:16:37 PM  
 Modified: 8/16/2012 1:44:57 PM

**Electropherogram Summary**



**Overall Results for Ladder**

Noise: 0.1

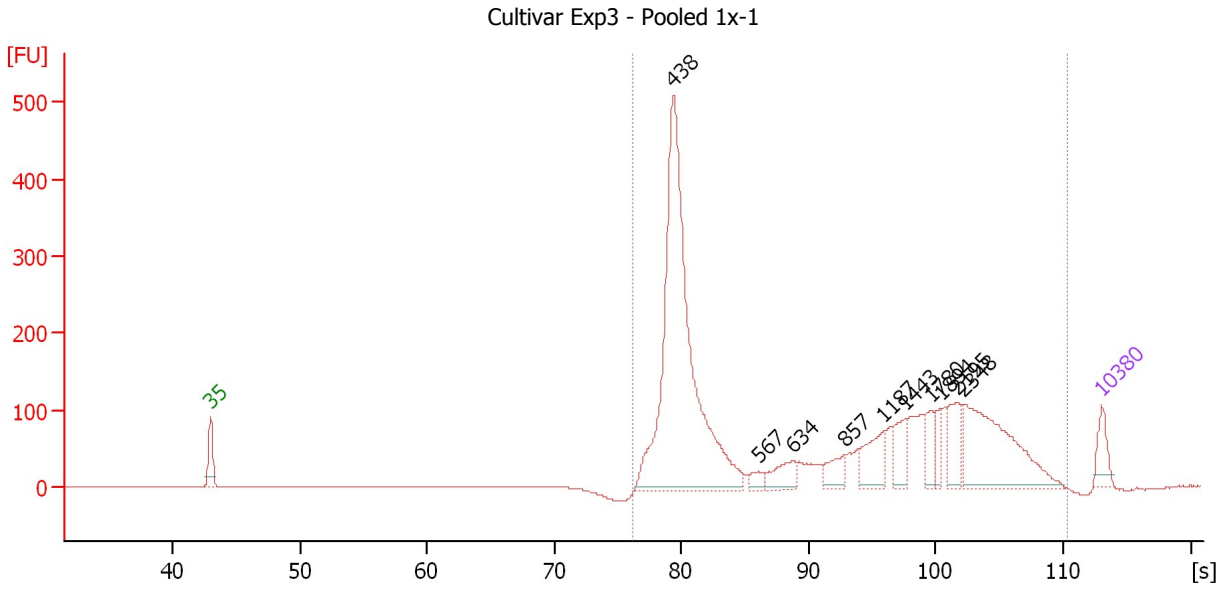
**Peak table for Ladder**

Peak	Size [bp]	Conc. [pg/μl]	Molarity [pmol/l]	Observations
1	35	125.00	5,411.3	Lower Marker
2	50	150.00	4,545.5	Ladder Peak
3	100	150.00	2,272.7	Ladder Peak
4	150	150.00	1,515.2	Ladder Peak
5	200	150.00	1,136.4	Ladder Peak
6	300	150.00	757.6	Ladder Peak
7	400	150.00	568.2	Ladder Peak
8	500	150.00	454.5	Ladder Peak
9	600	150.00	378.8	Ladder Peak
10	700	150.00	324.7	Ladder Peak
11	1,000	150.00	227.3	Ladder Peak
12	2,000	150.00	113.6	Ladder Peak
13	3,000	150.00	75.8	Ladder Peak
14	7,000	150.00	32.5	Ladder Peak
15	10,380	75.00	10.9	Upper Marker

Assay Class: High Sensitivity DNA Assay  
 Data Path: C:\...ents and Settings\Bioanalyzer\2012-08-16\2012-08-16\_004.xad

Created: 8/16/2012 1:16:37 PM  
 Modified: 8/16/2012 1:44:57 PM

**Electropherogram Summary Continued ...**



**Overall Results for sample 1 : Cultivar Exp3 - Pooled 1x-1**

Number of peaks found: 10                      Corr. Area 1: 3,018.2  
 Noise: 0.2

**Peak table for sample 1 : Cultivar Exp3 - Pooled 1x-1**

Peak	Size [bp]	Conc. [pg/μl]	Molarity [pmol/l]	Observations
1	35	125.00	5,411.3	Lower Marker
2	438	1,988.48	6,871.3	
3	567	39.81	106.5	
4	634	99.74	238.2	
5	857	82.61	146.0	
6	1,187	149.98	191.4	
7	1,443	104.12	109.3	
8	1,780	74.88	63.8	
9	1,894	58.66	46.9	
10	2,195	118.25	81.6	
11	2,348	449.95	290.3	
12	10,380	75.00	10.9	Upper Marker

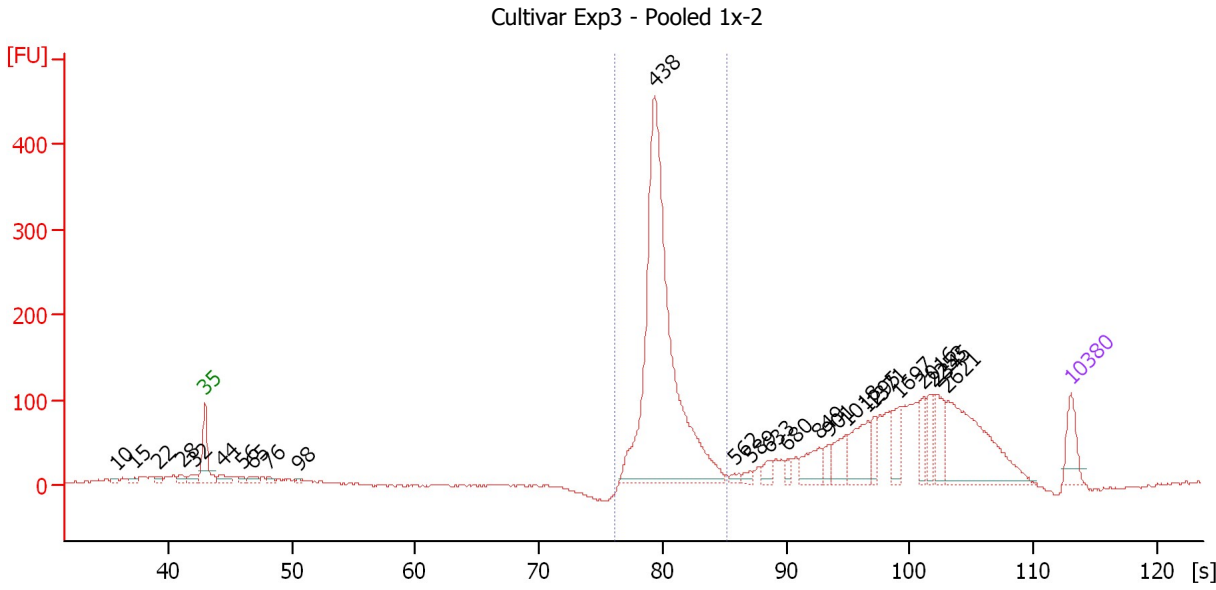
**Region table for sample 1 : Cultivar Exp3 - Pooled 1x-1**

From [bp]	To [bp]	Average Size [bp]	Molarity [pmol/l]	Conc. [pg/μl]	Corr. Area	% of Total	Size distribution in CV [%]	Color
387	7,771	1,353	8,014.2	3,371.43	3,018.2	100	93.4	Blue

Assay Class: High Sensitivity DNA Assay  
 Data Path: C:\...ents and Settings\Bioanalyzer\2012-08-16\2012-08-16\_004.xad

Created: 8/16/2012 1:16:37 PM  
 Modified: 8/16/2012 1:44:57 PM

**Electropherogram Summary Continued ...**



**Overall Results for sample 2 : Cultivar Exp3 - Pooled 1x-2**

Number of peaks found: 25                      Corr. Area 1: 1,342.8  
 Noise: 1.2

**Peak table for sample 2 : Cultivar Exp3 - Pooled 1x-2**

Peak	Size [bp]	Conc. [pg/μl]	Molarity [pmol/l]	Observations
1	10	0.00	0.0	
2	15	0.00	0.0	
3	22	0.00	0.0	
4	28	0.00	0.0	
5	32	0.00	0.0	
6	35	125.00	5,411.3	Lower Marker
7	44	48.13	1,659.2	
8	56	18.00	484.0	
9	65	31.36	730.1	
10	76	18.75	374.8	
11	98	9.34	143.9	
12	438	1,688.19	5,839.6	
13	562	16.37	44.2	
14	589	17.07	43.9	
15	633	32.98	79.0	
16	680	21.77	48.5	
17	849	86.12	153.6	
18	901	34.65	58.3	
19	1,018	76.50	113.9	
20	1,295	129.42	151.4	
21	1,371	46.25	51.1	
22	1,697	75.97	67.8	
23	2,016	56.77	42.7	
24	2,253	58.80	39.5	
25	2,345	73.68	47.6	
26	2,621	349.34	202.0	

Assay Class: High Sensitivity DNA Assay  
 Data Path: C:\...ents and Settings\Bioanalyzer\2012-08-16\2012-08-16\_004.xad

Created: 8/16/2012 1:16:37 PM  
 Modified: 8/16/2012 1:44:57 PM

### Electropherogram Summary Continued ...

#### ... Peak table for sample 2 : Cultivar Exp3 - Pooled 1x-2

Peak	Size [bp]	Conc. [pg/μl]	Molarity [pmol/l]	Observations
27	10,380	75.00	10.9	Upper Marker

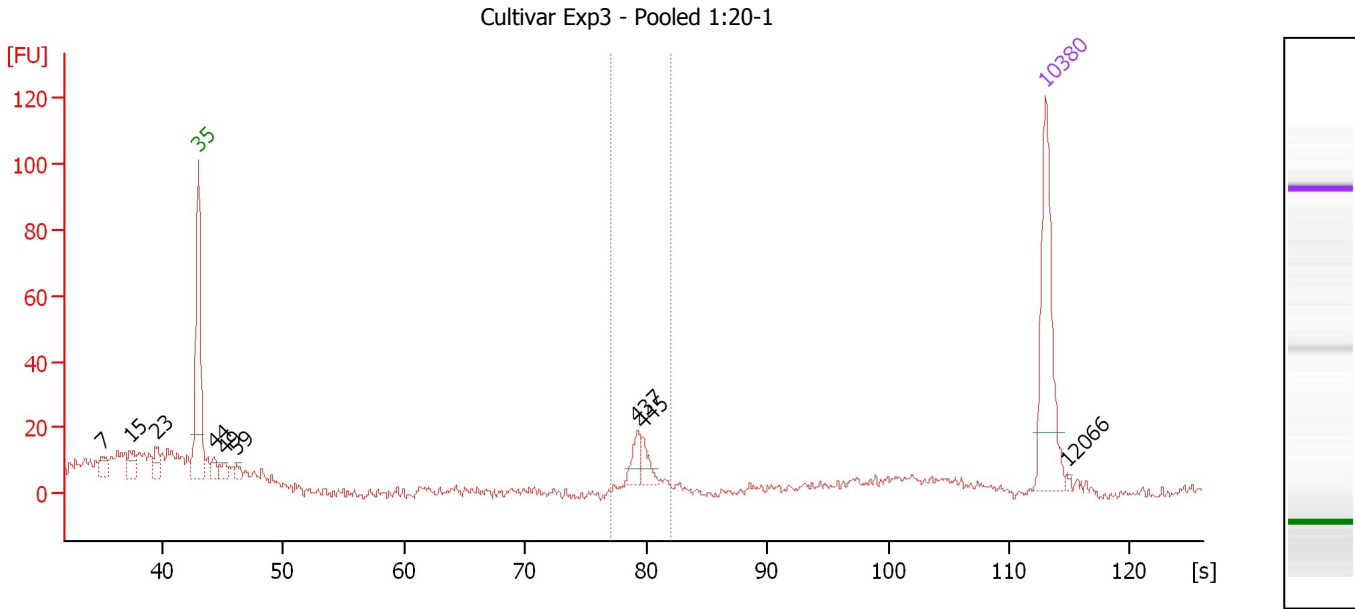
#### Region table for sample 2 : Cultivar Exp3 - Pooled 1x-2

From [bp]	To [bp]	Average Size [bp]	Molarity [pmol/l]	Conc. [pg/μl]	Corr. Area	% of Total	Size distribution in CV [%]	Color
386	548	450	5,583.6	1,654.11	1,342.8	46	5.8	

Assay Class: High Sensitivity DNA Assay  
 Data Path: C:\...ents and Settings\Bioanalyzer\2012-08-16\2012-08-16\_004.xad

Created: 8/16/2012 1:16:37 PM  
 Modified: 8/16/2012 1:44:57 PM

**Electropherogram Summary Continued ...**



**Overall Results for sample 3 : Cultivar Exp3 - Pooled 1:20-1**

Number of peaks found: 9                      Corr. Area 1: 24.7  
 Noise: 1.6

**Peak table for sample 3 : Cultivar Exp3 - Pooled 1:20-1**

Peak	Size [bp]	Conc. [pg/μl]	Molarity [pmol/l]	Observations
1	7	0.00	0.0	
2	15	0.00	0.0	
3	23	0.00	0.0	
4	35	125.00	5,411.3	Lower Marker
5	44	11.93	412.4	
6	49	12.11	371.0	
7	59	8.18	211.6	
8	437	16.46	57.1	
9	445	12.95	44.1	
10	10,380	75.00	10.9	Upper Marker
11	12,066	0.00	0.0	

**Region table for sample 3 : Cultivar Exp3 - Pooled 1:20-1**

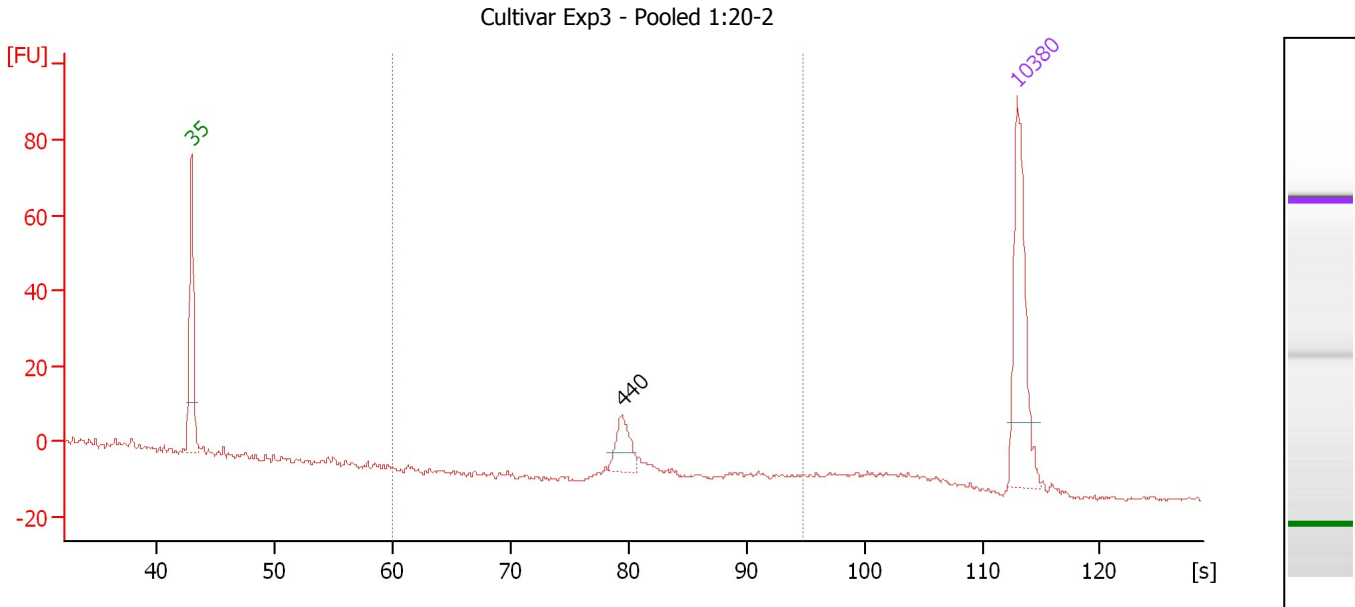
From [bp]	To [bp]	Average Size [bp]	Molarity [pmol/l]	Conc. [pg/μl]	Corr. Area	% of Total	Size distribution in CV [%]	Color
399	484	441	80.5	23.44	24.7	18	2.0	Blue



Assay Class: High Sensitivity DNA Assay  
 Data Path: C:\...ents and Settings\Bioanalyzer\2012-08-16\2012-08-16\_004.xad

Created: 8/16/2012 1:16:37 PM  
 Modified: 8/16/2012 1:44:57 PM

**Electropherogram Summary Continued ...**



**Overall Results for sample 4 : Cultivar Exp3 - Pooled 1:20-2**

Number of peaks found: 1                      Corr. Area 1: 32.6  
 Noise: 0.5

**Peak table for sample 4 : Cultivar Exp3 - Pooled 1:20-2**

Peak	Size [bp]	Conc. [pg/μl]	Molarity [pmol/l]	Observations
1	35	125.00	5,411.3	Lower Marker
2	440	27.42	94.4	
3	10,380	75.00	10.9	Upper Marker

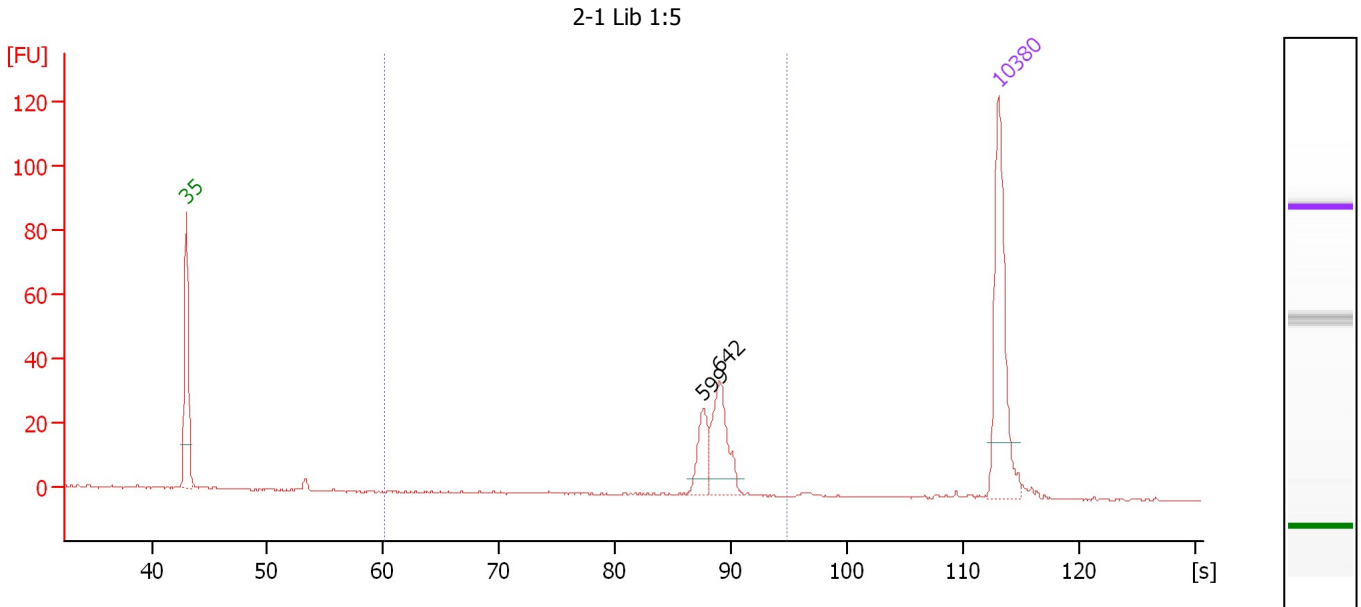
**Region table for sample 4 : Cultivar Exp3 - Pooled 1:20-2**

From [bp]	To [bp]	Average Size [bp]	Molarity [pmol/l]	Conc. [pg/μl]	Corr. Area	% of Total	Size distribution in CV [%]	Color
200	1,000	485	105.0	32.18	32.6	55	24.1	Blue

Assay Class: High Sensitivity DNA Assay  
 Data Path: C:\...ents and Settings\Bioanalyzer\2012-08-16\2012-08-16\_004.xad

Created: 8/16/2012 1:16:37 PM  
 Modified: 8/16/2012 1:44:57 PM

**Electropherogram Summary Continued ...**



**Overall Results for sample 5 : 2-1 Lib 1:5**

Number of peaks found: 2                      Corr. Area 1: 96.6  
 Noise: 0.2

**Peak table for sample 5 : 2-1 Lib 1:5**

Peak	Size [bp]	Conc. [pg/μl]	Molarity [pmol/l]	Observations
1	35	125.00	5,411.3	Lower Marker
2	599	26.87	68.0	
3	642	52.06	122.9	
4	10,380	75.00	10.9	Upper Marker

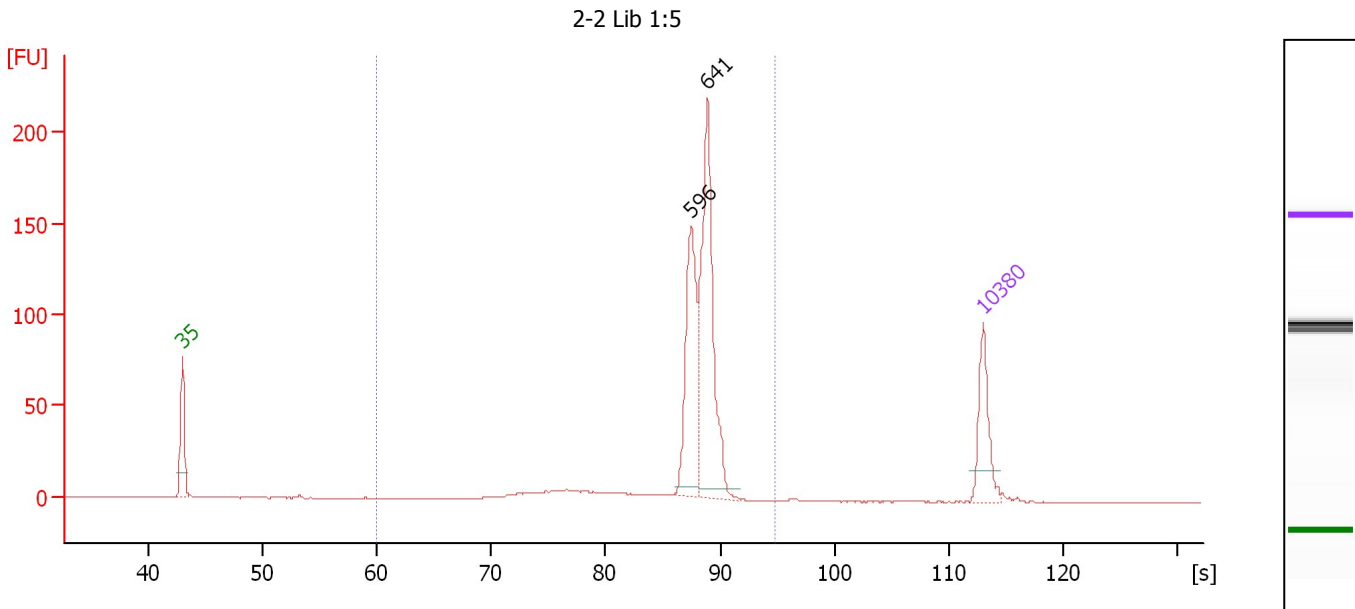
**Region table for sample 5 : 2-1 Lib 1:5**

From [bp]	To [bp]	Average Size [bp]	Molarity [pmol/l]	Conc. [pg/μl]	Corr. Area	% of Total	Size distribution in CV [%]	Color
200	1,000	630	192.1	79.59	96.6	84	5.5	Blue

Assay Class: High Sensitivity DNA Assay  
 Data Path: C:\...ents and Settings\Bioanalyzer\2012-08-16\2012-08-16\_004.xad

Created: 8/16/2012 1:16:37 PM  
 Modified: 8/16/2012 1:44:57 PM

**Electropherogram Summary Continued ...**



**Overall Results for sample 6 : 2-2 Lib 1:5**

Number of peaks found: 2                      Corr. Area 1: 569.2  
 Noise: 0.2

**Peak table for sample 6 : 2-2 Lib 1:5**

Peak	Size [bp]	Conc. [pg/μl]	Molarity [pmol/l]	Observations
1	35	125.00	5,411.3	Lower Marker
2	596	208.90	530.7	
3	641	336.66	795.2	
4	10,380	75.00	10.9	Upper Marker

**Region table for sample 6 : 2-2 Lib 1:5**

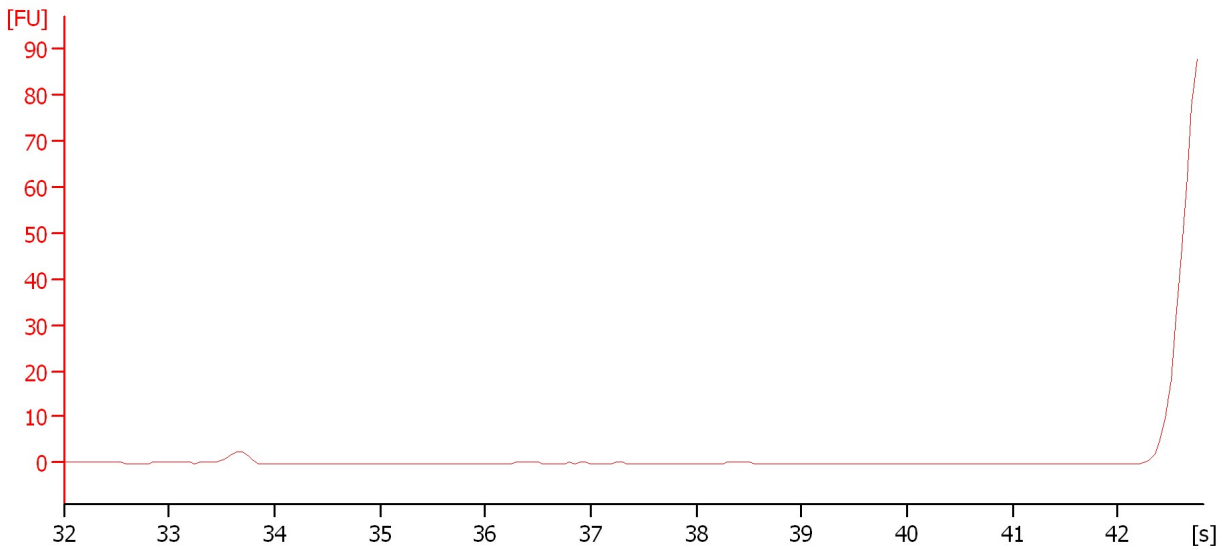
From [bp]	To [bp]	Average Size [bp]	Molarity [pmol/l]	Conc. [pg/μl]	Corr. Area	% of Total	Size distribution in CV [%]	Color
200	1,000	603	1,679.7	645.36	569.2	98	12.2	Blue

Assay Class: High Sensitivity DNA Assay  
Data Path: C:\...ents and Settings\Bioanalyzer\2012-08-16\2012-08-16\_004.xad

Created: 8/16/2012 1:16:37 PM  
Modified: 8/16/2012 1:44:57 PM

**Electropherogram Summary Continued ...**

sample 7



**Setpoint Deviations for sample 7 : sample 7**

End Analysis Time Range [s] : 42.8

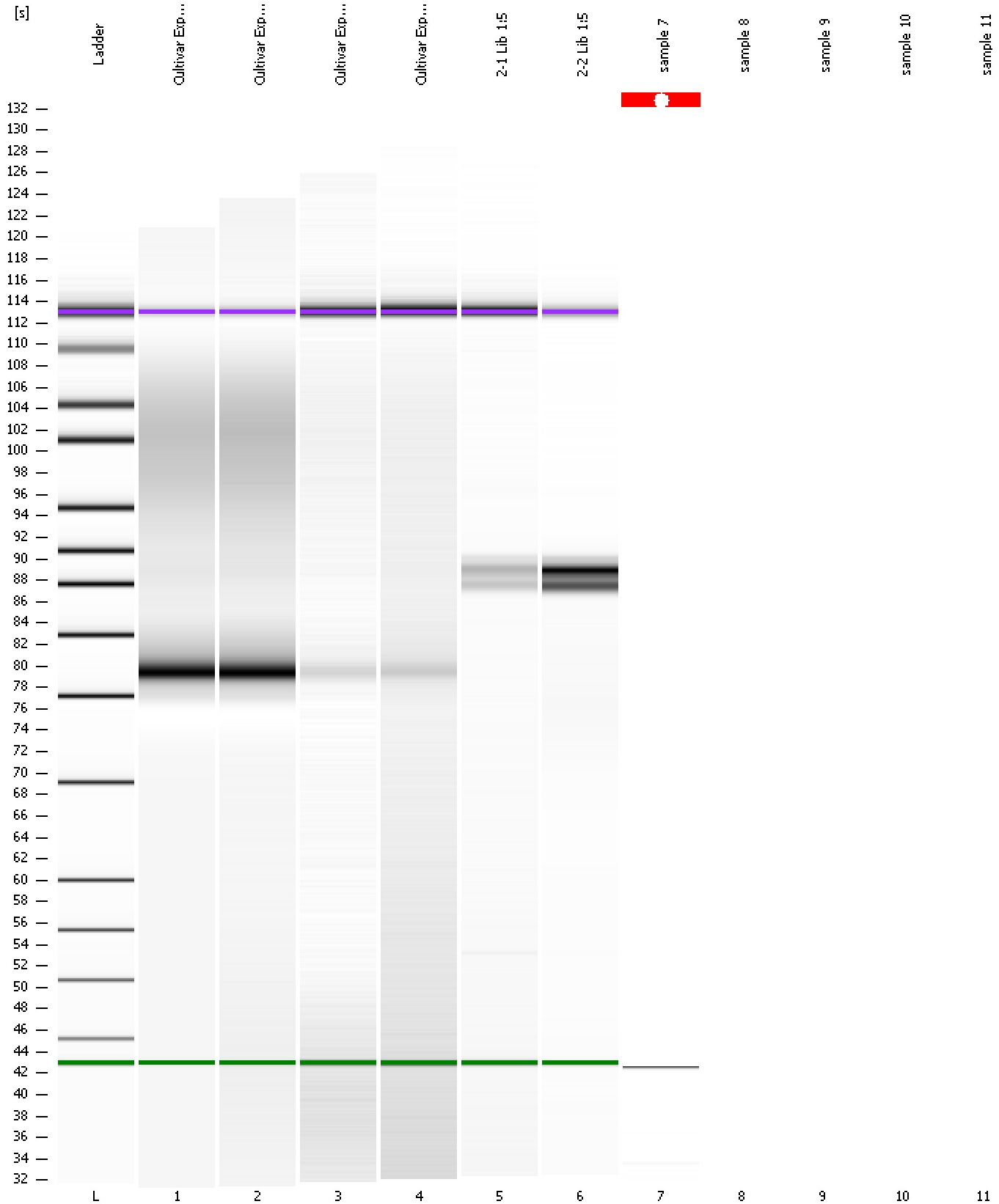
**Overall Results for sample 7 : sample 7**

Noise: 0.1

Assay Class: High Sensitivity DNA Assay  
Data Path: C:\...ents and Settings\Bioanalyzer\2012-08-16\2012-08-16\_004.xad

Created: 8/16/2012 1:16:37 PM  
Modified: 8/16/2012 1:44:57 PM

**Gel Image**



Assay Class: High Sensitivity DNA Assay  
Data Path: C:\...ents and Settings\Bioanalyzer\2012-08-16\2012-08-16\_004.xad

Created: 8/16/2012 1:16:37 PM  
Modified: 8/16/2012 1:44:57 PM

**Invalid Samples**

Sample 8 has not been run, no results available.

Sample 9 has not been run, no results available.

Sample 10 has not been run, no results available.

Sample 11 has not been run, no results available.