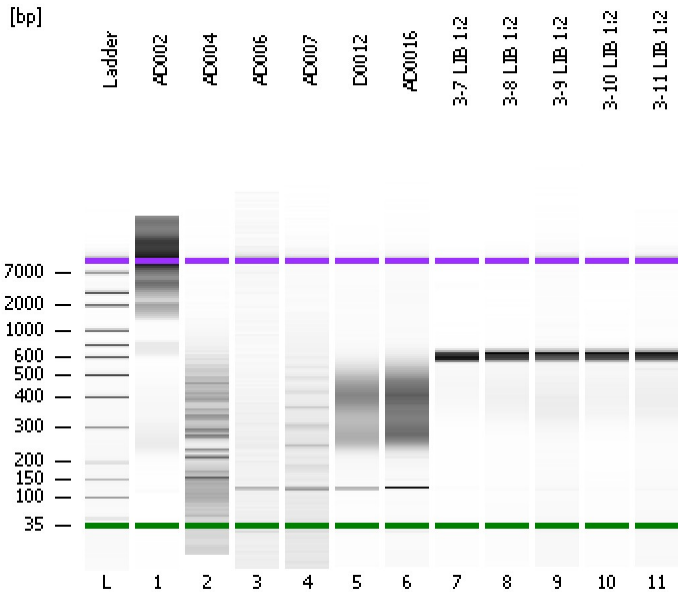


Assay Class: High Sensitivity DNA Assay  
Data Path: C:\...ents and Settings\Bioanalyzer\2012-08-17\2012-08-17\_001.xad

Created: 8/17/2012 11:32:08 AM  
Modified: 8/17/2012 1:00:57 PM

**Electrophoresis File Run Summary**



Instrument Information:

Instrument Name: DE13701086      Firmware: C.01.069  
Serial#: DE13701086      Type: G2938B

Assay Information:

Assay Origin Path: C:\Program Files\Agilent\2100 bioanalyzer\2100 expert\assays\dsDNA\High Sensitivity DNA.xsy  
Assay Class: High Sensitivity DNA Assay  
Version: 1.03  
Assay Comments: Copyright © 2003-2010 Agilent Technologies

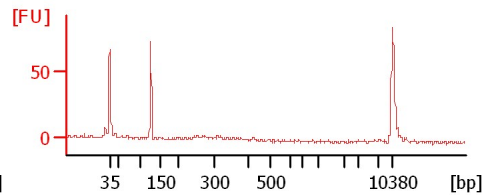
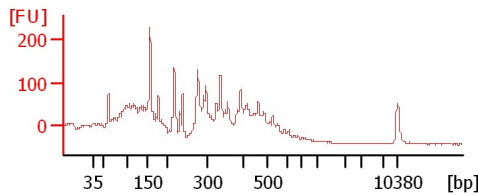
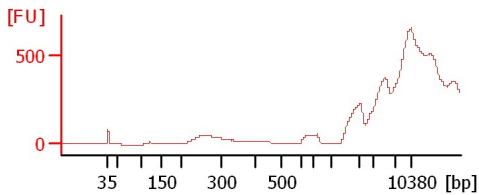
Chip Information:

Chip Lot #:  
Reagent Kit Lot #:  
Chip Comments:

**AD002**

**AD004**

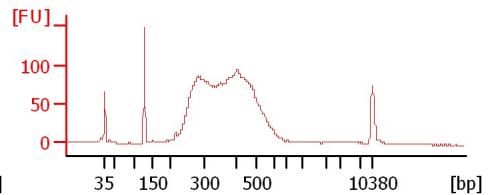
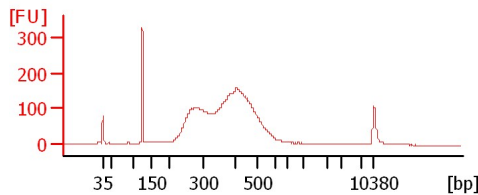
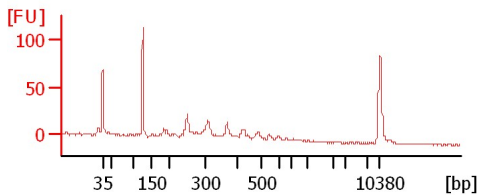
**AD006**



**AD007**

**D0012**

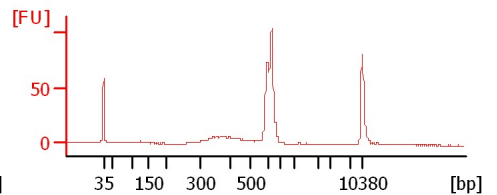
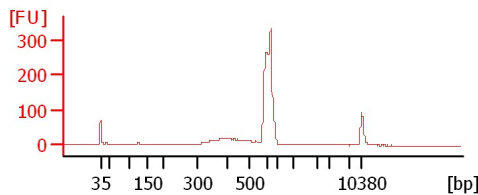
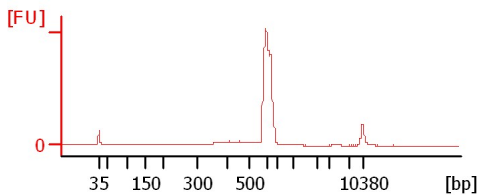
**AD0016**



**3-7 LIB 1:2**

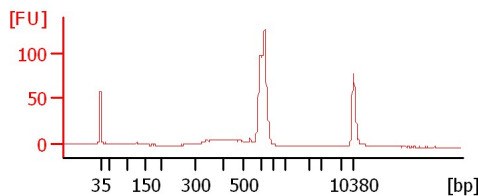
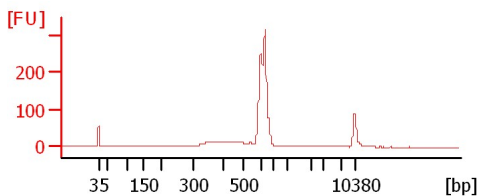
**3-8 LIB 1:2**

**3-9 LIB 1:2**



**3-10 LIB 1:2**

**3-11 LIB 1:2**



Assay Class: High Sensitivity DNA Assay  
Data Path: C:\...ents and Settings\Bioanalyzer\2012-08-17\2012-08-17\_001.xad

Created: 8/17/2012 11:32:08 AM  
Modified: 8/17/2012 1:00:57 PM

**Electrophoresis File Run Summary (Chip Summary)**

Sample Name	Sample Comment	Rest. Digest	Status	Observation	Result Label	Result Color
AD002		<input type="checkbox"/>	✓			
AD004		<input type="checkbox"/>	✓			
AD006		<input type="checkbox"/>	✓			
AD007		<input type="checkbox"/>	✓			
D0012		<input type="checkbox"/>	✓			
AD0016		<input type="checkbox"/>	✓			
3-7 LIB 1:2		<input type="checkbox"/>	✓			
3-8 LIB 1:2		<input type="checkbox"/>	✓			
3-9 LIB 1:2		<input type="checkbox"/>	✓			
3-10 LIB 1:2		<input type="checkbox"/>	✓			
3-11 LIB 1:2		<input type="checkbox"/>	✓			
Ladder		<input type="checkbox"/>	✓			

**Chip Lot #**

**Reagent Kit Lot #**

**Chip Comments :**

Assay Class: High Sensitivity DNA Assay  
Data Path: C:\...ents and Settings\Bioanalyzer\2012-08-17\2012-08-17\_001.xad

Created: 8/17/2012 11:32:08 AM  
Modified: 8/17/2012 1:00:57 PM

**Electrophoresis Assay Details**

**General Analysis Settings**

Number of Available Sample and Ladder Wells (Max.) : 12  
Minimum Visible Range [s] : 32  
Maximum Visible Range [s] : 138  
Start Analysis Time Range [s] : 33  
End Analysis Time Range [s] : 137.5  
Ladder Concentration [pg/μl] : 1950  
Uses Standard Area for Ladder Fragments  
Lower Marker Concentration [pg/μl] : 125  
Upper Marker Concentration [pg/μl] : 75  
Used Upper Marker for Quantitation  
Standard Curve Fit is Point to Point  
Show Data Aligned to Lower and Upper Marker

**Integrator Settings**

Integration Start Time [s] : 33.05  
Integration End Time [s] : 137  
Slope Threshold : 0.8  
Height Threshold [FU] : 5  
Area Threshold : 0.1  
Width Threshold [s] : 0.6  
Baseline Plateau [s] : 0.5

**Filter Settings**

Filter Width [s] : 0.5  
Polynomial Order : 4

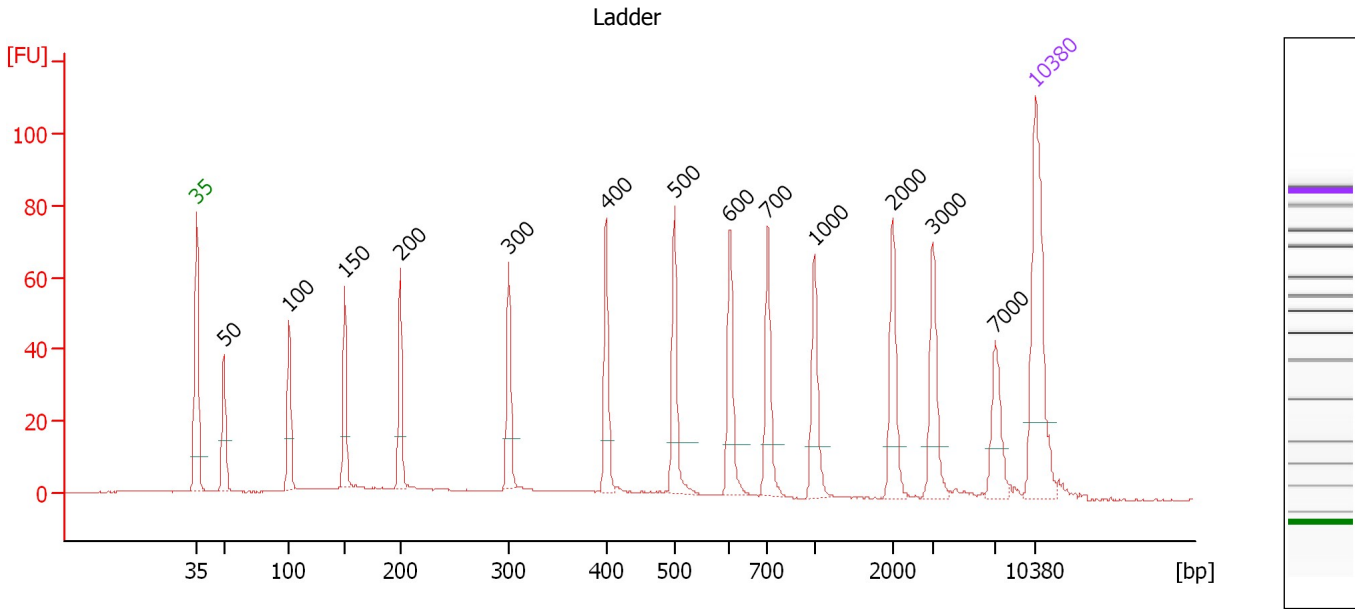
**Ladder**

Ladder Peak	Size	Area
1	35	160
2	50	210
3	100	208
4	150	221
5	200	242
6	300	270
7	400	305
8	500	306
9	600	336
10	700	321
11	1000	366
12	2000	413
13	3000	411
14	7000	400
15	10380	214

Assay Class: High Sensitivity DNA Assay  
 Data Path: C:\...ents and Settings\Bioanalyzer\2012-08-17\2012-08-17\_001.xad

Created: 8/17/2012 11:32:08 AM  
 Modified: 8/17/2012 1:00:57 PM

**Electropherogram Summary**



**Overall Results for Ladder**

Noise: 0.1

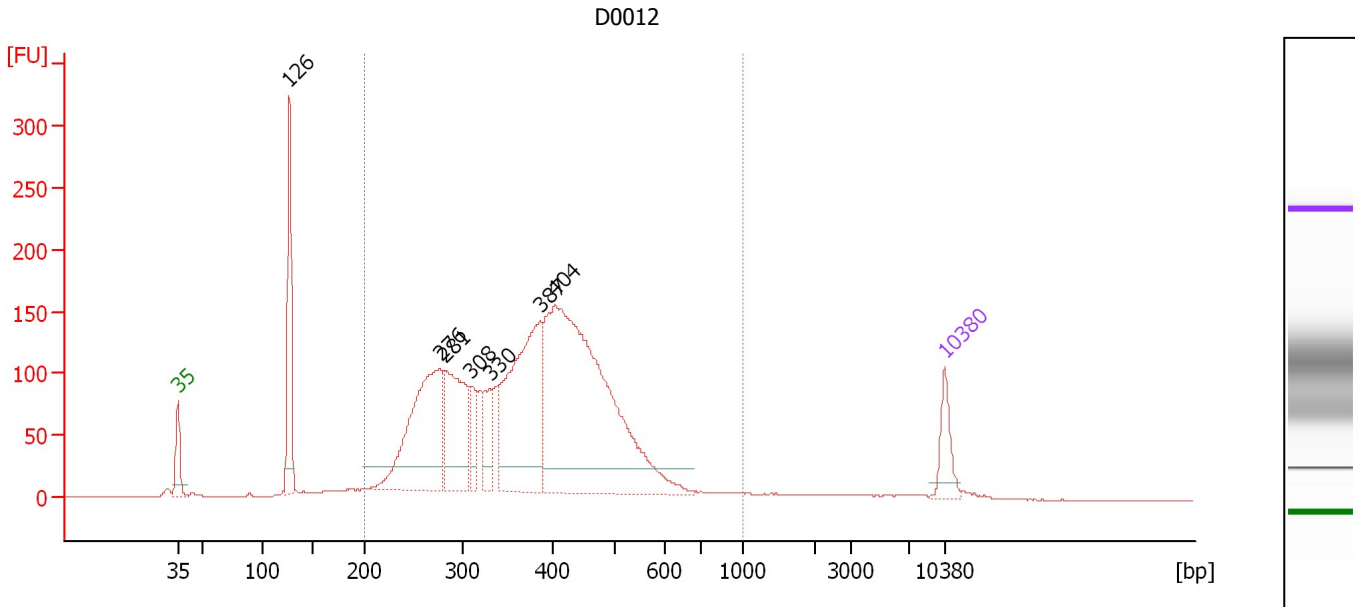
**Peak table for Ladder**

Peak	Size [bp]	Conc. [pg/μl]	Molarity [pmol/l]	Observations
1	35	125.00	5,411.3	Lower Marker
2	50	150.00	4,545.5	Ladder Peak
3	100	150.00	2,272.7	Ladder Peak
4	150	150.00	1,515.2	Ladder Peak
5	200	150.00	1,136.4	Ladder Peak
6	300	150.00	757.6	Ladder Peak
7	400	150.00	568.2	Ladder Peak
8	500	150.00	454.5	Ladder Peak
9	600	150.00	378.8	Ladder Peak
10	700	150.00	324.7	Ladder Peak
11	1,000	150.00	227.3	Ladder Peak
12	2,000	150.00	113.6	Ladder Peak
13	3,000	150.00	75.8	Ladder Peak
14	7,000	150.00	32.5	Ladder Peak
15	10,380	75.00	10.9	Upper Marker

Assay Class: High Sensitivity DNA Assay  
 Data Path: C:\...ents and Settings\Bioanalyzer\2012-08-17\2012-08-17\_001.xad

Created: 8/17/2012 11:32:08 AM  
 Modified: 8/17/2012 1:00:57 PM

**Electropherogram Summary Continued ...**



**Setpoint Deviations for sample 5 : D0012**

Height Threshold [FU] : 20

**Overall Results for sample 5 : D0012**

Number of peaks found: 7                      Corr. Area 1: 3,306.9  
 Noise: 0.3

**Peak table for sample 5 : D0012**

Peak	Size [bp]	Conc. [pg/µl]	Molarity [pmol/l]	Observations
1	35	125.00	5,411.3	Lower Marker
2	126	380.38	4,556.4	
3	276	637.97	3,501.9	
4	281	401.41	2,165.5	
5	308	93.34	459.2	
6	330	119.85	549.9	
7	387	651.98	2,554.4	
8	404	1,436.35	5,384.2	
9	10,380	75.00	10.9	Upper Marker

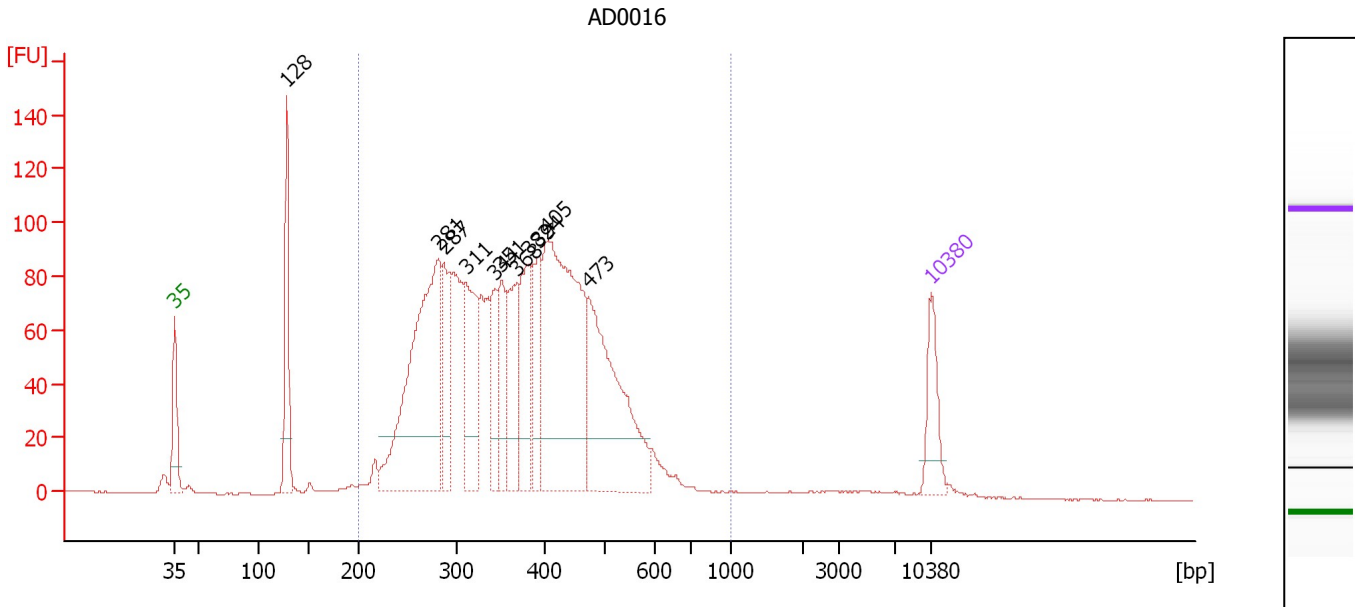
**Region table for sample 5 : D0012**

From [bp]	To [bp]	Average Size [bp]	Molarity [pmol/l]	Conc. [pg/µl]	Corr. Area	% of Total	Size distribution in CV [%]	Color
200	1,000	383	16,384.1	3,783.79	3,306.9	89	25.8	Blue

Assay Class: High Sensitivity DNA Assay  
 Data Path: C:\...ents and Settings\Bioanalyzer\2012-08-17\2012-08-17\_001.xad

Created: 8/17/2012 11:32:08 AM  
 Modified: 8/17/2012 1:00:57 PM

**Electropherogram Summary Continued ...**



**Setpoint Deviations for sample 6 : AD0016**

Height Threshold [FU] : 20

**Overall Results for sample 6 : AD0016**

Number of peaks found: 11      Corr. Area 1: 2,306.5  
 Noise: 0.2

**Peak table for sample 6 : AD0016**

Peak	Size [bp]	Conc. [pg/μl]	Molarity [pmol/l]	Observations
1	35	125.00	5,411.3	Lower Marker
2	128	240.83	2,840.3	
3	281	682.45	3,677.4	
4	287	170.84	901.4	
5	311	213.09	1,039.5	
6	344	117.34	516.7	
7	351	134.62	580.5	
8	368	159.66	656.6	
9	382	191.02	758.0	
10	394	145.81	560.7	
11	405	666.19	2,490.1	
12	473	432.24	1,384.9	
13	10,380	75.00	10.9	Upper Marker

**Region table for sample 6 : AD0016**

From [bp]	To [bp]	Average Size [bp]	Molarity [pmol/l]	Conc. [pg/μl]	Corr. Area	% of Total	Size distribution in CV [%]	Color
200	1,000	380	15,320.5	3,519.51	2,306.5	92	25.7	Blue

Assay Class: High Sensitivity DNA Assay  
Data Path: C:\...ents and Settings\Bioanalyzer\2012-08-17\2012-08-17\_001.xad

Created: 8/17/2012 11:32:08 AM  
Modified: 8/17/2012 1:00:57 PM

**Gel Image**

