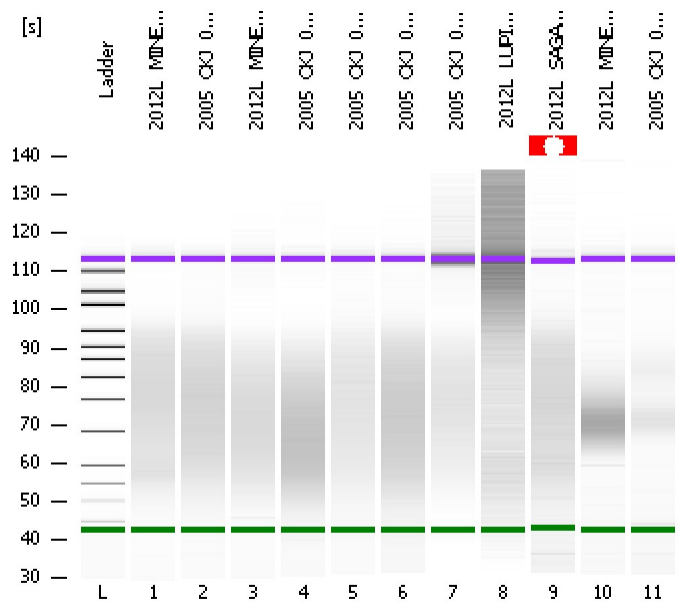


Assay Class: High Sensitivity DNA Assay  
Data Path: C:\...ents and Settings\Bioanalyzer\2012-08-17\2012-08-17\_002.xad

Created: 8/17/2012 4:06:32 PM  
Modified: 8/17/2012 4:57:36 PM

Electrophoresis File Run Summary



**Instrument Information:**  
 Instrument Name: DE13701086      Firmware: C.01.069  
 Serial#: DE13701086      Type: G2938B

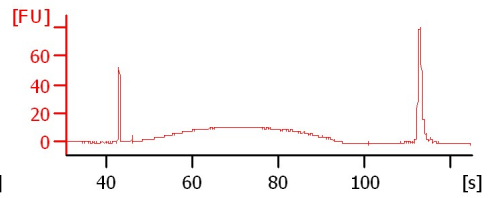
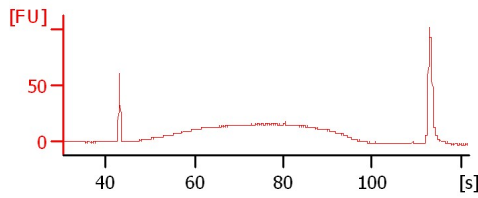
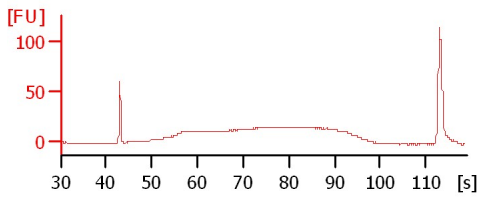
**Assay Information:**  
 Assay Origin Path: C:\Program Files\Agilent\2100 bioanalyzer\2100 expert\assays\dsDNA\High Sensitivity DNA.xsy  
 Assay Class: High Sensitivity DNA Assay  
 Version: 1.03  
 Assay Comments: Copyright © 2003-2010 Agilent Technologies

**Chip Information:**  
 Chip Lot #:   
 Reagent Kit Lot #:   
 Chip Comments:

2012L\_MINE\_098\_1x15s90s

2005\_OKJ\_018\_1x15s90s

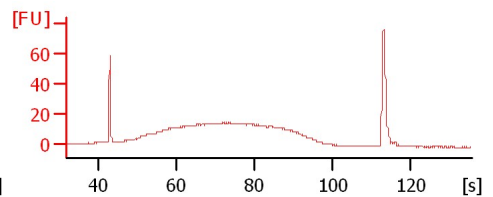
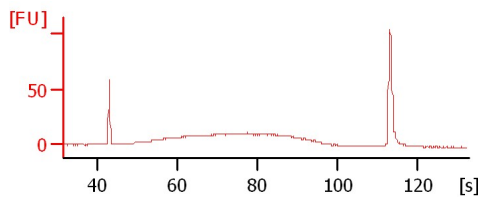
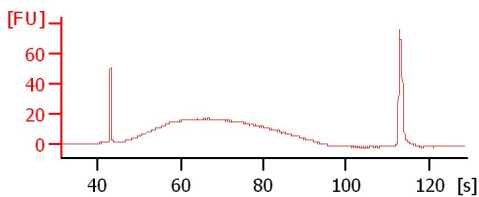
2012L\_MINE\_001\_7x15s90s



2005\_OKJ\_042\_7x15s90s

2005\_OKJ\_045\_7x15s90s

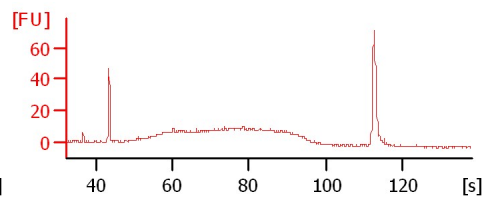
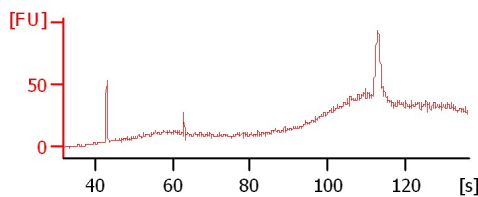
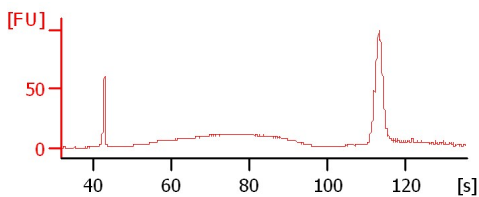
2005\_OKJ\_047\_7x15s90s



2005\_OKJ\_048\_7x15s90s

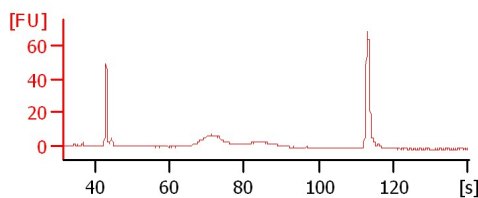
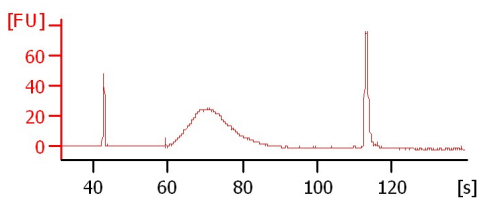
2012L\_LUPI\_079\_NoShear

2012L\_SAGA\_105\_NoShear



2012L\_MINE\_003\_NoShear

2005\_OKJ\_014\_NoShear



Assay Class: High Sensitivity DNA Assay  
Data Path: C:\...ents and Settings\Bioanalyzer\2012-08-17\2012-08-17\_002.xad

Created: 8/17/2012 4:06:32 PM  
Modified: 8/17/2012 4:57:36 PM

**Electrophoresis File Run Summary (Chip Summary)**

Sample Name	Sample Comment	Rest. Digest	Status	Observation	Result Label	Result Color
2012L_MINE_098_1x15s90s		<input type="checkbox"/>	✓			
2005_OKJ_018_1x15s90s		<input type="checkbox"/>	✓			
2012L_MINE_001_7x15s90s		<input type="checkbox"/>	✓			
2005_OKJ_042_7x15s90s		<input type="checkbox"/>	✓			
2005_OKJ_045_7x15s90s		<input type="checkbox"/>	✓			
2005_OKJ_047_7x15s90s		<input type="checkbox"/>	✓			
2005_OKJ_048_7x15s90s		<input type="checkbox"/>	✓			
2012L_LUPI_079_NoShear		<input type="checkbox"/>	✓			
2012L_SAGA_105_NoShear		<input type="checkbox"/>	✓			
2012L_MINE_003_NoShear		<input type="checkbox"/>	✓			
2005_OKJ_014_NoShear		<input type="checkbox"/>	✓			
Ladder		<input type="checkbox"/>	✓			

**Chip Lot #**

**Reagent Kit Lot #**

**Chip Comments :**

Assay Class: High Sensitivity DNA Assay  
Data Path: C:\...ents and Settings\Bioanalyzer\2012-08-17\2012-08-17\_002.xad

Created: 8/17/2012 4:06:32 PM  
Modified: 8/17/2012 4:57:36 PM

**Electrophoresis Assay Details**

**General Analysis Settings**

Number of Available Sample and Ladder Wells (Max.) : 12  
Minimum Visible Range [s] : 32  
Maximum Visible Range [s] : 138  
Start Analysis Time Range [s] : 33  
End Analysis Time Range [s] : 137.5  
Ladder Concentration [pg/μl] : 1950  
Uses Standard Area for Ladder Fragments  
Lower Marker Concentration [pg/μl] : 125  
Upper Marker Concentration [pg/μl] : 75  
Used Upper Marker for Quantitation  
Standard Curve Fit is Point to Point  
Show Data Aligned to Lower and Upper Marker

**Integrator Settings**

Integration Start Time [s] : 33.05  
Integration End Time [s] : 137  
Slope Threshold : 0.8  
Height Threshold [FU] : 5  
Area Threshold : 0.1  
Width Threshold [s] : 0.6  
Baseline Plateau [s] : 0.5

**Filter Settings**

Filter Width [s] : 0.5  
Polynomial Order : 4

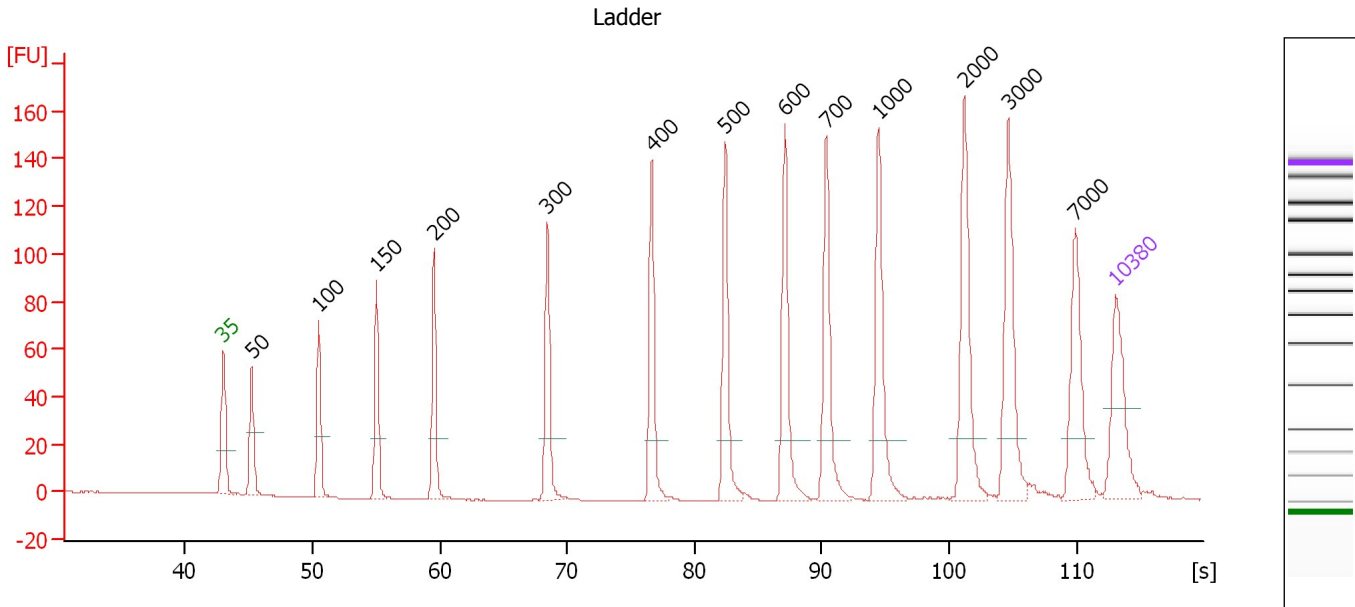
**Ladder**

Ladder Peak	Size	Area
1	35	160
2	50	210
3	100	208
4	150	221
5	200	242
6	300	270
7	400	305
8	500	306
9	600	336
10	700	321
11	1000	366
12	2000	413
13	3000	411
14	7000	400
15	10380	214

Assay Class: High Sensitivity DNA Assay  
 Data Path: C:\...ents and Settings\Bioanalyzer\2012-08-17\2012-08-17\_002.xad

Created: 8/17/2012 4:06:32 PM  
 Modified: 8/17/2012 4:57:36 PM

**Electropherogram Summary**



**Overall Results for Ladder**

Noise: 0.1

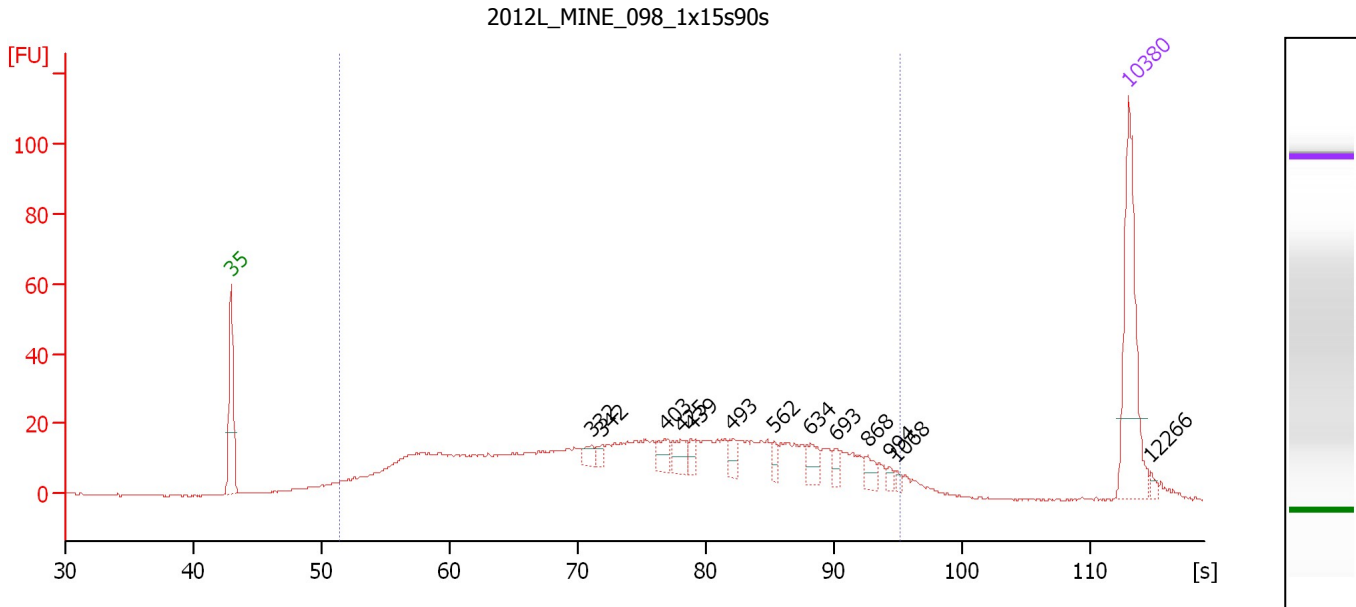
**Peak table for Ladder**

Peak	Size [bp]	Conc. [pg/μl]	Molarity [pmol/l]	Observations
1	35	125.00	5,411.3	Lower Marker
2	50	150.00	4,545.5	Ladder Peak
3	100	150.00	2,272.7	Ladder Peak
4	150	150.00	1,515.2	Ladder Peak
5	200	150.00	1,136.4	Ladder Peak
6	300	150.00	757.6	Ladder Peak
7	400	150.00	568.2	Ladder Peak
8	500	150.00	454.5	Ladder Peak
9	600	150.00	378.8	Ladder Peak
10	700	150.00	324.7	Ladder Peak
11	1,000	150.00	227.3	Ladder Peak
12	2,000	150.00	113.6	Ladder Peak
13	3,000	150.00	75.8	Ladder Peak
14	7,000	150.00	32.5	Ladder Peak
15	10,380	75.00	10.9	Upper Marker

Assay Class: High Sensitivity DNA Assay  
 Data Path: C:\...ents and Settings\Bioanalyzer\2012-08-17\2012-08-17\_002.xad

Created: 8/17/2012 4:06:32 PM  
 Modified: 8/17/2012 4:57:36 PM

**Electropherogram Summary Continued ...**



**Overall Results for sample 1 : 2012L MINE 098 1x15s90s**

Number of peaks found: 13      Corr. Area 1: 793.3  
 Noise: 0.1

**Peak table for sample 1 : 2012L MINE 098 1x15s90s**

Peak	Size [bp]	Conc. [pg/μl]	Molarity [pmol/l]	Observations
1	35	125.00	5,411.3	Lower Marker
2	332	9.55	43.5	
3	342	6.66	29.5	
4	403	13.50	50.7	
5	425	15.18	54.1	
6	439	7.65	26.4	
7	493	11.08	34.0	
8	562	6.90	18.6	
9	634	13.01	31.1	
10	693	7.24	15.8	
11	868	8.20	14.3	
12	994	3.47	5.3	
13	1,068	2.84	4.0	
14	10,380	75.00	10.9	Upper Marker
15	12,266	0.00	0.0	

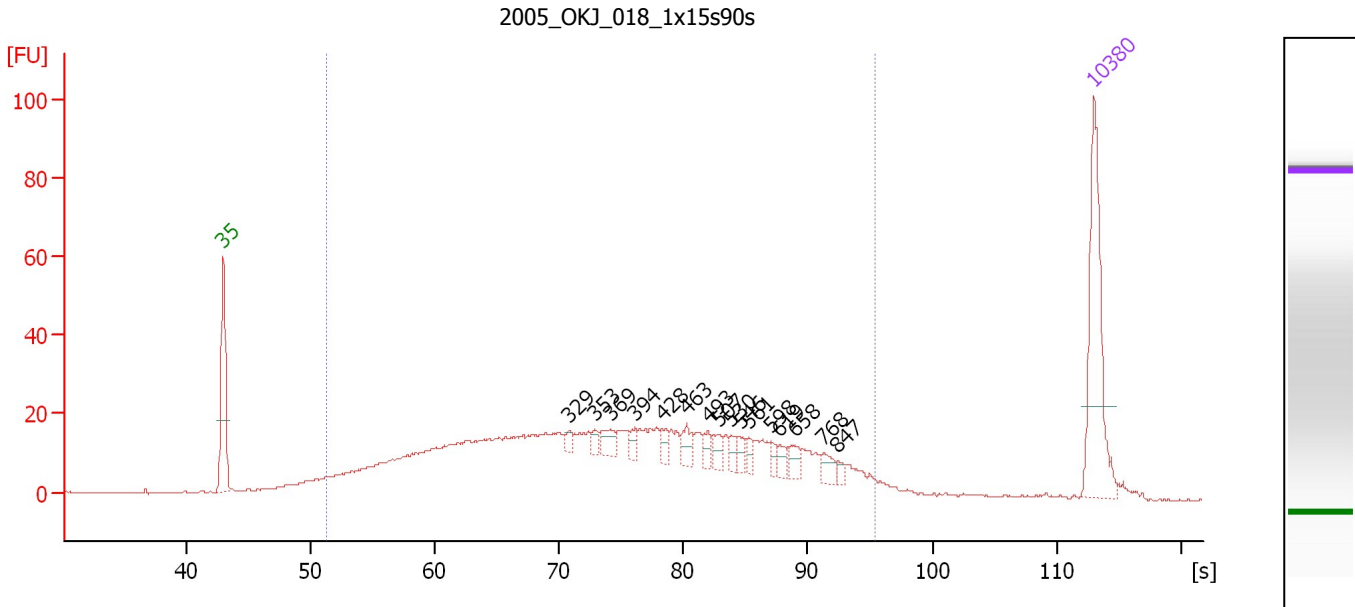
**Region table for sample 1 : 2012L MINE 098 1x15s90s**

From [bp]	To [bp]	Average Size [bp]	Molarity [pmol/l]	Conc. [pg/μl]	Corr. Area	% of Total	Size distribution in CV [%]	Color
111	1,112	422	4,532.0	869.83	793.3	94	47.7	Blue

Assay Class: High Sensitivity DNA Assay  
 Data Path: C:\...ents and Settings\Bioanalyzer\2012-08-17\2012-08-17\_002.xad

Created: 8/17/2012 4:06:32 PM  
 Modified: 8/17/2012 4:57:36 PM

**Electropherogram Summary Continued ...**



**Overall Results for sample 2 : 2005 OKJ 018 1x15s90s**

Number of peaks found: 16                      Corr. Area 1: 817.6  
 Noise: 0.2

**Peak table for sample 2 : 2005 OKJ 018 1x15s90s**

Peak	Size [bp]	Conc. [pg/μl]	Molarity [pmol/l]	Observations
1	35	125.00	5,411.3	Lower Marker
2	329	5.46	25.2	
3	353	6.40	27.4	
4	369	13.84	56.9	
5	394	7.25	27.9	
6	428	8.43	29.8	
7	463	12.93	42.3	
8	493	8.34	25.7	
9	507	9.74	29.1	
10	530	6.48	18.5	
11	546	7.30	20.2	
12	561	6.55	17.7	
13	598	5.52	14.0	
14	619	7.60	18.6	
15	658	9.46	21.8	
16	768	8.85	17.5	
17	847	4.36	7.8	
18	10,380	75.00	10.9	Upper Marker

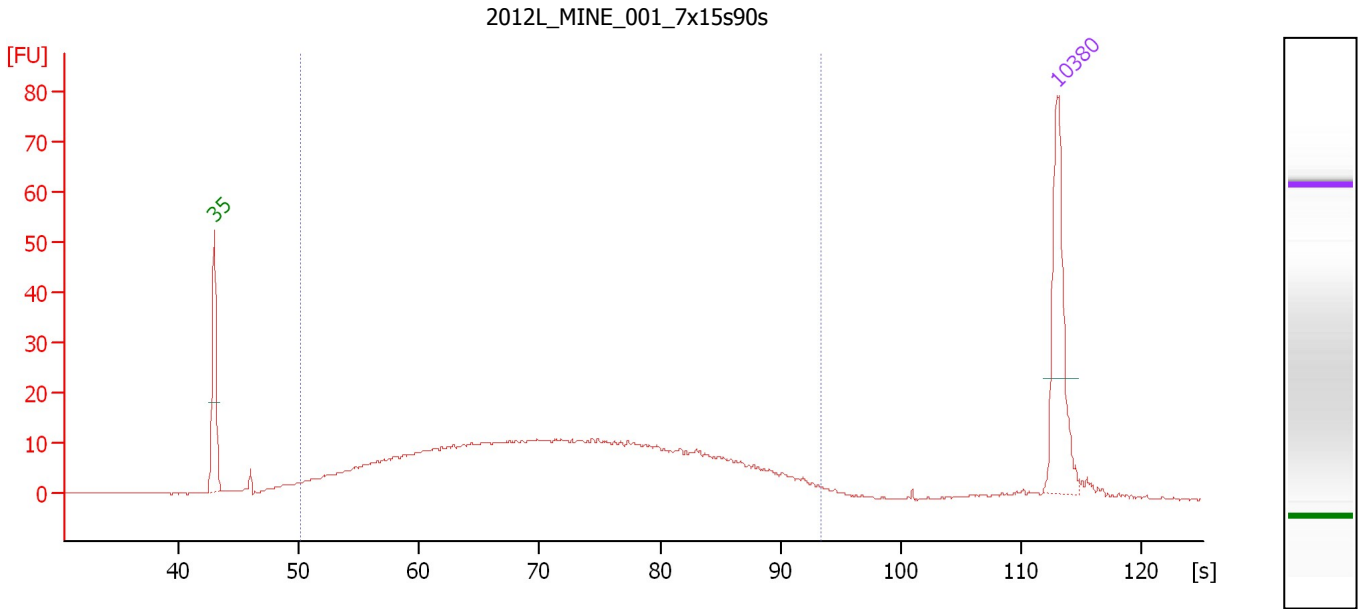
**Region table for sample 2 : 2005 OKJ 018 1x15s90s**

From [bp]	To [bp]	Average Size [bp]	Molarity [pmol/l]	Conc. [pg/μl]	Corr. Area	% of Total	Size distribution in CV [%]	Color
108	1,146	409	5,112.4	973.92	817.6	93	47.1	Blue

Assay Class: High Sensitivity DNA Assay  
 Data Path: C:\...ents and Settings\Bioanalyzer\2012-08-17\2012-08-17\_002.xad

Created: 8/17/2012 4:06:32 PM  
 Modified: 8/17/2012 4:57:36 PM

**Electropherogram Summary Continued ...**



**Overall Results for sample 3 : 2012L MINE 001 7x15s90s**

Number of peaks found: 0                      Corr. Area 1: 506.0  
 Noise: 0.1

**Peak table for sample 3 : 2012L MINE 001 7x15s90s**

Peak	Size [bp]	Conc. [pg/μl]	Molarity [pmol/l]	Observations
1	35	125.00	5,411.3	Lower Marker
2	10,380	75.00	10.9	Upper Marker

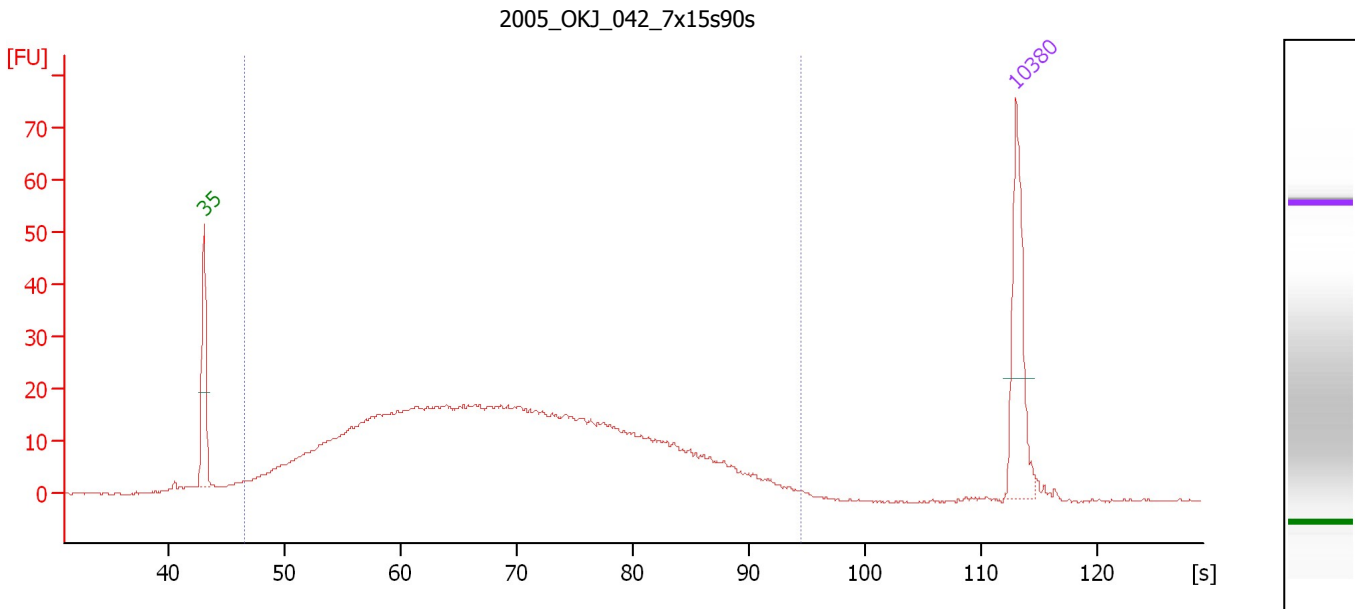
**Region table for sample 3 : 2012L MINE 001 7x15s90s**

From [bp]	To [bp]	Average Size [bp]	Molarity [pmol/l]	Conc. [pg/μl]	Corr. Area	% of Total	Size distribution in CV [%]	Color
96	916	361	4,456.8	775.16	506.0	94	43.0	Blue

Assay Class: High Sensitivity DNA Assay  
 Data Path: C:\...ents and Settings\Bioanalyzer\2012-08-17\2012-08-17\_002.xad

Created: 8/17/2012 4:06:32 PM  
 Modified: 8/17/2012 4:57:36 PM

**Electropherogram Summary Continued ...**



**Overall Results for sample 4 : 2005 OKJ 042 7x15s90s**

Number of peaks found: 0                      Corr. Area 1: 824.1  
 Noise: 0.1

**Peak table for sample 4 : 2005 OKJ 042 7x15s90s**

Peak	Size [bp]	Conc. [pg/μl]	Molarity [pmol/l]	Observations
1	35	125.00	5,411.3	Lower Marker
2	10,380	75.00	10.9	Upper Marker

**Region table for sample 4 : 2005 OKJ 042 7x15s90s**

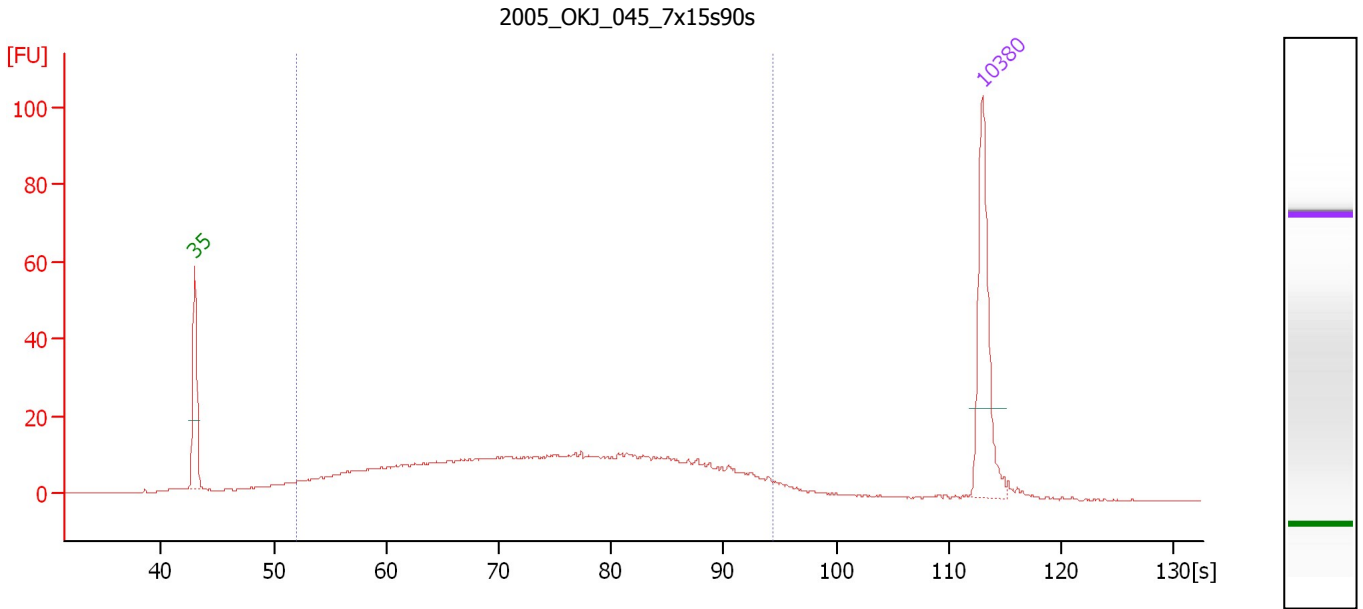
From [bp]	To [bp]	Average Size [bp]	Molarity [pmol/l]	Conc. [pg/μl]	Corr. Area	% of Total	Size distribution in CV [%]	Color
61	1,000	323	9,997.3	1,442.33	824.1	97	47.8	Blue



Assay Class: High Sensitivity DNA Assay  
 Data Path: C:\...ents and Settings\Bioanalyzer\2012-08-17\2012-08-17\_002.xad

Created: 8/17/2012 4:06:32 PM  
 Modified: 8/17/2012 4:57:36 PM

**Electropherogram Summary Continued ...**



**Overall Results for sample 5 : 2005 OKJ 045 7x15s90s**

Number of peaks found: 0                      Corr. Area 1: 490.7  
 Noise: 0.1

**Peak table for sample 5 : 2005 OKJ 045 7x15s90s**

Peak	Size [bp]	Conc. [pg/μl]	Molarity [pmol/l]	Observations
1	35	125.00	5,411.3	Lower Marker
2	10,380	75.00	10.9	Upper Marker

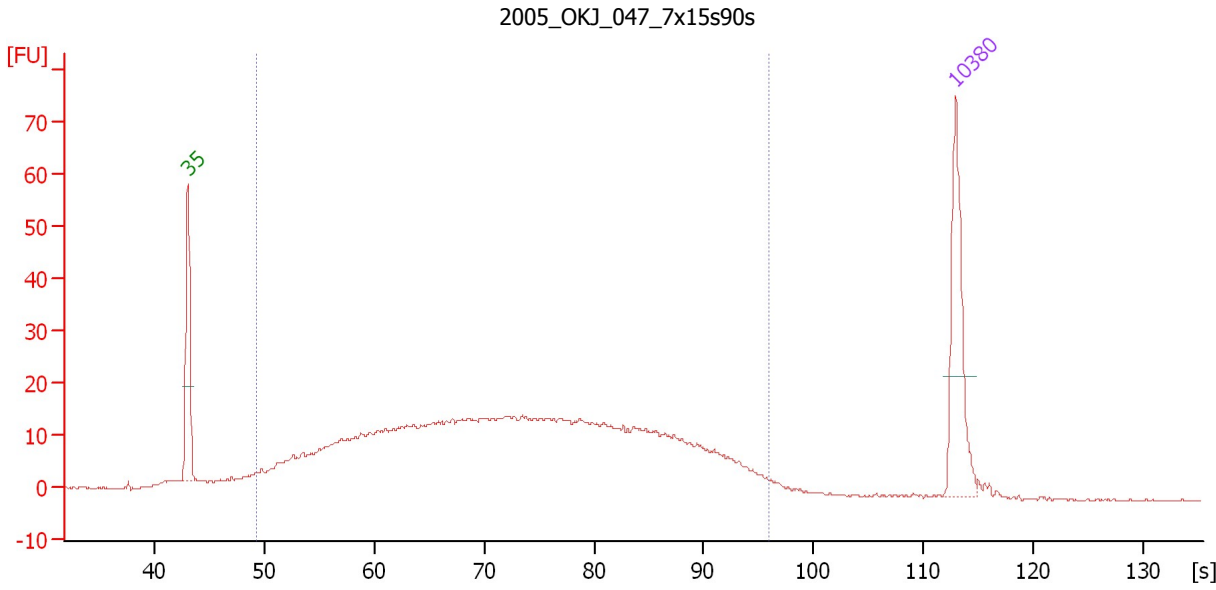
**Region table for sample 5 : 2005 OKJ 045 7x15s90s**

From [bp]	To [bp]	Average Size [bp]	Molarity [pmol/l]	Conc. [pg/μl]	Corr. Area	% of Total	Size distribution in CV [%]	Color
117	1,000	408	2,964.9	573.72	490.7	88	44.9	Blue

Assay Class: High Sensitivity DNA Assay  
 Data Path: C:\...ents and Settings\Bioanalyzer\2012-08-17\2012-08-17\_002.xad

Created: 8/17/2012 4:06:32 PM  
 Modified: 8/17/2012 4:57:36 PM

**Electropherogram Summary Continued ...**



**Overall Results for sample 6 : 2005 OKJ 047 7x15s90s**

Number of peaks found: 0                      Corr. Area 1: 710.6  
 Noise: 0.2

**Peak table for sample 6 : 2005 OKJ 047 7x15s90s**

Peak	Size [bp]	Conc. [pg/μl]	Molarity [pmol/l]	Observations
1	35	125.00	5,411.3	Lower Marker
2	10,380	75.00	10.9	Upper Marker

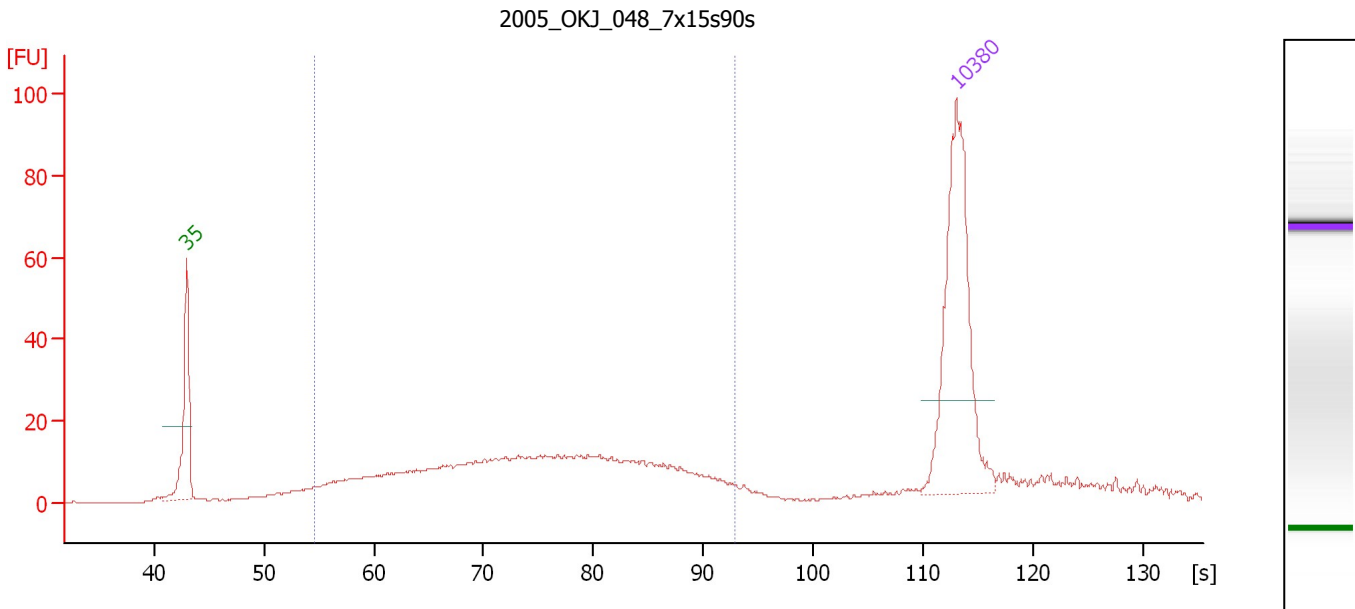
**Region table for sample 6 : 2005 OKJ 047 7x15s90s**

From [bp]	To [bp]	Average Size [bp]	Molarity [pmol/l]	Conc. [pg/μl]	Corr. Area	% of Total	Size distribution in CV [%]	Color
88	1,214	391	6,566.8	1,135.61	710.6	94	50.4	Blue

Assay Class: High Sensitivity DNA Assay  
 Data Path: C:\...ents and Settings\Bioanalyzer\2012-08-17\2012-08-17\_002.xad

Created: 8/17/2012 4:06:32 PM  
 Modified: 8/17/2012 4:57:36 PM

**Electropherogram Summary Continued ...**



**Overall Results for sample 7 : 2005 OKJ 048 7x15s90s**

Number of peaks found: 0                      Corr. Area 1: 395.5  
 Noise: 0.1

**Peak table for sample 7 : 2005 OKJ 048 7x15s90s**

Peak	Size [bp]	Conc. [pg/μl]	Molarity [pmol/l]	Observations
1	35	125.00	5,411.3	Lower Marker
2	10,380	75.00	10.9	Upper Marker

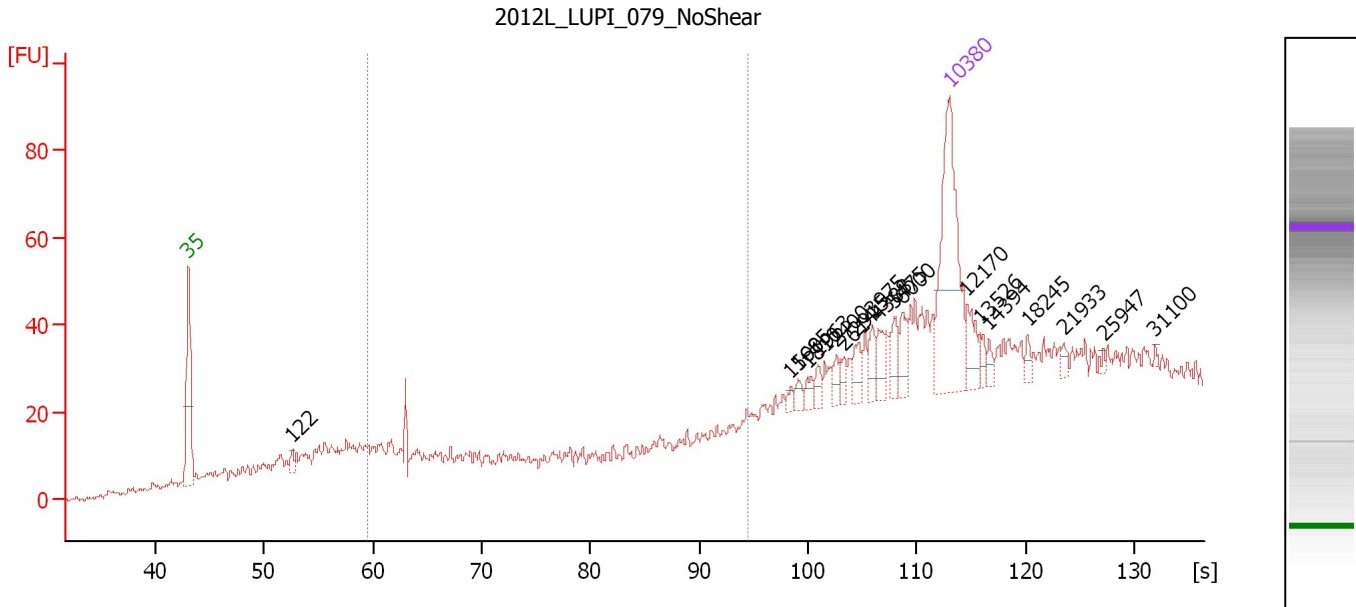
**Region table for sample 7 : 2005 OKJ 048 7x15s90s**

From [bp]	To [bp]	Average Size [bp]	Molarity [pmol/l]	Conc. [pg/μl]	Corr. Area	% of Total	Size distribution in CV [%]	Color
146	884	398	1,033.3	214.78	395.5	86	37.8	Blue

Assay Class: High Sensitivity DNA Assay  
 Data Path: C:\...ents and Settings\Bioanalyzer\2012-08-17\2012-08-17\_002.xad

Created: 8/17/2012 4:06:32 PM  
 Modified: 8/17/2012 4:57:36 PM

**Electropherogram Summary Continued ...**



**Overall Results for sample 8 : 2012L\_LUPI\_079\_NoShear**

Number of peaks found: 19      Corr. Area 1: 22.8  
 Noise: 0.8

**Peak table for sample 8 : 2012L\_LUPI\_079\_NoShear**

Peak	Size [bp]	Conc. [pg/μl]	Molarity [pmol/l]	Observations
1	35	125.00	5,411.3	Lower Marker
2	122	7.46	92.3	
3	1,590	2.56	2.4	
4	1,685	4.08	3.7	
5	1,810	4.13	3.5	
6	1,963	4.48	3.5	
7	2,400	4.82	3.0	
8	2,614	4.74	2.7	
9	2,915	8.40	4.4	
10	3,975	7.65	2.9	
11	4,388	9.86	3.4	
12	5,475	10.52	2.9	
13	6,000	10.55	2.7	
14	10,380	75.00	10.9	Upper Marker
15	12,170	0.00	0.0	
16	13,526	0.00	0.0	
17	14,394	0.00	0.0	
18	18,245	0.00	0.0	
19	21,933	0.00	0.0	
20	25,947	0.00	0.0	
21	31,100	0.00	0.0	

**Region table for sample 8 : 2012L\_LUPI\_079\_NoShear**

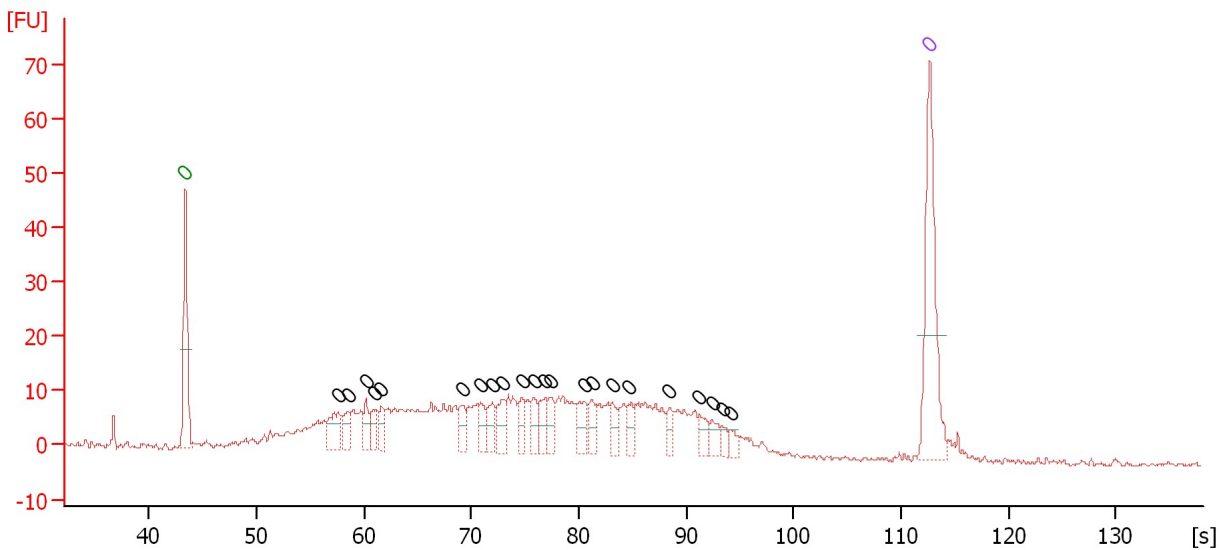
From [bp]	To [bp]	Average Size [bp]	Molarity [pmol/l]	Conc. [pg/μl]	Corr. Area	% of Total	Size distribution in CV [%]	Color
200	1,000	233	191.5	28.53	22.8	6	33.5	Blue

Assay Class: High Sensitivity DNA Assay  
 Data Path: C:\...ents and Settings\Bioanalyzer\2012-08-17\2012-08-17\_002.xad

Created: 8/17/2012 4:06:32 PM  
 Modified: 8/17/2012 4:57:36 PM

**Electropherogram Summary Continued ...**

2012L\_SAGA\_105\_NoShear



**Setpoint Deviations for sample 9 : 2012L SAGA 105 NoShear**

End Analysis Time Range [s] : 106.05

**Overall Results for sample 9 : 2012L SAGA 105 NoShear**

Number of peaks found: 22                      Noise: 0.6

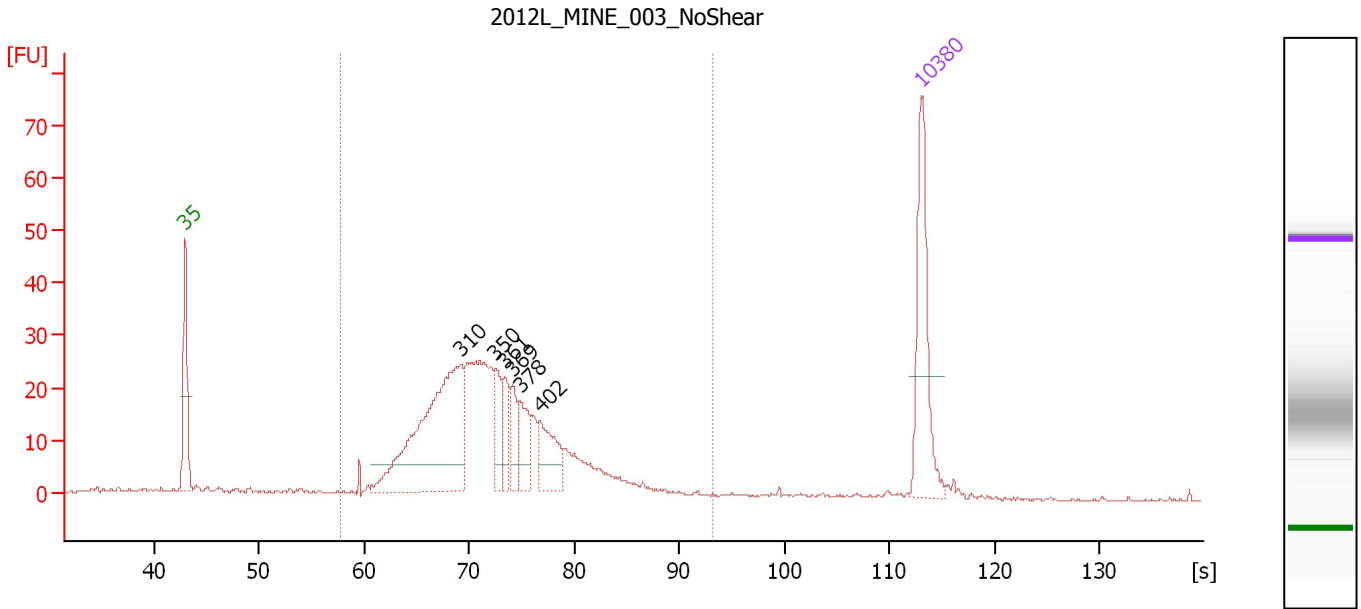
**Peak table for sample 9 : 2012L SAGA 105 NoShear**

Peak	Size [bp]	Conc. [pg/μl]	Molarity [pmol/l]	Observations
1	0	125.00	0.0	Lower Marker
2	0	45.85	0.0	
3	0	27.25	0.0	
4	0	26.57	0.0	
5	0	26.17	0.0	
6	0	25.66	0.0	
7	0	28.69	0.0	
8	0	25.14	0.0	
9	0	30.50	0.0	
10	0	36.29	0.0	
11	0	26.83	0.0	
12	0	28.56	0.0	
13	0	28.50	0.0	
14	0	30.56	0.0	
15	0	38.93	0.0	
16	0	29.62	0.0	
17	0	27.41	0.0	
18	0	24.01	0.0	
19	0	19.53	0.0	
20	0	25.35	0.0	
21	0	19.94	0.0	
22	0	12.51	0.0	
23	0	14.00	0.0	
24	0	75.00	0.0	Upper Marker

Assay Class: High Sensitivity DNA Assay  
 Data Path: C:\...ents and Settings\Bioanalyzer\2012-08-17\2012-08-17\_002.xad

Created: 8/17/2012 4:06:32 PM  
 Modified: 8/17/2012 4:57:36 PM

**Electropherogram Summary Continued ...**



**Overall Results for sample 10 : 2012L\_MINE\_003\_NoShear**

Number of peaks found: 6                      Corr. Area 1: 472.2  
 Noise: 0.2

**Peak table for sample 10 : 2012L\_MINE\_003\_NoShear**

Peak	Size [bp]	Conc. [pg/μl]	Molarity [pmol/l]	Observations
1	35	125.00	5,411.3	Lower Marker
2	310	241.20	1,180.1	
3	350	33.84	146.6	
4	361	26.84	112.7	
5	369	25.59	105.1	
6	378	33.06	132.4	
7	402	45.04	169.7	
8	10,380	75.00	10.9	Upper Marker

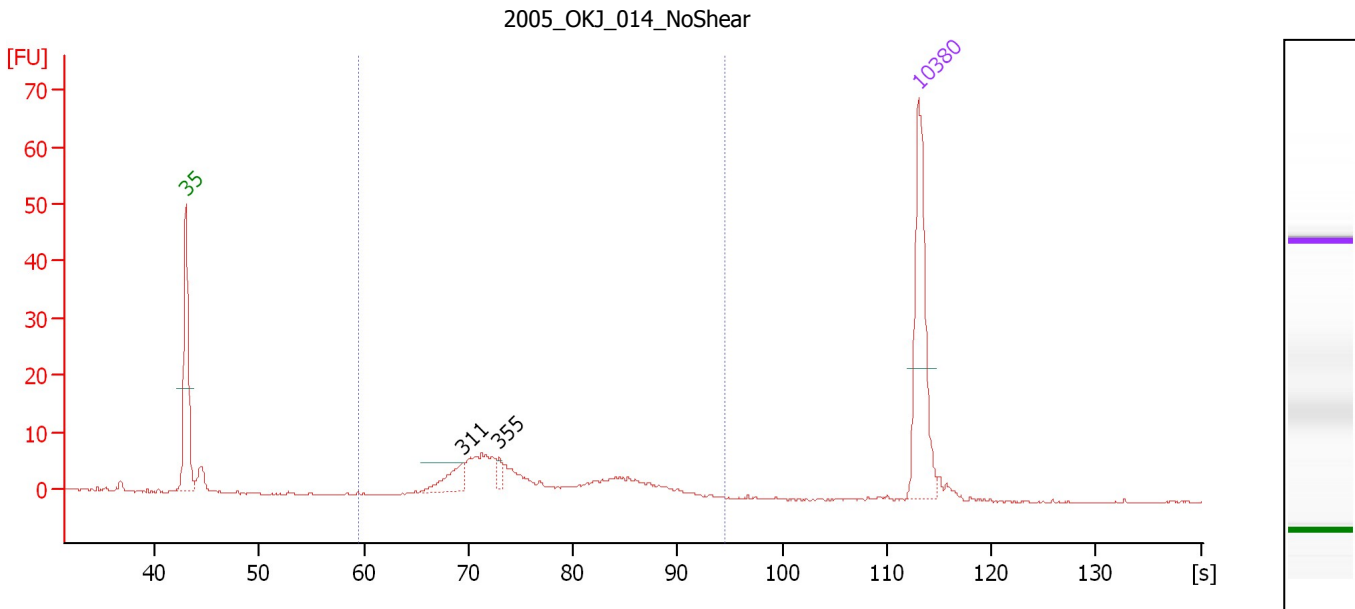
**Region table for sample 10 : 2012L\_MINE\_003\_NoShear**

From [bp]	To [bp]	Average Size [bp]	Molarity [pmol/l]	Conc. [pg/μl]	Corr. Area	% of Total	Size distribution in CV [%]	Color
180	909	353	3,225.2	700.57	472.2	91	24.4	Blue

Assay Class: High Sensitivity DNA Assay  
 Data Path: C:\...ents and Settings\Bioanalyzer\2012-08-17\2012-08-17\_002.xad

Created: 8/17/2012 4:06:32 PM  
 Modified: 8/17/2012 4:57:36 PM

**Electropherogram Summary Continued ...**



**Overall Results for sample 11 : 2005 OKJ 014 NoShear**

Number of peaks found: 2                      Corr. Area 1: 96.6  
 Noise: 0.1

**Peak table for sample 11 : 2005 OKJ 014 NoShear**

Peak	Size [bp]	Conc. [pg/μl]	Molarity [pmol/l]	Observations
1	35	125.00	5,411.3	Lower Marker
2	311	22.93	111.7	
3	355	6.94	29.6	
4	10,380	75.00	10.9	Upper Marker

**Region table for sample 11 : 2005 OKJ 014 NoShear**

From [bp]	To [bp]	Average Size [bp]	Molarity [pmol/l]	Conc. [pg/μl]	Corr. Area	% of Total	Size distribution in CV [%]	Color
200	1,000	417	596.5	149.48	96.6	87	28.1	Blue

Assay Class: High Sensitivity DNA Assay  
Data Path: C:\...ents and Settings\Bioanalyzer\2012-08-17\2012-08-17\_002.xad

Created: 8/17/2012 4:06:32 PM  
Modified: 8/17/2012 4:57:36 PM

**Gel Image**

