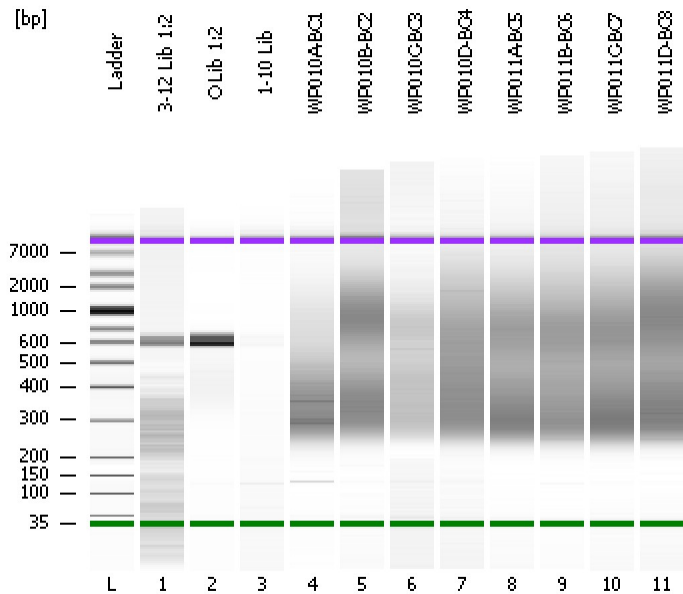


Assay Class: High Sensitivity DNA Assay
Data Path: C:\...ents and Settings\Bioanalyzer\2012-08-20\2012-08-20_002.xad

Created: 8/20/2012 3:49:14 PM
Modified: 8/20/2012 4:32:53 PM

Electrophoresis File Run Summary



Instrument Information:

Instrument Name: DE13701086 Firmware: C.01.069
Serial#: DE13701086 Type: G2938B

Assay Information:

Assay Origin Path: C:\Program Files\Agilent\2100 bioanalyzer\2100 expert\assays\dsDNA\High Sensitivity DNA.xsy
Assay Class: High Sensitivity DNA Assay
Version: 1.03
Assay Comments: Copyright © 2003-2010 Agilent Technologies

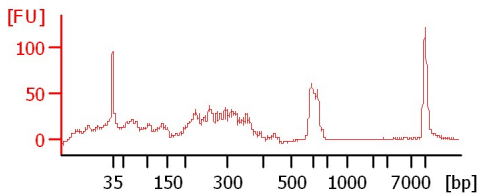
Chip Information:

Chip Lot #:
Reagent Kit Lot #:
Chip Comments:

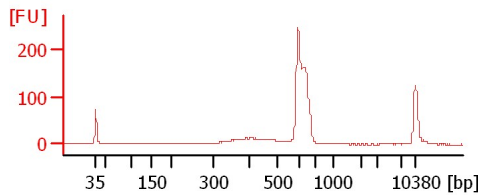
3-12 Lib 1:2

0 Lib 1:2

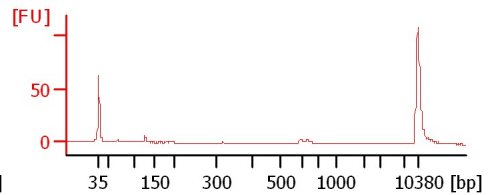
1-10 Lib



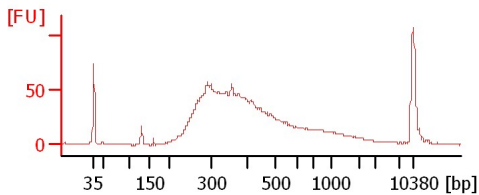
WP010A-BC1



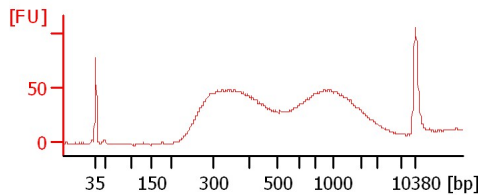
WP010B-BC2



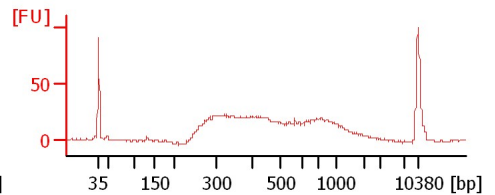
WP010C-BC3



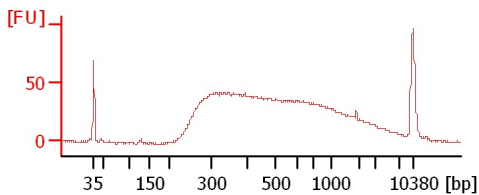
WP010D-BC4



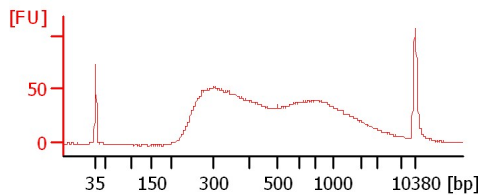
WP011A-BC5



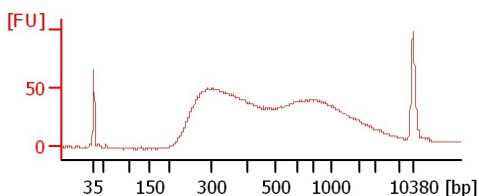
WP011B-BC6



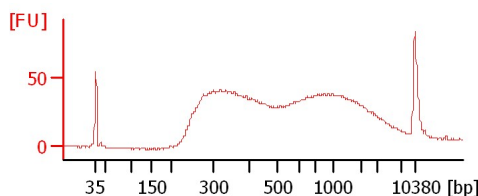
WP011C-BC7



WP011D-BC8



WP011C-BC7



WP011D-BC8

Assay Class: High Sensitivity DNA Assay
 Data Path: C:\...ents and Settings\Bioanalyzer\2012-08-20\2012-08-20_002.xad

Created: 8/20/2012 3:49:14 PM
 Modified: 8/20/2012 4:32:53 PM

Electrophoresis File Run Summary (Chip Summary)

Sample Name	Sample Comment	Rest. Digest	Status	Observation	Result Label	Result Color
3-12 Lib 1:2		<input type="checkbox"/>	✓			
O Lib 1:2		<input type="checkbox"/>	✓			
1-10 Lib		<input type="checkbox"/>	✓			
WP010A-BC1		<input type="checkbox"/>	✓			
WP010B-BC2		<input type="checkbox"/>	✓			
WP010C-BC3		<input type="checkbox"/>	✓			
WP010D-BC4		<input type="checkbox"/>	✓			
WP011A-BC5		<input type="checkbox"/>	✓			
WP011B-BC6		<input type="checkbox"/>	✓			
WP011C-BC7		<input type="checkbox"/>	✓			
WP011D-BC8		<input type="checkbox"/>	✓			
Ladder		<input type="checkbox"/>	✓			

Chip Lot #

Reagent Kit Lot #

Chip Comments :

Assay Class: High Sensitivity DNA Assay
Data Path: C:\...ents and Settings\Bioanalyzer\2012-08-20\2012-08-20_002.xad

Created: 8/20/2012 3:49:14 PM
Modified: 8/20/2012 4:32:53 PM

Electrophoresis Assay Details

General Analysis Settings

Number of Available Sample and Ladder Wells (Max.) : 12
Minimum Visible Range [s] : 32
Maximum Visible Range [s] : 138
Start Analysis Time Range [s] : 33
End Analysis Time Range [s] : 137.5
Ladder Concentration [pg/μl] : 1950
Uses Standard Area for Ladder Fragments
Lower Marker Concentration [pg/μl] : 125
Upper Marker Concentration [pg/μl] : 75
Used Upper Marker for Quantitation
Standard Curve Fit is Point to Point
Show Data Aligned to Lower and Upper Marker

Integrator Settings

Integration Start Time [s] : 33.05
Integration End Time [s] : 137
Slope Threshold : 0.8
Height Threshold [FU] : 5
Area Threshold : 0.1
Width Threshold [s] : 0.6
Baseline Plateau [s] : 0.5

Filter Settings

Filter Width [s] : 0.5
Polynomial Order : 4

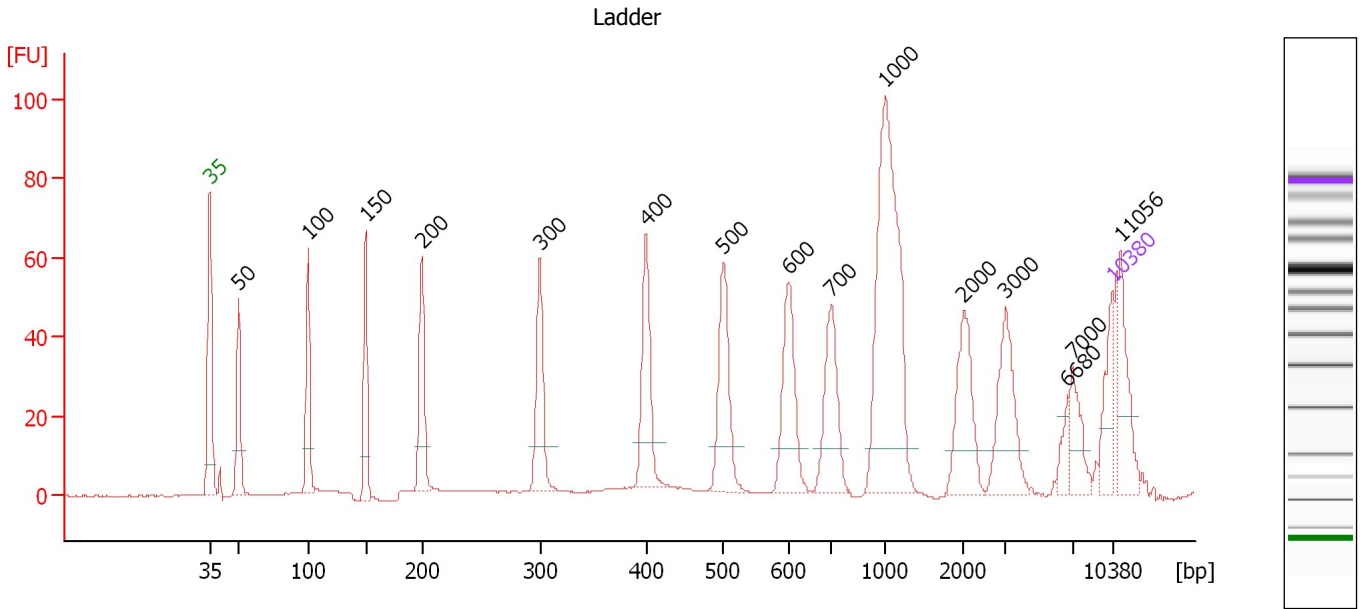
Ladder

Ladder Peak	Size	Area
1	35	160
2	50	210
3	100	208
4	150	221
5	200	242
6	300	270
7	400	305
8	500	306
9	600	336
10	700	321
11	1000	366
12	2000	413
13	3000	411
14	7000	400
15	10380	214

Assay Class: High Sensitivity DNA Assay
 Data Path: C:\...ents and Settings\Bioanalyzer\2012-08-20\2012-08-20_002.xad

Created: 8/20/2012 3:49:14 PM
 Modified: 8/20/2012 4:32:53 PM

Electropherogram Summary



Overall Results for Ladder

Noise: 0.1

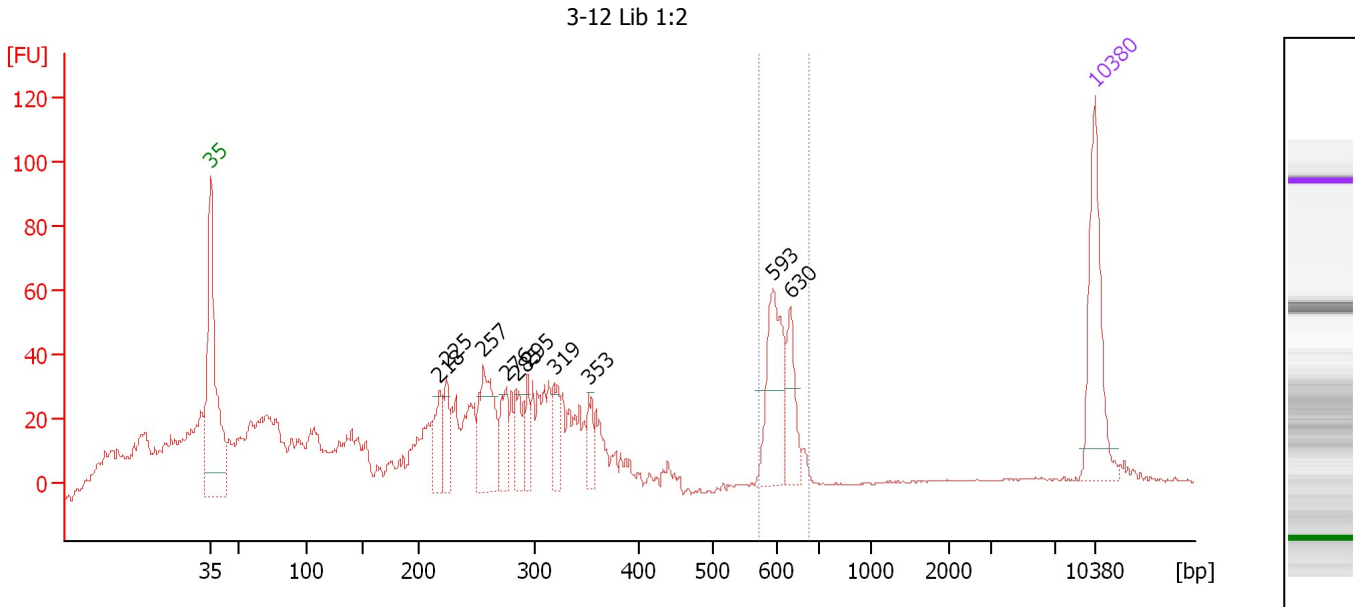
Peak table for Ladder

Peak	Size [bp]	Conc. [pg/μl]	Molarity [pmol/l]	Observations
1	35	125.00	5,411.3	Lower Marker
2	50	150.00	4,545.5	Ladder Peak
3	100	150.00	2,272.7	Ladder Peak
4	150	150.00	1,515.2	Ladder Peak
5	200	150.00	1,136.4	Ladder Peak
6	300	150.00	757.6	Ladder Peak
7	400	150.00	568.2	Ladder Peak
8	500	150.00	454.5	Ladder Peak
9	600	150.00	378.8	Ladder Peak
10	700	150.00	324.7	Ladder Peak
11	1,000	150.00	227.3	Ladder Peak
12	2,000	150.00	113.6	Ladder Peak
13	3,000	150.00	75.8	Ladder Peak
14	6,680	0.00	0.0	
15	7,000	150.00	32.5	Ladder Peak
16	10,380	75.00	10.9	Upper Marker
17	11,056	0.00	0.0	

Assay Class: High Sensitivity DNA Assay
 Data Path: C:\...ents and Settings\Bioanalyzer\2012-08-20\2012-08-20_002.xad

Created: 8/20/2012 3:49:14 PM
 Modified: 8/20/2012 4:32:53 PM

Electropherogram Summary Continued ...



Setpoint Deviations for sample 1 : 3-12 Lib 1:2

Height Threshold [FU] : 30

Overall Results for sample 1 : 3-12 Lib 1:2

Number of peaks found: 10 Corr. Area 1: 164.6
 Noise: 0.3

Peak table for sample 1 : 3-12 Lib 1:2

Peak	Size [bp]	Conc. [pg/μl]	Molarity [pmol/l]	Observations
1	35	125.00	5,411.3	Lower Marker
2	218	49.59	344.1	
3	225	34.25	230.9	
4	257	96.88	572.2	
5	276	38.79	213.1	
6	285	35.42	188.6	
7	295	26.02	133.8	
8	319	29.75	141.2	
9	353	26.10	112.0	
10	593	90.60	231.4	
11	630	42.43	102.1	
12	10,380	75.00	10.9	Upper Marker

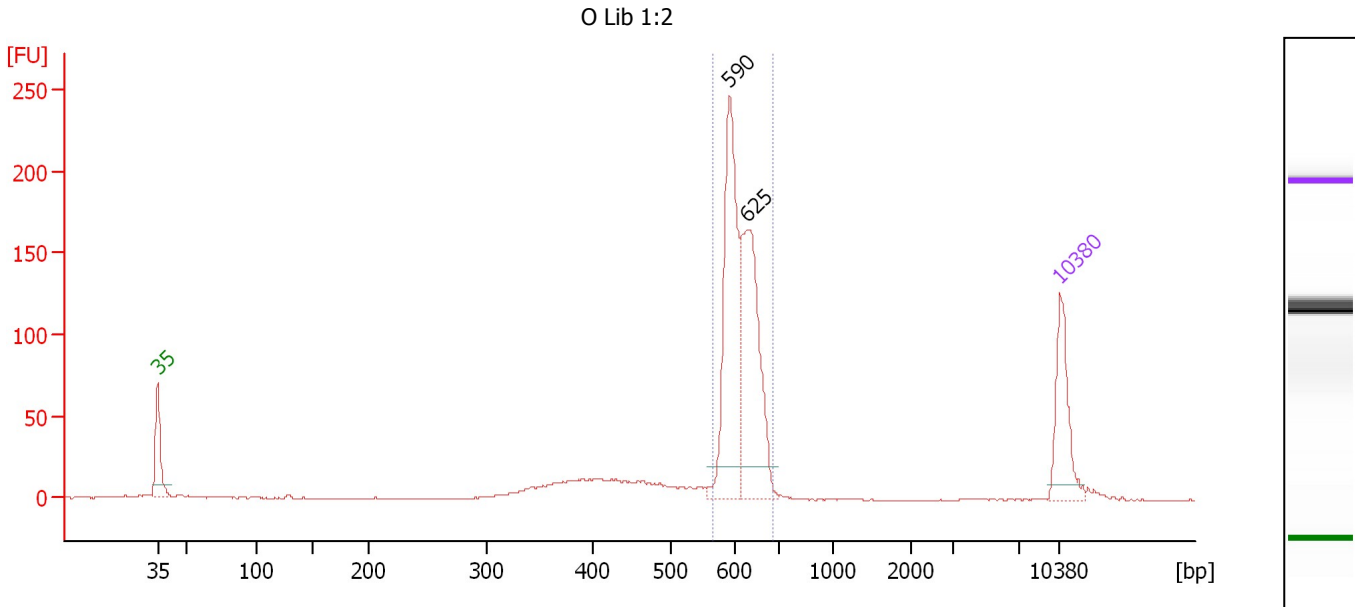
Region table for sample 1 : 3-12 Lib 1:2

From [bp]	To [bp]	Average Size [bp]	Molarity [pmol/l]	Conc. [pg/μl]	Corr. Area	% of Total	Size distribution in CV [%]	Color
570	673	611	339.0	136.48	164.6	10	3.7	Blue

Assay Class: High Sensitivity DNA Assay
 Data Path: C:\...ents and Settings\Bioanalyzer\2012-08-20\2012-08-20_002.xad

Created: 8/20/2012 3:49:14 PM
 Modified: 8/20/2012 4:32:53 PM

Electropherogram Summary Continued ...



Setpoint Deviations for sample 2 : O Lib 1:2

Height Threshold [FU] : 20

Overall Results for sample 2 : O Lib 1:2

Number of peaks found: 2 Corr. Area 1: 671.3
 Noise: 0.2

Peak table for sample 2 : O Lib 1:2

Peak	Size [bp]	Conc. [pg/μl]	Molarity [pmol/l]	Observations
1	35	125.00	5,411.3	Lower Marker
2	590	272.01	698.4	
3	625	242.56	587.7	
4	10,380	75.00	10.9	Upper Marker

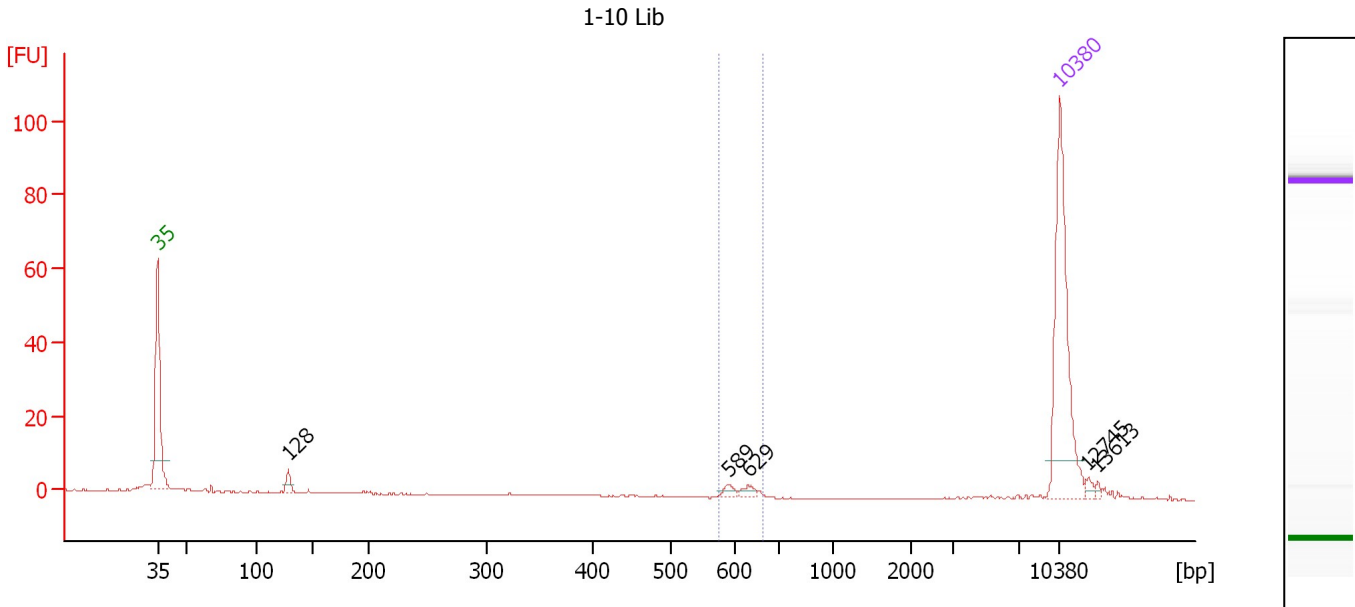
Region table for sample 2 : O Lib 1:2

From [bp]	To [bp]	Average Size [bp]	Molarity [pmol/l]	Conc. [pg/μl]	Corr. Area	% of Total	Size distribution in CV [%]	Color
564	684	614	1,261.9	510.31	671.3	75	4.3	Blue

Assay Class: High Sensitivity DNA Assay
 Data Path: C:\...ents and Settings\Bioanalyzer\2012-08-20\2012-08-20_002.xad

Created: 8/20/2012 3:49:14 PM
 Modified: 8/20/2012 4:32:53 PM

Electropherogram Summary Continued ...



Setpoint Deviations for sample 3 : 1-10 Lib

Height Threshold [FU] : 2

Overall Results for sample 3 : 1-10 Lib

Number of peaks found: 5 Corr. Area 1: 7.7
 Noise: 0.1

Peak table for sample 3 : 1-10 Lib

Peak	Size [bp]	Conc. [pg/μl]	Molarity [pmol/l]	Observations
1	35	125.00	5,411.3	Lower Marker
2	128	6.81	80.4	
3	589	3.81	9.8	
4	629	3.64	8.8	
5	10,380	75.00	10.9	Upper Marker
6	12,745	0.00	0.0	
7	13,613	0.00	0.0	

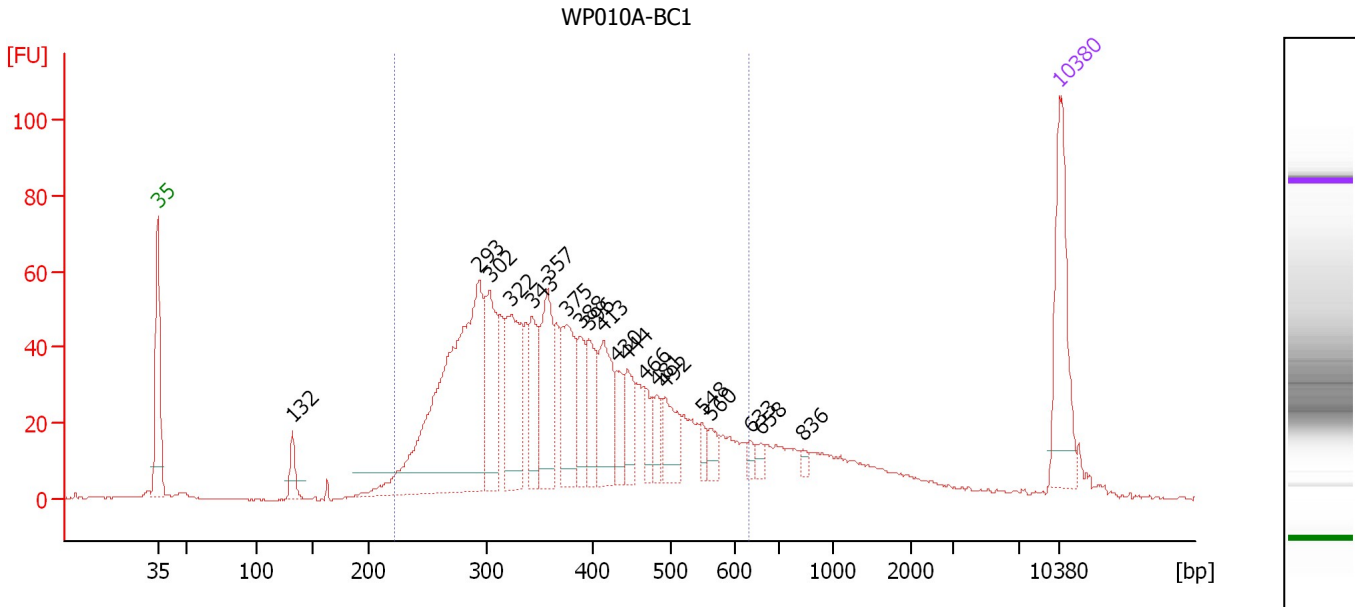
Region table for sample 3 : 1-10 Lib

From [bp]	To [bp]	Average Size [bp]	Molarity [pmol/l]	Conc. [pg/μl]	Corr. Area	% of Total	Size distribution in CV [%]	Color
573	662	613	17.7	7.15	7.7	23	3.9	Blue

Assay Class: High Sensitivity DNA Assay
 Data Path: C:\...ents and Settings\Bioanalyzer\2012-08-20\2012-08-20_002.xad

Created: 8/20/2012 3:49:14 PM
 Modified: 8/20/2012 4:32:53 PM

Electropherogram Summary Continued ...



Overall Results for sample 4 : WP010A-BC1

Number of peaks found: 20 Corr. Area 1: 1,291.8
 Noise: 0.1

Peak table for sample 4 : WP010A-BC1

Peak	Size [bp]	Conc. [pg/μl]	Molarity [pmol/l]	Observations
1	35	125.00	5,411.3	Lower Marker
2	132	23.59	271.0	
3	293	376.11	1,948.0	
4	302	93.33	468.0	
5	322	104.15	490.0	
6	343	54.98	243.2	
7	357	86.59	367.6	
8	375	79.14	320.1	
9	388	36.06	140.9	
10	396	43.72	167.5	
11	413	68.17	250.2	
12	430	26.07	91.8	
13	444	35.47	121.1	
14	466	20.46	66.5	
15	481	19.20	60.5	
16	492	39.15	120.5	
17	548	10.37	28.7	
18	560	13.93	37.7	
19	633	6.78	16.2	
20	658	6.88	15.8	
21	836	4.12	7.5	
22	10,380	75.00	10.9	Upper Marker

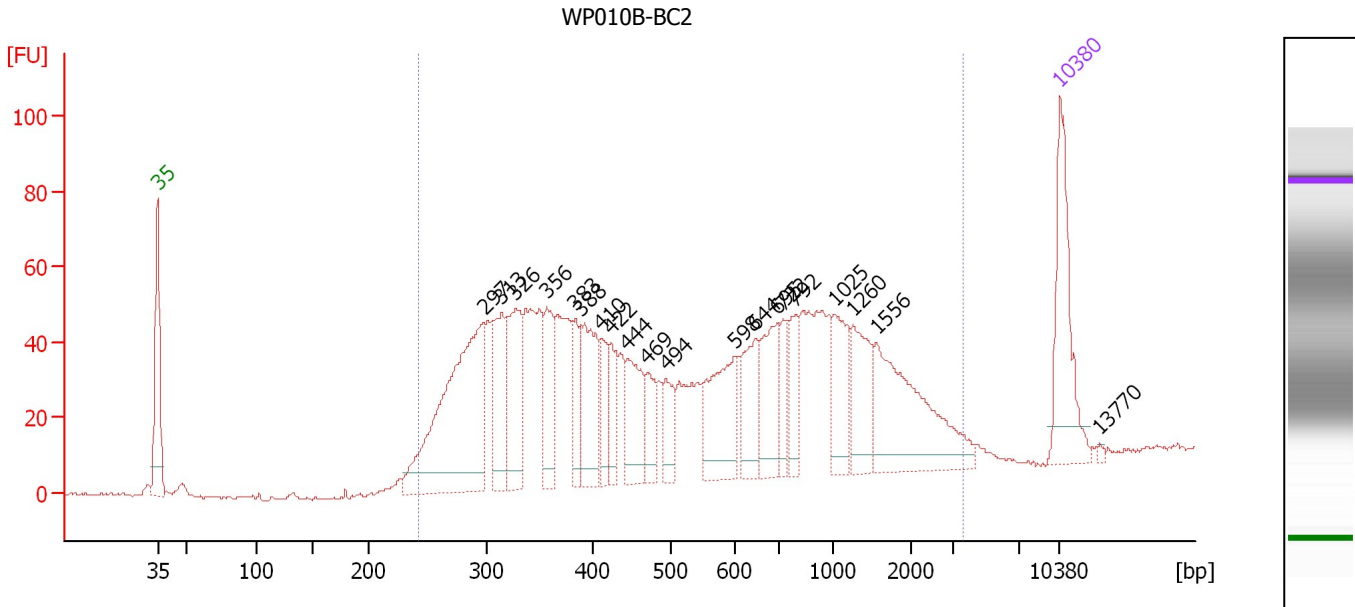
Region table for sample 4 : WP010A-BC1

From [bp]	To [bp]	Average Size [bp]	Molarity [pmol/l]	Conc. [pg/μl]	Corr. Area	% of Total	Size distribution in CV [%]	Color
221	628	375	6,330.0	1,441.30	1,291.8	84	24.8	Blue

Assay Class: High Sensitivity DNA Assay
 Data Path: C:\...ents and Settings\Bioanalyzer\2012-08-20\2012-08-20_002.xad

Created: 8/20/2012 3:49:14 PM
 Modified: 8/20/2012 4:32:53 PM

Electropherogram Summary Continued ...



Overall Results for sample 5 : WP010B-BC2

Number of peaks found: 20 Corr. Area 1: 1,698.6
 Noise: 0.4

Peak table for sample 5 : WP010B-BC2

Peak	Size [bp]	Conc. [pg/μl]	Molarity [pmol/l]	Observations
1	35	125.00	5,411.3	Lower Marker
2	297	279.19	1,422.9	
3	313	79.67	385.3	
4	326	96.28	447.1	
5	356	60.57	258.0	
6	383	36.32	143.8	
7	388	80.61	314.5	
8	410	32.90	121.5	
9	422	33.01	118.5	
10	444	59.80	204.2	
11	469	31.30	101.1	
12	494	31.45	96.5	
13	598	83.33	211.2	
14	644	52.89	124.5	
15	695	64.78	141.2	
16	722	28.04	58.9	
17	792	33.50	64.1	
18	1,025	50.15	74.1	
19	1,260	53.11	63.8	
20	1,556	120.58	117.4	
21	10,380	75.00	10.9	Upper Marker
22	13,770	0.00	0.0	

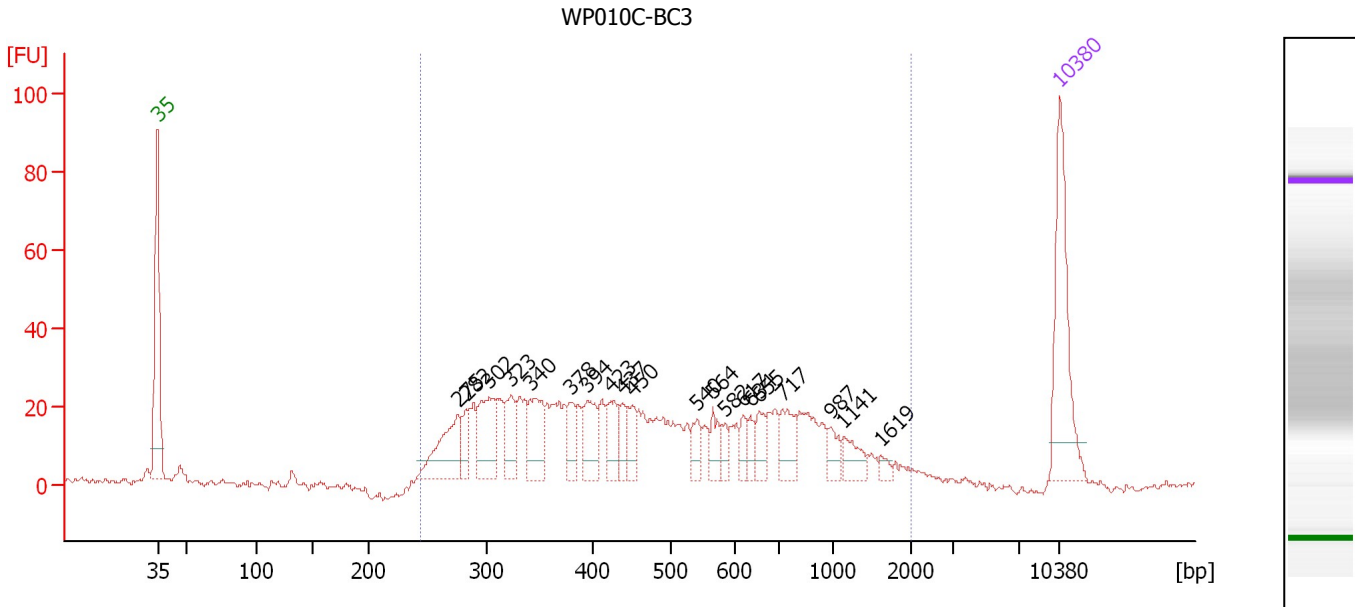
Region table for sample 5 : WP010B-BC2

From [bp]	To [bp]	Average Size [bp]	Molarity [pmol/l]	Conc. [pg/μl]	Corr. Area	% of Total	Size distribution in CV [%]	Color
242	3,528	716	5,652.6	1,649.63	1,698.6	97	77.3	Blue

Assay Class: High Sensitivity DNA Assay
 Data Path: C:\...ents and Settings\Bioanalyzer\2012-08-20\2012-08-20_002.xad

Created: 8/20/2012 3:49:14 PM
 Modified: 8/20/2012 4:32:53 PM

Electropherogram Summary Continued ...



Overall Results for sample 6 : WP010C-BC3

Number of peaks found: 20 Corr. Area 1: 759.7
 Noise: 0.7

Peak table for sample 6 : WP010C-BC3

Peak	Size [bp]	Conc. [pg/μl]	Molarity [pmol/l]	Observations
1	35	125.00	5,411.3	Lower Marker
2	275	62.30	343.2	
3	282	22.22	119.3	
4	302	56.64	284.2	
5	323	32.42	152.3	
6	340	45.21	201.2	
7	378	21.25	85.1	
8	394	34.21	131.5	
9	423	26.80	96.0	
10	437	16.73	58.0	
11	450	18.70	63.0	
12	540	15.53	43.6	
13	564	16.10	43.2	
14	582	10.19	26.5	
15	617	11.95	29.4	
16	634	11.09	26.5	
17	655	16.58	38.4	
18	717	26.61	56.2	
19	987	13.04	20.0	
20	1,141	16.64	22.1	
21	1,619	4.90	4.6	
22	10,380	75.00	10.9	Upper Marker

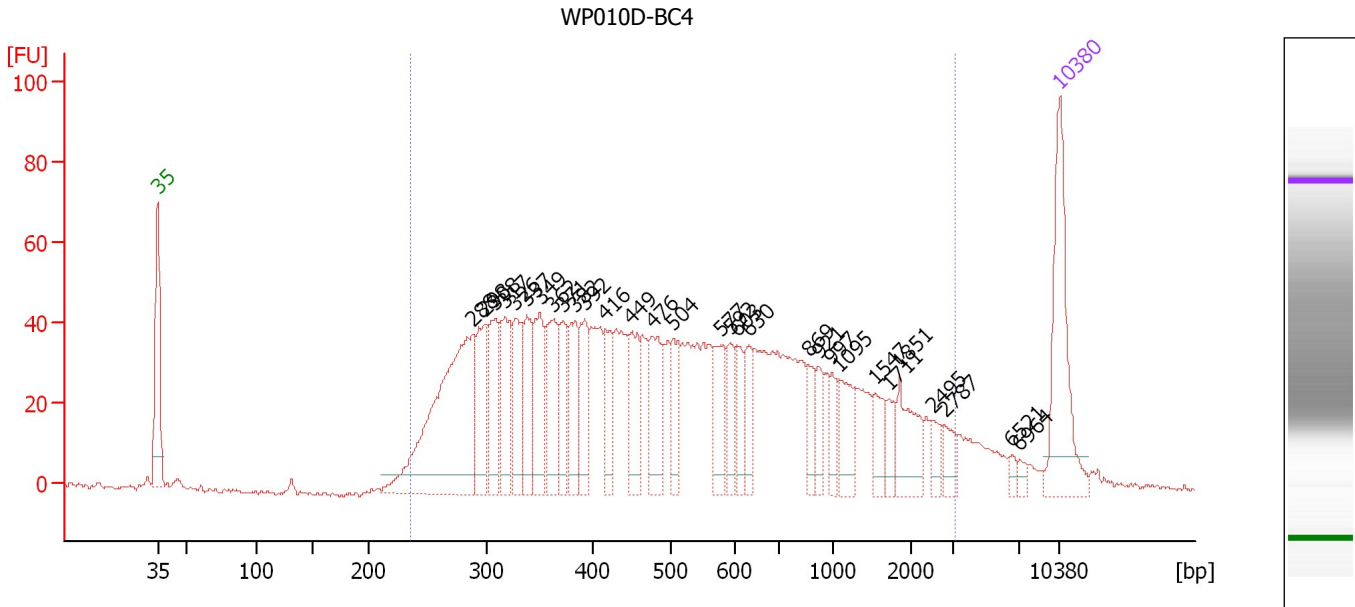
Region table for sample 6 : WP010C-BC3

From [bp]	To [bp]	Average Size [bp]	Molarity [pmol/l]	Conc. [pg/μl]	Corr. Area	% of Total	Size distribution in CV [%]	Color
243	2,001	546	3,073.9	841.29	759.7	97	55.7	Blue

Assay Class: High Sensitivity DNA Assay
 Data Path: C:\...ents and Settings\Bioanalyzer\2012-08-20\2012-08-20_002.xad

Created: 8/20/2012 3:49:14 PM
 Modified: 8/20/2012 4:32:53 PM

Electropherogram Summary Continued ...



Overall Results for sample 7 : WP010D-BC4

Number of peaks found: 30 Corr. Area 1: 1,753.4
 Noise: 0.5

Peak table for sample 7 : WP010D-BC4

Peak	Size [bp]	Conc. [pg/μl]	Molarity [pmol/l]	Observations
1	35	125.00	5,411.3	Lower Marker
2	288	242.30	1,276.2	
3	298	61.53	313.3	
4	308	56.12	276.4	
5	317	61.69	294.9	
6	326	53.74	250.0	
7	337	46.55	209.2	
8	349	57.19	248.0	
9	362	57.65	241.2	
10	371	36.45	148.7	
11	382	46.26	183.3	
12	392	45.24	175.0	
13	416	34.64	126.3	
14	449	42.24	142.5	
15	476	51.70	164.5	
16	504	28.12	84.6	
17	577	33.68	88.5	
18	592	24.05	61.6	
19	603	23.27	58.5	
20	630	23.28	56.0	
21	869	18.51	32.3	
22	921	17.59	28.9	
23	997	15.97	24.3	
24	1,095	27.11	37.5	
25	1,547	19.27	18.9	
26	1,711	13.68	12.1	

Assay Class: High Sensitivity DNA Assay
 Data Path: C:\...ents and Settings\Bioanalyzer\2012-08-20\2012-08-20_002.xad


Created: 8/20/2012 3:49:14 PM
 Modified: 8/20/2012 4:32:53 PM

Electropherogram Summary Continued ...

... Peak table for sample 7 : WP010D-BC4

Peak	Size [bp]	Conc. [pg/μl]	Molarity [pmol/l]	Observations
27	1,851	33.90	27.7	
28	2,495	9.98	6.1	
29	2,787	13.45	7.3	
30	6,521	4.49	1.0	
31	6,964	4.56	1.0	
32	10,380	75.00	10.9	Upper Marker

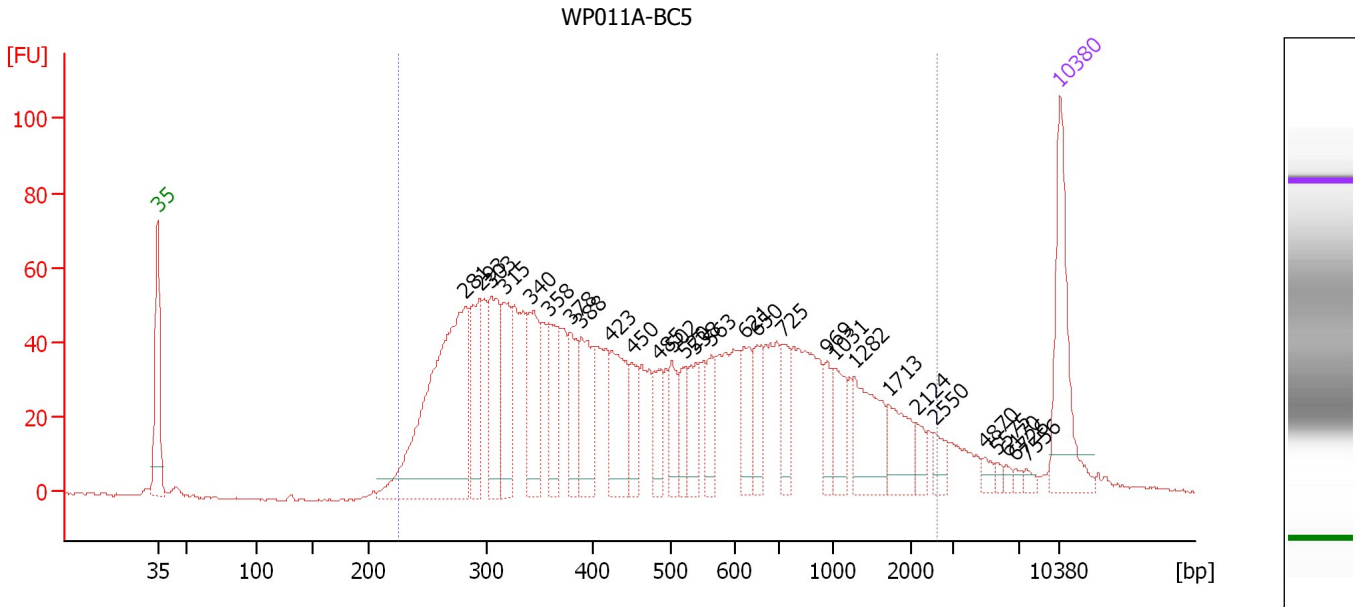
Region table for sample 7 : WP010D-BC4

From [bp]	To [bp]	Average Size [bp]	Molarity [pmol/l]	Conc. [pg/μl]	Corr. Area	% of Total	Size distribution in CV [%]	Color
235	3,104	673	5,949.9	1,689.45	1,753.4	94	79.6	

Assay Class: High Sensitivity DNA Assay
 Data Path: C:\...ents and Settings\Bioanalyzer\2012-08-20\2012-08-20_002.xad

Created: 8/20/2012 3:49:14 PM
 Modified: 8/20/2012 4:32:53 PM

Electropherogram Summary Continued ...



Overall Results for sample 8 : WP011A-BC5

Number of peaks found: 29 Corr. Area 1: 1,955.5
 Noise: 0.4

Peak table for sample 8 : WP011A-BC5

Peak	Size [bp]	Conc. [pg/μl]	Molarity [pmol/l]	Observations
1	35	125.00	5,411.3	Lower Marker
2	281	322.07	1,733.7	
3	293	80.45	415.3	
4	303	88.40	441.7	
5	315	71.94	345.5	
6	340	74.44	331.7	
7	358	51.39	217.5	
8	378	48.64	195.0	
9	388	64.49	251.6	
10	423	71.92	257.4	
11	450	30.07	101.3	
12	485	27.88	87.1	
13	502	33.87	102.2	
14	520	27.03	78.8	
15	538	36.47	102.7	
16	563	31.18	83.9	
17	621	35.56	86.7	
18	650	32.10	74.8	
19	725	31.87	66.6	
20	969	21.03	32.9	
21	1,031	34.26	50.3	
22	1,282	60.91	72.0	
23	1,713	36.05	31.9	
24	2,124	11.47	8.2	
25	2,550	11.01	6.5	
26	4,870	6.01	1.9	

Assay Class: High Sensitivity DNA Assay
 Data Path: C:\...ents and Settings\Bioanalyzer\2012-08-20\2012-08-20_002.xad


Created: 8/20/2012 3:49:14 PM
 Modified: 8/20/2012 4:32:53 PM

Electropherogram Summary Continued ...

... Peak table for sample 8 : WP011A-BC5

Peak	Size [bp]	Conc. [pg/μl]	Molarity [pmol/l]	Observations
27	5,575	3.42	0.9	
28	6,170	3.58	0.9	
29	6,726	3.14	0.7	
30	7,556	3.97	0.8	
31	10,380	75.00	10.9	Upper Marker

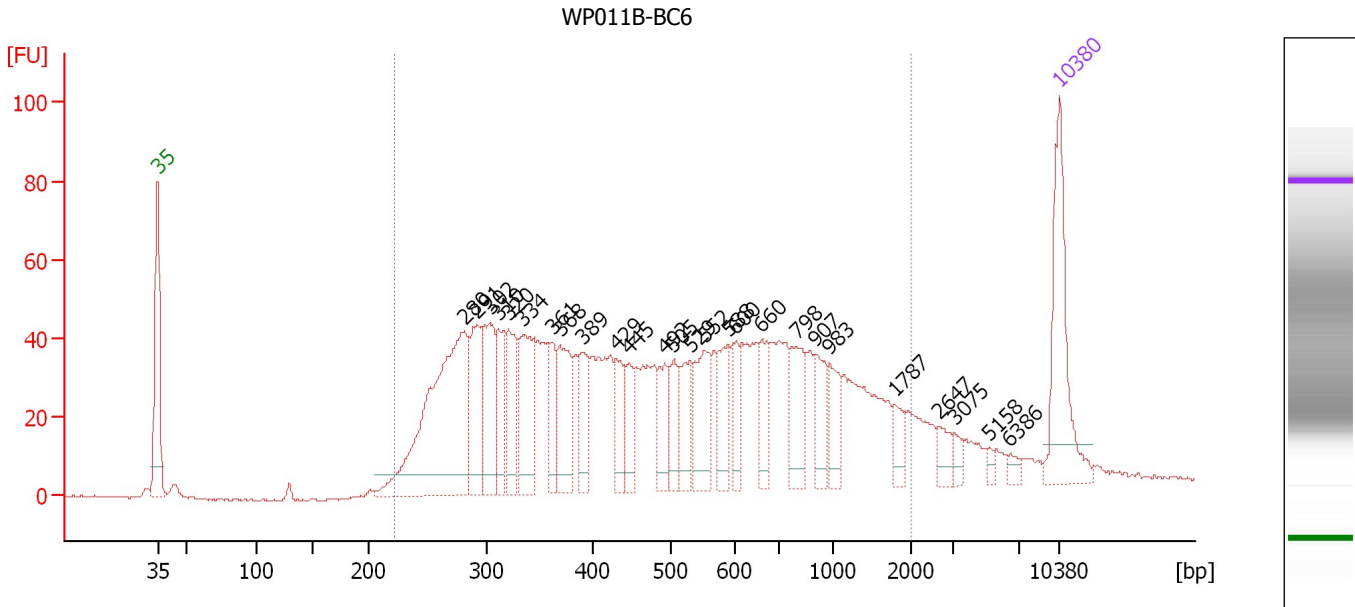
Region table for sample 8 : WP011A-BC5

From [bp]	To [bp]	Average Size [bp]	Molarity [pmol/l]	Conc. [pg/μl]	Corr. Area	% of Total	Size distribution in CV [%]	Color
225	2,625	622	7,218.8	1,951.87	1,955.5	94	72.9	

Assay Class: High Sensitivity DNA Assay
 Data Path: C:\...ents and Settings\Bioanalyzer\2012-08-20\2012-08-20_002.xad

Created: 8/20/2012 3:49:14 PM
 Modified: 8/20/2012 4:32:53 PM

Electropherogram Summary Continued ...



Overall Results for sample 9 : WP011B-BC6

Number of peaks found: 26 Corr. Area 1: 1,651.6
 Noise: 0.3

Peak table for sample 9 : WP011B-BC6

Peak	Size [bp]	Conc. [pg/μl]	Molarity [pmol/l]	Observations
1	35	125.00	5,411.3	Lower Marker
2	280	269.17	1,457.0	
3	291	70.68	368.1	
4	302	80.08	401.6	
5	310	46.52	227.1	
6	320	57.26	270.9	
7	334	72.19	327.8	
8	361	37.55	157.8	
9	368	65.82	270.9	
10	389	41.98	163.4	
11	429	33.48	118.2	
12	445	29.99	102.0	
13	492	34.25	105.5	
14	505	26.85	80.6	
15	529	35.07	100.4	
16	552	52.65	144.5	
17	588	35.80	92.2	
18	600	26.75	67.6	
19	660	34.69	79.6	
20	798	45.05	85.5	
21	907	30.09	50.3	
22	983	27.67	42.6	
23	1,787	15.02	12.7	
24	2,647	12.54	7.2	
25	3,075	7.07	3.5	
26	5,158	4.15	1.2	

Assay Class: High Sensitivity DNA Assay
Data Path: C:\...ents and Settings\Bioanalyzer\2012-08-20\2012-08-20_002.xad

Created: 8/20/2012 3:49:14 PM
Modified: 8/20/2012 4:32:53 PM

Electropherogram Summary Continued ...**... Peak table for sample 9 : WP011B-BC6**

Peak	Size [bp]	Conc. [pg/μl]	Molarity [pmol/l]	Observations
27	6,386	5.43	1.3	
28	▶ 10,380	75.00	10.9	Upper Marker

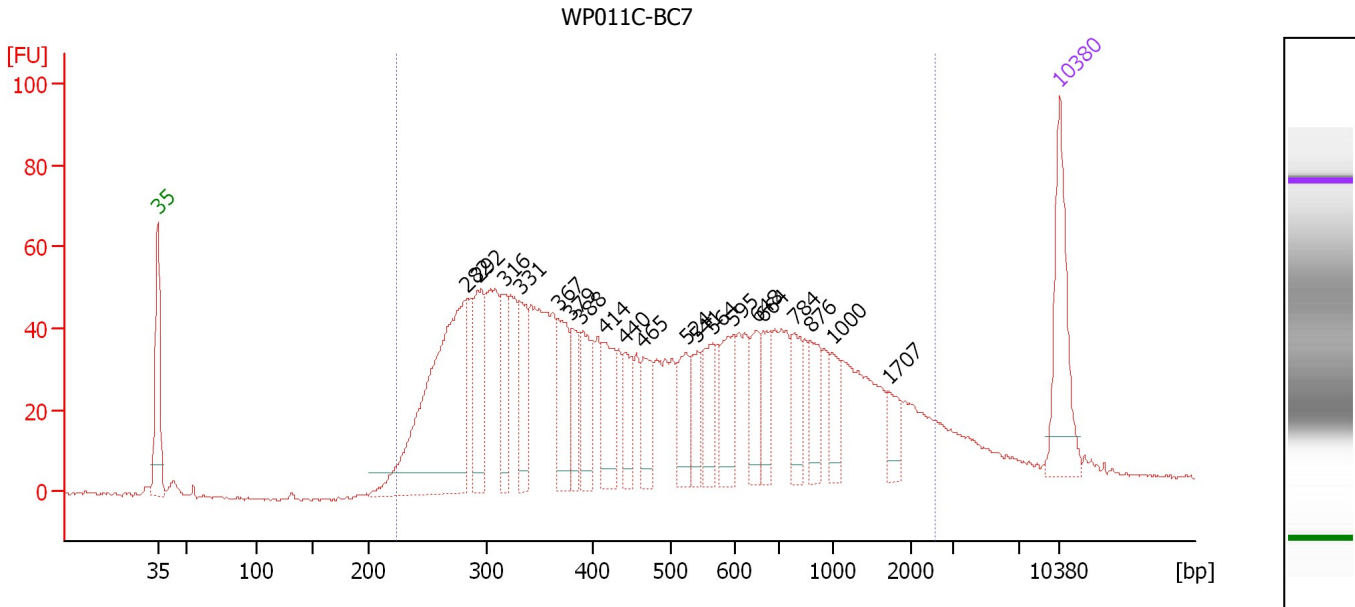
Region table for sample 9 : WP011B-BC6

From [bp]	To [bp]	Average Size [bp]	Molarity [pmol/l]	Conc. [pg/μl]	Corr. Area	% of Total	Size distribution in CV [%]	Color
221	1,986	589	6,189.7	1,686.11	1,651.6	91	62.6	■

Assay Class: High Sensitivity DNA Assay
 Data Path: C:\...ents and Settings\Bioanalyzer\2012-08-20\2012-08-20_002.xad

Created: 8/20/2012 3:49:14 PM
 Modified: 8/20/2012 4:32:53 PM

Electropherogram Summary Continued ...



Overall Results for sample 10 : WP011C-BC7

Number of peaks found: 20 Corr. Area 1: 1,830.7
 Noise: 0.4

Peak table for sample 10 : WP011C-BC7

Peak	Size [bp]	Conc. [pg/μl]	Molarity [pmol/l]	Observations
1	35	125.00	5,411.3	Lower Marker
2	282	338.47	1,819.1	
3	292	84.72	439.6	
4	316	61.38	294.4	
5	331	60.27	276.2	
6	367	66.03	272.8	
7	379	45.94	183.6	
8	388	57.84	225.8	
9	414	62.17	227.3	
10	440	35.52	122.5	
11	465	46.75	152.4	
12	524	44.52	128.8	
13	541	33.63	94.2	
14	564	44.84	120.4	
15	595	55.95	142.5	
16	648	37.58	87.9	
17	664	35.60	81.3	
18	784	39.15	75.6	
19	876	38.55	66.7	
20	1,000	28.09	42.6	
21	1,707	21.20	18.8	
22	10,380	75.00	10.9	Upper Marker

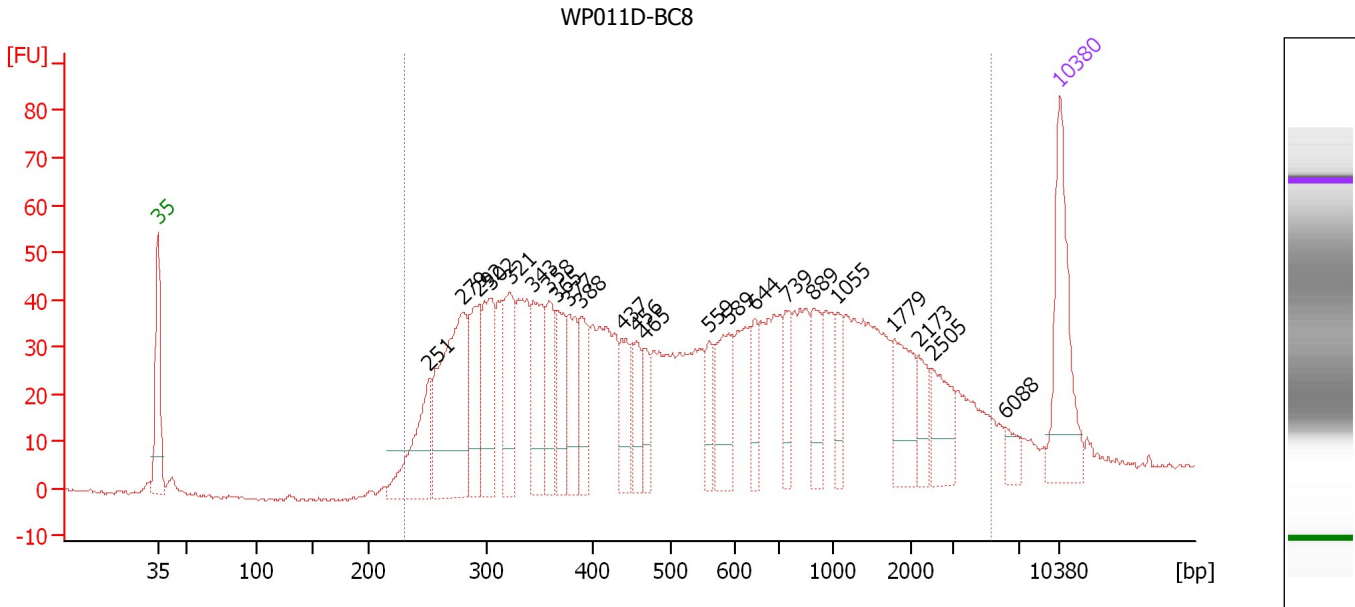
Region table for sample 10 : WP011C-BC7

From [bp]	To [bp]	Average Size [bp]	Molarity [pmol/l]	Conc. [pg/μl]	Corr. Area	% of Total	Size distribution in CV [%]	Color
223	2,547	624	7,885.3	2,137.97	1,830.7	93	72.0	Blue

Assay Class: High Sensitivity DNA Assay
 Data Path: C:\...ents and Settings\Bioanalyzer\2012-08-20\2012-08-20_002.xad

Created: 8/20/2012 3:49:14 PM
 Modified: 8/20/2012 4:32:53 PM

Electropherogram Summary Continued ...



Setpoint Deviations for sample 11 : WP011D-BC8

Height Threshold [FU] : 10

Overall Results for sample 11 : WP011D-BC8

Number of peaks found: 23 Corr. Area 1: 1,705.4
 Noise: 0.3

Peak table for sample 11 : WP011D-BC8

Peak	Size [bp]	Conc. [pg/μl]	Molarity [pmol/l]	Observations
1	35	125.00	5,411.3	Lower Marker
2	251	87.29	527.9	
3	279	186.00	1,008.3	
4	292	72.64	376.5	
5	302	84.89	425.6	
6	321	75.28	354.9	
7	343	78.84	347.8	
8	358	52.53	222.1	
9	365	52.77	219.0	
10	377	50.05	201.2	
11	388	45.16	176.2	
12	437	39.56	137.1	
13	456	29.06	96.5	
14	465	27.74	90.3	
15	559	25.27	68.5	
16	589	52.64	135.3	
17	644	27.30	64.2	
18	739	28.29	58.0	
19	889	38.10	64.9	
20	1,055	23.75	34.1	
21	1,779	49.55	42.2	
22	2,173	19.55	13.6	

Assay Class: High Sensitivity DNA Assay
 Data Path: C:\...ents and Settings\Bioanalyzer\2012-08-20\2012-08-20_002.xad

Created: 8/20/2012 3:49:14 PM
 Modified: 8/20/2012 4:32:53 PM

Electropherogram Summary Continued ...

... Peak table for sample 11 : WP011D-BC8

Peak	Size [bp]	Conc. [pg/μl]	Molarity [pmol/l]	Observations
23	2,505	36.99	22.4	
24	6,088	12.16	3.0	
25	10,380	75.00	10.9	Upper Marker

Region table for sample 11 : WP011D-BC8

From [bp]	To [bp]	Average Size [bp]	Molarity [pmol/l]	Conc. [pg/μl]	Corr. Area	% of Total	Size distribution in CV [%]	Color
230	5,274	862	6,527.5	1,929.27	1,705.4	95	99.0	■

Assay Class: High Sensitivity DNA Assay
Data Path: C:\...ents and Settings\Bioanalyzer\2012-08-20\2012-08-20_002.xad

Created: 8/20/2012 3:49:14 PM
Modified: 8/20/2012 4:32:53 PM

Gel Image

