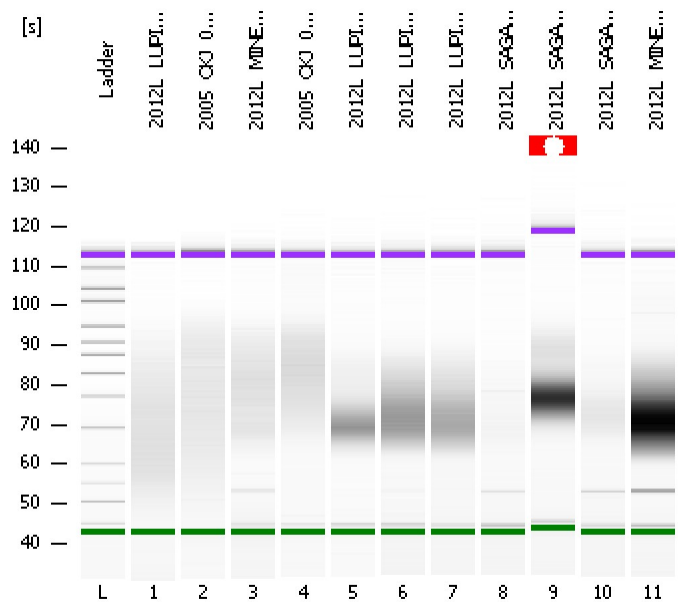


Assay Class: High Sensitivity DNA Assay  
Data Path: C:\...ents and Settings\Bioanalyzer\2012-08-21\2012-08-21\_003.xad

Created: 8/21/2012 10:24:26 AM  
Modified: 8/21/2012 11:11:08 AM

**Electrophoresis File Run Summary**



Instrument Information:  
 Instrument Name: DE13701086      Firmware: C.01.069  
 Serial#: DE13701086      Type: G2938B

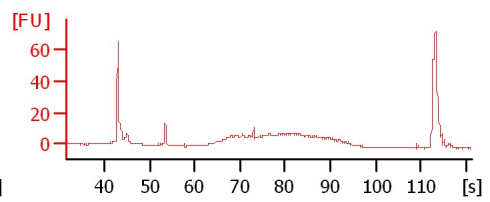
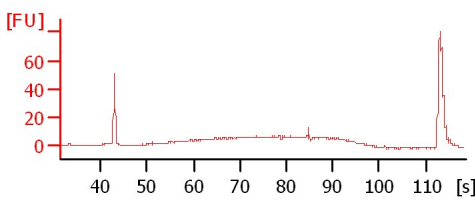
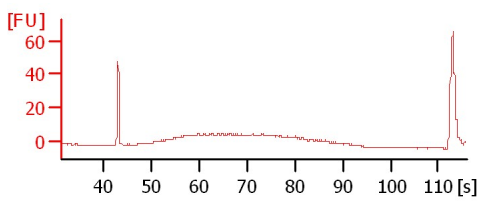
Assay Information:  
 Assay Origin Path: C:\Program Files\Agilent\2100 bioanalyzer\2100 expert\assays\dsDNA\High Sensitivity DNA.xsy  
 Assay Class: High Sensitivity DNA Assay  
 Version: 1.03  
 Assay Comments: Copyright © 2003-2010 Agilent Technologies

Chip Information:  
 Chip Lot #:   
 Reagent Kit Lot #:   
 Chip Comments:

2012L\_LUPI\_074\_7x15s90s

2005\_OKJ\_051\_7x15s90s

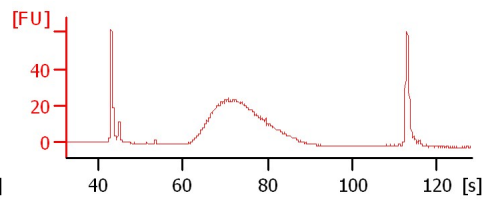
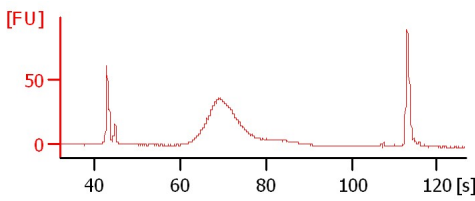
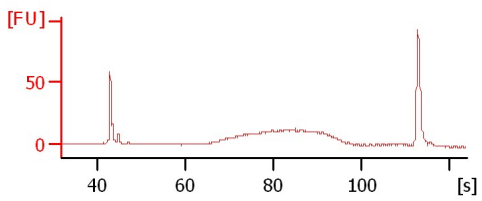
2012L\_MINE\_109\_NoShear



2005\_OKJ\_047\_NoShear

2012L\_LUPI\_024\_NoShear

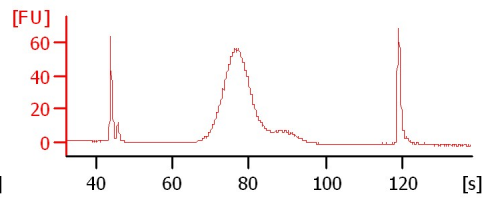
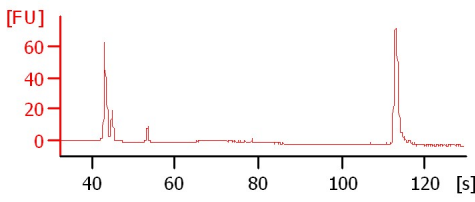
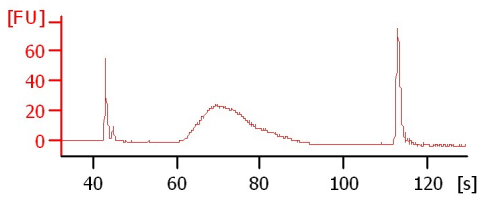
2012L\_LUPI\_082\_NoShear



2012L\_LUPI\_001\_NoShear

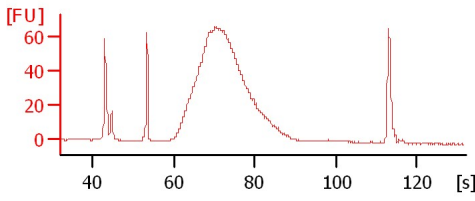
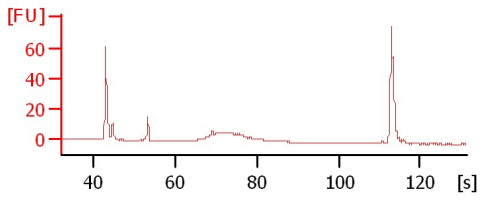
2012L\_SAGA\_135\_NoShear

2012L\_SAGA\_141\_NoShear



2012L\_SAGA\_106\_NoShear

2012L\_MINE\_003\_NoShear



Assay Class: High Sensitivity DNA Assay  
Data Path: C:\...ents and Settings\Bioanalyzer\2012-08-21\2012-08-21\_003.xad

Created: 8/21/2012 10:24:26 AM  
Modified: 8/21/2012 11:11:08 AM

**Electrophoresis File Run Summary (Chip Summary)**

Sample Name	Sample Comment	Rest. Digest	Status	Observation	Result Label	Result Color
2012L_LUPI_074_7x15s90s		<input type="checkbox"/>	✓			
2005_OKJ_051_7x15s90s		<input type="checkbox"/>	✓			
2012L_MINE_109_NoShear		<input type="checkbox"/>	✓			
2005_OKJ_047_NoShear		<input type="checkbox"/>	✓			
2012L_LUPI_024_NoShear		<input type="checkbox"/>	✓			
2012L_LUPI_082_NoShear		<input type="checkbox"/>	✓			
2012L_LUPI_001_NoShear		<input type="checkbox"/>	✓			
2012L_SAGA_135_NoShear		<input type="checkbox"/>	✓			
2012L_SAGA_141_NoShear		<input type="checkbox"/>	✓			
2012L_SAGA_106_NoShear		<input type="checkbox"/>	✓			
2012L_MINE_003_NoShear		<input type="checkbox"/>	✓			
Ladder		<input type="checkbox"/>	✓			

**Chip Lot #****Reagent Kit Lot #****Chip Comments :**

Assay Class: High Sensitivity DNA Assay  
Data Path: C:\...ents and Settings\Bioanalyzer\2012-08-21\2012-08-21\_003.xad

Created: 8/21/2012 10:24:26 AM  
Modified: 8/21/2012 11:11:08 AM

**Electrophoresis Assay Details**

**General Analysis Settings**

Number of Available Sample and Ladder Wells (Max.) : 12  
Minimum Visible Range [s] : 32  
Maximum Visible Range [s] : 138  
Start Analysis Time Range [s] : 33  
End Analysis Time Range [s] : 137.5  
Ladder Concentration [pg/μl] : 1950  
Uses Standard Area for Ladder Fragments  
Lower Marker Concentration [pg/μl] : 125  
Upper Marker Concentration [pg/μl] : 75  
Used Upper Marker for Quantitation  
Standard Curve Fit is Point to Point  
Show Data Aligned to Lower and Upper Marker

**Integrator Settings**

Integration Start Time [s] : 33.05  
Integration End Time [s] : 137  
Slope Threshold : 0.8  
Height Threshold [FU] : 5  
Area Threshold : 0.1  
Width Threshold [s] : 0.6  
Baseline Plateau [s] : 0.5

**Filter Settings**

Filter Width [s] : 0.5  
Polynomial Order : 4

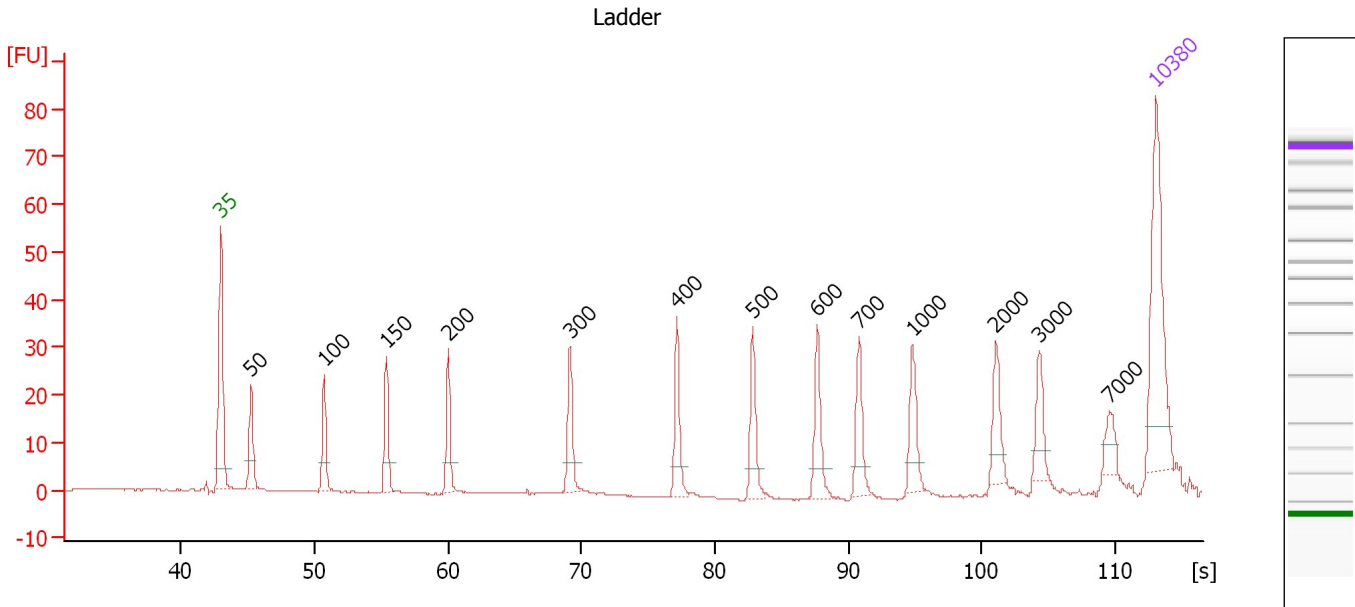
**Ladder**

Ladder Peak	Size	Area
1	35	160
2	50	210
3	100	208
4	150	221
5	200	242
6	300	270
7	400	305
8	500	306
9	600	336
10	700	321
11	1000	366
12	2000	413
13	3000	411
14	7000	400
15	10380	214

Assay Class: High Sensitivity DNA Assay  
 Data Path: C:\...ents and Settings\Bioanalyzer\2012-08-21\2012-08-21\_003.xad

Created: 8/21/2012 10:24:26 AM  
 Modified: 8/21/2012 11:11:08 AM

**Electropherogram Summary**



**Overall Results for Ladder**

Noise: 0.1

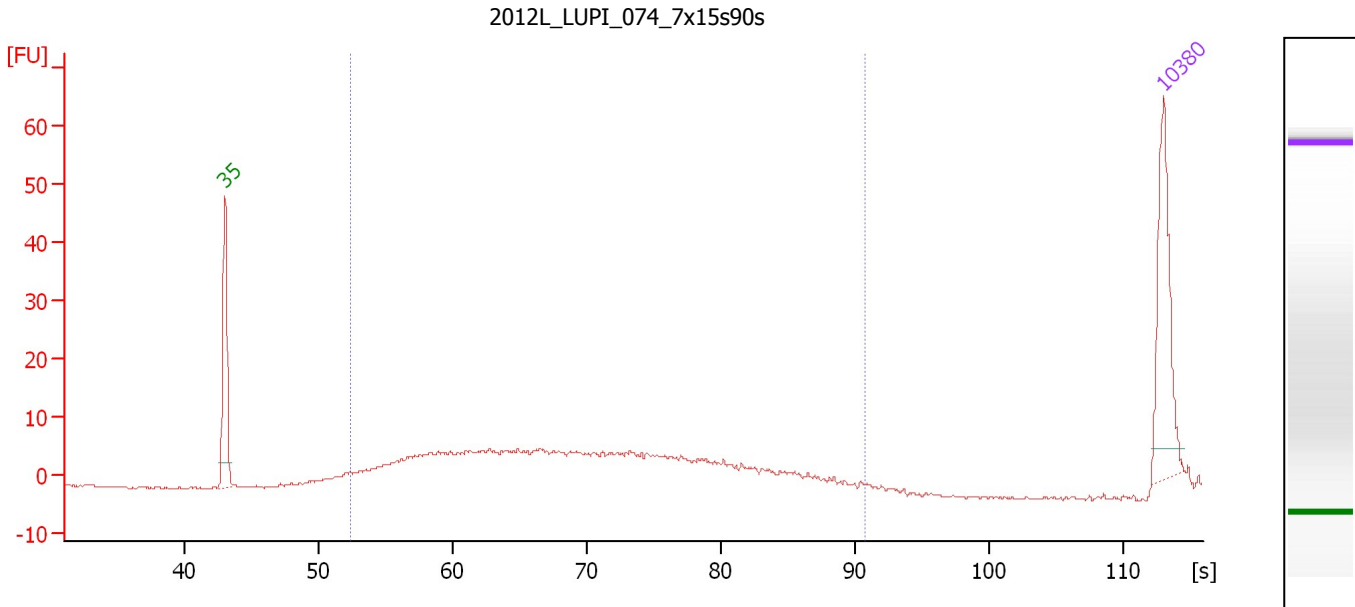
**Peak table for Ladder**

Peak	Size [bp]	Conc. [pg/μl]	Molarity [pmol/l]	Observations
1	35	125.00	5,411.3	Lower Marker
2	50	150.00	4,545.5	Ladder Peak
3	100	150.00	2,272.7	Ladder Peak
4	150	150.00	1,515.2	Ladder Peak
5	200	150.00	1,136.4	Ladder Peak
6	300	150.00	757.6	Ladder Peak
7	400	150.00	568.2	Ladder Peak
8	500	150.00	454.5	Ladder Peak
9	600	150.00	378.8	Ladder Peak
10	700	150.00	324.7	Ladder Peak
11	1,000	150.00	227.3	Ladder Peak
12	2,000	150.00	113.6	Ladder Peak
13	3,000	150.00	75.8	Ladder Peak
14	7,000	150.00	32.5	Ladder Peak
15	10,380	75.00	10.9	Upper Marker

Assay Class: High Sensitivity DNA Assay  
 Data Path: C:\...ents and Settings\Bioanalyzer\2012-08-21\2012-08-21\_003.xad

Created: 8/21/2012 10:24:26 AM  
 Modified: 8/21/2012 11:11:08 AM

**Electropherogram Summary Continued ...**



**Overall Results for sample 1 : 2012L LUPI 074 7x15s90s**

Number of peaks found: 0                      Corr. Area 1: 178.9  
 Noise: 0.2

**Peak table for sample 1 : 2012L LUPI 074 7x15s90s**

Peak	Size [bp]	Conc. [pg/μl]	Molarity [pmol/l]	Observations
1	35	125.00	5,411.3	Lower Marker
2	10,380	75.00	10.9	Upper Marker

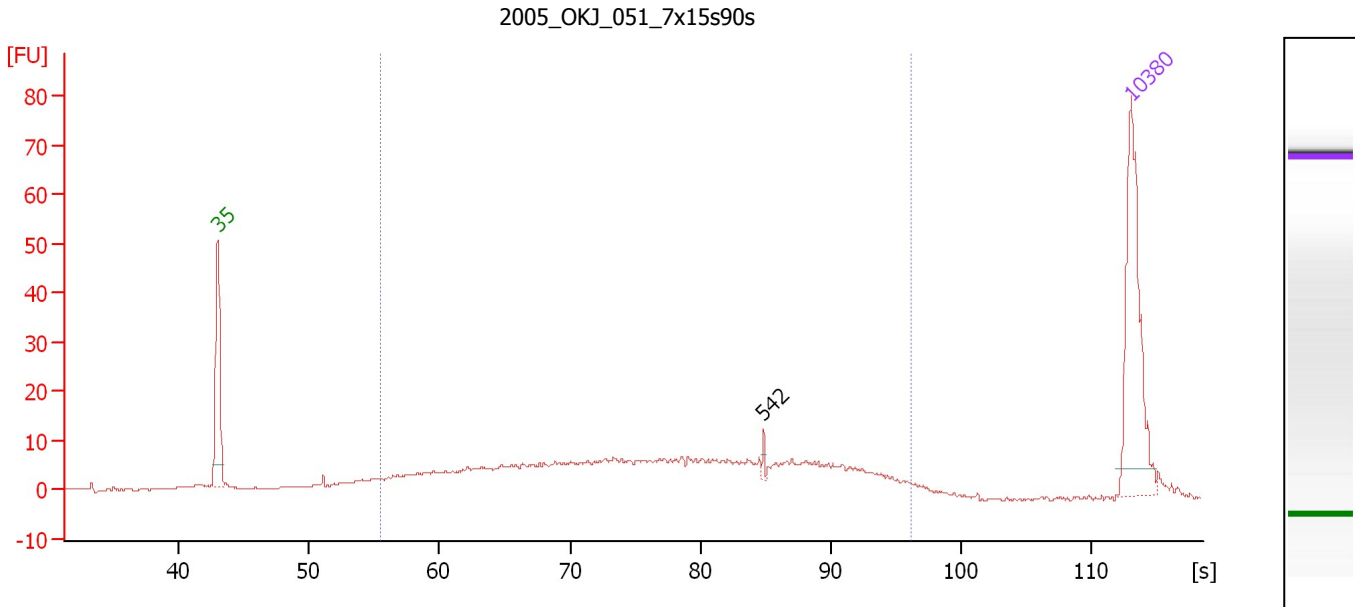
**Region table for sample 1 : 2012L LUPI 074 7x15s90s**

From [bp]	To [bp]	Average Size [bp]	Molarity [pmol/l]	Conc. [pg/μl]	Corr. Area	% of Total	Size distribution in CV [%]	Color
118	697	324	1,946.0	344.35	178.9	100	34.7	Blue

Assay Class: High Sensitivity DNA Assay  
 Data Path: C:\...ents and Settings\Bioanalyzer\2012-08-21\2012-08-21\_003.xad

Created: 8/21/2012 10:24:26 AM  
 Modified: 8/21/2012 11:11:08 AM

**Electropherogram Summary Continued ...**



**Overall Results for sample 2 : 2005 OKJ 051 7x15s90s**

Number of peaks found: 1                      Corr. Area 1: 314.6  
 Noise: 0.3

**Peak table for sample 2 : 2005 OKJ 051 7x15s90s**

Peak	Size [bp]	Conc. [pg/μl]	Molarity [pmol/l]	Observations
1	35	125.00	5,411.3	Lower Marker
2	542	3.74	10.5	
3	10,380	75.00	10.9	Upper Marker

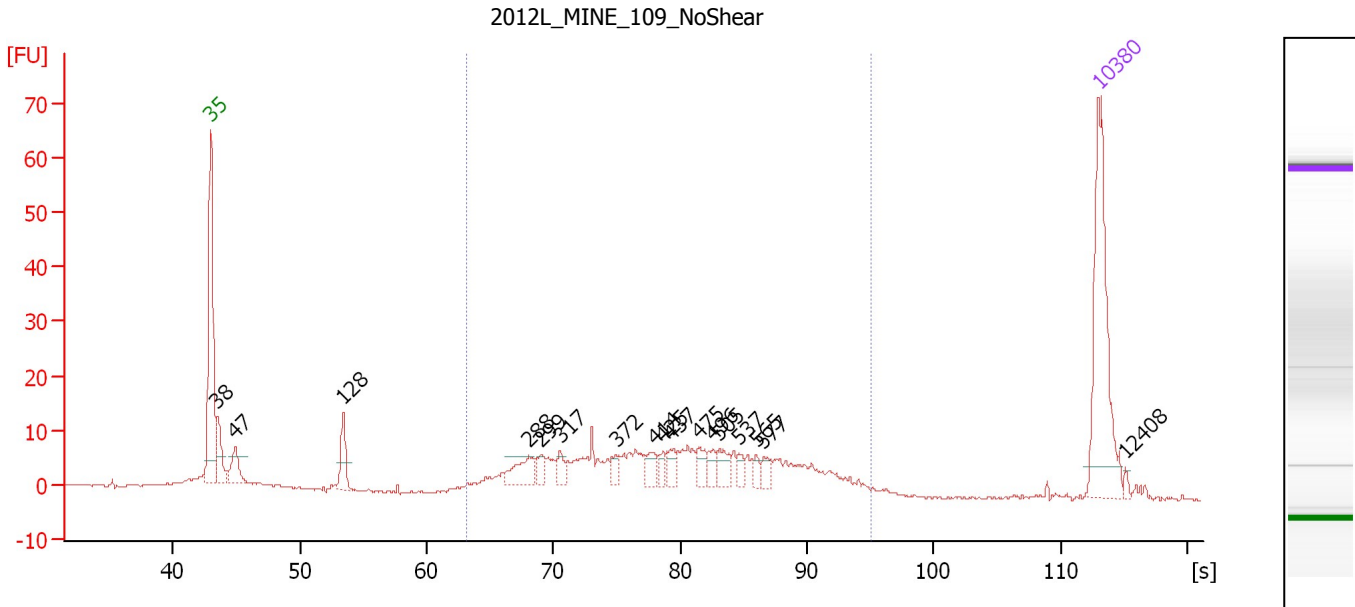
**Region table for sample 2 : 2005 OKJ 051 7x15s90s**

From [bp]	To [bp]	Average Size [bp]	Molarity [pmol/l]	Conc. [pg/μl]	Corr. Area	% of Total	Size distribution in CV [%]	Color
151	1,212	442	1,859.8	401.51	314.6	88	45.7	Blue

Assay Class: High Sensitivity DNA Assay  
 Data Path: C:\...ents and Settings\Bioanalyzer\2012-08-21\2012-08-21\_003.xad

Created: 8/21/2012 10:24:26 AM  
 Modified: 8/21/2012 11:11:08 AM

**Electropherogram Summary Continued ...**



**Overall Results for sample 3 : 2012L MINE 109 NoShear**

Number of peaks found: 17                      Corr. Area 1: 237.2  
 Noise: 0.2

**Peak table for sample 3 : 2012L MINE 109 NoShear**

Peak	Size [bp]	Conc. [pg/μl]	Molarity [pmol/l]	Observations
1	35	125.00	5,411.3	Lower Marker
2	38	29.19	1,154.0	
3	47	22.48	717.6	
4	128	23.83	281.0	
5	288	19.96	105.0	
6	299	8.15	41.4	
7	317	8.71	41.6	
8	372	5.71	23.3	
9	414	10.53	38.5	
10	425	6.45	23.0	
11	437	9.98	34.6	
12	475	10.57	33.7	
13	496	8.11	24.8	
14	505	11.61	34.8	
15	537	5.62	15.8	
16	565	4.87	13.1	
17	577	6.49	17.0	
18	10,380	75.00	10.9	Upper Marker
19	12,408	0.00	0.0	

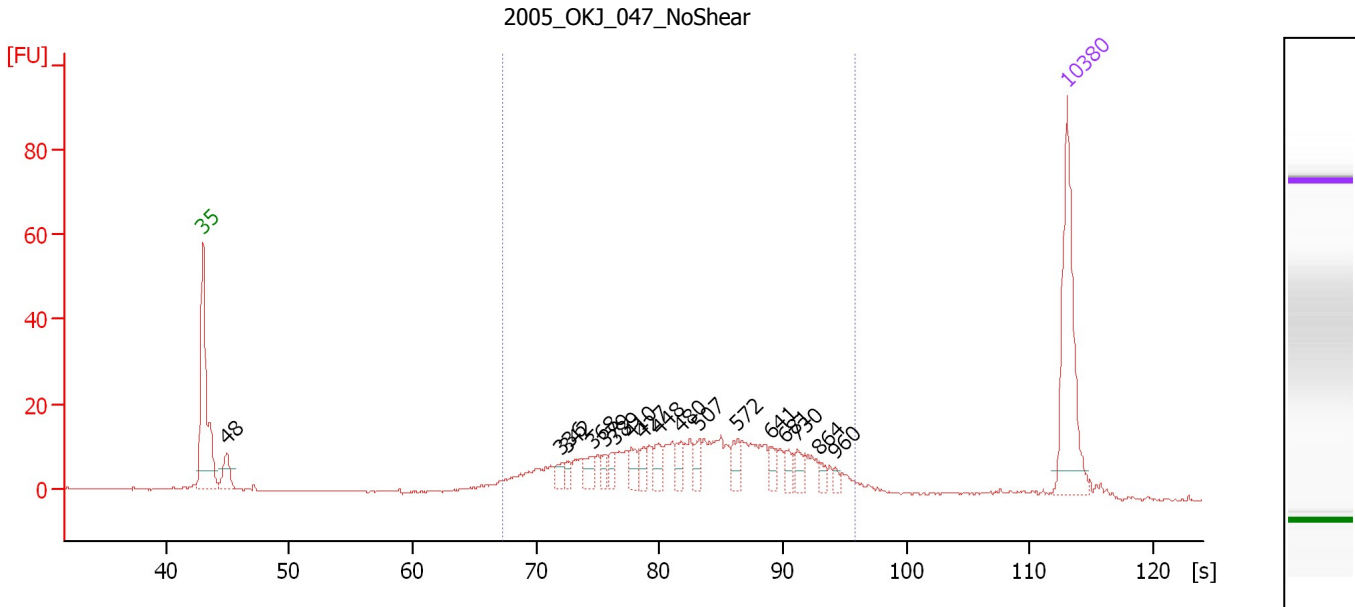
**Region table for sample 3 : 2012L MINE 109 NoShear**

From [bp]	To [bp]	Average Size [bp]	Molarity [pmol/l]	Conc. [pg/μl]	Corr. Area	% of Total	Size distribution in CV [%]	Color
233	1,046	465	1,230.6	327.41	237.2	78	32.9	Blue

Assay Class: High Sensitivity DNA Assay  
 Data Path: C:\...ents and Settings\Bioanalyzer\2012-08-21\2012-08-21\_003.xad

Created: 8/21/2012 10:24:26 AM  
 Modified: 8/21/2012 11:11:08 AM

**Electropherogram Summary Continued ...**



**Overall Results for sample 4 : 2005 OKJ 047 NoShear**

Number of peaks found: 17                      Corr. Area 1: 344.8  
 Noise: 0.1

**Peak table for sample 4 : 2005 OKJ 047 NoShear**

Peak	Size [bp]	Conc. [pg/μl]	Molarity [pmol/l]	Observations
1	35	125.00	5,411.3	Lower Marker
2	48	25.11	800.5	
3	336	9.02	40.7	
4	342	7.08	31.4	
5	368	12.59	51.8	
6	379	8.34	33.3	
7	389	9.22	35.9	
8	410	13.26	49.1	
9	427	9.91	35.1	
10	448	12.87	43.5	
11	480	11.69	36.9	
12	507	11.85	35.4	
13	572	13.46	35.6	
14	641	8.61	20.4	
15	681	10.15	22.6	
16	730	10.20	21.2	
17	864	4.90	8.6	
18	960	3.77	6.0	
19	10,380	75.00	10.9	Upper Marker

**Region table for sample 4 : 2005 OKJ 047 NoShear**

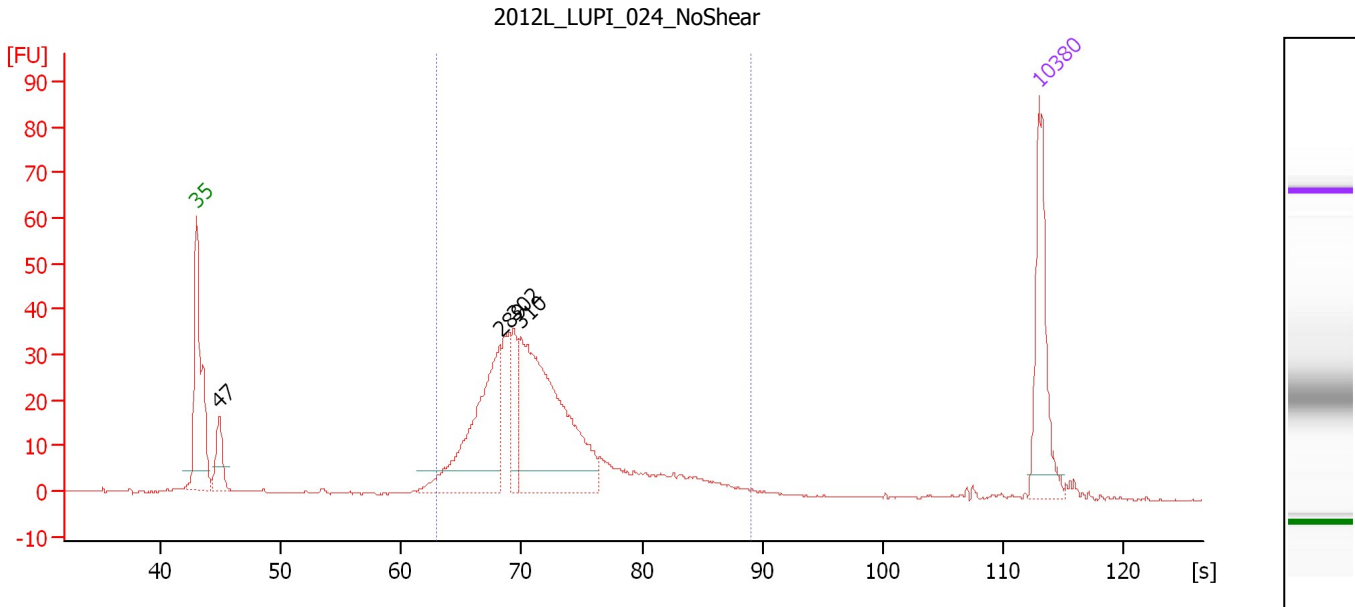
From [bp]	To [bp]	Average Size [bp]	Molarity [pmol/l]	Conc. [pg/μl]	Corr. Area	% of Total	Size distribution in CV [%]	Color
278	1,174	531	1,391.9	426.39	344.8	84	32.9	Blue



Assay Class: High Sensitivity DNA Assay  
 Data Path: C:\...ents and Settings\Bioanalyzer\2012-08-21\2012-08-21\_003.xad

Created: 8/21/2012 10:24:26 AM  
 Modified: 8/21/2012 11:11:08 AM

**Electropherogram Summary Continued ...**



**Overall Results for sample 5 : 2012L\_LUPI\_024\_NoShear**

Number of peaks found: 4                      Corr. Area 1: 487.7  
 Noise: 0.2

**Peak table for sample 5 : 2012L\_LUPI\_024\_NoShear**

Peak	Size [bp]	Conc. [pg/μl]	Molarity [pmol/l]	Observations
1	35	125.00	5,411.3	Lower Marker
2	47	47.04	1,507.8	
3	289	195.15	1,021.7	
4	302	48.42	242.6	
5	310	302.60	1,480.6	
6	10,380	75.00	10.9	Upper Marker

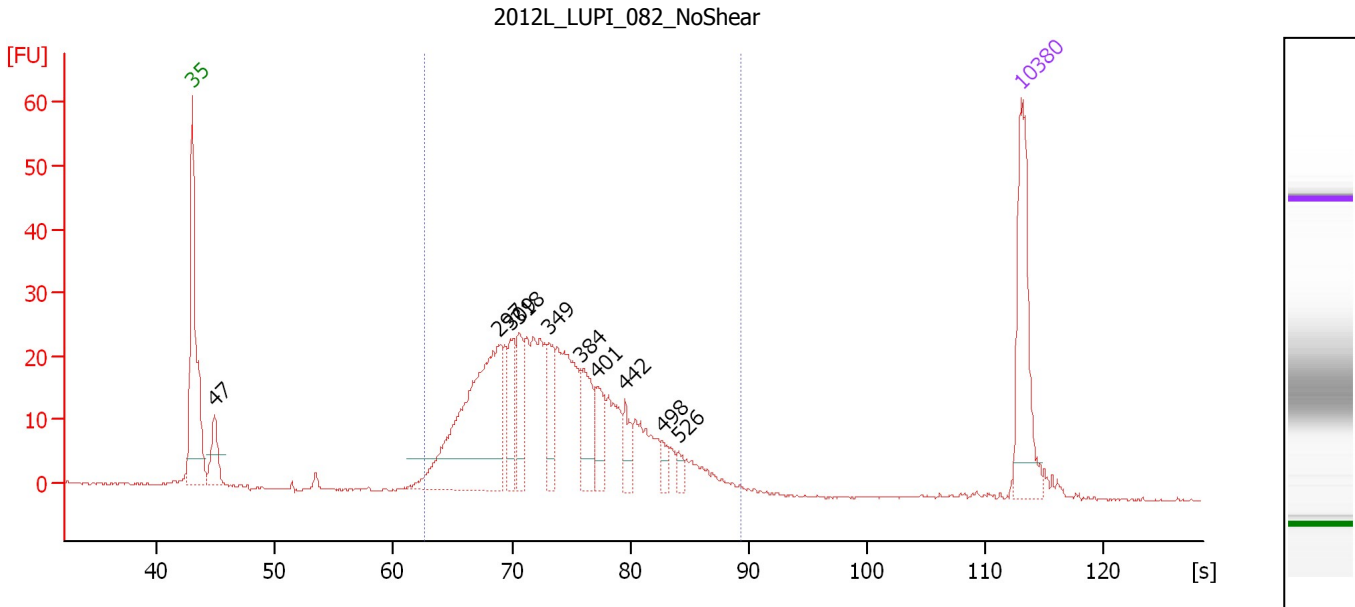
**Region table for sample 5 : 2012L\_LUPI\_024\_NoShear**

From [bp]	To [bp]	Average Size [bp]	Molarity [pmol/l]	Conc. [pg/μl]	Corr. Area	% of Total	Size distribution in CV [%]	Color
233	645	339	3,281.4	695.15	487.7	90	22.0	Blue

Assay Class: High Sensitivity DNA Assay  
 Data Path: C:\...ents and Settings\Bioanalyzer\2012-08-21\2012-08-21\_003.xad

Created: 8/21/2012 10:24:26 AM  
 Modified: 8/21/2012 11:11:08 AM

**Electropherogram Summary Continued ...**



**Overall Results for sample 6 : 2012L\_LUPI\_082\_NoShear**

Number of peaks found: 10                      Corr. Area 1: 501.6  
 Noise: 0.1

**Peak table for sample 6 : 2012L\_LUPI\_082\_NoShear**

Peak	Size [bp]	Conc. [pg/μl]	Molarity [pmol/l]	Observations
1	35	125.00	5,411.3	Lower Marker
2	47	43.29	1,381.8	
3	297	256.36	1,309.9	
4	309	44.34	217.4	
5	318	44.52	212.0	
6	349	41.93	181.9	
7	384	47.74	188.4	
8	401	32.38	122.3	
9	442	21.42	73.4	
10	498	9.47	28.8	
11	526	8.61	24.8	
12	10,380	75.00	10.9	Upper Marker

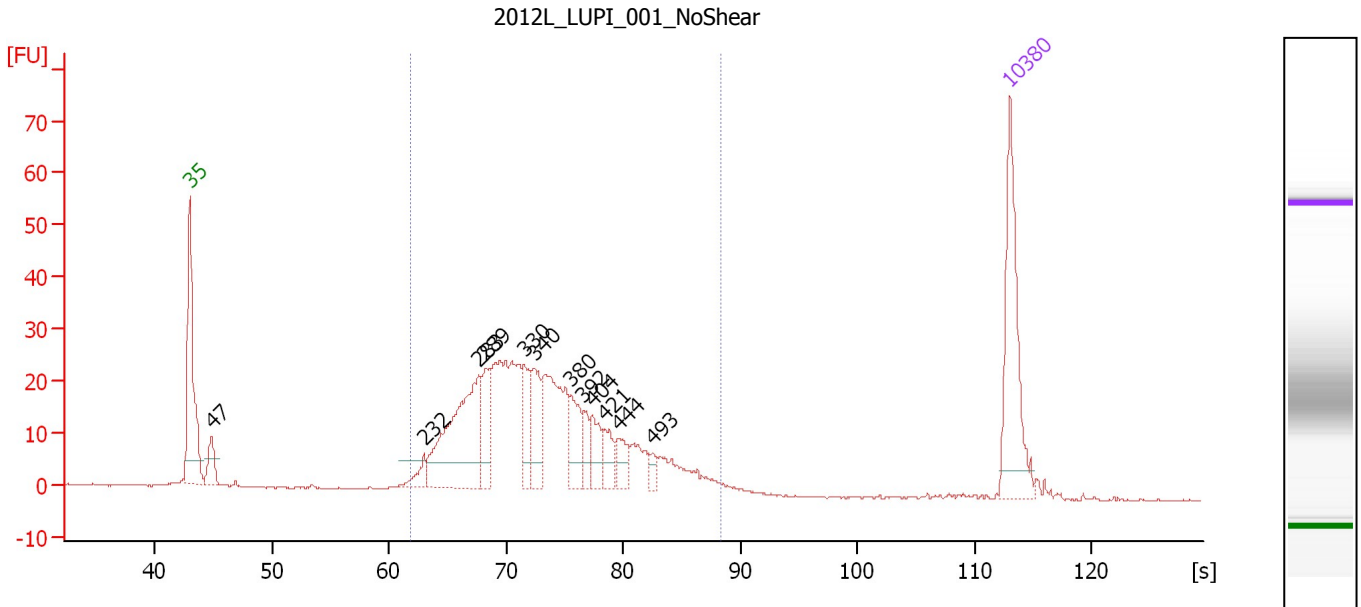
**Region table for sample 6 : 2012L\_LUPI\_082\_NoShear**

From [bp]	To [bp]	Average Size [bp]	Molarity [pmol/l]	Conc. [pg/μl]	Corr. Area	% of Total	Size distribution in CV [%]	Color
228	652	363	3,987.3	894.97	501.6	94	22.2	Blue

Assay Class: High Sensitivity DNA Assay  
 Data Path: C:\...ents and Settings\Bioanalyzer\2012-08-21\2012-08-21\_003.xad

Created: 8/21/2012 10:24:26 AM  
 Modified: 8/21/2012 11:11:08 AM

**Electropherogram Summary Continued ...**



**Overall Results for sample 7 : 2012L\_LUPI\_001\_NoShear**

Number of peaks found: 12                      Corr. Area 1: 509.9  
 Noise: 0.2

**Peak table for sample 7 : 2012L\_LUPI\_001\_NoShear**

Peak	Size [bp]	Conc. [pg/μl]	Molarity [pmol/l]	Observations
1	35	125.00	5,411.3	Lower Marker
2	47	26.10	841.3	
3	232	15.20	99.2	
4	283	149.88	801.2	
5	289	38.81	203.1	
6	330	38.22	175.6	
7	340	40.27	179.7	
8	380	34.24	136.7	
9	392	17.07	65.9	
10	404	23.25	87.3	
11	421	19.12	68.9	
12	444	17.25	58.8	
13	493	6.73	20.7	
14	10,380	75.00	10.9	Upper Marker

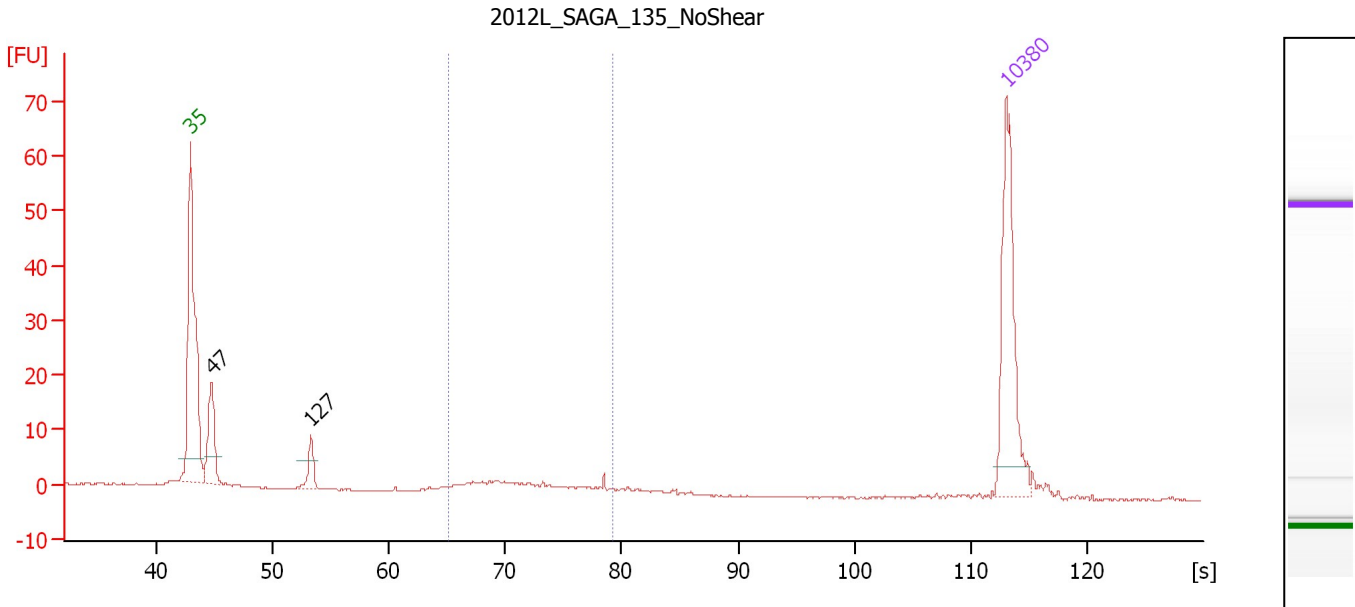
**Region table for sample 7 : 2012L\_LUPI\_001\_NoShear**

From [bp]	To [bp]	Average Size [bp]	Molarity [pmol/l]	Conc. [pg/μl]	Corr. Area	% of Total	Size distribution in CV [%]	Color
219	620	354	3,369.4	736.46	509.9	93	22.9	Blue

Assay Class: High Sensitivity DNA Assay  
 Data Path: C:\...ents and Settings\Bioanalyzer\2012-08-21\2012-08-21\_003.xad

Created: 8/21/2012 10:24:26 AM  
 Modified: 8/21/2012 11:11:08 AM

**Electropherogram Summary Continued ...**



**Overall Results for sample 8 : 2012L\_SAGA\_135\_NoShear**

Number of peaks found: 2                      Corr. Area 1: 22.3  
 Noise: 0.1

**Peak table for sample 8 : 2012L\_SAGA\_135\_NoShear**

Peak	Size [bp]	Conc. [pg/μl]	Molarity [pmol/l]	Observations
1	35	125.00	5,411.3	Lower Marker
2	47	55.70	1,804.6	
3	127	18.45	219.3	
4	10,380	75.00	10.9	Upper Marker

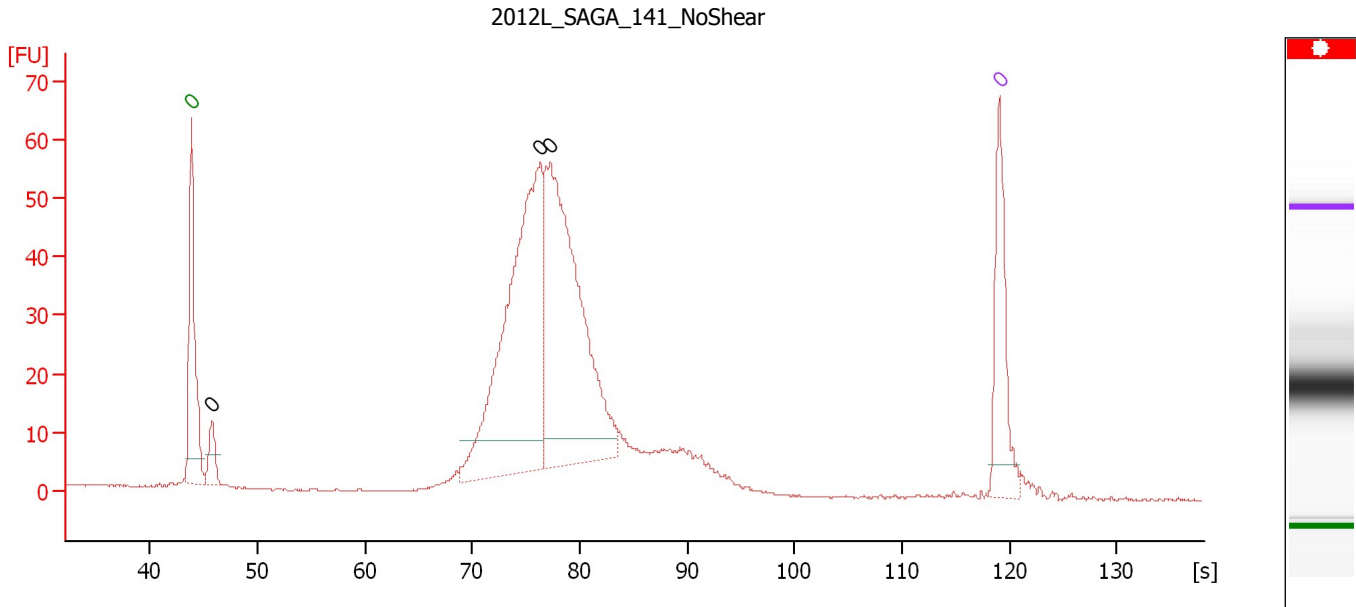
**Region table for sample 8 : 2012L\_SAGA\_135\_NoShear**

From [bp]	To [bp]	Average Size [bp]	Molarity [pmol/l]	Conc. [pg/μl]	Corr. Area	% of Total	Size distribution in CV [%]	Color
256	437	333	153.4	32.75	22.3	29	14.6	Blue

Assay Class: High Sensitivity DNA Assay  
 Data Path: C:\...ents and Settings\Bioanalyzer\2012-08-21\2012-08-21\_003.xad

Created: 8/21/2012 10:24:26 AM  
 Modified: 8/21/2012 11:11:08 AM

**Electropherogram Summary Continued ...**



**Setpoint Deviations for sample 9 : 2012L SAGA 141 NoShear**

End Analysis Time Range [s] : 106.05

**Overall Results for sample 9 : 2012L SAGA 141 NoShear**

Number of peaks found: 3                      Noise: 0.1

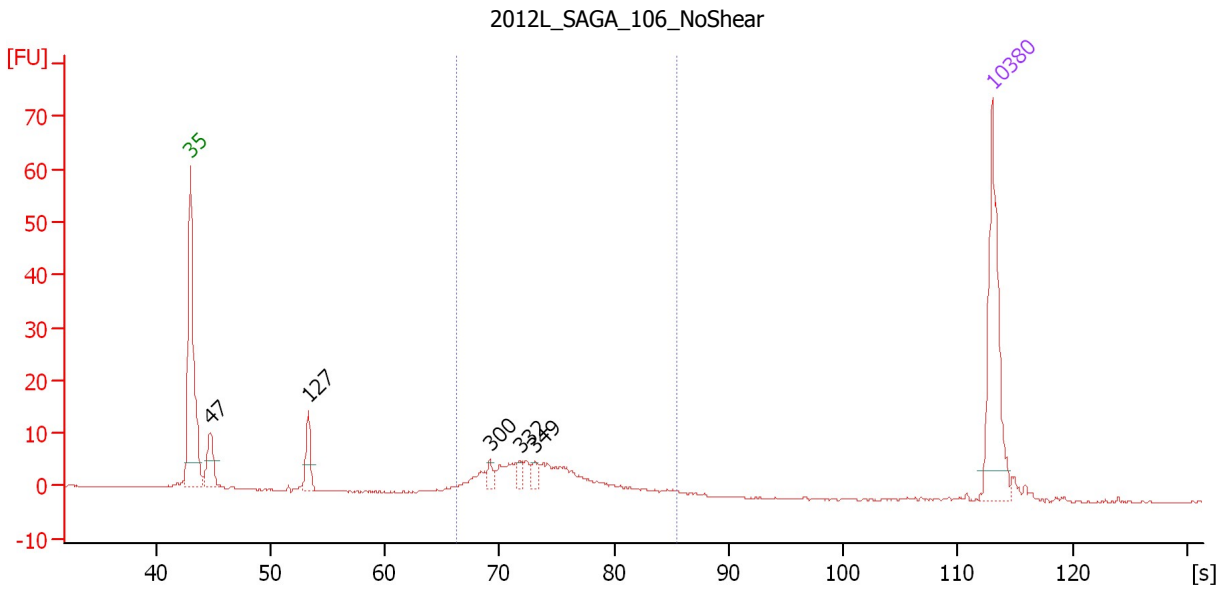
**Peak table for sample 9 : 2012L SAGA 141 NoShear**

Peak	Size [bp]	Conc. [pg/μl]	Molarity [pmol/l]	Observations
1	0	125.00	0.0	Lower Marker
2	0	55.62	0.0	
3	0	882.86	0.0	
4	0	853.63	0.0	
5	0	75.00	0.0	Upper Marker

Assay Class: High Sensitivity DNA Assay  
 Data Path: C:\...ents and Settings\Bioanalyzer\2012-08-21\2012-08-21\_003.xad

Created: 8/21/2012 10:24:26 AM  
 Modified: 8/21/2012 11:11:08 AM

**Electropherogram Summary Continued ...**



**Overall Results for sample 10 : 2012L\_SAGA\_106\_NoShear**

Number of peaks found: 5                      Corr. Area 1: 81.5  
 Noise: 0.1

**Peak table for sample 10 : 2012L\_SAGA\_106\_NoShear**

Peak	Size [bp]	Conc. [pg/μl]	Molarity [pmol/l]	Observations
1	35	125.00	5,411.3	Lower Marker
2	47	37.37	1,213.6	
3	127	29.49	350.9	
4	300	7.56	38.2	
5	332	7.74	35.3	
6	349	7.63	33.1	
7	10,380	75.00	10.9	Upper Marker

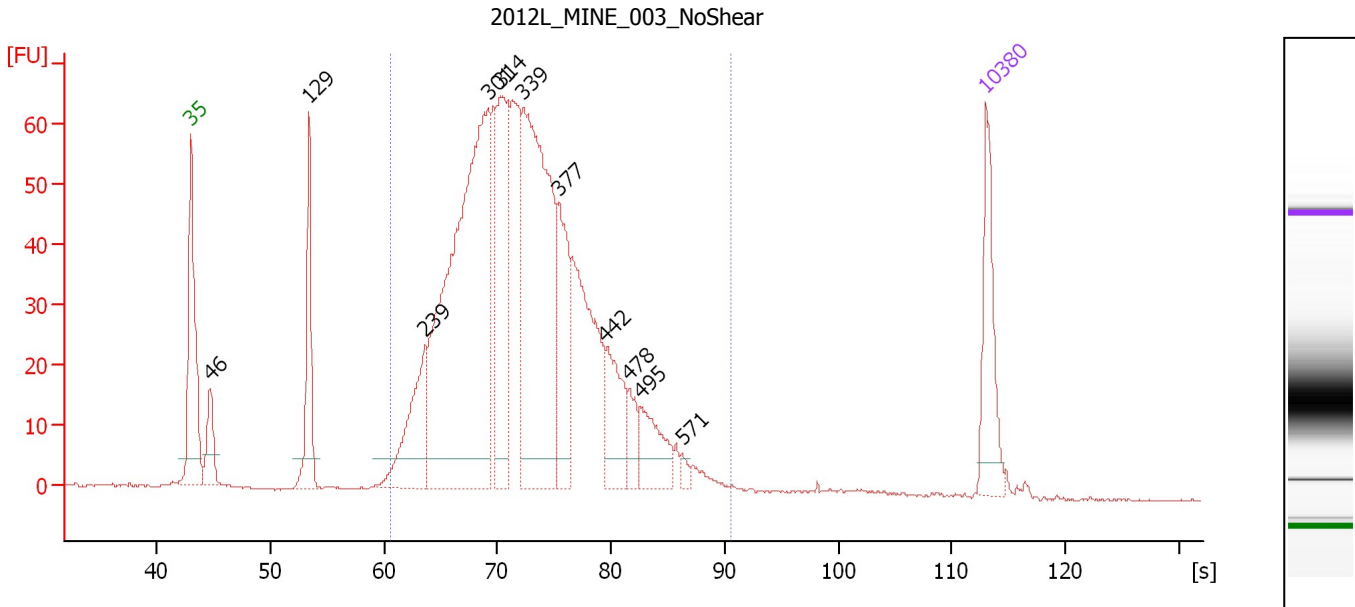
**Region table for sample 10 : 2012L\_SAGA\_106\_NoShear**

From [bp]	To [bp]	Average Size [bp]	Molarity [pmol/l]	Conc. [pg/μl]	Corr. Area	% of Total	Size distribution in CV [%]	Color
268	554	360	598.6	138.17	81.5	67	16.1	Blue

Assay Class: High Sensitivity DNA Assay  
 Data Path: C:\...ents and Settings\Bioanalyzer\2012-08-21\2012-08-21\_003.xad

Created: 8/21/2012 10:24:26 AM  
 Modified: 8/21/2012 11:11:08 AM

**Electropherogram Summary Continued ...**



**Overall Results for sample 11 : 2012L\_MINE\_003\_NoShear**

Number of peaks found: 11                      Corr. Area 1: 1,276.0  
 Noise: 0.1

**Peak table for sample 11 : 2012L\_MINE\_003\_NoShear**

Peak	Size [bp]	Conc. [pg/μl]	Molarity [pmol/l]	Observations
1	35	125.00	5,411.3	Lower Marker
2	46	63.57	2,087.8	
3	129	138.46	1,628.9	
4	239	141.63	897.9	
5	301	722.78	3,641.7	
6	314	224.44	1,084.0	
7	339	468.31	2,092.4	
8	377	135.24	543.6	
9	442	89.45	306.9	
10	478	31.30	99.1	
11	495	68.03	208.2	
12	571	8.29	22.0	
13	10,380	75.00	10.9	Upper Marker

**Region table for sample 11 : 2012L\_MINE\_003\_NoShear**

From [bp]	To [bp]	Average Size [bp]	Molarity [pmol/l]	Conc. [pg/μl]	Corr. Area	% of Total	Size distribution in CV [%]	Color
206	695	347	11,302.8	2,426.03	1,276.0	93	22.6	Blue

Assay Class: High Sensitivity DNA Assay  
Data Path: C:\...ents and Settings\Bioanalyzer\2012-08-21\2012-08-21\_003.xad

Created: 8/21/2012 10:24:26 AM  
Modified: 8/21/2012 11:11:08 AM

**Gel Image**

