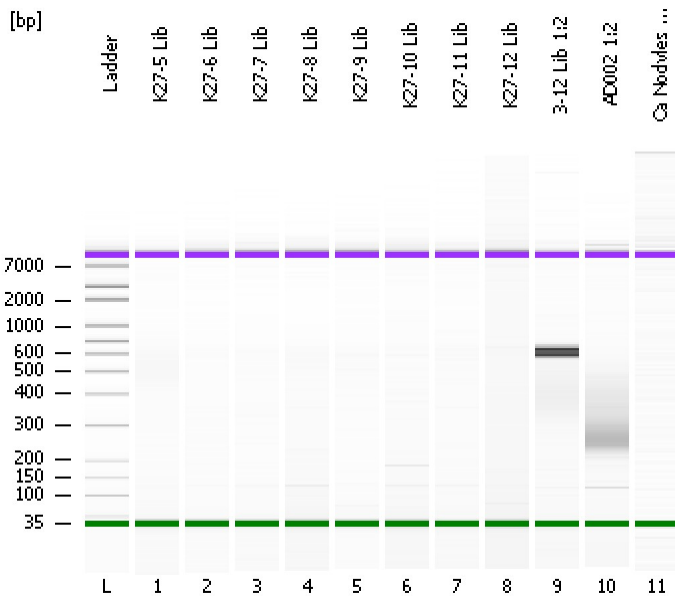


Assay Class: High Sensitivity DNA Assay  
Data Path: C:\...ents and Settings\Bioanalyzer\2012-08-21\2012-08-21\_006.xad

Created: 8/21/2012 1:58:33 PM  
Modified: 8/21/2012 2:55:57 PM

Electrophoresis File Run Summary



Instrument Information:

Instrument Name: DE13701086      Firmware: C.01.069  
Serial#: DE13701086      Type: G2938B

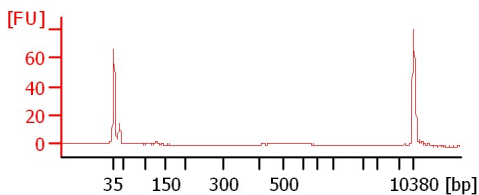
Assay Information:

Assay Origin Path: C:\Program Files\Agilent\2100 bioanalyzer\2100 expert\assays\dsDNA\High Sensitivity DNA.xsy  
Assay Class: High Sensitivity DNA Assay  
Version: 1.03  
Assay Comments: Copyright © 2003-2010 Agilent Technologies

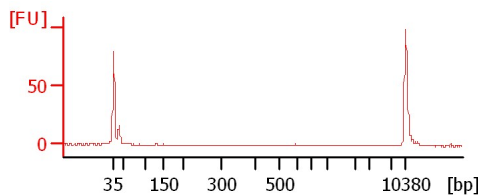
Chip Information:

Chip Lot #:   
Reagent Kit Lot #:   
Chip Comments:

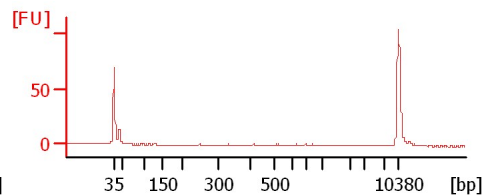
K27-5 Lib



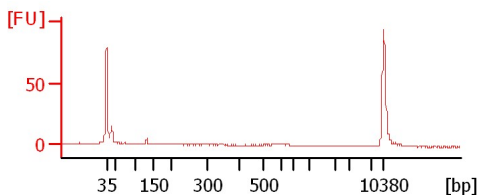
K27-6 Lib



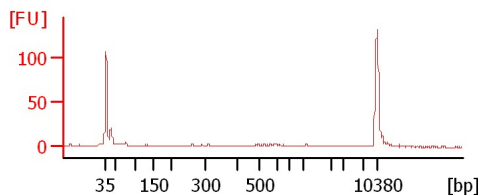
K27-7 Lib



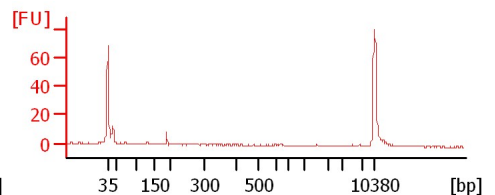
K27-8 Lib



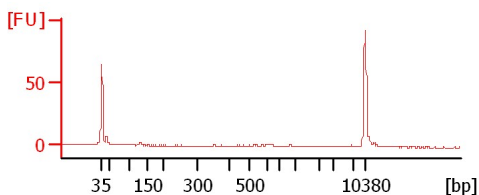
K27-9 Lib



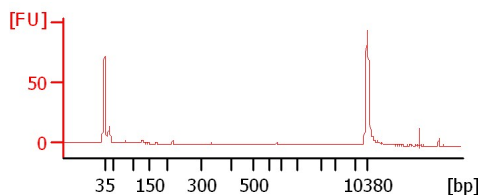
K27-10 Lib



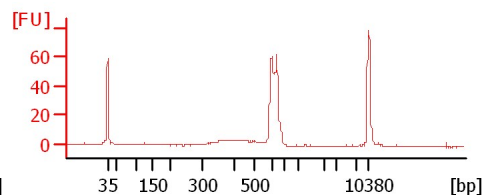
K27-11 Lib



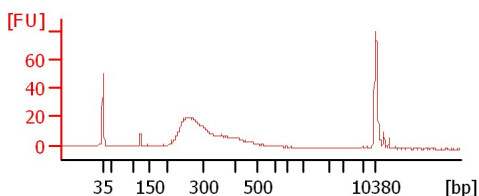
K27-12 Lib



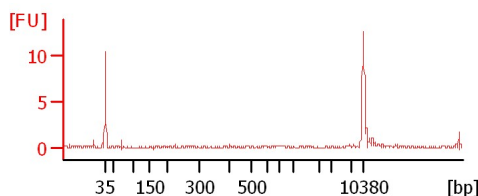
3-12 Lib 1:2



AD002 1:2



Ca Nodvles SGP Lib



Assay Class: High Sensitivity DNA Assay  
Data Path: C:\...ents and Settings\Bioanalyzer\2012-08-21\2012-08-21\_006.xad

Created: 8/21/2012 1:58:33 PM  
Modified: 8/21/2012 2:55:57 PM

**Electrophoresis File Run Summary (Chip Summary)**

Sample Name	Sample Comment	Rest. Digest	Status	Observation	Result Label	Result Color
K27-5 Lib		<input type="checkbox"/>	✓			
K27-6 Lib		<input type="checkbox"/>	✓			
K27-7 Lib		<input type="checkbox"/>	✓			
K27-8 Lib		<input type="checkbox"/>	✓			
K27-9 Lib		<input type="checkbox"/>	✓			
K27-10 Lib		<input type="checkbox"/>	✓			
K27-11 Lib		<input type="checkbox"/>	✓			
K27-12 Lib		<input type="checkbox"/>	✓			
3-12 Lib 1:2		<input type="checkbox"/>	✓			
AD002 1:2		<input type="checkbox"/>	✓			
Ca Nodvles SGP Lib		<input type="checkbox"/>	✓			
Ladder		<input type="checkbox"/>	✓			

**Chip Lot #**

**Reagent Kit Lot #**

**Chip Comments :**

Assay Class: High Sensitivity DNA Assay  
Data Path: C:\...ents and Settings\Bioanalyzer\2012-08-21\2012-08-21\_006.xad

Created: 8/21/2012 1:58:33 PM  
Modified: 8/21/2012 2:55:57 PM

**Electrophoresis Assay Details**

**General Analysis Settings**

Number of Available Sample and Ladder Wells (Max.) : 12  
Minimum Visible Range [s] : 32  
Maximum Visible Range [s] : 138  
Start Analysis Time Range [s] : 33  
End Analysis Time Range [s] : 137.5  
Ladder Concentration [pg/μl] : 1950  
Uses Standard Area for Ladder Fragments  
Lower Marker Concentration [pg/μl] : 125  
Upper Marker Concentration [pg/μl] : 75  
Used Upper Marker for Quantitation  
Standard Curve Fit is Point to Point  
Show Data Aligned to Lower and Upper Marker

**Integrator Settings**

Integration Start Time [s] : 33.05  
Integration End Time [s] : 137  
Slope Threshold : 0.8  
Height Threshold [FU] : 5  
Area Threshold : 0.1  
Width Threshold [s] : 0.6  
Baseline Plateau [s] : 0.5

**Filter Settings**

Filter Width [s] : 0.5  
Polynomial Order : 4

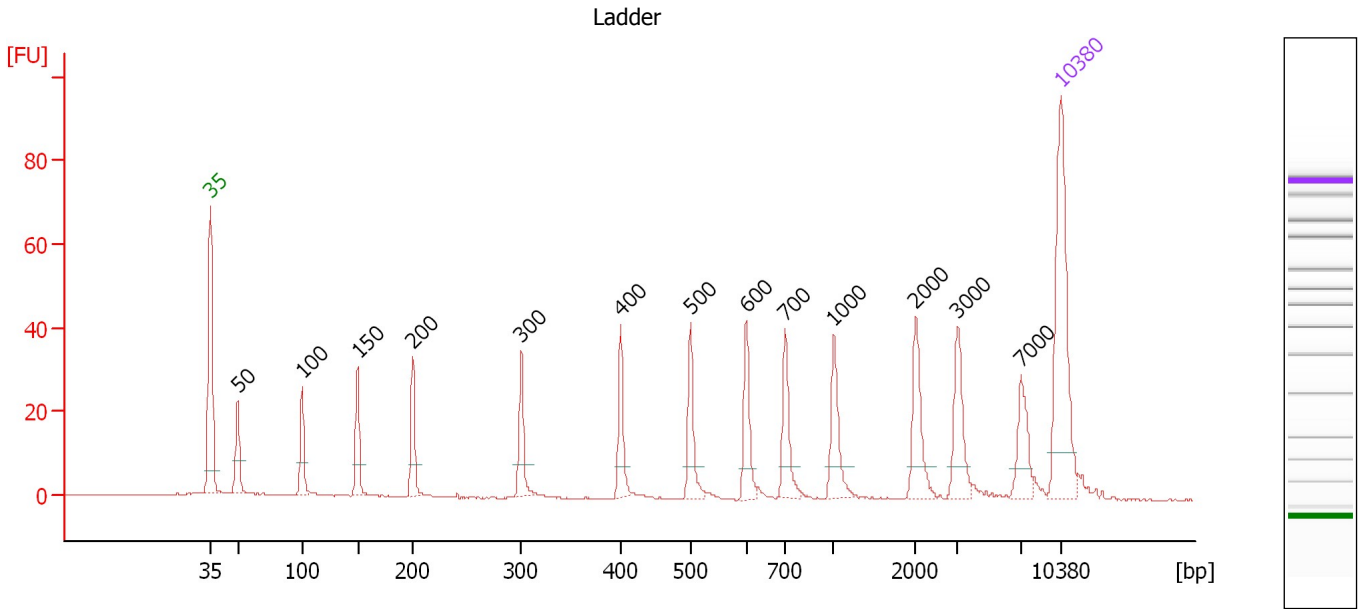
**Ladder**

Ladder Peak	Size	Area
1	35	160
2	50	210
3	100	208
4	150	221
5	200	242
6	300	270
7	400	305
8	500	306
9	600	336
10	700	321
11	1000	366
12	2000	413
13	3000	411
14	7000	400
15	10380	214

Assay Class: High Sensitivity DNA Assay  
 Data Path: C:\...ents and Settings\Bioanalyzer\2012-08-21\2012-08-21\_006.xad

Created: 8/21/2012 1:58:33 PM  
 Modified: 8/21/2012 2:55:57 PM

**Electropherogram Summary**



**Overall Results for Ladder**

Noise: 0.1

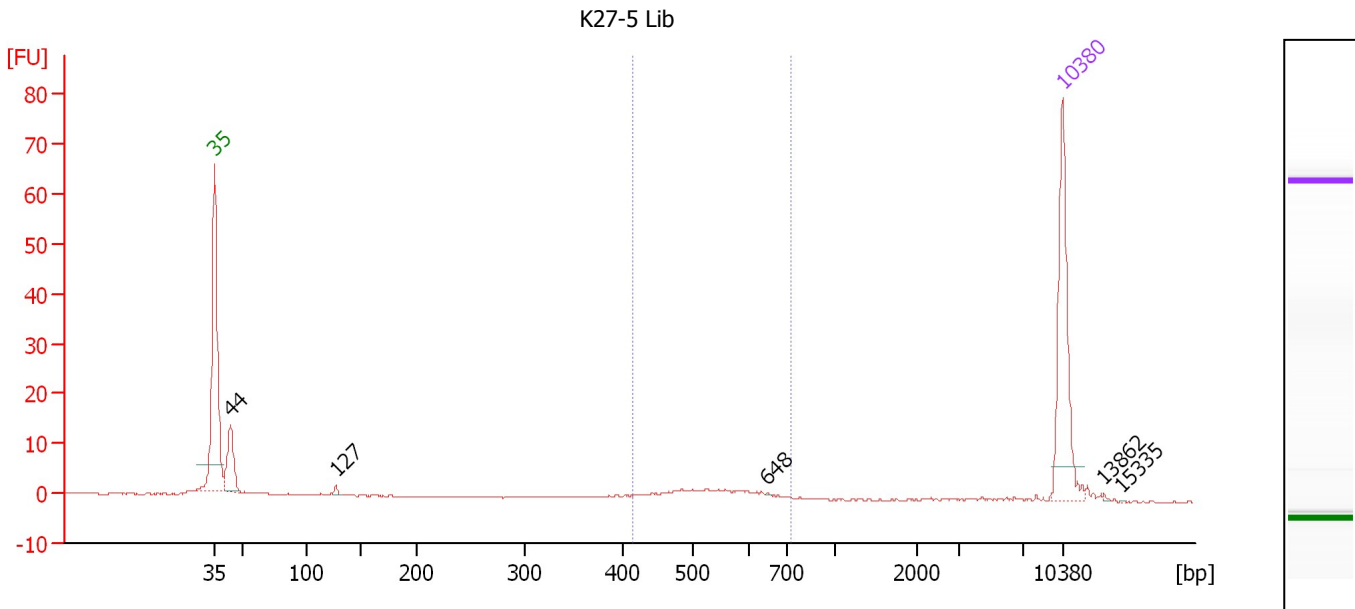
**Peak table for Ladder**

Peak	Size [bp]	Conc. [pg/μl]	Molarity [pmol/l]	Observations
1	35	125.00	5,411.3	Lower Marker
2	50	150.00	4,545.5	Ladder Peak
3	100	150.00	2,272.7	Ladder Peak
4	150	150.00	1,515.2	Ladder Peak
5	200	150.00	1,136.4	Ladder Peak
6	300	150.00	757.6	Ladder Peak
7	400	150.00	568.2	Ladder Peak
8	500	150.00	454.5	Ladder Peak
9	600	150.00	378.8	Ladder Peak
10	700	150.00	324.7	Ladder Peak
11	1,000	150.00	227.3	Ladder Peak
12	2,000	150.00	113.6	Ladder Peak
13	3,000	150.00	75.8	Ladder Peak
14	7,000	150.00	32.5	Ladder Peak
15	10,380	75.00	10.9	Upper Marker

Assay Class: High Sensitivity DNA Assay  
 Data Path: C:\...ents and Settings\Bioanalyzer\2012-08-21\2012-08-21\_006.xad

Created: 8/21/2012 1:58:33 PM  
 Modified: 8/21/2012 2:55:57 PM

**Electropherogram Summary Continued ...**



**Setpoint Deviations for sample 1 : K27-5 Lib**

Height Threshold [FU] : 0.1

**Overall Results for sample 1 : K27-5 Lib**

Number of peaks found: 5                      Corr. Area 1: 18.8  
 Noise: 0.1

**Peak table for sample 1 : K27-5 Lib**

Peak	Size [bp]	Conc. [pg/μl]	Molarity [pmol/l]	Observations
1	35	125.00	5,411.3	Lower Marker
2	44	51.08	1,776.7	
3	127	2.89	34.5	
4	648	0.27	0.6	
5	10,380	75.00	10.9	Upper Marker
6	13,862	0.00	0.0	
7	15,335	0.00	0.0	

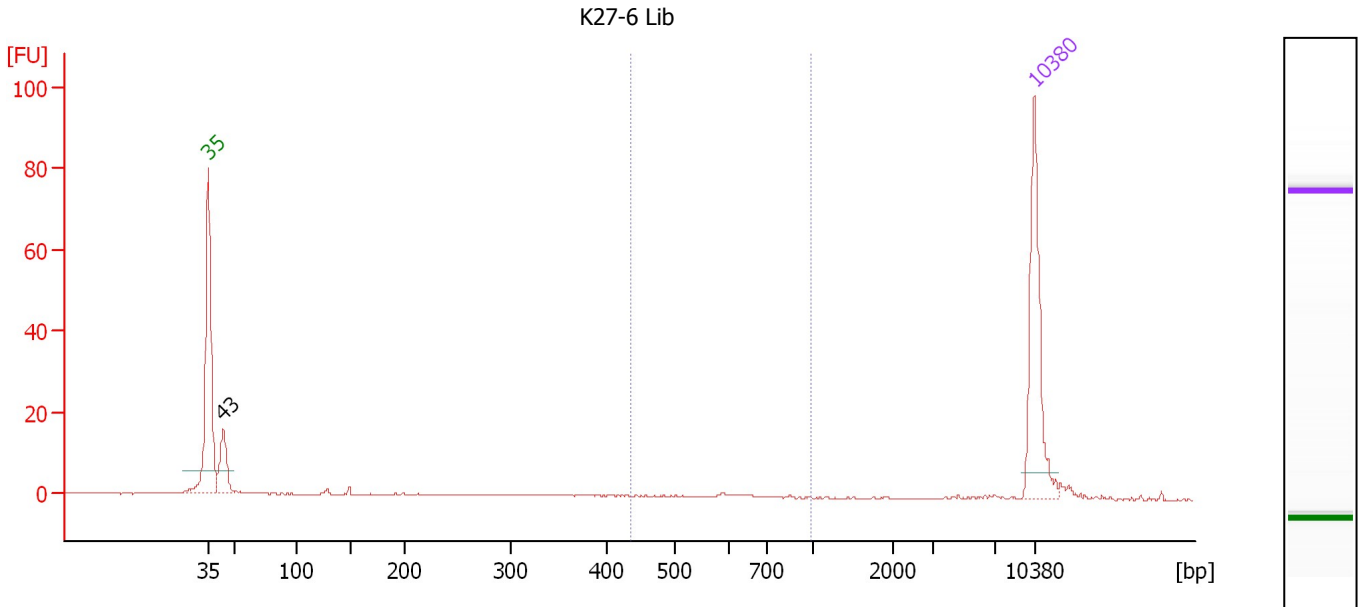
**Region table for sample 1 : K27-5 Lib**

From [bp]	To [bp]	Average Size [bp]	Molarity [pmol/l]	Conc. [pg/μl]	Corr. Area	% of Total	Size distribution in CV [%]	Color
412	725	538	88.0	30.61	18.8	34	12.8	Blue

Assay Class: High Sensitivity DNA Assay  
 Data Path: C:\...ents and Settings\Bioanalyzer\2012-08-21\2012-08-21\_006.xad

Created: 8/21/2012 1:58:33 PM  
 Modified: 8/21/2012 2:55:57 PM

**Electropherogram Summary Continued ...**



**Overall Results for sample 2 : K27-6 Lib**

Number of peaks found: 1                      Corr. Area 1: 2.0  
 Noise: 0.2

**Peak table for sample 2 : K27-6 Lib**

Peak	Size [bp]	Conc. [pg/μl]	Molarity [pmol/l]	Observations
1	35	125.00	5,411.3	Lower Marker
2	43	45.52	1,586.1	
3	10,380	75.00	10.9	Upper Marker

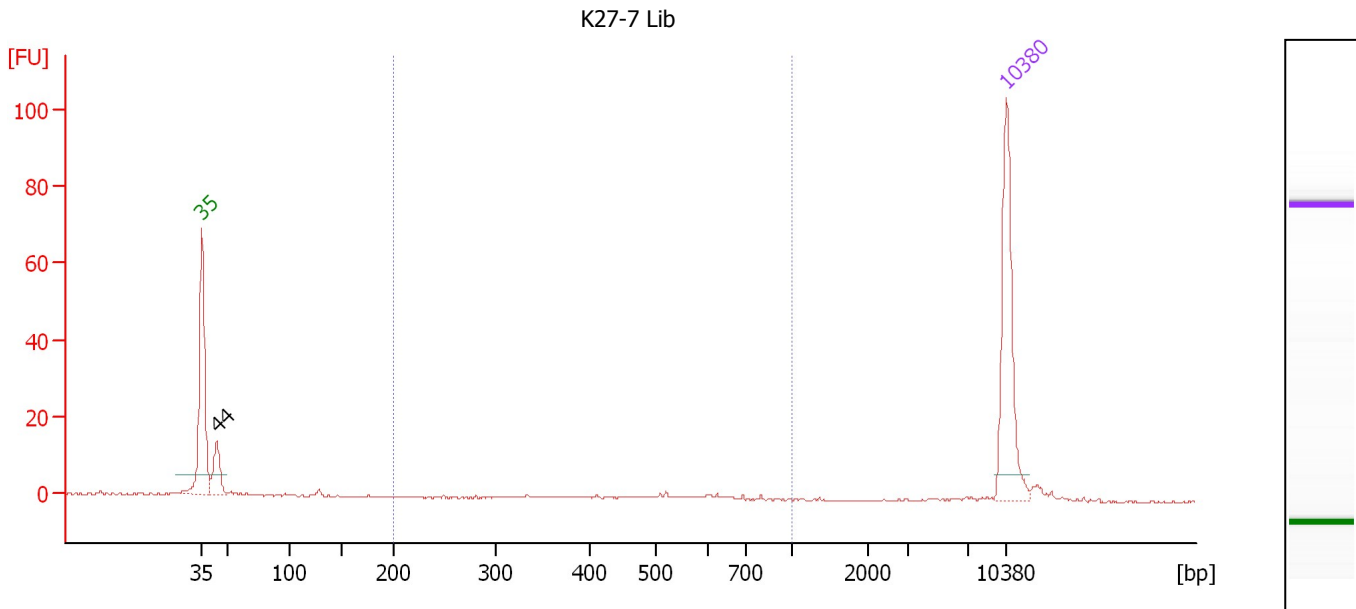
**Region table for sample 2 : K27-6 Lib**

From [bp]	To [bp]	Average Size [bp]	Molarity [pmol/l]	Conc. [pg/μl]	Corr. Area	% of Total	Size distribution in CV [%]	Color
436	991	610	6.0	2.36	2.0	5	11.6	Blue

Assay Class: High Sensitivity DNA Assay  
 Data Path: C:\...ents and Settings\Bioanalyzer\2012-08-21\2012-08-21\_006.xad

Created: 8/21/2012 1:58:33 PM  
 Modified: 8/21/2012 2:55:57 PM

**Electropherogram Summary Continued ...**



**Overall Results for sample 3 : K27-7 Lib**

Number of peaks found: 1                      Corr. Area 1: 3.2  
 Noise: 0.2

**Peak table for sample 3 : K27-7 Lib**

Peak	Size [bp]	Conc. [pg/μl]	Molarity [pmol/l]	Observations
1	35	125.00	5,411.3	Lower Marker
2	44	36.23	1,255.7	
3	10,380	75.00	10.9	Upper Marker

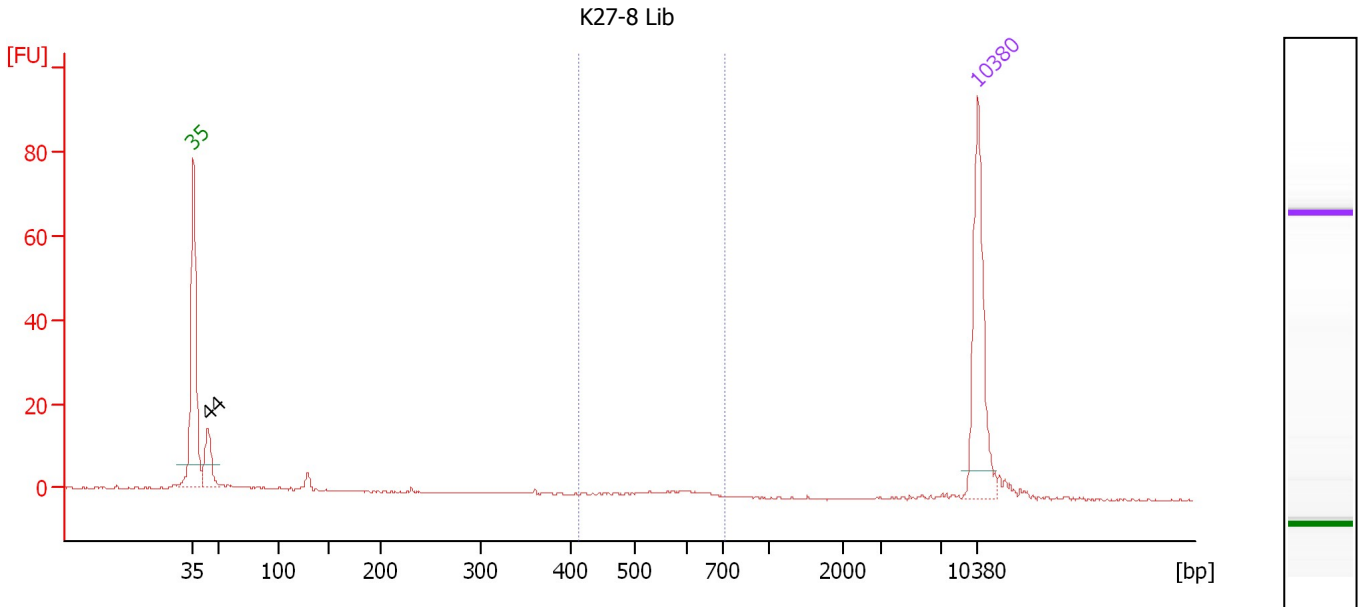
**Region table for sample 3 : K27-7 Lib**

From [bp]	To [bp]	Average Size [bp]	Molarity [pmol/l]	Conc. [pg/μl]	Corr. Area	% of Total	Size distribution in CV [%]	Color
200	1,000	559	9.8	3.42	3.2	9	18.0	Blue

Assay Class: High Sensitivity DNA Assay  
 Data Path: C:\...ents and Settings\Bioanalyzer\2012-08-21\2012-08-21\_006.xad

Created: 8/21/2012 1:58:33 PM  
 Modified: 8/21/2012 2:55:57 PM

**Electropherogram Summary Continued ...**



**Overall Results for sample 4 : K27-8 Lib**

Number of peaks found: 1                      Corr. Area 1: 5.9  
 Noise: 0.2

**Peak table for sample 4 : K27-8 Lib**

Peak	Size [bp]	Conc. [pg/μl]	Molarity [pmol/l]	Observations
1	35	125.00	5,411.3	Lower Marker
2	44	39.41	1,369.2	
3	10,380	75.00	10.9	Upper Marker

**Region table for sample 4 : K27-8 Lib**

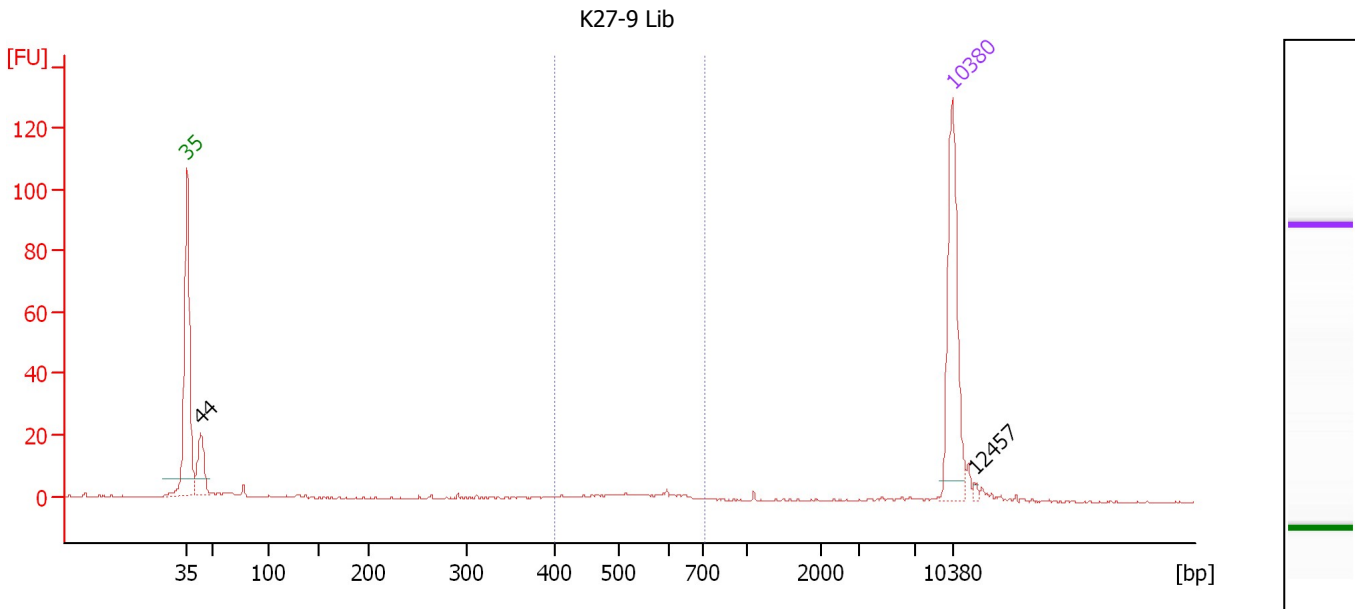
From [bp]	To [bp]	Average Size [bp]	Molarity [pmol/l]	Conc. [pg/μl]	Corr. Area	% of Total	Size distribution in CV [%]	Color
411	715	567	17.9	6.61	5.9	9	10.1	Blue



Assay Class: High Sensitivity DNA Assay  
 Data Path: C:\...ents and Settings\Bioanalyzer\2012-08-21\2012-08-21\_006.xad

Created: 8/21/2012 1:58:33 PM  
 Modified: 8/21/2012 2:55:57 PM

**Electropherogram Summary Continued ...**



**Overall Results for sample 5 : K27-9 Lib**

Number of peaks found: 2                      Corr. Area 1: 17.9  
 Noise: 0.2

**Peak table for sample 5 : K27-9 Lib**

Peak	Size [bp]	Conc. [pg/μl]	Molarity [pmol/l]	Observations
1	35	125.00	5,411.3	Lower Marker
2	44	41.36	1,440.3	
3	10,380	75.00	10.9	Upper Marker
4	12,457	0.00	0.0	

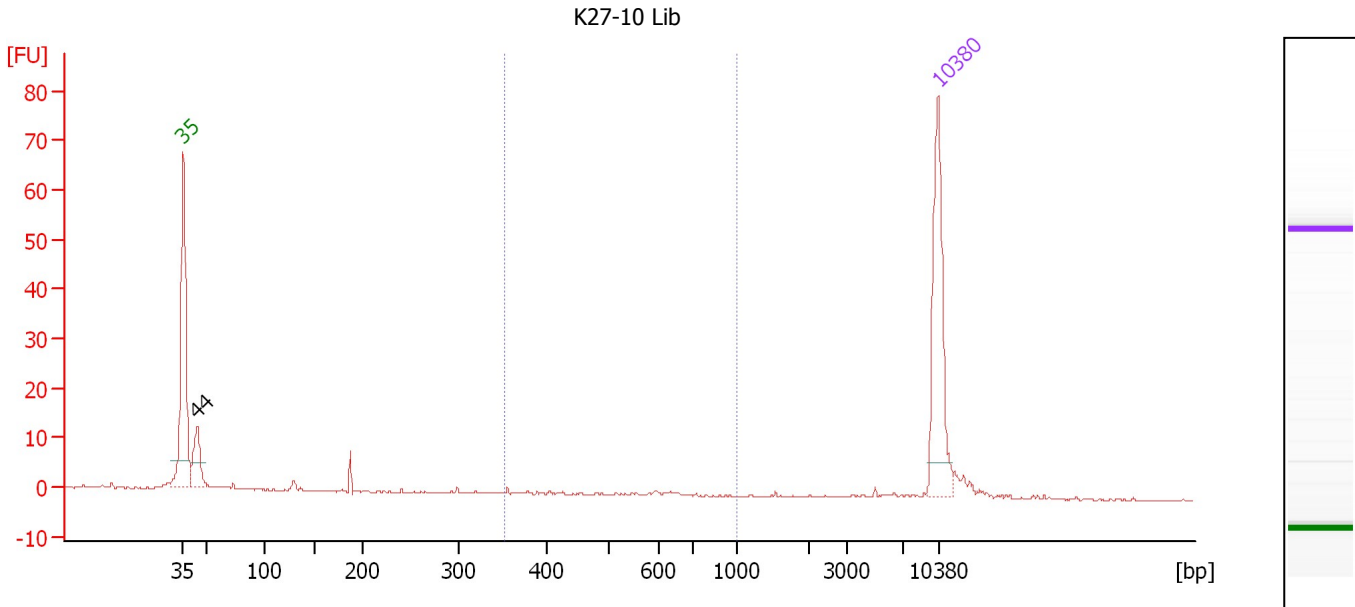
**Region table for sample 5 : K27-9 Lib**

From [bp]	To [bp]	Average Size [bp]	Molarity [pmol/l]	Conc. [pg/μl]	Corr. Area	% of Total	Size distribution in CV [%]	Color
398	710	534	43.5	14.99	17.9	20	13.6	Blue

Assay Class: High Sensitivity DNA Assay  
 Data Path: C:\...ents and Settings\Bioanalyzer\2012-08-21\2012-08-21\_006.xad

Created: 8/21/2012 1:58:33 PM  
 Modified: 8/21/2012 2:55:57 PM

**Electropherogram Summary Continued ...**



**Overall Results for sample 6 : K27-10 Lib**

Number of peaks found: 1                      Corr. Area 1: 2.5  
 Noise: 0.2

**Peak table for sample 6 : K27-10 Lib**

Peak	Size [bp]	Conc. [pg/μl]	Molarity [pmol/l]	Observations
1	35	125.00	5,411.3	Lower Marker
2	44	41.98	1,458.2	
3	10,380	75.00	10.9	Upper Marker

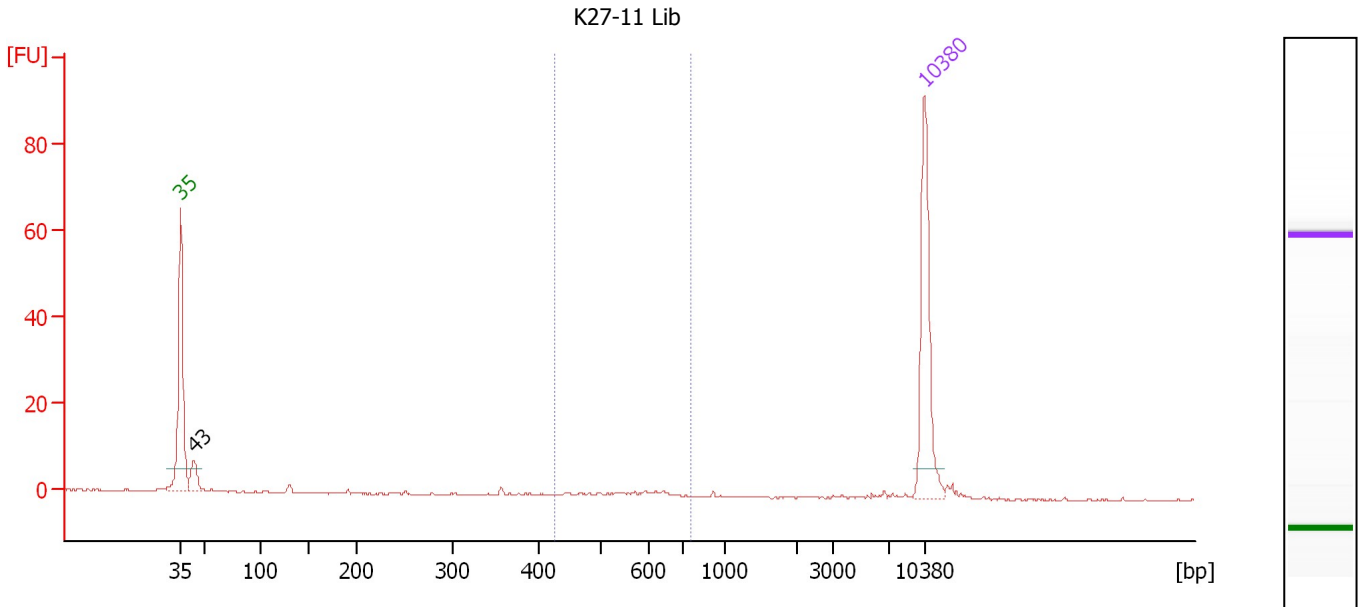
**Region table for sample 6 : K27-10 Lib**

From [bp]	To [bp]	Average Size [bp]	Molarity [pmol/l]	Conc. [pg/μl]	Corr. Area	% of Total	Size distribution in CV [%]	Color
351	1,000	540	10.4	3.45	2.5	5	20.6	Blue

Assay Class: High Sensitivity DNA Assay  
 Data Path: C:\...ents and Settings\Bioanalyzer\2012-08-21\2012-08-21\_006.xad

Created: 8/21/2012 1:58:33 PM  
 Modified: 8/21/2012 2:55:57 PM

**Electropherogram Summary Continued ...**



**Overall Results for sample 7 : K27-11 Lib**

Number of peaks found: 1                      Corr. Area 1: 6.7  
 Noise: 0.2

**Peak table for sample 7 : K27-11 Lib**

Peak	Size [bp]	Conc. [pg/μl]	Molarity [pmol/l]	Observations
1	35	125.00	5,411.3	Lower Marker
2	43	23.73	828.2	
3	10,380	75.00	10.9	Upper Marker

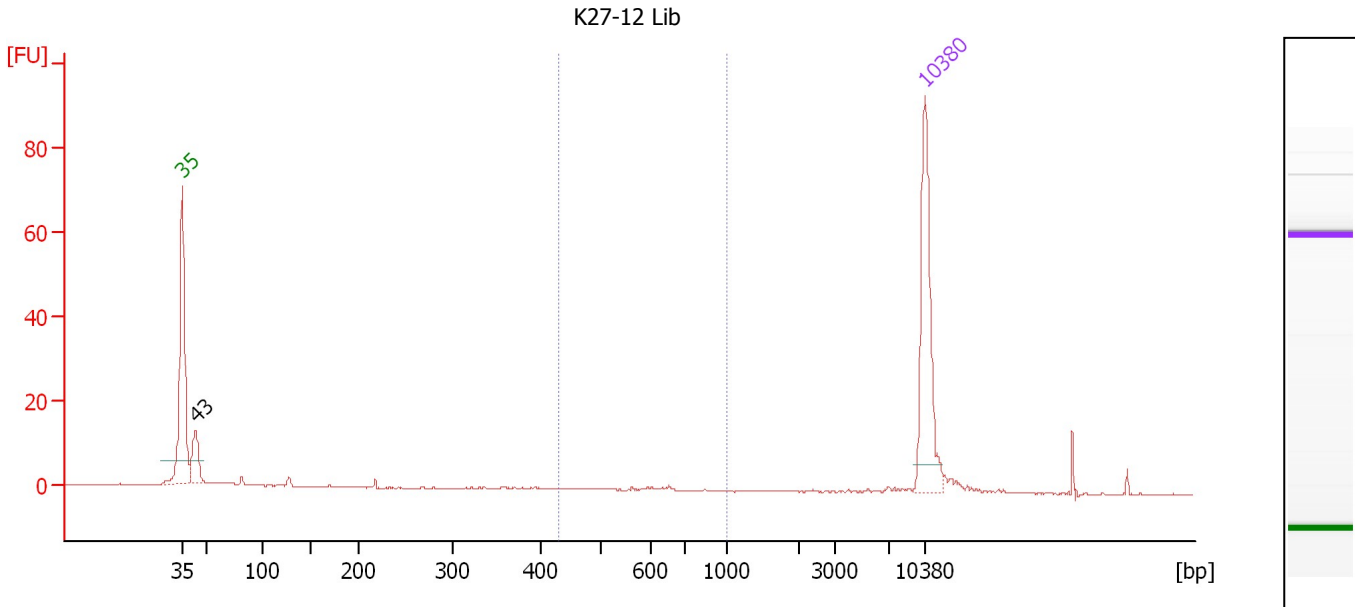
**Region table for sample 7 : K27-11 Lib**

From [bp]	To [bp]	Average Size [bp]	Molarity [pmol/l]	Conc. [pg/μl]	Corr. Area	% of Total	Size distribution in CV [%]	Color
425	758	566	23.8	8.72	6.7	20	12.1	Blue

Assay Class: High Sensitivity DNA Assay  
 Data Path: C:\...ents and Settings\Bioanalyzer\2012-08-21\2012-08-21\_006.xad

Created: 8/21/2012 1:58:33 PM  
 Modified: 8/21/2012 2:55:57 PM

**Electropherogram Summary Continued ...**



**Overall Results for sample 8 : K27-12 Lib**

Number of peaks found: 1                      Corr. Area 1: 1.7  
 Noise: 0.1

**Peak table for sample 8 : K27-12 Lib**

Peak	Size [bp]	Conc. [pg/μl]	Molarity [pmol/l]	Observations
1	35	125.00	5,411.3	Lower Marker
2	43	36.81	1,284.3	
3	10,380	75.00	10.9	Upper Marker

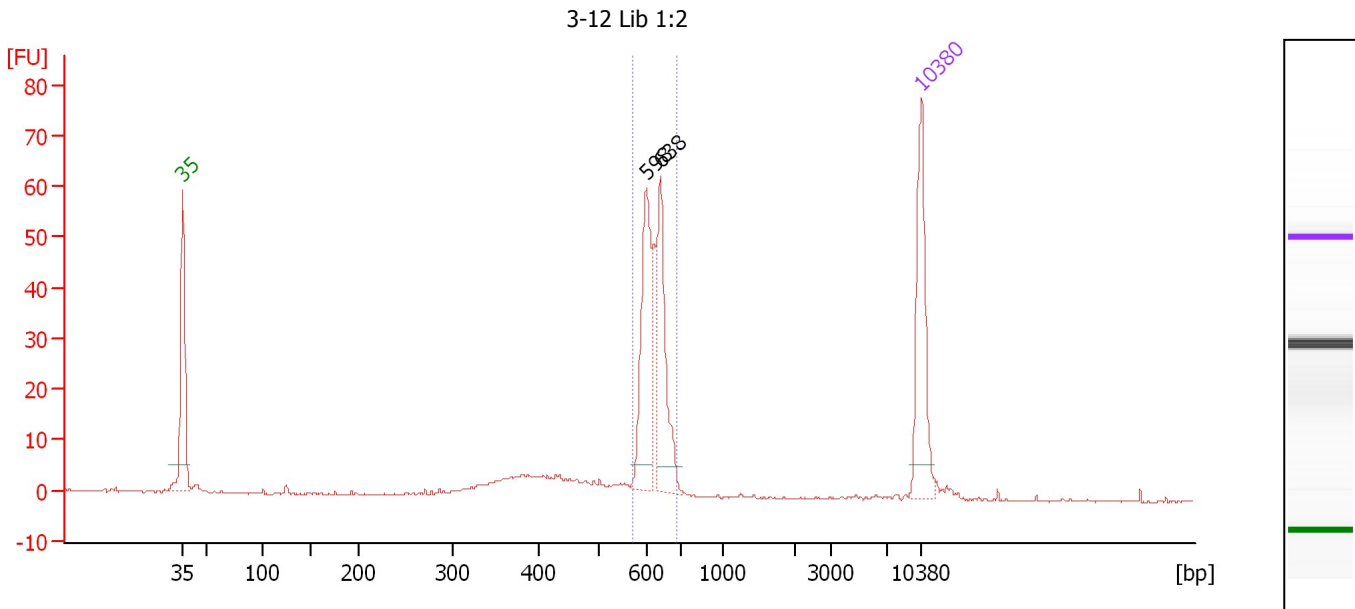
**Region table for sample 8 : K27-12 Lib**

From [bp]	To [bp]	Average Size [bp]	Molarity [pmol/l]	Conc. [pg/μl]	Corr. Area	% of Total	Size distribution in CV [%]	Color
430	1,000	618	4.8	1.90	1.7	3	11.0	Blue

Assay Class: High Sensitivity DNA Assay  
 Data Path: C:\...ents and Settings\Bioanalyzer\2012-08-21\2012-08-21\_006.xad

Created: 8/21/2012 1:58:33 PM  
 Modified: 8/21/2012 2:55:57 PM

**Electropherogram Summary Continued ...**



**Overall Results for sample 9 : 3-12 Lib 1:2**

Number of peaks found: 2                      Corr. Area 1: 165.3  
 Noise: 0.2

**Peak table for sample 9 : 3-12 Lib 1:2**

Peak	Size [bp]	Conc. [pg/μl]	Molarity [pmol/l]	Observations
1	35	125.00	5,411.3	Lower Marker
2	598	107.85	273.4	
3	638	96.82	230.1	
4	10,380	75.00	10.9	Upper Marker

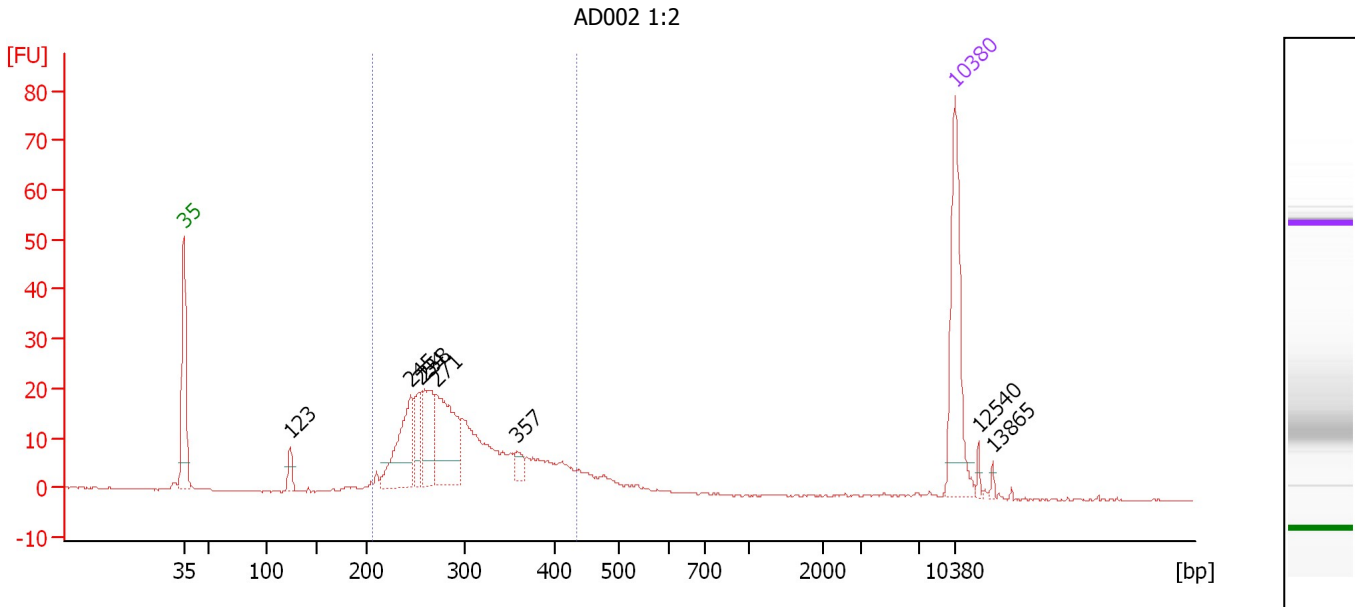
**Region table for sample 9 : 3-12 Lib 1:2**

From [bp]	To [bp]	Average Size [bp]	Molarity [pmol/l]	Conc. [pg/μl]	Corr. Area	% of Total	Size distribution in CV [%]	Color
569	689	619	586.5	239.23	165.3	68	4.1	Blue

Assay Class: High Sensitivity DNA Assay  
 Data Path: C:\...ents and Settings\Bioanalyzer\2012-08-21\2012-08-21\_006.xad

Created: 8/21/2012 1:58:33 PM  
 Modified: 8/21/2012 2:55:57 PM

**Electropherogram Summary Continued ...**



**Overall Results for sample 10 : AD002 1:2**

Number of peaks found: 8      Corr. Area 1: 296.3  
 Noise: 0.1

**Peak table for sample 10 : AD002 1:2**

Peak	Size [bp]	Conc. [pg/μl]	Molarity [pmol/l]	Observations
1	35	125.00	5,411.3	Lower Marker
2	123	15.53	190.6	
3	245	82.33	509.8	
4	254	32.63	194.3	
5	258	63.82	374.5	
6	271	96.48	540.1	
7	357	11.63	49.4	
8	10,380	75.00	10.9	Upper Marker
9	12,540	0.00	0.0	
10	13,865	0.00	0.0	

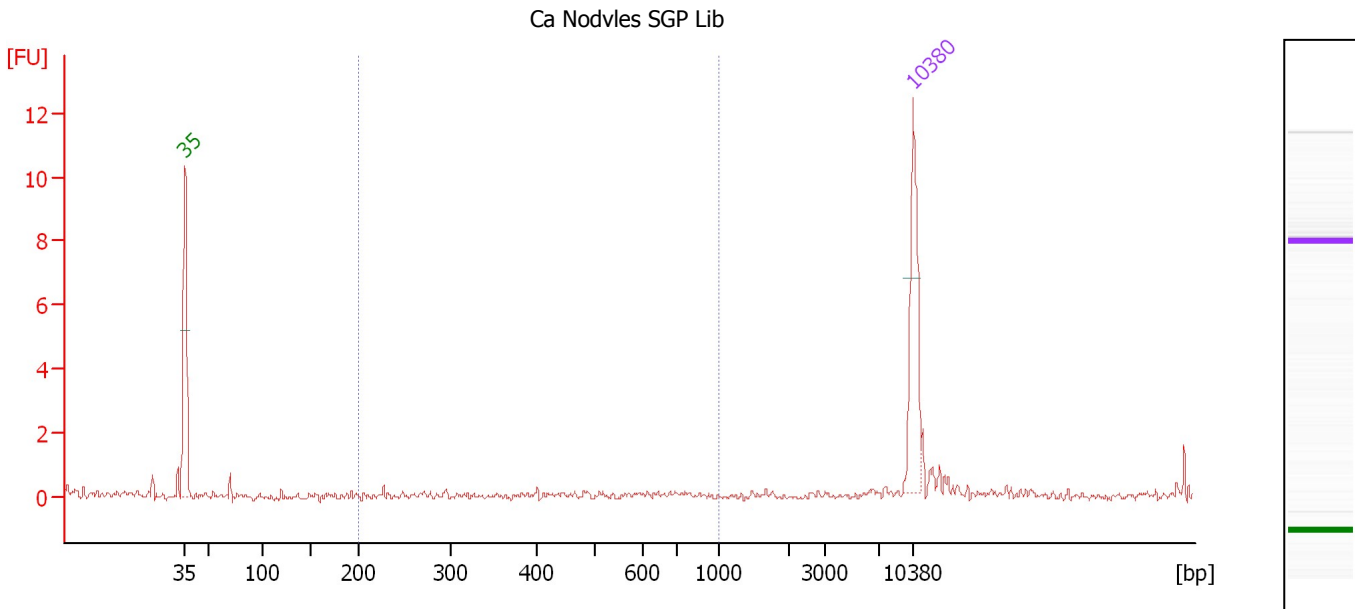
**Region table for sample 10 : AD002 1:2**

From [bp]	To [bp]	Average Size [bp]	Molarity [pmol/l]	Conc. [pg/μl]	Corr. Area	% of Total	Size distribution in CV [%]	Color
206	434	298	2,645.4	500.97	296.3	86	18.0	Blue

Assay Class: High Sensitivity DNA Assay  
 Data Path: C:\...ents and Settings\Bioanalyzer\2012-08-21\2012-08-21\_006.xad

Created: 8/21/2012 1:58:33 PM  
 Modified: 8/21/2012 2:55:57 PM

**Electropherogram Summary Continued ...**



**Overall Results for sample 11 : Ca Nodvles SGP Lib**

Number of peaks found: 0                      Corr. Area 1: 0.2  
 Noise: 0.1

**Peak table for sample 11 : Ca Nodvles SGP Lib**

Peak	Size [bp]	Conc. [pg/μl]	Molarity [pmol/l]	Observations
1	35	125.00	5,411.3	Lower Marker
2	10,380	75.00	10.9	Upper Marker

**Region table for sample 11 : Ca Nodvles SGP Lib**

From [bp]	To [bp]	Average Size [bp]	Molarity [pmol/l]	Conc. [pg/μl]	Corr. Area	% of Total	Size distribution in CV [%]	Color
200	1,000	429	12.2	2.70	0.2	6	39.7	Blue

Assay Class: High Sensitivity DNA Assay  
Data Path: C:\...ents and Settings\Bioanalyzer\2012-08-21\2012-08-21\_006.xad

Created: 8/21/2012 1:58:33 PM  
Modified: 8/21/2012 2:55:57 PM

**Gel Image**

