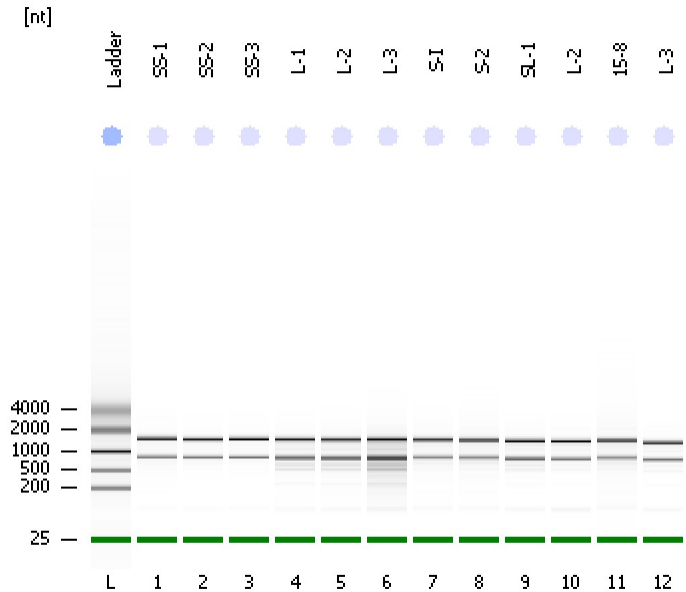


Assay Class: Plant RNA Nano
Data Path: C:\...ents and Settings\Bioanalyzer\2012-08-22\2012-08-22_001.xad

Created: 8/22/2012 9:40:13 AM
Modified: 8/22/2012 10:04:03 AM

Electrophoresis File Run Summary



Instrument Information:

Instrument Name: DE13701086 Firmware: C.01.069
Serial#: DE13701086 Type: G2938B

Assay Information:

Assay Origin Path: C:\Program Files\Agilent\2100 bioanalyzer\2100 expert\assays\RNA\Plant RNA Nano.xsy

Assay Class: Plant RNA Nano

Version: 1.3

Assay Comments: Total RNA Analysis ng sensitivity (Plant)

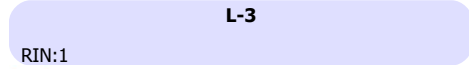
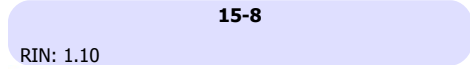
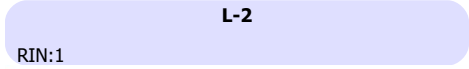
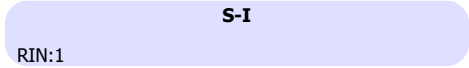
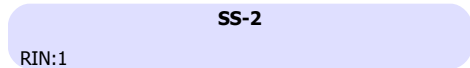
© Copyright 2003 - 2009 Agilent Technologies, Inc.

Chip Information:

Chip Lot #:

Reagent Kit Lot #:

Chip Comments: SL, SS: soil grown 717; S, L: medium grown 717.



Assay Class: Plant RNA Nano
 Data Path: C:\...ents and Settings\Bioanalyzer\2012-08-22\2012-08-22_001.xad

Created: 8/22/2012 9:40:13 AM
 Modified: 8/22/2012 10:04:03 AM

Electrophoresis File Run Summary (Chip Summary)

Sample Name	Sample Comment	Status	Result Label	Result Color
SS-1		✓	RIN:1	
SS-2		✓	RIN:1	
SS-3		✓	RIN:1	
L-1		✓	RIN:1	
L-2		✓	RIN:1	
L-3		✓	RIN:1	
S-I		✓	RIN:1	
S-2		✓	RIN:1	
SL-1		✓	RIN:1	
L-2		✓	RIN:1	
15-8		✓	RIN: 1.10	
L-3		✓	RIN:1	
Ladder		✓	All Other Samples	

Chip Lot #

Reagent Kit Lot #

Chip Comments :

SL, SS: soil grown 717; S, L: mediuem grown 717.

Assay Class: Plant RNA Nano
Data Path: C:\...ents and Settings\Bioanalyzer\2012-08-22\2012-08-22_001.xad

Created: 8/22/2012 9:40:13 AM
Modified: 8/22/2012 10:04:03 AM

Electrophoresis Assay Details

General Analysis Settings

Number of Available Sample and Ladder Wells (Max.) : 13
Minimum Visible Range [s] : 17
Maximum Visible Range [s] : 70
Start Analysis Time Range [s] : 19
End Analysis Time Range [s] : 69
Ladder Concentration [ng/μl] : 150
Lower Marker Concentration [ng/μl] : 0
Upper Marker Concentration [ng/μl] : 0
Used Lower Marker for Quantitation
Standard Curve Fit is Logarithmic
Show Data Aligned to Lower Marker

Integrator Settings

Integration Start Time [s] : 19
Integration End Time [s] : 69
Slope Threshold : 0.6
Height Threshold [FU] : 0.2
Area Threshold : 0.1
Width Threshold [s] : 0.2
Baseline Plateau [s] : 6

Filter Settings

Filter Width [s] : 0.5
Polynomial Order : 4

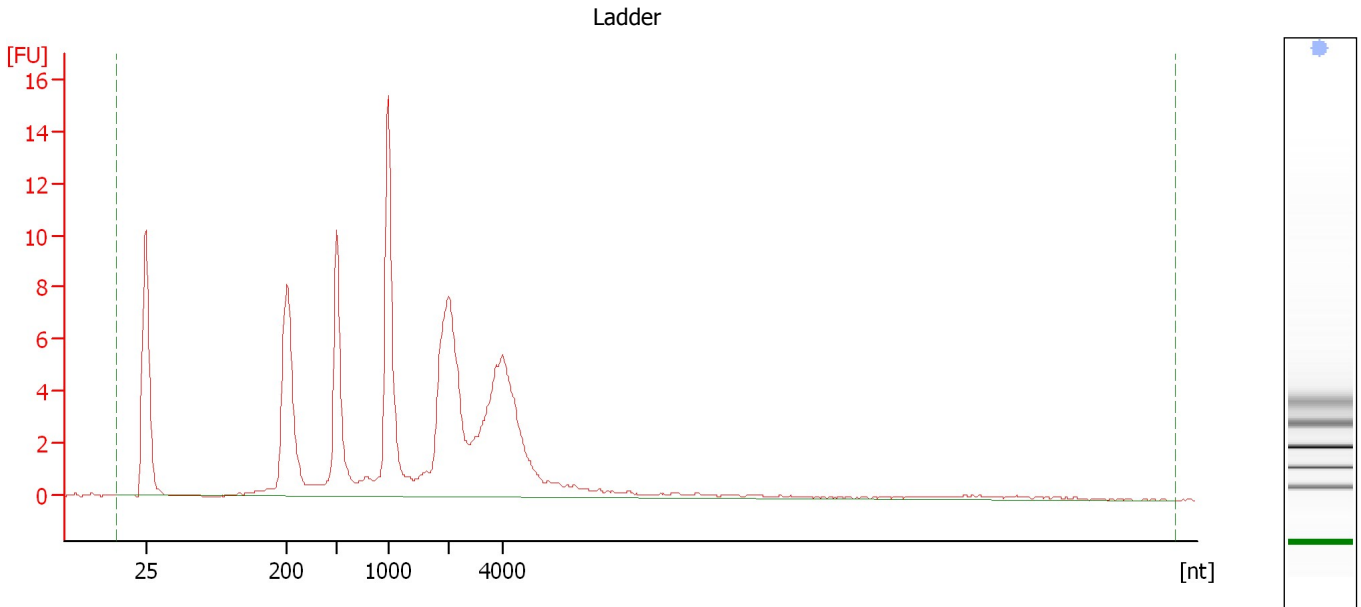
Ladder

Ladder Peak	Size
1	25
2	200
3	500
4	1000
5	2000
6	4000

Assay Class: Plant RNA Nano
Data Path: C:\...ents and Settings\Bioanalyzer\2012-08-22\2012-08-22_001.xad

Created: 8/22/2012 9:40:13 AM
Modified: 8/22/2012 10:04:03 AM

Electropherogram Summary



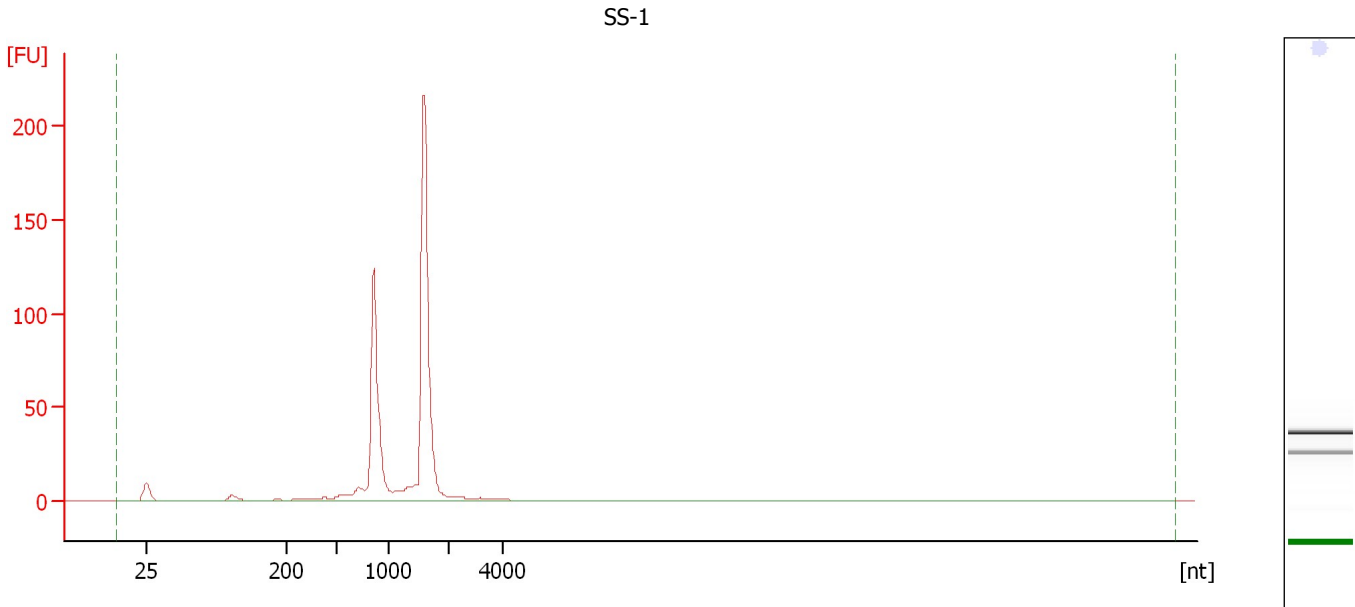
Overall Results for Ladder

RNA Area:	114.5	Result Flagging Color:	
RNA Concentration:	150 ng/ μ l	Result Flagging Label:	All Other Samples

Assay Class: Plant RNA Nano
Data Path: C:\...ents and Settings\Bioanalyzer\2012-08-22\2012-08-22_001.xad

Created: 8/22/2012 9:40:13 AM
Modified: 8/22/2012 10:04:03 AM

Electropherogram Summary Continued ...



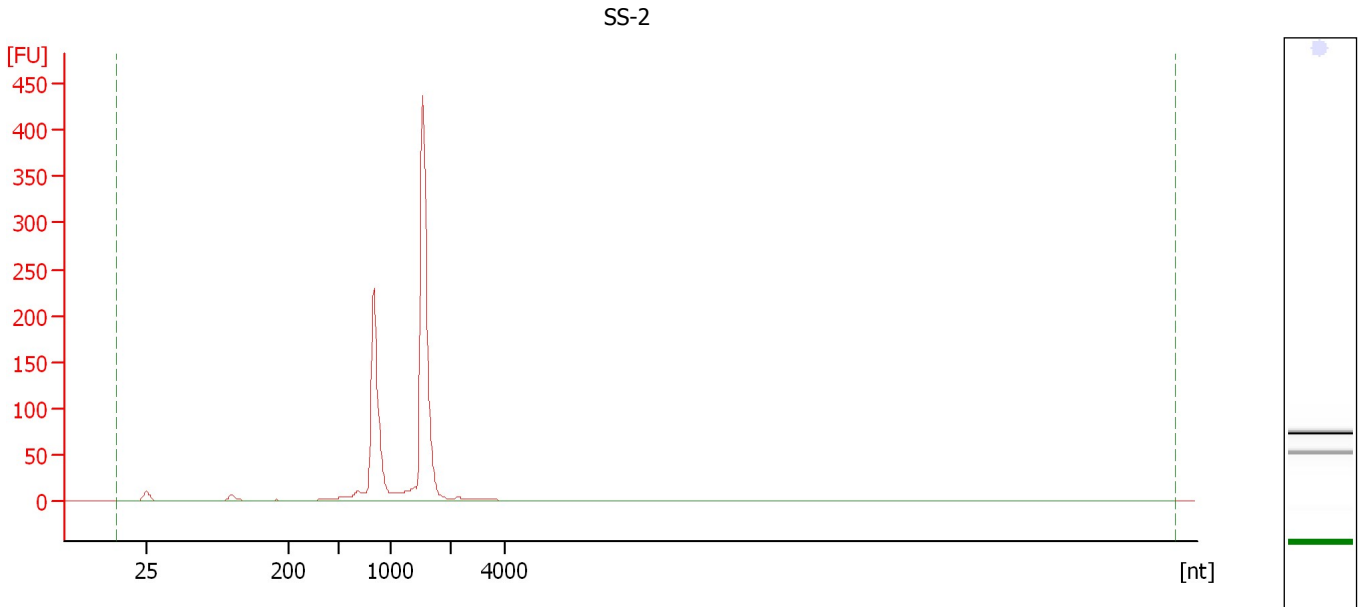
Overall Results for sample 1 : SS-1

RNA Area:	481.5	RNA Integrity Number (RIN):	1 (B.02.08)
RNA Concentration:	631 ng/μl	Result Flagging Color:	
rRNA Ratio [25s / 18s]:	0.0	Result Flagging Label:	RIN:1

Assay Class: Plant RNA Nano
Data Path: C:\...ents and Settings\Bioanalyzer\2012-08-22\2012-08-22_001.xad

Created: 8/22/2012 9:40:13 AM
Modified: 8/22/2012 10:04:03 AM

Electropherogram Summary Continued ...



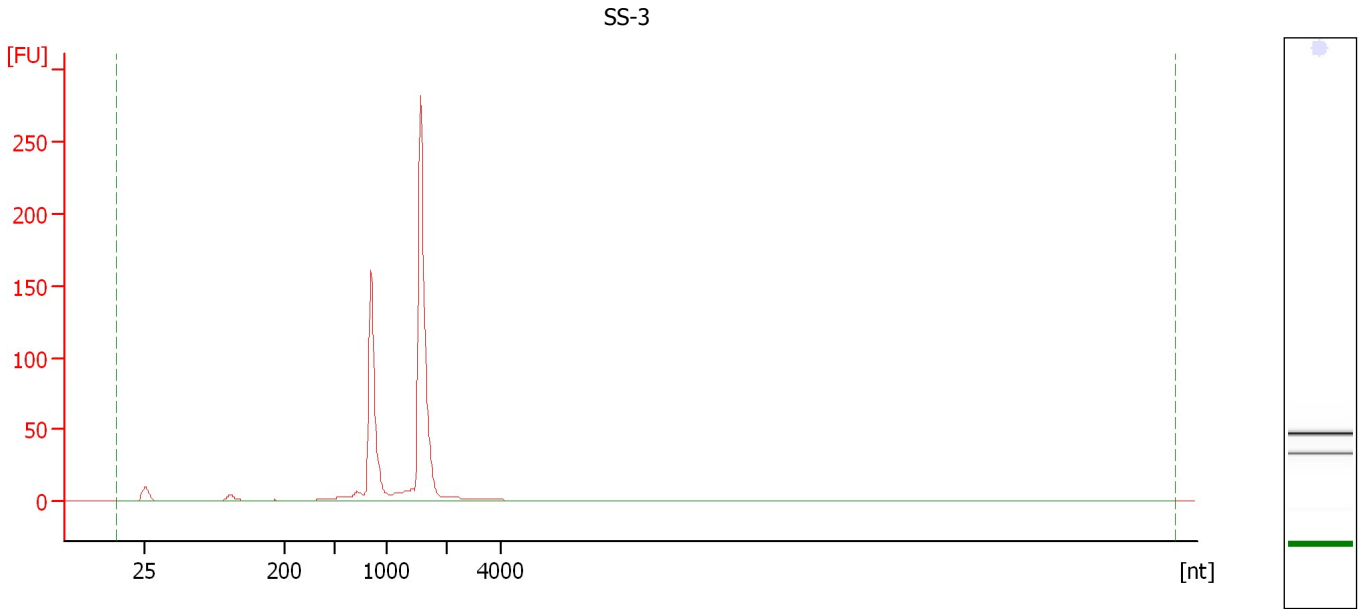
Overall Results for sample 2 : SS-2

RNA Area:	879.8	RNA Integrity Number (RIN):	1 (B.02.08)
RNA Concentration:	1,152 ng/ μ l	Result Flagging Color:	
rRNA Ratio [25s / 18s]:	0.0	Result Flagging Label:	RIN:1

Assay Class: Plant RNA Nano
Data Path: C:\...ents and Settings\Bioanalyzer\2012-08-22\2012-08-22_001.xad

Created: 8/22/2012 9:40:13 AM
Modified: 8/22/2012 10:04:03 AM

Electropherogram Summary Continued ...



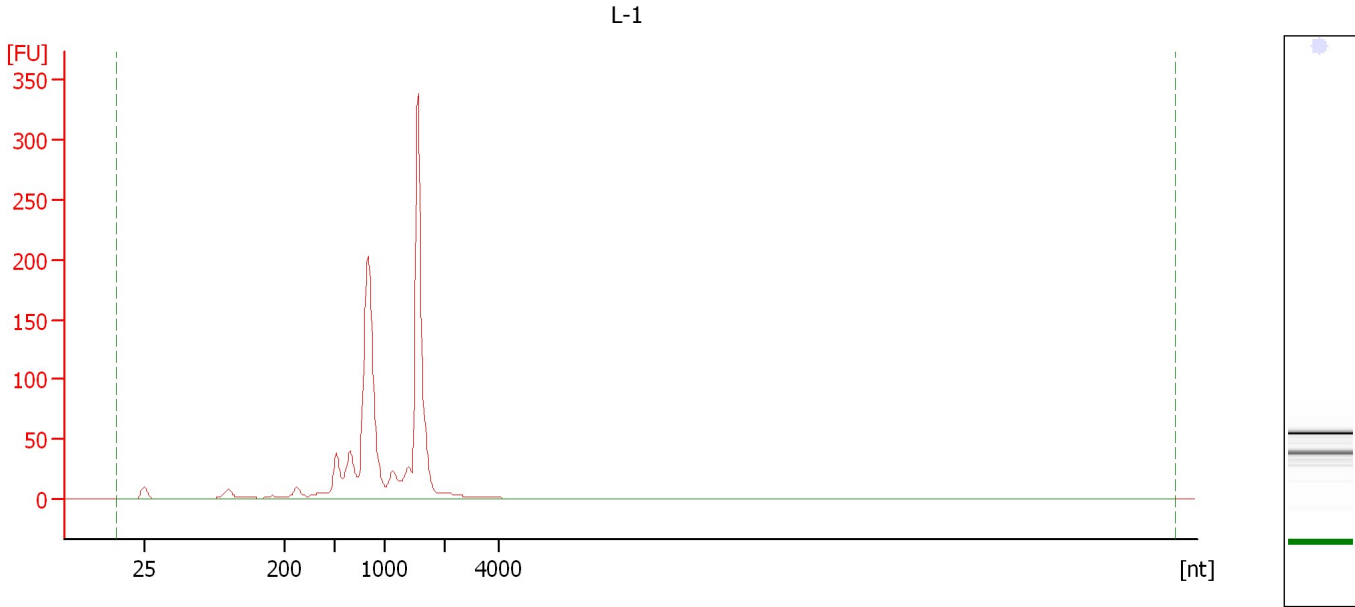
Overall Results for sample 3 : SS-3

RNA Area:	566.5	RNA Integrity Number (RIN):	1 (B.02.08)
RNA Concentration:	742 ng/μl	Result Flagging Color:	
rRNA Ratio [25s / 18s]:	0.0	Result Flagging Label:	RIN:1

Assay Class: Plant RNA Nano
Data Path: C:\...ents and Settings\Bioanalyzer\2012-08-22\2012-08-22_001.xad

Created: 8/22/2012 9:40:13 AM
Modified: 8/22/2012 10:04:03 AM

Electropherogram Summary Continued ...



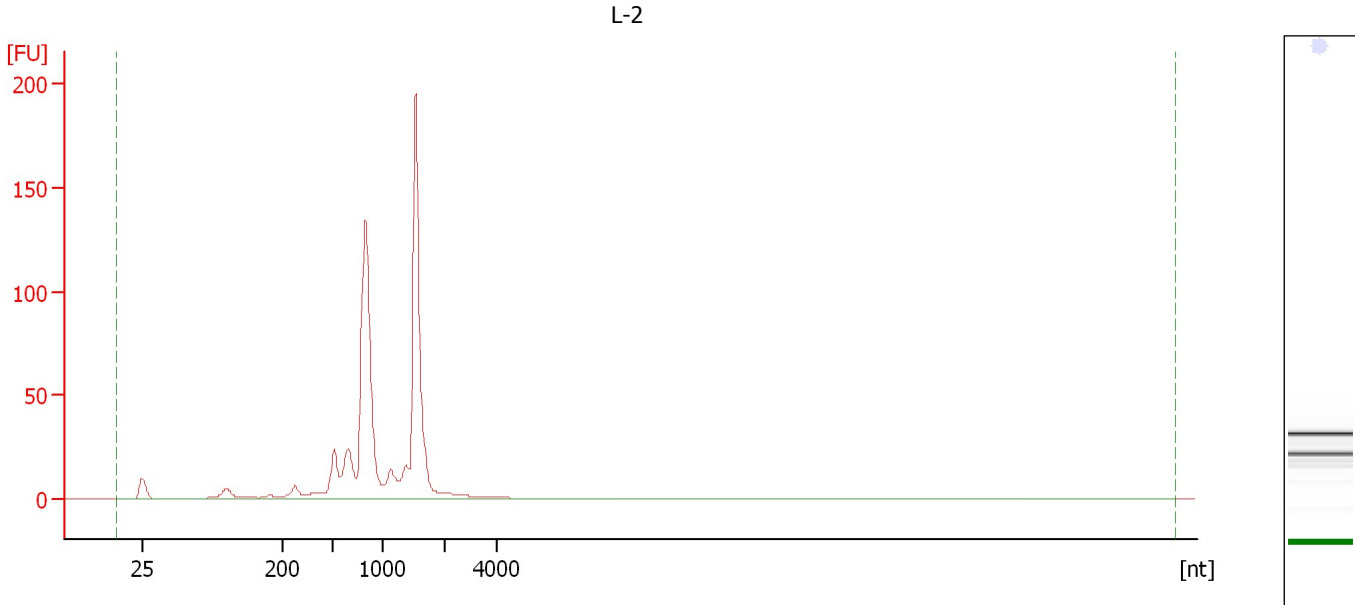
Overall Results for sample 4 : L-1

RNA Area:	1,002.4	RNA Integrity Number (RIN):	1 (B.02.08)
RNA Concentration:	1,313 ng/ μ l	Result Flagging Color:	
rRNA Ratio [25s / 18s]:	0.0	Result Flagging Label:	RIN:1

Assay Class: Plant RNA Nano
Data Path: C:\...ents and Settings\Bioanalyzer\2012-08-22\2012-08-22_001.xad

Created: 8/22/2012 9:40:13 AM
Modified: 8/22/2012 10:04:03 AM

Electropherogram Summary Continued ...



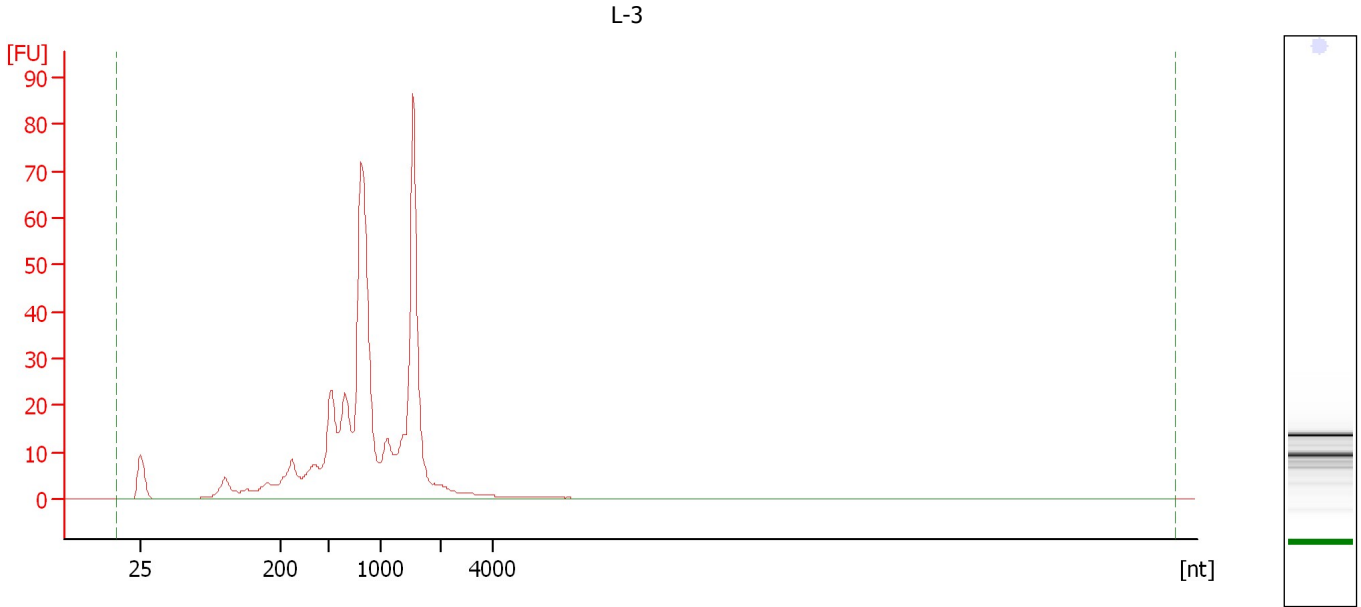
Overall Results for sample 5 : L-2

RNA Area:	612.5	RNA Integrity Number (RIN):	1 (B.02.08)
RNA Concentration:	802 ng/μl	Result Flagging Color:	
rRNA Ratio [25s / 18s]:	0.0	Result Flagging Label:	RIN:1

Assay Class: Plant RNA Nano
Data Path: C:\...ents and Settings\Bioanalyzer\2012-08-22\2012-08-22_001.xad

Created: 8/22/2012 9:40:13 AM
Modified: 8/22/2012 10:04:03 AM

Electropherogram Summary Continued ...



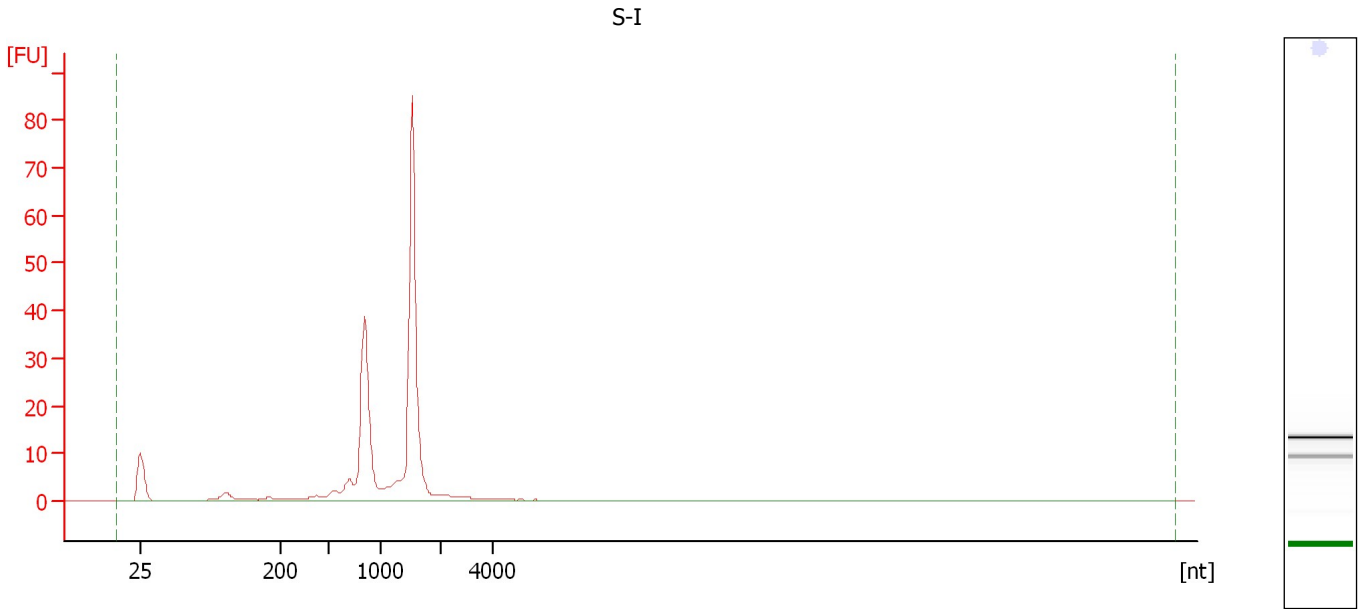
Overall Results for sample 6 : L-3

RNA Area:	460.5	RNA Integrity Number (RIN):	1 (B.02.08)
RNA Concentration:	603 ng/μl	Result Flagging Color:	
rRNA Ratio [25s / 18s]:	0.0	Result Flagging Label:	RIN:1

Assay Class: Plant RNA Nano
Data Path: C:\...ents and Settings\Bioanalyzer\2012-08-22\2012-08-22_001.xad

Created: 8/22/2012 9:40:13 AM
Modified: 8/22/2012 10:04:03 AM

Electropherogram Summary Continued ...



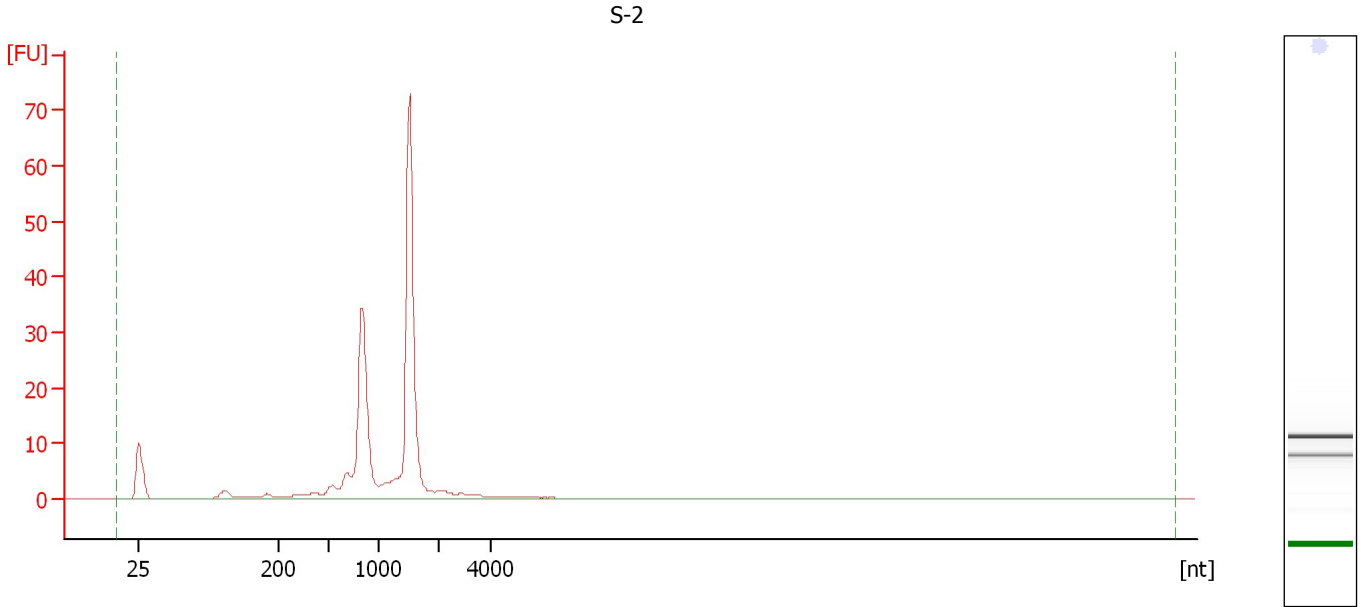
Overall Results for sample 7 : S-I

RNA Area:	197.1	RNA Integrity Number (RIN):	1 (B.02.08)
RNA Concentration:	258 ng/μl	Result Flagging Color:	
rRNA Ratio [25s / 18s]:	0.0	Result Flagging Label:	RIN:1

Assay Class: Plant RNA Nano
Data Path: C:\...ents and Settings\Bioanalyzer\2012-08-22\2012-08-22_001.xad

Created: 8/22/2012 9:40:13 AM
Modified: 8/22/2012 10:04:03 AM

Electropherogram Summary Continued ...



Overall Results for sample 8 : S-2

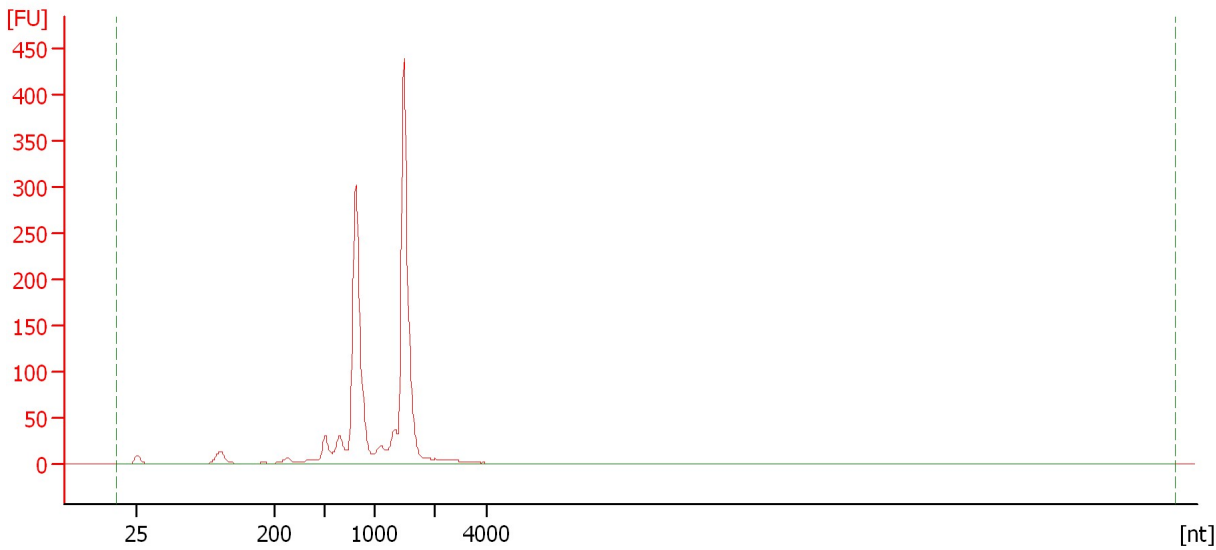
RNA Area:	183.2	RNA Integrity Number (RIN):	1 (B.02.08)
RNA Concentration:	240 ng/μl	Result Flagging Color:	
rRNA Ratio [25s / 18s]:	0.0	Result Flagging Label:	RIN:1

Assay Class: Plant RNA Nano
Data Path: C:\...ents and Settings\Bioanalyzer\2012-08-22\2012-08-22_001.xad

Created: 8/22/2012 9:40:13 AM
Modified: 8/22/2012 10:04:03 AM

Electropherogram Summary Continued ...

SL-1



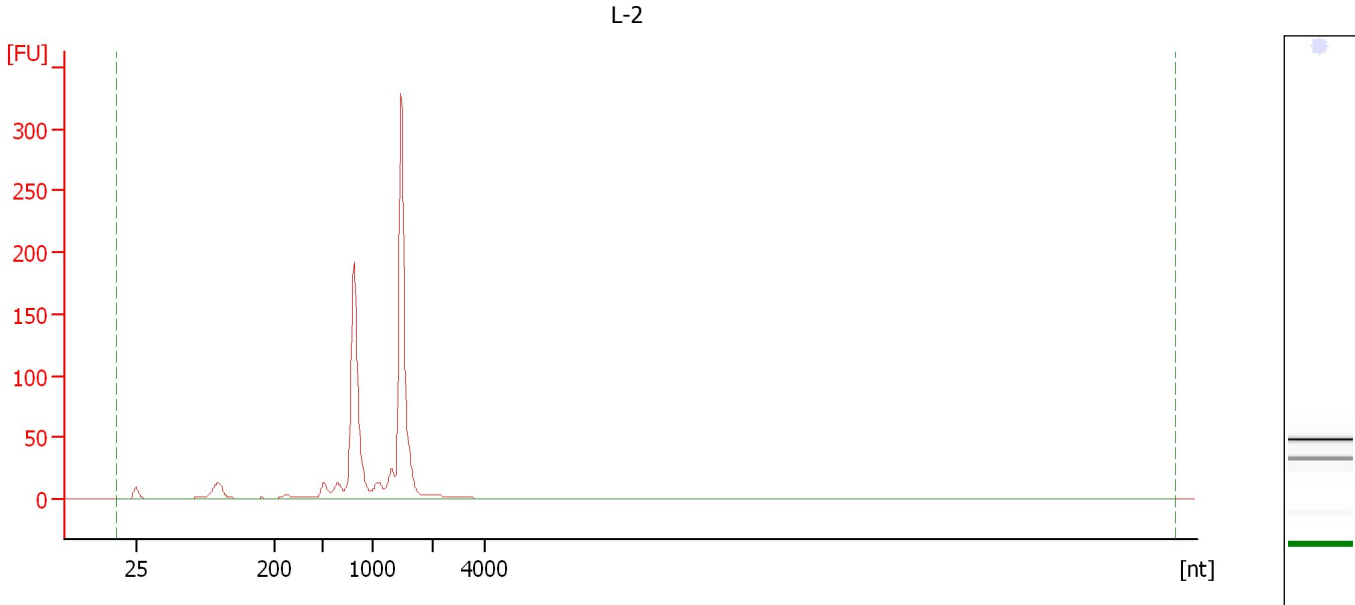
Overall Results for sample 9 : SL-1

RNA Area:	1,189.5	RNA Integrity Number (RIN):	1 (B.02.08)
RNA Concentration:	1,558 ng/μl	Result Flagging Color:	
rRNA Ratio [25s / 18s]:	0.0	Result Flagging Label:	RIN:1

Assay Class: Plant RNA Nano
Data Path: C:\...ents and Settings\Bioanalyzer\2012-08-22\2012-08-22_001.xad

Created: 8/22/2012 9:40:13 AM
Modified: 8/22/2012 10:04:03 AM

Electropherogram Summary Continued ...



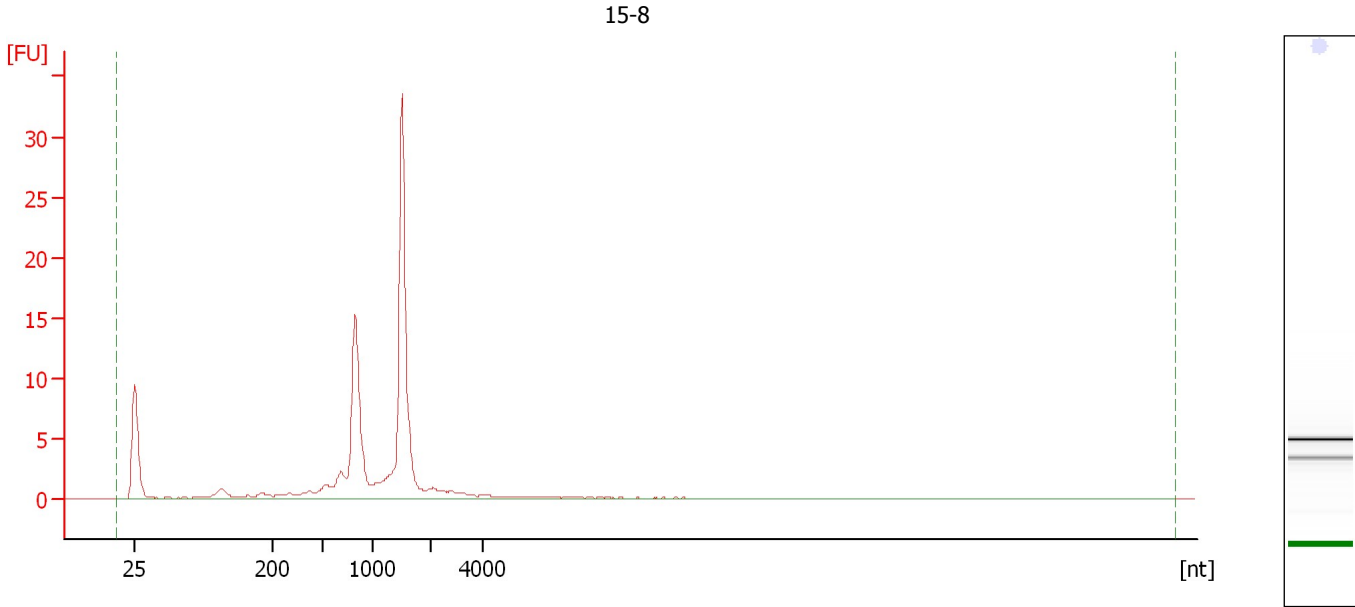
Overall Results for sample 10 : L-2

RNA Area:	761.3	RNA Integrity Number (RIN):	1 (B.02.08)
RNA Concentration:	997 ng/μl	Result Flagging Color:	
rRNA Ratio [25s / 18s]:	0.0	Result Flagging Label:	RIN:1

Assay Class: Plant RNA Nano
Data Path: C:\...ents and Settings\Bioanalyzer\2012-08-22\2012-08-22_001.xad

Created: 8/22/2012 9:40:13 AM
Modified: 8/22/2012 10:04:03 AM

Electropherogram Summary Continued ...



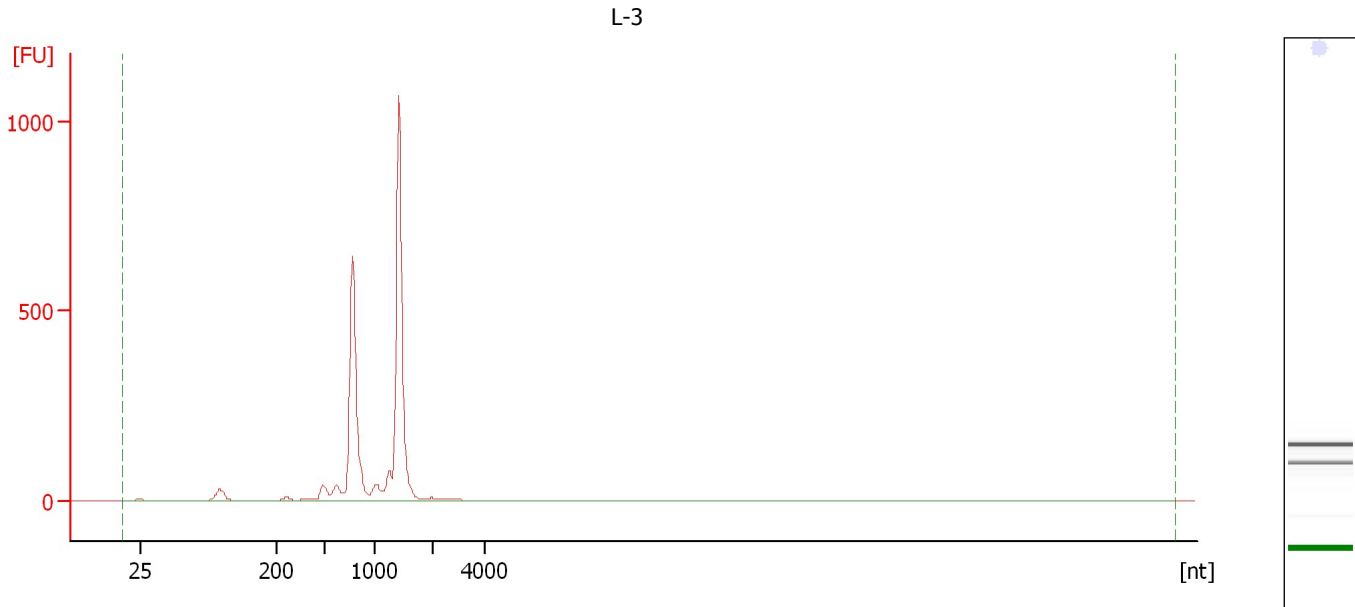
Overall Results for sample 11 : 15-8

RNA Area:	86.5	RNA Integrity Number (RIN):	1.1 (B.02.08)
RNA Concentration:	113 ng/ μ l	Result Flagging Color:	
rRNA Ratio [25s / 18s]:	0.0	Result Flagging Label:	RIN: 1.10

Assay Class: Plant RNA Nano
Data Path: C:\...ents and Settings\Bioanalyzer\2012-08-22\2012-08-22_001.xad

Created: 8/22/2012 9:40:13 AM
Modified: 8/22/2012 10:04:03 AM

Electropherogram Summary Continued ...



Overall Results for sample 12 : L-3

RNA Area:	2,340.9	RNA Integrity Number (RIN):	1 (B.02.08)
RNA Concentration:	3,066 ng/μl	Result Flagging Color:	
rRNA Ratio [25s / 18s]:	0.0	Result Flagging Label:	RIN:1

Assay Class: Plant RNA Nano
Data Path: C:\...ents and Settings\Bioanalyzer\2012-08-22\2012-08-22_001.xad

Created: 8/22/2012 9:40:13 AM
Modified: 8/22/2012 10:04:03 AM

Gel Image

