

Assay Class: High Sensitivity DNA Assay
Data Path: C:\...ents and Settings\Bioanalyzer\2012-08-22\2012-08-22_002.xad

Created: 8/22/2012 10:15:59 AM
Modified: 8/22/2012 10:57:20 AM

Electrophoresis File Run Summary

Instrument Information:

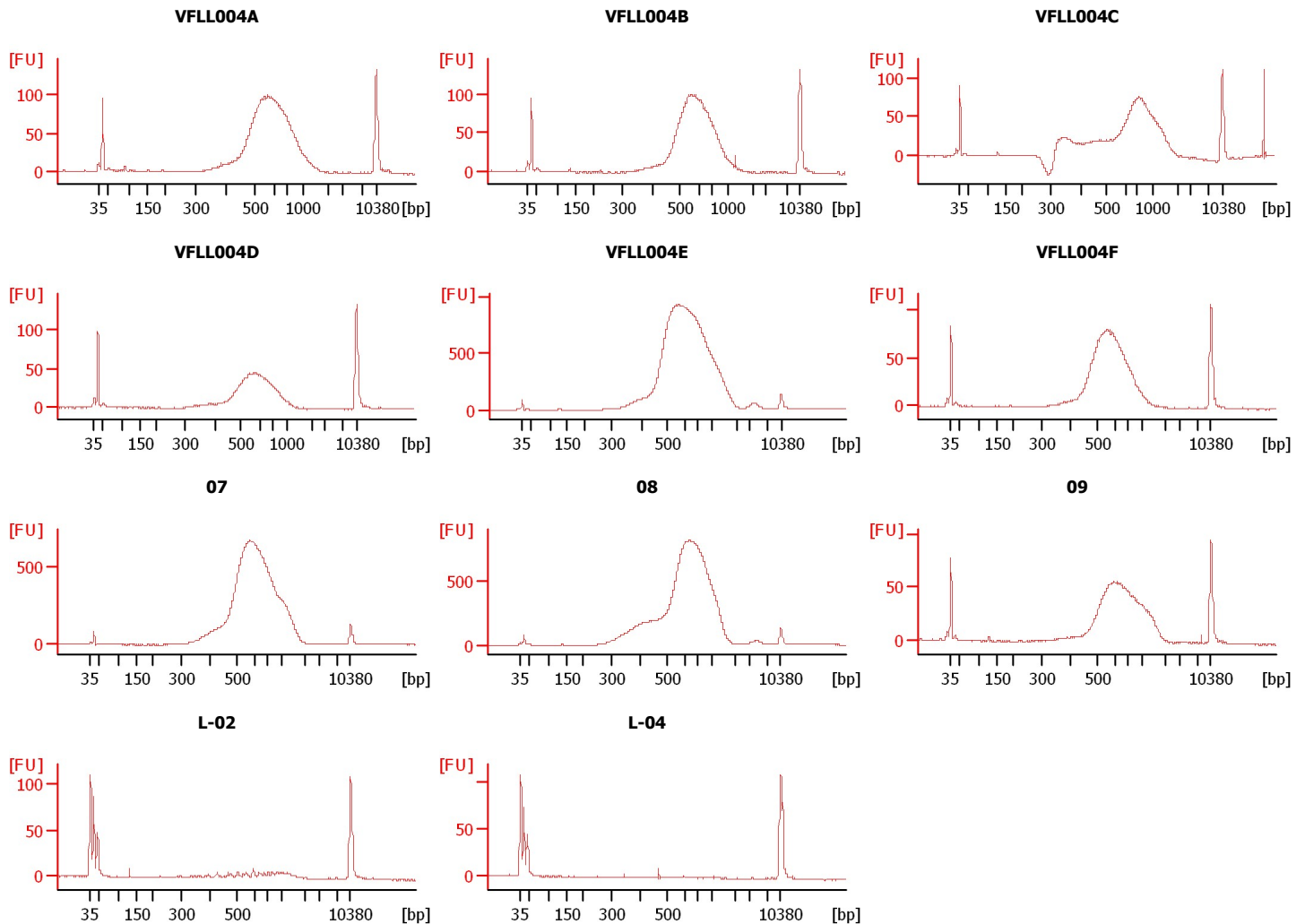
Instrument Name: DE13701086 Firmware: C.01.069
Serial#: DE13701086 Type: G2938B

Assay Information:

Assay Origin Path: C:\Program Files\Agilent\2100 bioanalyzer\2100 expert\assays\dsDNA\High Sensitivity DNA.xsy
Assay Class: High Sensitivity DNA Assay
Version: 1.03
Assay Comments: Copyright © 2003-2010 Agilent Technologies

Chip Information:

Chip Lot #:
Reagent Kit Lot #:
Chip Comments:



Assay Class: High Sensitivity DNA Assay
 Data Path: C:\...ents and Settings\Bioanalyzer\2012-08-22\2012-08-22_002.xad

Created: 8/22/2012 10:15:59 AM
 Modified: 8/22/2012 10:57:20 AM

Electrophoresis File Run Summary (Chip Summary)

Sample Name	Sample Comment	Rest. Digest	Status	Observation	Result Label	Result Color
VFLL004A		<input type="checkbox"/>	✓			
VFLL004B		<input type="checkbox"/>	✓			
VFLL004C		<input type="checkbox"/>	✓			
VFLL004D		<input type="checkbox"/>	✓			
VFLL004E		<input type="checkbox"/>	✓			
VFLL004F		<input type="checkbox"/>	✓			
07		<input type="checkbox"/>	✓			
08		<input type="checkbox"/>	✓			
09		<input type="checkbox"/>	✓			
L-02		<input type="checkbox"/>	✓			
L-04		<input type="checkbox"/>	✓			
Ladder		<input type="checkbox"/>	✓			

Chip Lot #

Reagent Kit Lot #

Chip Comments :

Assay Class: High Sensitivity DNA Assay
Data Path: C:\...ents and Settings\Bioanalyzer\2012-08-22\2012-08-22_002.xad

Created: 8/22/2012 10:15:59 AM
Modified: 8/22/2012 10:57:20 AM

Electrophoresis Assay Details

General Analysis Settings

Number of Available Sample and Ladder Wells (Max.) : 12
Minimum Visible Range [s] : 32
Maximum Visible Range [s] : 138
Start Analysis Time Range [s] : 33
End Analysis Time Range [s] : 137.5
Ladder Concentration [pg/μl] : 1950
Uses Standard Area for Ladder Fragments
Lower Marker Concentration [pg/μl] : 125
Upper Marker Concentration [pg/μl] : 75
Used Upper Marker for Quantitation
Standard Curve Fit is Point to Point
Show Data Aligned to Lower and Upper Marker

Integrator Settings

Integration Start Time [s] : 33.05
Integration End Time [s] : 137
Slope Threshold : 0.8
Height Threshold [FU] : 5
Area Threshold : 0.1
Width Threshold [s] : 0.6
Baseline Plateau [s] : 0.5

Filter Settings

Filter Width [s] : 0.5
Polynomial Order : 4

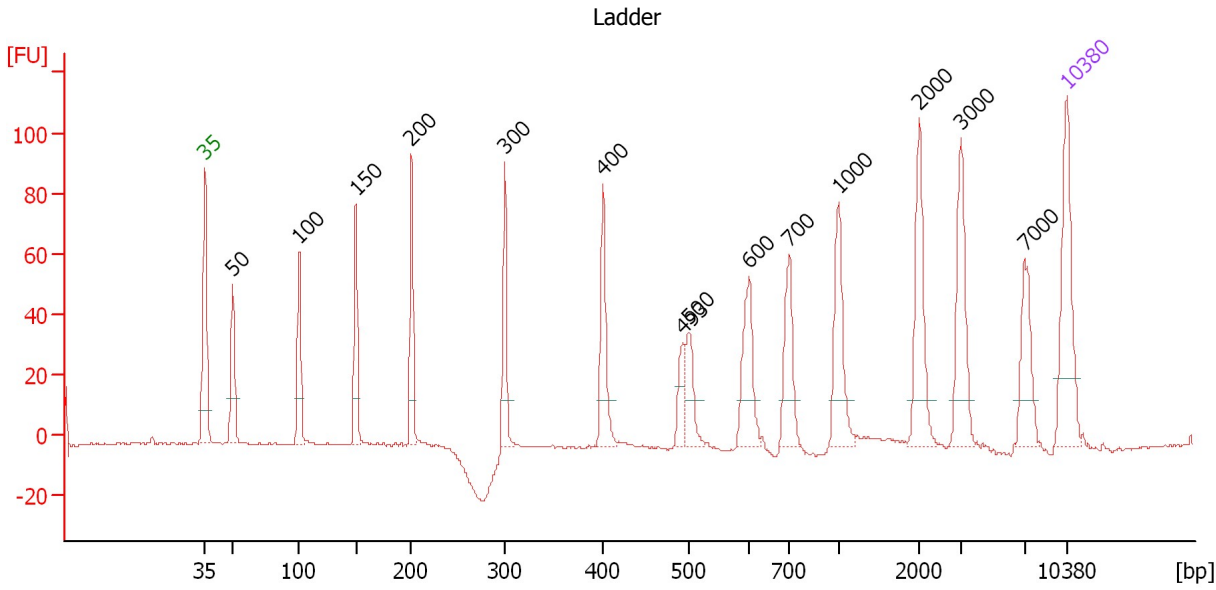
Ladder

Ladder Peak	Size	Area
1	35	160
2	50	210
3	100	208
4	150	221
5	200	242
6	300	270
7	400	305
8	500	306
9	600	336
10	700	321
11	1000	366
12	2000	413
13	3000	411
14	7000	400
15	10380	214

Assay Class: High Sensitivity DNA Assay
 Data Path: C:\...ents and Settings\Bioanalyzer\2012-08-22\2012-08-22_002.xad

Created: 8/22/2012 10:15:59 AM
 Modified: 8/22/2012 10:57:20 AM

Electropherogram Summary



Overall Results for Ladder

Noise: 0.3

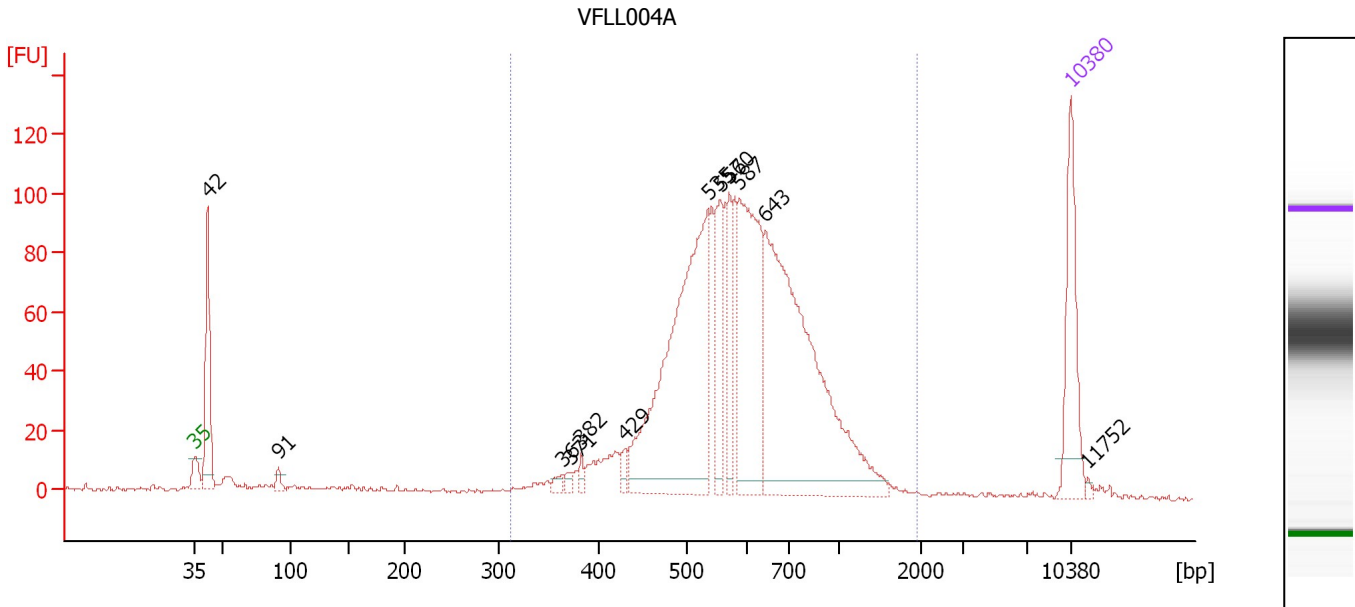
Peak table for Ladder

Peak	Size [bp]	Conc. [pg/μl]	Molarity [pmol/l]	Observations
1	35	125.00	5,411.3	Lower Marker
2	50	150.00	4,545.5	Ladder Peak
3	100	150.00	2,272.7	Ladder Peak
4	150	150.00	1,515.2	Ladder Peak
5	200	150.00	1,136.4	Ladder Peak
6	300	150.00	757.6	Ladder Peak
7	400	150.00	568.2	Ladder Peak
8	493	0.00	0.0	
9	500	150.00	454.5	Ladder Peak
10	600	150.00	378.8	Ladder Peak
11	700	150.00	324.7	Ladder Peak
12	1,000	150.00	227.3	Ladder Peak
13	2,000	150.00	113.6	Ladder Peak
14	3,000	150.00	75.8	Ladder Peak
15	7,000	150.00	32.5	Ladder Peak
16	10,380	75.00	10.9	Upper Marker

Assay Class: High Sensitivity DNA Assay
 Data Path: C:\...ents and Settings\Bioanalyzer\2012-08-22\2012-08-22_002.xad

Created: 8/22/2012 10:15:59 AM
 Modified: 8/22/2012 10:57:20 AM

Electropherogram Summary Continued ...



Overall Results for sample 1 : VFL004A

Number of peaks found: 12 Corr. Area 1: 1,553.0
 Noise: 0.7

Peak table for sample 1 : VFL004A

Peak	Size [bp]	Conc. [pg/μl]	Molarity [pmol/l]	Observations
1	35	125.00	5,411.3	Lower Marker
2	42	140.34	5,085.5	
3	91	10.42	172.9	
4	363	7.68	32.0	
5	371	6.13	25.0	
6	382	7.58	30.1	
7	429	10.44	36.9	
8	535	390.21	1,104.7	
9	556	73.94	201.5	
10	570	59.66	158.6	
11	587	200.92	519.0	
12	643	429.81	1,013.2	
13	10,380	75.00	10.9	Upper Marker
14	11,752	0.00	0.0	

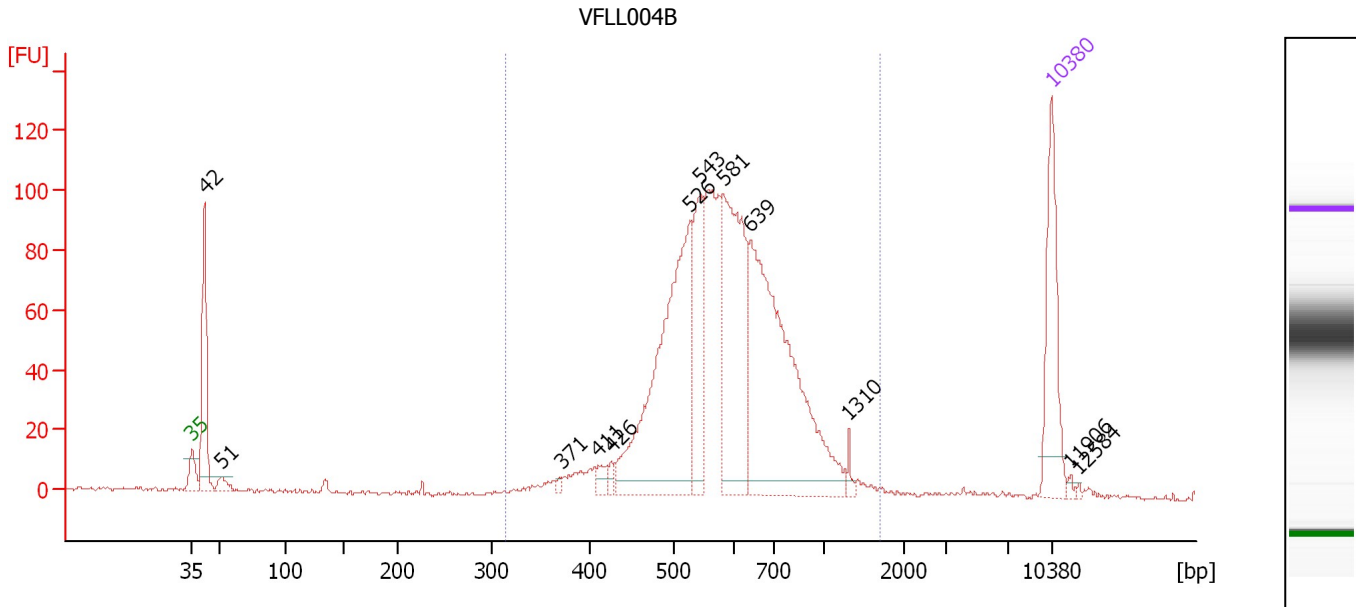
Region table for sample 1 : VFL004A

From [bp]	To [bp]	Average Size [bp]	Molarity [pmol/l]	Conc. [pg/μl]	Corr. Area	% of Total	Size distribution in CV [%]	Color
311	1,968	630	3,600.5	1,367.91	1,553.0	88	31.3	Blue

Assay Class: High Sensitivity DNA Assay
 Data Path: C:\...ents and Settings\Bioanalyzer\2012-08-22\2012-08-22_002.xad

Created: 8/22/2012 10:15:59 AM
 Modified: 8/22/2012 10:57:20 AM

Electropherogram Summary Continued ...



Overall Results for sample 2 : VFL004B

Number of peaks found: 12 Corr. Area 1: 1,382.4
 Noise: 0.7

Peak table for sample 2 : VFL004B

Peak	Size [bp]	Conc. [pg/μl]	Molarity [pmol/l]	Observations
1	35	125.00	5,411.3	Lower Marker
2	42	137.51	5,001.7	
3	51	13.69	404.5	
4	371	3.81	15.6	
5	411	12.05	44.4	
6	426	7.15	25.4	
7	526	309.35	891.8	
8	543	99.36	277.1	
9	581	206.21	537.3	
10	639	335.82	796.3	
11	1,310	6.26	7.2	
12	10,380	75.00	10.9	Upper Marker
13	11,906	0.00	0.0	
14	12,584	0.00	0.0	

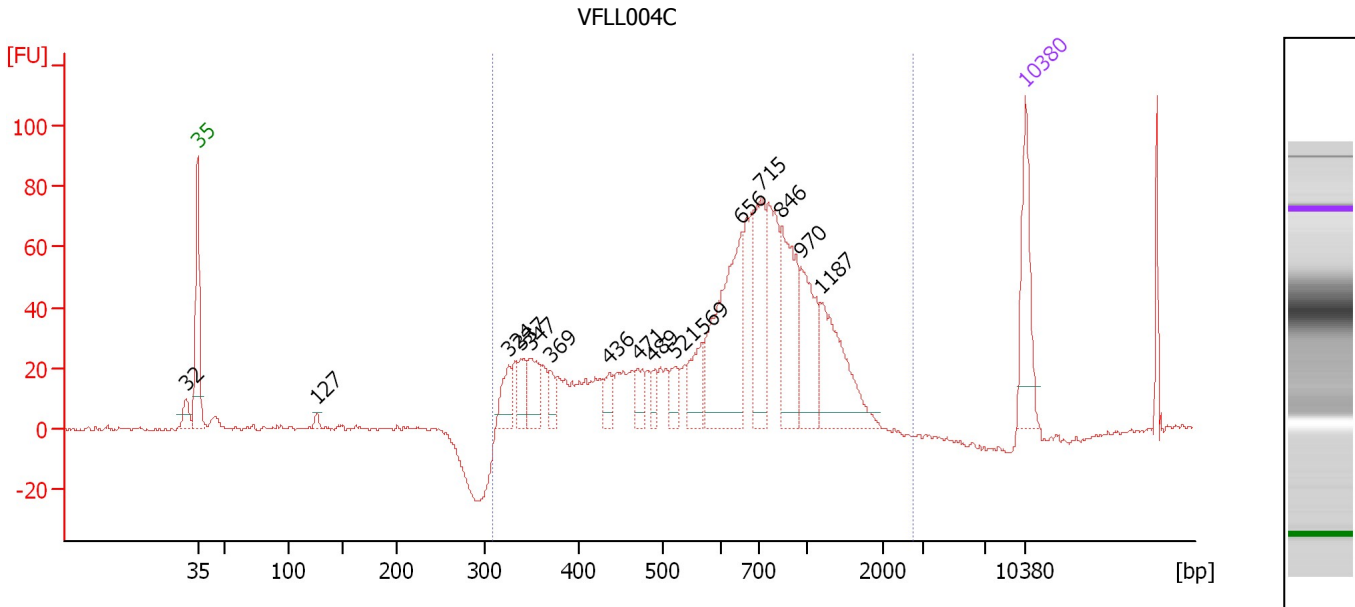
Region table for sample 2 : VFL004B

From [bp]	To [bp]	Average Size [bp]	Molarity [pmol/l]	Conc. [pg/μl]	Corr. Area	% of Total	Size distribution in CV [%]	Color
315	1,706	617	3,065.5	1,164.93	1,382.4	90	27.0	Blue

Assay Class: High Sensitivity DNA Assay
 Data Path: C:\...ents and Settings\Bioanalyzer\2012-08-22\2012-08-22_002.xad

Created: 8/22/2012 10:15:59 AM
 Modified: 8/22/2012 10:57:20 AM

Electropherogram Summary Continued ...



Overall Results for sample 3 : VFL004C

Number of peaks found: 16 Corr. Area 1: 1,176.6
 Noise: 0.6

Peak table for sample 3 : VFL004C

Peak	Size [bp]	Conc. [pg/μl]	Molarity [pmol/l]	Observations
1	32	0.00	0.0	
2	35	125.00	5,411.3	Lower Marker
3	127	7.58	90.6	
4	324	41.83	195.3	
5	337	35.89	161.4	
6	347	48.58	212.1	
7	369	23.47	96.5	
8	436	23.99	83.4	
9	471	28.81	92.7	
10	489	18.28	56.7	
11	521	27.91	81.2	
12	569	50.41	134.2	
13	656	213.14	492.2	
14	715	110.50	234.3	
15	846	127.68	228.8	
16	970	95.89	149.8	
17	1,187	116.13	148.3	
18	10,380	75.00	10.9	Upper Marker

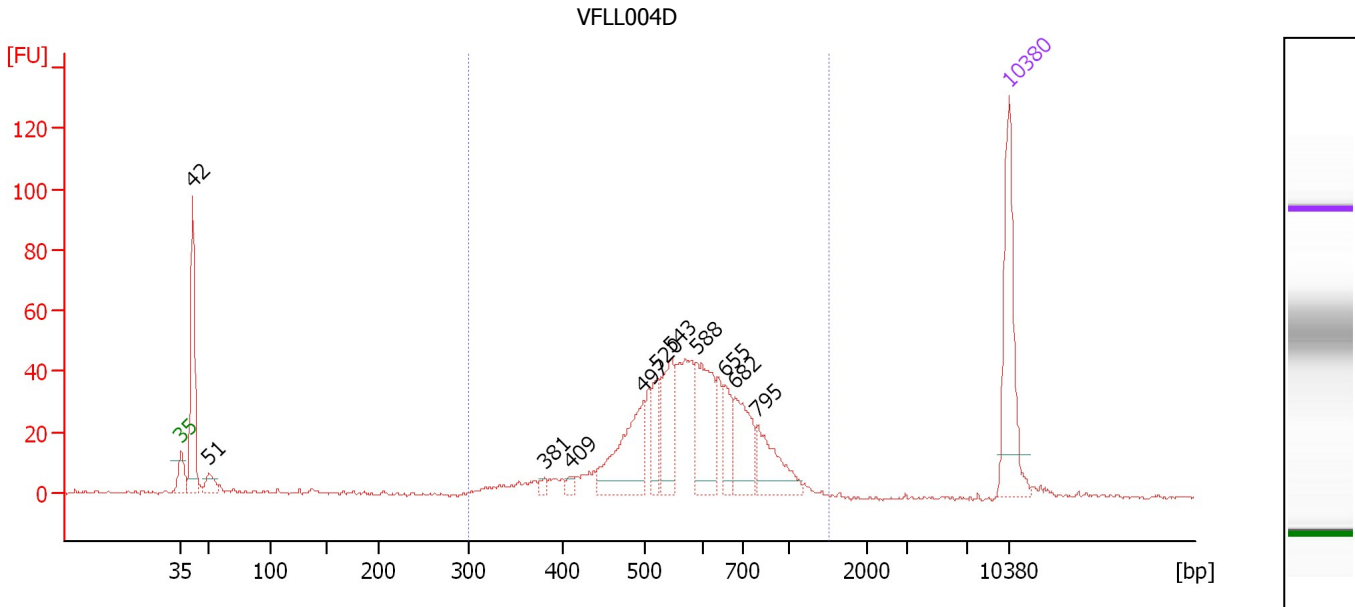
Region table for sample 3 : VFL004C

From [bp]	To [bp]	Average Size [bp]	Molarity [pmol/l]	Conc. [pg/μl]	Corr. Area	% of Total	Size distribution in CV [%]	Color
308	2,720	729	3,701.5	1,418.22	1,176.6	95	43.0	Blue

Assay Class: High Sensitivity DNA Assay
 Data Path: C:\...ents and Settings\Bioanalyzer\2012-08-22\2012-08-22_002.xad

Created: 8/22/2012 10:15:59 AM
 Modified: 8/22/2012 10:57:20 AM

Electropherogram Summary Continued ...



Overall Results for sample 4 : VFL004D

Number of peaks found: 11 Corr. Area 1: 642.4
 Noise: 0.6

Peak table for sample 4 : VFL004D

Peak	Size [bp]	Conc. [pg/μl]	Molarity [pmol/l]	Observations
1	35	125.00	5,411.3	Lower Marker
2	42	141.07	5,137.2	
3	51	19.53	581.8	
4	381	4.72	18.8	
5	409	5.49	20.3	
6	497	88.66	270.1	
7	520	28.56	83.2	
8	543	55.41	154.6	
9	588	76.24	196.3	
10	655	29.72	68.8	
11	682	52.82	117.3	
12	795	48.08	91.6	
13	10,380	75.00	10.9	Upper Marker

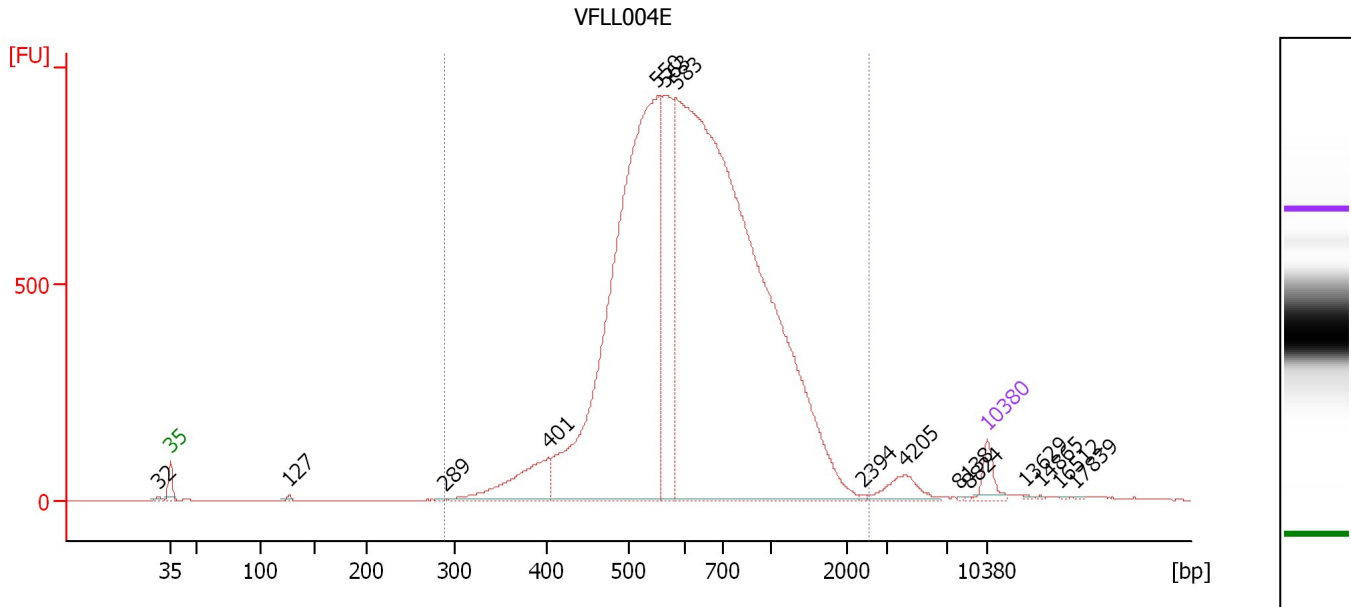
Region table for sample 4 : VFL004D

From [bp]	To [bp]	Average Size [bp]	Molarity [pmol/l]	Conc. [pg/μl]	Corr. Area	% of Total	Size distribution in CV [%]	Color
300	1,519	600	1,515.7	558.78	642.4	83	24.6	Blue

Assay Class: High Sensitivity DNA Assay
 Data Path: C:\...ents and Settings\Bioanalyzer\2012-08-22\2012-08-22_002.xad

Created: 8/22/2012 10:15:59 AM
 Modified: 8/22/2012 10:57:20 AM

Electropherogram Summary Continued ...



Overall Results for sample 5 : VFL004E

Number of peaks found: 15 Corr. Area 1: 16,073.8
 Noise: 0.7

Peak table for sample 5 : VFL004E

Peak	Size [bp]	Conc. [pg/μl]	Molarity [pmol/l]	Observations
1	32	0.00	0.0	
2	35	125.00	5,411.3	Lower Marker
3	127	13.80	164.5	
4	289	7.22	37.9	
5	401	412.15	1,557.9	
6	550	4,132.02	11,374.4	
7	563	903.49	2,432.0	
8	583	6,770.40	17,595.4	
9	2,394	4.25	2.7	
10	4,205	105.83	38.1	
11	8,138	1.89	0.4	
12	8,824	2.31	0.4	
13	10,380	75.00	10.9	Upper Marker
14	13,629	0.00	0.0	
15	14,865	0.00	0.0	
16	16,512	0.00	0.0	
17	17,839	0.00	0.0	

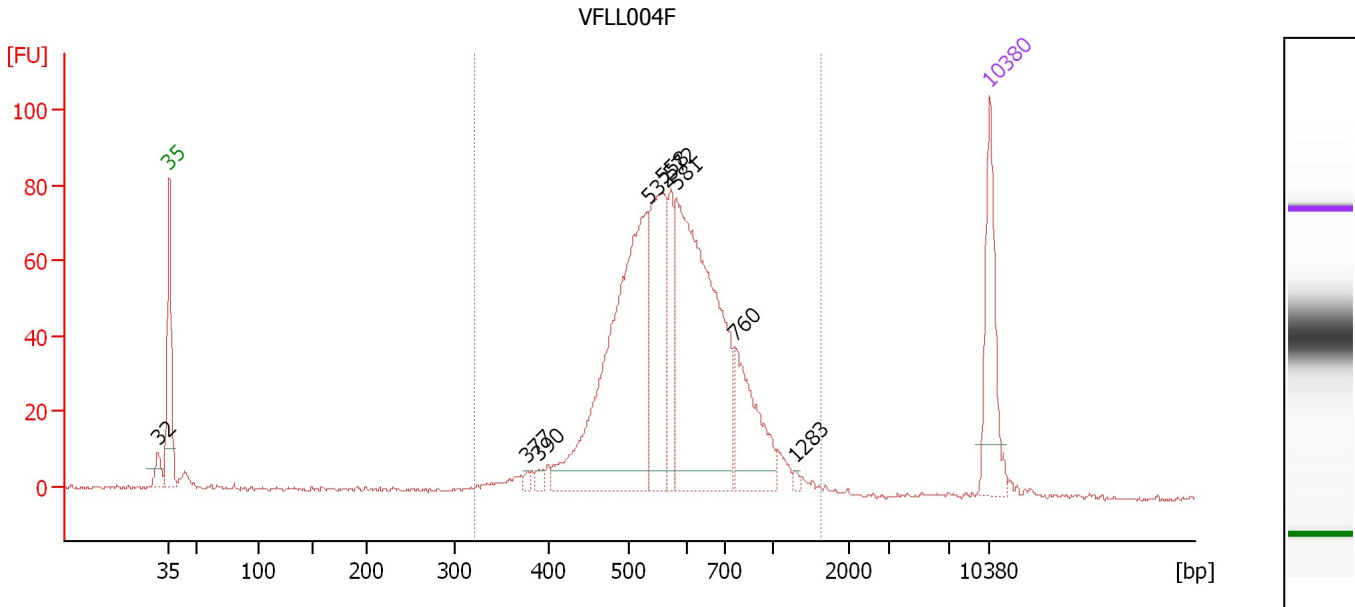
Region table for sample 5 : VFL004E

From [bp]	To [bp]	Average Size [bp]	Molarity [pmol/l]	Conc. [pg/μl]	Corr. Area	% of Total	Size distribution in CV [%]	Color
290	2,557	697	29,822.3	11,929.91	16,073.8	98	40.5	Blue

Assay Class: High Sensitivity DNA Assay
 Data Path: C:\...ents and Settings\Bioanalyzer\2012-08-22\2012-08-22_002.xad

Created: 8/22/2012 10:15:59 AM
 Modified: 8/22/2012 10:57:20 AM

Electropherogram Summary Continued ...



Overall Results for sample 6 : VFL004F

Number of peaks found: 9 Corr. Area 1: 1,081.4
 Noise: 0.5

Peak table for sample 6 : VFL004F

Peak	Size [bp]	Conc. [pg/μl]	Molarity [pmol/l]	Observations
1	32	0.00	0.0	
2	35	125.00	5,411.3	Lower Marker
3	377	4.67	18.8	
4	390	6.29	24.4	
5	532	385.40	1,097.7	
6	558	155.38	422.0	
7	572	60.35	159.8	
8	581	373.58	974.3	
9	760	99.52	198.5	
10	1,283	2.81	3.3	
11	10,380	75.00	10.9	Upper Marker

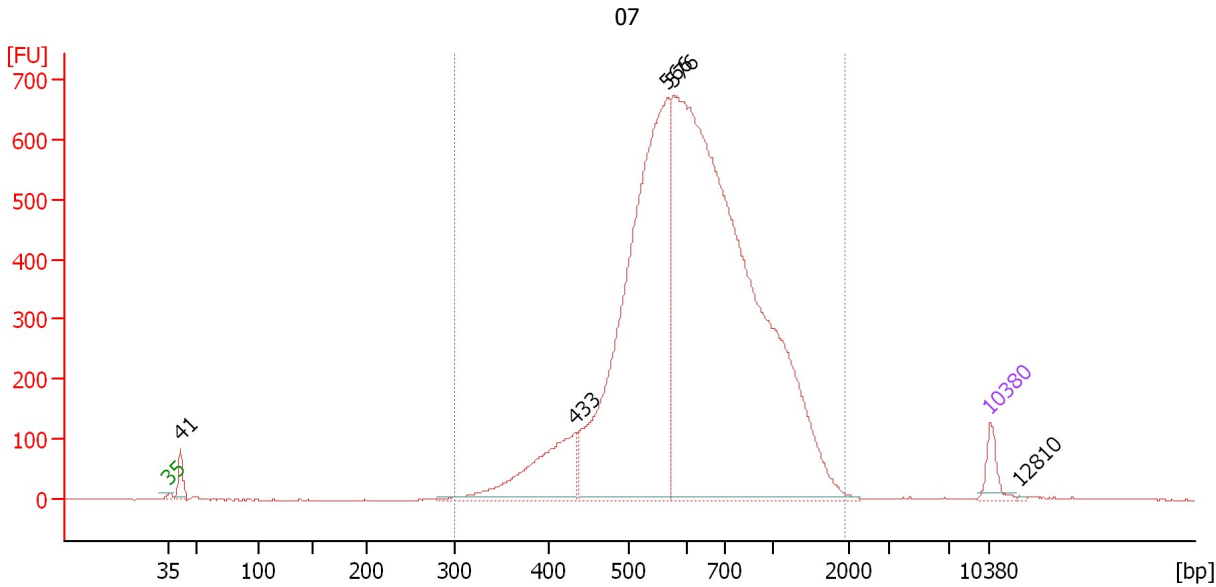
Region table for sample 6 : VFL004F

From [bp]	To [bp]	Average Size [bp]	Molarity [pmol/l]	Conc. [pg/μl]	Corr. Area	% of Total	Size distribution in CV [%]	Color
322	1,623	604	3,115.9	1,163.09	1,081.4	97	26.2	Blue

Assay Class: High Sensitivity DNA Assay
 Data Path: C:\...ents and Settings\Bioanalyzer\2012-08-22\2012-08-22_002.xad

Created: 8/22/2012 10:15:59 AM
 Modified: 8/22/2012 10:57:20 AM

Electropherogram Summary Continued ...



Overall Results for sample 7 : 07

Number of peaks found: 5 Corr. Area 1: 10,372.9
 Noise: 0.4

Peak table for sample 7 : 07

Peak	Size [bp]	Conc. [pg/μl]	Molarity [pmol/l]	Observations
1	35	125.00	5,411.3	Lower Marker
2	41	126.98	4,662.8	
3	433	602.29	2,105.3	
4	566	2,890.56	7,743.6	
5	576	5,178.18	13,617.7	
6	10,380	75.00	10.9	Upper Marker
7	12,810	0.00	0.0	

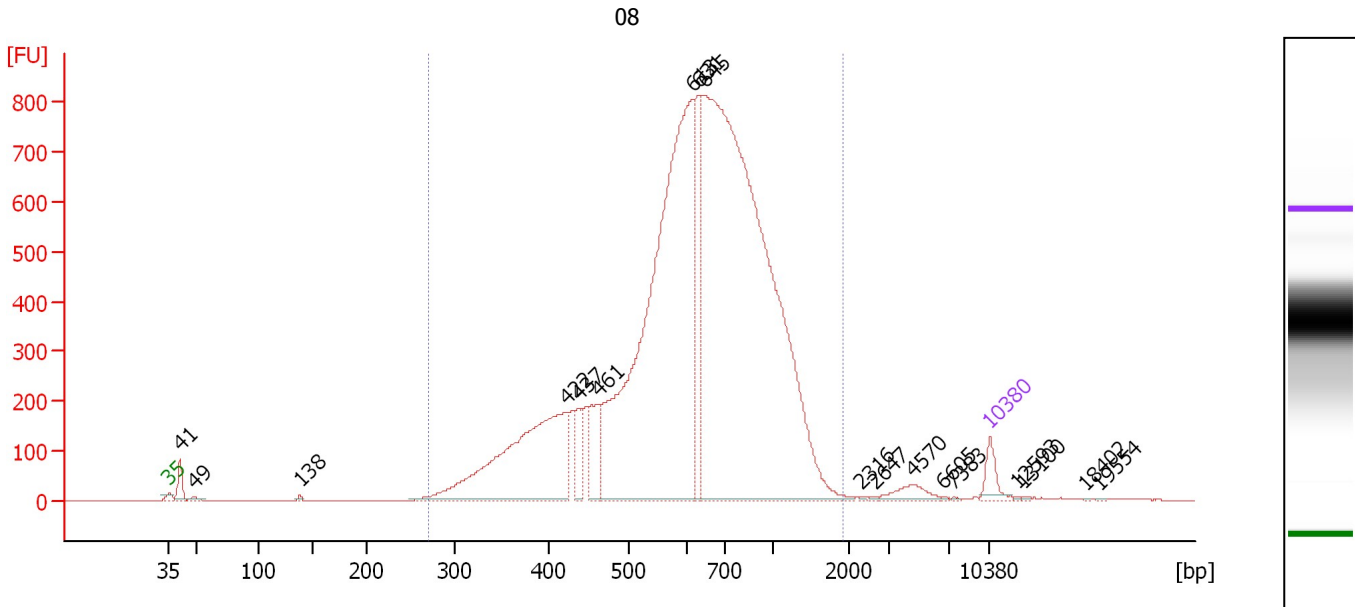
Region table for sample 7 : 07

From [bp]	To [bp]	Average Size [bp]	Molarity [pmol/l]	Conc. [pg/μl]	Corr. Area	% of Total	Size distribution in CV [%]	Color
300	1,939	681	21,327.5	8,463.48	10,372.8	98	37.0	Blue

Assay Class: High Sensitivity DNA Assay
 Data Path: C:\...ents and Settings\Bioanalyzer\2012-08-22\2012-08-22_002.xad

Created: 8/22/2012 10:15:59 AM
 Modified: 8/22/2012 10:57:20 AM

Electropherogram Summary Continued ...



Overall Results for sample 8 : 08

Number of peaks found: 18 Corr. Area 1: 13,058.1
 Noise: 0.3

Peak table for sample 8 : 08

Peak	Size [bp]	Conc. [pg/μl]	Molarity [pmol/l]	Observations
1	35	125.00	5,411.3	Lower Marker
2	41	119.27	4,376.0	
3	49	18.37	569.8	
4	138	11.38	124.9	
5	422	1,356.98	4,873.2	
6	437	144.71	501.2	
7	461	222.83	732.0	
8	613	3,422.23	8,453.2	
9	631	519.32	1,247.3	
10	645	5,071.18	11,905.0	
11	2,316	2.92	1.9	
12	2,647	4.21	2.4	
13	4,570	66.84	22.2	
14	6,605	3.16	0.7	
15	7,383	3.36	0.7	
16	10,380	75.00	10.9	Upper Marker
17	12,593	0.00	0.0	
18	13,100	0.00	0.0	
19	18,402	0.00	0.0	
20	19,554	0.00	0.0	

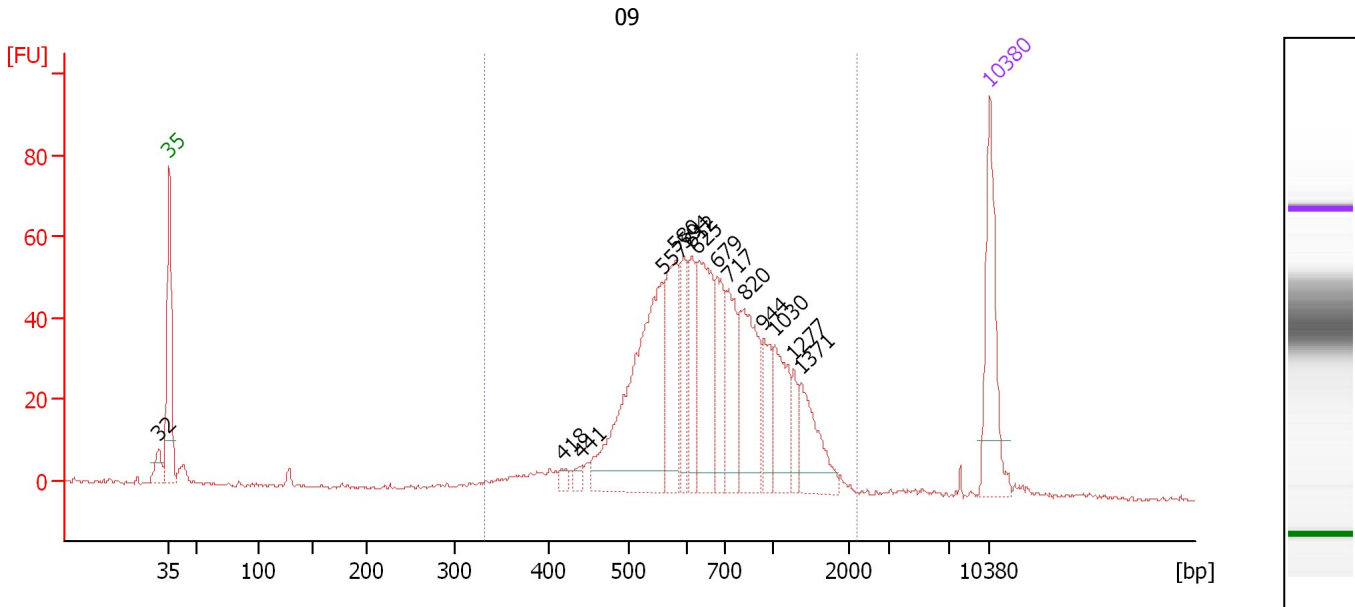
Region table for sample 8 : 08

From [bp]	To [bp]	Average Size [bp]	Molarity [pmol/l]	Conc. [pg/μl]	Corr. Area	% of Total	Size distribution in CV [%]	Color
271	1,912	685	28,125.9	10,957.85	13,058.1	97	35.9	Blue

Assay Class: High Sensitivity DNA Assay
 Data Path: C:\...ents and Settings\Bioanalyzer\2012-08-22\2012-08-22_002.xad

Created: 8/22/2012 10:15:59 AM
 Modified: 8/22/2012 10:57:20 AM

Electropherogram Summary Continued ...



Overall Results for sample 9 : 09

Number of peaks found: 15 Corr. Area 1: 906.6
 Noise: 0.4

Peak table for sample 9 : 09

Peak	Size [bp]	Conc. [pg/μl]	Molarity [pmol/l]	Observations
1	32	0.00	0.0	
2	35	125.00	5,411.3	Lower Marker
3	418	6.67	24.2	
4	441	7.80	26.8	
5	557	241.26	656.8	
6	580	91.65	239.5	
7	594	49.95	127.3	
8	612	49.61	122.8	
9	625	113.07	274.0	
10	679	61.23	136.6	
11	717	67.95	143.5	
12	820	103.07	190.5	
13	944	37.78	60.6	
14	1,030	56.56	83.2	
15	1,277	18.44	21.9	
16	1,371	53.87	59.5	
17	10,380	75.00	10.9	Upper Marker

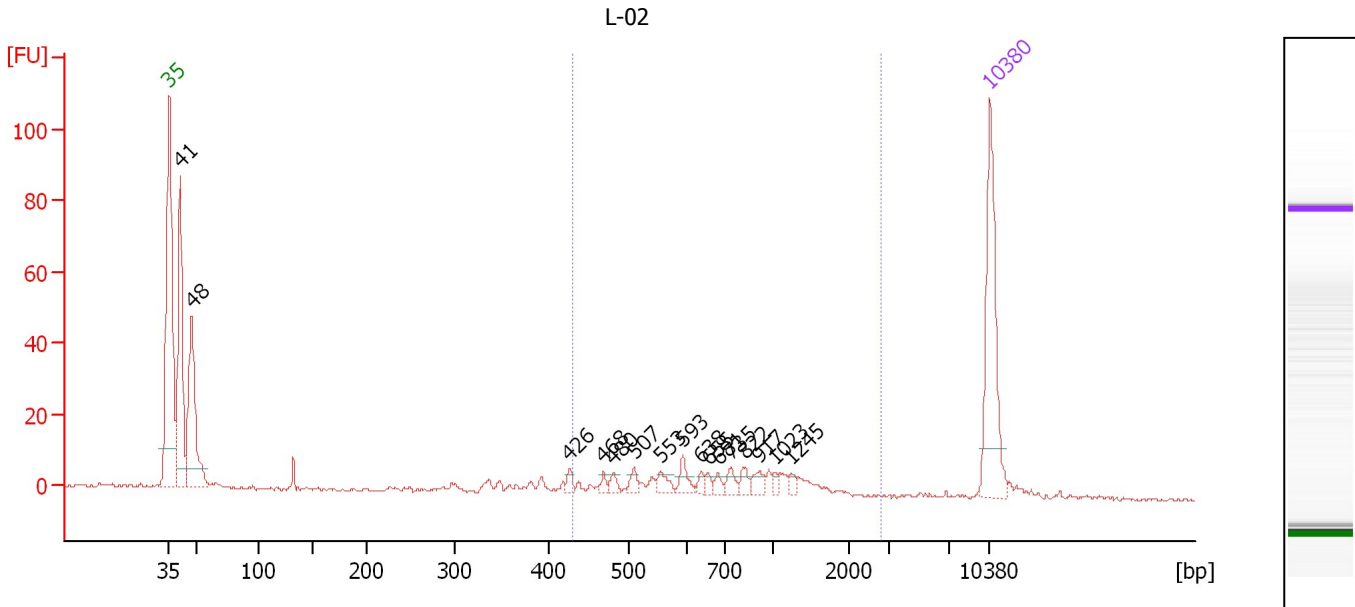
Region table for sample 9 : 09

From [bp]	To [bp]	Average Size [bp]	Molarity [pmol/l]	Conc. [pg/μl]	Corr. Area	% of Total	Size distribution in CV [%]	Color
332	2,210	753	2,393.1	1,023.42	906.6	95	40.2	Blue

Assay Class: High Sensitivity DNA Assay
 Data Path: C:\...ents and Settings\Bioanalyzer\2012-08-22\2012-08-22_002.xad

Created: 8/22/2012 10:15:59 AM
 Modified: 8/22/2012 10:57:20 AM

Electropherogram Summary Continued ...



Overall Results for sample 10 : L-02

Number of peaks found: 16 Corr. Area 1: 101.0
 Noise: 0.6

Peak table for sample 10 : L-02

Peak	Size [bp]	Conc. [pg/μl]	Molarity [pmol/l]	Observations
1	35	125.00	5,411.3	Lower Marker
2	41	159.01	5,840.9	
3	48	132.72	4,206.1	
4	426	5.10	18.1	
5	468	3.89	12.6	
6	480	5.52	17.4	
7	507	6.54	19.5	
8	553	8.16	22.3	
9	593	9.97	25.5	
10	638	4.36	10.4	
11	655	4.18	9.7	
12	681	4.90	10.9	
13	735	7.29	15.0	
14	822	6.38	11.8	
15	917	7.58	12.5	
16	1,023	4.13	6.1	
17	1,245	3.37	4.1	
18	10,380	75.00	10.9	Upper Marker

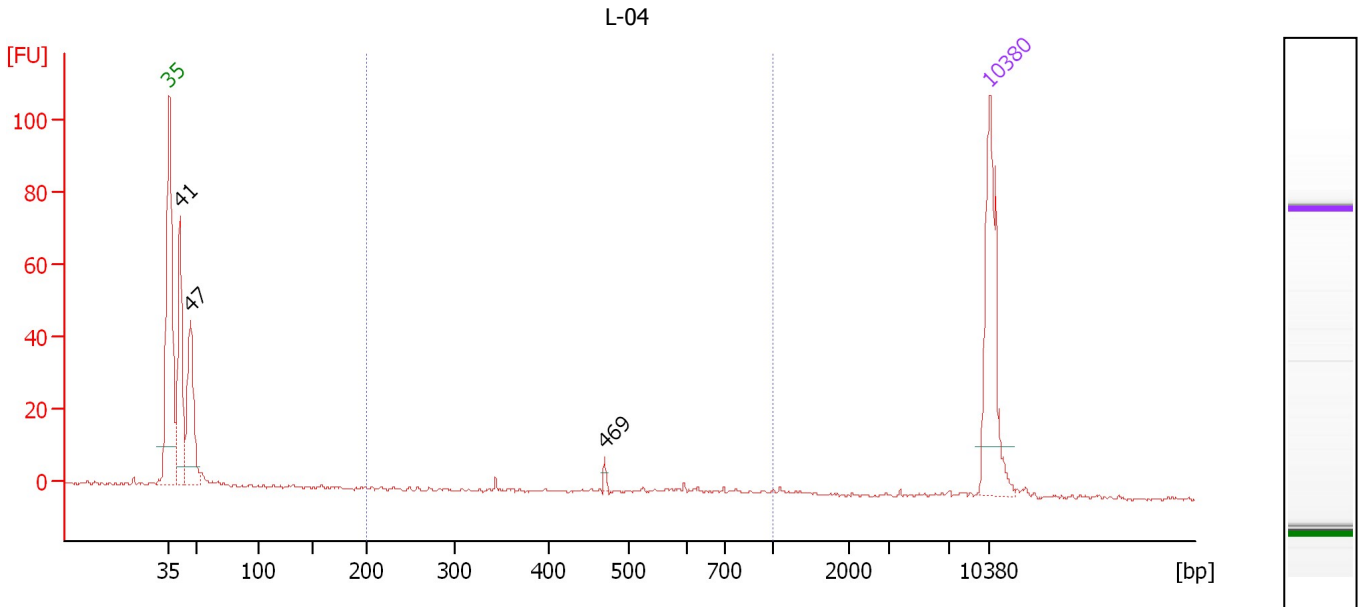
Region table for sample 10 : L-02

From [bp]	To [bp]	Average Size [bp]	Molarity [pmol/l]	Conc. [pg/μl]	Corr. Area	% of Total	Size distribution in CV [%]	Color
431	2,811	839	221.8	101.95	101.0	33	42.5	Blue

Assay Class: High Sensitivity DNA Assay
 Data Path: C:\...ents and Settings\Bioanalyzer\2012-08-22\2012-08-22_002.xad

Created: 8/22/2012 10:15:59 AM
 Modified: 8/22/2012 10:57:20 AM

Electropherogram Summary Continued ...



Overall Results for sample 11 : L-04

Number of peaks found: 3 Corr. Area 1: 9.1
 Noise: 0.4

Peak table for sample 11 : L-04

Peak	Size [bp]	Conc. [pg/μl]	Molarity [pmol/l]	Observations
1	35	125.00	5,411.3	Lower Marker
2	41	119.15	4,376.3	
3	47	99.10	3,202.9	
4	469	3.05	9.9	
5	10,380	75.00	10.9	Upper Marker

Region table for sample 11 : L-04

From [bp]	To [bp]	Average Size [bp]	Molarity [pmol/l]	Conc. [pg/μl]	Corr. Area	% of Total	Size distribution in CV [%]	Color
200	1,000	551	26.4	8.61	9.1	5	26.3	Blue

Assay Class: High Sensitivity DNA Assay
Data Path: C:\...ents and Settings\Bioanalyzer\2012-08-22\2012-08-22_002.xad

Created: 8/22/2012 10:15:59 AM
Modified: 8/22/2012 10:57:20 AM

Gel Image