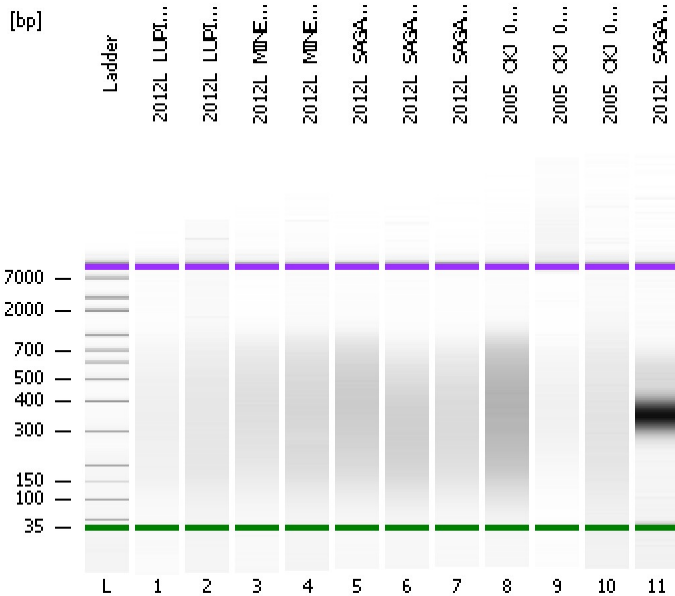


Assay Class: High Sensitivity DNA Assay
Data Path: C:\...ents and Settings\Bioanalyzer\2012-08-22\2012-08-22_003.xad

Created: 8/22/2012 2:23:53 PM
Modified: 8/22/2012 3:07:18 PM

Electrophoresis File Run Summary



Instrument Information:

Instrument Name: DE13701086 Firmware: C.01.069
Serial#: DE13701086 Type: G2938B

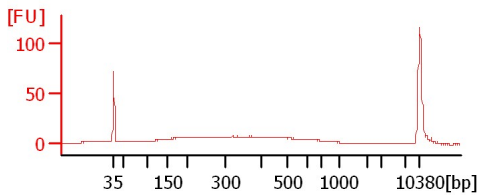
Assay Information:

Assay Origin Path: C:\Program Files\Agilent\2100 bioanalyzer\2100 expert\assays\dsDNA\High Sensitivity DNA.xsy
Assay Class: High Sensitivity DNA Assay
Version: 1.03
Assay Comments: Copyright © 2003-2010 Agilent Technologies

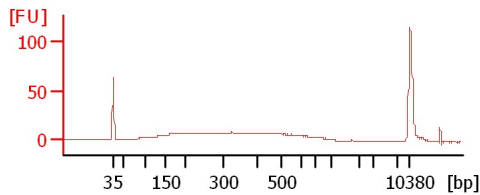
Chip Information:

Chip Lot #:
Reagent Kit Lot #:
Chip Comments:

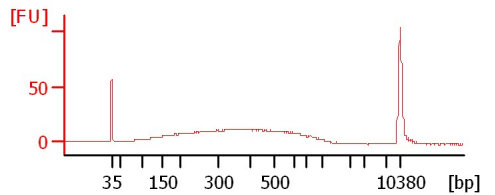
2012L_LUPI_063_7x15s90s



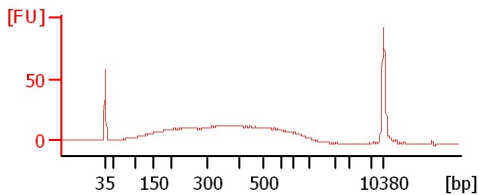
2012L_LUPI_066_7x15s90s



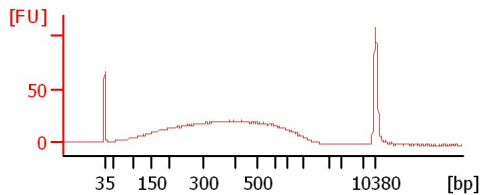
2012L_MINE_103_7x15s90s



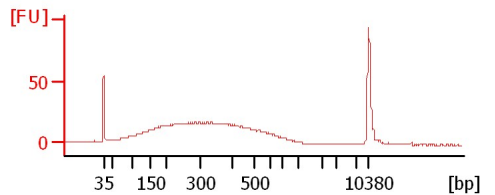
2012L_MINE_108_7x15s90s



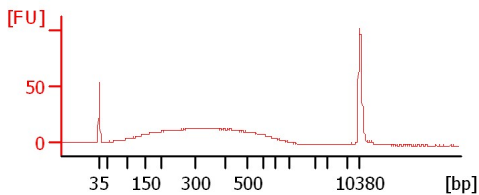
2012L_SAGA_065_7x15s90s



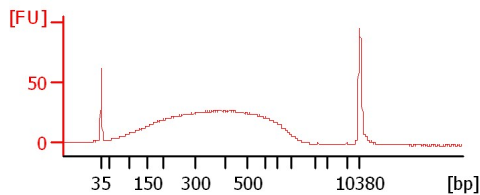
2012L_SAGA_066_7x15s90s



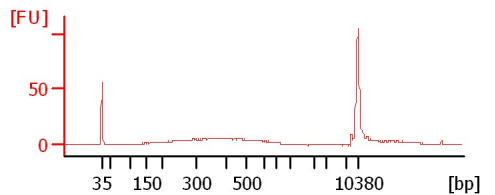
2012L_SAGA_107_7x15s90s



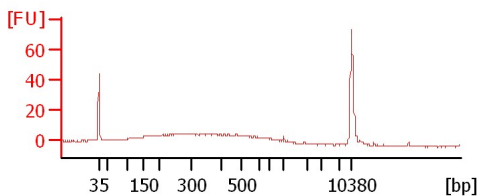
2005_OKJ_070_7x15s90s



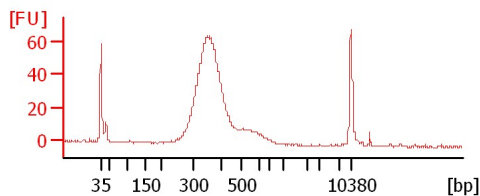
2005_OKJ_061_7x15s90s



2005_OKJ_019_1x15s90s



2012L_SAGA_141_NoShear



Assay Class: High Sensitivity DNA Assay
Data Path: C:\...ents and Settings\Bioanalyzer\2012-08-22\2012-08-22_003.xad

Created: 8/22/2012 2:23:53 PM
Modified: 8/22/2012 3:07:18 PM

Electrophoresis File Run Summary (Chip Summary)

Sample Name	Sample Comment	Rest. Digest	Status	Observation	Result Label	Result Color
2012L_LUPI_063_7x15s90s		<input type="checkbox"/>	✓			
2012L_LUPI_066_7x15s90s		<input type="checkbox"/>	✓			
2012L_MINE_103_7x15s90s		<input type="checkbox"/>	✓			
2012L_MINE_108_7x15s90s		<input type="checkbox"/>	✓			
2012L_SAGA_065_7x15s90s		<input type="checkbox"/>	✓			
2012L_SAGA_066_7x15s90s		<input type="checkbox"/>	✓			
2012L_SAGA_107_7x15s90s		<input type="checkbox"/>	✓			
2005_OKJ_070_7x15s90s		<input type="checkbox"/>	✓			
2005_OKJ_061_7x15s90s		<input type="checkbox"/>	✓			
2005_OKJ_019_1x15s90s		<input type="checkbox"/>	✓			
2012L_SAGA_141_NoShear		<input type="checkbox"/>	✓			
Ladder		<input type="checkbox"/>	✓			

Chip Lot #

Reagent Kit Lot #

Chip Comments :

Assay Class: High Sensitivity DNA Assay
Data Path: C:\...ents and Settings\Bioanalyzer\2012-08-22\2012-08-22_003.xad

Created: 8/22/2012 2:23:53 PM
Modified: 8/22/2012 3:07:18 PM

Electrophoresis Assay Details

General Analysis Settings

Number of Available Sample and Ladder Wells (Max.) : 12
Minimum Visible Range [s] : 32
Maximum Visible Range [s] : 138
Start Analysis Time Range [s] : 33
End Analysis Time Range [s] : 137.5
Ladder Concentration [pg/μl] : 1950
Uses Standard Area for Ladder Fragments
Lower Marker Concentration [pg/μl] : 125
Upper Marker Concentration [pg/μl] : 75
Used Upper Marker for Quantitation
Standard Curve Fit is Point to Point
Show Data Aligned to Lower and Upper Marker

Integrator Settings

Integration Start Time [s] : 33.05
Integration End Time [s] : 137
Slope Threshold : 0.8
Height Threshold [FU] : 5
Area Threshold : 0.1
Width Threshold [s] : 0.6
Baseline Plateau [s] : 0.5

Filter Settings

Filter Width [s] : 0.5
Polynomial Order : 4

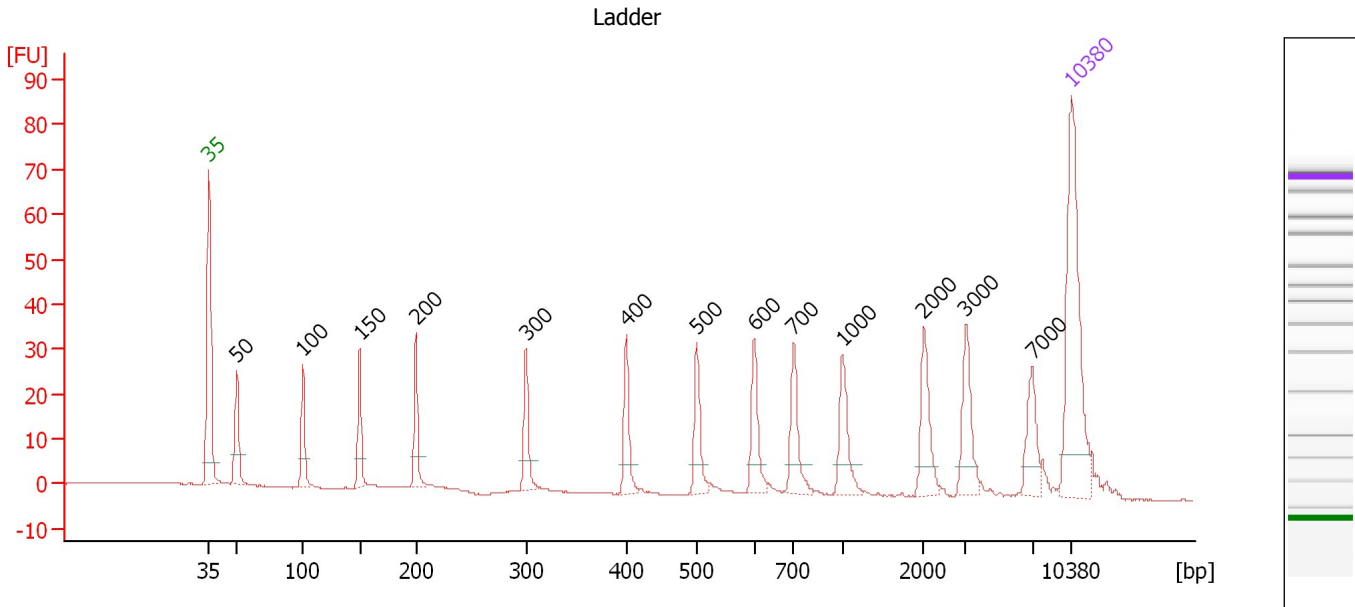
Ladder

Ladder Peak	Size	Area
1	35	160
2	50	210
3	100	208
4	150	221
5	200	242
6	300	270
7	400	305
8	500	306
9	600	336
10	700	321
11	1000	366
12	2000	413
13	3000	411
14	7000	400
15	10380	214

Assay Class: High Sensitivity DNA Assay
 Data Path: C:\...ents and Settings\Bioanalyzer\2012-08-22\2012-08-22_003.xad

Created: 8/22/2012 2:23:53 PM
 Modified: 8/22/2012 3:07:18 PM

Electropherogram Summary



Overall Results for Ladder

Noise: 0.1

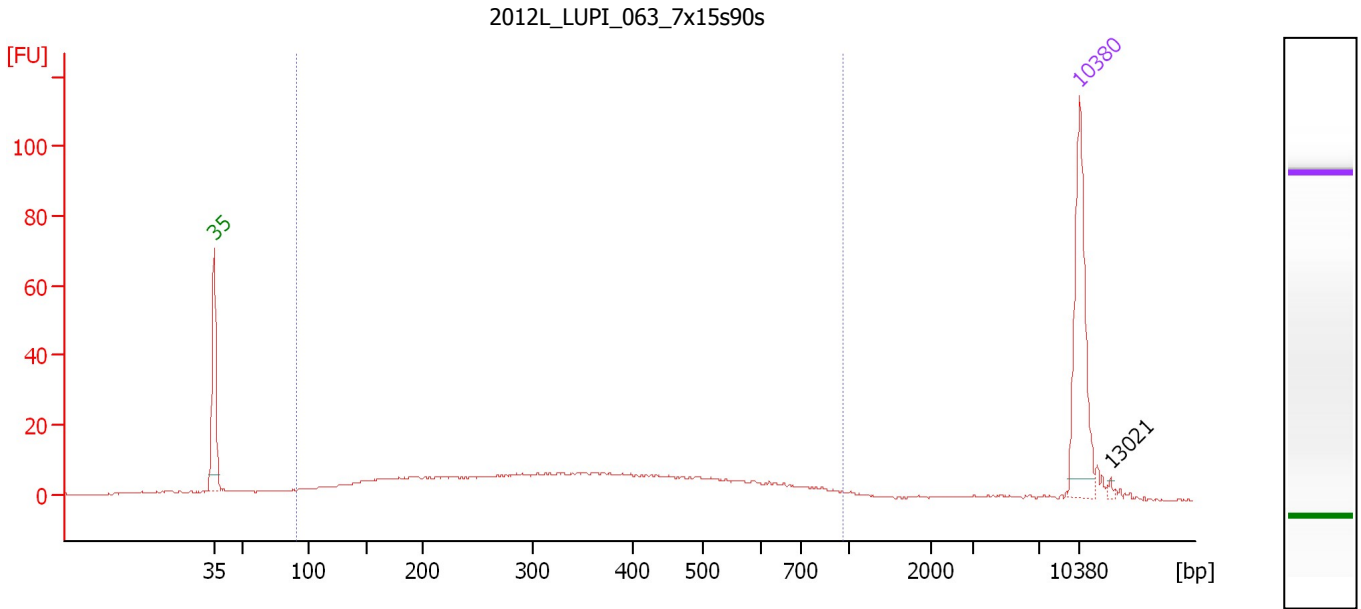
Peak table for Ladder

Peak	Size [bp]	Conc. [pg/µl]	Molarity [pmol/l]	Observations
1	35	125.00	5,411.3	Lower Marker
2	50	150.00	4,545.5	Ladder Peak
3	100	150.00	2,272.7	Ladder Peak
4	150	150.00	1,515.2	Ladder Peak
5	200	150.00	1,136.4	Ladder Peak
6	300	150.00	757.6	Ladder Peak
7	400	150.00	568.2	Ladder Peak
8	500	150.00	454.5	Ladder Peak
9	600	150.00	378.8	Ladder Peak
10	700	150.00	324.7	Ladder Peak
11	1,000	150.00	227.3	Ladder Peak
12	2,000	150.00	113.6	Ladder Peak
13	3,000	150.00	75.8	Ladder Peak
14	7,000	150.00	32.5	Ladder Peak
15	10,380	75.00	10.9	Upper Marker

Assay Class: High Sensitivity DNA Assay
 Data Path: C:\...ents and Settings\Bioanalyzer\2012-08-22\2012-08-22_003.xad

Created: 8/22/2012 2:23:53 PM
 Modified: 8/22/2012 3:07:18 PM

Electropherogram Summary Continued ...



Overall Results for sample 1 : 2012L_LUPI_063_7x15s90s

Number of peaks found: 1 Corr. Area 1: 323.4
 Noise: 0.1

Peak table for sample 1 : 2012L_LUPI_063_7x15s90s

Peak	Size [bp]	Conc. [pg/μl]	Molarity [pmol/l]	Observations
1	35	125.00	5,411.3	Lower Marker
2	10,380	75.00	10.9	Upper Marker
3	13,021	0.00	0.0	

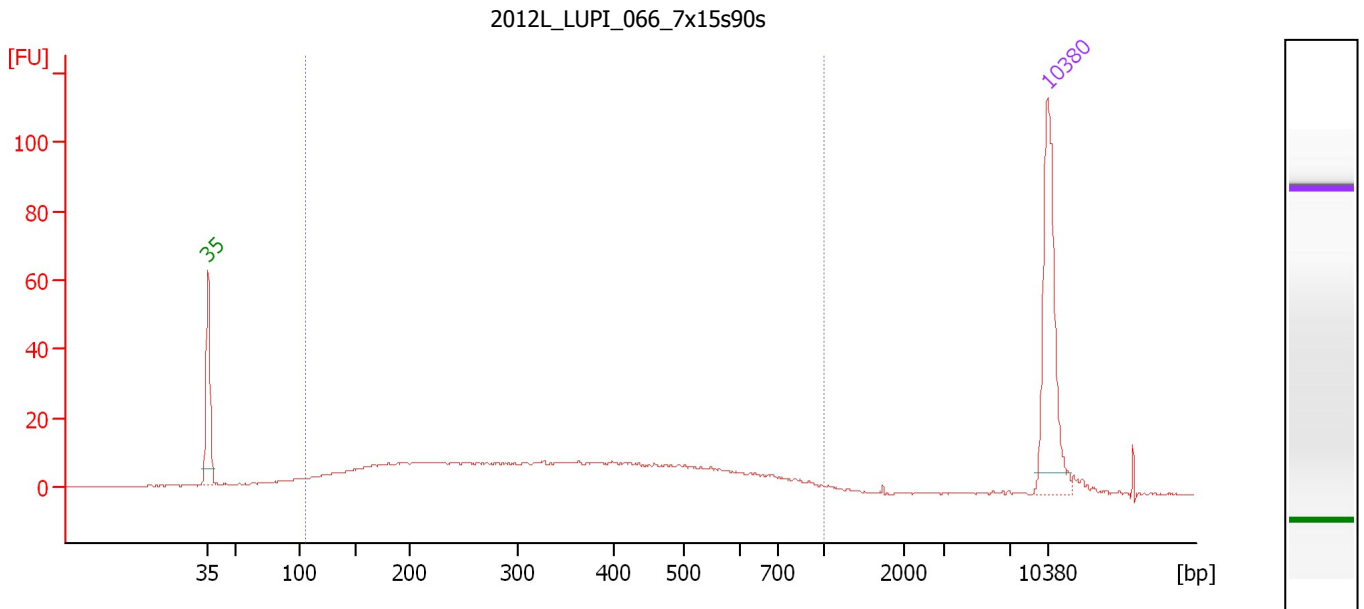
Region table for sample 1 : 2012L_LUPI_063_7x15s90s

From [bp]	To [bp]	Average Size [bp]	Molarity [pmol/l]	Conc. [pg/μl]	Corr. Area	% of Total	Size distribution in CV [%]	Color
91	956	363	2,267.8	378.09	323.4	86	46.2	Blue

Assay Class: High Sensitivity DNA Assay
 Data Path: C:\...ents and Settings\Bioanalyzer\2012-08-22\2012-08-22_003.xad

Created: 8/22/2012 2:23:53 PM
 Modified: 8/22/2012 3:07:18 PM

Electropherogram Summary Continued ...



Overall Results for sample 2 : 2012L LUPI 066 7x15s90s

Number of peaks found: 0 Corr. Area 1: 417.2
 Noise: 0.1

Peak table for sample 2 : 2012L LUPI 066 7x15s90s

Peak	Size [bp]	Conc. [pg/μl]	Molarity [pmol/l]	Observations
1	35	125.00	5,411.3	Lower Marker
2	10,380	75.00	10.9	Upper Marker

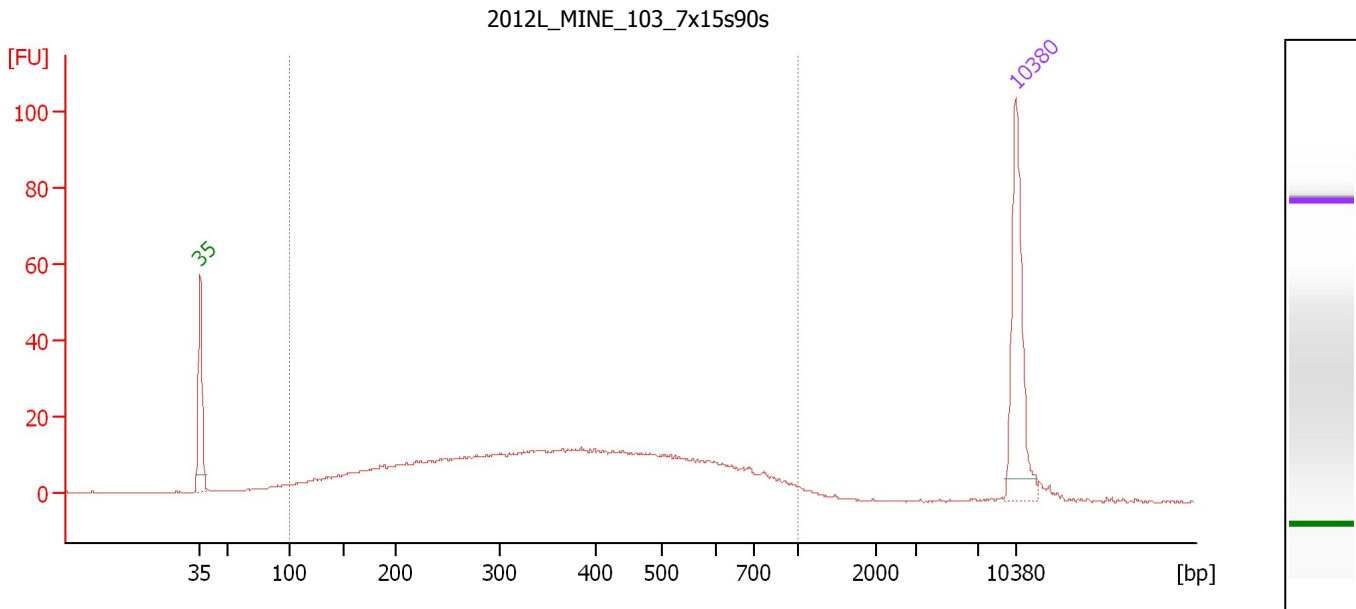
Region table for sample 2 : 2012L LUPI 066 7x15s90s

From [bp]	To [bp]	Average Size [bp]	Molarity [pmol/l]	Conc. [pg/μl]	Corr. Area	% of Total	Size distribution in CV [%]	Color
105	1,000	367	2,521.9	429.79	417.2	90	47.2	Blue

Assay Class: High Sensitivity DNA Assay
 Data Path: C:\...ents and Settings\Bioanalyzer\2012-08-22\2012-08-22_003.xad

Created: 8/22/2012 2:23:53 PM
 Modified: 8/22/2012 3:07:18 PM

Electropherogram Summary Continued ...



Overall Results for sample 3 : 2012L MINE 103 7x15s90s

Number of peaks found: 0 Corr. Area 1: 554.1
 Noise: 0.2

Peak table for sample 3 : 2012L MINE 103 7x15s90s

Peak	Size [bp]	Conc. [pg/μl]	Molarity [pmol/l]	Observations
1	35	125.00	5,411.3	Lower Marker
2	10,380	75.00	10.9	Upper Marker

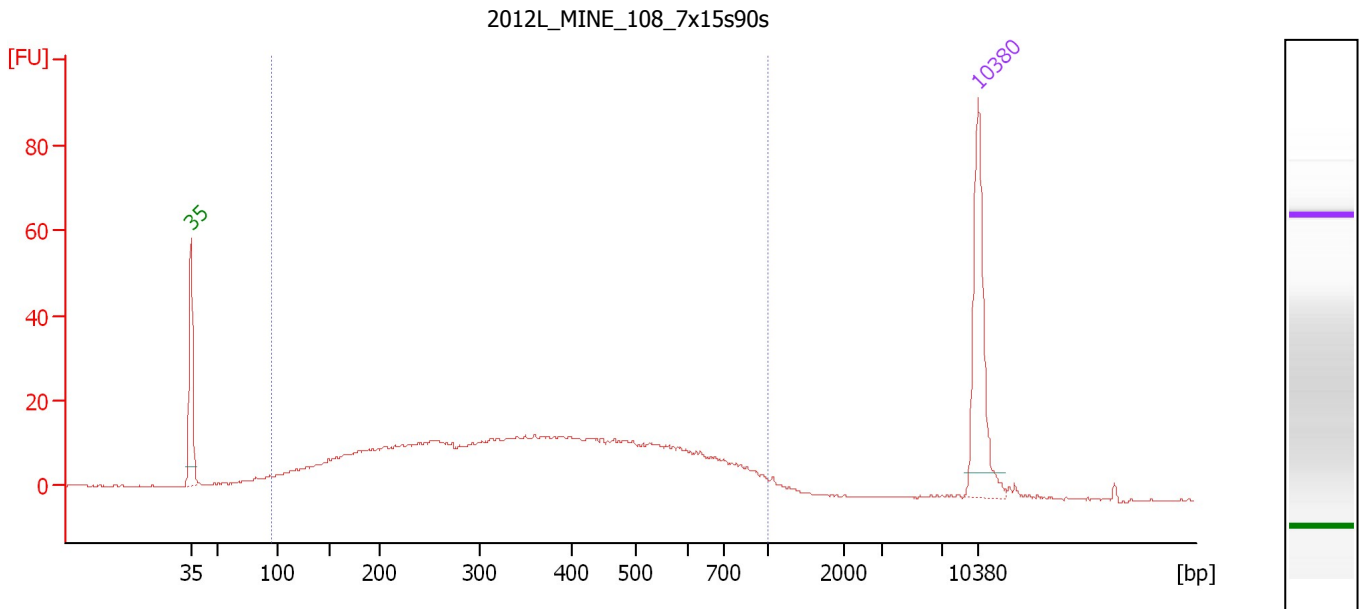
Region table for sample 3 : 2012L MINE 103 7x15s90s

From [bp]	To [bp]	Average Size [bp]	Molarity [pmol/l]	Conc. [pg/μl]	Corr. Area	% of Total	Size distribution in CV [%]	Color
100	1,000	392	3,576.8	662.60	554.1	94	44.5	Blue

Assay Class: High Sensitivity DNA Assay
 Data Path: C:\...ents and Settings\Bioanalyzer\2012-08-22\2012-08-22_003.xad

Created: 8/22/2012 2:23:53 PM
 Modified: 8/22/2012 3:07:18 PM

Electropherogram Summary Continued ...



Overall Results for sample 4 : 2012L MINE 108 7x15s90s

Number of peaks found: 0 Corr. Area 1: 601.7
 Noise: 0.2

Peak table for sample 4 : 2012L MINE 108 7x15s90s

Peak	Size [bp]	Conc. [pg/μl]	Molarity [pmol/l]	Observations
1	35	125.00	5,411.3	Lower Marker
2	10,380	75.00	10.9	Upper Marker

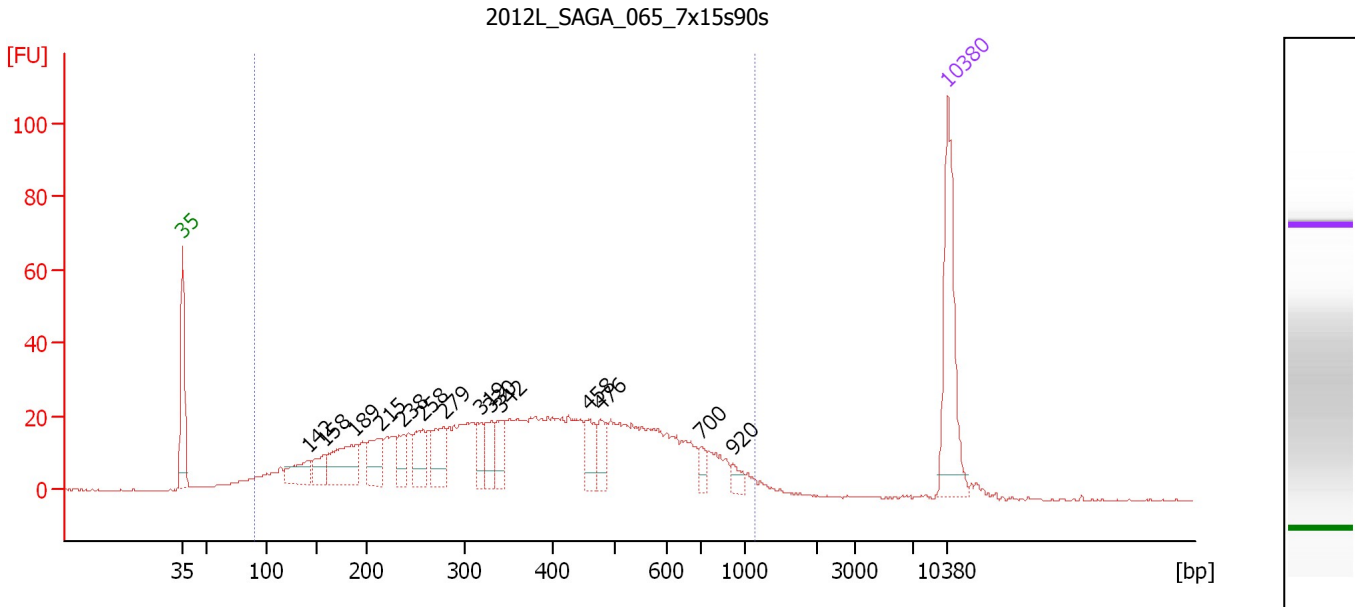
Region table for sample 4 : 2012L MINE 108 7x15s90s

From [bp]	To [bp]	Average Size [bp]	Molarity [pmol/l]	Conc. [pg/μl]	Corr. Area	% of Total	Size distribution in CV [%]	Color
96	1,000	385	4,458.2	793.68	601.7	96	46.1	Blue

Assay Class: High Sensitivity DNA Assay
 Data Path: C:\...ents and Settings\Bioanalyzer\2012-08-22\2012-08-22_003.xad

Created: 8/22/2012 2:23:53 PM
 Modified: 8/22/2012 3:07:18 PM

Electropherogram Summary Continued ...



Overall Results for sample 5 : 2012L SAGA 065 7x15s90s

Number of peaks found: 14 Corr. Area 1: 966.2
 Noise: 0.1

Peak table for sample 5 : 2012L SAGA 065 7x15s90s

Peak	Size [bp]	Conc. [pg/μl]	Molarity [pmol/l]	Observations
1	35	125.00	5,411.3	Lower Marker
2	142	32.38	345.2	
3	158	22.82	219.5	
4	189	59.92	479.8	
5	215	36.73	259.3	
6	238	20.63	131.6	
7	258	33.28	195.3	
8	279	37.41	202.9	
9	319	17.57	83.3	
10	330	25.46	116.9	
11	342	22.58	100.2	
12	458	24.97	82.7	
13	476	20.16	64.2	
14	700	8.73	18.9	
15	920	8.48	14.0	
16	10,380	75.00	10.9	Upper Marker

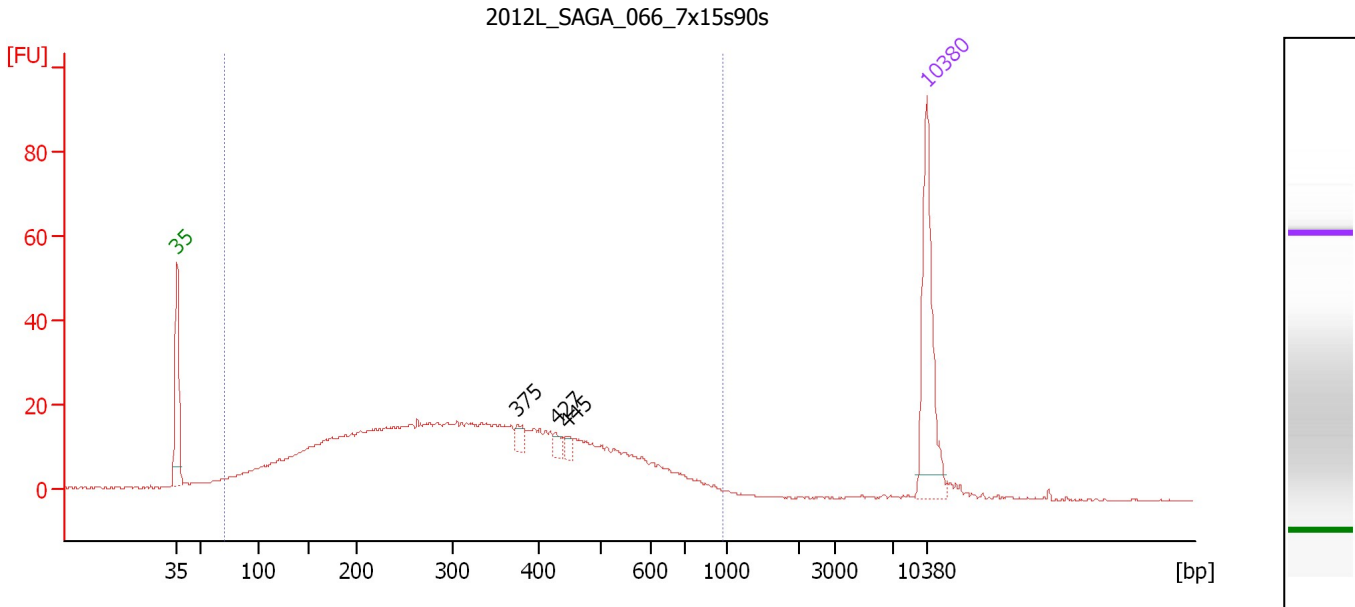
Region table for sample 5 : 2012L SAGA 065 7x15s90s

From [bp]	To [bp]	Average Size [bp]	Molarity [pmol/l]	Conc. [pg/μl]	Corr. Area	% of Total	Size distribution in CV [%]	Color
90	1,146	399	5,824.3	1,054.58	966.2	96	47.2	Blue

Assay Class: High Sensitivity DNA Assay
 Data Path: C:\...ents and Settings\Bioanalyzer\2012-08-22\2012-08-22_003.xad

Created: 8/22/2012 2:23:53 PM
 Modified: 8/22/2012 3:07:18 PM

Electropherogram Summary Continued ...



Overall Results for sample 6 : 2012L_SAGA_066_7x15s90s

Number of peaks found: 3 Corr. Area 1: 758.8
 Noise: 0.2

Peak table for sample 6 : 2012L_SAGA_066_7x15s90s

Peak	Size [bp]	Conc. [pg/μl]	Molarity [pmol/l]	Observations
1	35	125.00	5,411.3	Lower Marker
2	375	8.76	35.4	
3	427	7.40	26.3	
4	445	5.67	19.3	
5	10,380	75.00	10.9	Upper Marker

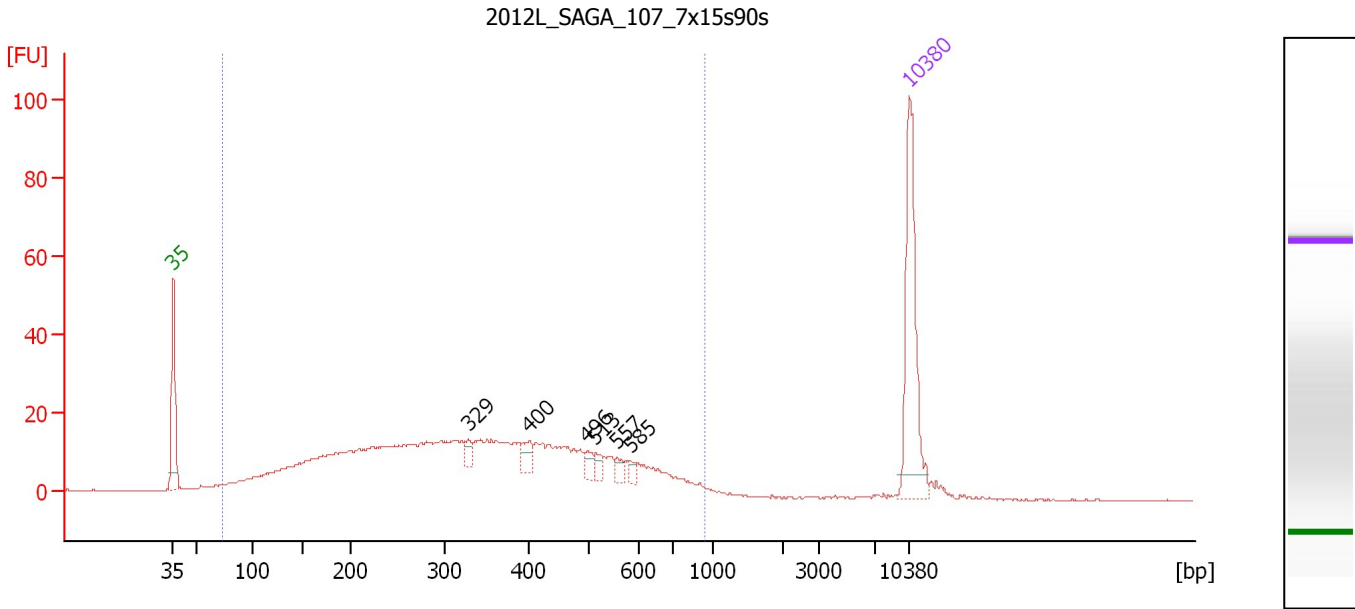
Region table for sample 6 : 2012L_SAGA_066_7x15s90s

From [bp]	To [bp]	Average Size [bp]	Molarity [pmol/l]	Conc. [pg/μl]	Corr. Area	% of Total	Size distribution in CV [%]	Color
70	967	335	6,689.3	1,026.80	758.8	97	45.4	Blue

Assay Class: High Sensitivity DNA Assay
 Data Path: C:\...ents and Settings\Bioanalyzer\2012-08-22\2012-08-22_003.xad

Created: 8/22/2012 2:23:53 PM
 Modified: 8/22/2012 3:07:18 PM

Electropherogram Summary Continued ...



Overall Results for sample 7 : 2012L SAGA 107 7x15s90s

Number of peaks found: 6 Corr. Area 1: 629.0
 Noise: 0.2

Peak table for sample 7 : 2012L SAGA 107 7x15s90s

Peak	Size [bp]	Conc. [pg/μl]	Molarity [pmol/l]	Observations
1	35	125.00	5,411.3	Lower Marker
2	329	6.96	32.1	
3	400	12.18	46.1	
4	496	8.41	25.7	
5	513	6.22	18.4	
6	557	6.66	18.1	
7	585	4.54	11.7	
8	10,380	75.00	10.9	Upper Marker

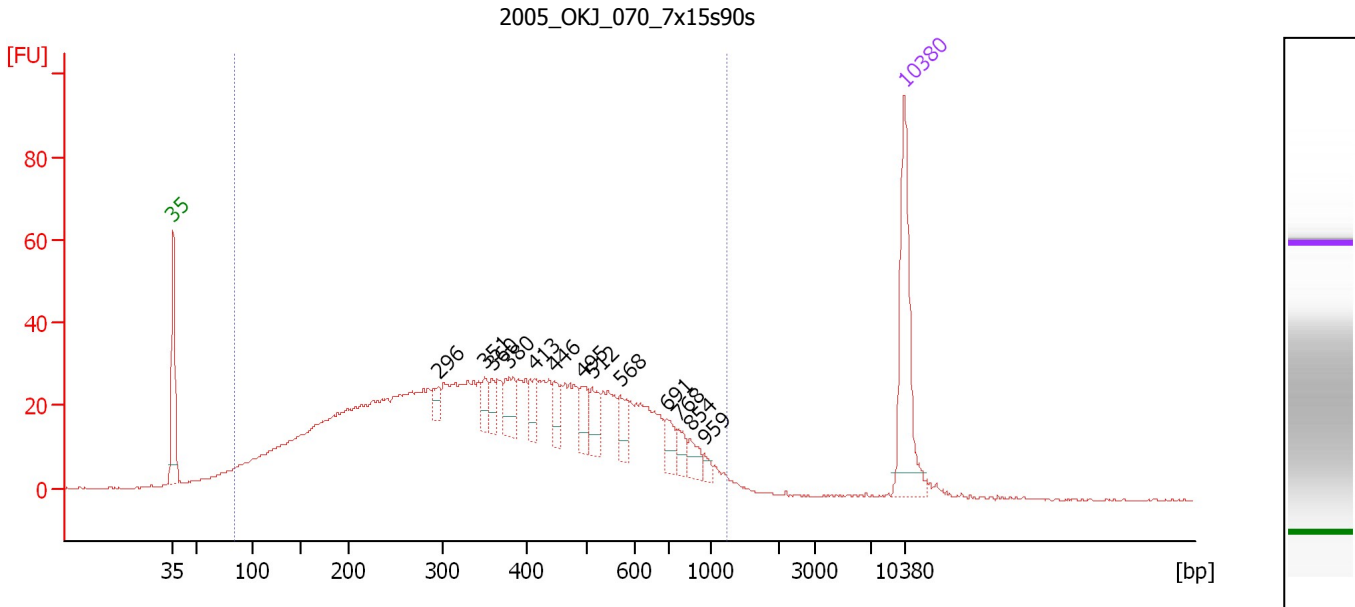
Region table for sample 7 : 2012L SAGA 107 7x15s90s

From [bp]	To [bp]	Average Size [bp]	Molarity [pmol/l]	Conc. [pg/μl]	Corr. Area	% of Total	Size distribution in CV [%]	Color
73	936	353	4,704.7	760.62	629.0	97	45.0	Blue

Assay Class: High Sensitivity DNA Assay
 Data Path: C:\...ents and Settings\Bioanalyzer\2012-08-22\2012-08-22_003.xad

Created: 8/22/2012 2:23:53 PM
 Modified: 8/22/2012 3:07:18 PM

Electropherogram Summary Continued ...



Overall Results for sample 8 : 2005 OKJ 070 7x15s90s

Number of peaks found: 13 Corr. Area 1: 1,318.2
 Noise: 0.2

Peak table for sample 8 : 2005 OKJ 070 7x15s90s

Peak	Size [bp]	Conc. [pg/μl]	Molarity [pmol/l]	Observations
1	35	125.00	5,411.3	Lower Marker
2	296	11.93	61.1	
3	351	14.44	62.4	
4	360	13.56	57.1	
5	380	27.37	109.2	
6	413	19.03	69.8	
7	446	16.88	57.3	
8	495	20.09	61.5	
9	512	21.42	63.4	
10	568	19.32	51.5	
11	691	14.60	32.0	
12	768	11.36	22.4	
13	854	12.27	21.8	
14	959	5.51	8.7	
15	10,380	75.00	10.9	Upper Marker

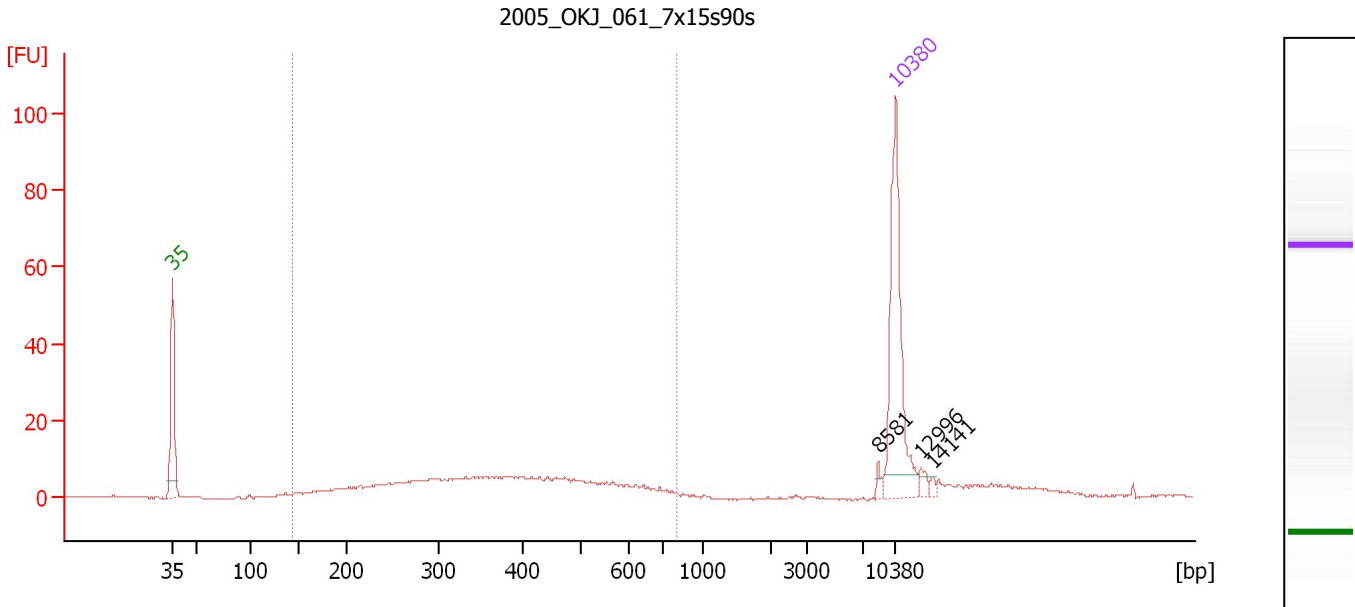
Region table for sample 8 : 2005 OKJ 070 7x15s90s

From [bp]	To [bp]	Average Size [bp]	Molarity [pmol/l]	Conc. [pg/μl]	Corr. Area	% of Total	Size distribution in CV [%]	Color
84	1,232	394	9,536.2	1,662.12	1,318.2	96	49.3	Blue

Assay Class: High Sensitivity DNA Assay
 Data Path: C:\...ents and Settings\Bioanalyzer\2012-08-22\2012-08-22_003.xad

Created: 8/22/2012 2:23:53 PM
 Modified: 8/22/2012 3:07:18 PM

Electropherogram Summary Continued ...



Overall Results for sample 9 : 2005 OKJ 061 7x15s90s

Number of peaks found: 3 Corr. Area 1: 171.1
 Noise: 0.2

Peak table for sample 9 : 2005 OKJ 061 7x15s90s

Peak	Size [bp]	Conc. [pg/μl]	Molarity [pmol/l]	Observations
1	35	125.00	5,411.3	Lower Marker
2	8,581	3.10	0.5	
3	10,380	75.00	10.9	Upper Marker
4	12,996	0.00	0.0	
5	14,141	0.00	0.0	

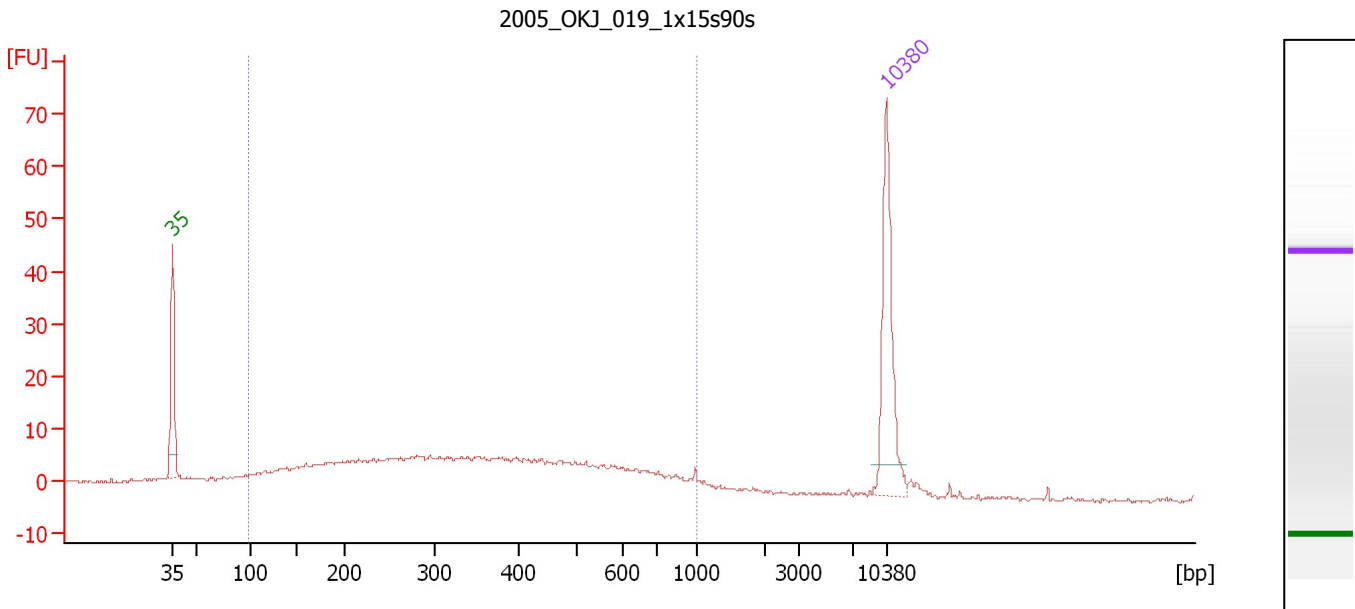
Region table for sample 9 : 2005 OKJ 061 7x15s90s

From [bp]	To [bp]	Average Size [bp]	Molarity [pmol/l]	Conc. [pg/μl]	Corr. Area	% of Total	Size distribution in CV [%]	Color
143	802	385	871.3	184.14	171.1	81	33.8	Blue

Assay Class: High Sensitivity DNA Assay
 Data Path: C:\...ents and Settings\Bioanalyzer\2012-08-22\2012-08-22_003.xad

Created: 8/22/2012 2:23:53 PM
 Modified: 8/22/2012 3:07:18 PM

Electropherogram Summary Continued ...



Overall Results for sample 10 : 2005 OKJ 019 1x15s90s

Number of peaks found: 0 Corr. Area 1: 279.5
 Noise: 0.3

Peak table for sample 10 : 2005 OKJ 019 1x15s90s

Peak	Size [bp]	Conc. [pg/μl]	Molarity [pmol/l]	Observations
1	35	125.00	5,411.3	Lower Marker
2	10,380	75.00	10.9	Upper Marker

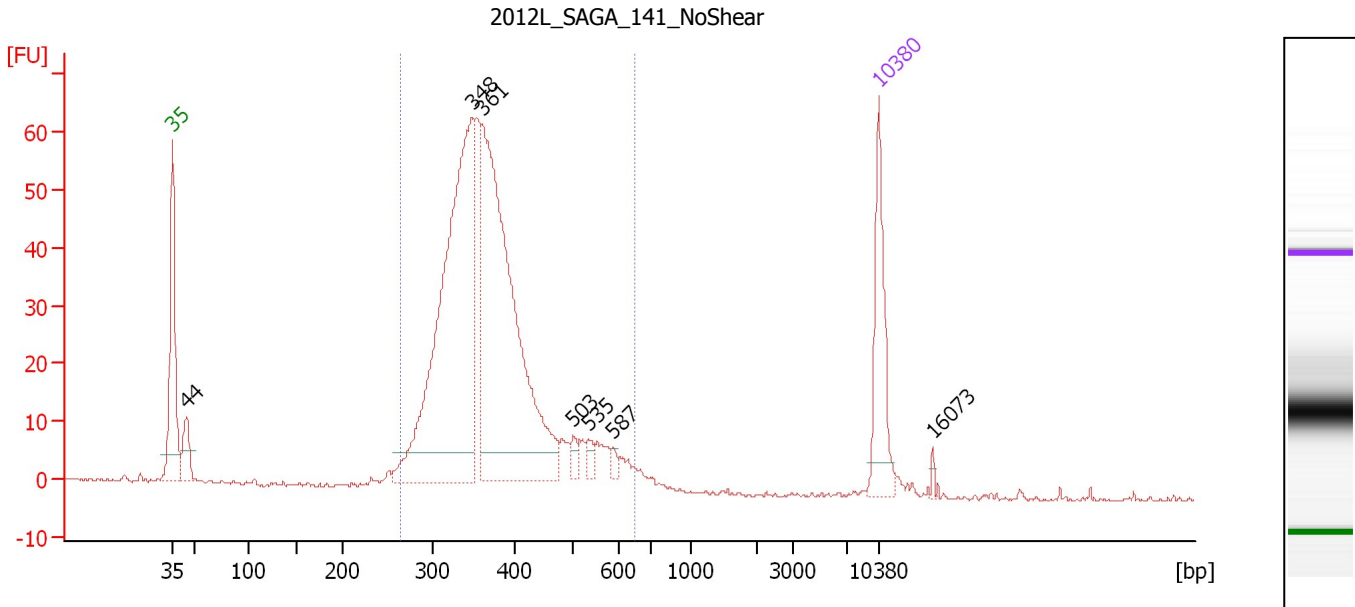
Region table for sample 10 : 2005 OKJ 019 1x15s90s

From [bp]	To [bp]	Average Size [bp]	Molarity [pmol/l]	Conc. [pg/μl]	Corr. Area	% of Total	Size distribution in CV [%]	Color
99	1,000	379	2,724.3	472.33	279.5	88	48.1	Blue

Assay Class: High Sensitivity DNA Assay
 Data Path: C:\...ents and Settings\Bioanalyzer\2012-08-22\2012-08-22_003.xad

Created: 8/22/2012 2:23:53 PM
 Modified: 8/22/2012 3:07:18 PM

Electropherogram Summary Continued ...



Overall Results for sample 11 : 2012L_SAGA_141_NoShear

Number of peaks found: 7 Corr. Area 1: 736.2
 Noise: 0.3

Peak table for sample 11 : 2012L_SAGA_141_NoShear

Peak	Size [bp]	Conc. [pg/μl]	Molarity [pmol/l]	Observations
1	35	125.00	5,411.3	Lower Marker
2	44	45.20	1,550.5	
3	348	548.08	2,385.1	
4	361	522.11	2,194.2	
5	503	10.20	30.8	
6	535	10.50	29.7	
7	587	6.32	16.3	
8	10,380	75.00	10.9	Upper Marker
9	16,073	0.00	0.0	

Region table for sample 11 : 2012L_SAGA_141_NoShear

From [bp]	To [bp]	Average Size [bp]	Molarity [pmol/l]	Conc. [pg/μl]	Corr. Area	% of Total	Size distribution in CV [%]	Color
266	649	377	5,427.7	1,301.74	736.2	94	18.4	Blue

Assay Class: High Sensitivity DNA Assay
Data Path: C:\...ents and Settings\Bioanalyzer\2012-08-22\2012-08-22_003.xad

Created: 8/22/2012 2:23:53 PM
Modified: 8/22/2012 3:07:18 PM

Gel Image

