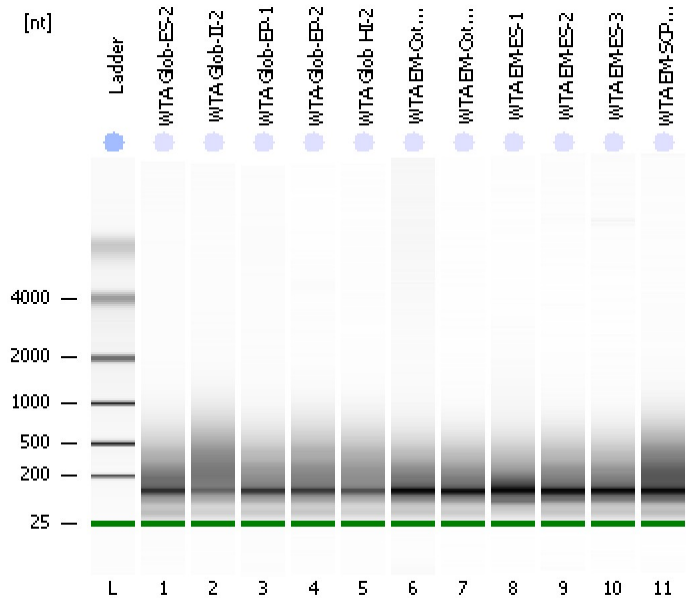


Assay Class: Eukaryote Total RNA Pico
Data Path: C:\...ents and Settings\Bioanalyzer\2012-08-23\2012-08-23_002.xad

Created: 8/23/2012 1:26:15 PM
Modified: 8/23/2012 1:49:19 PM

Electrophoresis File Run Summary



Instrument Information:

Instrument Name: DE13701086 Firmware: C.01.069
Serial#: DE13701086 Type: G2938B

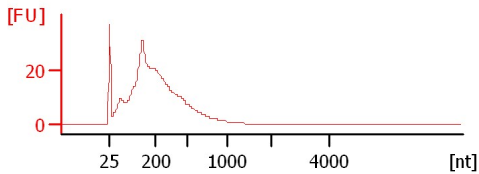
Assay Information:

Assay Origin Path: C:\Program Files\Agilent\2100 bioanalyzer\2100 expert\assays\RNA\Eukaryote Total RNA Pico Series II.xsy
Assay Class: Eukaryote Total RNA Pico
Version: 2.6
Assay Comments: Total RNA Analysis pg sensitivity (Eukaryote)
© Copyright 2003 - 2009 Agilent Technologies, Inc.

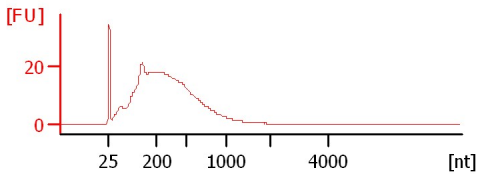
Chip Information:

Chip Lot #:
Reagent Kit Lot #:
Chip Comments:

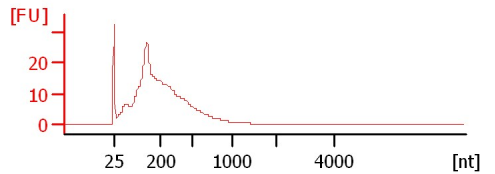
WTA Glob-ES-2
RIN: 2.40



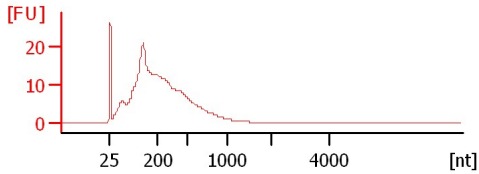
WTA Glob-II-2
RIN: 2.30



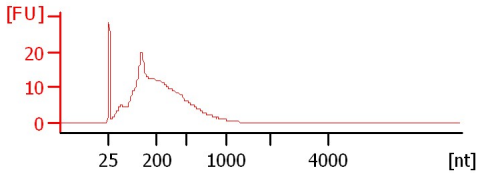
WTA Glob-EP-1
RIN: 2.40



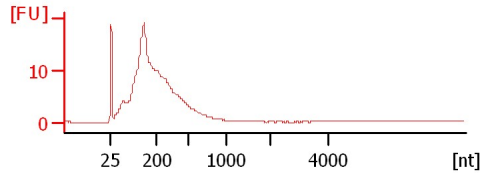
WTA-Glob-EP-2
RIN: 1.20



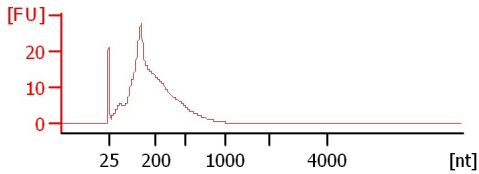
WTA Glob HI-2
RIN: 2.30



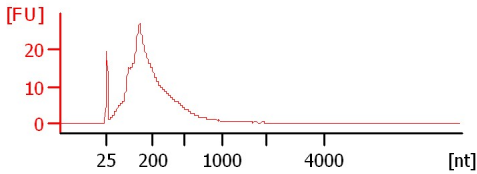
WTA EM-Cot-ADEPD-2
RIN: 2.40



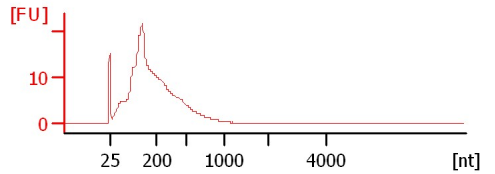
WTA EM-Cot-ADEPD-3
RIN: 2.30



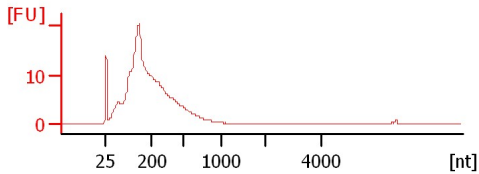
WTA EM-ES-1
RIN: 2.40



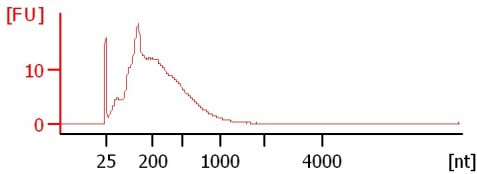
WTA EM-ES-2
RIN: 2.30



WTA EM-ES-3
RIN: 2.30



WTA EM-SCPY-1
RIN: 2.20



Assay Class: Eukaryote Total RNA Pico
 Data Path: C:\...ents and Settings\Bioanalyzer\2012-08-23\2012-08-23_002.xad

Created: 8/23/2012 1:26:15 PM
 Modified: 8/23/2012 1:49:19 PM

Electrophoresis File Run Summary (Chip Summary)

Sample Name	Sample Comment	Status	Result Label	Result Color
WTA Glob-ES-2		✓	RIN: 2.40	
WTA Glob-II-2		✓	RIN: 2.30	
WTA Glob-EP-1		✓	RIN: 2.40	
WTA-Glob-EP-2		✓	RIN: 1.20	
WTA Glob HI-2		✓	RIN: 2.30	
WTA EM-Cot-ADEPD-2		✓	RIN: 2.40	
WTA EM-Cot-ADEPD-3		✓	RIN: 2.30	
WTA EM-ES-1		✓	RIN: 2.40	
WTA EM-ES-2		✓	RIN: 2.30	
WTA EM-ES-3		✓	RIN: 2.30	
WTA EM-SCPY-1		✓	RIN: 2.20	
Ladder		✓	All Other Samples	

Chip Lot #

Reagent Kit Lot #

Chip Comments :

Assay Class: Eukaryote Total RNA Pico
Data Path: C:\...ents and Settings\Bioanalyzer\2012-08-23\2012-08-23_002.xad

Created: 8/23/2012 1:26:15 PM
Modified: 8/23/2012 1:49:19 PM

Electrophoresis Assay Details

General Analysis Settings

Number of Available Sample and Ladder Wells (Max.) : 12
Minimum Visible Range [s] : 17
Maximum Visible Range [s] : 70
Start Analysis Time Range [s] : 18
End Analysis Time Range [s] : 69
Ladder Concentration [pg/μl] : 1000
Lower Marker Concentration [pg/μl] : 0
Upper Marker Concentration [pg/μl] : 0
Used Lower Marker for Quantitation
Standard Curve Fit is Logarithmic
Show Data Aligned to Lower Marker

Integrator Settings

Integration Start Time [s] : 18
Integration End Time [s] : 69
Slope Threshold : 0.6
Height Threshold [FU] : 0.5
Area Threshold : 0.2
Width Threshold [s] : 0.3
Baseline Plateau [s] : 6

Filter Settings

Filter Width [s] : 0.5
Polynomial Order : 4

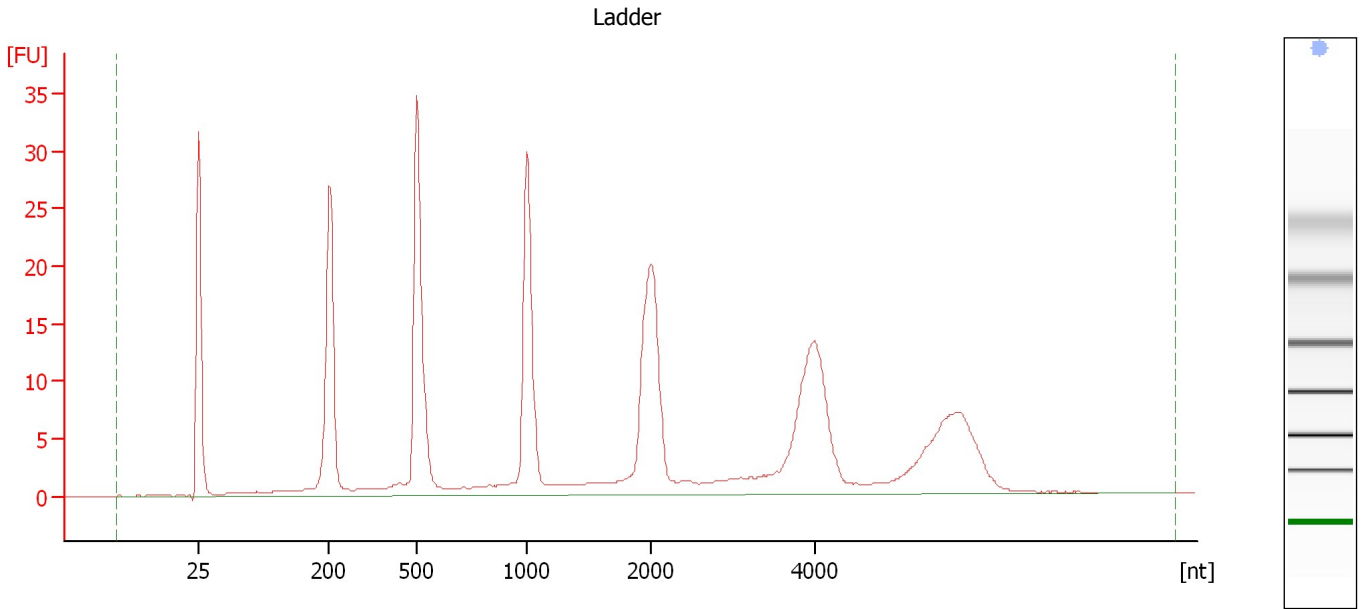
Ladder

Ladder Peak	Size
1	25
2	200
3	500
4	1000
5	2000
6	4000

Assay Class: Eukaryote Total RNA Pico
Data Path: C:\...ents and Settings\Bioanalyzer\2012-08-23\2012-08-23_002.xad

Created: 8/23/2012 1:26:15 PM
Modified: 8/23/2012 1:49:19 PM

Electropherogram Summary



Overall Results for Ladder

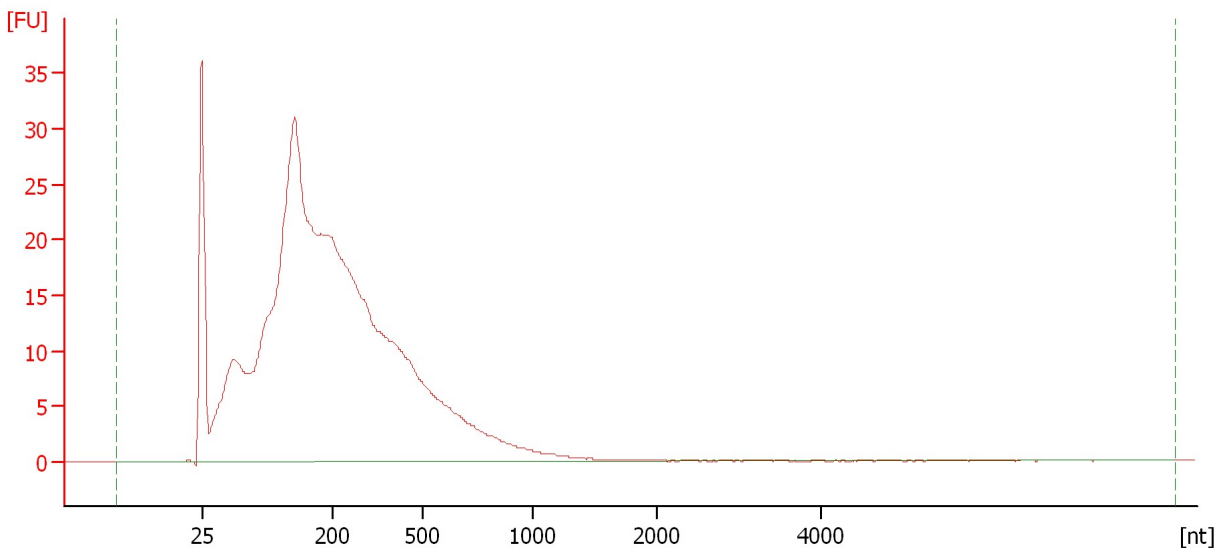
RNA Area:	286.5	Result Flagging Color:	
RNA Concentration:	1,000 pg/μl	Result Flagging Label:	All Other Samples

Assay Class: Eukaryote Total RNA Pico
Data Path: C:\...ents and Settings\Bioanalyzer\2012-08-23\2012-08-23_002.xad

Created: 8/23/2012 1:26:15 PM
Modified: 8/23/2012 1:49:19 PM

Electropherogram Summary Continued ...

WTA Glob-ES-2



Overall Results for sample 1 : WTA Glob-ES-2

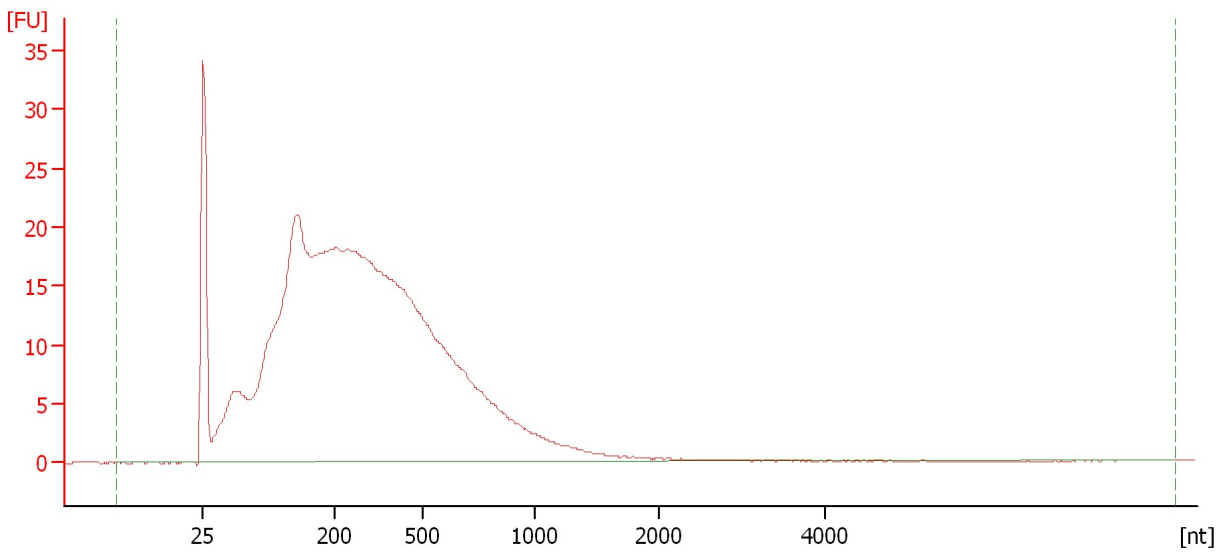
RNA Area:	541.9	RNA Integrity Number (RIN):	2.4 (B.02.08)
RNA Concentration:	1,891 pg/μl	Result Flagging Color:	
rRNA Ratio [28s / 18s]:	0.0	Result Flagging Label:	RIN: 2.40

Assay Class: Eukaryote Total RNA Pico
Data Path: C:\...ents and Settings\Bioanalyzer\2012-08-23\2012-08-23_002.xad

Created: 8/23/2012 1:26:15 PM
Modified: 8/23/2012 1:49:19 PM

Electropherogram Summary Continued ...

WTA Glob-II-2



Overall Results for sample 2 : WTA Glob-II-2

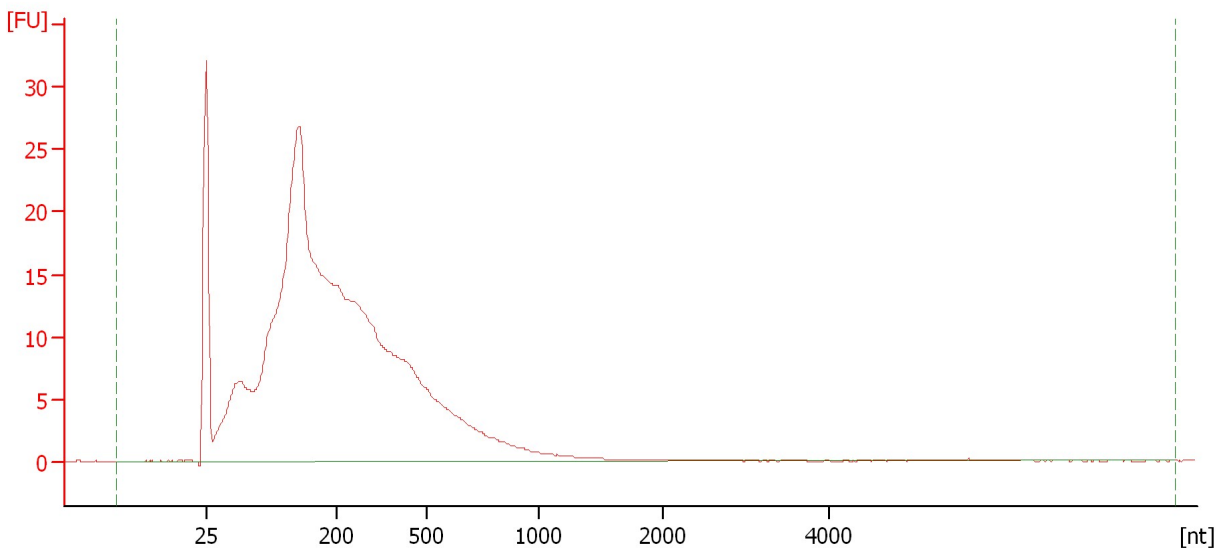
RNA Area:	558.6	RNA Integrity Number (RIN):	2.3 (B.02.08)
RNA Concentration:	1,950 pg/μl	Result Flagging Color:	
rRNA Ratio [28s / 18s]:	0.0	Result Flagging Label:	RIN: 2.30

Assay Class: Eukaryote Total RNA Pico
Data Path: C:\...ents and Settings\Bioanalyzer\2012-08-23\2012-08-23_002.xad

Created: 8/23/2012 1:26:15 PM
Modified: 8/23/2012 1:49:19 PM

Electropherogram Summary Continued ...

WTA Glob-EP-1



Overall Results for sample 3 : WTA Glob-EP-1

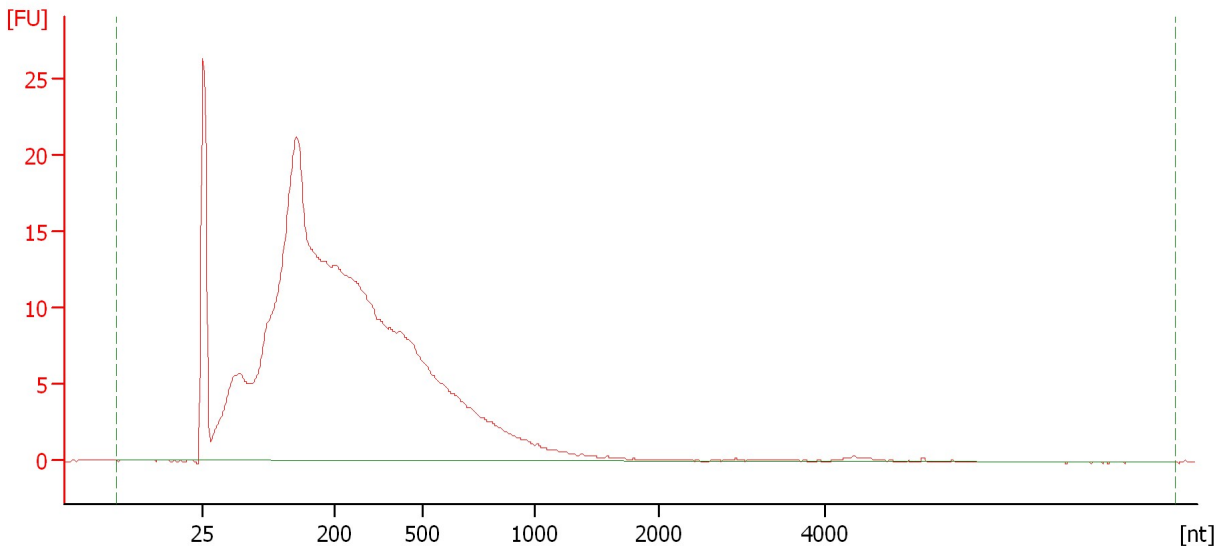
RNA Area:	421.7	RNA Integrity Number (RIN):	2.4 (B.02.08)
RNA Concentration:	1,472 pg/μl	Result Flagging Color:	
rRNA Ratio [28s / 18s]:	0.0	Result Flagging Label:	RIN: 2.40

Assay Class: Eukaryote Total RNA Pico
Data Path: C:\...ents and Settings\Bioanalyzer\2012-08-23\2012-08-23_002.xad

Created: 8/23/2012 1:26:15 PM
Modified: 8/23/2012 1:49:19 PM

Electropherogram Summary Continued ...

WTA-Glob-EP-2



Overall Results for sample 4 : WTA-Glob-EP-2

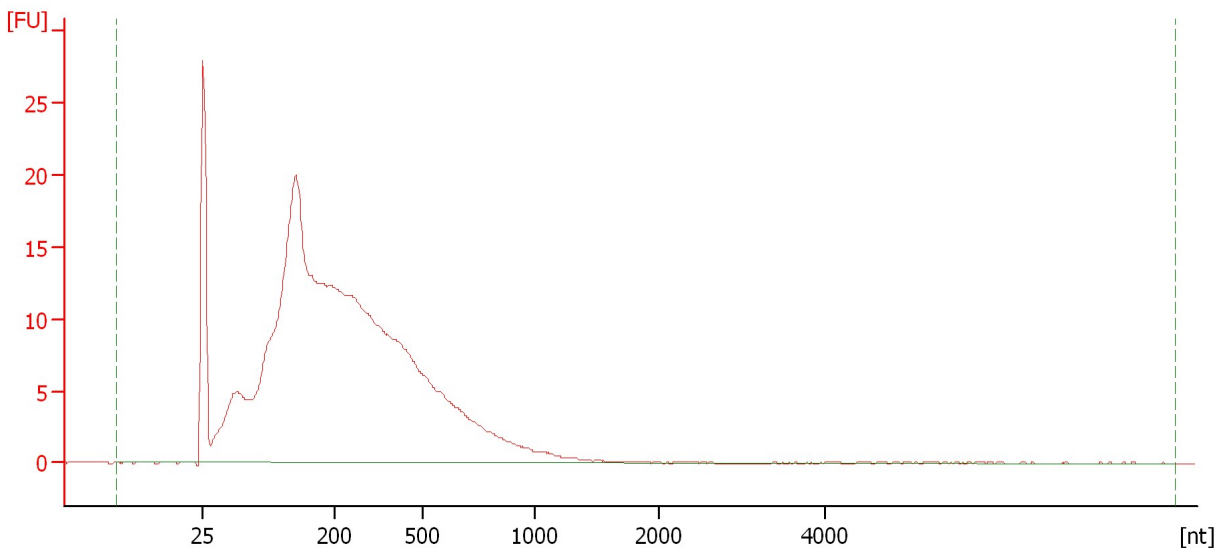
RNA Area:	393.1	RNA Integrity Number (RIN):	1.2 (B.02.08)
RNA Concentration:	1,372 pg/μl	Result Flagging Color:	
rRNA Ratio [28s / 18s]:	0.0	Result Flagging Label:	RIN: 1.20

Assay Class: Eukaryote Total RNA Pico
Data Path: C:\...ents and Settings\Bioanalyzer\2012-08-23\2012-08-23_002.xad

Created: 8/23/2012 1:26:15 PM
Modified: 8/23/2012 1:49:19 PM

Electropherogram Summary Continued ...

WTA Glob HI-2



Overall Results for sample 5 : WTA Glob HI-2

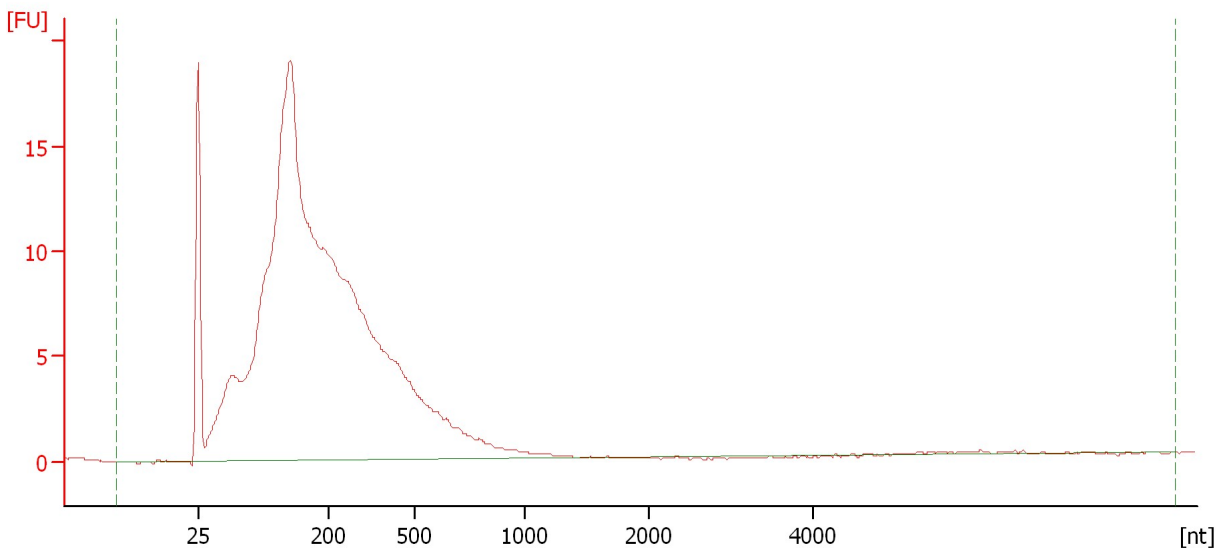
RNA Area:	365.7	RNA Integrity Number (RIN):	2.3 (B.02.08)
RNA Concentration:	1,277 pg/μl	Result Flagging Color:	
rRNA Ratio [28s / 18s]:	0.0	Result Flagging Label:	RIN: 2.30

Assay Class: Eukaryote Total RNA Pico
Data Path: C:\...ents and Settings\Bioanalyzer\2012-08-23\2012-08-23_002.xad

Created: 8/23/2012 1:26:15 PM
Modified: 8/23/2012 1:49:19 PM

Electropherogram Summary Continued ...

WTA EM-Cot-ADEPD-2



Overall Results for sample 6 : WTA EM-Cot-ADEPD-2

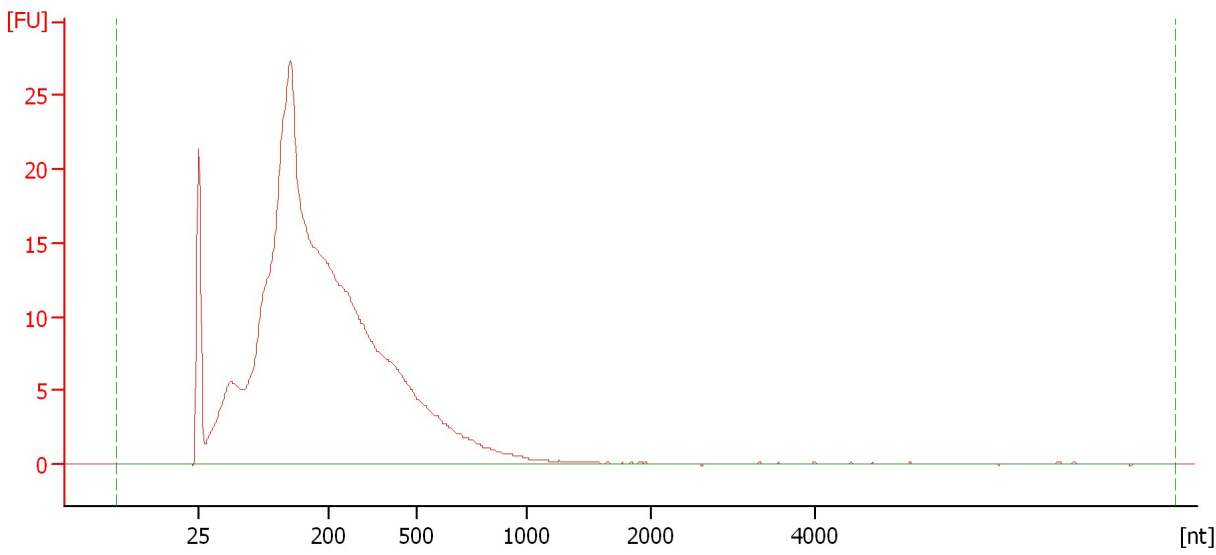
RNA Area:	280.4	RNA Integrity Number (RIN):	2.4 (B.02.08)
RNA Concentration:	979 pg/μl	Result Flagging Color:	
rRNA Ratio [28s / 18s]:	0.0	Result Flagging Label:	RIN: 2.40

Assay Class: Eukaryote Total RNA Pico
Data Path: C:\...ents and Settings\Bioanalyzer\2012-08-23\2012-08-23_002.xad

Created: 8/23/2012 1:26:15 PM
Modified: 8/23/2012 1:49:19 PM

Electropherogram Summary Continued ...

WTA EM-Cot-ADEPD-3



Overall Results for sample 7 : WTA EM-Cot-ADEPD-3

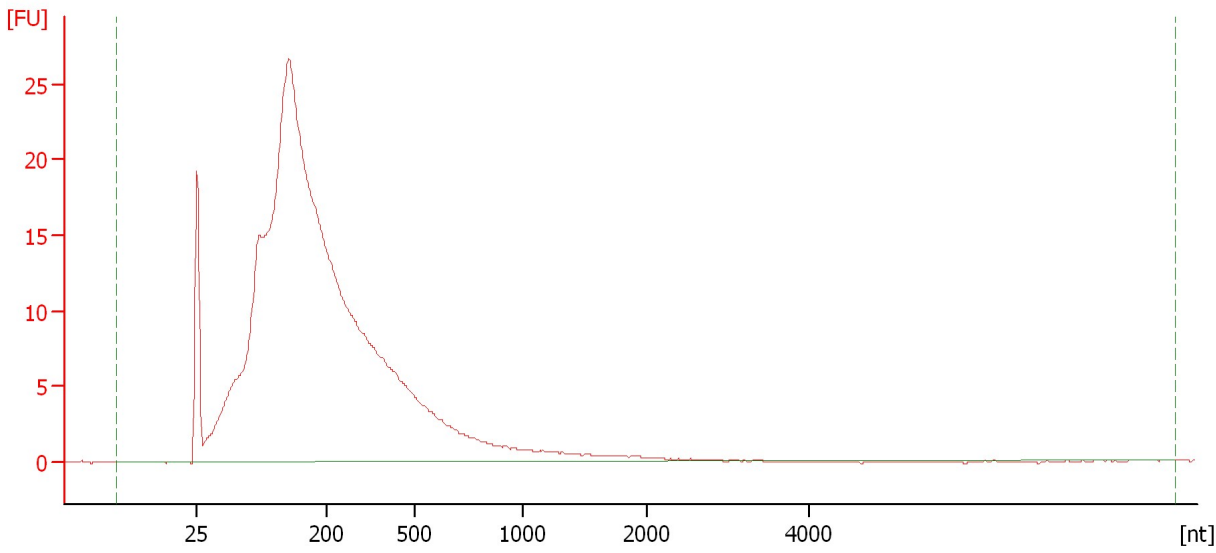
RNA Area:	393.3	RNA Integrity Number (RIN):	2.3 (B.02.08)
RNA Concentration:	1,373 pg/μl	Result Flagging Color:	
rRNA Ratio [28s / 18s]:	0.0	Result Flagging Label:	RIN: 2.30

Assay Class: Eukaryote Total RNA Pico
Data Path: C:\...ents and Settings\Bioanalyzer\2012-08-23\2012-08-23_002.xad

Created: 8/23/2012 1:26:15 PM
Modified: 8/23/2012 1:49:19 PM

Electropherogram Summary Continued ...

WTA EM-ES-1



Overall Results for sample 8 : WTA EM-ES-1

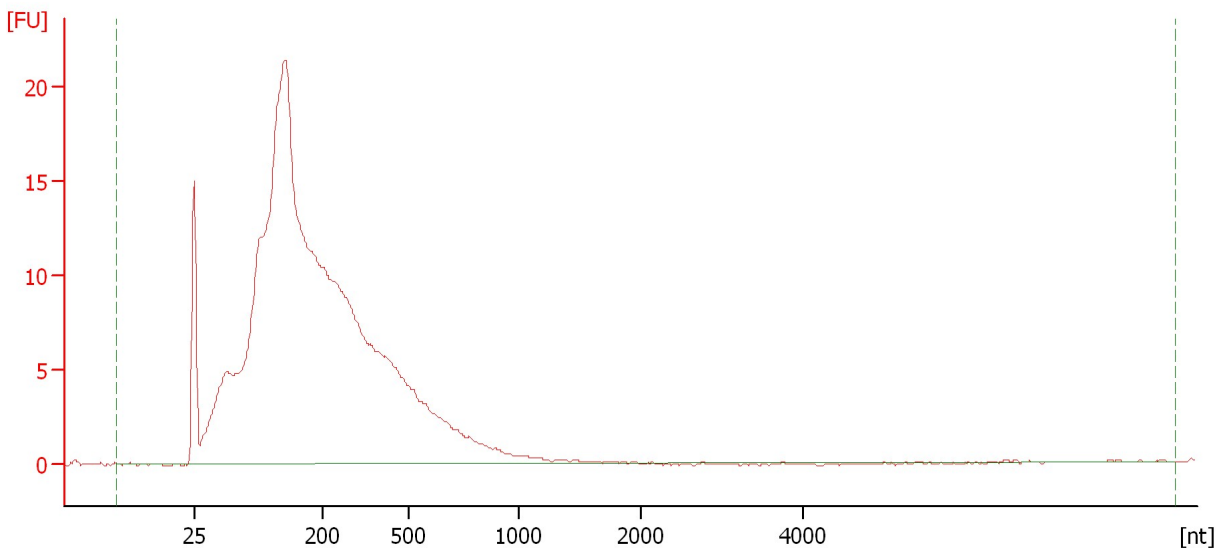
RNA Area:	415.2	RNA Integrity Number (RIN):	2.4 (B.02.08)
RNA Concentration:	1,449 pg/μl	Result Flagging Color:	
rRNA Ratio [28s / 18s]:	0.0	Result Flagging Label:	RIN: 2.40

Assay Class: Eukaryote Total RNA Pico
Data Path: C:\...ents and Settings\Bioanalyzer\2012-08-23\2012-08-23_002.xad

Created: 8/23/2012 1:26:15 PM
Modified: 8/23/2012 1:49:19 PM

Electropherogram Summary Continued ...

WTA EM-ES-2



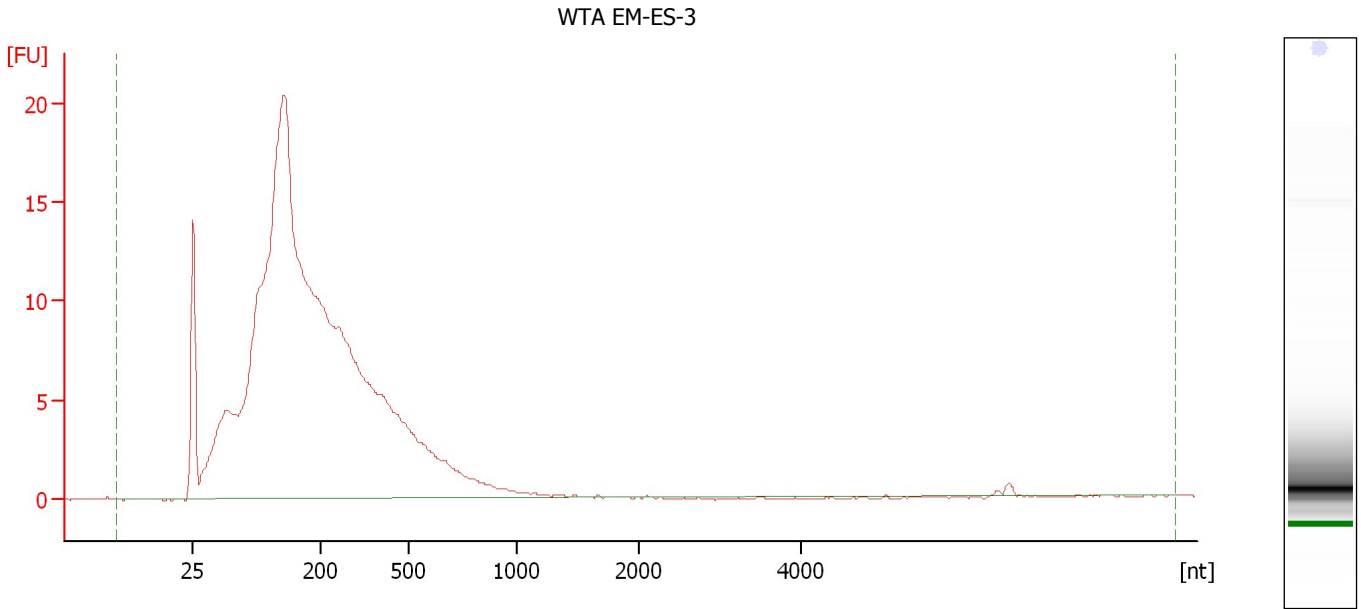
Overall Results for sample 9 : WTA EM-ES-2

RNA Area:	326.2	RNA Integrity Number (RIN):	2.3 (B.02.08)
RNA Concentration:	1,139 pg/μl	Result Flagging Color:	
rRNA Ratio [28s / 18s]:	0.0	Result Flagging Label:	RIN: 2.30

Assay Class: Eukaryote Total RNA Pico
Data Path: C:\...ents and Settings\Bioanalyzer\2012-08-23\2012-08-23_002.xad

Created: 8/23/2012 1:26:15 PM
Modified: 8/23/2012 1:49:19 PM

Electropherogram Summary Continued ...



Overall Results for sample 10 : WTA EM-ES-3

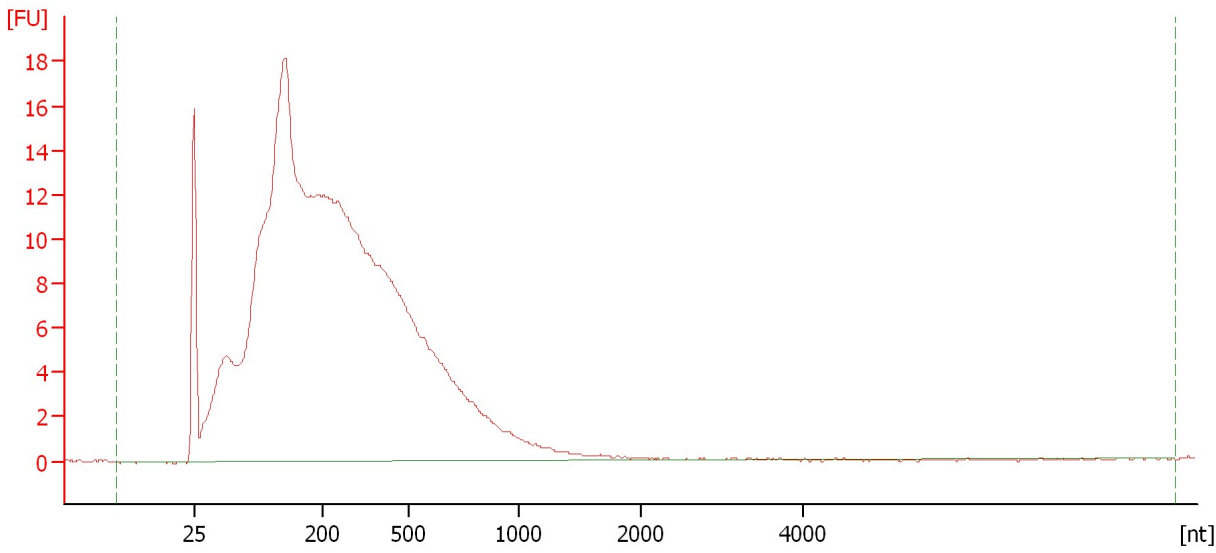
RNA Area:	298.6	RNA Integrity Number (RIN):	2.3 (B.02.08)
RNA Concentration:	1,042 pg/μl	Result Flagging Color:	
rRNA Ratio [28s / 18s]:	0.0	Result Flagging Label:	RIN: 2.30

Assay Class: Eukaryote Total RNA Pico
Data Path: C:\...ents and Settings\Bioanalyzer\2012-08-23\2012-08-23_002.xad

Created: 8/23/2012 1:26:15 PM
Modified: 8/23/2012 1:49:19 PM

Electropherogram Summary Continued ...

WTA EM-SCPY-1



Overall Results for sample 11 : WTA EM-SCPY-1

RNA Area:	371.7	RNA Integrity Number (RIN):	2.2 (B.02.08)
RNA Concentration:	1,298 pg/μl	Result Flagging Color:	
rRNA Ratio [28s / 18s]:	0.0	Result Flagging Label:	RIN: 2.20

Assay Class: Eukaryote Total RNA Pico
Data Path: C:\...ents and Settings\Bioanalyzer\2012-08-23\2012-08-23_002.xad

Created: 8/23/2012 1:26:15 PM
Modified: 8/23/2012 1:49:19 PM

Gel Image

