

Assay Class: DNA 12000
Data Path: C:\...ents and Settings\Bioanalyzer\2012-08-24\2012-08-24_001.xad

Created: 8/24/2012 11:04:33 AM
Modified: 8/24/2012 11:31:38 AM

Electrophoresis File Run Summary

Instrument Information:

Instrument Name: DE13701086 Firmware: C.01.069
Serial#: DE13701086 Type: G2938B

Assay Information:

Assay Origin Path: C:\Program Files\Agilent\2100 bioanalyzer\2100 expert\assays\dsDNA\DNA 12000 Series II.xsy

Assay Class: DNA 12000

Version: 2.4

Assay Comments: DNA Analysis 100 -12000 bp

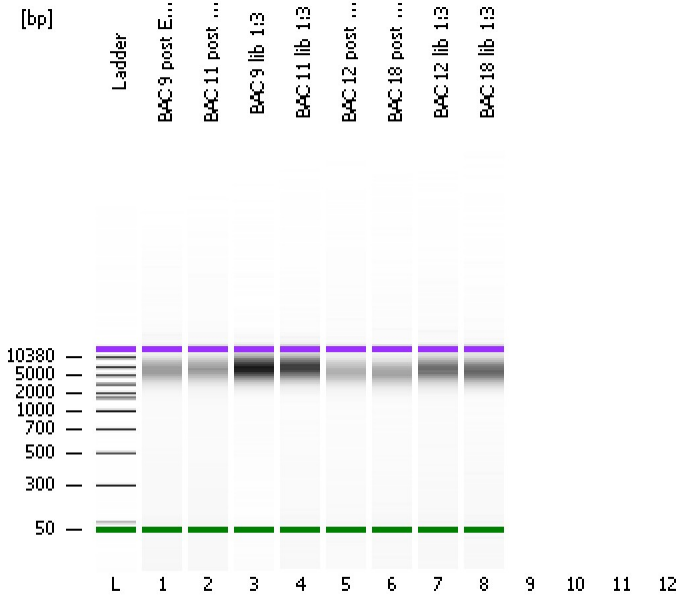
© Copyright 2003-2009 Agilent Technologies, Inc.

Chip Information:

Chip Lot #:

Reagent Kit Lot #:

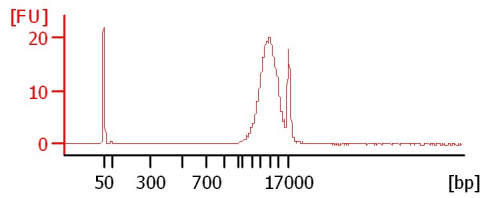
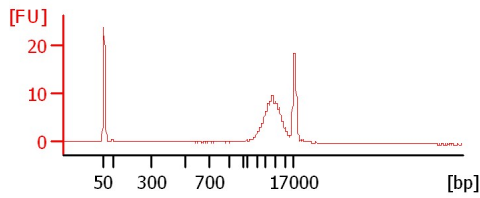
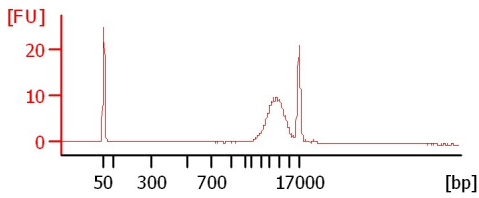
Chip Comments:



BAC 9 post ER 1:5

BAC 11 post ER 1:5

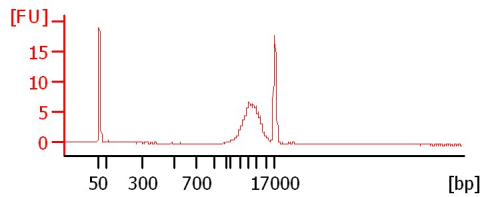
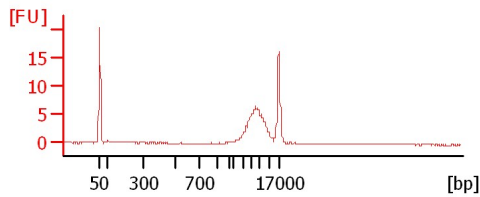
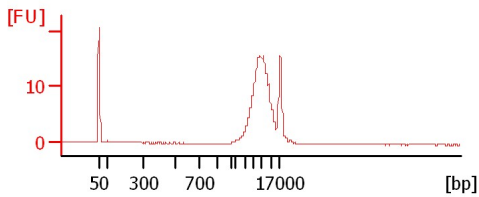
BAC 9 lib 1:3



BAC 11 lib 1:3

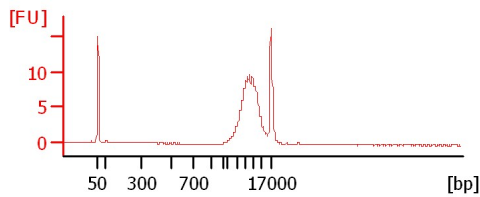
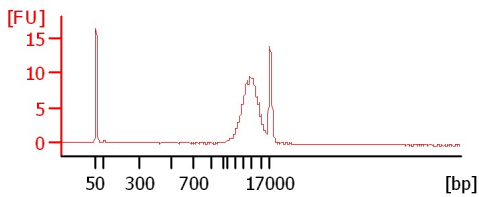
BAC 12 post ER 1:5

BAC 18 post ER 1:5



BAC 12 lib 1:3

BAC 18 lib 1:3



Assay Class: DNA 12000
Data Path: C:\...ents and Settings\Bioanalyzer\2012-08-24\2012-08-24_001.xad

Created: 8/24/2012 11:04:33 AM
Modified: 8/24/2012 11:31:38 AM

Electrophoresis File Run Summary (Chip Summary)

Sample Name	Sample Comment	Rest. Digest	Status	Observation	Result Label	Result Color
BAC 9 post ER 1:5		<input type="checkbox"/>	✓			
BAC 11 post ER 1:5		<input type="checkbox"/>	✓			
BAC 9 lib 1:3		<input type="checkbox"/>	✓			
BAC 11 lib 1:3		<input type="checkbox"/>	✓			
BAC 12 post ER 1:5		<input type="checkbox"/>	✓			
BAC 18 post ER 1:5		<input type="checkbox"/>	✓			
BAC 12 lib 1:3		<input type="checkbox"/>	✓			
BAC 18 lib 1:3		<input type="checkbox"/>	✓			
		<input type="checkbox"/>				
		<input type="checkbox"/>				
		<input type="checkbox"/>				
Ladder		<input type="checkbox"/>	✓			

Chip Lot # **Reagent Kit Lot #**

Chip Comments :

Assay Class: DNA 12000
Data Path: C:\...ents and Settings\Bioanalyzer\2012-08-24\2012-08-24_001.xad

Created: 8/24/2012 11:04:33 AM
Modified: 8/24/2012 11:31:38 AM

Electrophoresis Assay Details

General Analysis Settings

Number of Available Sample and Ladder Wells (Max.) : 13
Minimum Visible Range [s] : 20
Maximum Visible Range [s] : 99
Start Analysis Time Range [s] : 20
End Analysis Time Range [s] : 98.95
Ladder Concentration [ng/μl] : 44
Uses Standard Area for Ladder Fragments
Lower Marker Concentration [ng/μl] : 8.3
Upper Marker Concentration [ng/μl] : 4.2
Used Upper Marker for Quantitation
This is a Qualitative Assay Only
Standard Curve Fit is Point to Point
Show Data Aligned to Lower and Upper Marker

Integrator Settings

Integration Start Time [s] : 20
Integration End Time [s] : 98.95
Slope Threshold : 0.8
Height Threshold [FU] : 20
Area Threshold : 0.1
Width Threshold [s] : 0.5
Baseline Plateau [s] : 0.5

Filter Settings

Filter Width [s] : 0.5
Polynomial Order : 4

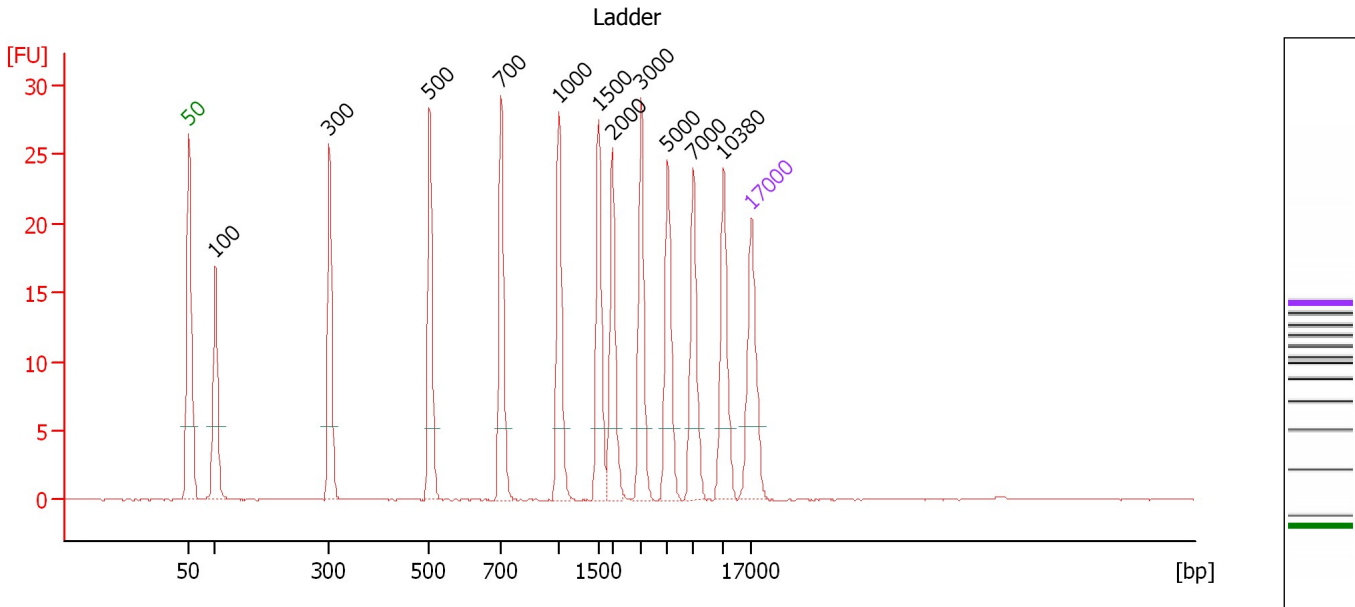
Ladder

Ladder Peak	Size	Area
1	50	120
2	100	48
3	300	61
4	500	77
5	700	81
6	1000	86
7	1500	92
8	2000	92
9	3000	96
10	5000	100
11	7000	98
12	10380	102
13	17000	110

Assay Class: DNA 12000
 Data Path: C:\...ents and Settings\Bioanalyzer\2012-08-24\2012-08-24_001.xad

Created: 8/24/2012 11:04:33 AM
 Modified: 8/24/2012 11:31:38 AM

Electropherogram Summary



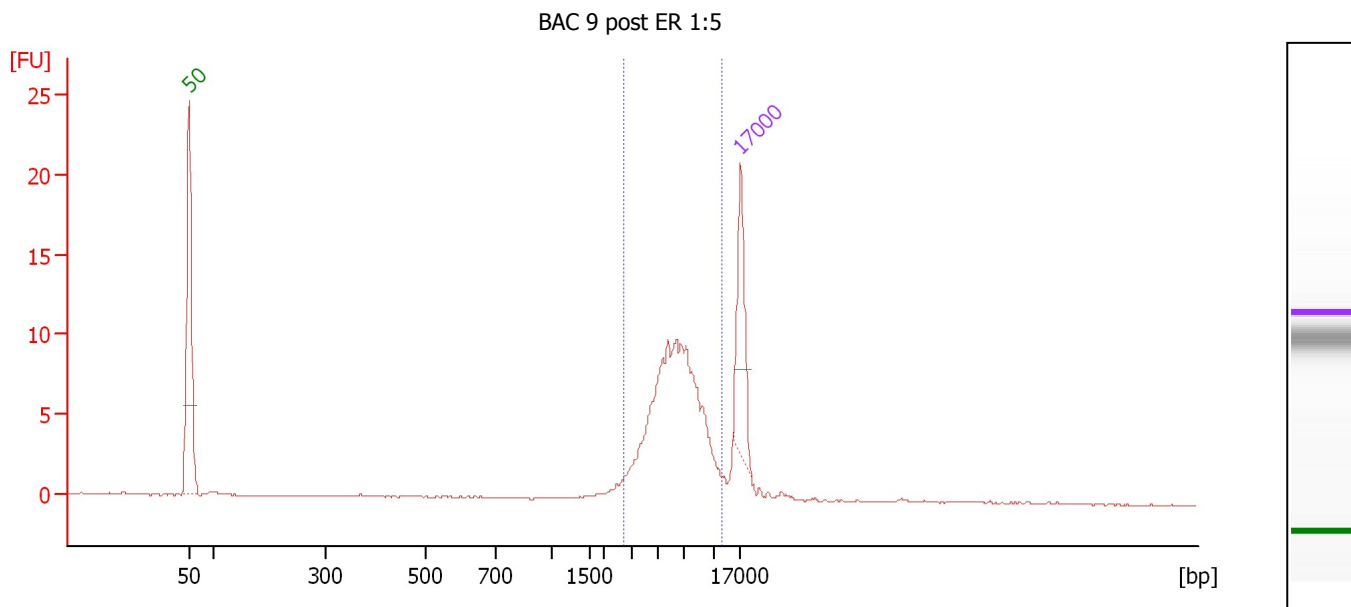
Peak table for Ladder

Peak	Size [bp]	Conc. [ng/μl]	Molarity [nmol/l]	Observations
1	50	8.30	251.5	Lower Marker
2	100	4.00	60.6	Ladder Peak
3	300	4.00	20.2	Ladder Peak
4	500	4.00	12.1	Ladder Peak
5	700	4.00	8.7	Ladder Peak
6	1,000	4.00	6.1	Ladder Peak
7	1,500	4.00	4.0	Ladder Peak
8	2,000	4.00	3.0	Ladder Peak
9	3,000	4.00	2.0	Ladder Peak
10	5,000	4.00	1.2	Ladder Peak
11	7,000	4.00	0.9	Ladder Peak
12	10,380	4.00	0.6	Ladder Peak
13	17,000	4.20	0.4	Upper Marker

Assay Class: DNA 12000
 Data Path: C:\...ents and Settings\Bioanalyzer\2012-08-24\2012-08-24_001.xad

Created: 8/24/2012 11:04:33 AM
 Modified: 8/24/2012 11:31:38 AM

Electropherogram Summary Continued ...



Setpoint Deviations for sample 1 : BAC 9 post ER 1:5

Height Threshold [FU] : 10

Overall Results for sample 1 : BAC 9 post ER 1:5

Number of peaks found: 0 Area 1: 40.6

Peak table for sample 1 : BAC 9 post ER 1:5

Peak	Size [bp]	Conc. [ng/μl]	Molarity [nmol/l]	Observations
1	50	8.30	251.5	Lower Marker
2	17,000	4.20	0.4	Upper Marker

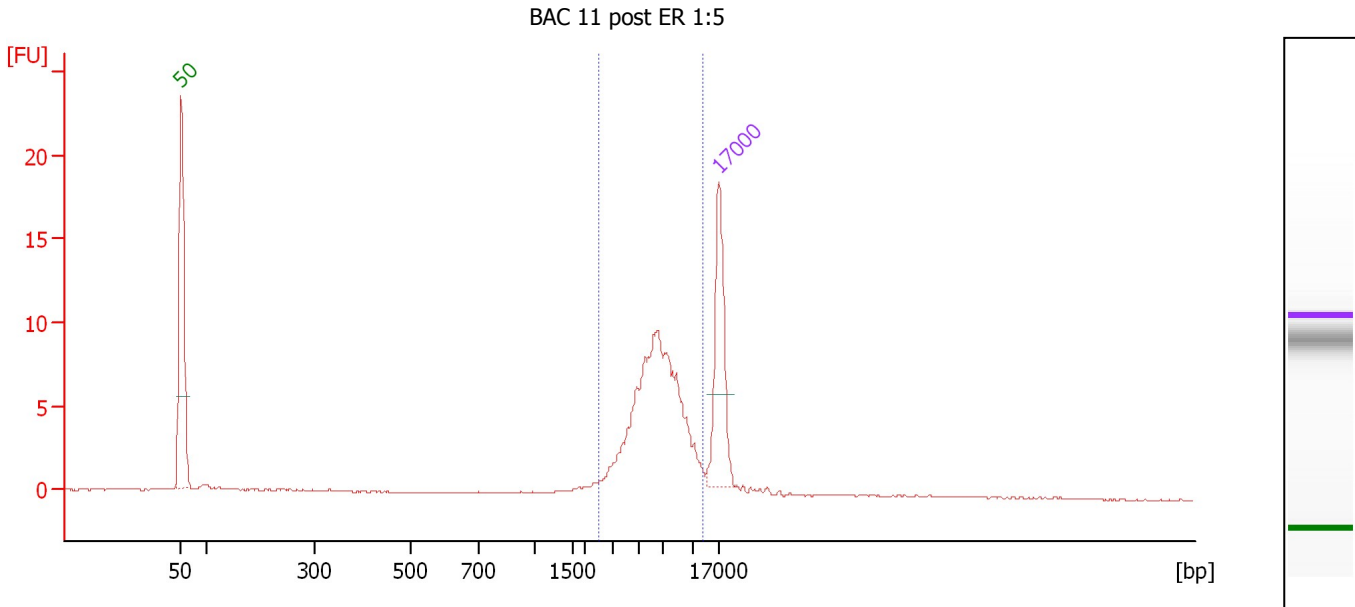
Region table for sample 1 : BAC 9 post ER 1:5

From [bp]	To [bp]	Average Size [bp]	Conc. [ng/μl]	Area	% of Total	Size distribution in CV [%]	Color
2,689	12,601	6,493	16.32	40.6	85	30.8	Blue

Assay Class: DNA 12000
 Data Path: C:\...ents and Settings\Bioanalyzer\2012-08-24\2012-08-24_001.xad

Created: 8/24/2012 11:04:33 AM
 Modified: 8/24/2012 11:31:38 AM

Electropherogram Summary Continued ...



Setpoint Deviations for sample 2 : BAC 11 post ER 1:5

Height Threshold [FU] : 10

Overall Results for sample 2 : BAC 11 post ER 1:5

Number of peaks found: 0 Area 1: 37.2

Peak table for sample 2 : BAC 11 post ER 1:5

Peak	Size [bp]	Conc. [ng/μl]	Molarity [nmol/l]	Observations
1	50	8.30	251.5	Lower Marker
2	17,000	4.20	0.4	Upper Marker

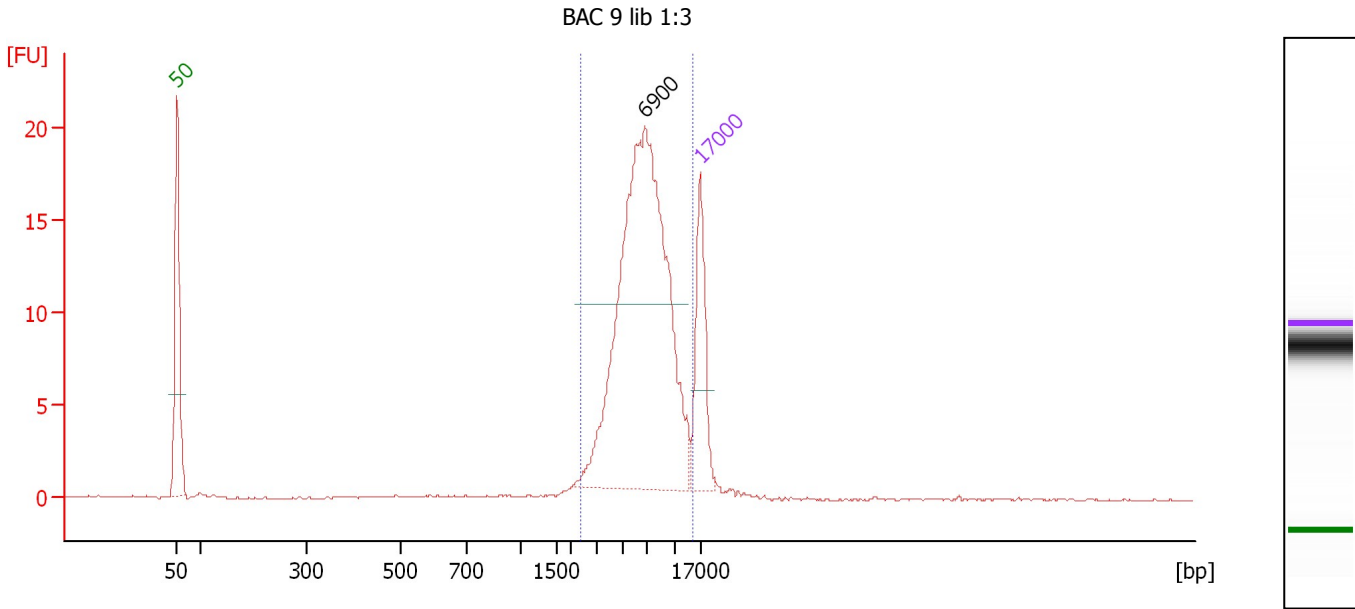
Region table for sample 2 : BAC 11 post ER 1:5

From [bp]	To [bp]	Average Size [bp]	Conc. [ng/μl]	Area	% of Total	Size distribution in CV [%]	Color
2,500	13,340	6,685	12.16	37.2	79	32.0	Blue

Assay Class: DNA 12000
 Data Path: C:\...ents and Settings\Bioanalyzer\2012-08-24\2012-08-24_001.xad

Created: 8/24/2012 11:04:33 AM
 Modified: 8/24/2012 11:31:38 AM

Electropherogram Summary Continued ...



Setpoint Deviations for sample 3 : BAC 9 lib 1:3

Height Threshold [FU] : 10

Overall Results for sample 3 : BAC 9 lib 1:3

Number of peaks found: 1 Area: 81.0

Peak table for sample 3 : BAC 9 lib 1:3

Peak	Size [bp]	Conc. [ng/μl]	Molarity [nmol/l]	Observations
1	50	8.30	251.5	Lower Marker
2	6,900	25.60	5.6	
3	17,000	4.20	0.4	Upper Marker

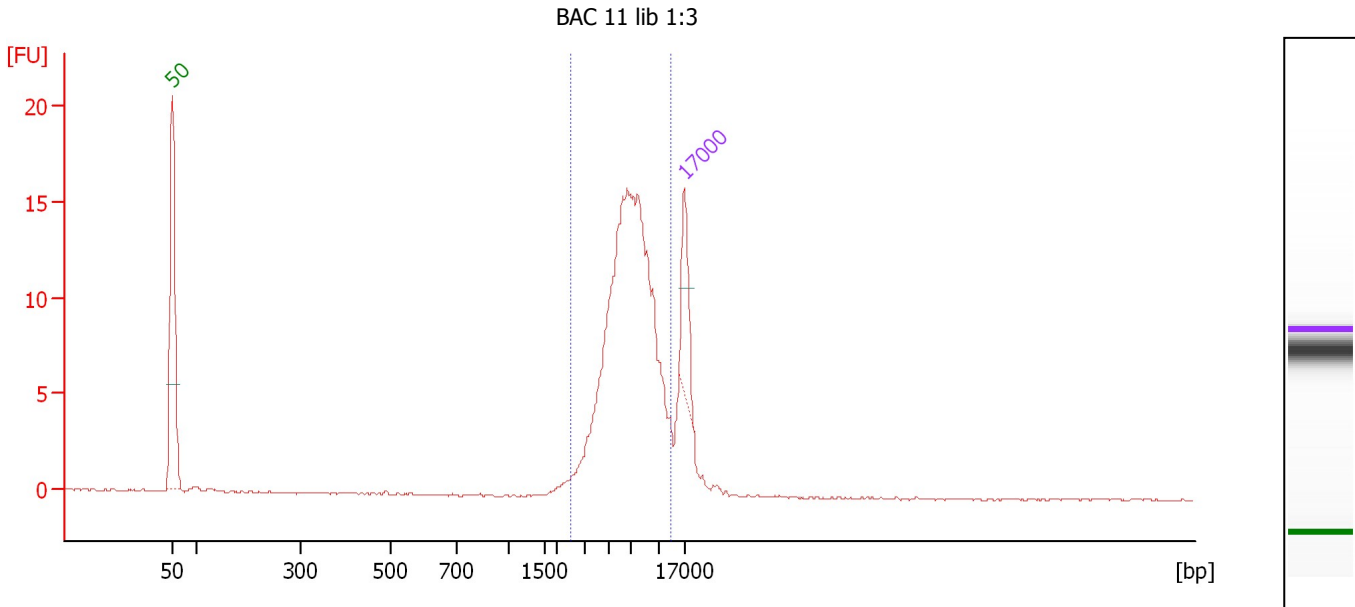
Region table for sample 3 : BAC 9 lib 1:3

From [bp]	To [bp]	Average Size [bp]	Conc. [ng/μl]	Area	% of Total	Size distribution in CV [%]	Color
2,381	15,405	7,102	26.66	81.0	95	34.8	Blue

Assay Class: DNA 12000
 Data Path: C:\...ents and Settings\Bioanalyzer\2012-08-24\2012-08-24_001.xad

Created: 8/24/2012 11:04:33 AM
 Modified: 8/24/2012 11:31:38 AM

Electropherogram Summary Continued ...



Setpoint Deviations for sample 4 : BAC 11 lib 1:3

Height Threshold [FU] : 10

Overall Results for sample 4 : BAC 11 lib 1:3

Number of peaks found: 0 Area 1: 60.6

Peak table for sample 4 : BAC 11 lib 1:3

Peak	Size [bp]	Conc. [ng/μl]	Molarity [nmol/l]	Observations
1	50	8.30	251.5	Lower Marker
2	17,000	4.20	0.4	Upper Marker

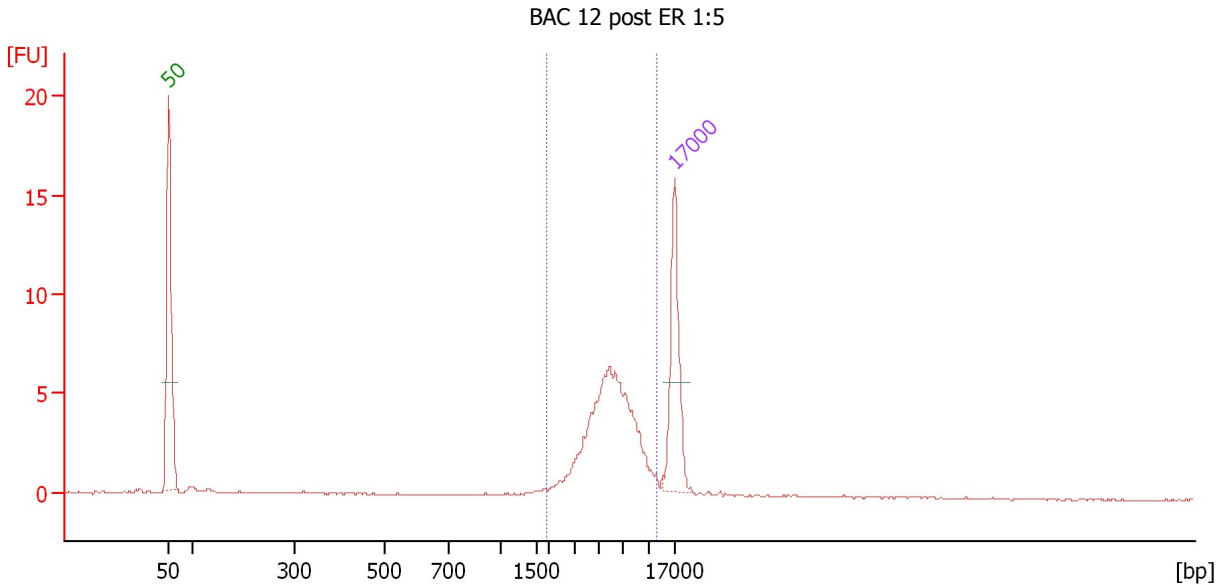
Region table for sample 4 : BAC 11 lib 1:3

From [bp]	To [bp]	Average Size [bp]	Conc. [ng/μl]	Area	% of Total	Size distribution in CV [%]	Color
2,494	13,510	7,089	45.23	60.6	93	30.8	Blue

Assay Class: DNA 12000
 Data Path: C:\...ents and Settings\Bioanalyzer\2012-08-24\2012-08-24_001.xad

Created: 8/24/2012 11:04:33 AM
 Modified: 8/24/2012 11:31:38 AM

Electropherogram Summary Continued ...



Setpoint Deviations for sample 5 : BAC 12 post ER 1:5

Height Threshold [FU] : 10

Overall Results for sample 5 : BAC 12 post ER 1:5

Number of peaks found: 0 Area 1: 24.0

Peak table for sample 5 : BAC 12 post ER 1:5

Peak	Size [bp]	Conc. [ng/μl]	Molarity [nmol/l]	Observations
1	50	8.30	251.5	Lower Marker
2	17,000	4.20	0.4	Upper Marker

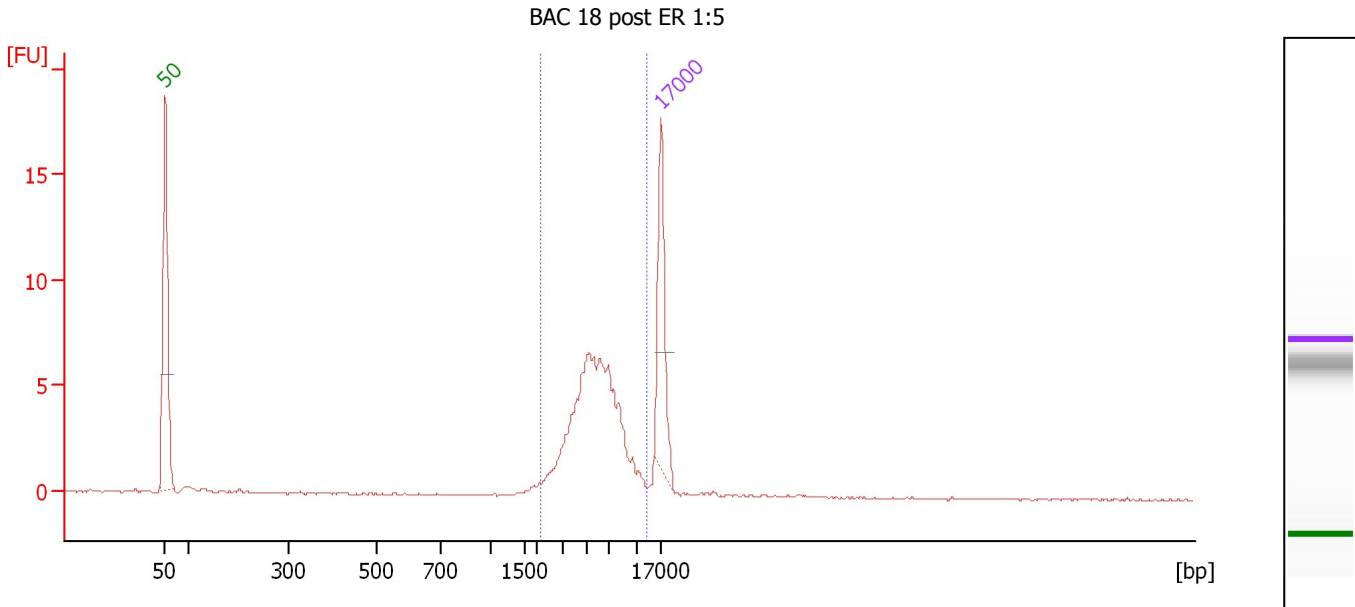
Region table for sample 5 : BAC 12 post ER 1:5

From [bp]	To [bp]	Average Size [bp]	Conc. [ng/μl]	Area	% of Total	Size distribution in CV [%]	Color
1,858	12,472	6,097	9.98	24.0	93	33.7	Blue

Assay Class: DNA 12000
 Data Path: C:\...ents and Settings\Bioanalyzer\2012-08-24\2012-08-24_001.xad

Created: 8/24/2012 11:04:33 AM
 Modified: 8/24/2012 11:31:38 AM

Electropherogram Summary Continued ...



Setpoint Deviations for sample 6 : BAC 18 post ER 1:5

Height Threshold [FU] : 10

Overall Results for sample 6 : BAC 18 post ER 1:5

Number of peaks found: 0 Area 1: 25.5

Peak table for sample 6 : BAC 18 post ER 1:5

Peak	Size [bp]	Conc. [ng/μl]	Molarity [nmol/l]	Observations
1	50	8.30	251.5	Lower Marker
2	17,000	4.20	0.4	Upper Marker

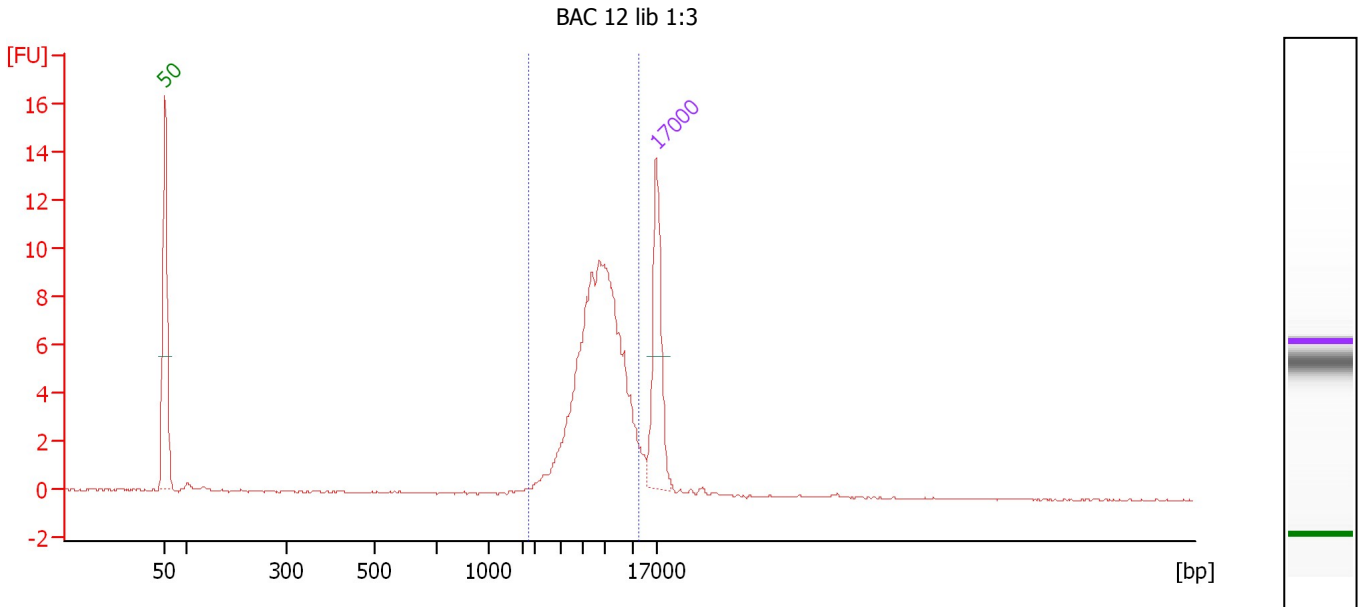
Region table for sample 6 : BAC 18 post ER 1:5

From [bp]	To [bp]	Average Size [bp]	Conc. [ng/μl]	Area	% of Total	Size distribution in CV [%]	Color
2,114	13,130	5,866	12.49	25.5	94	34.8	Blue

Assay Class: DNA 12000
 Data Path: C:\...ents and Settings\Bioanalyzer\2012-08-24\2012-08-24_001.xad

Created: 8/24/2012 11:04:33 AM
 Modified: 8/24/2012 11:31:38 AM

Electropherogram Summary Continued ...



Setpoint Deviations for sample 7 : BAC 12 lib 1:3

Height Threshold [FU] : 10

Overall Results for sample 7 : BAC 12 lib 1:3

Number of peaks found: 0 Area 1: 35.9

Peak table for sample 7 : BAC 12 lib 1:3

Peak	Size [bp]	Conc. [ng/μl]	Molarity [nmol/l]	Observations
1	50	8.30	251.5	Lower Marker
2	17,000	4.20	0.4	Upper Marker

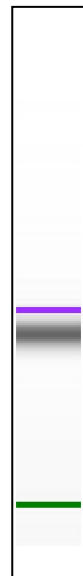
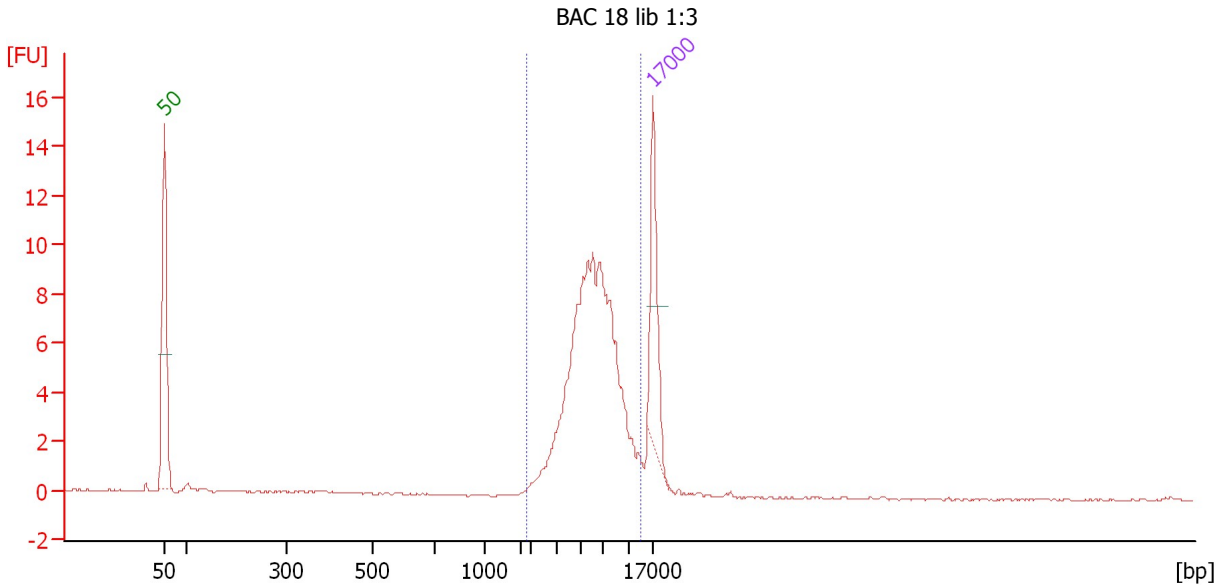
Region table for sample 7 : BAC 12 lib 1:3

From [bp]	To [bp]	Average Size [bp]	Conc. [ng/μl]	Area	% of Total	Size distribution in CV [%]	Color
1,779	12,447	6,551	16.87	35.9	95	32.4	Blue

Assay Class: DNA 12000
 Data Path: C:\...ents and Settings\Bioanalyzer\2012-08-24\2012-08-24_001.xad

Created: 8/24/2012 11:04:33 AM
 Modified: 8/24/2012 11:31:38 AM

Electropherogram Summary Continued ...



Setpoint Deviations for sample 8 : BAC 18 lib 1:3

Height Threshold [FU] : 10

Overall Results for sample 8 : BAC 18 lib 1:3

Number of peaks found: 0 Area 1: 37.7

Peak table for sample 8 : BAC 18 lib 1:3

Peak	Size [bp]	Conc. [ng/μl]	Molarity [nmol/l]	Observations
1	50	8.30	251.5	Lower Marker
2	17,000	4.20	0.4	Upper Marker

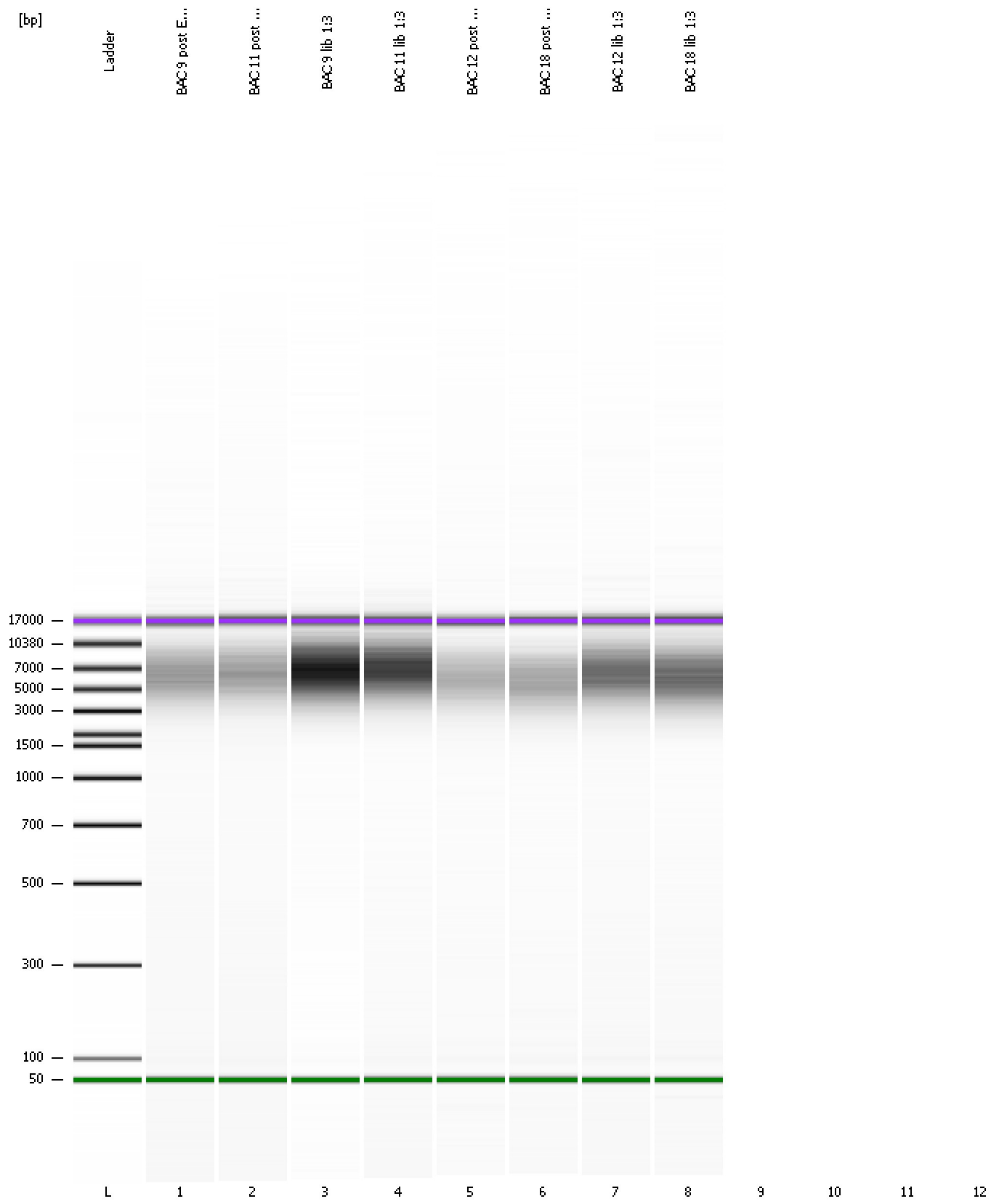
Region table for sample 8 : BAC 18 lib 1:3

From [bp]	To [bp]	Average Size [bp]	Conc. [ng/μl]	Area	% of Total	Size distribution in CV [%]	Color
1,787	13,987	6,349	22.43	37.7	95	35.8	Blue

Assay Class: DNA 12000
Data Path: C:\...ents and Settings\Bioanalyzer\2012-08-24\2012-08-24_001.xad

Created: 8/24/2012 11:04:33 AM
Modified: 8/24/2012 11:31:38 AM

Gel Image



Assay Class: DNA 12000
Data Path: C:\...ents and Settings\Bioanalyzer\2012-08-24\2012-08-24_001.xad

Created: 8/24/2012 11:04:33 AM
Modified: 8/24/2012 11:31:38 AM

Invalid Samples

Sample 9 has not been run, no results available.

Sample 10 has not been run, no results available.

Sample 11 has not been run, no results available.

Sample 12 has not been run, no results available.