

Assay Class: High Sensitivity DNA Assay  
Data Path: C:\...ents and Settings\Bioanalyzer\2012-08-24\2012-08-24\_002.xad

Created: 8/24/2012 2:55:18 PM  
Modified: 8/24/2012 3:40:06 PM

**Electrophoresis File Run Summary**

Instrument Information:

Instrument Name: DE13701086      Firmware: C.01.069  
Serial#: DE13701086      Type: G2938B

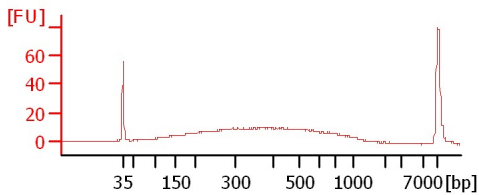
Assay Information:

Assay Origin Path: C:\Program Files\Agilent\2100 bioanalyzer\2100 expert\assays\dsDNA\High Sensitivity DNA.xsy  
Assay Class: High Sensitivity DNA Assay  
Version: 1.03  
Assay Comments: Copyright © 2003-2010 Agilent Technologies

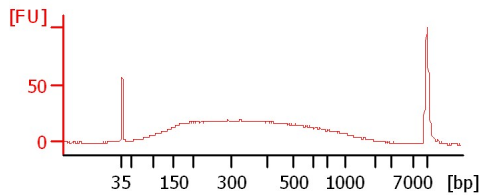
Chip Information:

Chip Lot #:  
Reagent Kit Lot #:  
Chip Comments:

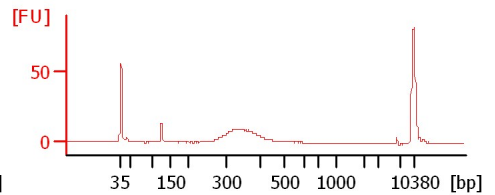
2005\_OKJ\_170\_7x15s90s



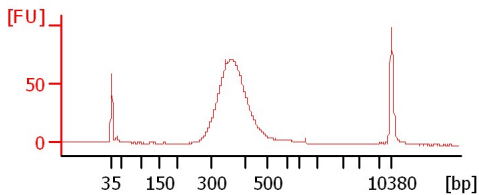
2005\_OKJ\_188\_7x15s90s



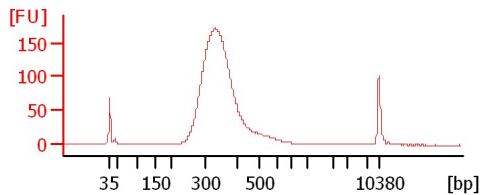
2012L\_MINE\_099\_NoShear



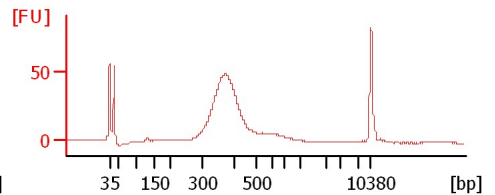
2012L\_MINE\_100\_NoShear



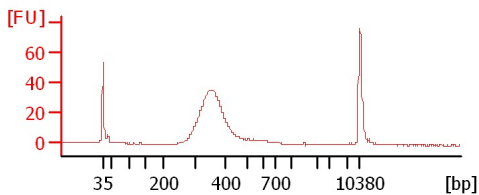
2005\_OKJ\_042\_NoShear



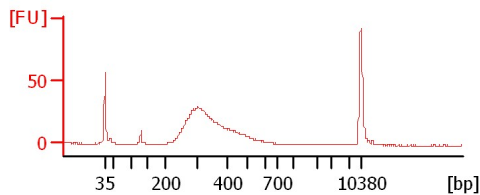
2005\_OKJ\_017\_NoShear



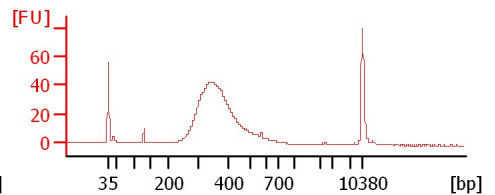
2005\_OKJ\_045\_NoShear



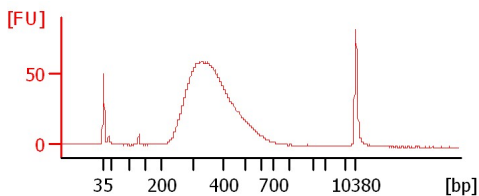
2012L\_SAGA\_135\_15xPCR\_NoShear



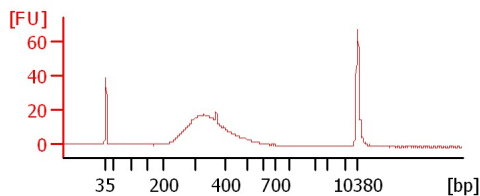
2012L\_SAGA\_106\_15xPCR\_NoShear



2012L\_LUPI\_082\_14xPCR\_NoShear



2012L\_MINE\_003\_NoShear



Assay Class: High Sensitivity DNA Assay  
Data Path: C:\...ents and Settings\Bioanalyzer\2012-08-24\2012-08-24\_002.xad

Created: 8/24/2012 2:55:18 PM  
Modified: 8/24/2012 3:40:06 PM

**Electrophoresis File Run Summary (Chip Summary)**

Sample Name	Sample Comment	Rest. Digest	Status	Observation	Result Label	Result Color
2005_OKJ_170_7x15s90s		<input type="checkbox"/>	✓			
2005_OKJ_188_7x15s90s		<input type="checkbox"/>	✓			
2012L_MINE_099_NoShear		<input type="checkbox"/>	✓			
2012L_MINE_100_NoShear		<input type="checkbox"/>	✓			
2005_OKJ_042_NoShear		<input type="checkbox"/>	✓			
2005_OKJ_017_NoShear		<input type="checkbox"/>	✓			
2005_OKJ_045_NoShear		<input type="checkbox"/>	✓			
2012L_SAGA_135_15xPCR_NoShear		<input type="checkbox"/>	✓			
2012L_SAGA_106_15xPCR_NoShear		<input type="checkbox"/>	✓			
2012L_LUPI_082_14xPCR_NoShear		<input type="checkbox"/>	✓			
2012L_MINE_003_NoShear		<input type="checkbox"/>	✓			
Ladder		<input type="checkbox"/>	✓			

Chip Lot #

Reagent Kit Lot #

Chip Comments :

Assay Class: High Sensitivity DNA Assay  
Data Path: C:\...ents and Settings\Bioanalyzer\2012-08-24\2012-08-24\_002.xad

Created: 8/24/2012 2:55:18 PM  
Modified: 8/24/2012 3:40:06 PM

**Electrophoresis Assay Details**

**General Analysis Settings**

Number of Available Sample and Ladder Wells (Max.) : 12  
Minimum Visible Range [s] : 32  
Maximum Visible Range [s] : 138  
Start Analysis Time Range [s] : 33  
End Analysis Time Range [s] : 137.5  
Ladder Concentration [pg/μl] : 1950  
Uses Standard Area for Ladder Fragments  
Lower Marker Concentration [pg/μl] : 125  
Upper Marker Concentration [pg/μl] : 75  
Used Upper Marker for Quantitation  
Standard Curve Fit is Point to Point  
Show Data Aligned to Lower and Upper Marker

**Integrator Settings**

Integration Start Time [s] : 33.05  
Integration End Time [s] : 137  
Slope Threshold : 0.8  
Height Threshold [FU] : 5  
Area Threshold : 0.1  
Width Threshold [s] : 0.6  
Baseline Plateau [s] : 0.5

**Filter Settings**

Filter Width [s] : 0.5  
Polynomial Order : 4

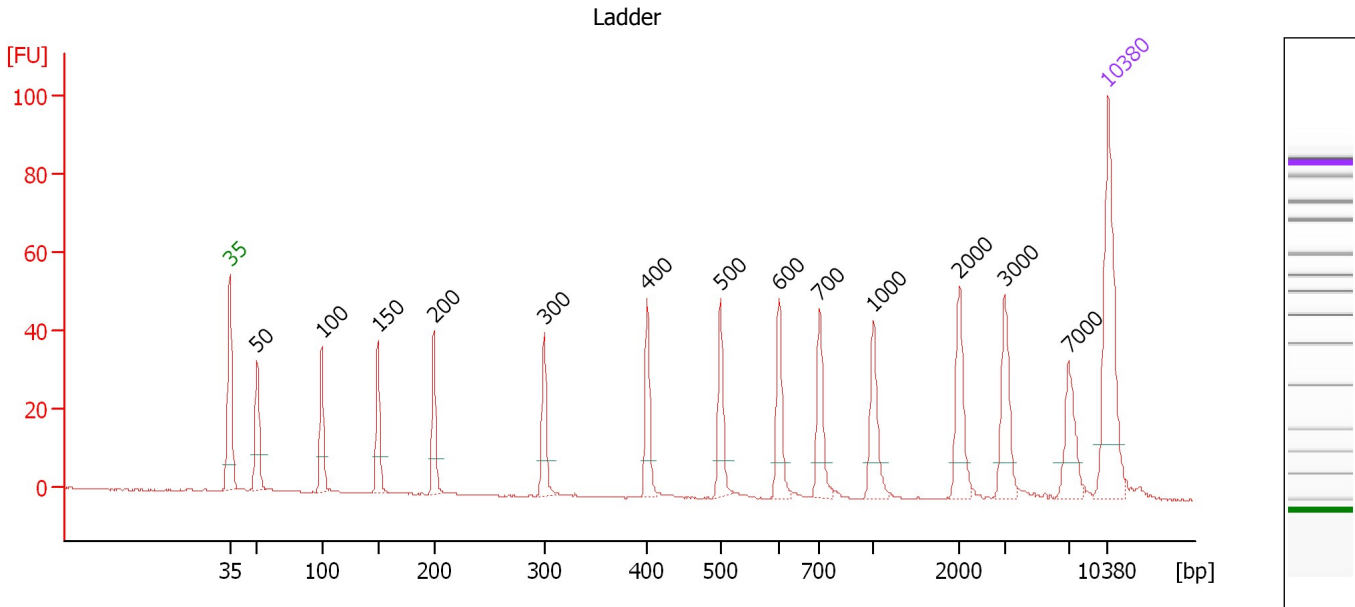
**Ladder**

Ladder Peak	Size	Area
1	35	160
2	50	210
3	100	208
4	150	221
5	200	242
6	300	270
7	400	305
8	500	306
9	600	336
10	700	321
11	1000	366
12	2000	413
13	3000	411
14	7000	400
15	10380	214

Assay Class: High Sensitivity DNA Assay  
 Data Path: C:\...ents and Settings\Bioanalyzer\2012-08-24\2012-08-24\_002.xad

Created: 8/24/2012 2:55:18 PM  
 Modified: 8/24/2012 3:40:06 PM

**Electropherogram Summary**



**Overall Results for Ladder**

Noise: 0.1

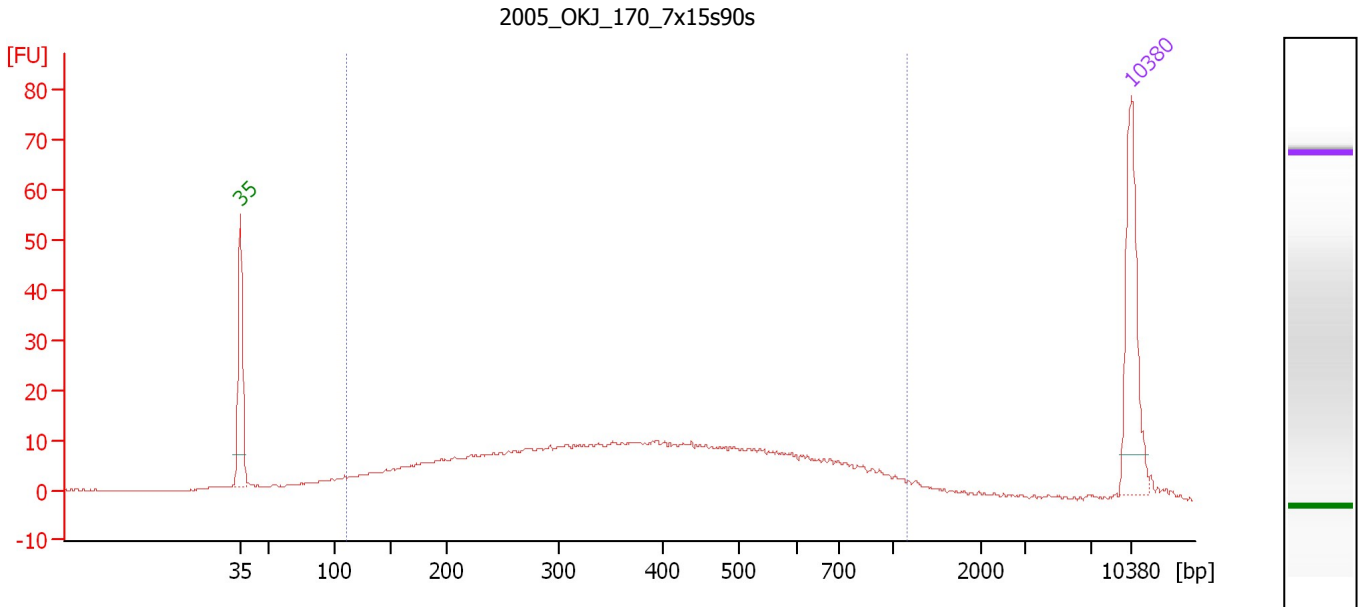
**Peak table for Ladder**

Peak	Size [bp]	Conc. [pg/μl]	Molarity [pmol/l]	Observations
1	35	125.00	5,411.3	Lower Marker
2	50	150.00	4,545.5	Ladder Peak
3	100	150.00	2,272.7	Ladder Peak
4	150	150.00	1,515.2	Ladder Peak
5	200	150.00	1,136.4	Ladder Peak
6	300	150.00	757.6	Ladder Peak
7	400	150.00	568.2	Ladder Peak
8	500	150.00	454.5	Ladder Peak
9	600	150.00	378.8	Ladder Peak
10	700	150.00	324.7	Ladder Peak
11	1,000	150.00	227.3	Ladder Peak
12	2,000	150.00	113.6	Ladder Peak
13	3,000	150.00	75.8	Ladder Peak
14	7,000	150.00	32.5	Ladder Peak
15	10,380	75.00	10.9	Upper Marker

Assay Class: High Sensitivity DNA Assay  
 Data Path: C:\...ents and Settings\Bioanalyzer\2012-08-24\2012-08-24\_002.xad

Created: 8/24/2012 2:55:18 PM  
 Modified: 8/24/2012 3:40:06 PM

**Electropherogram Summary Continued ...**



**Overall Results for sample 1 : 2005 OKJ 170 7x15s90s**

Number of peaks found: 0                      Corr. Area 1: 493.1  
 Noise: 0.1

**Peak table for sample 1 : 2005 OKJ 170 7x15s90s**

Peak	Size [bp]	Conc. [pg/μl]	Molarity [pmol/l]	Observations
1	35	125.00	5,411.3	Lower Marker
2	10,380	75.00	10.9	Upper Marker

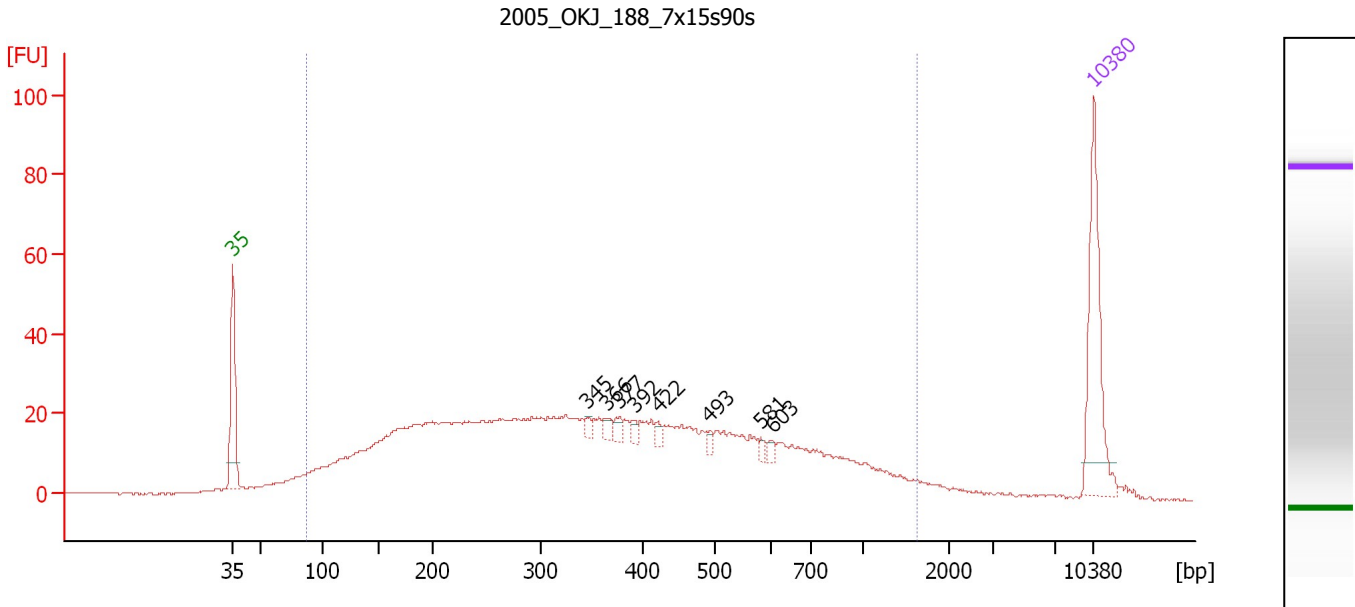
**Region table for sample 1 : 2005 OKJ 170 7x15s90s**

From [bp]	To [bp]	Average Size [bp]	Molarity [pmol/l]	Conc. [pg/μl]	Corr. Area	% of Total	Size distribution in CV [%]	Color
111	1,167	413	4,067.0	778.73	493.1	90	47.8	Blue

Assay Class: High Sensitivity DNA Assay  
 Data Path: C:\...ents and Settings\Bioanalyzer\2012-08-24\2012-08-24\_002.xad

Created: 8/24/2012 2:55:18 PM  
 Modified: 8/24/2012 3:40:06 PM

**Electropherogram Summary Continued ...**



**Overall Results for sample 2 : 2005 OKJ 188 7x15s90s**

Number of peaks found: 8                      Corr. Area 1: 1,070.4  
 Noise: 0.2

**Peak table for sample 2 : 2005 OKJ 188 7x15s90s**

Peak	Size [bp]	Conc. [pg/μl]	Molarity [pmol/l]	Observations
1	35	125.00	5,411.3	Lower Marker
2	345	5.57	24.5	
3	366	7.48	31.0	
4	377	6.59	26.5	
5	392	5.08	19.6	
6	422	5.14	18.5	
7	493	4.73	14.5	
8	581	3.89	10.1	
9	603	4.61	11.6	
10	10,380	75.00	10.9	Upper Marker

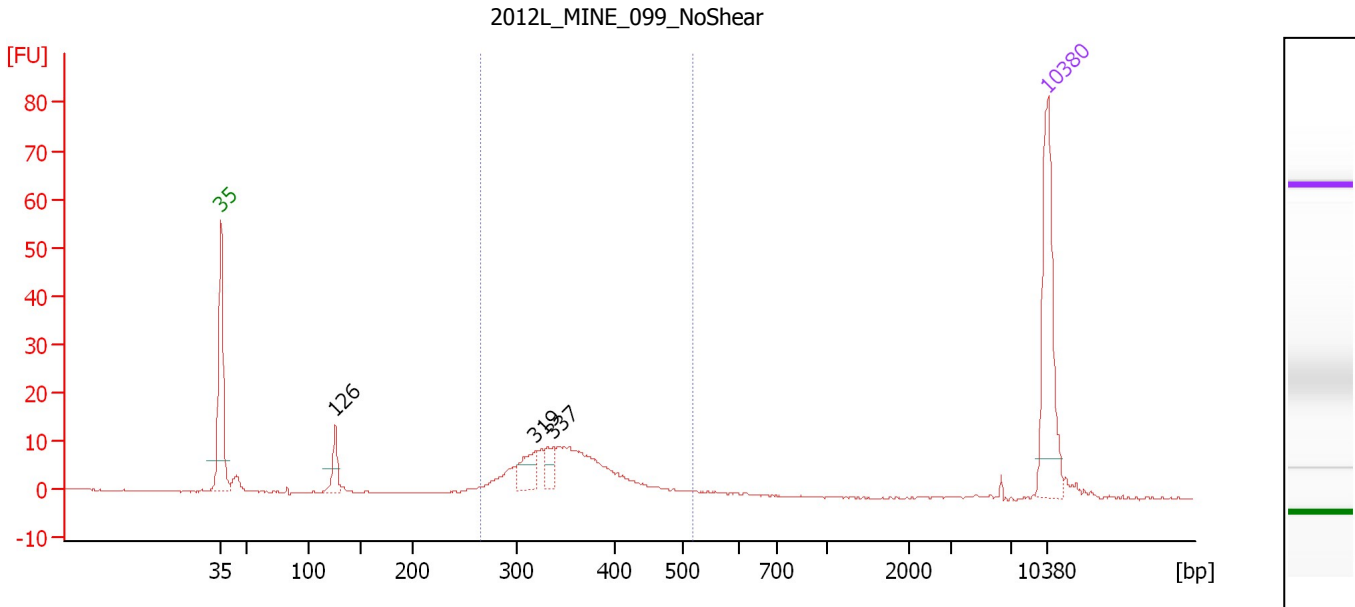
**Region table for sample 2 : 2005 OKJ 188 7x15s90s**

From [bp]	To [bp]	Average Size [bp]	Molarity [pmol/l]	Conc. [pg/μl]	Corr. Area	% of Total	Size distribution in CV [%]	Color
86	1,633	407	8,485.7	1,417.29	1,070.4	94	62.2	Blue

Assay Class: High Sensitivity DNA Assay  
 Data Path: C:\...ents and Settings\Bioanalyzer\2012-08-24\2012-08-24\_002.xad

Created: 8/24/2012 2:55:18 PM  
 Modified: 8/24/2012 3:40:06 PM

**Electropherogram Summary Continued ...**



**Overall Results for sample 3 : 2012L MINE 099 NoShear**

Number of peaks found: 3                      Corr. Area 1: 124.2  
 Noise: 0.1

**Peak table for sample 3 : 2012L MINE 099 NoShear**

Peak	Size [bp]	Conc. [pg/μl]	Molarity [pmol/l]	Observations
1	35	125.00	5,411.3	Lower Marker
2	126	24.97	300.4	
3	319	26.75	127.2	
4	337	15.57	69.9	
5	10,380	75.00	10.9	Upper Marker

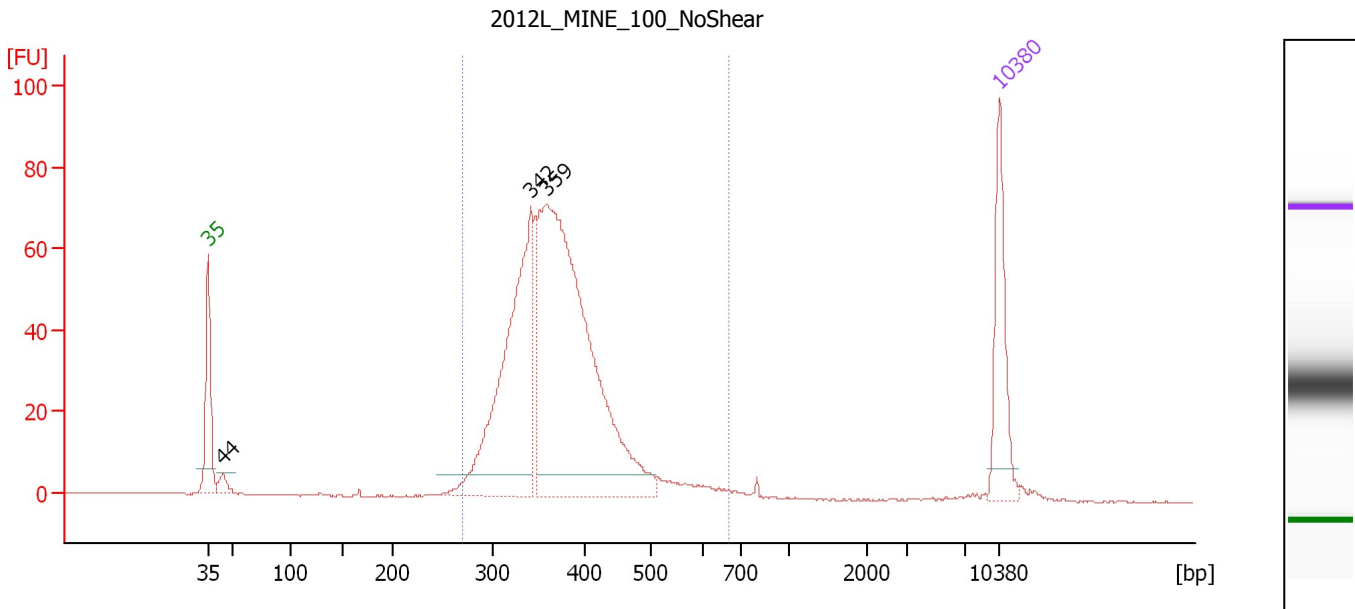
**Region table for sample 3 : 2012L MINE 099 NoShear**

From [bp]	To [bp]	Average Size [bp]	Molarity [pmol/l]	Conc. [pg/μl]	Corr. Area	% of Total	Size distribution in CV [%]	Color
264	517	353	800.1	182.82	124.2	80	13.5	Blue

Assay Class: High Sensitivity DNA Assay  
 Data Path: C:\...ents and Settings\Bioanalyzer\2012-08-24\2012-08-24\_002.xad

Created: 8/24/2012 2:55:18 PM  
 Modified: 8/24/2012 3:40:06 PM

**Electropherogram Summary Continued ...**



**Overall Results for sample 4 : 2012L MINE 100 NoShear**

Number of peaks found: 3                      Corr. Area 1: 837.0  
 Noise: 0.1

**Peak table for sample 4 : 2012L MINE 100 NoShear**

Peak	Size [bp]	Conc. [pg/μl]	Molarity [pmol/l]	Observations
1	35	125.00	5,411.3	Lower Marker
2	44	16.79	578.5	
3	342	350.67	1,555.2	
4	359	639.98	2,697.6	
5	10,380	75.00	10.9	Upper Marker

**Region table for sample 4 : 2012L MINE 100 NoShear**

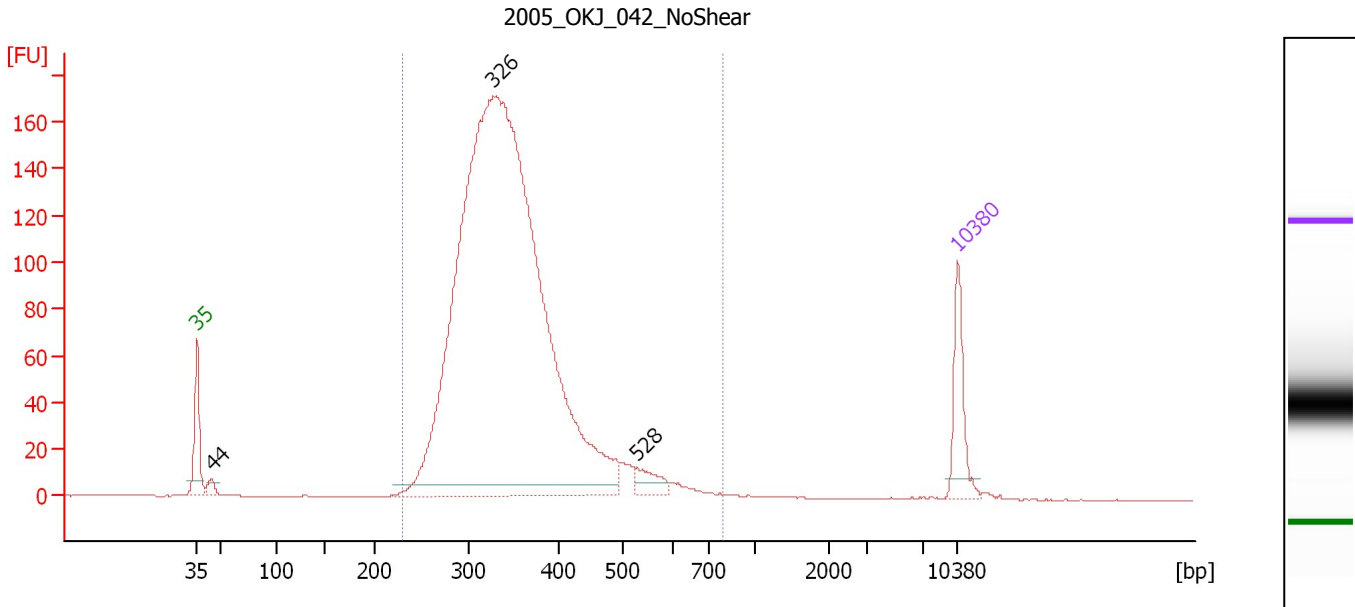
From [bp]	To [bp]	Average Size [bp]	Molarity [pmol/l]	Conc. [pg/μl]	Corr. Area	% of Total	Size distribution in CV [%]	Color
270	670	374	4,316.4	1,039.00	837.0	96	15.3	Blue



Assay Class: High Sensitivity DNA Assay  
 Data Path: C:\...ents and Settings\Bioanalyzer\2012-08-24\2012-08-24\_002.xad

Created: 8/24/2012 2:55:18 PM  
 Modified: 8/24/2012 3:40:06 PM

**Electropherogram Summary Continued ...**



**Overall Results for sample 5 : 2005 OKJ 042 NoShear**

Number of peaks found: 3                      Corr. Area 1: 2,245.2  
 Noise: 0.1

**Peak table for sample 5 : 2005 OKJ 042 NoShear**

Peak	Size [bp]	Conc. [pg/μl]	Molarity [pmol/l]	Observations
1	35	125.00	5,411.3	Lower Marker
2	44	19.79	681.6	
3	326	2,744.35	12,738.0	
4	528	36.39	104.4	
5	10,380	75.00	10.9	Upper Marker

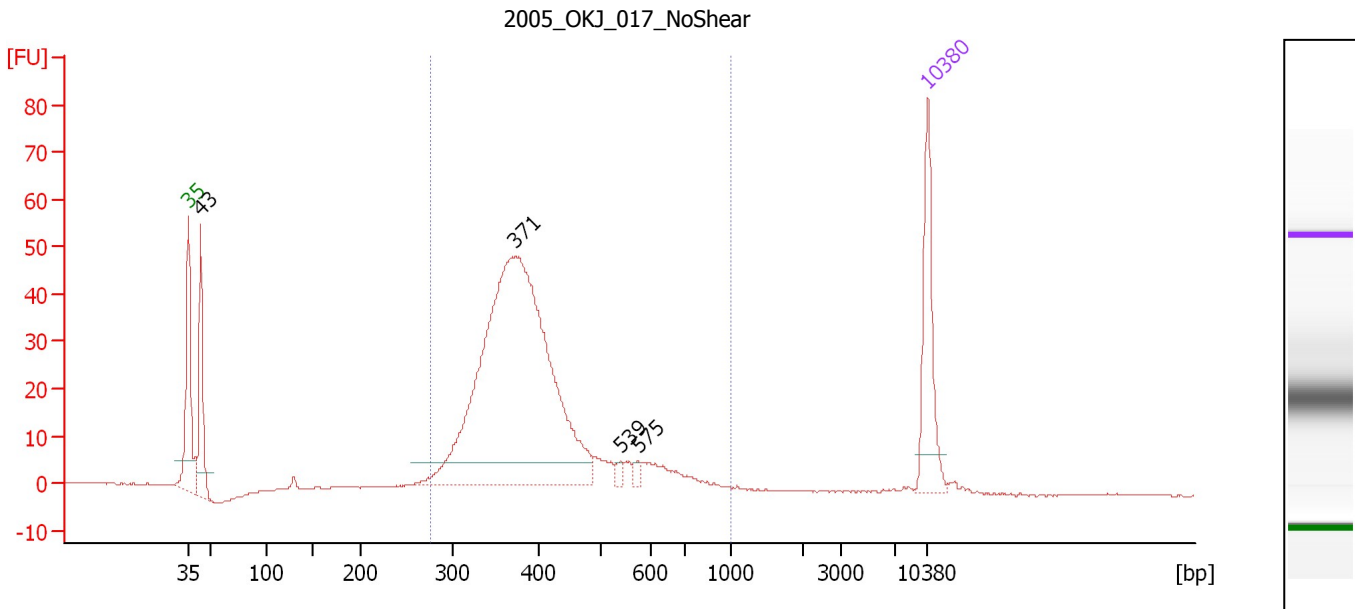
**Region table for sample 5 : 2005 OKJ 042 NoShear**

From [bp]	To [bp]	Average Size [bp]	Molarity [pmol/l]	Conc. [pg/μl]	Corr. Area	% of Total	Size distribution in CV [%]	Color
230	795	350	12,652.7	2,813.82	2,245.2	98	19.2	Blue

Assay Class: High Sensitivity DNA Assay  
 Data Path: C:\...ents and Settings\Bioanalyzer\2012-08-24\2012-08-24\_002.xad

Created: 8/24/2012 2:55:18 PM  
 Modified: 8/24/2012 3:40:06 PM

**Electropherogram Summary Continued ...**



**Overall Results for sample 6 : 2005 OKJ 017 NoShear**

Number of peaks found: 4                      Corr. Area 1: 565.7  
 Noise: 0.1

**Peak table for sample 6 : 2005 OKJ 017 NoShear**

Peak	Size [bp]	Conc. [pg/μl]	Molarity [pmol/l]	Observations
1	35	125.00	5,411.3	Lower Marker
2	43	112.10	3,929.8	
3	371	748.13	3,051.6	
4	539	6.61	18.6	
5	575	5.96	15.7	
6	10,380	75.00	10.9	Upper Marker

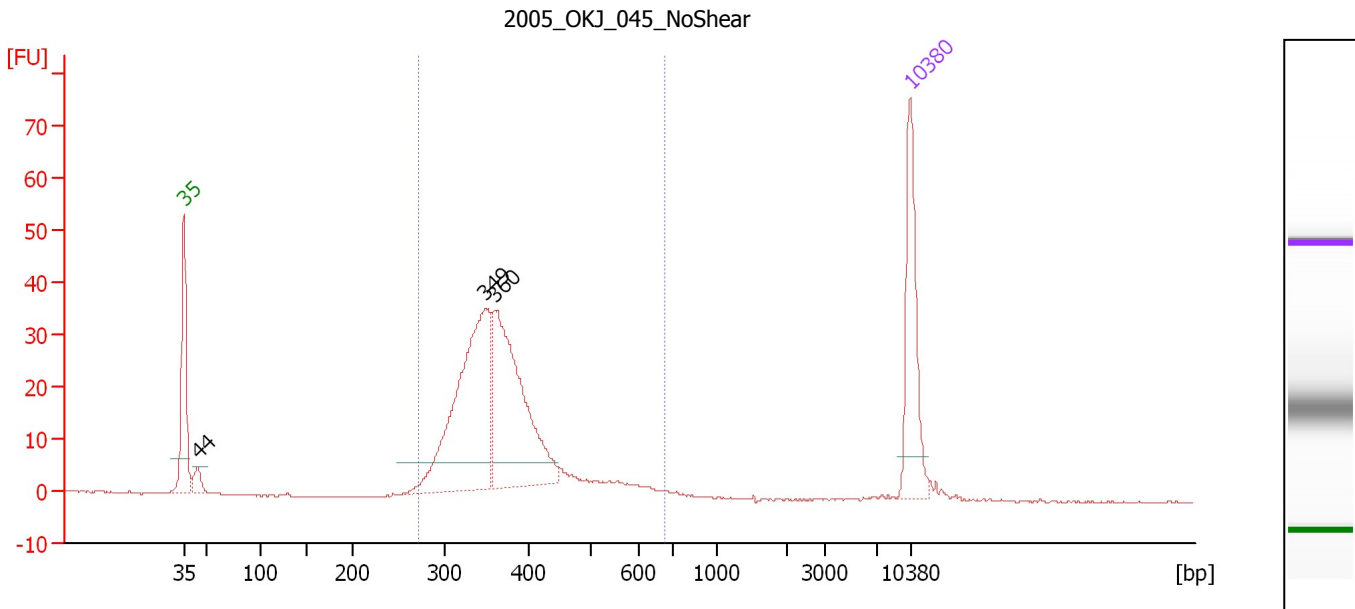
**Region table for sample 6 : 2005 OKJ 017 NoShear**

From [bp]	To [bp]	Average Size [bp]	Molarity [pmol/l]	Conc. [pg/μl]	Corr. Area	% of Total	Size distribution in CV [%]	Color
276	1,000	404	3,365.7	854.02	565.7	90	23.1	Blue

Assay Class: High Sensitivity DNA Assay  
 Data Path: C:\...ents and Settings\Bioanalyzer\2012-08-24\2012-08-24\_002.xad

Created: 8/24/2012 2:55:18 PM  
 Modified: 8/24/2012 3:40:06 PM

**Electropherogram Summary Continued ...**



**Overall Results for sample 7 : 2005 OKJ 045 NoShear**

Number of peaks found: 3                      Corr. Area 1: 386.1  
 Noise: 0.1

**Peak table for sample 7 : 2005 OKJ 045 NoShear**

Peak	Size [bp]	Conc. [pg/μl]	Molarity [pmol/l]	Observations
1	35	125.00	5,411.3	Lower Marker
2	44	18.95	651.5	
3	349	260.33	1,130.4	
4	360	222.39	935.4	
5	10,380	75.00	10.9	Upper Marker

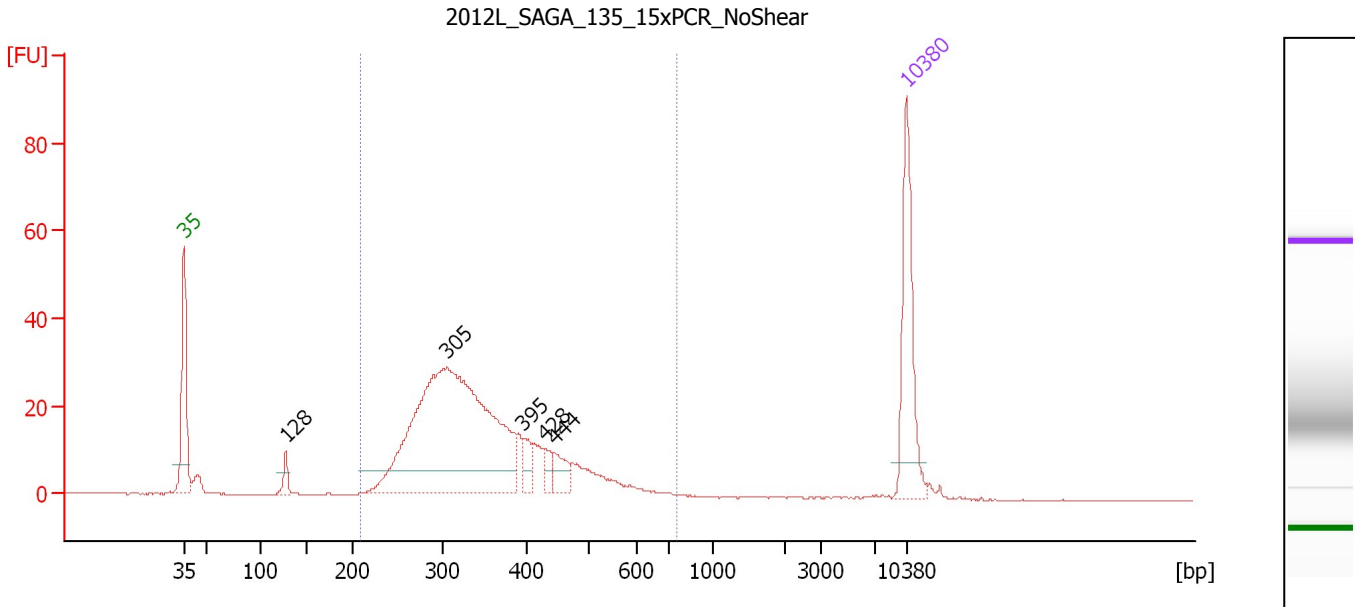
**Region table for sample 7 : 2005 OKJ 045 NoShear**

From [bp]	To [bp]	Average Size [bp]	Molarity [pmol/l]	Conc. [pg/μl]	Corr. Area	% of Total	Size distribution in CV [%]	Color
273	677	372	2,349.5	561.04	386.1	95	17.1	Blue

Assay Class: High Sensitivity DNA Assay  
 Data Path: C:\...ents and Settings\Bioanalyzer\2012-08-24\2012-08-24\_002.xad

Created: 8/24/2012 2:55:18 PM  
 Modified: 8/24/2012 3:40:06 PM

**Electropherogram Summary Continued ...**



**Overall Results for sample 8 : 2012L\_SAGA\_135\_15xPCR\_NoShear**

Number of peaks found: 5                      Corr. Area 1: 480.3  
 Noise: 0.1

**Peak table for sample 8 : 2012L\_SAGA\_135\_15xPCR\_NoShear**

Peak	Size [bp]	Conc. [pg/μl]	Molarity [pmol/l]	Observations
1	35	125.00	5,411.3	Lower Marker
2	128	14.52	171.8	
3	305	475.90	2,362.7	
4	395	16.45	63.1	
5	428	12.02	42.5	
6	444	19.70	67.2	
7	10,380	75.00	10.9	Upper Marker

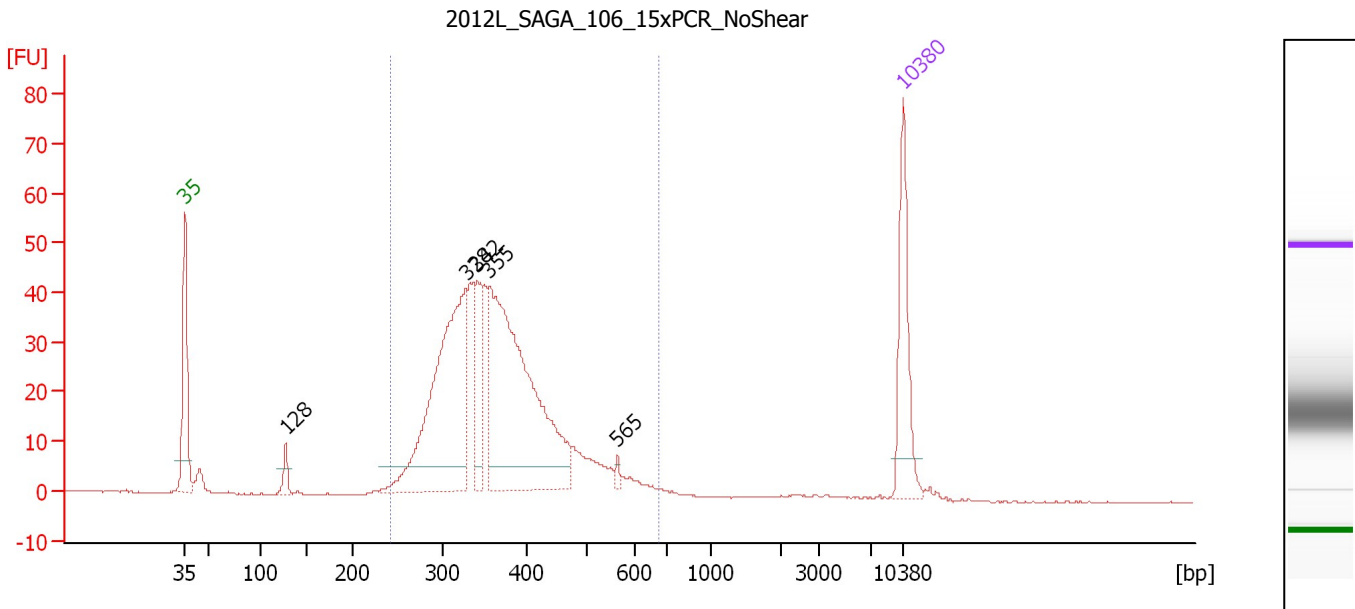
**Region table for sample 8 : 2012L\_SAGA\_135\_15xPCR\_NoShear**

From [bp]	To [bp]	Average Size [bp]	Molarity [pmol/l]	Conc. [pg/μl]	Corr. Area	% of Total	Size distribution in CV [%]	Color
209	749	352	2,851.1	621.57	480.3	94	23.5	Blue

Assay Class: High Sensitivity DNA Assay  
 Data Path: C:\...ents and Settings\Bioanalyzer\2012-08-24\2012-08-24\_002.xad

Created: 8/24/2012 2:55:18 PM  
 Modified: 8/24/2012 3:40:06 PM

**Electropherogram Summary Continued ...**



**Overall Results for sample 9 : 2012L\_SAGA\_106\_15xPCR\_NoShear**

Number of peaks found: 5                      Corr. Area 1: 644.5  
 Noise: 0.1

**Peak table for sample 9 : 2012L\_SAGA\_106\_15xPCR\_NoShear**

Peak	Size [bp]	Conc. [pg/μl]	Molarity [pmol/l]	Observations
1	35	125.00	5,411.3	Lower Marker
2	128	18.85	223.7	
3	328	339.99	1,569.7	
4	342	67.44	298.7	
5	355	410.53	1,750.1	
6	565	4.99	13.4	
7	10,380	75.00	10.9	Upper Marker

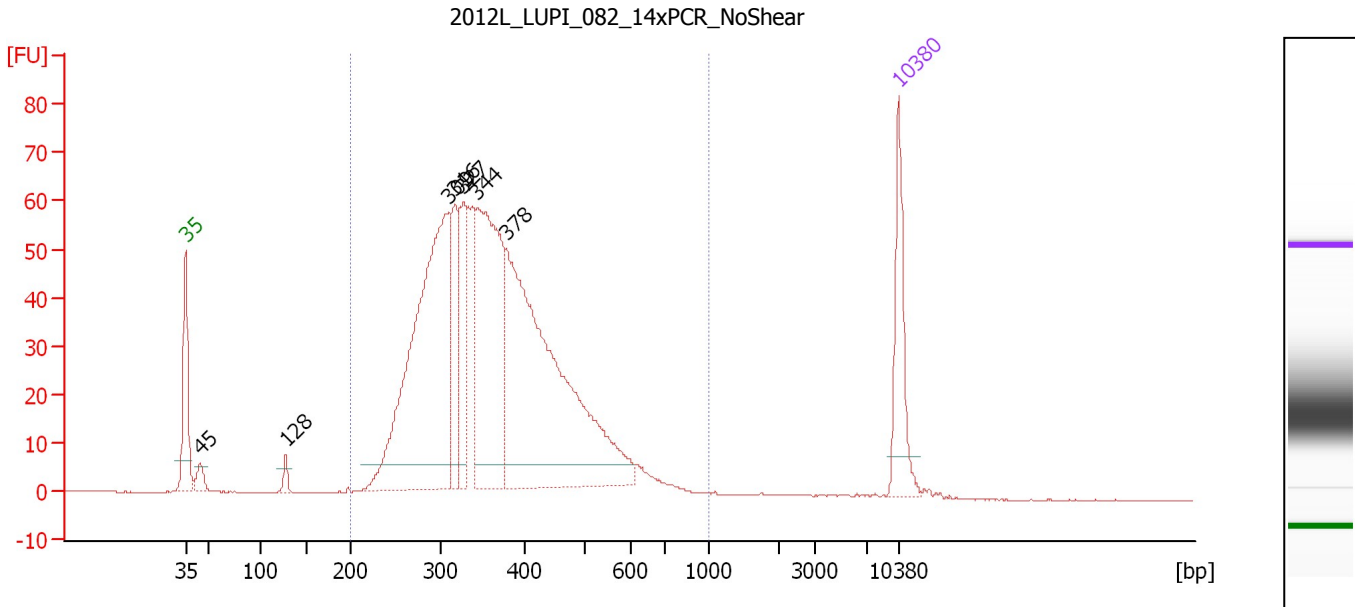
**Region table for sample 9 : 2012L\_SAGA\_106\_15xPCR\_NoShear**

From [bp]	To [bp]	Average Size [bp]	Molarity [pmol/l]	Conc. [pg/μl]	Corr. Area	% of Total	Size distribution in CV [%]	Color
242	674	370	4,427.4	1,035.26	644.5	95	19.6	Blue

Assay Class: High Sensitivity DNA Assay  
 Data Path: C:\...ents and Settings\Bioanalyzer\2012-08-24\2012-08-24\_002.xad

Created: 8/24/2012 2:55:18 PM  
 Modified: 8/24/2012 3:40:06 PM

**Electropherogram Summary Continued ...**



**Overall Results for sample 10 : 2012L\_LUPI\_082\_14xPCR\_NoShear**

Number of peaks found: 7      Corr. Area 1: 1,176.9  
 Noise: 0.1

**Peak table for sample 10 : 2012L\_LUPI\_082\_14xPCR\_NoShear**

Peak	Size [bp]	Conc. [pg/μl]	Molarity [pmol/l]	Observations
1	35	125.00	5,411.3	Lower Marker
2	45	23.08	778.0	
3	128	14.83	175.8	
4	309	565.13	2,773.4	
5	316	93.54	448.0	
6	327	106.29	493.1	
7	344	350.97	1,546.7	
8	378	599.17	2,400.1	
9	10,380	75.00	10.9	Upper Marker

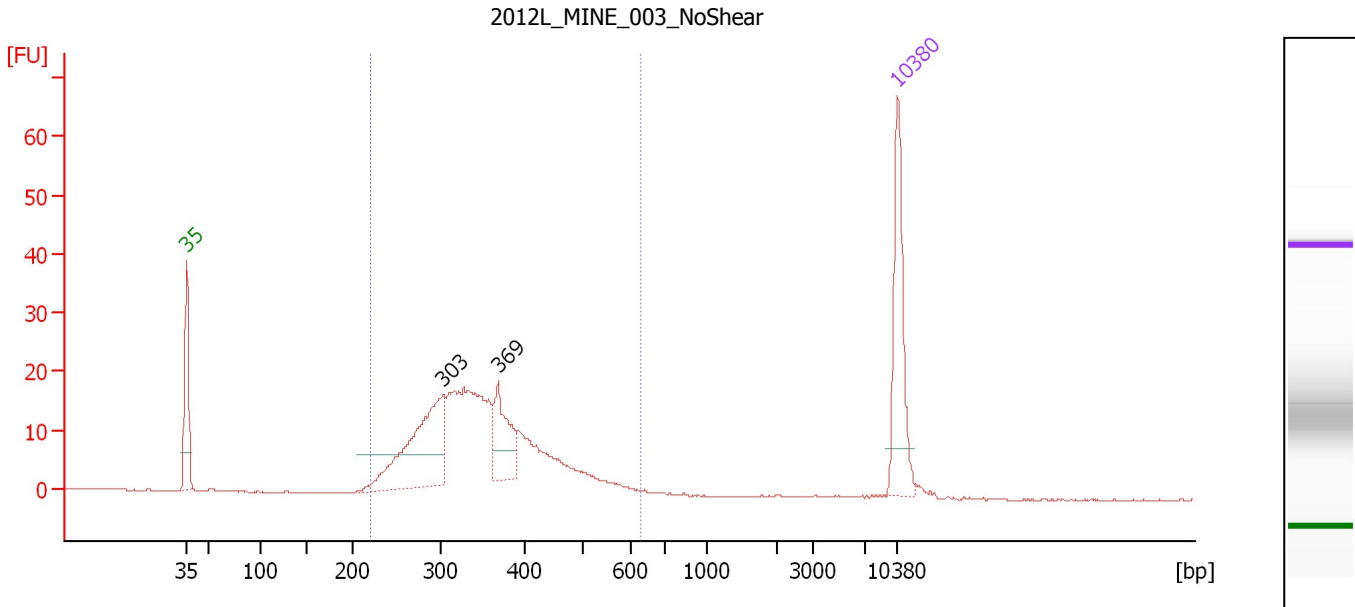
**Region table for sample 10 : 2012L\_LUPI\_082\_14xPCR\_NoShear**

From [bp]	To [bp]	Average Size [bp]	Molarity [pmol/l]	Conc. [pg/μl]	Corr. Area	% of Total	Size distribution in CV [%]	Color
200	1,000	371	8,485.9	1,935.58	1,176.9	97	24.8	Blue

Assay Class: High Sensitivity DNA Assay  
 Data Path: C:\...ents and Settings\Bioanalyzer\2012-08-24\2012-08-24\_002.xad

Created: 8/24/2012 2:55:18 PM  
 Modified: 8/24/2012 3:40:06 PM

**Electropherogram Summary Continued ...**



**Overall Results for sample 11 : 2012L\_MINE\_003\_NoShear**

Number of peaks found: 2                      Corr. Area 1: 308.2  
 Noise: 0.1

**Peak table for sample 11 : 2012L\_MINE\_003\_NoShear**

Peak	Size [bp]	Conc. [pg/μl]	Molarity [pmol/l]	Observations
1	35	125.00	5,411.3	Lower Marker
2	303	159.10	795.3	
3	369	60.09	246.7	
4	10,380	75.00	10.9	Upper Marker

**Region table for sample 11 : 2012L\_MINE\_003\_NoShear**

From [bp]	To [bp]	Average Size [bp]	Molarity [pmol/l]	Conc. [pg/μl]	Corr. Area	% of Total	Size distribution in CV [%]	Color
221	628	353	2,547.5	561.87	308.2	98	20.7	Blue

Assay Class: High Sensitivity DNA Assay  
Data Path: C:\...ents and Settings\Bioanalyzer\2012-08-24\2012-08-24\_002.xad

Created: 8/24/2012 2:55:18 PM  
Modified: 8/24/2012 3:40:06 PM

**Gel Image**