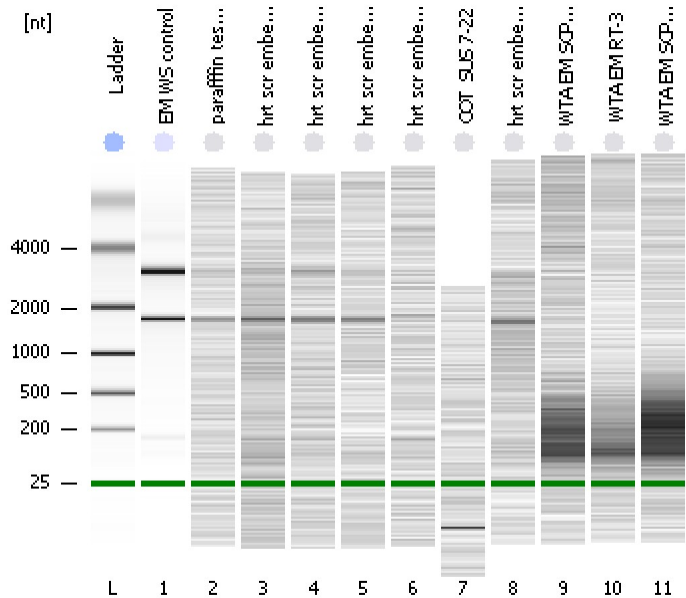


Assay Class: Eukaryote Total RNA Pico
Data Path: C:\...ents and Settings\Bioanalyzer\2012-08-24\2012-08-24_003.xad

Created: 8/24/2012 4:44:36 PM
Modified: 8/24/2012 5:35:43 PM

Electrophoresis File Run Summary

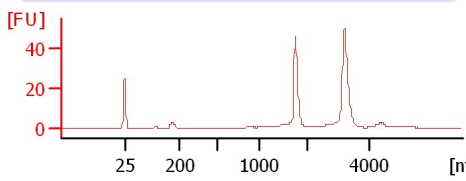


Instrument Information:
 Instrument Name: DE13701086 Firmware: C.01.069
 Serial#: DE13701086 Type: G2938B

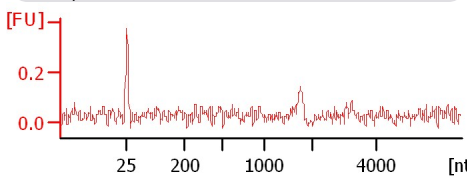
Assay Information:
 Assay Origin Path: C:\Program Files\Agilent\2100 bioanalyzer\2100 expert\assays\RNA\Eukaryote Total RNA Pico Series II.xsy
 Assay Class: Eukaryote Total RNA Pico
 Version: 2.6
 Assay Comments: Total RNA Analysis pg sensitivity (Eukaryote)
 © Copyright 2003 - 2009 Agilent Technologies, Inc.

Chip Information:
 Chip Lot #: Reagent Kit Lot #: Chip Comments:

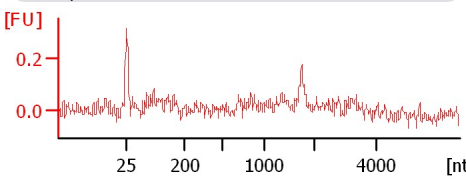
EM WS control
RIN: 9.60



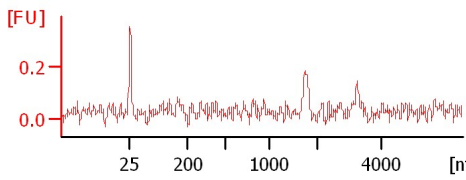
paraffin test lot#1205104
RIN N/A



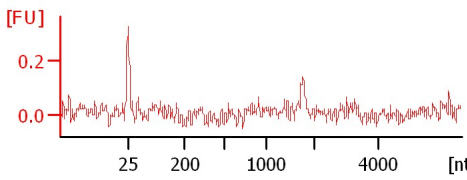
hrt scr embed 8/13
RIN N/A



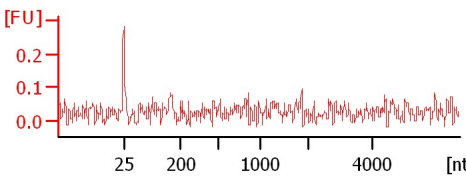
hrt scr embed 8/17
RIN N/A



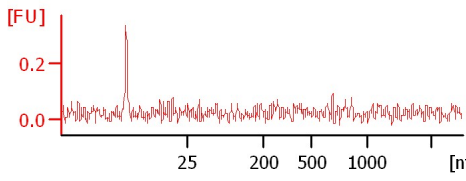
hrt scr embed 8/10
RIN N/A



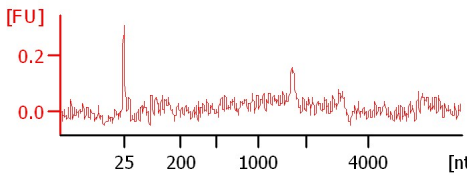
hrt scr embed 8/14
RIN N/A



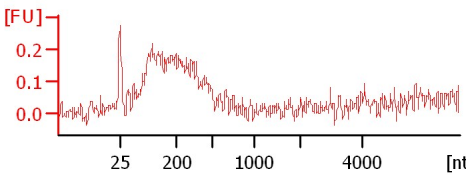
COT_SUS 7-22
RIN N/A



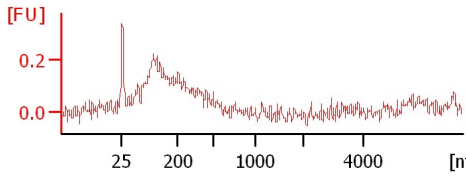
hrt scr embed 8/20
RIN N/A



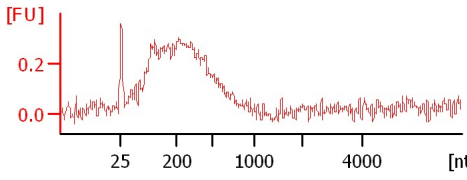
WTA EM SCPY-3
RIN N/A



WTA EM RT-3
RIN N/A



WTA EM SCPY-2
RIN N/A



Assay Class: Eukaryote Total RNA Pico
Data Path: C:\...ents and Settings\Bioanalyzer\2012-08-24\2012-08-24_003.xad

Created: 8/24/2012 4:44:36 PM
Modified: 8/24/2012 5:35:43 PM

Electrophoresis File Run Summary (Chip Summary)

Sample Name	Sample Comment	Status	Result Label	Result Color
EM WS control		✓	RIN: 9.60	
paraffin test lot#1205104		✓	RIN N/A	
hrt scr embed 8/13		✓	RIN N/A	
hrt scr embed 8/17		✓	RIN N/A	
hrt scr embed 8/10		✓	RIN N/A	
hrt scr embed 8/14		✓	RIN N/A	
COT_SUS 7-22		✓	RIN N/A	
hrt scr embed 8/20		✓	RIN N/A	
WTA EM SCPY-3		✓	RIN N/A	
WTA EM RT-3		✓	RIN N/A	
WTA EM SCPY-2		✓	RIN N/A	
Ladder		✓	All Other Samples	

Chip Lot #

Reagent Kit Lot #

Chip Comments :

Assay Class: Eukaryote Total RNA Pico
Data Path: C:\...ents and Settings\Bioanalyzer\2012-08-24\2012-08-24_003.xad

Created: 8/24/2012 4:44:36 PM
Modified: 8/24/2012 5:35:43 PM

Electrophoresis Assay Details

General Analysis Settings

Number of Available Sample and Ladder Wells (Max.) : 12
Minimum Visible Range [s] : 17
Maximum Visible Range [s] : 70
Start Analysis Time Range [s] : 18
End Analysis Time Range [s] : 69
Ladder Concentration [pg/μl] : 1000
Lower Marker Concentration [pg/μl] : 0
Upper Marker Concentration [pg/μl] : 0
Used Lower Marker for Quantitation
Standard Curve Fit is Logarithmic
Show Data Aligned to Lower Marker

Integrator Settings

Integration Start Time [s] : 18
Integration End Time [s] : 69
Slope Threshold : 0.6
Height Threshold [FU] : 0.5
Area Threshold : 0.2
Width Threshold [s] : 0.3
Baseline Plateau [s] : 6

Filter Settings

Filter Width [s] : 0.5
Polynomial Order : 4

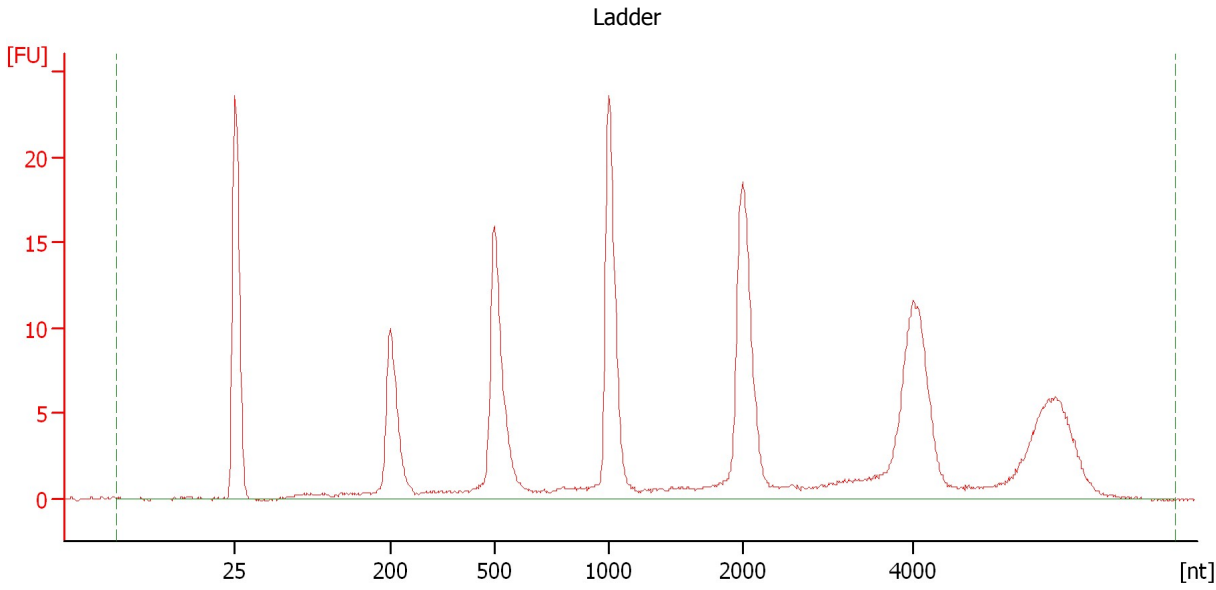
Ladder

Ladder Peak	Size
1	25
2	200
3	500
4	1000
5	2000
6	4000

Assay Class: Eukaryote Total RNA Pico
Data Path: C:\...ents and Settings\Bioanalyzer\2012-08-24\2012-08-24_003.xad

Created: 8/24/2012 4:44:36 PM
Modified: 8/24/2012 5:35:43 PM

Electropherogram Summary



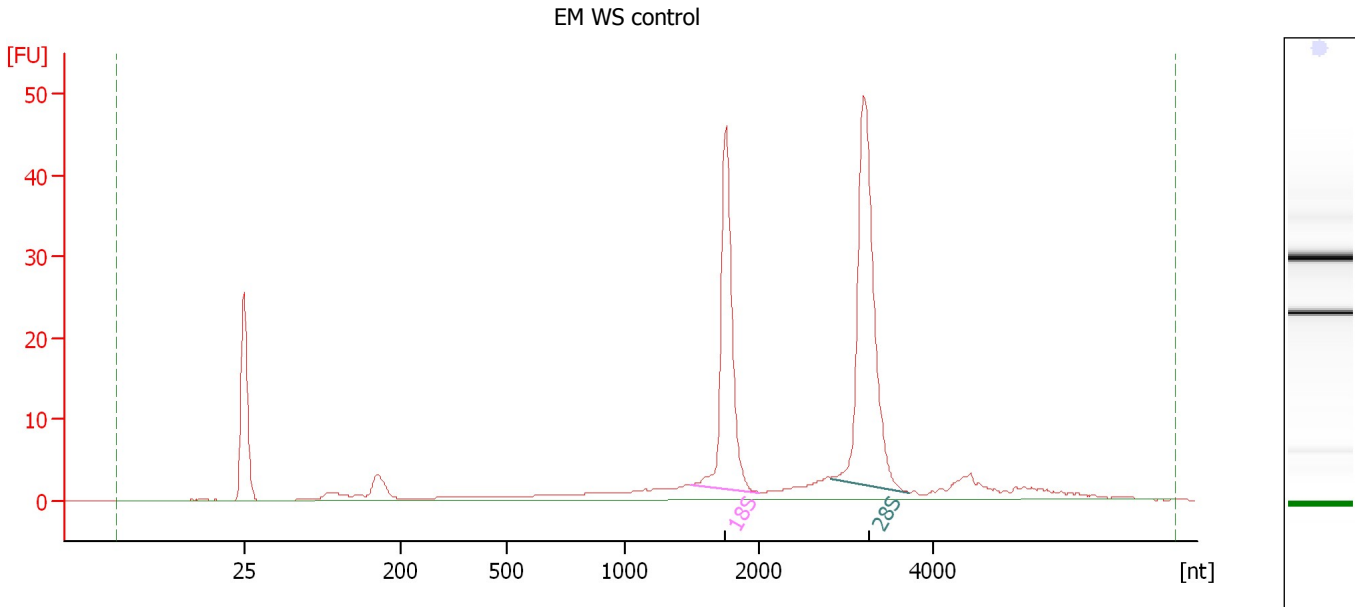
Overall Results for Ladder

RNA Area:	192.1	Result Flagging Color:	
RNA Concentration:	1,000 pg/μl	Result Flagging Label:	All Other Samples

Assay Class: Eukaryote Total RNA Pico
Data Path: C:\...ents and Settings\Bioanalyzer\2012-08-24\2012-08-24_003.xad

Created: 8/24/2012 4:44:36 PM
Modified: 8/24/2012 5:35:43 PM

Electropherogram Summary Continued ...



Overall Results for sample 1 : EM WS control

RNA Area: 212.3 RNA Integrity Number (RIN): 9.6 (B.02.08)
RNA Concentration: 1,105 µg/µl Result Flagging Color:
rRNA Ratio [28s / 18s]: 1.4 Result Flagging Label: RIN: 9.60

Fragment table for sample 1 : EM WS control

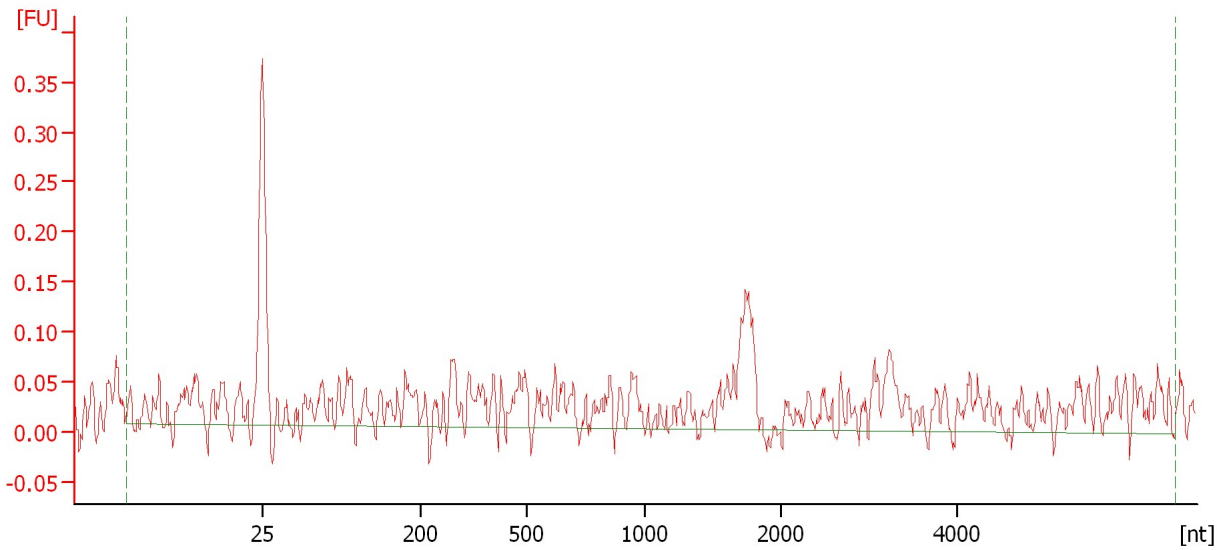
Name	Start Size [nt]	End Size [nt]	Area	% of total Area
18S	1,495	2,005	53.7	25.3
28S	2,829	3,727	75.4	35.5

Assay Class: Eukaryote Total RNA Pico
Data Path: C:\...ents and Settings\Bioanalyzer\2012-08-24\2012-08-24_003.xad

Created: 8/24/2012 4:44:36 PM
Modified: 8/24/2012 5:35:43 PM

Electropherogram Summary Continued ...

paraffin test lot#1205104



Setpoint Deviations for sample 2 : paraffin test lot#1205104

Height Threshold [FU] : 0.1 Area Threshold : 0.1

Overall Results for sample 2 : paraffin test lot#1205104

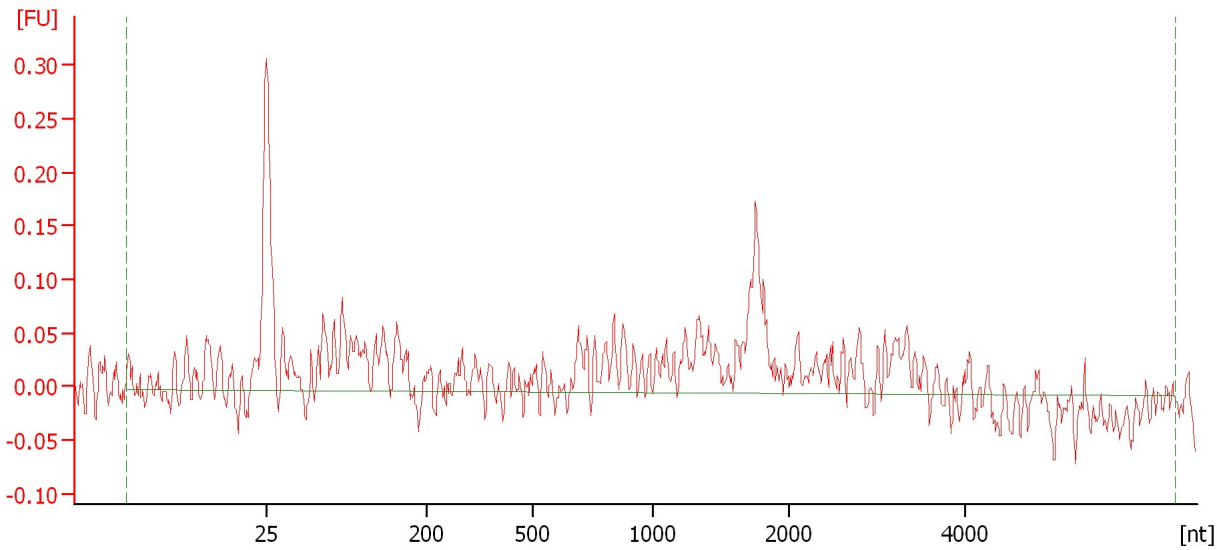
RNA Area:	2.7	Result Flagging Color:	<input type="checkbox"/>
RNA Concentration:	14 pg/μl	Result Flagging Label:	RIN N/A
rRNA Ratio [28s / 18s]:	0.0		

Assay Class: Eukaryote Total RNA Pico
Data Path: C:\...ents and Settings\Bioanalyzer\2012-08-24\2012-08-24_003.xad

Created: 8/24/2012 4:44:36 PM
Modified: 8/24/2012 5:35:43 PM

Electropherogram Summary Continued ...

hrt scr embed 8/13



Setpoint Deviations for sample 3 : hrt scr embed 8/13

Height Threshold [FU] : 0.1 Width Threshold [s] : 0.1
Area Threshold : 0.1

Overall Results for sample 3 : hrt scr embed 8/13

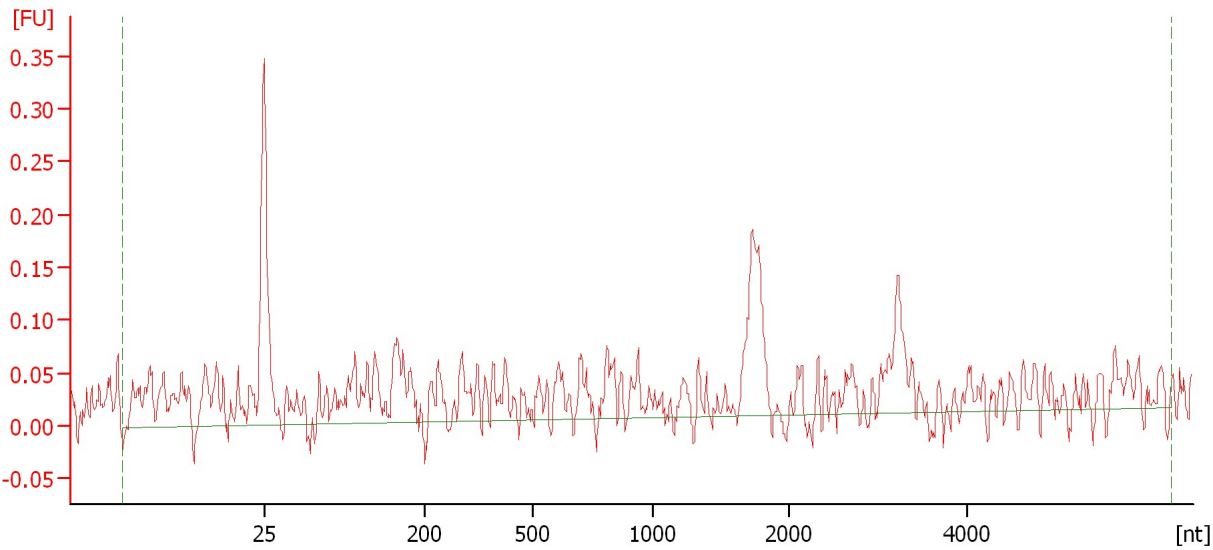
RNA Area: 2.4 Result Flagging Color:
RNA Concentration: 12 pg/μl Result Flagging Label: RIN N/A
rRNA Ratio [28s / 18s]: 0.0

Assay Class: Eukaryote Total RNA Pico
Data Path: C:\...ents and Settings\Bioanalyzer\2012-08-24\2012-08-24_003.xad

Created: 8/24/2012 4:44:36 PM
Modified: 8/24/2012 5:35:43 PM

Electropherogram Summary Continued ...

hrt scr embed 8/17



Setpoint Deviations for sample 4 : hrt scr embed 8/17

Height Threshold [FU] : 0.1 Area Threshold : 0.1

Overall Results for sample 4 : hrt scr embed 8/17

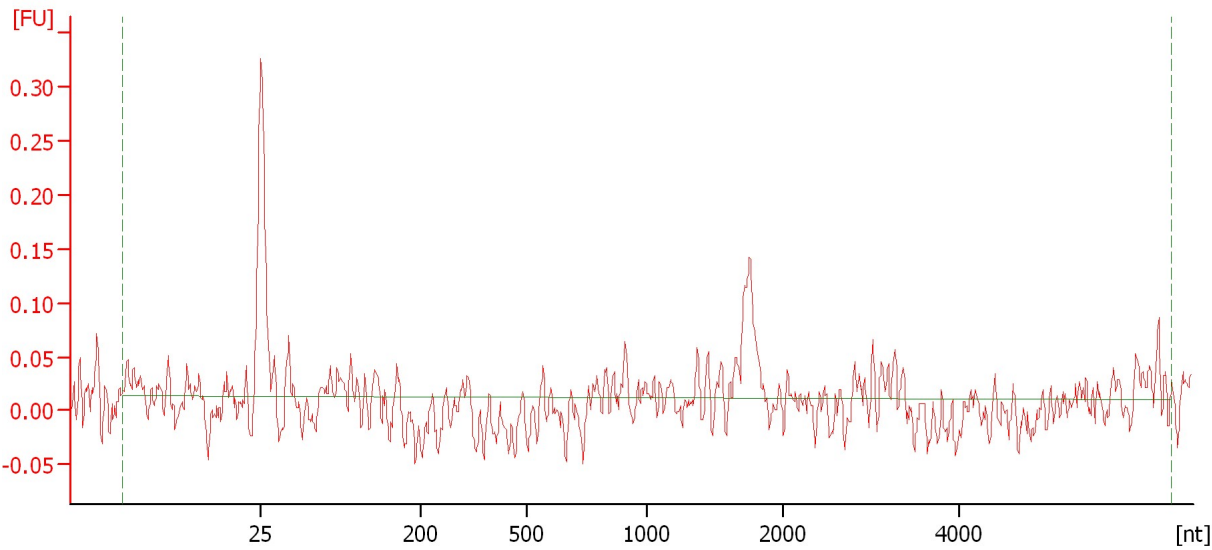
RNA Area:	3.0	Result Flagging Color:	
RNA Concentration:	16 pg/μl	Result Flagging Label:	RIN N/A
rRNA Ratio [28s / 18s]:	0.0		

Assay Class: Eukaryote Total RNA Pico
Data Path: C:\...ents and Settings\Bioanalyzer\2012-08-24\2012-08-24_003.xad

Created: 8/24/2012 4:44:36 PM
Modified: 8/24/2012 5:35:43 PM

Electropherogram Summary Continued ...

hrt scr embed 8/10



Setpoint Deviations for sample 5 : hrt scr embed 8/10

Height Threshold [FU] : 0.1 Area Threshold : 0.1

Overall Results for sample 5 : hrt scr embed 8/10

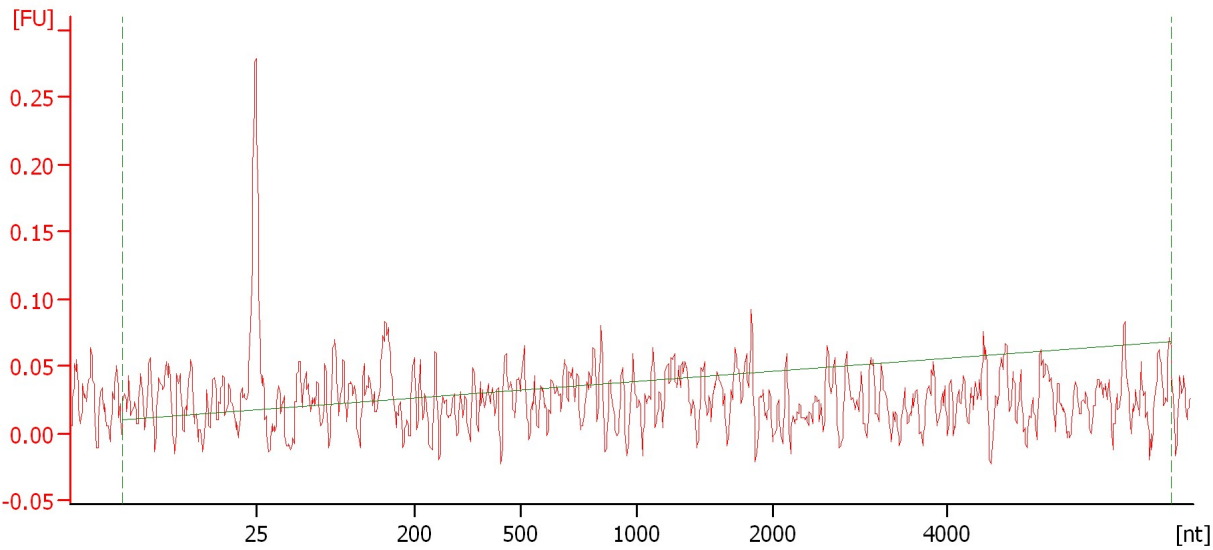
RNA Area:	0.9	Result Flagging Color:	<input type="checkbox"/>
RNA Concentration:	4 pg/μl	Result Flagging Label:	RIN N/A
rRNA Ratio [28s / 18s]:	0.0		

Assay Class: Eukaryote Total RNA Pico
Data Path: C:\...ents and Settings\Bioanalyzer\2012-08-24\2012-08-24_003.xad

Created: 8/24/2012 4:44:36 PM
Modified: 8/24/2012 5:35:43 PM

Electropherogram Summary Continued ...

hrt scr embed 8/14



Setpoint Deviations for sample 6 : hrt scr embed 8/14

Slope Threshold : 0.01 Area Threshold : 0.1
Height Threshold [FU] : 0.02

Overall Results for sample 6 : hrt scr embed 8/14

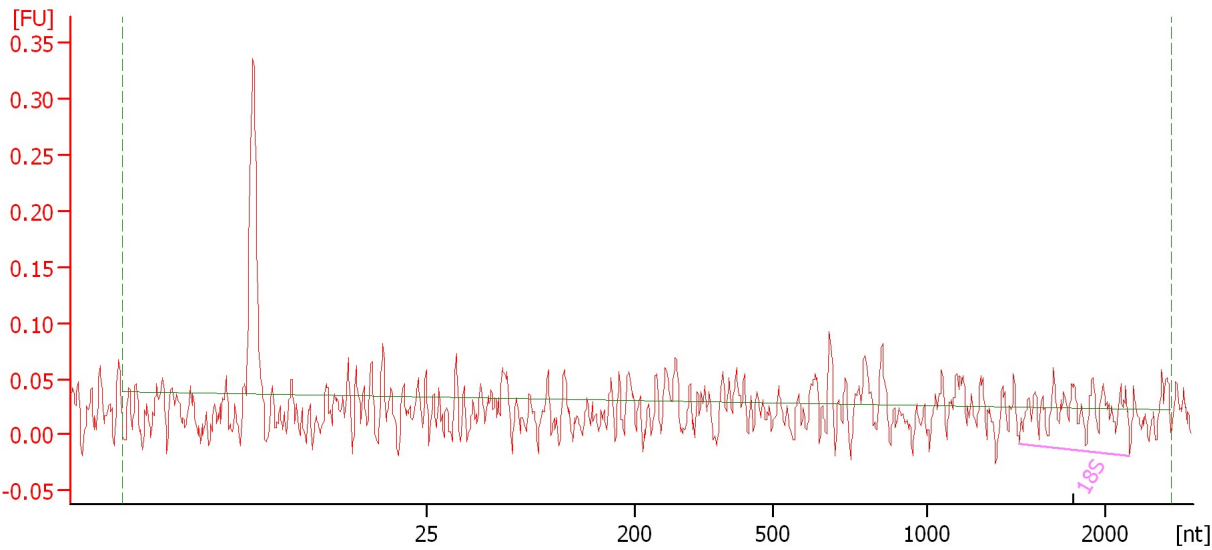
RNA Area: 0.7 Result Flagging Color:
RNA Concentration: 4 pg/μl Result Flagging Label: RIN N/A
rRNA Ratio [28s / 18s]: 0.0

Assay Class: Eukaryote Total RNA Pico
Data Path: C:\...ents and Settings\Bioanalyzer\2012-08-24\2012-08-24_003.xad

Created: 8/24/2012 4:44:36 PM
Modified: 8/24/2012 5:35:43 PM

Electropherogram Summary Continued ...

COT_SUS 7-22



Setpoint Deviations for sample 7 : COT_SUS 7-22

Slope Threshold : 0.1 Area Threshold : 0.1
Height Threshold [FU] : 0.01 Width Threshold [s] : 0.1

Overall Results for sample 7 : COT_SUS 7-22

RNA Area: 0.8 Result Flagging Color:
RNA Concentration: 4 pg/μl Result Flagging Label: RIN N/A
rRNA Ratio [28s / 18s]: 0.0

Fragment table for sample 7 : COT_SUS 7-22

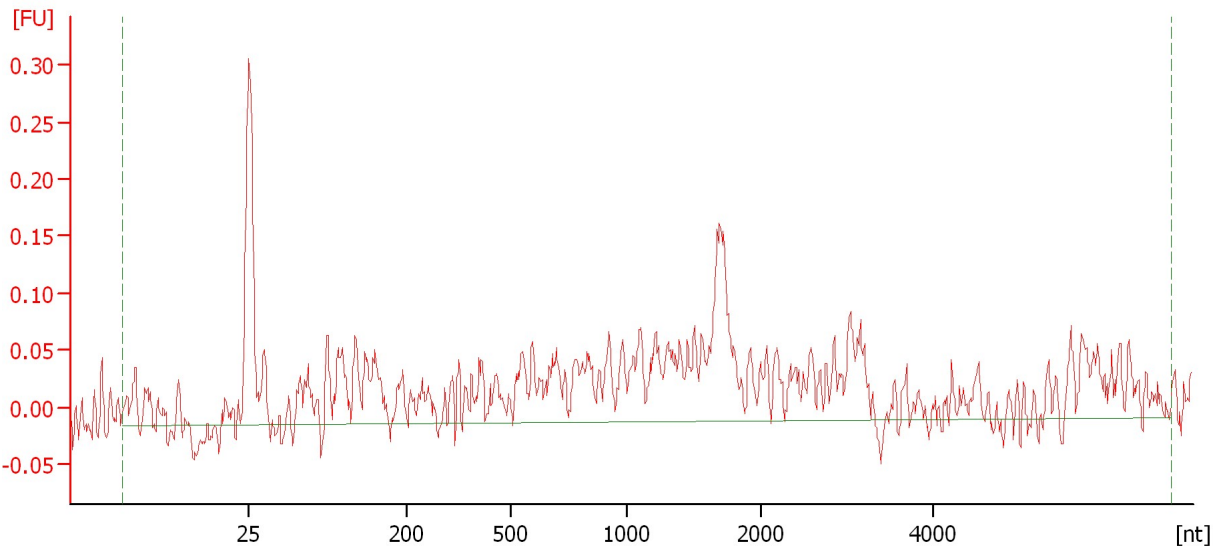
Name	Start Size [nt]	End Size [nt]	Area	% of total Area
18S	1,519	2,217	0.3	35.3

Assay Class: Eukaryote Total RNA Pico
Data Path: C:\...ents and Settings\Bioanalyzer\2012-08-24\2012-08-24_003.xad

Created: 8/24/2012 4:44:36 PM
Modified: 8/24/2012 5:35:43 PM

Electropherogram Summary Continued ...

hrt scr embed 8/20



Setpoint Deviations for sample 8 : hrt scr embed 8/20

Height Threshold [FU] : 0.05 Area Threshold : 0.1

Overall Results for sample 8 : hrt scr embed 8/20

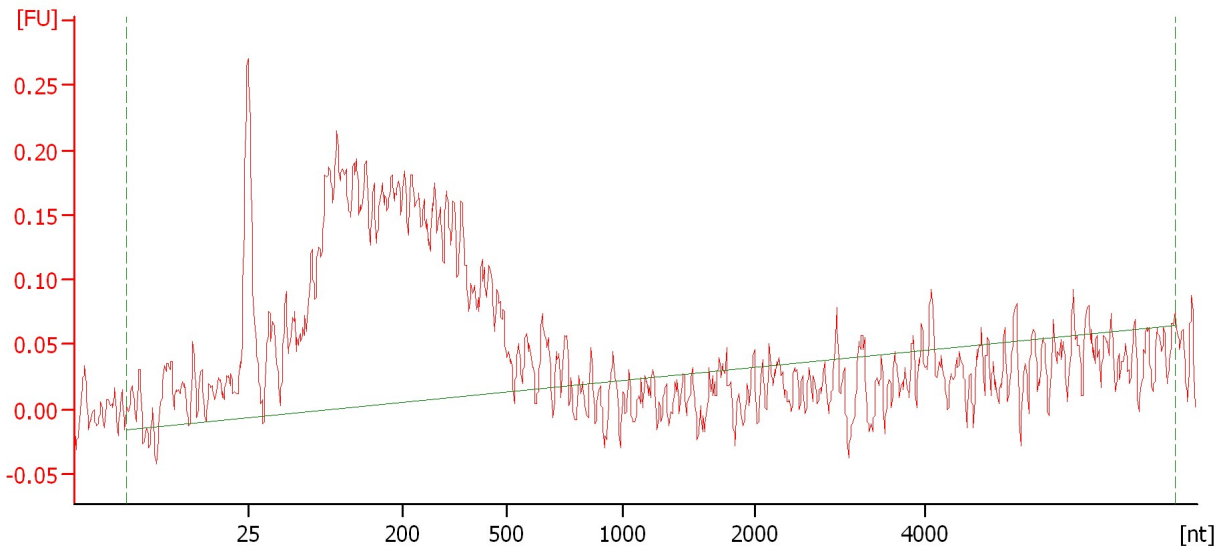
RNA Area:	3.5	Result Flagging Color:	<input type="checkbox"/>
RNA Concentration:	18 pg/μl	Result Flagging Label:	RIN N/A
rRNA Ratio [28s / 18s]:	0.0		

Assay Class: Eukaryote Total RNA Pico
Data Path: C:\...ents and Settings\Bioanalyzer\2012-08-24\2012-08-24_003.xad

Created: 8/24/2012 4:44:36 PM
Modified: 8/24/2012 5:35:43 PM

Electropherogram Summary Continued ...

WTA EM SCPY-3



Setpoint Deviations for sample 9 : WTA EM SCPY-3

Slope Threshold :	0.2	Area Threshold :	0.1
Height Threshold [FU] :	0.05		

Overall Results for sample 9 : WTA EM SCPY-3

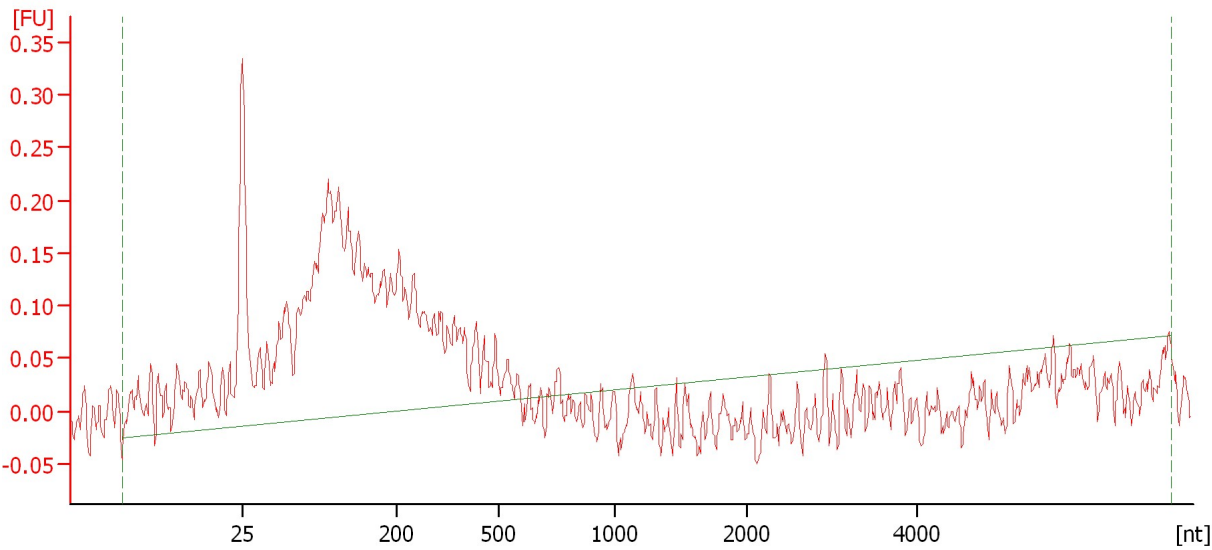
RNA Area:	5.2	Result Flagging Color:	<input type="checkbox"/>
RNA Concentration:	27 pg/μl	Result Flagging Label:	RIN N/A
rRNA Ratio [28s / 18s]:	0.0		

Assay Class: Eukaryote Total RNA Pico
Data Path: C:\...ents and Settings\Bioanalyzer\2012-08-24\2012-08-24_003.xad

Created: 8/24/2012 4:44:36 PM
Modified: 8/24/2012 5:35:43 PM

Electropherogram Summary Continued ...

WTA EM RT-3



Setpoint Deviations for sample 10 : WTA EM RT-3

Height Threshold [FU] : 0.1 Area Threshold : 0.1

Overall Results for sample 10 : WTA EM RT-3

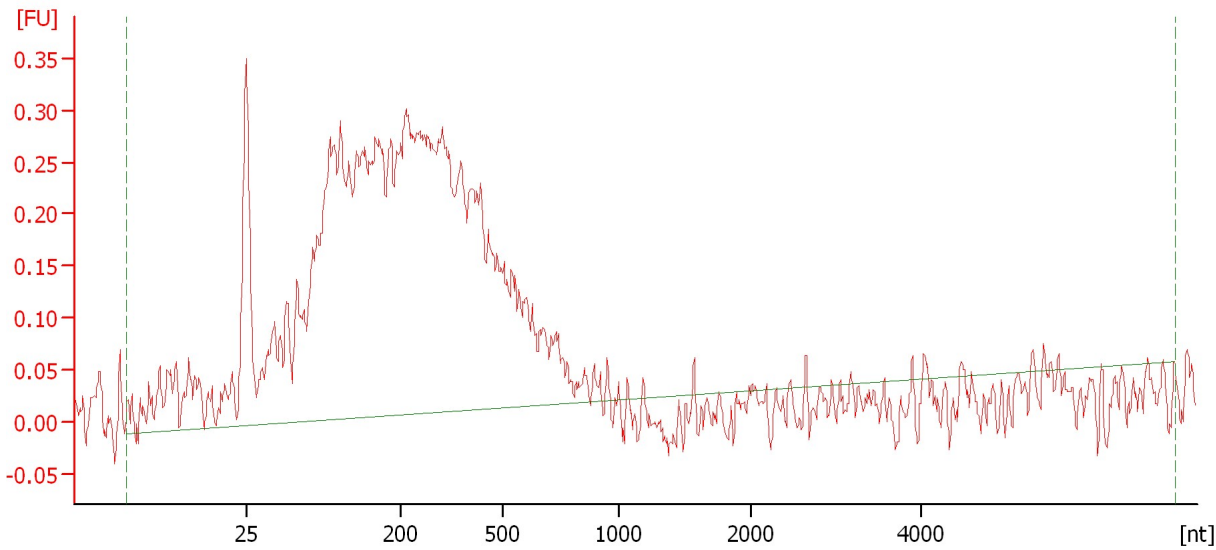
RNA Area:	4.8	Result Flagging Color:	
RNA Concentration:	25 pg/μl	Result Flagging Label:	RIN N/A
rRNA Ratio [28s / 18s]:	0.0		

Assay Class: Eukaryote Total RNA Pico
Data Path: C:\...ents and Settings\Bioanalyzer\2012-08-24\2012-08-24_003.xad

Created: 8/24/2012 4:44:36 PM
Modified: 8/24/2012 5:35:43 PM

Electropherogram Summary Continued ...

WTA EM SCPY-2



Setpoint Deviations for sample 11 : WTA EM SCPY-2

Height Threshold [FU] : 0.1 Area Threshold : 0.1

Overall Results for sample 11 : WTA EM SCPY-2

RNA Area:	8.8	Result Flagging Color:	<input type="checkbox"/>
RNA Concentration:	46 pg/μl	Result Flagging Label:	RIN N/A
rRNA Ratio [28s / 18s]:	0.0		

Assay Class: Eukaryote Total RNA Pico
Data Path: C:\...ents and Settings\Bioanalyzer\2012-08-24\2012-08-24_003.xad

Created: 8/24/2012 4:44:36 PM
Modified: 8/24/2012 5:35:43 PM

Gel Image

