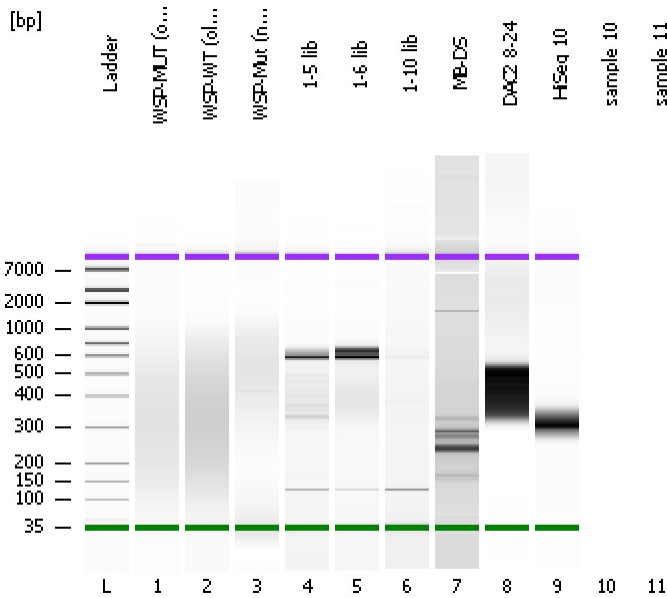


Assay Class: High Sensitivity DNA Assay
Data Path: C:\...ents and Settings\Bioanalyzer\2012-08-27\2012-08-27_001.xad

Created: 8/27/2012 9:38:37 AM
Modified: 8/27/2012 10:41:58 AM

Electrophoresis File Run Summary



Instrument Information:

Instrument Name: DE13701086 Firmware: C.01.069
Serial#: DE13701086 Type: G2938B

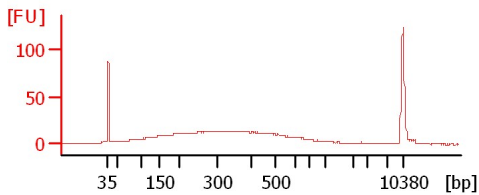
Assay Information:

Assay Origin Path: C:\Program Files\Agilent\2100 bioanalyzer\2100 expert\assays\dsDNA\High Sensitivity DNA.xsy
Assay Class: High Sensitivity DNA Assay
Version: 1.03
Assay Comments: Copyright © 2003-2010 Agilent Technologies

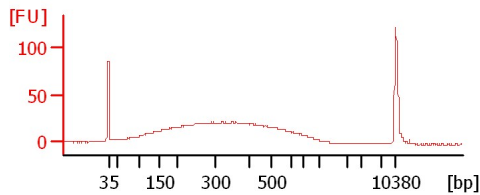
Chip Information:

Chip Lot #:
Reagent Kit Lot #:
Chip Comments:

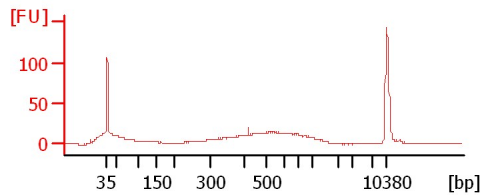
WSP-MUT (old) soni-9 cyc



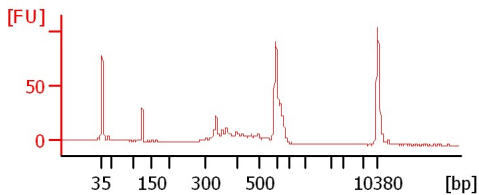
WSP-WT (old) soni-9 cyc



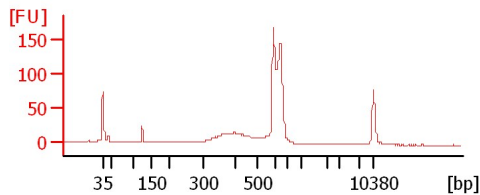
WSP-Mut (new)



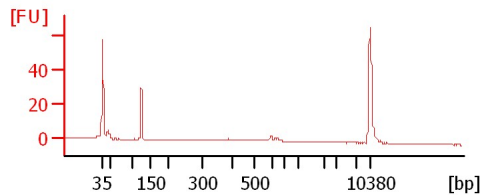
1-5 lib



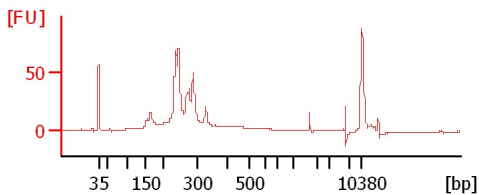
1-6 lib



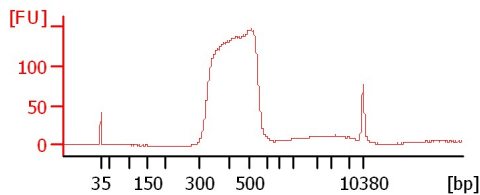
1-10 lib



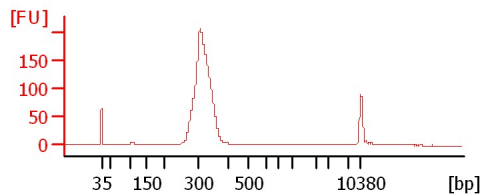
MB-DS



DAC2 8-24



HiSeq 10



Assay Class: High Sensitivity DNA Assay
 Data Path: C:\...ents and Settings\Bioanalyzer\2012-08-27\2012-08-27_001.xad

Created: 8/27/2012 9:38:37 AM
 Modified: 8/27/2012 10:41:58 AM

Electrophoresis File Run Summary (Chip Summary)

Sample Name	Sample Comment	Rest. Digest	Status	Observation	Result Label	Result Color
WSP-MUT (old) soni-9 cyc		<input type="checkbox"/>	✓			
WSP-WT (old) soni-9 cyc		<input type="checkbox"/>	✓			
WSP-Mut (new)		<input type="checkbox"/>	✓			
1-5 lib		<input type="checkbox"/>	✓			
1-6 lib		<input type="checkbox"/>	✓			
1-10 lib		<input type="checkbox"/>	✓			
MB-DS		<input type="checkbox"/>	✓			
DAC2 8-24		<input type="checkbox"/>	✓			
HiSeq 10		<input type="checkbox"/>	✓			
sample 10		<input type="checkbox"/>				
sample 11		<input type="checkbox"/>				
Ladder		<input type="checkbox"/>	✓			

Chip Lot #

Reagent Kit Lot #

Chip Comments :

Assay Class: High Sensitivity DNA Assay
Data Path: C:\...ents and Settings\Bioanalyzer\2012-08-27\2012-08-27_001.xad

Created: 8/27/2012 9:38:37 AM
Modified: 8/27/2012 10:41:58 AM

Electrophoresis Assay Details

General Analysis Settings

Number of Available Sample and Ladder Wells (Max.) : 12
Minimum Visible Range [s] : 32
Maximum Visible Range [s] : 138
Start Analysis Time Range [s] : 33
End Analysis Time Range [s] : 137.5
Ladder Concentration [pg/μl] : 1950
Uses Standard Area for Ladder Fragments
Lower Marker Concentration [pg/μl] : 125
Upper Marker Concentration [pg/μl] : 75
Used Upper Marker for Quantitation
Standard Curve Fit is Point to Point
Show Data Aligned to Lower and Upper Marker

Integrator Settings

Integration Start Time [s] : 33.05
Integration End Time [s] : 137
Slope Threshold : 0.8
Height Threshold [FU] : 5
Area Threshold : 0.1
Width Threshold [s] : 0.6
Baseline Plateau [s] : 0.5

Filter Settings

Filter Width [s] : 0.5
Polynomial Order : 4

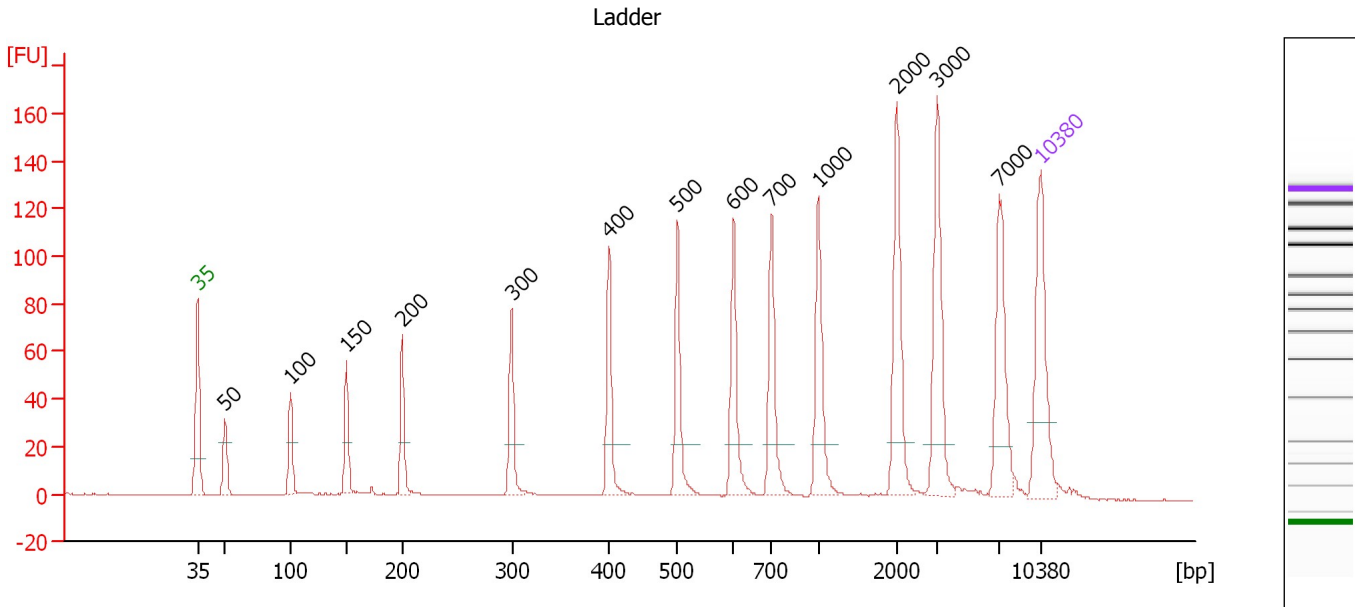
Ladder

Ladder Peak	Size	Area
1	35	160
2	50	210
3	100	208
4	150	221
5	200	242
6	300	270
7	400	305
8	500	306
9	600	336
10	700	321
11	1000	366
12	2000	413
13	3000	411
14	7000	400
15	10380	214

Assay Class: High Sensitivity DNA Assay
 Data Path: C:\...ents and Settings\Bioanalyzer\2012-08-27\2012-08-27_001.xad

Created: 8/27/2012 9:38:37 AM
 Modified: 8/27/2012 10:41:58 AM

Electropherogram Summary



Overall Results for Ladder

Noise: 0.2

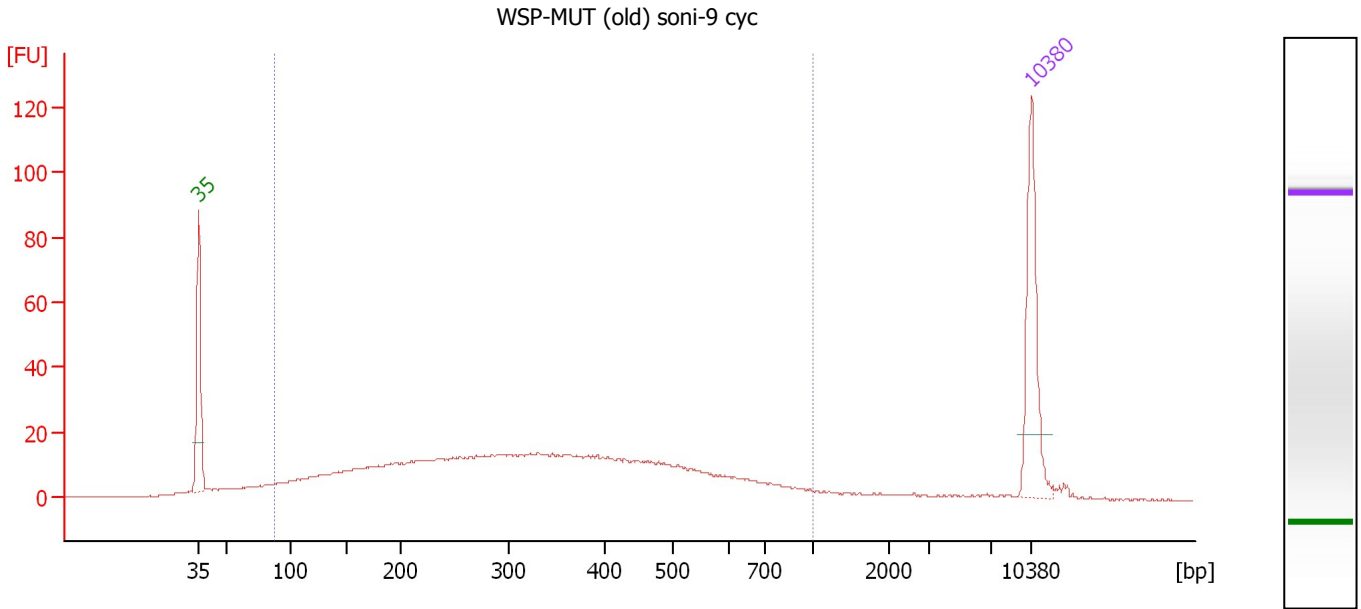
Peak table for Ladder

Peak	Size [bp]	Conc. [pg/μl]	Molarity [pmol/l]	Observations
1	35	125.00	5,411.3	Lower Marker
2	50	150.00	4,545.5	Ladder Peak
3	100	150.00	2,272.7	Ladder Peak
4	150	150.00	1,515.2	Ladder Peak
5	200	150.00	1,136.4	Ladder Peak
6	300	150.00	757.6	Ladder Peak
7	400	150.00	568.2	Ladder Peak
8	500	150.00	454.5	Ladder Peak
9	600	150.00	378.8	Ladder Peak
10	700	150.00	324.7	Ladder Peak
11	1,000	150.00	227.3	Ladder Peak
12	2,000	150.00	113.6	Ladder Peak
13	3,000	150.00	75.8	Ladder Peak
14	7,000	150.00	32.5	Ladder Peak
15	10,380	75.00	10.9	Upper Marker

Assay Class: High Sensitivity DNA Assay
 Data Path: C:\...ents and Settings\Bioanalyzer\2012-08-27\2012-08-27_001.xad

Created: 8/27/2012 9:38:37 AM
 Modified: 8/27/2012 10:41:58 AM

Electropherogram Summary Continued ...



Overall Results for sample 1 : WSP-MUT (old) soni-9 cyc

Number of peaks found: 0 Corr. Area 1: 657.1
 Noise: 0.2

Peak table for sample 1 : WSP-MUT (old) soni-9 cyc

Peak	Size [bp]	Conc. [pg/μl]	Molarity [pmol/l]	Observations
1	35	125.00	5,411.3	Lower Marker
2	10,380	75.00	10.9	Upper Marker

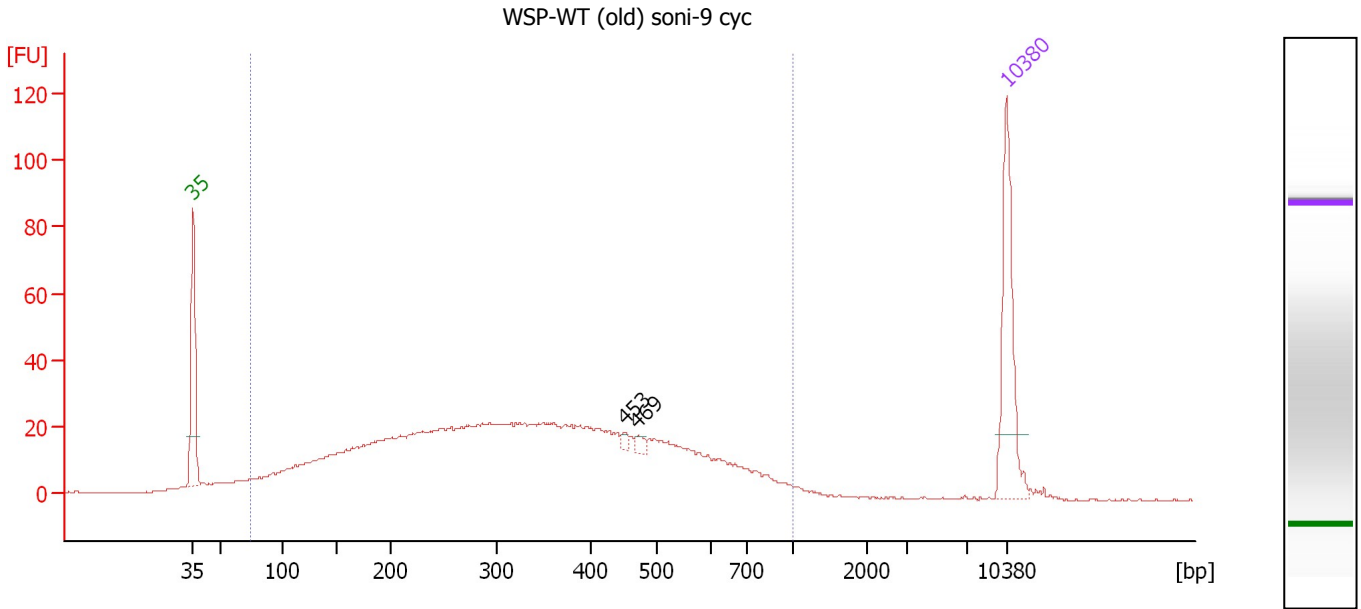
Region table for sample 1 : WSP-MUT (old) soni-9 cyc

From [bp]	To [bp]	Average Size [bp]	Molarity [pmol/l]	Conc. [pg/μl]	Corr. Area	% of Total	Size distribution in CV [%]	Color
88	1,000	349	4,697.8	747.91	657.1	89	47.4	Blue

Assay Class: High Sensitivity DNA Assay
 Data Path: C:\...ents and Settings\Bioanalyzer\2012-08-27\2012-08-27_001.xad

Created: 8/27/2012 9:38:37 AM
 Modified: 8/27/2012 10:41:58 AM

Electropherogram Summary Continued ...



Overall Results for sample 2 : WSP-WT (old) soni-9 cyc

Number of peaks found: 2 Corr. Area 1: 1,050.2
 Noise: 0.2

Peak table for sample 2 : WSP-WT (old) soni-9 cyc

Peak	Size [bp]	Conc. [pg/μl]	Molarity [pmol/l]	Observations
1	35	125.00	5,411.3	Lower Marker
2	453	4.36	14.6	
3	469	5.86	18.9	
4	10,380	75.00	10.9	Upper Marker

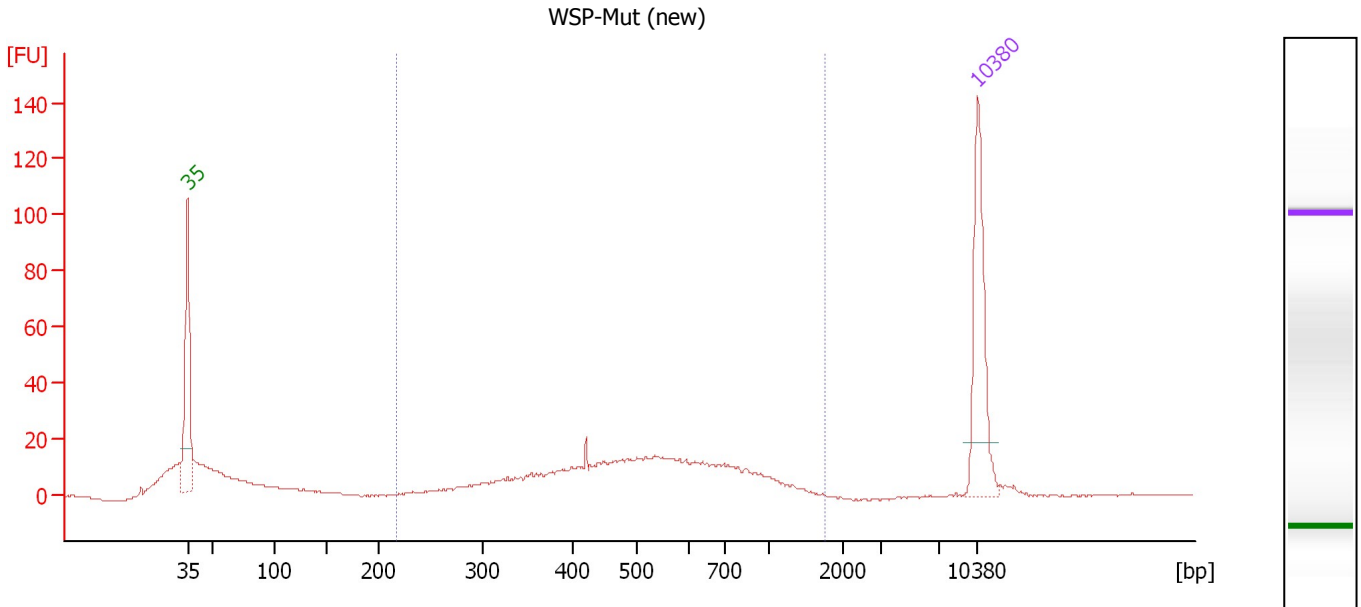
Region table for sample 2 : WSP-WT (old) soni-9 cyc

From [bp]	To [bp]	Average Size [bp]	Molarity [pmol/l]	Conc. [pg/μl]	Corr. Area	% of Total	Size distribution in CV [%]	Color
74	1,000	351	7,368.3	1,158.99	1,050.2	95	47.2	Blue

Assay Class: High Sensitivity DNA Assay
 Data Path: C:\...ents and Settings\Bioanalyzer\2012-08-27\2012-08-27_001.xad

Created: 8/27/2012 9:38:37 AM
 Modified: 8/27/2012 10:41:58 AM

Electropherogram Summary Continued ...



Setpoint Deviations for sample 3 : WSP-Mut (new)

Height Threshold [FU] : 30

Overall Results for sample 3 : WSP-Mut (new)

Number of peaks found: 0 Corr. Area 1: 348.1
 Noise: 0.2

Peak table for sample 3 : WSP-Mut (new)

Peak	Size [bp]	Conc. [pg/μl]	Molarity [pmol/l]	Observations
1	35	125.00	5,411.3	Lower Marker
2	10,380	75.00	10.9	Upper Marker

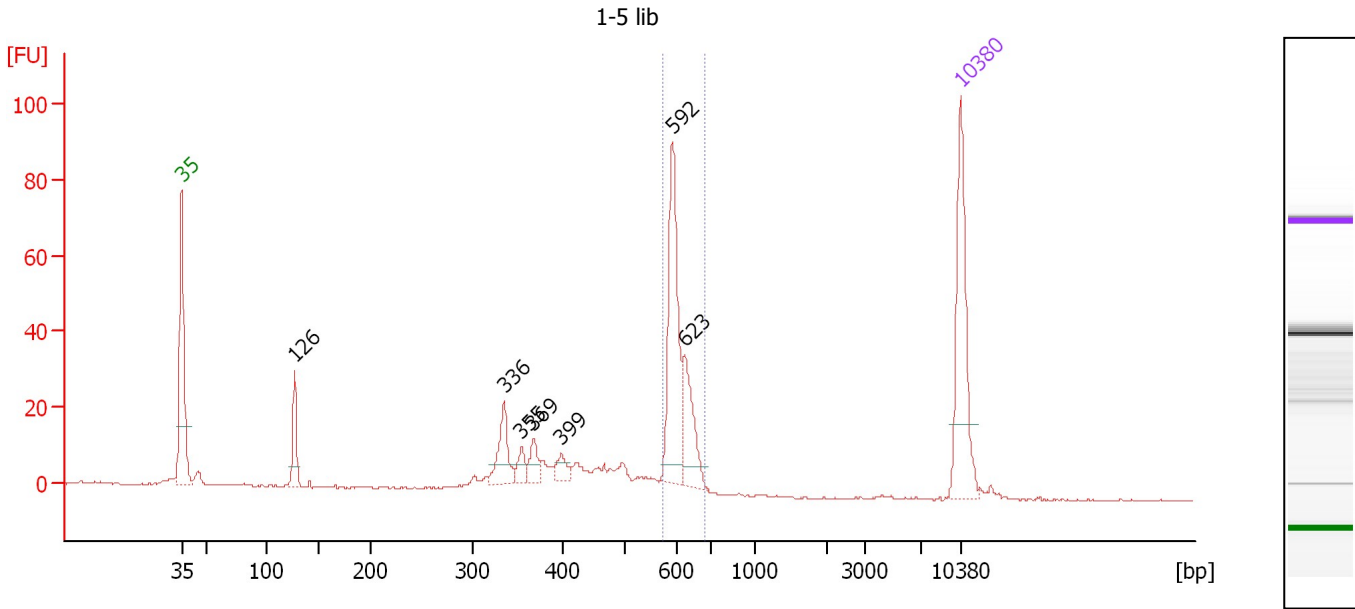
Region table for sample 3 : WSP-Mut (new)

From [bp]	To [bp]	Average Size [bp]	Molarity [pmol/l]	Conc. [pg/μl]	Corr. Area	% of Total	Size distribution in CV [%]	Color
217	1,769	554	876.4	266.64	348.1	64	40.9	Blue

Assay Class: High Sensitivity DNA Assay
 Data Path: C:\...ents and Settings\Bioanalyzer\2012-08-27\2012-08-27_001.xad

Created: 8/27/2012 9:38:37 AM
 Modified: 8/27/2012 10:41:58 AM

Electropherogram Summary Continued ...



Overall Results for sample 4 : 1-5 lib

Number of peaks found: 7 Corr. Area 1: 155.9
 Noise: 0.2

Peak table for sample 4 : 1-5 lib

Peak	Size [bp]	Conc. [pg/μl]	Molarity [pmol/l]	Observations
1	35	125.00	5,411.3	Lower Marker
2	126	37.58	450.2	
3	336	36.88	166.5	
4	355	12.36	52.7	
5	369	15.69	64.5	
6	399	11.65	44.2	
7	592	109.47	280.3	
8	623	46.48	113.1	
9	10,380	75.00	10.9	Upper Marker

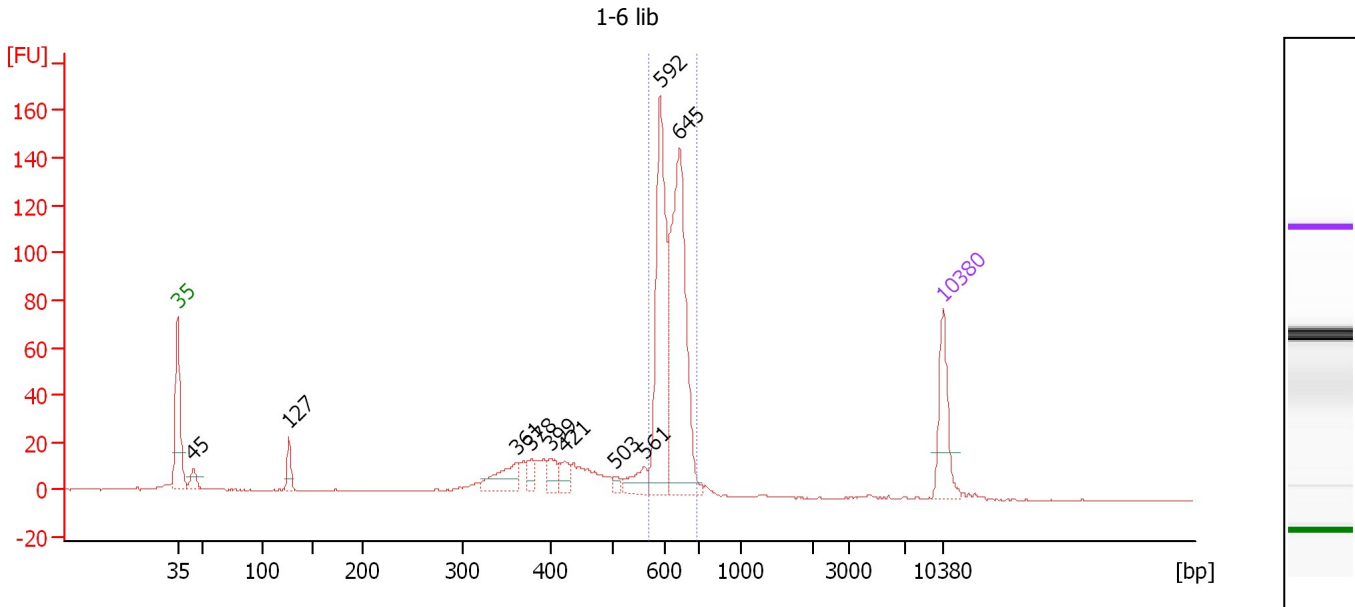
Region table for sample 4 : 1-5 lib

From [bp]	To [bp]	Average Size [bp]	Molarity [pmol/l]	Conc. [pg/μl]	Corr. Area	% of Total	Size distribution in CV [%]	Color
572	683	608	409.5	164.02	155.9	46	3.8	Blue

Assay Class: High Sensitivity DNA Assay
 Data Path: C:\...ents and Settings\Bioanalyzer\2012-08-27\2012-08-27_001.xad

Created: 8/27/2012 9:38:37 AM
 Modified: 8/27/2012 10:41:58 AM

Electropherogram Summary Continued ...



Overall Results for sample 5 : 1-6 lib

Number of peaks found: 10 Corr. Area 1: 470.6
 Noise: 0.2

Peak table for sample 5 : 1-6 lib

Peak	Size [bp]	Conc. [pg/μl]	Molarity [pmol/l]	Observations
1	35	125.00	5,411.3	Lower Marker
2	45	28.53	966.6	
3	127	34.47	412.2	
4	361	62.73	263.5	
5	378	20.58	82.6	
6	399	30.78	117.0	
7	421	26.64	95.8	
8	503	9.91	29.9	
9	561	33.74	91.1	
10	592	290.14	742.8	
11	645	378.23	888.2	
12	10,380	75.00	10.9	Upper Marker

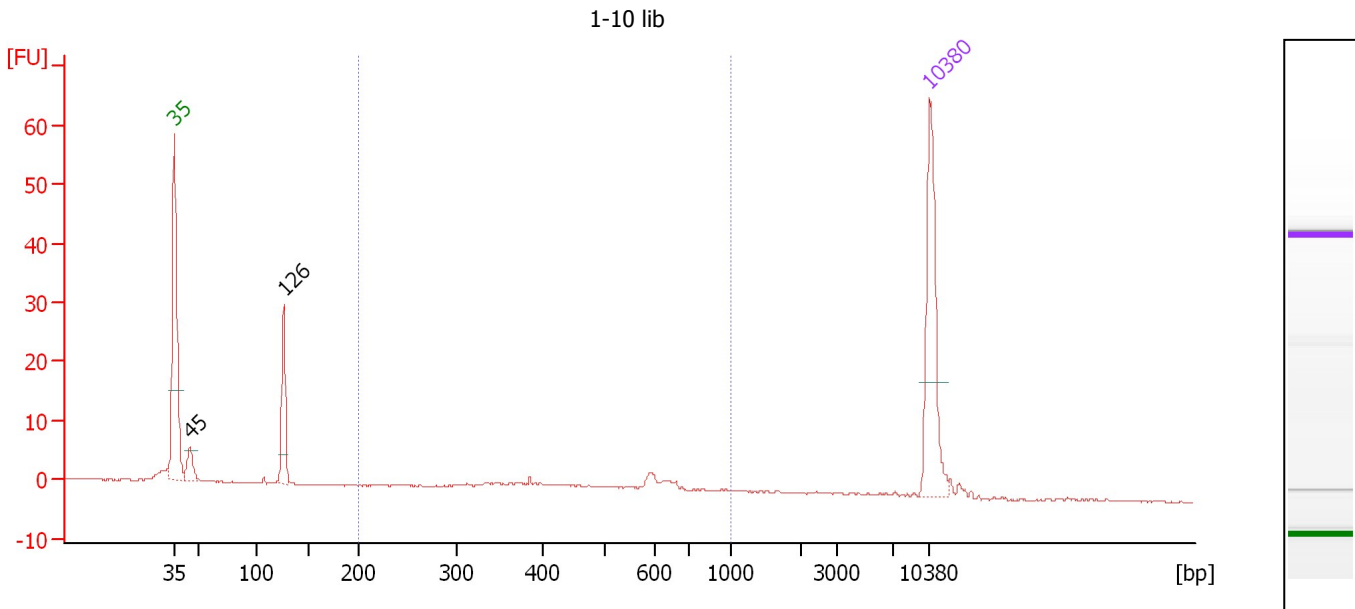
Region table for sample 5 : 1-6 lib

From [bp]	To [bp]	Average Size [bp]	Molarity [pmol/l]	Conc. [pg/μl]	Corr. Area	% of Total	Size distribution in CV [%]	Color
571	697	622	1,623.1	665.15	470.6	62	4.6	Blue

Assay Class: High Sensitivity DNA Assay
 Data Path: C:\...ents and Settings\Bioanalyzer\2012-08-27\2012-08-27_001.xad

Created: 8/27/2012 9:38:37 AM
 Modified: 8/27/2012 10:41:58 AM

Electropherogram Summary Continued ...



Overall Results for sample 6 : 1-10 lib

Number of peaks found: 2 Corr. Area 1: 24.5
 Noise: 0.1

Peak table for sample 6 : 1-10 lib

Peak	Size [bp]	Conc. [pg/μl]	Molarity [pmol/l]	Observations
1	35	125.00	5,411.3	Lower Marker
2	45	22.51	766.1	
3	126	55.58	668.0	
4	10,380	75.00	10.9	Upper Marker

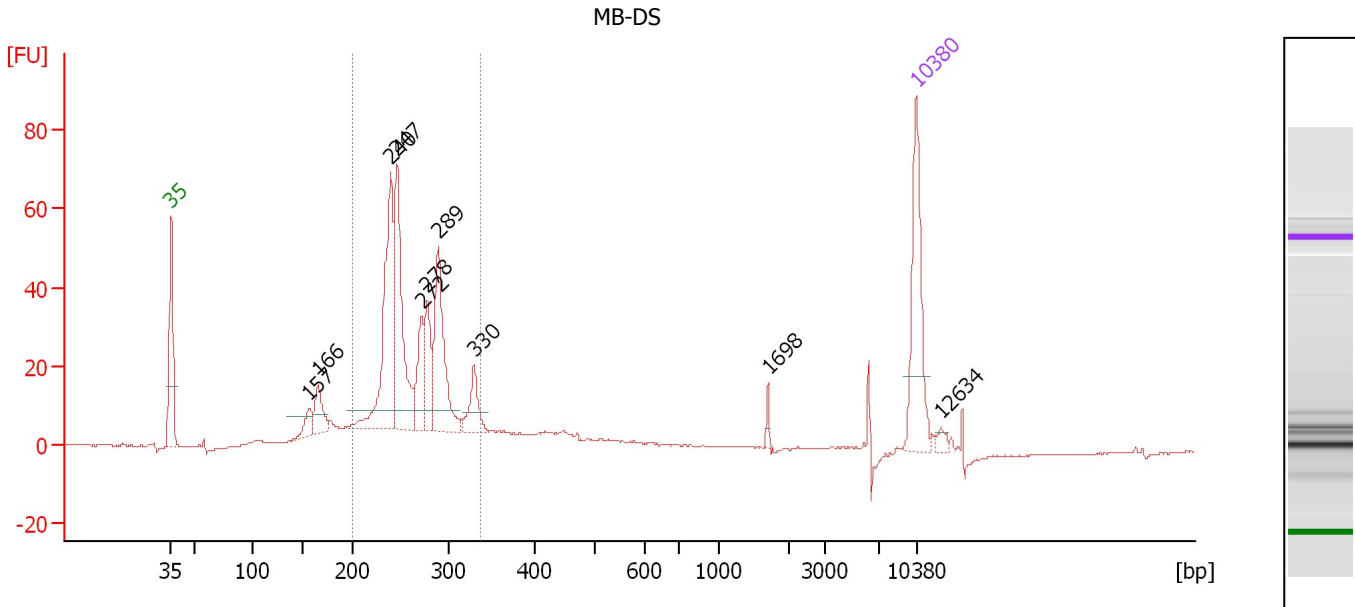
Region table for sample 6 : 1-10 lib

From [bp]	To [bp]	Average Size [bp]	Molarity [pmol/l]	Conc. [pg/μl]	Corr. Area	% of Total	Size distribution in CV [%]	Color
200	1,000	516	139.1	42.23	24.5	34	28.8	Blue

Assay Class: High Sensitivity DNA Assay
 Data Path: C:\...ents and Settings\Bioanalyzer\2012-08-27\2012-08-27_001.xad

Created: 8/27/2012 9:38:37 AM
 Modified: 8/27/2012 10:41:58 AM

Electropherogram Summary Continued ...



Overall Results for sample 7 : MB-DS

Number of peaks found: 10 Corr. Area 1: 432.4
 Noise: 0.2

Peak table for sample 7 : MB-DS

Peak	Size [bp]	Conc. [pg/μl]	Molarity [pmol/l]	Observations
1	35	125.00	5,411.3	Lower Marker
2	157	20.65	199.7	
3	166	33.95	310.3	
4	240	167.91	1,060.2	
5	247	145.82	896.0	
6	272	49.04	273.2	
7	278	48.16	262.5	
8	289	108.18	567.0	
9	330	32.45	149.1	
10	1,698	4.68	4.2	
11	10,380	75.00	10.9	Upper Marker
12	12,634	0.00	0.0	

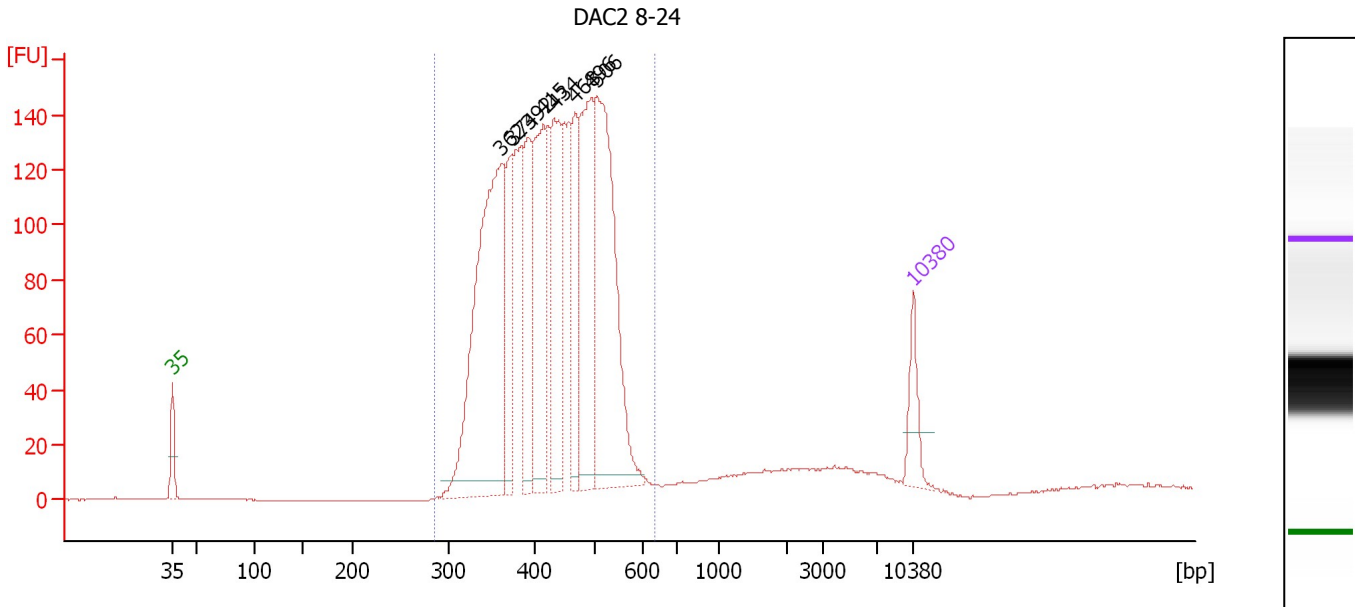
Region table for sample 7 : MB-DS

From [bp]	To [bp]	Average Size [bp]	Molarity [pmol/l]	Conc. [pg/μl]	Corr. Area	% of Total	Size distribution in CV [%]	Color
200	337	264	3,901.3	674.78	432.4	72	11.5	Blue

Assay Class: High Sensitivity DNA Assay
 Data Path: C:\...ents and Settings\Bioanalyzer\2012-08-27\2012-08-27_001.xad

Created: 8/27/2012 9:38:37 AM
 Modified: 8/27/2012 10:41:58 AM

Electropherogram Summary Continued ...



Overall Results for sample 8 : DAC2 8-24

Number of peaks found: 8 Corr. Area 1: 2,363.0
 Noise: 0.1

Peak table for sample 8 : DAC2 8-24

Peak	Size [bp]	Conc. [pg/μl]	Molarity [pmol/l]	Observations
1	35	125.00	5,411.3	Lower Marker
2	362	1,022.34	4,280.1	
3	374	224.41	909.8	
4	392	274.16	1,058.7	
5	415	415.15	1,516.1	
6	434	340.16	1,188.7	
7	468	223.32	722.6	
8	496	464.78	1,420.3	
9	506	737.05	2,208.1	
10	10,380	75.00	10.9	Upper Marker

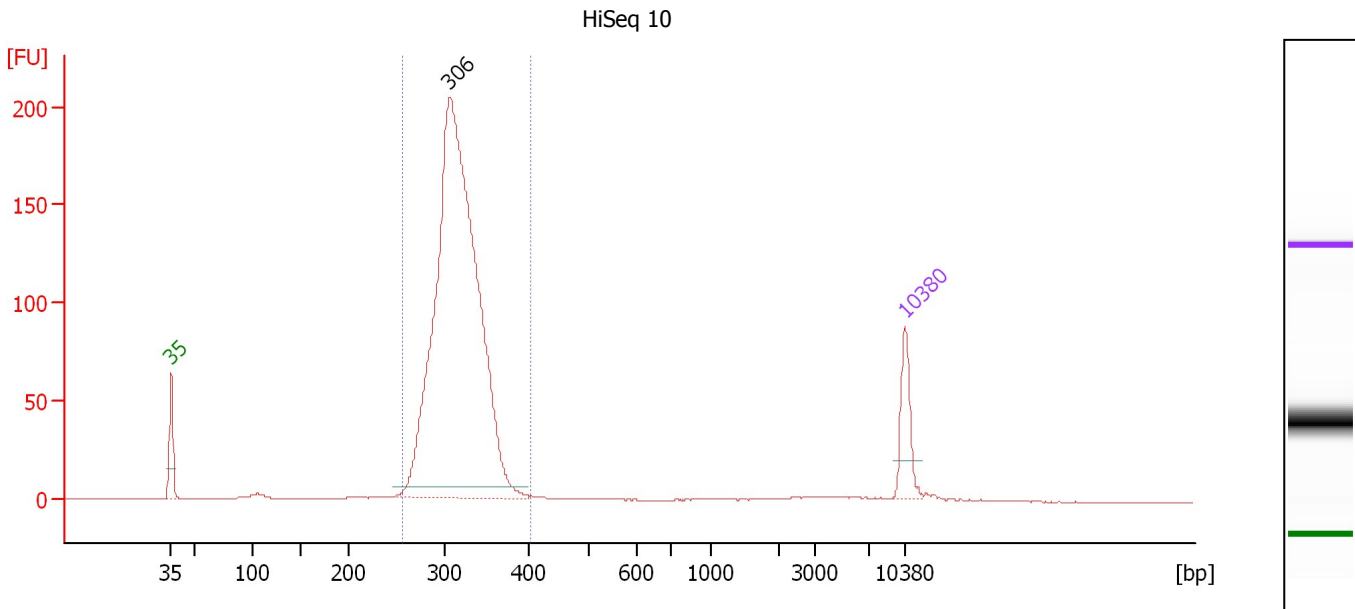
Region table for sample 8 : DAC2 8-24

From [bp]	To [bp]	Average Size [bp]	Molarity [pmol/l]	Conc. [pg/μl]	Corr. Area	% of Total	Size distribution in CV [%]	Color
286	633	431	16,335.4	4,505.10	2,363.0	94	15.5	Blue

Assay Class: High Sensitivity DNA Assay
 Data Path: C:\...ents and Settings\Bioanalyzer\2012-08-27\2012-08-27_001.xad

Created: 8/27/2012 9:38:37 AM
 Modified: 8/27/2012 10:41:58 AM

Electropherogram Summary Continued ...



Overall Results for sample 9 : HiSeq 10

Number of peaks found: 1 Corr. Area 1: 1,358.9
 Noise: 0.1

Peak table for sample 9 : HiSeq 10

Peak	Size [bp]	Conc. [pg/μl]	Molarity [pmol/l]	Observations
1	35	125.00	5,411.3	Lower Marker
2	306	2,007.80	9,937.6	
3	10,380	75.00	10.9	Upper Marker

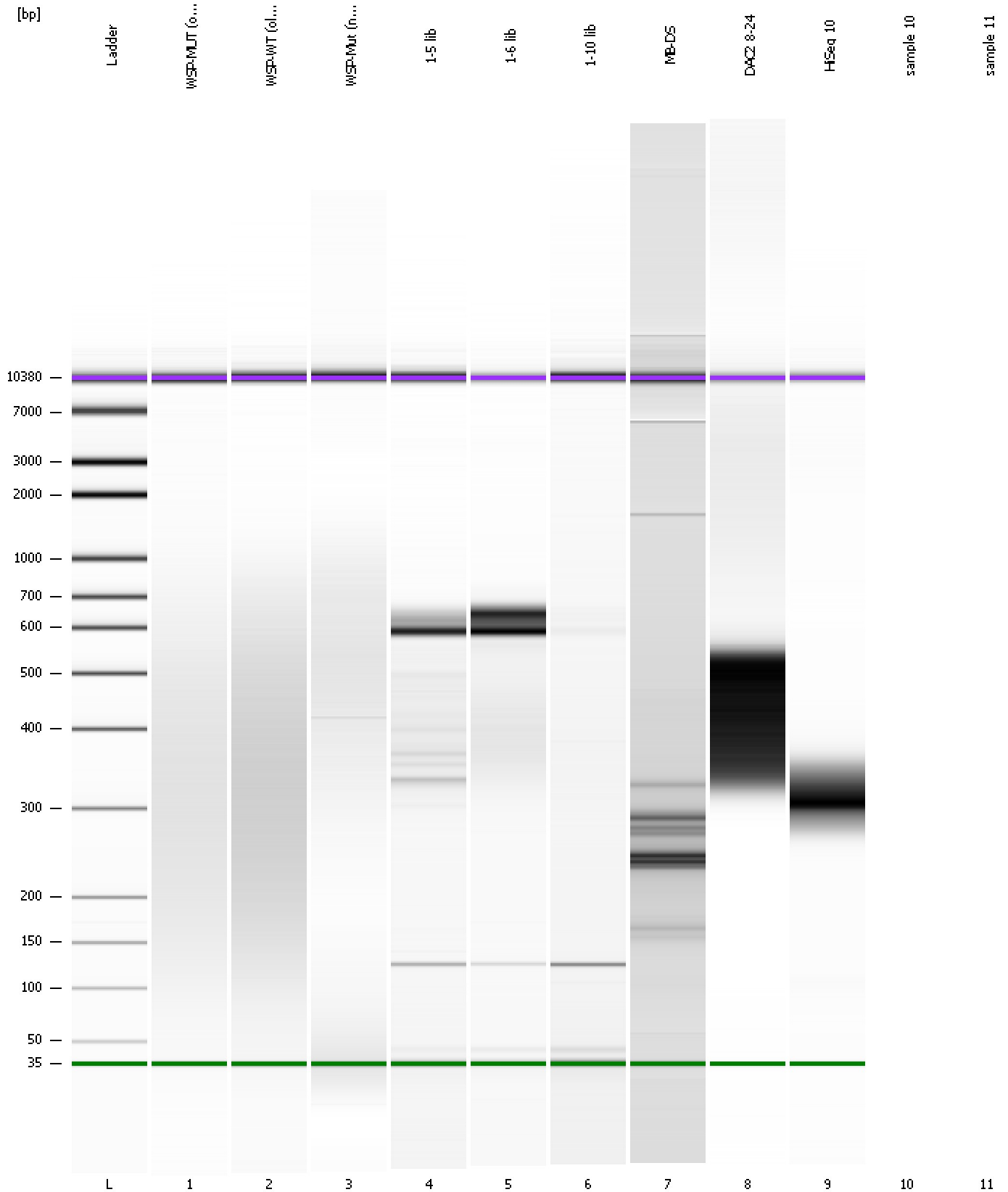
Region table for sample 9 : HiSeq 10

From [bp]	To [bp]	Average Size [bp]	Molarity [pmol/l]	Conc. [pg/μl]	Corr. Area	% of Total	Size distribution in CV [%]	Color
256	401	316	9,611.3	1,995.25	1,358.9	93	7.6	Blue

Assay Class: High Sensitivity DNA Assay
Data Path: C:\...ents and Settings\Bioanalyzer\2012-08-27\2012-08-27_001.xad

Created: 8/27/2012 9:38:37 AM
Modified: 8/27/2012 10:41:58 AM

Gel Image



Assay Class: High Sensitivity DNA Assay
Data Path: C:\...ents and Settings\Bioanalyzer\2012-08-27\2012-08-27_001.xad

Created: 8/27/2012 9:38:37 AM
Modified: 8/27/2012 10:41:58 AM

Invalid Samples

Sample 10 has not been run, no results available.

Sample 11 has not been run, no results available.