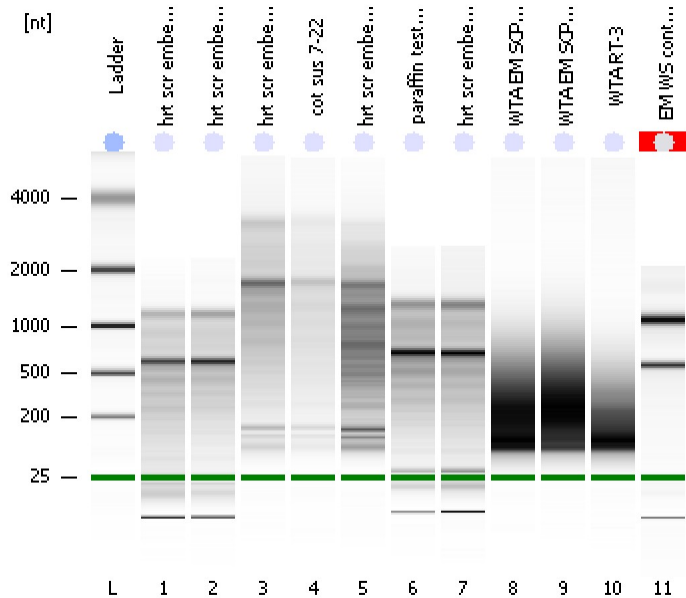


Assay Class: Eukaryote Total RNA Pico  
 Data Path: C:\...ents and Settings\Bioanalyzer\2012-08-27\2012-08-27\_002.xad

Created: 8/27/2012 11:57:09 AM  
 Modified: 8/27/2012 12:23:06 PM

**Electrophoresis File Run Summary**

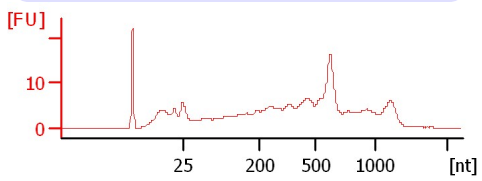


**Instrument Information:**  
 Instrument Name: DE13701086      Firmware: C.01.069  
 Serial#: DE13701086      Type: G2938B

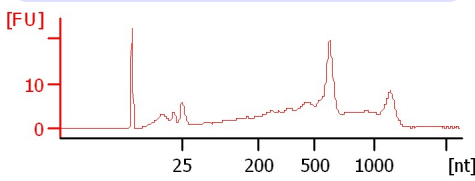
**Assay Information:**  
 Assay Origin Path: C:\Program Files\Agilent\2100 bioanalyzer\2100 expert\assays\RNA\Eukaryote Total RNA Pico Series II.xsy  
 Assay Class: Eukaryote Total RNA Pico  
 Version: 2.6  
 Assay Comments: Total RNA Analysis pg sensitivity (Eukaryote)  
 © Copyright 2003 - 2009 Agilent Technologies, Inc.

**Chip Information:**  
 Chip Lot #:   
 Reagent Kit Lot #:   
 Chip Comments:

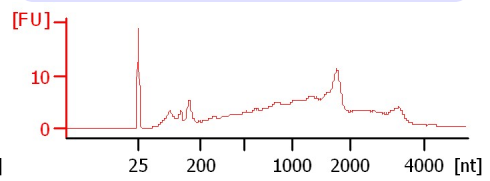
**hrt scr embed 8/13**  
 RIN: 3.10



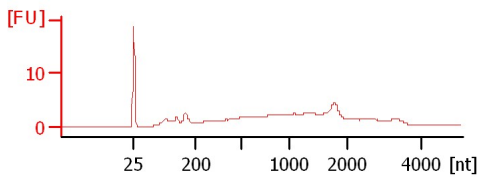
**hrt scr embed 8/10**  
 RIN: 3.70



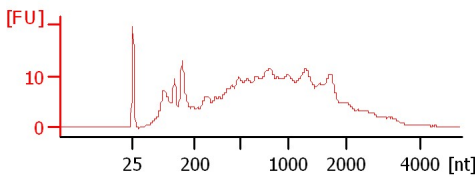
**hrt scr embed 8/20**  
 RIN: 2.60



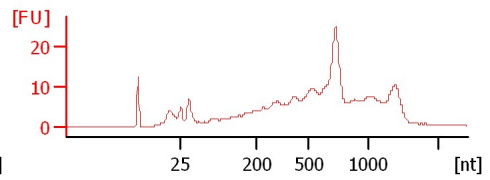
**cot sus 7-22**  
 RIN: 2.10



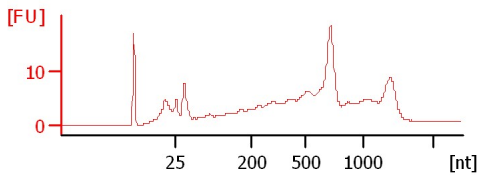
**hrt scr embed 8/14**  
 RIN: 2.80



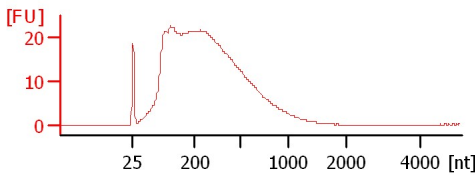
**paraffin test lot 1205104**  
 RIN: 3.10



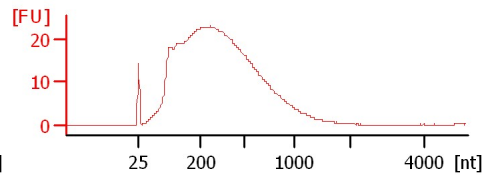
**hrt scr embed 8/17**  
 RIN: 3.60



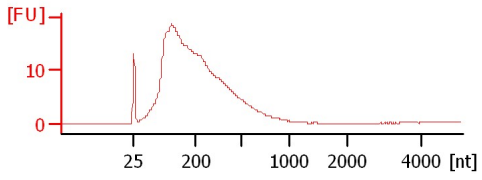
**WTA EM SCPY-3**  
 RIN: 2.10



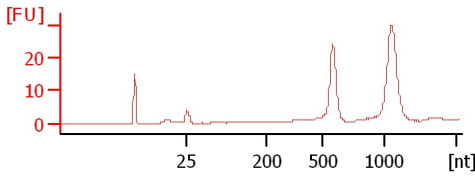
**WTA EM SCPY-2**  
 RIN: 2



**WTA RT-3**  
 RIN: 2.30



**EM WS control**  
 RIN N/A



Assay Class: Eukaryote Total RNA Pico  
 Data Path: C:\...ents and Settings\Bioanalyzer\2012-08-27\2012-08-27\_002.xad

Created: 8/27/2012 11:57:09 AM  
 Modified: 8/27/2012 12:23:06 PM

**Electrophoresis File Run Summary (Chip Summary)**

Sample Name	Sample Comment	Status	Result Label	Result Color
hrt scr embed 8/13		✓	RIN: 3.10	
hrt scr embed 8/10		✓	RIN: 3.70	
hrt scr embed 8/20		✓	RIN: 2.60	
cot sus 7-22		✓	RIN: 2.10	
hrt scr embed 8/14		✓	RIN: 2.80	
paraffin test lot 1205104		✓	RIN: 3.10	
hrt scr embed 8/17		✓	RIN: 3.60	
WTA EM SCPY-3		✓	RIN: 2.10	
WTA EM SCPY-2		✓	RIN:2	
WTA RT-3		✓	RIN: 2.30	
EM WS control		✓	RIN N/A	
Ladder		✓	All Other Samples	

**Chip Lot #**

**Reagent Kit Lot #**

**Chip Comments :**

Assay Class: Eukaryote Total RNA Pico  
Data Path: C:\...ents and Settings\Bioanalyzer\2012-08-27\2012-08-27\_002.xad

Created: 8/27/2012 11:57:09 AM  
Modified: 8/27/2012 12:23:06 PM

**Electrophoresis Assay Details**

**General Analysis Settings**

Number of Available Sample and Ladder Wells (Max.) : 12  
Minimum Visible Range [s] : 17  
Maximum Visible Range [s] : 70  
Start Analysis Time Range [s] : 18  
End Analysis Time Range [s] : 69  
Ladder Concentration [pg/μl] : 1000  
Lower Marker Concentration [pg/μl] : 0  
Upper Marker Concentration [pg/μl] : 0  
Used Lower Marker for Quantitation  
Standard Curve Fit is Logarithmic  
Show Data Aligned to Lower Marker

**Integrator Settings**

Integration Start Time [s] : 18  
Integration End Time [s] : 69  
Slope Threshold : 0.6  
Height Threshold [FU] : 0.5  
Area Threshold : 0.2  
Width Threshold [s] : 0.3  
Baseline Plateau [s] : 6

**Filter Settings**

Filter Width [s] : 0.5  
Polynomial Order : 4

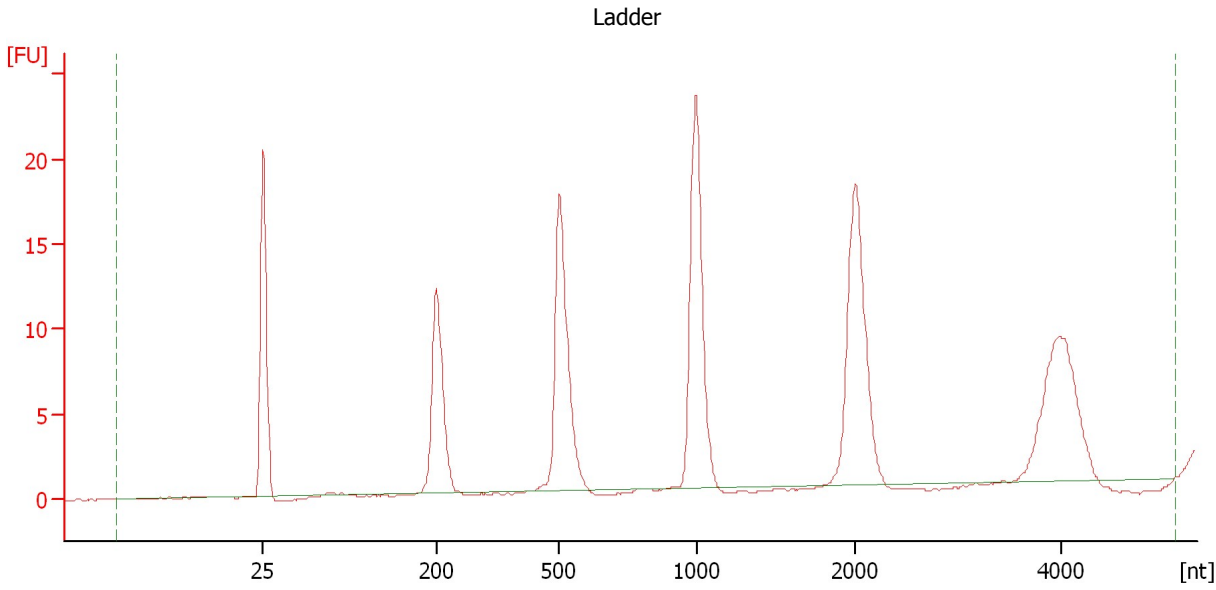
**Ladder**

Ladder Peak	Size
1	25
2	200
3	500
4	1000
5	2000
6	4000

Assay Class: Eukaryote Total RNA Pico  
Data Path: C:\...ents and Settings\Bioanalyzer\2012-08-27\2012-08-27\_002.xad

Created: 8/27/2012 11:57:09 AM  
Modified: 8/27/2012 12:23:06 PM

**Electropherogram Summary**



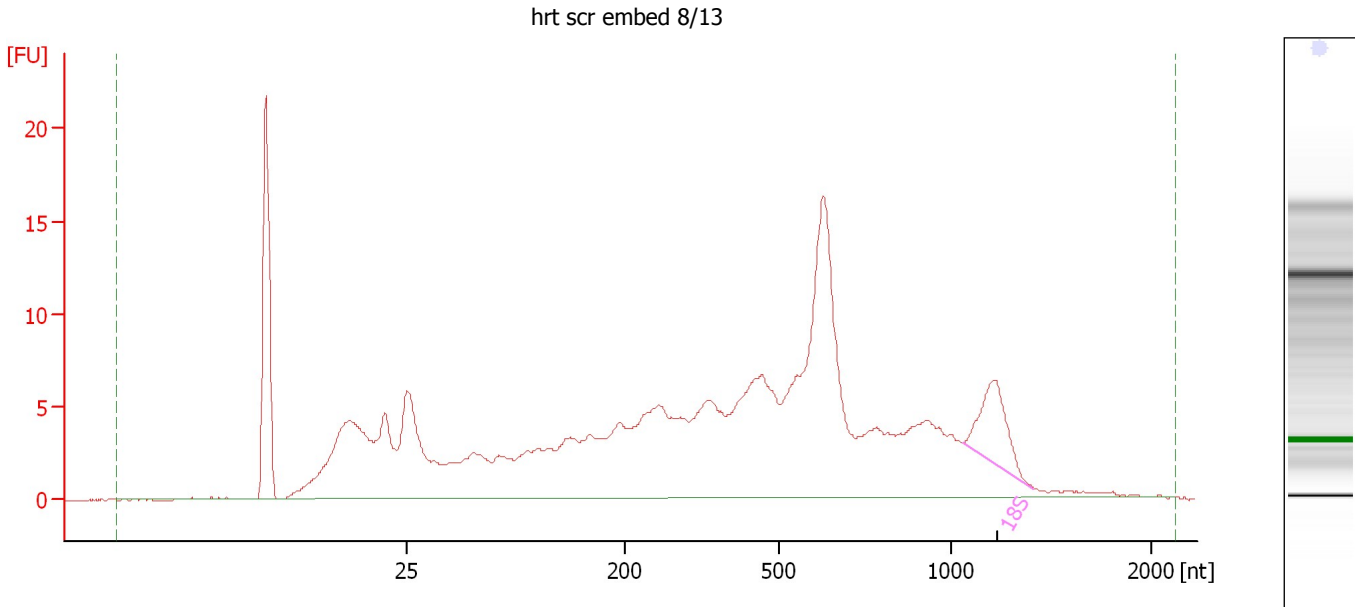
**Overall Results for Ladder**

RNA Area:	137.6	Result Flagging Color:	<span style="background-color: #add8e6; border: 1px solid black; display: inline-block; width: 20px; height: 10px;"></span>
RNA Concentration:	1,000 pg/ $\mu$ l	Result Flagging Label:	All Other Samples

Assay Class: Eukaryote Total RNA Pico  
Data Path: C:\...ents and Settings\Bioanalyzer\2012-08-27\2012-08-27\_002.xad

Created: 8/27/2012 11:57:09 AM  
Modified: 8/27/2012 12:23:06 PM

**Electropherogram Summary Continued ...**



**Overall Results for sample 1 : hrt scr embed 8/13**

RNA Area:	318.2	RNA Integrity Number (RIN):	3.1 (B.02.08)
RNA Concentration:	2,313 pg/μl	Result Flagging Color:	<span style="background-color: #ccccff; border: 1px solid black; display: inline-block; width: 20px; height: 10px;"></span>
rRNA Ratio [28s / 18s]:	0.0	Result Flagging Label:	RIN: 3.10

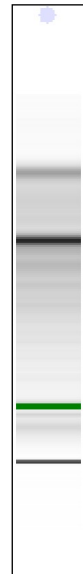
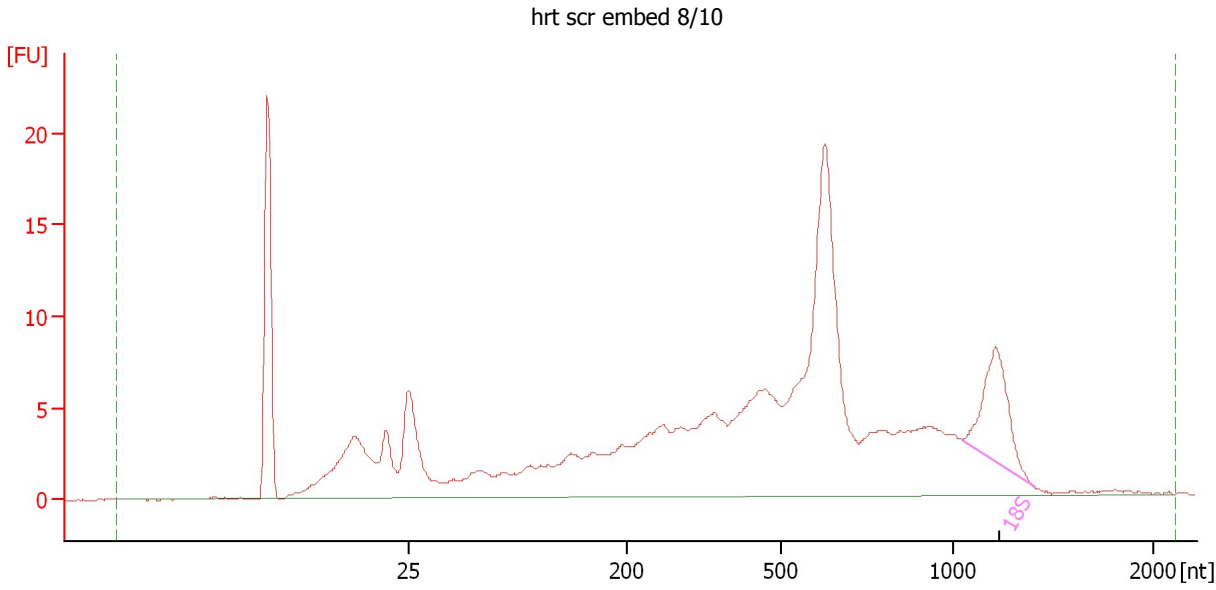
**Fragment table for sample 1 : hrt scr embed 8/13**

Name	Start Size [nt]	End Size [nt]	Area	% of total Area
18S	1,060	1,412	10.2	3.2

Assay Class: Eukaryote Total RNA Pico  
Data Path: C:\...ents and Settings\Bioanalyzer\2012-08-27\2012-08-27\_002.xad

Created: 8/27/2012 11:57:09 AM  
Modified: 8/27/2012 12:23:06 PM

**Electropherogram Summary Continued ...**



**Overall Results for sample 2 : hrt scr embed 8/10**

RNA Area:	272.3	RNA Integrity Number (RIN):	3.7 (B.02.08)
RNA Concentration:	1,979 pg/μl	Result Flagging Color:	<span style="background-color: #ccccff; border: 1px solid black; display: inline-block; width: 20px; height: 10px;"></span>
rRNA Ratio [28s / 18s]:	0.0	Result Flagging Label:	RIN: 3.70

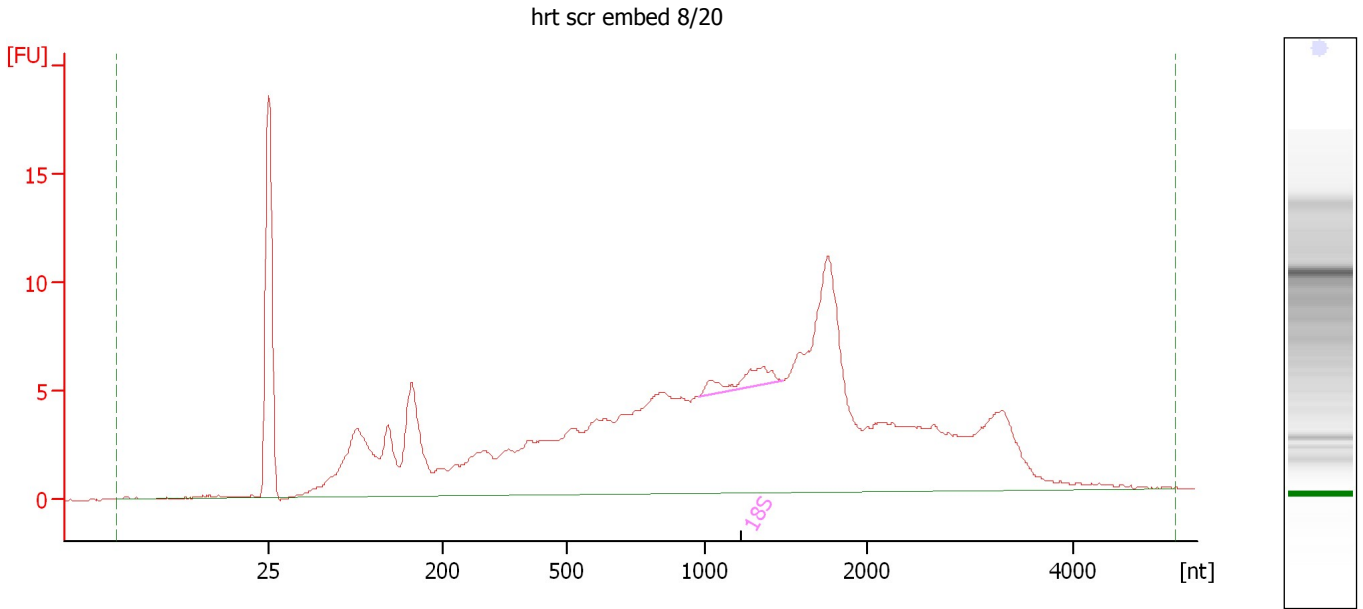
**Fragment table for sample 2 : hrt scr embed 8/10**

Name	Start Size [nt]	End Size [nt]	Area	% of total Area
18S	1,045	1,408	13.8	5.1

Assay Class: Eukaryote Total RNA Pico  
Data Path: C:\...ents and Settings\Bioanalyzer\2012-08-27\2012-08-27\_002.xad

Created: 8/27/2012 11:57:09 AM  
Modified: 8/27/2012 12:23:06 PM

**Electropherogram Summary Continued ...**



**Overall Results for sample 3 : hrt scr embed 8/20**

RNA Area:	252.4	RNA Integrity Number (RIN):	2.6 (B.02.08)
RNA Concentration:	1,835 pg/μl	Result Flagging Color:	<span style="background-color: #ccccff; border: 1px solid black; display: inline-block; width: 20px; height: 10px;"></span>
rRNA Ratio [28s / 18s]:	0.0	Result Flagging Label:	RIN: 2.60

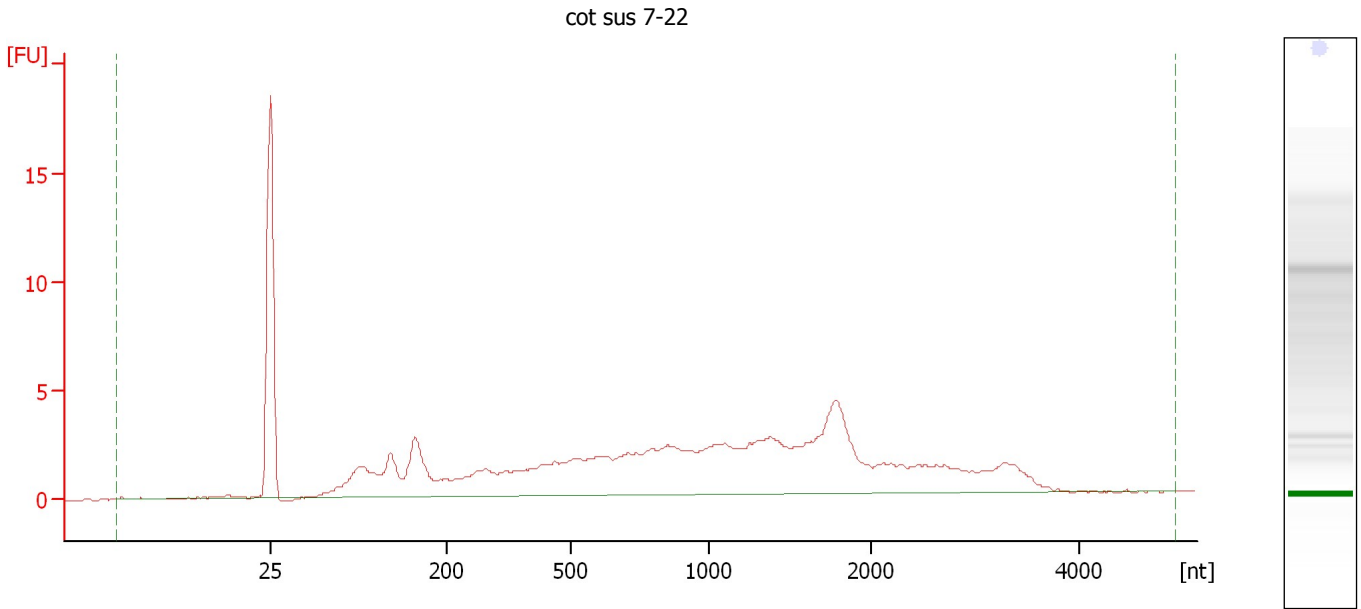
**Fragment table for sample 3 : hrt scr embed 8/20**

Name	Start Size [nt]	End Size [nt]	Area	% of total Area
18S	977	1,479	3.5	1.4

Assay Class: Eukaryote Total RNA Pico  
Data Path: C:\...ents and Settings\Bioanalyzer\2012-08-27\2012-08-27\_002.xad

Created: 8/27/2012 11:57:09 AM  
Modified: 8/27/2012 12:23:06 PM

**Electropherogram Summary Continued ...**



**Overall Results for sample 4 : cot sus 7-22**

RNA Area:	117.8	RNA Integrity Number (RIN):	2.1 (B.02.08)
RNA Concentration:	856 µg/µl	Result Flagging Color:	<span style="background-color: #ccccff; border: 1px solid black; display: inline-block; width: 20px; height: 10px;"></span>
rRNA Ratio [28s / 18s]:	0.0	Result Flagging Label:	RIN: 2.10

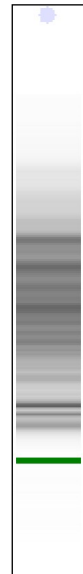
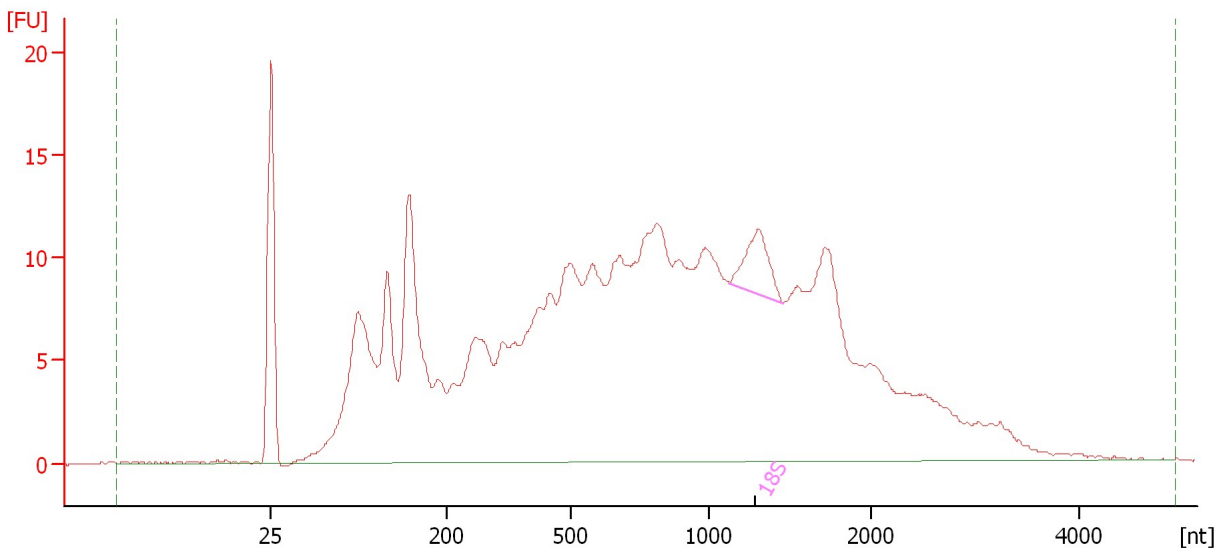


Assay Class: Eukaryote Total RNA Pico  
Data Path: C:\...ents and Settings\Bioanalyzer\2012-08-27\2012-08-27\_002.xad

Created: 8/27/2012 11:57:09 AM  
Modified: 8/27/2012 12:23:06 PM

**Electropherogram Summary Continued ...**

hrt scr embed 8/14



**Overall Results for sample 5 : hrt scr embed 8/14**

RNA Area:	493.1	RNA Integrity Number (RIN):	2.8 (B.02.08)
RNA Concentration:	3,584 pg/μl	Result Flagging Color:	<span style="background-color: #ccccff; border: 1px solid black; display: inline-block; width: 20px; height: 10px;"></span>
rRNA Ratio [28s / 18s]:	0.0	Result Flagging Label:	RIN: 2.80

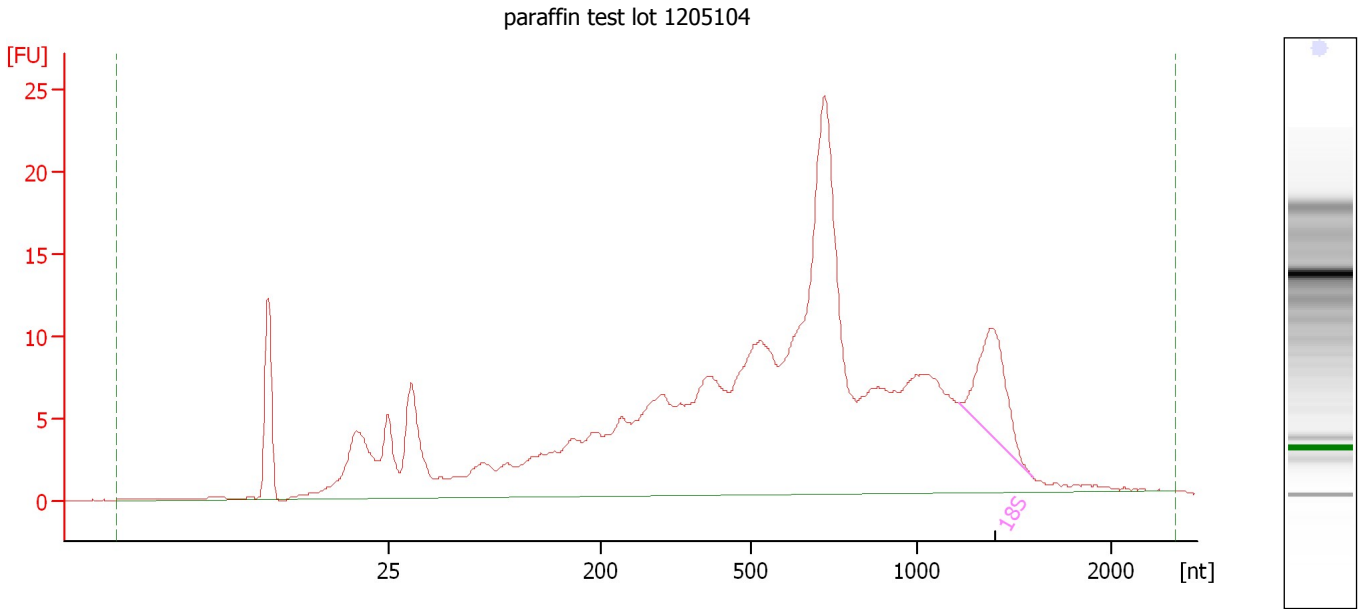
**Fragment table for sample 5 : hrt scr embed 8/14**

Name	Start Size [nt]	End Size [nt]	Area	% of total Area
18S	1,123	1,454	7.9	1.6

Assay Class: Eukaryote Total RNA Pico  
Data Path: C:\...ents and Settings\Bioanalyzer\2012-08-27\2012-08-27\_002.xad

Created: 8/27/2012 11:57:09 AM  
Modified: 8/27/2012 12:23:06 PM

**Electropherogram Summary Continued ...**



**Overall Results for sample 6 : paraffin test lot 1205104**

RNA Area:	391.0	RNA Integrity Number (RIN):	3.1 (B.02.08)
RNA Concentration:	2,842 pg/μl	Result Flagging Color:	<span style="background-color: #ccccff; border: 1px solid black; display: inline-block; width: 20px; height: 10px;"></span>
rRNA Ratio [28s / 18s]:	0.0	Result Flagging Label:	RIN: 3.10

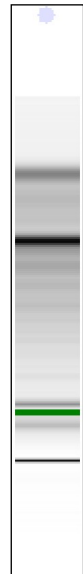
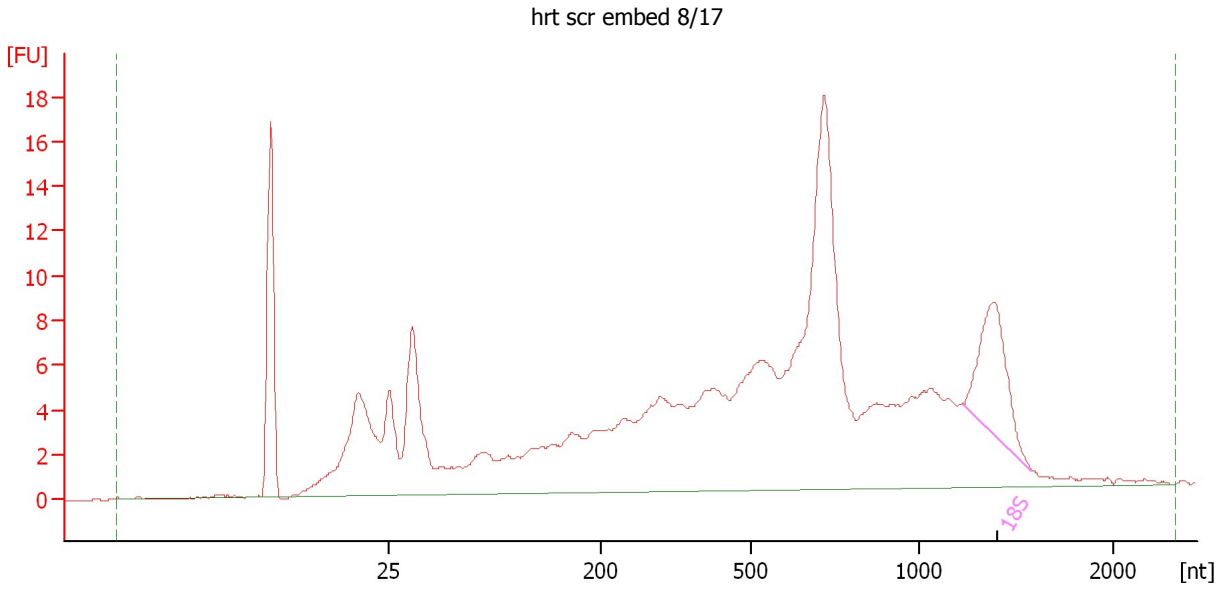
**Fragment table for sample 6 : paraffin test lot 1205104**

Name	Start Size [nt]	End Size [nt]	Area	% of total Area
18S	1,214	1,593	16.1	4.1

Assay Class: Eukaryote Total RNA Pico  
Data Path: C:\...ents and Settings\Bioanalyzer\2012-08-27\2012-08-27\_002.xad

Created: 8/27/2012 11:57:09 AM  
Modified: 8/27/2012 12:23:06 PM

**Electropherogram Summary Continued ...**



**Overall Results for sample 7 : hrt scr embed 8/17**

RNA Area:	293.2	RNA Integrity Number (RIN):	3.6 (B.02.08)
RNA Concentration:	2,131 pg/μl	Result Flagging Color:	<span style="background-color: #ccccff; border: 1px solid black; display: inline-block; width: 20px; height: 10px;"></span>
rRNA Ratio [28s / 18s]:	0.0	Result Flagging Label:	RIN: 3.60

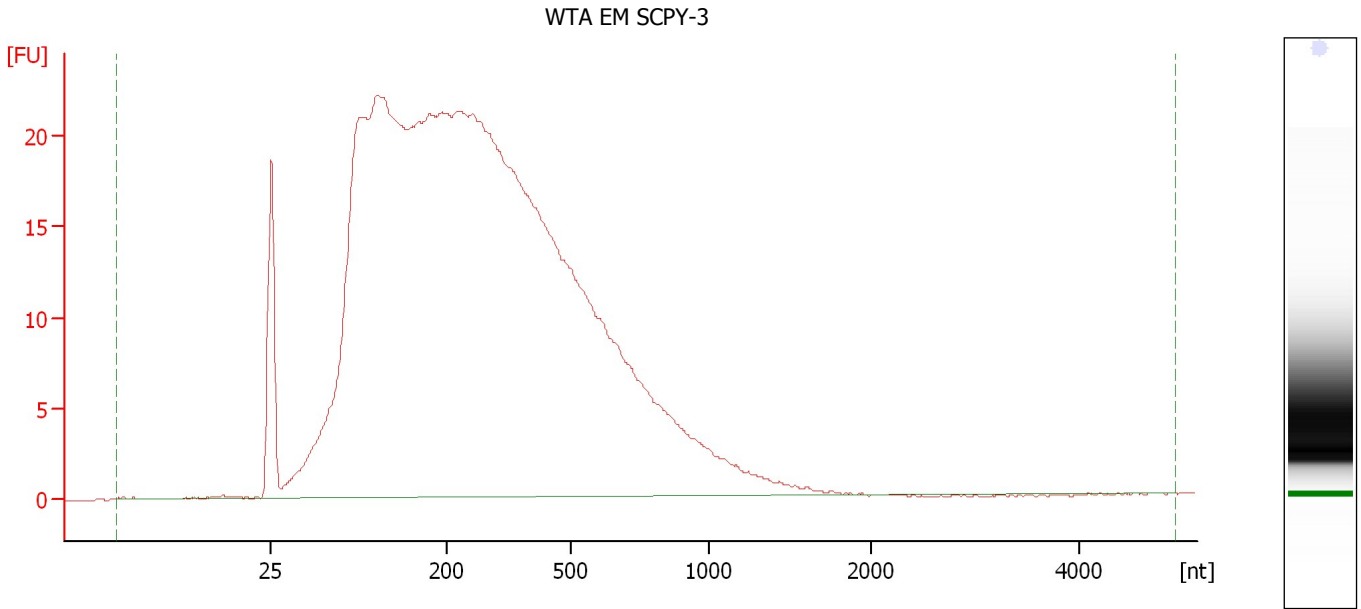
**Fragment table for sample 7 : hrt scr embed 8/17**

Name	Start Size [nt]	End Size [nt]	Area	% of total Area
18S	1,226	1,577	14.2	4.8

Assay Class: Eukaryote Total RNA Pico  
Data Path: C:\...ents and Settings\Bioanalyzer\2012-08-27\2012-08-27\_002.xad

Created: 8/27/2012 11:57:09 AM  
Modified: 8/27/2012 12:23:06 PM

**Electropherogram Summary Continued ...**



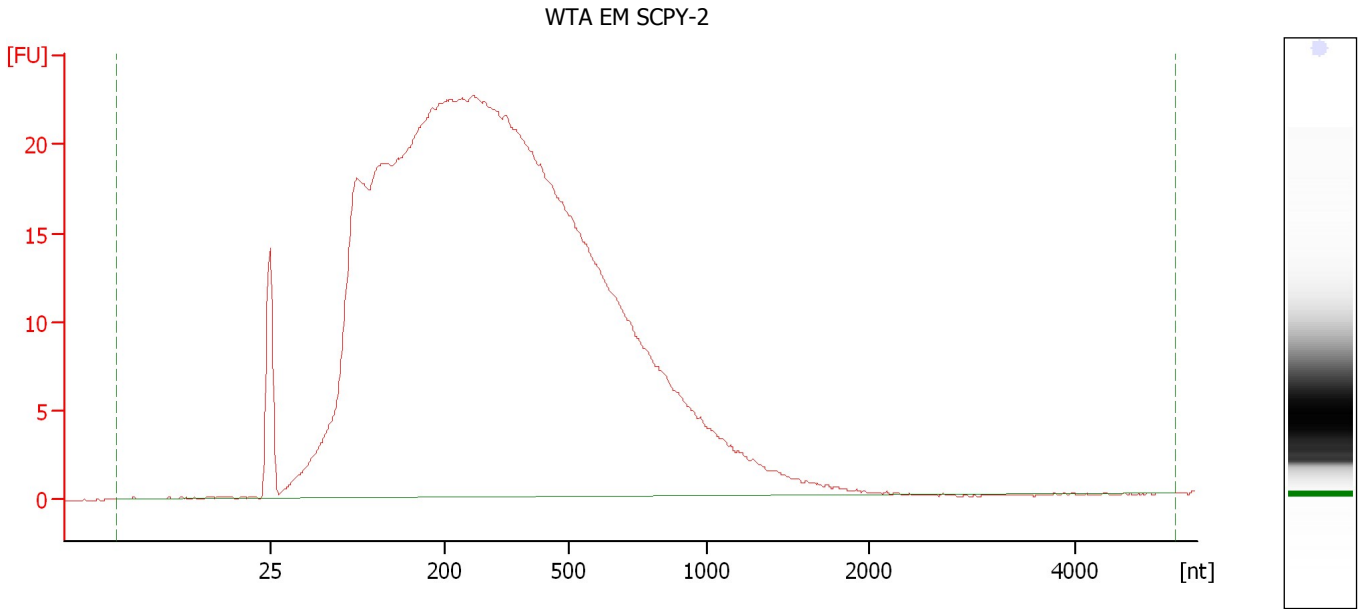
**Overall Results for sample 8 : WTA EM SCPY-3**

RNA Area:	720.6	RNA Integrity Number (RIN):	2.1 (B.02.08)
RNA Concentration:	5,238 pg/μl	Result Flagging Color:	<span style="background-color: #ccccff; border: 1px solid black; display: inline-block; width: 20px; height: 10px;"></span>
rRNA Ratio [28s / 18s]:	0.0	Result Flagging Label:	RIN: 2.10

Assay Class: Eukaryote Total RNA Pico  
Data Path: C:\...ents and Settings\Bioanalyzer\2012-08-27\2012-08-27\_002.xad

Created: 8/27/2012 11:57:09 AM  
Modified: 8/27/2012 12:23:06 PM

**Electropherogram Summary Continued ...**



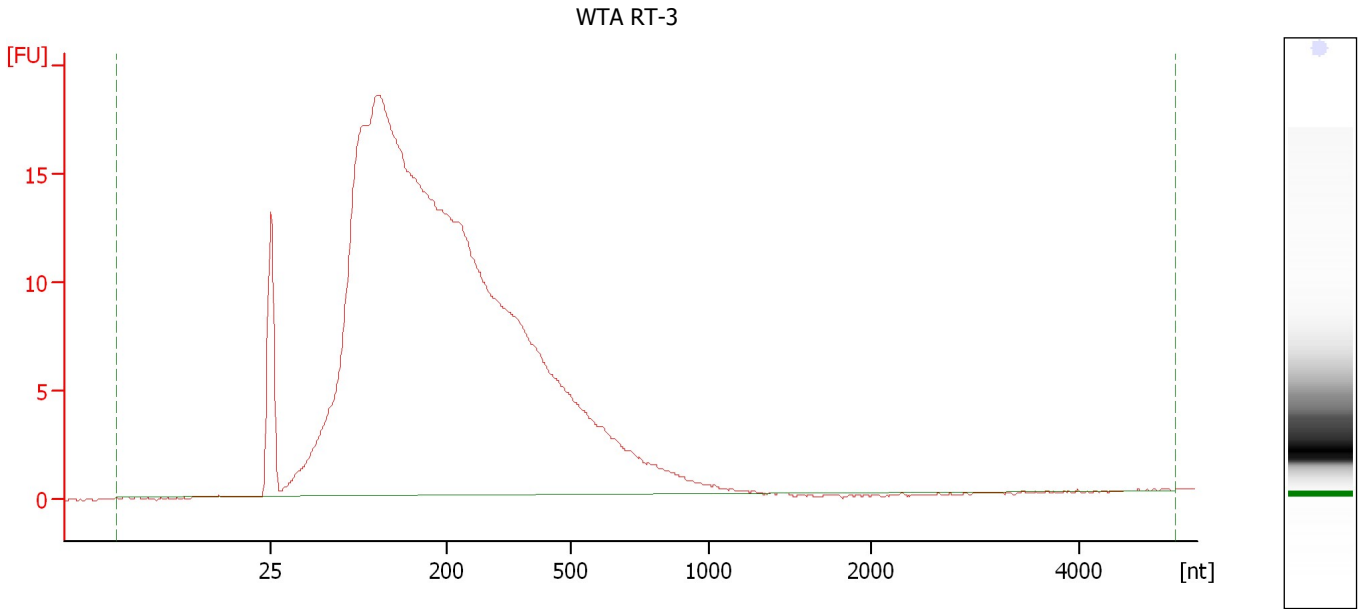
**Overall Results for sample 9 : WTA EM SCPY-2**

RNA Area:	780.2	RNA Integrity Number (RIN):	2 (B.02.08)
RNA Concentration:	5,671 pg/μl	Result Flagging Color:	<span style="background-color: #ccccff; border: 1px solid black; display: inline-block; width: 20px; height: 10px;"></span>
rRNA Ratio [28s / 18s]:	0.0	Result Flagging Label:	RIN:2

Assay Class: Eukaryote Total RNA Pico  
Data Path: C:\...ents and Settings\Bioanalyzer\2012-08-27\2012-08-27\_002.xad

Created: 8/27/2012 11:57:09 AM  
Modified: 8/27/2012 12:23:06 PM

**Electropherogram Summary Continued ...**



**Overall Results for sample 10 : WTA RT-3**

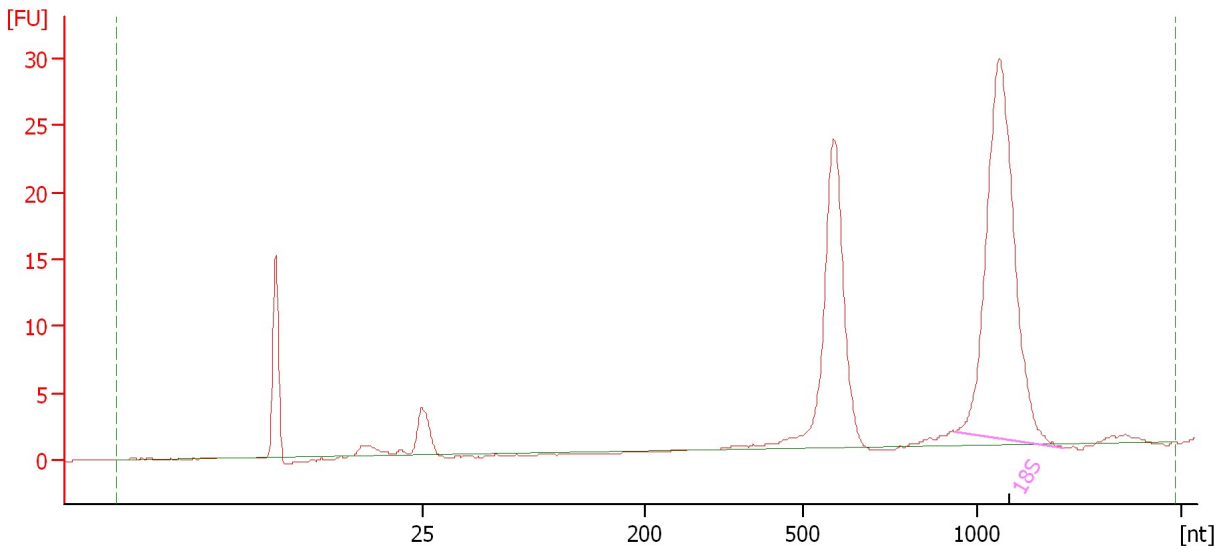
RNA Area:	414.3	RNA Integrity Number (RIN):	2.3 (B.02.08)
RNA Concentration:	3,011 pg/ $\mu$ l	Result Flagging Color:	<span style="background-color: #ccccff; border: 1px solid black; display: inline-block; width: 20px; height: 10px;"></span>
rRNA Ratio [28s / 18s]:	0.0	Result Flagging Label:	RIN: 2.30

Assay Class: Eukaryote Total RNA Pico  
Data Path: C:\...ents and Settings\Bioanalyzer\2012-08-27\2012-08-27\_002.xad

Created: 8/27/2012 11:57:09 AM  
Modified: 8/27/2012 12:23:06 PM

**Electropherogram Summary Continued ...**

EM WS control



**Setpoint Deviations for sample 11 : EM WS control**

Height Threshold [FU] : 0.3

**Overall Results for sample 11 : EM WS control**

RNA Area:	146.8	RNA Integrity Number (RIN):	N/A (B.02.08)
RNA Concentration:	1,067 pg/μl	Result Flagging Color:	<span style="background-color: #cccccc; border: 1px solid black; display: inline-block; width: 20px; height: 10px;"></span>
rRNA Ratio [28s / 18s]:	0.0	Result Flagging Label:	RIN N/A

**Fragment table for sample 11 : EM WS control**

Name	Start Size [nt]	End Size [nt]	Area	% of total Area
18S	937	1,421	70.4	48.0

Assay Class: Eukaryote Total RNA Pico  
Data Path: C:\...ents and Settings\Bioanalyzer\2012-08-27\2012-08-27\_002.xad

Created: 8/27/2012 11:57:09 AM  
Modified: 8/27/2012 12:23:06 PM

**Gel Image**

