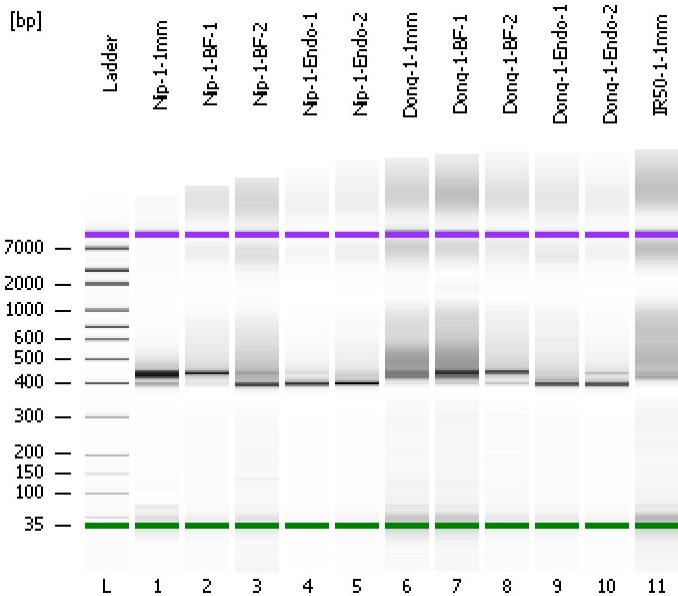


Assay Class: High Sensitivity DNA Assay  
Data Path: C:\...ents and Settings\Bioanalyzer\2012-08-27\2012-08-27\_003.xad

Created: 8/27/2012 12:37:30 PM  
Modified: 8/27/2012 1:28:44 PM

### Electrophoresis File Run Summary



#### Instrument Information:

Instrument Name: DE13701086      Firmware: C.01.069  
Serial#: DE13701086      Type: G2938B

#### Assay Information:

Assay Origin Path: C:\Program Files\Agilent\2100 bioanalyzer\2100 expert\assays\dsDNA\High Sensitivity DNA.xsy  
Assay Class: High Sensitivity DNA Assay  
Version: 1.03  
Assay Comments: Copyright © 2003-2010 Agilent Technologies

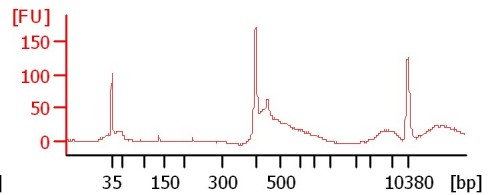
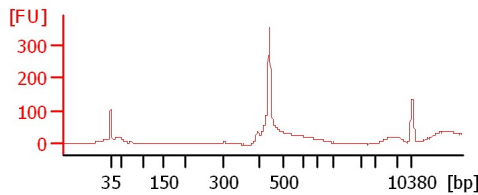
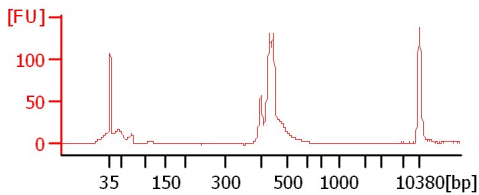
#### Chip Information:

Chip Lot #:      Reagent Kit Lot #:      Chip Comments:

Nip-1-1mm

Nip-1-BF-1

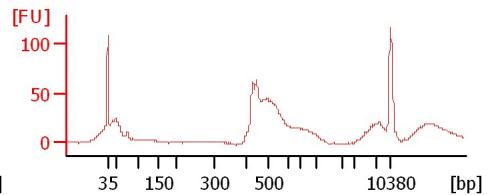
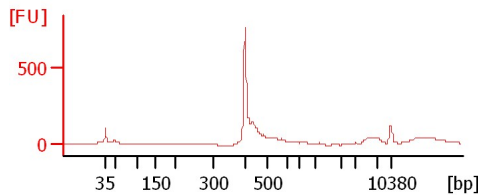
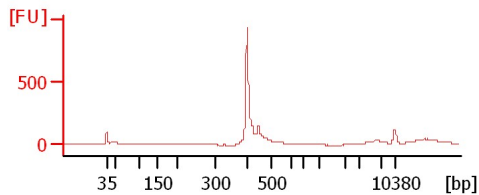
Nip-1-BF-2



Nip-1-Endo-1

Nip-1-Endo-2

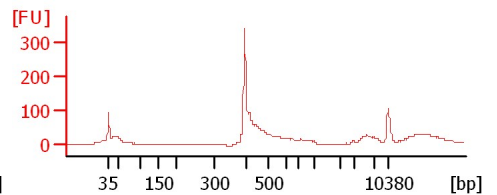
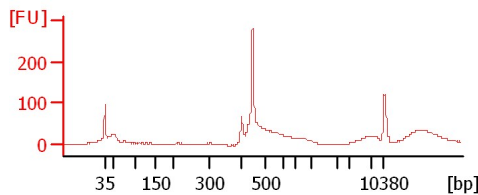
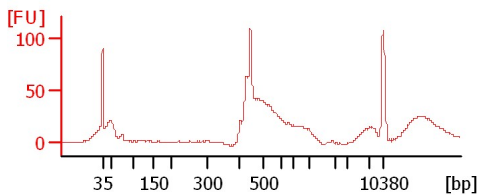
Dong-1-1mm



Dong-1-BF-1

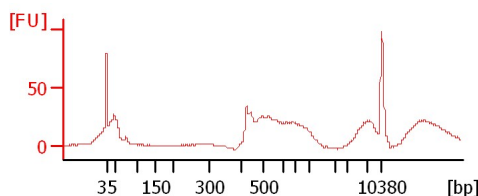
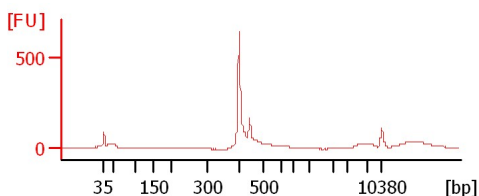
Dong-1-BF-2

Dong-1-Endo-1



Dong-1-Endo-2

IR50-1-1mm



Assay Class: High Sensitivity DNA Assay  
 Data Path: C:\...ents and Settings\Bioanalyzer\2012-08-27\2012-08-27\_003.xad

Created: 8/27/2012 12:37:30 PM  
 Modified: 8/27/2012 1:28:44 PM

**Electrophoresis File Run Summary (Chip Summary)**

Sample Name	Sample Comment	Rest. Digest	Status	Observation	Result Label	Result Color
Nip-1-1mm		<input type="checkbox"/>	✓			
Nip-1-BF-1		<input type="checkbox"/>	✓			
Nip-1-BF-2		<input type="checkbox"/>	✓			
Nip-1-Endo-1		<input type="checkbox"/>	✓			
Nip-1-Endo-2		<input type="checkbox"/>	✓			
Dong-1-1mm		<input type="checkbox"/>	✓			
Dong-1-BF-1		<input type="checkbox"/>	✓			
Dong-1-BF-2		<input type="checkbox"/>	✓			
Dong-1-Endo-1		<input type="checkbox"/>	✓			
Dong-1-Endo-2		<input type="checkbox"/>	✓			
IR50-1-1mm		<input type="checkbox"/>	✓			
Ladder		<input type="checkbox"/>	✓			

**Chip Lot #**

**Reagent Kit Lot #**

**Chip Comments :**

Assay Class: High Sensitivity DNA Assay  
Data Path: C:\...ents and Settings\Bioanalyzer\2012-08-27\2012-08-27\_003.xad

Created: 8/27/2012 12:37:30 PM  
Modified: 8/27/2012 1:28:44 PM

**Electrophoresis Assay Details**

**General Analysis Settings**

Number of Available Sample and Ladder Wells (Max.) : 12  
Minimum Visible Range [s] : 32  
Maximum Visible Range [s] : 138  
Start Analysis Time Range [s] : 33  
End Analysis Time Range [s] : 137.5  
Ladder Concentration [pg/ $\mu$ l] : 1950  
Uses Standard Area for Ladder Fragments  
Lower Marker Concentration [pg/ $\mu$ l] : 125  
Upper Marker Concentration [pg/ $\mu$ l] : 75  
Used Upper Marker for Quantitation  
Standard Curve Fit is Point to Point  
Show Data Aligned to Lower and Upper Marker

**Integrator Settings**

Integration Start Time [s] : 33.05  
Integration End Time [s] : 137  
Slope Threshold : 0.8  
Height Threshold [FU] : 5  
Area Threshold : 0.1  
Width Threshold [s] : 0.6  
Baseline Plateau [s] : 0.5

**Filter Settings**

Filter Width [s] : 0.5  
Polynomial Order : 4

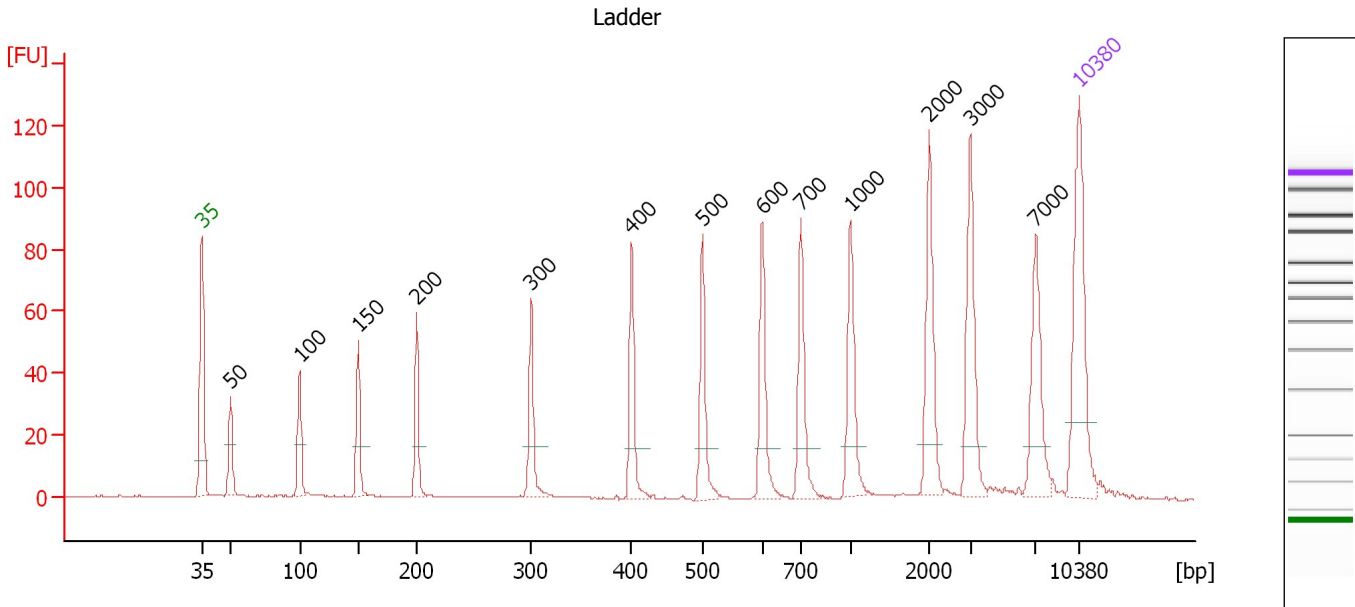
**Ladder**

Ladder Peak	Size	Area
1	35	160
2	50	210
3	100	208
4	150	221
5	200	242
6	300	270
7	400	305
8	500	306
9	600	336
10	700	321
11	1000	366
12	2000	413
13	3000	411
14	7000	400
15	10380	214

Assay Class: High Sensitivity DNA Assay  
 Data Path: C:\...ents and Settings\Bioanalyzer\2012-08-27\2012-08-27\_003.xad

Created: 8/27/2012 12:37:30 PM  
 Modified: 8/27/2012 1:28:44 PM

**Electropherogram Summary**



**Overall Results for Ladder**

Noise: 0.1

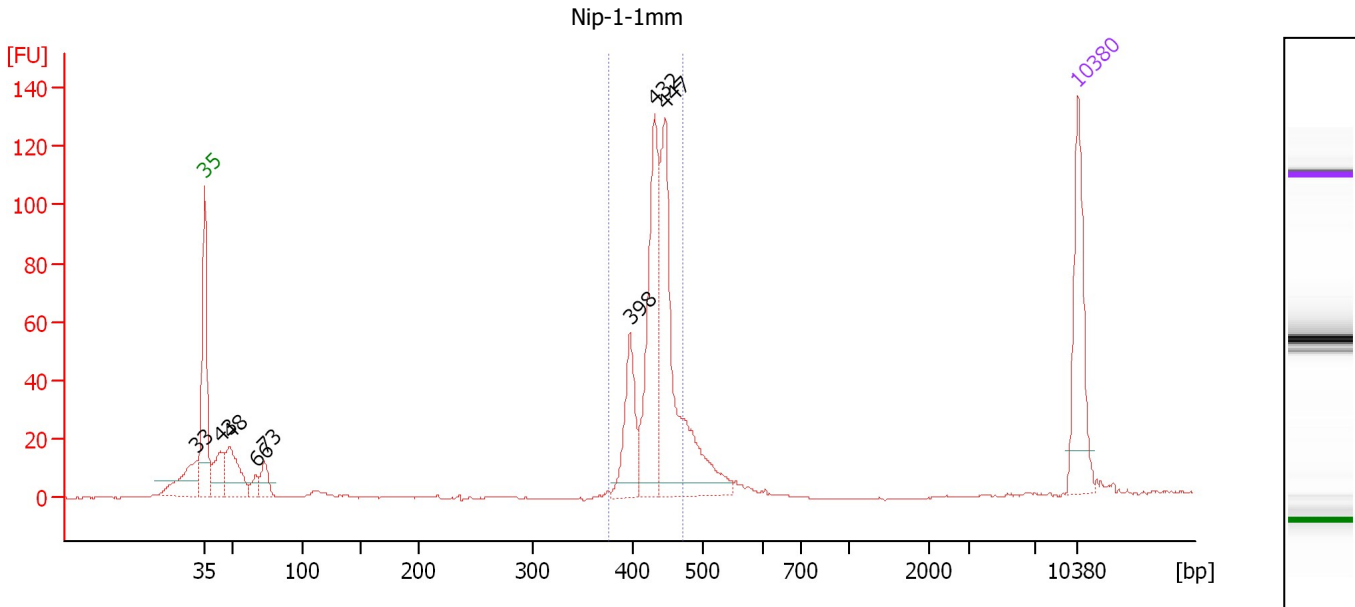
**Peak table for Ladder**

Peak	Size [bp]	Conc. [pg/μl]	Molarity [pmol/l]	Observations
1	35	125.00	5,411.3	Lower Marker
2	50	150.00	4,545.5	Ladder Peak
3	100	150.00	2,272.7	Ladder Peak
4	150	150.00	1,515.2	Ladder Peak
5	200	150.00	1,136.4	Ladder Peak
6	300	150.00	757.6	Ladder Peak
7	400	150.00	568.2	Ladder Peak
8	500	150.00	454.5	Ladder Peak
9	600	150.00	378.8	Ladder Peak
10	700	150.00	324.7	Ladder Peak
11	1,000	150.00	227.3	Ladder Peak
12	2,000	150.00	113.6	Ladder Peak
13	3,000	150.00	75.8	Ladder Peak
14	7,000	150.00	32.5	Ladder Peak
15	10,380	75.00	10.9	Upper Marker

Assay Class: High Sensitivity DNA Assay  
 Data Path: C:\...ents and Settings\Bioanalyzer\2012-08-27\2012-08-27\_003.xad

Created: 8/27/2012 12:37:30 PM  
 Modified: 8/27/2012 1:28:44 PM

**Electropherogram Summary Continued ...**



**Overall Results for sample 1 : Nip-1-1mm**

Number of peaks found: 8                      Corr. Area 1: 420.1  
 Noise: 0.2

**Peak table for sample 1 : Nip-1-1mm**

Peak	Size [bp]	Conc. [pg/μl]	Molarity [pmol/l]	Observations
1	33	0.00	0.0	
2	35	125.00	5,411.3	Lower Marker
3	43	50.48	1,763.5	
4	48	72.58	2,285.2	
5	66	14.36	327.3	
6	73	26.76	554.8	
7	398	69.65	265.3	
8	432	163.99	575.6	
9	447	226.94	769.6	
10	10,380	75.00	10.9	Upper Marker

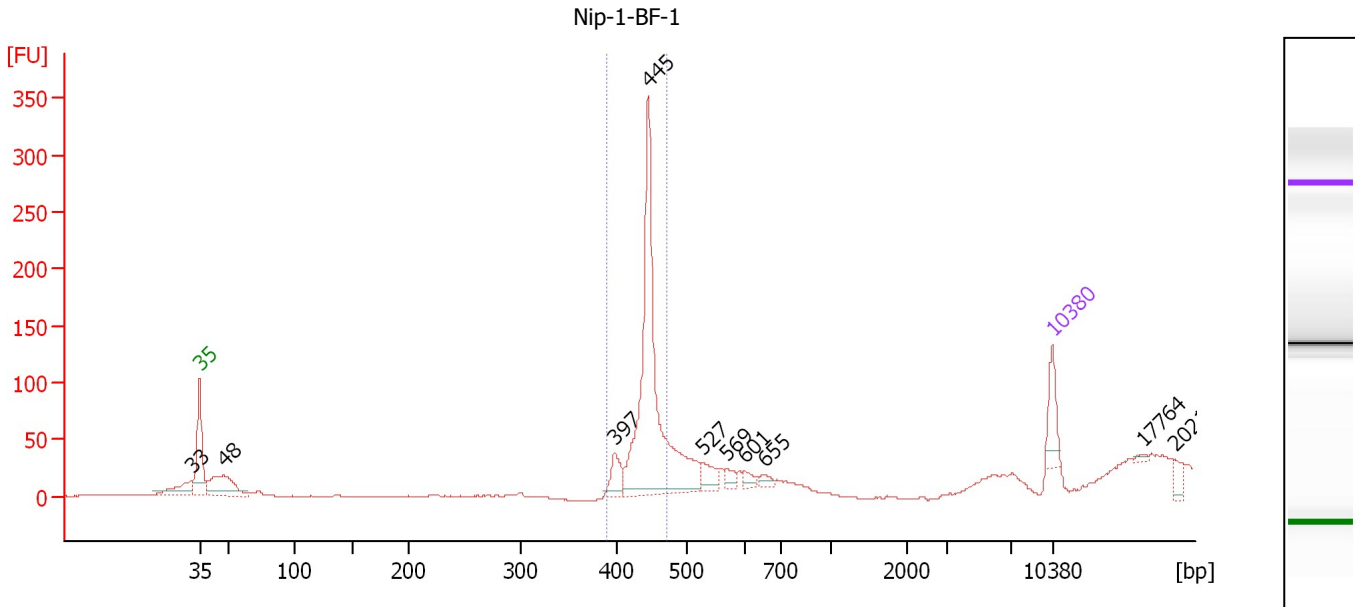
**Region table for sample 1 : Nip-1-1mm**

From [bp]	To [bp]	Average Size [bp]	Molarity [pmol/l]	Conc. [pg/μl]	Corr. Area	% of Total	Size distribution in CV [%]	Color
377	472	432	1,374.1	390.78	420.1	60	4.7	Blue

Assay Class: High Sensitivity DNA Assay  
 Data Path: C:\...ents and Settings\Bioanalyzer\2012-08-27\2012-08-27\_003.xad

Created: 8/27/2012 12:37:30 PM  
 Modified: 8/27/2012 1:28:44 PM

**Electropherogram Summary Continued ...**



**Overall Results for sample 2 : Nip-1-BF-1**

Number of peaks found: 10                      Corr. Area 1: 463.4  
 Noise: 0.2

**Peak table for sample 2 : Nip-1-BF-1**

Peak	Size [bp]	Conc. [pg/μl]	Molarity [pmol/l]	Observations
1	33	0.00	0.0	
2	35	125.00	5,411.3	Lower Marker
3	48	219.28	6,941.9	
4	397	79.75	304.3	
5	445	931.22	3,174.2	
6	527	56.90	163.6	
7	569	28.61	76.2	
8	601	23.31	58.8	
9	655	19.47	45.1	
10	10,380	75.00	10.9	Upper Marker
11	17,764	0.00	0.0	
12	20,211	0.00	0.0	

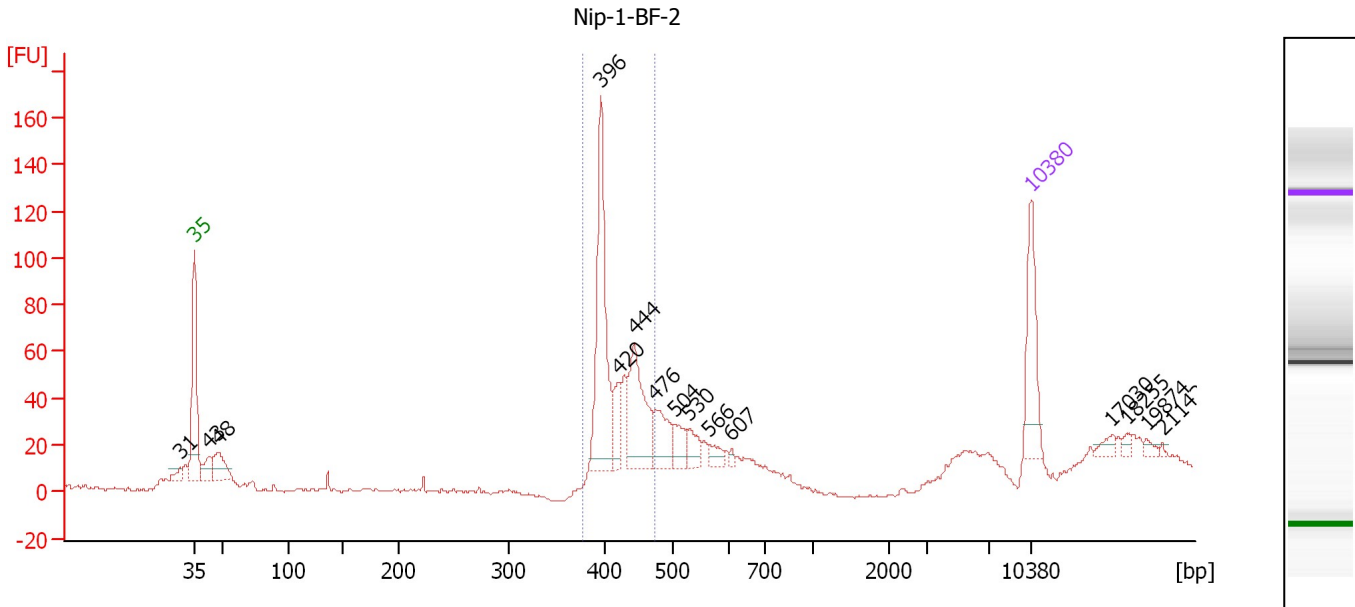
**Region table for sample 2 : Nip-1-BF-1**

From [bp]	To [bp]	Average Size [bp]	Molarity [pmol/l]	Conc. [pg/μl]	Corr. Area	% of Total	Size distribution in CV [%]	Color
390	473	442	2,400.8	699.58	463.4	64	3.4	Blue

Assay Class: High Sensitivity DNA Assay  
 Data Path: C:\...ents and Settings\Bioanalyzer\2012-08-27\2012-08-27\_003.xad

Created: 8/27/2012 12:37:30 PM  
 Modified: 8/27/2012 1:28:44 PM

**Electropherogram Summary Continued ...**



**Overall Results for sample 3 : Nip-1-BF-2**

Number of peaks found: 15                      Corr. Area 1: 364.0  
 Noise: 0.7

**Peak table for sample 3 : Nip-1-BF-2**

Peak	Size [bp]	Conc. [pg/μl]	Molarity [pmol/l]	Observations
1	31	0.00	0.0	
2	35	125.00	5,411.3	Lower Marker
3	43	35.28	1,255.5	
4	48	52.95	1,677.8	
5	396	219.00	837.4	
6	420	33.67	121.5	
7	444	125.78	429.7	
8	476	54.19	172.5	
9	504	29.80	89.6	
10	530	25.78	73.6	
11	566	15.94	42.7	
12	607	4.53	11.3	
13	10,380	75.00	10.9	Upper Marker
14	17,030	0.00	0.0	
15	18,255	0.00	0.0	
16	19,874	0.00	0.0	
17	21,142	0.00	0.0	

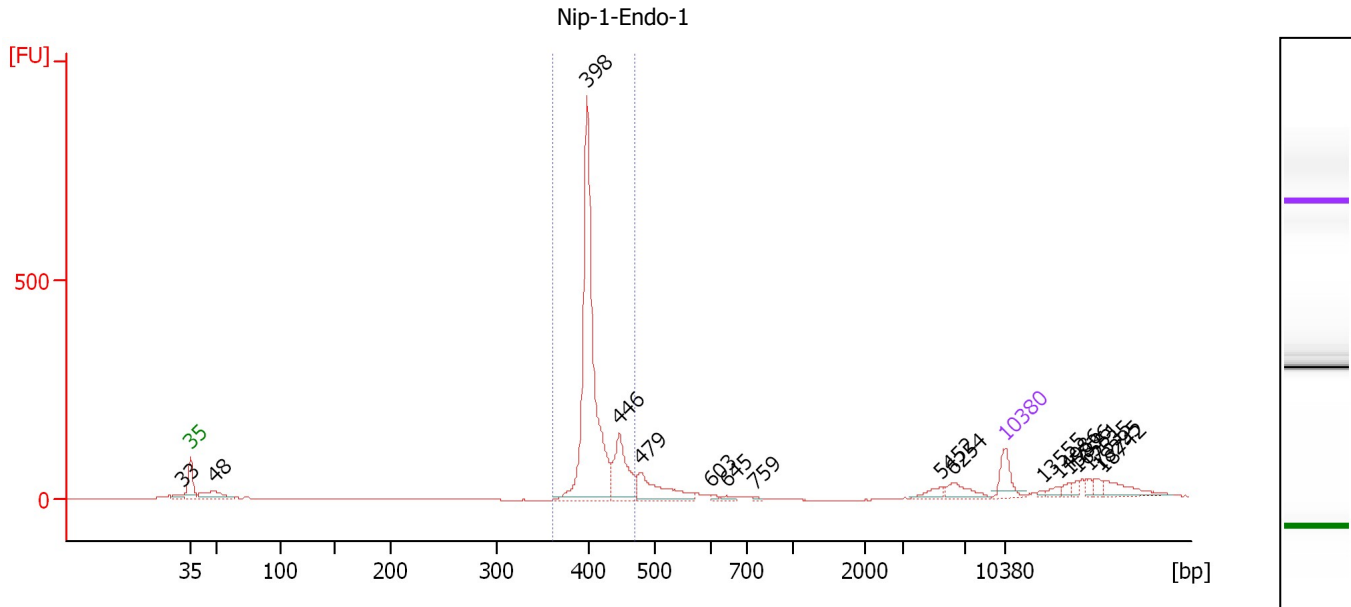
**Region table for sample 3 : Nip-1-BF-2**

From [bp]	To [bp]	Average Size [bp]	Molarity [pmol/l]	Conc. [pg/μl]	Corr. Area	% of Total	Size distribution in CV [%]	Color
377	474	419	1,590.8	438.74	364.0	52	6.0	Blue

Assay Class: High Sensitivity DNA Assay  
 Data Path: C:\...ents and Settings\Bioanalyzer\2012-08-27\2012-08-27\_003.xad

Created: 8/27/2012 12:37:30 PM  
 Modified: 8/27/2012 1:28:44 PM

**Electropherogram Summary Continued ...**



**Overall Results for sample 4 : Nip-1-Endo-1**

Number of peaks found: 17      Corr. Area 1: 1,467.0  
 Noise: 0.6

**Peak table for sample 4 : Nip-1-Endo-1**

Peak	Size [bp]	Conc. [pg/μl]	Molarity [pmol/l]	Observations
1	33	0.00	0.0	
2	35	125.00	5,411.3	Lower Marker
3	48	123.43	3,888.3	
4	398	1,201.53	4,578.0	
5	446	241.34	820.2	
6	479	184.13	582.6	
7	603	8.84	22.2	
8	645	12.84	30.2	
9	759	4.52	9.0	
10	5,452	32.24	9.0	
11	6,254	58.52	14.2	
12	10,380	75.00	10.9	Upper Marker
13	13,555	0.00	0.0	
14	14,986	0.00	0.0	
15	15,836	0.00	0.0	
16	16,551	0.00	0.0	
17	17,535	0.00	0.0	
18	18,295	0.00	0.0	
19	18,742	0.00	0.0	

**Region table for sample 4 : Nip-1-Endo-1**

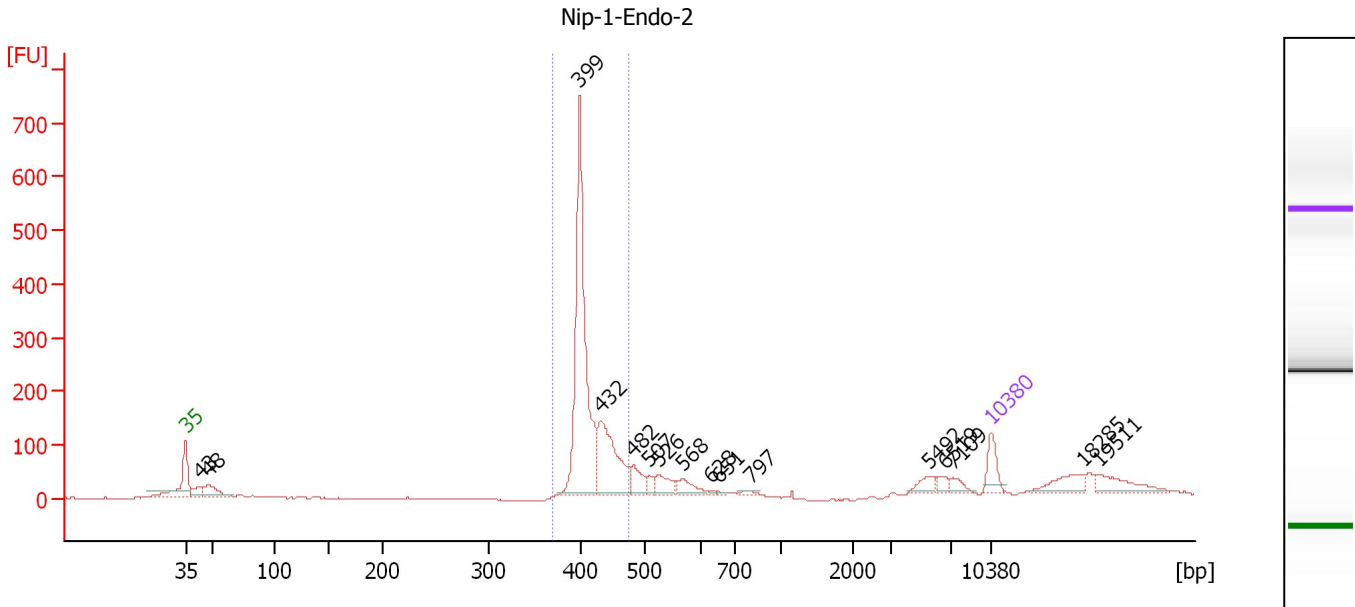
From [bp]	To [bp]	Average Size [bp]	Molarity [pmol/l]	Conc. [pg/μl]	Corr. Area	% of Total	Size distribution in CV [%]	Color
362	470	410	5,132.0	1,385.02	1,467.0	70	5.0	Blue



Assay Class: High Sensitivity DNA Assay  
 Data Path: C:\...ents and Settings\Bioanalyzer\2012-08-27\2012-08-27\_003.xad

Created: 8/27/2012 12:37:30 PM  
 Modified: 8/27/2012 1:28:44 PM

**Electropherogram Summary Continued ...**



**Overall Results for sample 5 : Nip-1-Endo-2**

Number of peaks found: 16                      Corr. Area 1: 1,273.7  
 Noise: 0.6

**Peak table for sample 5 : Nip-1-Endo-2**

Peak	Size [bp]	Conc. [pg/μl]	Molarity [pmol/l]	Observations
1	35	125.00	5,411.3	Lower Marker
2	43	71.79	2,520.1	
3	48	130.76	4,127.2	
4	399	1,079.90	4,098.5	
5	432	402.72	1,413.6	
6	482	90.36	284.3	
7	507	31.35	93.6	
8	526	75.90	218.7	
9	568	59.83	159.7	
10	628	5.29	12.8	
11	651	4.03	9.4	
12	797	10.30	19.6	
13	5,492	43.20	11.9	
14	6,519	27.13	6.3	
15	7,109	31.76	6.8	
16	10,380	75.00	10.9	Upper Marker
17	18,285	0.00	0.0	
18	19,511	0.00	0.0	

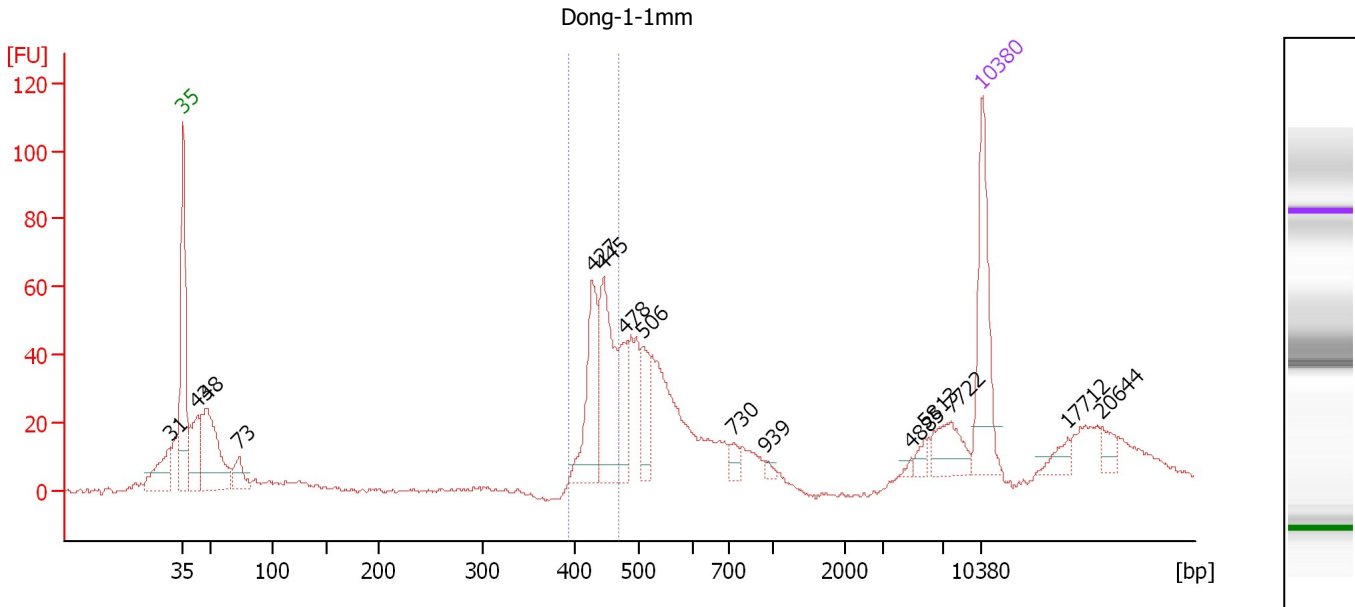
**Region table for sample 5 : Nip-1-Endo-2**

From [bp]	To [bp]	Average Size [bp]	Molarity [pmol/l]	Conc. [pg/μl]	Corr. Area	% of Total	Size distribution in CV [%]	Color
370	475	415	5,364.8	1,465.44	1,273.7	62	5.2	Blue

Assay Class: High Sensitivity DNA Assay  
 Data Path: C:\...ents and Settings\Bioanalyzer\2012-08-27\2012-08-27\_003.xad

Created: 8/27/2012 12:37:30 PM  
 Modified: 8/27/2012 1:28:44 PM

**Electropherogram Summary Continued ...**



**Overall Results for sample 6 : Dong-1-1mm**

Number of peaks found: 15                      Corr. Area 1: 200.9  
 Noise: 0.8

**Peak table for sample 6 : Dong-1-1mm**

Peak	Size [bp]	Conc. [pg/μl]	Molarity [pmol/l]	Observations
1	31	0.00	0.0	
2	35	125.00	5,411.3	Lower Marker
3	43	70.48	2,487.5	
4	48	138.22	4,325.0	
5	73	28.03	579.1	
6	427	90.22	319.9	
7	445	108.00	368.0	
8	478	42.55	134.7	
9	506	39.71	119.0	
10	730	11.16	23.2	
11	939	4.42	7.1	
12	4,885	2.69	0.8	
13	5,813	6.86	1.8	
14	7,722	30.81	6.0	
15	10,380	75.00	10.9	Upper Marker
16	17,712	0.00	0.0	
17	20,644	0.00	0.0	

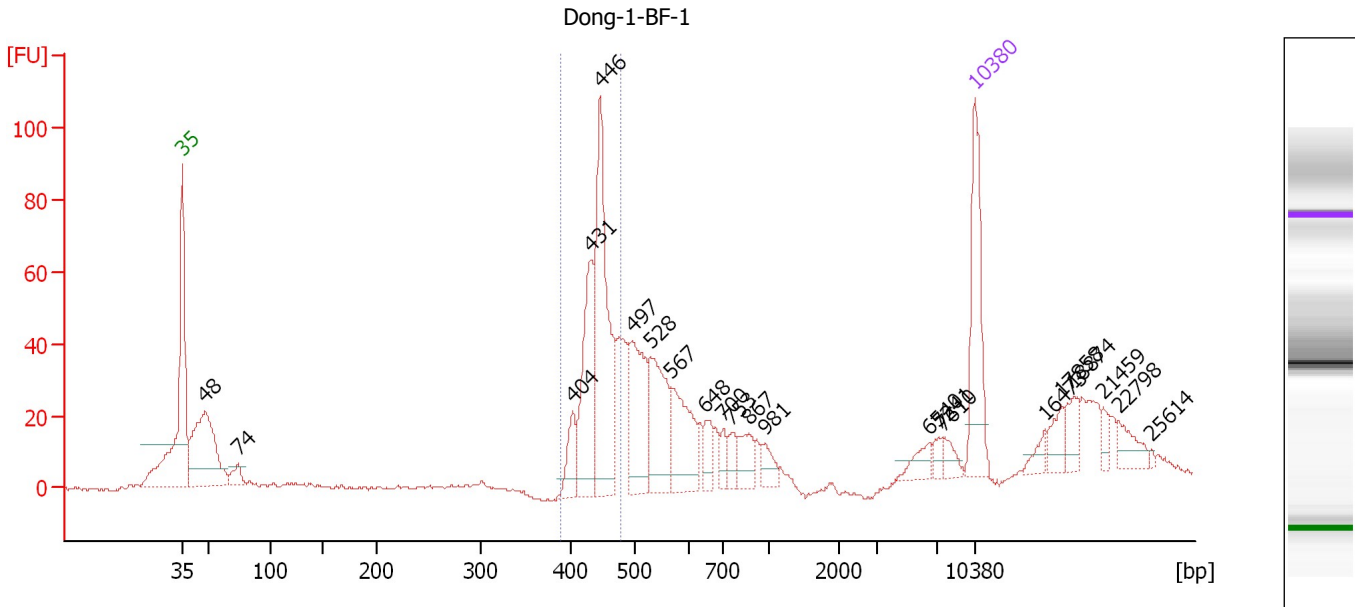
**Region table for sample 6 : Dong-1-1mm**

From [bp]	To [bp]	Average Size [bp]	Molarity [pmol/l]	Conc. [pg/μl]	Corr. Area	% of Total	Size distribution in CV [%]	Color
393	469	439	685.5	198.65	200.9	21	3.7	Blue

Assay Class: High Sensitivity DNA Assay  
 Data Path: C:\...ents and Settings\Bioanalyzer\2012-08-27\2012-08-27\_003.xad

Created: 8/27/2012 12:37:30 PM  
 Modified: 8/27/2012 1:28:44 PM

**Electropherogram Summary Continued ...**



**Overall Results for sample 7 : Dong-1-BF-1**

Number of peaks found: 22                      Corr. Area 1: 282.6  
 Noise: 0.5

**Peak table for sample 7 : Dong-1-BF-1**

Peak	Size [bp]	Conc. [pg/μl]	Molarity [pmol/l]	Observations
1	35	125.00	5,411.3	Lower Marker
2	48	179.91	5,653.9	
3	74	18.64	381.3	
4	404	30.30	113.7	
5	431	105.06	369.2	
6	446	191.48	650.4	
7	497	99.43	303.2	
8	528	88.03	252.7	
9	567	74.13	198.0	
10	648	20.22	47.3	
11	700	12.45	27.0	
12	753	14.20	28.6	
13	867	23.17	40.5	
14	981	16.18	25.0	
15	6,540	14.71	3.4	
16	7,241	7.37	1.5	
17	7,610	10.93	2.2	
18	10,380	75.00	10.9	Upper Marker
19	16,473	0.00	0.0	
20	17,858	0.00	0.0	
21	18,874	0.00	0.0	
22	21,459	0.00	0.0	
23	22,798	0.00	0.0	
24	25,614	0.00	0.0	

Assay Class: High Sensitivity DNA Assay  
Data Path: C:\...ents and Settings\Bioanalyzer\2012-08-27\2012-08-27\_003.xad

Created: 8/27/2012 12:37:30 PM  
Modified: 8/27/2012 1:28:44 PM

**Electropherogram Summary Continued ...**

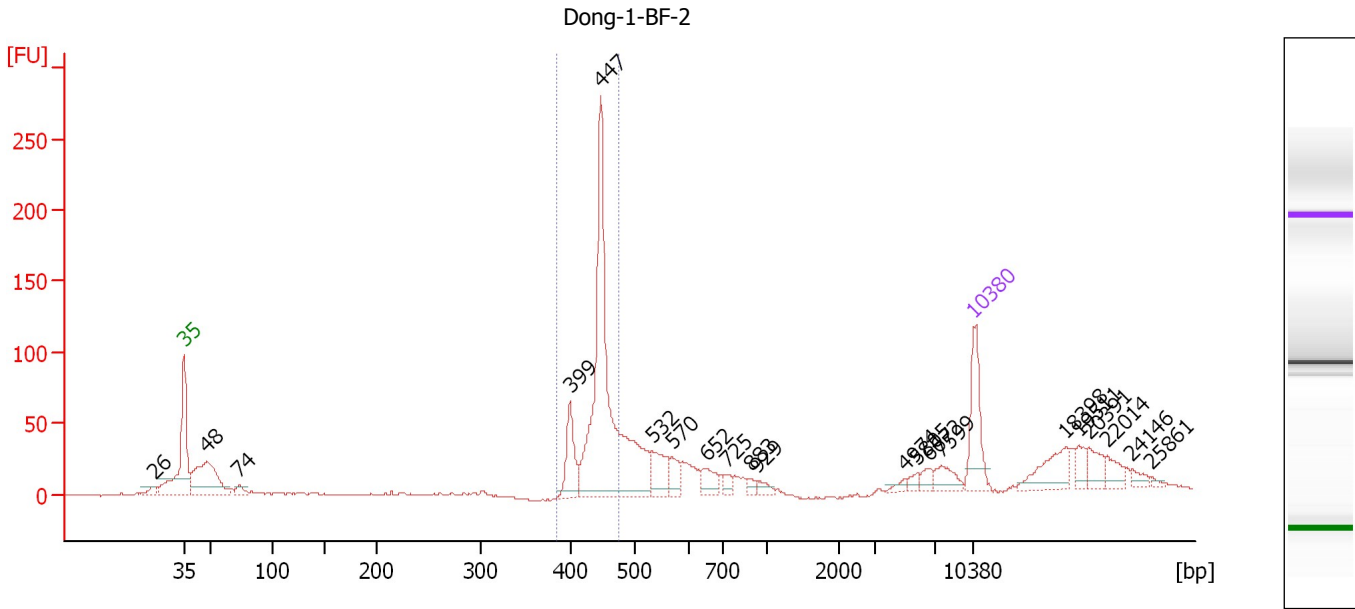
... Region table for sample 7 : Dong-1-BF-1

From [bp]	To [bp]	Average Size [bp]	Molarity [pmol/l]	Conc. [pg/ $\mu$ l]	Corr. Area	% of Total	Size distribution in CV [%]	Color
389	478	442	1,088.0	317.25	282.6	32	4.3	

Assay Class: High Sensitivity DNA Assay  
 Data Path: C:\...ents and Settings\Bioanalyzer\2012-08-27\2012-08-27\_003.xad

Created: 8/27/2012 12:37:30 PM  
 Modified: 8/27/2012 1:28:44 PM

**Electropherogram Summary Continued ...**



**Overall Results for sample 8 : Dong-1-BF-2**

Number of peaks found: 21                      Corr. Area 1: 442.9  
 Noise: 0.5


**Peak table for sample 8 : Dong-1-BF-2**

Peak	Size [bp]	Conc. [pg/μl]	Molarity [pmol/l]	Observations
1	26	0.00	0.0	
2	35	125.00	5,411.3	Lower Marker
3	48	191.22	6,002.7	
4	74	17.48	358.6	
5	399	77.46	294.1	
6	447	555.23	1,881.7	
7	532	57.68	164.2	
8	570	29.47	78.3	
9	652	30.18	70.1	
10	725	12.48	26.1	
11	883	8.59	14.7	
12	929	11.04	18.0	
13	4,974	6.99	2.1	
14	5,805	9.17	2.4	
15	6,672	13.69	3.1	
16	7,599	26.34	5.3	
17	10,380	75.00	10.9	Upper Marker
18	18,398	0.00	0.0	
19	19,511	0.00	0.0	
20	20,391	0.00	0.0	
21	22,014	0.00	0.0	
22	24,146	0.00	0.0	
23	25,861	0.00	0.0	

Assay Class: High Sensitivity DNA Assay  
Data Path: C:\...ents and Settings\Bioanalyzer\2012-08-27\2012-08-27\_003.xad

Created: 8/27/2012 12:37:30 PM  
Modified: 8/27/2012 1:28:44 PM

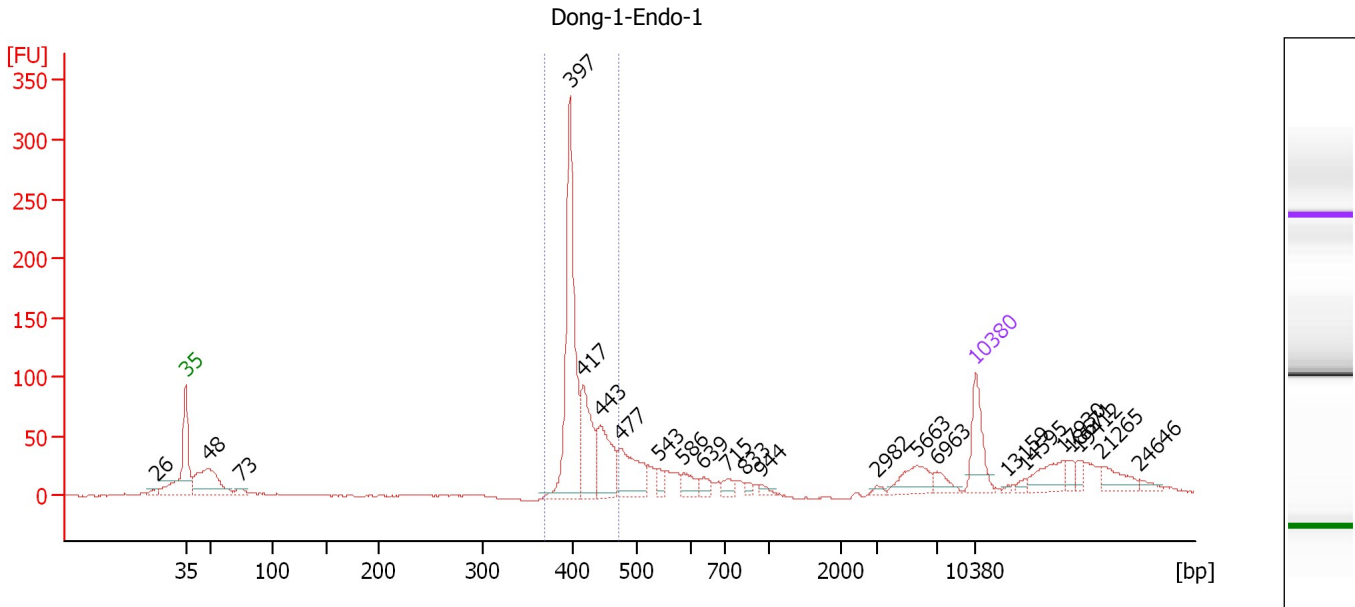
**Electropherogram Summary Continued ...****... Region table for sample 8 : Dong-1-BF-2**

<b>From [bp]</b>	<b>To [bp]</b>	<b>Average Size [bp]</b>	<b>Molarity [pmol/l]</b>	<b>Conc. [pg/μl]</b>	<b>Corr. Area</b>	<b>% of Total</b>	<b>Size distribution in CV [%]</b>	<b>Co lor</b>
384	476	441	1,590.7	461.81	442.9	38	4.5	

Assay Class: High Sensitivity DNA Assay  
 Data Path: C:\...ents and Settings\Bioanalyzer\2012-08-27\2012-08-27\_003.xad

Created: 8/27/2012 12:37:30 PM  
 Modified: 8/27/2012 1:28:44 PM

**Electropherogram Summary Continued ...**



**Overall Results for sample 9 : Dong-1-Endo-1**

Number of peaks found: 23                      Corr. Area 1: 623.6  
 Noise: 0.5

**Peak table for sample 9 : Dong-1-Endo-1**

Peak	Size [bp]	Conc. [pg/μl]	Molarity [pmol/l]	Observations
1	26	0.00	0.0	
2	35	125.00	5,411.3	Lower Marker
3	48	199.47	6,303.1	
4	73	16.70	344.7	
5	397	431.53	1,647.1	
6	417	153.51	558.3	
7	443	130.18	445.0	
8	477	122.03	387.9	
9	543	19.09	53.3	
10	586	33.67	87.0	
11	639	17.69	42.0	
12	715	19.75	41.8	
13	833	9.05	16.5	
14	944	9.75	15.6	
15	2,982	5.46	2.8	
16	5,663	53.11	14.2	
17	6,963	21.41	4.7	
18	10,380	75.00	10.9	Upper Marker
19	13,159	0.00	0.0	
20	14,595	0.00	0.0	
21	17,930	0.00	0.0	
22	18,671	0.00	0.0	
23	19,412	0.00	0.0	
24	21,265	0.00	0.0	
25	24,646	0.00	0.0	

Assay Class: High Sensitivity DNA Assay  
Data Path: C:\...ents and Settings\Bioanalyzer\2012-08-27\2012-08-27\_003.xad

Created: 8/27/2012 12:37:30 PM  
Modified: 8/27/2012 1:28:44 PM

**Electropherogram Summary Continued ...**

... Region table for sample 9 : Dong-1-Endo-1

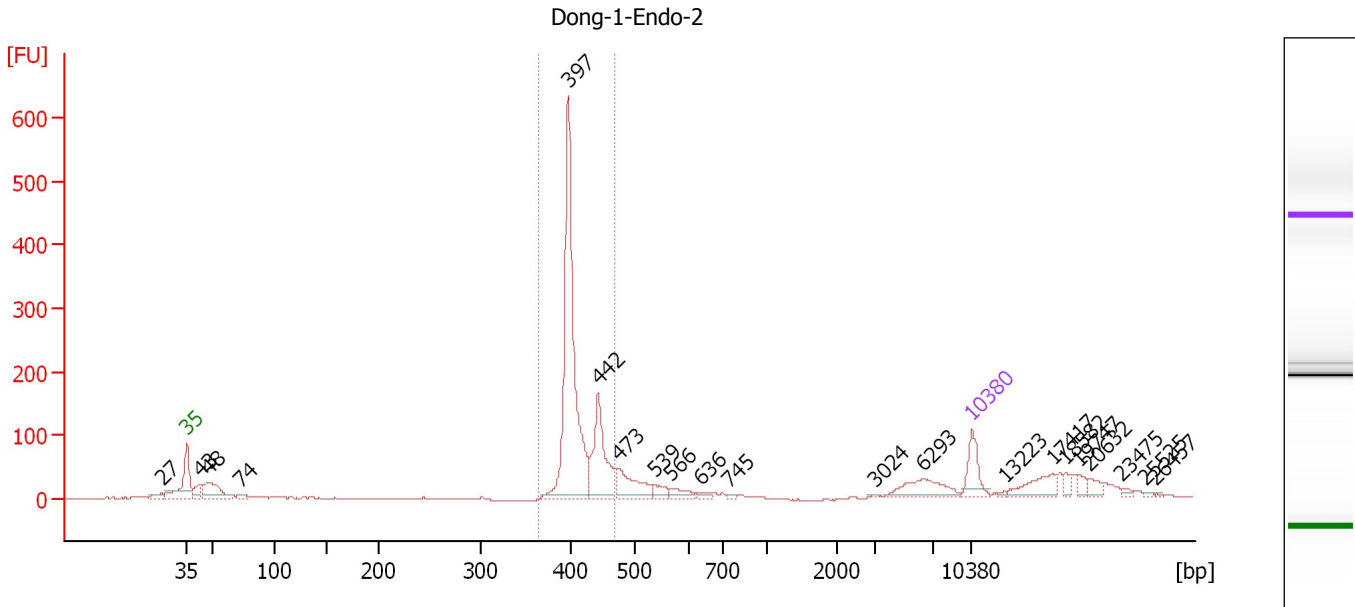
From [bp]	To [bp]	Average Size [bp]	Molarity [pmol/l]	Conc. [pg/μl]	Corr. Area	% of Total	Size distribution in CV [%]	Color
369	473	414	2,516.6	686.46	623.6	47	5.5	■



Assay Class: High Sensitivity DNA Assay  
 Data Path: C:\...ents and Settings\Bioanalyzer\2012-08-27\2012-08-27\_003.xad

Created: 8/27/2012 12:37:30 PM  
 Modified: 8/27/2012 1:28:44 PM

**Electropherogram Summary Continued ...**



**Overall Results for sample 10 : Dong-1-Endo-2**

Number of peaks found: 21                      Corr. Area 1: 1,044.4  
 Noise: 0.6

**Peak table for sample 10 : Dong-1-Endo-2**

Peak	Size [bp]	Conc. [pg/μl]	Molarity [pmol/l]	Observations
1	27	0.00	0.0	
2	35	125.00	5,411.3	Lower Marker
3	43	54.70	1,910.7	
4	48	148.79	4,663.8	
5	74	16.68	343.2	
6	397	866.83	3,311.6	
7	442	265.58	910.0	
8	473	131.37	420.6	
9	539	30.94	87.0	
10	566	32.35	86.6	
11	636	12.60	30.1	
12	745	5.70	11.6	
13	3,024	2.71	1.4	
14	6,293	94.56	22.8	
15	10,380	75.00	10.9	Upper Marker
16	13,223	0.00	0.0	
17	17,417	0.00	0.0	
18	18,582	0.00	0.0	
19	19,747	0.00	0.0	
20	20,632	0.00	0.0	
21	23,475	0.00	0.0	
22	25,525	0.00	0.0	
23	26,457	0.00	0.0	

Assay Class: High Sensitivity DNA Assay  
Data Path: C:\...ents and Settings\Bioanalyzer\2012-08-27\2012-08-27\_003.xad

Created: 8/27/2012 12:37:30 PM  
Modified: 8/27/2012 1:28:44 PM

**Electropherogram Summary Continued ...**

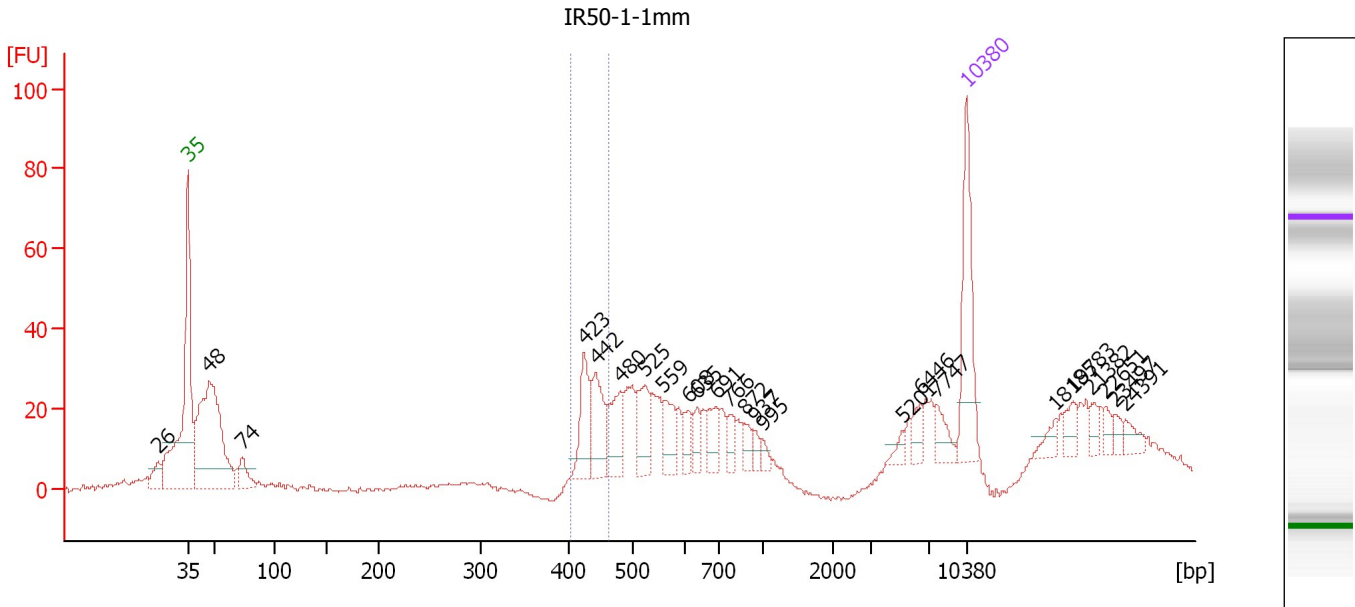
... Region table for sample 10 : Dong-1-Endo-2

From [bp]	To [bp]	Average Size [bp]	Molarity [pmol/l]	Conc. [pg/μl]	Corr. Area	% of Total	Size distribution in CV [%]	Color
364	469	411	4,125.9	1,116.95	1,044.4	58	5.3	■

Assay Class: High Sensitivity DNA Assay  
 Data Path: C:\...ents and Settings\Bioanalyzer\2012-08-27\2012-08-27\_003.xad

Created: 8/27/2012 12:37:30 PM  
 Modified: 8/27/2012 1:28:44 PM

**Electropherogram Summary Continued ...**



**Overall Results for sample 11 : IR50-1-1mm**

Number of peaks found: 24      Corr. Area 1: 84.4  
 Noise: 0.5

**Peak table for sample 11 : IR50-1-1mm**

Peak	Size [bp]	Conc. [pg/μl]	Molarity [pmol/l]	Observations
1	26	0.00	0.0	
2	35	125.00	5,411.3	Lower Marker
3	48	300.76	9,589.9	
4	74	29.94	616.1	
5	423	54.90	196.5	
6	442	60.44	207.2	
7	480	46.03	145.2	
8	525	46.37	133.9	
9	559	32.27	87.5	
10	608	17.62	43.9	
11	635	17.76	42.4	
12	691	27.67	60.7	
13	766	15.49	30.6	
14	872	12.66	22.0	
15	937	7.58	12.3	
16	995	6.55	10.0	
17	5,201	7.09	2.1	
18	6,446	13.41	3.2	
19	7,747	17.48	3.4	
20	10,380	75.00	10.9	Upper Marker
21	18,185	0.00	0.0	
22	19,783	0.00	0.0	
23	21,382	0.00	0.0	
24	22,651	0.00	0.0	
25	23,497	0.00	0.0	
26	24,391	0.00	0.0	

Assay Class: High Sensitivity DNA Assay  
Data Path: C:\...ents and Settings\Bioanalyzer\2012-08-27\2012-08-27\_003.xad

Created: 8/27/2012 12:37:30 PM  
Modified: 8/27/2012 1:28:44 PM

**Electropherogram Summary Continued ...**

... Region table for sample 11 : IR50-1-1mm

From [bp]	To [bp]	Average Size [bp]	Molarity [pmol/l]	Conc. [pg/ $\mu$ l]	Corr. Area	% of Total	Size distribution in CV [%]	Color
401	463	436	414.1	119.28	84.4	11	3.2	■

Assay Class: High Sensitivity DNA Assay  
Data Path: C:\...ents and Settings\Bioanalyzer\2012-08-27\2012-08-27\_003.xad

Created: 8/27/2012 12:37:30 PM  
Modified: 8/27/2012 1:28:44 PM

**Gel Image**

