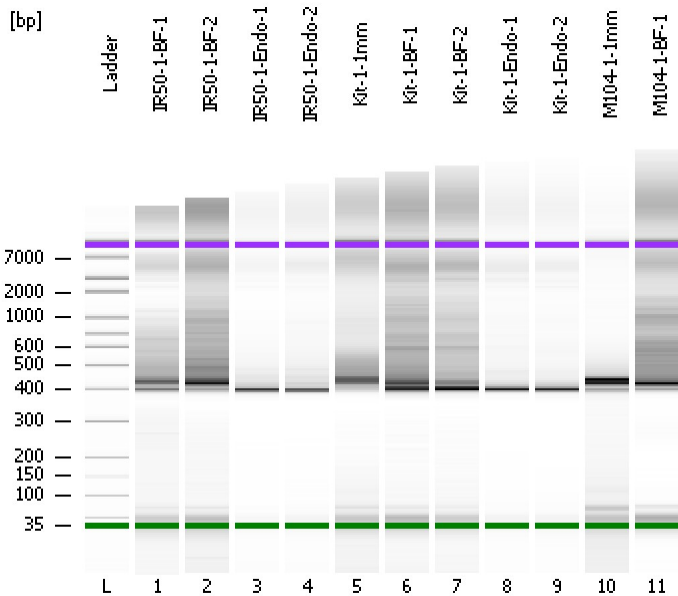


Assay Class: High Sensitivity DNA Assay  
Data Path: C:\...ents and Settings\Bioanalyzer\2012-08-27\2012-08-27\_004.xad

Created: 8/27/2012 1:30:45 PM  
Modified: 8/27/2012 2:21:36 PM

**Electrophoresis File Run Summary**



Instrument Information:

Instrument Name: DE13701086      Firmware: C.01.069  
Serial#: DE13701086      Type: G2938B

Assay Information:

Assay Origin Path: C:\Program Files\Agilent\2100 bioanalyzer\2100 expert\assays\dsDNA\High Sensitivity DNA.xsy  
Assay Class: High Sensitivity DNA Assay  
Version: 1.03  
Assay Comments: Copyright © 2003-2010 Agilent Technologies

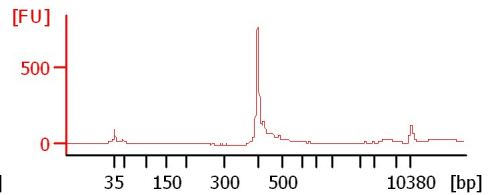
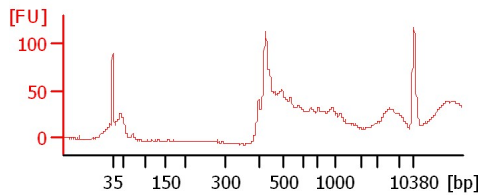
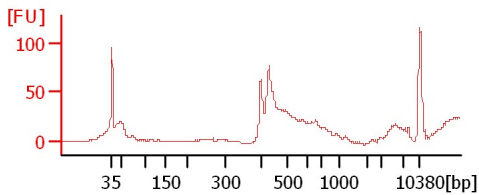
Chip Information:

Chip Lot #:   
Reagent Kit Lot #:   
Chip Comments:

**IR50-1-BF-1**

**IR50-1-BF-2**

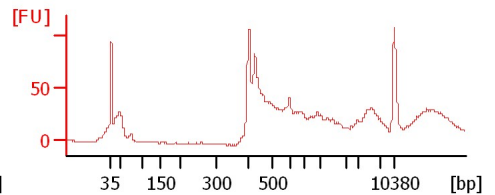
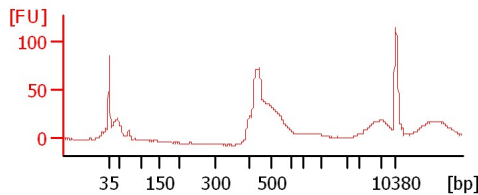
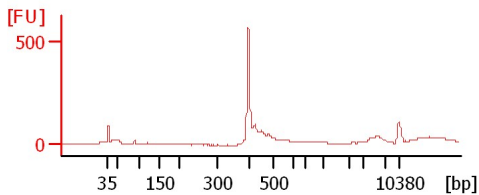
**IR50-1-Endo-1**



**IR50-1-Endo-2**

**Kit-1-1mm**

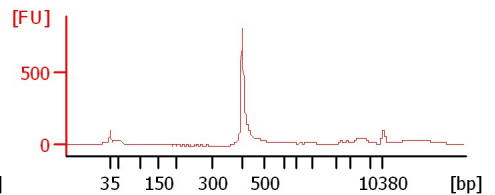
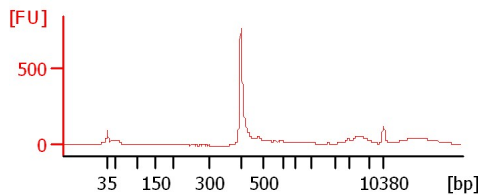
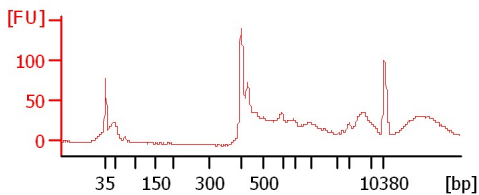
**Kit-1-BF-1**



**Kit-1-BF-2**

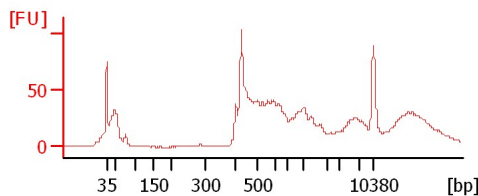
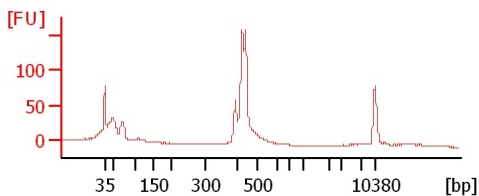
**Kit-1-Endo-1**

**Kit-1-Endo-2**



**M104-1-1mm**

**M104-1-BF-1**



Assay Class: High Sensitivity DNA Assay  
 Data Path: C:\...ents and Settings\Bioanalyzer\2012-08-27\2012-08-27\_004.xad

Created: 8/27/2012 1:30:45 PM  
 Modified: 8/27/2012 2:21:36 PM

**Electrophoresis File Run Summary (Chip Summary)**

| Sample Name   | Sample Comment | Rest. Digest             | Status | Observation | Result Label | Result Color |
|---------------|----------------|--------------------------|--------|-------------|--------------|--------------|
| IR50-1-BF-1   |                | <input type="checkbox"/> | ✓      |             |              |              |
| IR50-1-BF-2   |                | <input type="checkbox"/> | ✓      |             |              |              |
| IR50-1-Endo-1 |                | <input type="checkbox"/> | ✓      |             |              |              |
| IR50-1-Endo-2 |                | <input type="checkbox"/> | ✓      |             |              |              |
| Kit-1-1mm     |                | <input type="checkbox"/> | ✓      |             |              |              |
| Kit-1-BF-1    |                | <input type="checkbox"/> | ✓      |             |              |              |
| Kit-1-BF-2    |                | <input type="checkbox"/> | ✓      |             |              |              |
| Kit-1-Endo-1  |                | <input type="checkbox"/> | ✓      |             |              |              |
| Kit-1-Endo-2  |                | <input type="checkbox"/> | ✓      |             |              |              |
| M104-1-1mm    |                | <input type="checkbox"/> | ✓      |             |              |              |
| M104-1-BF-1   |                | <input type="checkbox"/> | ✓      |             |              |              |
| Ladder        |                | <input type="checkbox"/> | ✓      |             |              |              |

**Chip Lot #**

**Reagent Kit Lot #**

**Chip Comments :**

Assay Class: High Sensitivity DNA Assay  
Data Path: C:\...ents and Settings\Bioanalyzer\2012-08-27\2012-08-27\_004.xad

Created: 8/27/2012 1:30:45 PM  
Modified: 8/27/2012 2:21:36 PM

**Electrophoresis Assay Details**

**General Analysis Settings**

Number of Available Sample and Ladder Wells (Max.) : 12  
Minimum Visible Range [s] : 32  
Maximum Visible Range [s] : 138  
Start Analysis Time Range [s] : 33  
End Analysis Time Range [s] : 137.5  
Ladder Concentration [pg/μl] : 1950  
Uses Standard Area for Ladder Fragments  
Lower Marker Concentration [pg/μl] : 125  
Upper Marker Concentration [pg/μl] : 75  
Used Upper Marker for Quantitation  
Standard Curve Fit is Point to Point  
Show Data Aligned to Lower and Upper Marker

**Integrator Settings**

Integration Start Time [s] : 33.05  
Integration End Time [s] : 137  
Slope Threshold : 0.8  
Height Threshold [FU] : 5  
Area Threshold : 0.1  
Width Threshold [s] : 0.6  
Baseline Plateau [s] : 0.5

**Filter Settings**

Filter Width [s] : 0.5  
Polynomial Order : 4

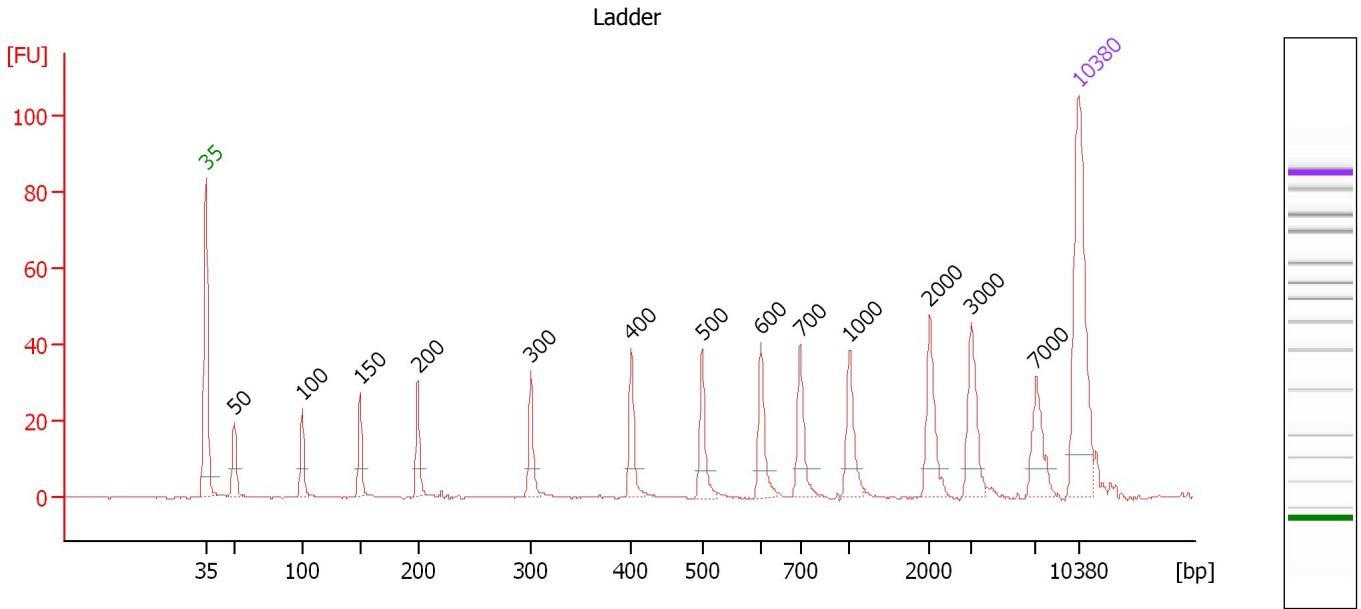
**Ladder**

| Ladder Peak | Size  | Area |
|-------------|-------|------|
| 1           | 35    | 160  |
| 2           | 50    | 210  |
| 3           | 100   | 208  |
| 4           | 150   | 221  |
| 5           | 200   | 242  |
| 6           | 300   | 270  |
| 7           | 400   | 305  |
| 8           | 500   | 306  |
| 9           | 600   | 336  |
| 10          | 700   | 321  |
| 11          | 1000  | 366  |
| 12          | 2000  | 413  |
| 13          | 3000  | 411  |
| 14          | 7000  | 400  |
| 15          | 10380 | 214  |

Assay Class: High Sensitivity DNA Assay  
 Data Path: C:\...ents and Settings\Bioanalyzer\2012-08-27\2012-08-27\_004.xad

Created: 8/27/2012 1:30:45 PM  
 Modified: 8/27/2012 2:21:36 PM

**Electropherogram Summary**



**Overall Results for Ladder**

Noise: 0.1

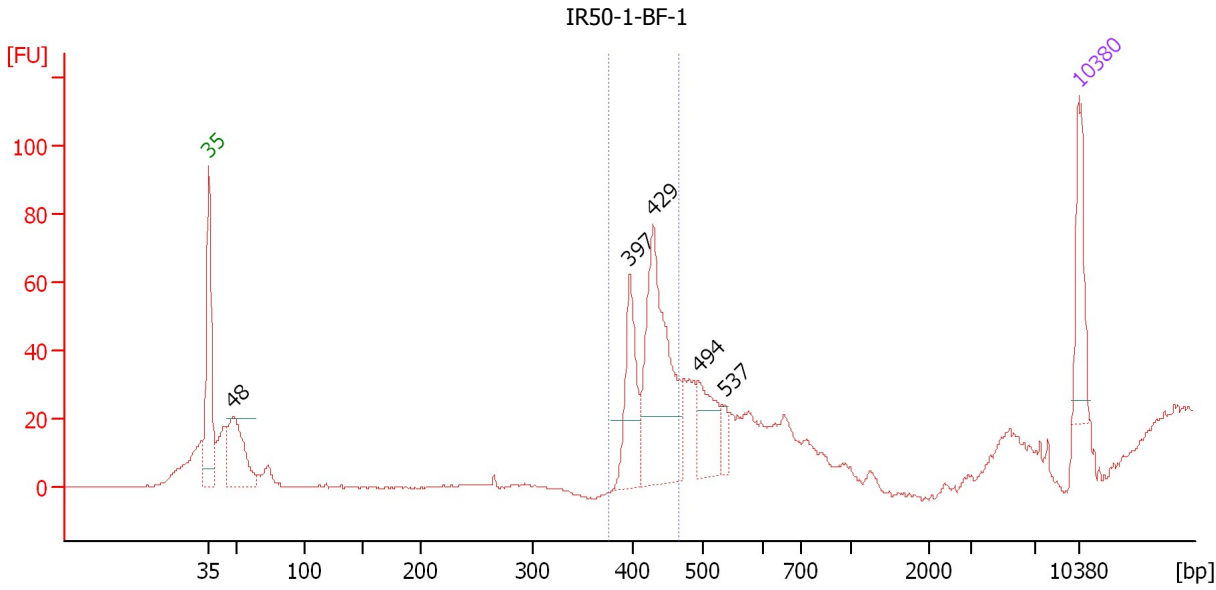
**Peak table for Ladder**

| Peak | Size [bp] | Conc. [pg/μl] | Molarity [pmol/l] | Observations |
|------|-----------|---------------|-------------------|--------------|
| 1    | 35        | 125.00        | 5,411.3           | Lower Marker |
| 2    | 50        | 150.00        | 4,545.5           | Ladder Peak  |
| 3    | 100       | 150.00        | 2,272.7           | Ladder Peak  |
| 4    | 150       | 150.00        | 1,515.2           | Ladder Peak  |
| 5    | 200       | 150.00        | 1,136.4           | Ladder Peak  |
| 6    | 300       | 150.00        | 757.6             | Ladder Peak  |
| 7    | 400       | 150.00        | 568.2             | Ladder Peak  |
| 8    | 500       | 150.00        | 454.5             | Ladder Peak  |
| 9    | 600       | 150.00        | 378.8             | Ladder Peak  |
| 10   | 700       | 150.00        | 324.7             | Ladder Peak  |
| 11   | 1,000     | 150.00        | 227.3             | Ladder Peak  |
| 12   | 2,000     | 150.00        | 113.6             | Ladder Peak  |
| 13   | 3,000     | 150.00        | 75.8              | Ladder Peak  |
| 14   | 7,000     | 150.00        | 32.5              | Ladder Peak  |
| 15   | 10,380    | 75.00         | 10.9              | Upper Marker |

Assay Class: High Sensitivity DNA Assay  
 Data Path: C:\...ents and Settings\Bioanalyzer\2012-08-27\2012-08-27\_004.xad

Created: 8/27/2012 1:30:45 PM  
 Modified: 8/27/2012 2:21:36 PM

**Electropherogram Summary Continued ...**



**Setpoint Deviations for sample 1 : IR50-1-BF-1**

Height Threshold [FU] : 20

**Overall Results for sample 1 : IR50-1-BF-1**

Number of peaks found: 5                      Corr. Area 1: 206.1  
 Noise: 0.2

**Peak table for sample 1 : IR50-1-BF-1**

| Peak | Size [bp] | Conc. [pg/μl] | Molarity [pmol/l] | Observations |
|------|-----------|---------------|-------------------|--------------|
| 1    | 35        | 125.00        | 5,411.3           | Lower Marker |
| 2    | 48        | 175.73        | 5,539.5           |              |
| 3    | 397       | 142.52        | 543.5             |              |
| 4    | 429       | 336.88        | 1,188.8           |              |
| 5    | 494       | 99.02         | 304.0             |              |
| 6    | 537       | 23.08         | 65.2              |              |
| 7    | 10,380    | 75.00         | 10.9              | Upper Marker |

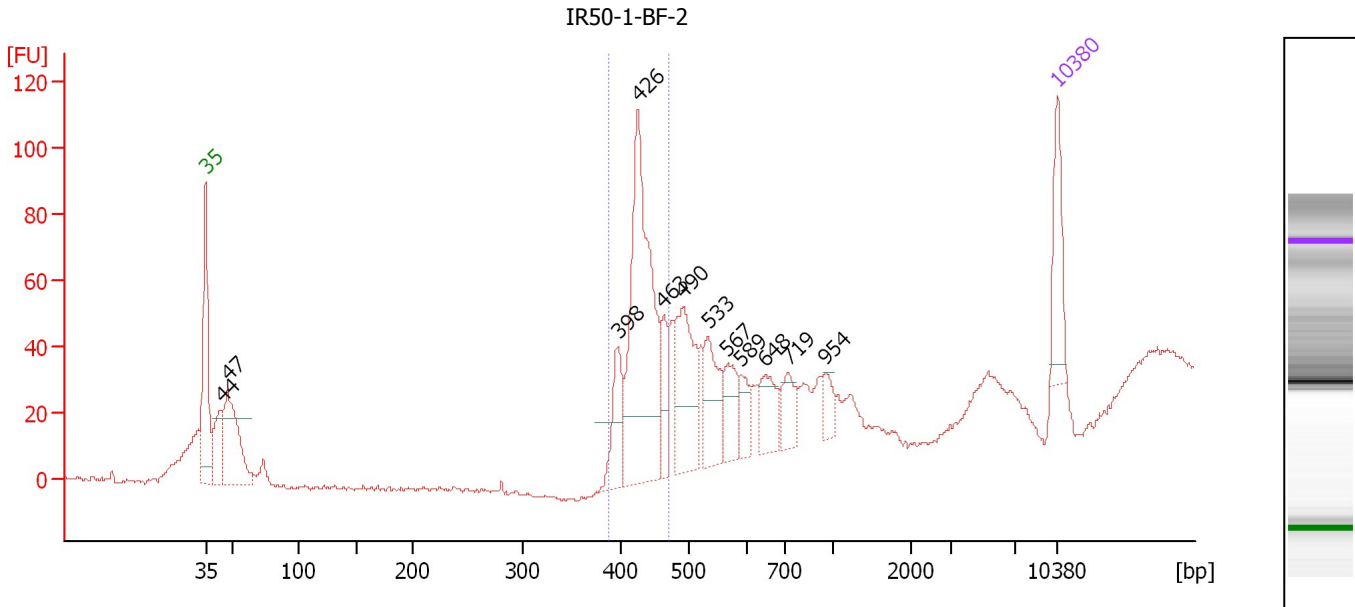
**Region table for sample 1 : IR50-1-BF-1**

| From [bp] | To [bp] | Average Size [bp] | Molarity [pmol/l] | Conc. [pg/μl] | Corr. Area | % of Total | Size distribution in CV [%] | Color |
|-----------|---------|-------------------|-------------------|---------------|------------|------------|-----------------------------|-------|
| 377       | 467     | 426               | 1,196.9           | 336.22        | 206.1      | 47         | 4.8                         | Blue  |

Assay Class: High Sensitivity DNA Assay  
 Data Path: C:\...ents and Settings\Bioanalyzer\2012-08-27\2012-08-27\_004.xad

Created: 8/27/2012 1:30:45 PM  
 Modified: 8/27/2012 2:21:36 PM

**Electropherogram Summary Continued ...**



**Setpoint Deviations for sample 2 : IR50-1-BF-2**

Height Threshold [FU] : 20

**Overall Results for sample 2 : IR50-1-BF-2**

Number of peaks found: 12      Corr. Area 1: 248.3  
 Noise: 0.5

**Peak table for sample 2 : IR50-1-BF-2**

| Peak | Size [bp] | Conc. [pg/μl] | Molarity [pmol/l] | Observations |
|------|-----------|---------------|-------------------|--------------|
| 1    | 35        | 125.00        | 5,411.3           | Lower Marker |
| 2    | 44        | 113.45        | 3,906.8           |              |
| 3    | 47        | 227.23        | 7,340.8           |              |
| 4    | 398       | 95.70         | 364.5             |              |
| 5    | 426       | 460.75        | 1,638.0           |              |
| 6    | 463       | 62.19         | 203.4             |              |
| 7    | 490       | 179.11        | 553.6             |              |
| 8    | 533       | 107.39        | 305.5             |              |
| 9    | 567       | 67.46         | 180.3             |              |
| 10   | 589       | 38.36         | 98.7              |              |
| 11   | 648       | 66.34         | 155.1             |              |
| 12   | 719       | 47.64         | 100.3             |              |
| 13   | 954       | 29.94         | 47.5              |              |
| 14   | 10,380    | 75.00         | 10.9              | Upper Marker |

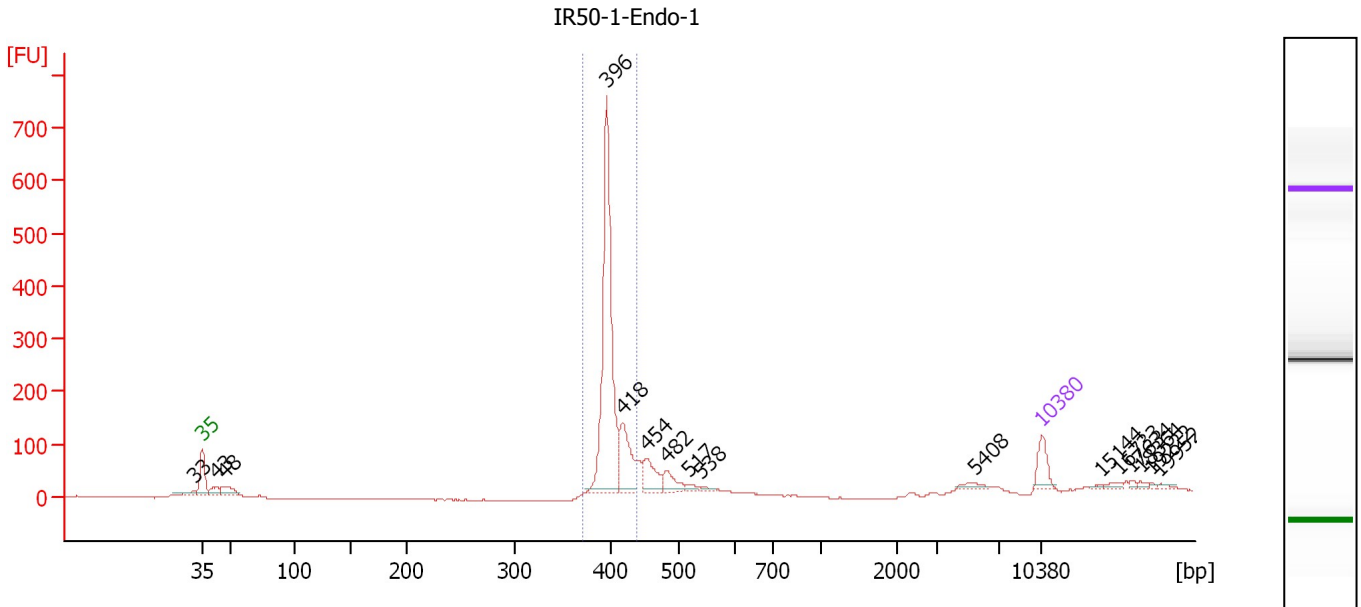
**Region table for sample 2 : IR50-1-BF-2**

| From [bp] | To [bp] | Average Size [bp] | Molarity [pmol/l] | Conc. [pg/μl] | Corr. Area | % of Total | Size distribution in CV [%] | Color |
|-----------|---------|-------------------|-------------------|---------------|------------|------------|-----------------------------|-------|
| 389       | 472     | 433               | 1,450.9           | 413.99        | 248.3      | 42         | 4.3                         | Blue  |

Assay Class: High Sensitivity DNA Assay  
 Data Path: C:\...ents and Settings\Bioanalyzer\2012-08-27\2012-08-27\_004.xad

Created: 8/27/2012 1:30:45 PM  
 Modified: 8/27/2012 2:21:36 PM

**Electropherogram Summary Continued ...**



**Overall Results for sample 3 : IR50-1-Endo-1**

Number of peaks found: 16      Corr. Area 1: 1,026.0  
 Noise: 0.6

**Peak table for sample 3 : IR50-1-Endo-1**

| Peak | Size [bp] | Conc. [pg/μl] | Molarity [pmol/l] | Observations |
|------|-----------|---------------|-------------------|--------------|
| 1    | 33        | 0.00          | 0.0               |              |
| 2    | 35        | 125.00        | 5,411.3           | Lower Marker |
| 3    | 43        | 55.59         | 1,960.8           |              |
| 4    | 48        | 85.30         | 2,711.1           |              |
| 5    | 396       | 1,044.46      | 3,997.1           |              |
| 6    | 418       | 238.23        | 864.1             |              |
| 7    | 454       | 126.54        | 422.6             |              |
| 8    | 482       | 77.90         | 244.9             |              |
| 9    | 517       | 19.38         | 56.8              |              |
| 10   | 538       | 14.69         | 41.3              |              |
| 11   | 5,408     | 23.40         | 6.6               |              |
| 12   | 10,380    | 75.00         | 10.9              | Upper Marker |
| 13   | 15,144    | 0.00          | 0.0               |              |
| 14   | 16,733    | 0.00          | 0.0               |              |
| 15   | 17,634    | 0.00          | 0.0               |              |
| 16   | 18,364    | 0.00          | 0.0               |              |
| 17   | 19,222    | 0.00          | 0.0               |              |
| 18   | 19,952    | 0.00          | 0.0               |              |

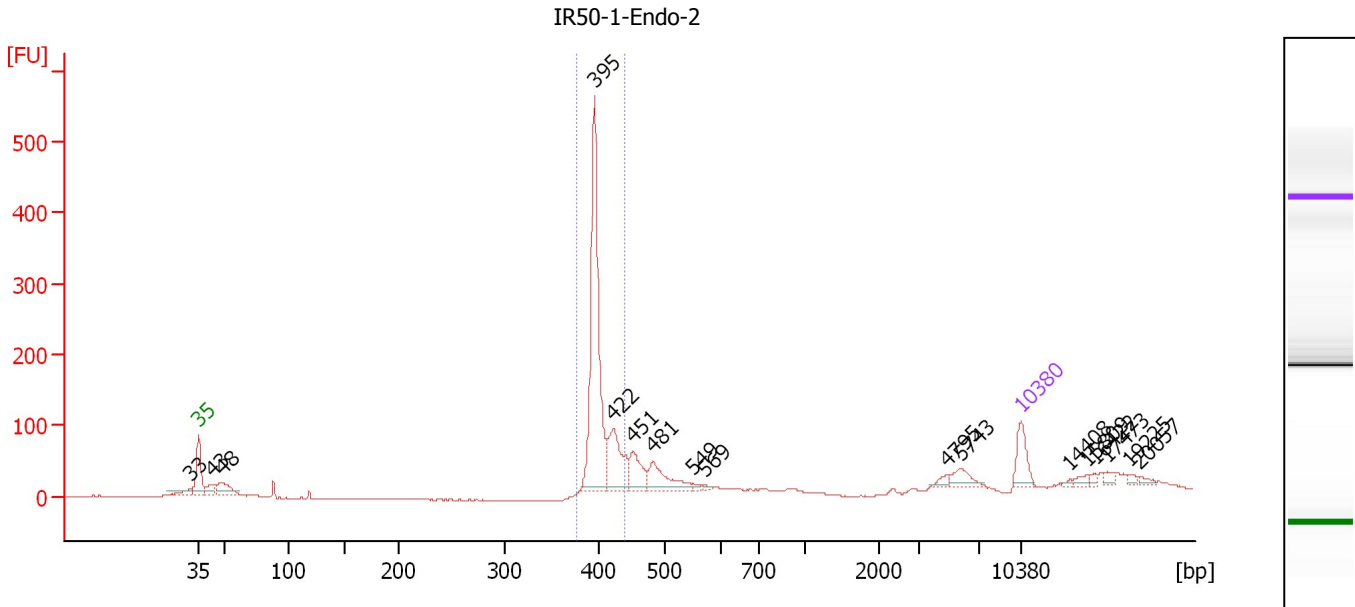
**Region table for sample 3 : IR50-1-Endo-1**

| From [bp] | To [bp] | Average Size [bp] | Molarity [pmol/l] | Conc. [pg/μl] | Corr. Area | % of Total | Size distribution in CV [%] | Color |
|-----------|---------|-------------------|-------------------|---------------|------------|------------|-----------------------------|-------|
| 370       | 438     | 402               | 4,845.1           | 1,283.59      | 1,026.0    | 68         | 2.9                         | Blue  |

Assay Class: High Sensitivity DNA Assay  
 Data Path: C:\...ents and Settings\Bioanalyzer\2012-08-27\2012-08-27\_004.xad

Created: 8/27/2012 1:30:45 PM  
 Modified: 8/27/2012 2:21:36 PM

**Electropherogram Summary Continued ...**



**Overall Results for sample 4 : IR50-1-Endo-2**

Number of peaks found: 17      Corr. Area 1: 713.7  
 Noise: 0.6

**Peak table for sample 4 : IR50-1-Endo-2**

| Peak | Size [bp] | Conc. [pg/μl] | Molarity [pmol/l] | Observations |
|------|-----------|---------------|-------------------|--------------|
| 1    | 33        | 0.00          | 0.0               |              |
| 2    | 35        | 125.00        | 5,411.3           | Lower Marker |
| 3    | 43        | 51.85         | 1,834.8           |              |
| 4    | 48        | 102.69        | 3,246.5           |              |
| 5    | 395       | 755.51        | 2,895.7           |              |
| 6    | 422       | 217.14        | 779.4             |              |
| 7    | 451       | 109.72        | 368.7             |              |
| 8    | 481       | 128.16        | 403.5             |              |
| 9    | 549       | 9.88          | 27.2              |              |
| 10   | 569       | 8.17          | 21.7              |              |
| 11   | 4,795     | 16.11         | 5.1               |              |
| 12   | 5,743     | 46.37         | 12.2              |              |
| 13   | 10,380    | 75.00         | 10.9              | Upper Marker |
| 14   | 14,408    | 0.00          | 0.0               |              |
| 15   | 15,809    | 0.00          | 0.0               |              |
| 16   | 16,422    | 0.00          | 0.0               |              |
| 17   | 17,473    | 0.00          | 0.0               |              |
| 18   | 19,225    | 0.00          | 0.0               |              |
| 19   | 20,057    | 0.00          | 0.0               |              |

**Region table for sample 4 : IR50-1-Endo-2**

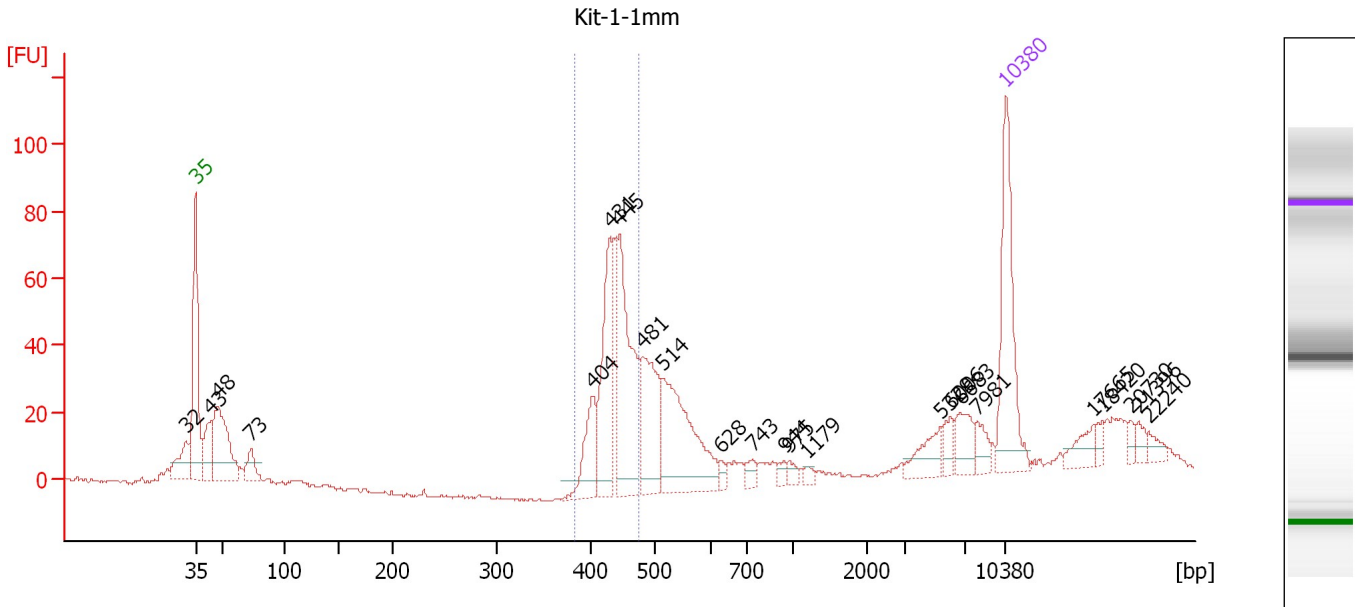
| From [bp] | To [bp] | Average Size [bp] | Molarity [pmol/l] | Conc. [pg/μl] | Corr. Area | % of Total | Size distribution in CV [%] | Color |
|-----------|---------|-------------------|-------------------|---------------|------------|------------|-----------------------------|-------|
| 376       | 439     | 402               | 3,591.5           | 952.11        | 713.7      | 54         | 3.1                         | Blue  |



Assay Class: High Sensitivity DNA Assay  
 Data Path: C:\...ents and Settings\Bioanalyzer\2012-08-27\2012-08-27\_004.xad

Created: 8/27/2012 1:30:45 PM  
 Modified: 8/27/2012 2:21:36 PM

**Electropherogram Summary Continued ...**



**Overall Results for sample 5 : Kit-1-1mm**

Number of peaks found: 23                      Corr. Area 1: 266.1  
 Noise: 0.4

**Peak table for sample 5 : Kit-1-1mm**

| Peak | Size [bp] | Conc. [pg/μl] | Molarity [pmol/l] | Observations |
|------|-----------|---------------|-------------------|--------------|
| 1    | 32        | 0.00          | 0.0               |              |
| 2    | 35        | 125.00        | 5,411.3           | Lower Marker |
| 3    | 43        | 42.83         | 1,501.0           |              |
| 4    | 48        | 107.75        | 3,414.8           |              |
| 5    | 73        | 22.44         | 464.2             |              |
| 6    | 404       | 44.27         | 165.9             |              |
| 7    | 431       | 97.53         | 342.8             |              |
| 8    | 445       | 130.77        | 445.3             |              |
| 9    | 481       | 81.19         | 256.0             |              |
| 10   | 514       | 119.96        | 353.9             |              |
| 11   | 628       | 4.96          | 12.0              |              |
| 12   | 743       | 8.19          | 16.7              |              |
| 13   | 944       | 4.78          | 7.7               |              |
| 14   | 975       | 5.31          | 8.2               |              |
| 15   | 1,179     | 4.01          | 5.1               |              |
| 16   | 5,329     | 20.40         | 5.8               |              |
| 17   | 6,006     | 10.53         | 2.7               |              |
| 18   | 6,683     | 20.17         | 4.6               |              |
| 19   | 7,981     | 11.90         | 2.3               |              |
| 20   | 10,380    | 75.00         | 10.9              | Upper Marker |
| 21   | 17,665    | 0.00          | 0.0               |              |
| 22   | 18,420    | 0.00          | 0.0               |              |
| 23   | 20,730    | 0.00          | 0.0               |              |
| 24   | 21,396    | 0.00          | 0.0               |              |
| 25   | 22,240    | 0.00          | 0.0               |              |

Assay Class: High Sensitivity DNA Assay  
Data Path: C:\...ents and Settings\Bioanalyzer\2012-08-27\2012-08-27\_004.xad

Created: 8/27/2012 1:30:45 PM  
Modified: 8/27/2012 2:21:36 PM

**Electropherogram Summary Continued ...**

... Region table for sample 5 :

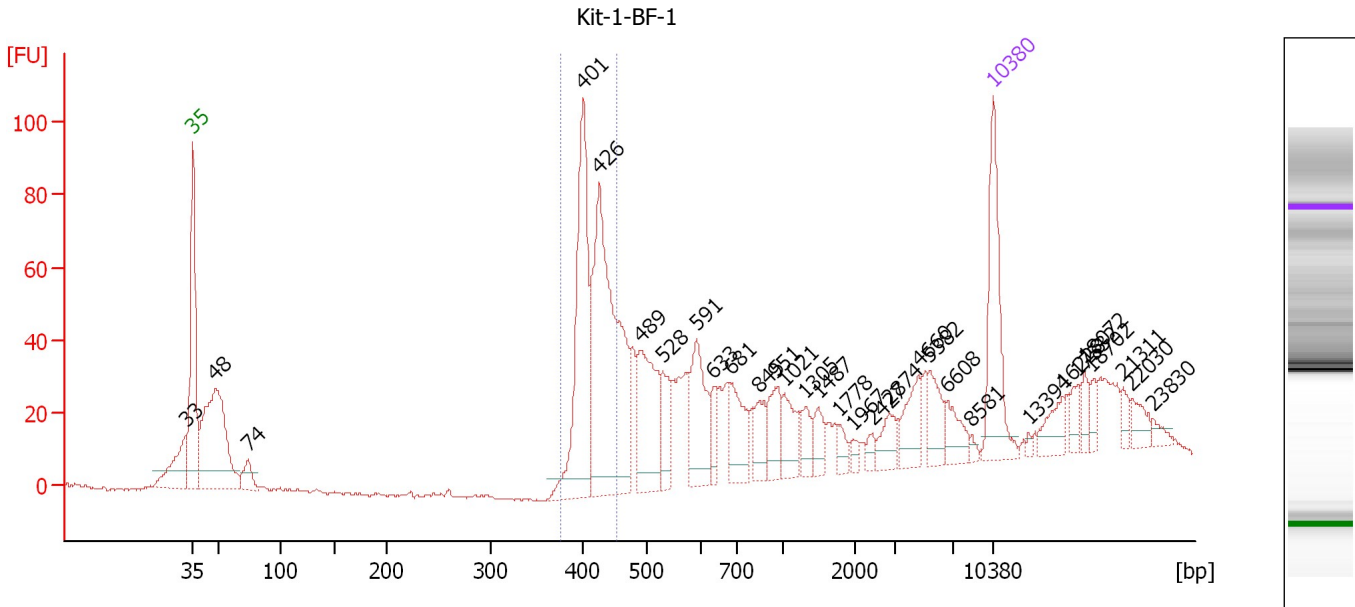
Kit-1-1mm

| From [bp] | To [bp] | Average Size [bp] | Molarity [pmol/l] | Conc. [pg/μl] | Corr. Area | % of Total | Size distribution in CV [%] | Color |
|-----------|---------|-------------------|-------------------|---------------|------------|------------|-----------------------------|-------|
| 383       | 474     | 437               | 863.9             | 249.08        | 266.1      | 33         | 4.4                         | ■     |

Assay Class: High Sensitivity DNA Assay  
 Data Path: C:\...ents and Settings\Bioanalyzer\2012-08-27\2012-08-27\_004.xad

Created: 8/27/2012 1:30:45 PM  
 Modified: 8/27/2012 2:21:36 PM

**Electropherogram Summary Continued ...**



**Overall Results for sample 6 : Kit-1-BF-1**

Number of peaks found: 31                      Corr. Area 1: 312.6  
 Noise: 0.4

**Peak table for sample 6 : Kit-1-BF-1**

| Peak | Size [bp] | Conc. [pg/μl] | Molarity [pmol/l] | Observations |
|------|-----------|---------------|-------------------|--------------|
| 1    | 33        | 0.00          | 0.0               |              |
| 2    | 35        | 125.00        | 5,411.3           | Lower Marker |
| 3    | 48        | 235.08        | 7,424.7           |              |
| 4    | 74        | 25.61         | 525.6             |              |
| 5    | 401       | 189.84        | 716.7             |              |
| 6    | 426       | 280.59        | 998.0             |              |
| 7    | 489       | 98.45         | 305.0             |              |
| 8    | 528       | 37.24         | 106.8             |              |
| 9    | 591       | 70.57         | 180.8             |              |
| 10   | 633       | 20.07         | 48.0              |              |
| 11   | 681       | 44.14         | 98.2              |              |
| 12   | 845       | 24.34         | 43.7              |              |
| 13   | 951       | 31.04         | 49.5              |              |
| 14   | 1,021     | 28.80         | 42.7              |              |
| 15   | 1,305     | 14.75         | 17.1              |              |
| 16   | 1,487     | 16.65         | 17.0              |              |
| 17   | 1,778     | 10.09         | 8.6               |              |
| 18   | 1,967     | 5.95          | 4.6               |              |
| 19   | 2,427     | 6.55          | 4.1               |              |
| 20   | 2,874     | 17.54         | 9.2               |              |
| 21   | 4,660     | 28.95         | 9.4               |              |
| 22   | 5,382     | 25.74         | 7.2               |              |
| 23   | 6,608     | 20.10         | 4.6               |              |
| 24   | 8,581     | 3.45          | 0.6               |              |
| 25   | 10,380    | 75.00         | 10.9              | Upper Marker |
| 26   | 13,394    | 0.00          | 0.0               |              |

Assay Class: High Sensitivity DNA Assay  
 Data Path: C:\...ents and Settings\Bioanalyzer\2012-08-27\2012-08-27\_004.xad


Created: 8/27/2012 1:30:45 PM  
 Modified: 8/27/2012 2:21:36 PM

### Electropherogram Summary Continued ...

#### ... Peak table for sample 6 : Kit-1-BF-1

| Peak | Size [bp] | Conc. [pg/μl] | Molarity [pmol/l] | Observations |
|------|-----------|---------------|-------------------|--------------|
| 27   | 16,228    | 0.00          | 0.0               |              |
| 28   | 17,532    | 0.00          | 0.0               |              |
| 29   | 18,072    | 0.00          | 0.0               |              |
| 30   | 18,702    | 0.00          | 0.0               |              |
| 31   | 21,311    | 0.00          | 0.0               |              |
| 32   | 22,030    | 0.00          | 0.0               |              |
| 33   | 23,830    | 0.00          | 0.0               |              |

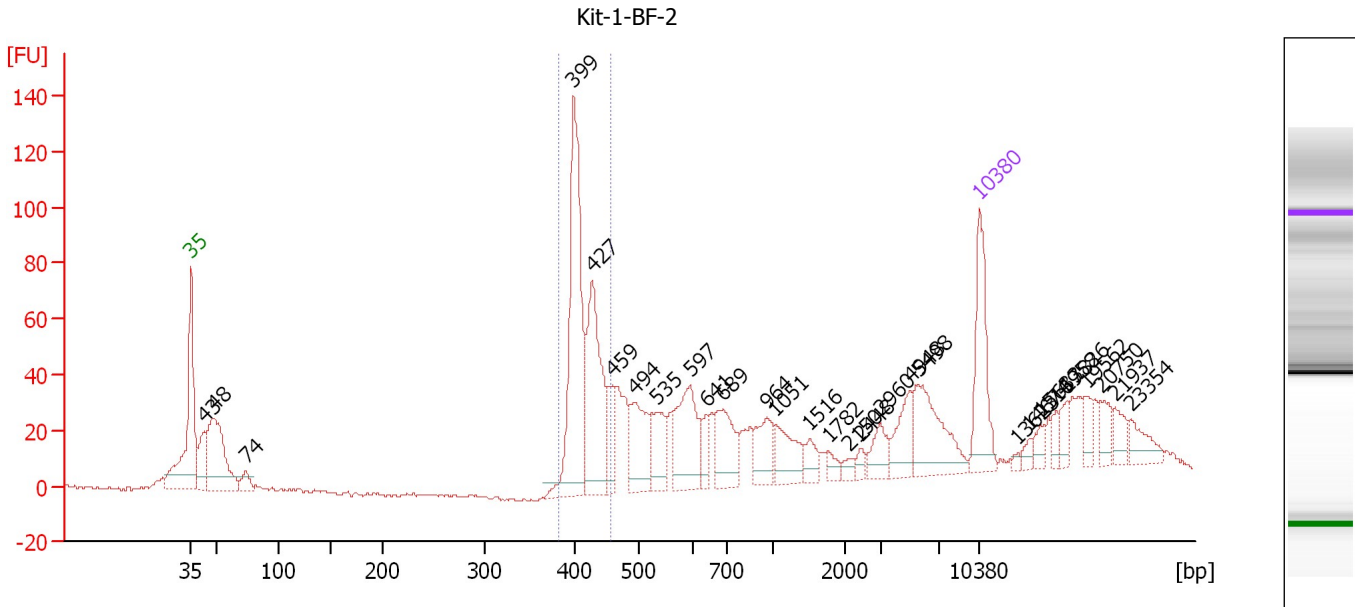
#### Region table for sample 6 : Kit-1-BF-1

| From [bp] | To [bp] | Average Size [bp] | Molarity [pmol/l] | Conc. [pg/μl] | Corr. Area | % of Total | Size distribution in CV [%] | Color   |
|-----------|---------|-------------------|-------------------|---------------|------------|------------|-----------------------------|---|
| 376       | 454     | 418               | 1,232.1           | 339.06        | 312.6      | 25         | 4.3                         |  |

Assay Class: High Sensitivity DNA Assay  
 Data Path: C:\...ents and Settings\Bioanalyzer\2012-08-27\2012-08-27\_004.xad

Created: 8/27/2012 1:30:45 PM  
 Modified: 8/27/2012 2:21:36 PM

**Electropherogram Summary Continued ...**



**Overall Results for sample 7 : Kit-1-BF-2**

Number of peaks found: 29      Corr. Area 1: 337.7  
 Noise: 0.6

**Peak table for sample 7 : Kit-1-BF-2**

| Peak | Size [bp] | Conc. [pg/μl] | Molarity [pmol/l] | Observations |
|------|-----------|---------------|-------------------|--------------|
| 1    | 35        | 125.00        | 5,411.3           | Lower Marker |
| 2    | 43        | 57.42         | 2,045.6           |              |
| 3    | 48        | 175.75        | 5,527.7           |              |
| 4    | 74        | 21.51         | 442.6             |              |
| 5    | 399       | 259.75        | 987.0             |              |
| 6    | 427       | 165.90        | 588.2             |              |
| 7    | 459       | 34.47         | 113.8             |              |
| 8    | 494       | 76.75         | 235.4             |              |
| 9    | 535       | 54.53         | 154.5             |              |
| 10   | 597       | 94.21         | 239.2             |              |
| 11   | 641       | 22.19         | 52.5              |              |
| 12   | 689       | 65.92         | 145.0             |              |
| 13   | 964       | 41.49         | 65.2              |              |
| 14   | 1,051     | 44.84         | 64.6              |              |
| 15   | 1,516     | 18.34         | 18.3              |              |
| 16   | 1,782     | 9.83          | 8.4               |              |
| 17   | 2,150     | 7.12          | 5.0               |              |
| 18   | 2,448     | 7.39          | 4.6               |              |
| 19   | 2,960     | 25.18         | 12.9              |              |
| 20   | 4,948     | 36.84         | 11.3              |              |
| 21   | 5,498     | 79.52         | 21.9              |              |
| 22   | 10,380    | 75.00         | 10.9              | Upper Marker |
| 23   | 13,623    | 0.00          | 0.0               |              |
| 24   | 14,674    | 0.00          | 0.0               |              |
| 25   | 15,633    | 0.00          | 0.0               |              |
| 26   | 16,958    | 0.00          | 0.0               |              |


Assay Class: High Sensitivity DNA Assay  
Data Path: C:\...ents and Settings\Bioanalyzer\2012-08-27\2012-08-27\_004.xad

Created: 8/27/2012 1:30:45 PM  
Modified: 8/27/2012 2:21:36 PM

**Electropherogram Summary Continued ...****... Peak table for sample 7 : Kit-1-BF-2**

| Peak | Size [bp] | Conc. [pg/μl] | Molarity [pmol/l] | Observations |
|------|-----------|---------------|-------------------|--------------|
| 27   | 17,826    | 0.00          | 0.0               |              |
| 28   | 19,562    | 0.00          | 0.0               |              |
| 29   | 20,750    | 0.00          | 0.0               |              |
| 30   | 21,937    | 0.00          | 0.0               |              |
| 31   | 23,354    | 0.00          | 0.0               |              |

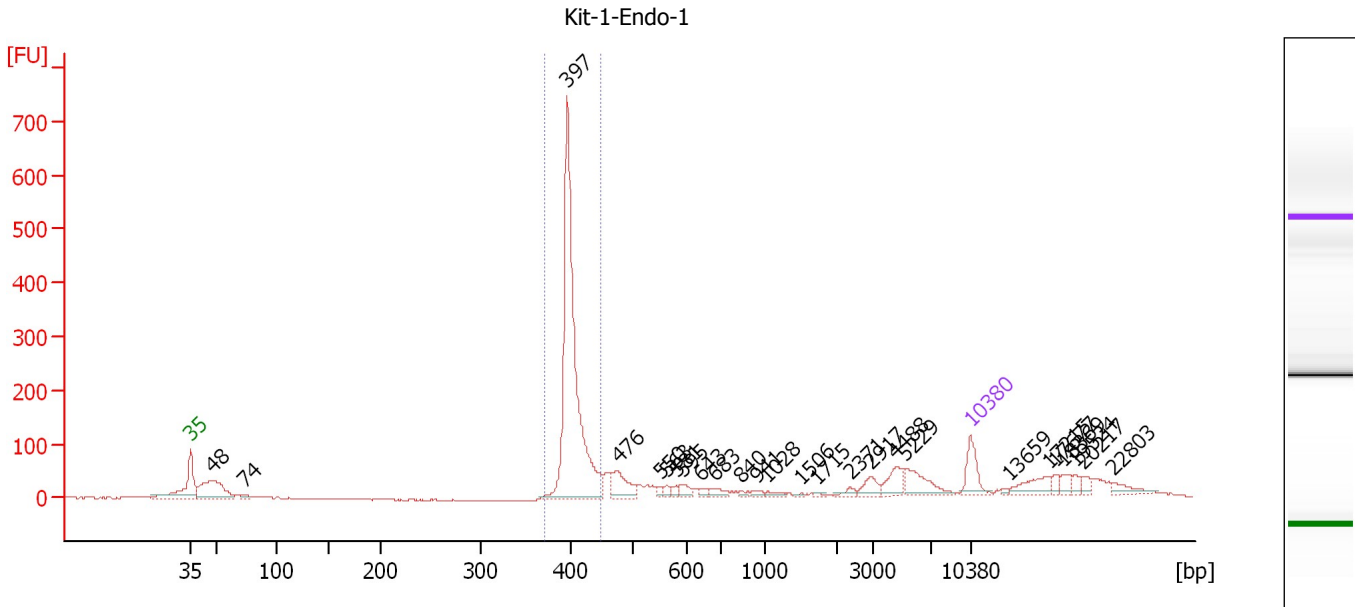
**Region table for sample 7 : Kit-1-BF-2**

| From [bp] | To [bp] | Average Size [bp] | Molarity [pmol/l] | Conc. [pg/μl] | Corr. Area | % of Total | Size distribution in CV [%] | Color   |
|-----------|---------|-------------------|-------------------|---------------|------------|------------|-----------------------------|---|
| 382       | 457     | 416               | 1,421.0           | 389.20        | 337.7      | 27         | 4.3                         |  |

Assay Class: High Sensitivity DNA Assay  
 Data Path: C:\...ents and Settings\Bioanalyzer\2012-08-27\2012-08-27\_004.xad

Created: 8/27/2012 1:30:45 PM  
 Modified: 8/27/2012 2:21:36 PM

**Electropherogram Summary Continued ...**



**Overall Results for sample 8 : Kit-1-Endo-1**

Number of peaks found: 26                      Corr. Area 1: 1,073.9  
 Noise: 0.7

**Peak table for sample 8 : Kit-1-Endo-1**

| Peak | Size [bp] | Conc. [pg/μl] | Molarity [pmol/l] | Observations |
|------|-----------|---------------|-------------------|--------------|
| 1    | 35        | 125.00        | 5,411.3           | Lower Marker |
| 2    | 48        | 279.77        | 8,889.8           |              |
| 3    | 74        | 21.09         | 431.2             |              |
| 4    | 397       | 1,155.20      | 4,411.0           |              |
| 5    | 476       | 115.10        | 366.7             |              |
| 6    | 550       | 15.62         | 43.0              |              |
| 7    | 563       | 15.38         | 41.4              |              |
| 8    | 581       | 16.98         | 44.3              |              |
| 9    | 595       | 30.25         | 77.1              |              |
| 10   | 643       | 13.34         | 31.5              |              |
| 11   | 683       | 28.21         | 62.6              |              |
| 12   | 840       | 8.15          | 14.7              |              |
| 13   | 941       | 12.47         | 20.1              |              |
| 14   | 1,028     | 12.15         | 17.9              |              |
| 15   | 1,506     | 3.98          | 4.0               |              |
| 16   | 1,715     | 4.79          | 4.2               |              |
| 17   | 2,371     | 13.69         | 8.7               |              |
| 18   | 2,917     | 38.33         | 19.9              |              |
| 19   | 4,488     | 57.36         | 19.4              |              |
| 20   | 5,229     | 84.38         | 24.4              |              |
| 21   | 10,380    | 75.00         | 10.9              | Upper Marker |
| 22   | 13,659    | 0.00          | 0.0               |              |
| 23   | 17,215    | 0.00          | 0.0               |              |
| 24   | 17,677    | 0.00          | 0.0               |              |
| 25   | 18,369    | 0.00          | 0.0               |              |
| 26   | 19,524    | 0.00          | 0.0               |              |


Assay Class: High Sensitivity DNA Assay  
Data Path: C:\...ents and Settings\Bioanalyzer\2012-08-27\2012-08-27\_004.xad

Created: 8/27/2012 1:30:45 PM  
Modified: 8/27/2012 2:21:36 PM

**Electropherogram Summary Continued ...****... Peak table for sample 8 : Kit-1-Endo-1**

| Peak | Size [bp] | Conc. [pg/μl] | Molarity [pmol/l] | Observations |
|------|-----------|---------------|-------------------|--------------|
| 27   | 20,217    | 0.00          | 0.0               |              |
| 28   | 22,803    | 0.00          | 0.0               |              |

**Region table for sample 8 : Kit-1-Endo-1**

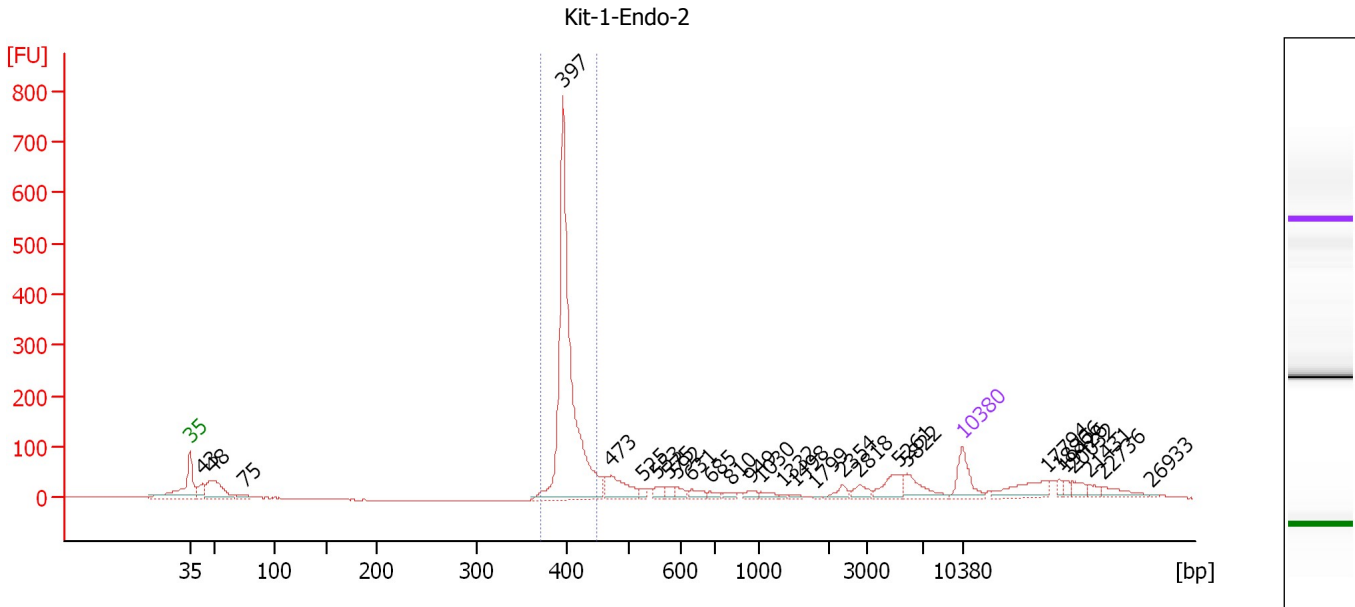
| From [bp] | To [bp] | Average Size [bp] | Molarity [pmol/l] | Conc. [pg/μl] | Corr. Area | % of Total | Size distribution in CV [%] | Color   |
|-----------|---------|-------------------|-------------------|---------------|------------|------------|-----------------------------|---|
| 372       | 450     | 405               | 4,162.0           | 1,110.71      | 1,073.9    | 48         | 3.2                         |  |



Assay Class: High Sensitivity DNA Assay  
 Data Path: C:\...ents and Settings\Bioanalyzer\2012-08-27\2012-08-27\_004.xad

Created: 8/27/2012 1:30:45 PM  
 Modified: 8/27/2012 2:21:36 PM

**Electropherogram Summary Continued ...**



**Overall Results for sample 9 : Kit-1-Endo-2**

Number of peaks found: 28                      Corr. Area 1: 1,168.5  
 Noise: 0.6

**Peak table for sample 9 : Kit-1-Endo-2**

| Peak | Size [bp] | Conc. [pg/μl] | Molarity [pmol/l] | Observations |
|------|-----------|---------------|-------------------|--------------|
| 1    | 35        | 125.00        | 5,411.3           | Lower Marker |
| 2    | 43        | 69.34         | 2,461.3           |              |
| 3    | 48        | 191.47        | 6,028.1           |              |
| 4    | 75        | 24.59         | 496.8             |              |
| 5    | 397       | 1,168.13      | 4,462.0           |              |
| 6    | 473       | 121.40        | 389.1             |              |
| 7    | 525       | 16.67         | 48.1              |              |
| 8    | 553       | 26.79         | 73.4              |              |
| 9    | 575       | 23.99         | 63.2              |              |
| 10   | 592       | 20.97         | 53.7              |              |
| 11   | 631       | 27.05         | 65.0              |              |
| 12   | 685       | 16.23         | 35.9              |              |
| 13   | 810       | 12.83         | 24.0              |              |
| 14   | 949       | 19.68         | 31.4              |              |
| 15   | 1,030     | 16.76         | 24.6              |              |
| 16   | 1,332     | 4.80          | 5.5               |              |
| 17   | 1,498     | 7.29          | 7.4               |              |
| 18   | 1,799     | 2.62          | 2.2               |              |
| 19   | 2,354     | 23.40         | 15.1              |              |
| 20   | 2,818     | 26.77         | 14.4              |              |
| 21   | 5,261     | 62.23         | 17.9              |              |
| 22   | 5,822     | 65.53         | 17.1              |              |
| 23   | 10,380    | 75.00         | 10.9              | Upper Marker |
| 24   | 17,794    | 0.00          | 0.0               |              |
| 25   | 18,866    | 0.00          | 0.0               |              |
| 26   | 19,426    | 0.00          | 0.0               |              |


Assay Class: High Sensitivity DNA Assay  
Data Path: C:\...ents and Settings\Bioanalyzer\2012-08-27\2012-08-27\_004.xad

Created: 8/27/2012 1:30:45 PM  
Modified: 8/27/2012 2:21:36 PM

**Electropherogram Summary Continued ...****... Peak table for sample 9 : Kit-1-Endo-2**

| Peak | Size [bp] | Conc. [pg/ $\mu$ l] | Molarity [pmol/l] | Observations |
|------|-----------|---------------------|-------------------|--------------|
| 27   | 20,032    | 0.00                | 0.0               |              |
| 28   | 21,431    | 0.00                | 0.0               |              |
| 29   | 22,736    | 0.00                | 0.0               |              |
| 30   | 26,933    | 0.00                | 0.0               |              |

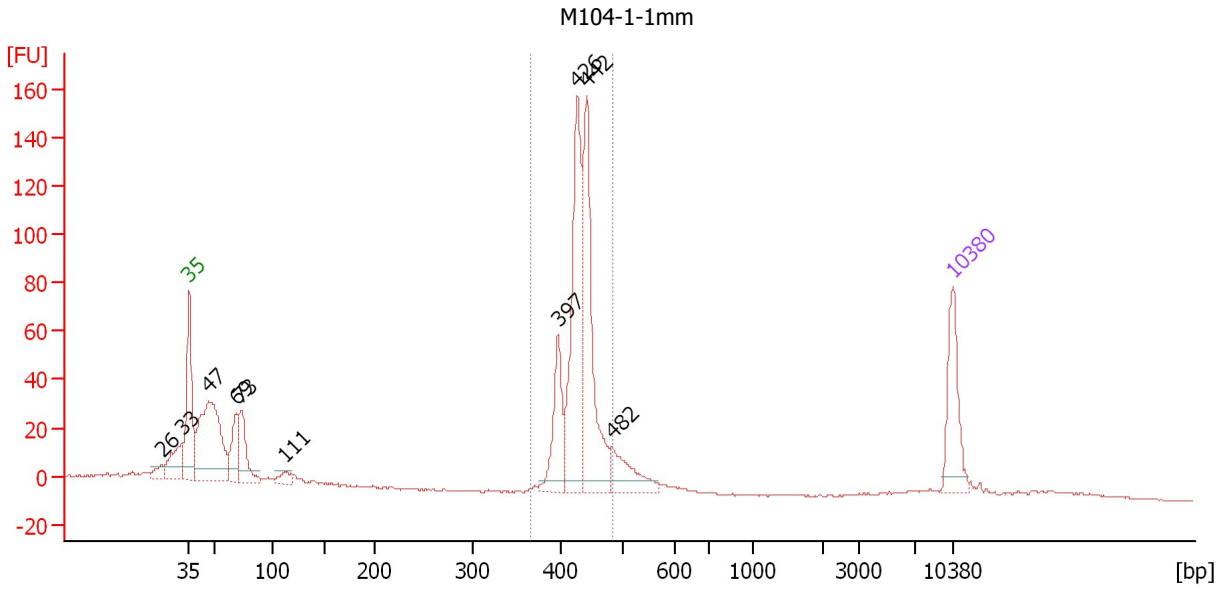
**Region table for sample 9 : Kit-1-Endo-2**

| From [bp] | To [bp] | Average Size [bp] | Molarity [pmol/l] | Conc. [pg/ $\mu$ l] | Corr. Area | % of Total | Size distribution in CV [%] | Color   |
|-----------|---------|-------------------|-------------------|---------------------|------------|------------|-----------------------------|---|
| 372       | 451     | 405               | 4,124.7           | 1,099.91            | 1,168.5    | 51         | 3.5                         |  |

Assay Class: High Sensitivity DNA Assay  
 Data Path: C:\...ents and Settings\Bioanalyzer\2012-08-27\2012-08-27\_004.xad

Created: 8/27/2012 1:30:45 PM  
 Modified: 8/27/2012 2:21:36 PM

**Electropherogram Summary Continued ...**



**Overall Results for sample 10 : M104-1-1mm**

Number of peaks found: 10      Corr. Area 1: 493.1  
 Noise: 0.3

**Peak table for sample 10 : M104-1-1mm**

| Peak | Size [bp] | Conc. [pg/μl] | Molarity [pmol/l] | Observations |
|------|-----------|---------------|-------------------|--------------|
| 1    | 26        | 0.00          | 0.0               |              |
| 2    | 33        | 0.00          | 0.0               |              |
| 3    | 35        | 125.00        | 5,411.3           | Lower Marker |
| 4    | 47        | 308.37        | 9,947.5           |              |
| 5    | 69        | 71.93         | 1,585.5           |              |
| 6    | 73        | 88.23         | 1,825.3           |              |
| 7    | 111       | 21.50         | 292.6             |              |
| 8    | 397       | 100.40        | 383.4             |              |
| 9    | 426       | 266.79        | 948.0             |              |
| 10   | 442       | 255.18        | 874.9             |              |
| 11   | 482       | 67.90         | 213.3             |              |
| 12   | 10,380    | 75.00         | 10.9              | Upper Marker |

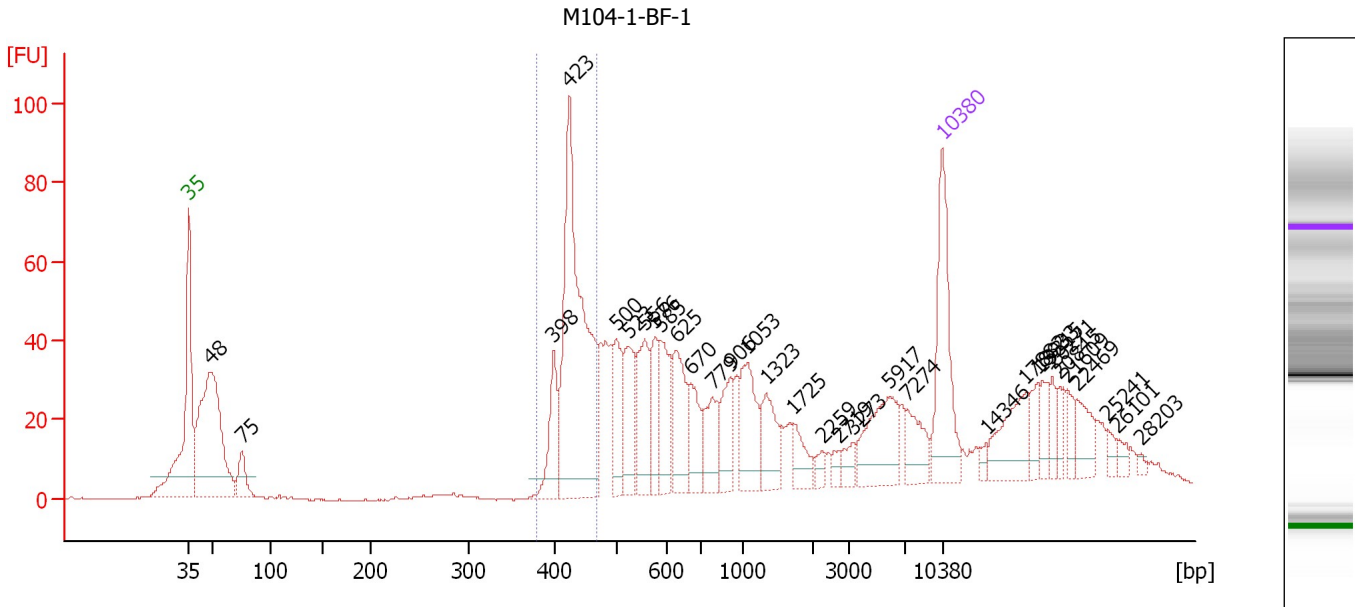
**Region table for sample 10 : M104-1-1mm**

| From [bp] | To [bp] | Average Size [bp] | Molarity [pmol/l] | Conc. [pg/μl] | Corr. Area | % of Total | Size distribution in CV [%] | Color |
|-----------|---------|-------------------|-------------------|---------------|------------|------------|-----------------------------|-------|
| 366       | 484     | 430               | 2,158.8           | 611.83        | 493.1      | 53         | 4.8                         | Blue  |

Assay Class: High Sensitivity DNA Assay  
 Data Path: C:\...ents and Settings\Bioanalyzer\2012-08-27\2012-08-27\_004.xad

Created: 8/27/2012 1:30:45 PM  
 Modified: 8/27/2012 2:21:36 PM

**Electropherogram Summary Continued ...**



**Overall Results for sample 11 : M104-1-BF-1**

Number of peaks found: 32                      Corr. Area 1: 276.1  
 Noise: 0.2

**Peak table for sample 11 : M104-1-BF-1**

| Peak | Size [bp] | Conc. [pg/μl] | Molarity [pmol/l] | Observations |
|------|-----------|---------------|-------------------|--------------|
| 1    | 35        | 125.00        | 5,411.3           | Lower Marker |
| 2    | 48        | 258.18        | 8,128.7           |              |
| 3    | 75        | 31.29         | 634.1             |              |
| 4    | 398       | 47.40         | 180.5             |              |
| 5    | 423       | 272.28        | 975.1             |              |
| 6    | 500       | 45.94         | 139.3             |              |
| 7    | 523       | 49.82         | 144.4             |              |
| 8    | 556       | 56.70         | 154.5             |              |
| 9    | 576       | 30.71         | 80.8              |              |
| 10   | 585       | 47.41         | 122.7             |              |
| 11   | 625       | 55.50         | 134.5             |              |
| 12   | 670       | 32.87         | 74.3              |              |
| 13   | 779       | 35.75         | 69.6              |              |
| 14   | 906       | 33.85         | 56.6              |              |
| 15   | 1,053     | 51.65         | 74.4              |              |
| 16   | 1,323     | 32.72         | 37.5              |              |
| 17   | 1,725     | 17.14         | 15.1              |              |
| 18   | 2,259     | 7.28          | 4.9               |              |
| 19   | 2,719     | 5.48          | 3.1               |              |
| 20   | 3,273     | 9.85          | 4.6               |              |
| 21   | 5,917     | 55.35         | 14.2              |              |
| 22   | 7,274     | 25.70         | 5.4               |              |
| 23   | 10,380    | 75.00         | 10.9              | Upper Marker |
| 24   | 14,346    | 0.00          | 0.0               |              |
| 25   | 17,882    | 0.00          | 0.0               |              |
| 26   | 18,933    | 0.00          | 0.0               |              |

Assay Class: High Sensitivity DNA Assay  
 Data Path: C:\...ents and Settings\Bioanalyzer\2012-08-27\2012-08-27\_004.xad


Created: 8/27/2012 1:30:45 PM  
 Modified: 8/27/2012 2:21:36 PM

### Electropherogram Summary Continued ...

#### ... Peak table for sample 11 : M104-1-BF-1

| Peak | Size [bp] | Conc. [pg/μl] | Molarity [pmol/l] | Observations |
|------|-----------|---------------|-------------------|--------------|
| 27   | 19,315    | 0.00          | 0.0               |              |
| 28   | 20,271    | 0.00          | 0.0               |              |
| 29   | 20,845    | 0.00          | 0.0               |              |
| 30   | 21,609    | 0.00          | 0.0               |              |
| 31   | 22,469    | 0.00          | 0.0               |              |
| 32   | 25,241    | 0.00          | 0.0               |              |
| 33   | 26,101    | 0.00          | 0.0               |              |
| 34   | 28,203    | 0.00          | 0.0               |              |

#### Region table for sample 11 : M104-1-BF-1

| From [bp] | To [bp] | Average Size [bp] | Molarity [pmol/l] | Conc. [pg/μl] | Corr. Area | % of Total | Size distribution in CV [%] | Color   |
|-----------|---------|-------------------|-------------------|---------------|------------|------------|-----------------------------|---|
| 379       | 469     | 430               | 1,040.4           | 294.72        | 276.1      | 19         | 4.7                         |  |

Assay Class: High Sensitivity DNA Assay  
Data Path: C:\...ents and Settings\Bioanalyzer\2012-08-27\2012-08-27\_004.xad

Created: 8/27/2012 1:30:45 PM  
Modified: 8/27/2012 2:21:36 PM

**Gel Image**

