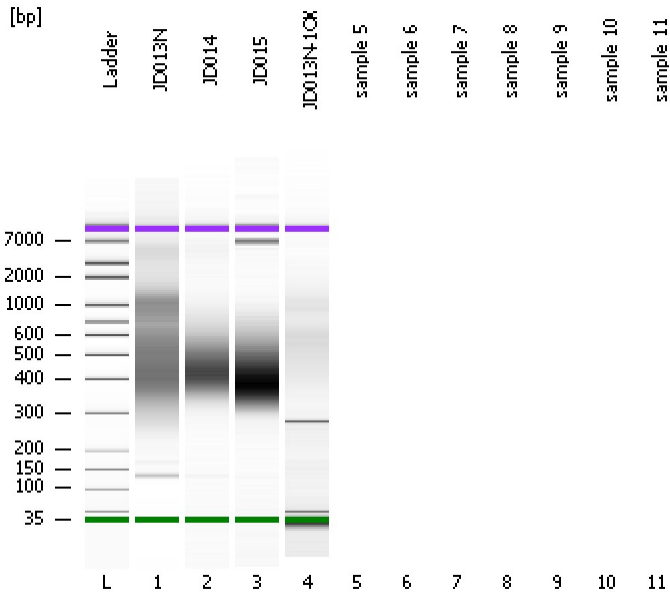


Assay Class: High Sensitivity DNA Assay
Data Path: C:\...ents and Settings\Bioanalyzer\2012-08-27\2012-08-27_005.xad

Created: 8/27/2012 3:30:57 PM
Modified: 8/27/2012 3:54:03 PM

Electrophoresis File Run Summary



Instrument Information:

Instrument Name: DE13701086 Firmware: C.01.069
Serial#: DE13701086 Type: G2938B

Assay Information:

Assay Origin Path: C:\Program Files\Agilent\2100 bioanalyzer\2100 expert\assays\dsDNA\High Sensitivity DNA.xsy
Assay Class: High Sensitivity DNA Assay
Version: 1.03
Assay Comments: Copyright © 2003-2010 Agilent Technologies

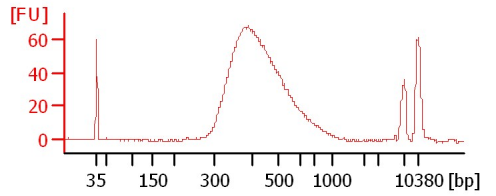
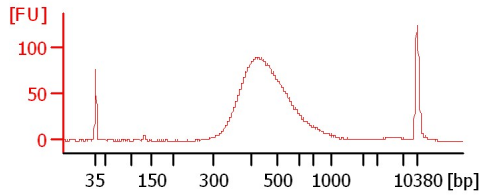
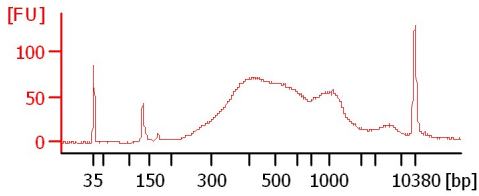
Chip Information:

Chip Lot #: Reagent Kit Lot #: Chip Comments:

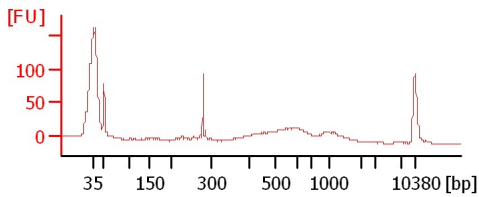
JD013N

JD014

JD015



JD013N-10X



Assay Class: High Sensitivity DNA Assay
Data Path: C:\...ents and Settings\Bioanalyzer\2012-08-27\2012-08-27_005.xad

Created: 8/27/2012 3:30:57 PM
Modified: 8/27/2012 3:54:03 PM

Electrophoresis File Run Summary (Chip Summary)

Sample Name	Sample Comment	Rest. Digest	Status	Observation	Result Label	Result Color
JD013N		<input type="checkbox"/>	✓			
JD014		<input type="checkbox"/>	✓			
JD015		<input type="checkbox"/>	✓			
JD013N-10X		<input type="checkbox"/>	✓			
sample 5		<input type="checkbox"/>				
sample 6		<input type="checkbox"/>				
sample 7		<input type="checkbox"/>				
sample 8		<input type="checkbox"/>				
sample 9		<input type="checkbox"/>				
sample 10		<input type="checkbox"/>				
sample 11		<input type="checkbox"/>				
Ladder		<input type="checkbox"/>	✓			

Chip Lot #

Reagent Kit Lot #

Chip Comments :

Assay Class: High Sensitivity DNA Assay
Data Path: C:\...ents and Settings\Bioanalyzer\2012-08-27\2012-08-27_005.xad

Created: 8/27/2012 3:30:57 PM
Modified: 8/27/2012 3:54:03 PM

Electrophoresis Assay Details

General Analysis Settings

Number of Available Sample and Ladder Wells (Max.) : 12
Minimum Visible Range [s] : 32
Maximum Visible Range [s] : 138
Start Analysis Time Range [s] : 33
End Analysis Time Range [s] : 137.5
Ladder Concentration [pg/μl] : 1950
Uses Standard Area for Ladder Fragments
Lower Marker Concentration [pg/μl] : 125
Upper Marker Concentration [pg/μl] : 75
Used Upper Marker for Quantitation
Standard Curve Fit is Point to Point
Show Data Aligned to Lower and Upper Marker

Integrator Settings

Integration Start Time [s] : 33.05
Integration End Time [s] : 137
Slope Threshold : 0.8
Height Threshold [FU] : 5
Area Threshold : 0.1
Width Threshold [s] : 0.6
Baseline Plateau [s] : 0.5

Filter Settings

Filter Width [s] : 0.5
Polynomial Order : 4

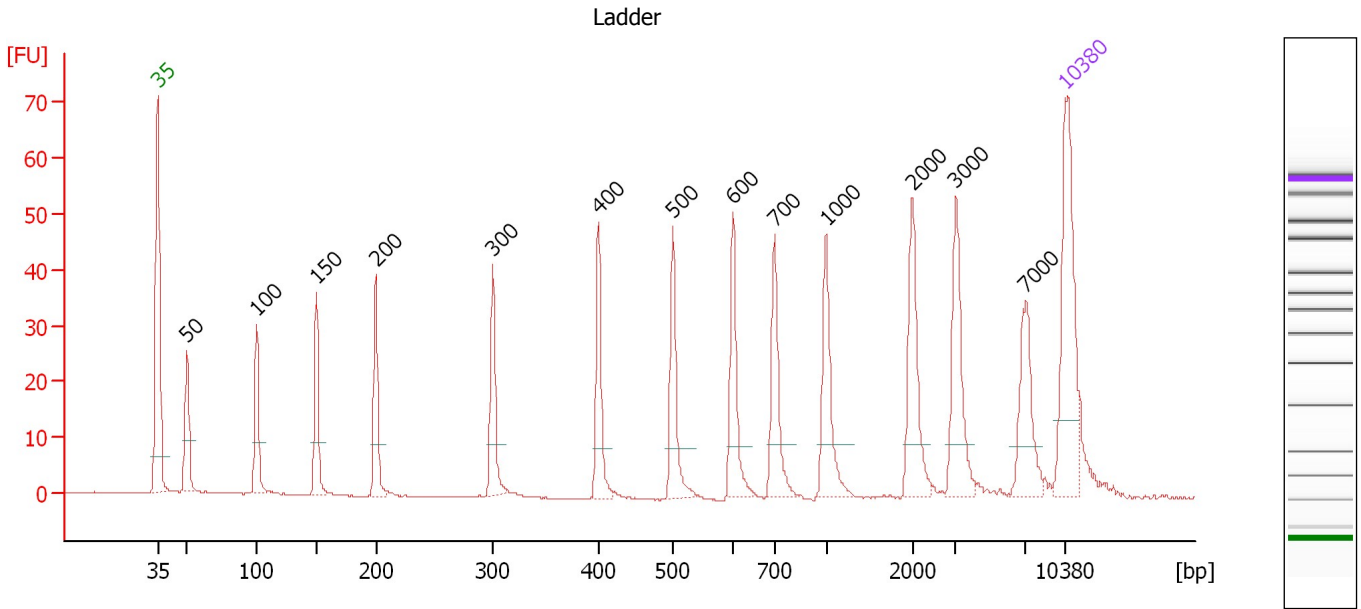
Ladder

Ladder Peak	Size	Area
1	35	160
2	50	210
3	100	208
4	150	221
5	200	242
6	300	270
7	400	305
8	500	306
9	600	336
10	700	321
11	1000	366
12	2000	413
13	3000	411
14	7000	400
15	10380	214

Assay Class: High Sensitivity DNA Assay
 Data Path: C:\...ents and Settings\Bioanalyzer\2012-08-27\2012-08-27_005.xad

Created: 8/27/2012 3:30:57 PM
 Modified: 8/27/2012 3:54:03 PM

Electropherogram Summary



Overall Results for Ladder

Noise: 0.1

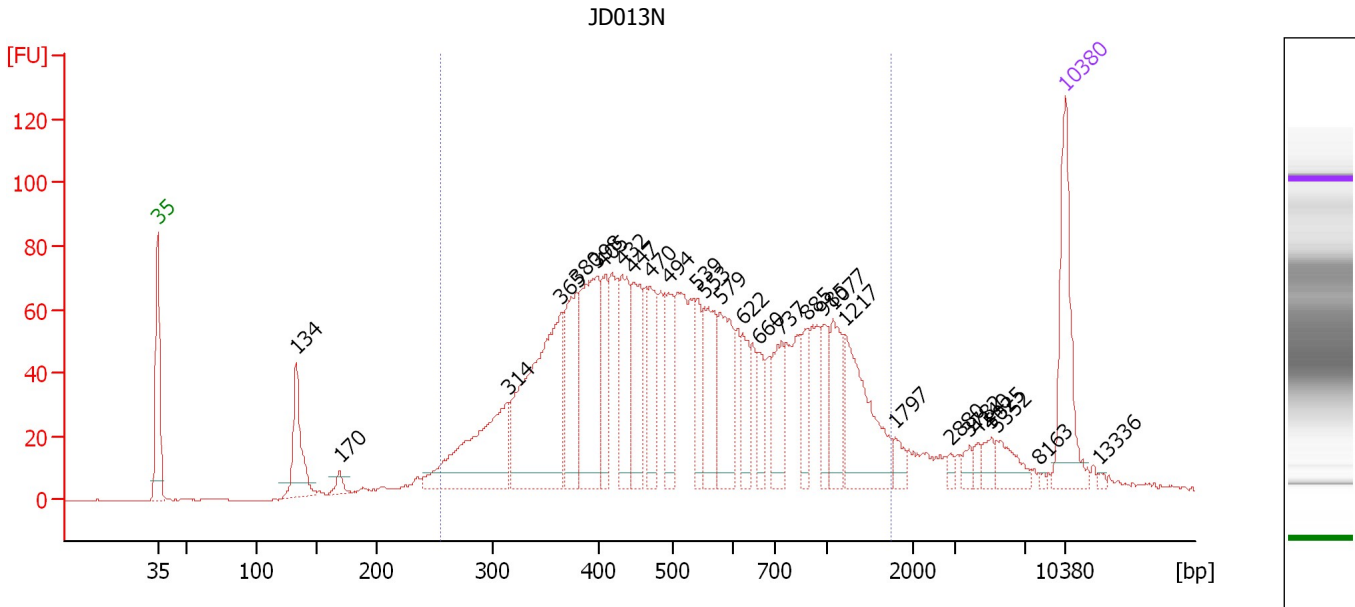
Peak table for Ladder

Peak	Size [bp]	Conc. [pg/μl]	Molarity [pmol/l]	Observations
1	35	125.00	5,411.3	Lower Marker
2	50	150.00	4,545.5	Ladder Peak
3	100	150.00	2,272.7	Ladder Peak
4	150	150.00	1,515.2	Ladder Peak
5	200	150.00	1,136.4	Ladder Peak
6	300	150.00	757.6	Ladder Peak
7	400	150.00	568.2	Ladder Peak
8	500	150.00	454.5	Ladder Peak
9	600	150.00	378.8	Ladder Peak
10	700	150.00	324.7	Ladder Peak
11	1,000	150.00	227.3	Ladder Peak
12	2,000	150.00	113.6	Ladder Peak
13	3,000	150.00	75.8	Ladder Peak
14	7,000	150.00	32.5	Ladder Peak
15	10,380	75.00	10.9	Upper Marker

Assay Class: High Sensitivity DNA Assay
 Data Path: C:\...ents and Settings\Bioanalyzer\2012-08-27\2012-08-27_005.xad

Created: 8/27/2012 3:30:57 PM
 Modified: 8/27/2012 3:54:03 PM

Electropherogram Summary Continued ...



Overall Results for sample 1 : JD013N

Number of peaks found: 29 Corr. Area 1: 2,081.0
 Noise: 0.2

Peak table for sample 1 : JD013N

Peak	Size [bp]	Conc. [pg/μl]	Molarity [pmol/l]	Observations
1	35	125.00	5,411.3	Lower Marker
2	134	81.35	923.2	
3	170	10.21	91.2	
4	314	156.26	753.3	
5	365	238.69	991.2	
6	380	93.80	374.4	
7	398	143.10	544.7	
8	405	53.57	200.4	
9	432	70.65	247.8	
10	447	74.98	254.3	
11	470	58.20	187.7	
12	494	55.87	171.4	
13	539	38.27	107.5	
14	553	71.91	197.1	
15	579	73.26	191.8	
16	622	36.80	89.7	
17	660	27.25	62.5	
18	737	46.06	94.7	
19	885	31.06	53.2	
20	985	28.17	43.3	
21	1,077	42.89	60.3	
22	1,217	92.43	115.0	
23	1,797	11.41	9.6	
24	2,880	4.35	2.3	
25	3,782	7.86	3.1	
26	4,240	5.97	2.1	

Assay Class: High Sensitivity DNA Assay
 Data Path: C:\...ents and Settings\Bioanalyzer\2012-08-27\2012-08-27_005.xad


Created: 8/27/2012 3:30:57 PM
 Modified: 8/27/2012 3:54:03 PM

Electropherogram Summary Continued ...

... Peak table for sample 1 : JD013N

Peak	Size [bp]	Conc. [pg/μl]	Molarity [pmol/l]	Observations
27	5,025	11.45	3.5	
28	5,352	20.46	5.8	
29	8,163	1.94	0.4	
30	10,380	75.00	10.9	Upper Marker
31	13,336	0.00	0.0	

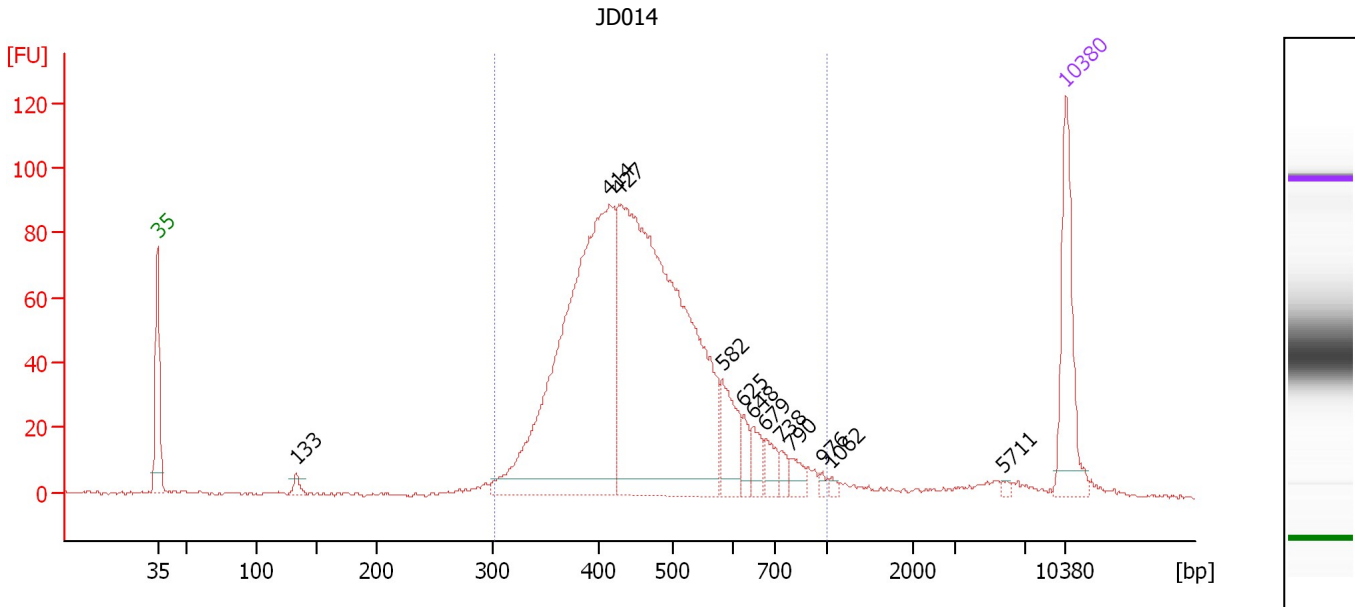
Region table for sample 1 : JD013N

From [bp]	To [bp]	Average Size [bp]	Molarity [pmol/l]	Conc. [pg/μl]	Corr. Area	% of Total	Size distribution in CV [%]	Color
256	1,754	601	6,307.6	1,950.97	2,081.0	88	51.0	

Assay Class: High Sensitivity DNA Assay
 Data Path: C:\...ents and Settings\Bioanalyzer\2012-08-27\2012-08-27_005.xad

Created: 8/27/2012 3:30:57 PM
 Modified: 8/27/2012 3:54:03 PM

Electropherogram Summary Continued ...



Overall Results for sample 2 : JD014

Number of peaks found: 12 Corr. Area 1: 1,405.9
 Noise: 0.5

Peak table for sample 2 : JD014

Peak	Size [bp]	Conc. [pg/μl]	Molarity [pmol/l]	Observations
1	35	125.00	5,411.3	Lower Marker
2	133	9.21	104.6	
3	414	542.30	1,984.1	
4	427	660.79	2,345.5	
5	582	52.01	135.4	
6	625	16.23	39.4	
7	648	19.20	44.9	
8	679	18.61	41.5	
9	738	9.67	19.9	
10	790	13.23	25.4	
11	976	3.67	5.7	
12	1,062	3.75	5.3	
13	5,711	2.37	0.6	
14	10,380	75.00	10.9	Upper Marker

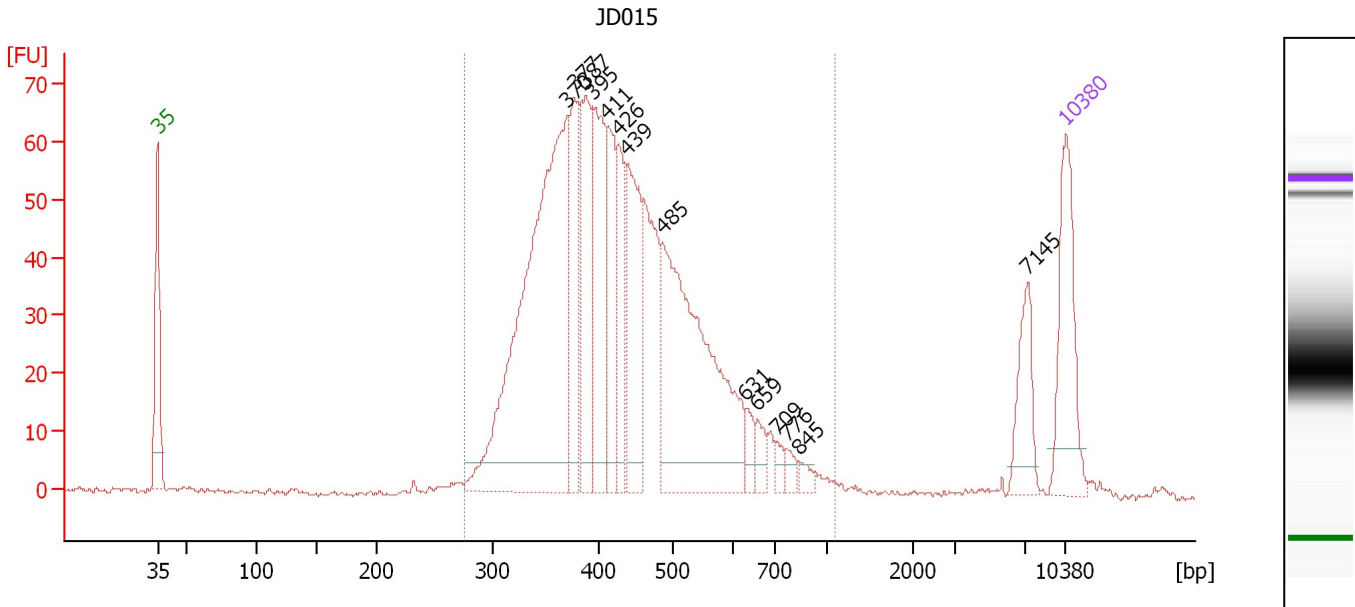
Region table for sample 2 : JD014

From [bp]	To [bp]	Average Size [bp]	Molarity [pmol/l]	Conc. [pg/μl]	Corr. Area	% of Total	Size distribution in CV [%]	Color
302	1,000	471	4,557.7	1,340.02	1,405.9	95	22.8	Blue

Assay Class: High Sensitivity DNA Assay
 Data Path: C:\...ents and Settings\Bioanalyzer\2012-08-27\2012-08-27_005.xad

Created: 8/27/2012 3:30:57 PM
 Modified: 8/27/2012 3:54:03 PM

Electropherogram Summary Continued ...



Overall Results for sample 3 : JD015

Number of peaks found: 14 Corr. Area 1: 1,175.7
 Noise: 0.4

Peak table for sample 3 : JD015

Peak	Size [bp]	Conc. [pg/μl]	Molarity [pmol/l]	Observations
1	35	125.00	5,411.3	Lower Marker
2	370	497.03	2,034.0	
3	377	85.23	342.5	
4	387	119.63	468.1	
5	395	130.59	501.4	
6	411	95.22	351.1	
7	426	69.27	246.3	
8	439	125.82	434.2	
9	485	312.97	977.7	
10	631	15.96	38.3	
11	659	14.94	34.3	
12	709	9.15	19.5	
13	776	8.84	17.3	
14	845	7.54	13.5	
15	7,145	43.67	9.3	
16	10,380	75.00	10.9	Upper Marker

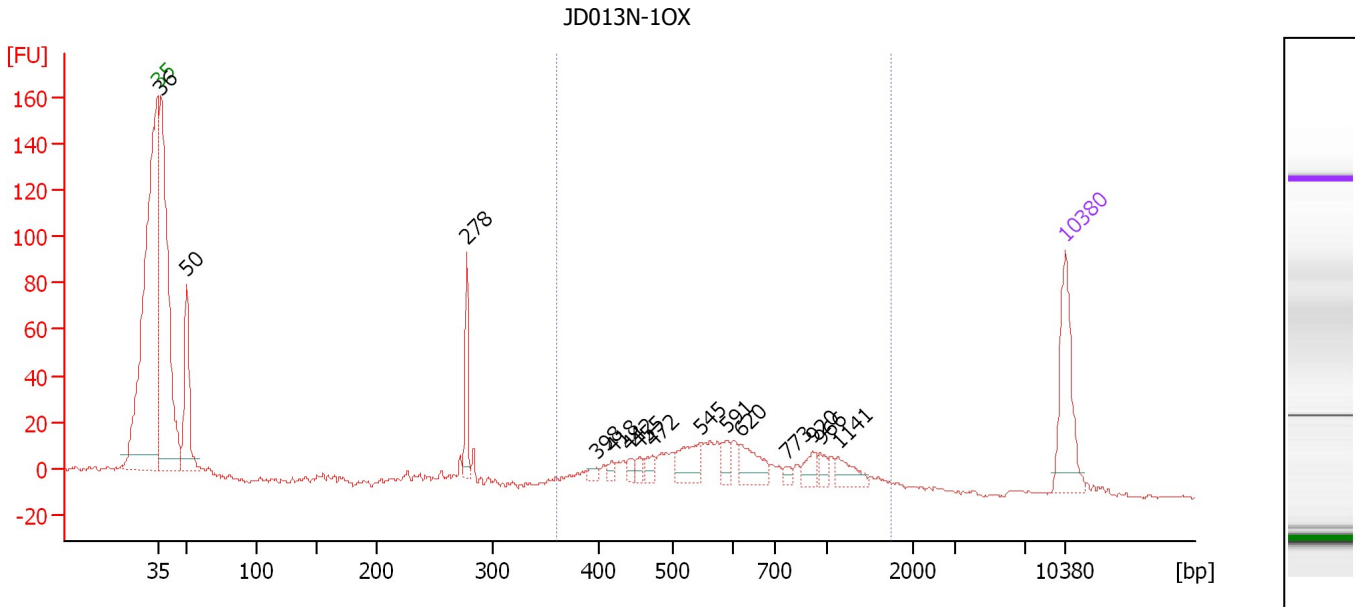
Region table for sample 3 : JD015

From [bp]	To [bp]	Average Size [bp]	Molarity [pmol/l]	Conc. [pg/μl]	Corr. Area	% of Total	Size distribution in CV [%]	Color
276	1,105	439	6,079.7	1,657.09	1,175.7	96	24.0	Blue

Assay Class: High Sensitivity DNA Assay
 Data Path: C:\...ents and Settings\Bioanalyzer\2012-08-27\2012-08-27_005.xad

Created: 8/27/2012 3:30:57 PM
 Modified: 8/27/2012 3:54:03 PM

Electropherogram Summary Continued ...



Overall Results for sample 4 : JD013N-10X

Number of peaks found: 15 Corr. Area 1: 325.8
 Noise: 0.7

Peak table for sample 4 : JD013N-10X

Peak	Size [bp]	Conc. [pg/μl]	Molarity [pmol/l]	Observations
1	35	125.00	5,411.3	Lower Marker
2	36	602.22	25,179.3	
3	50	139.15	4,228.9	
4	278	51.77	282.7	
5	398	7.74	29.5	
6	418	7.49	27.1	
7	442	8.15	28.0	
8	455	8.59	28.6	
9	472	11.88	38.1	
10	545	41.34	114.9	
11	591	17.01	43.6	
12	620	35.51	86.7	
13	773	6.61	13.0	
14	920	16.41	27.0	
15	966	9.97	15.7	
16	1,141	21.55	28.6	
17	10,380	75.00	10.9	Upper Marker

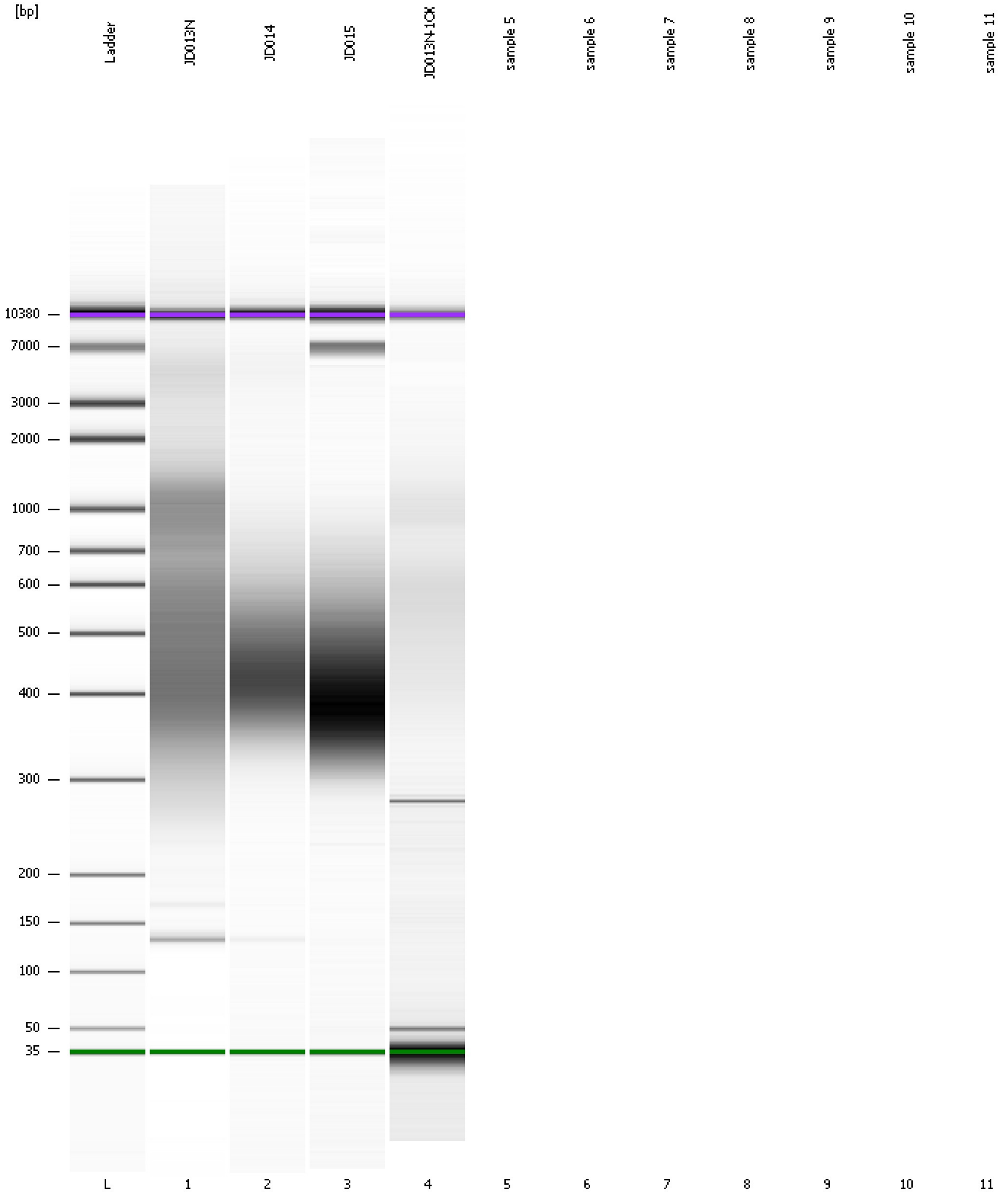
Region table for sample 4 : JD013N-10X

From [bp]	To [bp]	Average Size [bp]	Molarity [pmol/l]	Conc. [pg/μl]	Corr. Area	% of Total	Size distribution in CV [%]	Color
361	1,758	697	825.2	322.19	325.8	38	41.6	Blue

Assay Class: High Sensitivity DNA Assay
Data Path: C:\...ents and Settings\Bioanalyzer\2012-08-27\2012-08-27_005.xad

Created: 8/27/2012 3:30:57 PM
Modified: 8/27/2012 3:54:03 PM

Gel Image



Assay Class: High Sensitivity DNA Assay
Data Path: C:\...ents and Settings\Bioanalyzer\2012-08-27\2012-08-27_005.xad

Created: 8/27/2012 3:30:57 PM
Modified: 8/27/2012 3:54:03 PM

Invalid Samples

Sample 5 has not been run, no results available.

Sample 6 has not been run, no results available.

Sample 7 has not been run, no results available.

Sample 8 has not been run, no results available.

Sample 9 has not been run, no results available.

Sample 10 has not been run, no results available.

Sample 11 has not been run, no results available.