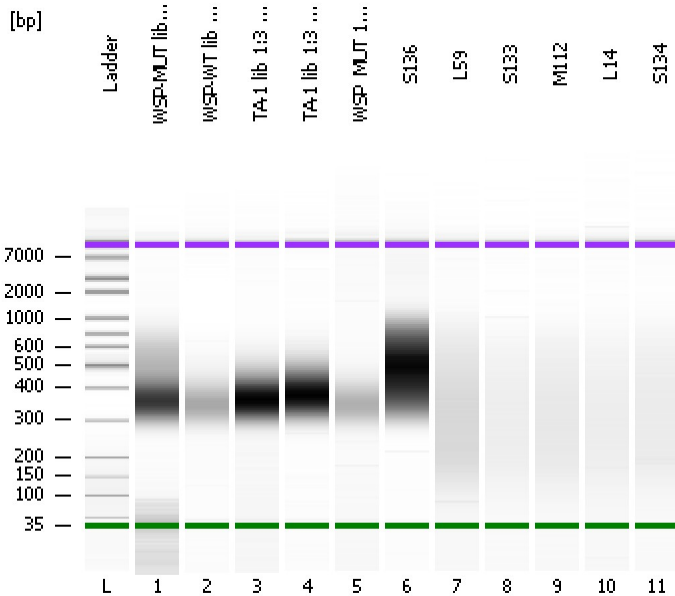


Assay Class: High Sensitivity DNA Assay
Data Path: C:\...ents and Settings\Bioanalyzer\2012-08-28\2012-08-28_002.xad

Created: 8/28/2012 10:18:13 AM
Modified: 8/28/2012 11:04:03 AM

Electrophoresis File Run Summary



Instrument Information:

Instrument Name: DE13701086 Firmware: C.01.069
Serial#: DE13701086 Type: G2938B

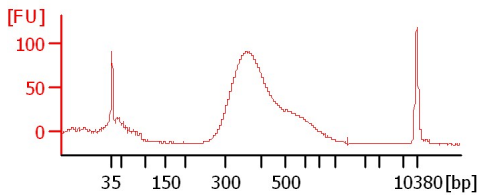
Assay Information:

Assay Origin Path: C:\Program Files\Agilent\2100 bioanalyzer\2100 expert\assays\dsDNA\High Sensitivity DNA.xsy
Assay Class: High Sensitivity DNA Assay
Version: 1.03
Assay Comments: Copyright © 2003-2010 Agilent Technologies

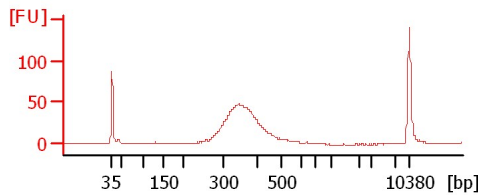
Chip Information:

Chip Lot #: Reagent Kit Lot #: Chip Comments:

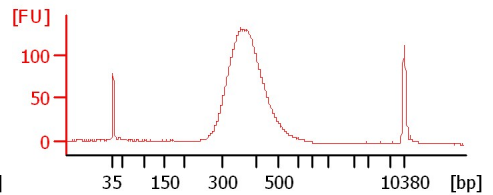
WSP-MUT lib 1:3 (8cyc)



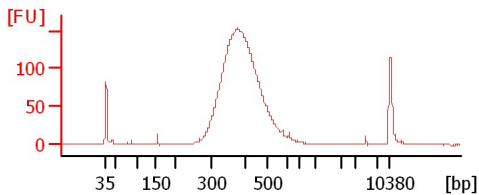
WSP-WT lib 1:2 (8cyc)



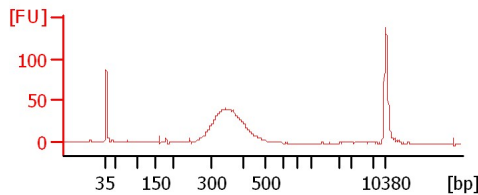
TA-1 lib 1:3 (old beads)



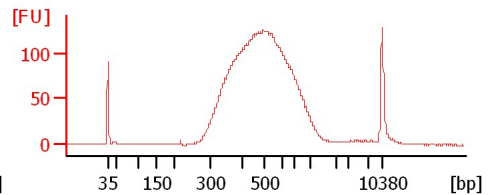
TA-1 lib 1:3 (new beads)



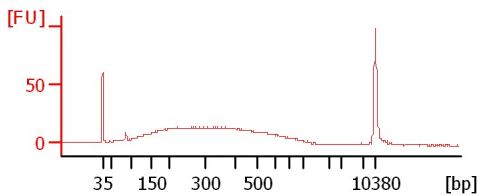
WSP_MUT 1:5 12-cyc lib



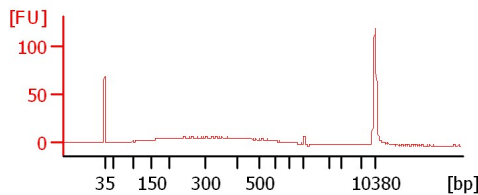
S136



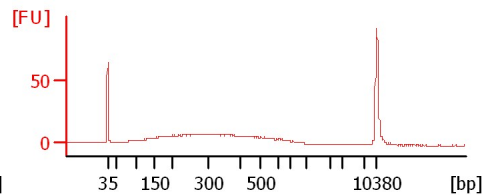
L59



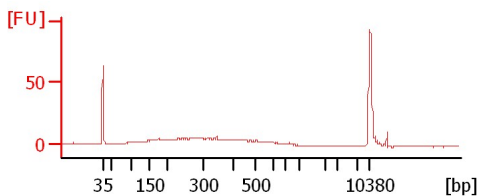
S133



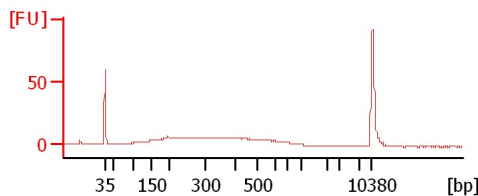
M112



L14



S134



Assay Class: High Sensitivity DNA Assay
 Data Path: C:\...ents and Settings\Bioanalyzer\2012-08-28\2012-08-28_002.xad

Created: 8/28/2012 10:18:13 AM
 Modified: 8/28/2012 11:04:03 AM

Electrophoresis File Run Summary (Chip Summary)

Sample Name	Sample Comment	Rest. Digest	Status	Observation	Result Label	Result Color
WSP-MUT lib 1:3 (8cyc)		<input type="checkbox"/>	✓			
WSP-WT lib 1:2 (8cyc)		<input type="checkbox"/>	✓			
TA-1 lib 1:3 (old beads)		<input type="checkbox"/>	✓			
TA-1 lib 1:3 (new beads)		<input type="checkbox"/>	✓			
WSP_MUT 1:5 12-cyc lib		<input type="checkbox"/>	✓			
S136		<input type="checkbox"/>	✓			
L59		<input type="checkbox"/>	✓			
S133		<input type="checkbox"/>	✓			
M112		<input type="checkbox"/>	✓			
L14		<input type="checkbox"/>	✓			
S134		<input type="checkbox"/>	✓			
Ladder		<input type="checkbox"/>	✓			

Chip Lot #

Reagent Kit Lot #

Chip Comments :

Assay Class: High Sensitivity DNA Assay
Data Path: C:\...ents and Settings\Bioanalyzer\2012-08-28\2012-08-28_002.xad

Created: 8/28/2012 10:18:13 AM
Modified: 8/28/2012 11:04:03 AM

Electrophoresis Assay Details

General Analysis Settings

Number of Available Sample and Ladder Wells (Max.) : 12
Minimum Visible Range [s] : 32
Maximum Visible Range [s] : 138
Start Analysis Time Range [s] : 33
End Analysis Time Range [s] : 137.5
Ladder Concentration [pg/μl] : 1950
Uses Standard Area for Ladder Fragments
Lower Marker Concentration [pg/μl] : 125
Upper Marker Concentration [pg/μl] : 75
Used Upper Marker for Quantitation
Standard Curve Fit is Point to Point
Show Data Aligned to Lower and Upper Marker

Integrator Settings

Integration Start Time [s] : 33.05
Integration End Time [s] : 137
Slope Threshold : 0.8
Height Threshold [FU] : 5
Area Threshold : 0.1
Width Threshold [s] : 0.6
Baseline Plateau [s] : 0.5

Filter Settings

Filter Width [s] : 0.5
Polynomial Order : 4

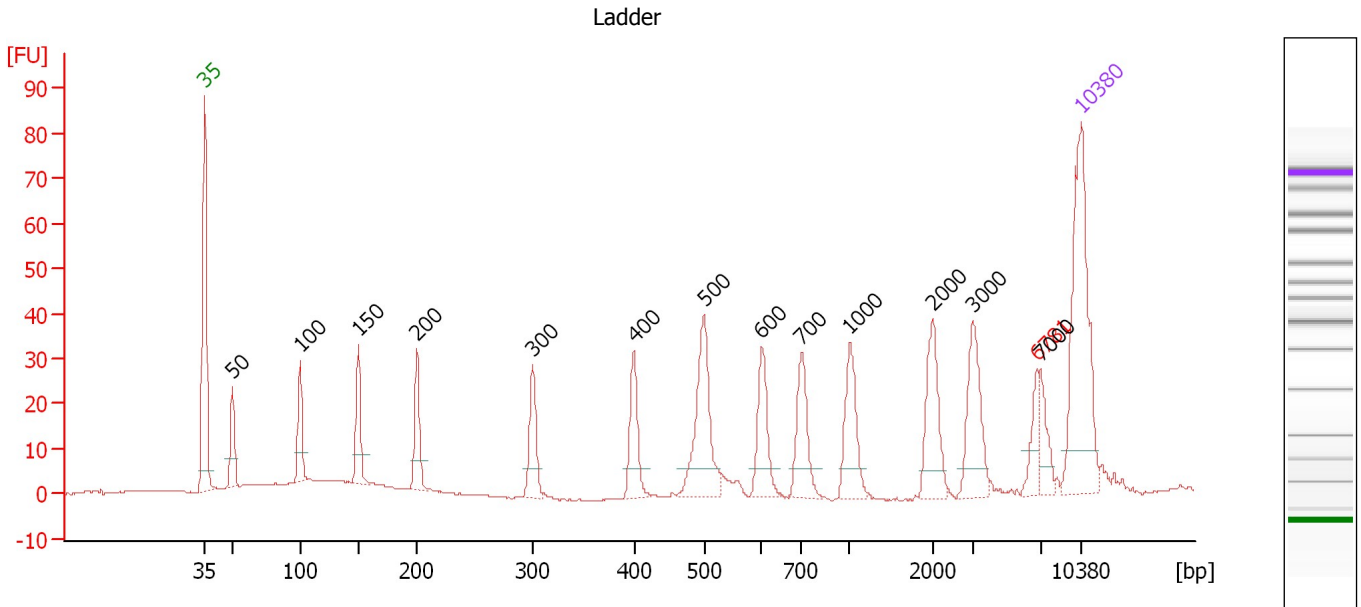
Ladder

Ladder Peak	Size	Area
1	35	160
2	50	210
3	100	208
4	150	221
5	200	242
6	300	270
7	400	305
8	500	306
9	600	336
10	700	321
11	1000	366
12	2000	413
13	3000	411
14	7000	400
15	10380	214

Assay Class: High Sensitivity DNA Assay
 Data Path: C:\...ents and Settings\Bioanalyzer\2012-08-28\2012-08-28_002.xad

Created: 8/28/2012 10:18:13 AM
 Modified: 8/28/2012 11:04:03 AM

Electropherogram Summary



Overall Results for Ladder

Noise: 0.2

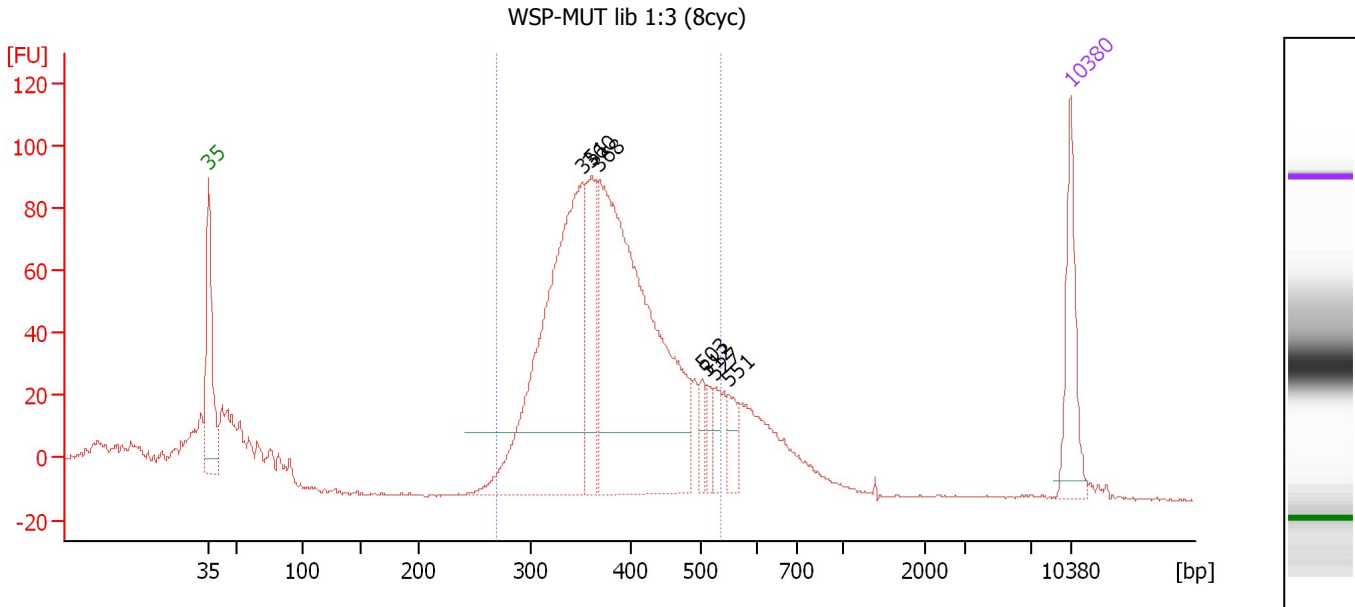
Peak table for Ladder

Peak	Size [bp]	Conc. [pg/μl]	Molarity [pmol/l]	Observations
1	35	125.00	5,411.3	Lower Marker
2	50	150.00	4,545.5	Ladder Peak
3	100	150.00	2,272.7	Ladder Peak
4	150	150.00	1,515.2	Ladder Peak
5	200	150.00	1,136.4	Ladder Peak
6	300	150.00	757.6	Ladder Peak
7	400	150.00	568.2	Ladder Peak
8	500	150.00	454.5	Ladder Peak
9	600	150.00	378.8	Ladder Peak
10	700	150.00	324.7	Ladder Peak
11	1,000	150.00	227.3	Ladder Peak
12	2,000	150.00	113.6	Ladder Peak
13	3,000	150.00	75.8	Ladder Peak
14	6,781	0.00	0.0	excluded peak
15	7,000	150.00	32.5	Ladder Peak
16	10,380	75.00	10.9	Upper Marker

Assay Class: High Sensitivity DNA Assay
 Data Path: C:\...ents and Settings\Bioanalyzer\2012-08-28\2012-08-28_002.xad

Created: 8/28/2012 10:18:13 AM
 Modified: 8/28/2012 11:04:03 AM

Electropherogram Summary Continued ...



Setpoint Deviations for sample 1 : WSP-MUT lib 1:3 (8cyc)

Height Threshold [FU] : 20

Overall Results for sample 1 : WSP-MUT lib 1:3 (8cyc)

Number of peaks found: 7 Corr. Area 1: 1,369.6
 Noise: 0.3

Peak table for sample 1 : WSP-MUT lib 1:3 (8cyc)

Peak	Size [bp]	Conc. [pg/μl]	Molarity [pmol/l]	Observations
1	35	125.00	5,411.3	Lower Marker
2	351	598.38	2,583.8	
3	360	150.41	633.1	
4	368	730.98	3,009.5	
5	503	25.15	75.7	
6	512	23.88	70.7	
7	527	26.04	74.9	
8	551	33.72	92.7	
9	10,380	75.00	10.9	Upper Marker

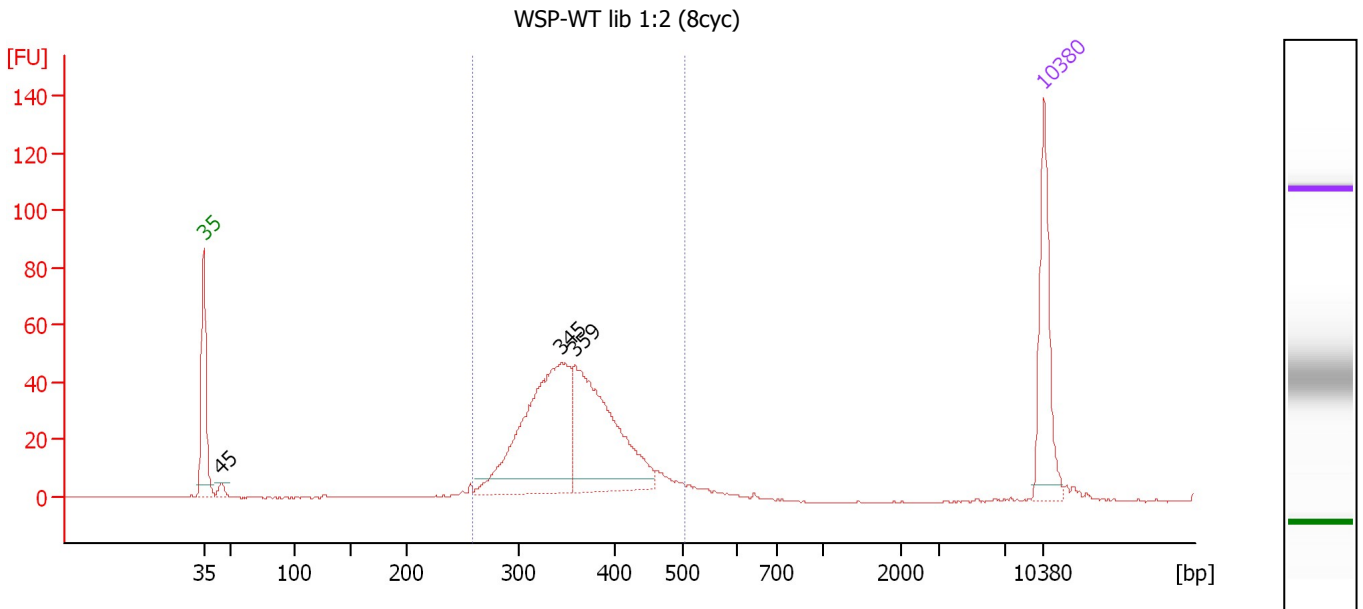
Region table for sample 1 : WSP-MUT lib 1:3 (8cyc)

From [bp]	To [bp]	Average Size [bp]	Molarity [pmol/l]	Conc. [pg/μl]	Corr. Area	% of Total	Size distribution in CV [%]	Color
269	538	384	5,829.4	1,437.93	1,369.6	77	15.3	Blue

Assay Class: High Sensitivity DNA Assay
 Data Path: C:\...ents and Settings\Bioanalyzer\2012-08-28\2012-08-28_002.xad

Created: 8/28/2012 10:18:13 AM
 Modified: 8/28/2012 11:04:03 AM

Electropherogram Summary Continued ...



Overall Results for sample 2 : WSP-WT lib 1:2 (8cyc)

Number of peaks found: 3 Corr. Area 1: 614.7
 Noise: 0.2

Peak table for sample 2 : WSP-WT lib 1:2 (8cyc)

Peak	Size [bp]	Conc. [pg/μl]	Molarity [pmol/l]	Observations
1	35	125.00	5,411.3	Lower Marker
2	45	10.04	338.7	
3	345	277.30	1,218.9	
4	359	226.75	957.0	
5	10,380	75.00	10.9	Upper Marker

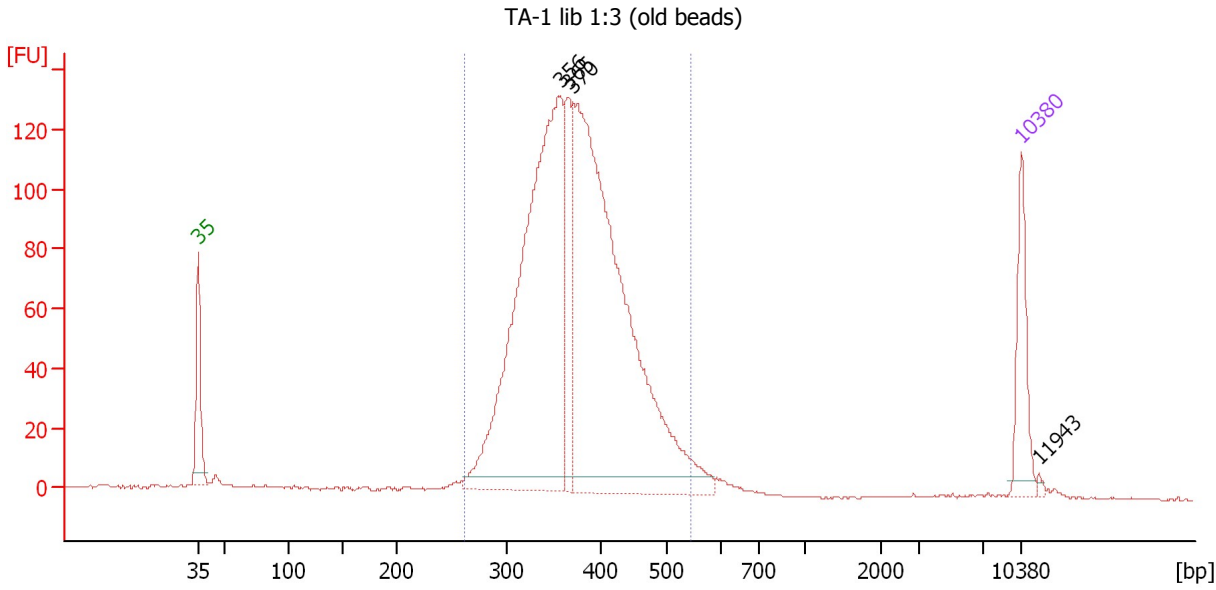
Region table for sample 2 : WSP-WT lib 1:2 (8cyc)

From [bp]	To [bp]	Average Size [bp]	Molarity [pmol/l]	Conc. [pg/μl]	Corr. Area	% of Total	Size distribution in CV [%]	Color
258	502	359	2,469.2	573.69	614.7	90	13.4	Blue

Assay Class: High Sensitivity DNA Assay
 Data Path: C:\...ents and Settings\Bioanalyzer\2012-08-28\2012-08-28_002.xad

Created: 8/28/2012 10:18:13 AM
 Modified: 8/28/2012 11:04:03 AM

Electropherogram Summary Continued ...



Overall Results for sample 3 : TA-1 lib 1:3 (old beads)

Number of peaks found: 4 Corr. Area 1: 1,793.5
 Noise: 0.2

Peak table for sample 3 : TA-1 lib 1:3 (old beads)

Peak	Size [bp]	Conc. [pg/μl]	Molarity [pmol/l]	Observations
1	35	125.00	5,411.3	Lower Marker
2	356	896.51	3,812.7	
3	365	132.36	549.1	
4	370	1,041.69	4,262.5	
5	10,380	75.00	10.9	Upper Marker
6	11,943	0.00	0.0	

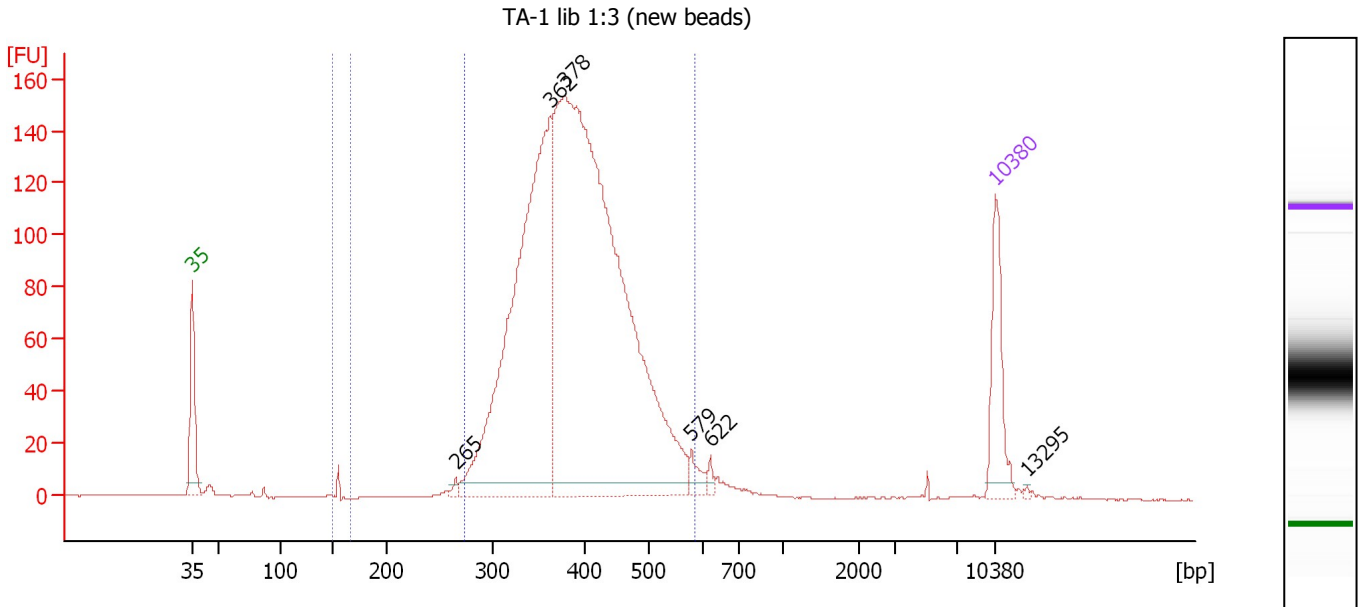
Region table for sample 3 : TA-1 lib 1:3 (old beads)

From [bp]	To [bp]	Average Size [bp]	Molarity [pmol/l]	Conc. [pg/μl]	Corr. Area	% of Total	Size distribution in CV [%]	Color
262	544	376	8,491.3	2,056.22	1,793.5	94	14.2	Blue

Assay Class: High Sensitivity DNA Assay
 Data Path: C:\...ents and Settings\Bioanalyzer\2012-08-28\2012-08-28_002.xad

Created: 8/28/2012 10:18:13 AM
 Modified: 8/28/2012 11:04:03 AM

Electropherogram Summary Continued ...



Overall Results for sample 4 : TA-1 lib 1:3 (new beads)

Number of peaks found: 6 Corr. Area 1: 4.3
 Noise: 0.2 Corr. Area 2: 2,158.3

Peak table for sample 4 : TA-1 lib 1:3 (new beads)

Peak	Size [bp]	Conc. [pg/μl]	Molarity [pmol/l]	Observations
1	35	125.00	5,411.3	Lower Marker
2	265	7.57	43.2	
3	362	789.32	3,302.9	
4	378	1,436.79	5,765.0	
5	579	19.56	51.2	
6	622	7.43	18.1	
7	10,380	75.00	10.9	Upper Marker
8	13,295	0.00	0.0	

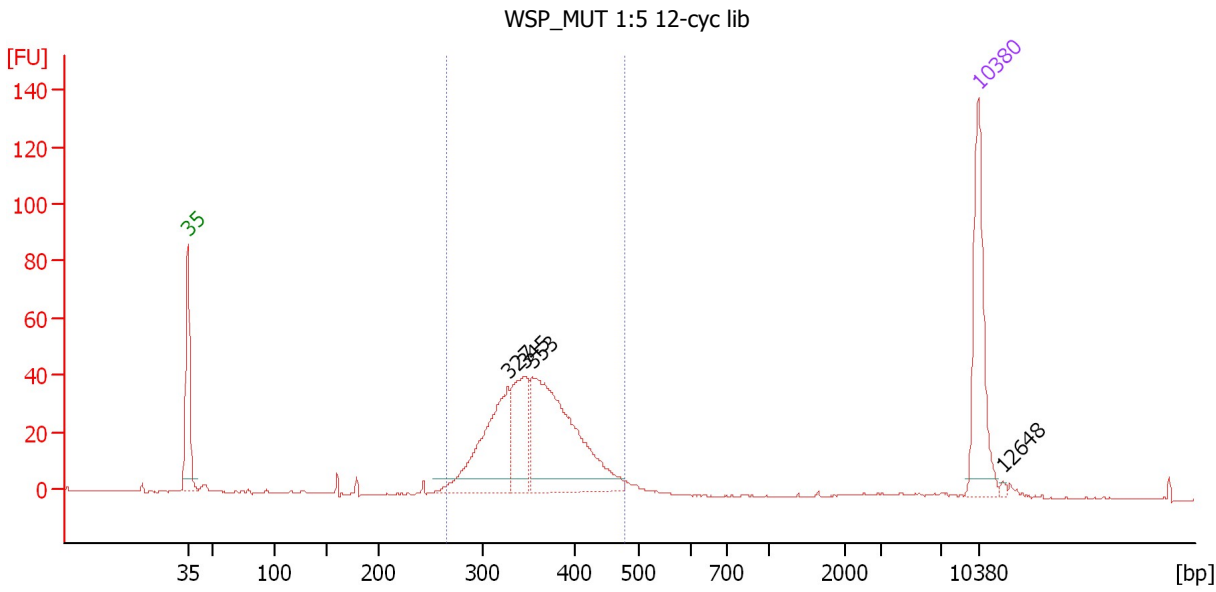
Region table for sample 4 : TA-1 lib 1:3 (new beads)

From [bp]	To [bp]	Average Size [bp]	Molarity [pmol/l]	Conc. [pg/μl]	Corr. Area	% of Total	Size distribution in CV [%]	Color
149	166	155	57.0	5.84	4.3	0	0.7	Blue
274	587	395	8,702.7	2,203.56	2,158.3	96	15.4	Dark Blue

Assay Class: High Sensitivity DNA Assay
 Data Path: C:\...ents and Settings\Bioanalyzer\2012-08-28\2012-08-28_002.xad

Created: 8/28/2012 10:18:13 AM
 Modified: 8/28/2012 11:04:03 AM

Electropherogram Summary Continued ...



Overall Results for sample 5 : WSP_MUT 1:5 12-cyc lib

Number of peaks found: 4 Corr. Area 1: 512.3
 Noise: 0.2

Peak table for sample 5 : WSP_MUT 1:5 12-cyc lib

Peak	Size [bp]	Conc. [pg/μl]	Molarity [pmol/l]	Observations
1	35	125.00	5,411.3	Lower Marker
2	327	133.99	620.9	
3	345	76.77	337.1	
4	353	219.09	939.8	
5	10,380	75.00	10.9	Upper Marker
6	12,648	0.00	0.0	

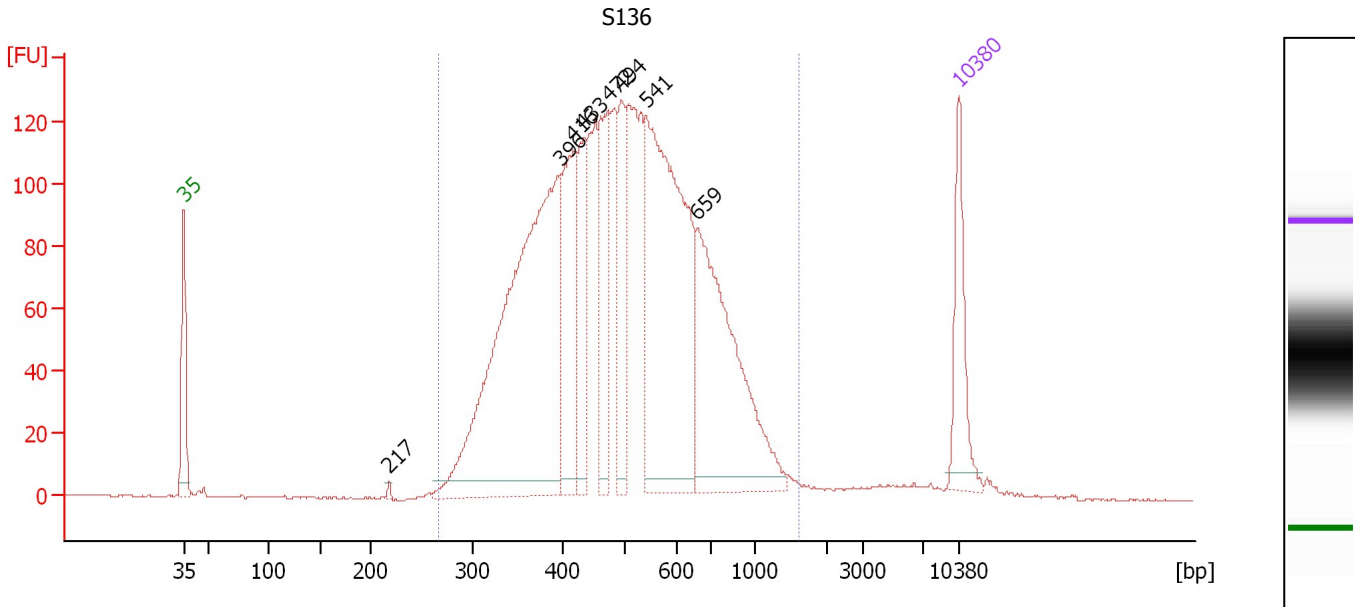
Region table for sample 5 : WSP_MUT 1:5 12-cyc lib

From [bp]	To [bp]	Average Size [bp]	Molarity [pmol/l]	Conc. [pg/μl]	Corr. Area	% of Total	Size distribution in CV [%]	Color
266	477	357	1,905.4	441.09	512.3	88	12.2	Blue

Assay Class: High Sensitivity DNA Assay
 Data Path: C:\...ents and Settings\Bioanalyzer\2012-08-28\2012-08-28_002.xad

Created: 8/28/2012 10:18:13 AM
 Modified: 8/28/2012 11:04:03 AM

Electropherogram Summary Continued ...



Overall Results for sample 6 : S136

Number of peaks found: 8 Corr. Area 1: 2,919.6
 Noise: 0.2

Peak table for sample 6 : S136

Peak	Size [bp]	Conc. [pg/μl]	Molarity [pmol/l]	Observations
1	35	125.00	5,411.3	Lower Marker
2	217	3.00	20.9	
3	396	729.97	2,791.9	
4	416	180.61	658.0	
5	433	122.58	428.9	
6	472	141.15	452.7	
7	494	115.81	355.3	
8	541	513.63	1,439.3	
9	659	339.73	780.6	
10	10,380	75.00	10.9	Upper Marker

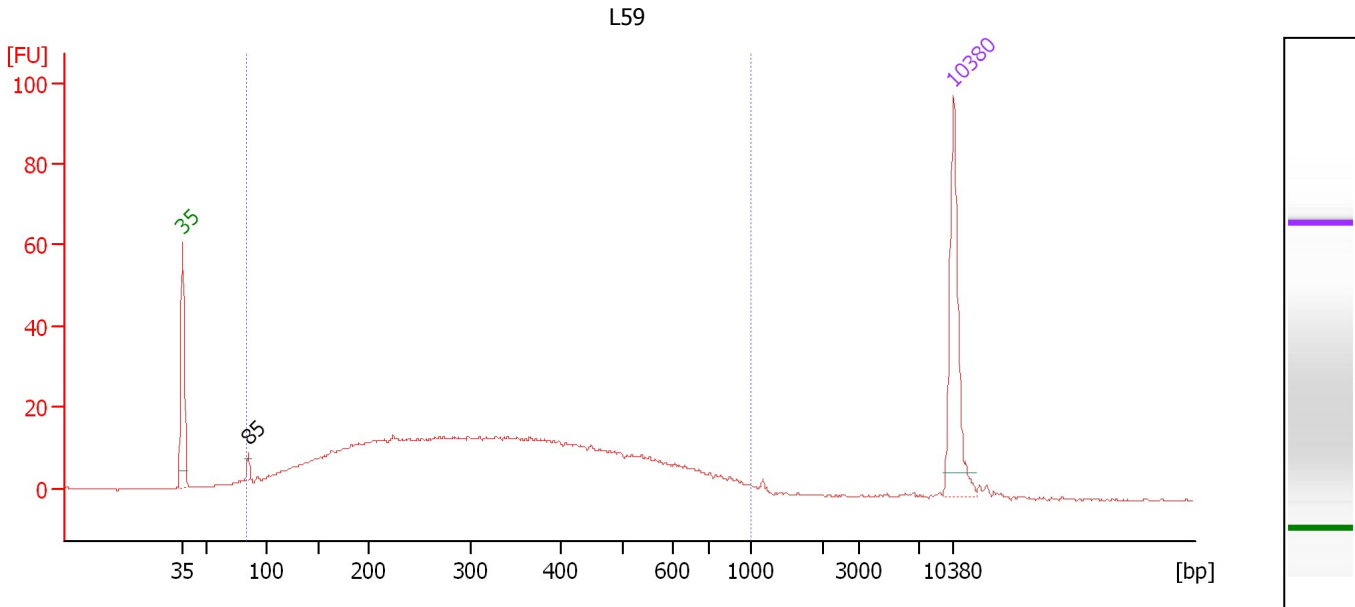
Region table for sample 6 : S136

From [bp]	To [bp]	Average Size [bp]	Molarity [pmol/l]	Conc. [pg/μl]	Corr. Area	% of Total	Size distribution in CV [%]	Color
266	1,608	522	8,728.8	2,664.91	2,919.6	98	34.3	Blue

Assay Class: High Sensitivity DNA Assay
 Data Path: C:\...ents and Settings\Bioanalyzer\2012-08-28\2012-08-28_002.xad

Created: 8/28/2012 10:18:13 AM
 Modified: 8/28/2012 11:04:03 AM

Electropherogram Summary Continued ...



Overall Results for sample 7 : L59

Number of peaks found: 1 Corr. Area 1: 662.7
 Noise: 0.2

Peak table for sample 7 : L59

Peak	Size [bp]	Conc. [pg/μl]	Molarity [pmol/l]	Observations
1	35	125.00	5,411.3	Lower Marker
2	85	7.66	137.1	
3	10,380	75.00	10.9	Upper Marker

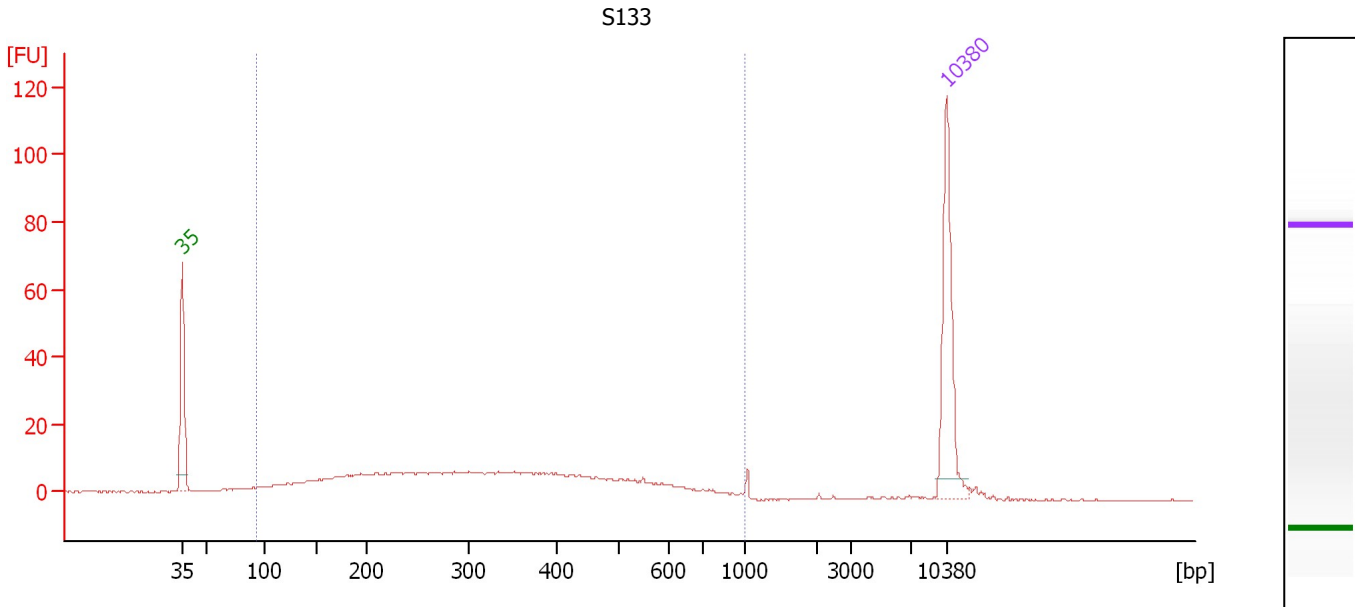
Region table for sample 7 : L59

From [bp]	To [bp]	Average Size [bp]	Molarity [pmol/l]	Conc. [pg/μl]	Corr. Area	% of Total	Size distribution in CV [%]	Color
84	1,000	350	6,310.9	1,015.29	662.7	95	47.6	Blue

Assay Class: High Sensitivity DNA Assay
 Data Path: C:\...ents and Settings\Bioanalyzer\2012-08-28\2012-08-28_002.xad

Created: 8/28/2012 10:18:13 AM
 Modified: 8/28/2012 11:04:03 AM

Electropherogram Summary Continued ...



Overall Results for sample 8 : S133

Number of peaks found: 0 Corr. Area 1: 316.4
 Noise: 0.1

Peak table for sample 8 : S133

Peak	Size [bp]	Conc. [pg/μl]	Molarity [pmol/l]	Observations
1	35	125.00	5,411.3	Lower Marker
2	10,380	75.00	10.9	Upper Marker

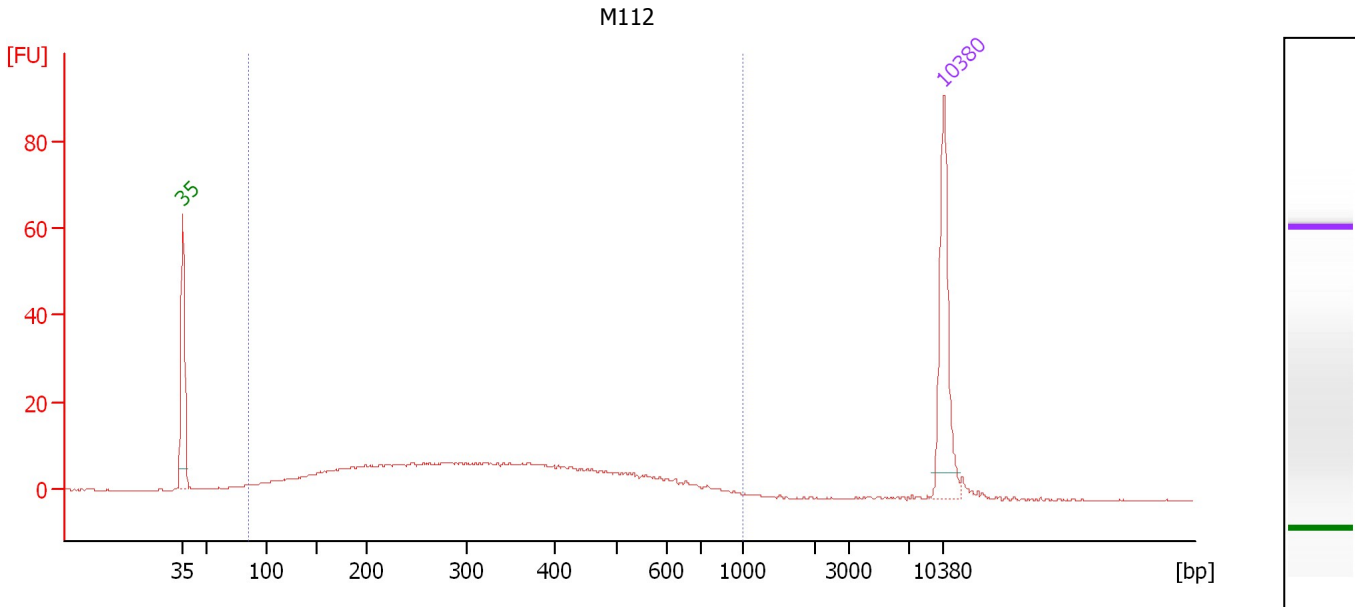
Region table for sample 8 : S133

From [bp]	To [bp]	Average Size [bp]	Molarity [pmol/l]	Conc. [pg/μl]	Corr. Area	% of Total	Size distribution in CV [%]	Color
93	1,000	343	2,304.8	375.54	316.4	92	45.2	Blue

Assay Class: High Sensitivity DNA Assay
 Data Path: C:\...ents and Settings\Bioanalyzer\2012-08-28\2012-08-28_002.xad

Created: 8/28/2012 10:18:13 AM
 Modified: 8/28/2012 11:04:03 AM

Electropherogram Summary Continued ...



Overall Results for sample 9 : M112

Number of peaks found: 0 Corr. Area 1: 327.0
 Noise: 0.1

Peak table for sample 9 : M112

Peak	Size [bp]	Conc. [pg/μl]	Molarity [pmol/l]	Observations
1	35	125.00	5,411.3	Lower Marker
2	10,380	75.00	10.9	Upper Marker

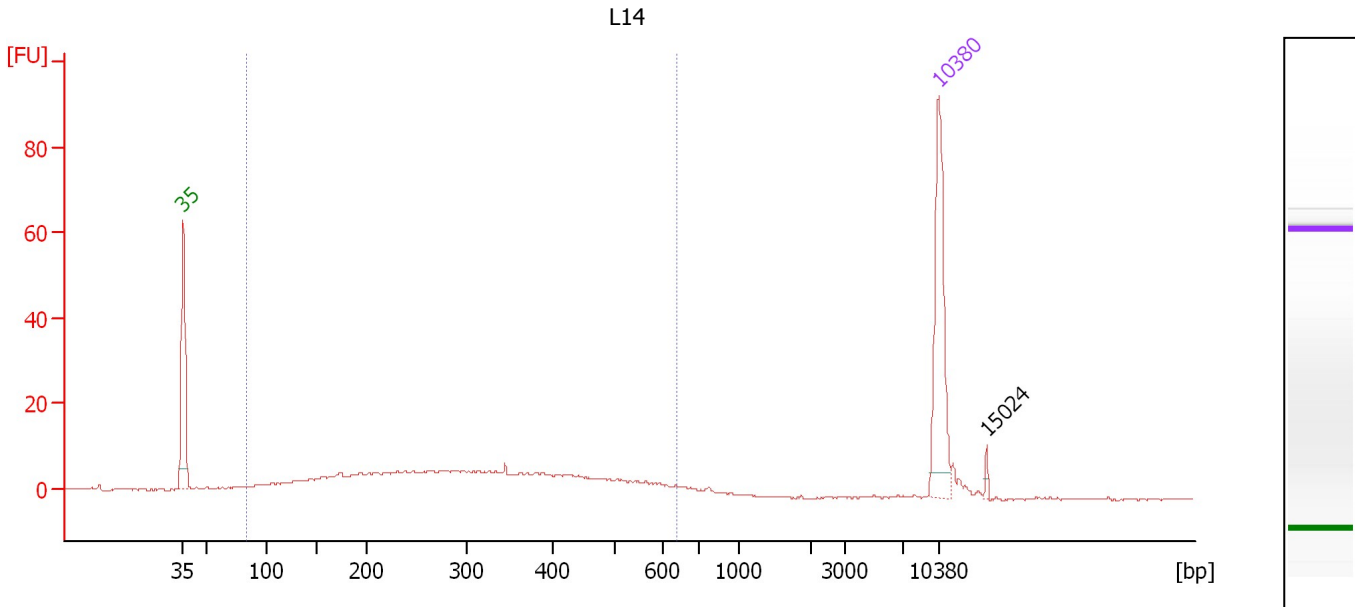
Region table for sample 9 : M112

From [bp]	To [bp]	Average Size [bp]	Molarity [pmol/l]	Conc. [pg/μl]	Corr. Area	% of Total	Size distribution in CV [%]	Color
86	1,000	342	3,176.5	510.72	327.0	95	45.6	Blue

Assay Class: High Sensitivity DNA Assay
 Data Path: C:\...ents and Settings\Bioanalyzer\2012-08-28\2012-08-28_002.xad

Created: 8/28/2012 10:18:13 AM
 Modified: 8/28/2012 11:04:03 AM

Electropherogram Summary Continued ...



Overall Results for sample 10 : L14

Number of peaks found: 1 Corr. Area 1: 218.1
 Noise: 0.2

Peak table for sample 10 : L14

Peak	Size [bp]	Conc. [pg/μl]	Molarity [pmol/l]	Observations
1	35	125.00	5,411.3	Lower Marker
2	10,380	75.00	10.9	Upper Marker
3	15,024	0.00	0.0	

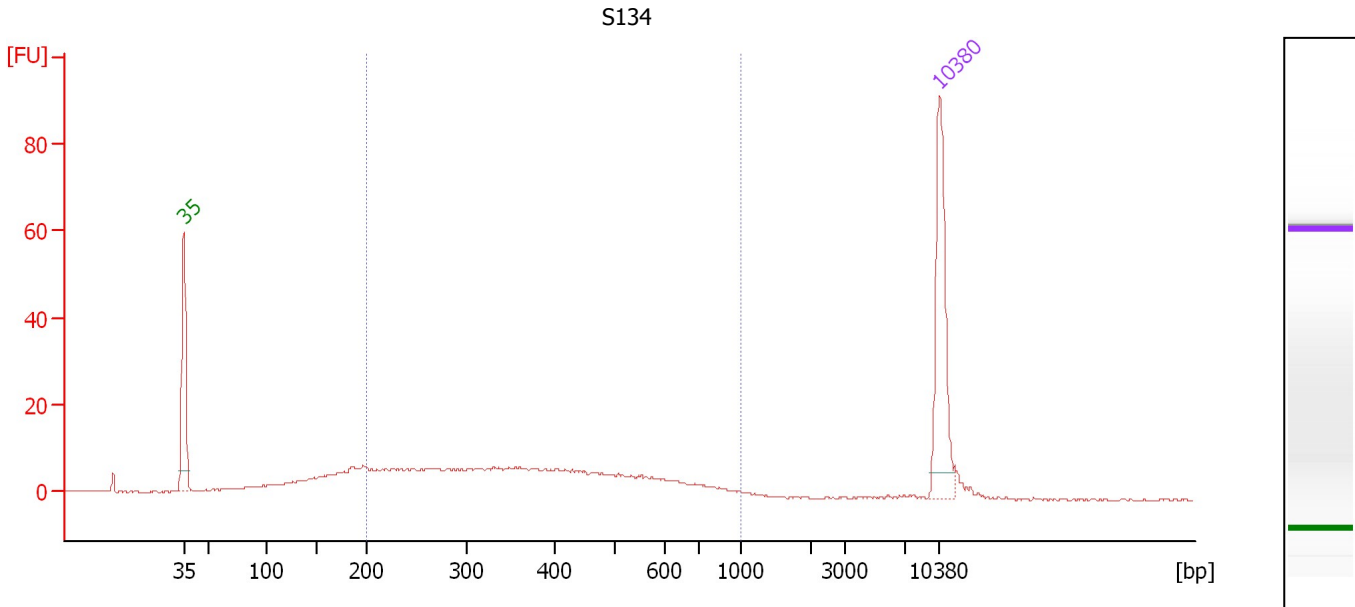
Region table for sample 10 : L14

From [bp]	To [bp]	Average Size [bp]	Molarity [pmol/l]	Conc. [pg/μl]	Corr. Area	% of Total	Size distribution in CV [%]	Color
84	638	319	2,086.4	326.17	218.1	89	40.1	Blue

Assay Class: High Sensitivity DNA Assay
 Data Path: C:\...ents and Settings\Bioanalyzer\2012-08-28\2012-08-28_002.xad

Created: 8/28/2012 10:18:13 AM
 Modified: 8/28/2012 11:04:03 AM

Electropherogram Summary Continued ...



Overall Results for sample 11 : S134

Number of peaks found: 0 Corr. Area 1: 223.2
 Noise: 0.2

Peak table for sample 11 : S134

Peak	Size [bp]	Conc. [pg/μl]	Molarity [pmol/l]	Observations
1	35	125.00	5,411.3	Lower Marker
2	10,380	75.00	10.9	Upper Marker

Region table for sample 11 : S134

From [bp]	To [bp]	Average Size [bp]	Molarity [pmol/l]	Conc. [pg/μl]	Corr. Area	% of Total	Size distribution in CV [%]	Color
200	1,000	397	1,352.0	295.48	223.2	74	38.2	Blue

Assay Class: High Sensitivity DNA Assay
Data Path: C:\...ents and Settings\Bioanalyzer\2012-08-28\2012-08-28_002.xad

Created: 8/28/2012 10:18:13 AM
Modified: 8/28/2012 11:04:03 AM

Gel Image

