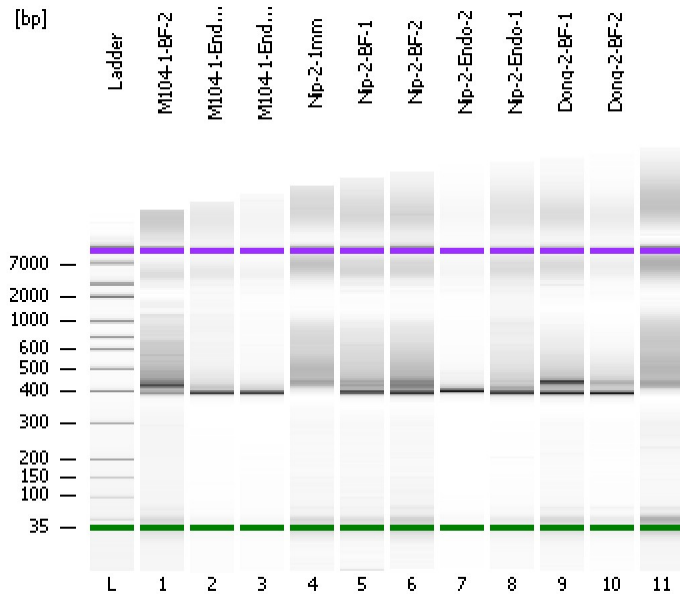


Assay Class: High Sensitivity DNA Assay
Data Path: C:\...ents and Settings\Bioanalyzer\2012-08-28\2012-08-28_003.xad

Created: 8/28/2012 11:06:12 AM
Modified: 8/28/2012 11:49:48 AM

Electrophoresis File Run Summary



Instrument Information:

Instrument Name: DE13701086 Firmware: C.01.069
Serial#: DE13701086 Type: G2938B

Assay Information:

Assay Origin Path: C:\Program Files\Agilent\2100 bioanalyzer\2100 expert\assays\dsDNA\High Sensitivity DNA.xsy
Assay Class: High Sensitivity DNA Assay
Version: 1.03
Assay Comments: Copyright © 2003-2010 Agilent Technologies

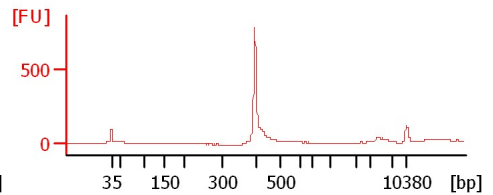
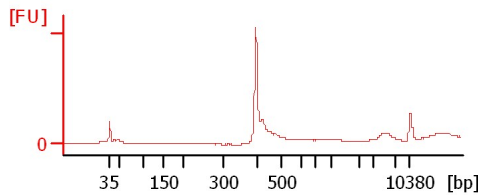
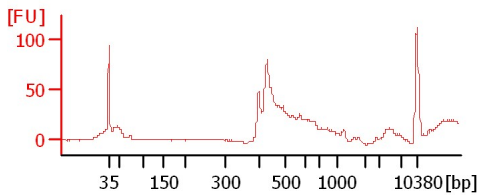
Chip Information:

Chip Lot #:
Reagent Kit Lot #:
Chip Comments:

M104-1-BF-2

M104-1-Endo-1

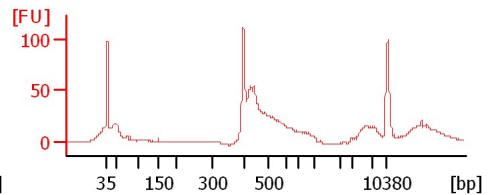
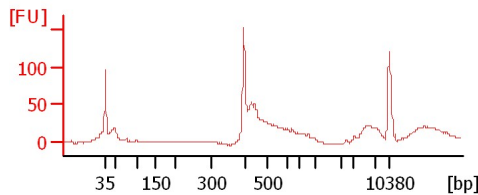
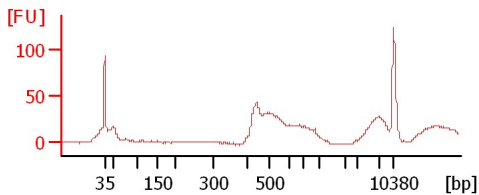
M104-1-Endo-2



Nip-2-1mm

Nip-2-BF-1

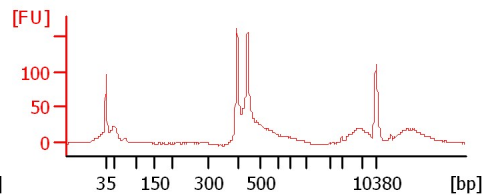
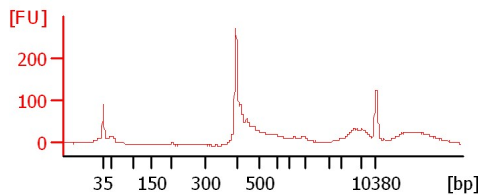
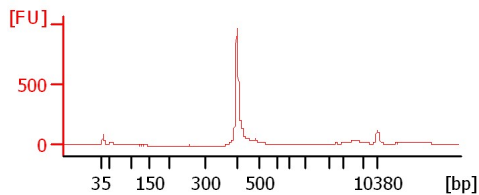
Nip-2-BF-2



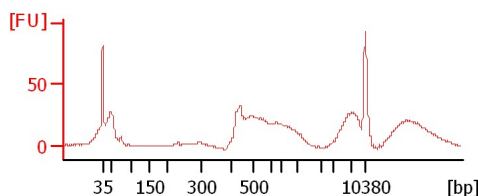
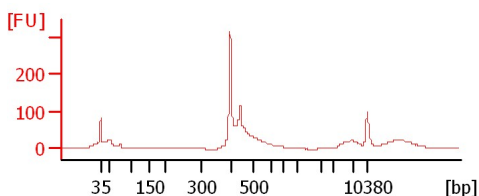
Nip-2-Endo-2

Nip-2-Endo-1

Dong-2-BF-1



Dong-2-BF-2



Assay Class: High Sensitivity DNA Assay
 Data Path: C:\...ents and Settings\Bioanalyzer\2012-08-28\2012-08-28_003.xad

Created: 8/28/2012 11:06:12 AM
 Modified: 8/28/2012 11:49:48 AM

Electrophoresis File Run Summary (Chip Summary)

Sample Name	Sample Comment	Rest. Digest	Status	Observation	Result Label	Result Color
M104-1-BF-2		<input type="checkbox"/>	✓			
M104-1-Endo-1		<input type="checkbox"/>	✓			
M104-1-Endo-2		<input type="checkbox"/>	✓			
Nip-2-1mm		<input type="checkbox"/>	✓			
Nip-2-BF-1		<input type="checkbox"/>	✓			
Nip-2-BF-2		<input type="checkbox"/>	✓			
Nip-2-Endo-2		<input type="checkbox"/>	✓			
Nip-2-Endo-1		<input type="checkbox"/>	✓			
Dong-2-BF-1		<input type="checkbox"/>	✓			
Dong-2-BF-2		<input type="checkbox"/>	✓			
Ladder		<input type="checkbox"/>	✓			

Chip Lot #

Reagent Kit Lot #

Chip Comments :

Assay Class: High Sensitivity DNA Assay
Data Path: C:\...ents and Settings\Bioanalyzer\2012-08-28\2012-08-28_003.xad

Created: 8/28/2012 11:06:12 AM
Modified: 8/28/2012 11:49:48 AM

Electrophoresis Assay Details

General Analysis Settings

Number of Available Sample and Ladder Wells (Max.) : 12
Minimum Visible Range [s] : 32
Maximum Visible Range [s] : 138
Start Analysis Time Range [s] : 33
End Analysis Time Range [s] : 137.5
Ladder Concentration [pg/μl] : 1950
Uses Standard Area for Ladder Fragments
Lower Marker Concentration [pg/μl] : 125
Upper Marker Concentration [pg/μl] : 75
Used Upper Marker for Quantitation
Standard Curve Fit is Point to Point
Show Data Aligned to Lower and Upper Marker

Integrator Settings

Integration Start Time [s] : 33.05
Integration End Time [s] : 137
Slope Threshold : 0.8
Height Threshold [FU] : 5
Area Threshold : 0.1
Width Threshold [s] : 0.6
Baseline Plateau [s] : 0.5

Filter Settings

Filter Width [s] : 0.5
Polynomial Order : 4

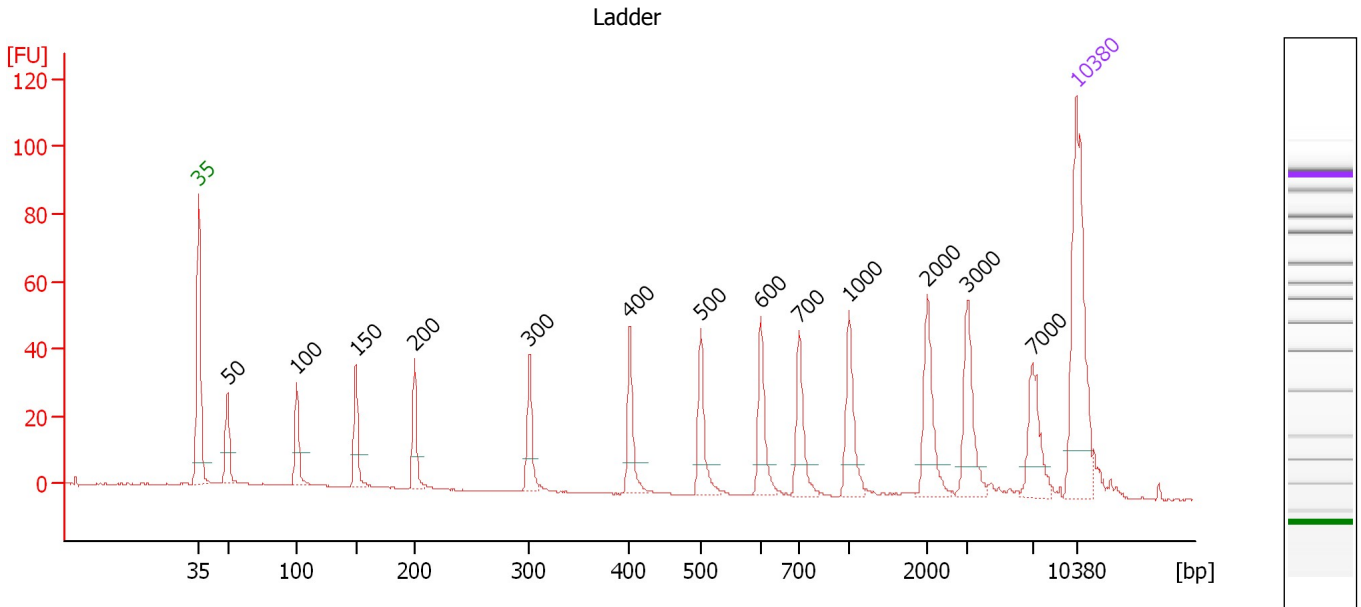
Ladder

Ladder Peak	Size	Area
1	35	160
2	50	210
3	100	208
4	150	221
5	200	242
6	300	270
7	400	305
8	500	306
9	600	336
10	700	321
11	1000	366
12	2000	413
13	3000	411
14	7000	400
15	10380	214

Assay Class: High Sensitivity DNA Assay
 Data Path: C:\...ents and Settings\Bioanalyzer\2012-08-28\2012-08-28_003.xad

Created: 8/28/2012 11:06:12 AM
 Modified: 8/28/2012 11:49:48 AM

Electropherogram Summary



Overall Results for Ladder

Noise: 0.1

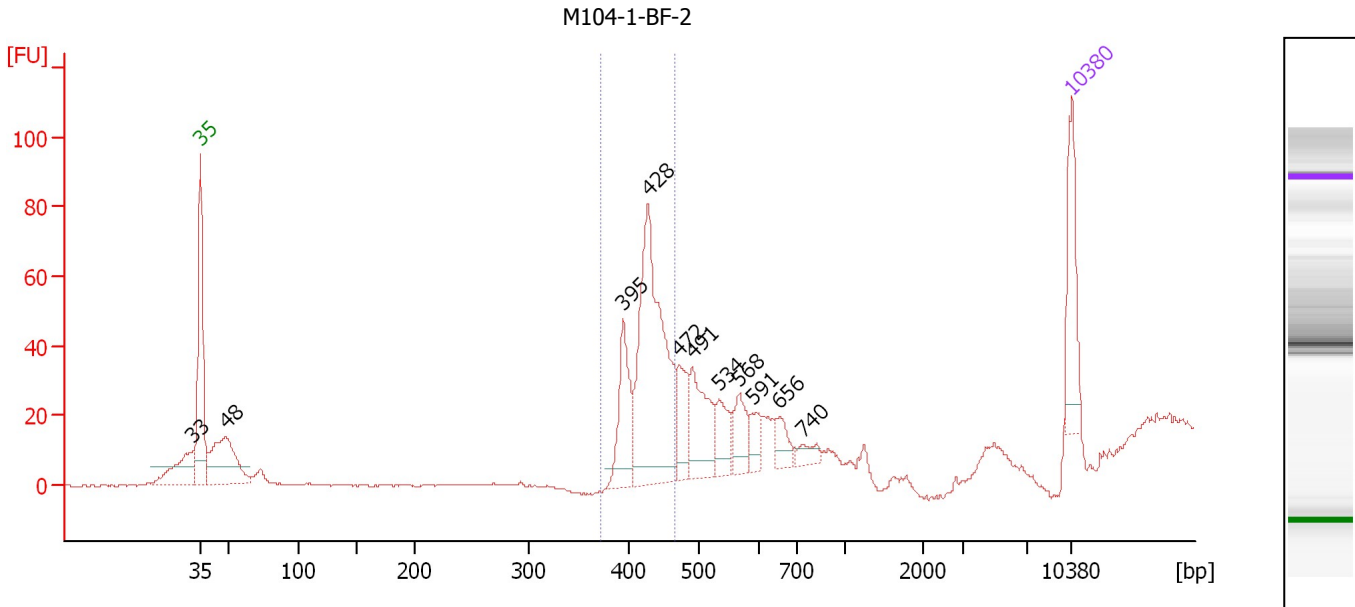
Peak table for Ladder

Peak	Size [bp]	Conc. [pg/μl]	Molarity [pmol/l]	Observations
1	35	125.00	5,411.3	Lower Marker
2	50	150.00	4,545.5	Ladder Peak
3	100	150.00	2,272.7	Ladder Peak
4	150	150.00	1,515.2	Ladder Peak
5	200	150.00	1,136.4	Ladder Peak
6	300	150.00	757.6	Ladder Peak
7	400	150.00	568.2	Ladder Peak
8	500	150.00	454.5	Ladder Peak
9	600	150.00	378.8	Ladder Peak
10	700	150.00	324.7	Ladder Peak
11	1,000	150.00	227.3	Ladder Peak
12	2,000	150.00	113.6	Ladder Peak
13	3,000	150.00	75.8	Ladder Peak
14	7,000	150.00	32.5	Ladder Peak
15	10,380	75.00	10.9	Upper Marker

Assay Class: High Sensitivity DNA Assay
 Data Path: C:\...ents and Settings\Bioanalyzer\2012-08-28\2012-08-28_003.xad

Created: 8/28/2012 11:06:12 AM
 Modified: 8/28/2012 11:49:48 AM

Electropherogram Summary Continued ...



Overall Results for sample 1 : M104-1-BF-2

Number of peaks found: 11 Corr. Area 1: 225.8
 Noise: 0.2

Peak table for sample 1 : M104-1-BF-2

Peak	Size [bp]	Conc. [pg/μl]	Molarity [pmol/l]	Observations
1	33	0.00	0.0	
2	35	125.00	5,411.3	Lower Marker
3	48	162.89	5,095.9	
4	395	98.92	379.3	
5	428	342.55	1,211.3	
6	472	60.32	193.6	
7	491	96.86	299.0	
8	534	44.28	125.6	
9	568	45.35	120.9	
10	591	26.68	68.4	
11	656	25.85	59.8	
12	740	17.95	36.8	
13	10,380	75.00	10.9	Upper Marker

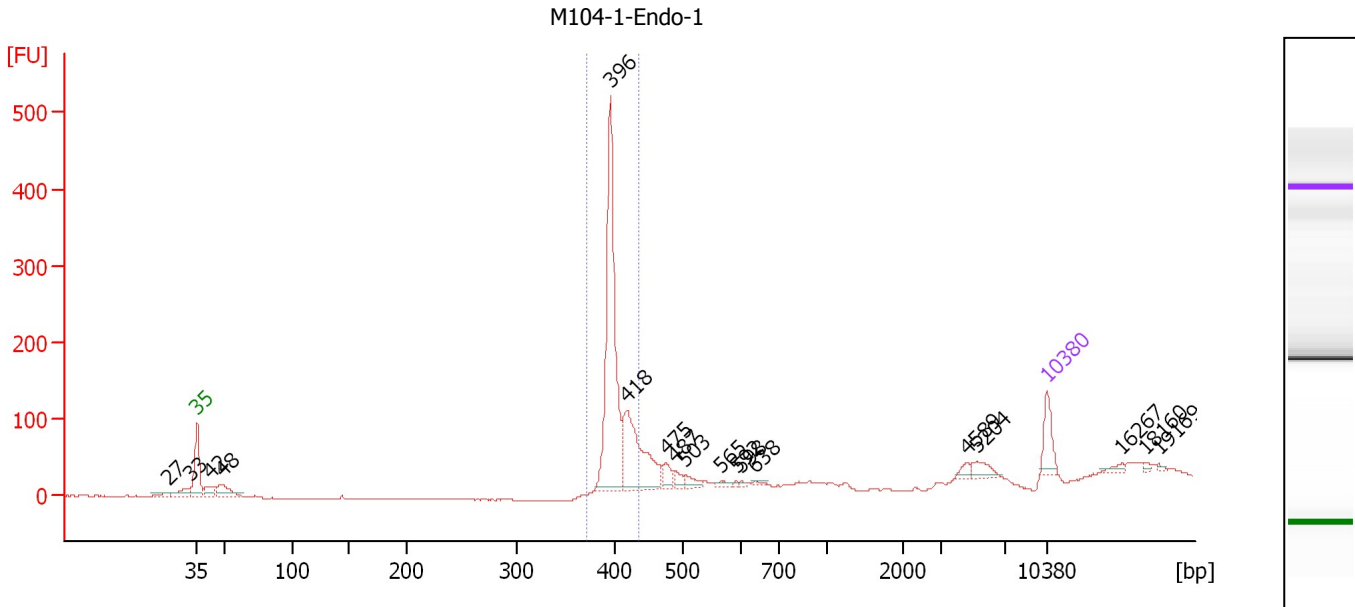
Region table for sample 1 : M104-1-BF-2

From [bp]	To [bp]	Average Size [bp]	Molarity [pmol/l]	Conc. [pg/μl]	Corr. Area	% of Total	Size distribution in CV [%]	Color
373	465	427	1,195.7	336.64	225.8	47	4.6	Blue

Assay Class: High Sensitivity DNA Assay
 Data Path: C:\...ents and Settings\Bioanalyzer\2012-08-28\2012-08-28_003.xad

Created: 8/28/2012 11:06:12 AM
 Modified: 8/28/2012 11:49:48 AM

Electropherogram Summary Continued ...



Overall Results for sample 2 : M104-1-Endo-1

Number of peaks found: 18 Corr. Area 1: 683.1
 Noise: 0.6

Peak table for sample 2 : M104-1-Endo-1

Peak	Size [bp]	Conc. [pg/μl]	Molarity [pmol/l]	Observations
1	27	0.00	0.0	
2	33	0.00	0.0	
3	35	125.00	5,411.3	Lower Marker
4	42	67.94	2,424.4	
5	48	111.70	3,511.7	
6	396	794.82	3,041.9	
7	418	379.05	1,373.5	
8	475	49.63	158.3	
9	487	29.01	90.2	
10	503	30.99	93.4	
11	565	13.54	36.3	
12	592	4.97	12.7	
13	598	4.94	12.5	
14	638	8.47	20.1	
15	4,589	18.00	5.9	
16	5,204	36.44	10.6	
17	10,380	75.00	10.9	Upper Marker
18	16,267	0.00	0.0	
19	18,160	0.00	0.0	
20	19,169	0.00	0.0	

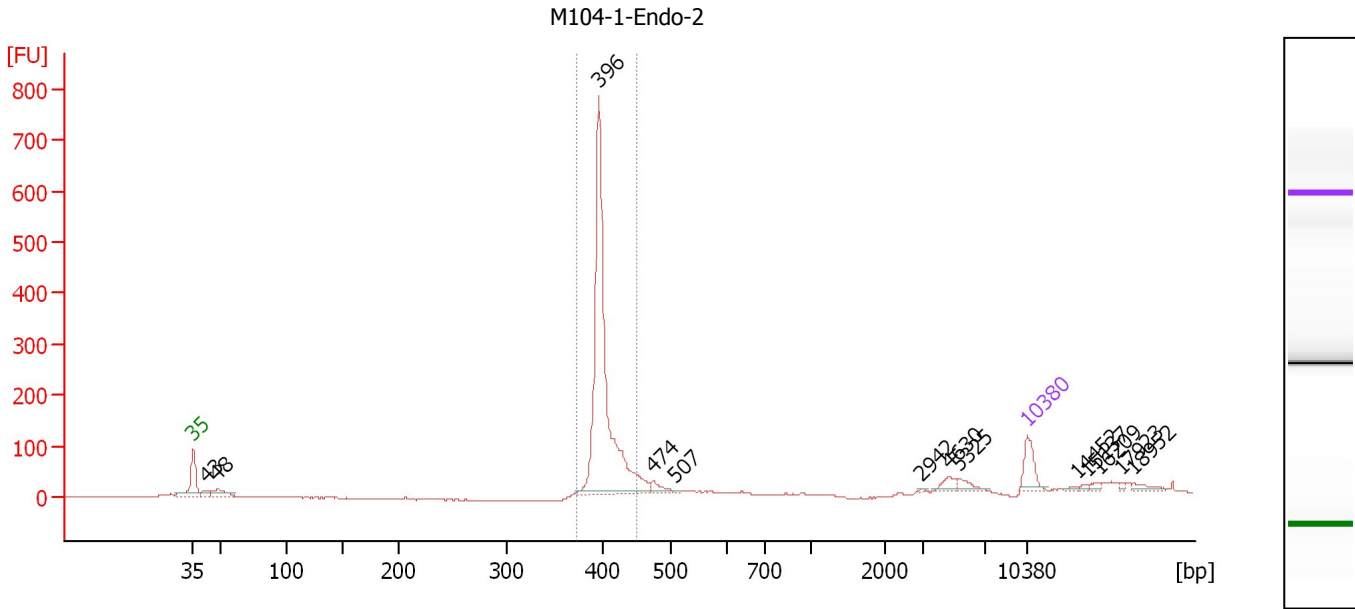
Region table for sample 2 : M104-1-Endo-1

From [bp]	To [bp]	Average Size [bp]	Molarity [pmol/l]	Conc. [pg/μl]	Corr. Area	% of Total	Size distribution in CV [%]	Color
372	436	403	3,665.2	972.74	683.1	66	2.9	Blue

Assay Class: High Sensitivity DNA Assay
 Data Path: C:\...ents and Settings\Bioanalyzer\2012-08-28\2012-08-28_003.xad

Created: 8/28/2012 11:06:12 AM
 Modified: 8/28/2012 11:49:48 AM

Electropherogram Summary Continued ...



Overall Results for sample 3 : M104-1-Endo-2

Number of peaks found: 13 Corr. Area 1: 1,079.4
 Noise: 0.8

Peak table for sample 3 : M104-1-Endo-2

Peak	Size [bp]	Conc. [pg/μl]	Molarity [pmol/l]	Observations
1	35	125.00	5,411.3	Lower Marker
2	43	35.90	1,276.8	
3	48	62.89	1,990.9	
4	396	1,223.26	4,677.7	
5	474	37.69	120.5	
6	507	5.19	15.5	
7	2,942	2.33	1.2	
8	4,630	29.01	9.5	
9	5,325	30.15	8.6	
10	10,380	75.00	10.9	Upper Marker
11	14,452	0.00	0.0	
12	15,137	0.00	0.0	
13	16,209	0.00	0.0	
14	17,923	0.00	0.0	
15	18,952	0.00	0.0	

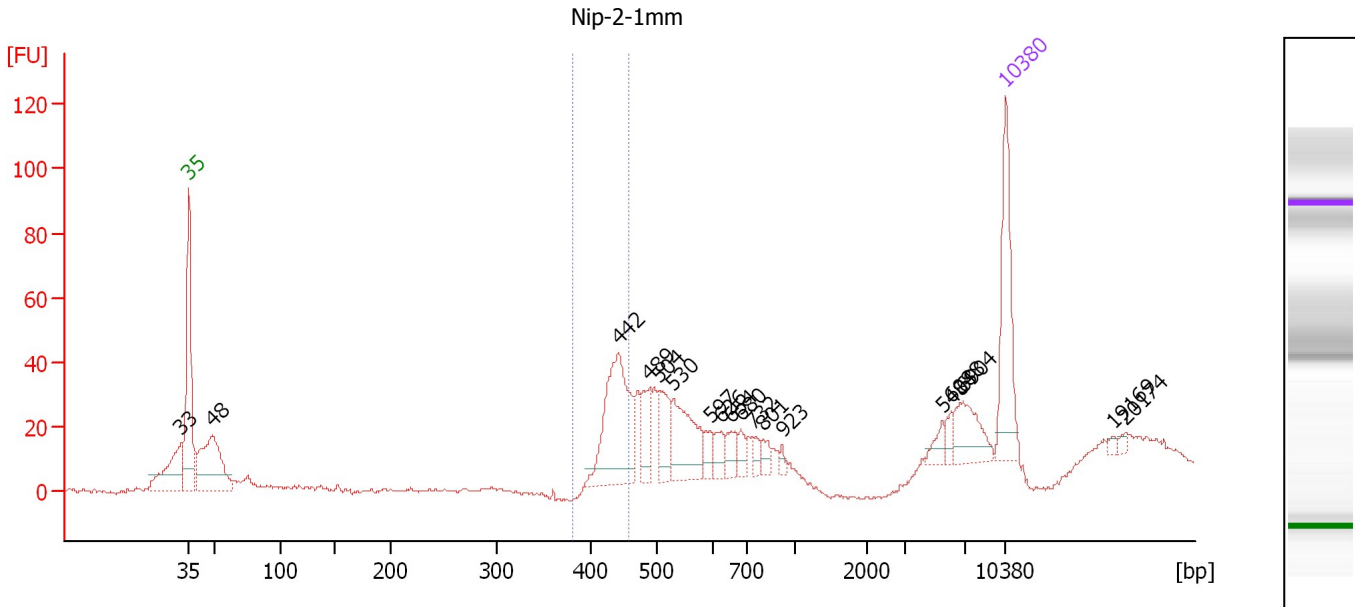
Region table for sample 3 : M104-1-Endo-2

From [bp]	To [bp]	Average Size [bp]	Molarity [pmol/l]	Conc. [pg/μl]	Corr. Area	% of Total	Size distribution in CV [%]	Color
373	450	403	4,433.4	1,176.91	1,079.4	74	3.4	Blue

Assay Class: High Sensitivity DNA Assay
 Data Path: C:\...ents and Settings\Bioanalyzer\2012-08-28\2012-08-28_003.xad

Created: 8/28/2012 11:06:12 AM
 Modified: 8/28/2012 11:49:48 AM

Electropherogram Summary Continued ...



Overall Results for sample 4 : Nip-2-1mm

Number of peaks found: 18 Corr. Area 1: 98.2
 Noise: 0.7

Peak table for sample 4 : Nip-2-1mm

Peak	Size [bp]	Conc. [pg/μl]	Molarity [pmol/l]	Observations
1	33	0.00	0.0	
2	35	125.00	5,411.3	Lower Marker
3	48	141.52	4,455.8	
4	442	143.58	492.1	
5	489	37.06	114.8	
6	504	41.64	125.3	
7	530	74.59	213.1	
8	597	14.66	37.2	
9	626	16.26	39.4	
10	654	18.34	42.5	
11	680	11.90	26.5	
12	732	9.63	19.9	
13	801	10.74	20.3	
14	923	4.52	7.4	
15	5,484	10.65	2.9	
16	6,088	8.80	2.2	
17	6,904	37.82	8.3	
18	10,380	75.00	10.9	Upper Marker
19	19,169	0.00	0.0	
20	20,174	0.00	0.0	

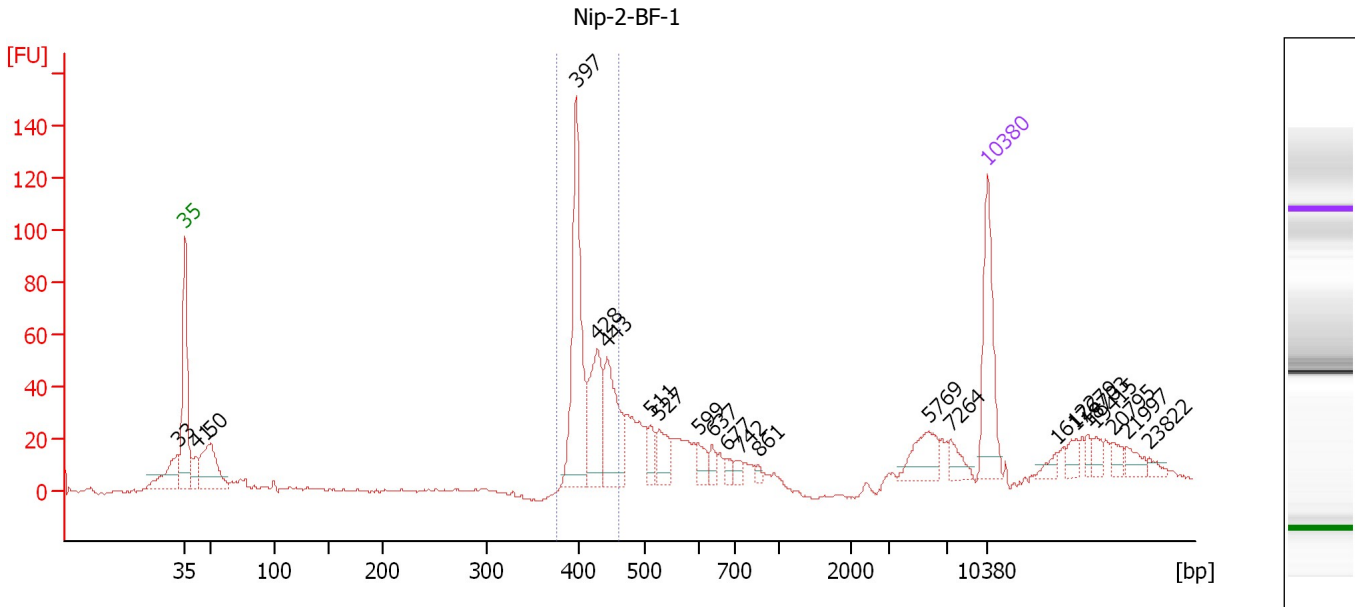
Region table for sample 4 : Nip-2-1mm

From [bp]	To [bp]	Average Size [bp]	Molarity [pmol/l]	Conc. [pg/μl]	Corr. Area	% of Total	Size distribution in CV [%]	Color
383	460	438	384.9	111.20	98.2	16	2.8	Blue

Assay Class: High Sensitivity DNA Assay
 Data Path: C:\...ents and Settings\Bioanalyzer\2012-08-28\2012-08-28_003.xad

Created: 8/28/2012 11:06:12 AM
 Modified: 8/28/2012 11:49:48 AM

Electropherogram Summary Continued ...



Overall Results for sample 5 : Nip-2-BF-1

Number of peaks found: 22 Corr. Area 1: 329.4
 Noise: 0.5

Peak table for sample 5 : Nip-2-BF-1

Peak	Size [bp]	Conc. [pg/μl]	Molarity [pmol/l]	Observations
1	33	0.00	0.0	
2	35	125.00	5,411.3	Lower Marker
3	41	29.52	1,081.1	
4	50	98.35	3,006.0	
5	397	182.98	698.5	
6	428	90.82	321.9	
7	443	92.13	315.1	
8	511	19.21	57.0	
9	527	30.31	87.1	
10	599	16.81	42.5	
11	637	10.37	24.6	
12	677	7.68	17.2	
13	742	8.36	17.1	
14	861	4.57	8.0	
15	5,769	35.86	9.4	
16	7,264	14.52	3.0	
17	10,380	75.00	10.9	Upper Marker
18	16,122	0.00	0.0	
19	17,679	0.00	0.0	
20	18,703	0.00	0.0	
21	19,415	0.00	0.0	
22	20,795	0.00	0.0	
23	21,997	0.00	0.0	
24	23,822	0.00	0.0	

Assay Class: High Sensitivity DNA Assay
Data Path: C:\...ents and Settings\Bioanalyzer\2012-08-28\2012-08-28_003.xad

Created: 8/28/2012 11:06:12 AM
Modified: 8/28/2012 11:49:48 AM

Electropherogram Summary Continued ...

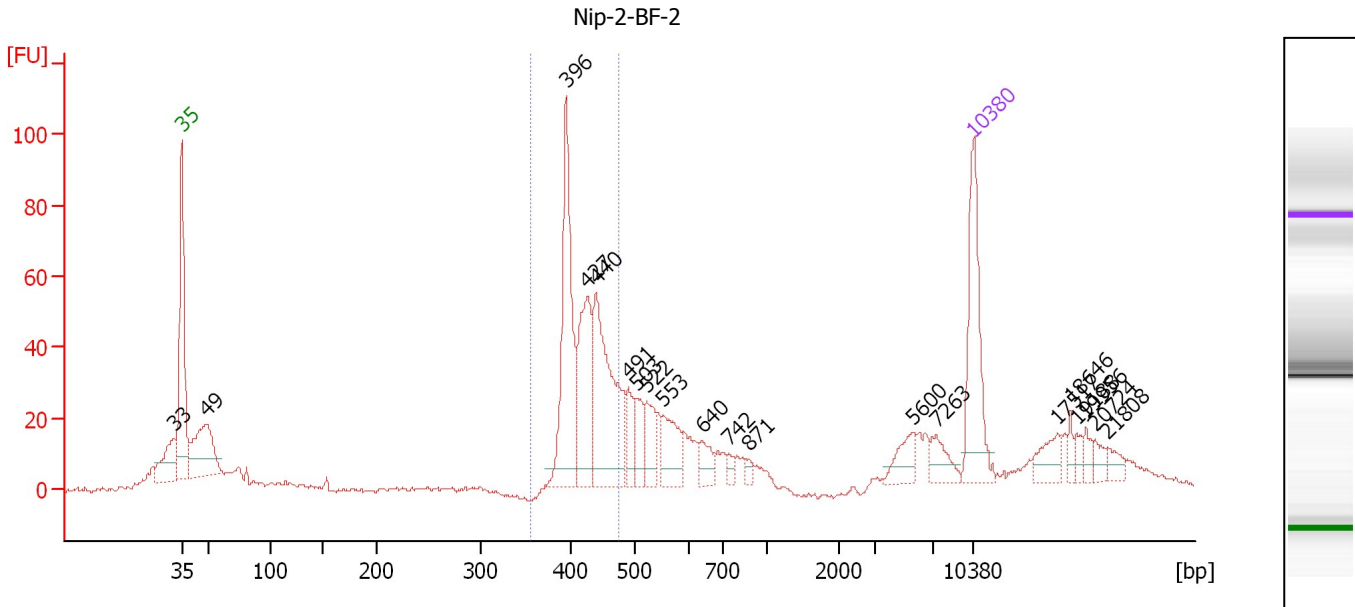
... Region table for sample 5 : Nip-2-BF-1

From [bp]	To [bp]	Average Size [bp]	Molarity [pmol/l]	Conc. [pg/μl]	Corr. Area	% of Total	Size distribution in CV [%]	Color
375	461	416	1,245.0	341.01	329.4	36	5.1	■

Assay Class: High Sensitivity DNA Assay
 Data Path: C:\...ents and Settings\Bioanalyzer\2012-08-28\2012-08-28_003.xad

Created: 8/28/2012 11:06:12 AM
 Modified: 8/28/2012 11:49:48 AM

Electropherogram Summary Continued ...



Overall Results for sample 6 : Nip-2-BF-2

Number of peaks found: 20 Corr. Area 1: 342.4
 Noise: 0.7

Peak table for sample 6 : Nip-2-BF-2

Peak	Size [bp]	Conc. [pg/μl]	Molarity [pmol/l]	Observations
1	33	0.00	0.0	
2	35	125.00	5,411.3	Lower Marker
3	49	107.38	3,308.6	
4	396	151.37	579.8	
5	427	92.67	328.9	
6	440	148.18	510.1	
7	491	27.51	84.9	
8	503	23.82	71.8	
9	522	29.48	85.5	
10	553	38.52	105.5	
11	640	17.87	42.3	
12	742	5.80	11.8	
13	871	4.44	7.7	
14	5,600	20.09	5.4	
15	7,263	17.65	3.7	
16	10,380	75.00	10.9	Upper Marker
17	17,517	0.00	0.0	
18	18,646	0.00	0.0	
19	19,188	0.00	0.0	
20	19,956	0.00	0.0	
21	20,724	0.00	0.0	
22	21,808	0.00	0.0	

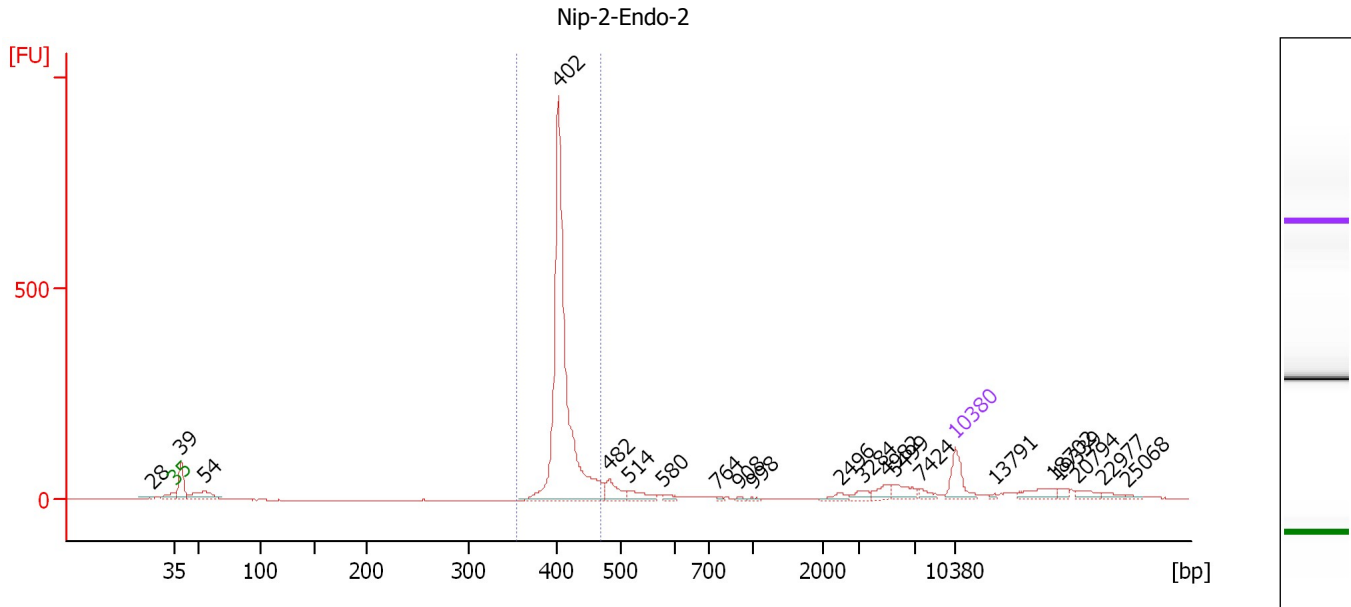
Region table for sample 6 : Nip-2-BF-2

From [bp]	To [bp]	Average Size [bp]	Molarity [pmol/l]	Conc. [pg/μl]	Corr. Area	% of Total	Size distribution in CV [%]	Color
357	474	422	1,305.7	362.65	342.4	36	5.9	Blue

Assay Class: High Sensitivity DNA Assay
 Data Path: C:\...ents and Settings\Bioanalyzer\2012-08-28\2012-08-28_003.xad

Created: 8/28/2012 11:06:12 AM
 Modified: 8/28/2012 11:49:48 AM

Electropherogram Summary Continued ...



Overall Results for sample 7 : Nip-2-Endo-2

Number of peaks found: 21 Corr. Area 1: 1,432.7
 Noise: 0.4

Peak table for sample 7 : Nip-2-Endo-2

Peak	Size [bp]	Conc. [pg/μl]	Molarity [pmol/l]	Observations
1	28	0.00	0.0	
2	35	125.00	5,411.3	Lower Marker
3	39	141.83	5,462.2	
4	54	114.97	3,217.3	
5	402	1,255.86	4,733.1	
6	482	68.30	214.7	
7	514	48.77	143.7	
8	580	13.89	36.3	
9	764	4.21	8.3	
10	908	4.75	7.9	
11	998	5.19	7.9	
12	2,496	15.49	9.4	
13	3,284	21.46	9.9	
14	4,982	32.59	9.9	
15	5,499	43.08	11.9	
16	7,424	18.44	3.8	
17	10,380	75.00	10.9	Upper Marker
18	13,791	0.00	0.0	
19	18,702	0.00	0.0	
20	19,339	0.00	0.0	
21	20,794	0.00	0.0	
22	22,977	0.00	0.0	
23	25,068	0.00	0.0	

Assay Class: High Sensitivity DNA Assay
Data Path: C:\...ents and Settings\Bioanalyzer\2012-08-28\2012-08-28_003.xad

Created: 8/28/2012 11:06:12 AM
Modified: 8/28/2012 11:49:48 AM

Electropherogram Summary Continued ...

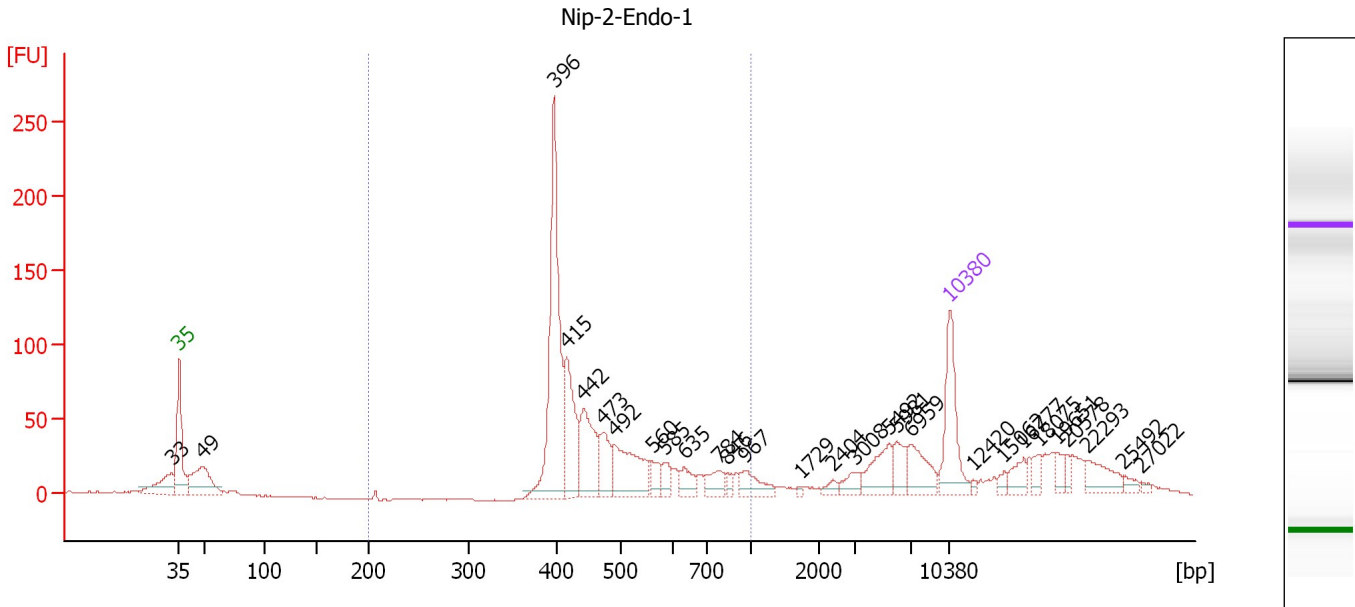
... Region table for sample 7 : Nip-2-Endo-2

From [bp]	To [bp]	Average Size [bp]	Molarity [pmol/l]	Conc. [pg/μl]	Corr. Area	% of Total	Size distribution in CV [%]	Color
355	468	410	4,411.2	1,191.68	1,432.7	64	4.0	■

Assay Class: High Sensitivity DNA Assay
 Data Path: C:\...ents and Settings\Bioanalyzer\2012-08-28\2012-08-28_003.xad

Created: 8/28/2012 11:06:12 AM
 Modified: 8/28/2012 11:49:48 AM

Electropherogram Summary Continued ...



Overall Results for sample 8 : Nip-2-Endo-1

Number of peaks found: 28 Corr. Area 1: 879.3
 Noise: 0.4

Peak table for sample 8 : Nip-2-Endo-1

Peak	Size [bp]	Conc. [pg/μl]	Molarity [pmol/l]	Observations
1	33	0.00	0.0	
2	35	125.00	5,411.3	Lower Marker
3	49	107.60	3,354.9	
4	396	289.50	1,108.0	
5	415	112.77	411.3	
6	442	92.22	316.3	
7	473	51.45	164.7	
8	492	99.61	306.8	
9	560	22.13	59.8	
10	585	19.25	49.9	
11	635	22.39	53.4	
12	784	26.14	50.5	
13	846	8.43	15.1	
14	967	29.28	45.9	
15	1,729	2.38	2.1	
16	2,404	7.67	4.8	
17	3,008	15.16	7.6	
18	5,492	43.39	12.0	
19	5,981	26.38	6.7	
20	6,959	41.48	9.0	
21	10,380	75.00	10.9	Upper Marker
22	12,420	0.00	0.0	
23	15,062	0.00	0.0	
24	16,777	0.00	0.0	
25	18,075	0.00	0.0	
26	19,651	0.00	0.0	

Assay Class: High Sensitivity DNA Assay
 Data Path: C:\...ents and Settings\Bioanalyzer\2012-08-28\2012-08-28_003.xad


Created: 8/28/2012 11:06:12 AM
 Modified: 8/28/2012 11:49:48 AM

Electropherogram Summary Continued ...

... Peak table for sample 8 : Nip-2-Endo-1

Peak	Size [bp]	Conc. [pg/μl]	Molarity [pmol/l]	Observations
27	20,578	0.00	0.0	
28	22,293	0.00	0.0	
29	25,492	0.00	0.0	
30	27,022	0.00	0.0	

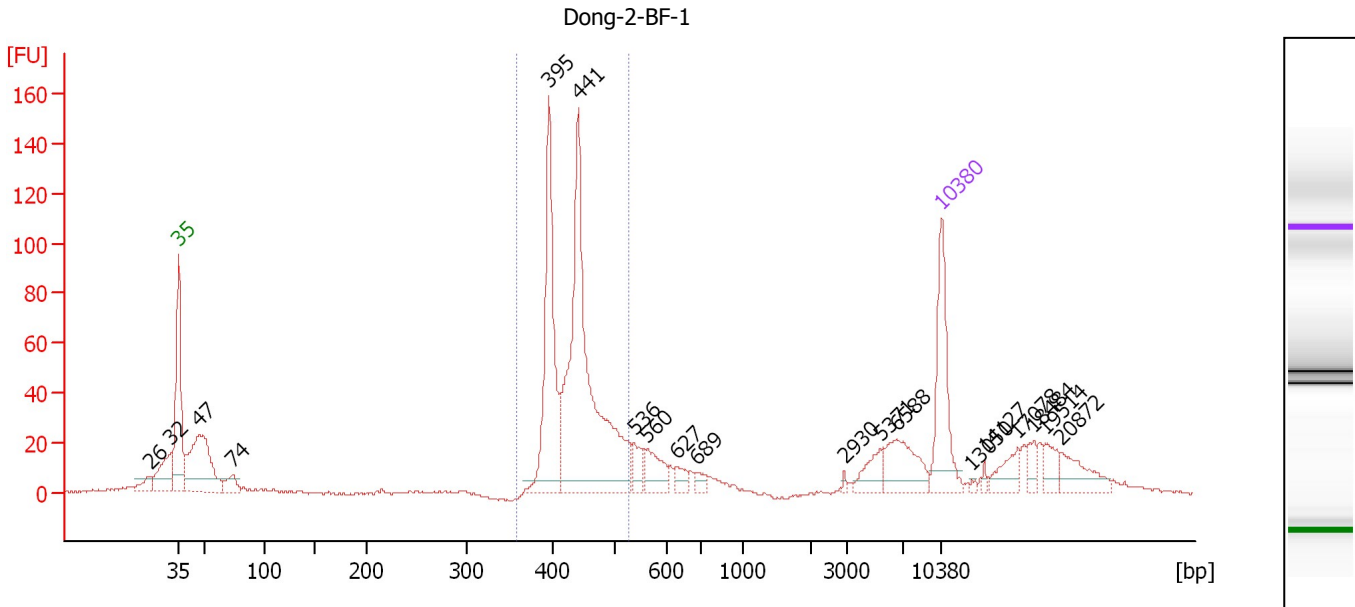
Region table for sample 8 : Nip-2-Endo-1

From [bp]	To [bp]	Average Size [bp]	Molarity [pmol/l]	Conc. [pg/μl]	Corr. Area	% of Total	Size distribution in CV [%]	Color
200	1,000	487	2,390.1	720.17	879.3	60	26.4	

Assay Class: High Sensitivity DNA Assay
 Data Path: C:\...ents and Settings\Bioanalyzer\2012-08-28\2012-08-28_003.xad

Created: 8/28/2012 11:06:12 AM
 Modified: 8/28/2012 11:49:48 AM

Electropherogram Summary Continued ...



Overall Results for sample 9 : Dong-2-BF-1

Number of peaks found: 19 Corr. Area 1: 566.3
 Noise: 0.6

Peak table for sample 9 : Dong-2-BF-1

Peak	Size [bp]	Conc. [pg/μl]	Molarity [pmol/l]	Observations
1	26	0.00	0.0	
2	32	0.00	0.0	
3	35	125.00	5,411.3	Lower Marker
4	47	173.34	5,533.8	
5	74	24.32	495.5	
6	395	188.38	721.8	
7	441	379.05	1,302.9	
8	536	18.52	52.4	
9	560	31.85	86.2	
10	627	13.50	32.6	
11	689	9.52	20.9	
12	2,930	2.08	1.1	
13	5,371	22.93	6.5	
14	6,588	47.81	11.0	
15	10,380	75.00	10.9	Upper Marker
16	13,050	0.00	0.0	
17	14,127	0.00	0.0	
18	17,078	0.00	0.0	
19	18,484	0.00	0.0	
20	19,514	0.00	0.0	
21	20,872	0.00	0.0	

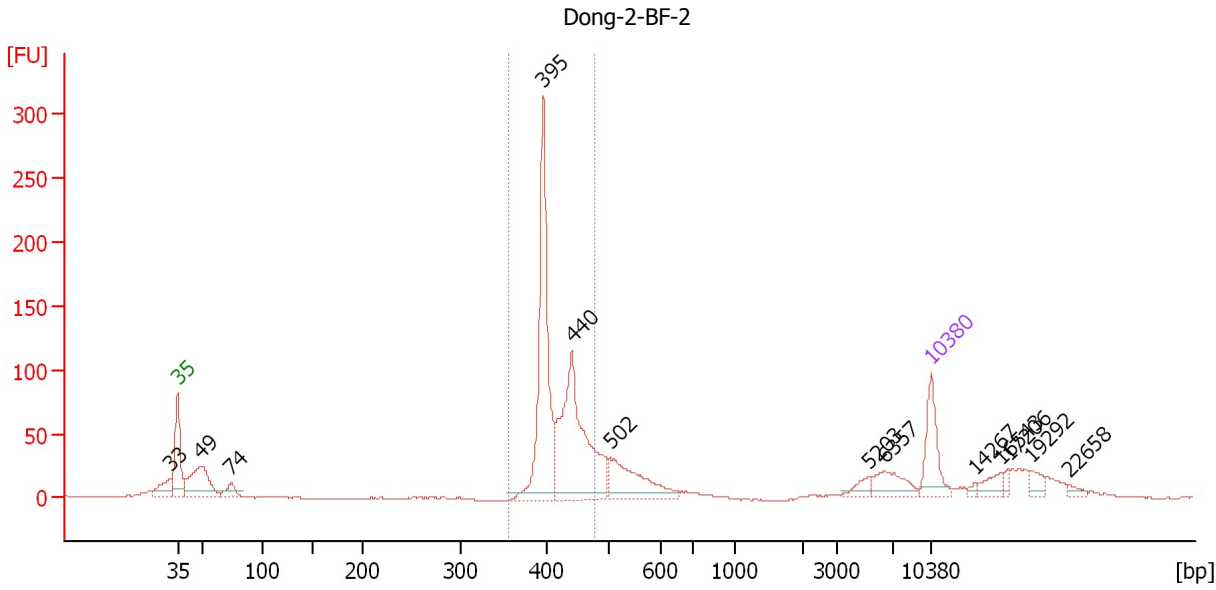
Region table for sample 9 : Dong-2-BF-1

From [bp]	To [bp]	Average Size [bp]	Molarity [pmol/l]	Conc. [pg/μl]	Corr. Area	% of Total	Size distribution in CV [%]	Color
358	527	435	1,945.0	554.87	566.3	49	8.2	Blue

Assay Class: High Sensitivity DNA Assay
 Data Path: C:\...ents and Settings\Bioanalyzer\2012-08-28\2012-08-28_003.xad

Created: 8/28/2012 11:06:12 AM
 Modified: 8/28/2012 11:49:48 AM

Electropherogram Summary Continued ...



Overall Results for sample 10 : Dong-2-BF-2

Number of peaks found: 13 Corr. Area 1: 663.0
 Noise: 0.4

Peak table for sample 10 : Dong-2-BF-2

Peak	Size [bp]	Conc. [pg/μl]	Molarity [pmol/l]	Observations
1	33	0.00	0.0	
2	35	125.00	5,411.3	Lower Marker
3	49	175.17	5,391.5	
4	74	34.99	712.1	
5	395	407.39	1,562.8	
6	440	392.99	1,353.7	
7	502	143.62	433.6	
8	5,203	19.76	5.8	
9	6,357	50.43	12.0	
10	10,380	75.00	10.9	Upper Marker
11	14,267	0.00	0.0	
12	16,543	0.00	0.0	
13	17,206	0.00	0.0	
14	19,292	0.00	0.0	
15	22,658	0.00	0.0	

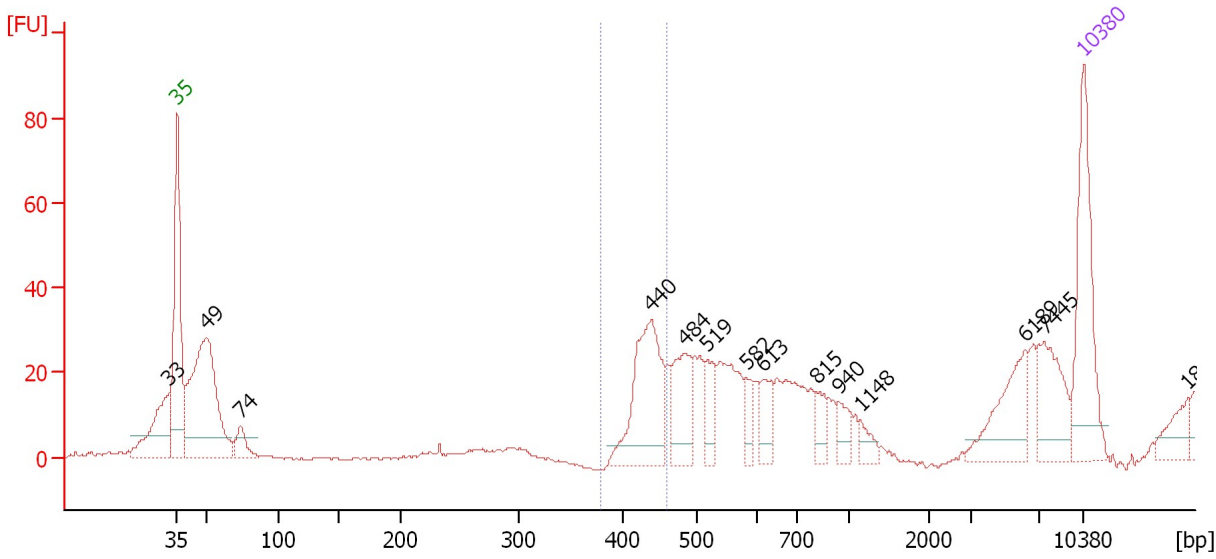
Region table for sample 10 : Dong-2-BF-2

From [bp]	To [bp]	Average Size [bp]	Molarity [pmol/l]	Conc. [pg/μl]	Corr. Area	% of Total	Size distribution in CV [%]	Color
356	476	416	2,616.4	716.16	663.0	50	6.2	Blue

Assay Class: High Sensitivity DNA Assay
 Data Path: C:\...ents and Settings\Bioanalyzer\2012-08-28\2012-08-28_003.xad

Created: 8/28/2012 11:06:12 AM
 Modified: 8/28/2012 11:49:48 AM

Electropherogram Summary Continued ...



Overall Results for sample 11 :

Number of peaks found: 21 Corr. Area 1: 96.9
 Noise: 0.4


Peak table for sample 11 :

Peak	Size [bp]	Conc. [pg/μl]	Molarity [pmol/l]	Observations
1	33	0.00	0.0	
2	35	125.00	5,411.3	Lower Marker
3	49	217.39	6,662.0	
4	74	21.76	446.9	
5	440	111.67	384.7	
6	484	51.53	161.3	
7	519	25.11	73.3	
8	582	14.56	37.9	
9	613	23.50	58.1	
10	815	15.07	28.0	
11	940	14.03	22.6	
12	1,148	9.67	12.8	
13	6,189	48.31	11.8	
14	7,445	44.22	9.0	
15	10,380	75.00	10.9	Upper Marker
16	18,079	0.00	0.0	
17	19,619	0.00	0.0	
18	20,774	0.00	0.0	
19	23,709	0.00	0.0	
20	24,623	0.00	0.0	
21	25,201	0.00	0.0	
22	27,992	0.00	0.0	
23	29,339	0.00	0.0	

Assay Class: High Sensitivity DNA Assay
Data Path: C:\...ents and Settings\Bioanalyzer\2012-08-28\2012-08-28_003.xad

Created: 8/28/2012 11:06:12 AM
Modified: 8/28/2012 11:49:48 AM

Electropherogram Summary Continued ...**... Region table for sample 11 :**

From [bp]	To [bp]	Average Size [bp]	Molarity [pmol/l]	Conc. [pg/μl]	Corr. Area	% of Total	Size distribution in CV [%]	Color
380	461	434	351.2	100.57	96.9	11	3.5	

Assay Class: High Sensitivity DNA Assay
Data Path: C:\...ents and Settings\Bioanalyzer\2012-08-28\2012-08-28_003.xad

Created: 8/28/2012 11:06:12 AM
Modified: 8/28/2012 11:49:48 AM

Gel Image

