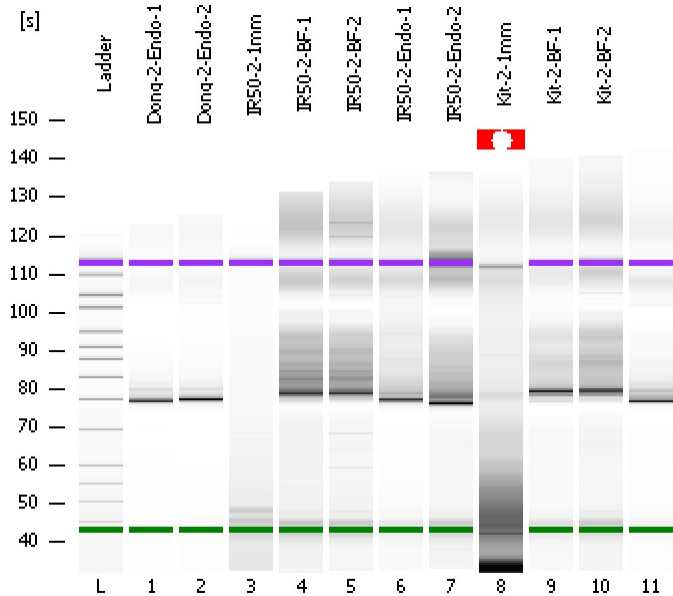


Assay Class: High Sensitivity DNA Assay
Data Path: C:\...ents and Settings\Bioanalyzer\2012-08-28\2012-08-28_004.xad

Created: 8/28/2012 11:52:38 AM
Modified: 8/28/2012 12:41:01 PM

Electrophoresis File Run Summary



Instrument Information:

Instrument Name: DE13701086 Firmware: C.01.069
Serial#: DE13701086 Type: G2938B

Assay Information:

Assay Origin Path: C:\Program Files\Agilent\2100 bioanalyzer\2100 expert\assays\dsDNA\High Sensitivity DNA.xsy
Assay Class: High Sensitivity DNA Assay
Version: 1.03
Assay Comments: Copyright © 2003-2010 Agilent Technologies

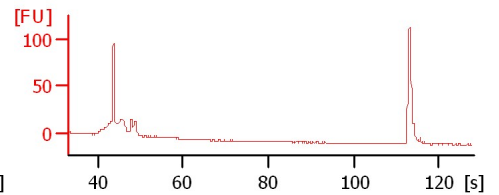
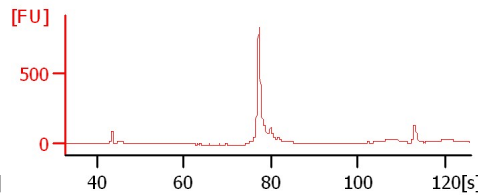
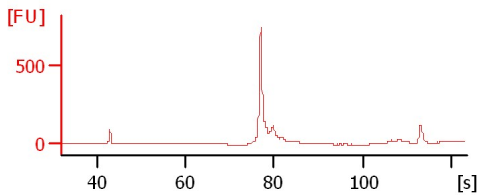
Chip Information:

Chip Lot #:
Reagent Kit Lot #:
Chip Comments:

Dong-2-Endo-1

Dong-2-Endo-2

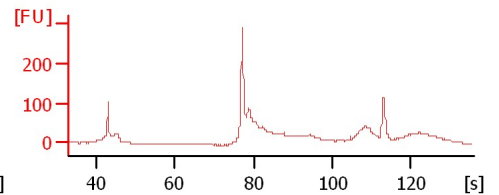
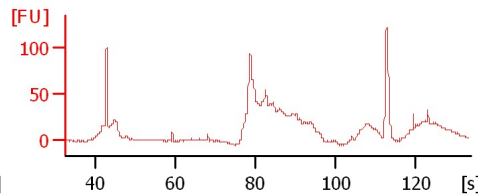
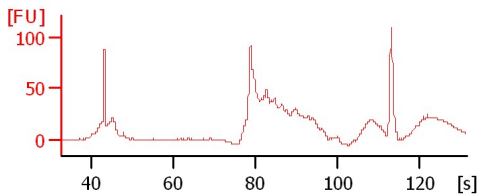
IR50-2-1mm



IR50-2-BF-1

IR50-2-BF-2

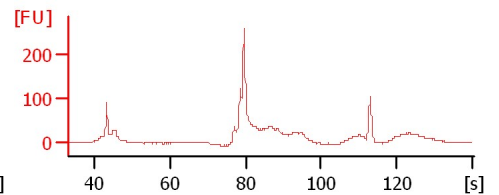
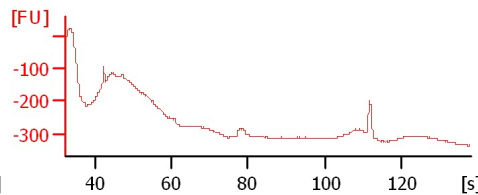
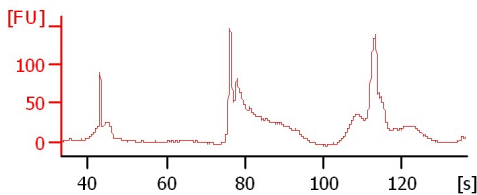
IR50-2-Endo-1



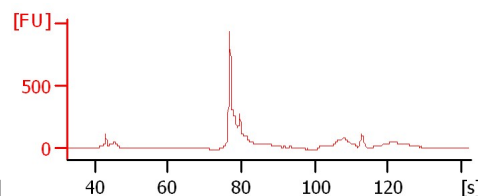
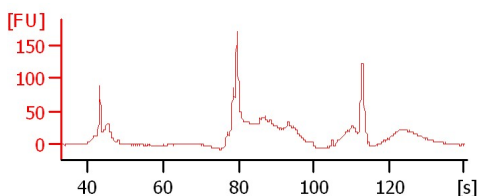
IR50-2-Endo-2

Kit-2-1mm

Kit-2-BF-1



Kit-2-BF-2



Assay Class: High Sensitivity DNA Assay
Data Path: C:\...ents and Settings\Bioanalyzer\2012-08-28\2012-08-28_004.xad

Created: 8/28/2012 11:52:38 AM
Modified: 8/28/2012 12:41:01 PM

Electrophoresis File Run Summary (Chip Summary)

Sample Name	Sample Comment	Rest. Digest	Status	Observation	Result Label	Result Color
Dong-2-Endo-1		<input type="checkbox"/>	✓			
Dong-2-Endo-2		<input type="checkbox"/>	✓			
IR50-2-1mm		<input type="checkbox"/>	✓			
IR50-2-BF-1		<input type="checkbox"/>	✓			
IR50-2-BF-2		<input type="checkbox"/>	✓			
IR50-2-Endo-1		<input type="checkbox"/>	✓			
IR50-2-Endo-2		<input type="checkbox"/>	✓			
Kit-2-1mm		<input type="checkbox"/>	✓			
Kit-2-BF-1		<input type="checkbox"/>	✓			
Kit-2-BF-2		<input type="checkbox"/>	✓			
Ladder		<input type="checkbox"/>	✓			

Chip Lot #

Reagent Kit Lot #

Chip Comments :

Assay Class: High Sensitivity DNA Assay
Data Path: C:\...ents and Settings\Bioanalyzer\2012-08-28\2012-08-28_004.xad

Created: 8/28/2012 11:52:38 AM
Modified: 8/28/2012 12:41:01 PM

Electrophoresis Assay Details

General Analysis Settings

Number of Available Sample and Ladder Wells (Max.) : 12
Minimum Visible Range [s] : 32
Maximum Visible Range [s] : 138
Start Analysis Time Range [s] : 33
End Analysis Time Range [s] : 137.5
Ladder Concentration [pg/μl] : 1950
Uses Standard Area for Ladder Fragments
Lower Marker Concentration [pg/μl] : 125
Upper Marker Concentration [pg/μl] : 75
Used Upper Marker for Quantitation
Standard Curve Fit is Point to Point
Show Data Aligned to Lower and Upper Marker

Integrator Settings

Integration Start Time [s] : 33.05
Integration End Time [s] : 137
Slope Threshold : 0.8
Height Threshold [FU] : 5
Area Threshold : 0.1
Width Threshold [s] : 0.6
Baseline Plateau [s] : 0.5

Filter Settings

Filter Width [s] : 0.5
Polynomial Order : 4

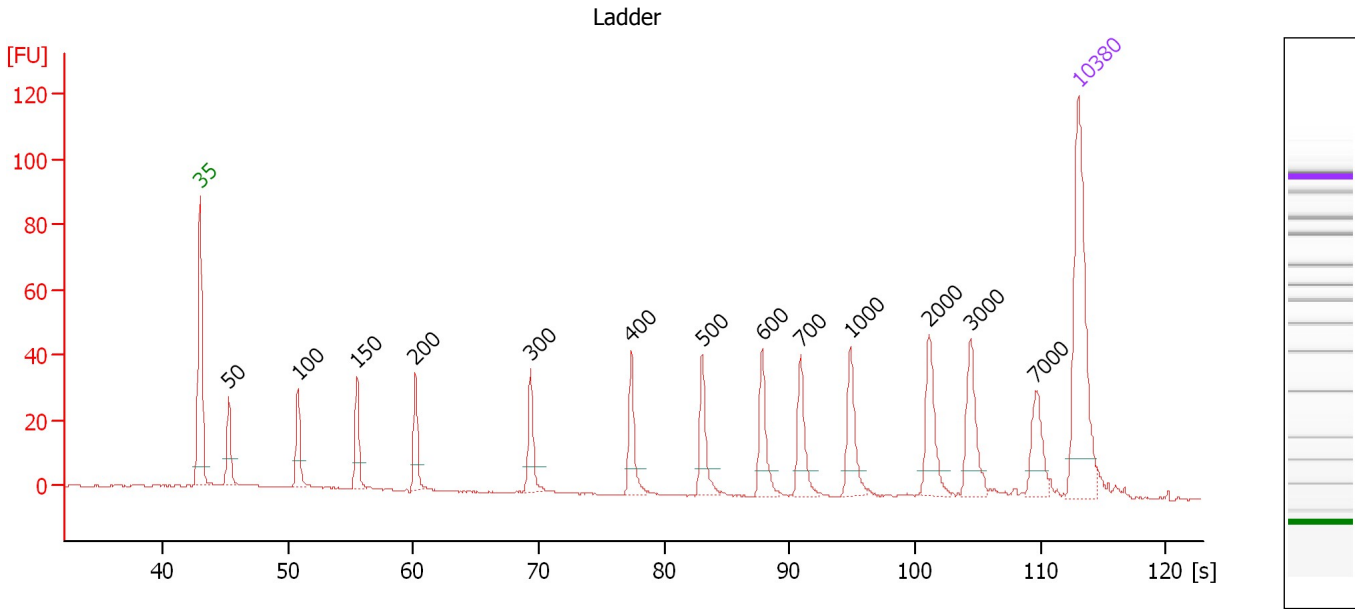
Ladder

Ladder Peak	Size	Area
1	35	160
2	50	210
3	100	208
4	150	221
5	200	242
6	300	270
7	400	305
8	500	306
9	600	336
10	700	321
11	1000	366
12	2000	413
13	3000	411
14	7000	400
15	10380	214

Assay Class: High Sensitivity DNA Assay
 Data Path: C:\...ents and Settings\Bioanalyzer\2012-08-28\2012-08-28_004.xad

Created: 8/28/2012 11:52:38 AM
 Modified: 8/28/2012 12:41:01 PM

Electropherogram Summary



Overall Results for Ladder

Noise: 0.1

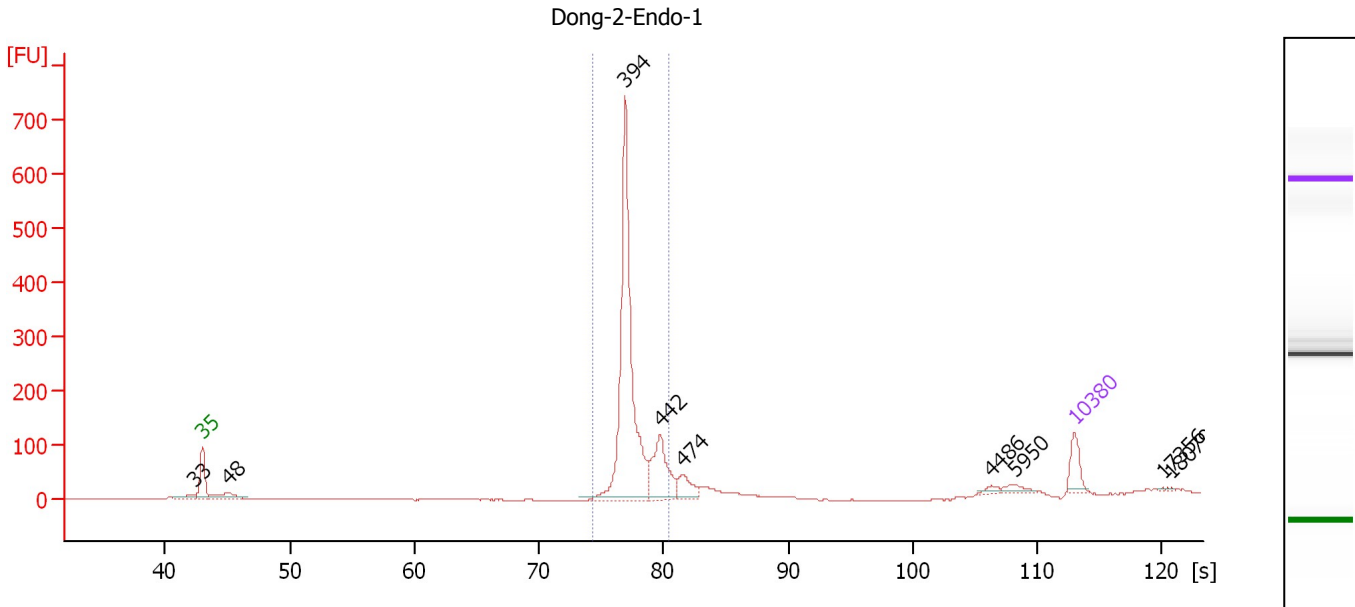
Peak table for Ladder

Peak	Size [bp]	Conc. [pg/µl]	Molarity [pmol/l]	Observations
1	35	125.00	5,411.3	Lower Marker
2	50	150.00	4,545.5	Ladder Peak
3	100	150.00	2,272.7	Ladder Peak
4	150	150.00	1,515.2	Ladder Peak
5	200	150.00	1,136.4	Ladder Peak
6	300	150.00	757.6	Ladder Peak
7	400	150.00	568.2	Ladder Peak
8	500	150.00	454.5	Ladder Peak
9	600	150.00	378.8	Ladder Peak
10	700	150.00	324.7	Ladder Peak
11	1,000	150.00	227.3	Ladder Peak
12	2,000	150.00	113.6	Ladder Peak
13	3,000	150.00	75.8	Ladder Peak
14	7,000	150.00	32.5	Ladder Peak
15	10,380	75.00	10.9	Upper Marker

Assay Class: High Sensitivity DNA Assay
 Data Path: C:\...ents and Settings\Bioanalyzer\2012-08-28\2012-08-28_004.xad

Created: 8/28/2012 11:52:38 AM
 Modified: 8/28/2012 12:41:01 PM

Electropherogram Summary Continued ...



Overall Results for sample 1 : Dong-2-Endo-1

Number of peaks found: 9 Corr. Area 1: 1,102.4
 Noise: 0.1

Peak table for sample 1 : Dong-2-Endo-1

Peak	Size [bp]	Conc. [pg/μl]	Molarity [pmol/l]	Observations
1	33	0.00	0.0	
2	35	125.00	5,411.3	Lower Marker
3	48	100.71	3,153.2	
4	394	1,222.11	4,695.8	
5	442	276.05	945.7	
6	474	92.79	296.9	
7	4,486	16.64	5.6	
8	5,950	28.83	7.3	
9	10,380	75.00	10.9	Upper Marker
10	17,356	0.00	0.0	
11	18,079	0.00	0.0	

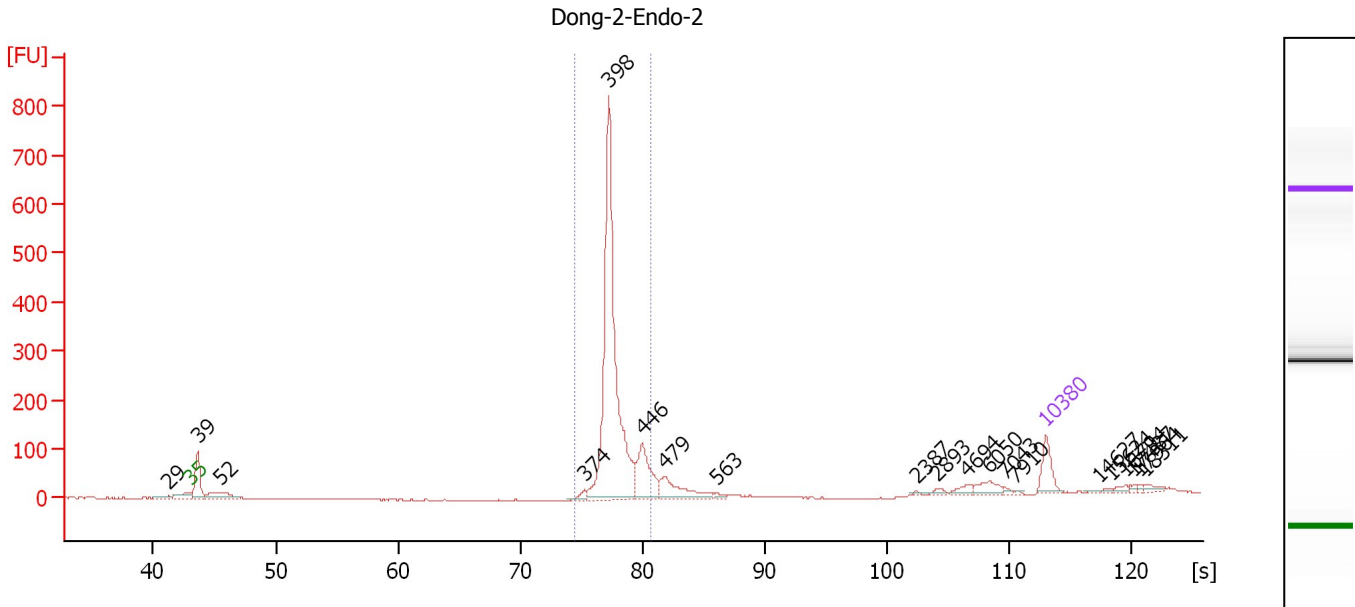
Region table for sample 1 : Dong-2-Endo-1

From [bp]	To [bp]	Average Size [bp]	Molarity [pmol/l]	Conc. [pg/μl]	Corr. Area	% of Total	Size distribution in CV [%]	Color
362	455	404	5,115.7	1,362.03	1,102.4	80	4.4	Blue

Assay Class: High Sensitivity DNA Assay
 Data Path: C:\...ents and Settings\Bioanalyzer\2012-08-28\2012-08-28_004.xad

Created: 8/28/2012 11:52:38 AM
 Modified: 8/28/2012 12:41:01 PM

Electropherogram Summary Continued ...



Overall Results for sample 2 : Dong-2-Endo-2

Number of peaks found: 20 Corr. Area 1: 1,251.3
 Noise: 0.6

Peak table for sample 2 : Dong-2-Endo-2

Peak	Size [bp]	Conc. [pg/μl]	Molarity [pmol/l]	Observations
1	29	0.00	0.0	
2	35	125.00	5,411.3	Lower Marker
3	39	194.52	7,544.7	
4	52	111.25	3,259.1	
5	374	23.10	93.6	
6	398	1,307.24	4,971.1	
7	446	216.06	734.1	
8	479	139.96	443.1	
9	563	9.93	26.7	
10	2,387	4.47	2.8	
11	2,893	12.12	6.3	
12	4,694	24.09	7.8	
13	6,050	40.28	10.1	
14	7,043	7.71	1.7	
15	7,910	3.01	0.6	
16	10,380	75.00	10.9	Upper Marker
17	14,627	0.00	0.0	
18	15,624	0.00	0.0	
19	16,794	0.00	0.0	
20	17,487	0.00	0.0	
21	17,964	0.00	0.0	
22	18,311	0.00	0.0	

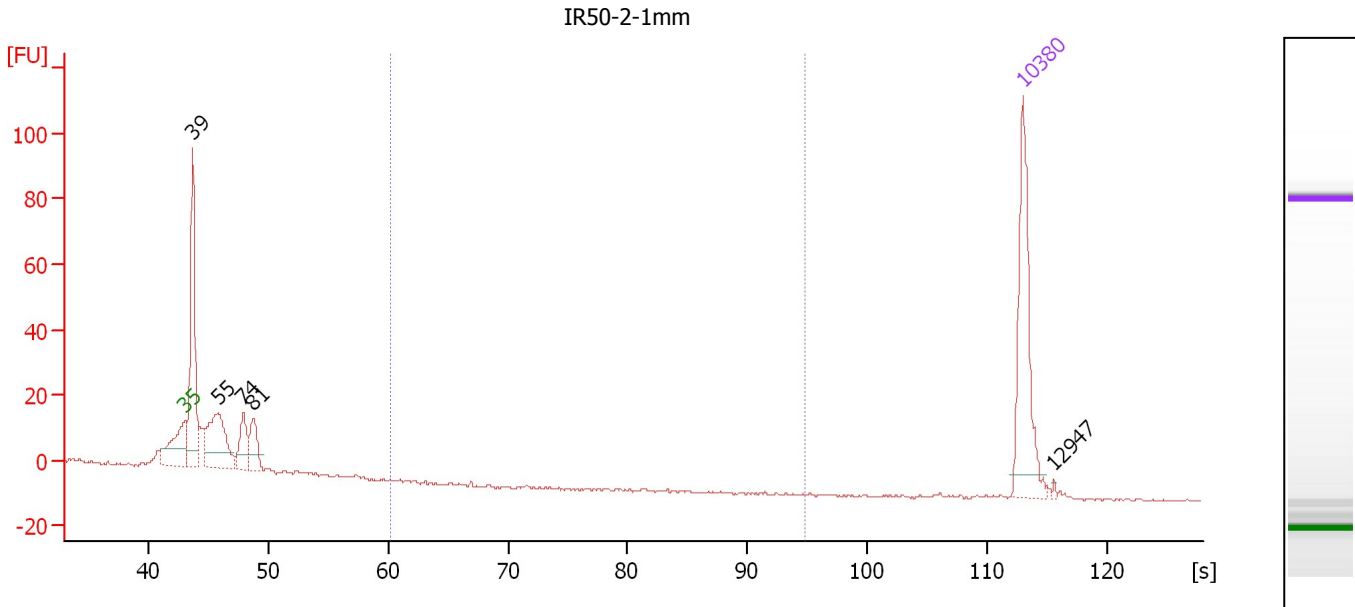
Region table for sample 2 : Dong-2-Endo-2

From [bp]	To [bp]	Average Size [bp]	Molarity [pmol/l]	Conc. [pg/μl]	Corr. Area	% of Total	Size distribution in CV [%]	Color
363	459	407	5,202.3	1,396.56	1,251.3	75	4.2	Blue

Assay Class: High Sensitivity DNA Assay
 Data Path: C:\...ents and Settings\Bioanalyzer\2012-08-28\2012-08-28_004.xad

Created: 8/28/2012 11:52:38 AM
 Modified: 8/28/2012 12:41:01 PM

Electropherogram Summary Continued ...



Overall Results for sample 3 : IR50-2-1mm

Number of peaks found: 5 Corr. Area 1: 0.0
 Noise: 0.3

Peak table for sample 3 : IR50-2-1mm

Peak	Size [bp]	Conc. [pg/μl]	Molarity [pmol/l]	Observations
1	35	125.00	5,411.3	Lower Marker
2	39	163.28	6,271.5	
3	55	99.46	2,758.7	
4	74	38.59	793.2	
5	81	35.88	667.8	
6	10,380	75.00	10.9	Upper Marker
7	12,947	0.00	0.0	

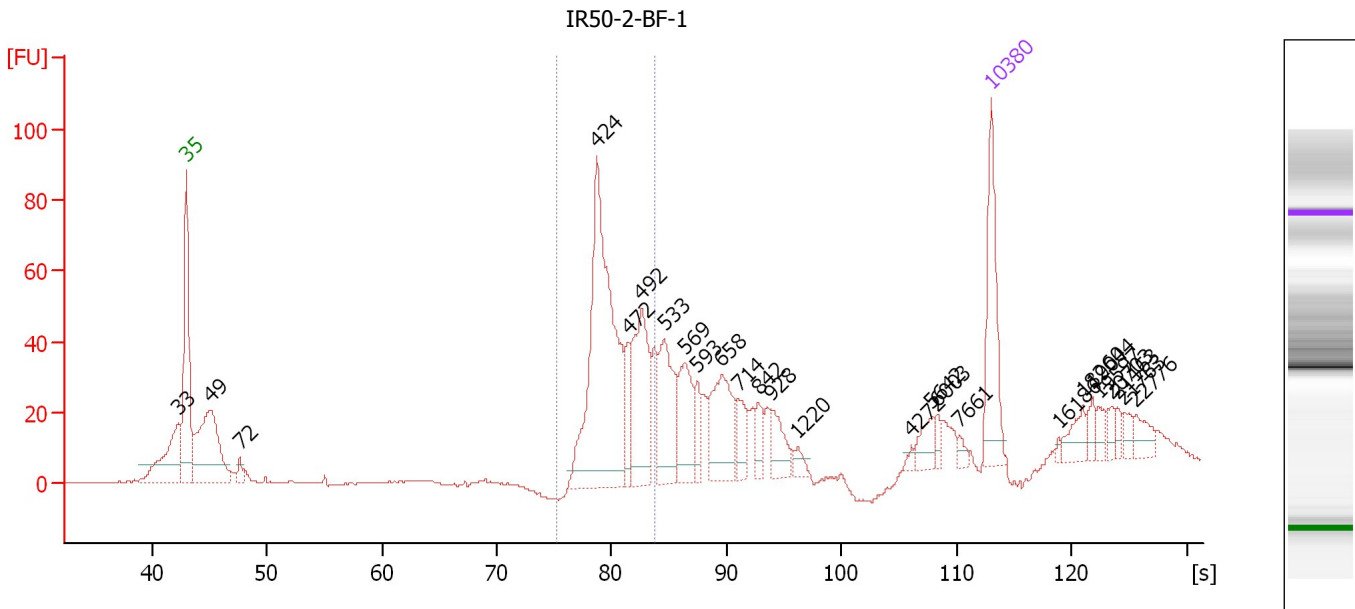
Region table for sample 3 : IR50-2-1mm

From [bp]	To [bp]	Average Size [bp]	Molarity [pmol/l]	Conc. [pg/μl]	Corr. Area	% of Total	Size distribution in CV [%]	Color
200	1,000	0	0.0	0.00	0.0	0	0.0	Blue

Assay Class: High Sensitivity DNA Assay
 Data Path: C:\...ents and Settings\Bioanalyzer\2012-08-28\2012-08-28_004.xad

Created: 8/28/2012 11:52:38 AM
 Modified: 8/28/2012 12:41:01 PM

Electropherogram Summary Continued ...



Overall Results for sample 4 : IR50-2-BF-1

Number of peaks found: 26 Corr. Area 1: 360.1
 Noise: 0.2

Peak table for sample 4 : IR50-2-BF-1

Peak	Size [bp]	Conc. [pg/μl]	Molarity [pmol/l]	Observations
1	33	0.00	0.0	
2	35	125.00	5,411.3	Lower Marker
3	49	190.77	5,912.1	
4	72	11.70	247.1	
5	424	335.89	1,200.9	
6	472	38.94	125.1	
7	492	121.21	373.0	
8	533	89.78	255.1	
9	569	65.93	175.7	
10	593	22.25	56.8	
11	658	85.78	197.6	
12	714	25.99	55.1	
13	842	19.03	34.2	
14	928	31.05	50.7	
15	1,220	9.63	12.0	
16	4,272	4.07	1.4	
17	5,642	18.44	5.0	
18	6,003	8.09	2.0	
19	7,661	5.95	1.2	
20	10,380	75.00	10.9	Upper Marker
21	16,186	0.00	0.0	
22	18,260	0.00	0.0	
23	19,044	0.00	0.0	
24	19,597	0.00	0.0	
25	20,703	0.00	0.0	
26	21,163	0.00	0.0	


Assay Class: High Sensitivity DNA Assay
Data Path: C:\...ents and Settings\Bioanalyzer\2012-08-28\2012-08-28_004.xad

Created: 8/28/2012 11:52:38 AM
Modified: 8/28/2012 12:41:01 PM

Electropherogram Summary Continued ...**... Peak table for sample 4 : IR50-2-BF-1**

Peak	Size [bp]	Conc. [pg/ μ l]	Molarity [pmol/l]	Observations
27	21,763	0.00	0.0	
28	22,776	0.00	0.0	

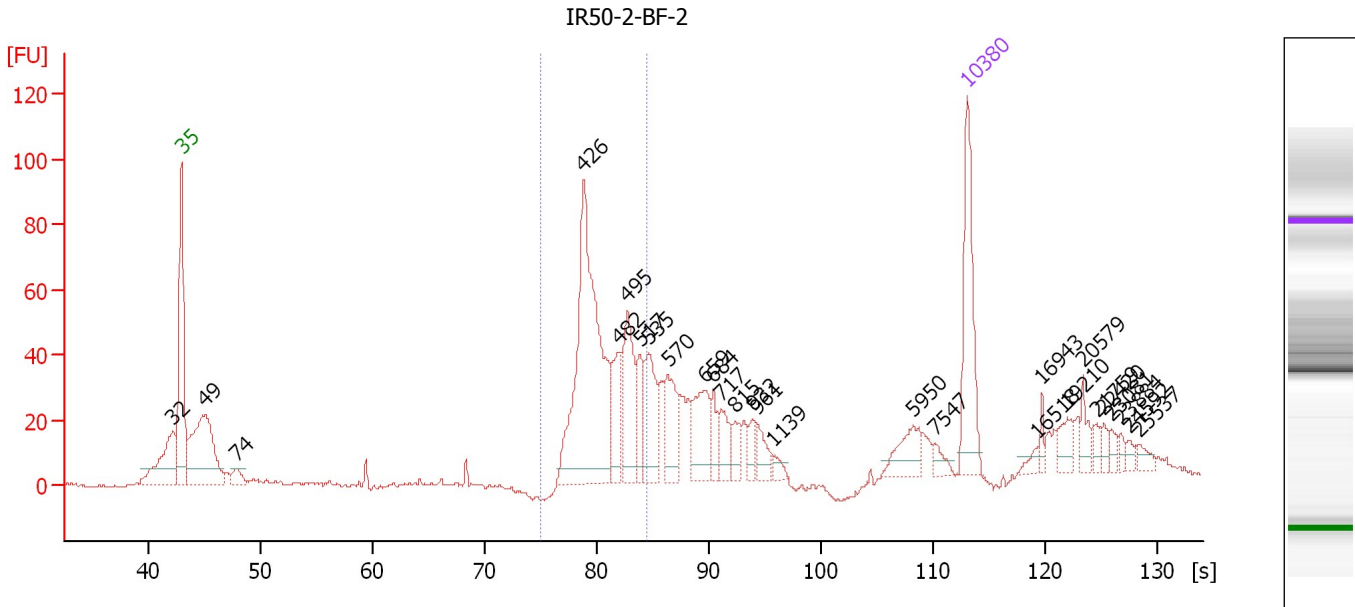
Region table for sample 4 : IR50-2-BF-1

From [bp]	To [bp]	Average Size [bp]	Molarity [pmol/l]	Conc. [pg/ μ l]	Corr. Area	% of Total	Size distribution in CV [%]	Color
372	515	452	1,530.0	455.71	360.1	36	6.9	

Assay Class: High Sensitivity DNA Assay
 Data Path: C:\...ents and Settings\Bioanalyzer\2012-08-28\2012-08-28_004.xad

Created: 8/28/2012 11:52:38 AM
 Modified: 8/28/2012 12:41:01 PM

Electropherogram Summary Continued ...



Overall Results for sample 5 : IR50-2-BF-2

Number of peaks found: 28 Corr. Area 1: 412.4
 Noise: 0.7

Peak table for sample 5 : IR50-2-BF-2

Peak	Size [bp]	Conc. [pg/μl]	Molarity [pmol/l]	Observations
1	32	0.00	0.0	
2	35	125.00	5,411.3	Lower Marker
3	49	174.48	5,439.5	
4	74	15.82	323.6	
5	426	288.63	1,027.1	
6	482	45.41	142.8	
7	495	76.85	235.1	
8	517	33.13	97.0	
9	535	58.61	166.1	
10	570	47.13	125.3	
11	659	51.44	118.3	
12	684	18.95	42.0	
13	717	28.39	60.0	
14	815	14.62	27.2	
15	932	12.88	20.9	
16	961	16.90	26.7	
17	1,139	7.04	9.4	
18	5,950	27.87	7.1	
19	7,547	7.91	1.6	
20	10,380	75.00	10.9	Upper Marker
21	16,518	0.00	0.0	
22	16,943	0.00	0.0	
23	19,210	0.00	0.0	
24	20,579	0.00	0.0	
25	21,759	0.00	0.0	
26	22,420	0.00	0.0	

Assay Class: High Sensitivity DNA Assay
Data Path: C:\...ents and Settings\Bioanalyzer\2012-08-28\2012-08-28_004.xad

Created: 8/28/2012 11:52:38 AM
Modified: 8/28/2012 12:41:01 PM

Electropherogram Summary Continued ...**... Peak table for sample 5 : IR50-2-BF-2**

Peak	Size [bp]	Conc. [pg/ μ l]	Molarity [pmol/l]	Observations
27	23,081	0.00	0.0	
28	23,884	0.00	0.0	
29	24,592	0.00	0.0	
30	25,537	0.00	0.0	

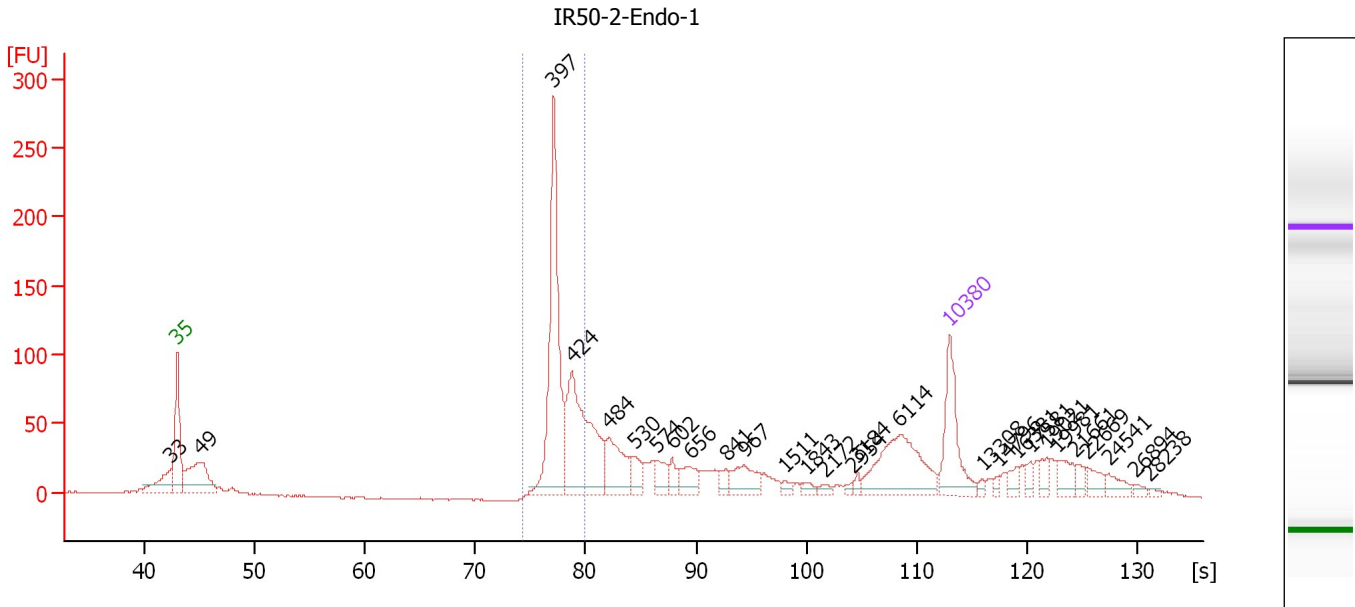
Region table for sample 5 : IR50-2-BF-2

From [bp]	To [bp]	Average Size [bp]	Molarity [pmol/l]	Conc. [pg/ μ l]	Corr. Area	% of Total	Size distribution in CV [%]	Color
371	531	459	1,480.5	446.43	412.4	38	7.9	

Assay Class: High Sensitivity DNA Assay
 Data Path: C:\...ents and Settings\Bioanalyzer\2012-08-28\2012-08-28_004.xad

Created: 8/28/2012 11:52:38 AM
 Modified: 8/28/2012 12:41:01 PM

Electropherogram Summary Continued ...



Overall Results for sample 6 : IR50-2-Endo-1

Number of peaks found: 28 Corr. Area 1: 513.9
 Noise: 0.6

Peak table for sample 6 : IR50-2-Endo-1

Peak	Size [bp]	Conc. [pg/μl]	Molarity [pmol/l]	Observations
1	33	0.00	0.0	
2	35	125.00	5,411.3	Lower Marker
3	49	126.77	3,933.8	
4	397	277.77	1,061.4	
5	424	219.04	782.1	
6	484	77.18	241.8	
7	530	26.85	76.8	
8	574	24.39	64.4	
9	602	15.69	39.5	
10	656	28.99	67.0	
11	841	12.09	21.8	
12	967	38.20	59.9	
13	1,511	6.71	6.7	
14	1,843	6.61	5.4	
15	2,172	6.01	4.2	
16	2,954	3.99	2.0	
17	3,184	5.10	2.4	
18	6,114	113.34	28.1	
19	10,380	75.00	10.9	Upper Marker
20	13,308	0.00	0.0	
21	14,796	0.00	0.0	
22	16,381	0.00	0.0	
23	17,581	0.00	0.0	
24	19,021	0.00	0.0	
25	19,981	0.00	0.0	
26	21,661	0.00	0.0	


Assay Class: High Sensitivity DNA Assay
Data Path: C:\...ents and Settings\Bioanalyzer\2012-08-28\2012-08-28_004.xad

Created: 8/28/2012 11:52:38 AM
Modified: 8/28/2012 12:41:01 PM

Electropherogram Summary Continued ...**... Peak table for sample 6 : IR50-2-Endo-1**

Peak	Size [bp]	Conc. [pg/ μ l]	Molarity [pmol/l]	Observations
27	22,669	0.00	0.0	
28	24,541	0.00	0.0	
29	26,894	0.00	0.0	
30	28,238	0.00	0.0	

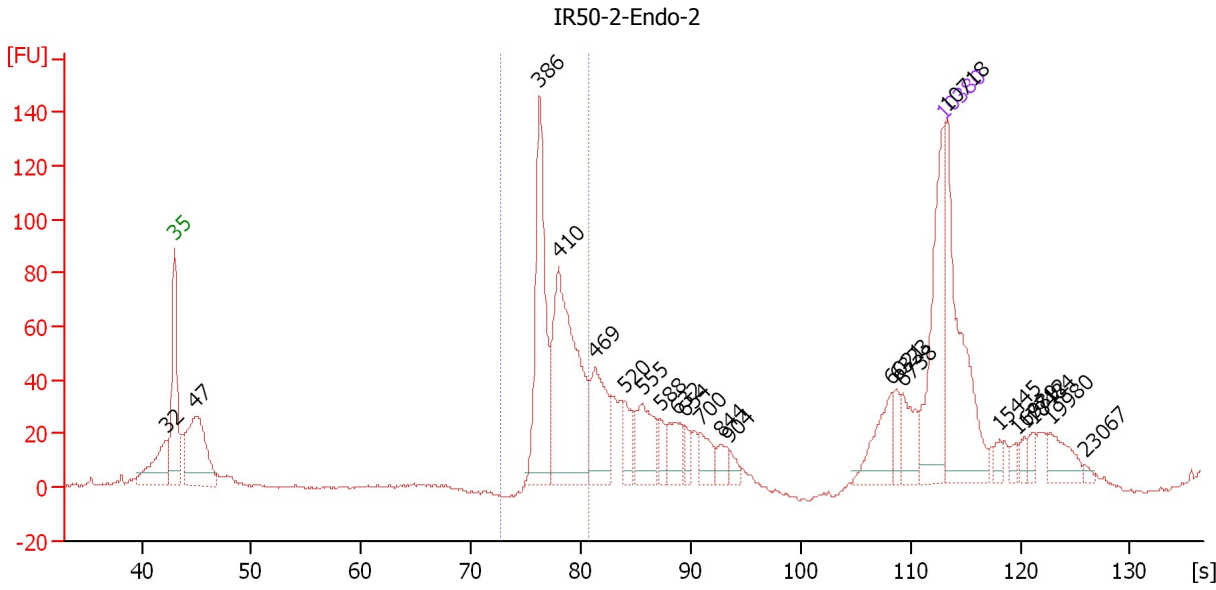
Region table for sample 6 : IR50-2-Endo-1

From [bp]	To [bp]	Average Size [bp]	Molarity [pmol/l]	Conc. [pg/ μ l]	Corr. Area	% of Total	Size distribution in CV [%]	Color
362	446	408	1,528.6	410.52	513.9	30	4.0	

Assay Class: High Sensitivity DNA Assay
 Data Path: C:\...ents and Settings\Bioanalyzer\2012-08-28\2012-08-28_004.xad

Created: 8/28/2012 11:52:38 AM
 Modified: 8/28/2012 12:41:01 PM

Electropherogram Summary Continued ...



Overall Results for sample 7 : IR50-2-Endo-2

Number of peaks found: 23 Corr. Area 1: 452.6
 Noise: 0.5

Peak table for sample 7 : IR50-2-Endo-2

Peak	Size [bp]	Conc. [pg/μl]	Molarity [pmol/l]	Observations
1	32	0.00	0.0	
2	35	125.00	5,411.3	Lower Marker
3	47	120.63	3,892.4	
4	386	137.08	538.3	
5	410	178.78	660.5	
6	469	62.00	200.3	
7	520	22.75	66.3	
8	555	44.43	121.4	
9	588	10.72	27.7	
10	632	24.44	58.6	
11	654	10.11	23.4	
12	700	18.27	39.6	
13	844	10.53	18.9	
14	904	6.35	10.7	
15	6,021	31.20	7.9	
16	6,323	10.41	2.5	
17	6,738	21.74	4.9	
18	10,380	75.00	10.9	Upper Marker
19	10,718	0.00	0.0	
20	15,445	0.00	0.0	
21	16,989	0.00	0.0	
22	17,712	0.00	0.0	
23	18,484	0.00	0.0	
24	19,980	0.00	0.0	
25	23,067	0.00	0.0	

Assay Class: High Sensitivity DNA Assay
Data Path: C:\...ents and Settings\Bioanalyzer\2012-08-28\2012-08-28_004.xad

Created: 8/28/2012 11:52:38 AM
Modified: 8/28/2012 12:41:01 PM

Electropherogram Summary Continued ...

... Region table for sample 7 : IR50-2-Endo-2

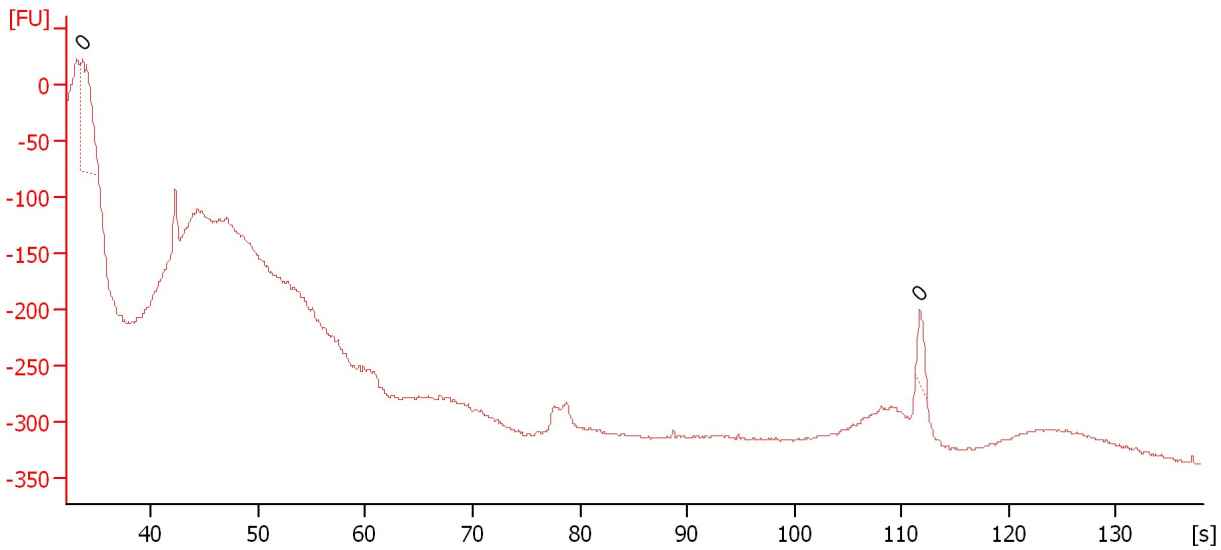
From [bp]	To [bp]	Average Size [bp]	Molarity [pmol/l]	Conc. [pg/μl]	Corr. Area	% of Total	Size distribution in CV [%]	Color
343	459	409	1,133.6	304.78	452.6	31	5.6	■

Assay Class: High Sensitivity DNA Assay
Data Path: C:\...ents and Settings\Bioanalyzer\2012-08-28\2012-08-28_004.xad

Created: 8/28/2012 11:52:38 AM
Modified: 8/28/2012 12:41:01 PM

Electropherogram Summary Continued ...

Kit-2-1mm



Overall Results for sample 8 : Kit-2-1mm

Number of peaks found: 0 Noise: 1.1

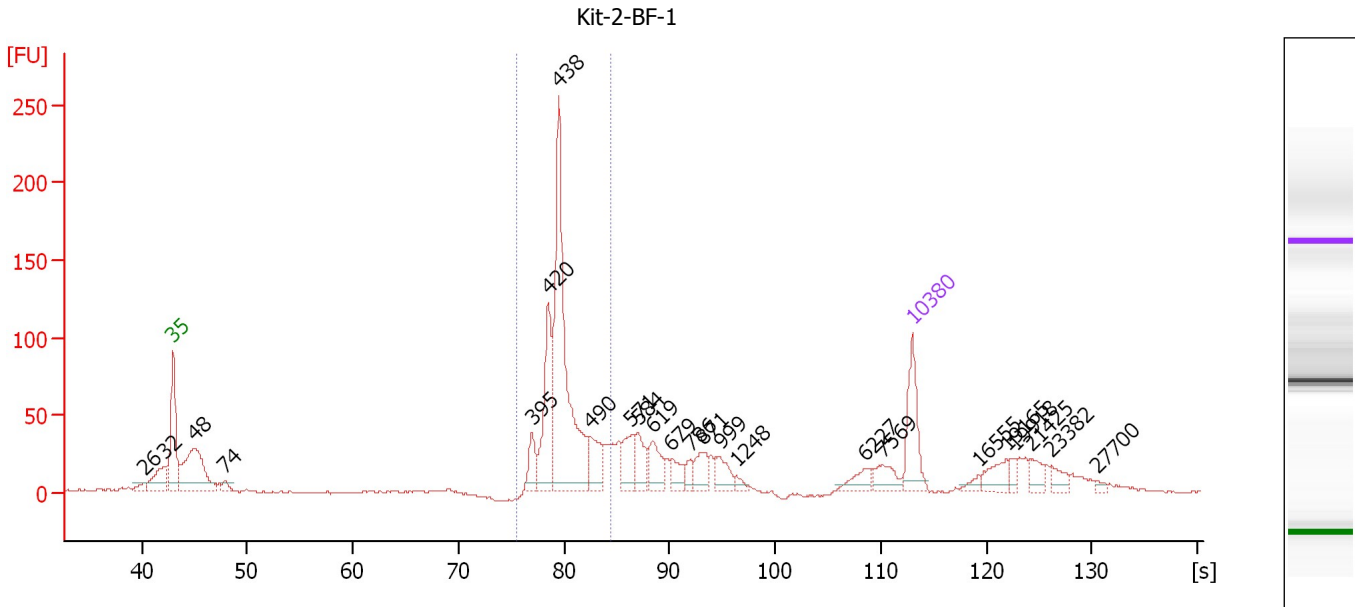
Peak table for sample 8 : Kit-2-1mm

Peak	Size [bp]	Conc. [pg/µl]	Molarity [pmol/l]	Observations
1	0	0.00	0.0	
2	0	0.00	0.0	

Assay Class: High Sensitivity DNA Assay
 Data Path: C:\...ents and Settings\Bioanalyzer\2012-08-28\2012-08-28_004.xad

Created: 8/28/2012 11:52:38 AM
 Modified: 8/28/2012 12:41:01 PM

Electropherogram Summary Continued ...



Overall Results for sample 9 : Kit-2-BF-1

Number of peaks found: 24 Corr. Area 1: 630.9
 Noise: 0.6

Peak table for sample 9 : Kit-2-BF-1

Peak	Size [bp]	Conc. [pg/μl]	Molarity [pmol/l]	Observations
1	26	0.00	0.0	
2	32	0.00	0.0	
3	35	125.00	5,411.3	Lower Marker
4	48	229.25	7,219.1	
5	74	16.58	340.9	
6	395	41.89	160.6	
7	420	150.94	544.5	
8	438	435.84	1,507.7	
9	490	62.69	193.8	
10	571	55.14	146.4	
11	584	49.30	128.0	
12	619	51.08	125.0	
13	679	29.70	66.3	
14	786	15.73	30.3	
15	871	37.81	65.8	
16	999	33.66	51.1	
17	1,248	9.65	11.7	
18	6,227	24.79	6.0	
19	7,569	31.45	6.3	
20	10,380	75.00	10.9	Upper Marker
21	16,555	0.00	0.0	
22	19,165	0.00	0.0	
23	19,918	0.00	0.0	
24	21,425	0.00	0.0	
25	23,382	0.00	0.0	
26	27,700	0.00	0.0	

Assay Class: High Sensitivity DNA Assay
Data Path: C:\...ents and Settings\Bioanalyzer\2012-08-28\2012-08-28_004.xad

Created: 8/28/2012 11:52:38 AM
Modified: 8/28/2012 12:41:01 PM

Electropherogram Summary Continued ...

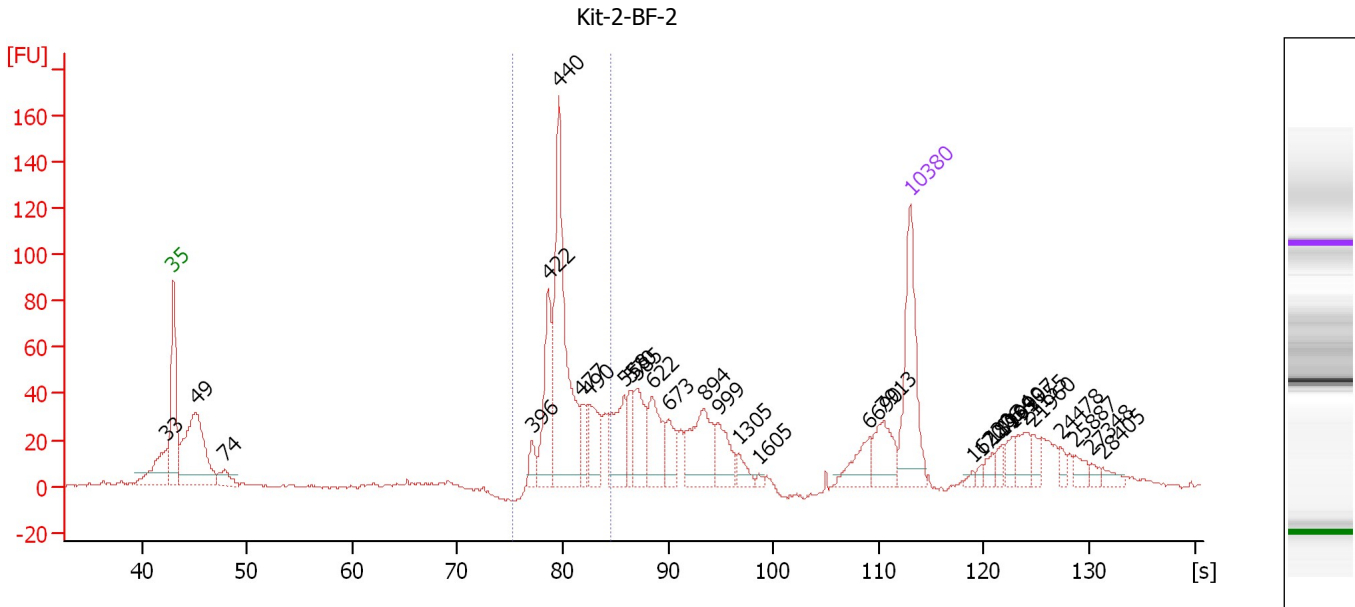
... Region table for sample 9 : Kit-2-BF-1

From [bp]	To [bp]	Average Size [bp]	Molarity [pmol/l]	Conc. [pg/μl]	Corr. Area	% of Total	Size distribution in CV [%]	Color
376	530	446	2,468.9	724.34	630.9	43	7.0	■

Assay Class: High Sensitivity DNA Assay
 Data Path: C:\...ents and Settings\Bioanalyzer\2012-08-28\2012-08-28_004.xad

Created: 8/28/2012 11:52:38 AM
 Modified: 8/28/2012 12:41:01 PM

Electropherogram Summary Continued ...



Overall Results for sample 10 : Kit-2-BF-2

Number of peaks found: 30 Corr. Area 1: 473.3
 Noise: 0.6

Peak table for sample 10 : Kit-2-BF-2

Peak	Size [bp]	Conc. [pg/μl]	Molarity [pmol/l]	Observations
1	33	0.00	0.0	
2	35	125.00	5,411.3	Lower Marker
3	49	182.48	5,623.6	
4	74	21.24	436.1	
5	396	14.04	53.7	
6	422	74.55	267.8	
7	440	199.87	688.5	
8	477	22.84	72.6	
9	490	41.23	127.6	
10	558	49.90	135.4	
11	570	23.29	61.9	
12	585	43.48	112.6	
13	622	43.73	106.5	
14	673	26.02	58.6	
15	894	59.21	100.4	
16	999	29.23	44.3	
17	1,305	10.64	12.4	
18	1,605	2.19	2.1	
19	6,690	22.23	5.0	
20	7,913	31.88	6.1	
21	10,380	75.00	10.9	Upper Marker
22	16,220	0.00	0.0	
23	17,076	0.00	0.0	
24	18,134	0.00	0.0	
25	19,090	0.00	0.0	
26	19,997	0.00	0.0	


Assay Class: High Sensitivity DNA Assay
Data Path: C:\...ents and Settings\Bioanalyzer\2012-08-28\2012-08-28_004.xad

Created: 8/28/2012 11:52:38 AM
Modified: 8/28/2012 12:41:01 PM

Electropherogram Summary Continued ...**... Peak table for sample 10 : Kit-2-BF-2**

Peak	Size [bp]	Conc. [pg/ μ l]	Molarity [pmol/l]	Observations
27	21,155	0.00	0.0	
28	21,960	0.00	0.0	
29	24,478	0.00	0.0	
30	25,887	0.00	0.0	
31	27,348	0.00	0.0	
32	28,405	0.00	0.0	

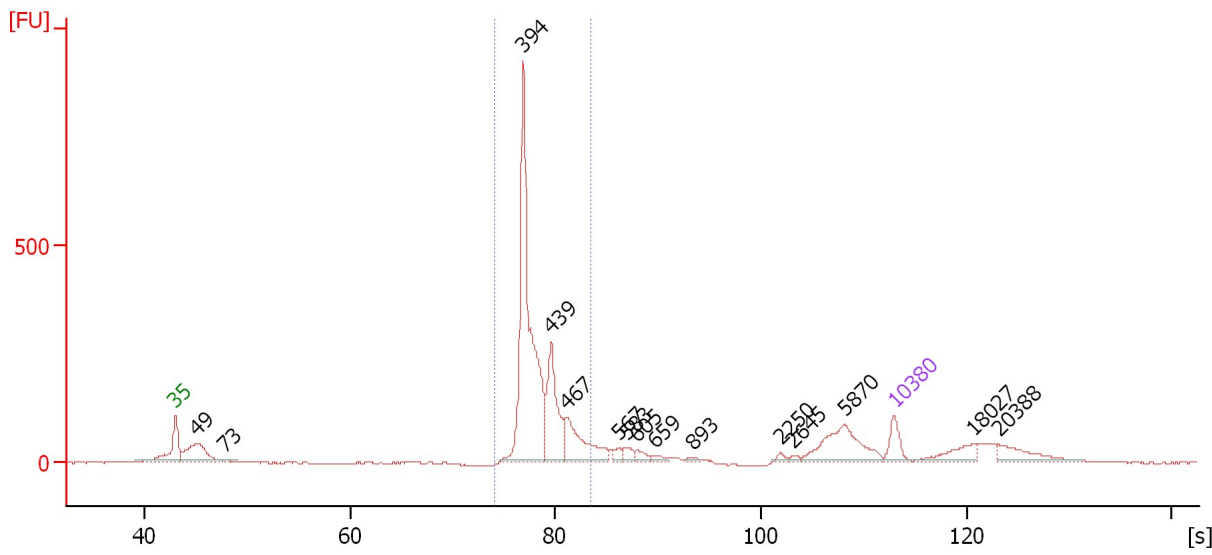
Region table for sample 10 : Kit-2-BF-2

From [bp]	To [bp]	Average Size [bp]	Molarity [pmol/l]	Conc. [pg/ μ l]	Corr. Area	% of Total	Size distribution in CV [%]	Color
373	532	454	1,272.2	379.22	473.3	33	7.3	

Assay Class: High Sensitivity DNA Assay
 Data Path: C:\...ents and Settings\Bioanalyzer\2012-08-28\2012-08-28_004.xad

Created: 8/28/2012 11:52:38 AM
 Modified: 8/28/2012 12:41:01 PM

Electropherogram Summary Continued ...



Overall Results for sample 11 :

Number of peaks found: 15 Corr. Area 1: 1,894.3
 Noise: 0.6

Peak table for sample 11 :

Peak	Size [bp]	Conc. [pg/μl]	Molarity [pmol/l]	Observations
1	35	125.00	5,411.3	Lower Marker
2	49	321.49	9,991.7	
3	73	25.70	531.6	
4	394	1,279.73	4,919.5	
5	439	367.83	1,270.7	
6	467	274.10	889.1	
7	567	27.24	72.8	
8	583	37.29	96.8	
9	605	35.86	89.8	
10	659	23.03	53.0	
11	893	13.47	22.9	
12	2,250	14.89	10.0	
13	2,645	12.06	6.9	
14	5,870	245.41	63.3	
15	10,380	75.00	10.9	Upper Marker
16	18,027	0.00	0.0	
17	20,388	0.00	0.0	

Region table for sample 11 :

From [bp]	To [bp]	Average Size [bp]	Molarity [pmol/l]	Conc. [pg/μl]	Corr. Area	% of Total	Size distribution in CV [%]	Color
360	507	418	6,655.7	1,829.63	1,894.3	61	7.1	Blue

Assay Class: High Sensitivity DNA Assay
Data Path: C:\...ents and Settings\Bioanalyzer\2012-08-28\2012-08-28_004.xad

Created: 8/28/2012 11:52:38 AM
Modified: 8/28/2012 12:41:01 PM

Gel Image

