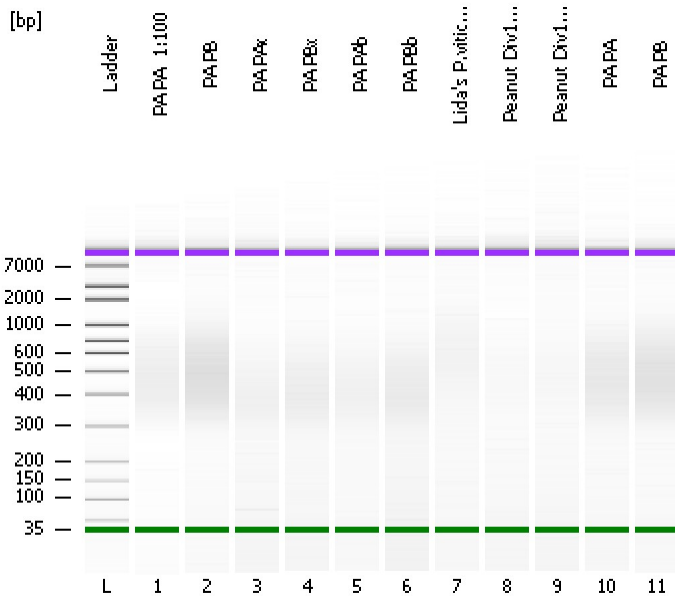


Assay Class: High Sensitivity DNA Assay
Data Path: C:\...s and Settings\Bioanalyzer\2012-08-28\2012-08-28_005_LF.xad

Created: 8/28/2012 2:30:07 PM
Modified: 8/28/2012 3:12:13 PM

Electrophoresis File Run Summary



Instrument Information:

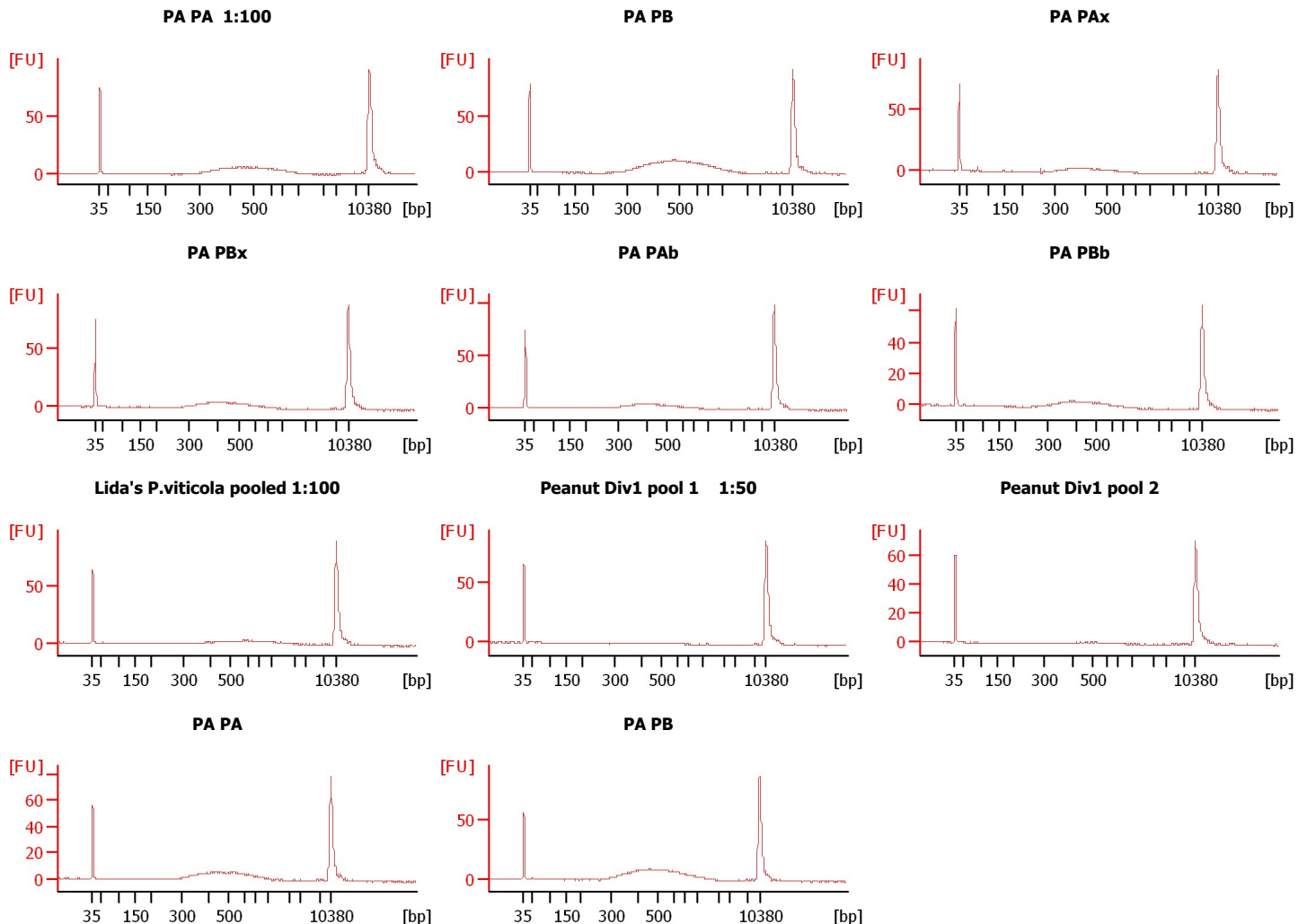
Instrument Name: DE13701086 Firmware: C.01.069
Serial#: DE13701086 Type: G2938B

Assay Information:

Assay Origin Path: C:\Program Files\Agilent\2100 bioanalyzer\2100 expert\assays\dsDNA\High Sensitivity DNA.xsy
Assay Class: High Sensitivity DNA Assay
Version: 1.03
Assay Comments: Copyright © 2003-2010 Agilent Technologies

Chip Information:

Chip Lot #:
Reagent Kit Lot #:
Chip Comments:



Assay Class: High Sensitivity DNA Assay
 Data Path: C:\...s and Settings\Bioanalyzer\2012-08-28\2012-08-28_005_LF.xad

Created: 8/28/2012 2:30:07 PM
 Modified: 8/28/2012 3:12:13 PM

Electrophoresis File Run Summary (Chip Summary)

| Sample Name | Sample Comment | Rest. Digest | Status | Observation | Result Label | Result Color |
|--------------------------------|----------------|--------------------------|--------|-------------|--------------|--------------|
| PA PA 1:100 | | <input type="checkbox"/> | ✓ | | | |
| PA PB | | <input type="checkbox"/> | ✓ | | | |
| PA PAx | | <input type="checkbox"/> | ✓ | | | |
| PA PBx | | <input type="checkbox"/> | ✓ | | | |
| PA PAb | | <input type="checkbox"/> | ✓ | | | |
| PA PBb | | <input type="checkbox"/> | ✓ | | | |
| Lida's P.viticola pooled 1:100 | | <input type="checkbox"/> | ✓ | | | |
| Peanut Div1 pool 1 1:50 | | <input type="checkbox"/> | ✓ | | | |
| Peanut Div1 pool 2 | | <input type="checkbox"/> | ✓ | | | |
| PA PA | | <input type="checkbox"/> | ✓ | | | |
| PA PB | | <input type="checkbox"/> | ✓ | | | |
| Ladder | | <input type="checkbox"/> | ✓ | | | |

Chip Lot #

Reagent Kit Lot #

Chip Comments :

Assay Class: High Sensitivity DNA Assay
Data Path: C:\...s and Settings\Bioanalyzer\2012-08-28\2012-08-28_005_LF.xad

Created: 8/28/2012 2:30:07 PM
Modified: 8/28/2012 3:12:13 PM

Electrophoresis Assay Details

General Analysis Settings

Number of Available Sample and Ladder Wells (Max.) : 12
Minimum Visible Range [s] : 32
Maximum Visible Range [s] : 138
Start Analysis Time Range [s] : 33
End Analysis Time Range [s] : 137.5
Ladder Concentration [pg/μl] : 1950
Uses Standard Area for Ladder Fragments
Lower Marker Concentration [pg/μl] : 125
Upper Marker Concentration [pg/μl] : 75
Used Upper Marker for Quantitation
Standard Curve Fit is Point to Point
Show Data Aligned to Lower and Upper Marker

Integrator Settings

Integration Start Time [s] : 33.05
Integration End Time [s] : 137
Slope Threshold : 0.8
Height Threshold [FU] : 5
Area Threshold : 0.1
Width Threshold [s] : 0.6
Baseline Plateau [s] : 0.5

Filter Settings

Filter Width [s] : 0.5
Polynomial Order : 4

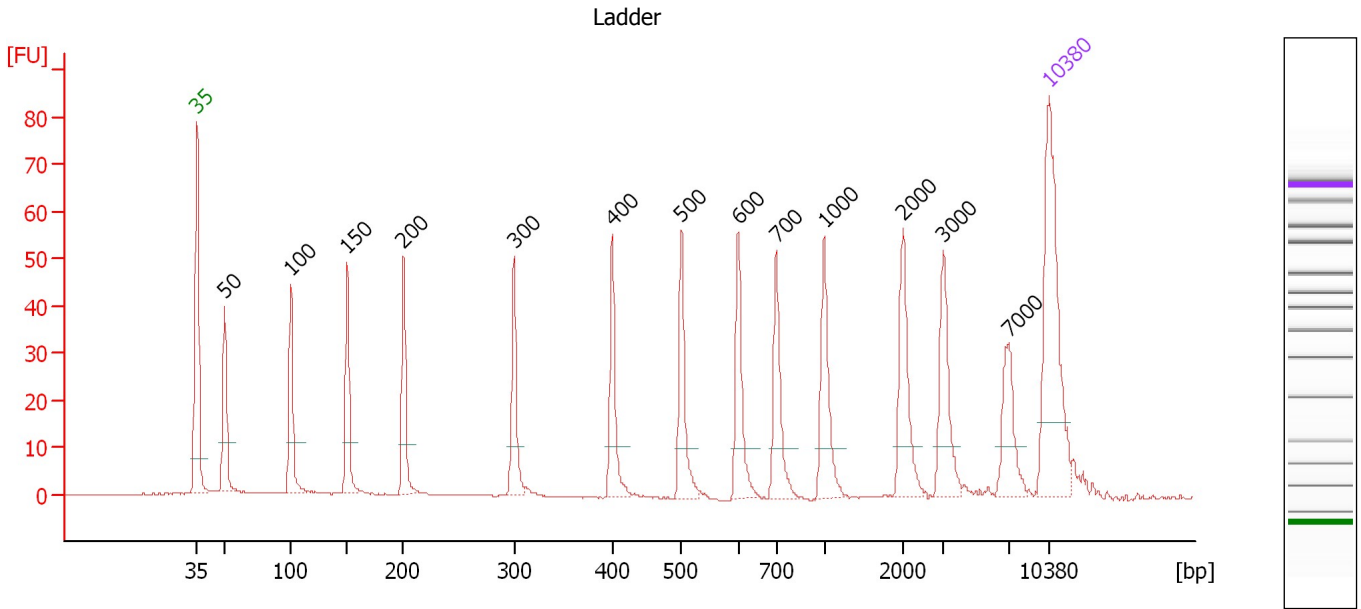
Ladder

| Ladder Peak | Size | Area |
|-------------|-------|------|
| 1 | 35 | 160 |
| 2 | 50 | 210 |
| 3 | 100 | 208 |
| 4 | 150 | 221 |
| 5 | 200 | 242 |
| 6 | 300 | 270 |
| 7 | 400 | 305 |
| 8 | 500 | 306 |
| 9 | 600 | 336 |
| 10 | 700 | 321 |
| 11 | 1000 | 366 |
| 12 | 2000 | 413 |
| 13 | 3000 | 411 |
| 14 | 7000 | 400 |
| 15 | 10380 | 214 |

Assay Class: High Sensitivity DNA Assay
 Data Path: C:\...s and Settings\Bioanalyzer\2012-08-28\2012-08-28_005_LF.xad

Created: 8/28/2012 2:30:07 PM
 Modified: 8/28/2012 3:12:13 PM

Electropherogram Summary



Overall Results for Ladder

Noise: 0.1

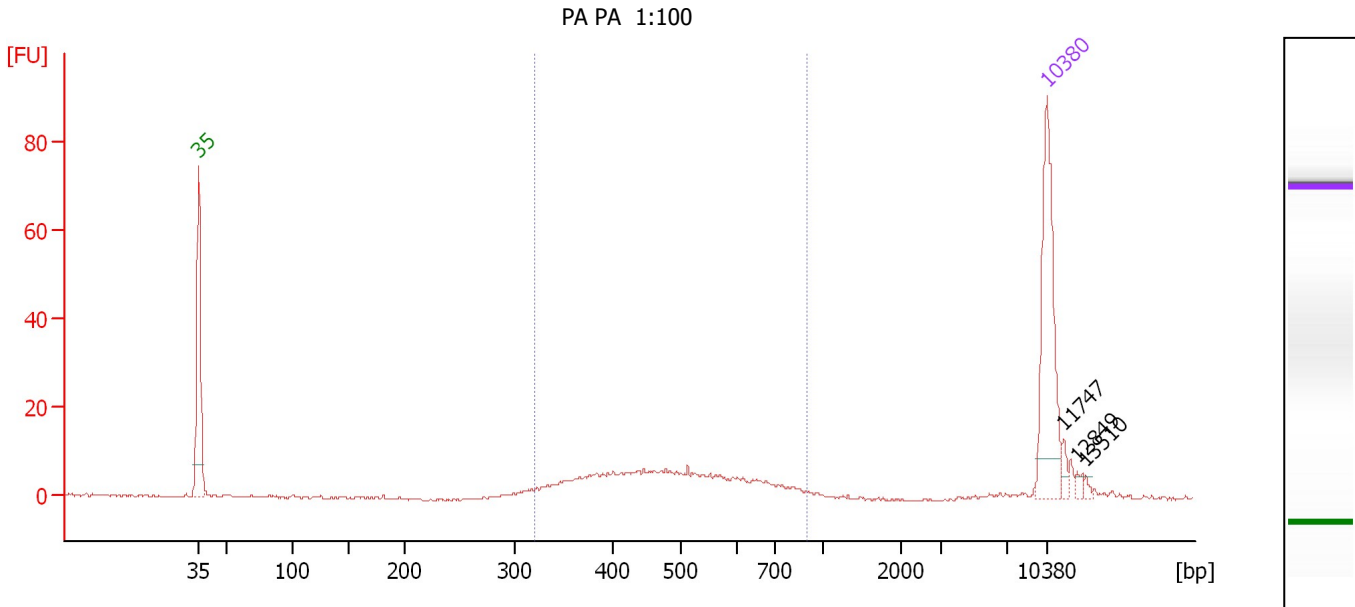
Peak table for Ladder

| Peak | Size [bp] | Conc. [pg/μl] | Molarity [pmol/l] | Observations |
|------|-----------|---------------|-------------------|--------------|
| 1 | 35 | 125.00 | 5,411.3 | Lower Marker |
| 2 | 50 | 150.00 | 4,545.5 | Ladder Peak |
| 3 | 100 | 150.00 | 2,272.7 | Ladder Peak |
| 4 | 150 | 150.00 | 1,515.2 | Ladder Peak |
| 5 | 200 | 150.00 | 1,136.4 | Ladder Peak |
| 6 | 300 | 150.00 | 757.6 | Ladder Peak |
| 7 | 400 | 150.00 | 568.2 | Ladder Peak |
| 8 | 500 | 150.00 | 454.5 | Ladder Peak |
| 9 | 600 | 150.00 | 378.8 | Ladder Peak |
| 10 | 700 | 150.00 | 324.7 | Ladder Peak |
| 11 | 1,000 | 150.00 | 227.3 | Ladder Peak |
| 12 | 2,000 | 150.00 | 113.6 | Ladder Peak |
| 13 | 3,000 | 150.00 | 75.8 | Ladder Peak |
| 14 | 7,000 | 150.00 | 32.5 | Ladder Peak |
| 15 | 10,380 | 75.00 | 10.9 | Upper Marker |

Assay Class: High Sensitivity DNA Assay
 Data Path: C:\...s and Settings\Bioanalyzer\2012-08-28\2012-08-28_005_LF.xad

Created: 8/28/2012 2:30:07 PM
 Modified: 8/28/2012 3:12:13 PM

Electropherogram Summary Continued ...



Overall Results for sample 1 : PA PA 1:100

Number of peaks found: 3 Corr. Area 1: 118.9
 Noise: 0.2

Peak table for sample 1 : PA PA 1:100

| Peak | Size [bp] | Conc. [pg/μl] | Molarity [pmol/l] | Observations |
|------|-----------|---------------|-------------------|--------------|
| 1 | 35 | 125.00 | 5,411.3 | Lower Marker |
| 2 | 10,380 | 75.00 | 10.9 | Upper Marker |
| 3 | 11,747 | 0.00 | 0.0 | |
| 4 | 12,849 | 0.00 | 0.0 | |
| 5 | 13,510 | 0.00 | 0.0 | |

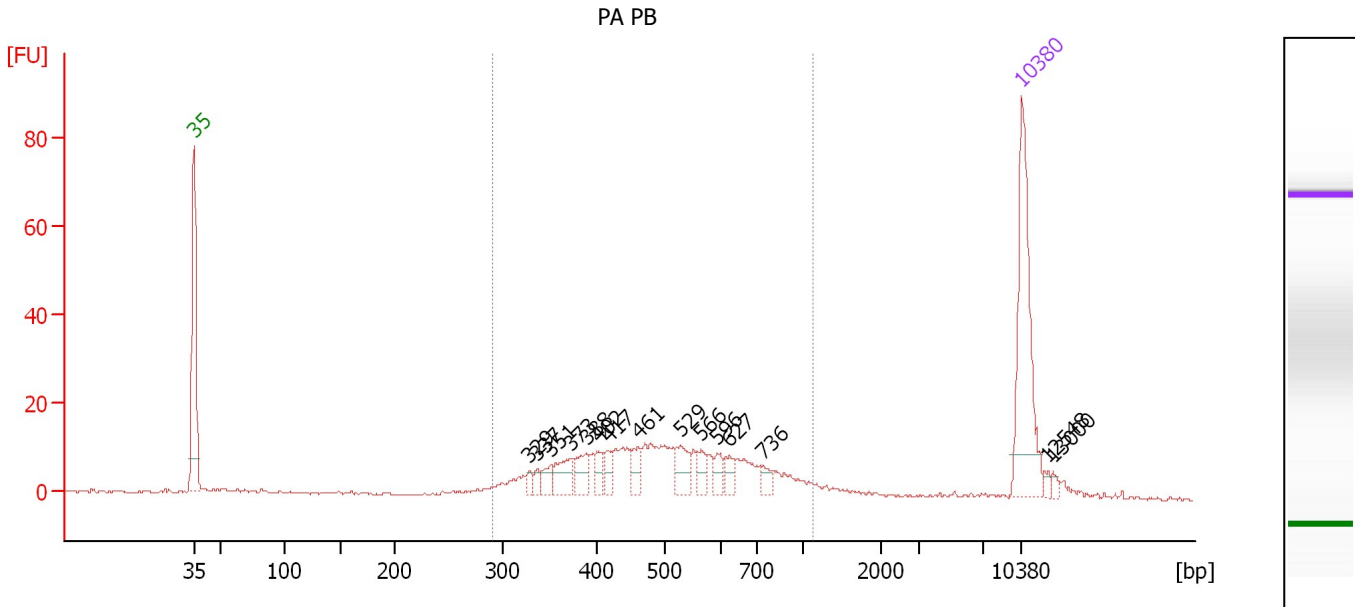
Region table for sample 1 : PA PA 1:100

| From [bp] | To [bp] | Average Size [bp] | Molarity [pmol/l] | Conc. [pg/μl] | Corr. Area | % of Total | Size distribution in CV [%] | Color |
|-----------|---------|-------------------|-------------------|---------------|------------|------------|-----------------------------|-------|
| 321 | 901 | 494 | 448.5 | 136.45 | 118.9 | 82 | 23.8 | Blue |

Assay Class: High Sensitivity DNA Assay
 Data Path: C:\...s and Settings\Bioanalyzer\2012-08-28\2012-08-28_005_LF.xad

Created: 8/28/2012 2:30:07 PM
 Modified: 8/28/2012 3:12:13 PM

Electropherogram Summary Continued ...



Overall Results for sample 2 : PA PB

Number of peaks found: 15 Corr. Area 1: 264.9
 Noise: 0.2

Peak table for sample 2 : PA PB

| Peak | Size [bp] | Conc. [pg/μl] | Molarity [pmol/l] | Observations |
|------|-----------|---------------|-------------------|--------------|
| 1 | 35 | 125.00 | 5,411.3 | Lower Marker |
| 2 | 329 | 5.10 | 23.5 | |
| 3 | 337 | 5.57 | 25.0 | |
| 4 | 351 | 10.10 | 43.6 | |
| 5 | 373 | 19.53 | 79.4 | |
| 6 | 388 | 15.98 | 62.4 | |
| 7 | 402 | 10.47 | 39.4 | |
| 8 | 417 | 9.96 | 36.2 | |
| 9 | 461 | 13.01 | 42.8 | |
| 10 | 529 | 18.90 | 54.1 | |
| 11 | 566 | 9.42 | 25.2 | |
| 12 | 596 | 8.83 | 22.5 | |
| 13 | 627 | 8.32 | 20.1 | |
| 14 | 736 | 7.70 | 15.8 | |
| 15 | 10,380 | 75.00 | 10.9 | Upper Marker |
| 16 | 12,548 | 0.00 | 0.0 | |
| 17 | 13,000 | 0.00 | 0.0 | |

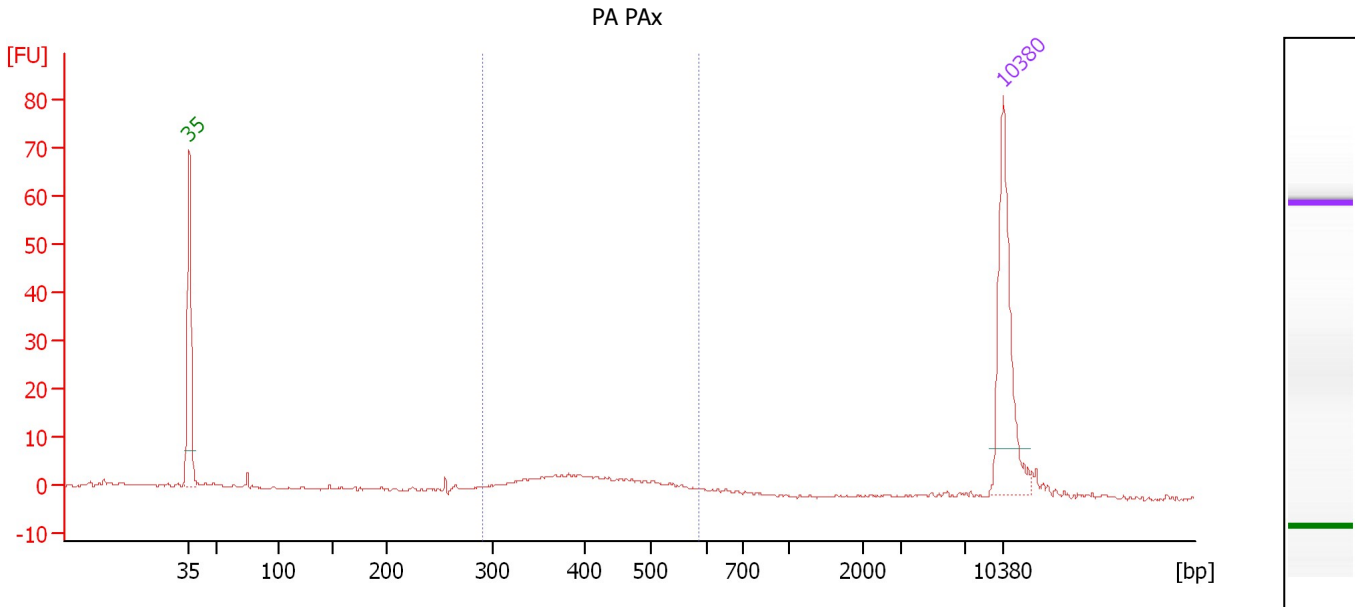
Region table for sample 2 : PA PB

| From [bp] | To [bp] | Average Size [bp] | Molarity [pmol/l] | Conc. [pg/μl] | Corr. Area | % of Total | Size distribution in CV [%] | Color |
|-----------|---------|-------------------|-------------------|---------------|------------|------------|-----------------------------|-------|
| 291 | 1,114 | 519 | 954.8 | 294.01 | 264.9 | 86 | 30.1 | Blue |

Assay Class: High Sensitivity DNA Assay
 Data Path: C:\...s and Settings\Bioanalyzer\2012-08-28\2012-08-28_005_LF.xad

Created: 8/28/2012 2:30:07 PM
 Modified: 8/28/2012 3:12:13 PM

Electropherogram Summary Continued ...



Overall Results for sample 3 : PA PAX

Number of peaks found: 0 Corr. Area 1: 60.1
 Noise: 0.2

Peak table for sample 3 : PA PAX

| Peak | Size [bp] | Conc. [pg/μl] | Molarity [pmol/l] | Observations |
|------|-----------|---------------|-------------------|--------------|
| 1 | 35 | 125.00 | 5,411.3 | Lower Marker |
| 2 | 10,380 | 75.00 | 10.9 | Upper Marker |

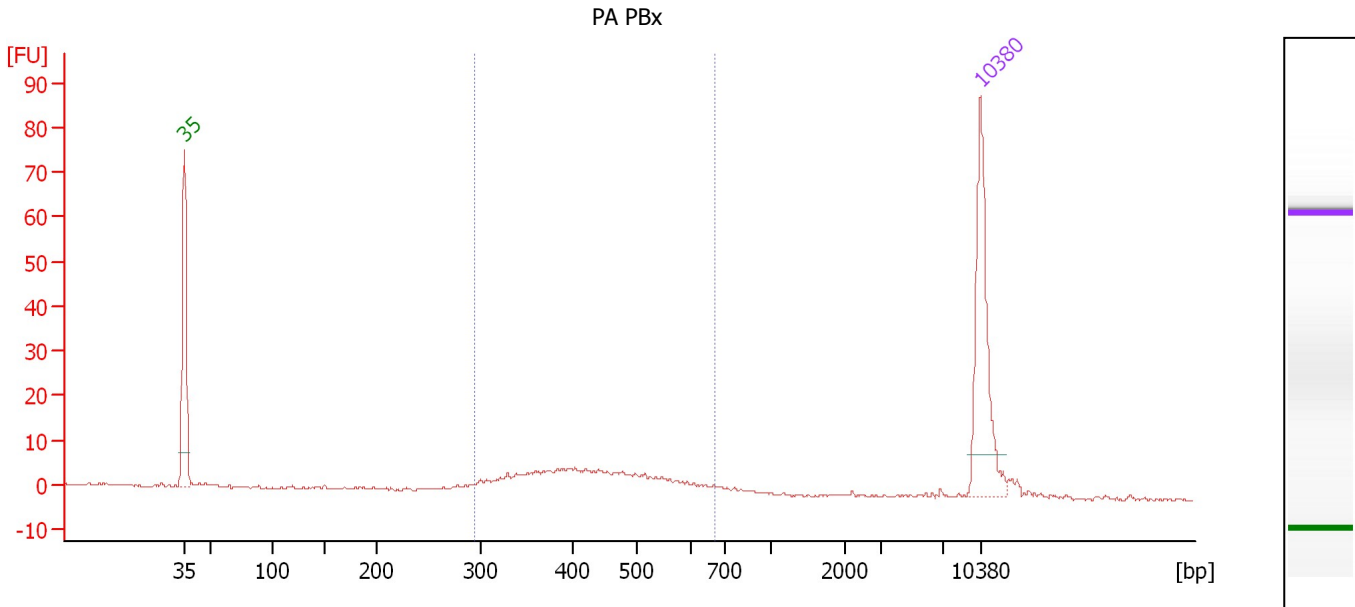
Region table for sample 3 : PA PAX

| From [bp] | To [bp] | Average Size [bp] | Molarity [pmol/l] | Conc. [pg/μl] | Corr. Area | % of Total | Size distribution in CV [%] | Color |
|-----------|---------|-------------------|-------------------|---------------|------------|------------|-----------------------------|-------|
| 291 | 587 | 416 | 278.6 | 73.57 | 60.1 | 59 | 17.3 | Blue |

Assay Class: High Sensitivity DNA Assay
 Data Path: C:\...s and Settings\Bioanalyzer\2012-08-28\2012-08-28_005_LF.xad

Created: 8/28/2012 2:30:07 PM
 Modified: 8/28/2012 3:12:13 PM

Electropherogram Summary Continued ...



Overall Results for sample 4 : PA PBx

Number of peaks found: 0 Corr. Area 1: 97.0
 Noise: 0.2

Peak table for sample 4 : PA PBx

| Peak | Size [bp] | Conc. [pg/μl] | Molarity [pmol/l] | Observations |
|------|-----------|---------------|-------------------|--------------|
| 1 | 35 | 125.00 | 5,411.3 | Lower Marker |
| 2 | 10,380 | 75.00 | 10.9 | Upper Marker |

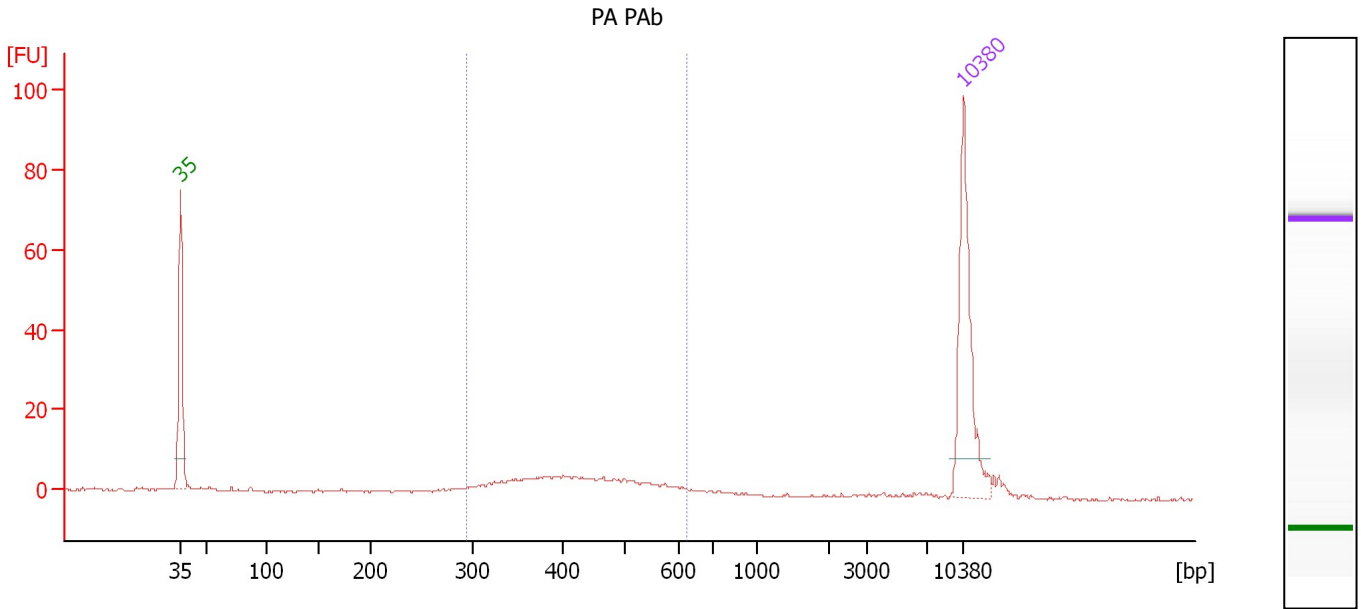
Region table for sample 4 : PA PBx

| From [bp] | To [bp] | Average Size [bp] | Molarity [pmol/l] | Conc. [pg/μl] | Corr. Area | % of Total | Size distribution in CV [%] | Color |
|-----------|---------|-------------------|-------------------|---------------|------------|------------|-----------------------------|-------|
| 295 | 669 | 439 | 412.9 | 113.39 | 97.0 | 79 | 20.2 | Blue |

Assay Class: High Sensitivity DNA Assay
 Data Path: C:\...s and Settings\Bioanalyzer\2012-08-28\2012-08-28_005_LF.xad

Created: 8/28/2012 2:30:07 PM
 Modified: 8/28/2012 3:12:13 PM

Electropherogram Summary Continued ...



Overall Results for sample 5 : PA PAb

Number of peaks found: 0 Corr. Area 1: 81.0
 Noise: 0.2

Peak table for sample 5 : PA PAb

| Peak | Size [bp] | Conc. [pg/μl] | Molarity [pmol/l] | Observations |
|------|-----------|---------------|-------------------|--------------|
| 1 | 35 | 125.00 | 5,411.3 | Lower Marker |
| 2 | 10,380 | 75.00 | 10.9 | Upper Marker |

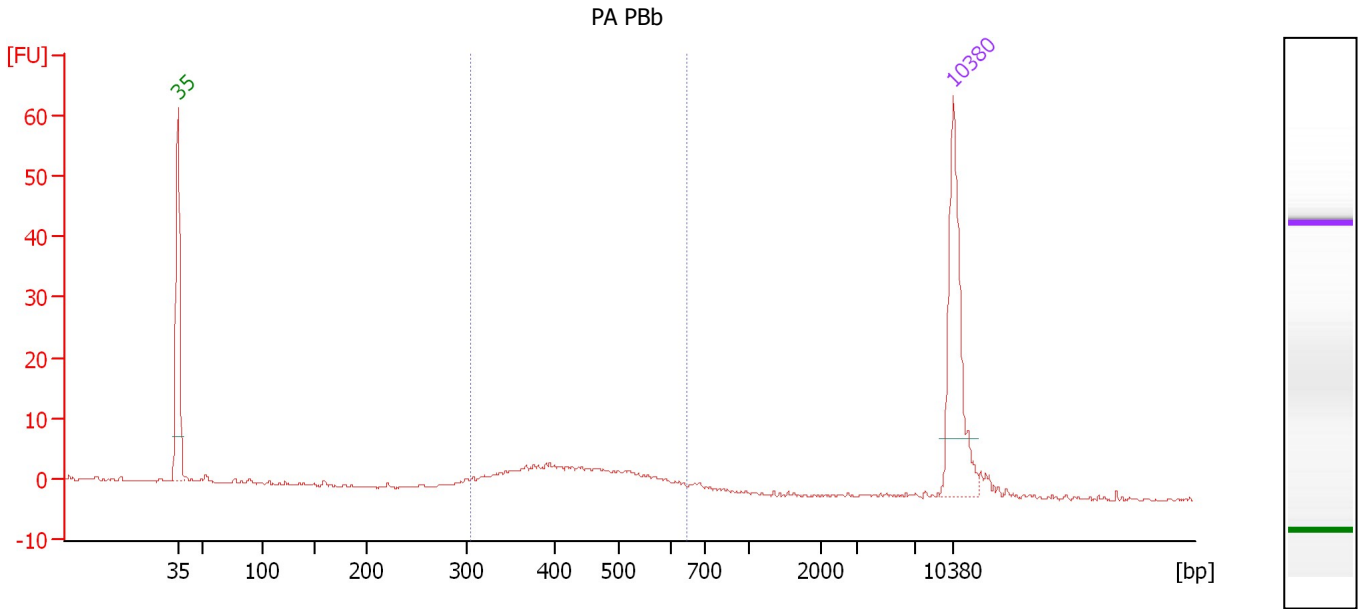
Region table for sample 5 : PA PAb

| From [bp] | To [bp] | Average Size [bp] | Molarity [pmol/l] | Conc. [pg/μl] | Corr. Area | % of Total | Size distribution in CV [%] | Color |
|-----------|---------|-------------------|-------------------|---------------|------------|------------|-----------------------------|-------|
| 296 | 628 | 431 | 315.3 | 85.68 | 81.0 | 69 | 18.9 | Blue |

Assay Class: High Sensitivity DNA Assay
 Data Path: C:\...s and Settings\Bioanalyzer\2012-08-28\2012-08-28_005_LF.xad

Created: 8/28/2012 2:30:07 PM
 Modified: 8/28/2012 3:12:13 PM

Electropherogram Summary Continued ...



Overall Results for sample 6 : PA PBb

Number of peaks found: 0 Corr. Area 1: 68.3
 Noise: 0.2

Peak table for sample 6 : PA PBb

| Peak | Size [bp] | Conc. [pg/μl] | Molarity [pmol/l] | Observations |
|------|-----------|---------------|-------------------|--------------|
| 1 | 35 | 125.00 | 5,411.3 | Lower Marker |
| 2 | 10,380 | 75.00 | 10.9 | Upper Marker |

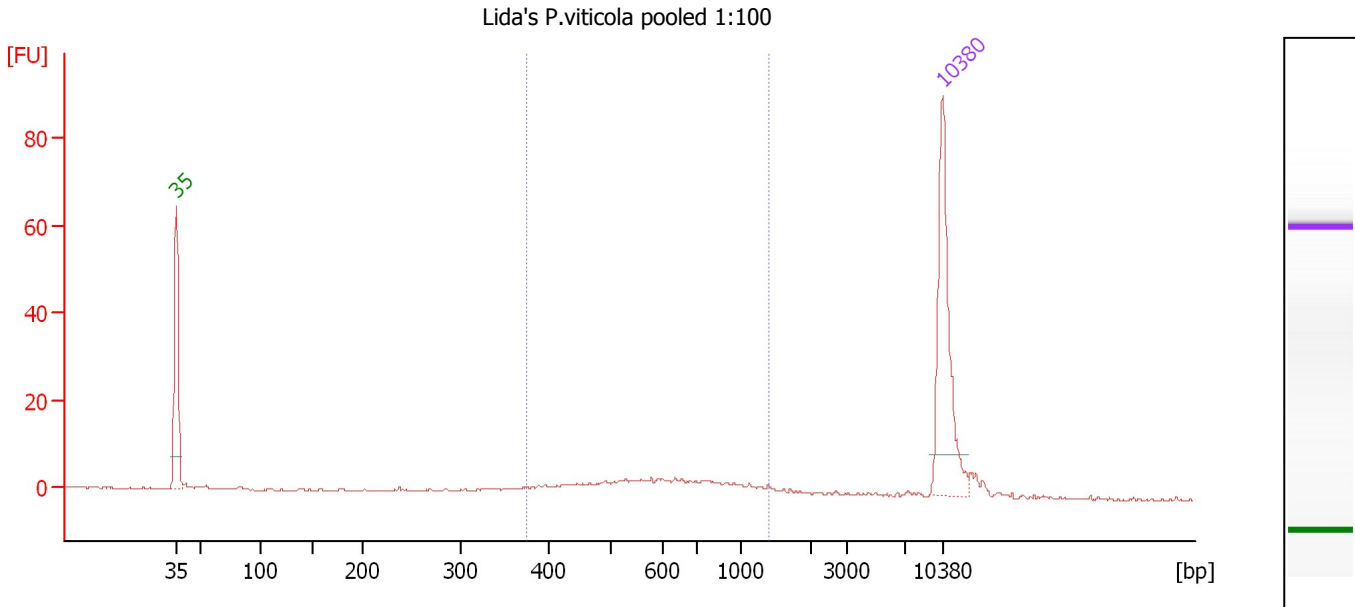
Region table for sample 6 : PA PBb

| From [bp] | To [bp] | Average Size [bp] | Molarity [pmol/l] | Conc. [pg/μl] | Corr. Area | % of Total | Size distribution in CV [%] | Color |
|-----------|---------|-------------------|-------------------|---------------|------------|------------|-----------------------------|-------|
| 306 | 650 | 441 | 360.8 | 100.42 | 68.3 | 80 | 18.7 | Blue |

Assay Class: High Sensitivity DNA Assay
 Data Path: C:\...s and Settings\Bioanalyzer\2012-08-28\2012-08-28_005_LF.xad

Created: 8/28/2012 2:30:07 PM
 Modified: 8/28/2012 3:12:13 PM

Electropherogram Summary Continued ...



Overall Results for sample 7 : Lida's P.viticola pooled 1:100

Number of peaks found: 0 Corr. Area 1: 64.0
 Noise: 0.2

Peak table for sample 7 : Lida's P.viticola pooled 1:100

| Peak | Size [bp] | Conc. [pg/μl] | Molarity [pmol/l] | Observations |
|------|-----------|---------------|-------------------|--------------|
| 1 | 35 | 125.00 | 5,411.3 | Lower Marker |
| 2 | 10,380 | 75.00 | 10.9 | Upper Marker |

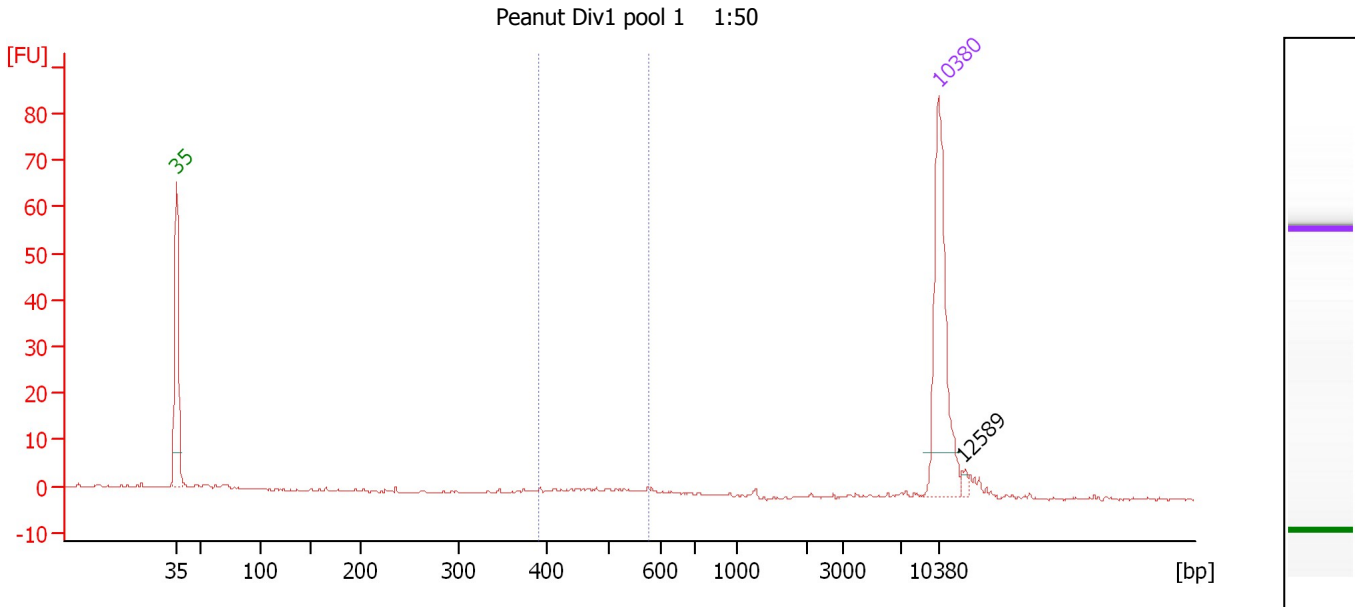
Region table for sample 7 : Lida's P.viticola pooled 1:100

| From [bp] | To [bp] | Average Size [bp] | Molarity [pmol/l] | Conc. [pg/μl] | Corr. Area | % of Total | Size distribution in CV [%] | Color |
|-----------|---------|-------------------|-------------------|---------------|------------|------------|-----------------------------|-------|
| 375 | 1,405 | 659 | 172.3 | 65.90 | 64.0 | 66 | 34.9 | Blue |

Assay Class: High Sensitivity DNA Assay
 Data Path: C:\...s and Settings\Bioanalyzer\2012-08-28\2012-08-28_005_LF.xad

Created: 8/28/2012 2:30:07 PM
 Modified: 8/28/2012 3:12:13 PM

Electropherogram Summary Continued ...



Overall Results for sample 8 : Peanut Div1 pool 1 1:50

Number of peaks found: 1 Corr. Area 1: 6.1
 Noise: 0.2

Peak table for sample 8 : Peanut Div1 pool 1 1:50

| Peak | Size [bp] | Conc. [pg/μl] | Molarity [pmol/l] | Observations |
|------|-----------|---------------|-------------------|--------------|
| 1 | 35 | 125.00 | 5,411.3 | Lower Marker |
| 2 | 10,380 | 75.00 | 10.9 | Upper Marker |
| 3 | 12,589 | 0.00 | 0.0 | |

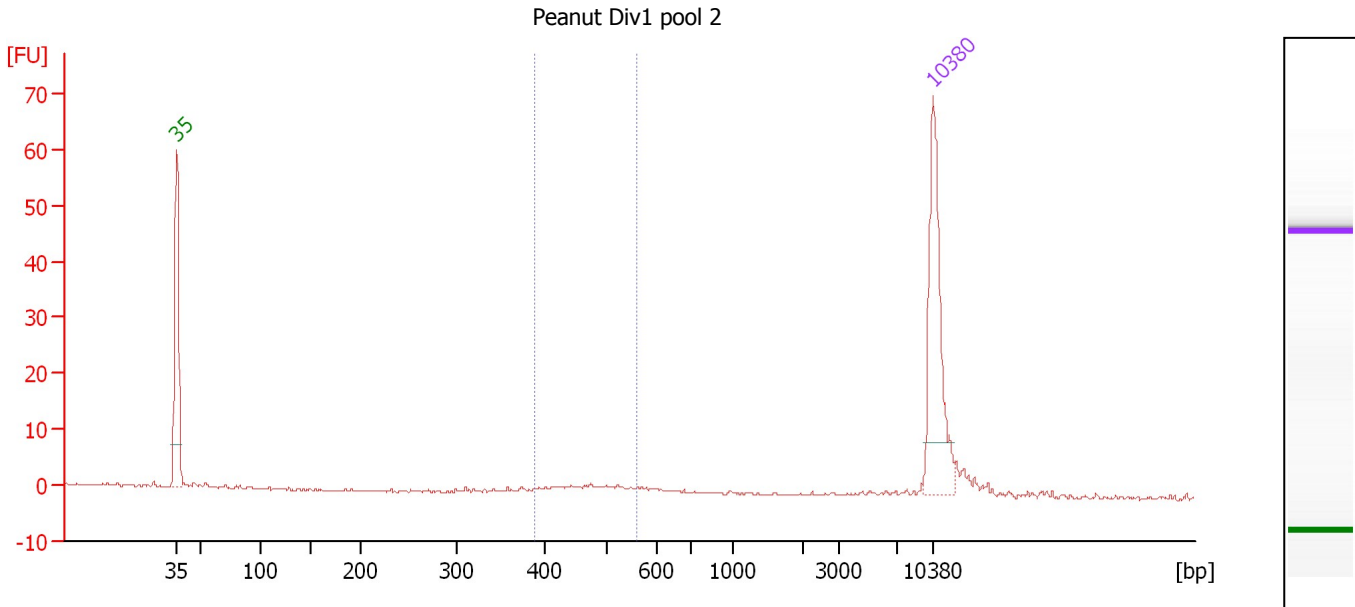
Region table for sample 8 : Peanut Div1 pool 1 1:50

| From [bp] | To [bp] | Average Size [bp] | Molarity [pmol/l] | Conc. [pg/μl] | Corr. Area | % of Total | Size distribution in CV [%] | Color |
|-----------|---------|-------------------|-------------------|---------------|------------|------------|-----------------------------|-------|
| 390 | 578 | 486 | 21.0 | 6.65 | 6.1 | 25 | 10.9 | Blue |

Assay Class: High Sensitivity DNA Assay
 Data Path: C:\...s and Settings\Bioanalyzer\2012-08-28\2012-08-28_005_LF.xad

Created: 8/28/2012 2:30:07 PM
 Modified: 8/28/2012 3:12:13 PM

Electropherogram Summary Continued ...



Overall Results for sample 9 : Peanut Div1 pool 2

Number of peaks found: 0 Corr. Area 1: 3.5
 Noise: 0.2

Peak table for sample 9 : Peanut Div1 pool 2

| Peak | Size [bp] | Conc. [pg/μl] | Molarity [pmol/l] | Observations |
|------|-----------|---------------|-------------------|--------------|
| 1 | 35 | 125.00 | 5,411.3 | Lower Marker |
| 2 | 10,380 | 75.00 | 10.9 | Upper Marker |

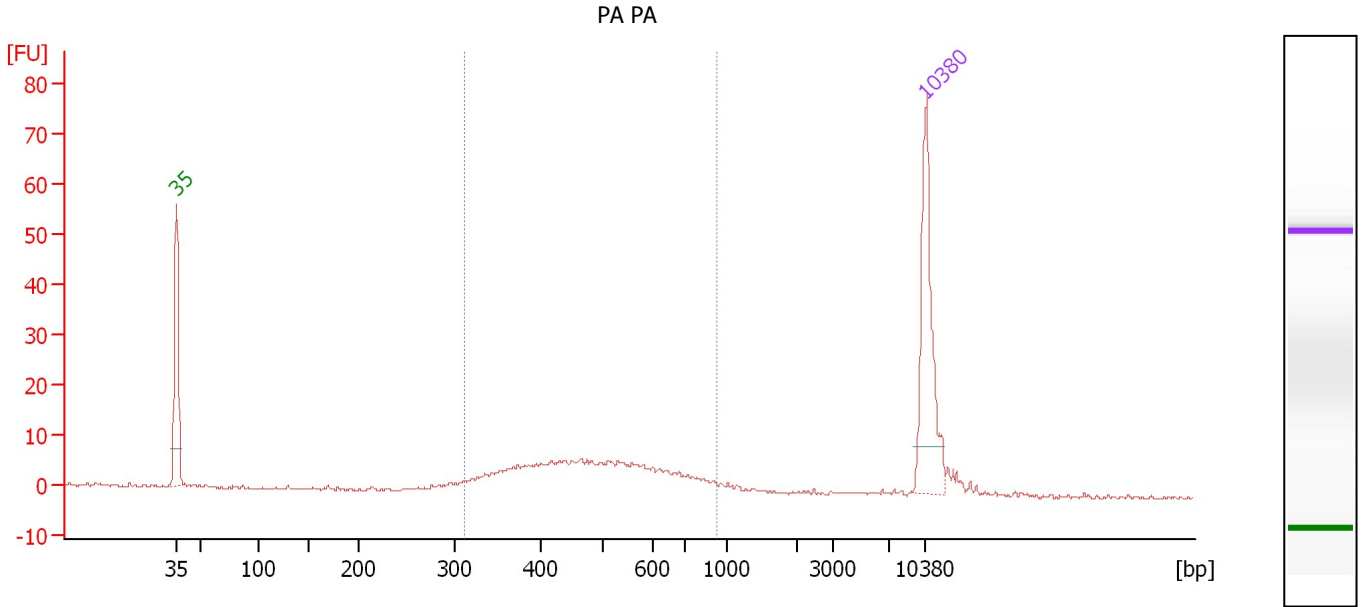
Region table for sample 9 : Peanut Div1 pool 2

| From [bp] | To [bp] | Average Size [bp] | Molarity [pmol/l] | Conc. [pg/μl] | Corr. Area | % of Total | Size distribution in CV [%] | Color |
|-----------|---------|-------------------|-------------------|---------------|------------|------------|-----------------------------|-------|
| 389 | 562 | 480 | 14.8 | 4.66 | 3.5 | 26 | 8.3 | Blue |

Assay Class: High Sensitivity DNA Assay
 Data Path: C:\...s and Settings\Bioanalyzer\2012-08-28\2012-08-28_005_LF.xad

Created: 8/28/2012 2:30:07 PM
 Modified: 8/28/2012 3:12:13 PM

Electropherogram Summary Continued ...



Overall Results for sample 10 : PA PA

Number of peaks found: 0 Corr. Area 1: 123.4
 Noise: 0.2

Peak table for sample 10 : PA PA

| Peak | Size [bp] | Conc. [pg/μl] | Molarity [pmol/l] | Observations |
|------|-----------|---------------|-------------------|--------------|
| 1 | 35 | 125.00 | 5,411.3 | Lower Marker |
| 2 | 10,380 | 75.00 | 10.9 | Upper Marker |

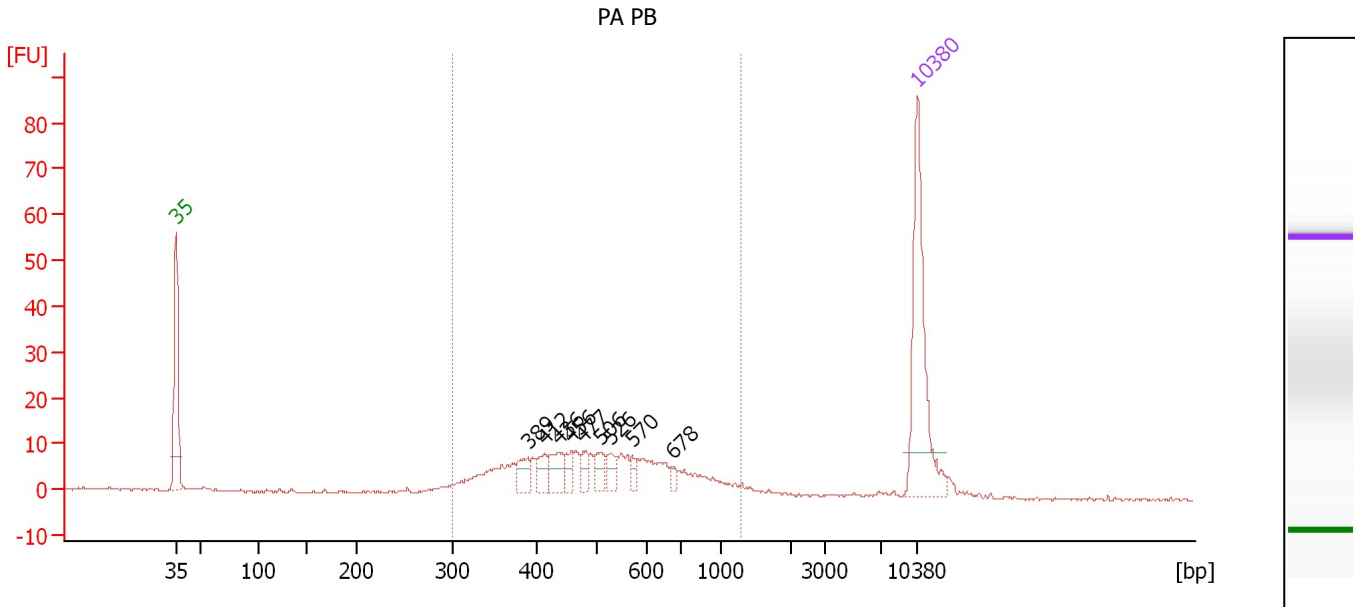
Region table for sample 10 : PA PA

| From [bp] | To [bp] | Average Size [bp] | Molarity [pmol/l] | Conc. [pg/μl] | Corr. Area | % of Total | Size distribution in CV [%] | Color |
|-----------|---------|-------------------|-------------------|---------------|------------|------------|-----------------------------|-------|
| 312 | 922 | 500 | 527.9 | 161.03 | 123.4 | 87 | 25.3 | Blue |

Assay Class: High Sensitivity DNA Assay
 Data Path: C:\...s and Settings\Bioanalyzer\2012-08-28\2012-08-28_005_LF.xad

Created: 8/28/2012 2:30:07 PM
 Modified: 8/28/2012 3:12:13 PM

Electropherogram Summary Continued ...



Overall Results for sample 11 : PA PB

Number of peaks found: 9 Corr. Area 1: 209.5
 Noise: 0.2

Peak table for sample 11 : PA PB

| Peak | Size [bp] | Conc. [pg/μl] | Molarity [pmol/l] | Observations |
|------|-----------|---------------|-------------------|--------------|
| 1 | 35 | 125.00 | 5,411.3 | Lower Marker |
| 2 | 389 | 13.72 | 53.5 | |
| 3 | 412 | 12.51 | 46.0 | |
| 4 | 436 | 17.22 | 59.9 | |
| 5 | 456 | 10.23 | 34.0 | |
| 6 | 477 | 8.28 | 26.3 | |
| 7 | 506 | 11.29 | 33.8 | |
| 8 | 526 | 10.63 | 30.6 | |
| 9 | 570 | 5.86 | 15.6 | |
| 10 | 678 | 4.03 | 9.0 | |
| 11 | 10,380 | 75.00 | 10.9 | Upper Marker |

Region table for sample 11 : PA PB

| From [bp] | To [bp] | Average Size [bp] | Molarity [pmol/l] | Conc. [pg/μl] | Corr. Area | % of Total | Size distribution in CV [%] | Color |
|-----------|---------|-------------------|-------------------|---------------|------------|------------|-----------------------------|-------|
| 302 | 1,264 | 529 | 745.2 | 232.41 | 209.5 | 87 | 32.7 | Blue |

Assay Class: High Sensitivity DNA Assay
Data Path: C:\...s and Settings\Bioanalyzer\2012-08-28\2012-08-28_005_LF.xad

Created: 8/28/2012 2:30:07 PM
Modified: 8/28/2012 3:12:13 PM

Gel Image

